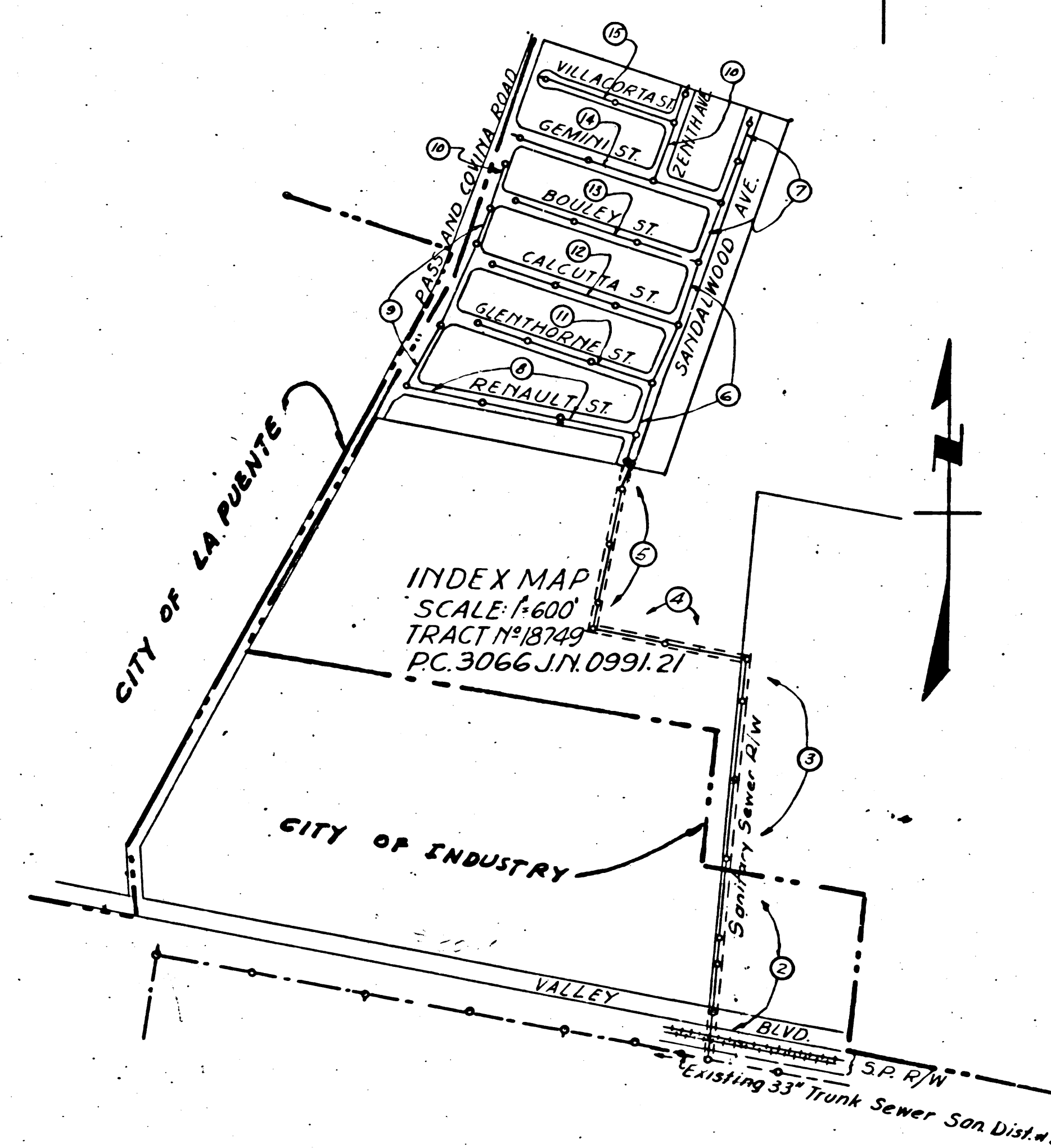


Trim Line

BENCH MARK: L. Q. 859-11 #15
C.S. In W. End Conc. H.W. No. 110
S.P.R.R. W. Side Anaheim Puente
Road ELEV. 374.865'

PUENTE Bldg. Dist. No. 2

- NOTE:
1. Provide stakes on the property lines or property lines produced at right angles to the sewer line at the center line of each manhole.
 2. No representative of the County Engineer will survey or layout any portion of the work. The owner or his authorized representative shall furnish the County Engineer with grade sheets and stations for all house laterals and Y branches and shall provide stakes for them at their proper locations with stationing plainly marked. Any change in location shall be requested in writing by the owner or his representative.
 3. No revisions shall be made in these plans without the approval of the County Engineer.
 4. Use standard manhole frames and covers, S-a-117, except as noted.
 5. Use cement mortar for all vitrified clay pipe joints, except as noted.
 6. Resurface all trench within paved area to meet L.A. County Road Dept. or Calif. State Highway Dept. requirements in accordance with permit.
 7. Encase four feet of sewer at points of interference with poles, S-a-119.
 8. House laterals to be constructed with inverts at property line 6 feet below curb grade except as noted.
 9. All structures shall be brick sewer structures, S-a-104, except as noted.
 10. For allowable leakage test, use Formula No. 1, Spec's., Sec. 51, except as noted.
 11. Manhole tops in unimproved Rights-of-Way to be 6" above finish grade.



SHEET NO	PAGES
1	1-5
2	6-10
3	11-15

Before breaking into any existing structure and before final acceptance of this work, County Sanitation District should be notified in order that required inspection can be made.

Revision-Cutfall Sewer Relocated
Approved *P. R. Collins* 2-9-55
Office of County Engineer
Reg. C.E. 7860

COLLECT CHARGES AS INDICATED
L. Curtis 7-14-54

Page 5 - Two manholes added to conform to East Sewer & New Right-of-Way *P. R. Collins* 7-21-55

Revised 5-17-55 McFarren

Trim Line

PROFILE, ALIGNMENT AND GRADE OF
SANITARY SEWERS
TO BE CONSTRUCTED IN
RIGHT OF WAY AND
TRACT N° 18749

P. C. 3066
J. N. F. 0991.21
PAGE 1

PRIVATE CONTRACT NO. 3066
W. S. 38
SHEET ONE OF THREE SHEETS
Scale: VERT. 1"=4' HORIZ. 1"=40' JULY 1954
PREPARED IN THE OFFICES OF
KARL TUTTLE ENGINEERING CO.
John A. Alford Reg. C.E. No. 8638
FOR LEGEND SEE PLAN NO. S-a-64

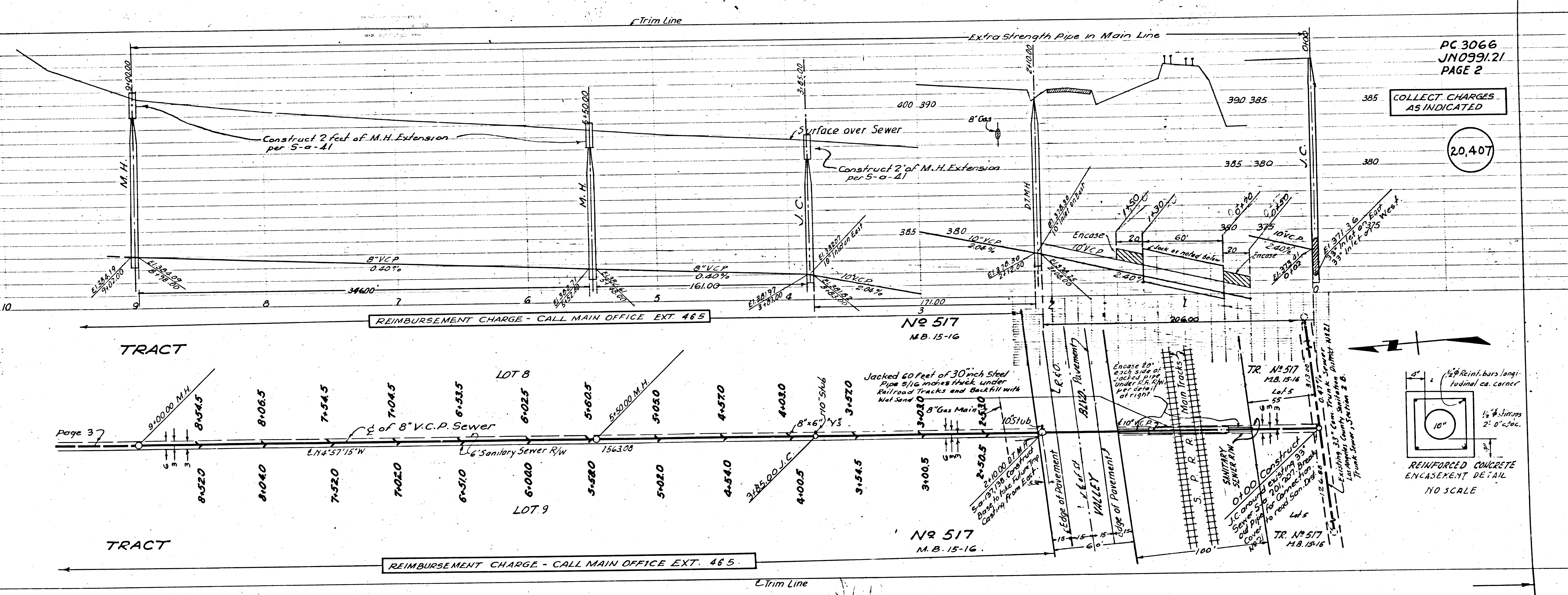
20,406

NOTE:
Grades to which this improvement is to be constructed are shown on plans and profiles. Grade points for top of curbs, center line of streets, or center line of alleys are shown by circles on profiles. At all points between designated points the grade shall be established so as to conform to a straight line drawn between said designated points. Elevations are in feet above U.S.G.S. datum or mean sea level. This drawing and the data hereon are hereby made a part of the specifications. Work shall be constructed according to specifications on file in the office of the County Engineer and shall be prosecuted only in the presence of the County Engineer. Before work can be started, the contractor must obtain a permit to excavate in County streets from the L.A. County Road Dept., 108 W. 2nd St., and make a deposit with the County Engineer, 733 L.A. County Engineering Building, sufficient to cover the cost of construction inspection and record plans. Approval of this plan by the County of Los Angeles does not constitute a representation as to the accuracy of the location of or the existence or non-existence of any underground utility, pipe, or structure within the limits of this project. This note applies to all sheets. If work is to be done in a State Highway, a permit must be obtained from the State of California, Division of Highways, 120 South Spring Street.

COUNTY OF LOS ANGELES, CALIFORNIA
Approved, William J. Fox, County Engineer
Approved, A. M. Rawn
CHIEF ENGR. CO. SAN. DIST. NO. 21
Checked By *P. R. Collins* 7-15-54
Office of County Engineer, Reg. C. E. No. 7860

(15)

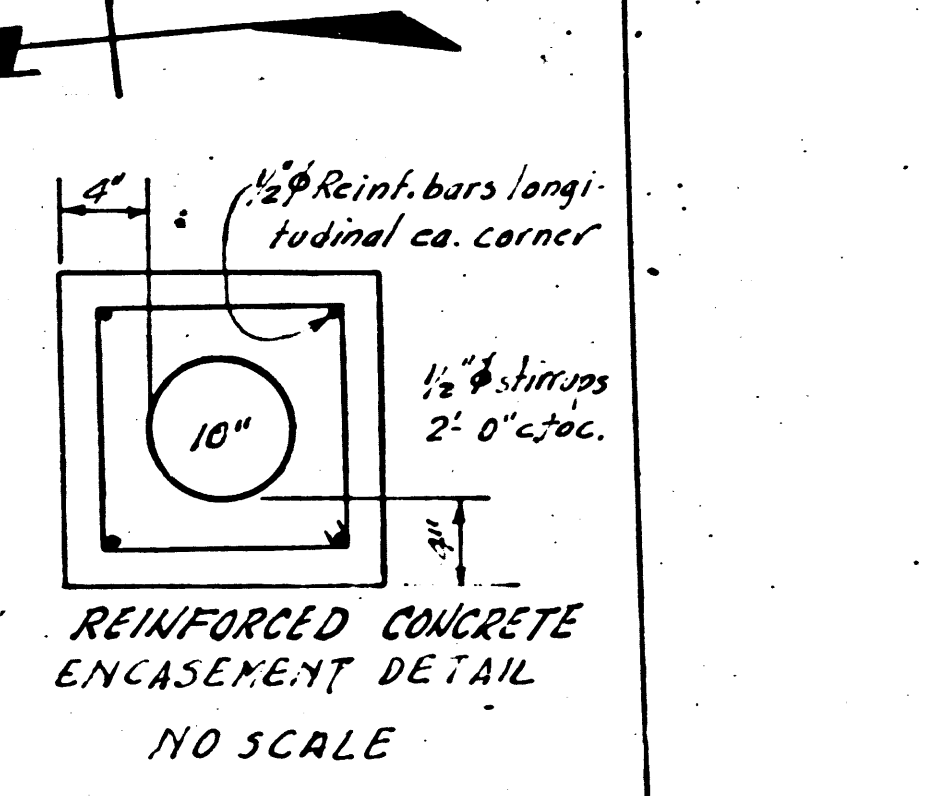
RB



PC 3066
JN0991.21
PAGE 2

COLLECT CHARGES
AS INDICATED

20,407



Page 37

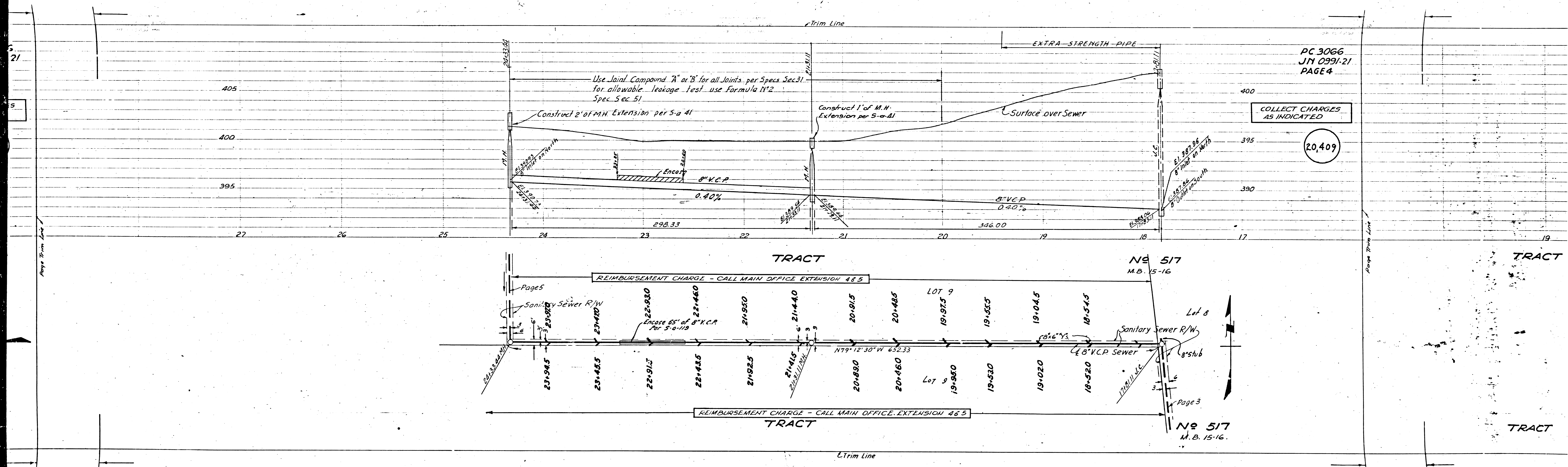
REIMBURSEMENT CHARGE - CALL MAIN OFFICE EXT. 465

NR 517
M.B. 15-16

NR 517
M.B. 15-16

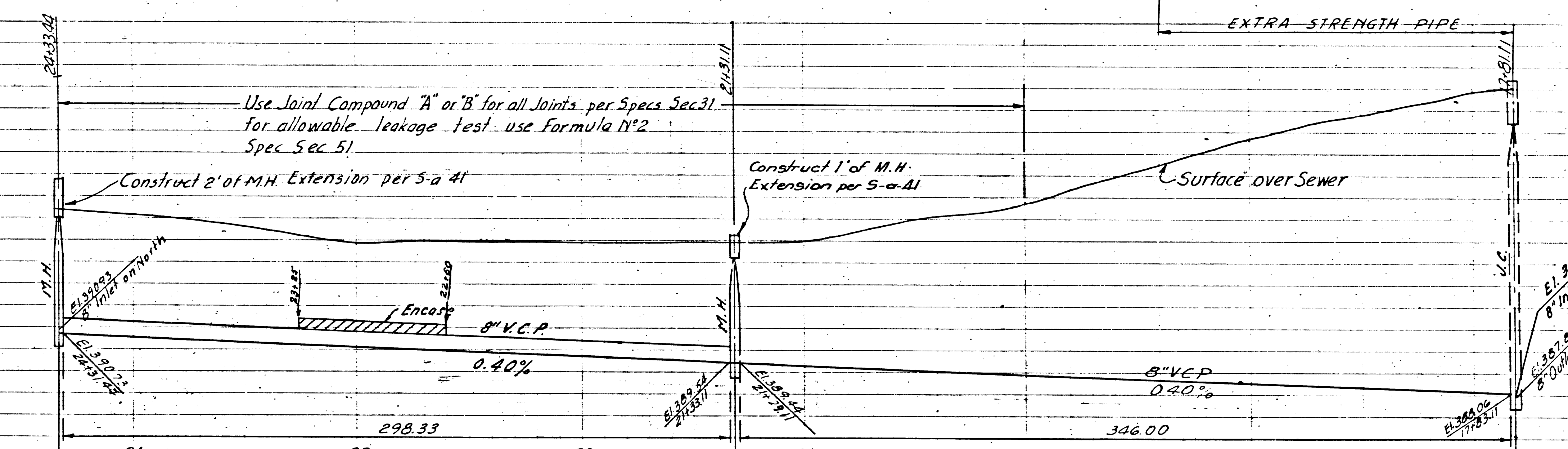
REIMBURSEMENT CHARGE - CALL MAIN OFFICE EXT. 465

Trim Line



405
400
395

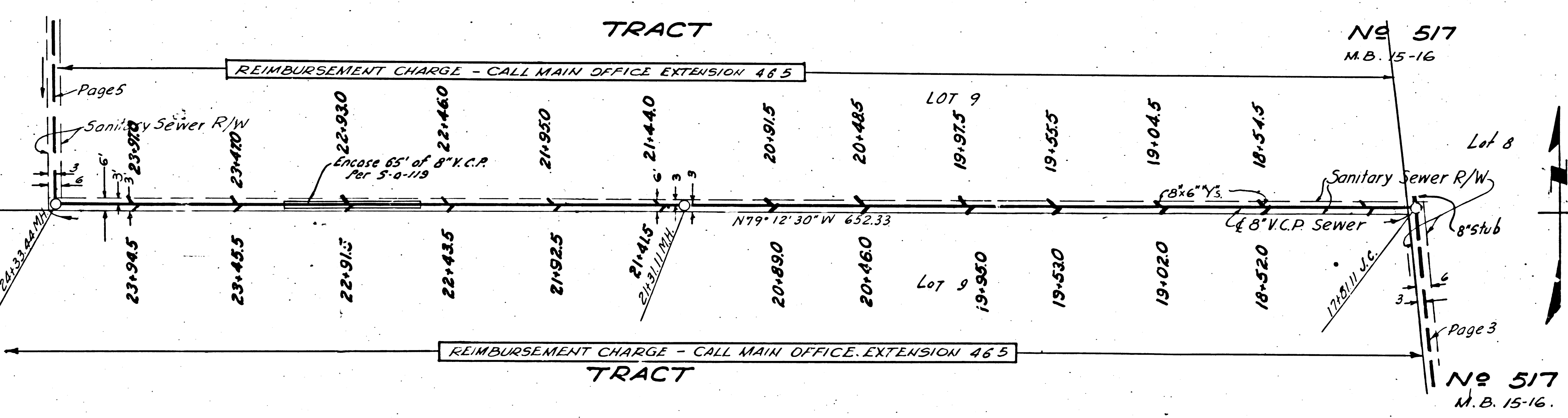
27 26 25 24 23 22 21 20 19 18 17



PC 3066
JN 0991-21
PAGE 4

COLLECT CHARGES
AS INDICATED

20,409



NE 517
M.B. 15-16

NE 517
M.B. 15-16

TRACT

TRACT

TRACT

TRACT

Page Trim Line

Page Trim Line

21

9

5

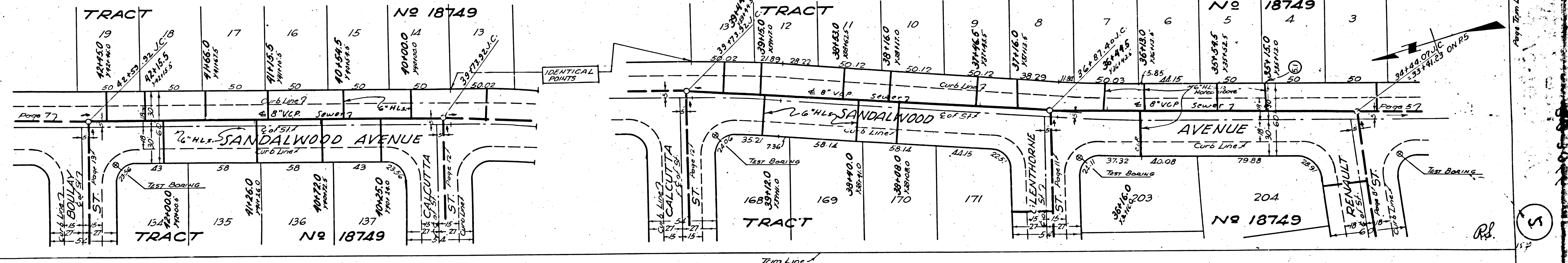
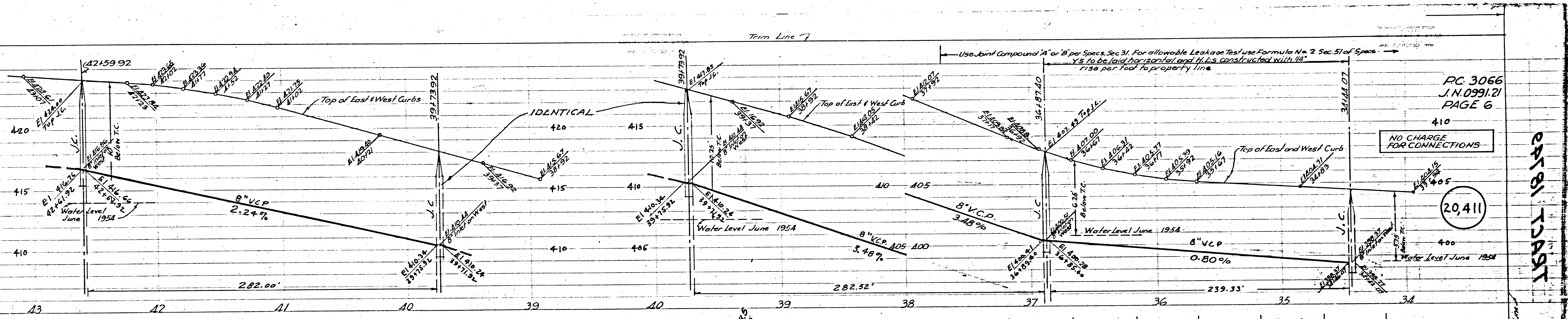
5

PC 3066
J.N. 0991.21
PAGE 7

20,412

NO CHARGE FOR CONNECTIONS

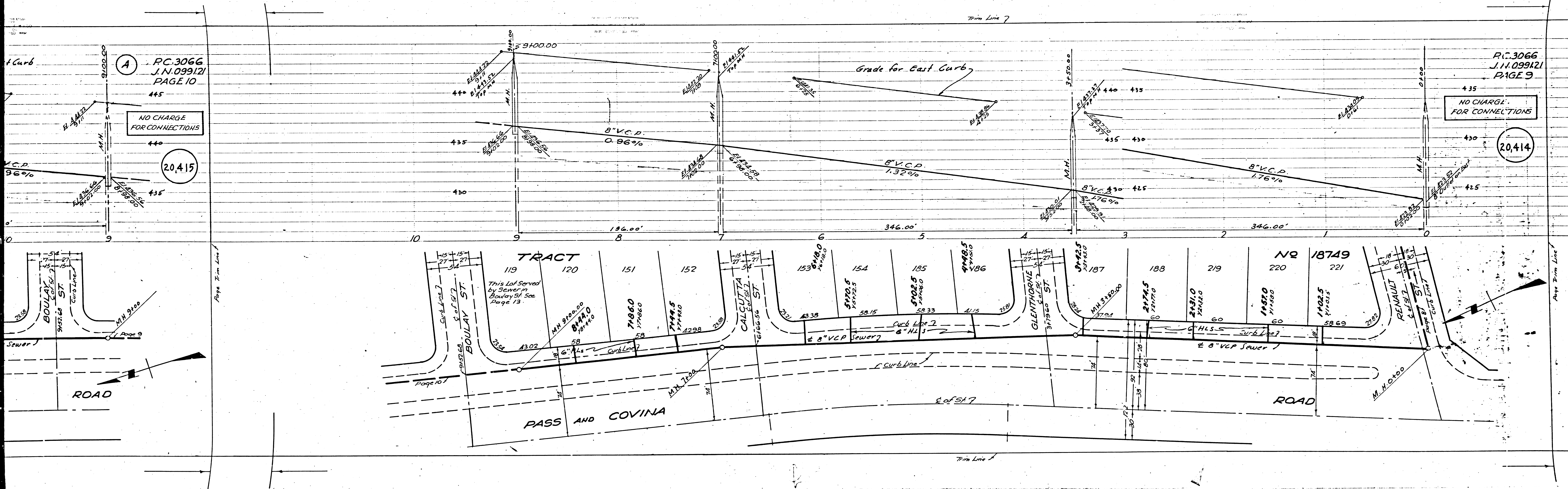
NO CHARGE FOR CONNECTIONS



PC 3066
J.N. 0991.21
PAGE 6
410

20,411

5



A
 PC.3066
 J.N.099121
 PAGE 10
 445
 NO CHARGE
 FOR CONNECTIONS
 440
 20,415
 435

PC.3066
 J.N.099121
 PAGE 9
 435
 NO CHARGE
 FOR CONNECTIONS
 430
 20,414
 425

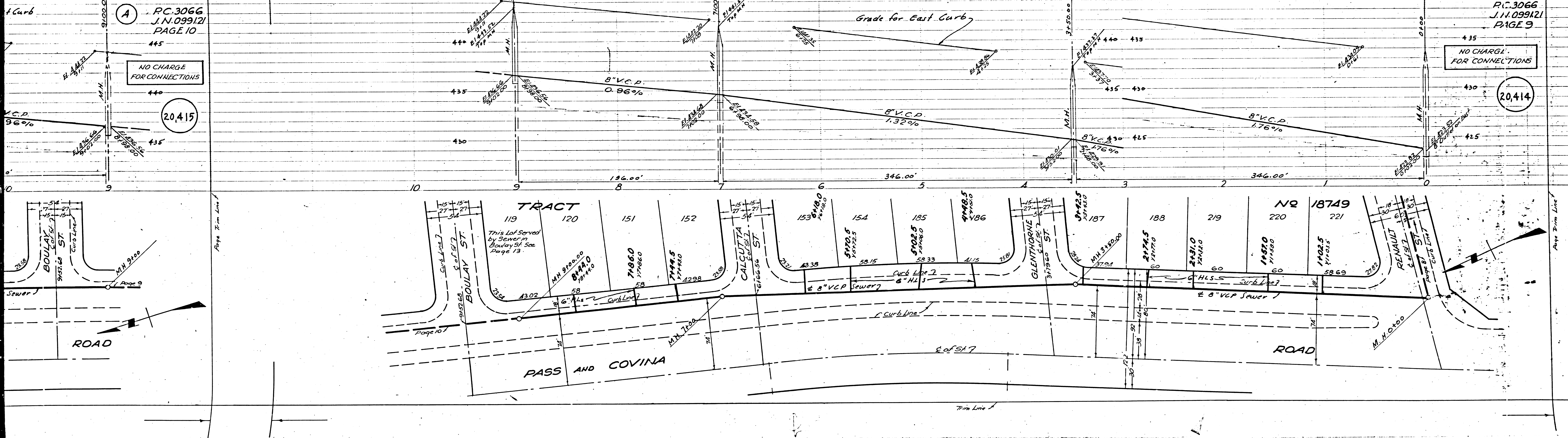
TRACT

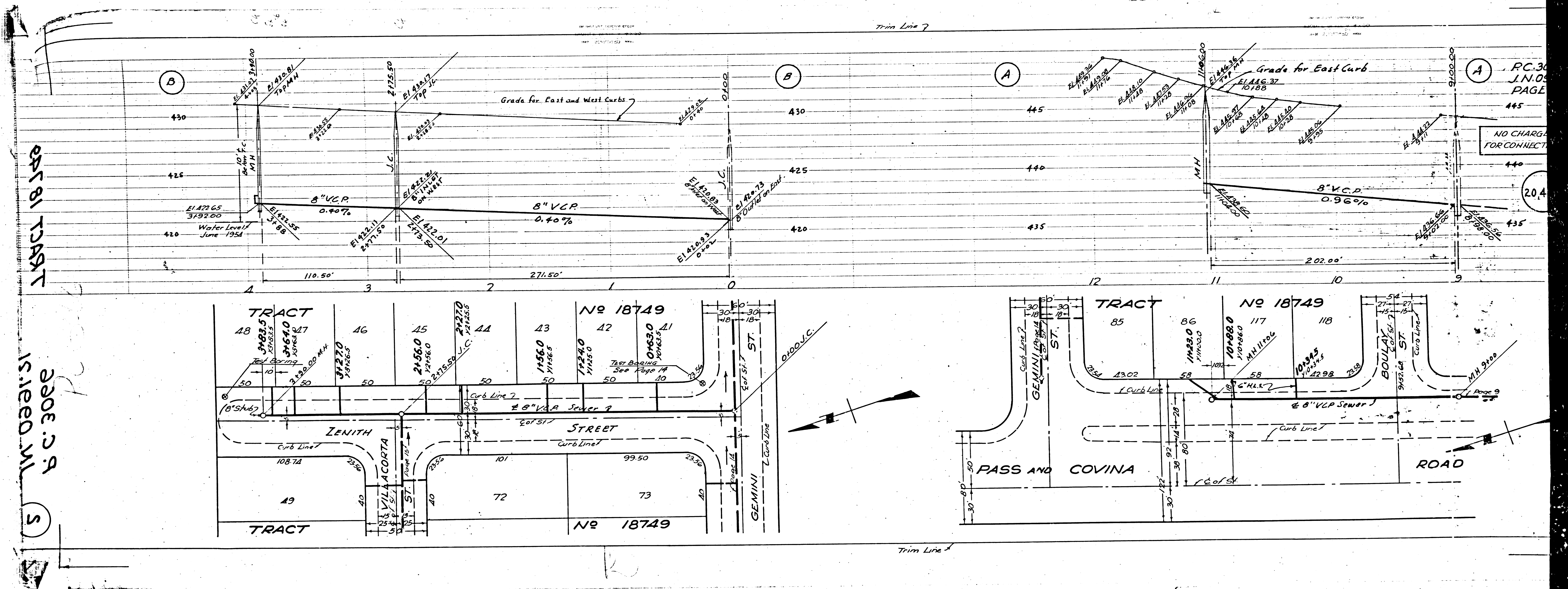
NO 18749

This Lot Served
 by Sewer in
 Boulay St. See
 Page 13

PASS AND COVINA

ROAD





055 81 TRACT
 2300 29
 15.1000 ML
 5

RC.30
 J.N.D.
 PAGE
 445
 NO CHARGE
 FOR CONNECT
 20.4



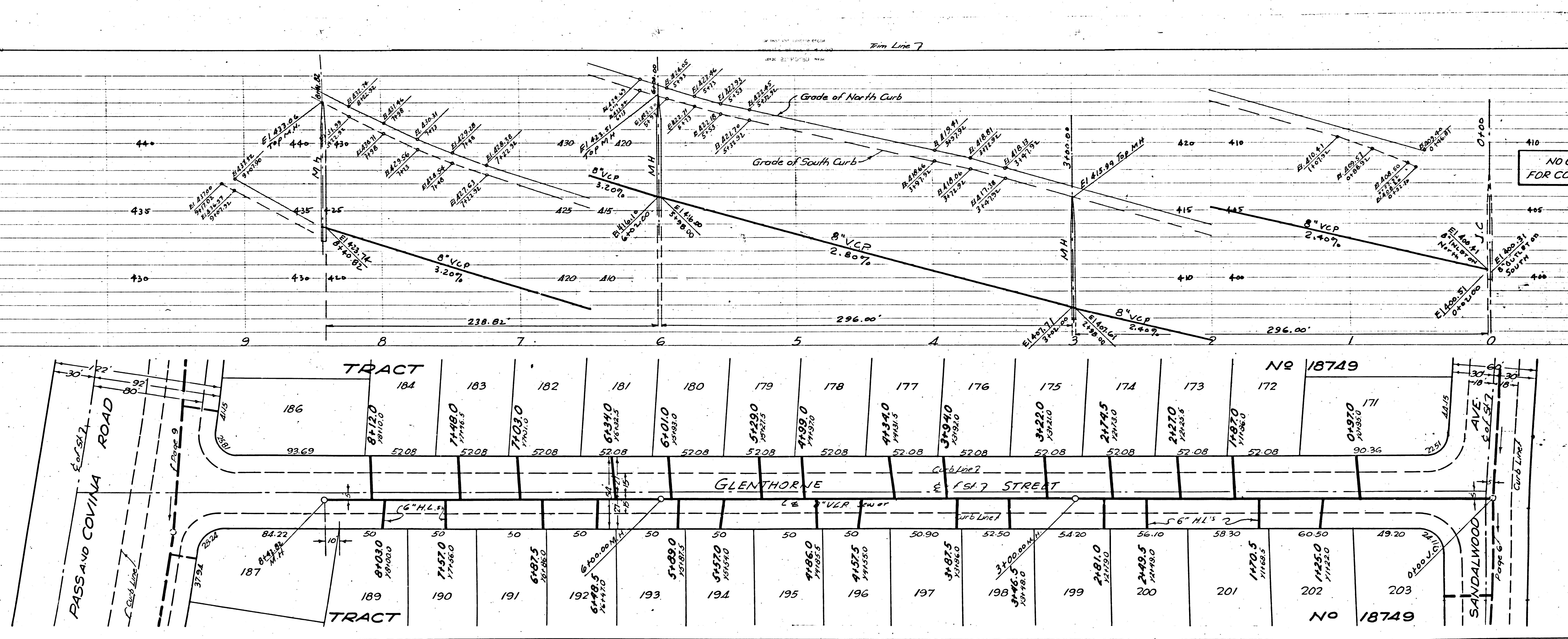
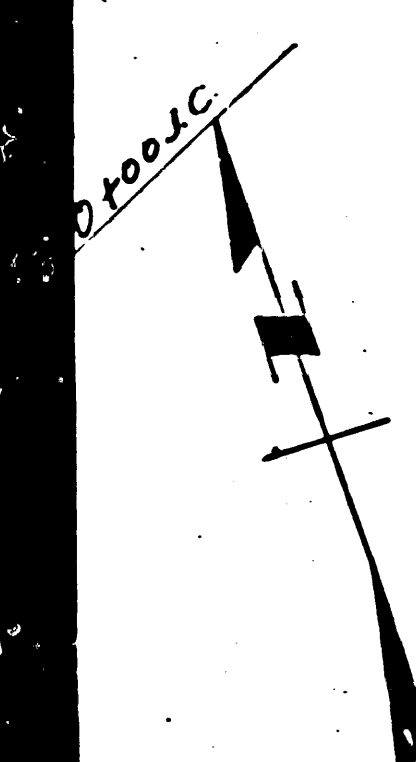
Trim Line 7

Trim Line 8

PC.3066
J.N.099121
PAGE 12

NO CHARGE
FOR CONNECTIONS

20,417



PC.3066
J.N.099121
PAGE 11

NO CHARGE
FOR CONNECTIONS

20,416

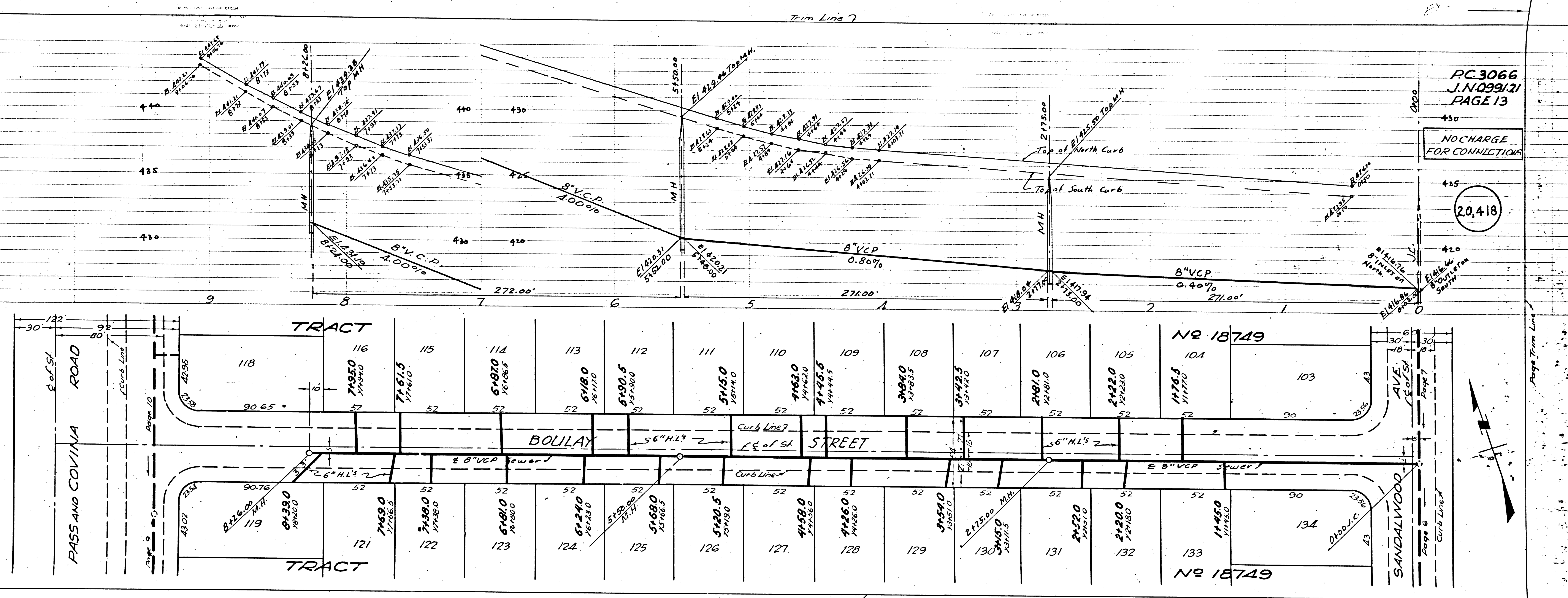


Rel

RC 3066
J.N. 099/21
PAGE 1A

NO CHARGE
FOR CONNECTIONS

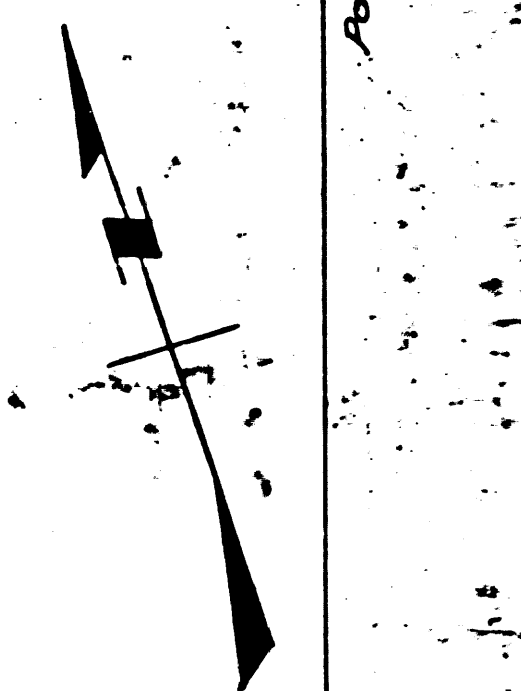
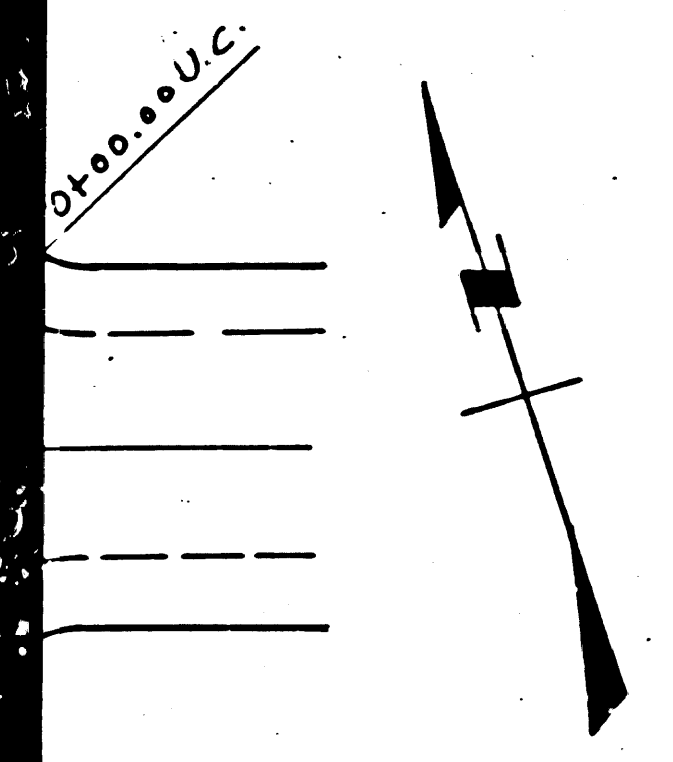
20,419



RC 3066
J.N. 099/21
PAGE 1B

NO CHARGE
FOR CONNECTIONS

20,418



PC 3066
J.N. 0991.21
PAGE 15

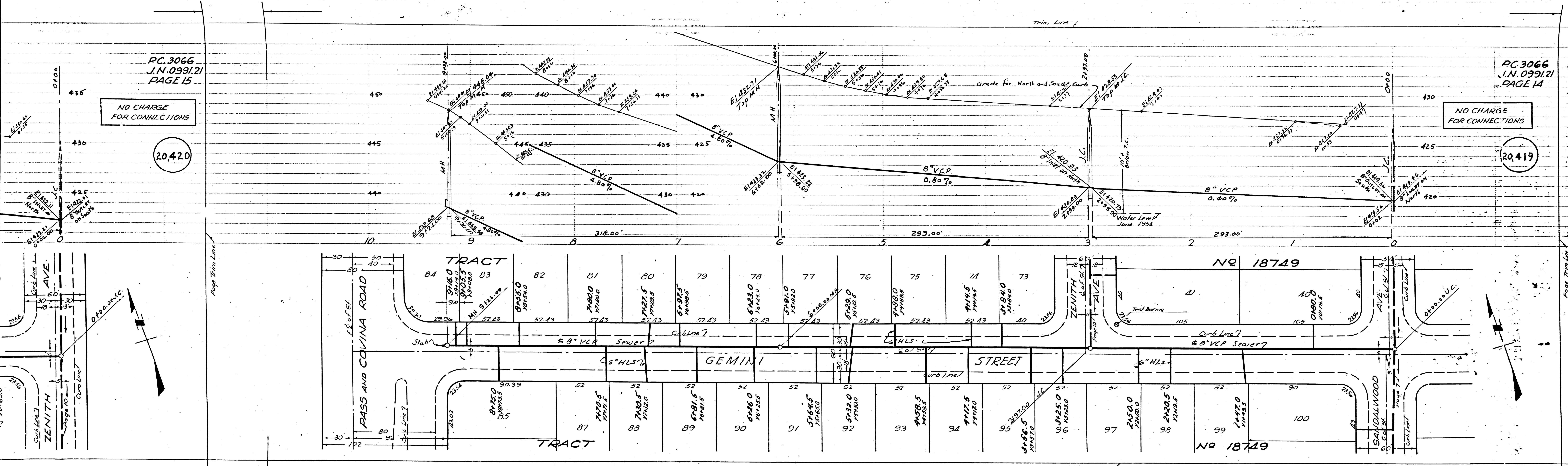
NO CHARGE
FOR CONNECTIONS

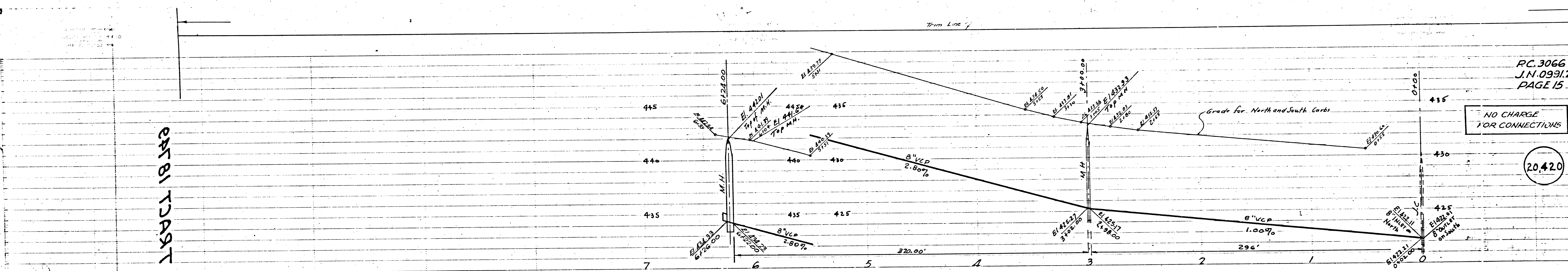
20,420

PC 3066
J.N. 0991.21
PAGE 1A

NO CHARGE
FOR CONNECTIONS

20,419

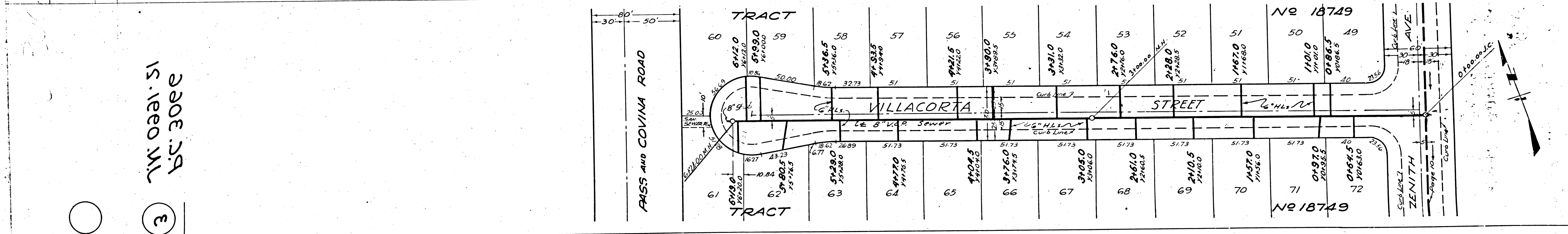




PC. 3066
J.N. 0931.2
PAGE 15

NO CHARGE
FOR CONNECTIONS

20,420



3200.29
15.1000 ML

3

