

BM 5Y-1279 El 243.395  
Lead & Bench nail in old conc.  
headwall 15' W of E of Peck Rd  
(Proposed) 8' x 100' N. of E. Produced  
at Slack Rd.

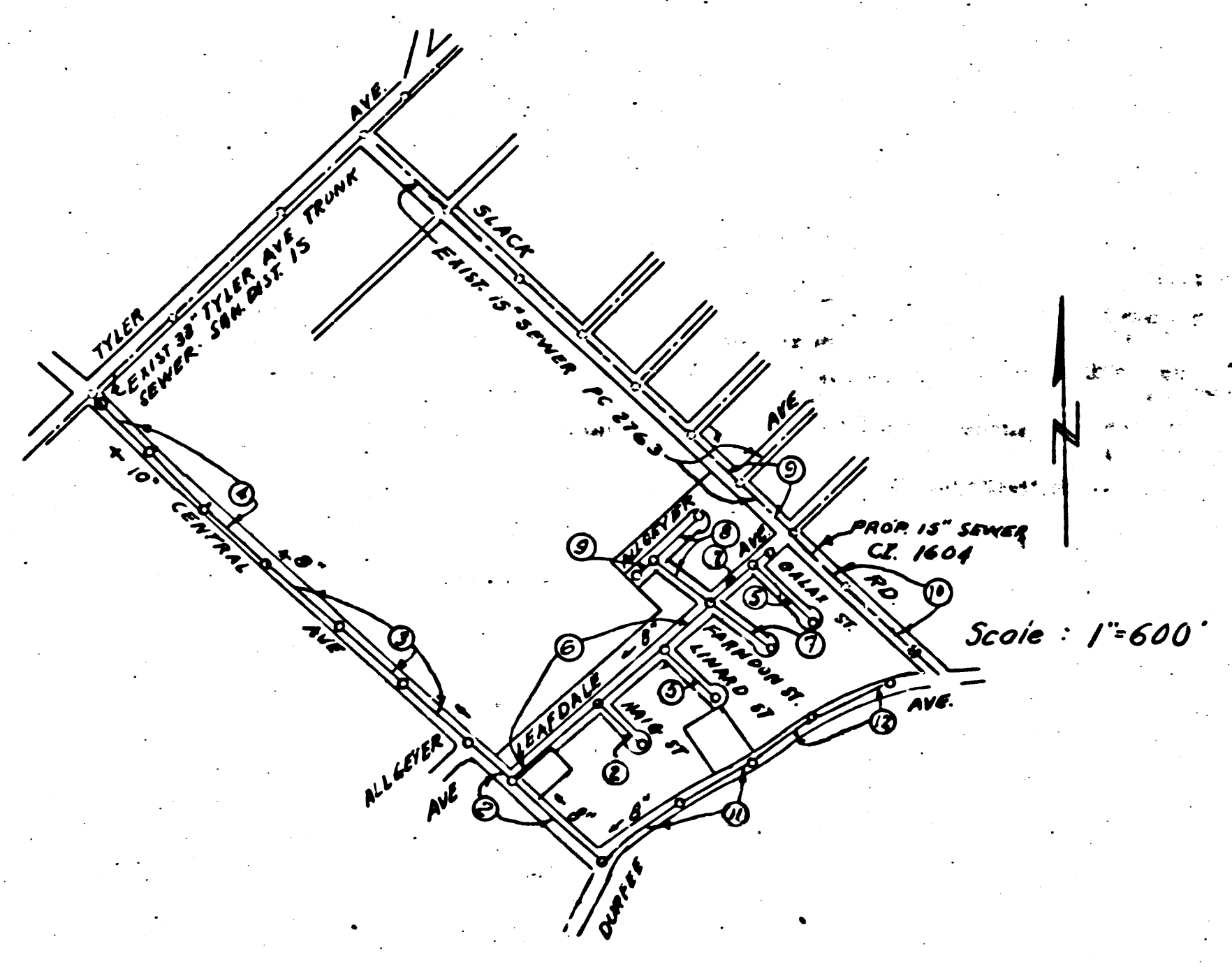
Trim Line 2  
**PUEENTE BLDG DIST. N° 2**

- NOTE:**  
Provide stakes on the property lines or property lines produced at right angles to the sewer line at the center line of each manhole.  
The owner or his authorized representative shall furnish the County Engineer with grade sheets and stations for all house laterals and Y branches and shall provide stakes for them at their proper locations with stationing plainly marked. Any change in location shall be requested in writing by the owner or his representative.  
No revisions shall be made in these plans without the approval of the County Engineer.
1. Use standard manhole frames and covers, S-a-117. Except as noted.
  2. Use standard strength pipe except as noted.
  3. Use Joint Compound for all vitrified clay pipe joints, per Spec's Sec. 31
  4. Resurface all trench within paved area to meet L.A. County Road Dept. or Calif. State Highway Dept. requirements in accordance with permit.
  5. Encase four feet of sewer at points of interference with poles, S-a-119.
  6. House laterals to be constructed with inverts at property line... 6" feet below curb grade except as noted.
  7. All structures shall be brick sewer structures, S-a-104. Except as noted.
  8. Manhole tops in unimproved Rights-of-Way to be 6" above finish grade.
  9. For all-wable leakage test, use Formula No. 2, Spec's., Sec. 51.
  10. Figures in circle at ends of house laterals indicate depth below curb grade.

before breaking into any existing structure and before final acceptance of this work. County Sanitation District should be notified in order that required inspection may be made.

COLLECT CHARGES AS INDICATED  
Revised 7-20-54

SHEET	PAGES
1	1-5
2	6-10
3	11-12



INDEX MAP  
TRACT N° 19843  
PC 3067 J.N. 029151

Revised 10-27-54 M. Hansen

PROFILE, ALIGNMENT AND GRADE OF  
**SANITARY SEWERS**  
TO BE CONSTRUCTED IN  
**TRACT N° 19843**

PC 3069  
J.N. 029151  
Page 1

PRIVATE CONTRACT NO. 3069  
W.S. 37  
SHEET 1 OF 3 SHEETS  
Scale: VERT. 1"=4'  
HORIZ. 1"=40'  
JUNE 1954  
PREPARED IN THE OFFICES OF  
**ADAMS & ELLS**  
By *A. H. Hughes* Reg. C. E. No. 765  
FOR LEGEND SEE PLAN NO. S-a-64

19,153  
(12)

**NOTE:**  
Grades to which this improvement is to be constructed are shown on plans and profiles. Grade points for top of curbs, center line of streets, or center line of alleys are shown by circles on profiles. At all points between designated points the grade shall be established so as to conform to a straight line drawn between said designated points.  
Elevations are in feet above U.S.G.S. datum or mean sea level.  
This drawing and the data hereon are hereby made a part of the specifications.  
Work shall be constructed according to specifications on file in the office of the County Engineer and shall be prosecuted only in the presence of the County Engineer.  
Before work can be started, the contractor must obtain a permit to excavate in County streets from the L.A. County Road Dept., 108 W. 2nd St. and make a deposit with the County Engineer, 733 L.A. County Engineering Building, sufficient to cover the cost of construction inspection and record plans.  
Approval of this plan by the County of Los Angeles does not constitute a representation as to the accuracy of the location or the existence or non-existence of any underground utility, pipe, or structure within the limits of this project. This note applies to all sheets.  
If work is to be done in a State Highway, a permit must be obtained from the State of California, Division of Highways, 120 South Spring Street.

**COUNTY OF LOS ANGELES, CALIFORNIA**  
Approved, William J. Fox, County Engineer  
Approved, A. M. Rawn  
CHIEF ENGR. CO. SAN. DIST. NO. 15  
By *A. H. Hughes* DIST. SANITATION ENGINEER  
Checked by *R. K. ...* 7-20-54  
Office of County Engineer, Reg. C. E. No. 2262

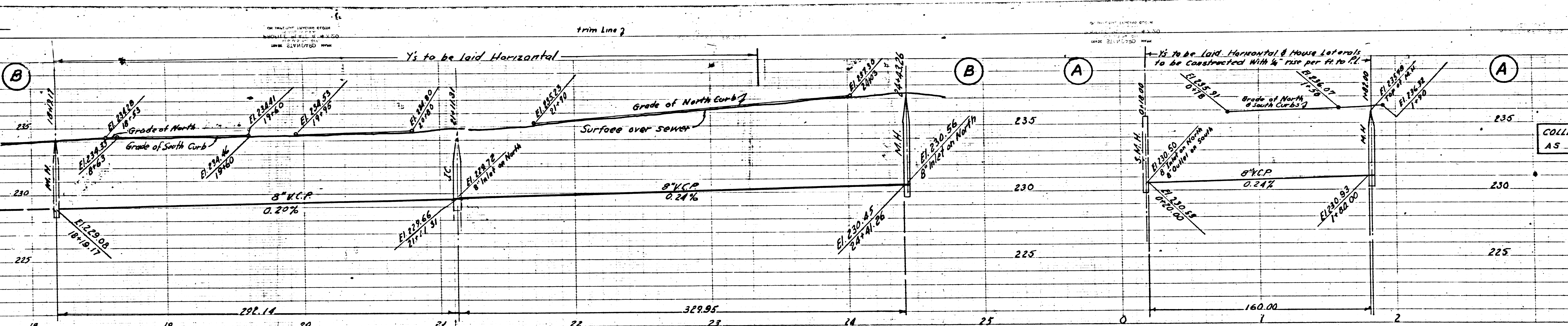
TRACT N° 19843  
PC 3069  
J.N. 029151  
19,153  
12

Rel

PC 3069  
J.N. 6991.51  
Page 3

COLLECT CHARGES  
AS INDICATED

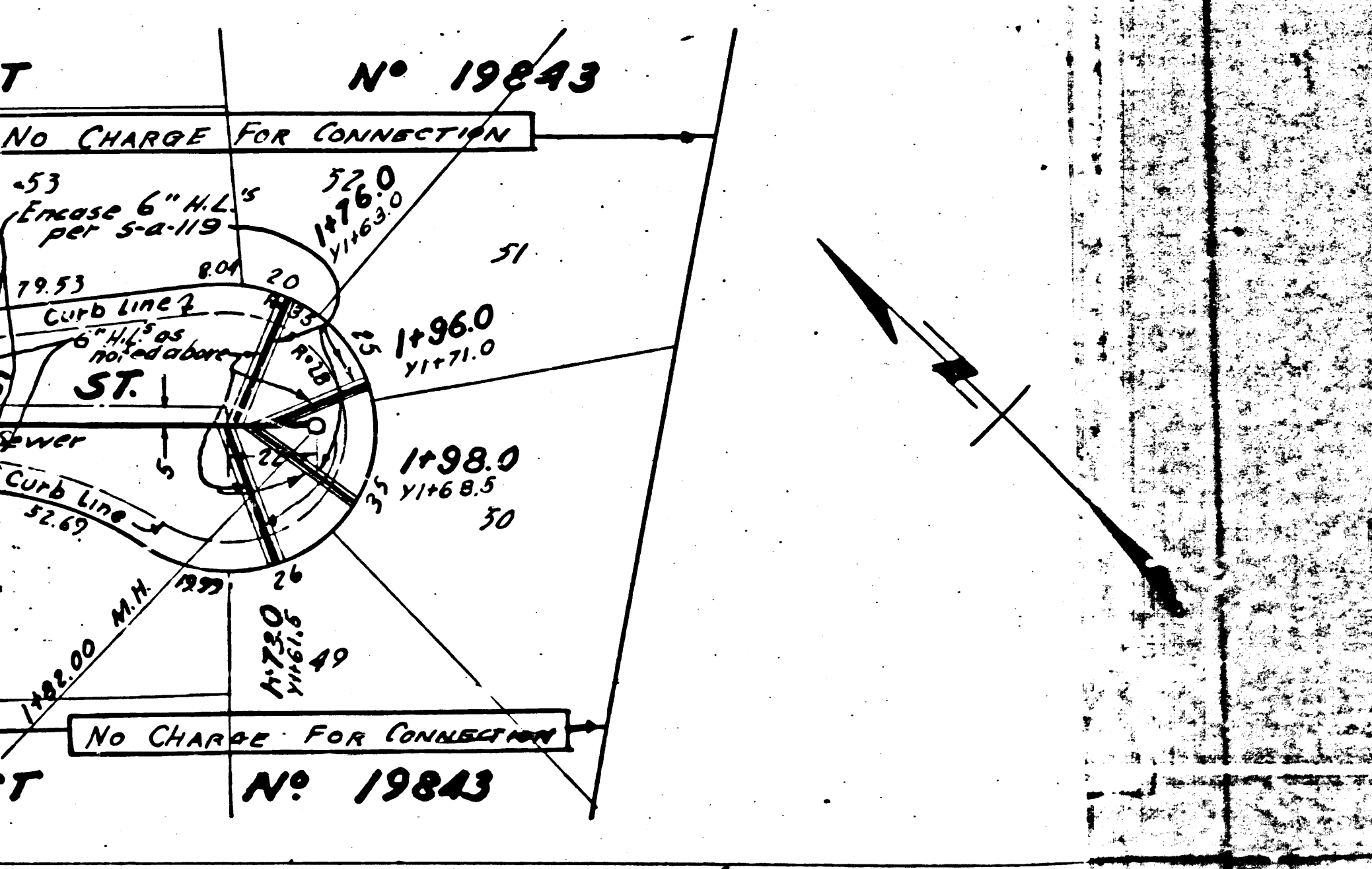
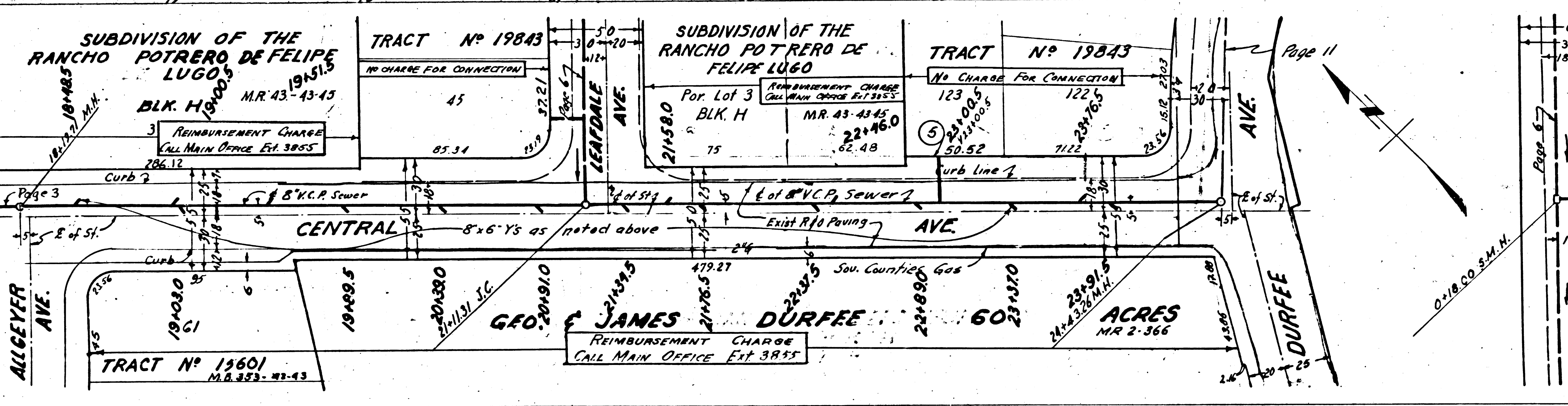
19,155



PC 3069  
J.N. 6991.51  
Page 3

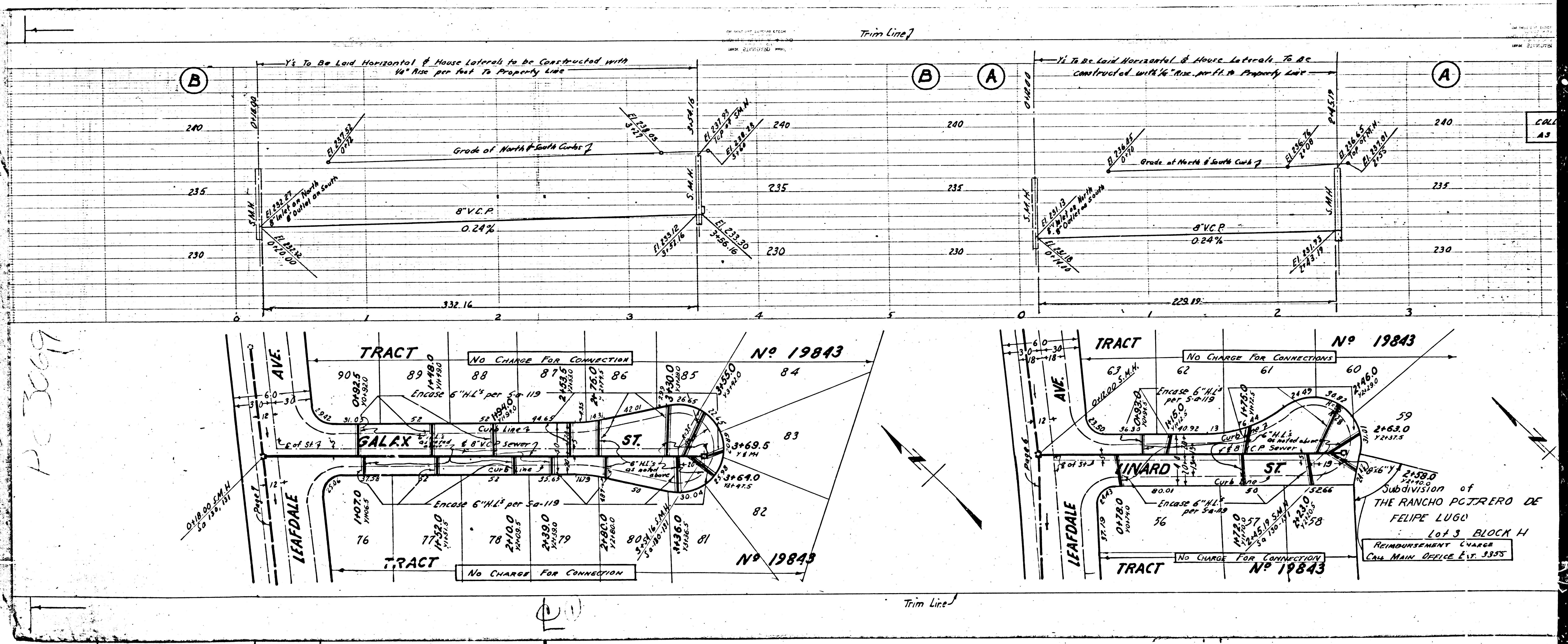
COLLECT CHARGES  
AS INDICATED

19,174





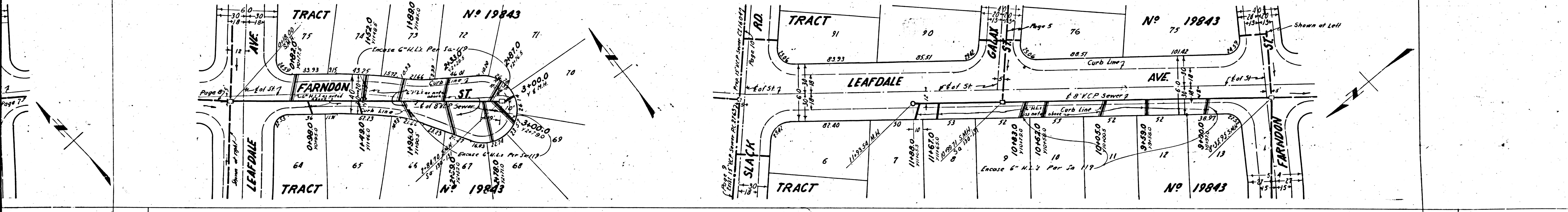
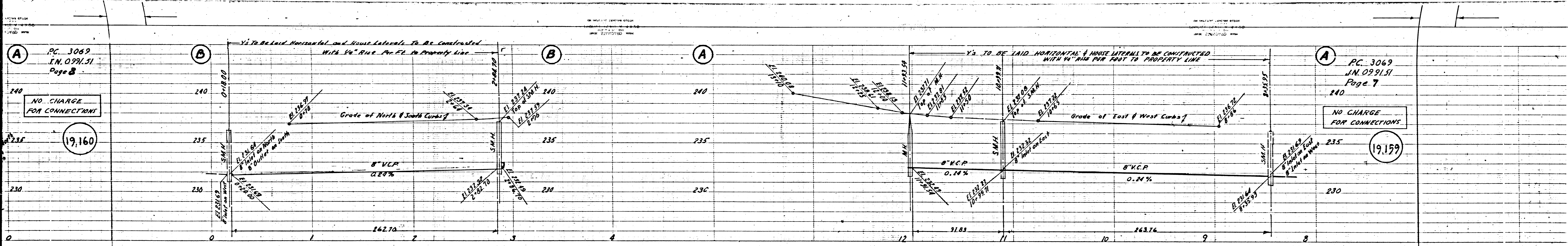




PC 3069

Subdivision of  
THE RANCHO POZORERO DE  
FELIPE LUGO  
Lot 3 Block 4  
REIMBURSEMENT CHARGE  
CALL MAIN OFFICE EXT. 3335

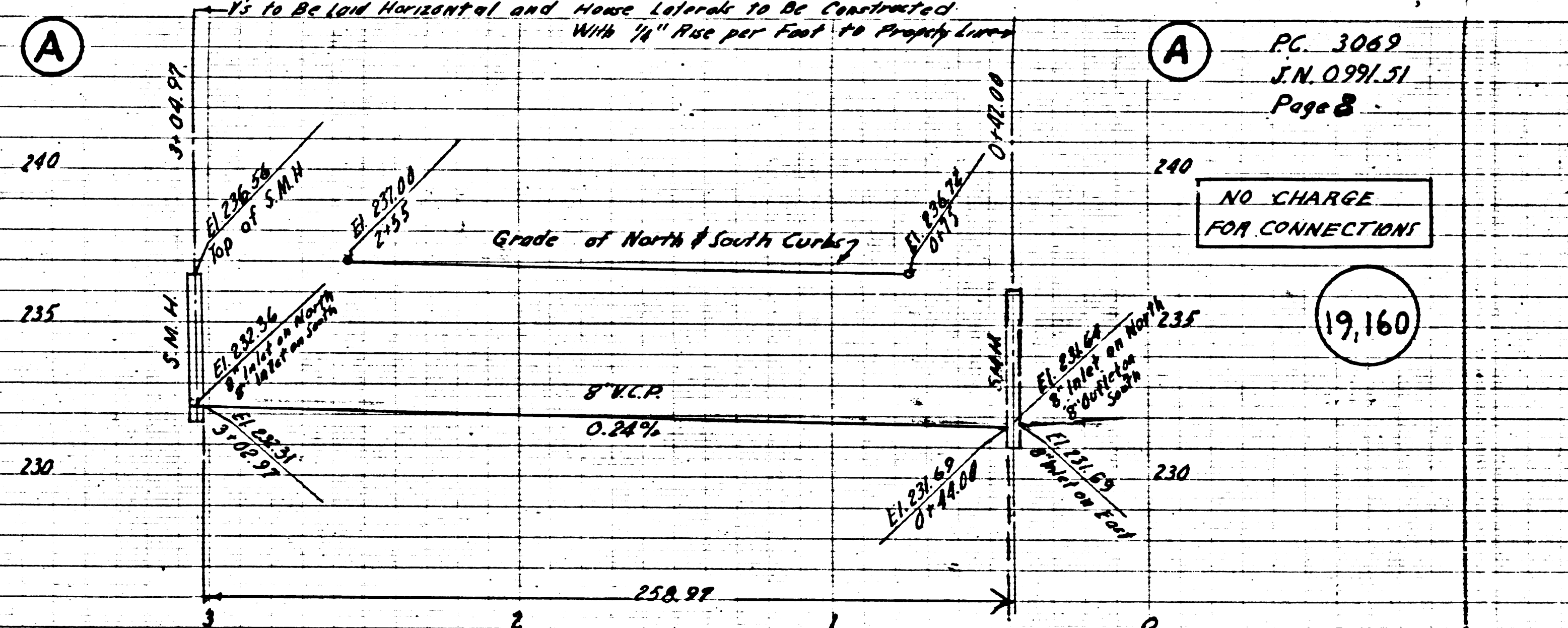
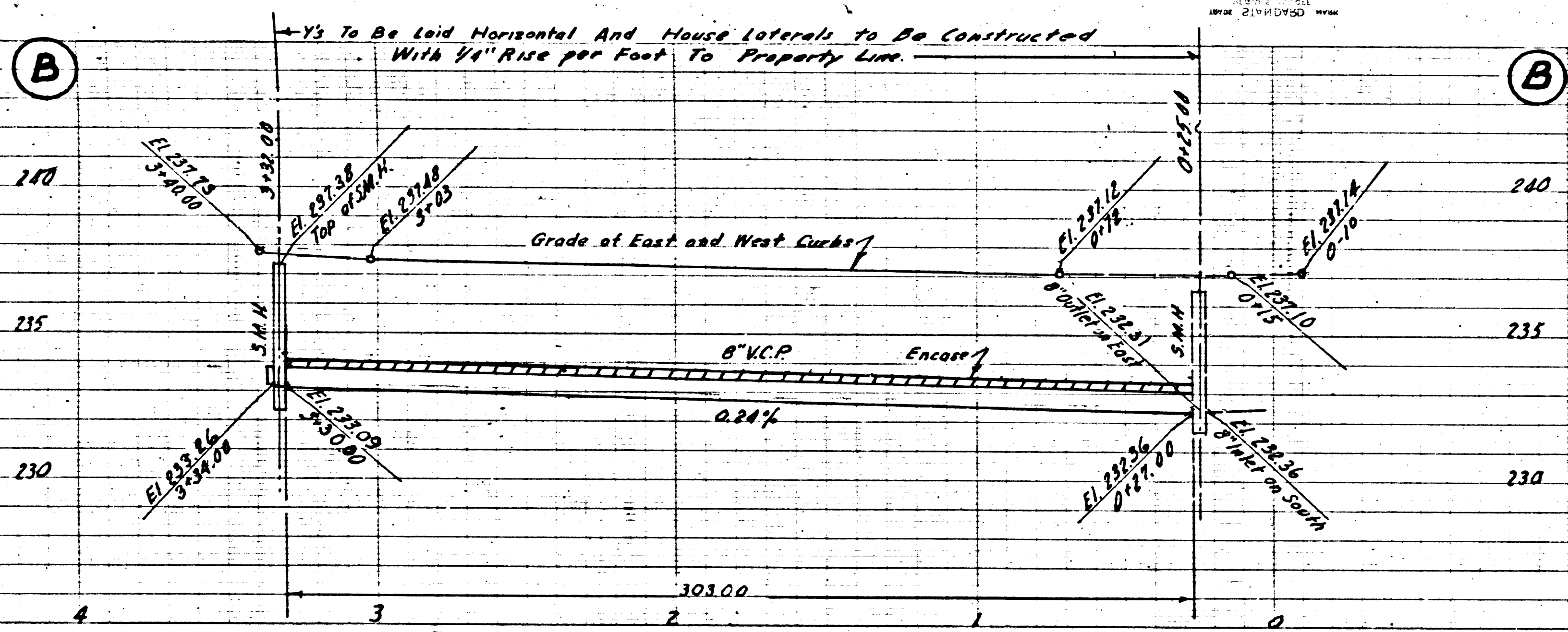




PC 3069  
N. 0391.51  
Page 9

CHANGES  
INDICATED

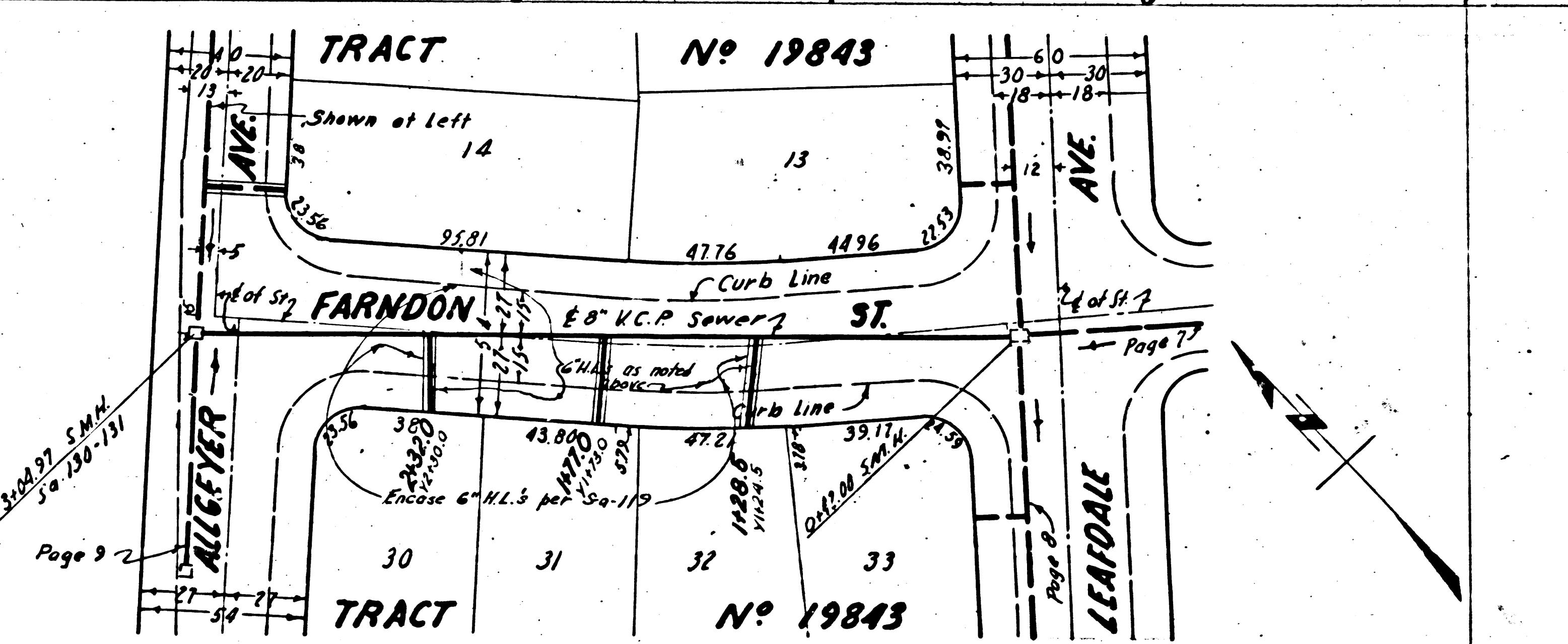
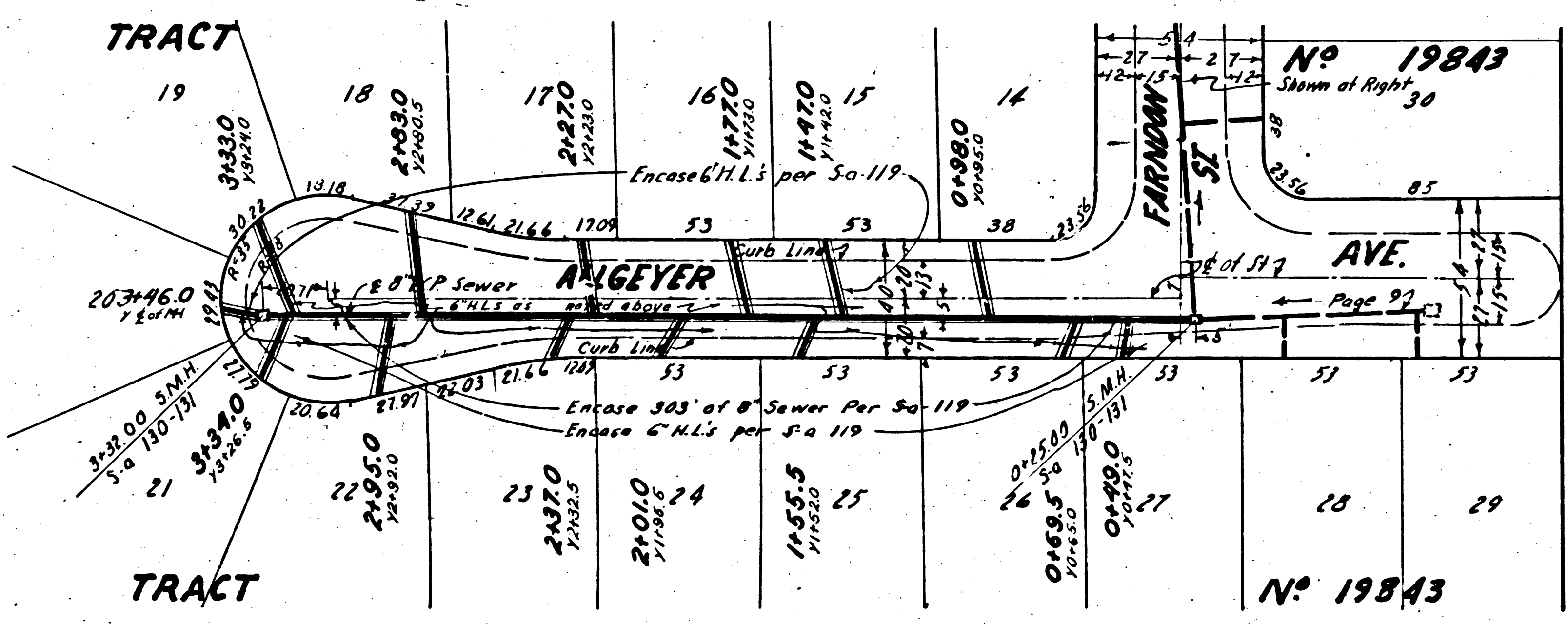
19,161



PC 3069  
N. 0391.51  
Page 8

NO CHARGE  
FOR CONNECTION

19,160





PC. 3069  
J.N. 0991.51  
Page 10

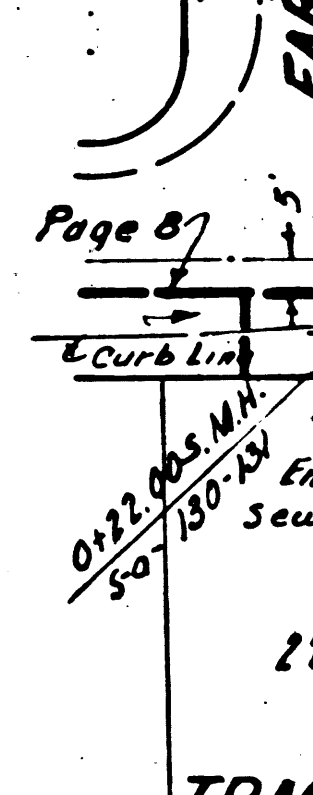
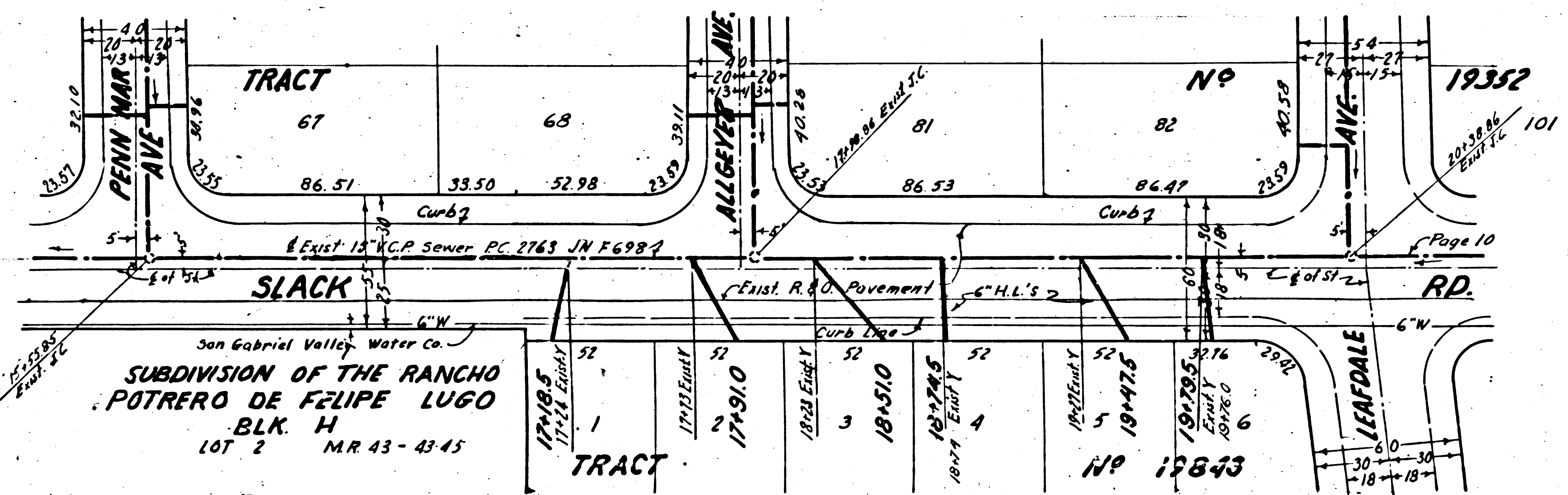
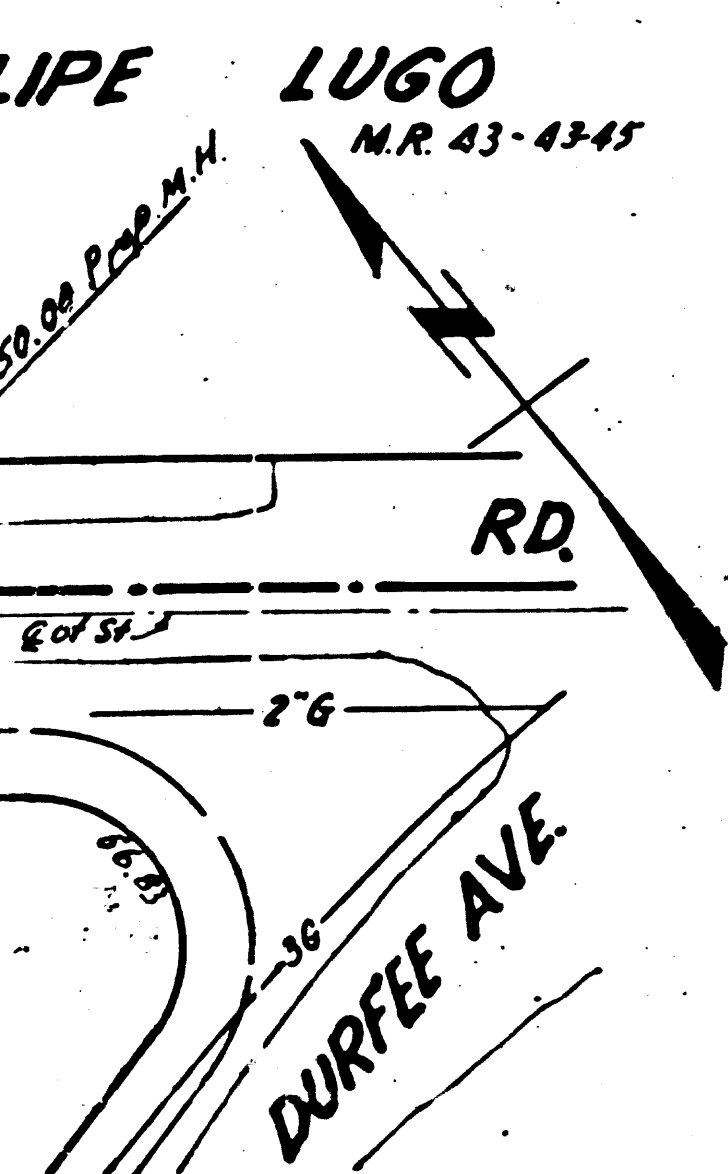
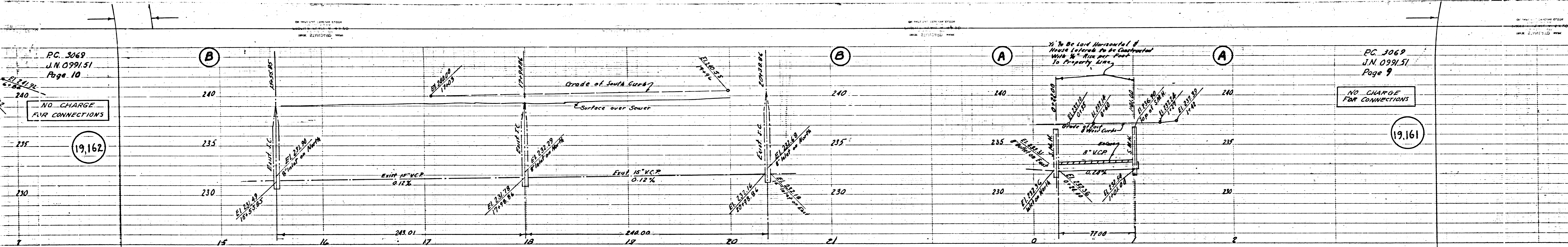
PC. 3069  
J.N. 0991.51  
Page 9

NO CHARGE  
FOR CONNECTIONS

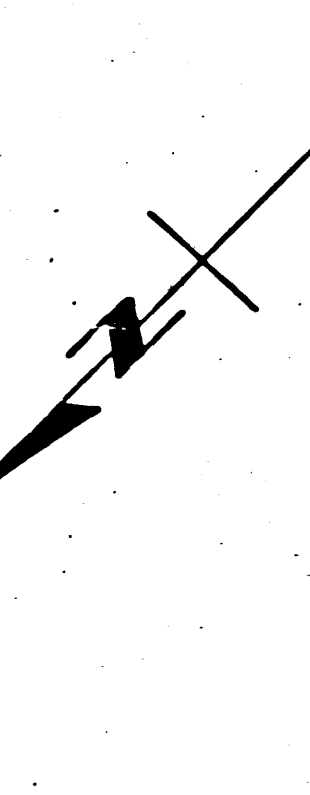
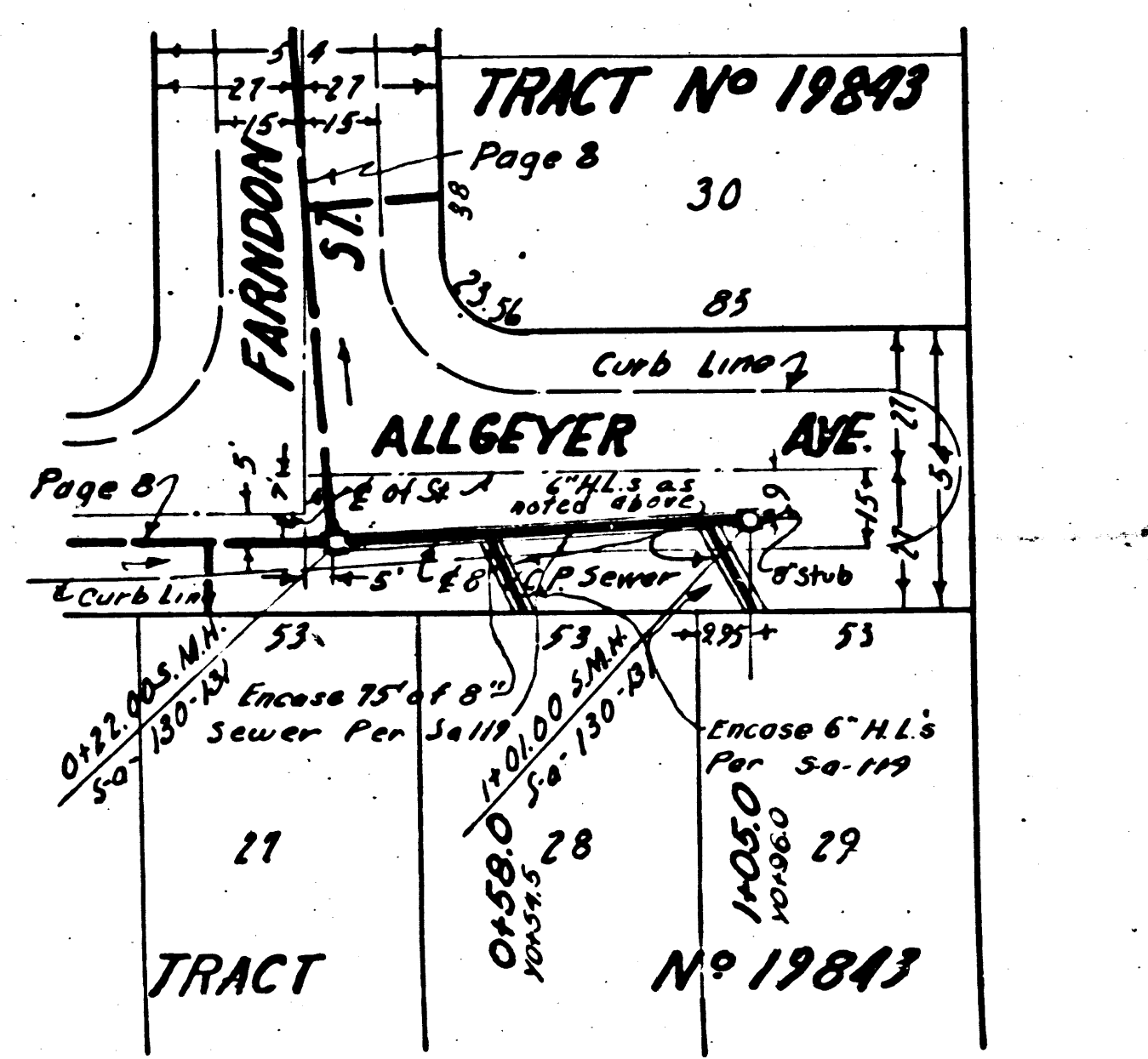
NO CHARGE  
FOR CONNECTIONS

19,162

19,161



(2)



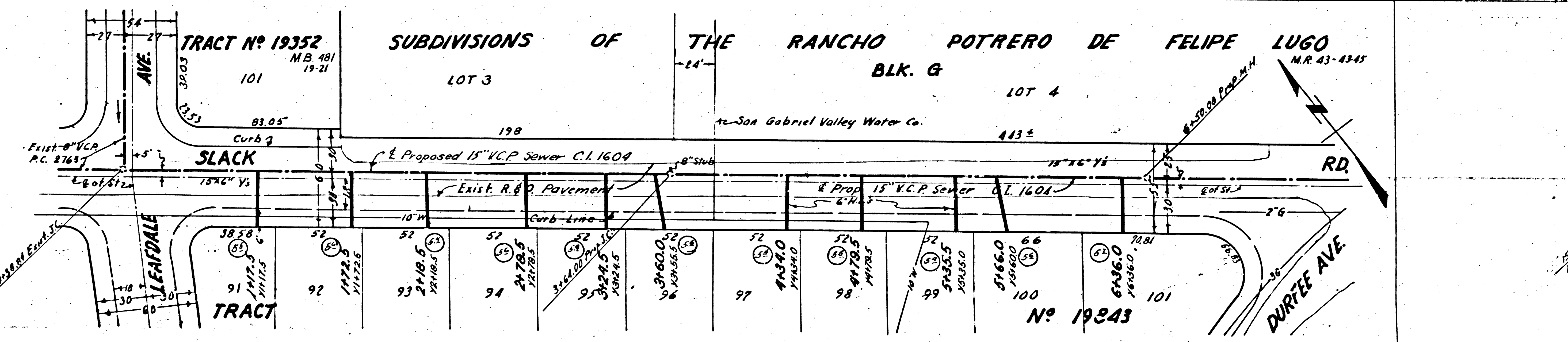
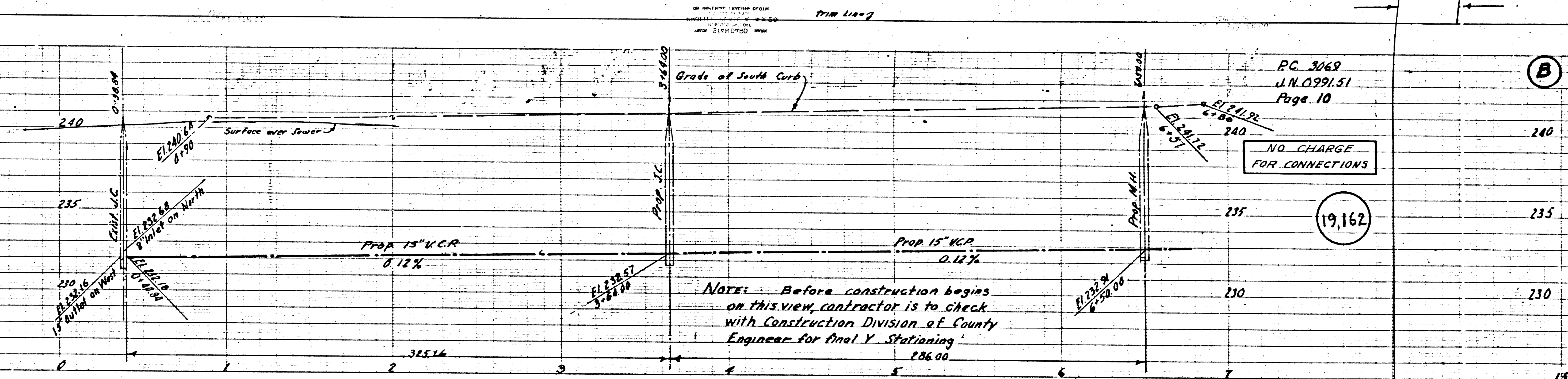
PC 3069

PC 3069  
J.N. 0991.51  
Page 10

NO CHARGE  
FOR CONNECTIONS

19,162

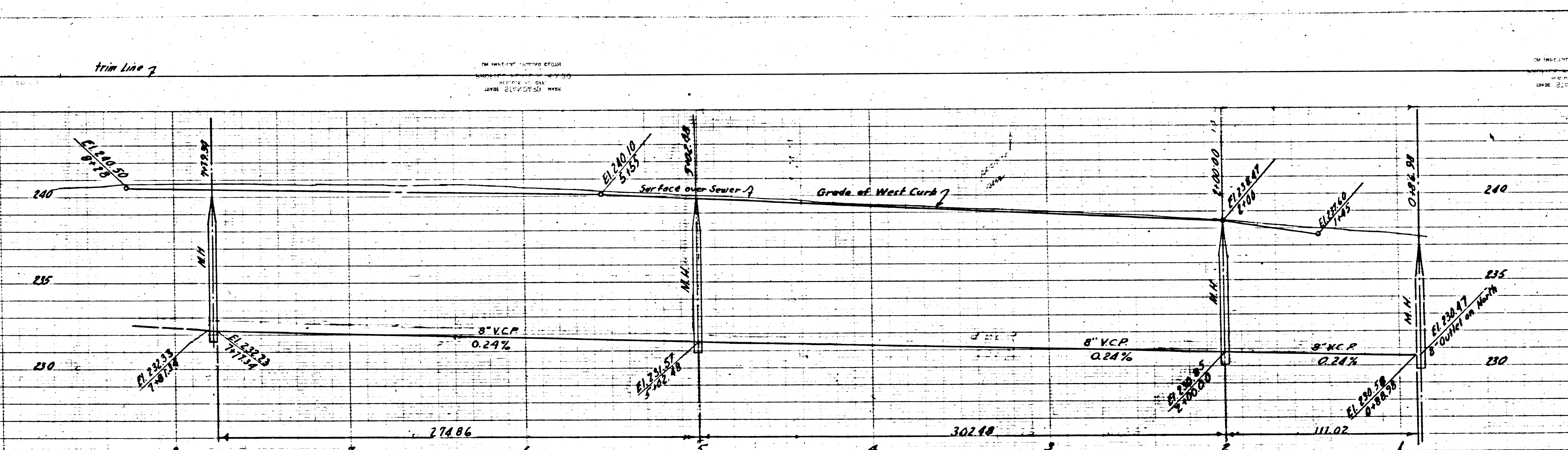
NOTE: Before construction begins  
on this view, contractor is to check  
with Construction Division of County  
Engineer for final Y Stationing.



P.C. 3069  
I.N. 0991.51  
Page 12.

NO CHARGE INDICATED

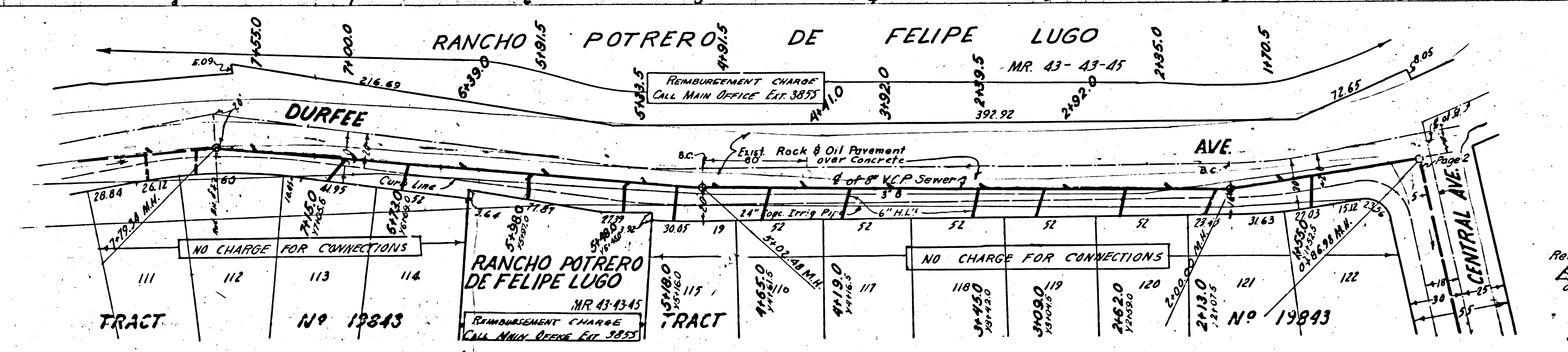
19,164



P.C. 3069  
I.N. 0991.51  
Page 11

COLLECT CHARGES AS INDICATED

19,163



Revised Approved:  
H. S. ...  
Office of the County Engineer

P.C. 3069

I.N. 0991.51

Page 12

19,164

TRACT No 19843

