

INDEX MAP  
SCALE: 1" = 600'  
TRACT No 20453  
P.C. 3071 J.N. 0391.71

SHEET	PAGES
1	1-4
2	5-8
3	9-11
4	12-14

NOTE:  
Figures in Circles  
indicate Page No's

**PALMDALE BLDG. DIST. No (B-P)**

- NOTE:  
Provide stakes on the property lines or property lines produced at right angles to the sewer line at the center line of each manhole.  
No representative of the County Engineer will survey or layout any portion of the work.  
The owner or his authorized representative shall furnish the County Engineer with grade sheets and stations for all house laterals and Y branches and shall provide stakes for them at their proper locations with stationing plainly marked. Any change in location shall be requested in writing by the owner or his representative.  
No revisions shall be made in these plans without the approval of the County Engineer.
1. Use standard manhole frames and covers, S-a-117.
  2. Use standard strength pipe except as noted.
  3. Use cement mortar for all vitrified clay pipe joints.
  4. Resurface all trench within paved area to meet L.A. County Road Dept. or California State Highway Dept. requirements in accordance with permit.
  5. Encase four feet of sewer at points of interference with poles, S-a-119.
  6. House laterals to be constructed with inverts at property line 6 feet below curb grade except as noted.
  7. All structures shall be brick sewer structures, S-a-104.
  8. For allowable leakage test, use Formula No. 1 Spec'n. Sec. 51.
  9. Manhole tops in unimproved Rights-Of-Way to be level with finish grade.
  10. Ball all pipe joints that are within 20 feet of any Property Line or in Sanitary Sewer R/W's with 4" of Cement Mortar.

B.M. AV-47, Elev. = 2670.219, F.D. 1952, pg. 12  
1 1/4" I.P. & Cut spk. in Conc. in Well, 8" down  
6th STREET EAST & AVENUE R. at 4 Int.

**COLLECT CHARGES  
AS INDICATED**  
*L. Luster 5-28-54*

*checked 5-18-55 M. L. ...*

PROFILE, ALIGNMENT AND GRADE OF  
**SANITARY SEWERS**  
TO BE CONSTRUCTED IN

**TRACT No 20453**  
AND  
**5TH STREET EAST**  
AND  
**AVENUE Q**  
PRIVATE CONTRACT NO. 3071  
W. S. 65  
4 SHEETS  
14 PAGES

Scale: VERT. 1" = 4'  
HORIZ. 1" = 40'  
AUGUST 1954  
PREPARED IN THE OFFICES OF  
**ARTHUR G. ROSENTHAL & ASSOCIATES**

*Arthur G. Rosenthal*  
Reg. C. E. No. 2355  
FOR LEGEND SEE PLAN NO. S-a-64

NOTE:  
Grades to which this improvement is to be constructed are shown on plans and profiles. Grade points for top of curbs, center line of streets, or center line of alleys are shown by circles on profiles. At all points between designated points the grade shall be established so as to conform to a straight line drawn between said designated points.  
Elevations are in feet above U.S.G.S. datum or mean sea level.  
This drawing and the data hereon are hereby made a part of the specifications.  
Work shall be constructed according to specifications on file in the office of the County Engineer and shall be prosecuted only in the presence of the County Engineer.  
Before work can be started, the contractor must obtain a permit to excavate in County streets from the L.A. County Road Dept., 108 W. 2nd St. and make a deposit with the County Engineer, 733 L.A. County Engineering Building, sufficient to cover the cost of construction inspection and record plans.  
Approval of this plan by the County of Los Angeles does not constitute a representation as to the accuracy of the location or the existence or non-existence of any underground utility, pipe, or structure within the limits of this project. This note applies to all sheets.  
If work is to be done in a State Highway, a permit must be obtained from the State of California, Division of Highways, 120 South Spring Street.

**COUNTY OF LOS ANGELES, CALIFORNIA**  
Approved, William J. Fox, County Engineer  
Approved, A. M. Rawn  
CHIEF ENGR. CO. SAN. DIST. NO. 20  
*A. P. Collins*  
SANITATION ENGINEER  
Checked By: *R. S. ...*  
Office of County Engineer, Reg. C. E. No. 1860

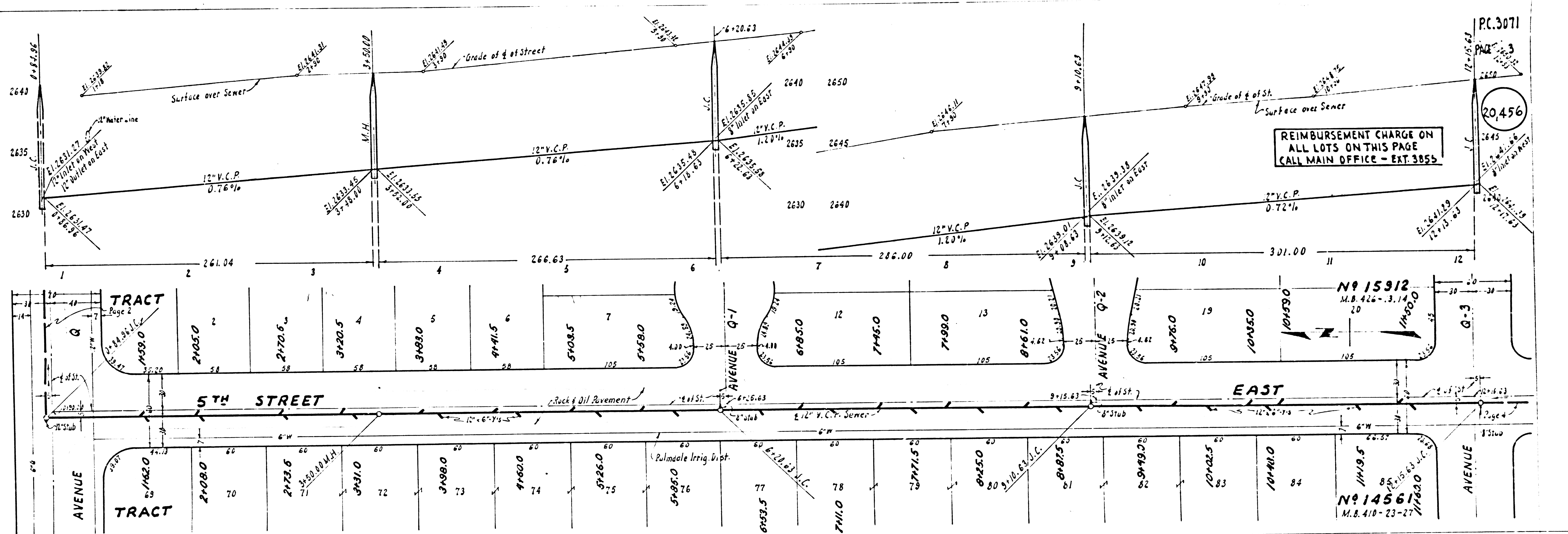
P.C. 3071  
J.N. 0391.71  
PAGE 1

20,454

TRACT No 20453

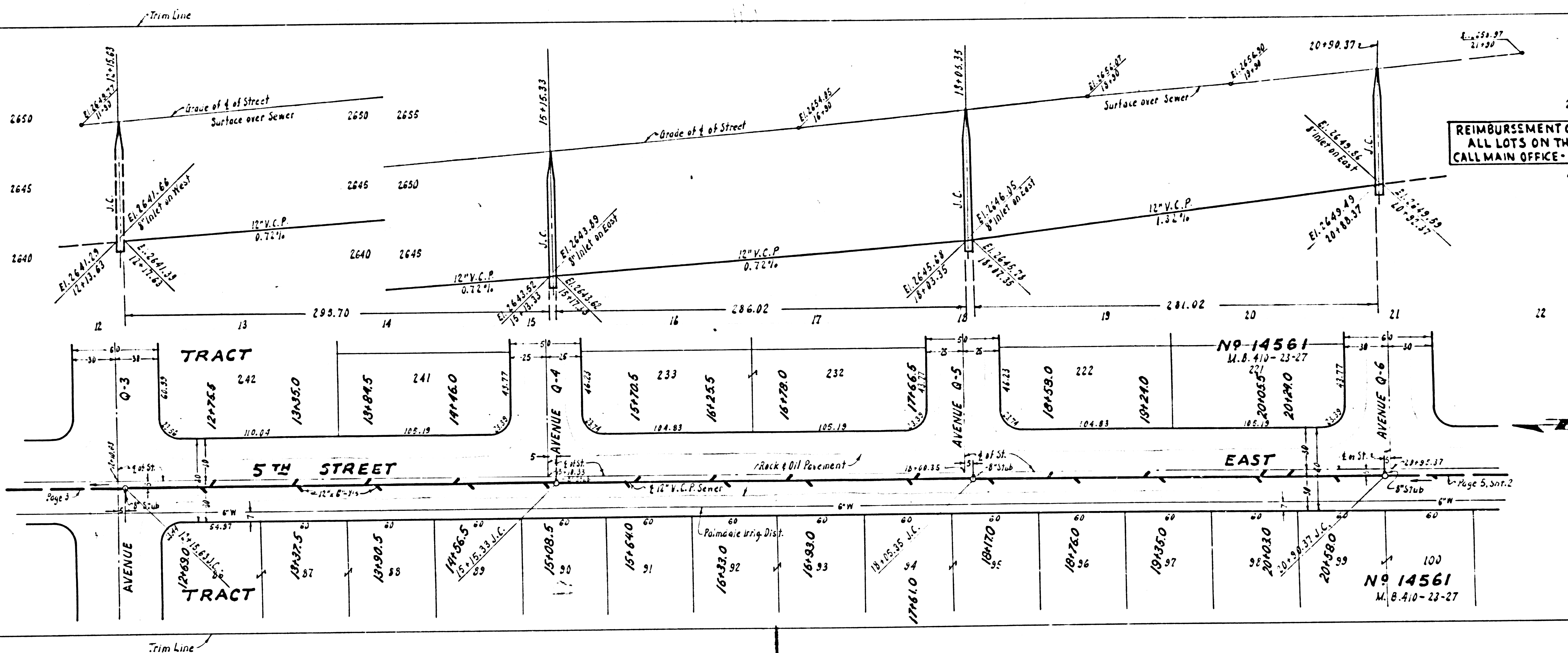
P.C. 3071





711 001111  
① P.C. 3071

TRACT No 20453



P.C. 3071  
PAGE 4

REIMBURSEMENT CHARGE ON ALL LOTS ON THIS PAGE CALL MAIN OFFICE - EXT. 3885

20,457

No 14561  
M.B. 410-23-27

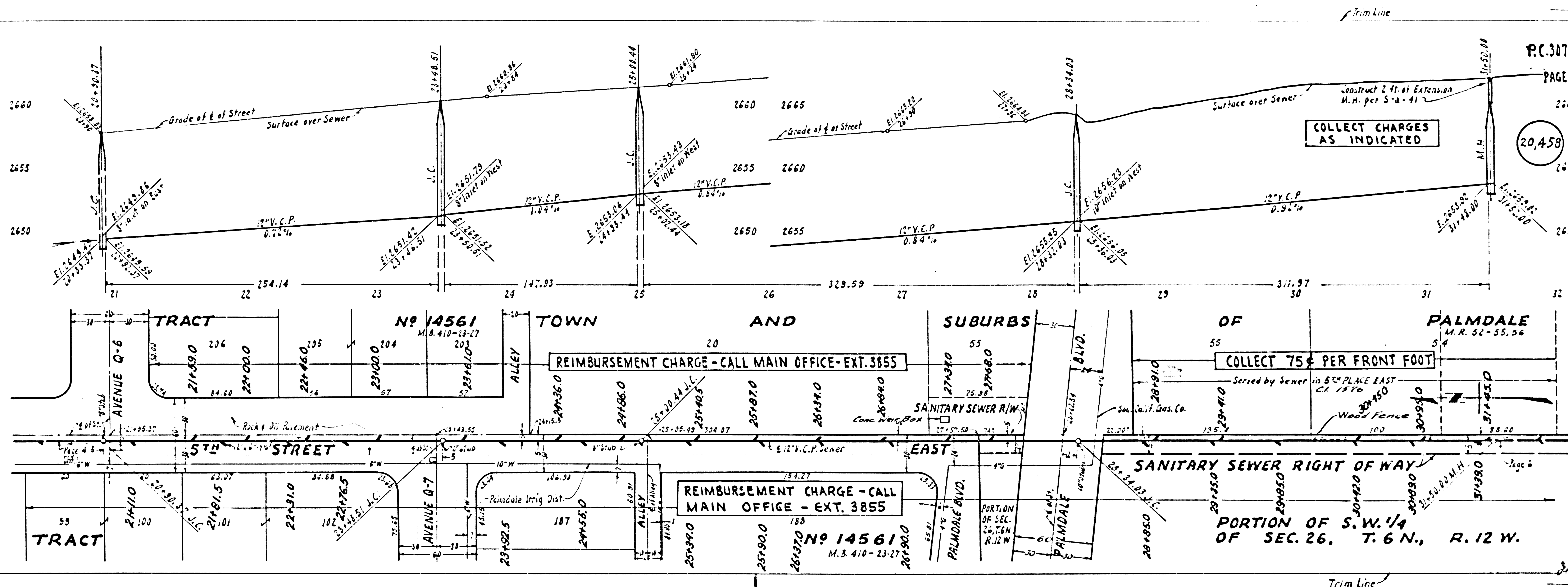
DESIGNED

20,459

2670

2665

2660

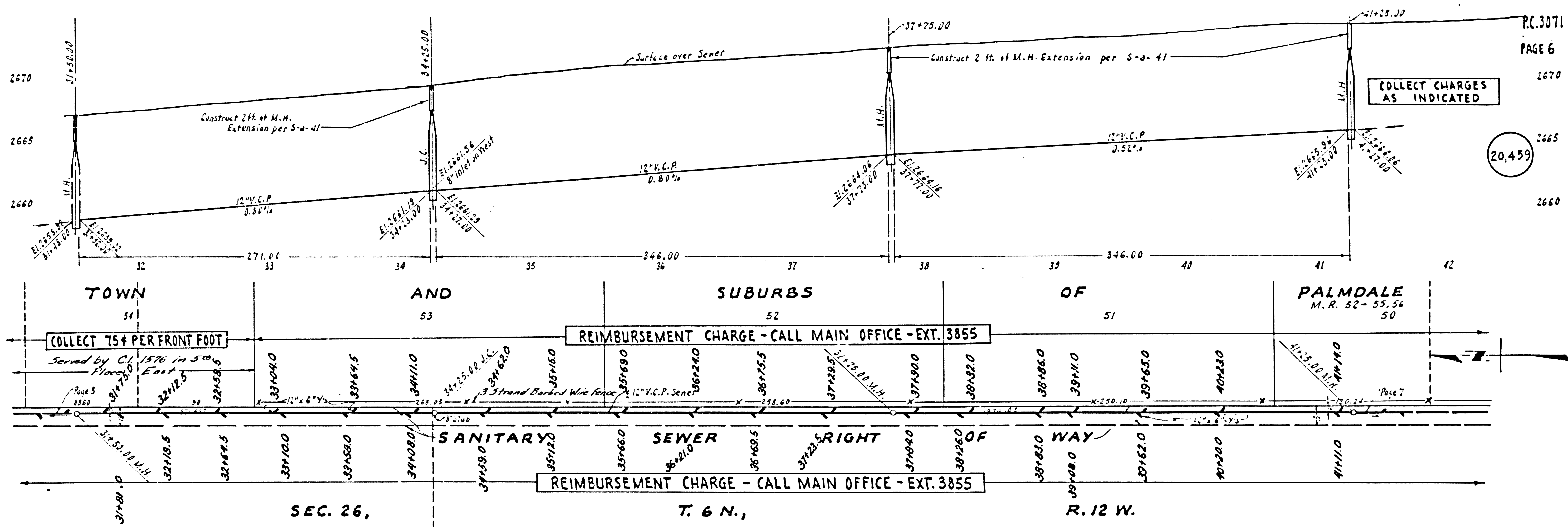


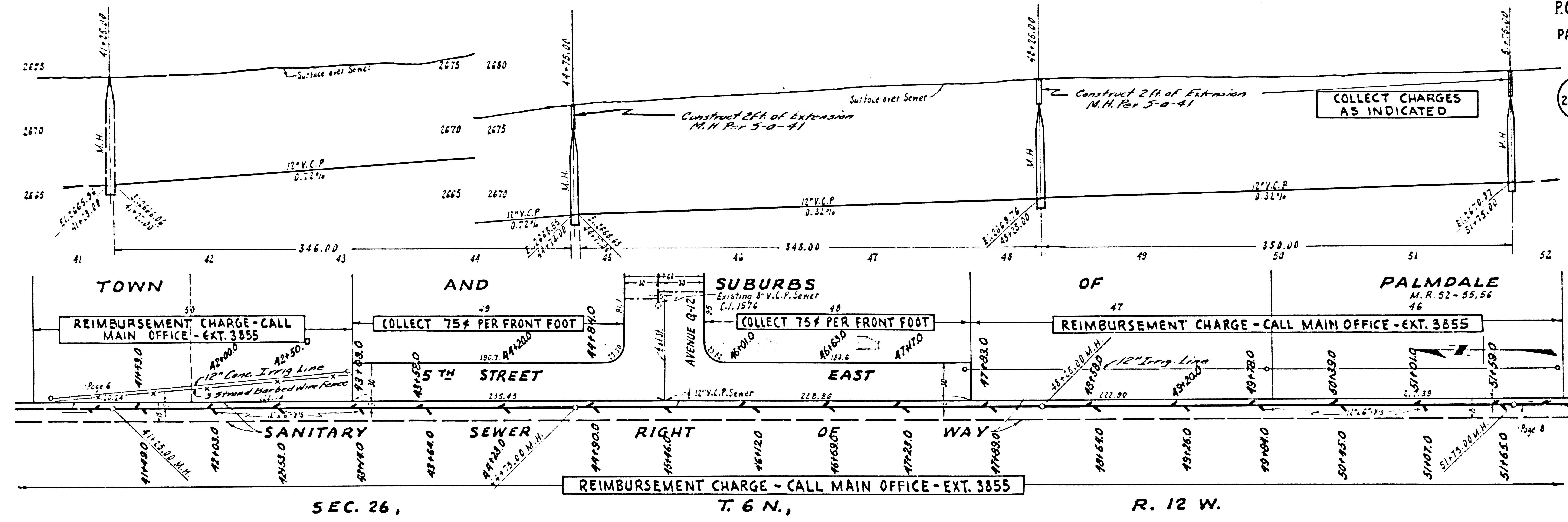
20,458

TRACT No 20453

20,460

20,459





TOWN AND SUBURBS OF PALMDALE

REIMBURSEMENT CHARGE - CALL MAIN OFFICE - EXT. 3855

COLLECT 75¢ PER FRONT FOOT

COLLECT 75¢ PER FRONT FOOT

REIMBURSEMENT CHARGE - CALL MAIN OFFICE - EXT. 3855

REIMBURSEMENT CHARGE - CALL MAIN OFFICE - EXT. 3855

SEC. 26,

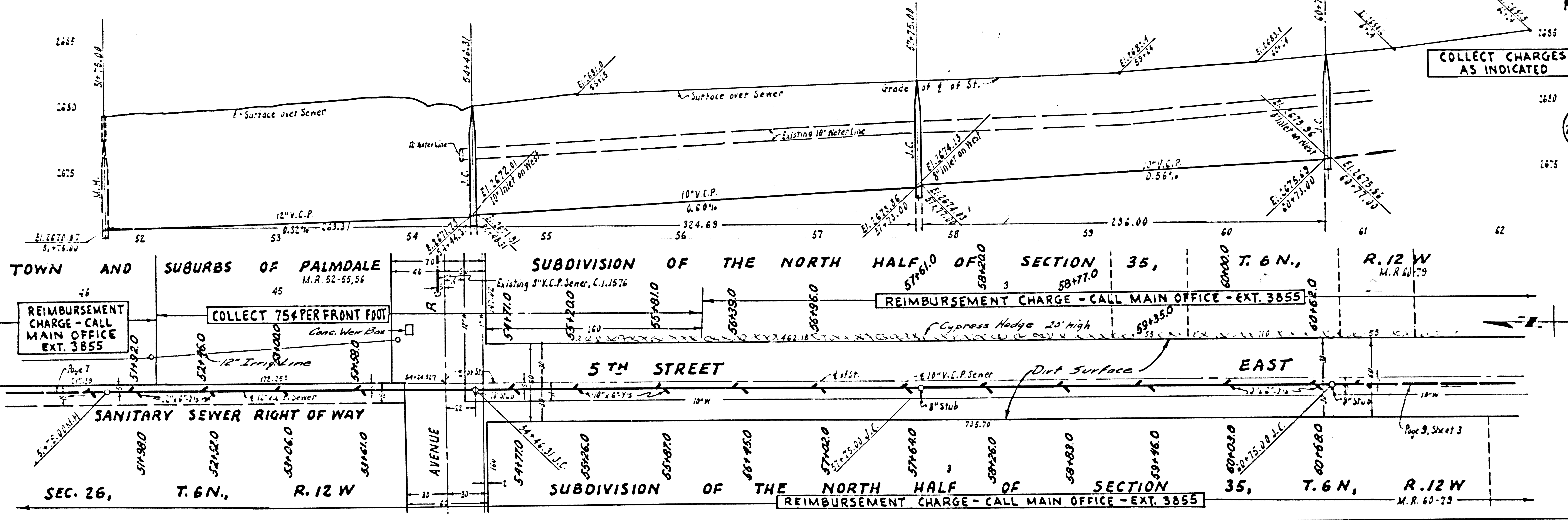
T. 6 N.,

R. 12 W.

2 PC. 3071

TRACT No 20453

Trim Line



COLLECT CHARGES AS INDICATED

20,461

REIMBURSEMENT CHARGE - CALL MAIN OFFICE - EXT. 3855

Trim Line

PC. 3071  
PAGE B

TOWN AND SUBURBS OF PALMDALE  
M.R. 52-55, 56

SUBDIVISION OF THE NORTH HALF OF SECTION 35, T. 6 N., R. 12 W.  
M.R. 60-79

REIMBURSEMENT CHARGE - CALL MAIN OFFICE - EXT. 3855

5TH STREET EAST

SANITARY SEWER RIGHT OF WAY

AVENUE

SEC. 26, T. 6 N., R. 12 W.

SUBDIVISION OF THE NORTH HALF OF SECTION 35, T. 6 N., R. 12 W.  
M.R. 60-79

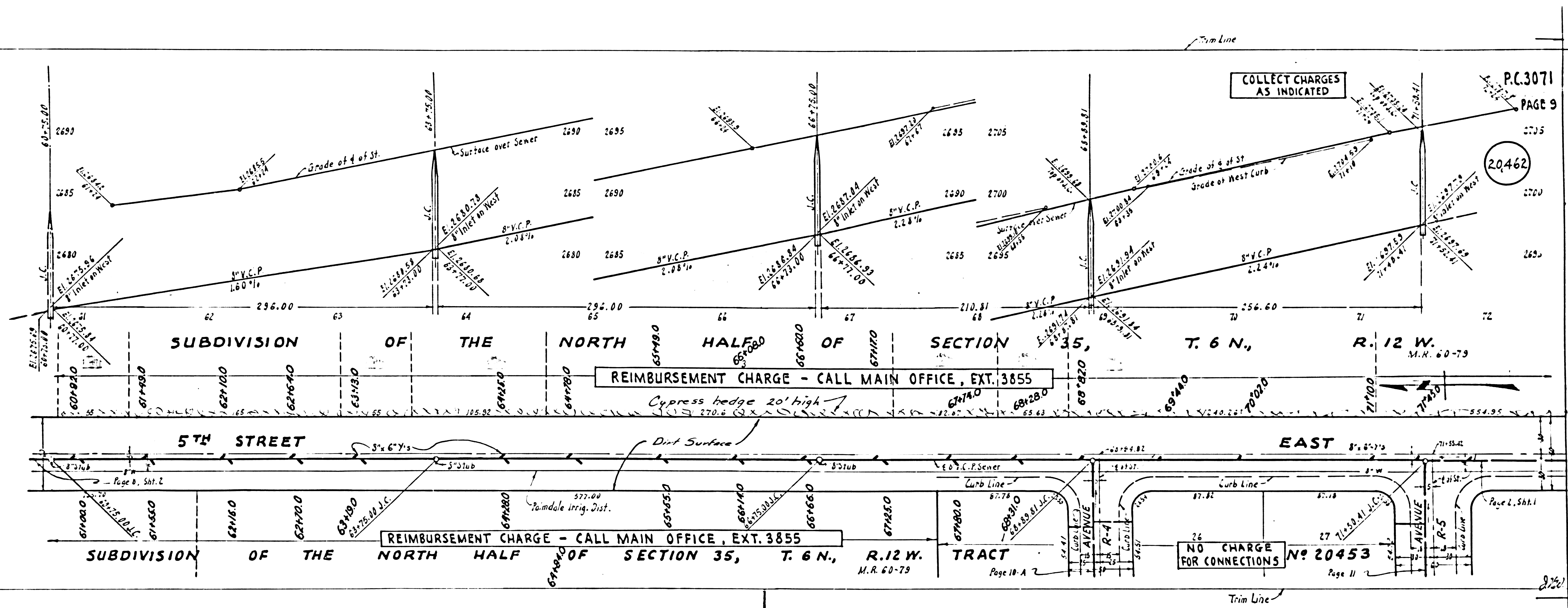
REIMBURSEMENT CHARGE - CALL MAIN OFFICE - EXT. 3855

Page 9, Sheet 3



P.C. 3071  
PAGE 10  
2705  
20,463  
2700

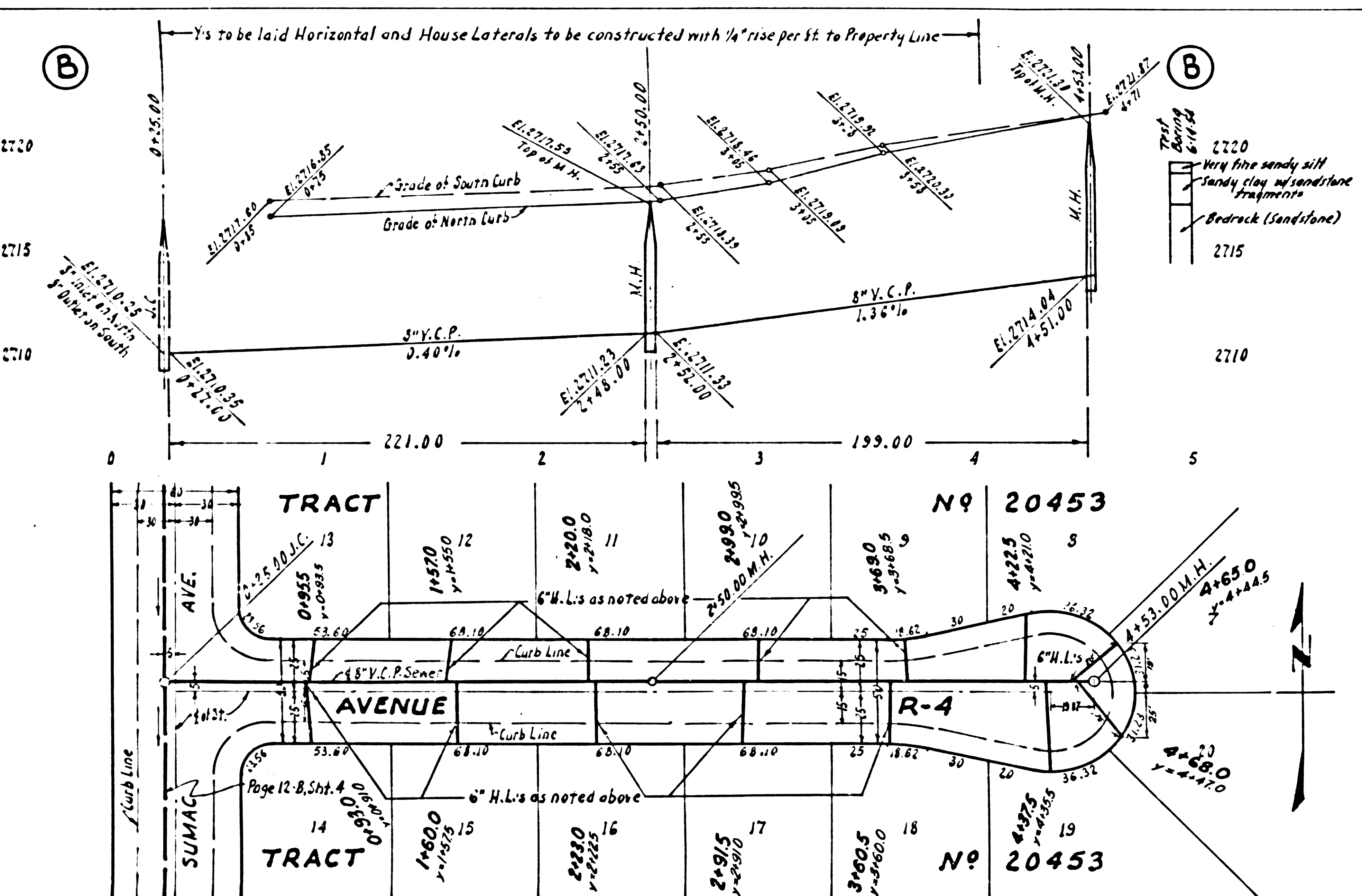
P.C. 3071  
PAGE 9  
2705  
20,462  
2700



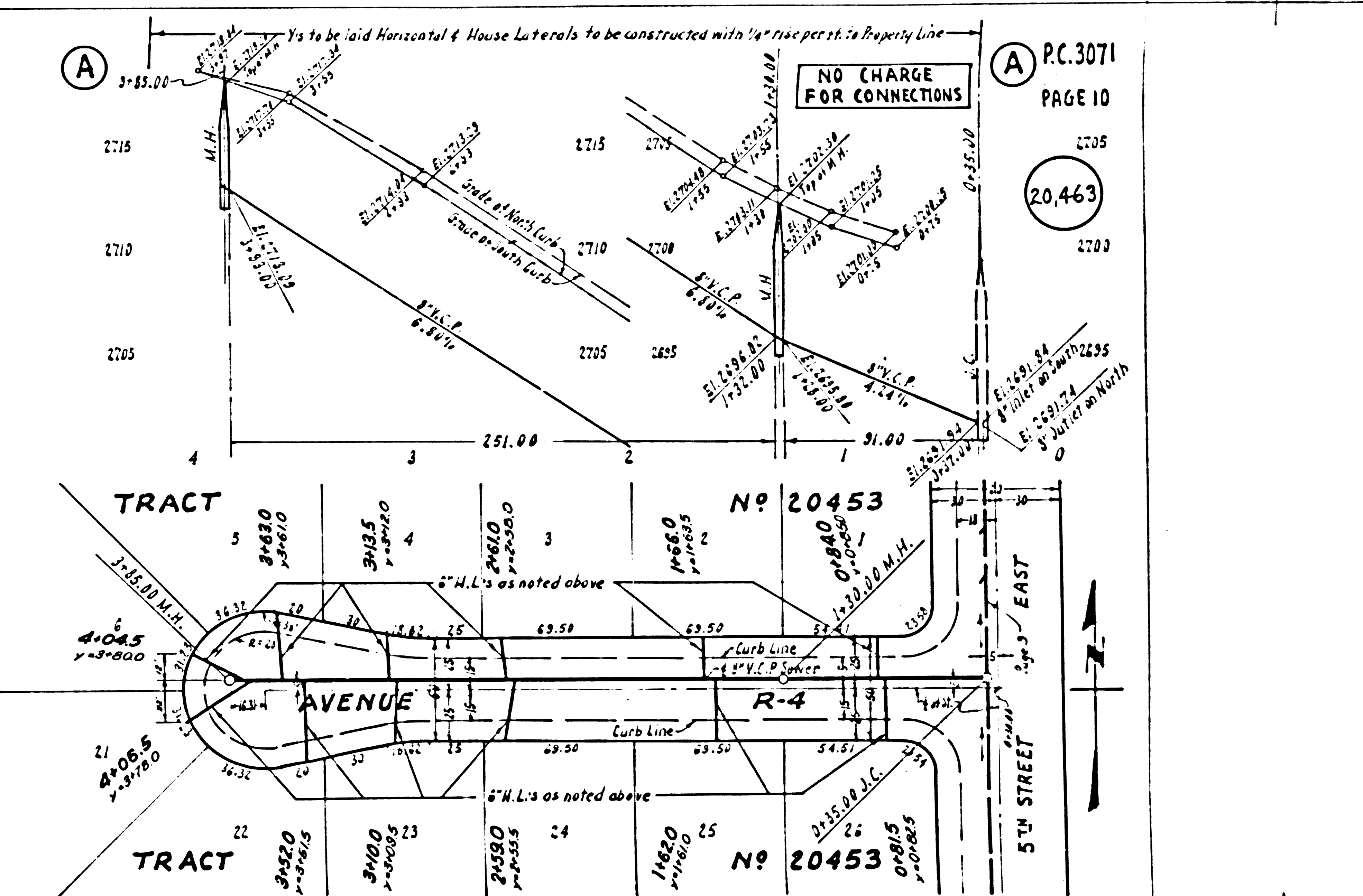
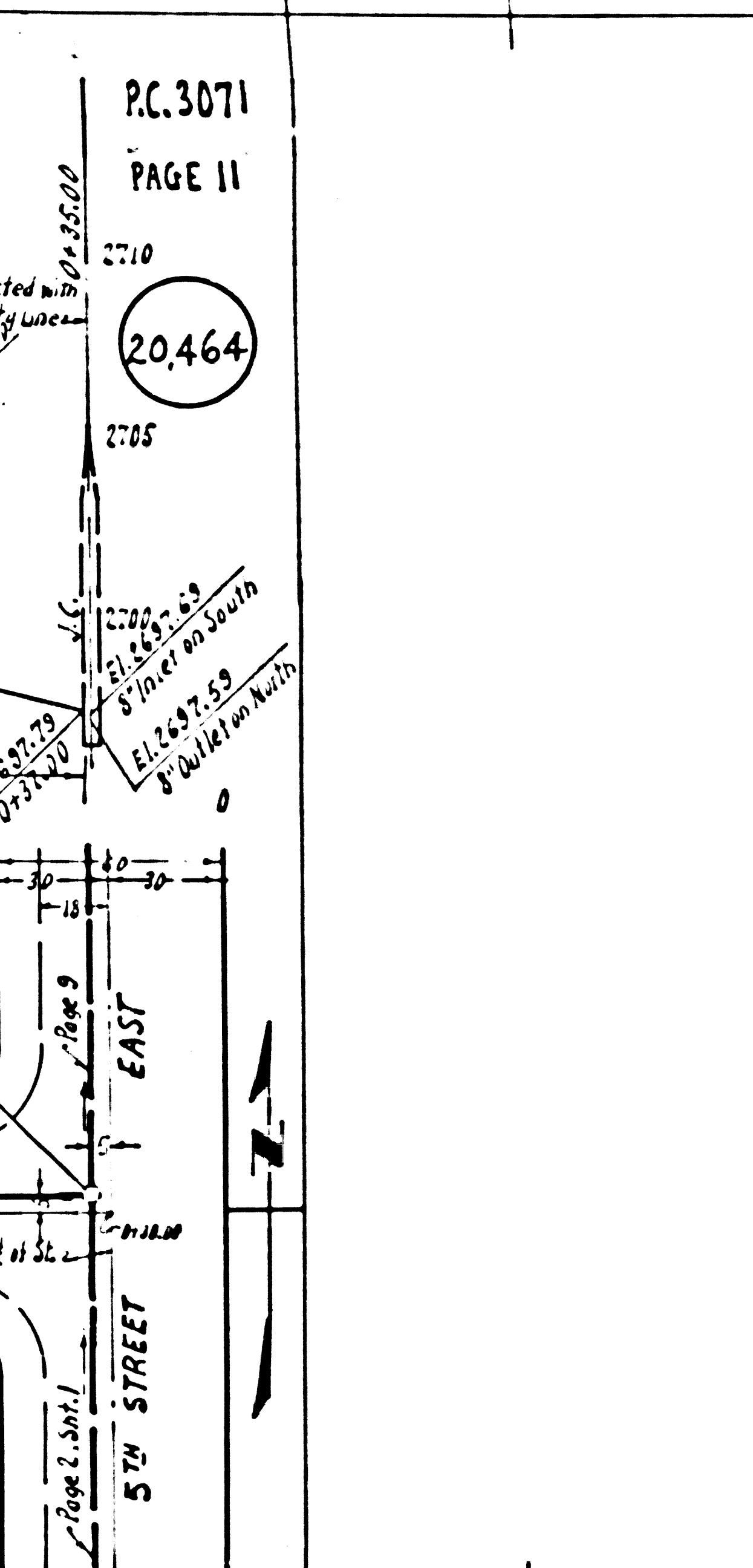
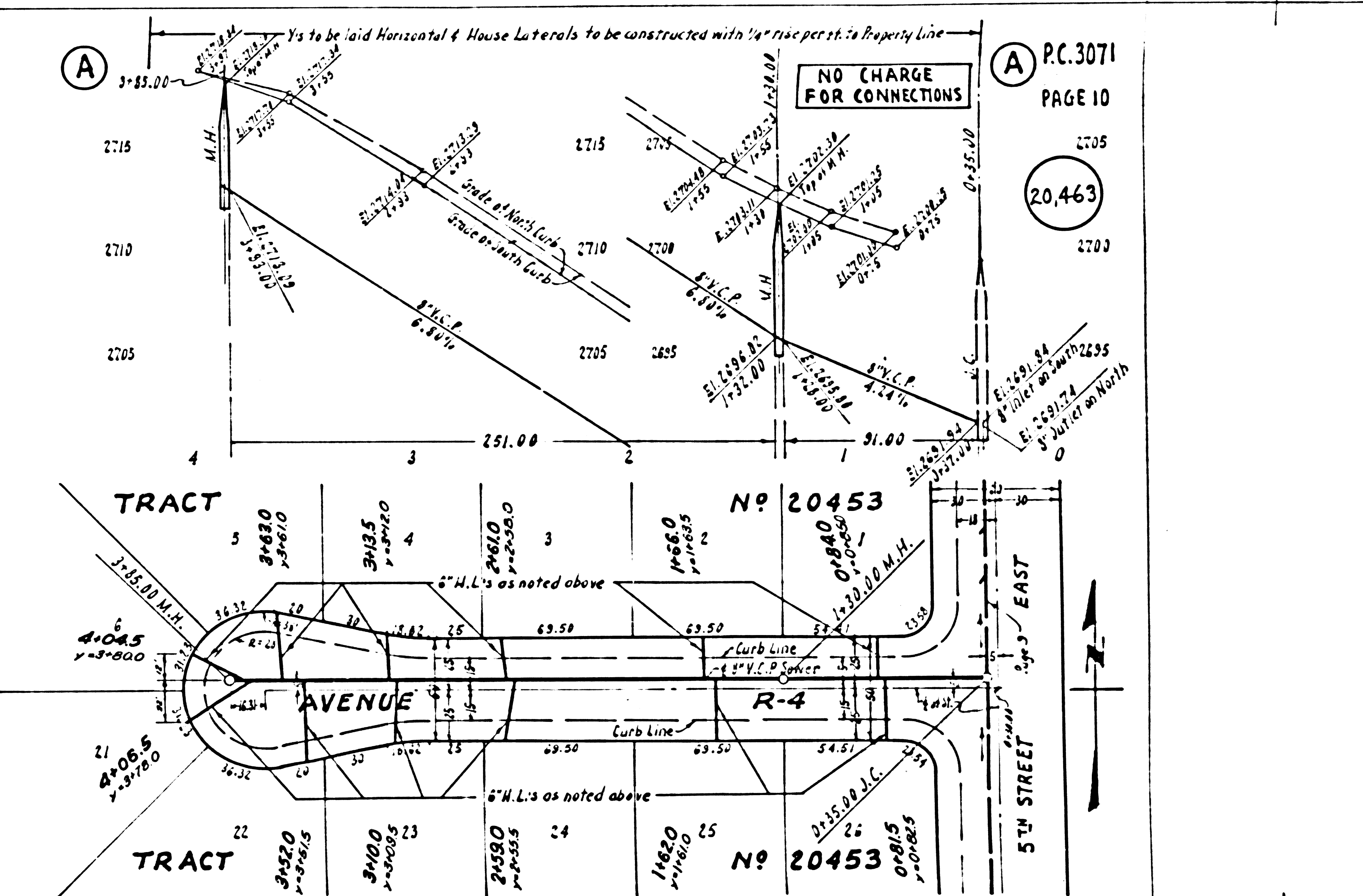
5TH STREET EAST  
Page 8, Sht. 2  
Page 11, Sht. 1

2/20

20,464



20,463

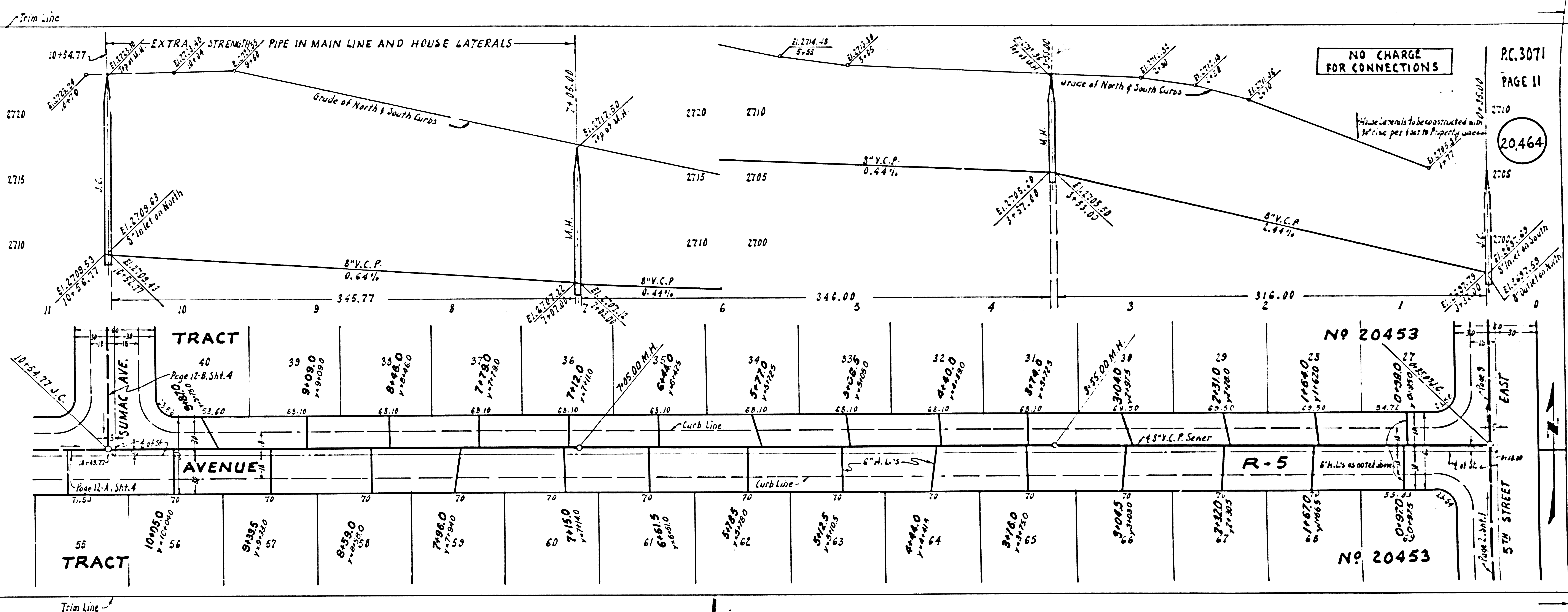


2720  
 2715  
 2710  
 2705  
 2710  
 2715  
 2720

2705  
 2700  
 2705  
 2710  
 2715  
 2720

P.C. 3071

TRACT NO. 20453



NO CHARGE FOR CONNECTIONS

P.C. 3071  
PAGE 11

20464

TRACT  
40  
Page 12-B, Sht. 4  
0.8%

SUNAC AVE.  
10+54.77 I.C.  
10+54.77 I.C.  
10+54.77 I.C.  
10+54.77 I.C.

TRACT  
55  
10+05.00  
56  
8+38.5  
57  
8+39.0  
58  
7+96.0  
59  
7+15.0  
60  
6+61.5  
61  
5+25  
62  
5+25  
63  
4+40  
64  
3+70  
65  
3+04.5  
66  
2+32.0  
67  
1+67.0  
68

Nº 20453

R-5

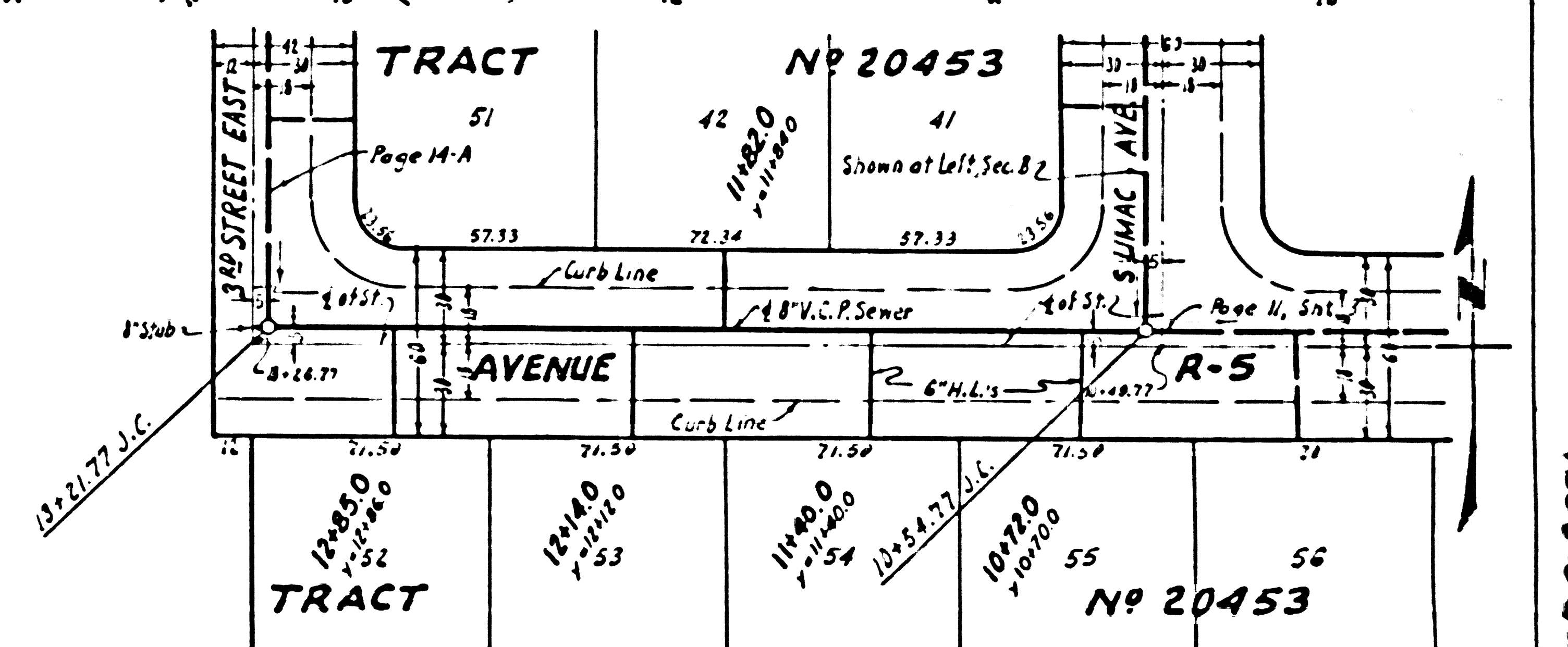
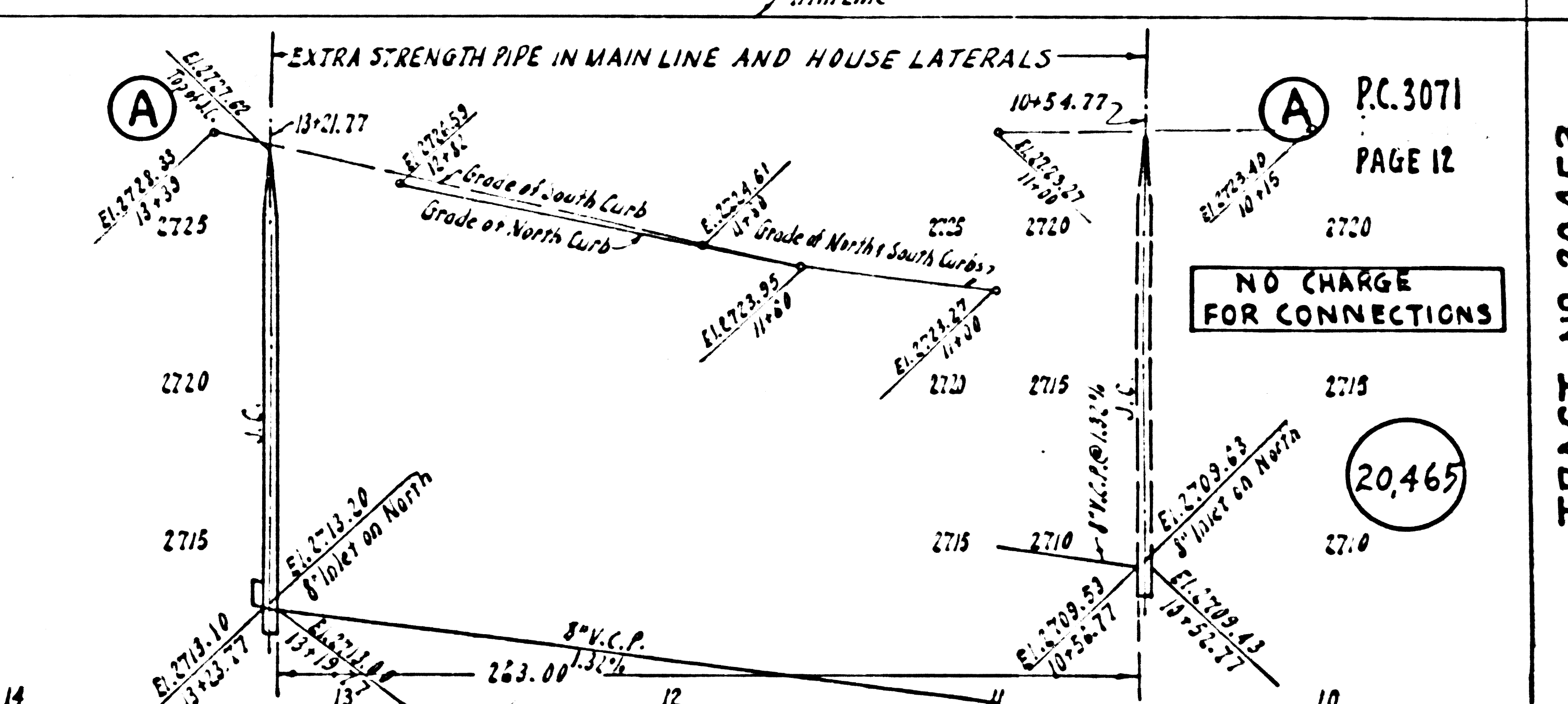
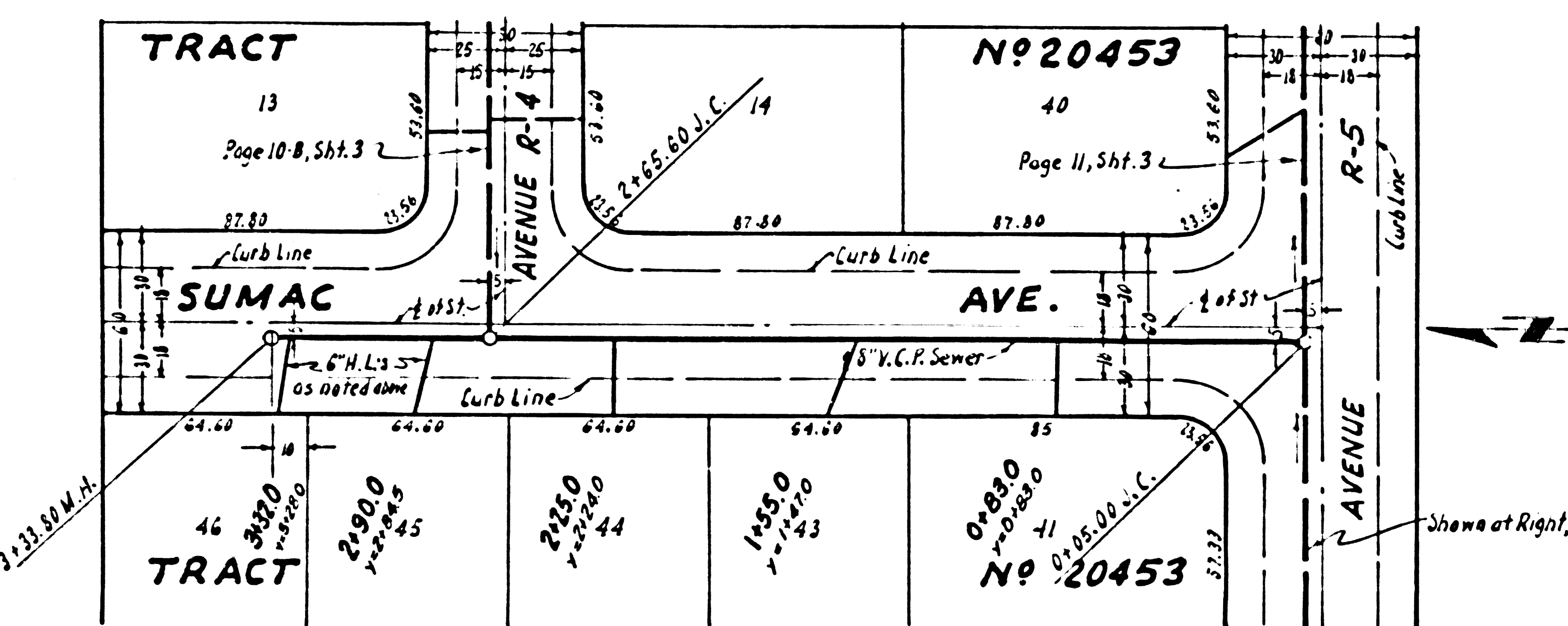
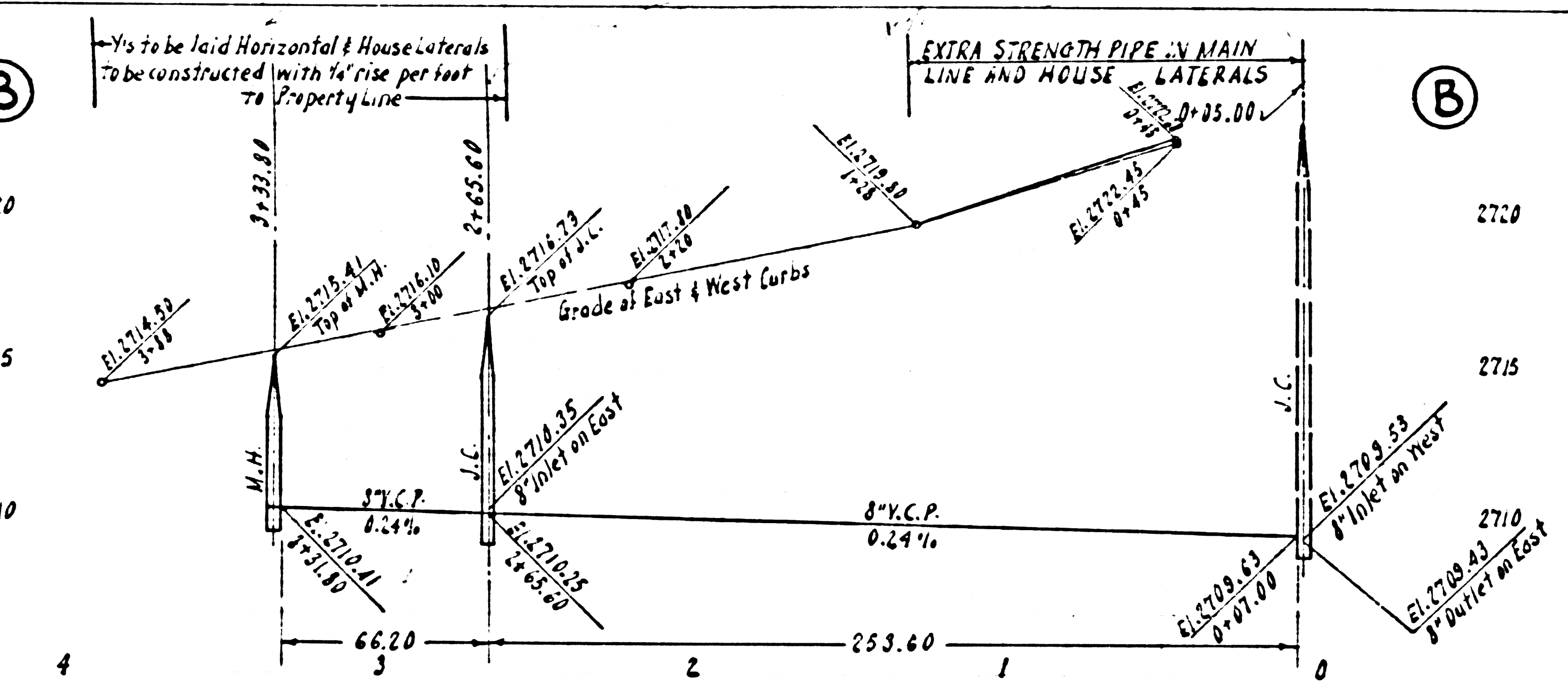
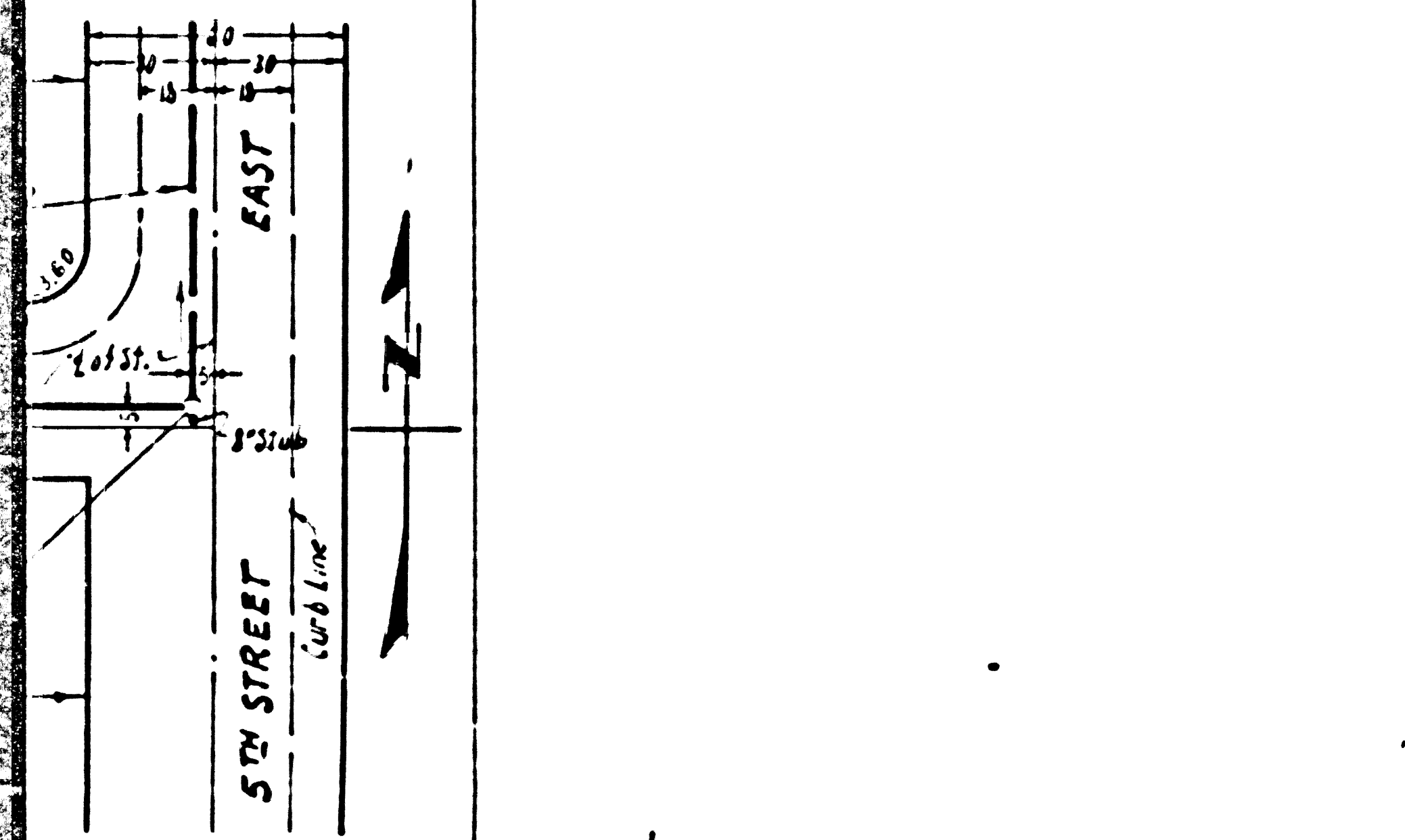
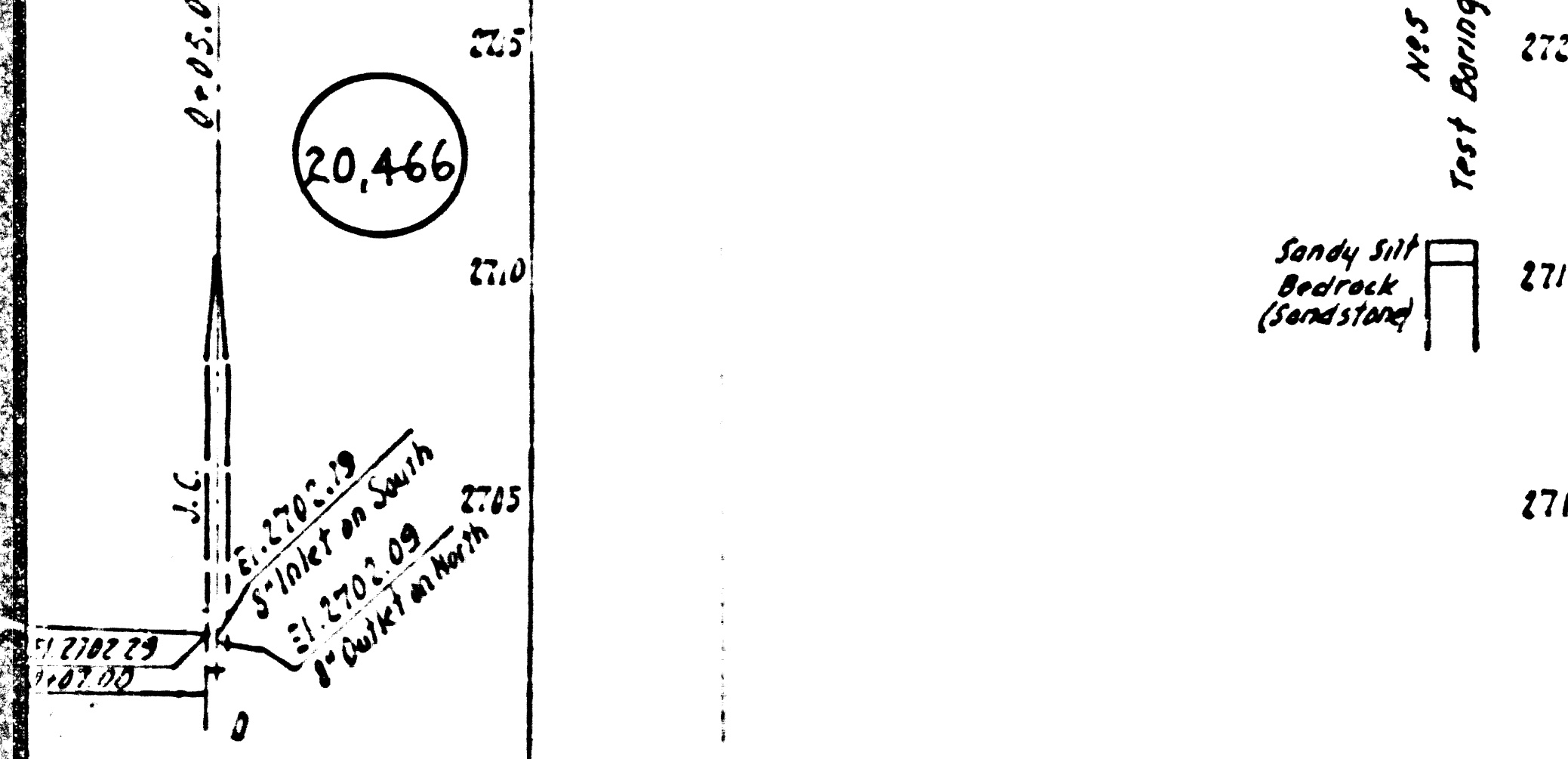
Nº 20453

EAST  
5TH STREET

ARGES  
TED

P.C.3071  
PAGE 13

20,466



P.C.3071  
PAGE 12

NO CHARGE  
FOR CONNECTIONS

20,465

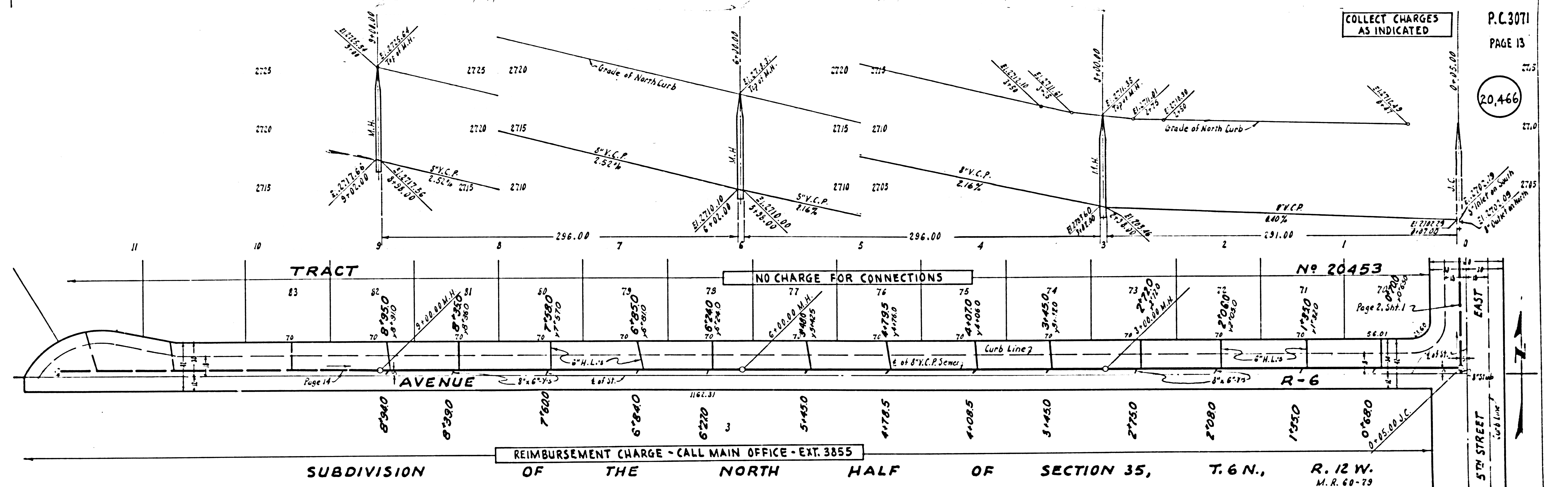
TRACT - No. 20453

Trim Line

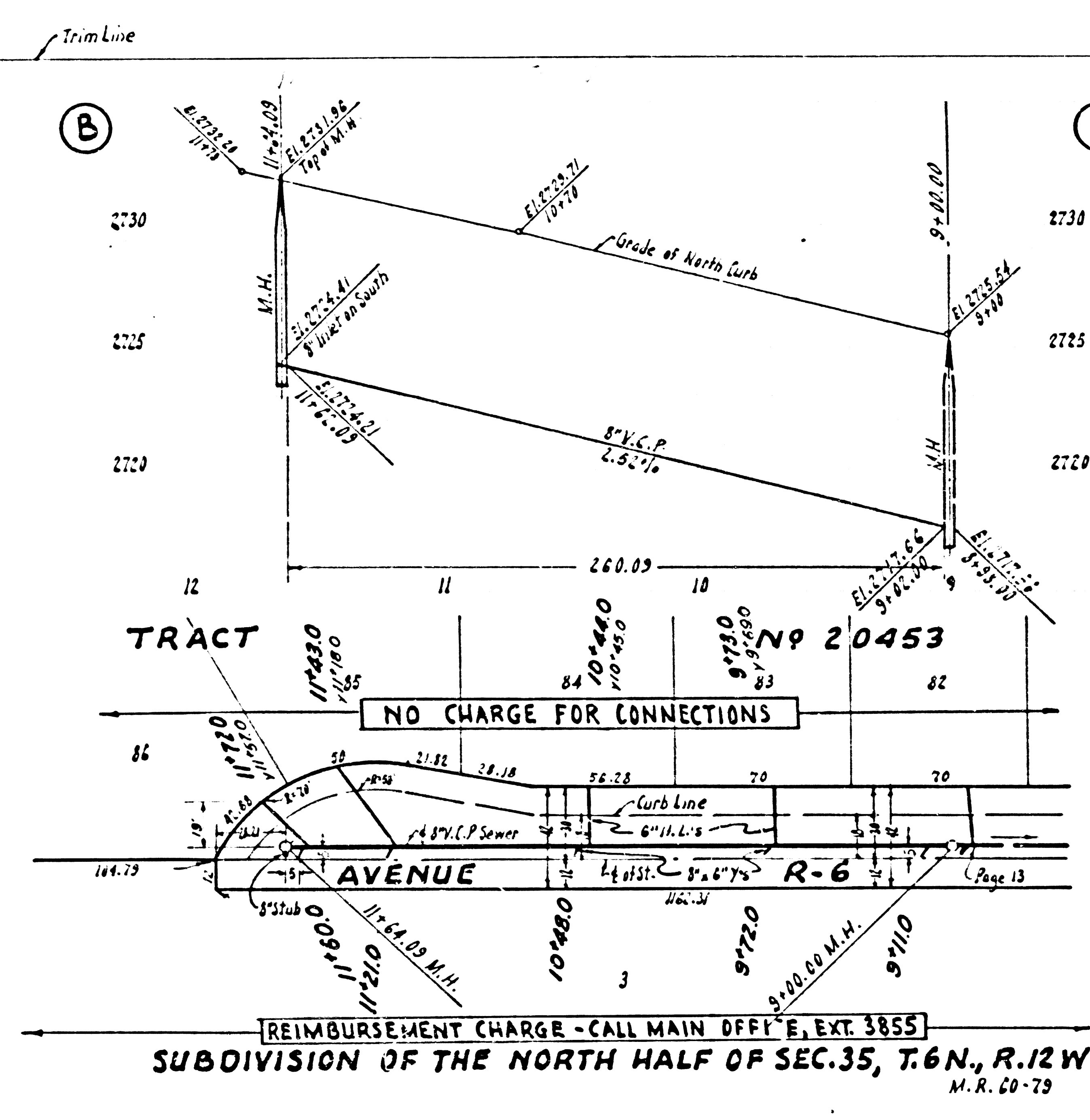
20,467

COLLECT CHARGES  
AS INDICATED

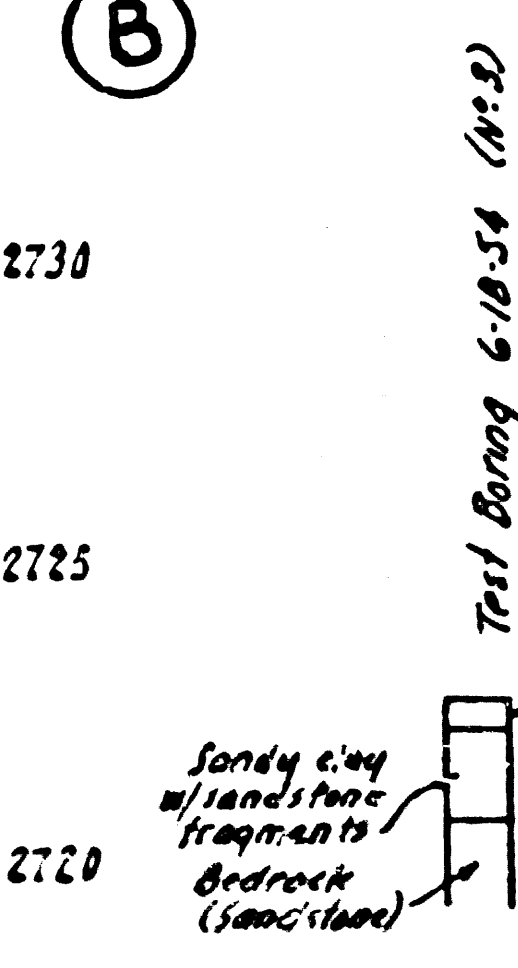
20,466



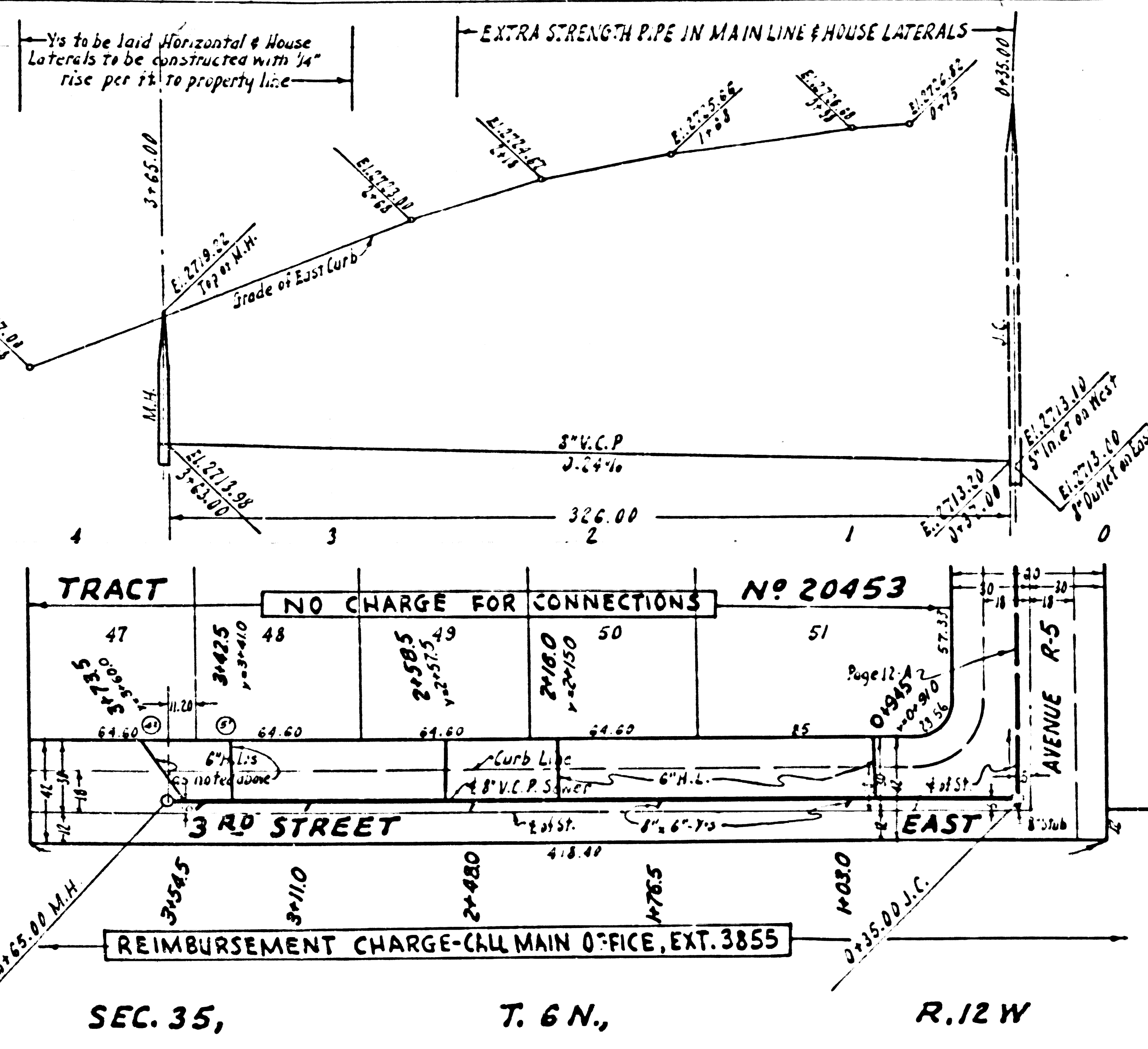
P.C.3071



(B)



(A)



(A)

COLLECT CHARGES AS INDICATED

P.C.3071 PAGE 14

20,467