

3076  
053251  
e 2  
18,963

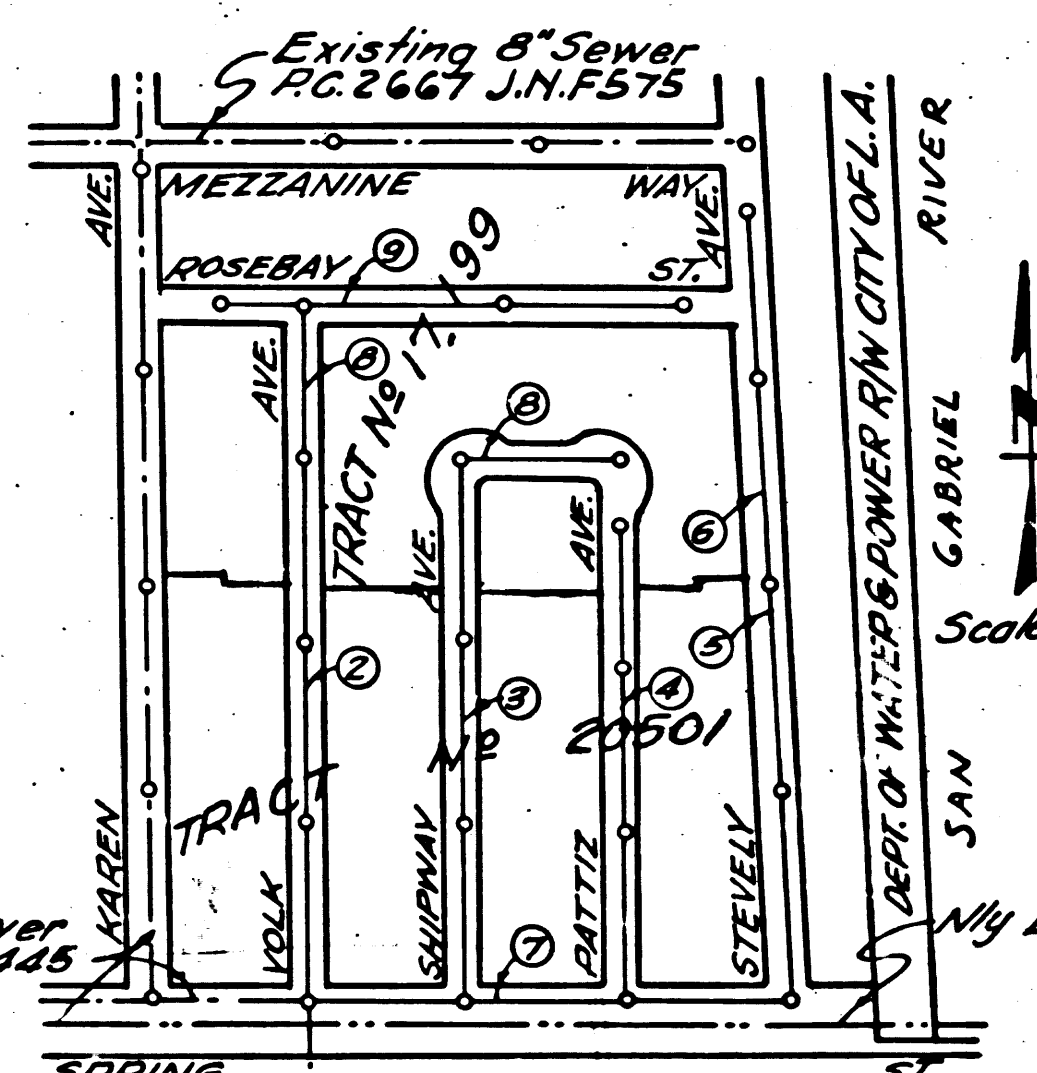
B.M. 34142 E. 130.815  
W. Side Studebaker Rd. 1/4 Mile N. of Spring St.  
L. & N. in N. Curb of N. Drive to House # 3461

- Note:
- H.L.'s constructed on P.C. 2881 for lots 1-12 Tract No 20501
  - H.L.'s constructed on P.C. 2881 for Lots 29, 57-63 & on P.C. 2667 for Lots 13-28 Tract No 17199

SHEET	PAGE
1	1-4
2	5-9

**BELLFLOWER BLDG. DIST. N°4**

- NOTE:  
Provide stakes on the property lines or property lines produced at right angles to the sewer line at the center line of each manhole.  
No representative of the County Engineer will survey or layout any portion of the work. The owner or his authorized representative shall furnish the County Engineer with grade sheets and stations for all house laterals and Y branches and shall provide stakes for them at their proper locations with stationing plainly marked. Any change in location shall be requested in writing by the owner or his representative.  
No revisions shall be made in these plans without the approval of the County Engineer.
- Use standard manhole frames and covers, S-a-117.
  - Use standard strength pipe except as noted.
  - Use cement mortar for all vitrified clay pipe joints.
  - Resurface all trench within paved area to meet L.A. County Road Dept. or Calif. State Highway Dept. requirements in accordance with permit.
  - Encase four feet of sewer at points of interference with poles, S-a-119.
  - House laterals to be constructed with inverts at property line... 6 feet below curb grade.
  - All structures shall be brick sewer structures, S-a-104.
  - For allowable leakage test, use Formula No. 1, Specs., Sec. 51.



**NO CHARGE FOR CONNECTIONS**  
L. Curtis 7-20-54

**INDEX MAP**  
P.C. 3076  
J.N. 0992.51

Checked by  
*Wesley L. ...*  
7-23-54

PROFILE, ALIGNMENT AND GRADE OF  
**SANITARY SEWERS**  
TO BE CONSTRUCTED IN

**TRACT NO 17199, 20501**

**PRIVATE CONTRACT NO. 3076**  
W. S. 31

SHEET 1 OF 2 SHEETS  
Scale: VERT. 1"=4'  
HORIZ. 1"=40' JUNE 1954

PREPARED IN THE OFFICES OF  
**HARRY GILBERT**  
Reg. C. E. No. 1797  
FOR LEGEND SEE PLAN NO. S-a-64

NOTE:  
Grades to which this improvement is to be constructed are shown on plans and profiles. Grade points for top of curbs, center line of streets, or center line of alleys are shown by circles on profiles. At all points between designated points the grade shall be established so as to conform to a straight line drawn between said designated points. Elevations are in feet above U.S.G.S. datum or mean sea level.  
This drawing and the data hereon are hereby made a part of the specifications. Work shall be constructed according to specifications on file in the office of the County Engineer and shall be prosecuted only in the presence of the County Engineer.  
Before work can be started, the contractor must obtain a permit to excavate in County streets from the L.A. County Road Dept., 108 W. 2nd St. and make a deposit with the County Engineer, 733 L.A. County Engineering Building, sufficient to cover the cost of construction inspection and record plans.  
Approval of this plan by the County of Los Angeles does not constitute a representation as to the accuracy of the location of or the existence or non-existence of any underground utility, pipe, or structure within the limits of this project. This note applies to all sheets.  
If work is to be done in a State Highway, a permit must be obtained from the State of California, Division of Highways, 120 South Spring Street.

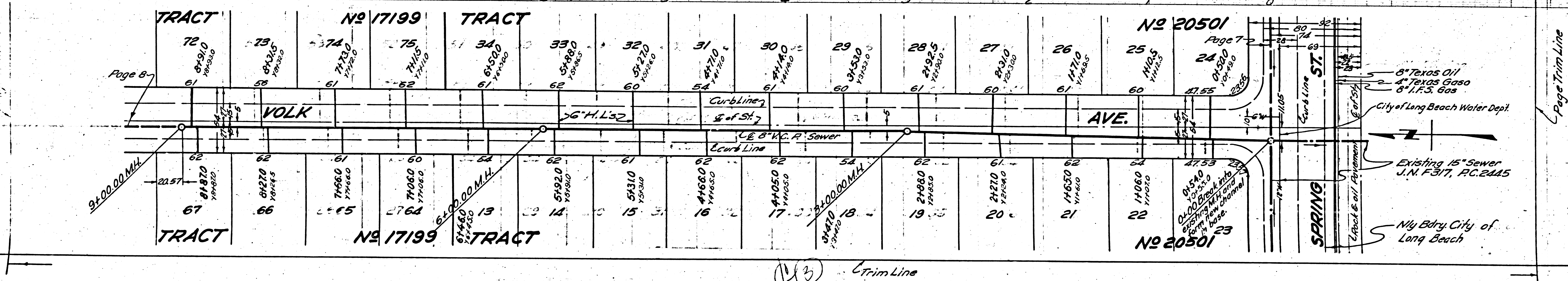
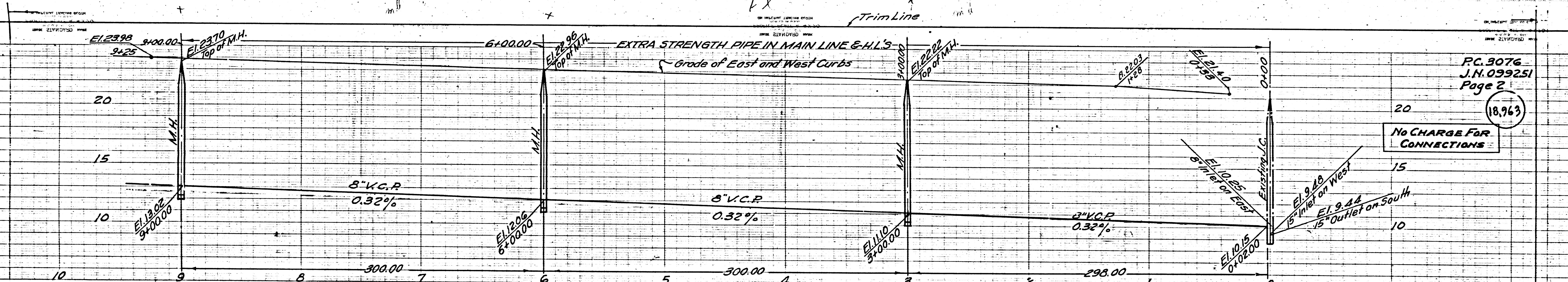
**COUNTY OF LOS ANGELES, CALIFORNIA**  
Approved, William J. Fox, County Engineer  
Approved, A. M. Rawn, CHIEF ENGR. CO. SAN. DIST. NO. 12  
Checked by *L. Curtis* 7-20-54  
Office of County Engineer, Reg. C. E. No. 2860.

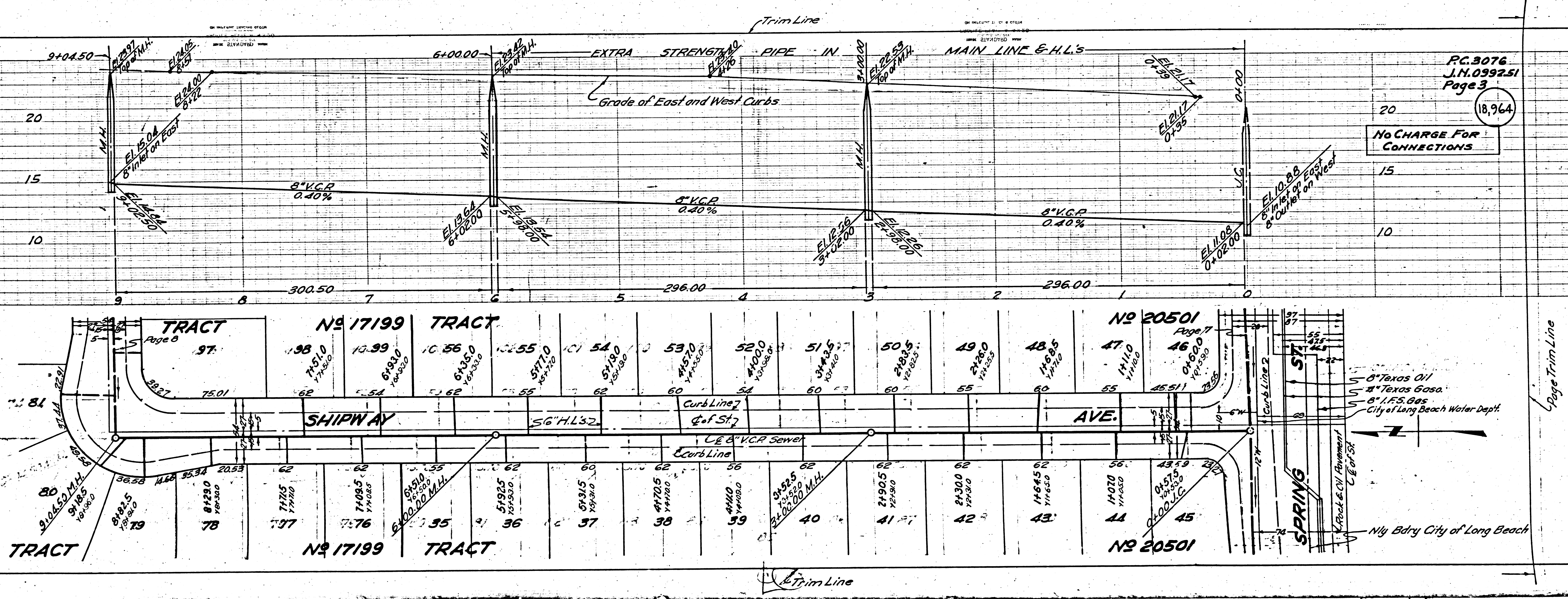
P.C. 3076  
J.N. 0992.51  
Page 1

18,962

(9)

RL





PC. 3076  
J.N. 0592.51  
Page 3

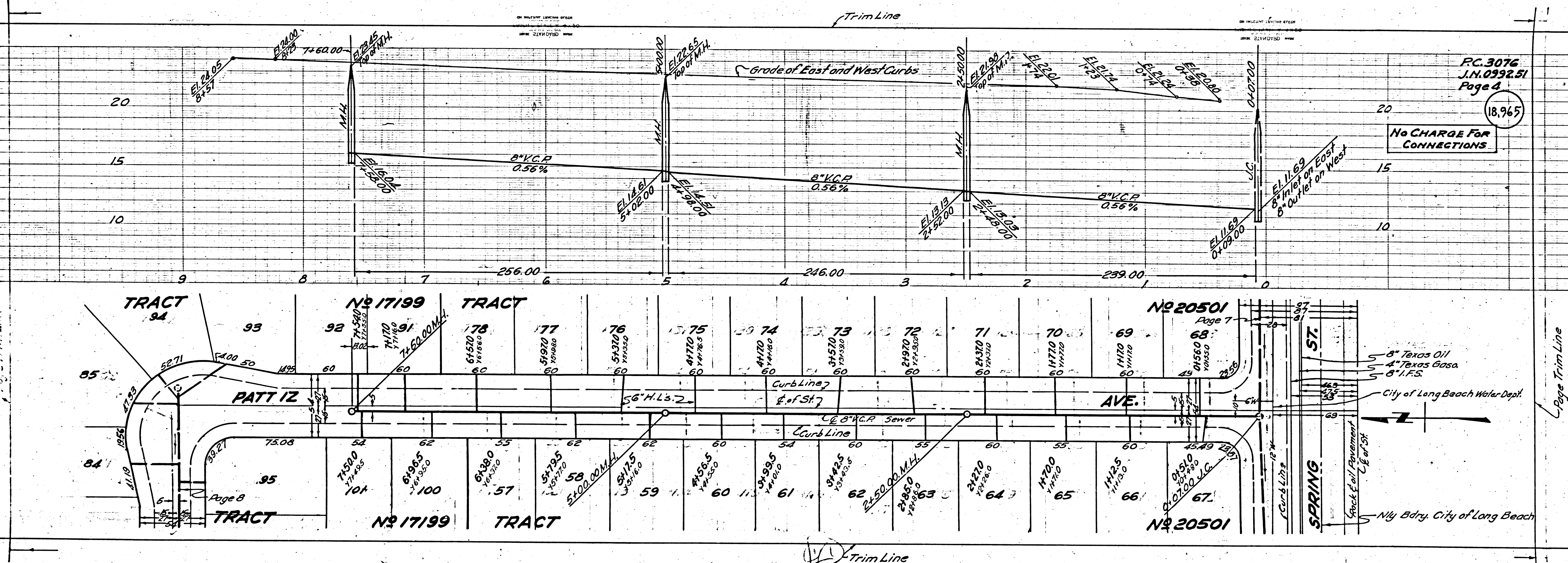
18,964

No CHARGE FOR CONNECTIONS

5" Texas Oil  
5" Texas Gas  
5" I.F.S. Gas  
City of Long Beach Water Dept.

City of Long Beach

PC 3076



PC 3076  
J.H. 0292.51  
Page 4

18.965

No CHARGE For CONNECTIONS

5" 8" Texas Oil  
5" 4" Texas Gas  
5" 8" I.F.S.

City of Long Beach Water Dept.

City of Long Beach

Page Trim Line

Page Trim Line

Trim Line

Grade of East and West Curbs

8" V.C.P. 0.56%

8" V.C.P. 0.56%

8" V.C.P. 0.56%

8" V.C.P. 0.56%

20

15

10

20

15

10

9

8

7

6

5

4

3

2

1

0

256.00

246.00

239.00

TRACT 94

TRACT No 17199

TRACT No 20501

PATT IZ

AVE.

ST.

SPRING

TRACT 95

TRACT No 17199

TRACT No 20501

84

85

93

98

91

178

177

176

175

74

73

72

71

70

69

68

67

66

65

64

63

62

61

60

85

84

93

98

91

178

177

176

175

74

73

72

71

70

69

68

67

66

65

64

63

62

61

60

85

84

93

98

91

178

177

176

175

74

73

72

71

70

69

68

67

66

65

64

63

62

61

60

85

84

93

98

91

178

177

176

175

74

73

72

71

70

69

68

67

66

65

64

63

62

61

60

85

84

93

98

91

178

177

176

175

74

73

72

71

70

69

68

67

66

65

64

63

62

61

60

85

84

93

98

91

178

177

176

175

74

73

72

71

70

69

68

67

66

65

64

63

62

61

60

85

84

93

98

91

178

177

176

175

74

73

72

71

70

69

68

67

66

65

64

63

62

61

60

85

84

93

98

91

178

177

176

175

74

73

72

71

70

69

68

67

66

65

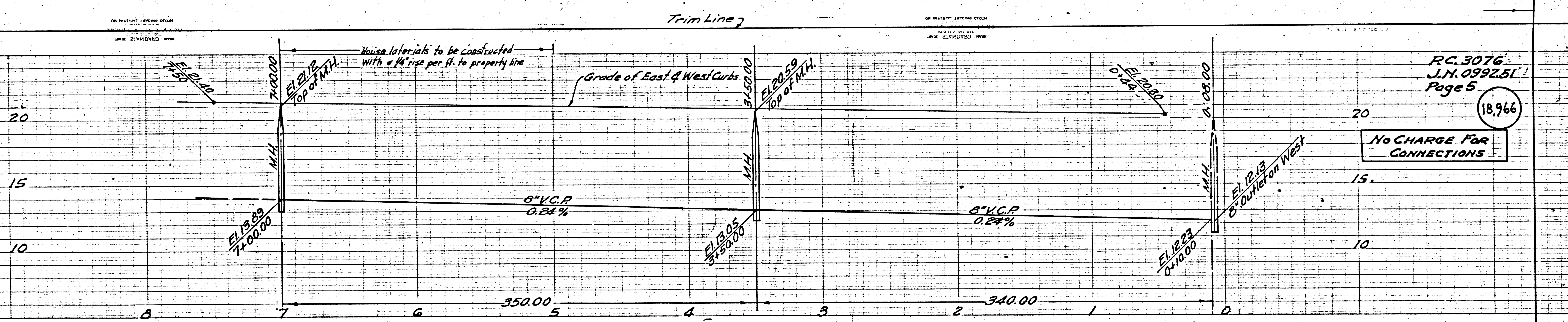
64

63

62

61

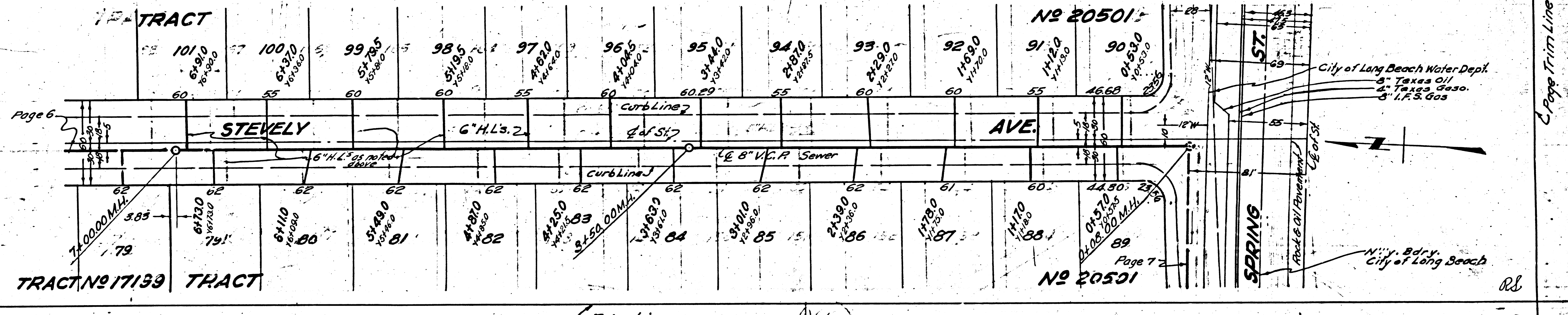
60



PC 3076  
J.N. 0992.51  
Page 5

18,966

No CHARGE FOR CONNECTIONS

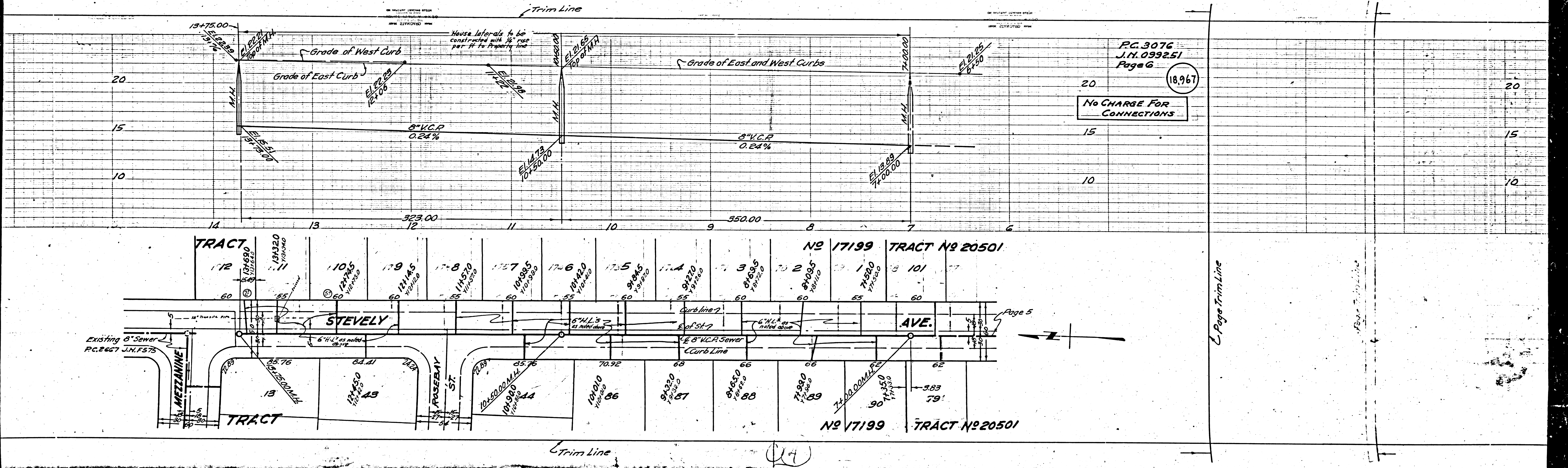


City of Long Beach Water Dept.  
3" Taxes Oil  
2" Taxes Gas  
3" I.P.S. Gas

City of Long Beach  
W.P. Dry

Page 7

RS

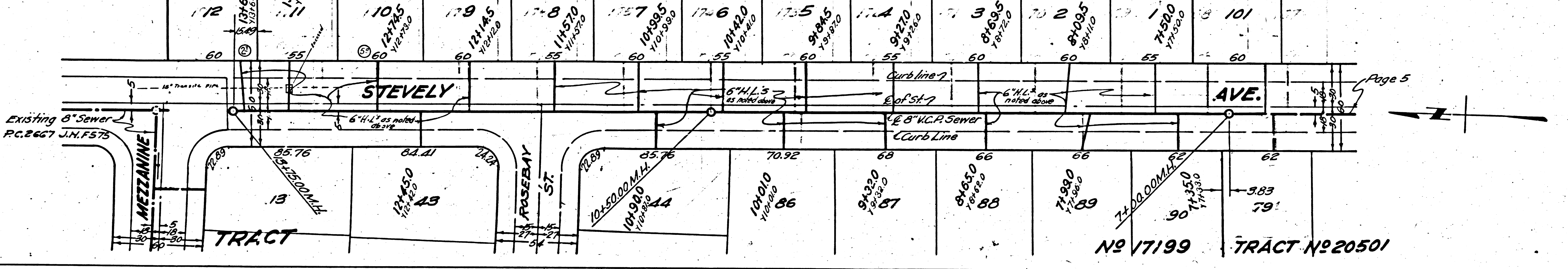


PC.3076  
J.N.0992.51  
Page 6

(18,967)

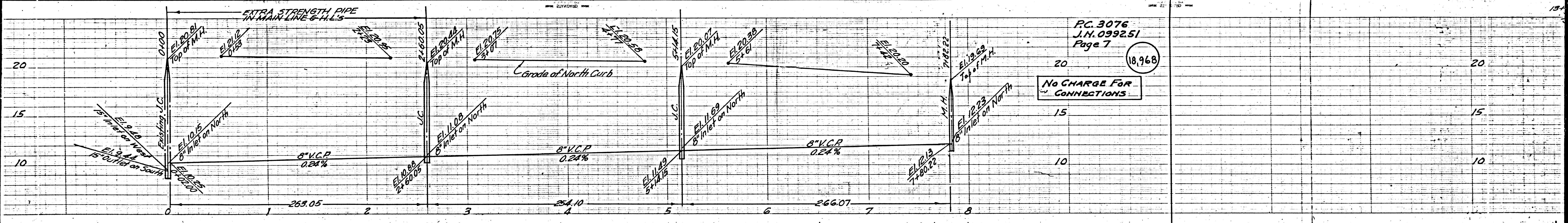
No CHARGE FOR CONNECTIONS

TRACT NO 17199 TRACT NO 20501



(14)

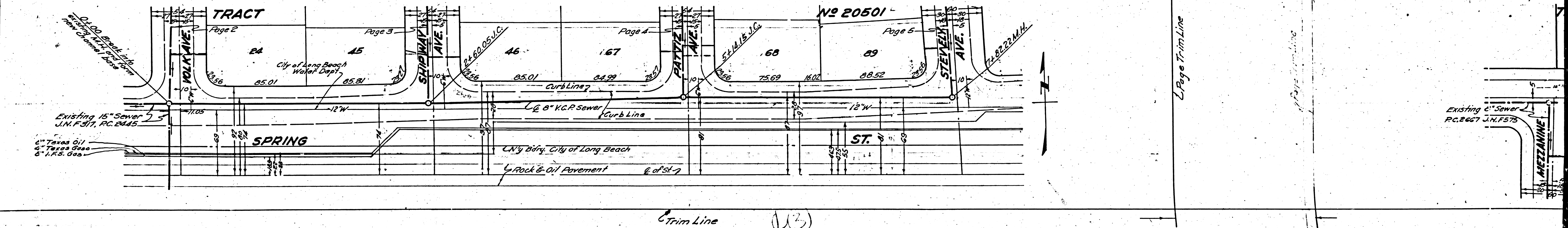
Trim Line



P.C. 3076  
J.M. 0992.51  
Page 7

(18,968)

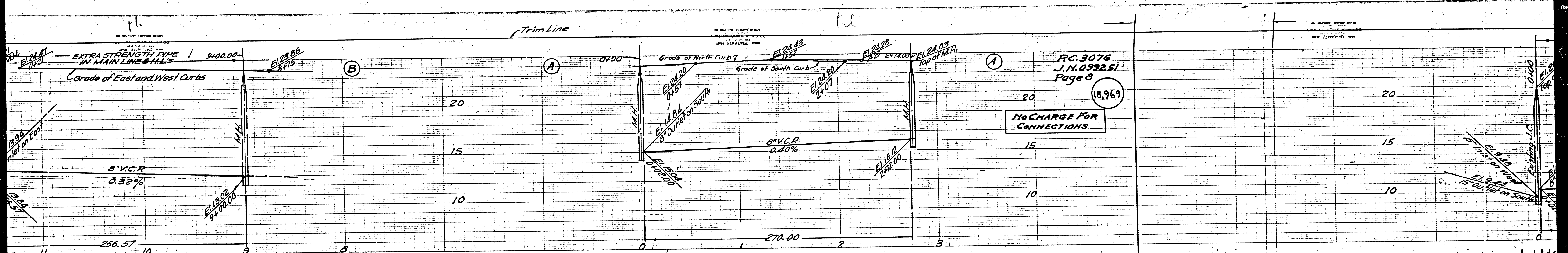
NO CHARGE FOR  
CONNECTIONS



Trim Line

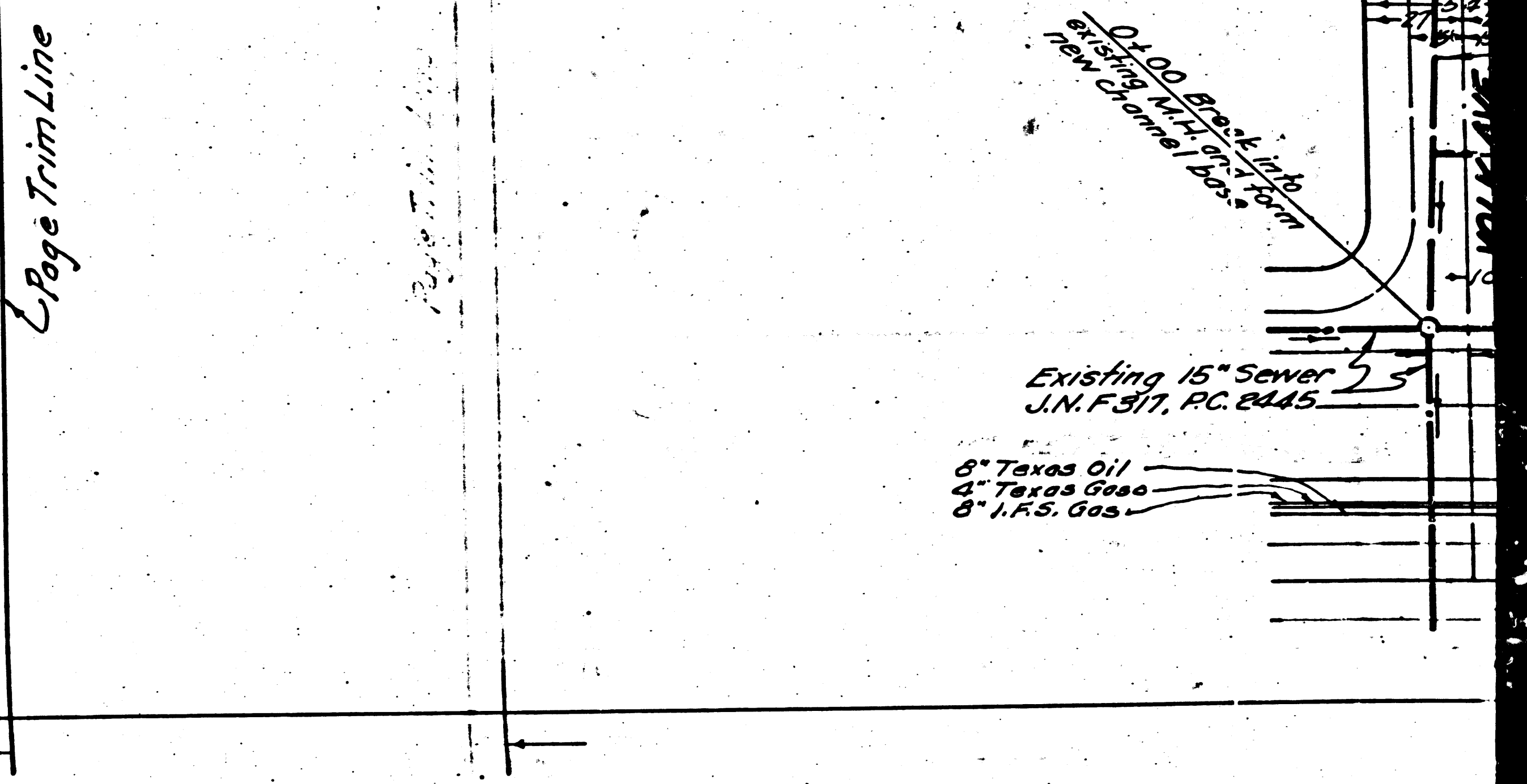
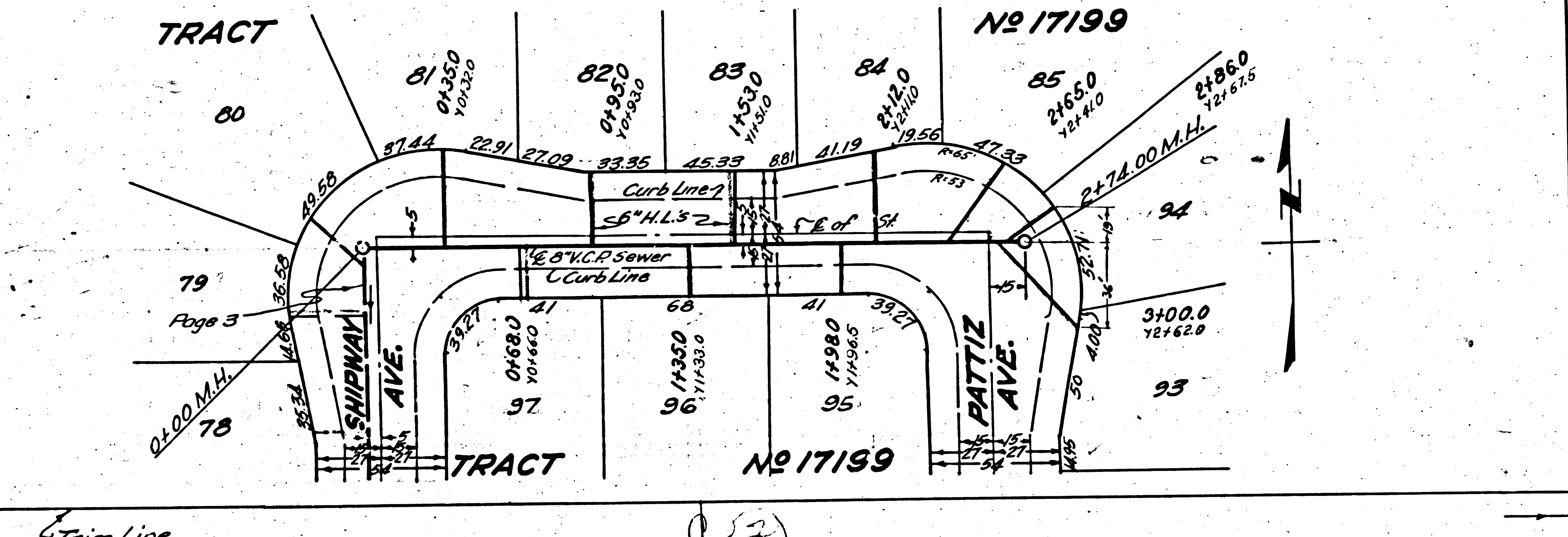
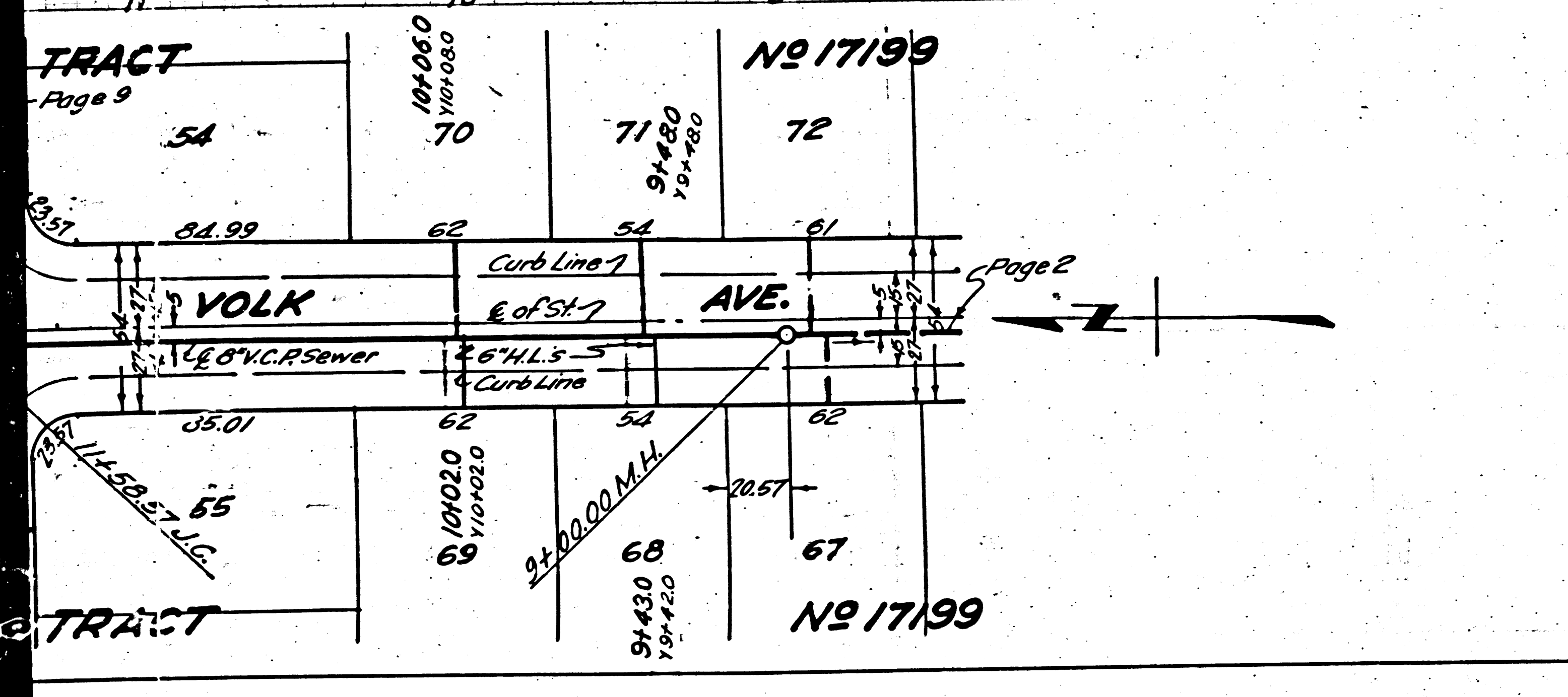
(18,968)

Existing 8\"/>

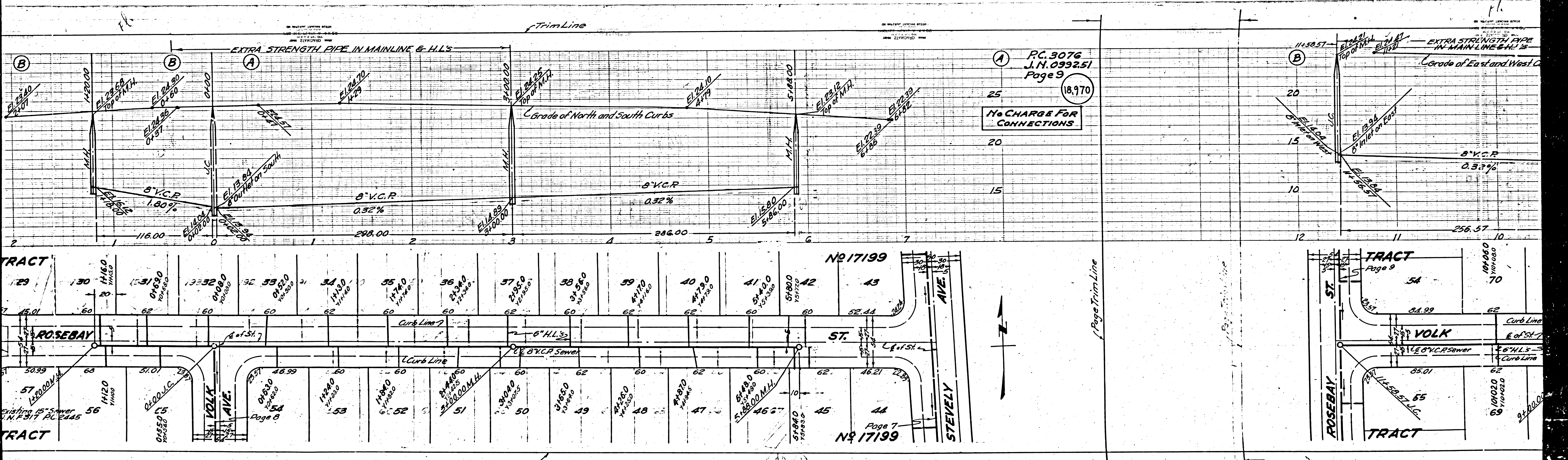


RC. 3076  
J.N. 039251  
Page 8

No CHARGE FOR CONNECTIONS







A  
 P.C. 3076  
 J.N. 0992.51  
 Page 9  
 18,970  
 No CHARGE For CONNECTIONS

No 17199  
 No 17199  
 Page 7

No 17199  
 Page 9  
 No 17199  
 Page 7