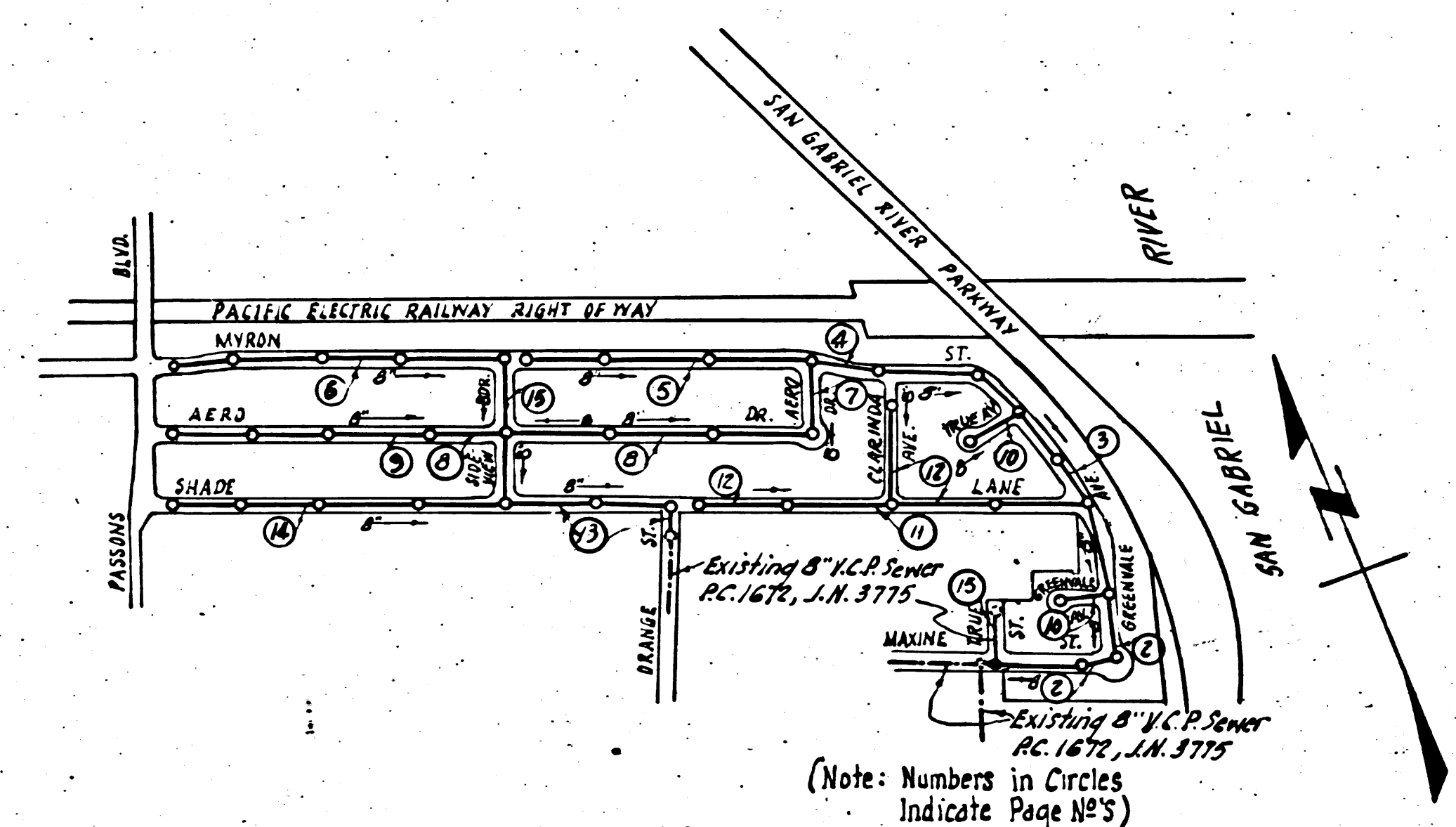


B.M. 511008. Elev. 118.30'
 L & T. 1" N. South edge Conc. Dr.
 to Hse. #8045, 564 West of
 Passens Blvd. just North of
 Shade Lane.



INDEX MAP
 Scale: 1"=600'
 TRACT NO. 16576
 P.C. 3079 J.N.0992.91

WHITTIER BLDG DIST. No. 61)

- NOTE:**
 Provide stakes on the property lines or property lines produced at right angles to the sewer line at the center line of each manhole.
 No representative of the County Engineer will survey or layout any portion of the work.
 The owner or his authorized representative shall furnish the County Engineer with grade sheets and stations for all house laterals and Y branches and shall provide stakes for them at their proper locations with stationing plainly marked. Any change in location shall be requested in writing by the owner or his representative.
 No revisions shall be made in these plans without the approval of the County Engineer.
1. Use standard manhole frames and covers, S-a-117, Except as noted
 2. Use standard strength pipe except as noted.
 3. Use cement mortar for all vitrified clay pipe joints.
 4. Resurface all trench within paved area to meet L.A. County Road Dept. or California State Highway Dept. requirements in accordance with permit.
 5. Encase four feet of sewer at points of interference with poles, S-a-119.
 6. Y's to be laid horizontal and house laterals to be constructed with 1/4" Rise Per Foot to the Property Line, except as noted.
 7. All structures shall be brick sewer structures, S-a-104, Except as noted.
 8. For allowable leakage test, use Formula No. _____ Spec's., Sec. 51.
 9. Manhole tops in unimproved Rights-Of-Way to be 6" above finish grade.

SHEET	PAGE
1	1-4
2	5-8
3	9-12
4	13-15

COLLECT CHARGES AS INDICATED
R. K. Kuhn 7-30-54

Checked
Thomas R. Rogers
 7-29-54

PROFILE, ALIGNMENT AND GRADE OF
SANITARY SEWERS
 TO BE CONSTRUCTED IN
TRACT NO. 16576

PRIVATE CONTRACT NO. 3079
 W. S. 36
 4 SHEETS

Scale: VERT. 1"=4'
 HORIZ. 1"=40'
 JUNE 1954
 PREPARED IN THE OFFICES OF
LOVETT AND HART

Charles S. Remond
 Reg. C. E. No. 8805
 FOR LEGEND SEE PLAN NO. S-a-64

NOTE:
 Grades to which this improvement is to be constructed are shown on plans and profiles. Grade points for top of curbs, center line of streets, or center line of alleys are shown by circles on profiles. At all points between designated points the grade shall be established so as to conform to a straight line drawn between said designated points.
 Elevations are in feet above U.S.S.S. datum or mean sea level.
 This drawing and the data hereon are hereby made a part of the specifications.
 Work shall be constructed according to specifications on file in the office of the County Engineer and shall be prosecuted only in the presence of the County Engineer.
 Before work can be started, the contractor must obtain a permit to excavate in County streets from the L.A. County Road Dept., 108 W. 2nd St. and make a deposit with the County Engineer, 733 L.A. County Engineering Building, sufficient to cover the cost of construction inspection and record plans.
 Approval of this plan by the County of Los Angeles does not constitute a representation as to the accuracy of the location of or the existence or non-existence of any underground utility, pipe, or structure within the limits of this project. This note applies to all sheets.
 If work is to be done in a State Highway, a permit must be obtained from the State of California, Division of Highways, 120 South Spring Street.

COUNTY OF LOS ANGELES, CALIFORNIA
 Approved, William J. Fox, County Engineer
 Approved, A. M. Rawm
 CHIEF ENGR. CO. SAN DIST. NO. 2
A. P. Collins Sanitation Engineer
A. M. Rawm Office Engineer
 Checked By: *R. K. Kuhn* 7-30-54
 Office of County Engineer, Reg. C. E. No. 7860

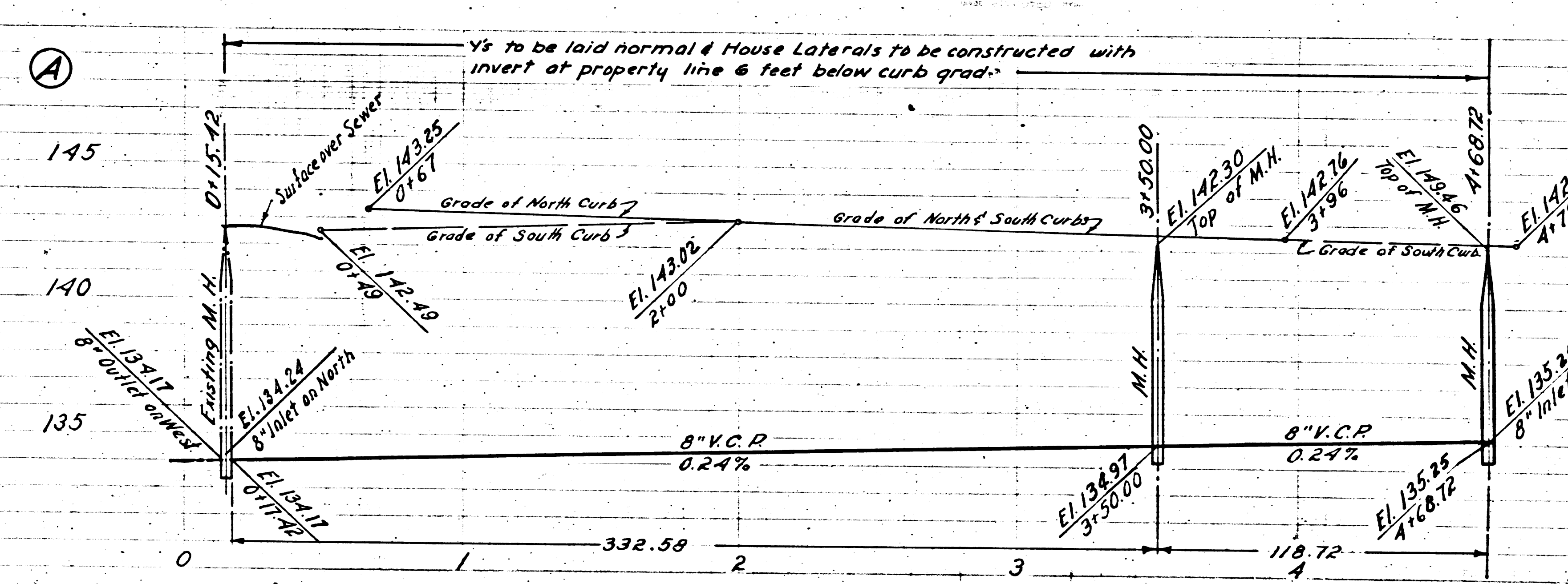
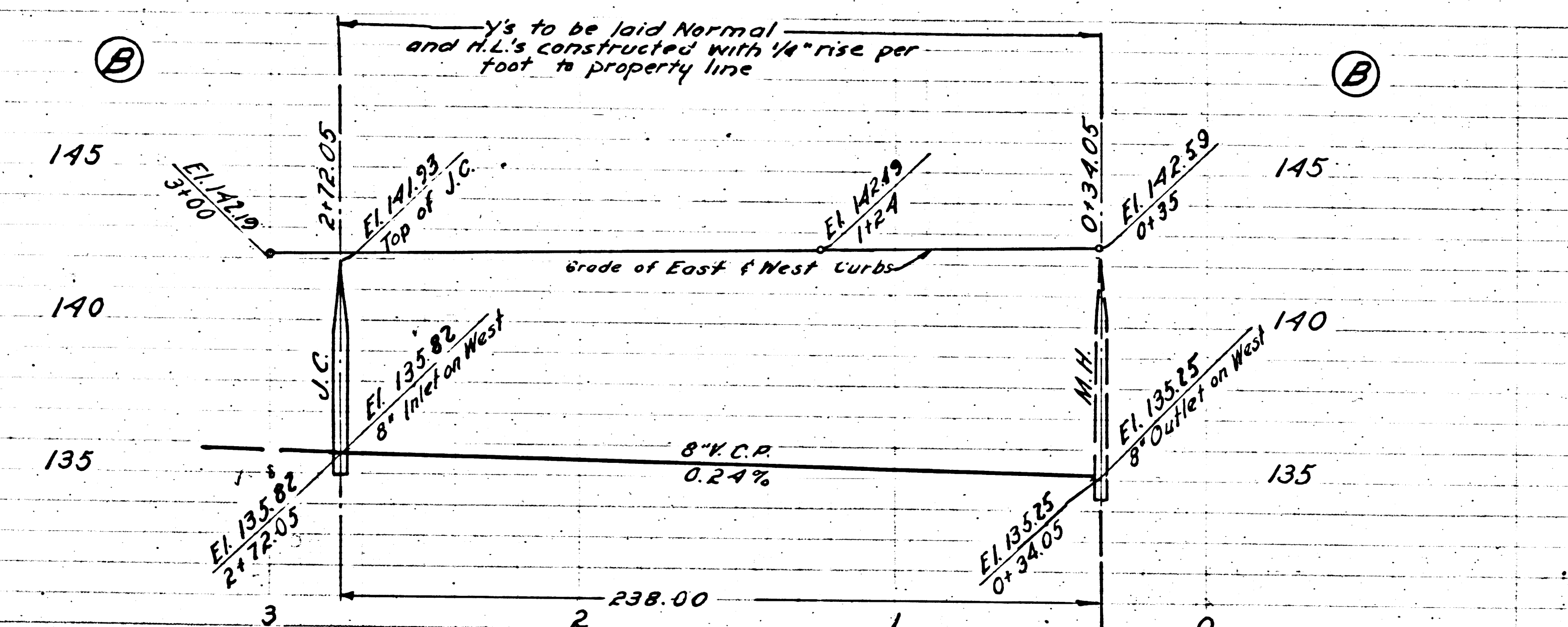
P.C. 3079
 J.N.0992.91
 PAGE 1

18972

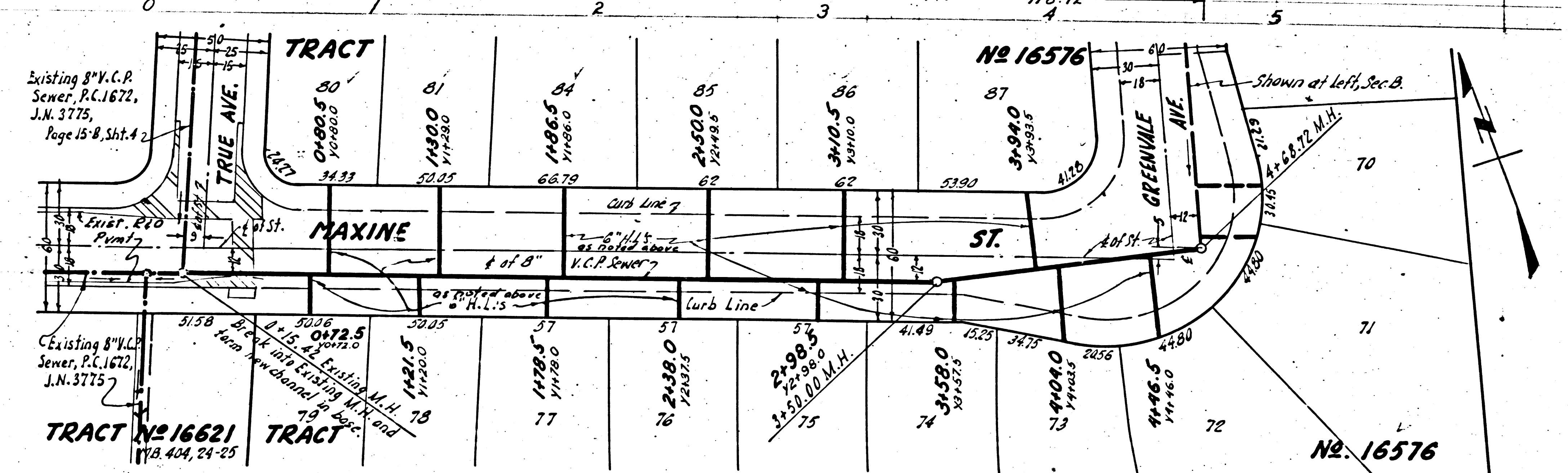
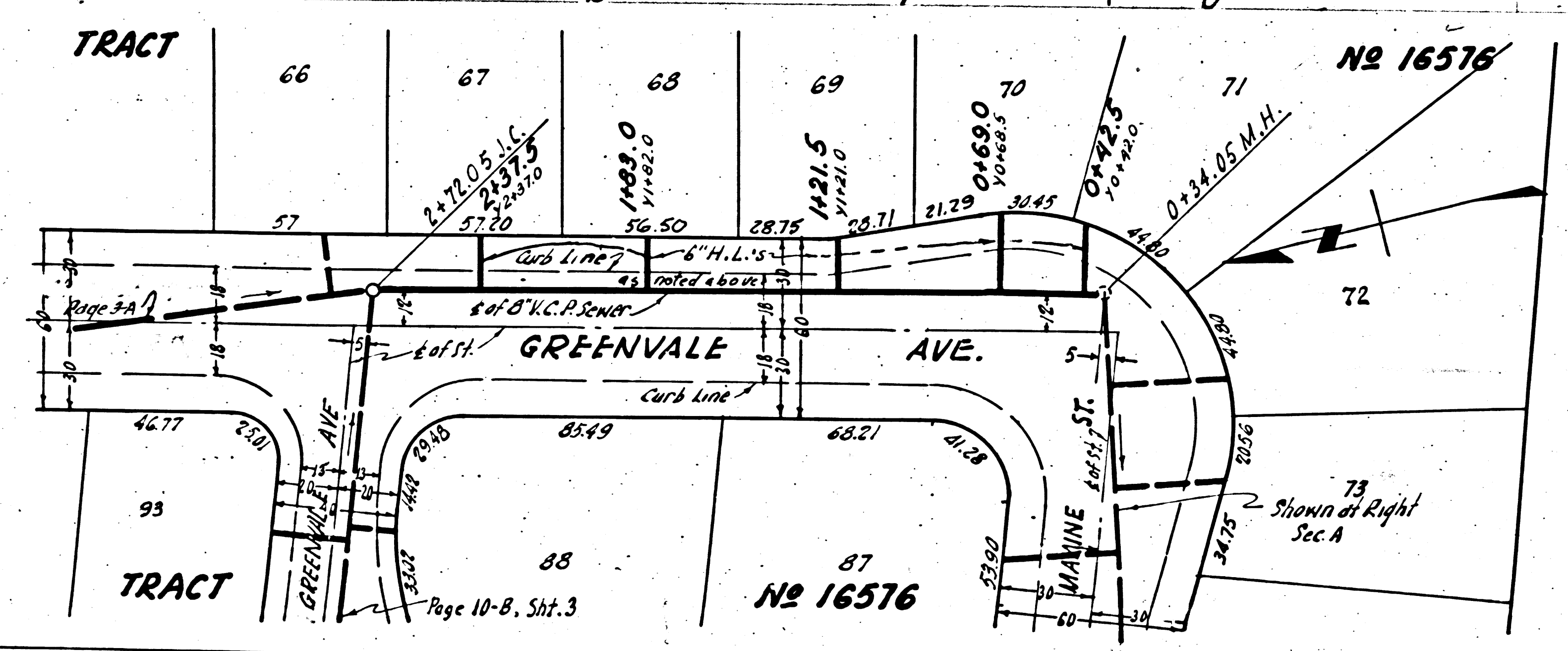
(5)

TRACT NO. 16576
 P.C. 3079
 J.N.0992.91
 PAGE 1

Trim Line



PC. 3079
J.N. 0992.91
Page 2
(8,973)
NO CHARGE FOR CONNECTIONS

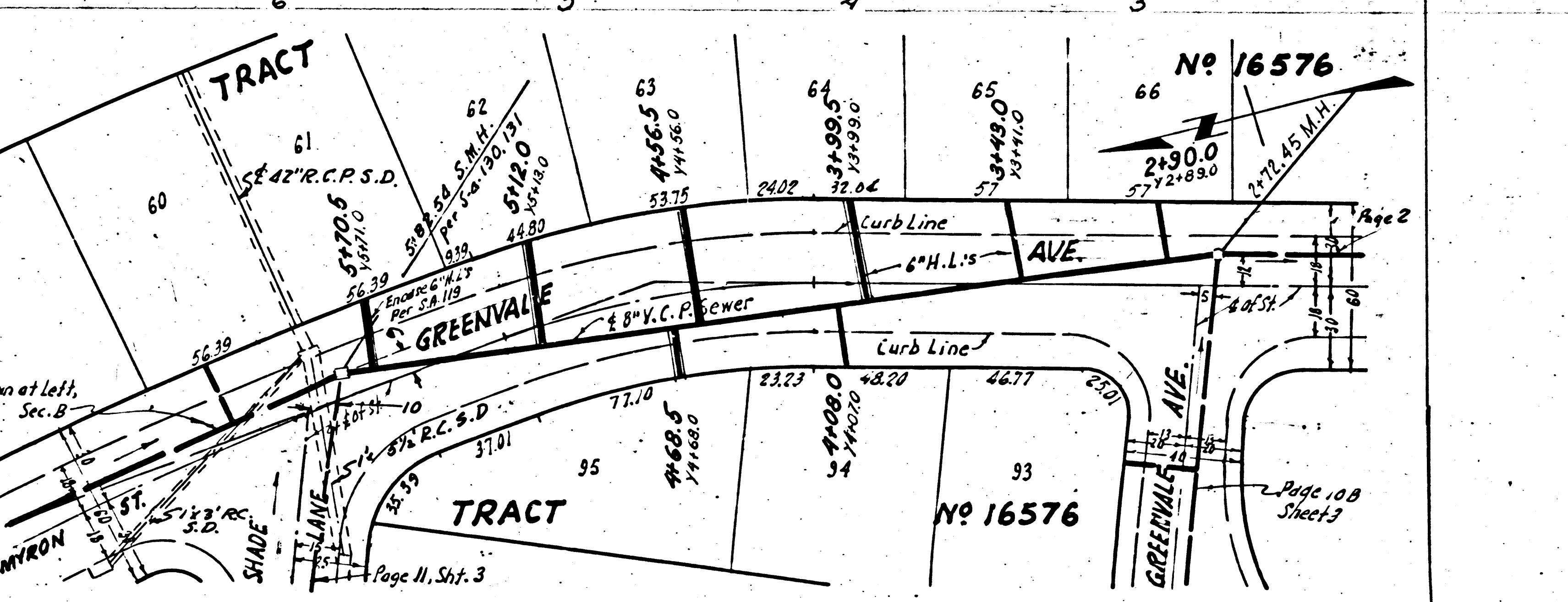
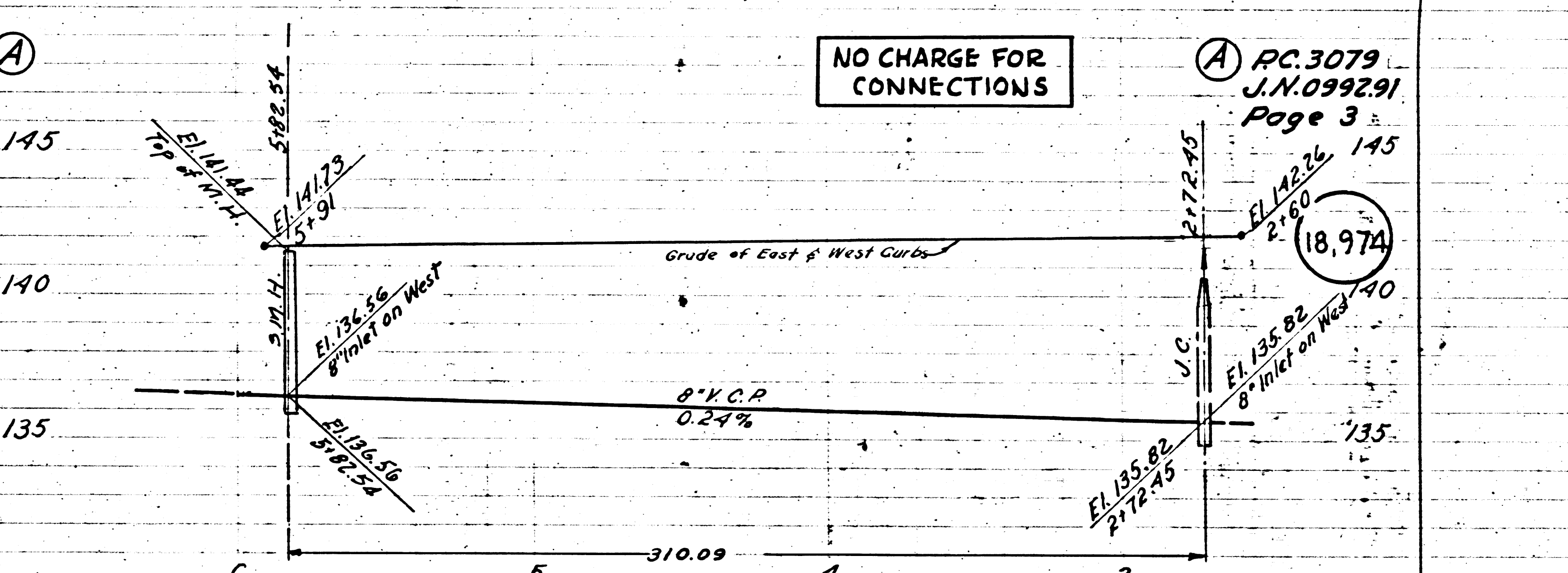
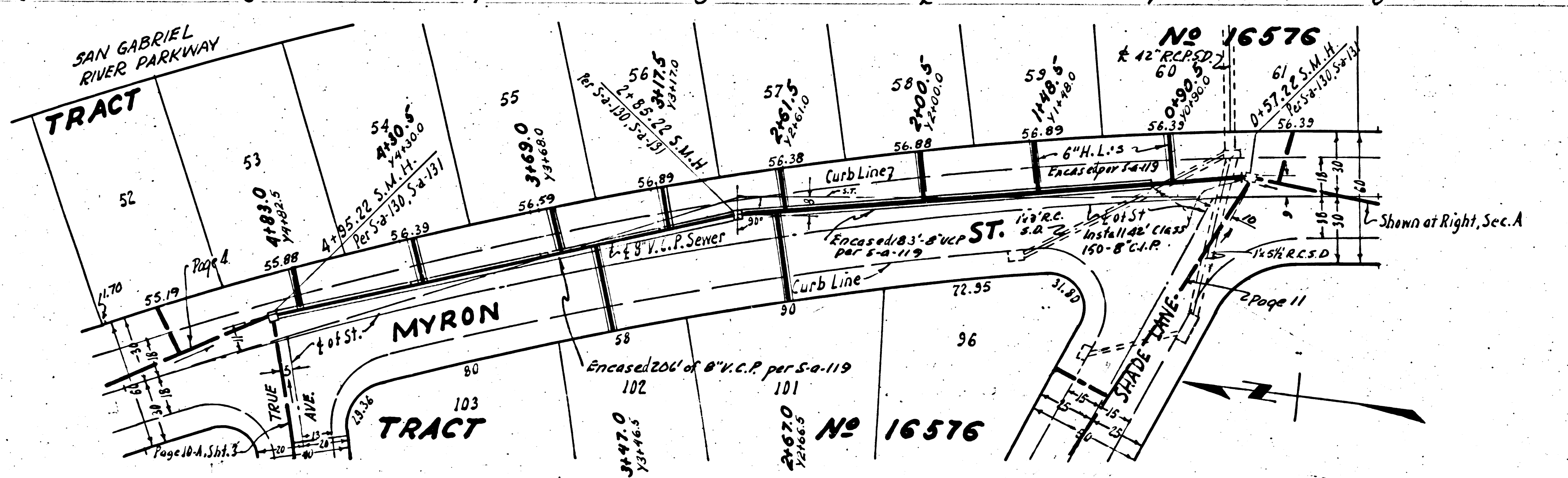
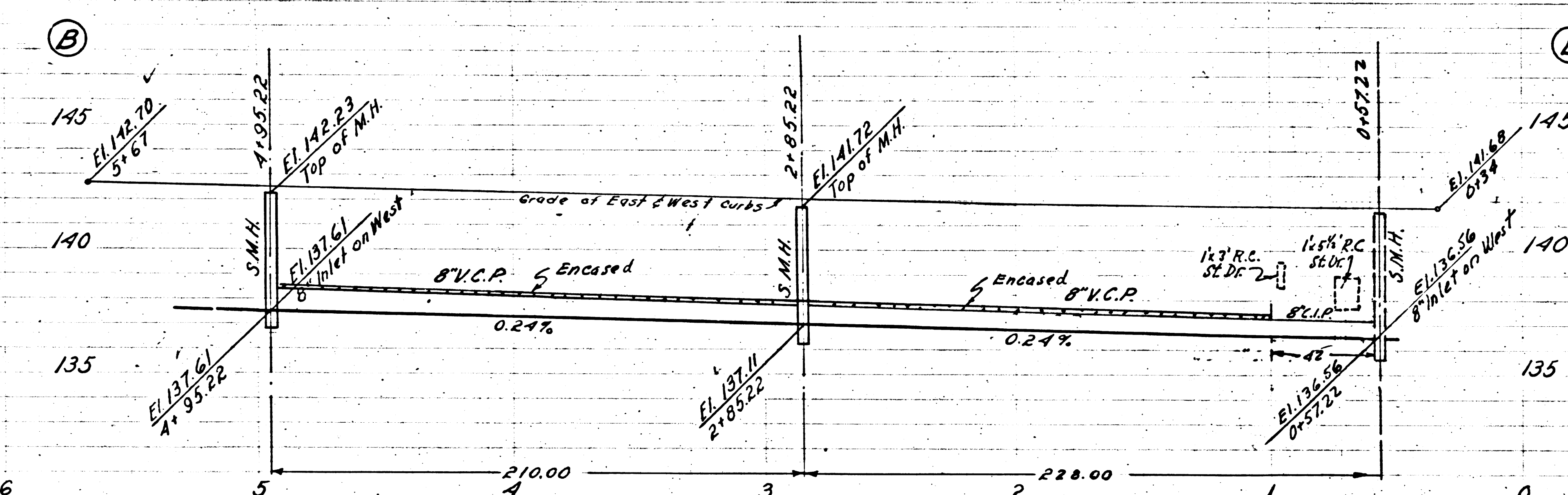


(5)

P.C. 3073
J.N. 095291
Page 4

NO CHARGE FOR CONNECTIONS

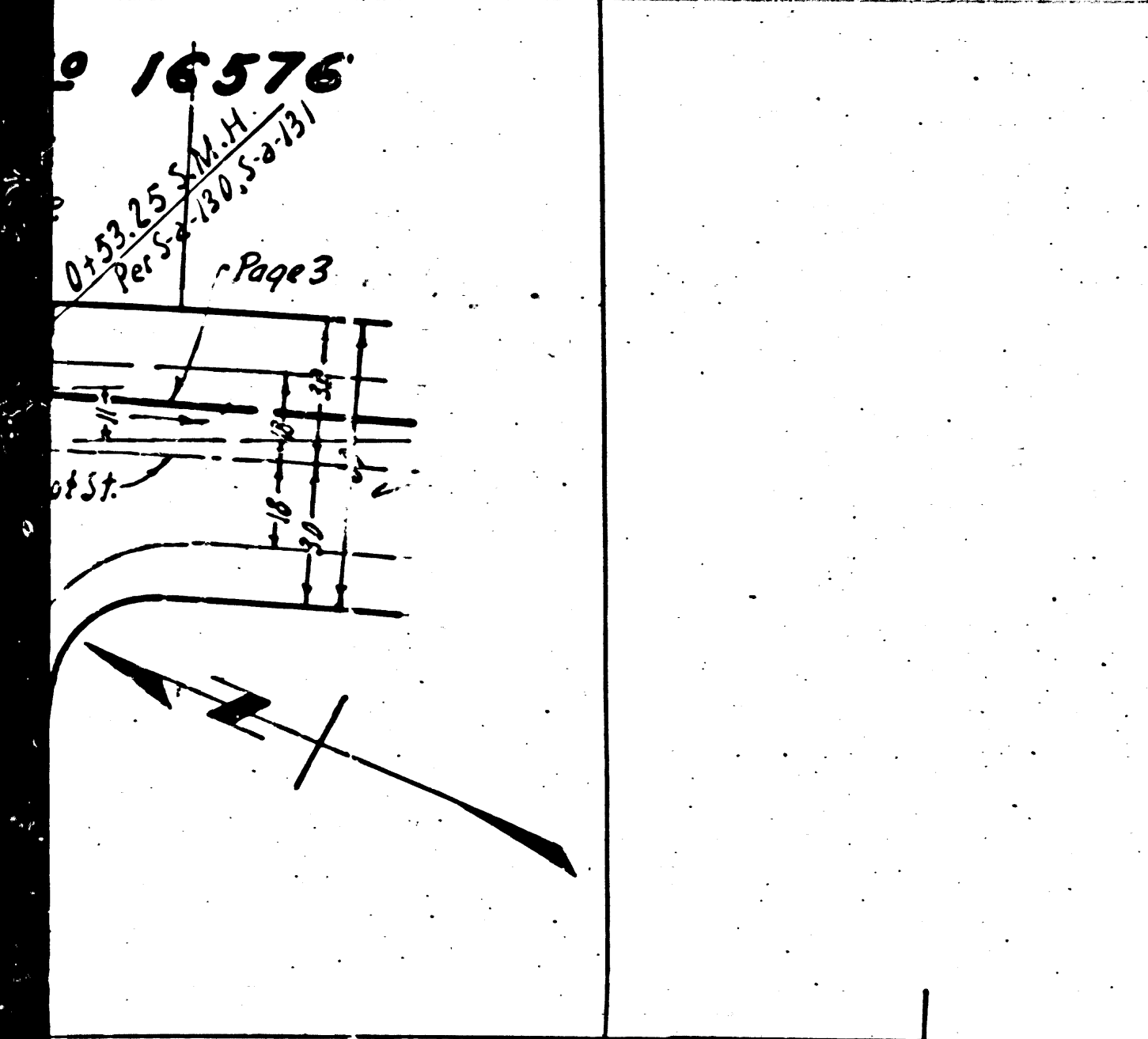
18,975



NO CHARGE FOR CONNECTIONS

P.C. 3079
J.N. 095291
Page 3

18,974

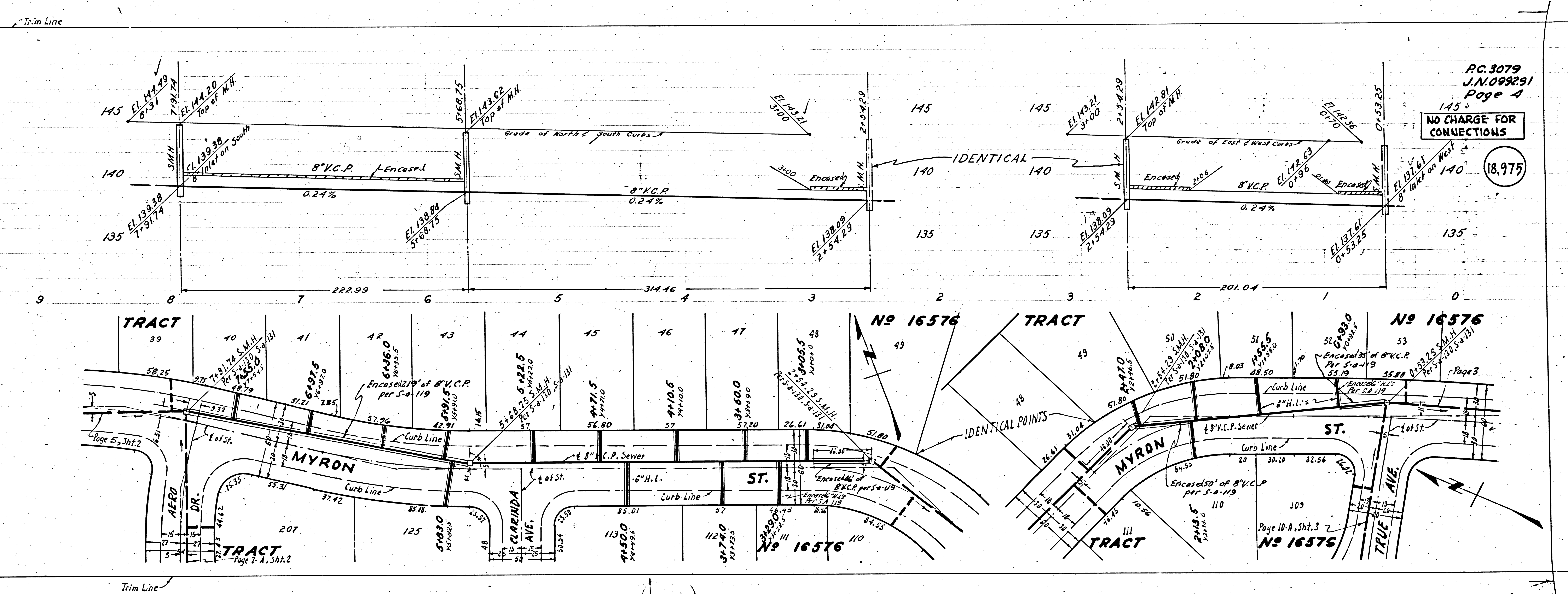


Page 10
Sheet 3

PC 3079
SFPD M.I.

TRACT N^o 16576

16576

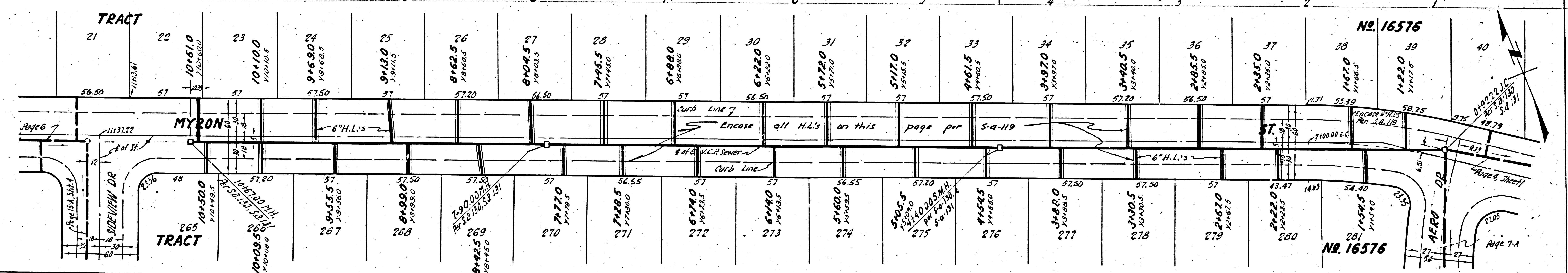
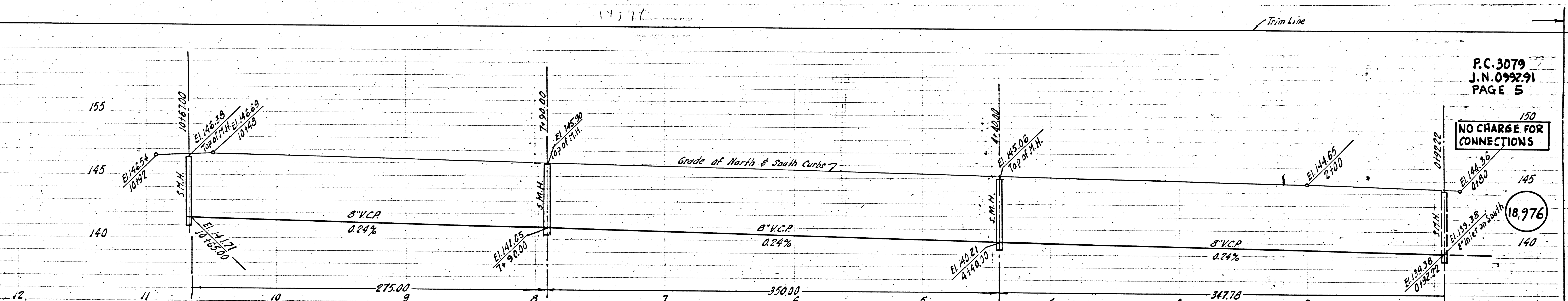


PC 3079
J.N.099291
Page 1

NO CHARGE FOR CONNECTIONS

18,975

Page 10-A, Sht. 3 2
N^o 16576



P.C. 3079
J.N. 099291
PAGE 5

NO CHARGE FOR CONNECTIONS

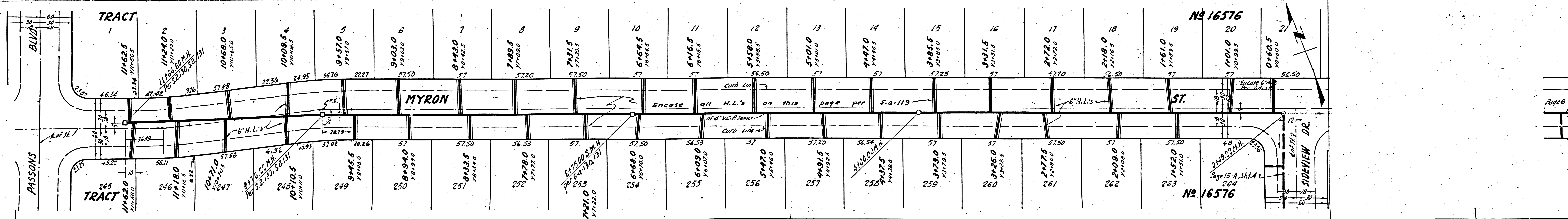
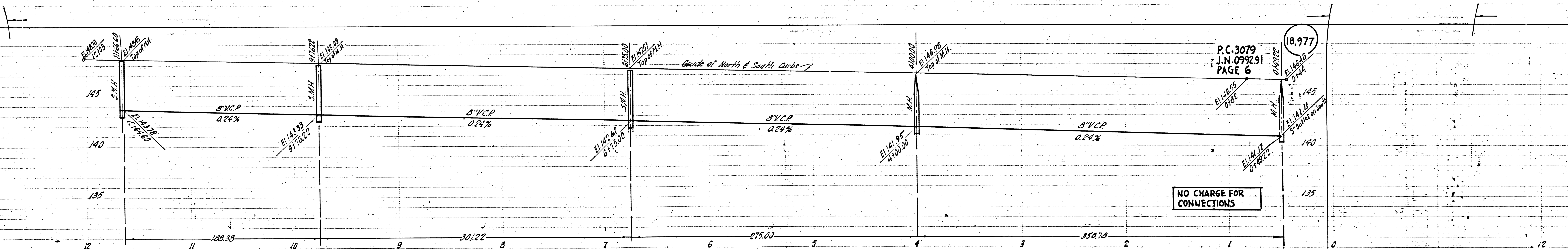
18,976

TRACT No 16576

P.C. 3079
J.N. 099291
PAGE 5

18,976

TRACT No 16576



P.C. 3079
J.N. 079291
PAGE 6

NO CHARGE FOR
CONNECTIONS

No 16576

No 16576

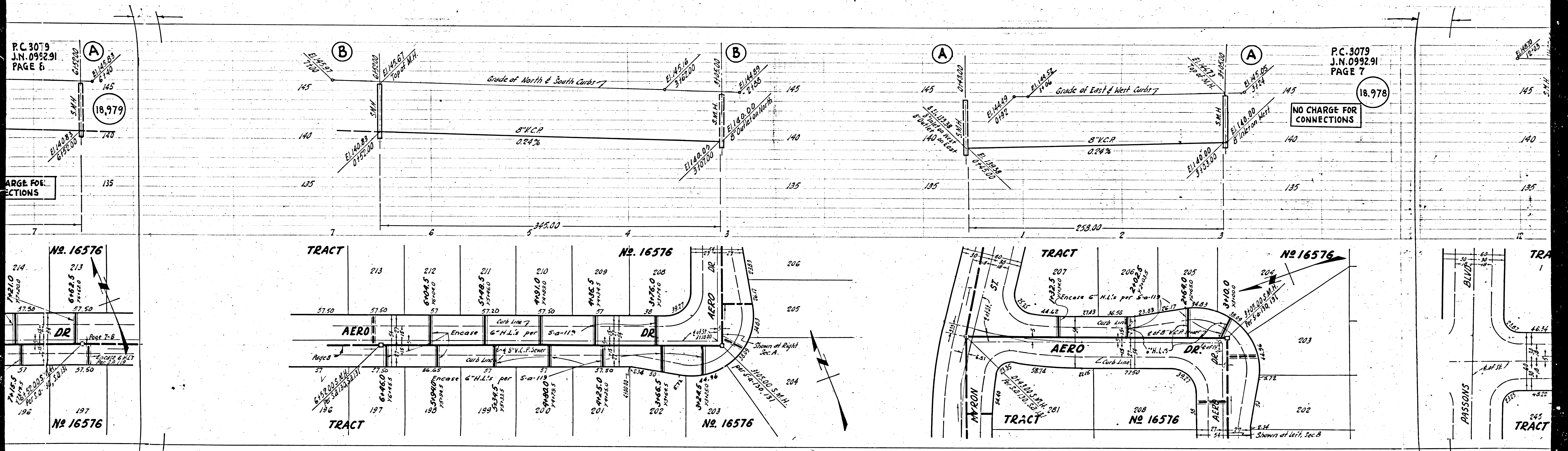
107

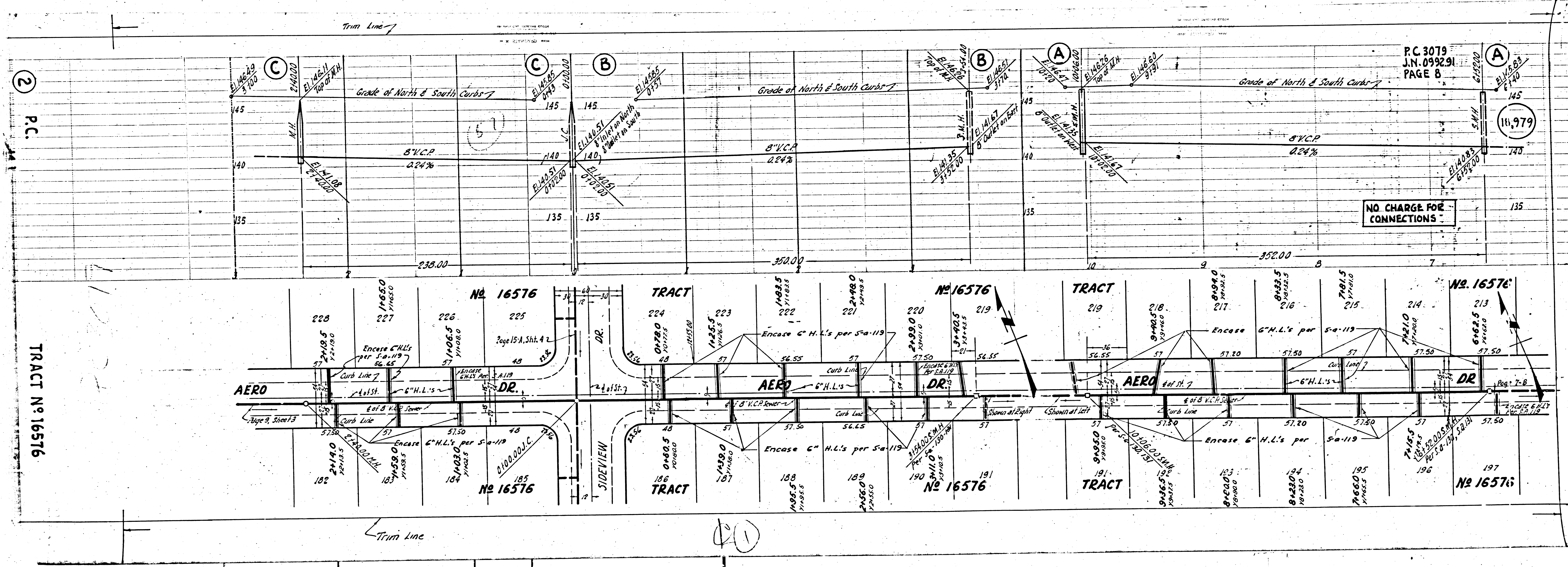
P.C. 3079
J.N. 0992.91
PAGE 6

NO CHARGE FOR CONNECTIONS

P.C. 3079
J.N. 0992.91
PAGE 7

NO CHARGE FOR CONNECTIONS





P.C. 3079
J.N. 099291
PAGE 8

NO CHARGE FOR CONNECTIONS

②
P.C.

TRACT No. 16576

No. 16576

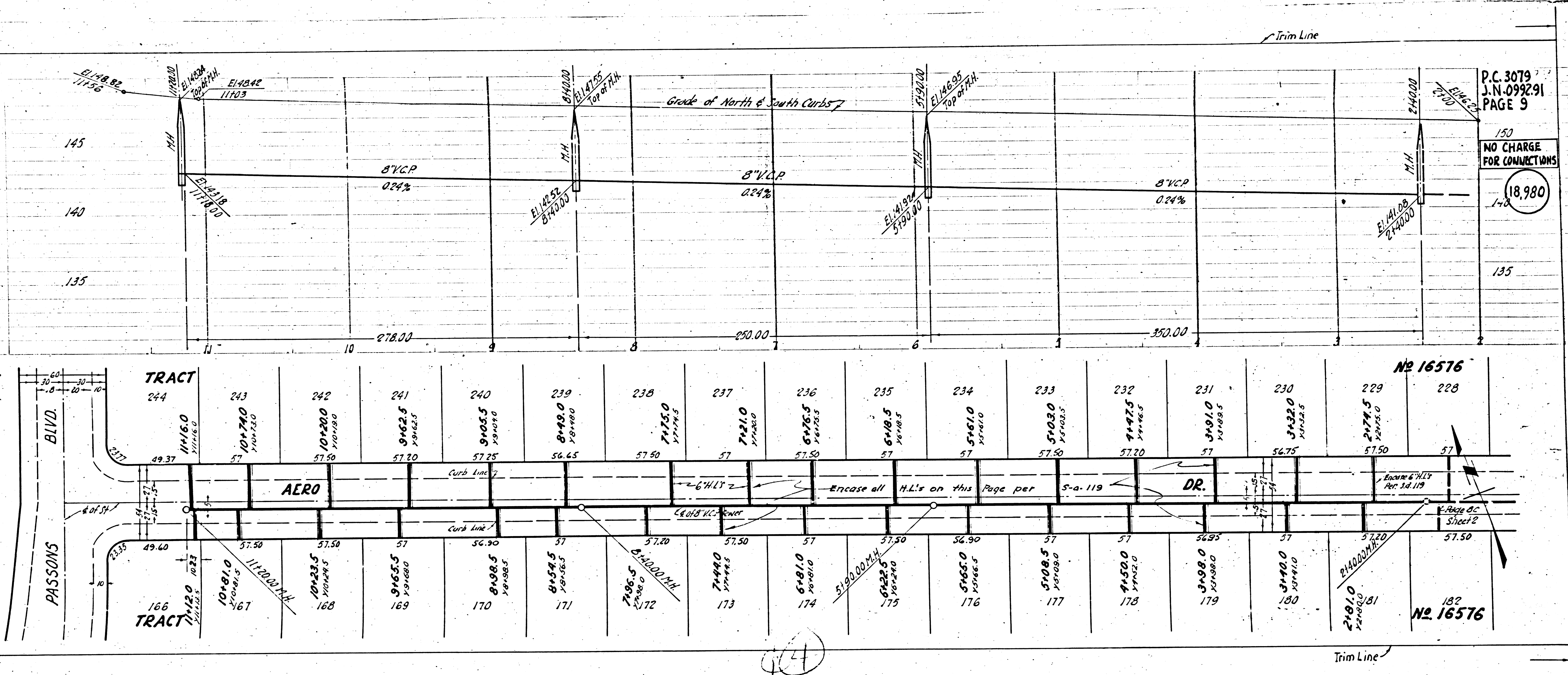
No. 16576

No. 16576

No. 16576

No. 16576

④



P.C. 3079
J.N. 099291
PAGE 9

NO CHARGE
FOR CONNECTIONS

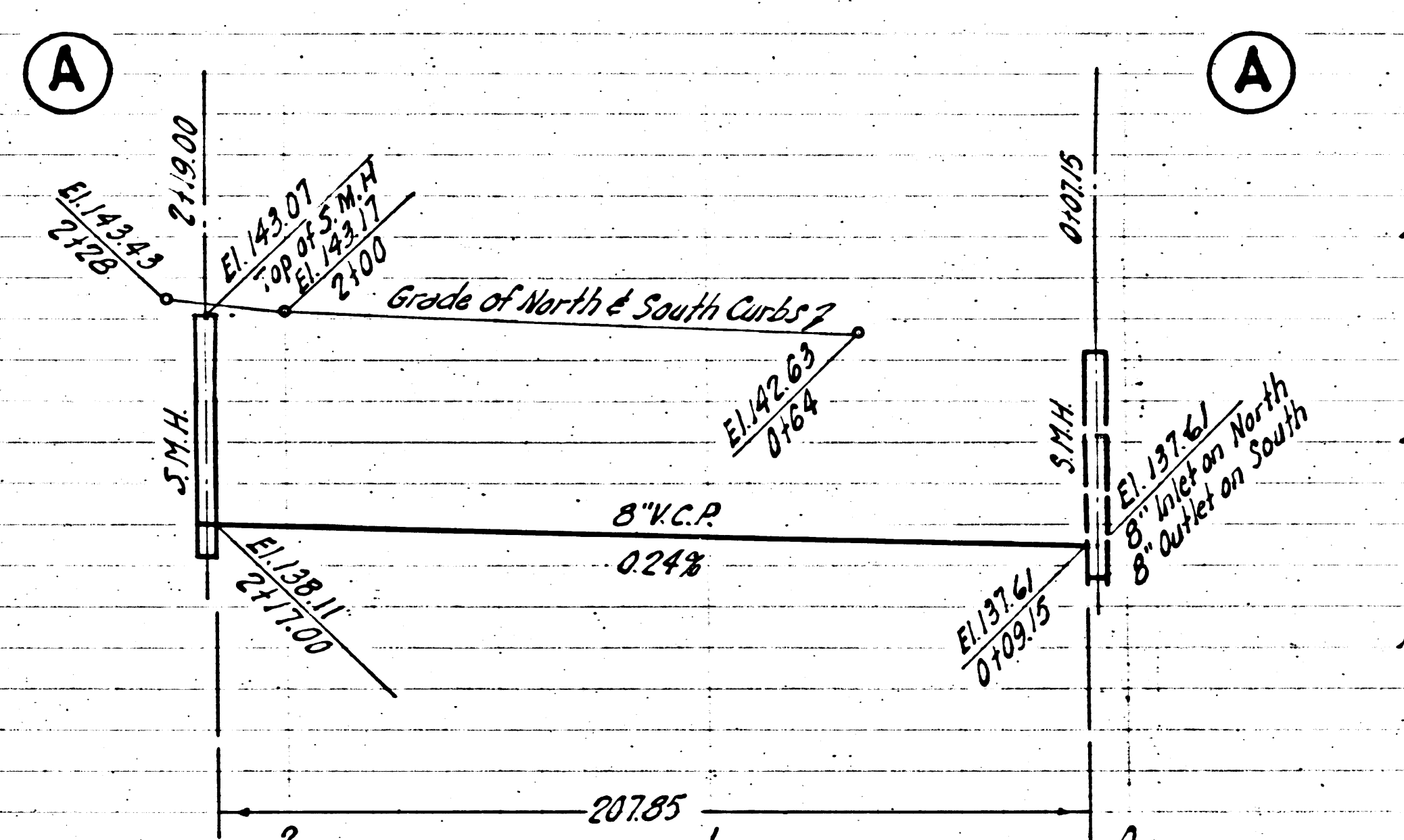
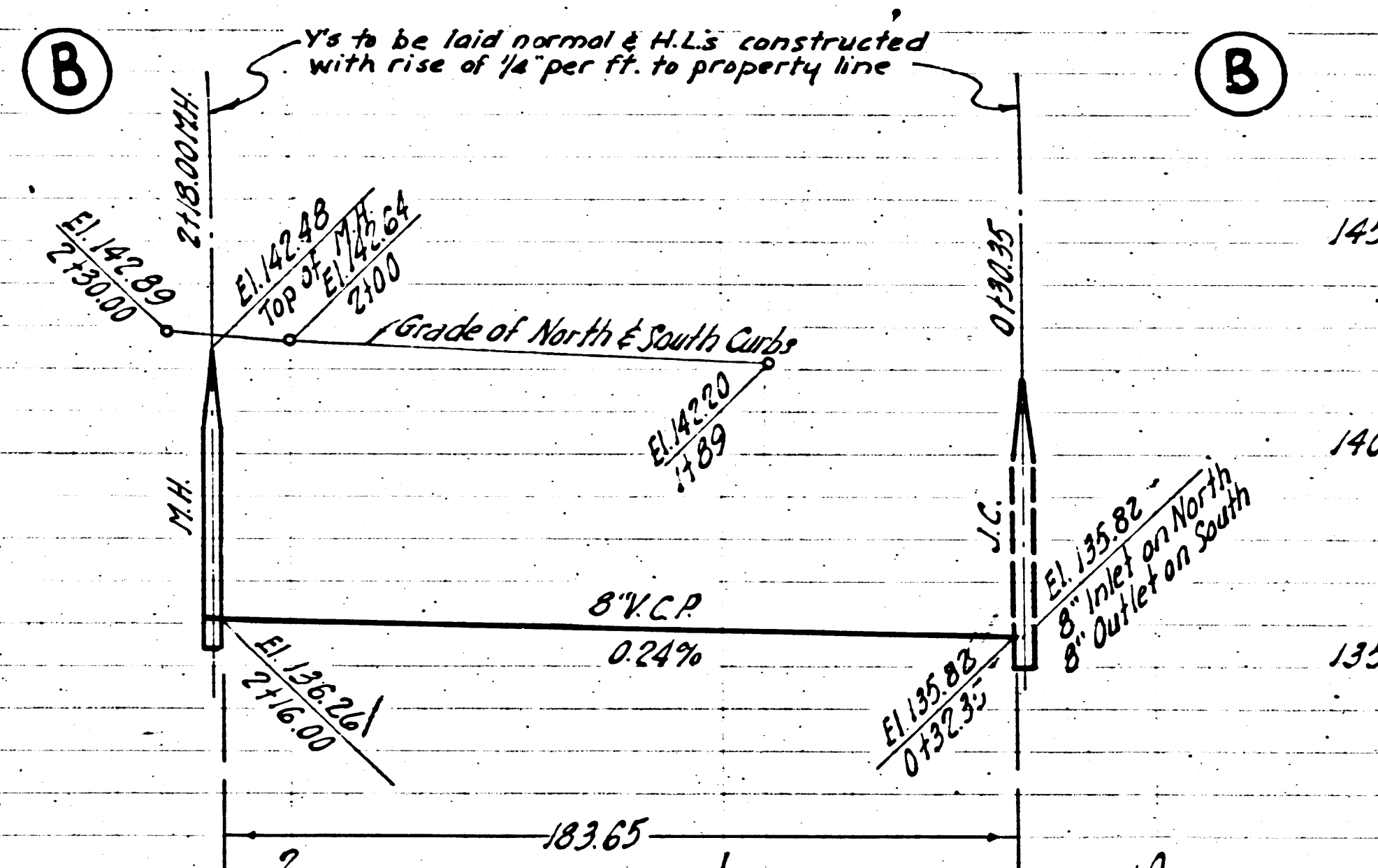
18,980

TRACT No 16576

No 16576

No 16576

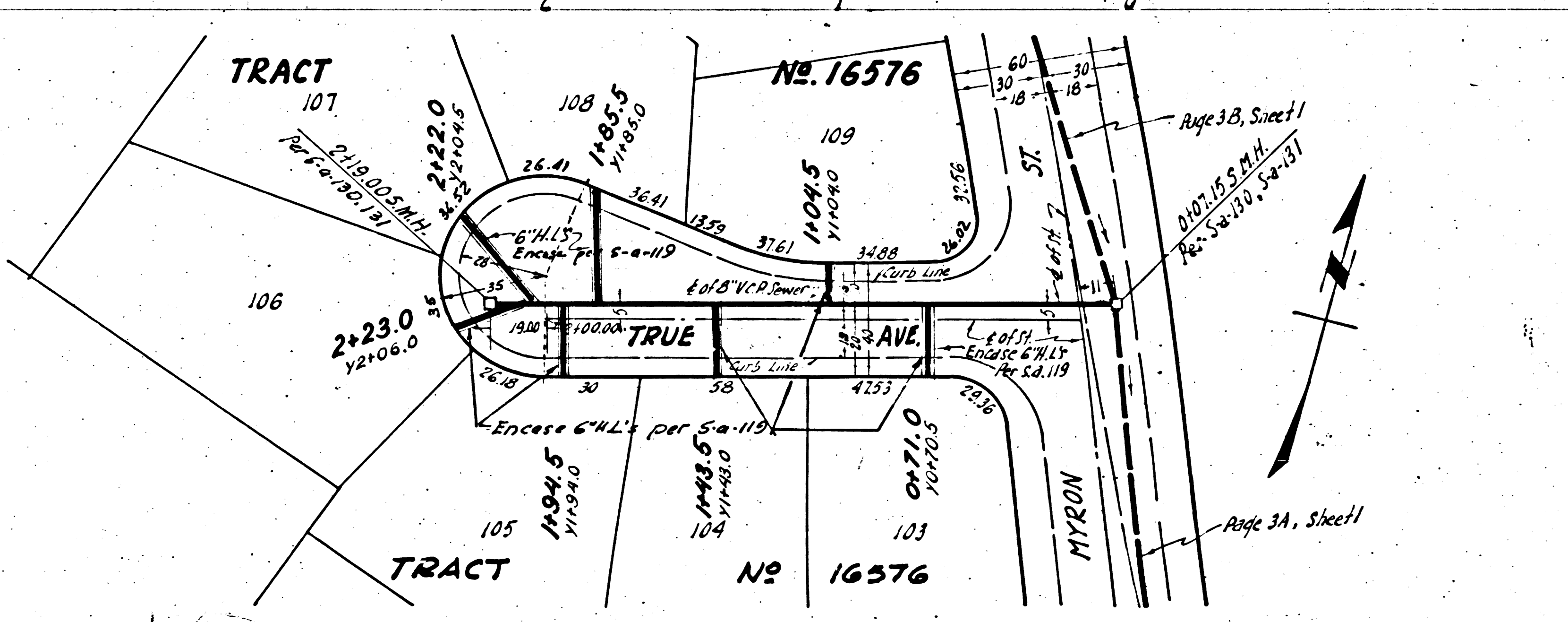
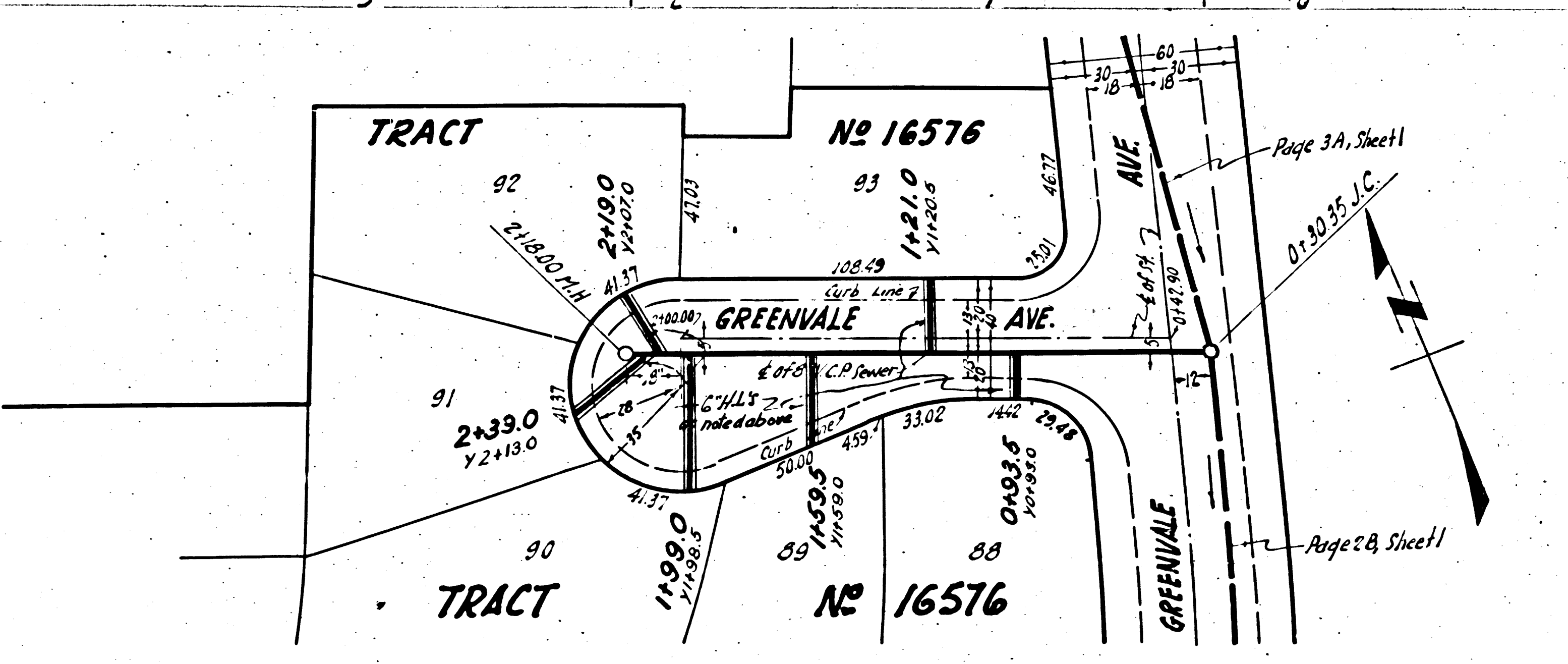
PC 3079
E



P.C. 3079
J.N. 0992.91
PAGE 10

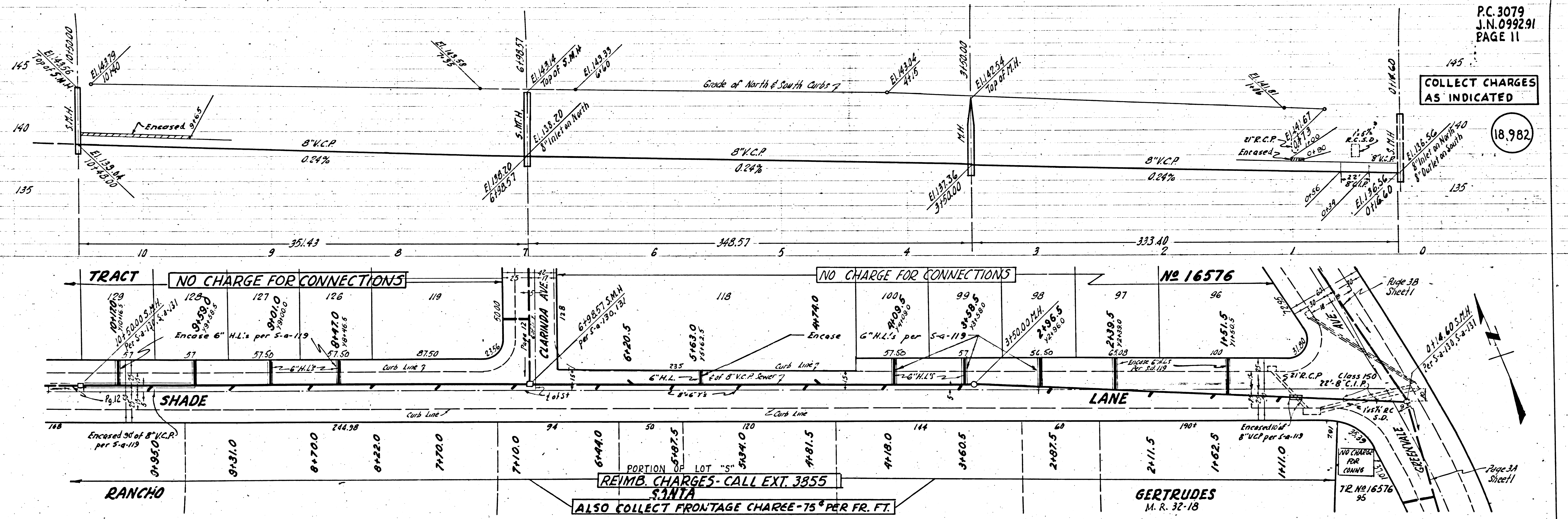
NO CHARGE
FOR CONNECTIONS

18,981



COLLECT CHARGES
AS INDICATED

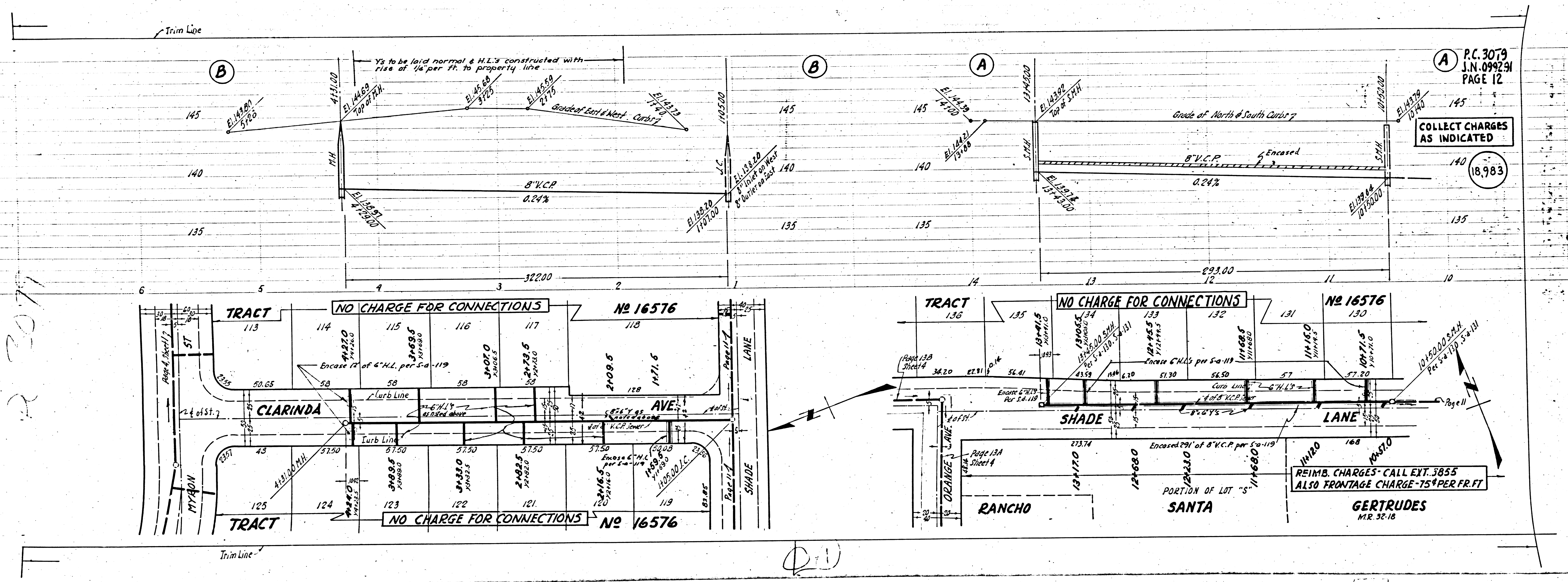
18,982



③ P.C. 3079
I.P. S.F.P.O. M.J.

TRACT No 16576

1402 R



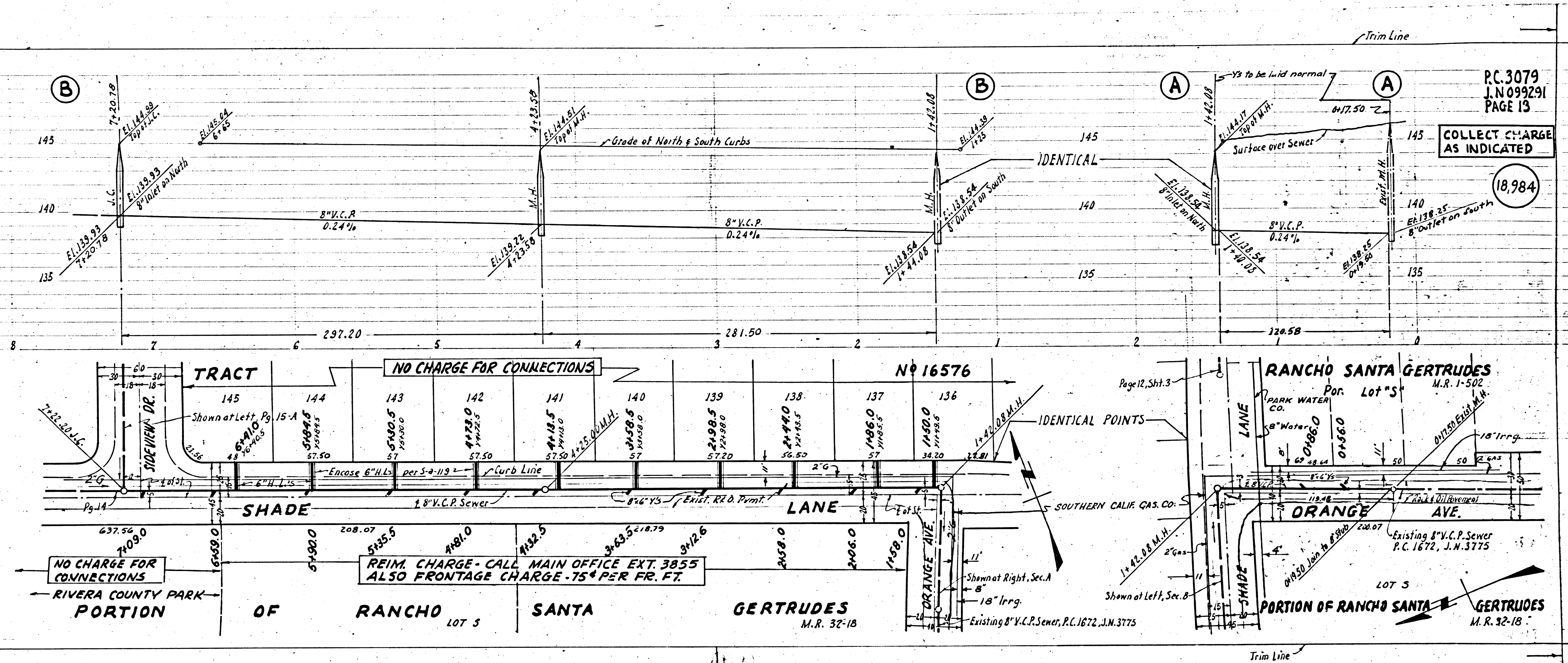
A P.C. 3079
J.N. 099231
PAGE 12

COLLECT CHARGES
AS INDICATED

18,983

REIMB. CHARGES - CALL EXT. 3855
ALSO FRONTAGE CHARGE - 75¢ PER FR. FT.

GERTRUDES
M.R. 52-18



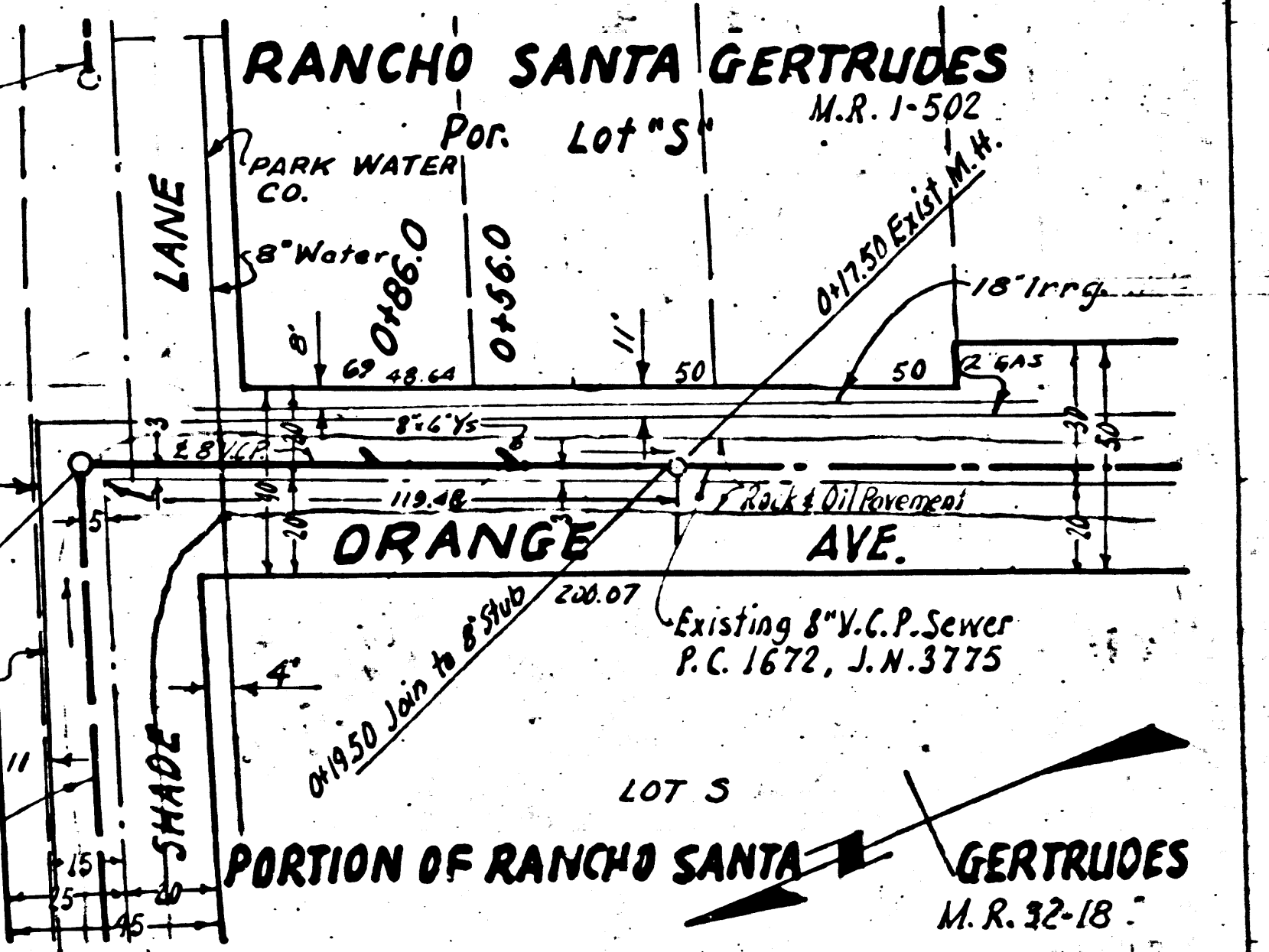
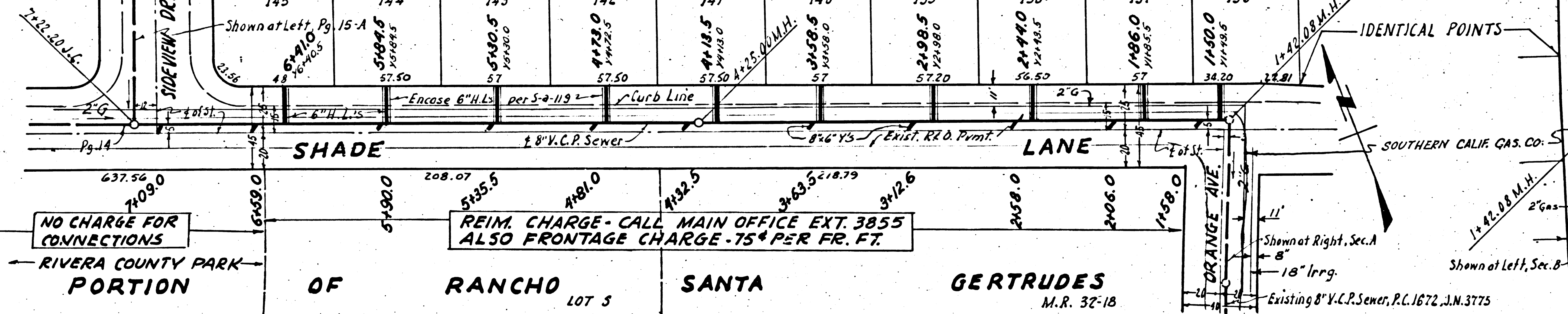
P.C. 3079
J.N. 099291
PAGE 13

COLLECT CHARGE
AS INDICATED

(18,984)

TRACT NO 16576

TRACT NO 16576

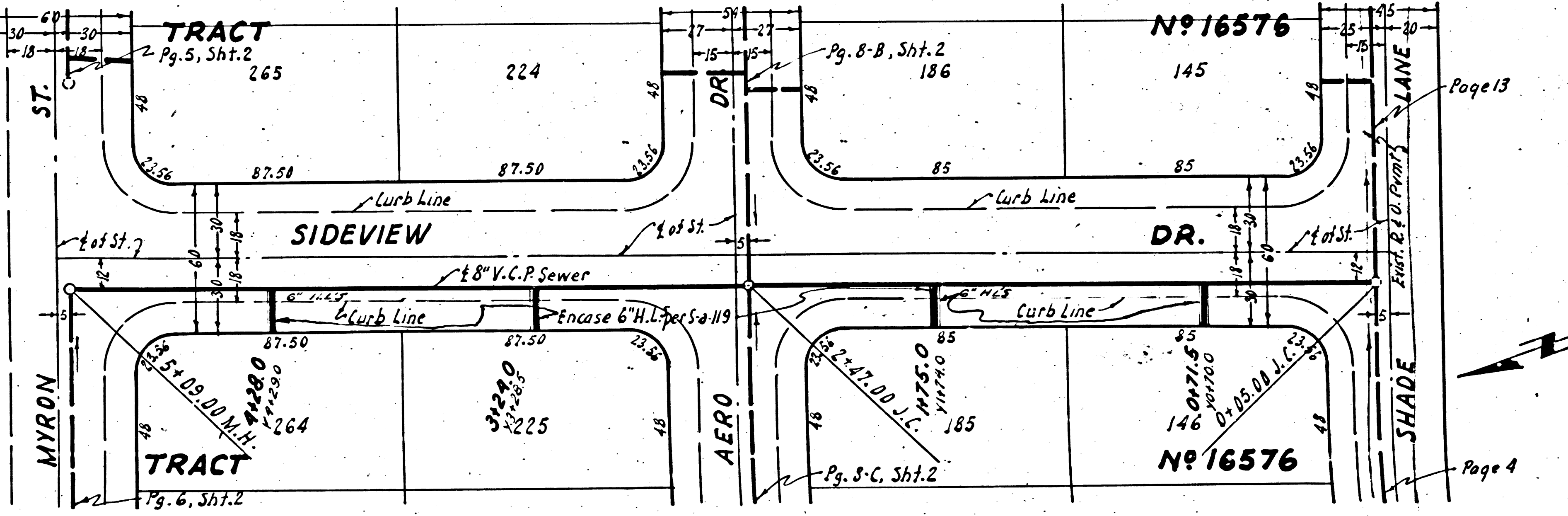
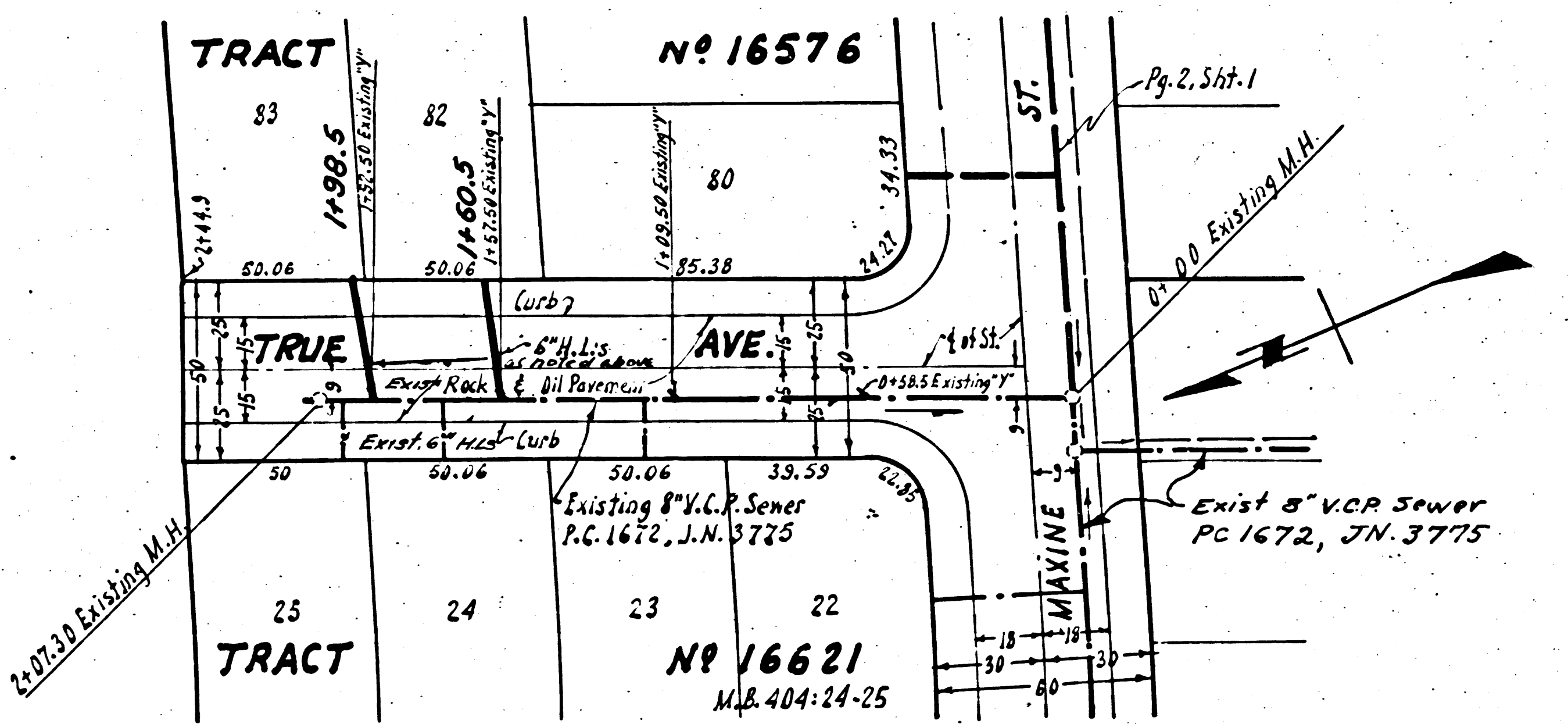
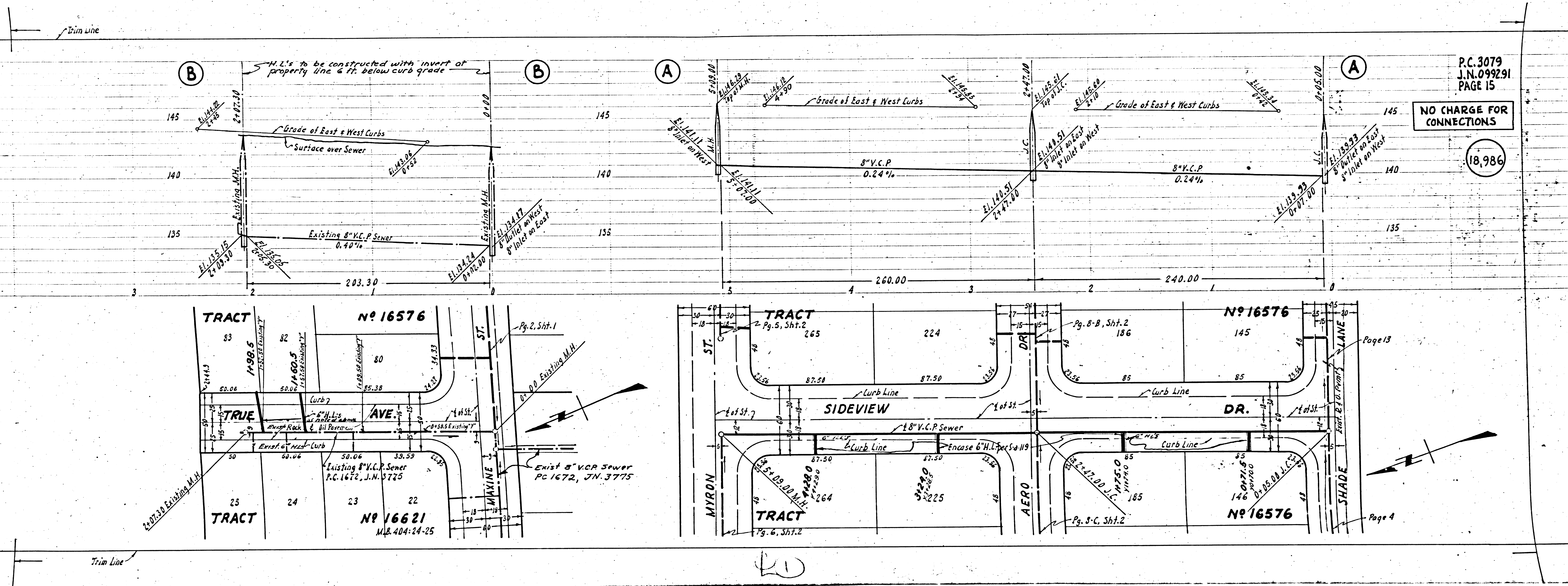


P.C. 3079
J.N. 099291
PAGE 13

19.57
M.L.

P.C. 3079

TRACT No 16576



BLVD.
PASSIONS