

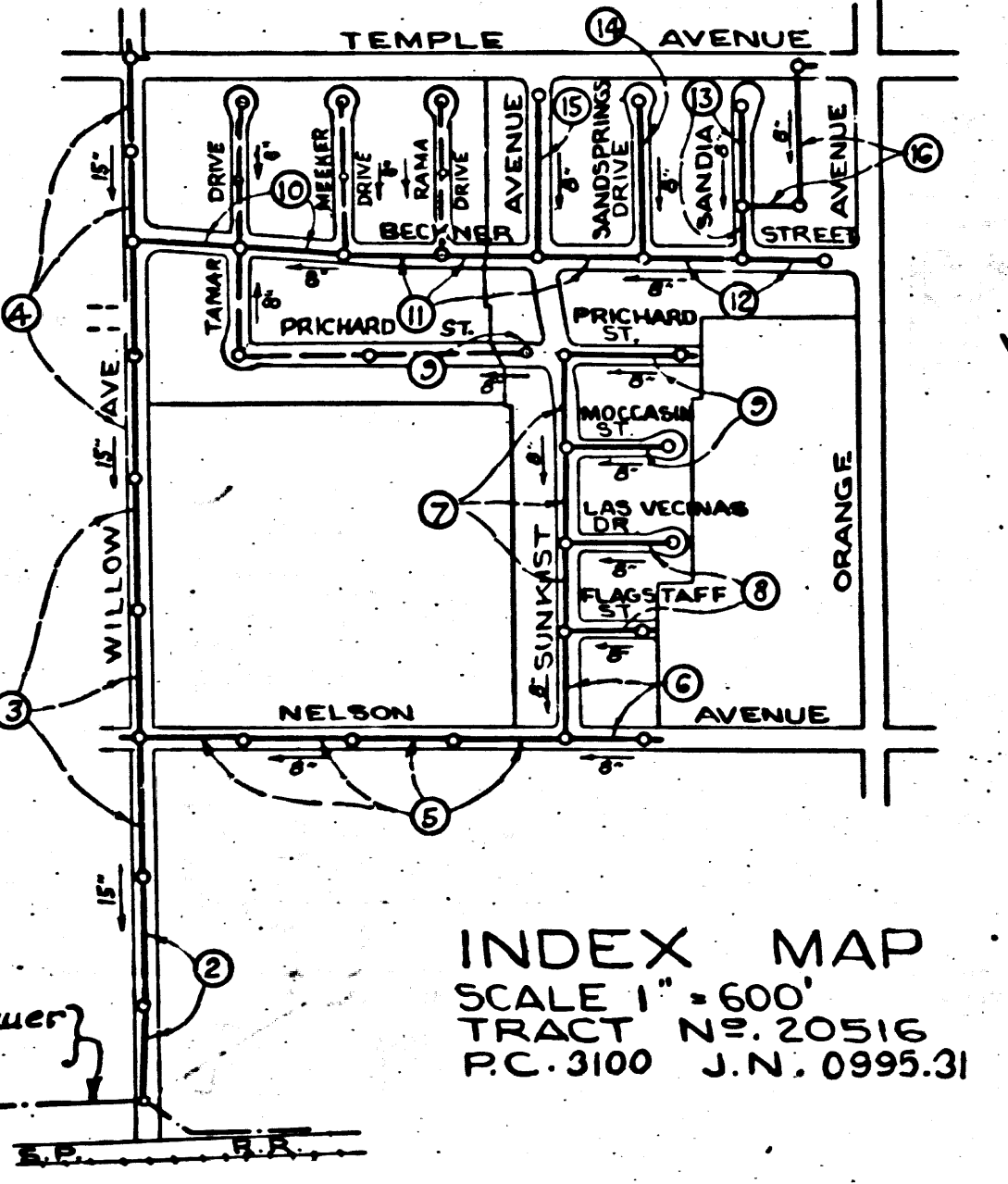
P.C. 3100
J.N. 0995.31
PAGE 2

CHARGES
AS INDICATED

19,428

B.M. S.G. 1093,
Lead & Back near S.W. corner conc. walk
at S.W. corner of House # 1405 Nelson
Ave., N.E. cor. Sunset Ave. & Nelson Ave.
Elev. 304.663

Note:
Lots 60, 61 & 62
being served by
Sewer Constructed
under P. C. 3120



INDEX MAP
SCALE 1" = 600'
TRACT NO. 20516
P.C. 3100 J.N. 0995.31

checked 12-17-54 *W. L. ...*

PUENTE BLDG. DIST. NO 2

- NOTE:**
Provide stakes on the property lines or property lines produced at right angles to the sewer line at the center line of each manhole.
No representative of the County Engineer will survey or layout any portion of the work.
The owner or his authorized representative shall furnish the County Engineer with grade sheets and stations for all house laterals and Y branches and shall provide stakes for them at their proper locations with stationing plainly marked. Any change in location shall be requested in writing by the owner or his representative.
No revisions shall be made in these plans without the approval of the County Engineer.
1. Use standard manhole frames and covers, S-a-117.
 2. Use standard strength pipe except as noted.
 3. Use cement mortar for all vitrified clay pipe joints.
 4. Resurface all trench within paved area to meet L.A. County Road Dept. or California State Highway Dept. requirements in accordance with permit.
 5. Encase four feet of sewer at points of interference with poles, S-a-119.
 6. House laterals to be constructed with inverts at property line 6 feet below curb grade except as noted.
 7. All structures shall be brick sewer structures, S-a-104.
 8. For allowable leakage test, use Formula No. 1, Spec's., Sec. 51.
 9. Manhole tops in unimproved Rights-Of-Way to be 6" above finish grade.

Not to be breaking into any existing sewer and before final acceptance of this work County Sanitation District should be notified in order that required inspection may be made.

SHEET NO.	PAGES
1	1-4
2	5-9
3	10-13
4	14-16

COLLECT CHARGES
AS INDICATED
L. L. ... 8-16-59

PROFILE, ALIGNMENT AND GRADE OF SANITARY SEWERS TO BE CONSTRUCTED IN

TRACT NO 20516

PRIVATE CONTRACT NO. 3100
W. S. 37, 38, 46,
4 SHEETS

Scale: VERT. 1" = 4'
HORIZ. 1" = 40'
AUGUST 1954
PREPARED IN THE OFFICES OF
NATIONAL ENGINEERING &
SURVEYING SERVICE CO.

Edgeworth J. Epurson
Reg. C. E. No. 5822
FOR LEGEND SEE PLAN NO. S-a-64

NOTE:
Grades to which this improvement is to be constructed are shown on plans and profiles. Grade points for top of curbs, center line of streets, or center line of alleys are shown by circles on profiles. At all points between designated points the grade shall be established so as to conform to a straight line drawn between said designated points.
Elevations are in feet above U.S.G.S. datum or mean sea level.
This drawing and the data hereon are hereby made a part of the specifications.
Work shall be constructed according to specifications on file in the office of the County Engineer and shall be prosecuted only in the presence of the County Engineer.
Before work can be started, the contractor must obtain a permit to excavate in County streets from the L.A. County Road Dept., 108 W. 2nd St. and make a deposit with the County Engineer, 733 L.A. County Engineering Building, sufficient to cover the cost of construction inspection and record plans.
Approval of this plan by the County of Los Angeles does not constitute a representation as to the accuracy of the location or the existence or non-existence of any underground utility, pipe, or structure within the limits of this project. This note applies to all sheets.
If work is to be done in a State Highway, a permit must be obtained from the State of California, Division of Highways, 120 South Spring Street.

COUNTY OF LOS ANGELES, CALIFORNIA
Approved, William J. Fox, County Engineer
Approved, A. M. Revn
CHIEF ENGR. CO. SAN DIST. NO. 13
A. P. Collins
Sanitation Engineer
E. P. Bennett
ASST. Office Engineer
Checked by: *...* 8-16-54
Office of County Engineer, Reg. C. E. No. 7860

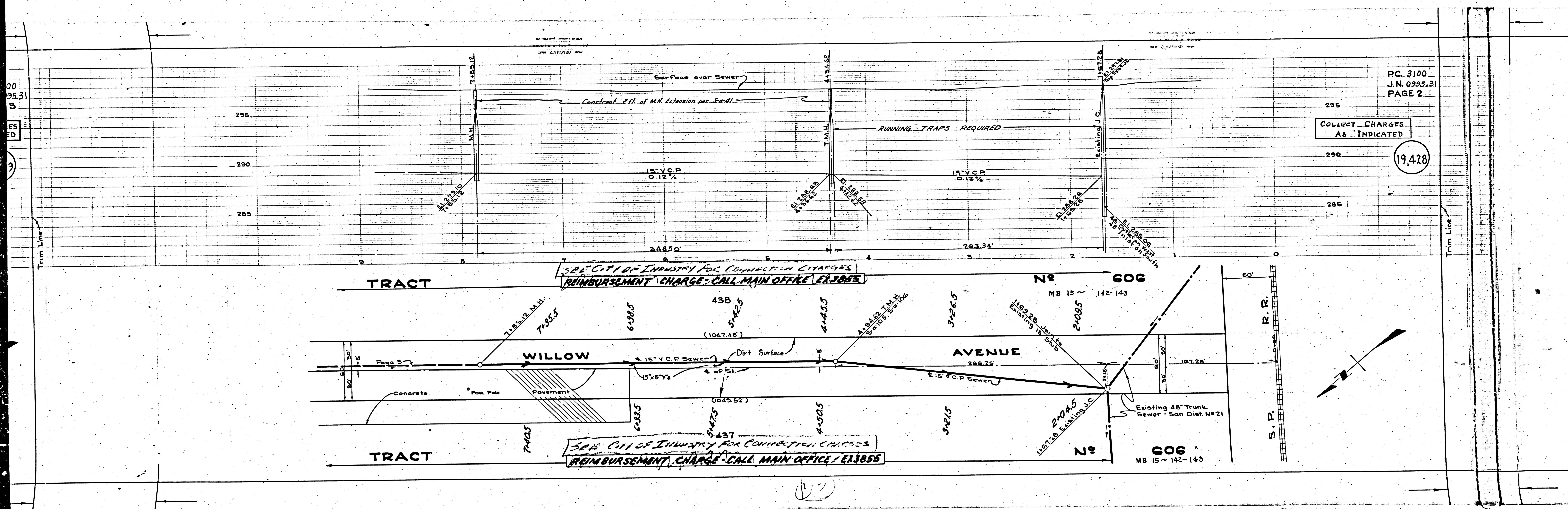
P.C. 3100
J.N. 0995.31
PAGE 1

19,427

(16)

TRACT NO 20516

11



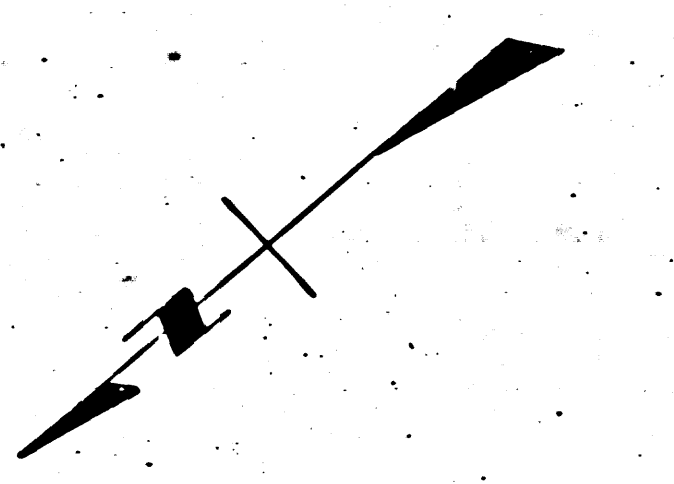
RC. 3100
J.N. 0935.31
PAGE 2

COLLECT CHARGES
AS INDICATED

19,428

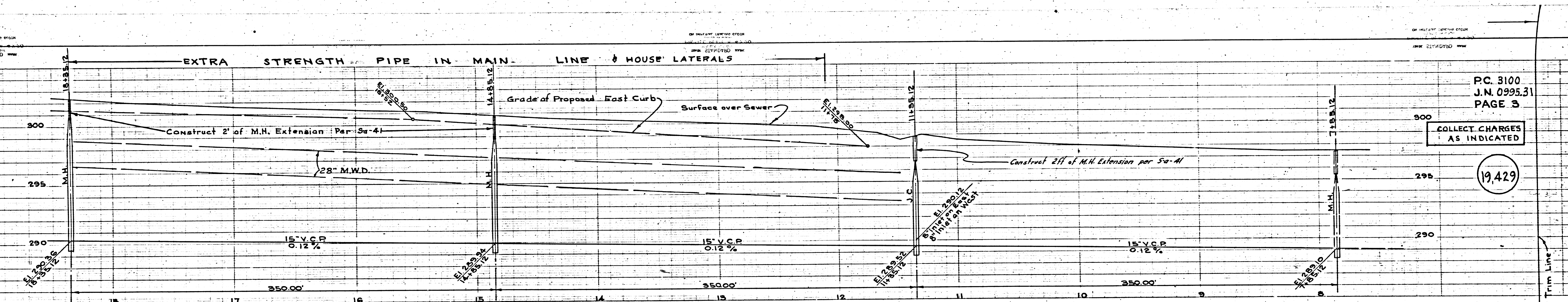
S.P. CITY OF INDUSTRY FOR CONNECTION CHARGES
REIMBURSEMENT CHARGE - CALL MAIN OFFICE / ER3855

S.P. CITY OF INDUSTRY FOR CONNECTION CHARGES
REIMBURSEMENT CHARGE - CALL MAIN OFFICE / ER3855



00
95.31
S
ES
ED
9

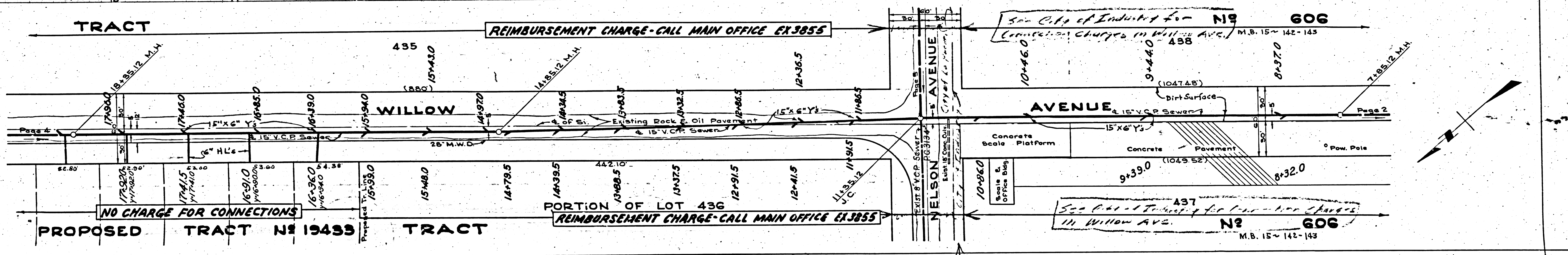
11-30

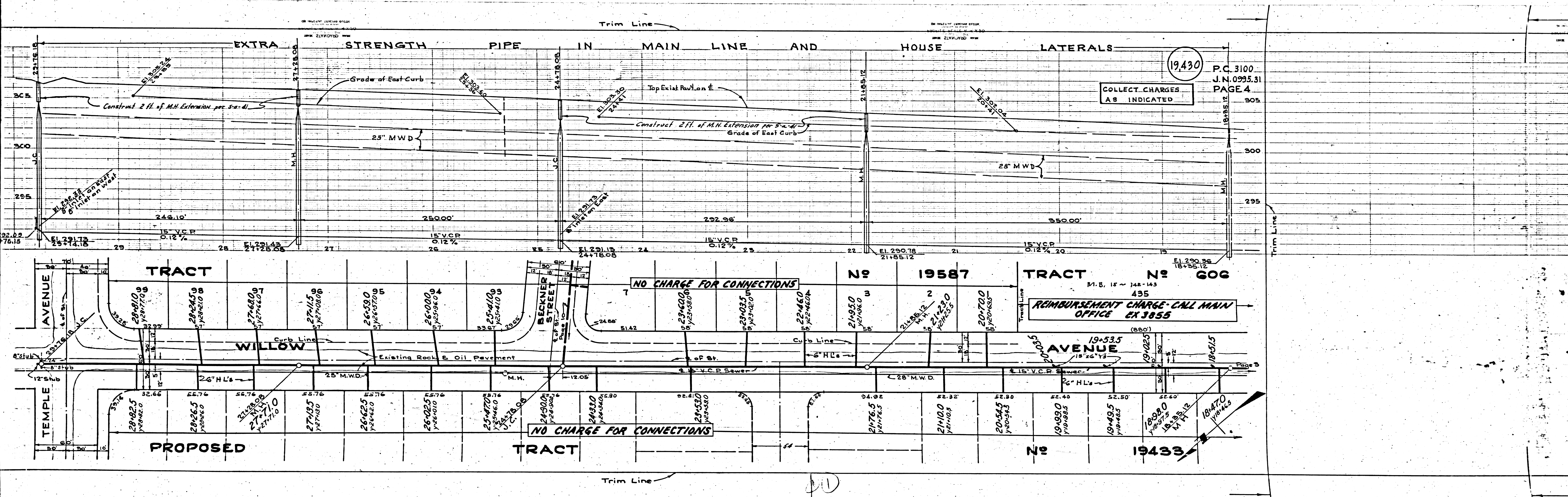


PC. 3100
J.N. 0995.31
PAGE 3

COLLECT CHARGES AS INDICATED

19,429





COLLECT CHARGES AS INDICATED

19430

P.C. 3100
J.N. 0995.31
PAGE 4

NO CHARGE FOR CONNECTIONS

TRACT No 19587

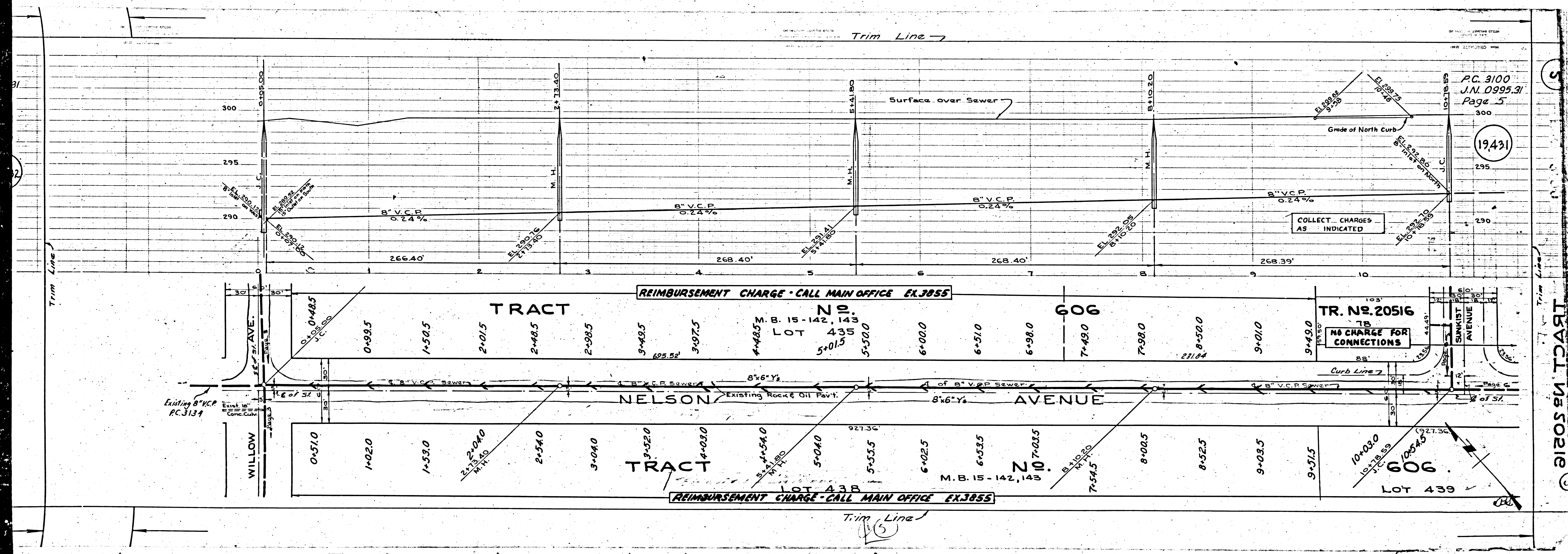
TRACT No 606

REIMBURSEMENT CHARGE - CALL MAIN OFFICE EX 3855

NO CHARGE FOR CONNECTIONS

TRACT No 19433

10



PG. 3100
J.N. 0995.91
Page 5

300

295

290

230

103

102

101

100

99

98

97

96

95

94

93

19431

300

295

290

230

103

102

101

100

99

98

97

96

95

94

93

TRACT NO. 606

TRACT NO. 606

TRACT NO. 606

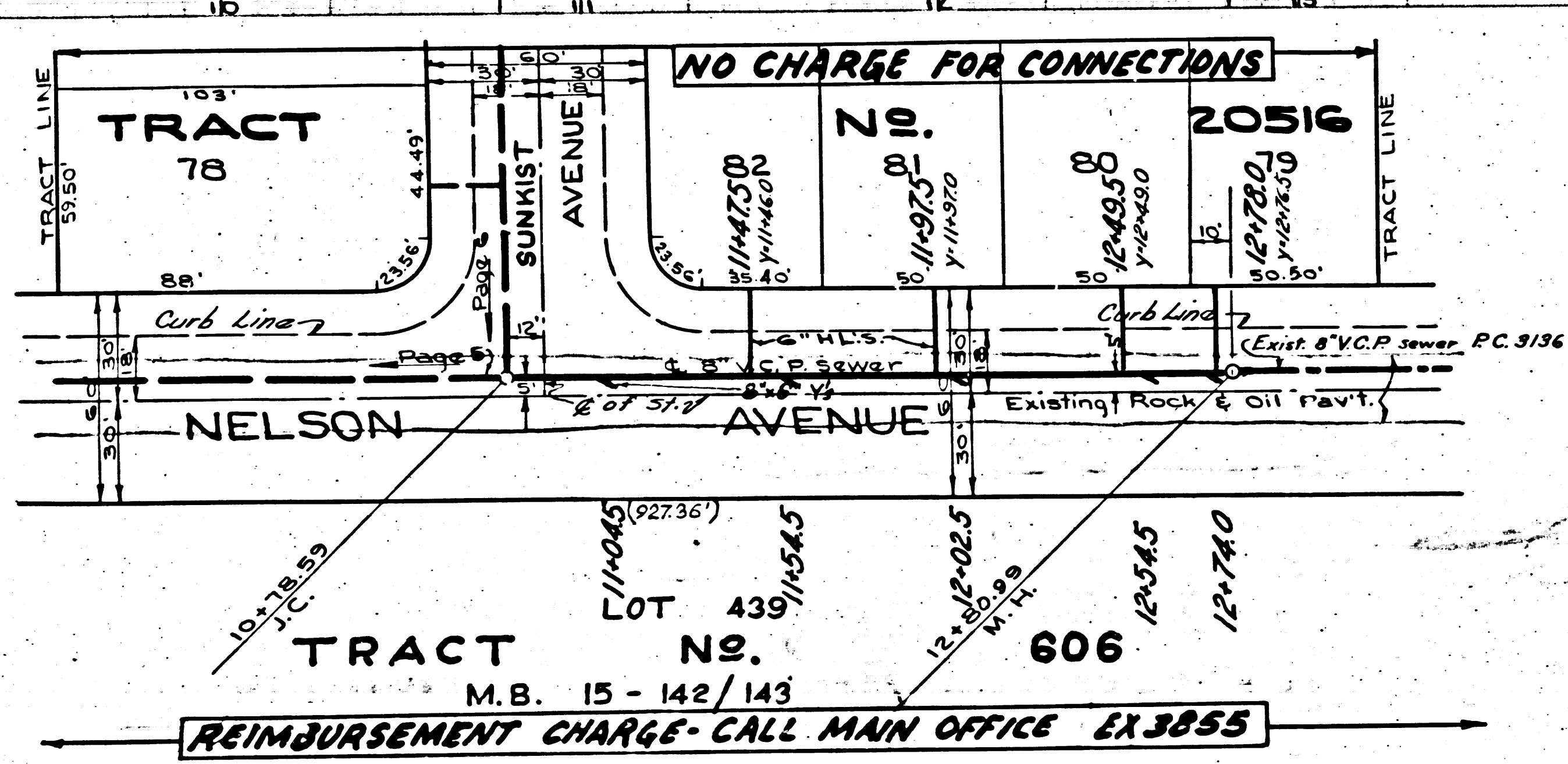
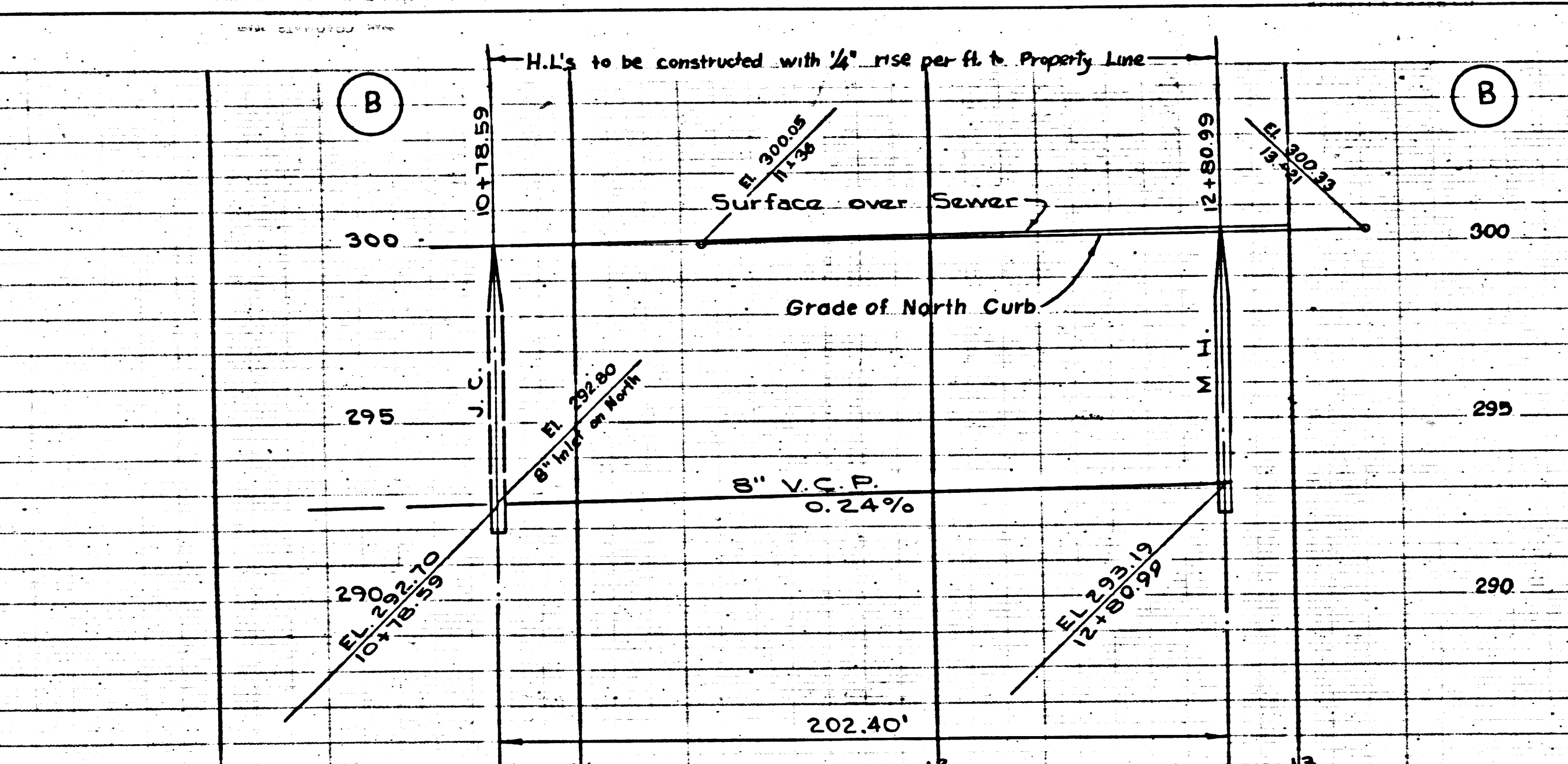
TRACT NO. 606

TRACT NO. 606

TRACT NO. 606

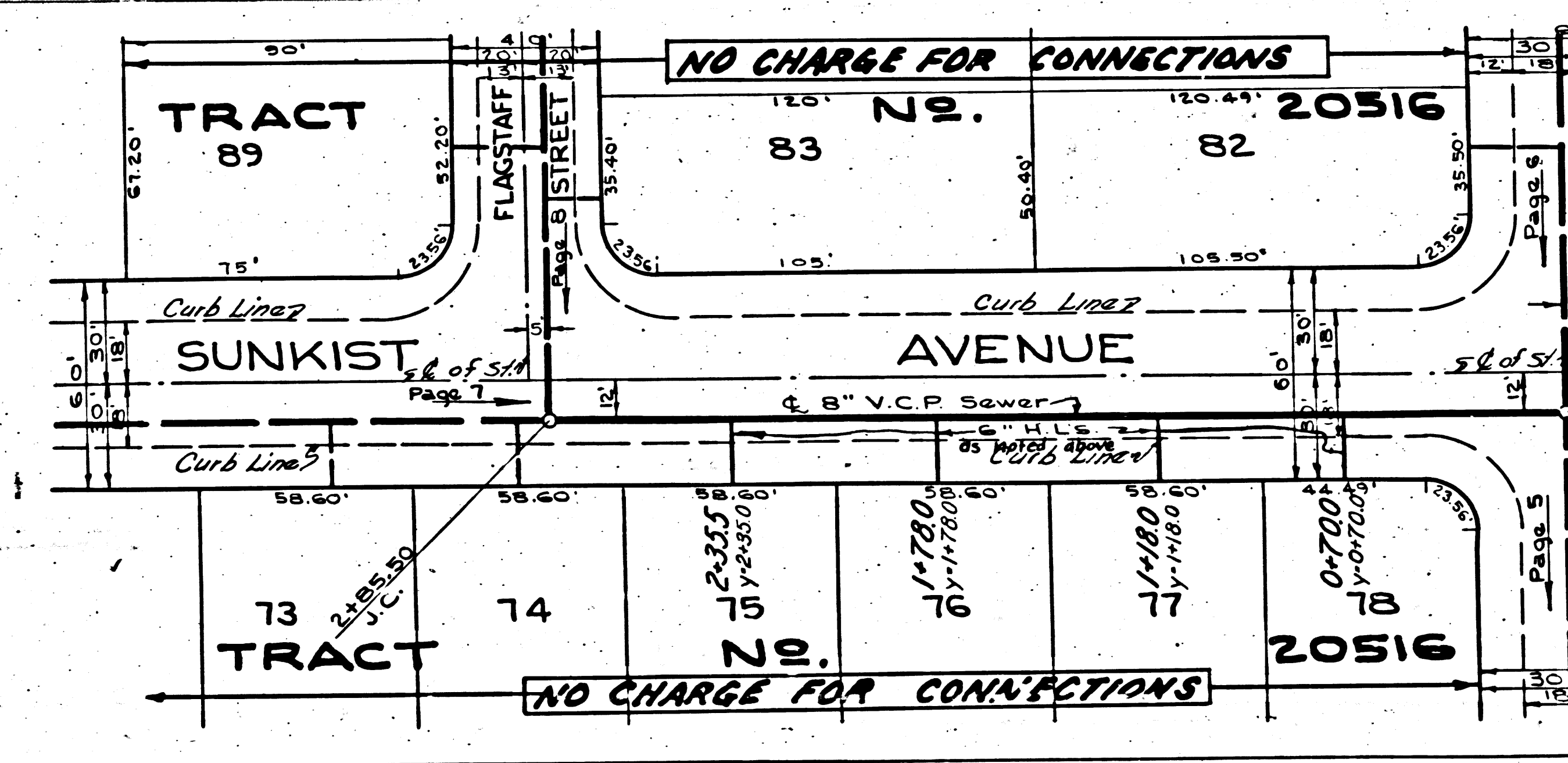
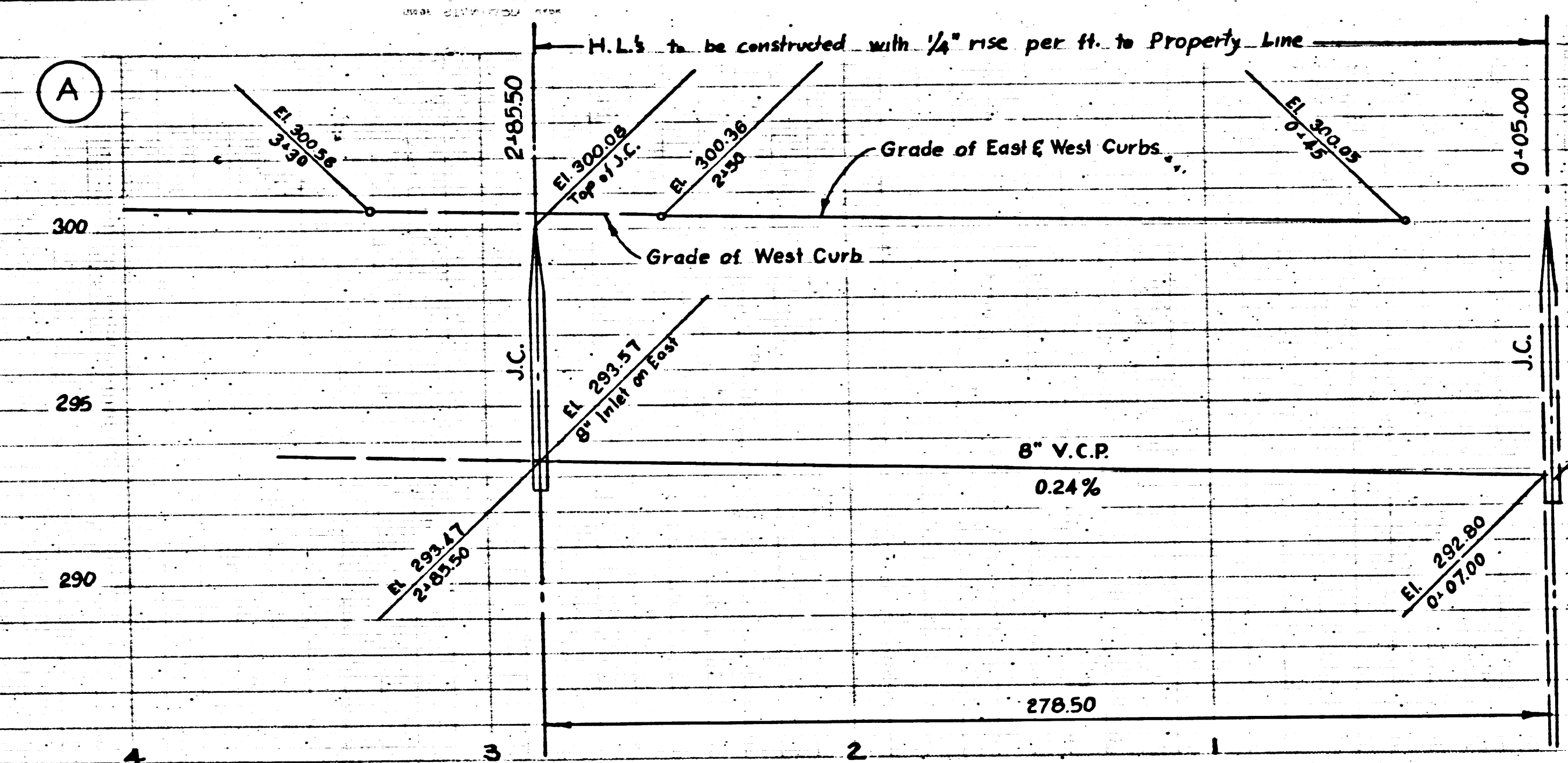
TRACT NO. 606

433



REIMBURSEMENT CHARGE - CALL MAIN OFFICE EX 3855

Trim Line 7



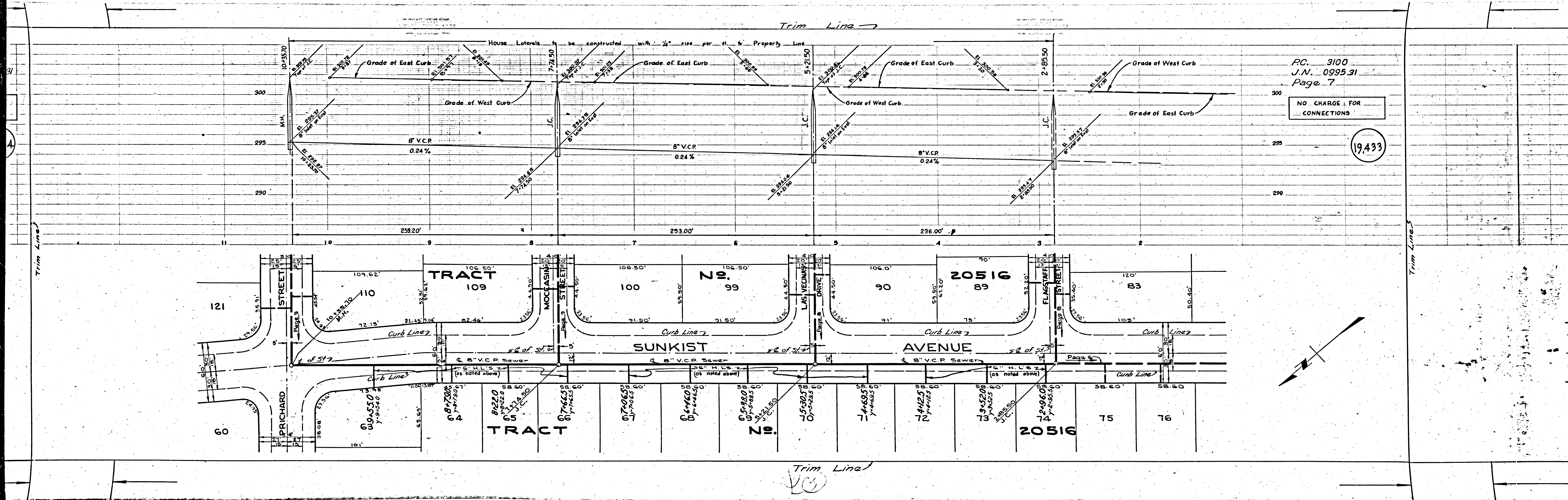
Trim Line 7

P.C. 3100
J.N. 0995.31
Page 6

COLLECT CHARGES
AS INDICATED

19,432

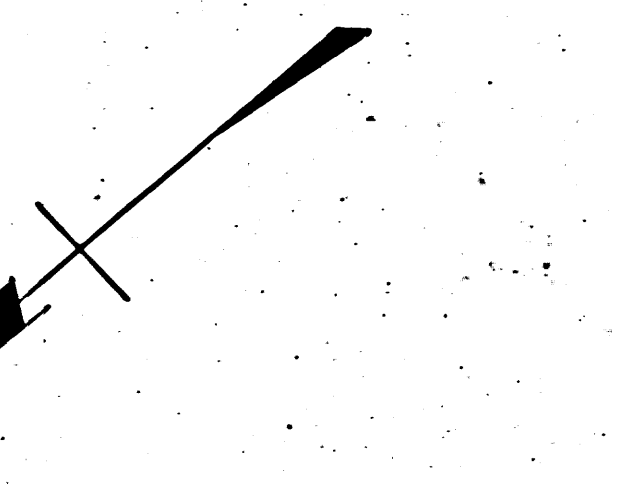
Existing 8" V.C.P.
P.C. 3134



PC. 3100
 J.N. 0995.31
 Page 7

NO CHARGE FOR CONNECTIONS

19,433

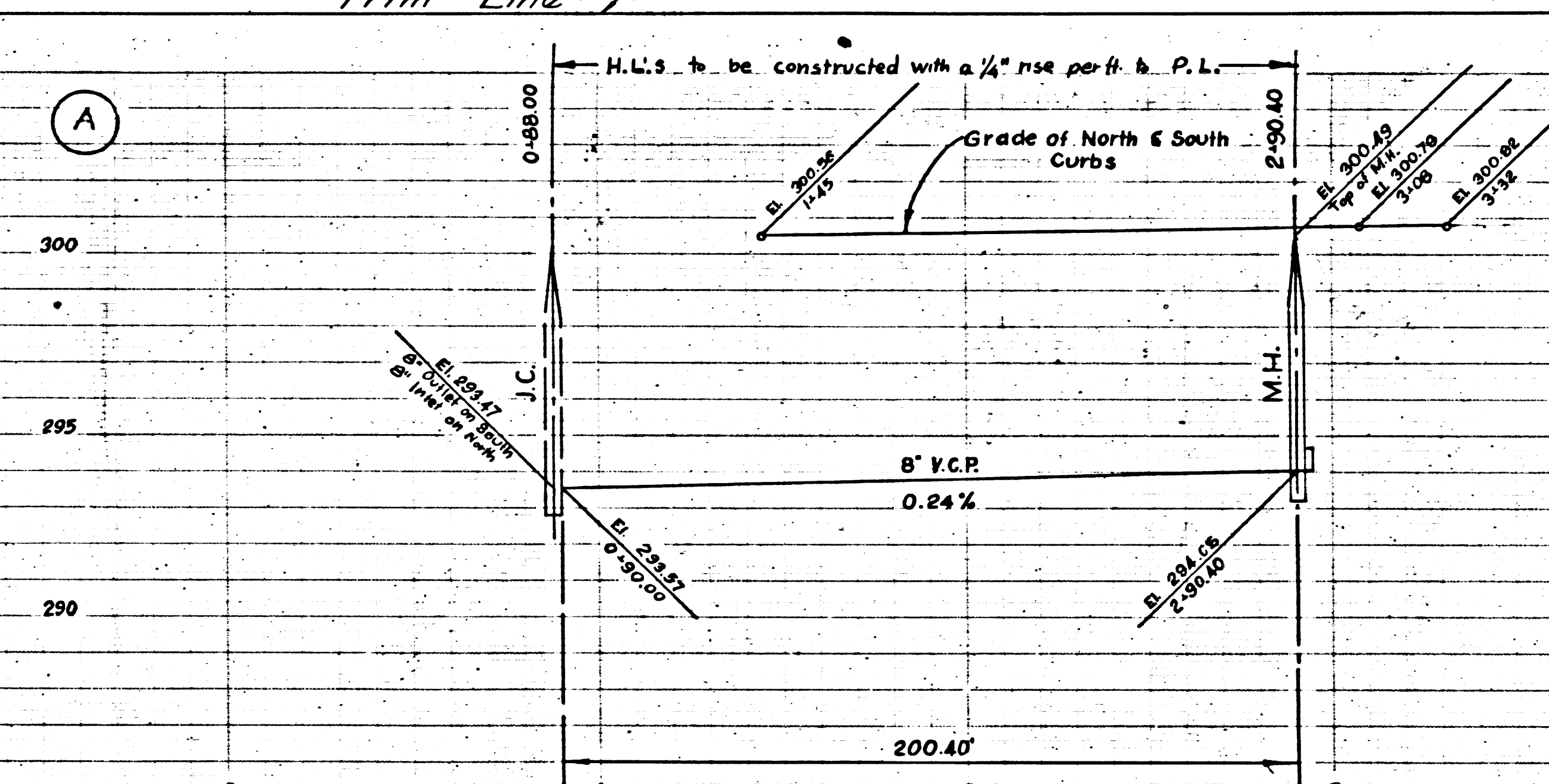
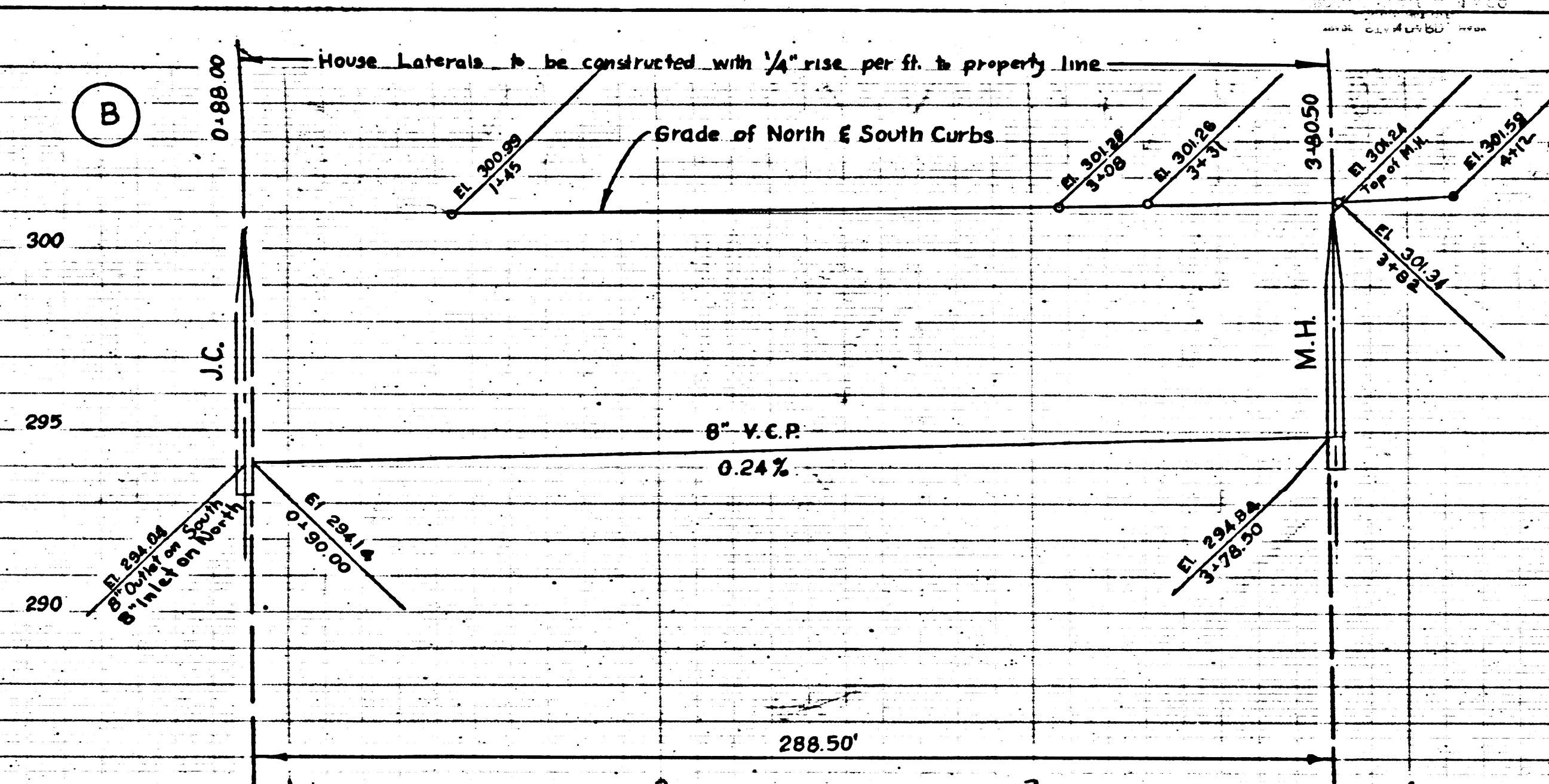


Trim Line

P.C. 3100
J.N. 0595.31
Page 9

NO CHARGE FOR CONNECTION

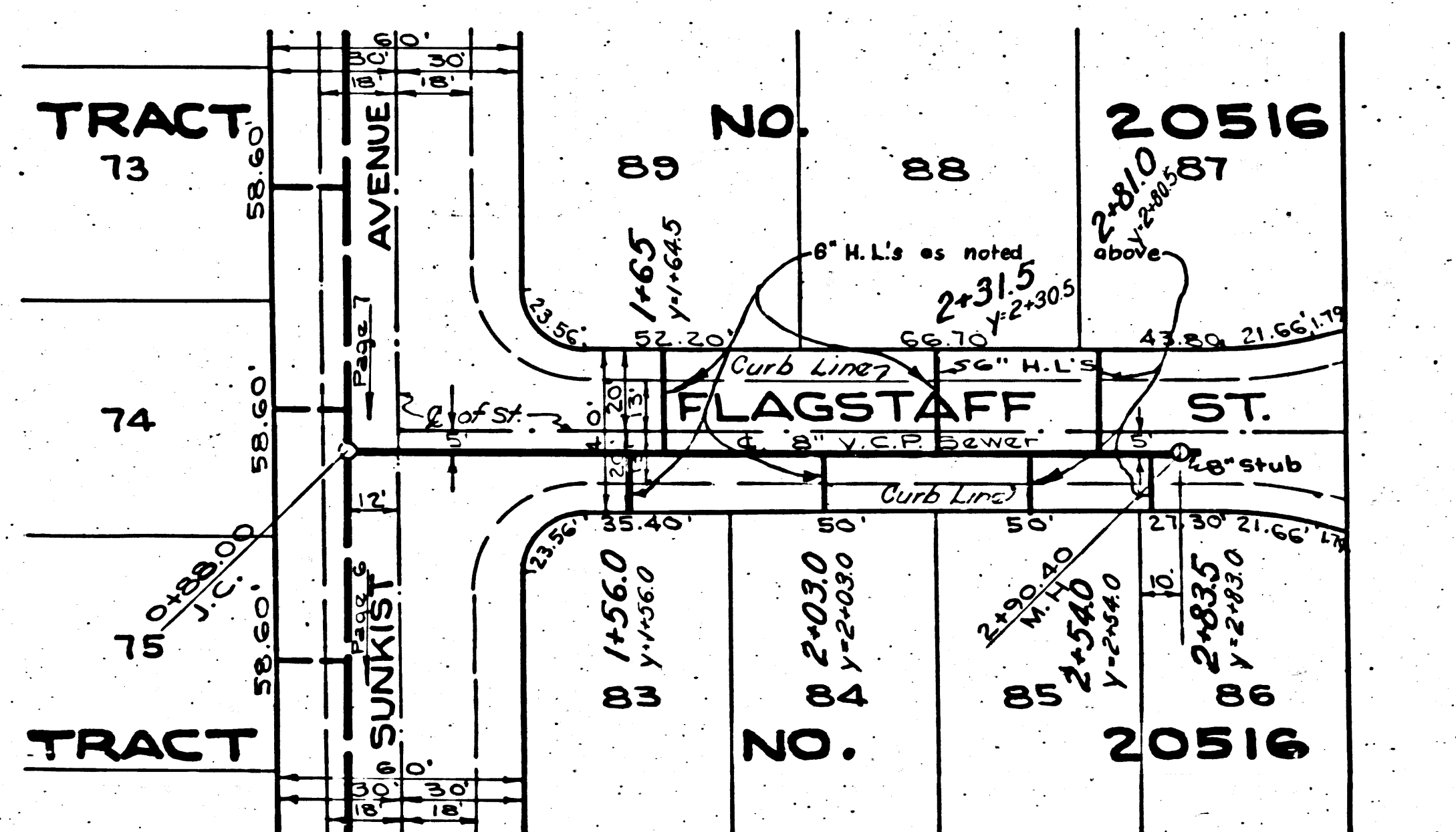
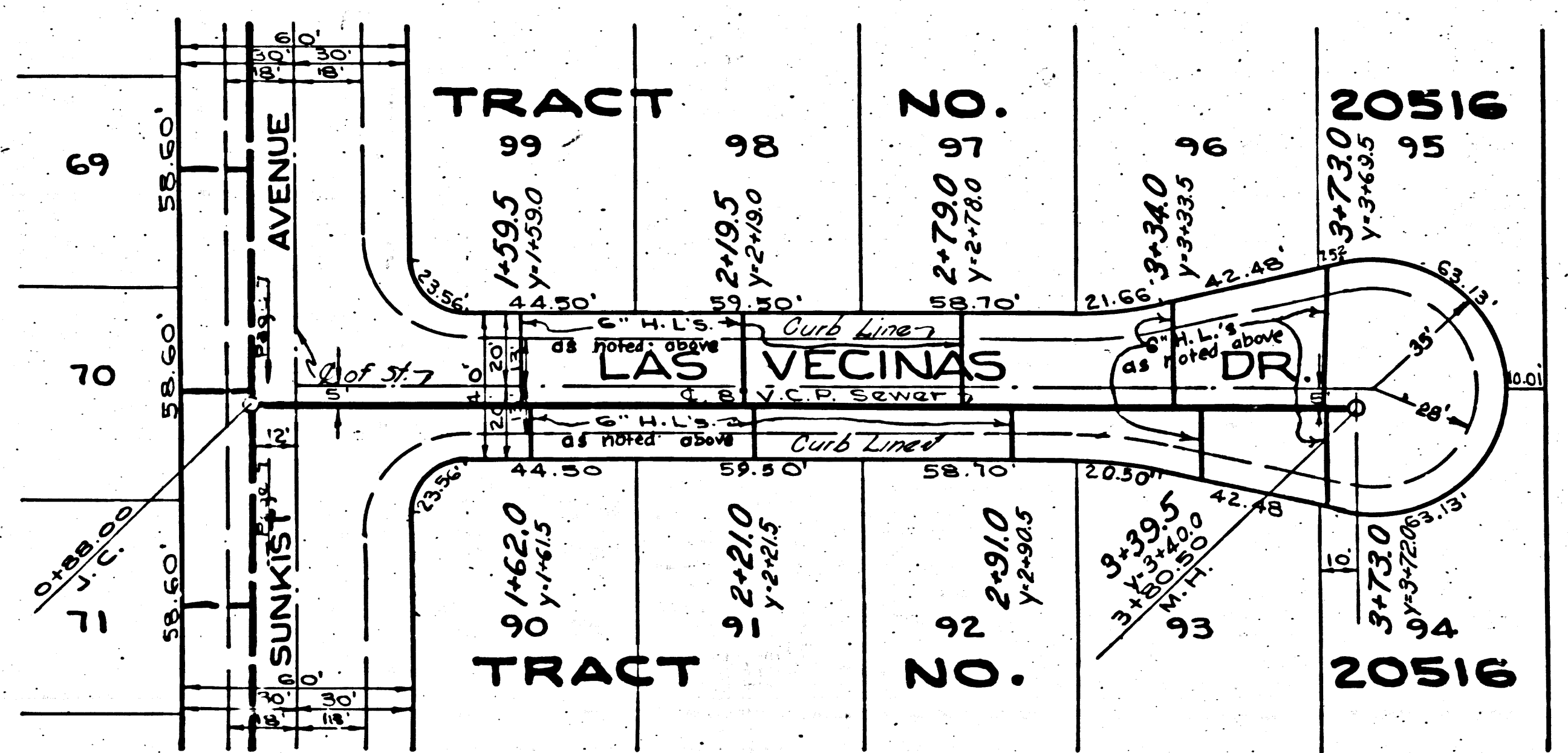
19,435



P.C. 3100
J.N. 0595.31
Page 8

NO CHARGE FOR CONNECTIONS

19,434

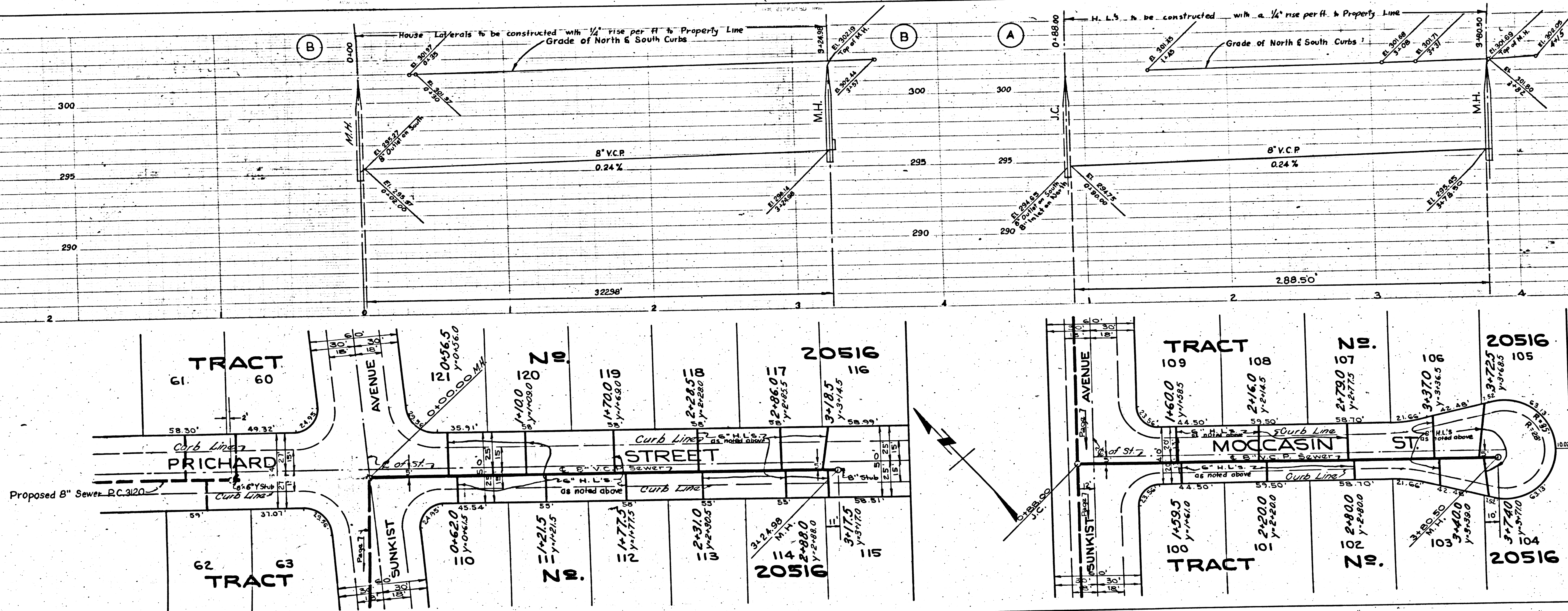


Trim Line

TRACT N 50216

1. N. 0552.31
B.C. 3100
P.C. 3100

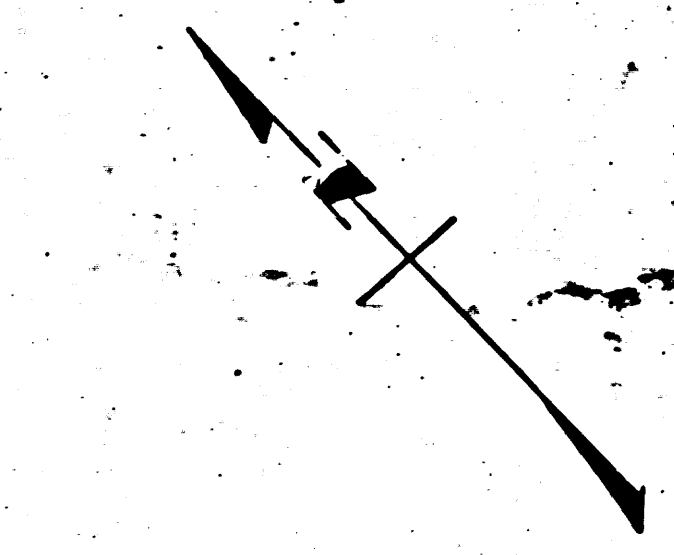
5



P.C. 3100
J.N. 0995.31
Page 9

NO CHARGE FOR CONNECTION

19,435



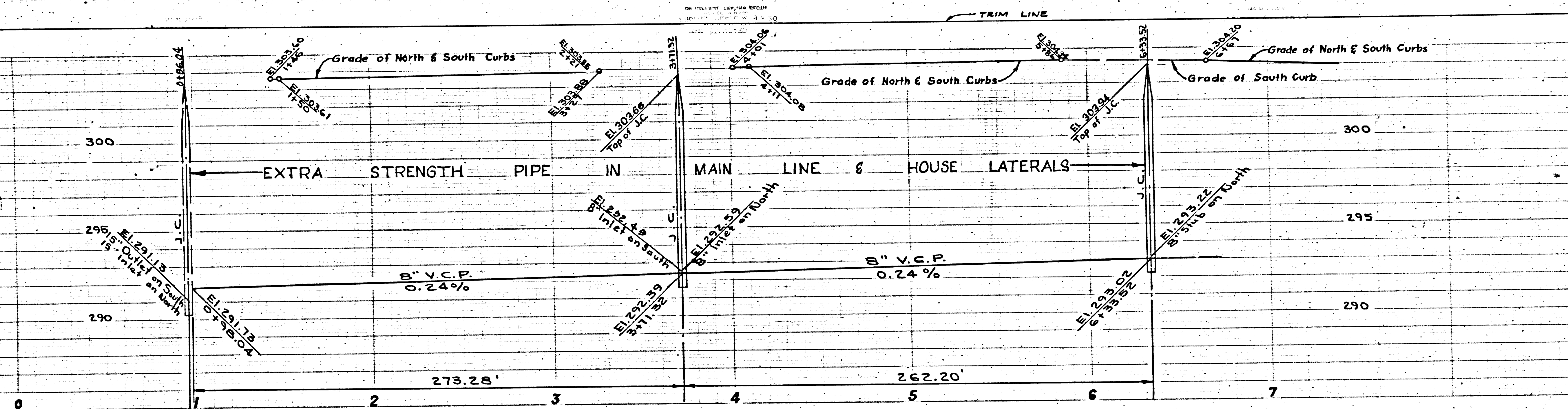
C. 3100
J.N. 0995.31
Page 11

FOR
SECTION

19437

10-11-54

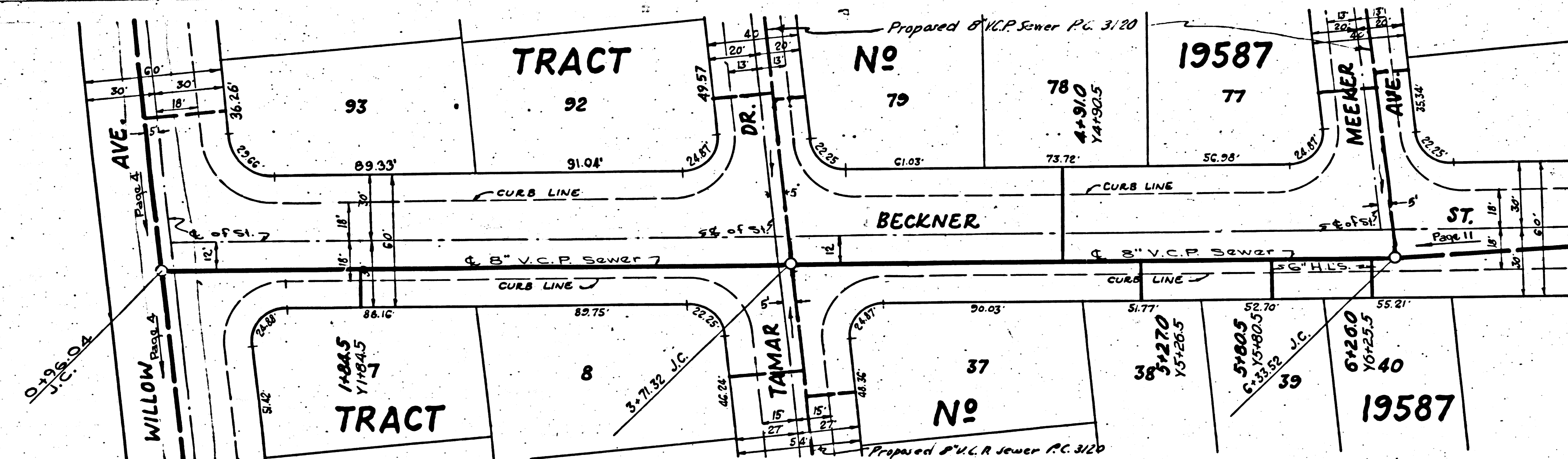
City Engineer



P.C. 3100
J.N. 0995.31
Page 10

NO CHARGE FOR
CONNECTIONS

19436



IRVING SOEIG

Rel.

P.C. 3100
J.N. 0995.31
Page 12

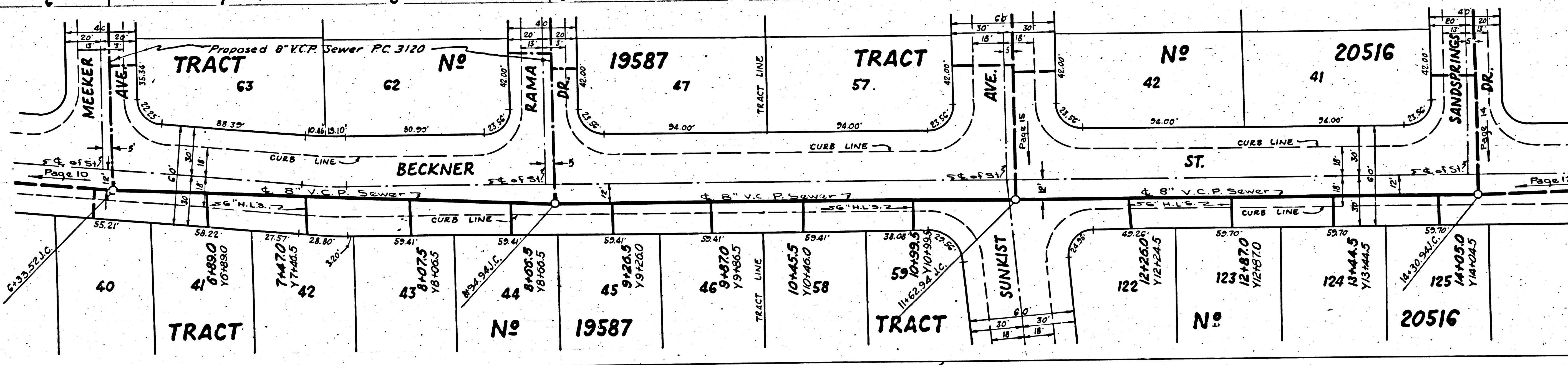
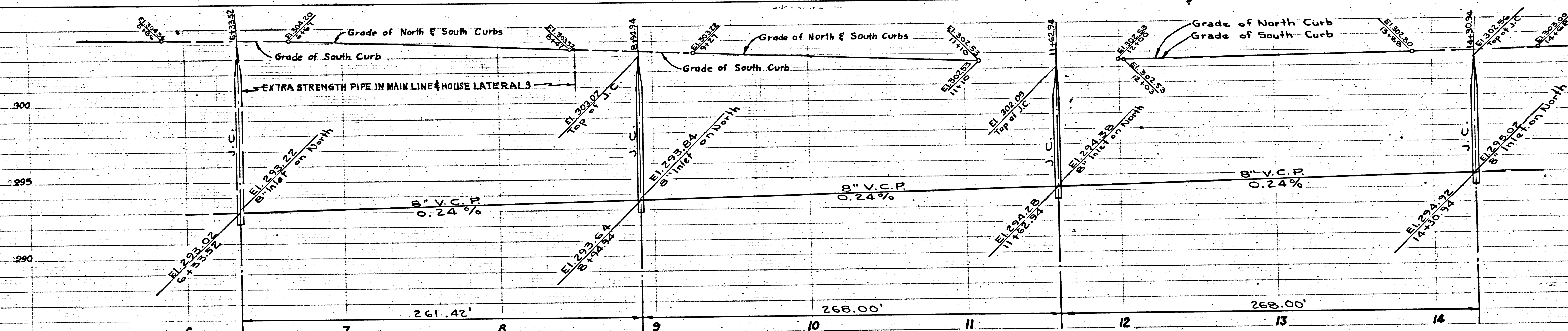
CHARGE FOR
CONNECTIONS

19438

P.C. 3100
J.N. 0995.31
Page 11

NO CHARGE FOR
CONNECTION

19437



REVISED DATE 10-15-52
Map here attached
from Rama Dr. to
Sand Springs Dr. incl.
Approved: *[Signature]*
Office of County Engineer

10-15-54
[Signature]
City Engineer

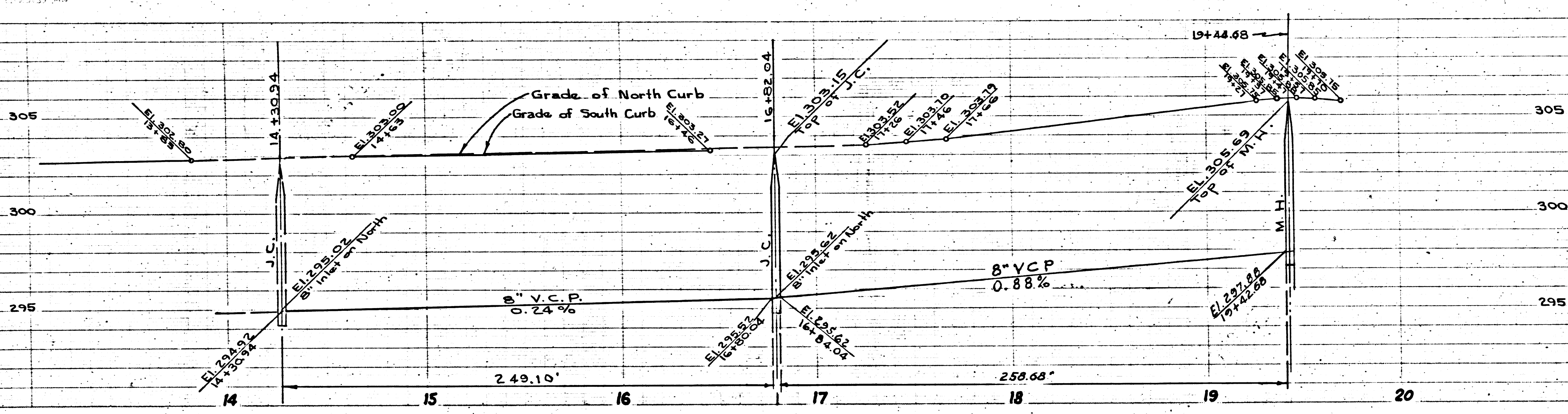
P.C. 3100
J.N. 0995.31
Page 13

NO CHARGE FOR CONNECTIONS

19439

DATE: 10-15-54

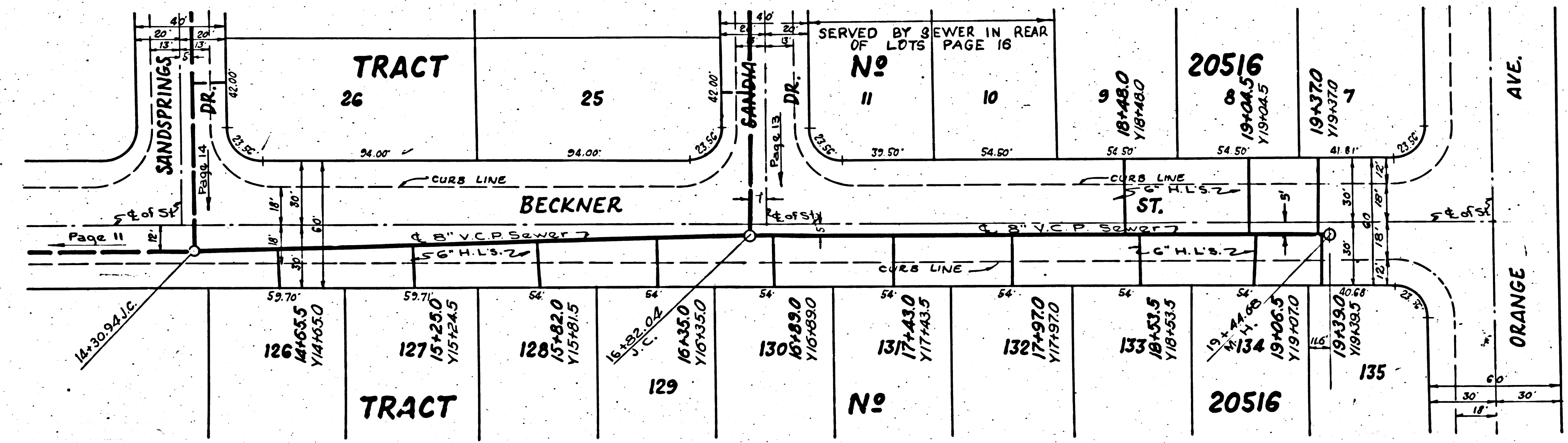
County Engineer



P.C. 3100
J.N. 0995.31
Page 12

NO CHARGE FOR CONNECTIONS

19438

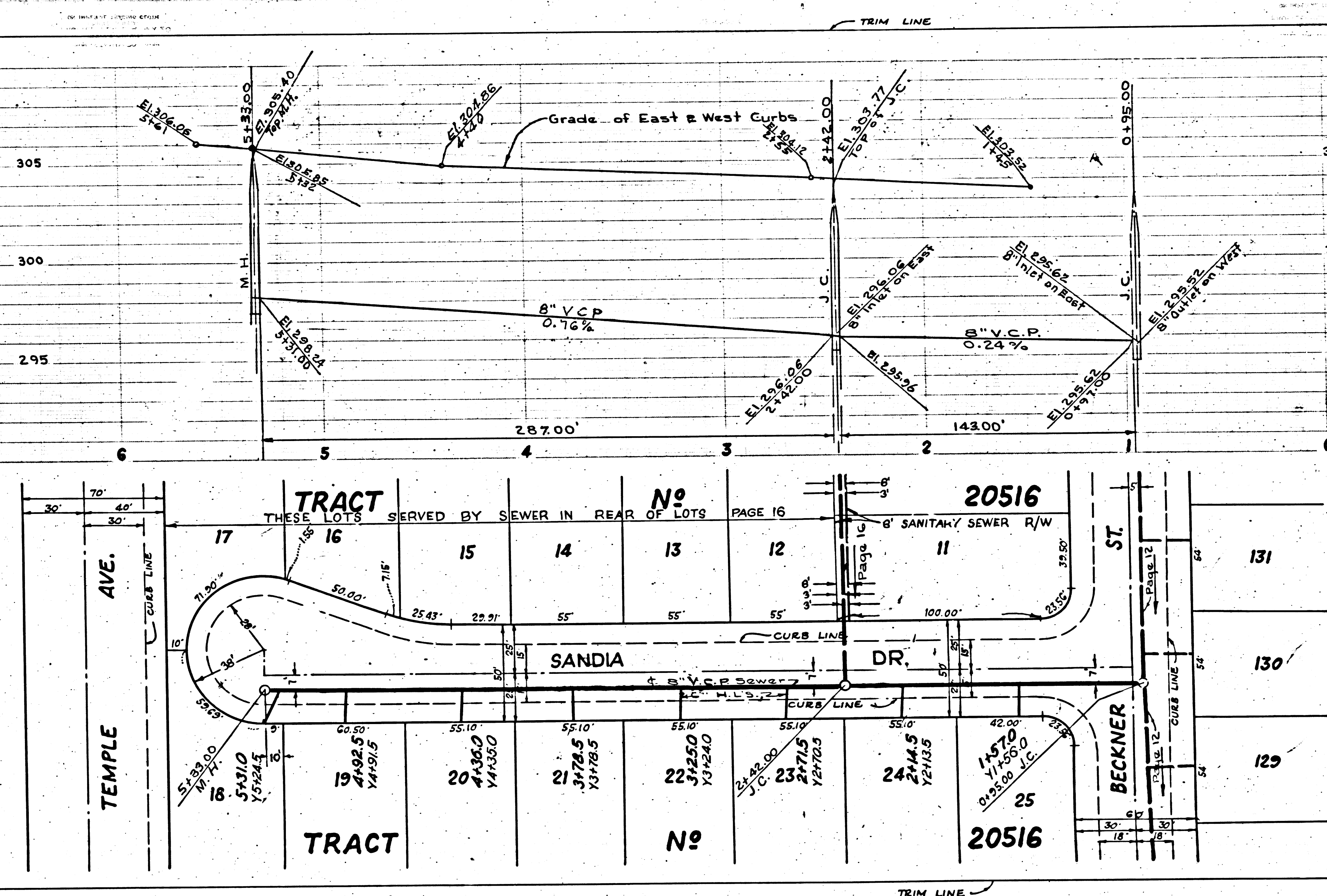


REVISED DATE 10-15-54
Man hole stations
from Sand Springs Dr.
to Orange Ave. incl.
Approved: [Signature]
Office of County Engineer

TRACT 1630212

PC 3100

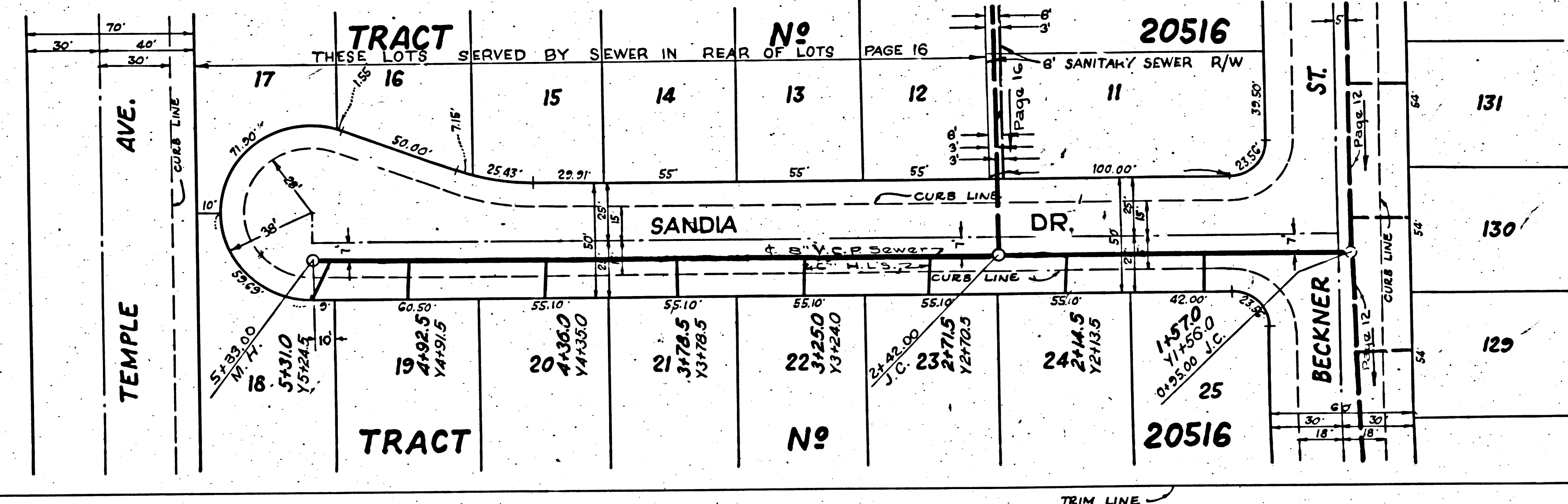
PC 3100



PC 3100
 J.N. 0995.31
 Page 13

NO CHARGE FOR CONNECTIONS

19439



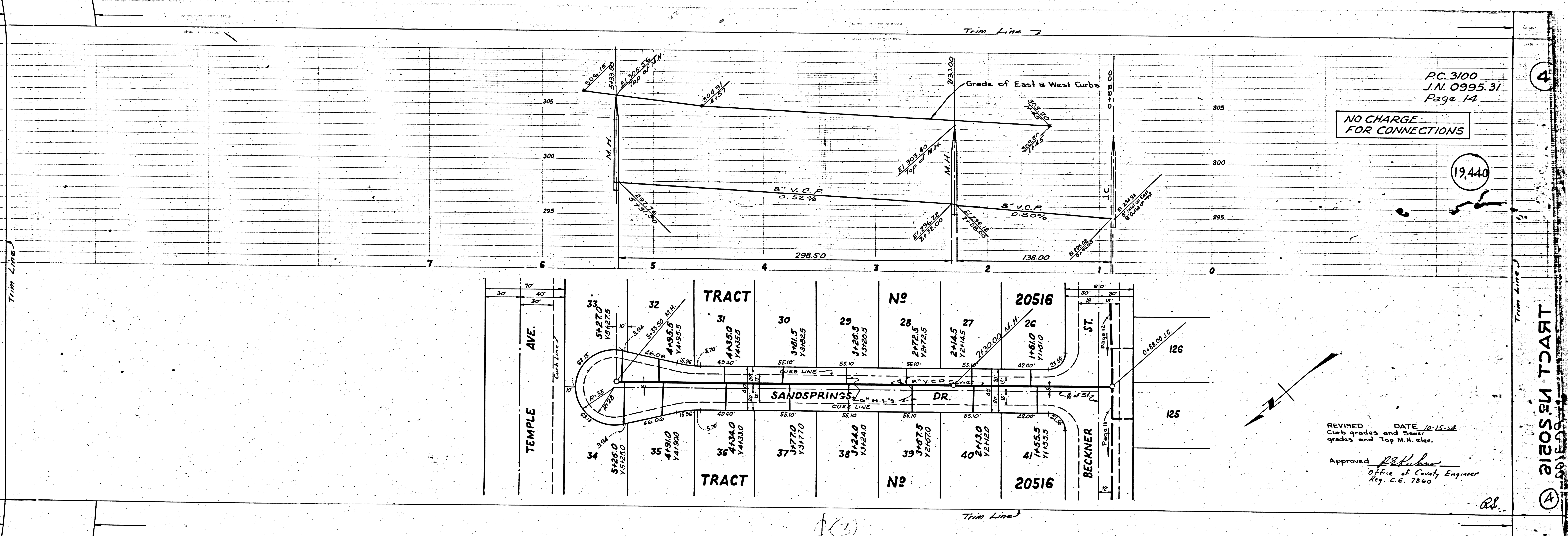
REVISED DATE: 10-15-54
 Curb grades and Top of Man Hole elevations.

Approved: *[Signature]*
 Office of County Engineer

5.31
5

FOR
5

9,441



P.C. 3100
J.N. 0995.31
Page 14

NO CHARGE
FOR CONNECTIONS

19,440

REVISION DATE 12-15-34
Curbs grades and Sewer
grades and Top M.H. elev.
Approved [Signature]
Office of County Engineer
Reg. C.E. 7860

TRACT No 20516

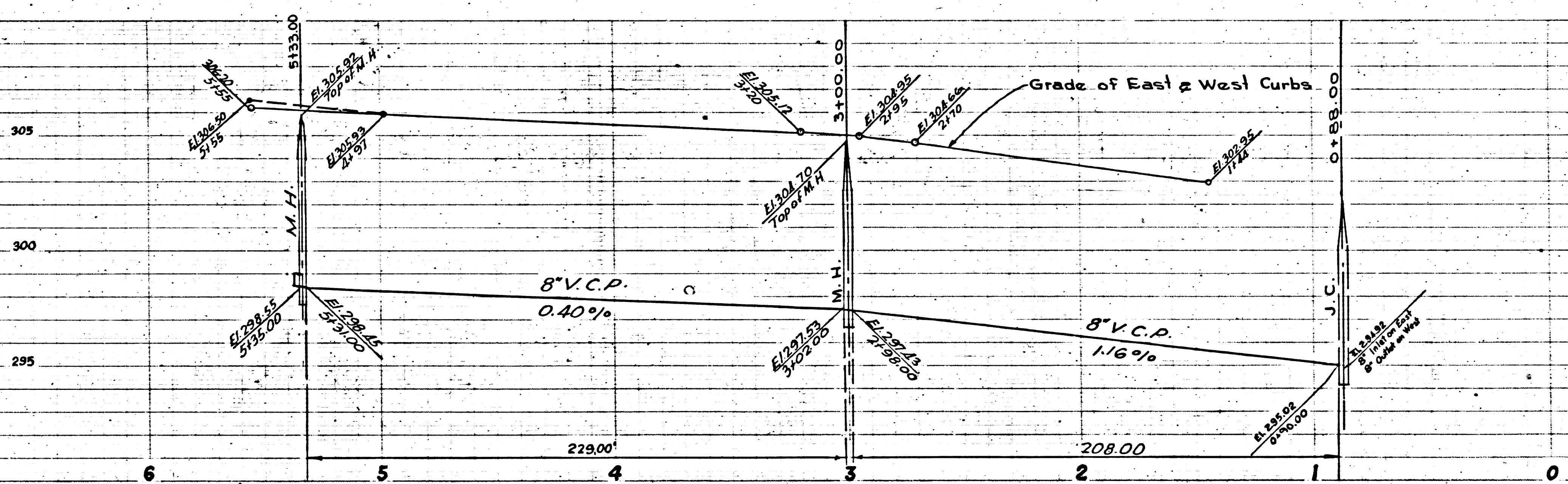
4

5.31

DR

19,442

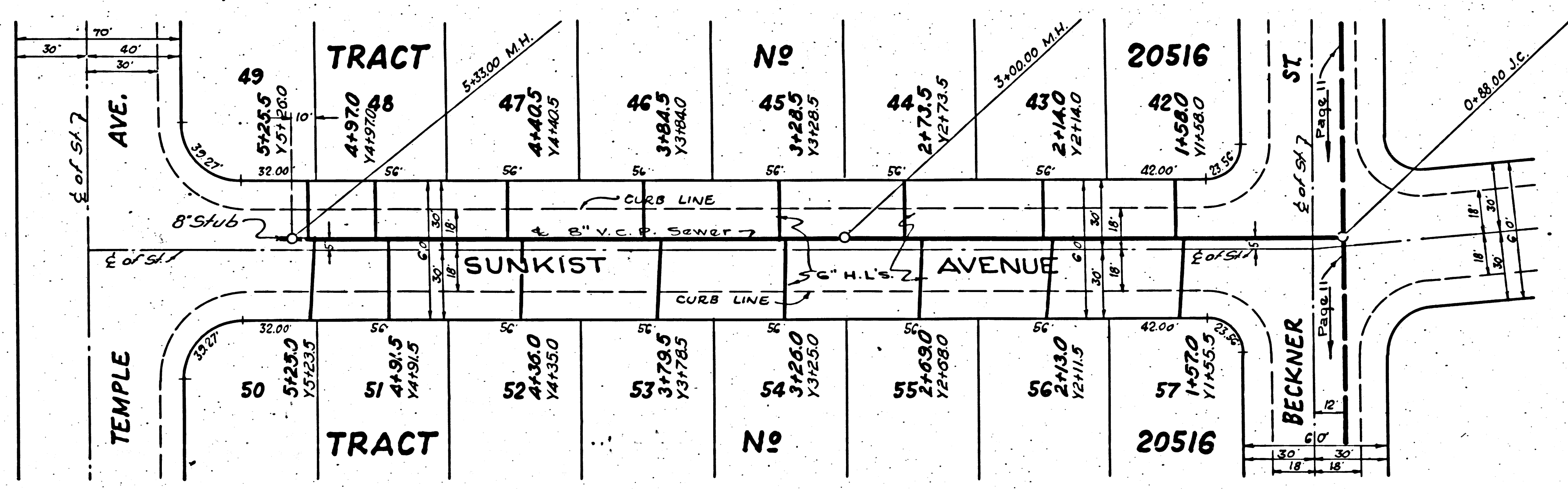
Trim Line



P.C. 3100
I.N. 0995.31
Page 15

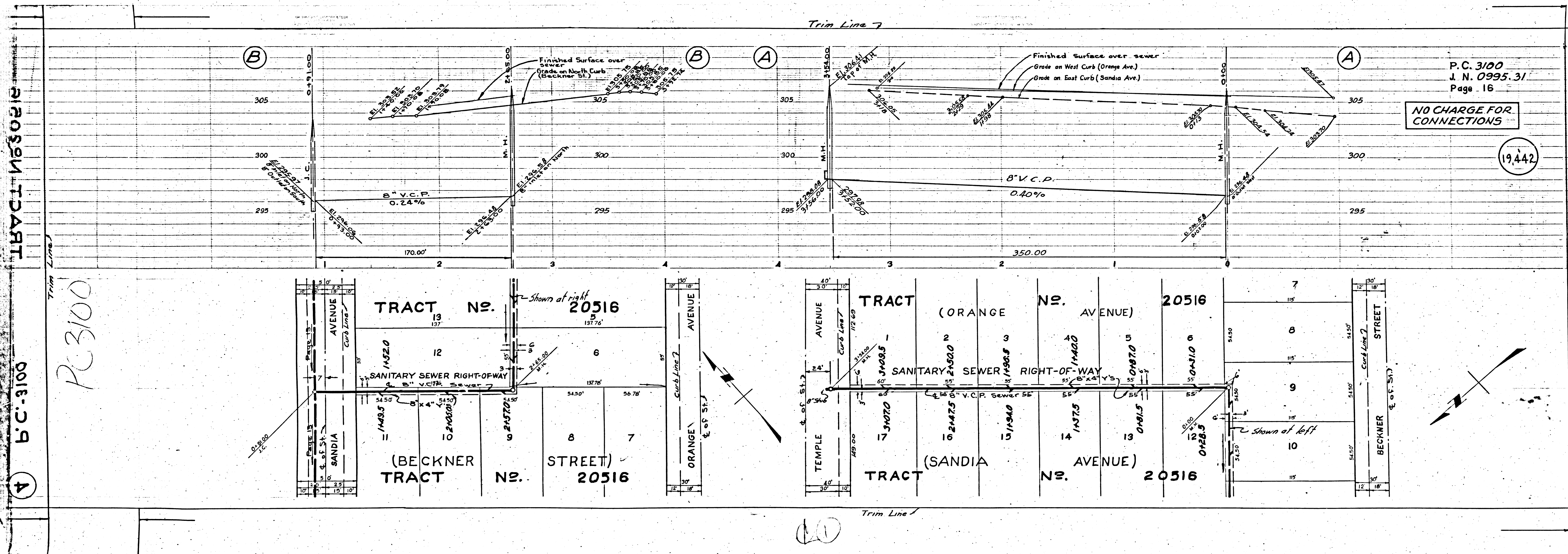
NO CHARGE FOR CONNECTIONS

19,441



Trim Line

19



P. C. 3100
 J. N. 0995.31
 Page 16

19,442

TRACT NO. 3100

P.C. 3100

10