

P.C. 3101  
Page 1.

20,053

16'	125.59	111.70	111.47	00042
15'	124.68	110.47	109.99	00010
15'	123.04	109.09	108.51	00026
15'	122.00	108.84	108.84	00014
15'	120.81	108.51	108.51	0
8'	127.59	117.34	117.41	00122
8'	126.14	116.74	116.64	00067
8'	126.49	115.11	115.11	
8'	119.20		106.97	
8'			106.12	

MANHOLE ELEVATION FROM DAFFOD JONES & WHITE SURVEY - 8-18-1954  
DATUM NOTE - B.M. ESTABLISHED FROM STANDARD BRASS DISK STAMPED "A-33-1920" SET IN TOP OF SMALL GRANITE POST LOCATED ON S.R.R. ABUTMENT, 0.4 MILES N.W. FROM FIRESTONE BOULEVARD, ABOUT 90' N.W. OF THE R.R. STATION. ELEV. OF THE NEAREST RAIL ELEVATION = 135.424 PER C.S.F.A. 1206-11-1952 (U.S.G.S. DATUM)

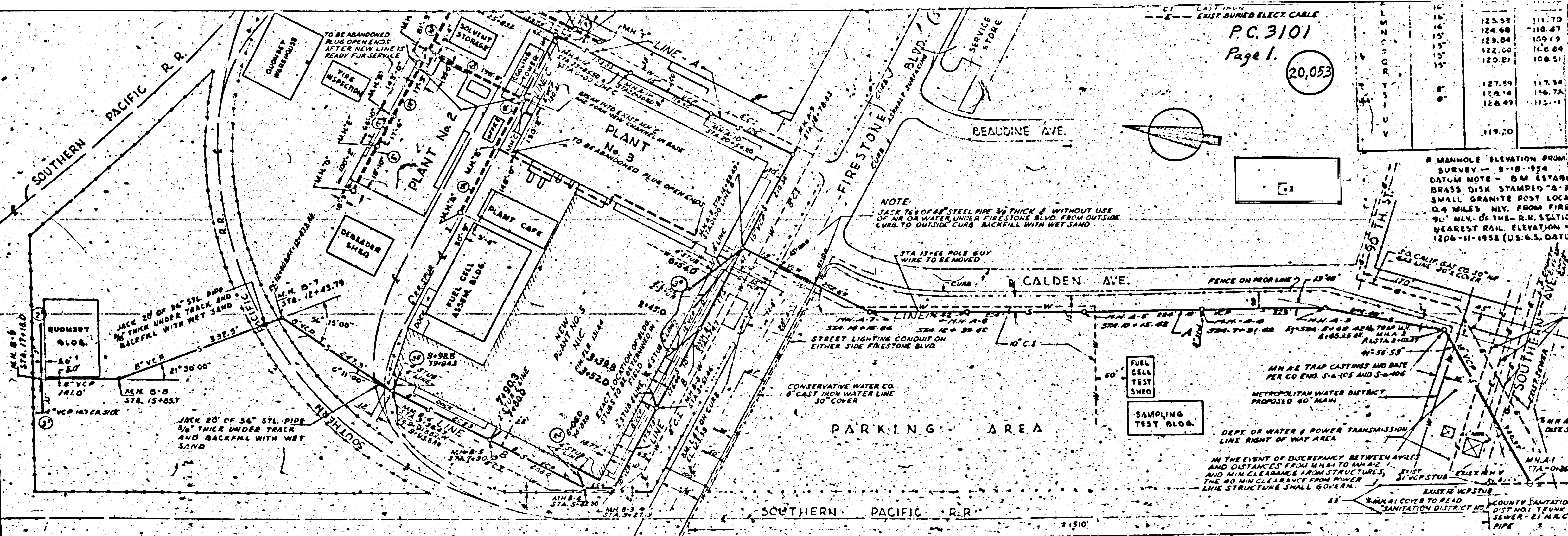
NOTIFY AND OBTAIN PERMISSION FROM THE CITY OF SOUTH GATE BEFORE TREACHING ACROSS SOUTHERN AVE

BURIED ELECTRICAL CABLE NOTIFY LOS ANGELES DEPT. OF WATER & POWER BEFORE TREACHING

NOTIFY AND OBTAIN PERMISSION FROM COUNTY SANITATION DIST. NO. 1 BEFORE BREAKING INTO TRUNK SEWER

MANHOLE CONSTRUCTED PER C.S. SANITATION DIST. NO. 1 TRUNK SEWER - 27" R.R.C. PIPE

PEER ENGINEERING & ARCHITECTURE  
 PLANNING, ARCHITECTURE  
 11111 S. GARDEN ST. LOS ANGELES, CALIF. 90047



**NOTES**

- ALL SEWER MAINS TO BE EXTRA STRENGTH VITRIFIED CLAY PIPE
- ALL SERVICE LINES FROM BLDG. TO MAIN TO HAVE MIN. SLOPE OF 8%
- ALL SERVICE LINES FROM BLDG. TO MAIN TO BE VITRIFIED CLAY PIPE
- ASPHALT OR CEMENT CONCRETE SURFACES CUT BY SEWER TRENCH SHALL BE PATCHED WITH IDENTICAL SURFACE AND BASE MATERIAL OF SAME THICKNESS AS EXIST. SURFACE AND BASE. PATCHED SURFACE SHALL MEET GRADE AND SLOPE OF EXIST. SURFACE.
- ALL MAN HOLES SHALL BE LOS ANGELES COUNTY ENGINEERS STANDARD NO. 5-104. MAN HOLE COVERS SHALL BE L.A. COUNTY ENGINEERS STD. NO. 5-112 (K.L.E. ACTS. IN PLAN)
- SPECIFICATIONS SHALL BE LOS ANGELES COUNTY ENGINEERS STANDARD SPECIFICATIONS FOR SANITARY SEWERS WITH SPECIAL PROVISIONS AS PROVIDED.
- USE CEMENT MORTAR FOR ALL VITRIFIED CLAY PIPE JOINTS
- ENCASE 6" OF SEWER LINE AT POINTS OF PIPE REFERENCE WITH POLES AS PER CC. ENGR. 5-6-113.
- MAN HOLE TOPS IN UNIMPROVED AREAS TO BE 6" ABOVE GRADE
- FOR ALLOWABLE LEAKAGE TEST USE FORMULA NO. 1, C.O. ENGS. SPECS., SEC. 34.

ALAMEDA AVE  
 FIRESTONE BLVD  
 BEAUDINE AVE  
 CALDEN AVE  
 SOUTHERN PACIFIC R.R.

PLANT NO. 5  
 ALAMEDA & FIRESTONE BLVD  
 LOS ANGELES, CALIF.

REF. DVGS.  
 P.P.E. LINES A, B & C. DVG. NO. 5-2

SANITARY SEWER SYSTEM  
 ADDITION TO EXISTING FACILITIES  
 PLAN  
 LINES A, B & C

REVISION 4

DESIGNED BY KELLY  
 DATE 6-15-54  
 SCALE 1"=100'

CHECKED BY ROSIER

EXTENDED LINE B STA. 9+00.00 TO STA. 10+00.00 ADD 8" MAN HOLE, 8'-0" DIA.	CHANGED LOCATION OF MANHOLE ON LINE A FROM STA. 10+00.00 TO STA. 10+00.00	CHANGED LOCATION AND GRADES OF LINE A FROM MANHOLE 1 TO MANHOLE 2 KCK	CHANGED LOCATION AND GRADES OF LINE A FROM EXIST. MANHOLE TO MANHOLE 3 KCK
---	---	--	---