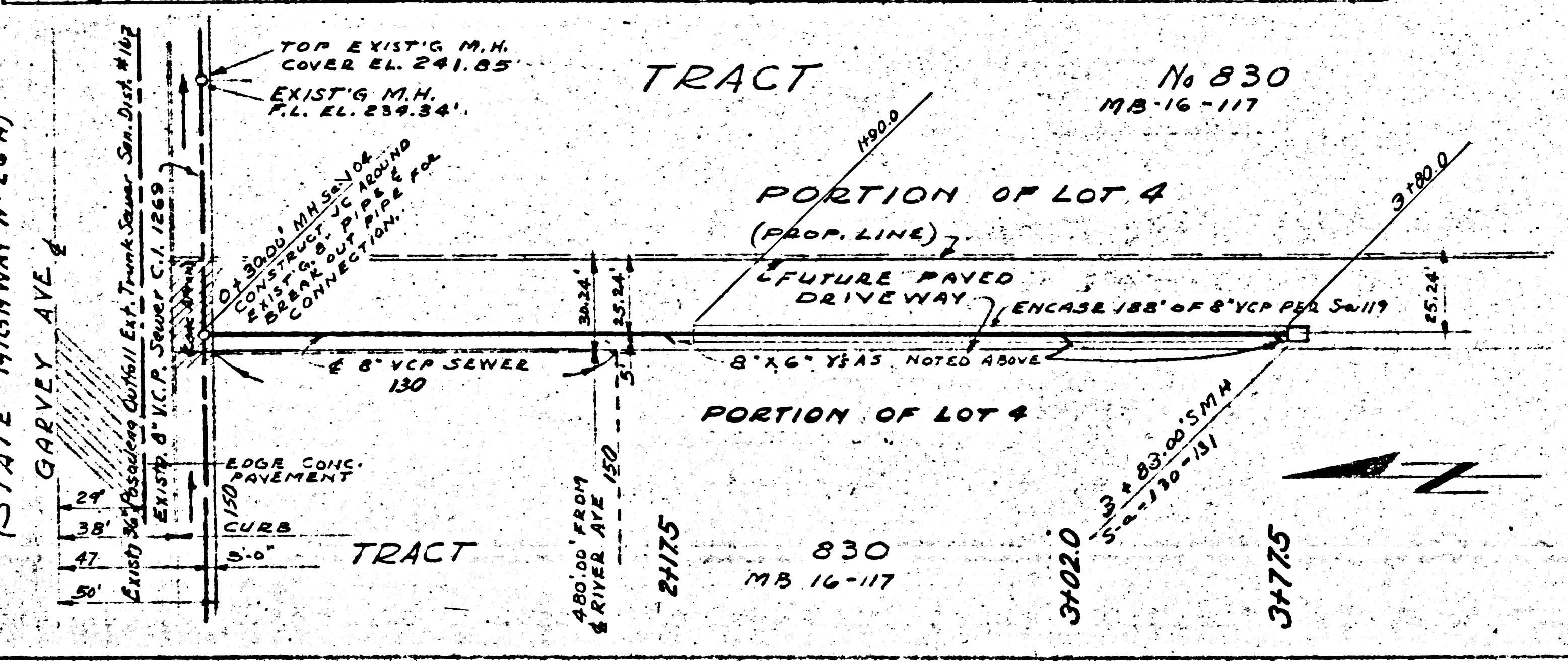


PC.3110
(STATE HIGHWAY N.E.G.A.)
GARVEY AVE

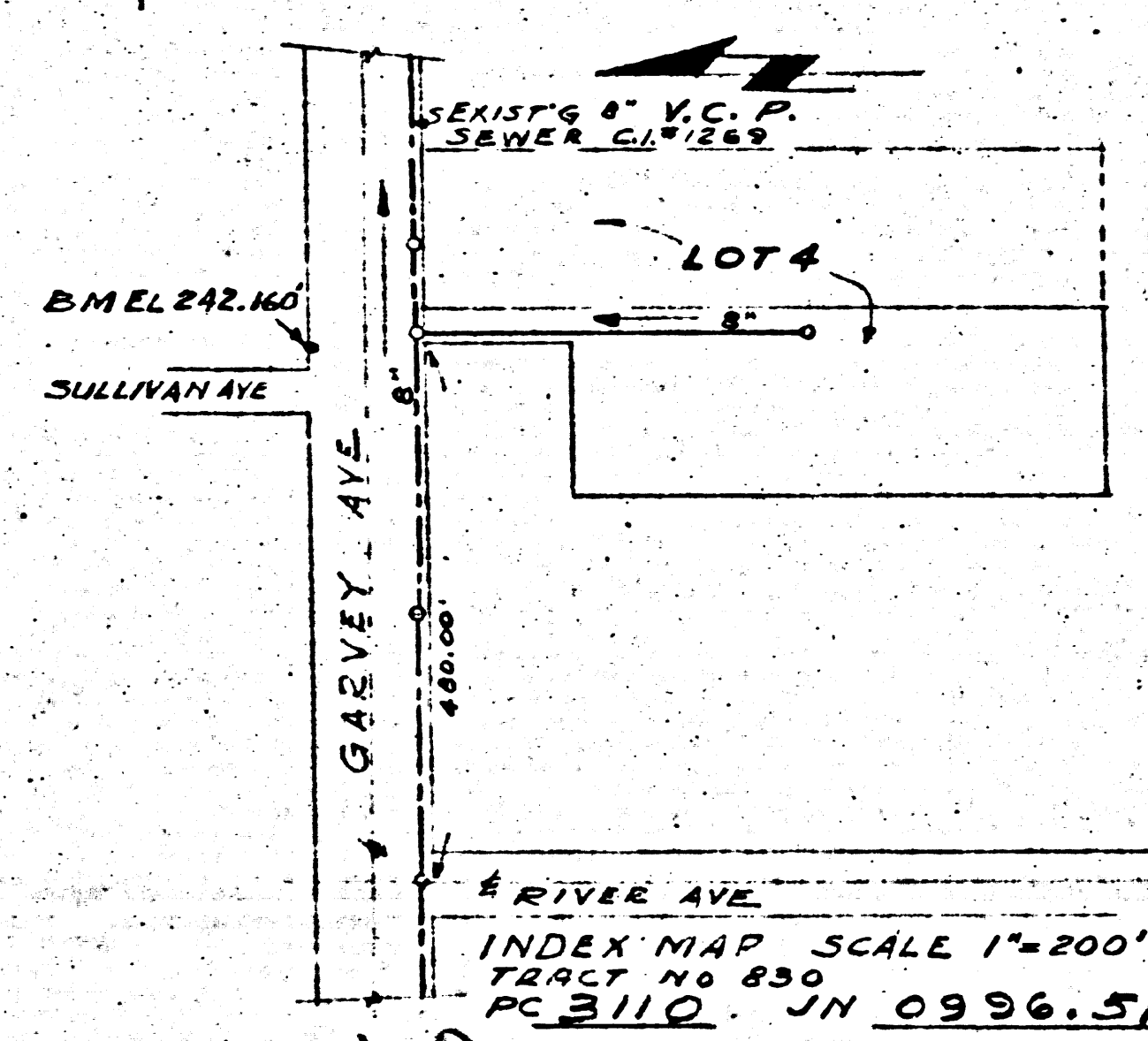


TRIM LINE
TEMPLE CITY BLDG. DIST. No 5

NOTE
Provide stakes on prop. lines or prop. lines produced at right angles to sewer line of the center line of each manhole.
No representative of the Co. Eng. will survey or layout any portion of the work. The owner or his authorized rep. shall furnish the Co. Eng. with grade sheets and 3/4\"/>

1. Use sp'd manhole frames & covers S-a-117, except as noted.
2. Use sp'd strength pipe except as noted.
3. Use cement mortar for all vit. clay pipe joints.
4. Resurface all trench within paved area to meet L.A. Calroad Dept. or Calif. State Highway Dept. requirements in accordance with permit.
5. Encase 4 ft. of sewer at interference points with pipe S-a-119.
6. All structures shall be brick sewer structure S-a-100 except as noted.
7. Manhole tops in unimproved right-of-ways to be 6\"/>
- 8. For allowable leakage tests, use formula no. 1, Specs. Sec. 51.

B.M. W.M. 301 EL. 242.160 C.S.F.B. 1412 P.G.6
GARVEY & SULLIVAN AVE. N.E. CORNER.
BT. S.P.K. IN CURB 6' EAST OF E. END
CURB RETURN.



SHEETS	PAGES
1	1

NO CHARGE FOR CONNECTIONS

PROFILE, ALIGNMENT & GRADE
SANITARY SEWERS
TO BE CONSTRUCTED ON
A PORTION OF LOT 4 TRACT 830
COUNTY OF LOS ANGELES

PC.3110
J.N. 0996.51
PAGE - 1

18,864

PRIVATE CONTRACT No. 3110
W.S.-37
SHEET 1 OF 1 SHEET
VERT. 1"=4'
SCALE HORIZ. 1"=40'
DATE JULY 1954
PREPARED IN THE OFFICE OF
E. ZEPPELIN - SPRINGE
BY E. ZEPPELIN - SPRINGE
REG. C.E. No. 4635
For legend, see plan. No S-a-64

NOTE
Grades to which this improvement is to be constructed are shown on plans & profiles. Grade points for the curves & of streets, alleyways are shown by circles on profiles. At all points between designated points the grade shall be established so as to conform to a straight line drawn between said designated points.
Elevations are in feet above USGS datum or mean sea level.
Work shall be constructed according to specifications on file in the office of Co. Engineer and shall be prosecuted only in the presence of the Co. Engineer.
Before work can be started, the contractor must obtain a permit to excavate in county streets from L.A. Co. Road Dept, 108 W. 2nd St. & make deposit with the Co. Engineer 75¢ L.A. Co. Engineering Bldg. Sufficient to cover the cost of Construction Inspection & related plans.
Approval of this plan by the County of Los Angeles, does not constitute a representation as to the accuracy of the location of, or the existence or non-existence of any underground utility, pipe or structure, within the limits of this project.
If work is to be done in a state highway, a permit must be obtained from the STOPS of Calif. Div. of HIGHWAYS, 120 W. SPRING ST. City of Los Angeles.
This drawing & the data hereon are hereby made a part of the Specifications
COUNTY OF LOS ANGELES, CALIFORNIA
APPROVED: WILLIAM J. FOX, CO. ENG. APPROVED: A.M. RANNEY
CHIEF ENR. CO. SAN. DIST. No. 12
BY [Signature] OFFICE ENG.
CHECKED BY [Signature] OFFICE ENG.
APPROVED [Signature] CHIEF ENR. REG. C.E. NO. 4635
INDUSTRIAL WASTE DIVISION

INDEX MAP SCALE 1"=200'
TRACT No 830
PC.3110 J.N. 0996.51
checked 8-24-54 W. J. Fox