

B.M. L.Q. 657-4 B.M. 150 Elev. 39.76
 4.2' N. in South Curb of Guit Ave.
 1' East of B.C.R. at Northeast cor.
 of Main St.
 Subtract 0.35' from elevations shown
 hereon to equal 3.V. datum.

LOMITA BLDG. DIST. No 7-L

NOTE:
 Provide stakes on the property lines or property lines produced at right angles to the sewer line at the center line of each manhole.
 No representative of the County Engineer will survey or layout any portion of the work.
 The owner or his authorized representative shall furnish the County Engineer with grade sheets and stations for all house laterals and Y branches and shall provide stakes for them at their proper locations with stationing plainly marked. Any change in location shall be requested in writing by the owner or his representative.
 No revisions shall be made in these plans without the approval of the County Engineer.

1. Use standard manhole frames and covers, S-a-117, except as noted.
2. Use standard strength pipe except as noted.
3. Use cement mortar for all vitrified clay pipe joints.
4. Resurface all trench within paved area to meet L.A. County Road Dept. or California State Highway Dept. requirements in accordance with permit.
5. Encase four feet of sewer at points of interference with poles, S-a-119.
6. House laterals to be constructed with inverts at property line G feet below curb grade except as noted.
7. All structures shall be brick sewer structures, S-a-104.
8. For allowable leakage test, use Formula No. L , Spec's., Sec. 51.

Manhole tops in unimproved Right-Of-Way to be 4" above finish grade before breaking into any existing structure
 and before final acceptance of this work,
 County Sanitation District should be notified
 in order that required inspection may be made.

Sheet	Pages
1	1-24

THIRD REVISION
 REVISED OUTLET INTO JOINT
 OUTFALL "D" TRUNK SEWER
 APPROVED *R. K. ...* 11-26-54
 OFFICE OF CO. ENGR. S.E. 117 7860

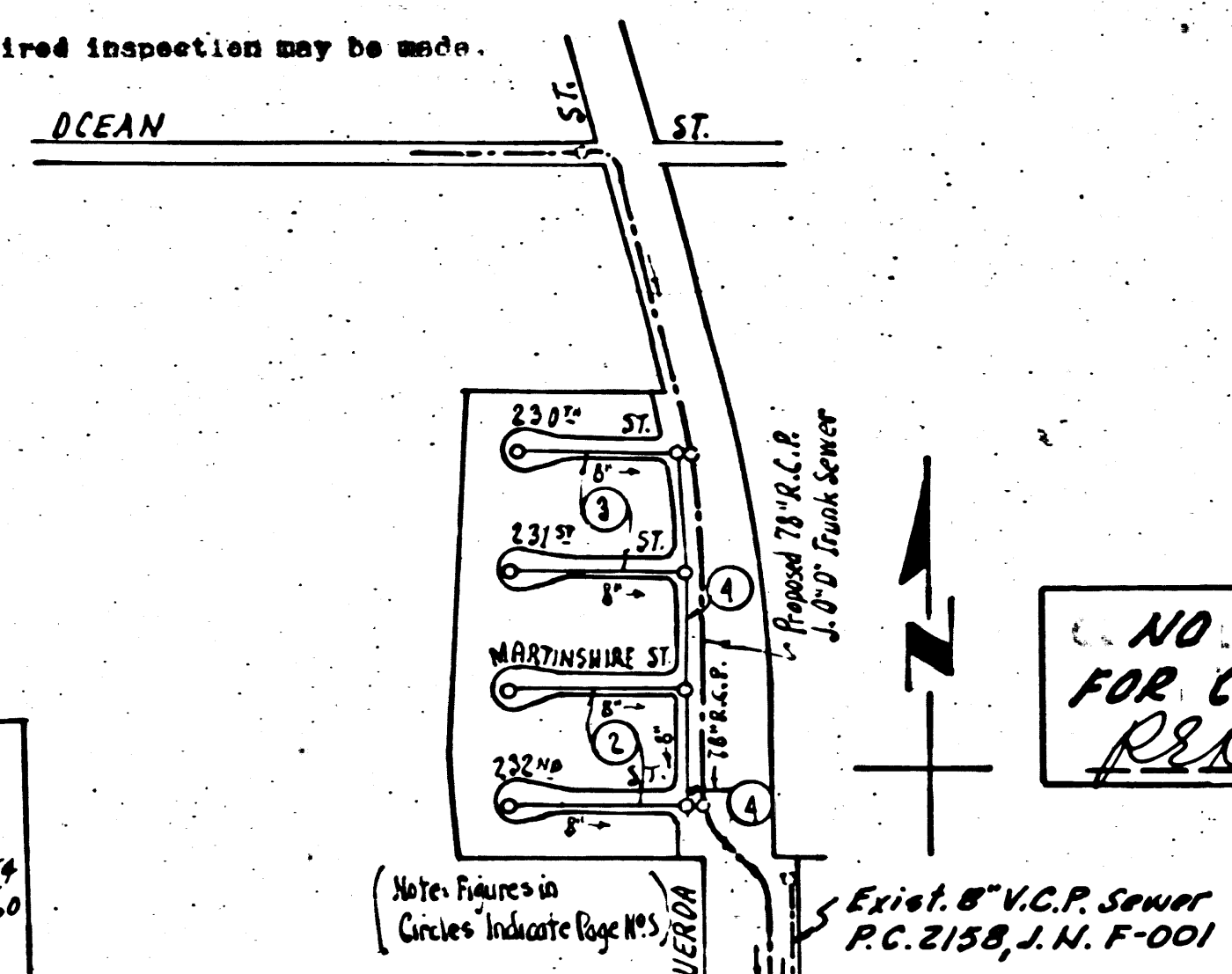
APPROVED CO. SAN. DIST. NO. 8
[Signature]

SECOND REVISION:
 OUTFALL INTO EXISTING
 8" SEWER - P.C. 2158
 APPROVED *R. K. ...* 10-13-54
 OFFICE OF CO. ENGR. S.E. 117 7860

VOID

VOID
 REVISED OUTLET INTO JOINT
 OUTFALL "D" TRUNK SEWER
 APPROVED *R. K. ...* 9-16-54
 OFFICE OF CO. ENGR. S.E. 117 7860

APPROVED CO. SAN. DIST. NO. 8
[Signature]
 OFFICE ENGINEER



NO CHARGE
 FOR CONNECTIONS
R. K. ... 8-17-54

PROFILE, ALIGNMENT AND GRADE OF
SANITARY SEWERS
 TO BE CONSTRUCTED IN

TRACT No 20318

PRIVATE CONTRACT NO. 3113
 W. S. 28
 ONE SHEET
 Scale: VERT. 1"=4' JULY 1954
 HORIZ. 1"=40'
 PREPARED IN THE OFFICES OF
CONLEY ENGINEERING CO.
H. G. Conley Reg. C. E. No. 5466
 FOR LEGEND SEE PLAN NO. S-a-64

NOTE:
 Grades to which this improvement is to be constructed are shown on plans and profiles. Grade points for top of curbs, center line of streets, or center line of alleys are shown by circles on profiles. At all points between designated points the grade shall be established so as to conform to a straight line drawn between said designated points.
 Elevations are in feet above U.S.G.S. datum or mean sea level.
 This drawing and the data hereon are hereby made a part of the specifications.
 Work shall be constructed according to specifications on file in the office of the County Engineer and shall be prosecuted only in the presence of the County Engineer.
 Before work can be started, the contractor must obtain a permit to excavate in County streets from the L.A. County Road Dept., 108 W. 2nd St. and make a deposit with the County Engineer, 733 L.A. County Engineering Building, sufficient to cover the cost of construction inspection and record plans.
 Approval of this plan by the County of Los Angeles does not constitute a representation as to the accuracy of the location of or the existence or non-existence of any underground utility, pipe, or structure within the limits of this project. This note applies to all sheets.
 If work is to be done in a State Highway, a permit must be obtained from the State of California, Division of Highways, 120 South Spring Street.

COUNTY OF LOS ANGELES, CALIFORNIA
 Approved, William J. Fox, County Engineer
 Approved, A. M. Rawn
 CHIEF ENGR. CO. SAN. DIST. NO. 8
[Signature]
 Sanitation Engineer
 Chief Office Engineer
 Checked By: *R. K. ...* 8-17-54
 Office of County Engineer, Reg. C. E. No. 7862

P.C. 3113
 J.N. 1100.01
 PAGE 1

(9741)

TRACT 20318

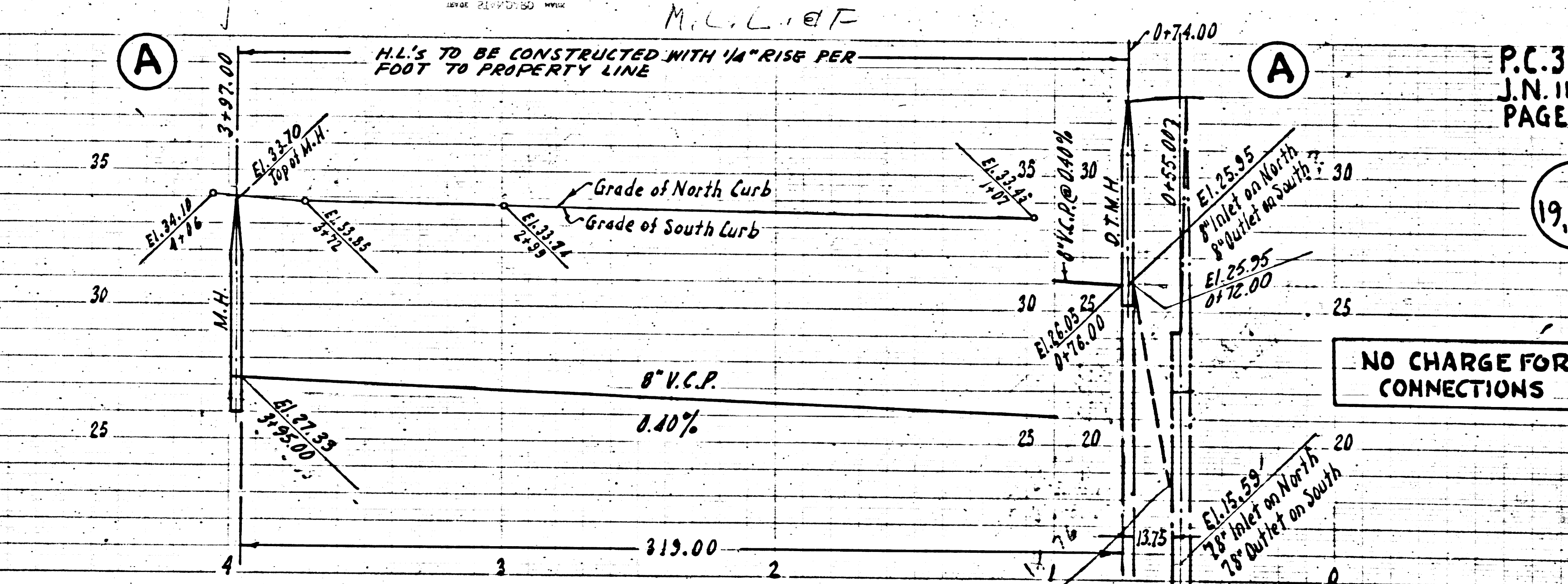
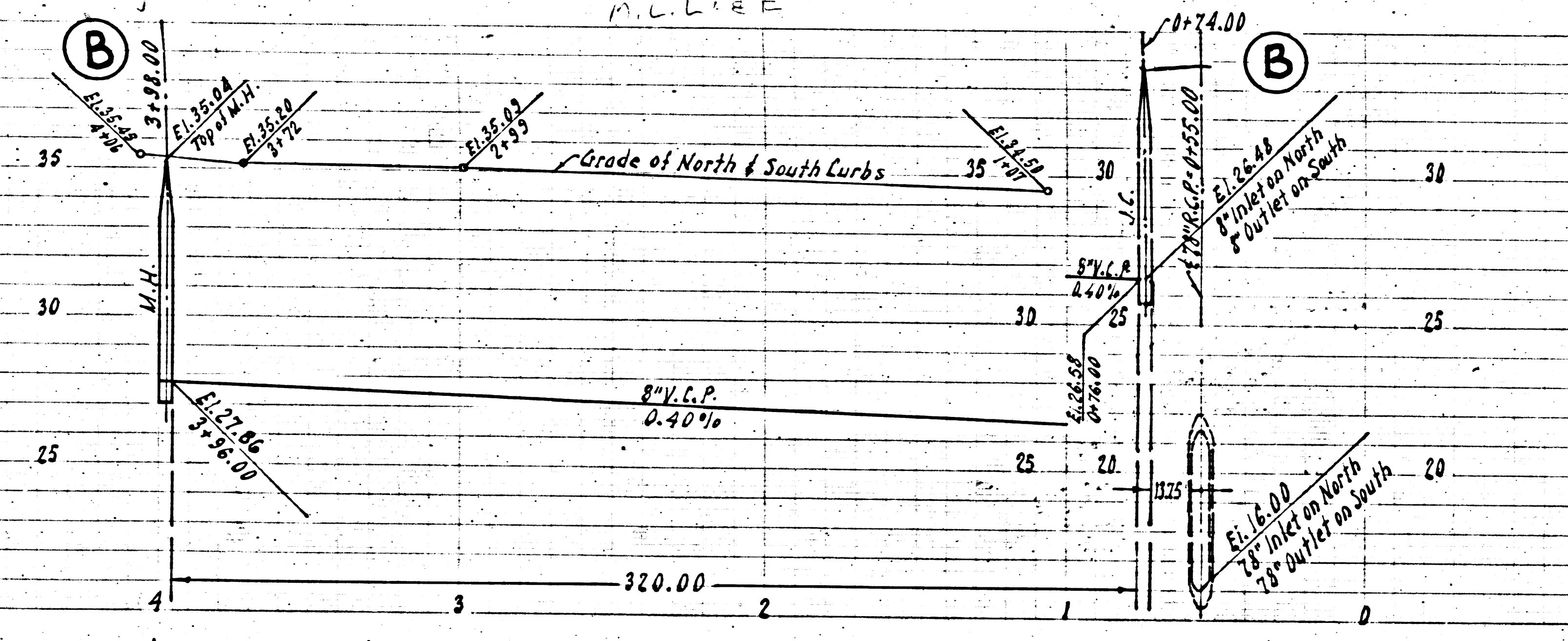
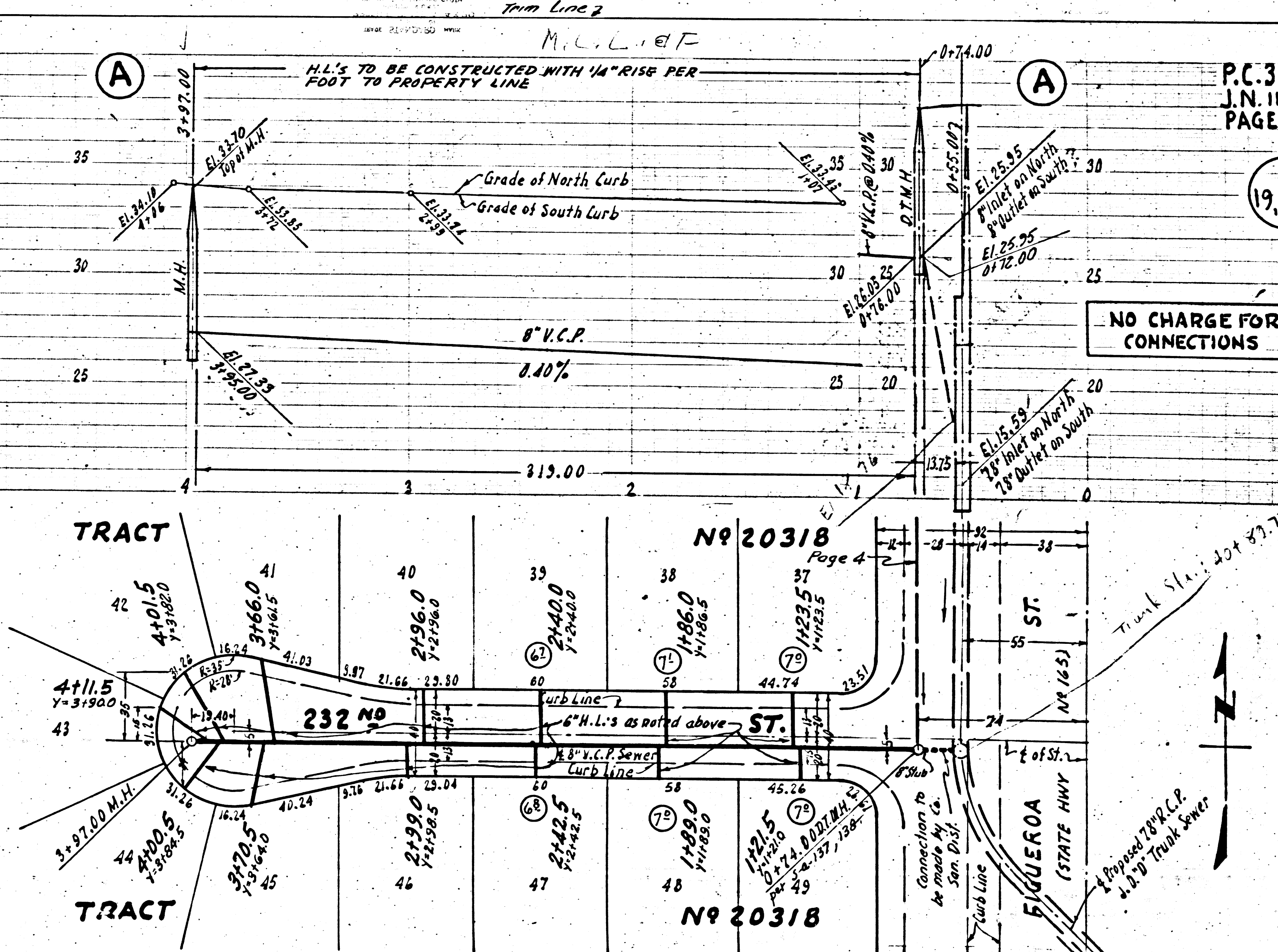
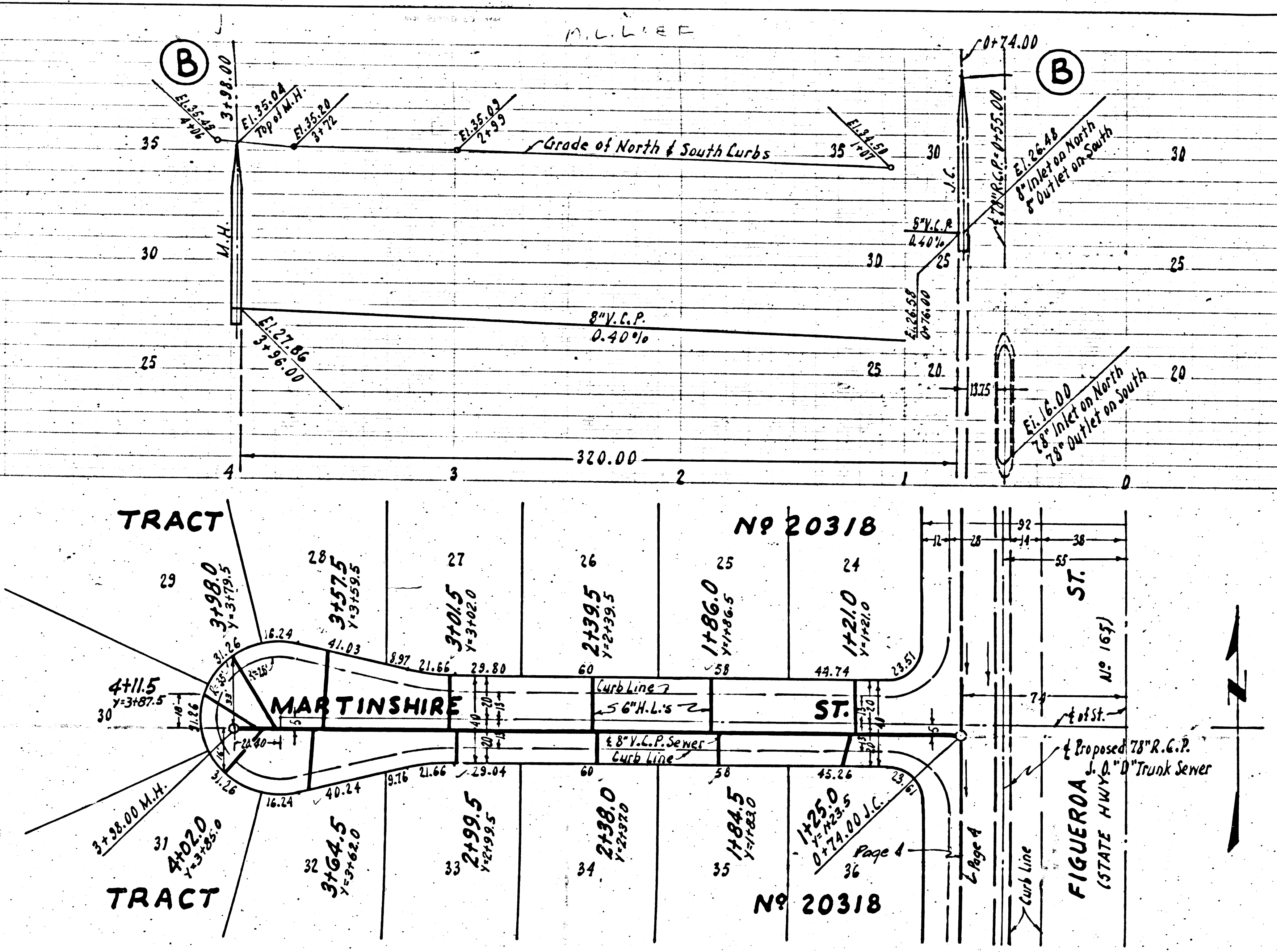
P.C. 3113
 J.N. 1100.01

checked 2-23-55 *W. L. ...*

A.R.C. 1127-7

INDEX MAP
 TRACT No 20318
 P.C. 3113
 J.N. 1100.01
 Scale 1"=400'

Trim Line



P.C. 3113
J.N. 1100.01
PAGE 2

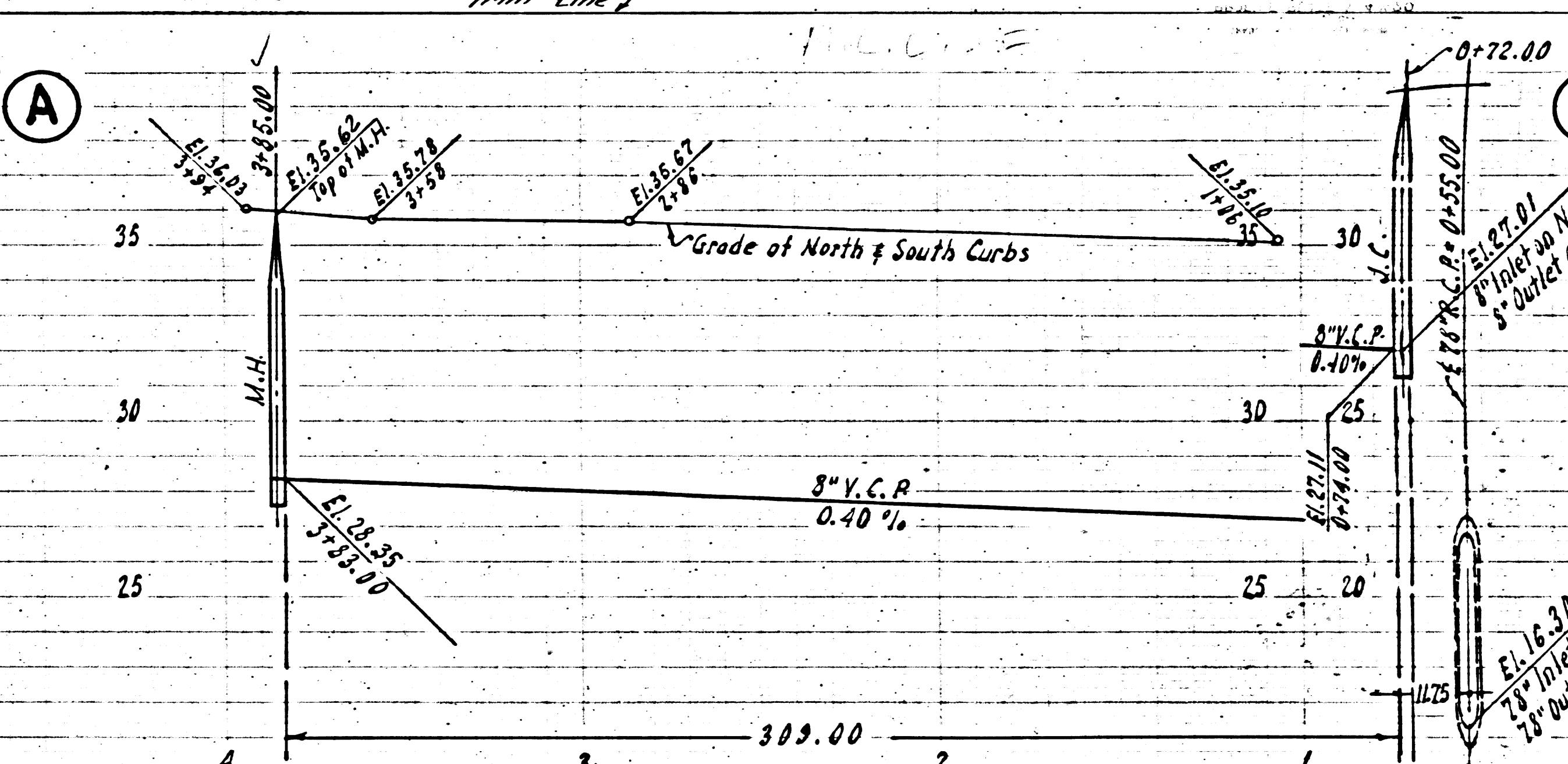
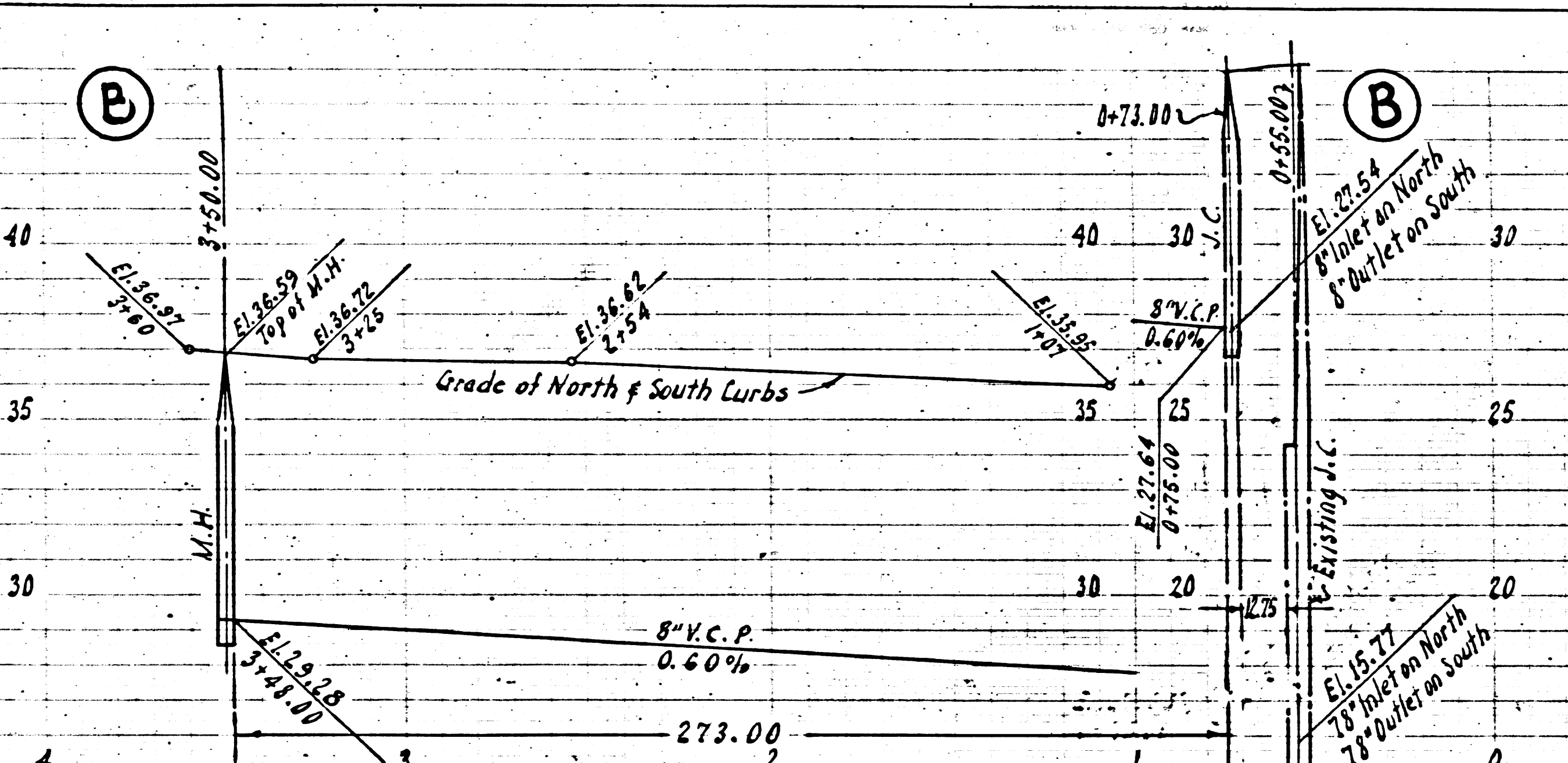
19,742

NO CHARGE FOR CONNECTIONS

3

13
00.01
4

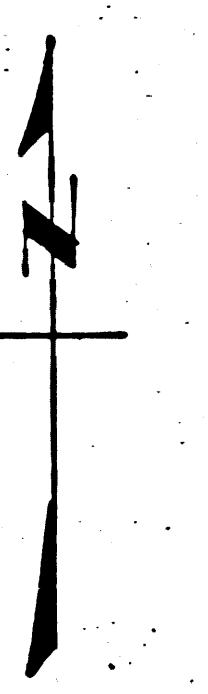
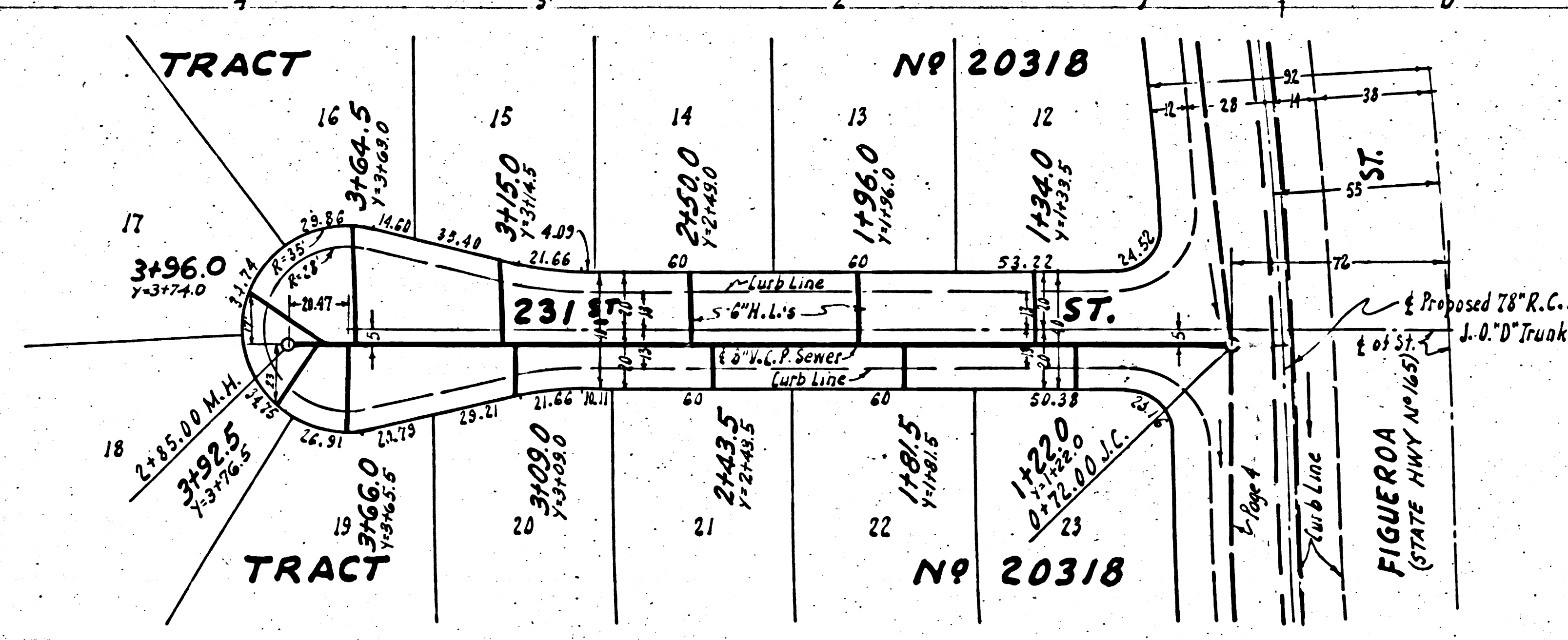
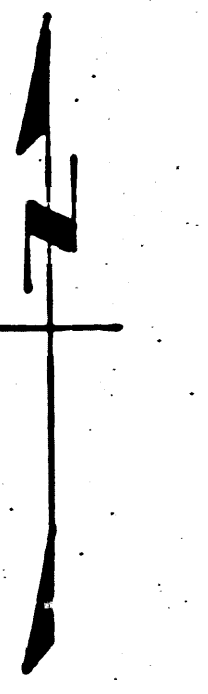
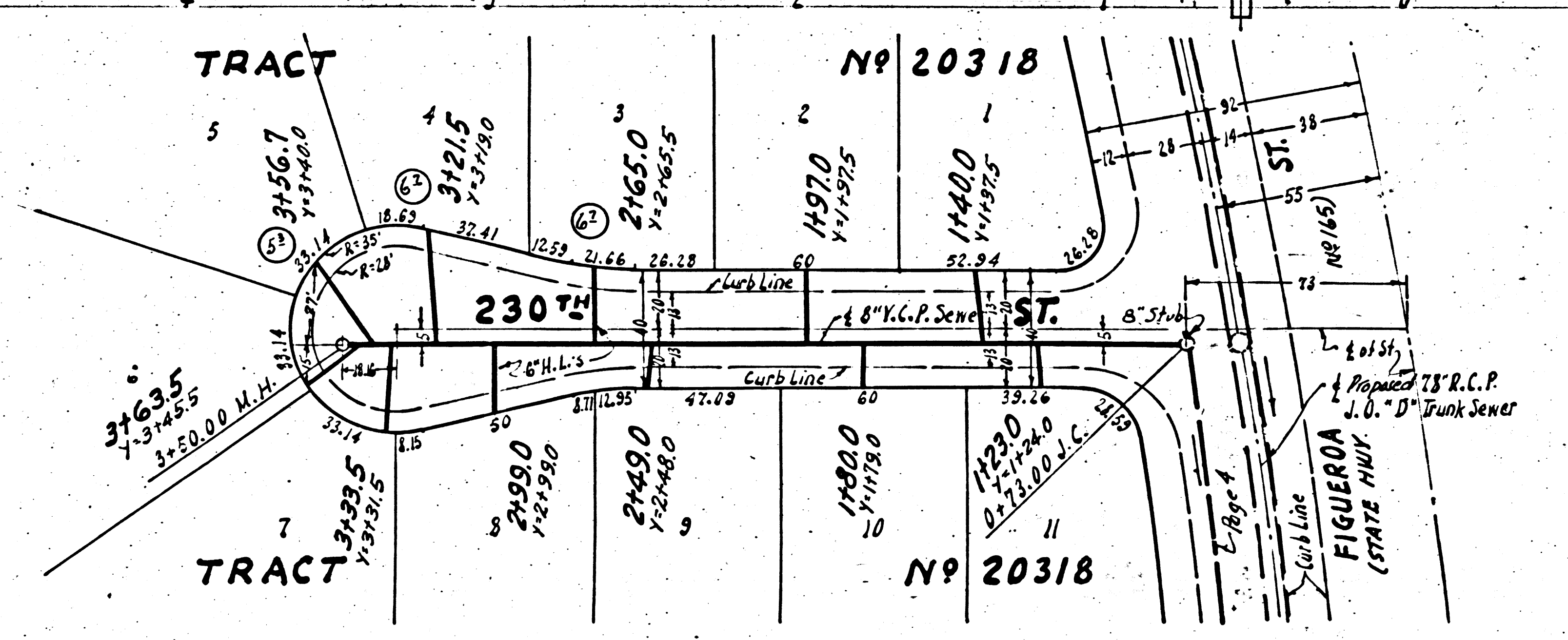
35
30
25



P.C. 3113
J.N. 1100.01
PAGE 3

NO CHARGE FOR
CONNECTIONS

(9.743)



Trim Line

