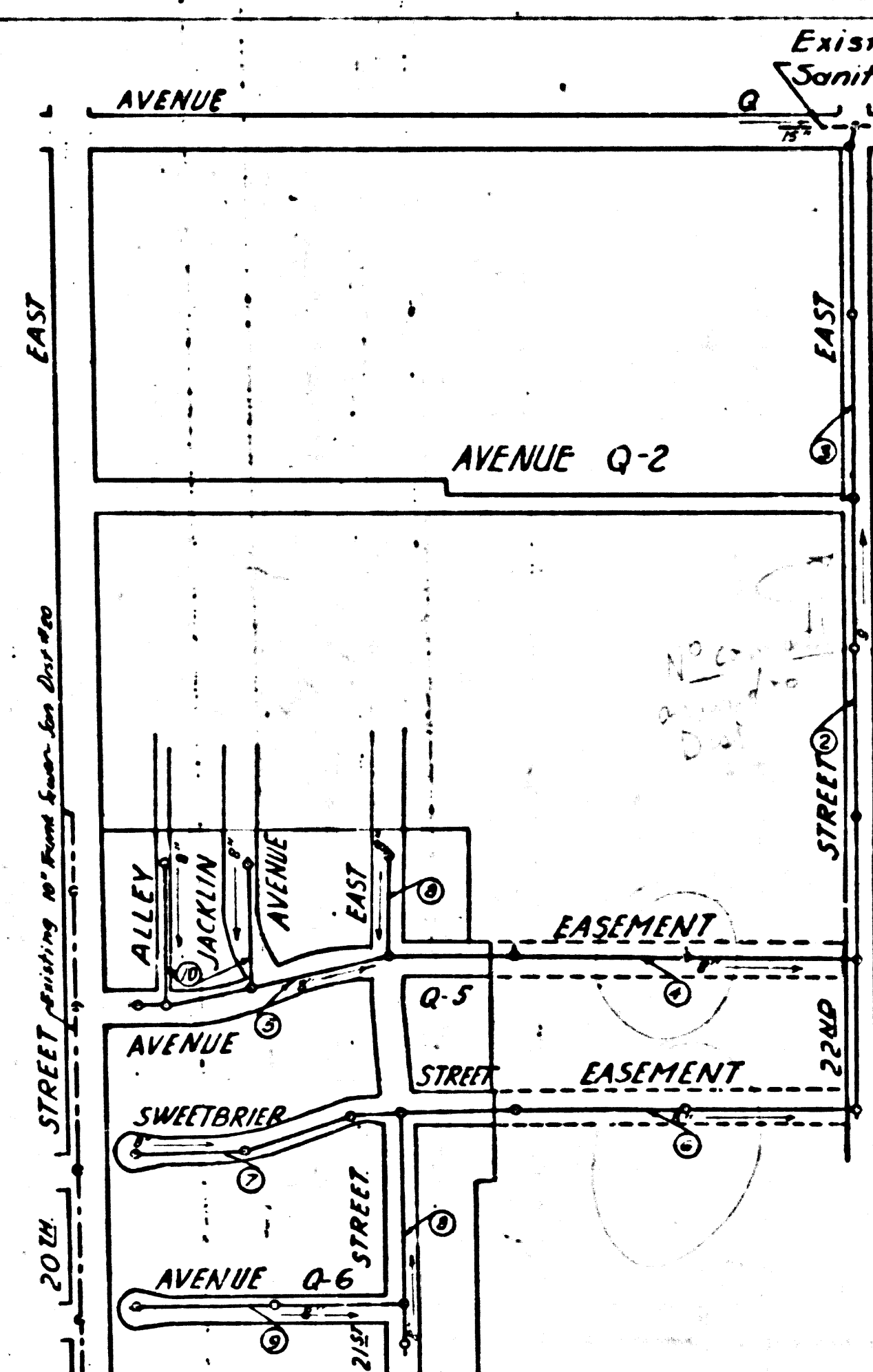


P.C. 3115  
J.N. 110002  
PAGE 2

COLLECT CHARGES  
AS INDICATED

19,812



BENCH MARK: a 18" 6" intersection of Ave Q & 20th St. E. in a well protected by a cast iron cover marked County Surveyors monument A 5th County Surveyors Monument marked Sec. 24, 19, 28, 30 T. 6N, R. 12W, R. 1W. Set in concrete 13" below the surface. Elev. taken on edge of brass cap near first letter "m" in monument. Elev. 2596.923

CONNECTION CHARGES  
AS INDICATED  
L. Carter R-5-54

SHEET NO	PAGES
1	1-5
2	6-10

INDEX MAP  
SCALE 1"=300'  
TRACT NO 20592  
P.C. 3115 J.N. 099231

Checked 2-20-55 W. J. Fox

PALMDALE Bldg. Dist. No. 8-P

- NOTE:  
Provide stakes on the property lines or property lines produced at right angles to the sewer line at the center line of each manhole.  
No representative of the County Engineer will survey or layout any portion of the work. The owner or his authorized representative shall furnish the County Engineer with grade sheets and stations for all house laterals and Y branches and shall provide stakes for them at their proper locations with stationing plainly marked. Any change in location shall be requested in writing by the owner or his representative.  
No revisions shall be made in these plans without the approval of the County Engineer.
1. Use standard manhole frames and covers, S-a-117.
  2. Use standard strength pipe except as noted.
  3. Use cement mortar for all vitrified clay pipe joints.
  4. Resurface all trench within paved area to meet L.A. County Road Dept. or Calif. State Highway Dept. requirements in accordance with permit.
  5. Encase four feet of sewer at points of interference with poles, S-a-119.
  6. House laterals to be constructed with inverts at property line... 6..... feet below curb grade except as noted.
  7. All structures shall be brick sewer structures, S-a-104.
  8. For allowable leakage test, use Formula No. 1..... Spec's., Sec. 51.
  9. Manhole tops in unimproved Rights-of-Way to be 6" above finish grade.
- BALL ALL PIPE JOINTS WITH 4" CEMENT MORTAR THAT ARE WITHIN 20' OF ALL PROPERTY LINES OR IN SANITARY SEWER R/W.

Before breaking into any existing structure and before final acceptance of this work, County Sanitation District should be notified in order that required inspection may be made.

PROFILE, ALIGNMENT AND GRADE OF  
SANITARY SEWERS  
TO BE CONSTRUCTED IN

TRACT NO 20592

PRIVATE CONTRACT NO. 3115  
W. S. 65

Scale: VERT. 1"=4'  
HORIZ. 1"=40'  
JULY 1954  
SHEETS 2  
FOR LEGEND SEE PLAN NO. S-a-64

NOTE:  
Grades to which this improvement is to be constructed are shown on plans and profiles. Grade points for top of curbs, center line of streets, or center line of alleys are shown by circles on profiles. At all points between designated points the grade shall be established so as to conform to a straight line drawn between said designated points.  
Elevations are in feet above U.S.G.S. datum or mean sea level.  
This drawing and the data hereon are hereby made a part of the specifications.  
Work shall be constructed according to specifications on file in the office of the County Engineer and shall be prosecuted only in the presence of the County Engineer.  
Before work can be started, the contractor must obtain a permit to excavate in County streets from the L.A. County Road Dept., 108 W. 2nd St., and make a deposit with the County Engineer, 733 L.A. County Engineering Building, sufficient to cover the cost of construction inspection and record plans.  
Approval of this plan by the County of Los Angeles does not constitute a representation as to the accuracy of the location of or the existence or non-existence of any underground utility, pipe, or structure within the limits of this project. This note applies to all sheets.  
If work is to be done in a State Highway, a permit must be obtained from the State of California, Division of Highways, 120 South Spring Street.

COUNTY OF LOS ANGELES, CALIFORNIA  
Approved, William J. Fox, County Engineer  
Approved, A. M. Rawn  
CHIEF ENGR. CO. SAN. DIST. NO. 20  
Checked by: [Signature] 10-6-54  
Office of County Engineer, Bldg. C. E. No. 2862

TRACT NO 20592

19,811

P.C. 3115  
J.N. 110002



PC 3115

P.C. 3115  
J.N. 1100.02  
PAGE 3  
2575

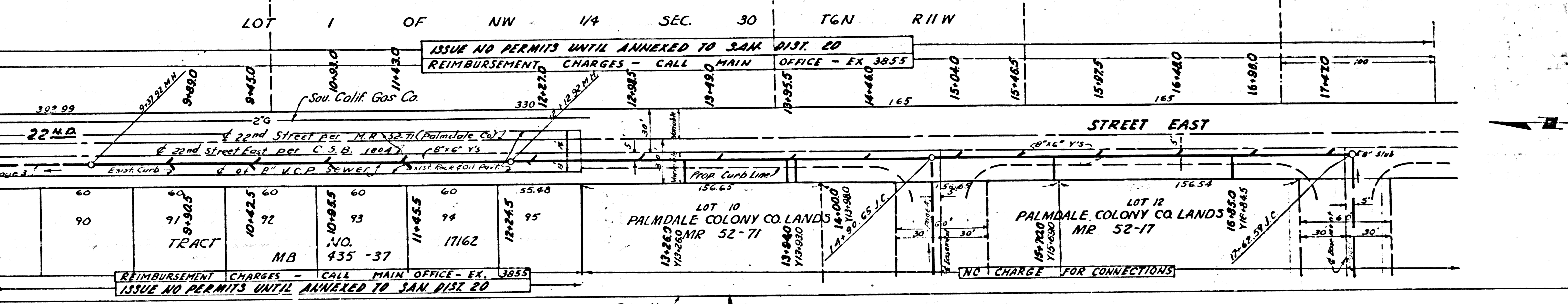
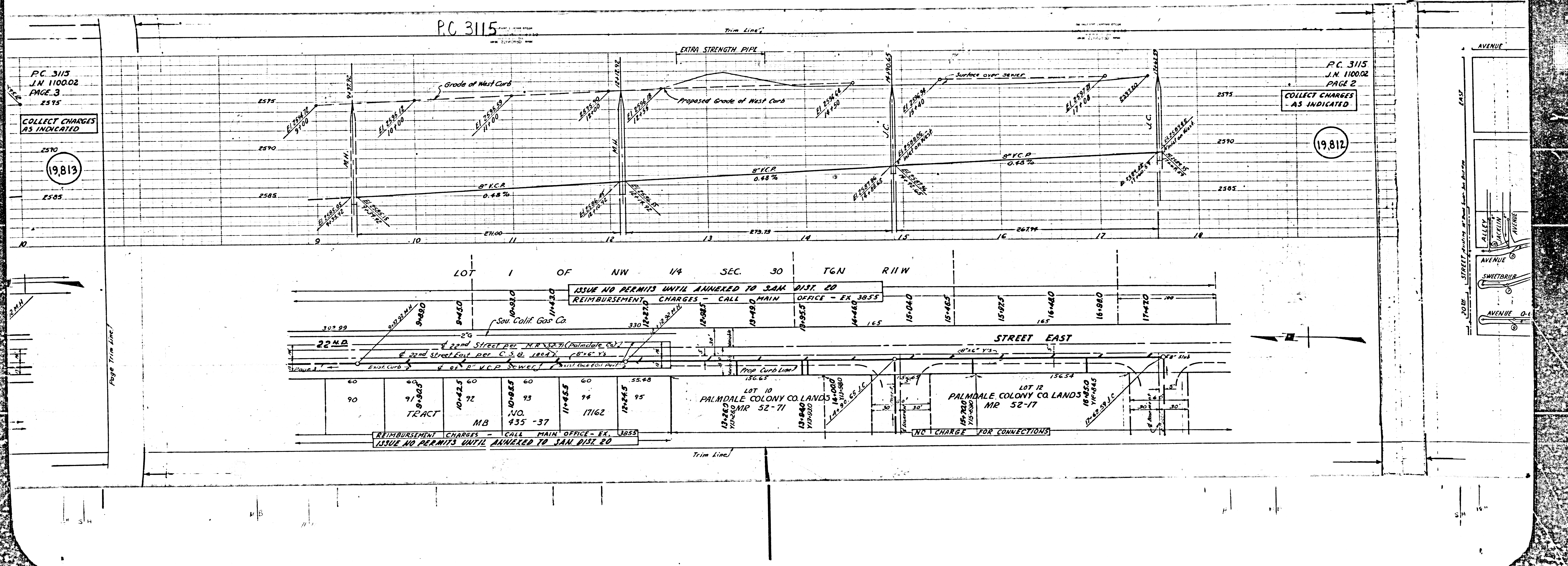
COLLECT CHARGES  
AS INDICATED

(19,813)

P.C. 3115  
J.N. 1100.02  
PAGE 2

COLLECT CHARGES  
AS INDICATED

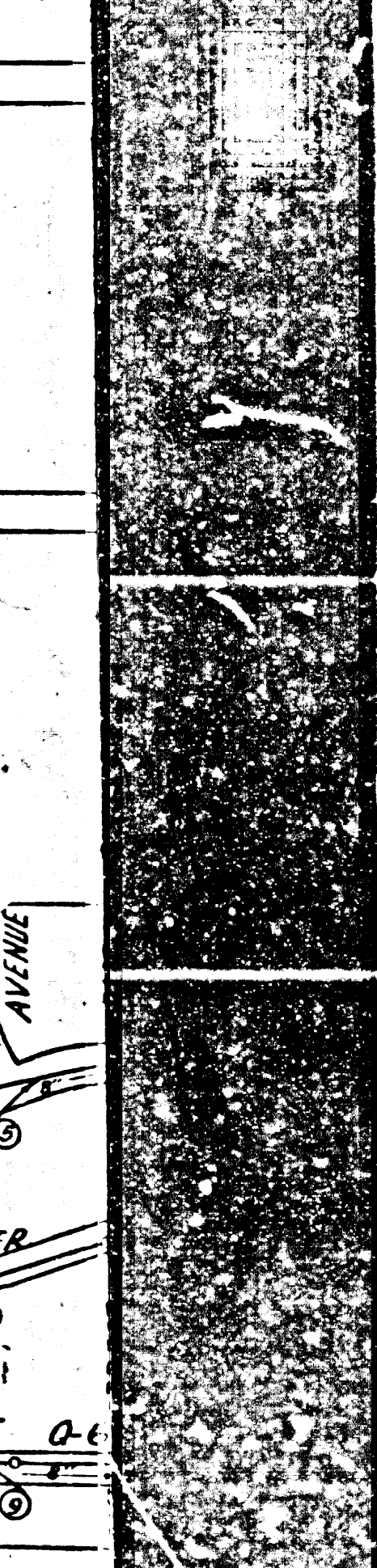
(19,812)



REIMBURSEMENT CHARGES - CALL MAIN OFFICE - EX. 3855  
ISSUE NO PERMITS UNTIL ANNEXED TO SAN DIST. 20

NO CHARGE FOR CONNECTIONS

Page Trim Line





P.C. 3115  
J.N. 1100.02  
PAGE 4

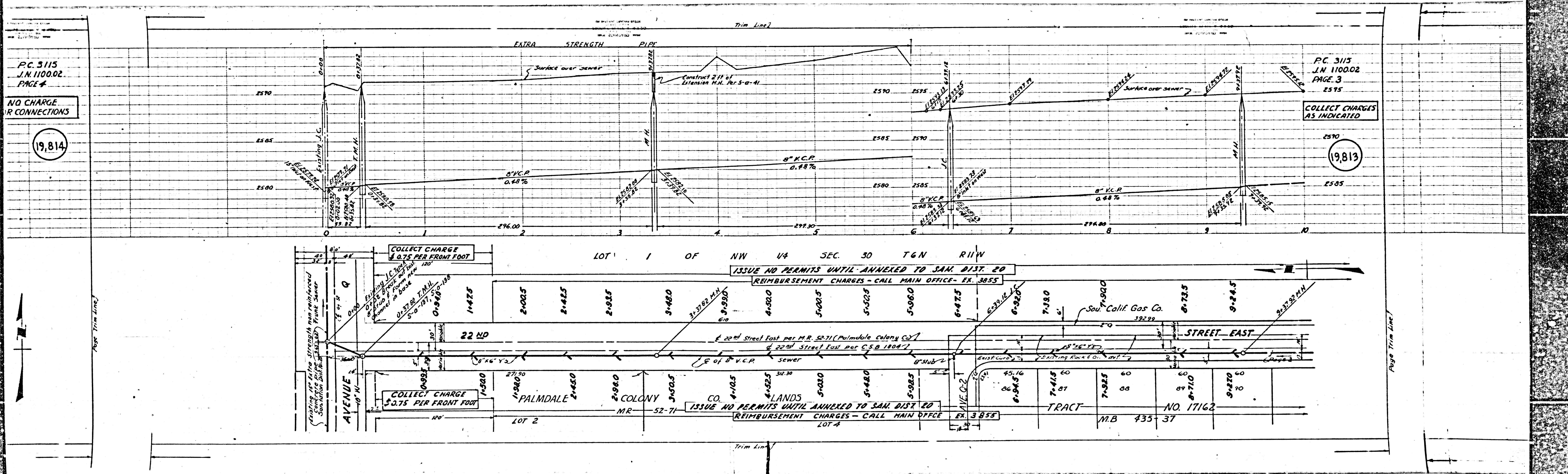
NO CHARGE  
FOR CONNECTIONS

19,814

P.C. 3115  
J.N. 1100.02  
PAGE 3

COLLECT CHARGES  
AS INDICATED

19,813





PC 3115  
J.N. 1100.02  
PAGE 5

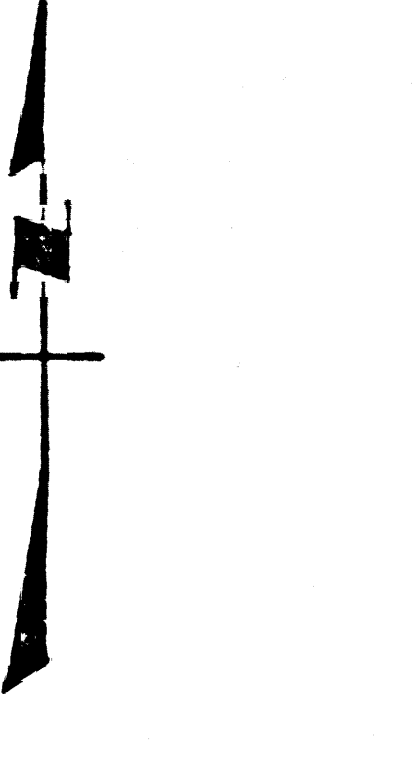
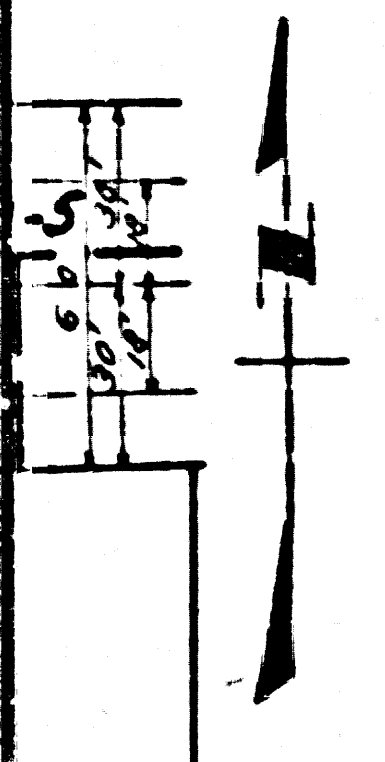
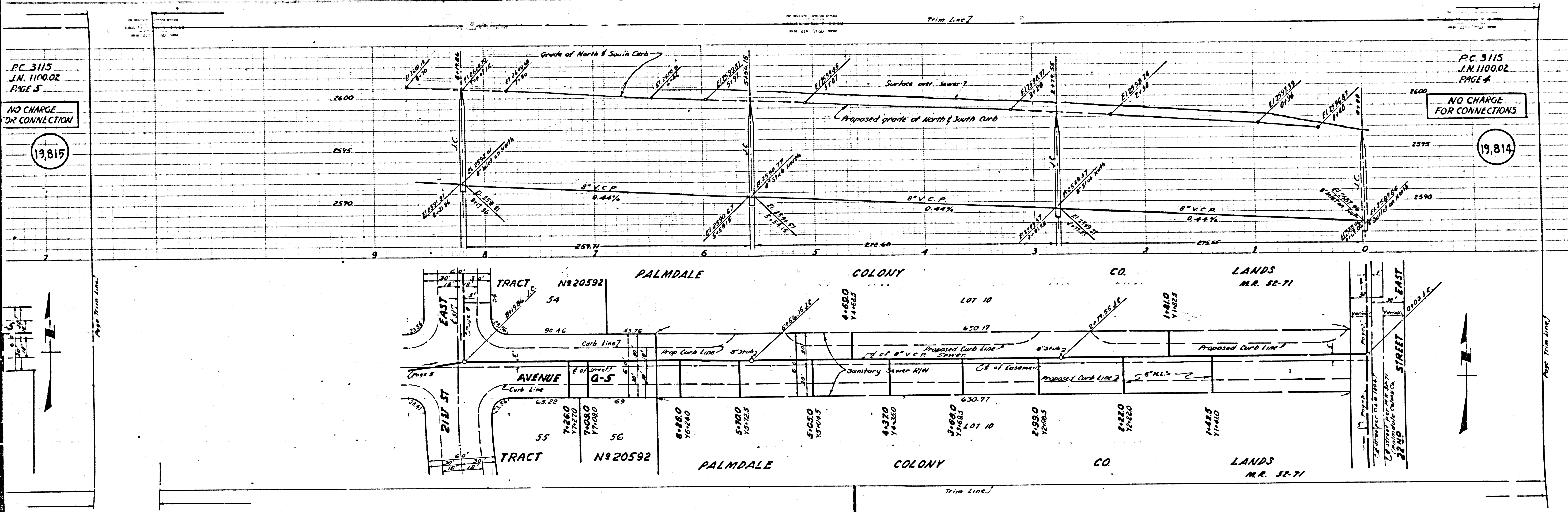
NO CHARGE  
OR CONNECTION

19,815

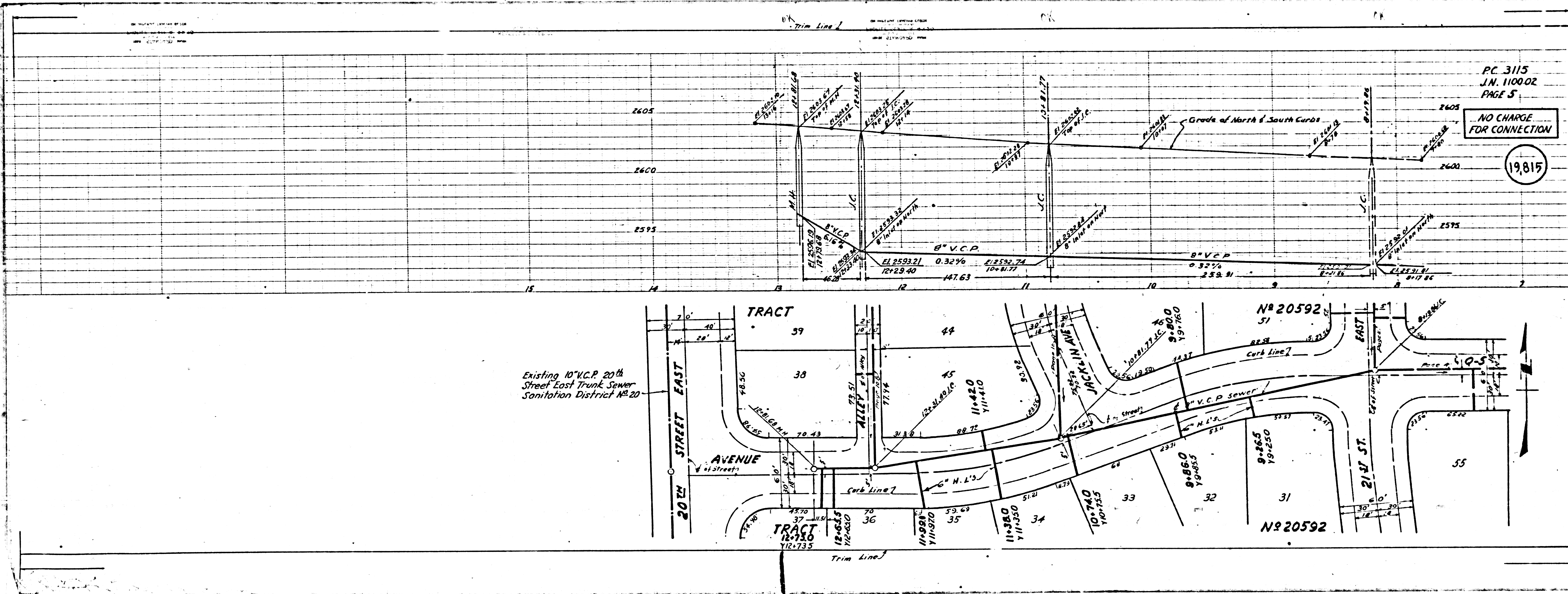
PC 3115  
J.N. 1100.02  
PAGE 4

NO CHARGE  
FOR CONNECTIONS

19,814







PC. 3115  
J.N. 110002  
PAGE 5

NO CHARGE  
FOR CONNECTION

19815

Existing 10" V.C.P. 20th  
Street East Trunk Sewer  
Sanitation District No. 20

TRACT  
18-730  
118-733

TRACT  
39

TRACT  
38

TRACT  
37

TRACT  
36

TRACT  
35

TRACT  
34

TRACT  
33

TRACT  
32

TRACT  
31

TRACT  
35

No 20592  
51

No 20592  
51

No 20592  
51

No 20592  
51

No 20592  
51

No 20592  
51

No 20592  
51

No 20592  
51

No 20592  
51

No 20592  
51

Page 5



PC 3115  
J.N. 1100.02  
PAGE 7

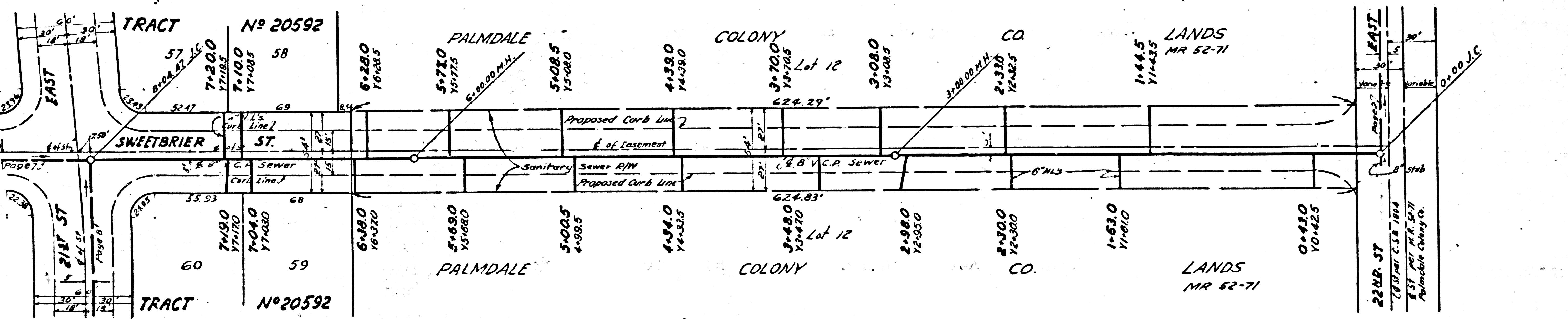
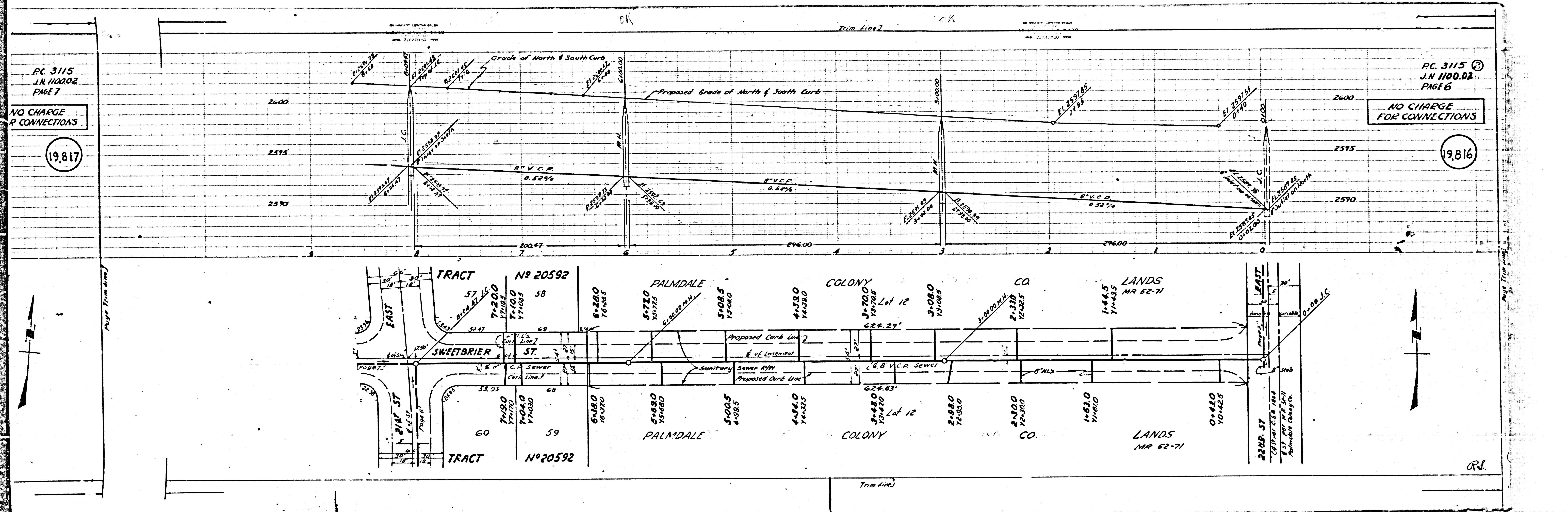
NO CHARGE  
FOR CONNECTIONS

19,817

PC 3115 ©  
J.N. 1100.02  
PAGE 6

NO CHARGE  
FOR CONNECTIONS

19,816



ORL



PC 3115

Trim Line

PC 3115  
J.N. 1100.02  
PAGE 8

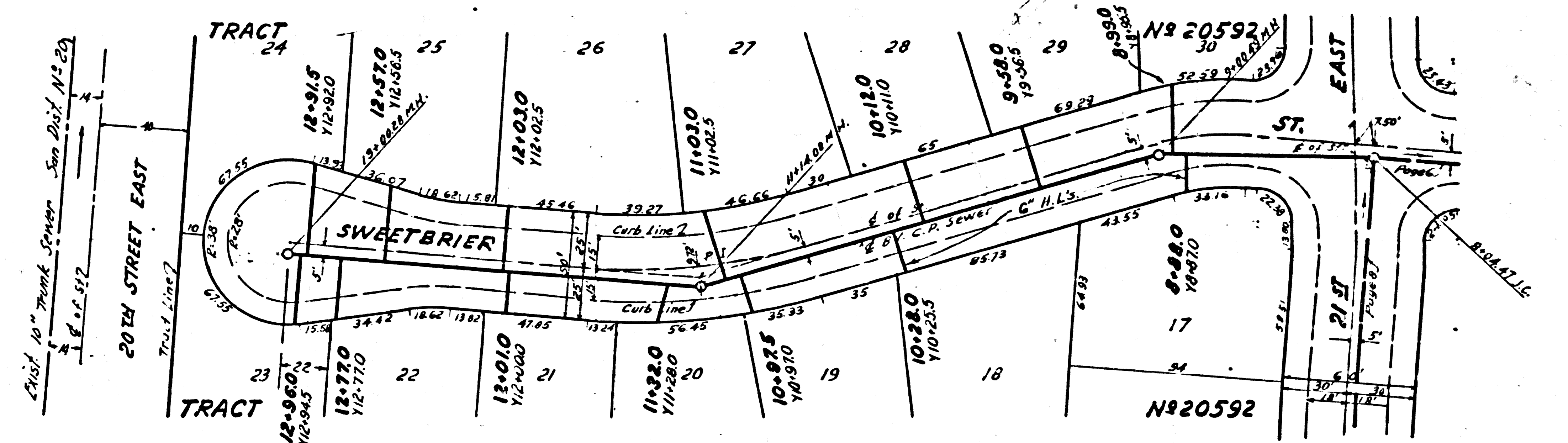
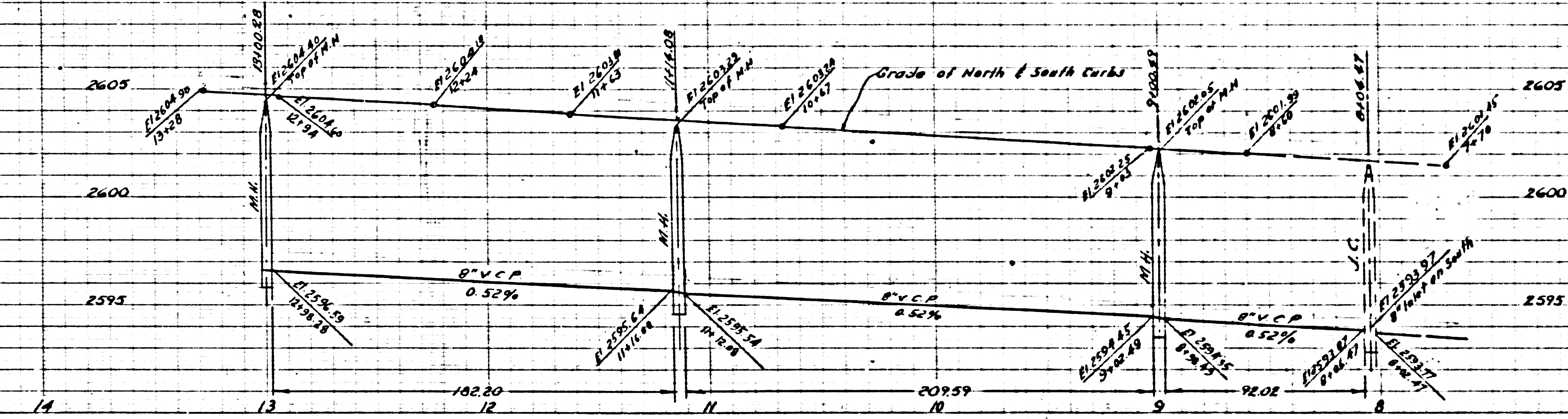
PC 3115  
J.N. 1100.02  
PAGE 7

NO CHARGE  
FOR CONNECTIONS

NO CHARGE  
FOR CONNECTIONS

19,818

19,817



Trim Line

34

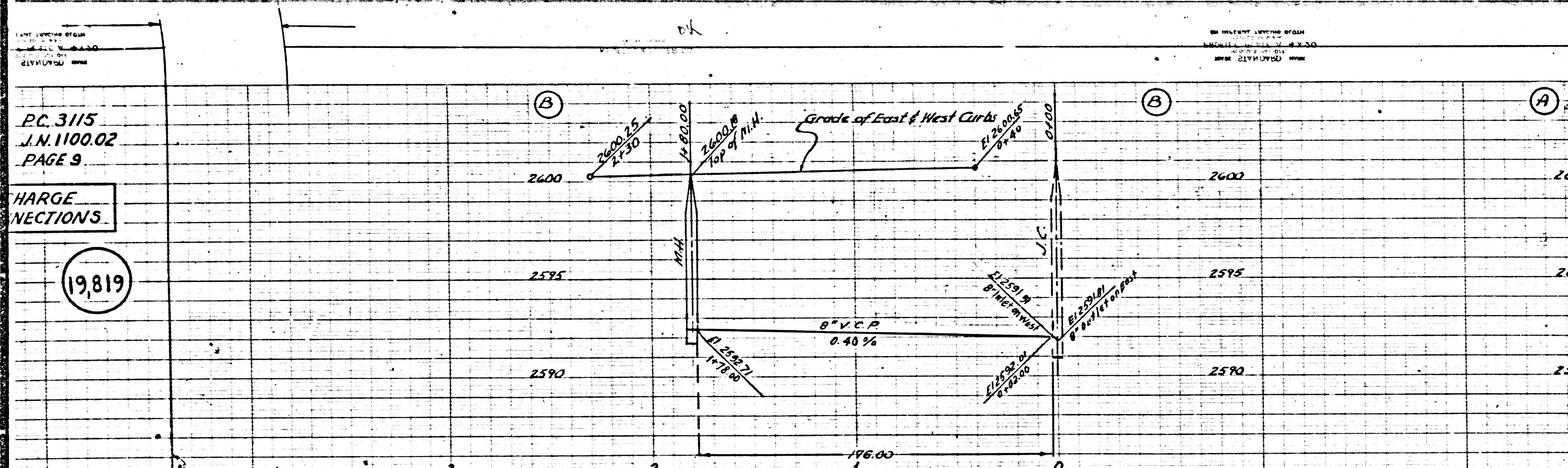
34



PC. 3115  
J.N. 1100.02  
PAGE 9

LARGE  
SECTIONS.

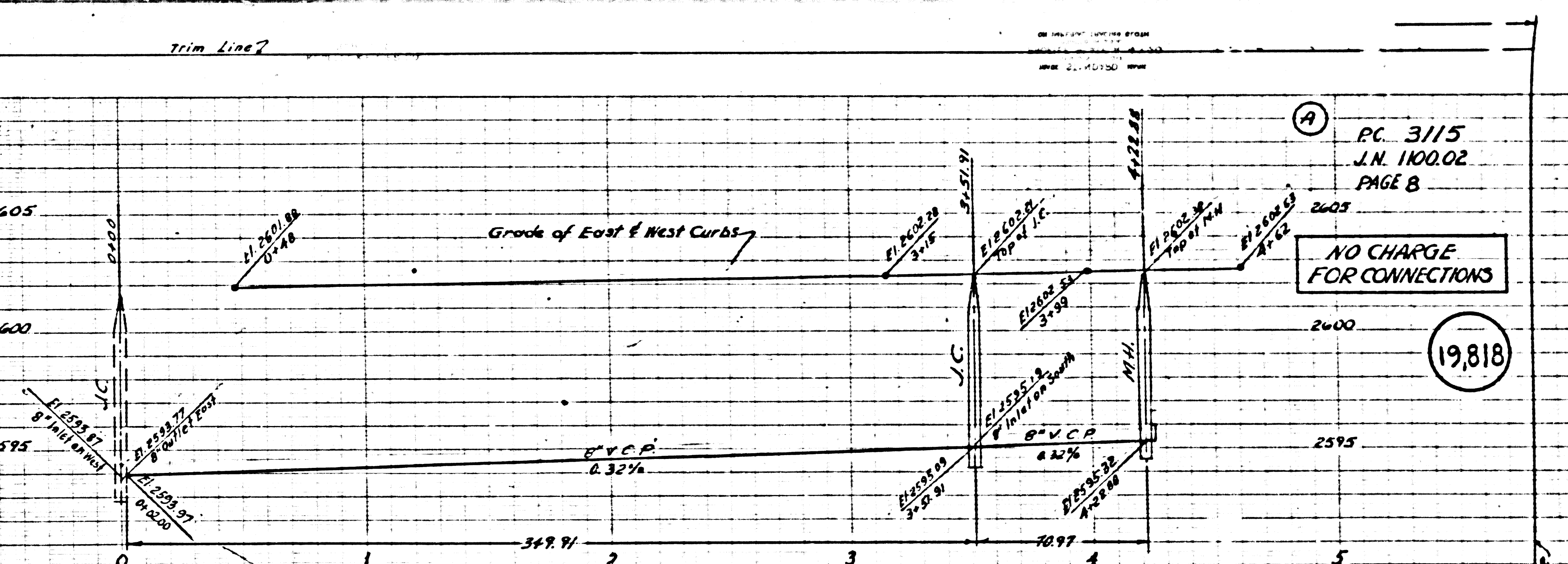
19,819



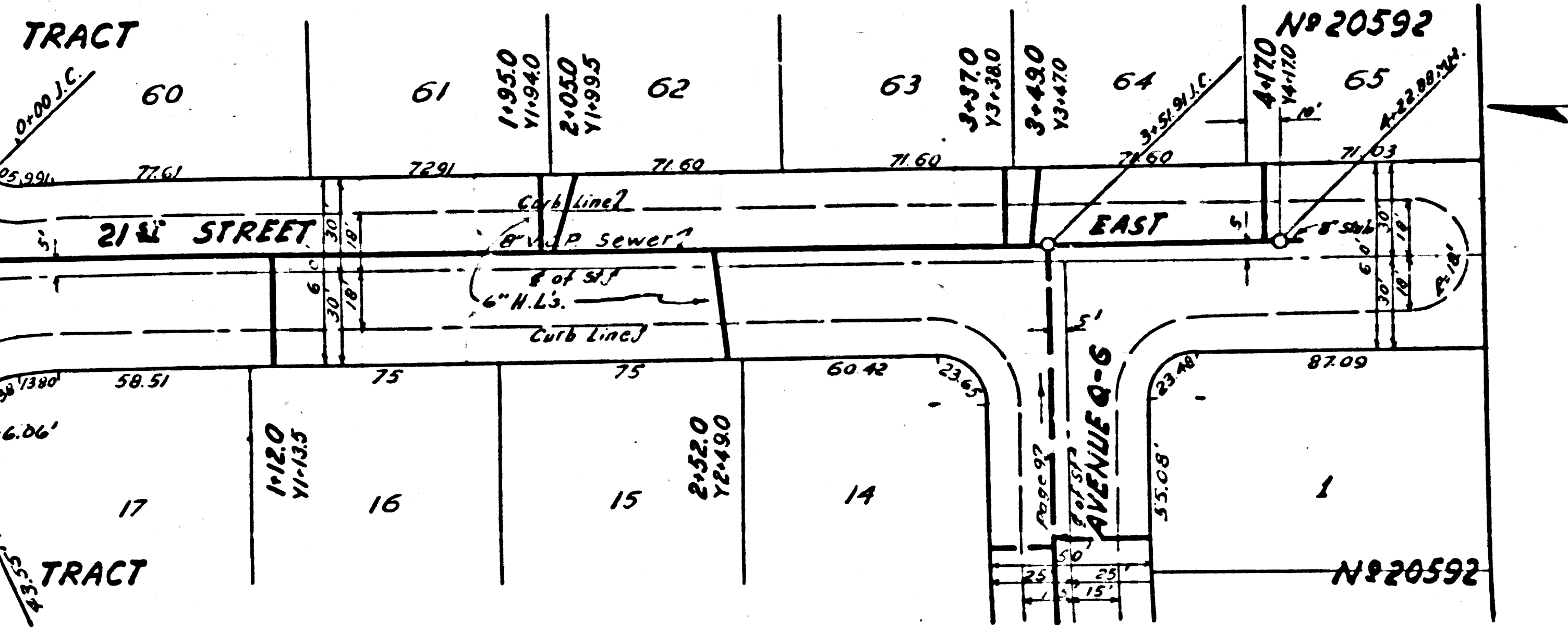
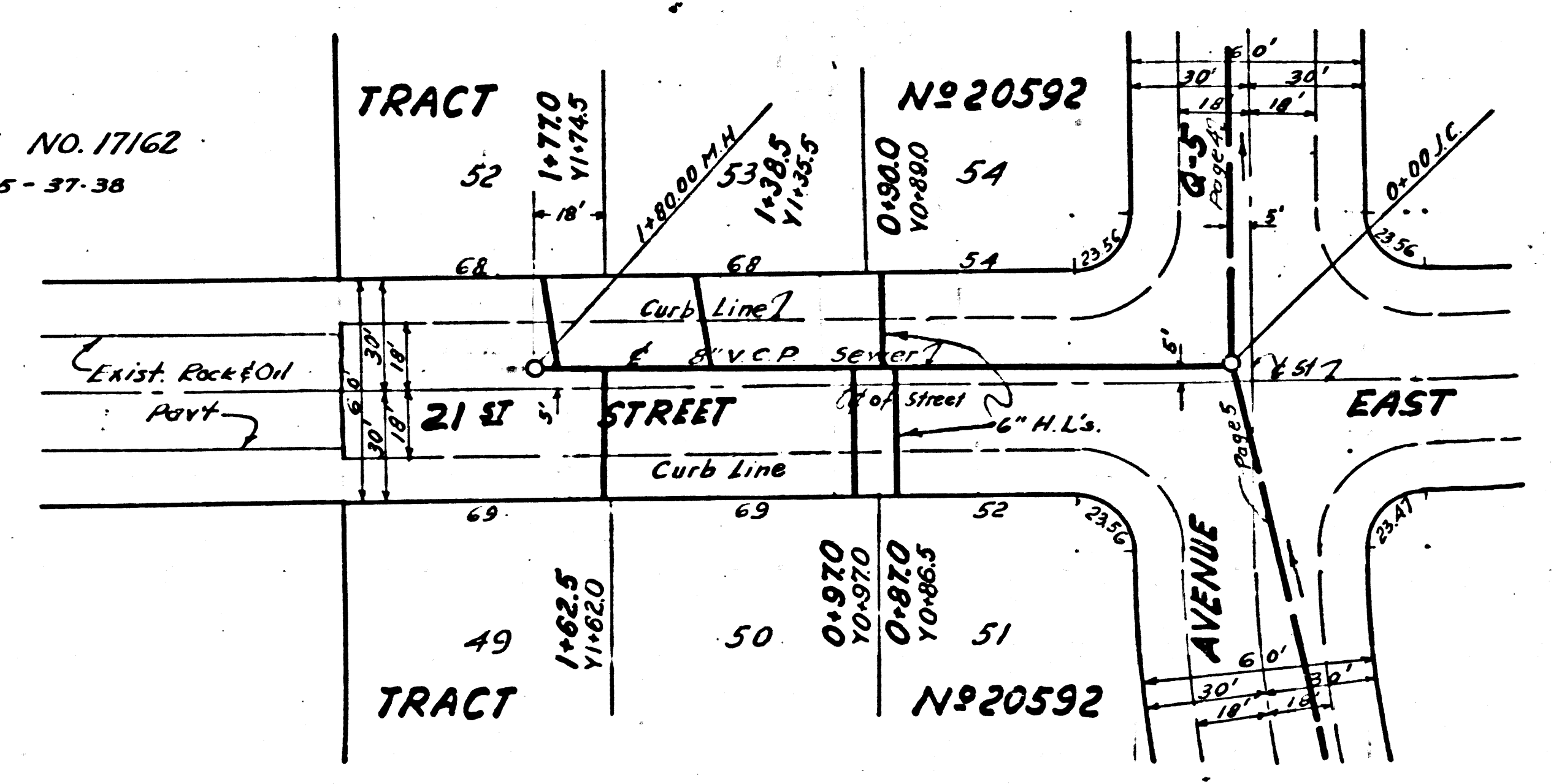
PC. 3115  
J.N. 1100.02  
PAGE 8

NO CHARGE  
FOR CONNECTIONS

19,818



TRACT NO. 17162  
M.B. 935-37-38



Trim Line



PC 3115  
J.N. 1100.02  
PAGE 10

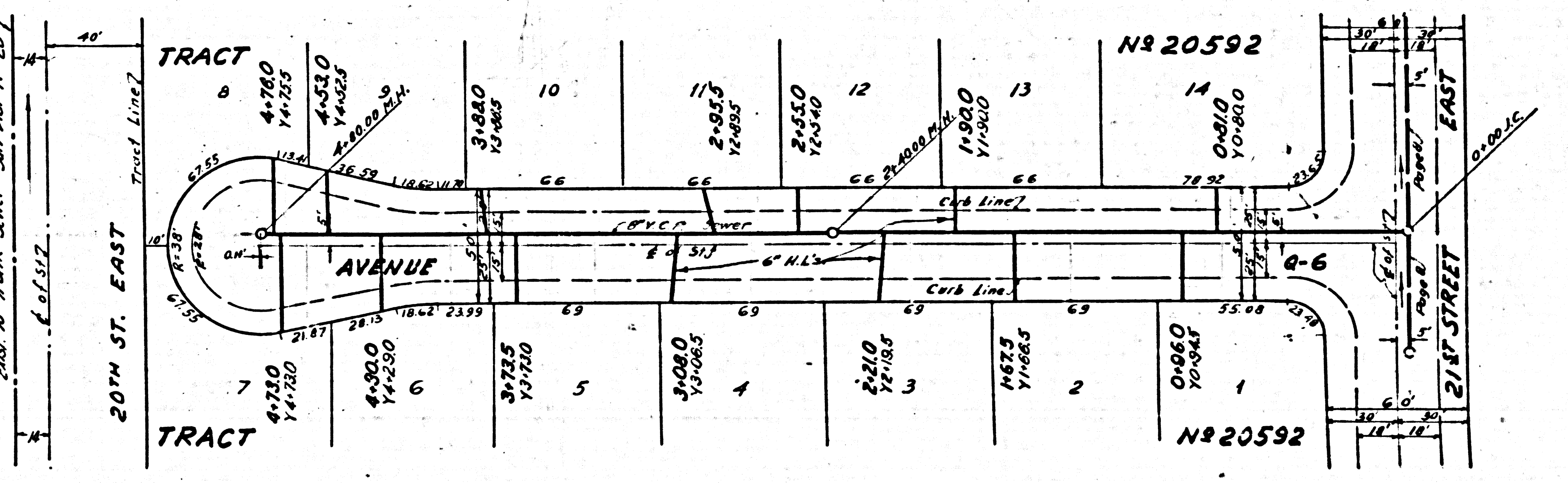
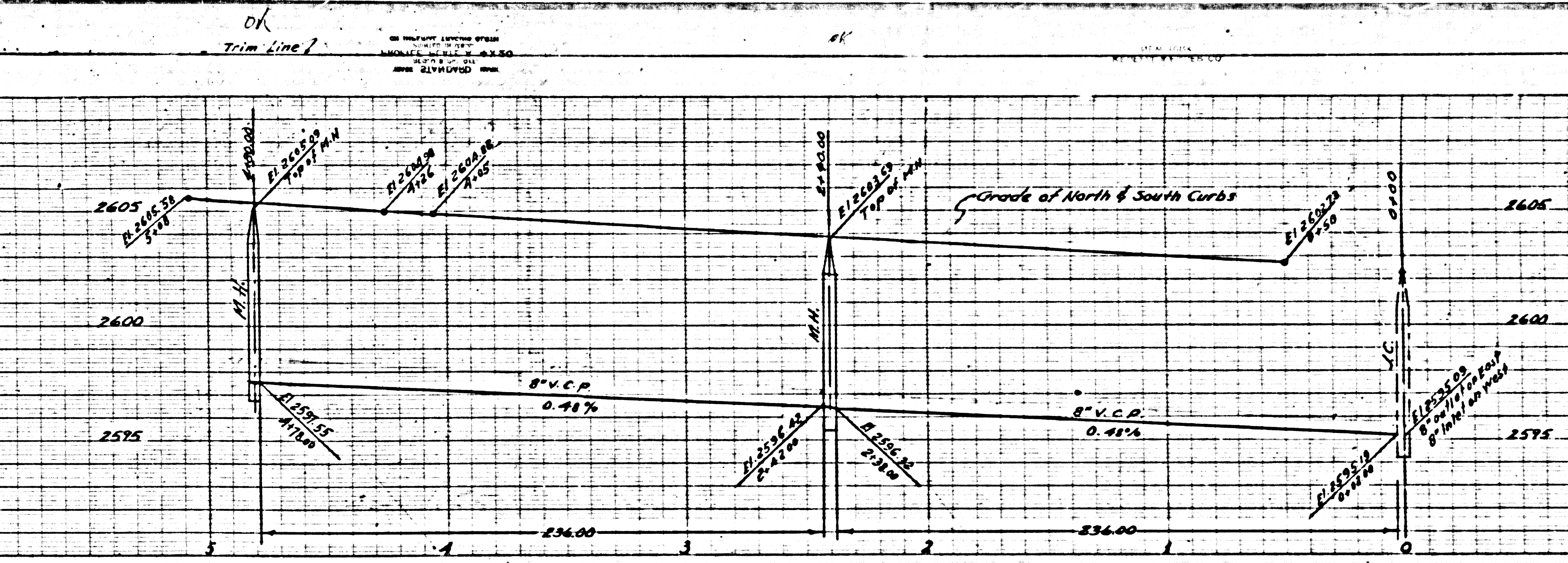
CHARGE  
CONNECTIONS

19,820

PC 3115  
J.N. 1100.02  
PAGE 9

NO CHARGE  
FOR CONNECTIONS

19,819



TRACT NO. 1  
NS 935-57-3



