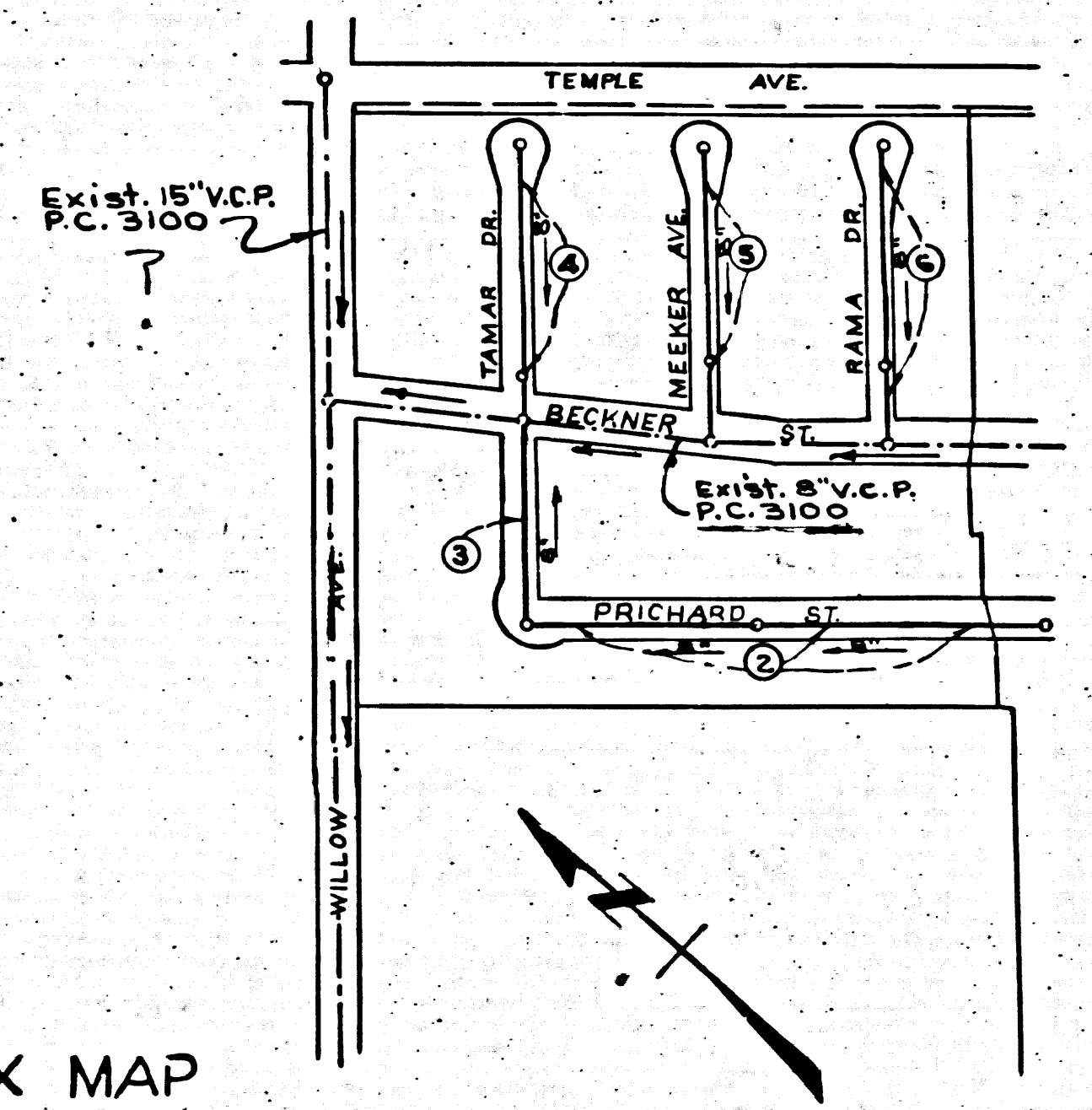


PUENTE BLDG. DIST. NO. 2

- NOTE:**
 Provide stakes on the property lines or property lines produced at right angles to the sewer line at the center line of each manhole.
- No representative of the County Engineer will survey or layout any portion of the work. The owner or his authorized representative shall furnish the County Engineer with grade sheets and stations for all house laterals and Y branches and shall provide stakes for them at their proper locations with stationing plainly marked. Any change in location shall be requested in writing by the owner or his representative.
- No revisions shall be made in these plans without the approval of the County Engineer.
1. Use standard manhole frames and covers, S-a-117.
 2. Use standard strength pipe except as noted.
 3. Use cement mortar for all vitrified clay pipe joints.
 4. Resurface all trench within paved area to meet L.A. County Road Dept. or California State Highway Dept. requirements in accordance with permit.
 5. Encase four feet of sewer at points of interference with poles, S-a-119.
 6. House laterals to be constructed with inverts at property line 6 feet below curb grade except as noted.
 7. All structures shall be brick sewer structures, S-a-104.
 8. For allowable leakage test, use Formula No. 1, Spec's., Sec. 51.

8.M. 56 1093
 Lead & tack near S.W. corner conc. walk
 at S.W. corner of house # 14605 Nelson
 Ave., N.E. cor. Sunset Ave & Nelson Ave.
 Elev. 304.683



SHEET	PAGES
1	1-3
2	4-6

**NO CHARGE
 FOR CONNECTIONS**
8-16-54

NOTE:
 Lots 1 thru 7, 38 thru 46,
 71, and 93 thru 99 are served
 by sewer constructed under
 P.C. 3100.

Checked 11-15-54 M. L. ...

PROFILE, ALIGNMENT AND GRADE OF
SANITARY SEWERS
 TO BE CONSTRUCTED IN
TRACT NO. 19587

PRIVATE CONTRACT NO. 3120
 W. S. 46
 2 SHEETS

Scale: VERT. 1"=4'
 HORIZ. 1"=40' AUGUST 1954

PREPARED IN THE OFFICES OF
**NATIONAL ENGINEERING &
 SURVEYING SERVICE CO.**

Elsworth J. Apperson
 Reg. C. E. No. 5888

FOR LEGEND SEE PLAN NO. S-a-64

P.C. 3120
 J.N. 099771
 PAGE 1

(19,242)

NOTE:
 Grades to which this improvement is to be constructed are shown on plans and profiles. Grade points for top of curbs, center line of streets, or center line of alleys are shown by circles on profiles. At all points between designated points the grade shall be established so as to conform to a straight line drawn between said designated points.
 Elevations are in feet above U.S.G.S. datum or mean sea level.
 This drawing and the data hereon are hereby made a part of the specifications.
 Work shall be constructed according to specifications on file in the office of the County Engineer and shall be prosecuted only in the presence of the County Engineer.
 Before work can be started, the contractor must obtain a permit to excavate in County streets from the L.A. County Road Dept., 108 W. 2nd St. and make a deposit with the County Engineer, 723 L.A. County Engineering Building, sufficient to cover the cost of construction inspection and record plans.
 Approval of this plan by the County of Los Angeles does not constitute a representation as to the accuracy of the location of or the existence or non-existence of any underground utility, pipe, or structure within the limits of this project. This note applies to all sheets.
 If work is to be done in a State Highway, a permit must be obtained from the State of California, Division of Highways, 120 South Spring Street.

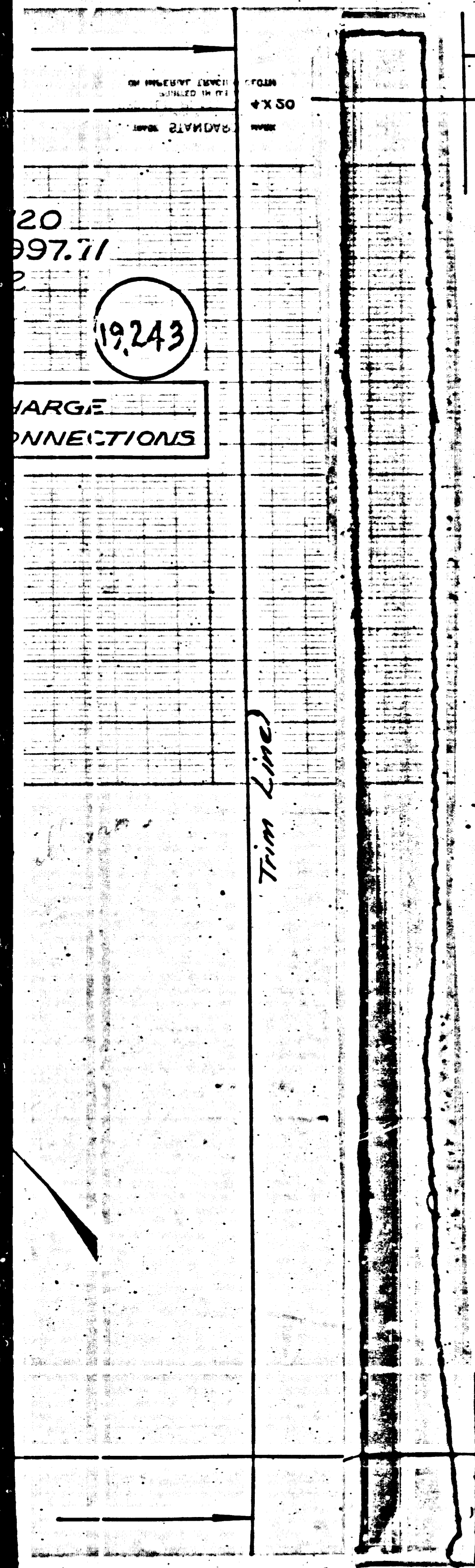
COUNTY OF LOS ANGELES, CALIFORNIA

Approved, William J. Fox, County Engineer
W. J. Fox
 Sanitation Engineer

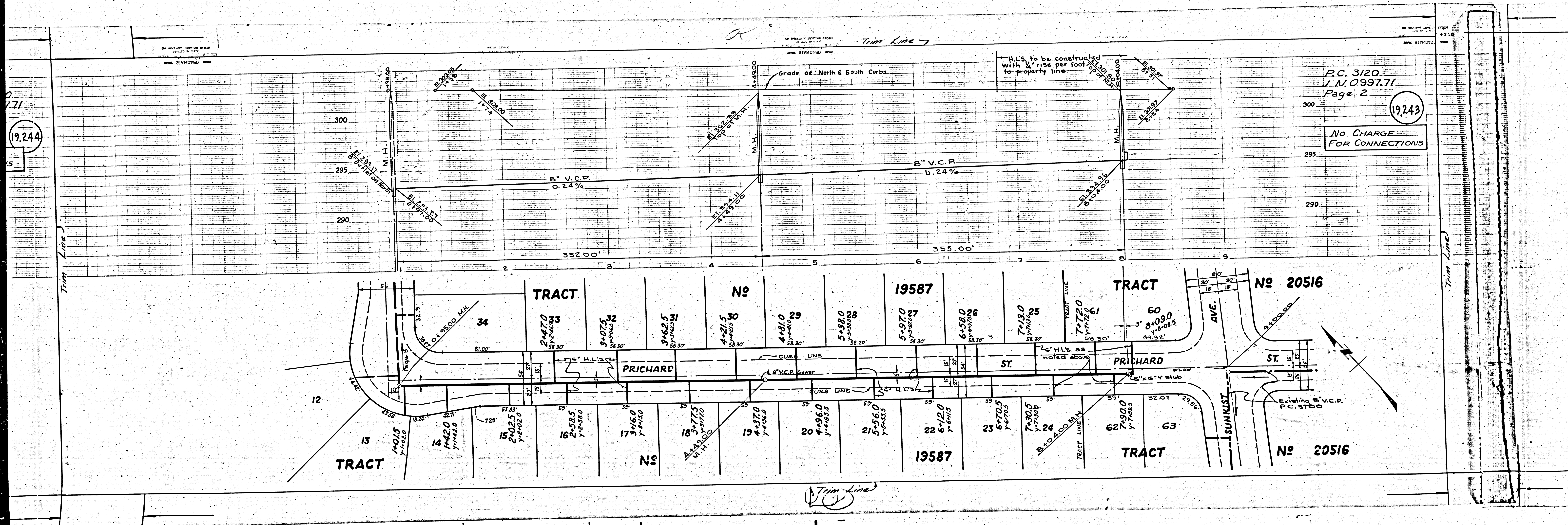
Approved, A. M. Reun
 CHIEF ENGR. CO. SAN. DIST. NO. 15
A. M. Reun
 ASST. Office Engineer

Checked by: *Ref. ...*
 Office of County Engineer, Reg. C. E. No. 7860.

INDEX MAP
 SCALE 1"=300'
 TRACT NO. 19587
 P.C. 3120 J.N. 099771



TRACT NO. 19587



19244

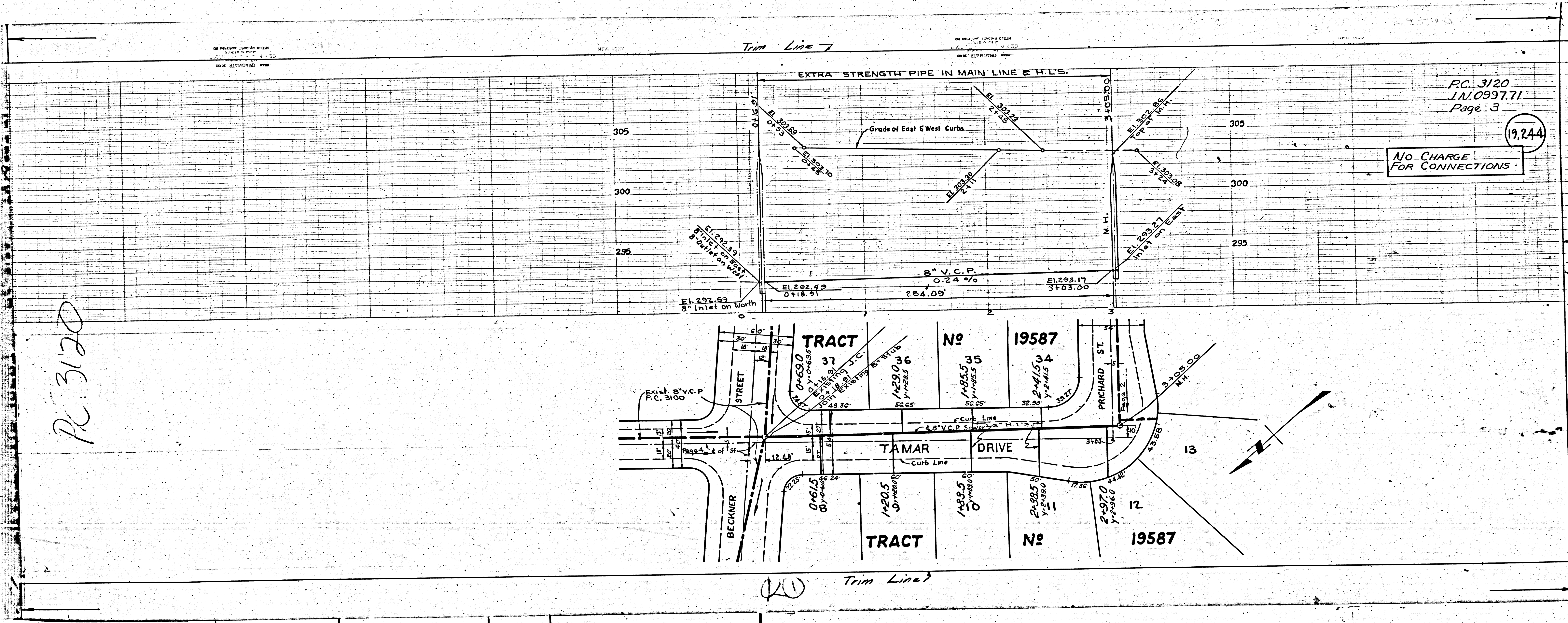
P.C. 3120
 J.N. 0997.71
 Page 2

19243

No CHARGE
 FOR CONNECTIONS

Trim Line

PC 3120

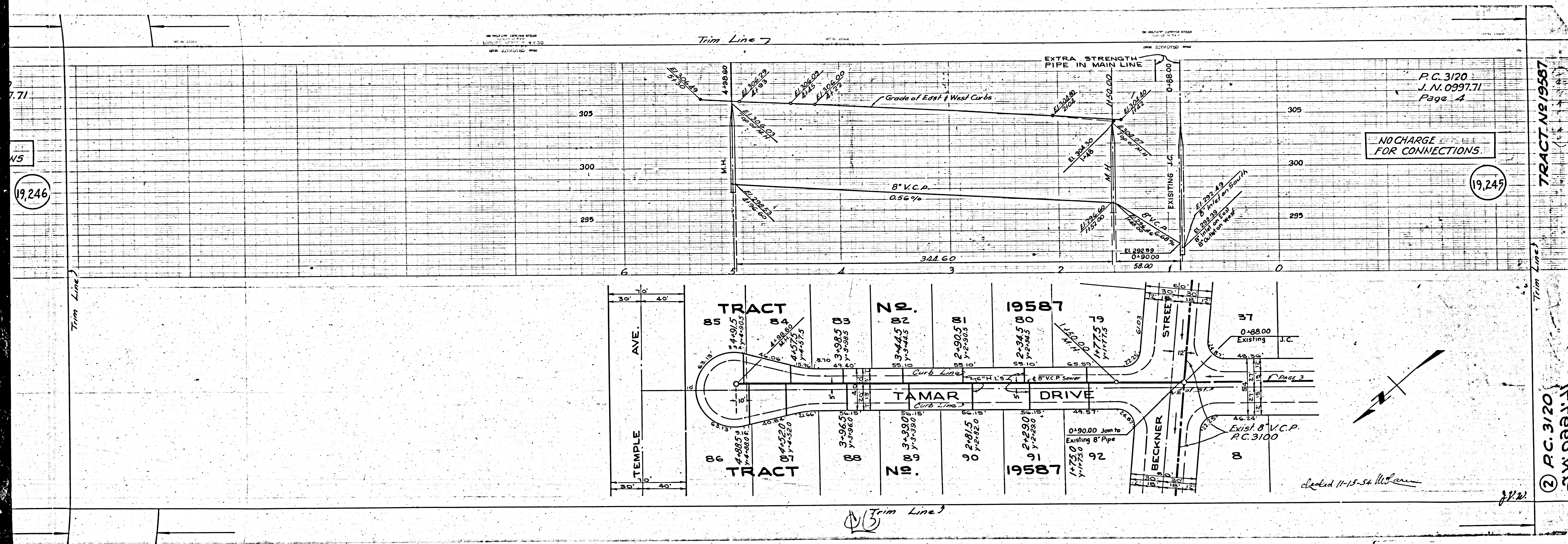


PC 3120
J.N. 0997.71
Page 3

19,244

NO CHARGE FOR CONNECTIONS

Trim Line



7.71

NS

19,246

P.C. 3120
J.N. 0997.71
Page 4

NO CHARGE
FOR CONNECTIONS

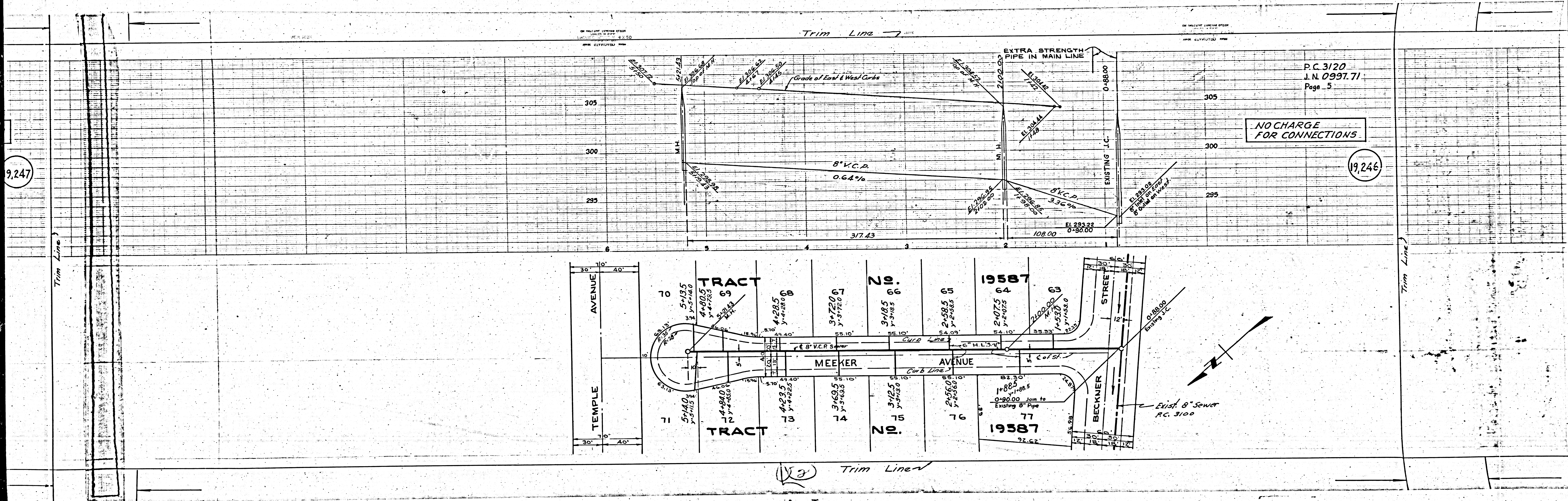
19,245

TRACT No 19567

② P.C. 3120
J.N. 0997.71

dated 11-15-54

3/12



9,247

P.C. 3120
I.N. 0997.71
Page 5

NO CHARGE
FOR CONNECTIONS

19,246

(23) Trim Line

TRACT 19587

0316.39

P.C. 3120

BY MEANS OF SURVEYING INSTRUMENTS
AND THE FOLLOWING DATA
AS SHOWN ON THE PLAN

MEASUREMENTS

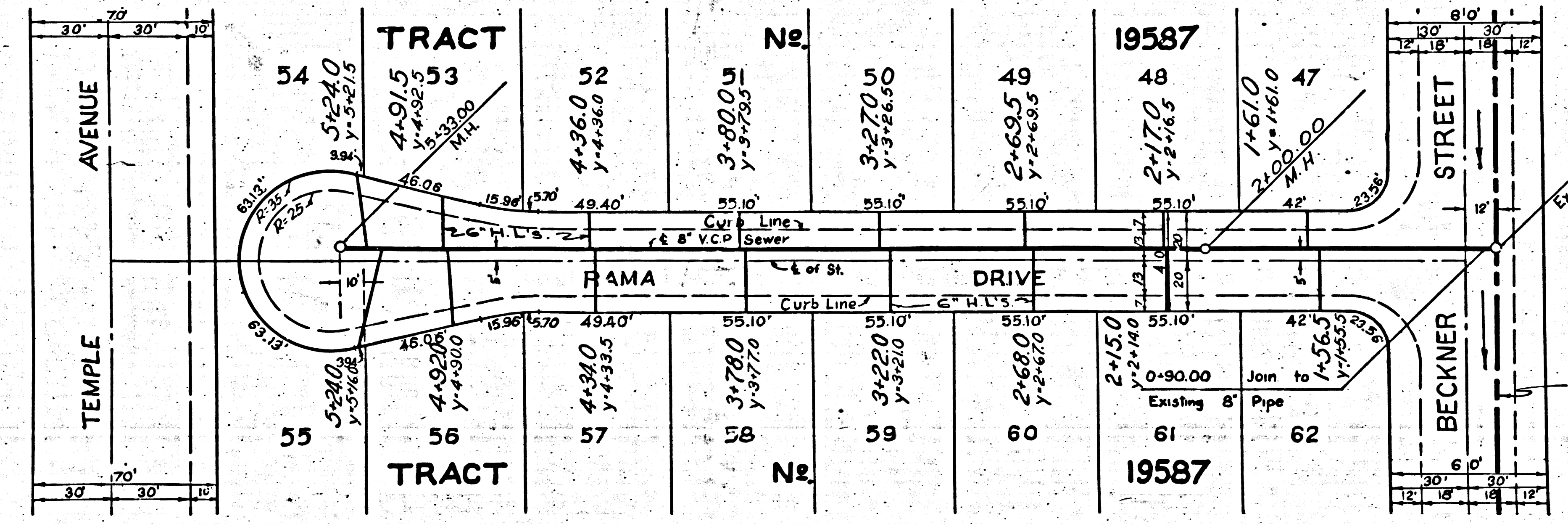
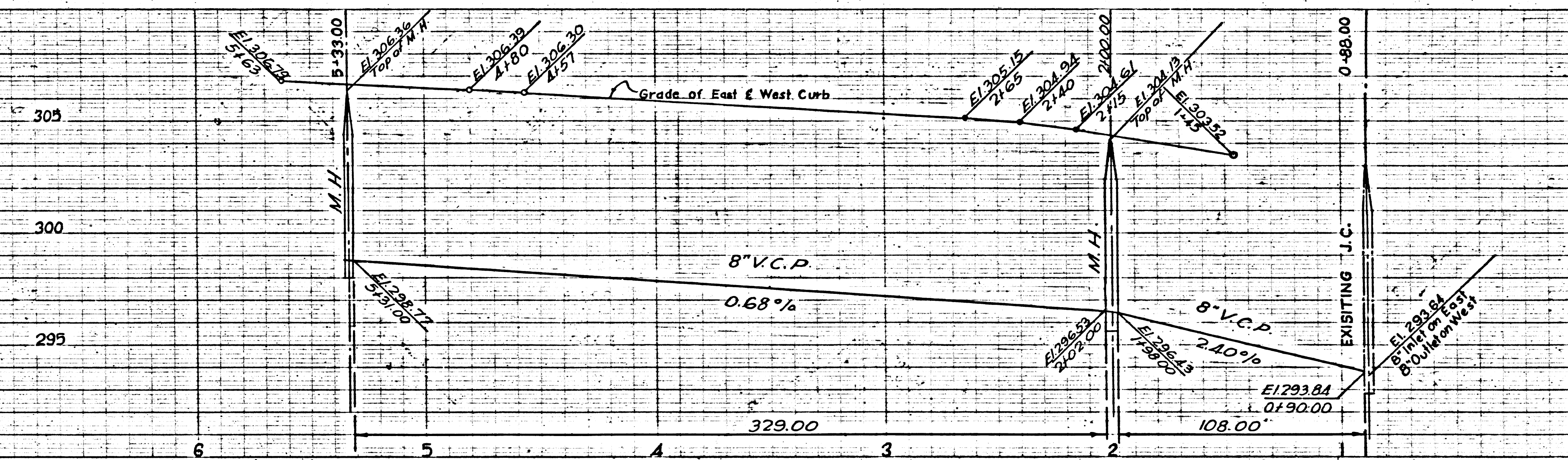
Trim Line 7

BY MEANS OF SURVEYING INSTRUMENTS
AND THE FOLLOWING DATA
AS SHOWN ON THE PLAN

P.C. 3120
J.N. 0997.71
Page 6

NO CHARGE
FOR CONNECTIONS

19,247



Trim Line 7

Trim Line 7