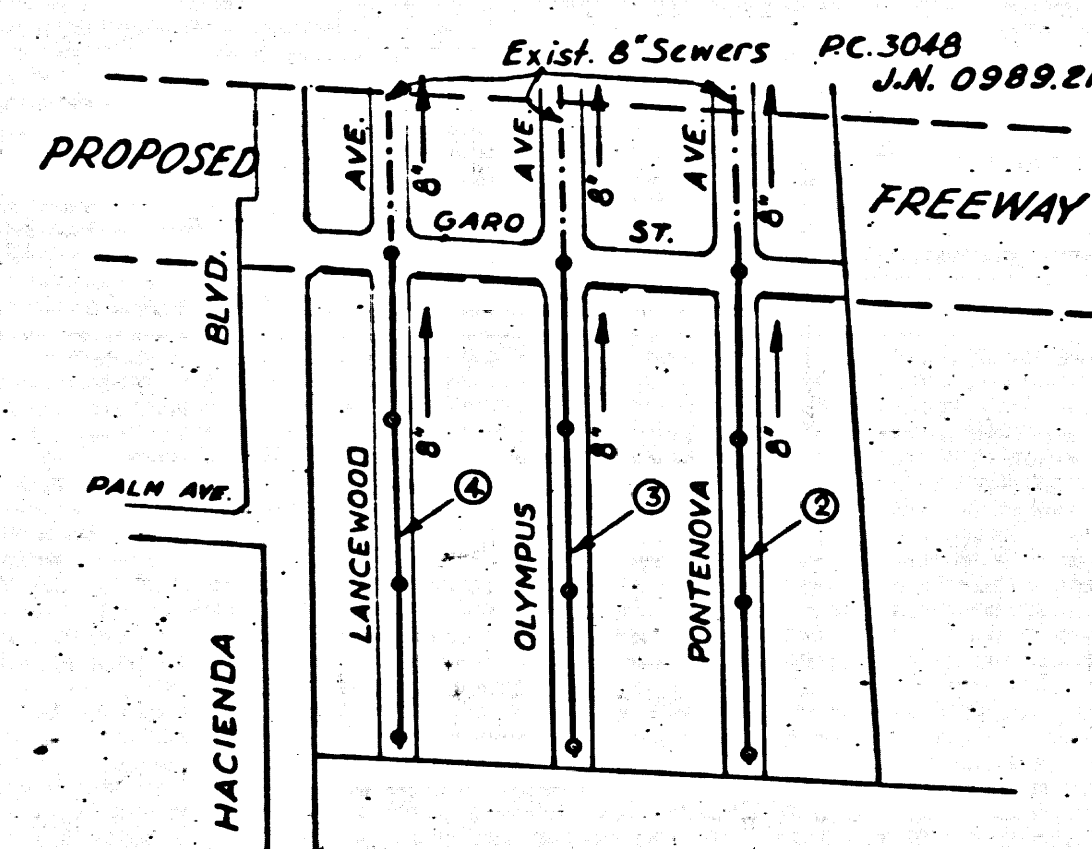


PUENTE BLDG. DIST. N° 2



INDEX MAP
SCALE: 1"=400'
TRACT N° 16891
P.C. 3125 J.N. 1100.01

B.M. S.G. 1046, Page 450 Spk & Lead in
S.E. Cor. of conc. found. of S.P.R.R. X-ing
signal 2 3/4 mi. N. of & of Hacienda Blvd. prod.
N° 6 20' E. north of N° rail, main line
Valley Blvd. X-ing in Puente.
ELEV. 323-480

SHEET N°	PAGES
1	1-4

NO CHARGE FOR
CONNECTIONS
R.B. Kuhn 10-19-54

- NOTE:**
Provide stakes on the property lines or property lines produced at right angles to the sewer line at the center line of each manhole.
No representative of the County Engineer will survey or layout any portion of the work.
The owner or his authorized representative shall furnish the County Engineer with grade sheets and stations for all house laterals and Y branches and shall provide stakes for them at their proper locations with stationing plainly marked. Any change in location shall be requested in writing by the owner or his representative.
No revisions shall be made in these plans without the approval of the County Engineer.
1. Use standard manhole frames and covers, S-a-117.
 2. Use standard strength pipe.
 3. Use cement mortar for all vitrified clay pipe joints.
 4. Resurface all trench within paved area to meet L.A. County Road Dept. or California State Highway Dept. requirements in accordance with permit.
 5. Encase four feet of sewer at points of interference with poles, S-a-119.
 6. House laterals to be constructed with inverts at property line 6 feet below curb grade except as noted.
 7. All structures shall be brick sewer structures, S-a-104.
 8. For allowable leakage test, use Formula No. 1 Spec's., Sec. 51.

PROFILE, ALIGNMENT AND GRADE OF
SANITARY SEWERS
TO BE CONSTRUCTED IN

TRACT N° 16891

PRIVATE CONTRACT NO. 3125
W. S. 38
1 SHEET

Scale: VERT. 1"=4' HORIZ. 1"=40' Aug. 1954

PREPARED IN THE OFFICES OF
KEMMERER ENGR. CO. INC.

Hans C. Thomsen
Rep. C. E. No. 8384
FOR LEGEND SEE PLAN NO. S-a-64

NOTE:
Grades to which this improvement is to be constructed are shown on plans and profiles. Grade points for top of curbs, center line of streets, or center line of alleys are shown by circles on profiles. At all points between designated points the grade shall be established so as to conform to a straight line drawn between said designated points.
Elevations are in feet above U.S.C.S. datum or mean sea level.
This drawing and the data hereon are hereby made a part of the specifications.
Work shall be constructed according to specifications on file in the office of the County Engineer and shall be prosecuted only in the presence of the County Engineer.
Before work can be started, the contractor must obtain a permit to excavate in County streets from the L.A. County Road Dept., 108 W. 2nd St. and make a deposit with the County Engineer, 713 L.A. County Engineering Building, sufficient to cover the cost of construction inspection and record plans.
Approval of this plan by the County of Los Angeles does not constitute a representation as to the accuracy of the location of or the existence or non-existence of any underground utility, pipe, or structure within the limits of this project. This note applies to all sheets.
If work is to be done in a State Highway, a permit must be obtained from the State of California, Division of Highways, 120 South Spring Street.

COUNTY OF LOS ANGELES, CALIFORNIA
Approved, William J. Fox, County Engineer
A.P. Collins
Sanitation Engineer
Checked by *pek* 10-19-54
Office of County Engineer, Rep. C. E. No. 7860

Approved, A. M. Rawe
CHIEF ENGR. CO. SAN. DIST. NO. 21
A. M. Rawe
Office Engineer

PAGE 1
P.C. 3125
J.N. 1100.01

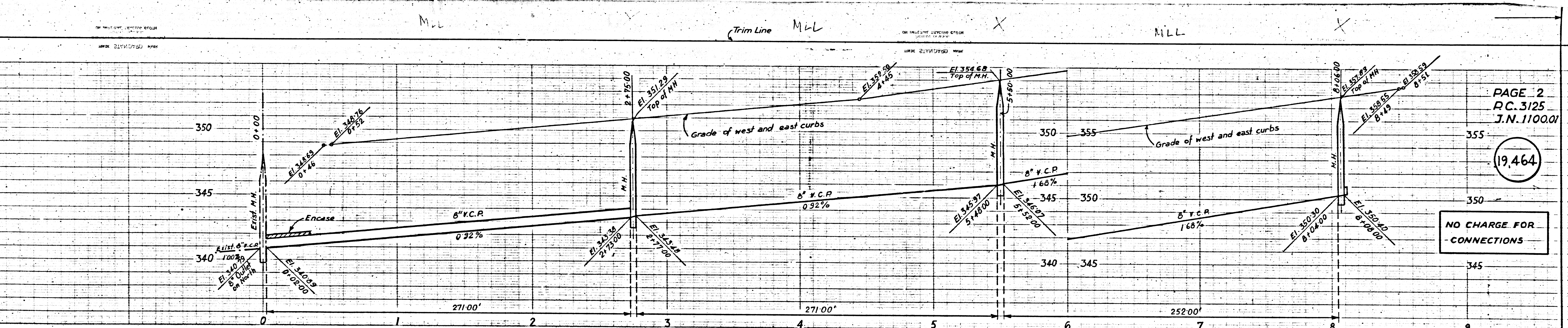
19,463

(4)

TRACT N° 16891

P.C. 3125

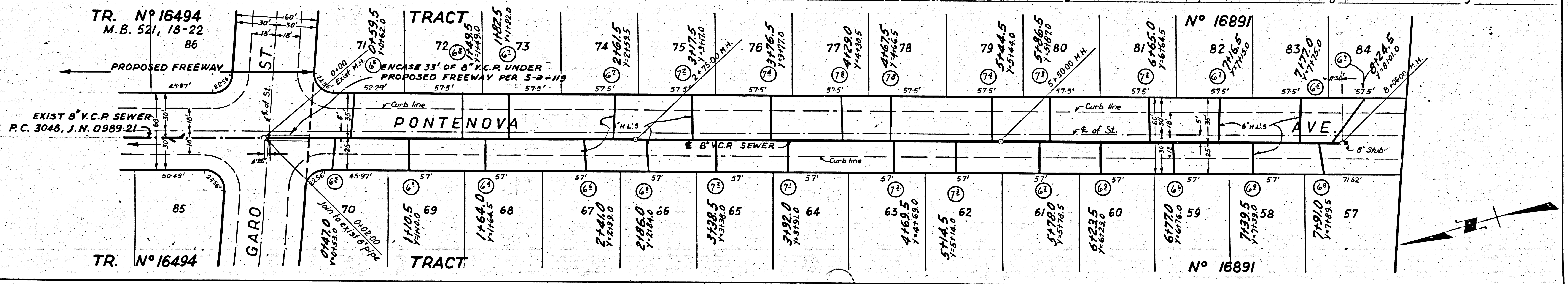
11



PAGE 2
P.C. 3125
J.N. 1100.01

19,464

NO CHARGE FOR
CONNECTIONS



TR. N° 16494
M.B. 521, 18-22
86

EXIST 8" V.C.P. SEWER
P.C. 3048, J.N. 0989-21

TR. N° 16494

TRACT
72
1198.5
1-1198.5
1-1198.5

PONTENOVA

TRACT
69
1198.5
1-1198.5

TRACT
73
1198.5
1-1198.5

TRACT
68
1164.0
1-1164.0

TRACT
65
1198.5
1-1198.5

TRACT
74
1198.5
1-1198.5

TRACT
67
1164.0
1-1164.0

TRACT
64
1198.0
1-1198.0

TRACT
75
1198.5
1-1198.5

TRACT
66
1198.5
1-1198.5

TRACT
63
1168.5
1-1168.5

TRACT
76
1198.5
1-1198.5

TRACT
62
1198.5
1-1198.5

TRACT
62
1198.5
1-1198.5

TRACT
77
1198.5
1-1198.5

TRACT
63
1168.5
1-1168.5

TRACT
62
1198.5
1-1198.5

TRACT
78
1198.5
1-1198.5

TRACT
63
1168.5
1-1168.5

TRACT
62
1198.5
1-1198.5

TRACT
79
1198.5
1-1198.5

TRACT
60
1198.5
1-1198.5

TRACT
60
1198.5
1-1198.5

TRACT
80
1198.5
1-1198.5

TRACT
59
1198.5
1-1198.5

TRACT
59
1198.5
1-1198.5

TRACT
81
1198.5
1-1198.5

TRACT
58
1198.5
1-1198.5

TRACT
58
1198.5
1-1198.5

TRACT
82
1198.5
1-1198.5

TRACT
57
1198.5
1-1198.5

TRACT
57
1198.5
1-1198.5

TRACT
83
1198.5
1-1198.5

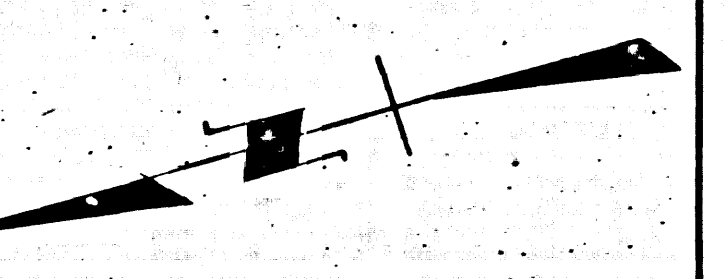
TRACT
57
1198.5
1-1198.5

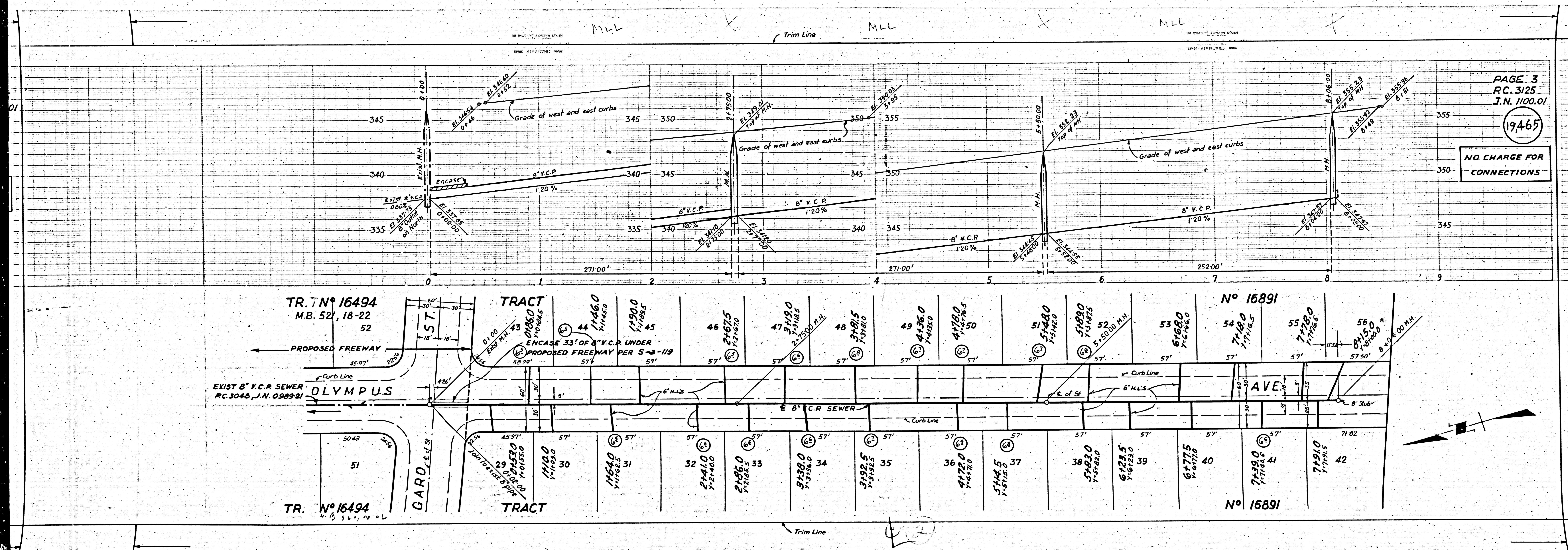
TRACT
57
1198.5
1-1198.5

TRACT
84
1198.5
1-1198.5

TRACT
57
1198.5
1-1198.5

TRACT
57
1198.5
1-1198.5





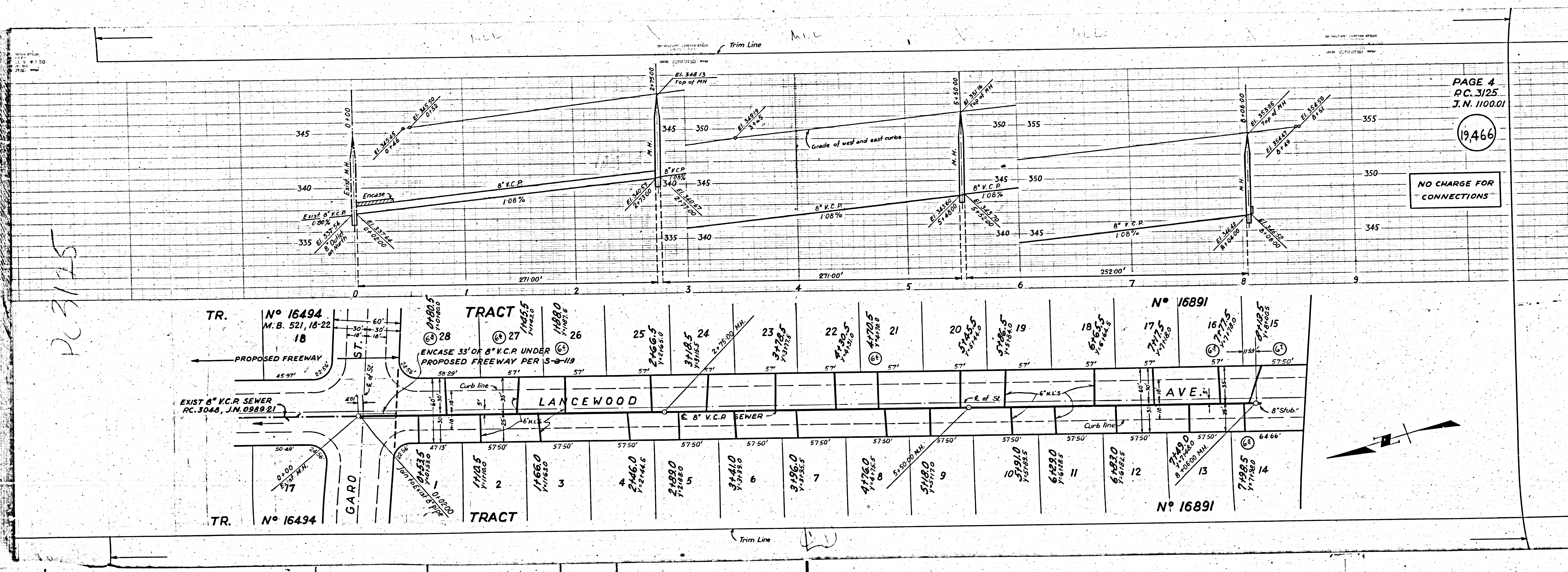
PAGE 3
P.C. 3125
J.N. 1100.01

1946

NO CHARGE FOR
CONNECTIONS

19466

NO CHARGE FOR CONNECTIONS



PC 3125

Trim Line