

B.M. Rd. Dept. SY 2510 Elev. 84.344  
 Rosecrans Ave. & Bluegrove St. NW Cor.  
 L.F.T. in curb 7' West of curb return.

Trim Line  
**BELLFLOWER BLDG. DIST. N° 4**

- NOTE:**  
 Provide stakes on the property lines or property lines produced at right angles to the sewer line at the center line of each manhole.  
 No representative of the County Engineer will survey or layout any portion of the work.  
 The owner or his authorized representative shall furnish the County Engineer with grade sheets and stations for all house laterals and Y branches and shall provide stakes for them at their proper locations with stationing plainly marked. Any change in location shall be requested in writing by the owner or his representative.  
 No revisions shall be made in these plans without the approval of the County Engineer.
1. Use standard manhole frames and covers, S-a-117.
  2. Use standard strength pipe ~~except as noted~~.
  3. Use cement mortar for all vitrified clay pipe joints.
  4. Resurface all trench within paved area to meet L.A. County Road Dept. or California State Highway Dept. requirements in accordance with permit.
  5. Encase four feet of sewer at points of interference with poles, S-a-119.
  6. ~~Manholes shall be constructed with inverts at property line \_\_\_\_\_ feet below curb grade.~~
  7. All structures shall be brick sewer structures, S-a-104.
  8. For allowable leakage test, use Formula No. \_\_\_\_\_, Spec's., Sec. 51.
  9. Manhole tops in unimproved Rights-Of-Way to be 4" above finish grade.

PROFILE, ALIGNMENT AND GRADE OF  
**SANITARY SEWERS**  
 TO BE CONSTRUCTED IN  
**RIGHT-OF-WAY**  
**NORTH OF**  
**ROSECRANS AVENUE**  
 PRIVATE CONTRACT NO. 3132  
 W. S. 33  
 1 SHEET

P.C. 3132  
 J.N. 0999.01  
 PAGE 1

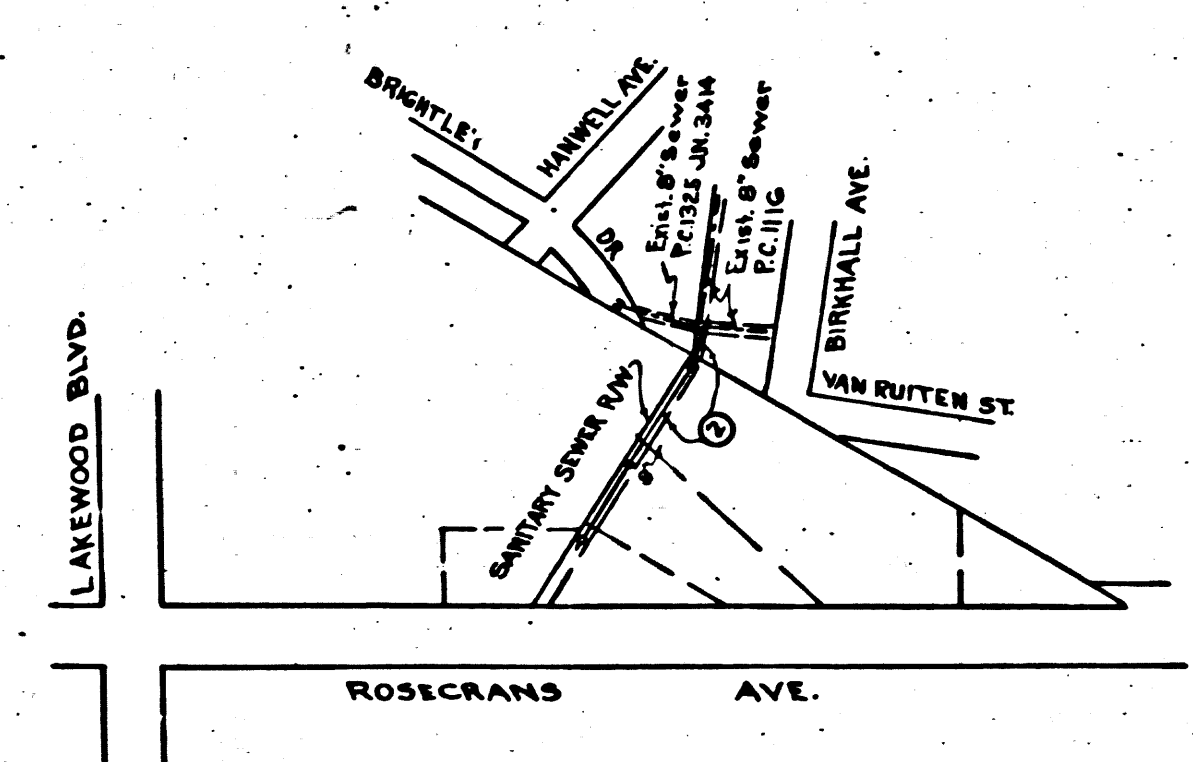
Scale: VERT. 1"=4'  
 HORIZ. 1"=40'  
 AUGUST, 1954  
 PREPARED IN THE OFFICES OF  
**VALLEY ENGINEERING CO.**

*J. J. Manning*  
 Reg. C. E. No. 7976  
 FOR LEGEND SEE PLAN NO. S-a-64

**NOTE:**  
 Grades to which this improvement is to be constructed are shown on plans and profiles. Grade points for top of curbs, center line of streets, or center line of alleys are shown by circles on profiles. At all points between designated points the grade shall be established so as to conform to a straight line drawn between said designated points.  
 Elevations are in feet above U.S.G.S. datum or mean sea level.  
 This drawing and the data hereon are hereby made a part of the specifications.  
 Work shall be constructed according to specifications on file in the office of the County Engineer and shall be prosecuted only in the presence of the County Engineer.  
 Before work can be started, the contractor must obtain a permit to excavate in County streets from the L.A. County Road Dept., 108 W. 2nd St. and make a deposit with the County Engineer, 733 L.A. County Engineering Building, sufficient to cover the cost of construction inspection and record plans.  
 Approval of this plan by the County of Los Angeles does not constitute a representation as to the accuracy of the location of or the existence or non-existence of any underground utility, pipe, or structure within the limits of this project. This note applies to all sheets.  
 If work is to be done in a State Highway, a permit must be obtained from the State of California, Division of Highways, 120 South Spring Street.

**COUNTY OF LOS ANGELES, CALIFORNIA**  
 Approved, William J. Fox, County Engineer  
 Approved, A. M. Rawn  
 CHIEF ENGR., SAN. DIST. NO. 2  
*A. M. Rawn*  
 Office Engineer  
 Checked By: *R. J. ...* 11-15-54  
 Office of County Engineer, Reg. C. E. No. 78 (a) 2

SHEET	NO.
1	1-2



INDEX MAP  
 SCALE: 1"=400'  
 P.C. 3132 J.N. 0999.01

**NO CHARGE**  
**FOR CONNECTIONS**  
*R. J. ... 11-15-54*

*checked 11-23-54 W. J. ...*

Trim Line

19,318

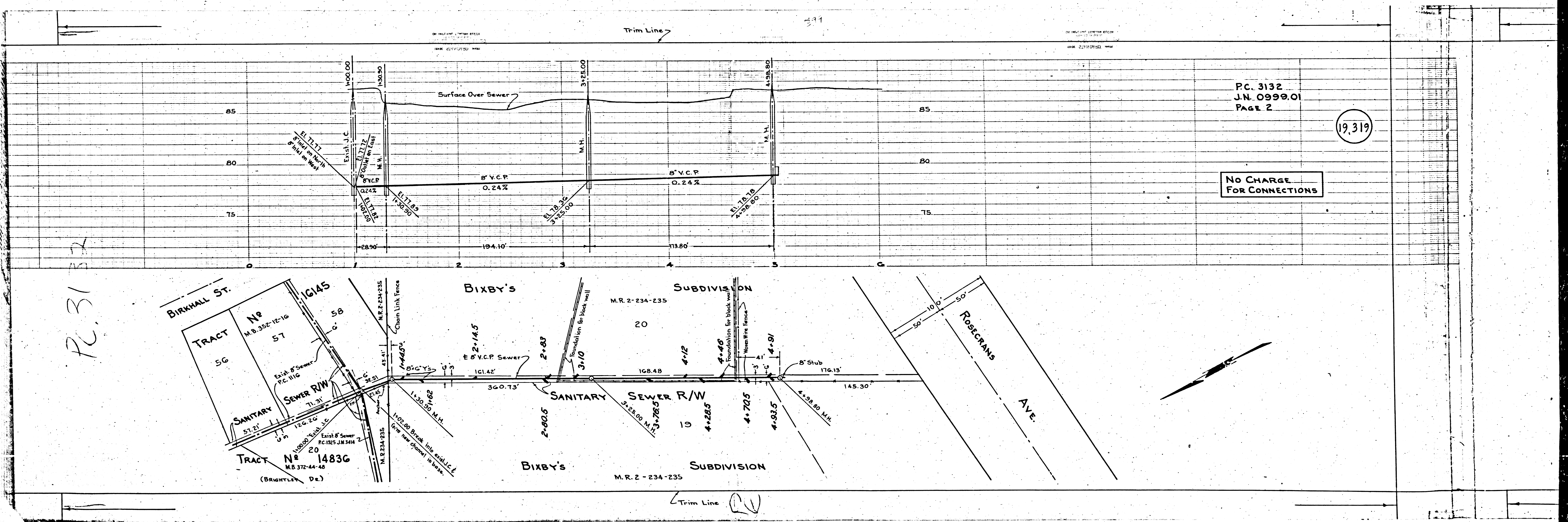
(E)

P.C. 3132  
 J.N. 0999.01  
 PAGE 1

8762



PC 3132



PC. 3132  
J.N. 0999.01  
PAGE 2

19,319

NO CHARGE  
FOR CONNECTIONS

Trim Line