

(EAST LOS ANGELES BLDG. DIST. NO. 6)

PROFILE ALIGNMENT AND GRADE OF  
SANITARY SEWERS  
TO BE CONSTRUCTED IN

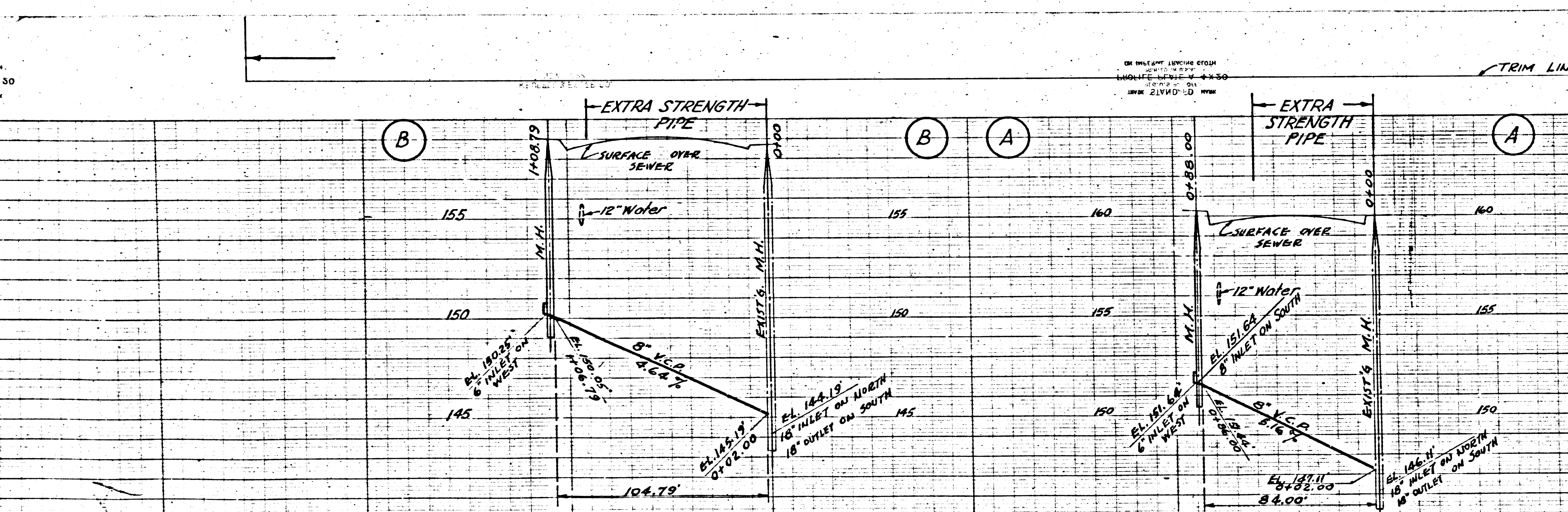
RANCHO SAN ANTONIO

PRIVATE CONTRACT NO. 3144

1 SHEET

DATE: AUG. 1954  
PREPARED IN THE OFFICES OF  
BECHTEL CORPORATION  
By Robert H. Weight  
REG. C.E. NO. 6050

- NOTE:  
PROVIDE STAKES ON THE PROPERTY LINES OR PROPERTY LINES PRODUCED AT RIGHT ANGLES TO THE SEWER LINE AT THE CENTER LINE OF EACH MANHOLE.  
NO REPRESENTATIVE OF THE COUNTY ENGINEER WILL SURVEY OR LAYOUT ANY PORTION OF THE WORK. THE OWNER OR HIS AUTHORIZED REPRESENTATIVE SHALL FURNISH THE COUNTY ENGINEER WITH GRADE SHEETS AND STATIONS FOR ALL HOUSE LATERALS AND Y BRANCHES AND SHALL PROVIDE STAKES FOR THEM AT THEIR PROPER LOCATIONS WITH STATIONING PLAINLY MARKED. ANY CHANGE IN LOCATION SHALL BE REQUESTED IN WRITING BY THE OWNER OR HIS REPRESENTATIVE.  
NO REVISIONS SHALL BE MADE IN THESE PLANS WITHOUT THE APPROVAL OF THE COUNTY ENGINEER.
1. USE STANDARD MANHOLE FRAMES AND COVERS, 5'-0" HT.
  2. USE STANDARD STRENGTH PIPE EXCEPT AS NOTED.
  3. USE CEMENT MORTAR FOR ALL VITRIFIED CLAY PIPE JOINTS.
  4. RESURFACE ALL TRENCH WITHIN PAVED AREA TO MEET L.A. COUNTY ROAD DEPT. OR CALIF. STATE HIGHWAY DEPT. REQUIREMENTS IN ACCORDANCE WITH PERMIT.
  5. ENCASE FOUR FEET OF SEWER AT POINTS OF INTERFERENCE WITH POLES, 5'-0" HT.
  6. HOUSE LATERALS TO BE CONSTRUCTED WITH INVERTS IN PROPERTY LINES 6 FEET BELOW CURB GRADE EXCEPT AS NOTED.
  7. ALL STRUCTURES SHALL BE BENCH SEWER STRUCTURES, 5'-0" HT.
  8. MANHOLE TOPS IN UNIMPROVED RIGHTS-OF-WAY TO BE 6" ABOVE FINISH GRADE.
  9. FOR ALLOWABLE LEAKAGE TEST, USE FORMULA:  $N = \frac{L}{100} \times S$ , SPEC. SEC. 51

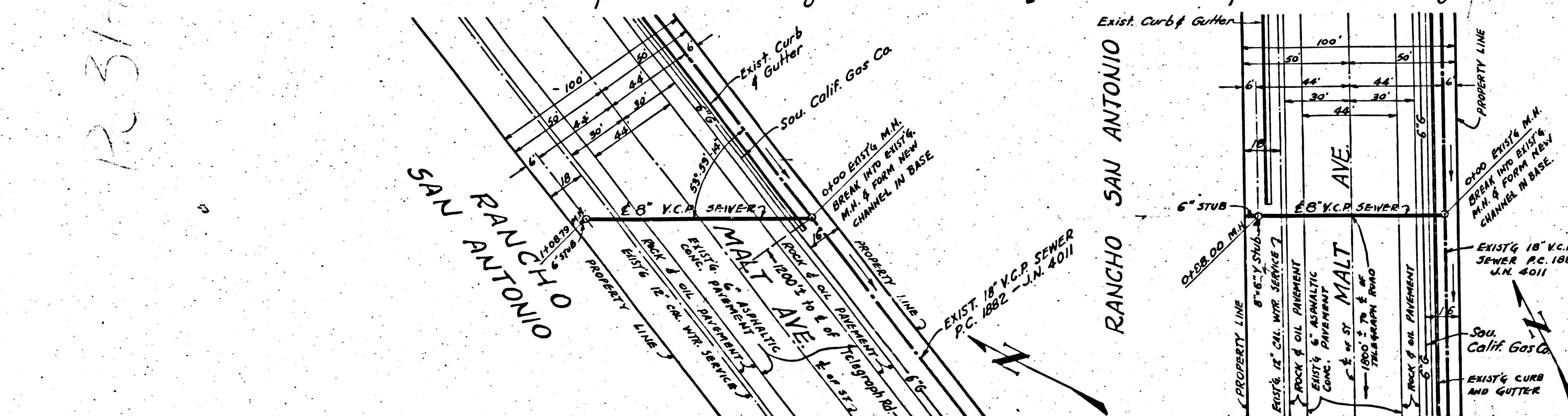
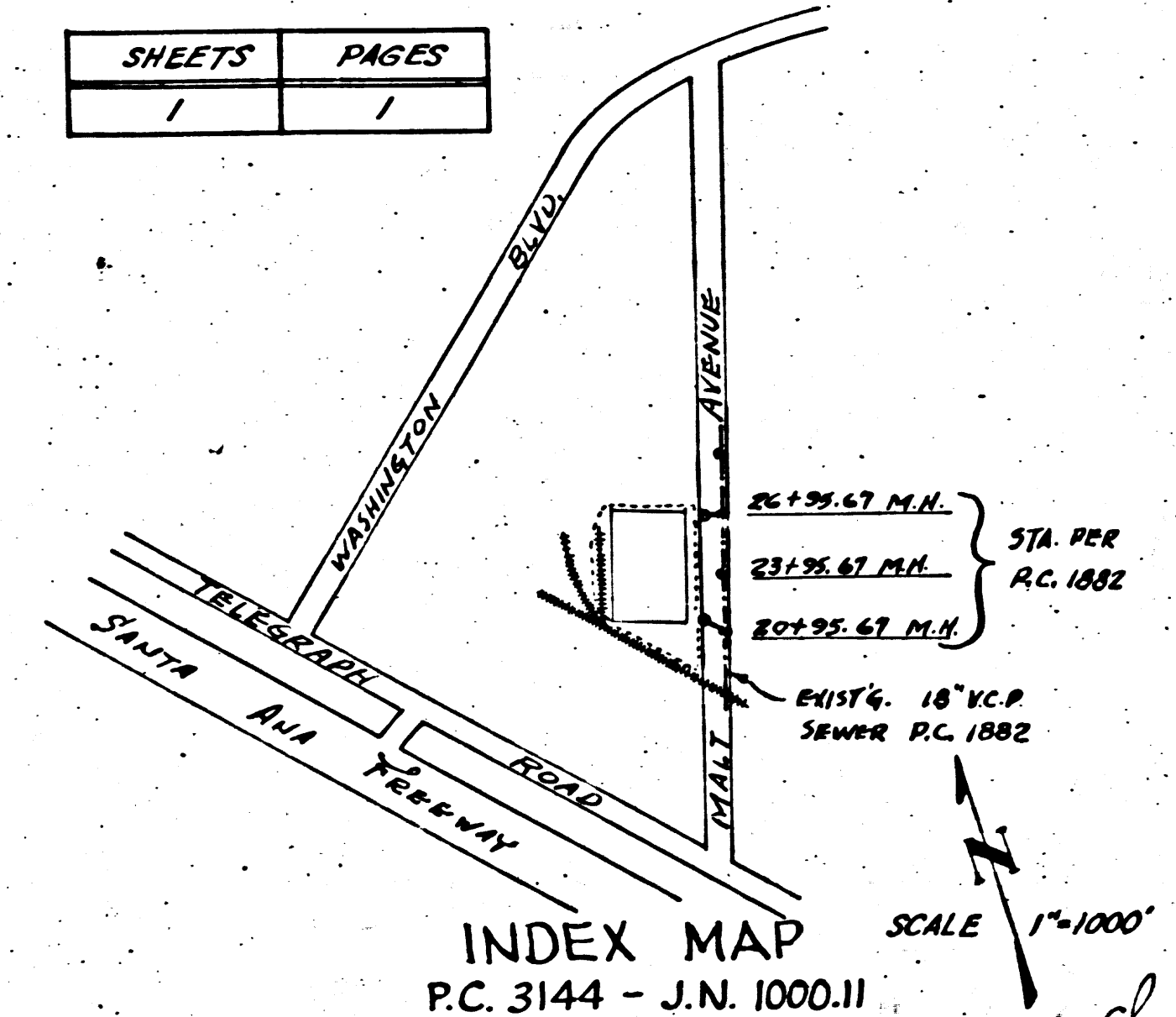


NOTE:  
GRADES TO WHICH THIS IMPROVEMENT IS TO BE CONSTRUCTED ARE SHOWN ON PLANS AND PROFILES. GRADE POINTS FOR TOP OF CURBS, CENTER LINE OF STREETS OR CENTER LINE OF ALLEYS ARE SHOWN BY CIRCLES ON PROFILES. AT ALL POINTS BETWEEN DESIGNATED POINTS THE GRADE SHALL BE ESTABLISHED SO AS TO CONFORM TO A STRAIGHT LINE DRAWN BETWEEN SAID DESIGNATED POINTS.  
ELEVATIONS ARE IN FEET ABOVE U.S.G.S. DATUM OR MEAN SEA LEVEL.  
THIS DRAWING AND THE DATA HEREON ARE HEREBY MADE A PART OF THE SPECIFICATIONS.  
WORK SHALL BE CONSTRUCTED ACCORDING TO SPECIFICATIONS ON FILE IN THE OFFICE OF THE COUNTY ENGINEER AND SHALL BE SUPERVISED ONLY IN THE OFFICE OF THE COUNTY ENGINEER.  
TRENCH WORK CAN BE STARTED THE CONTRACTOR MUST OBTAIN A PERMIT TO DEPOSIT IN COUNTY STREETS FROM THE L.A. COUNTY ROAD DEPT., 108 W. 2ND ST. AND MAKE A DEPOSIT WITH THE COUNTY ENGINEER, 733 L.A. COUNTY ENGINEERING BUILDING, SUFFICIENT TO COVER THE COST OF CONSTRUCTION INSPECTION AND RECORD PLANS.  
APPROVAL OF THIS PLAN BY THE COUNTY OF LOS ANGELES DOES NOT CONSTITUTE A REPRESENTATION AS TO THE ACCURACY OF THE LOCATION OF OR THE EXISTENCE OF ANY UNDERGROUND UTILITY PIPE, OR STRUCTURE WITHIN THE LIMITS OF THIS PROJECT. THIS NOTE APPLIES TO ALL SHEETS IF WORK IS TO BE DONE IN A STATE HIGHWAY, A PERMIT MUST BE OBTAINED FROM THE STATE OF CALIFORNIA, DIVISION OF HIGHWAYS, 120 SOUTH SPRING STREET.

COUNTY OF LOS ANGELES, CALIFORNIA  
APPROVED, WILLIAM J. FOX, COUNTY ENGINEER  
APPROVED, A.M. RAWN  
CHIEF ENGINEER, SANITARY DIVISION  
BY A.P. Collins  
SANITARY ENGINEER  
CHECKED BY J.P. Williams  
OFFICE ENGINEER  
OFFICE OF COUNTY ENGINEER, REG. C.E. NO. 7860

B.M. TOP OF NORTH RAIL AT S.F. R.R. CROSSING EL. 158.59'

NO CHARGE FOR CONNECTIONS  
R.H. Williams 7-22-54



APPROVED BY: *William J. Fox*  
WILLIAM J. FOX, COUNTY ENGINEER

Checked 11-18-54 *W. J. Fox*

PC 3144  
J.N. 1000.11  
PAGE 1  
19,302  
PC 3144  
11,000.11  
PC 3144