

C. No. 1148
V. 1000.51
PAGE 2

CON
E
ATED

20,520

No. 2642
32-63-64

SEWER R/W

12" of 6" H.L.
gutter per S-a-19

12" of 6" H.L.
gutter per S-a-19

C Page Trim Line

C Page Trim Line 7

B.M. 5Y3137 El. 80.88
N.E. Cor. Redonda Beach Blvd. & Avalon Blvd.
Ld. & B.N. in N. Curb 32' E. of Curb Return

No Sewers required for
lots 1 thru 8 on Tarrant Ave.
Per Planning Commission

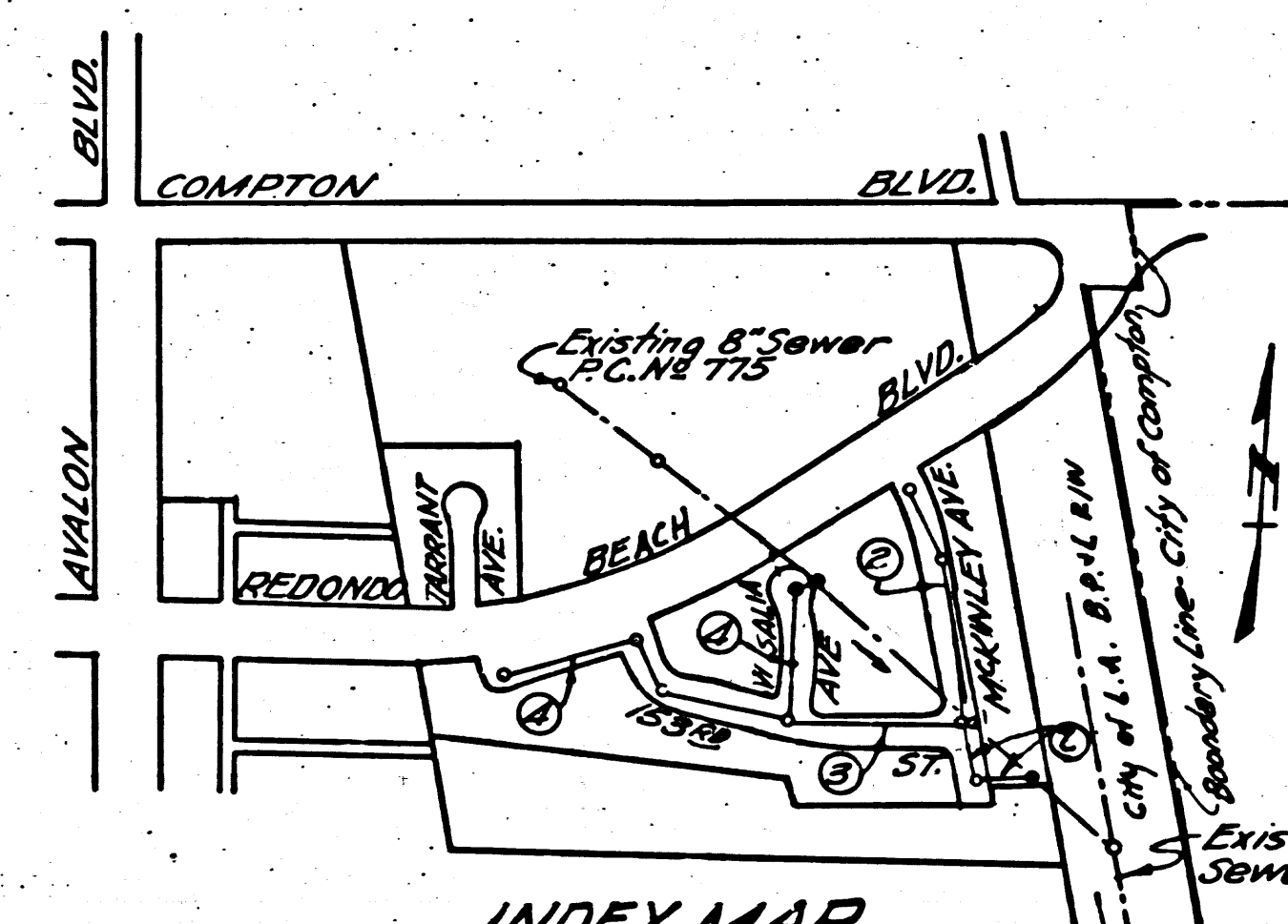
Note: Existing Sewer to be maintained
during construction. Install sewer
in McKinley Ave northwesterly of 153 St.
last.

SHEET No.	PAGES
1	1-6

Checked 6-2-55 M. H. Green

Trim Line 7
LENNOX BLDG. DIST. No 7

- NOTE:
Provide stakes on the property lines or property lines produced at right angles to the sewer line at the center line of each manhole.
No representative of the County Engineer will survey or layout any portion of the work. The owner or his authorized representative shall furnish the County Engineer with grade sheets and stations for all house laterals and Y branches and shall provide stakes for them at their proper locations with stationing plainly marked. Any change in location shall be requested in writing by the owner or his representative.
No revisions shall be made in these plans without the approval of the County Engineer.
1. Use standard manhole frames and covers, S-a-117. Except as noted.
 2. Use standard strength pipe except as noted.
 3. Use cement mortar for all vitrified clay pipe joints.
 4. Resurface all trench within paved area to meet L.A. County Road Dept. or Calif. State Highway Dept. requirements in accordance with permit.
 5. Encase four feet of sewer at points of interference with poles, S-a-119.
 6. House laterals to be constructed with inverts at property line.....feet below curb grade except as noted.
 7. All structures shall be brick sewer structures, S-a-104. Except as noted.
 8. Manhole tops in unimproved Rights-Of-Way to be 6" above finish grade.
 9. For allowable leakage test, use Formula No..... Specs., Sec. 51.



INDEX MAP
SCALE 1" = 400'
TRACT No 19243
P.C. 3148 - J.N. 1000.51

C Trim Line

PROFILE, ALIGNMENT AND GRADE OF
SANITARY SEWERS
TO BE CONSTRUCTED IN

TRACT No 19243

PRIVATE CONTRACT NO. 3148
W.S. 26

SHEET 1 OF 1 SHEETS
Scale: VERT. 1" = 4'
HORIZ. 1" = 40'

PREPARED IN THE OFFICES OF
HARRY GILBERT
Reg. C. E. No. 1727
FOR LEGEND SEE PLAN NO. S-a-64

P.C. 3148
J.N. 1000.51
PAGE 1

20519

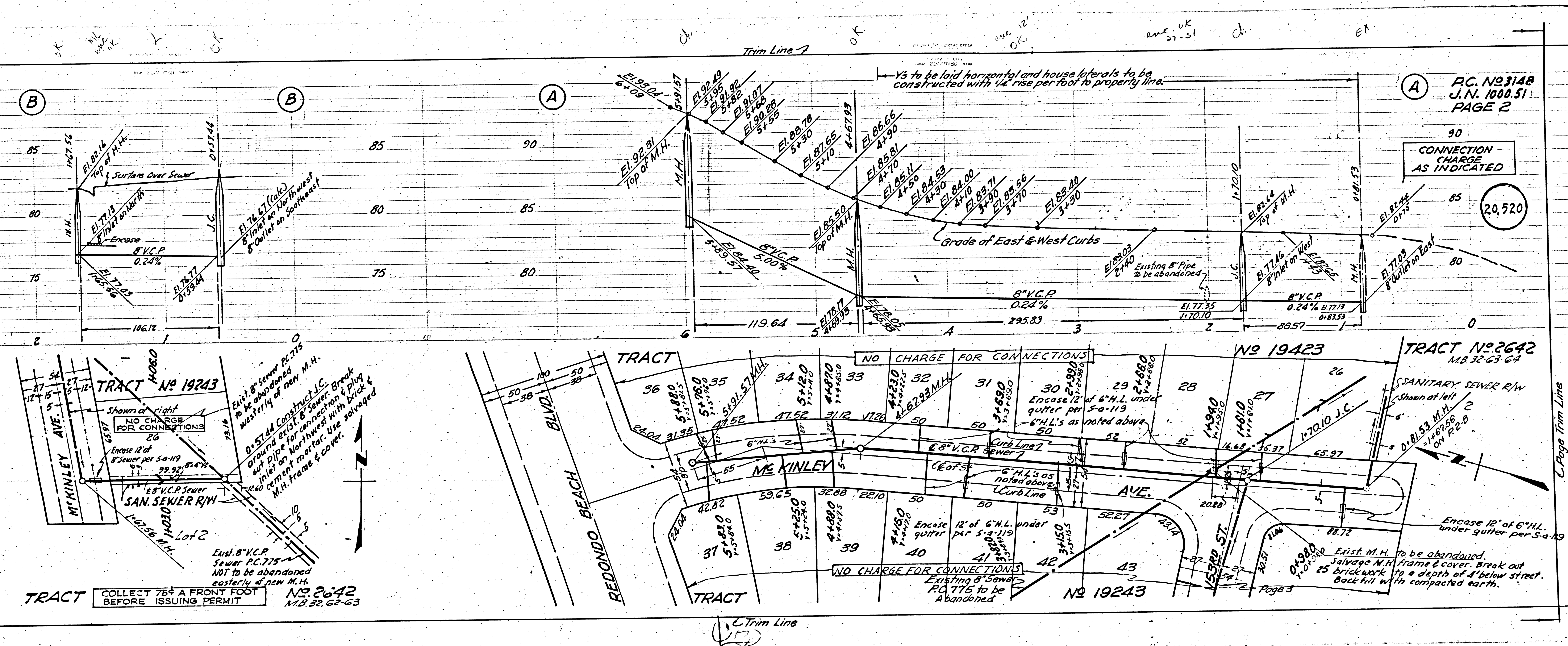
NOTE:
Grades to which this improvement is to be constructed are shown on plans and profiles. Grade points for top of curbs, center line of streets, or center line of alleys are shown by circles on profiles. At all points between designated points the grade shall be established so as to conform to a straight line drawn between said designated points.
Elevations are in feet above U.S.G.S. datum or mean sea level.
This drawing and the data hereon are hereby made a part of the specifications. Work shall be constructed according to specifications on file in the office of the County Engineer and shall be prosecuted only in the presence of the County Engineer.
Before work can be started, the contractor must obtain a permit to excavate in County streets from the L.A. County Road Dept., 108 W. 2nd St. and make a deposit with the County Engineer, 733 L.A. County Engineering Building, sufficient to cover the cost of construction inspection and record plans.
Approval of this plan by the County of Los Angeles does not constitute a representation as to the accuracy of the location of or the existence or non-existence of any underground utility, pipe, or structure within the limits of this project. This note applies to all sheets.
If work is to be done in a State Highway, a permit must be obtained from the State of California, Division of Highways, 120 South Spring Street.

COUNTY OF LOS ANGELES, CALIFORNIA
Approved, William J. Fox, County Engineer
Approved, A. M. Rown
CHIEF ENGR. CO. SAN. DIST. NO. 8
Checked By: [Signature] 12-28-54
Office of County Engineer, Reg. C. E. No. 2566

C Page Trim Line

RE

NO 3143
1000.51
E 3
LARGE CONNECTIONS
20,521



P.C. NO 3148
J.N. 1000.51
PAGE 2

CONNECTION CHARGE AS INDICATED

20,520

TRACT COLLECT 75¢ A FRONT FOOT BEFORE ISSUING PERMIT NO 2642
M.B. 32, 62-63

NO CHARGE FOR CONNECTIONS
EXISTING 8" SEWER P.C. 775 TO BE ABANDONED

EXIST. M.H. TO BE ABANDONED. SALVAGE M.H. FRAME & COVER. BREAK OUT TO A DEPTH OF 4' BELOW STREET. BACK FILL WITH COMPACTED EARTH.

Page 3

Trim Line

Page Trim Line

Page Trim Line

Page Trim Line

Page Trim Line 7

P.C. No 3148
J.N. 1000.51
PAGE 4

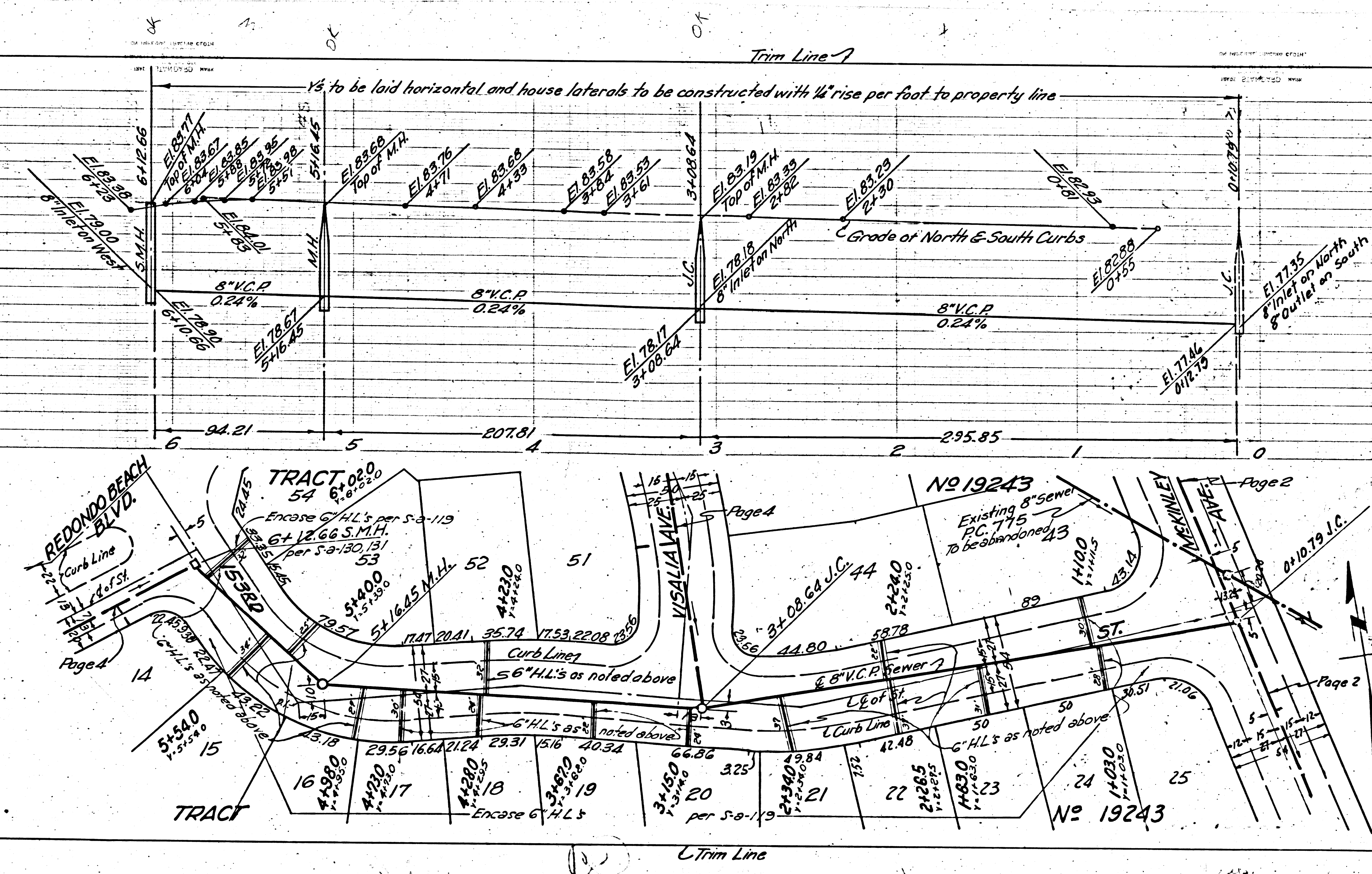
NO CHARGE
FOR
CONNECTIONS

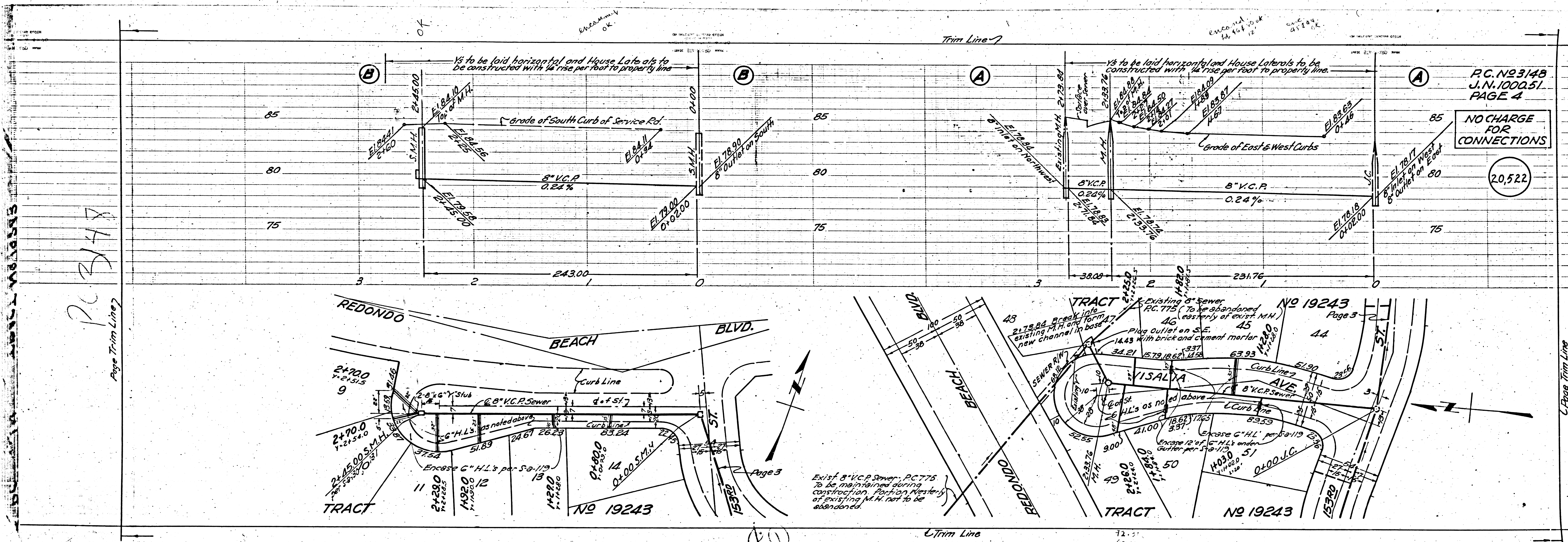
20,522

P.C. No 3148
J.N. 1000.51
PAGE 3

NO CHARGE
FOR CONNECTIONS

20,521



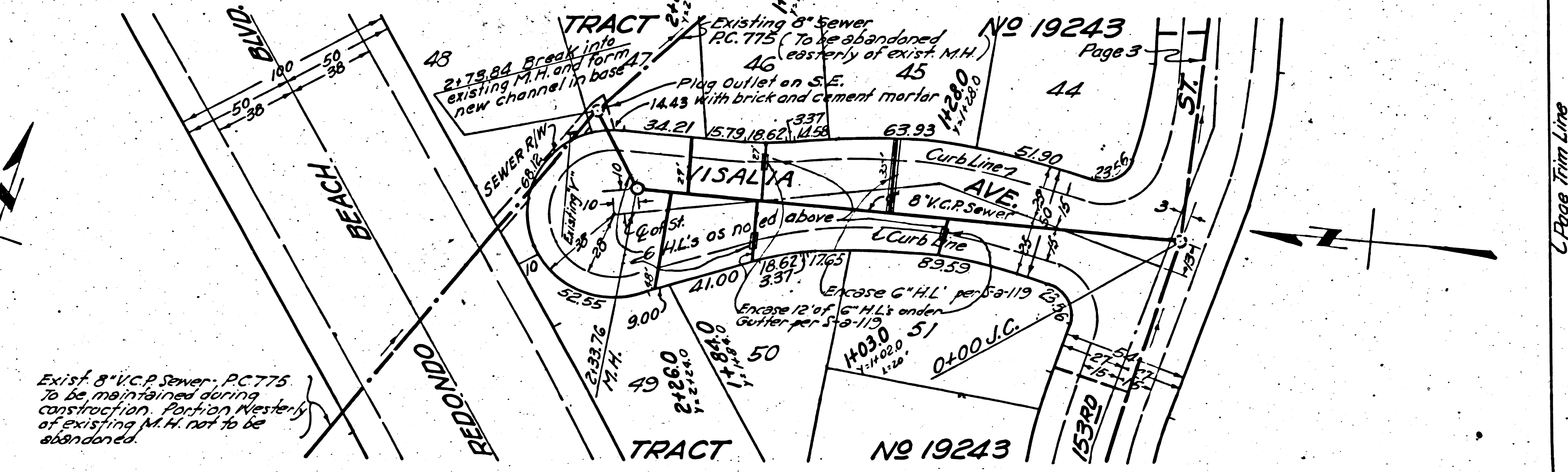
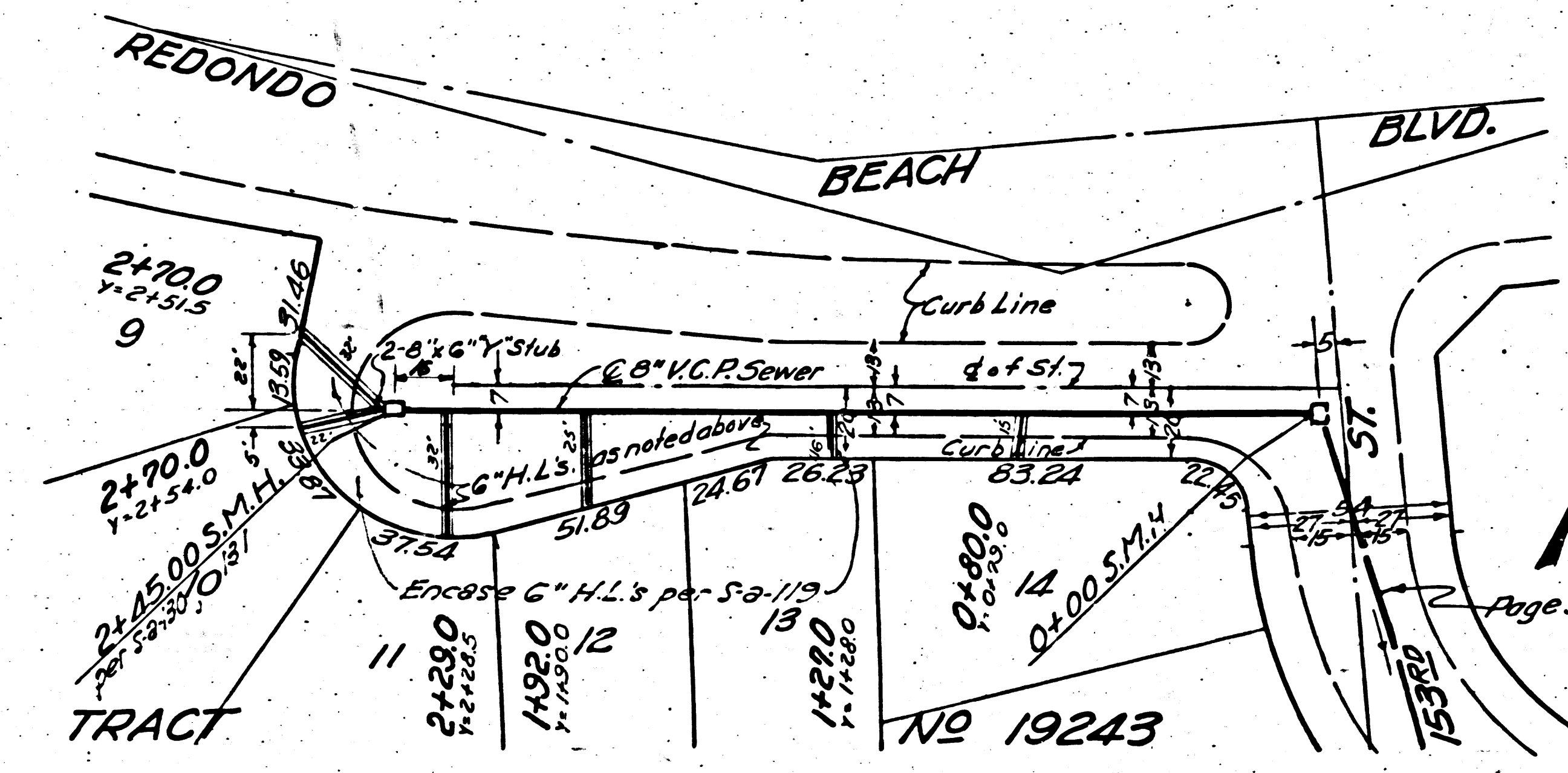


P.C. NO 3143
J.N. 100.51
PAGE 4

NO CHARGE FOR CONNECTIONS

20,522

PC 3143
Page Trim Line 7



Exist 8" V.C.P. Sewer, P.C. 775 to be maintained during construction. East on West side of existing M.H. not to be abandoned.

Page Trim Line 7

Page Trim Line 7

Page Trim Line 7