

P.C. 3154
J.N. 1001.31
PAGE 2

19,017

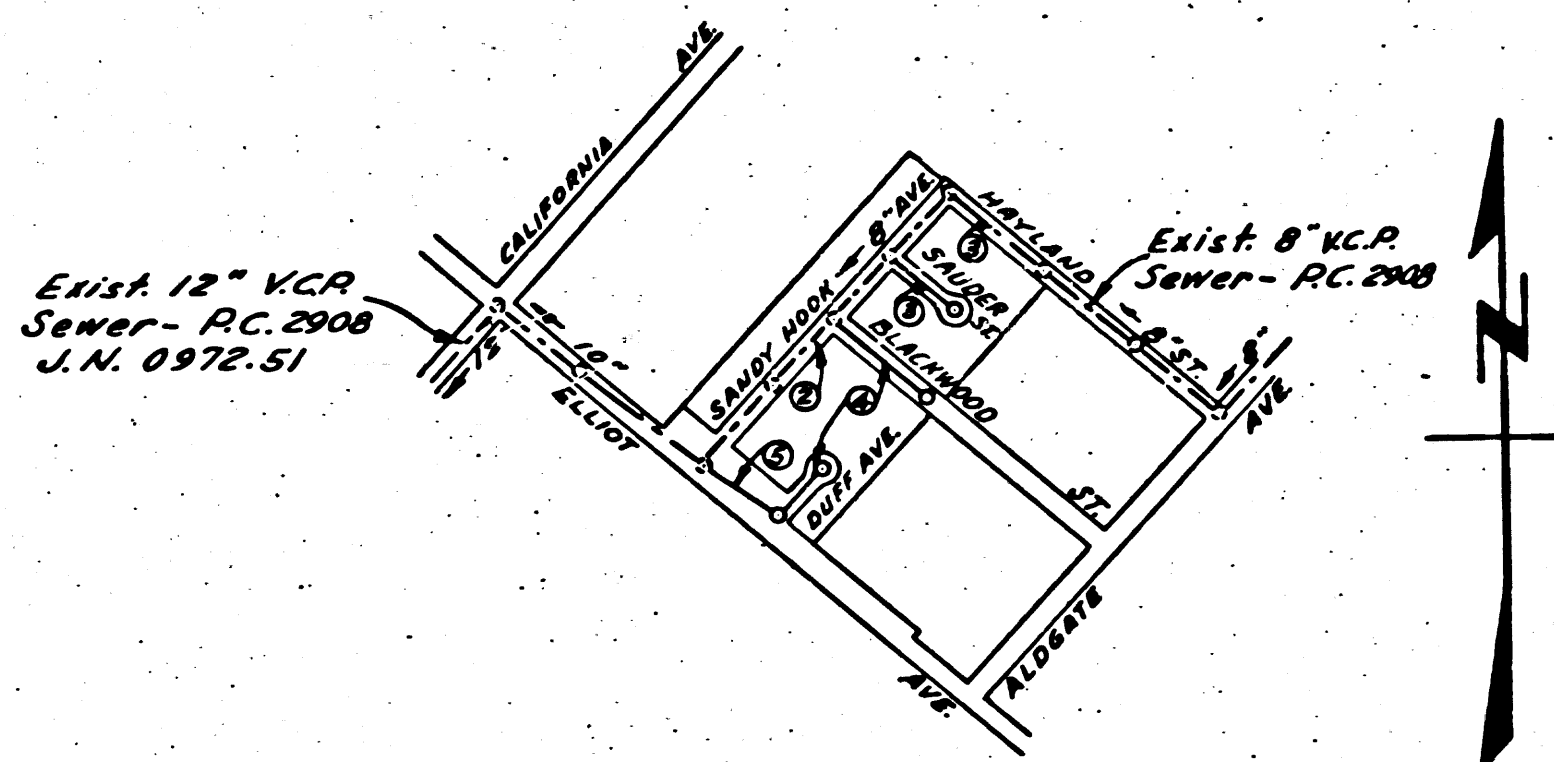
B.M. 56.110 El. 338.098 Lead & bench
nail in N.E. corner of cone. 3x5
wain box @ S.W. corner of
Fairgrove & Urruh ± 25' S. of E.
Fairgrove & ± 85' W of E. Glendora

SHEET N ^o	PAGES
1	1-5

NO CHARGE FOR
CONNECTIONS
R. K. Kuban 9-7-54

Trim Line
PUENTE BLDG. DIST. N^o 2

- NOTE:**
Provide stakes on the property lines or property lines produced at right angles to the sewer line at the center line of each manhole.
No representative of the County Engineer will survey or layout any portion of the work.
The owner or his authorized representative shall furnish the County Engineer with grade sheets and stations for all house laterals and Y branches and shall provide stakes for them at their proper locations with stationing plainly marked. Any change in location shall be requested in writing by the owner or his representative.
No revisions shall be made in these plans without the approval of the County Engineer.
1. Use standard manhole frames and covers, S-a-117.
 2. Use standard strength pipe except as noted.
 3. Use cement mortar for all vitrified clay pipe joints.
 4. Resurface all trench within paved area to meet L.A. County Road Dept. or California State Highway Dept. requirements in accordance with permit.
 5. Encase four feet of sewer at points of interference with poles, S-a-119.
 6. House laterals to be constructed with inverts at property line 6 feet below curb grade.
 7. All structures shall be brick sewer structures, S-a-104.
 8. For allowable leakage test, use Formula No. 1 Spec's, Sec. 51.
 9. Manhole tops in unimproved Rights-Of-Way to be 6" above finish grade.



INDEX MAP
SCALE: 1"=600'
TRACT N^o 17967
P.C. 3154 J.N. 1001.31

checked 10-11-54 *McLaren*

PROFILE, ALIGNMENT AND GRADE OF
SANITARY SEWERS
TO BE CONSTRUCTED IN
TRACT N^o 17967

P.C. 3154
J.N. 1001.31
PAGE 1

19,016

PRIVATE CONTRACT NO. 3154
W. S. 38
ONE SHEET
Scale: VERT. 1"=4'
HORIZ. 1"=40'
AUGUST 1954

PREPARED UNDER THE
SUPERVISION OF
Henry Jones Reg. C. E. No. 4444
FOR LEGEND SEE PLAN NO. S-a-64

NOTE:
Grades to which this improvement is to be constructed are shown on plans and profiles. Grade points for top of curbs, center line of streets, or center line of alleys are shown by circles on profiles. At all points between designated points the grade shall be established so as to conform to a straight line drawn between said designated points.
Elevations are in feet above U.S.G.S. datum or mean sea level.
This drawing and the data hereon are hereby made a part of the specifications.
Work shall be constructed according to specifications on file in the office of the County Engineer and shall be prosecuted only in the presence of the County Engineer.
Before work can be started, the contractor must obtain a permit to excavate in County streets from the L.A. County Road Dept., 108 W. 2nd St. and make a deposit with the County Engineer, 733 L.A. County Engineering Building, sufficient to cover the cost of construction inspection and record plans.
Approval of this plan by the County of Los Angeles does not constitute a representation as to the accuracy of the location of or the existence or non-existence of any underground utility, pipe, or structure within the limits of this project. This note applies to all sheets.
If work is to be done in a State Highway, a permit must be obtained from the State of California, Division of Highways, 120 South Spring Street.

COUNTY OF LOS ANGELES, CALIFORNIA
Approved, William J. Fox, County Engineer
A. P. Collins Sanitation Engineer
Approved, A. M. Rawm
CHIEF ENGR. CO. SAN. DIST. NO. 15
Northman Office Engineer
Checked by: *R. K. Kuban* 9-7-54
Office of County Engineer, Reg. C. E. No. 7860

TRACT N^o 17967

W.S. 38

P.C. 3154
A. C. 3125

2120

P.C. 3154
J.N. 1001.31
PAGE 3

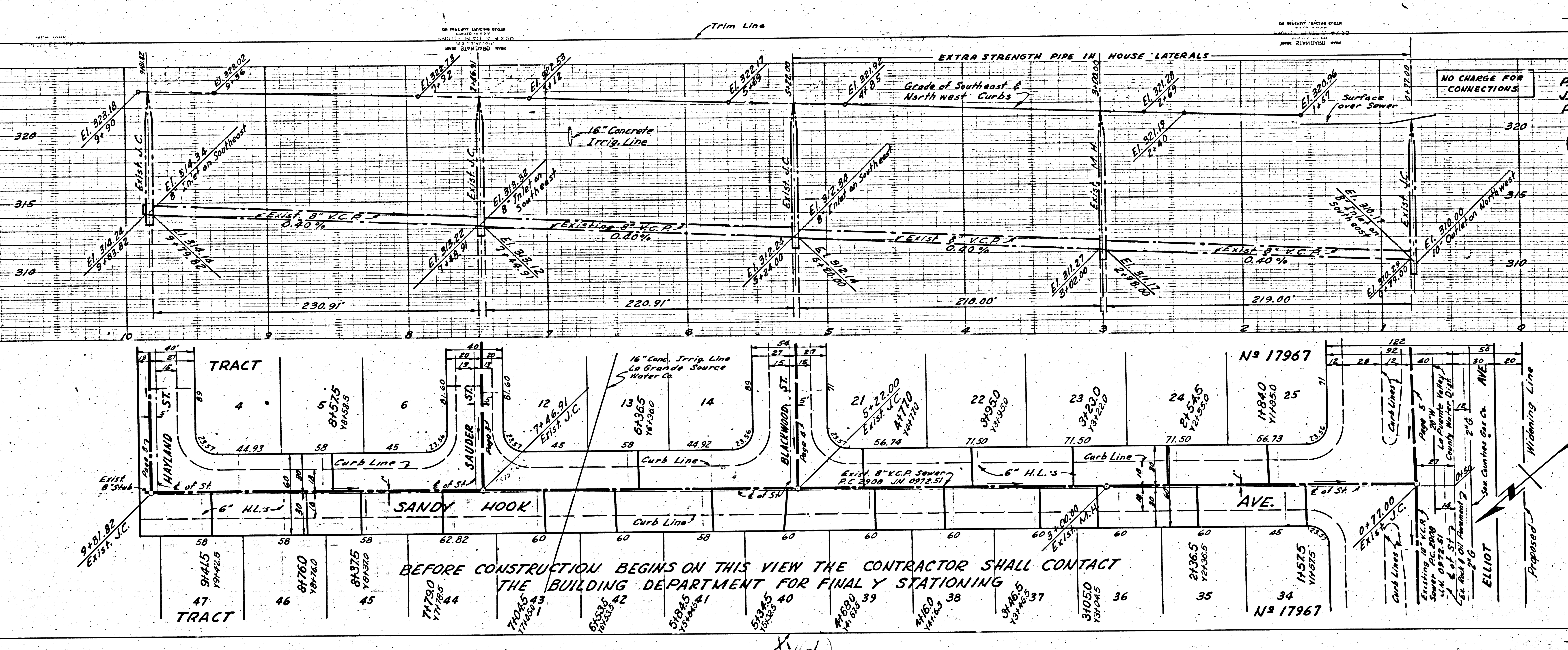
NO CHARGE
FOR
CONNECTIONS

13,018

NO CHARGE FOR
CONNECTIONS

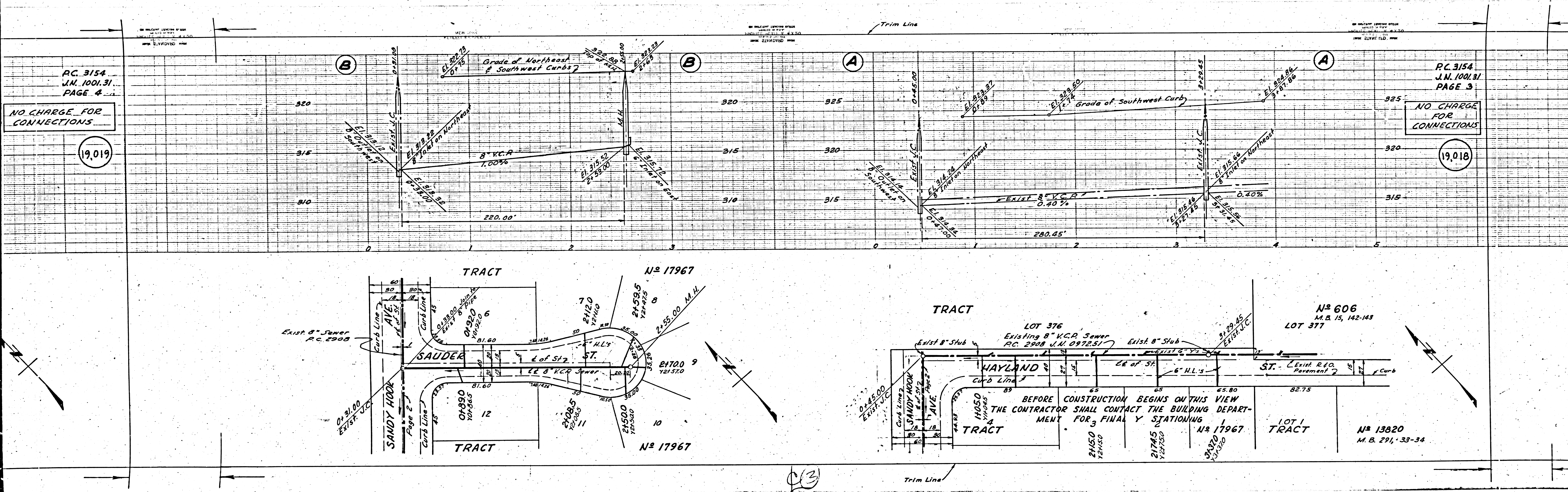
P.C. 3154
J.N. 1001.31
PAGE 2

19,017



BEFORE CONSTRUCTION BEGINS ON THIS VIEW THE CONTRACTOR SHALL CONTACT
THE BUILDING DEPARTMENT FOR FINAL STATIONING

Trim Line



RC. 3154
J.N. 1001.31
PAGE 4

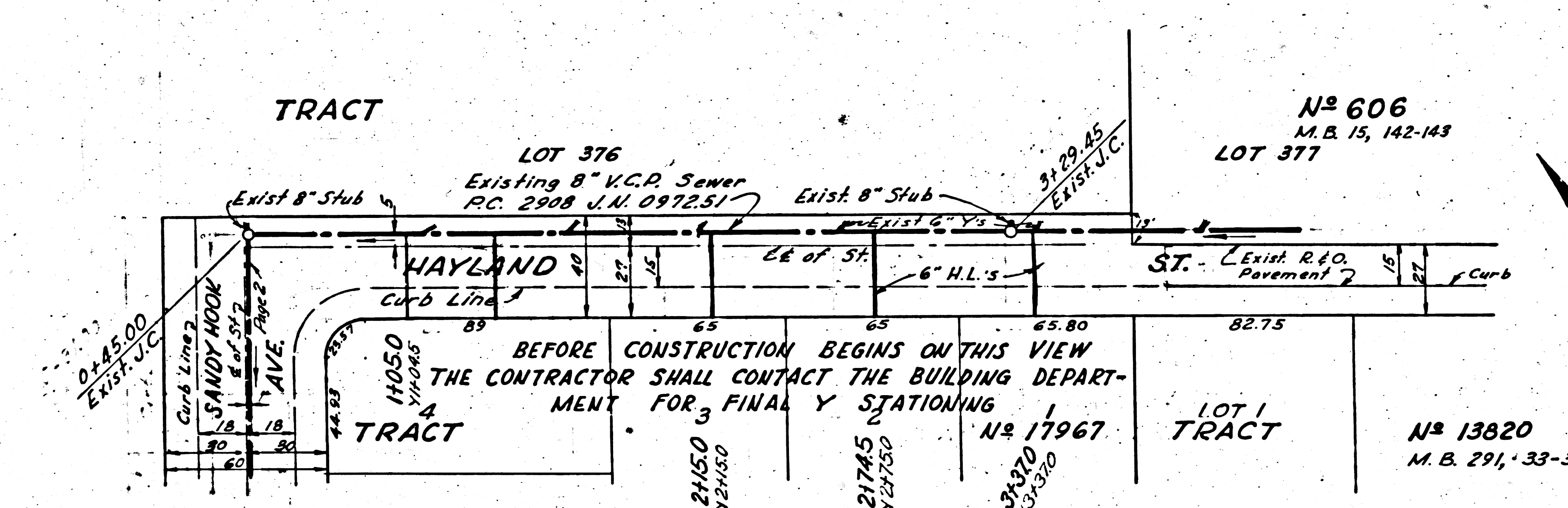
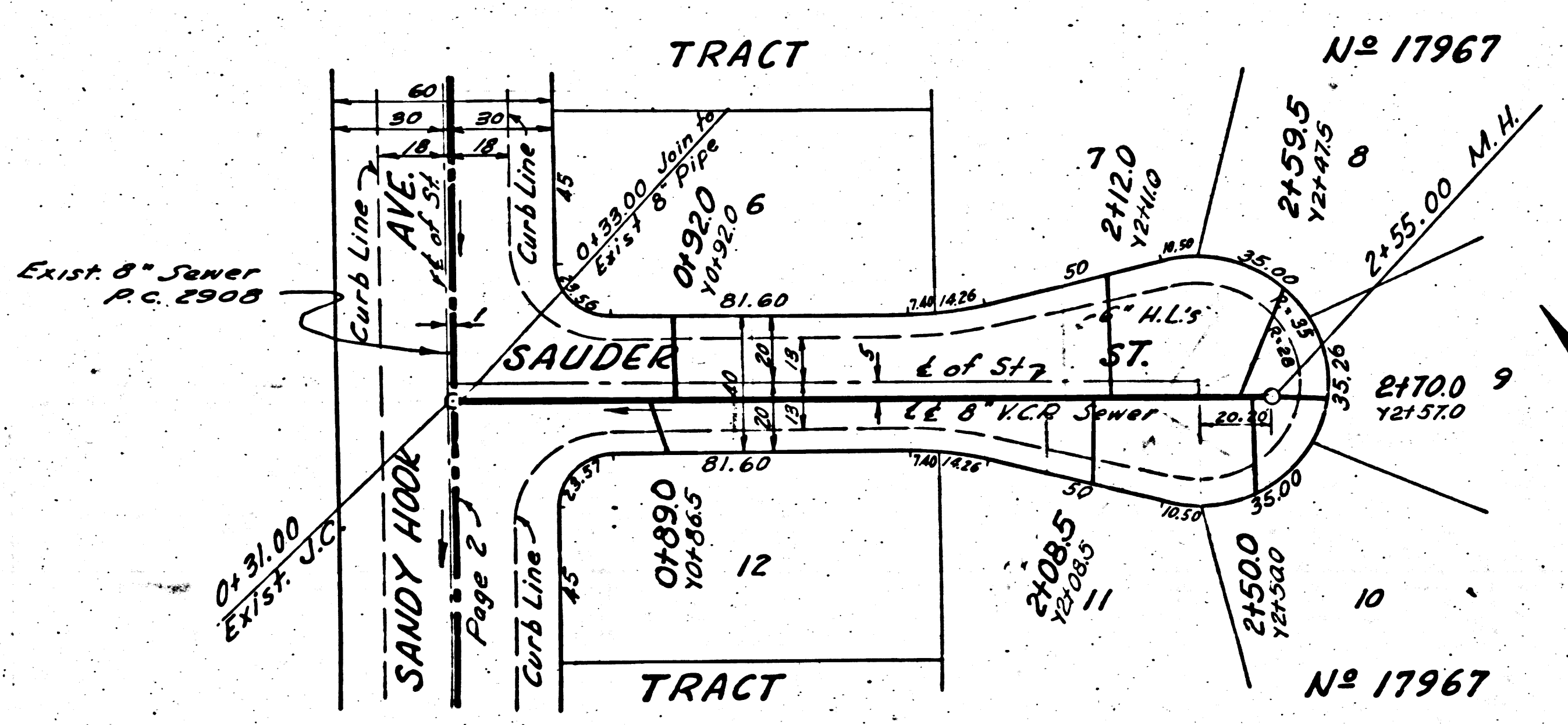
NO CHARGE FOR CONNECTIONS.

19,019

RC. 3154
J.N. 1001.31
PAGE 3

NO CHARGE FOR CONNECTIONS.

19,018



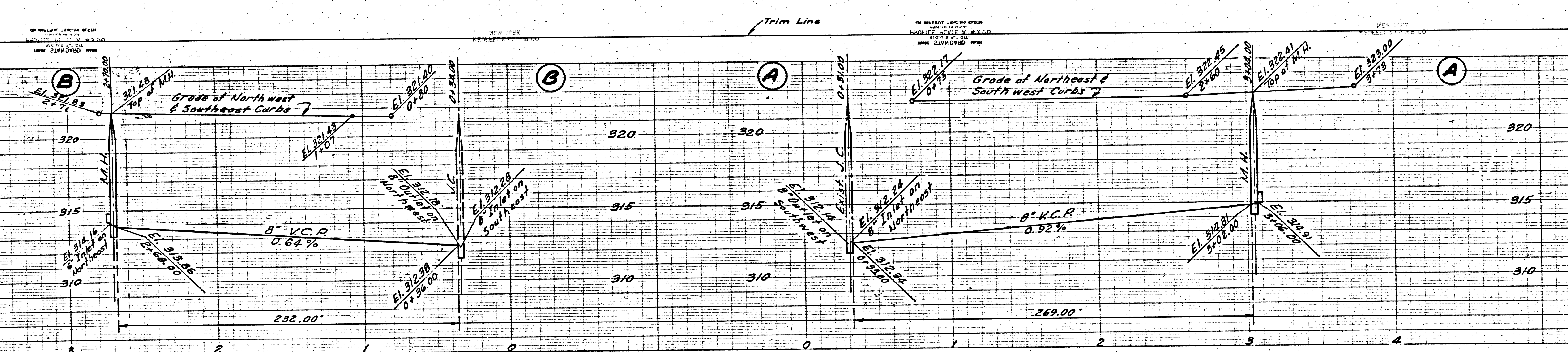
BEFORE CONSTRUCTION BEGINS ON THIS VIEW
THE CONTRACTOR SHALL CONTACT THE BUILDING DEPARTMENT
FOR FINAL STATIONING

19,018

PC. 3154
J.M. 1001.31
PAGE 5

NO CHARGE FOR CONNECTIONS

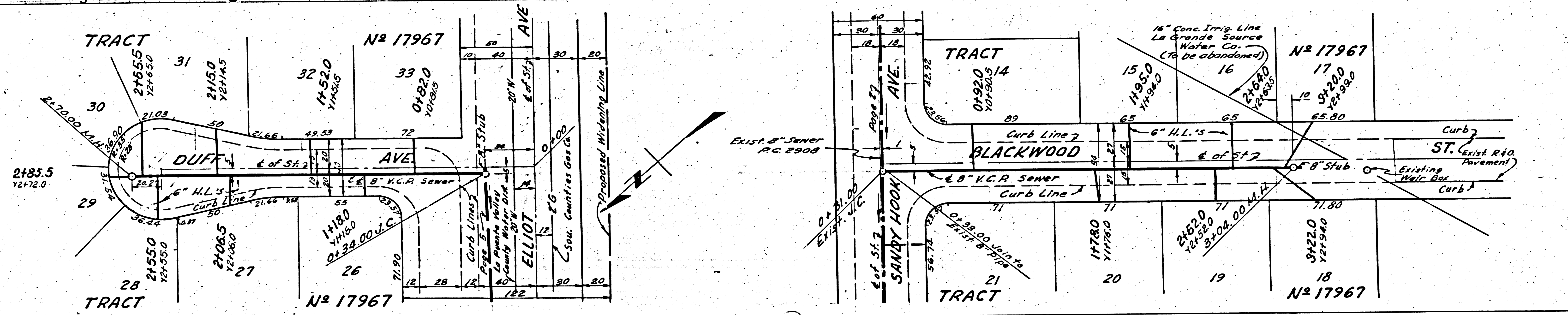
19,020



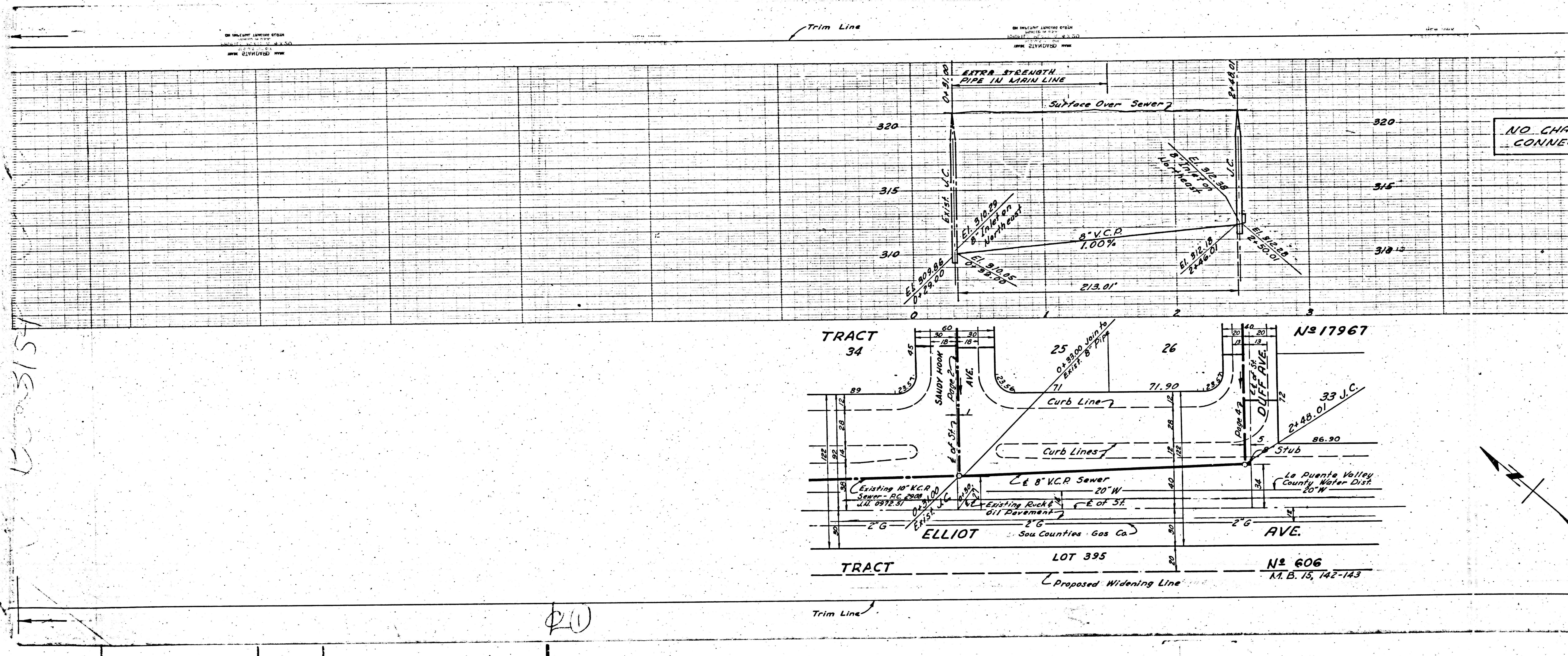
PC. 3154
J.M. 1001.31
PAGE 4

NO CHARGE FOR CONNECTIONS

19,019

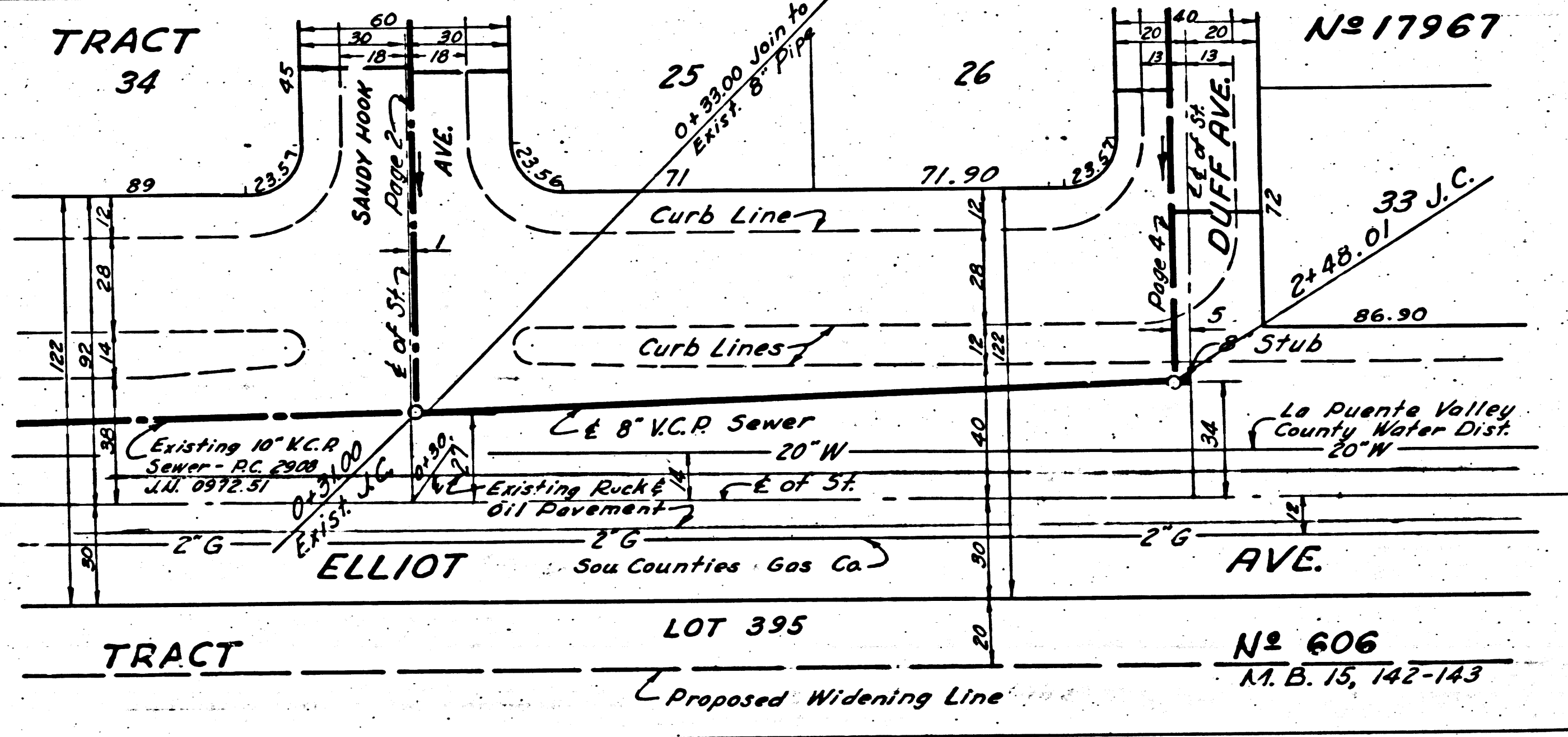


Trim Line



1518315

NO. CHA
CONNE



20

Trim Line

La Puente Valley
County Water Dist.
20" W

ELLIOT
Sou Counties Gas Co

2" G

Existing Rock
Oil Pavement

Existing 18" V.C.R.
Sewer - RC 20" W
JUL 2878.31

SAUNDY HOOK
Ave. 2"

0.9500 (top to
Exist. 8" Pipe)

71.90

71.90

25

26

TRACT 34

TRACT

LOT 395

Proposed Widening Line

N^o 606

A.B. 15, 142-143

N^o 17967

DUFF AVE.

33 J.C.

86.90

24.48.01

Stub

2" G

2" G

2" G

2" G

2" G

2" G

2" G

2" G

2" G

2" G

2" G

2" G

2" G

2" G

2" G

2" G

2" G

2" G

2" G

2" G