

Trim Line

SHT 1 of 2

PALMDALE Bldg. Dist. No. 8P

PROFILE, ALIGNMENT AND GRADE OF
SANITARY SEWERS
TO BE CONSTRUCTED IN

P. C. 3158
J. N. 1001.71
PAGE 1

TRACT No 18458

19,402

PRIVATE CONTRACT NO. 3158
W. S. 65

2 SHEETS

Scale: VERT. 1"=4'
HORIZ. 1"=40' SEPT. 1954

PREPARED IN THE OFFICES OF
KARL TUTTLE ENGINEERING CO.

By Harold Johnson 10.11.54
Reg. C. E. No. 7668
FOR LEGEND SEE PLAN NO. S-a-64

(6)

NOTE:

- Provide stakes on the property lines or property lines produced at right angles to the sewer line at the center line of each manhole.
- No representative of the County Engineer will survey or layout any portion of the work. The owner or his authorized representative shall furnish the County Engineer with grade sheets and stations for all house laterals and Y branches and shall provide stakes for them at their proper locations with stationing plainly marked. Any change in location shall be requested in writing by the owner or his representative.
- No revisions shall be made in these plans without the approval of the County Engineer.
- 1. Use standard manhole frames and covers, S-a-117.
- 2. Use standard strength pipe except as noted.
- 3. Use cement mortar for all vitrified clay pipe joints.
- 4. Resurface all trench within paved area to meet L.A. County Road Dept. or Calif. State Highway Dept. requirements in accordance with permit.
- 5. Encase four feet of sewer at points of interference with poles, S-a-119.
- 6. House laterals to be constructed with inverts at property line.....6.....feet below curb . . . grade except as noted.
- 7. All structures shall be brick sewer structures, S-a-104.
- 8. For allowable leakage test, use Formula No.....1....., Spec's., Sec. 51.
- 9. Manhole tops in unimproved Rights-of-Way to be 6" above finish grade.
- 10. **BALL ALL PIPE JOINTS WITH 4" CEMENT MORTAR THAT ARE WITHIN 20 FEET OF ALL PROPERTY LINES OR IN SANITARY SEWER R/W'S.**

NOTE:

Grades to which this improvement is to be constructed are shown on plans and profiles. Grade points for top of curbs, center line of streets, or center line of alleys are shown by circles on profiles. At all points between designated points the grade shall be established so as to conform to a straight line drawn between said designated points.

Elevations are in feet above U.S.G.S. datum or mean sea level.

This drawing and the data hereon are hereby made a part of the specifications.

Work shall be constructed according to specifications on file in the office of the County Engineer and shall be prosecuted only in the presence of the County Engineer.

Before work can be started, the contractor must obtain a permit to excavate in County streets from the L.A. County Road Dept., 108 W. 2nd St., and make a deposit with the County Engineer, 733 L.A. County Engineering Building, sufficient to cover the cost of construction inspection and record plans.

Approval of this plan by the County of Los Angeles does not constitute a representation as to the accuracy of the location of or the existence or non-existence of any underground utility, pipe, or structure within the limits of this project. This note applies to all sheets.

If work is to be done in a State Highway, a permit must be obtained from the State of California, Division of Highways, 120 South Spring Street.

COUNTY OF LOS ANGELES, CALIFORNIA

Approved, William J. Fox, County Engineer

Approved, A. M. Rawns

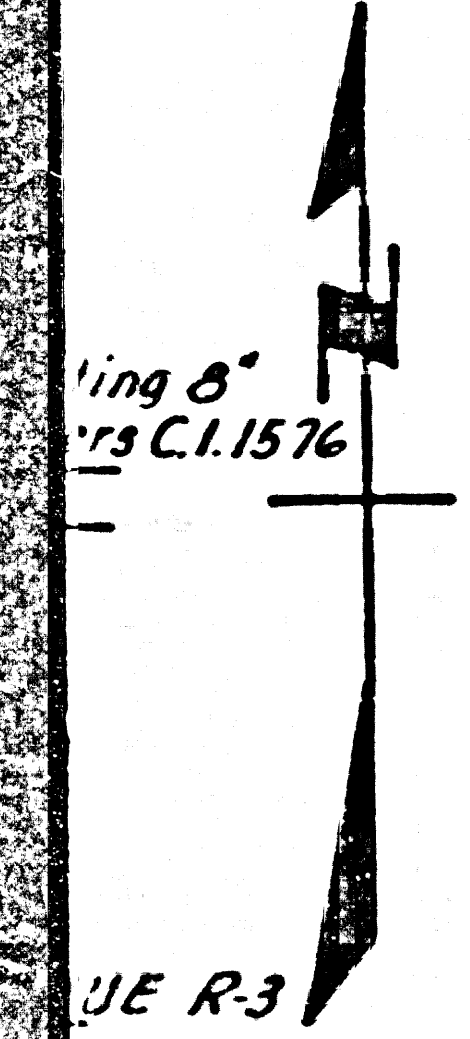
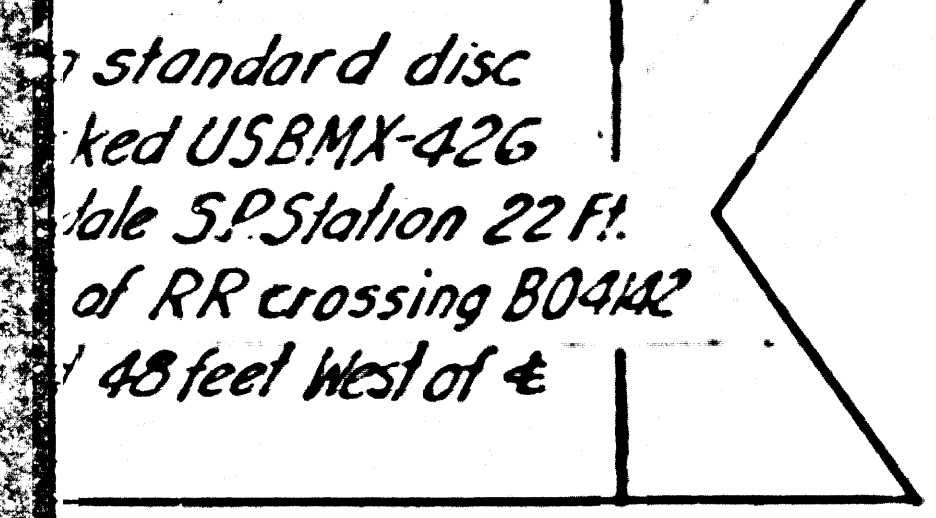
By A. P. Collins
Sanitation Engineer

By D. Posthumus
Office Engineer

Checked By: R. K. Kuhn 10-15-54
Office of County Engineer, Reg. C. E. No. 7360

R.S.

Trim Line



SHEET No	PAGES
1	1-3
2	4-6

**COLLECT CHARGES
AS INDICATED**

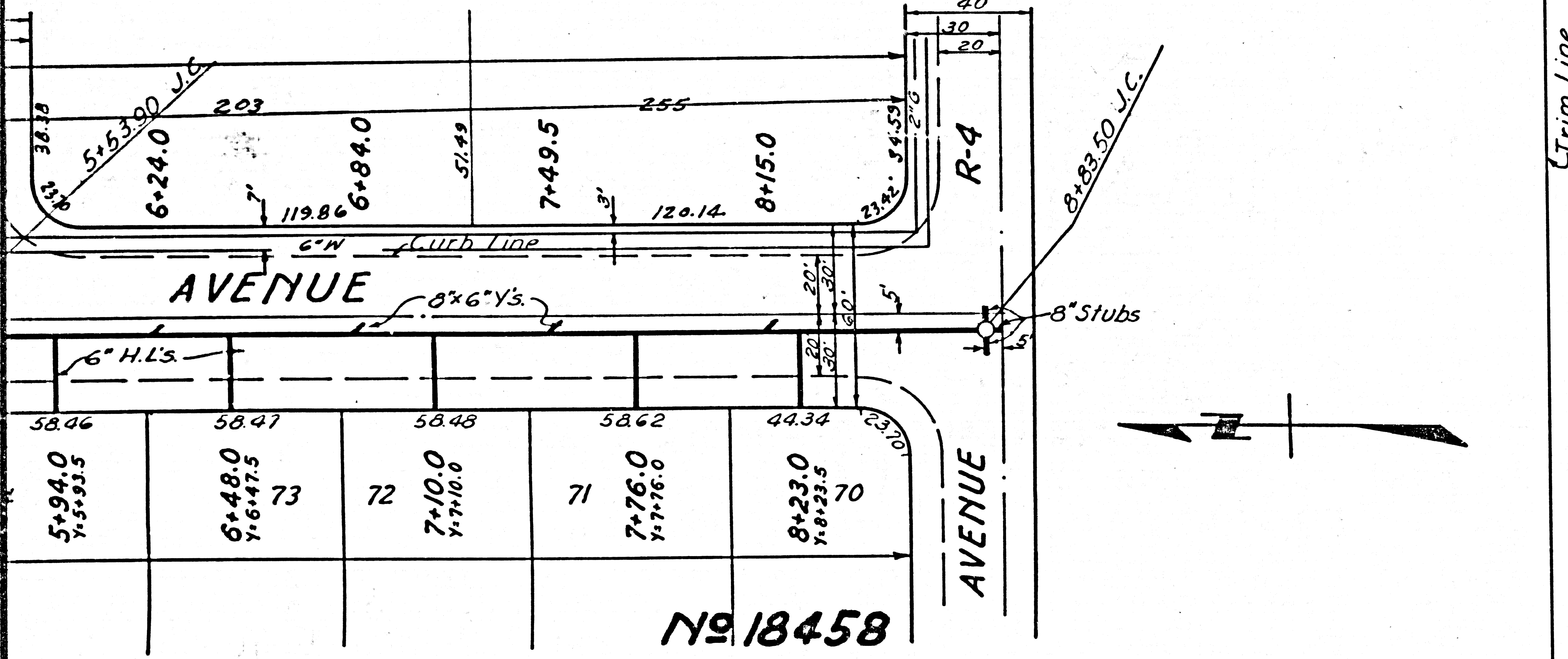
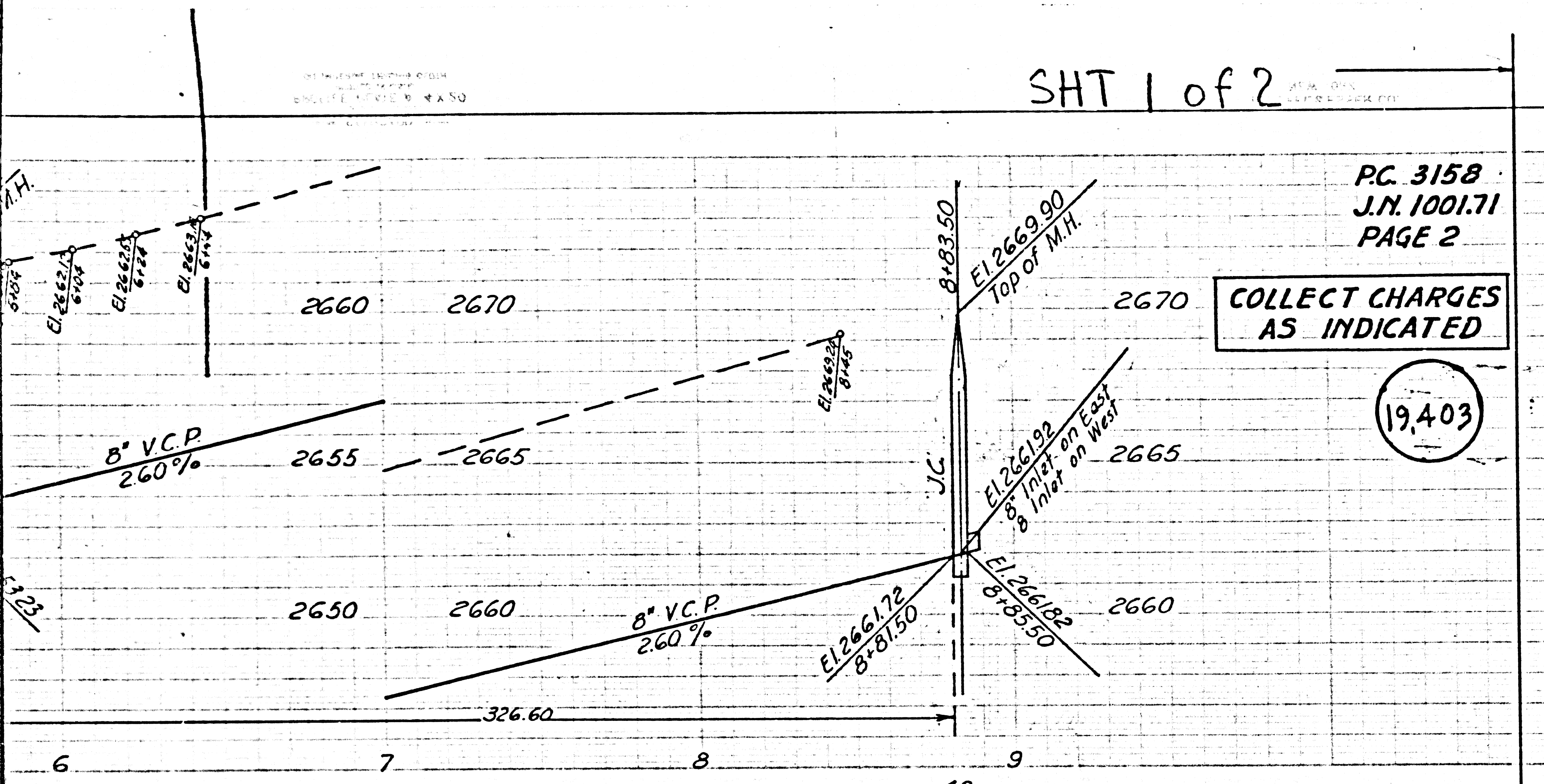
R. K. Kuhn 10-15-54

SHT 1 of 2

PC 3158
J.N. 1001.71
PAGE 2

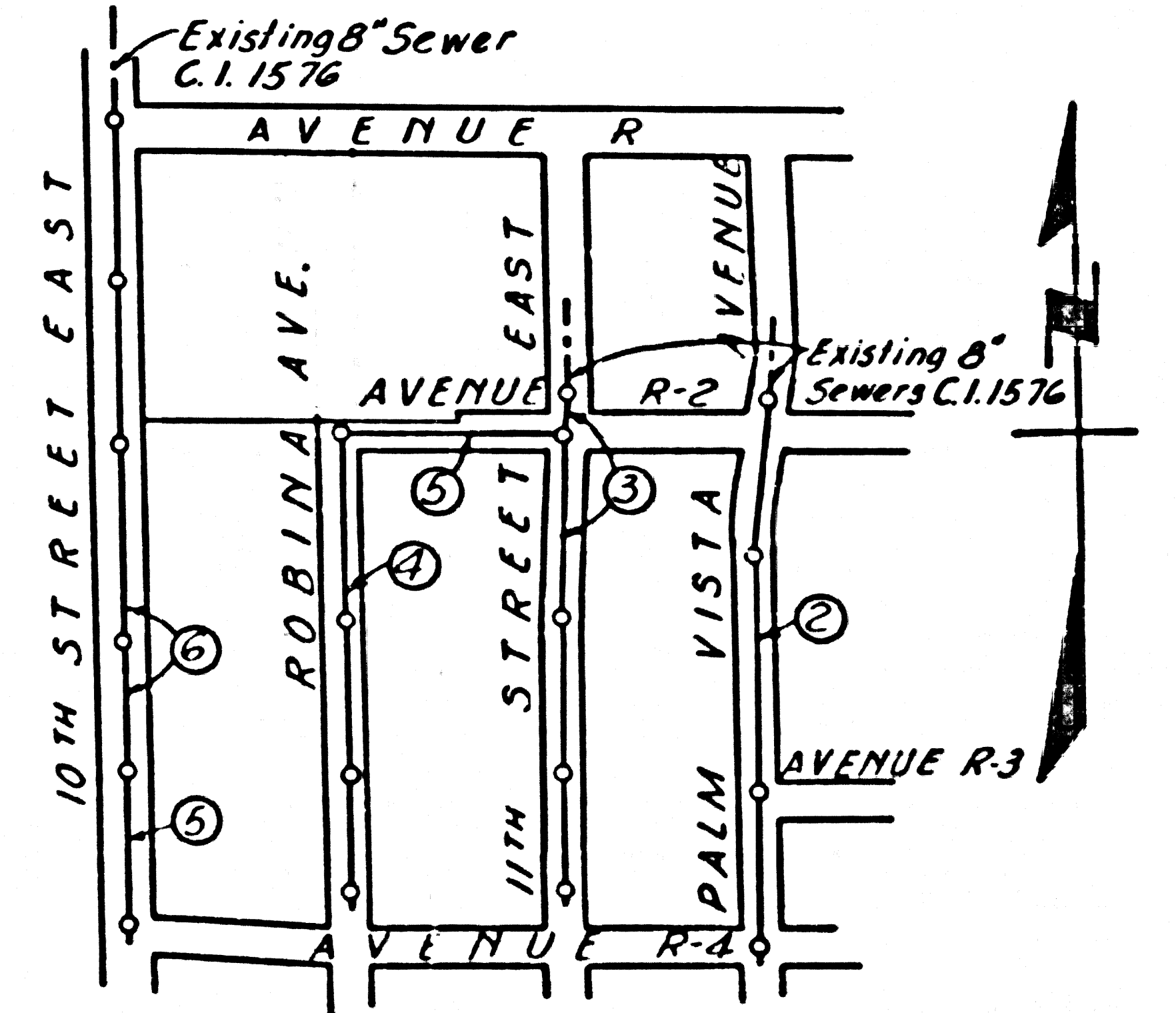
COLLECT CHARGES
AS INDICATED

19,403



N^o 18458

BENCH MARK
US N^o 3203 Elevation 267156 a standard disc set in top of a concrete post marked USBMX-426 approximately 0.5 miles South of Palmdale SPS Station 22 Ft. East of S.P. Signal N^o 4143, 56 yards So. of RR crossing B04M2 34 feet East of ϵ S.P. main tracks and 48 feet West of ϵ U.S. Highway N^o 6



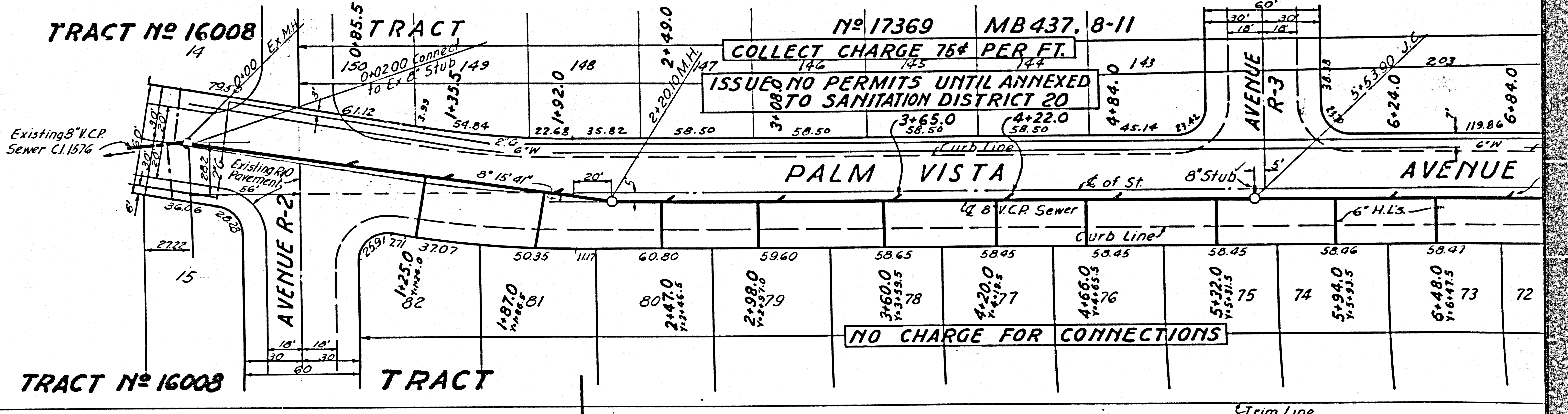
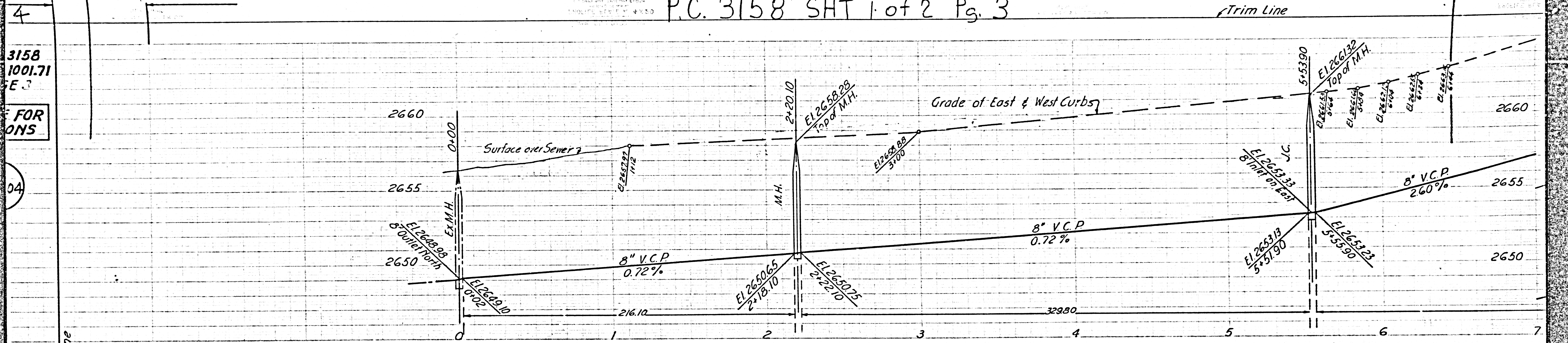
INDEX MAP
SCALE 1"=400'
TRACT N^o 18458
PC 3158 J.N. 1001.71

SHEET	1
	2

COLLECT AS INDICATED
Refer

checked 12-13-54 *McLaren*

FOR
ONS

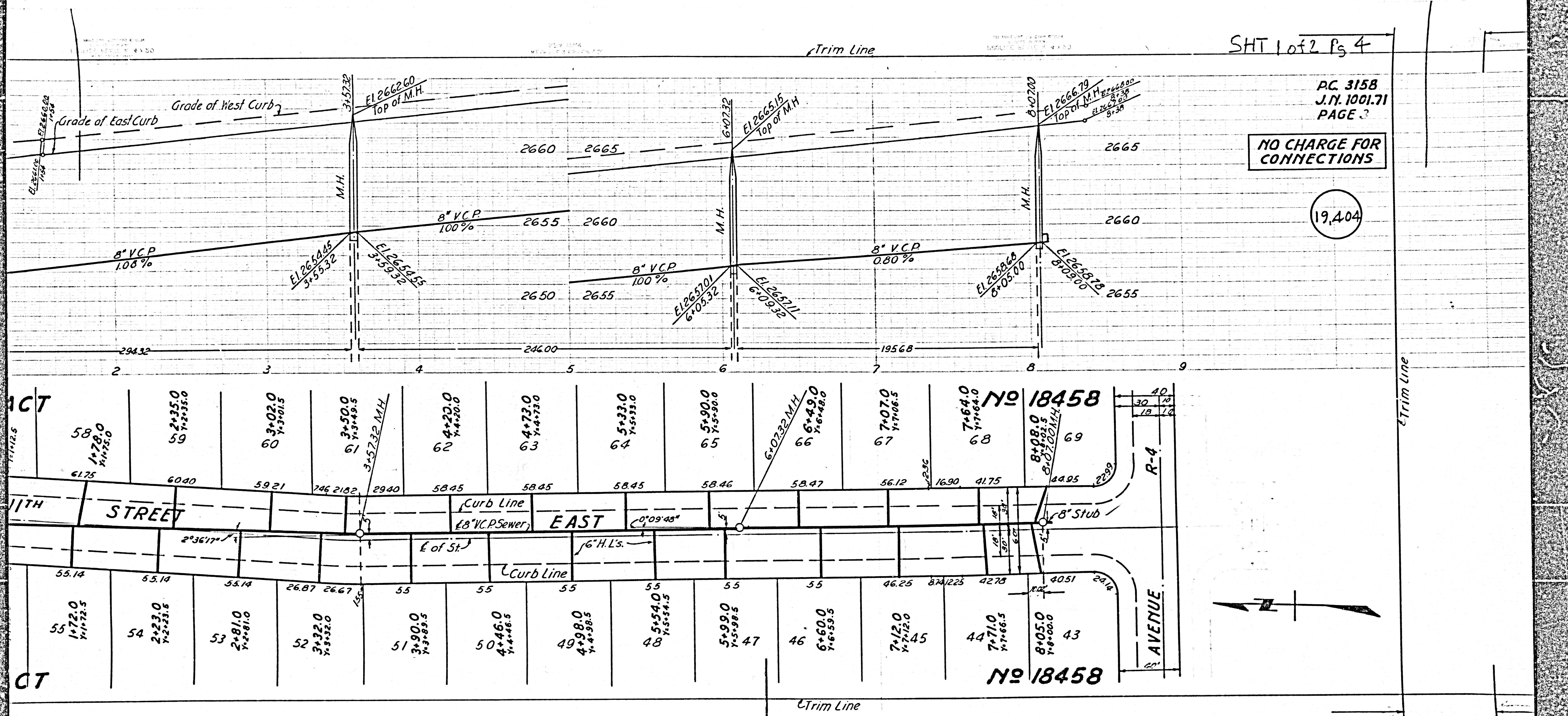


Trim Line

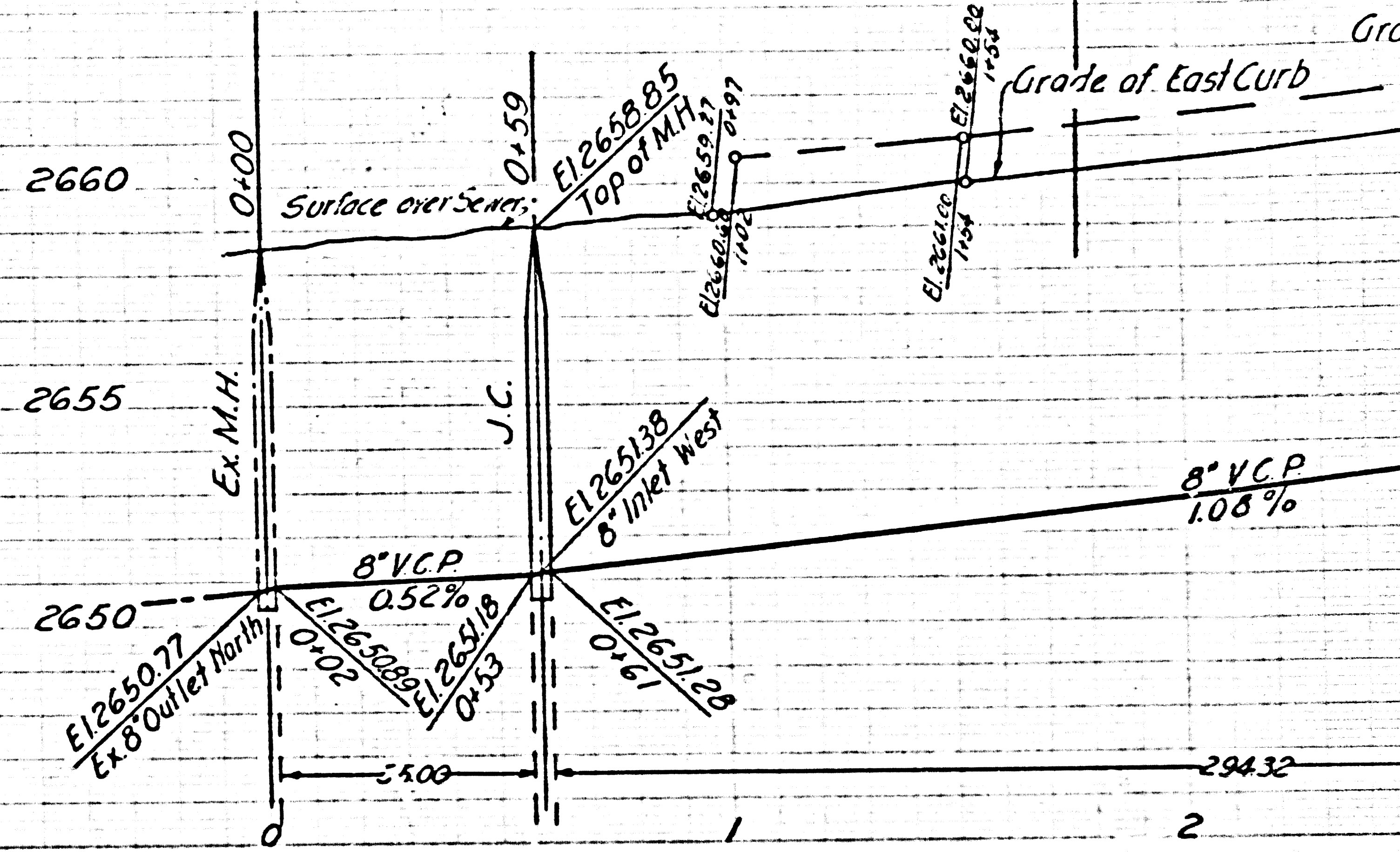
Trim Line

NO CHARGE FOR CONNECTIONS

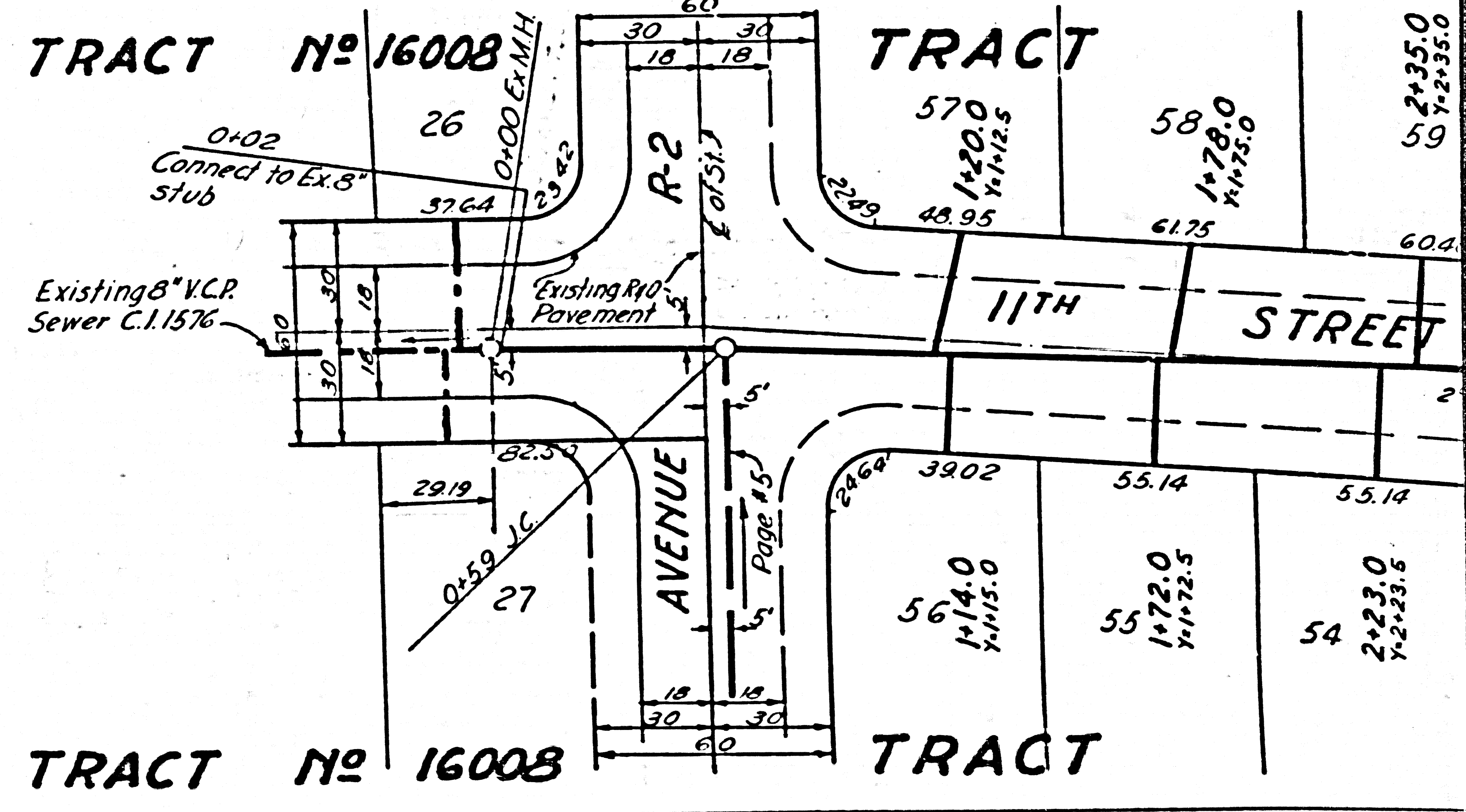
19,404



P.C. 3158 SHT 1 of 2 Pg 5



① TRACT NO 16008 8213 29 8213 19M TRACT



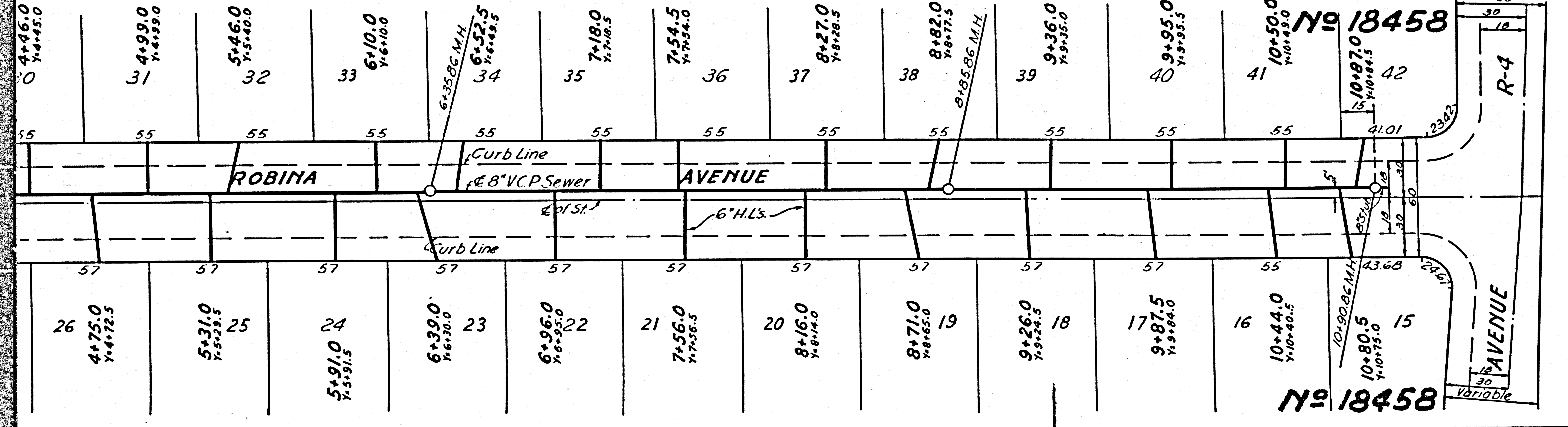
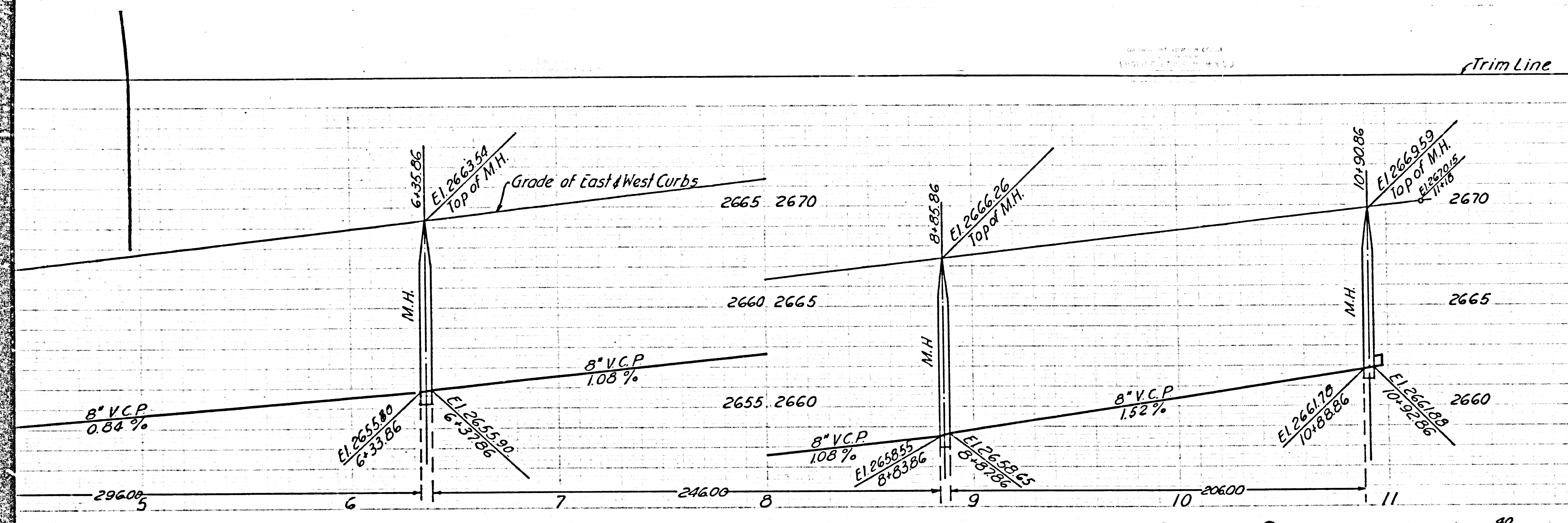
Trim Line

SHT. 2 of 2 Pg. 5

PC. 3158
J.M. 1001.71
PAGE

NO CHARGE
FOR CONNECTIONS

19,405



No 18458

Variable

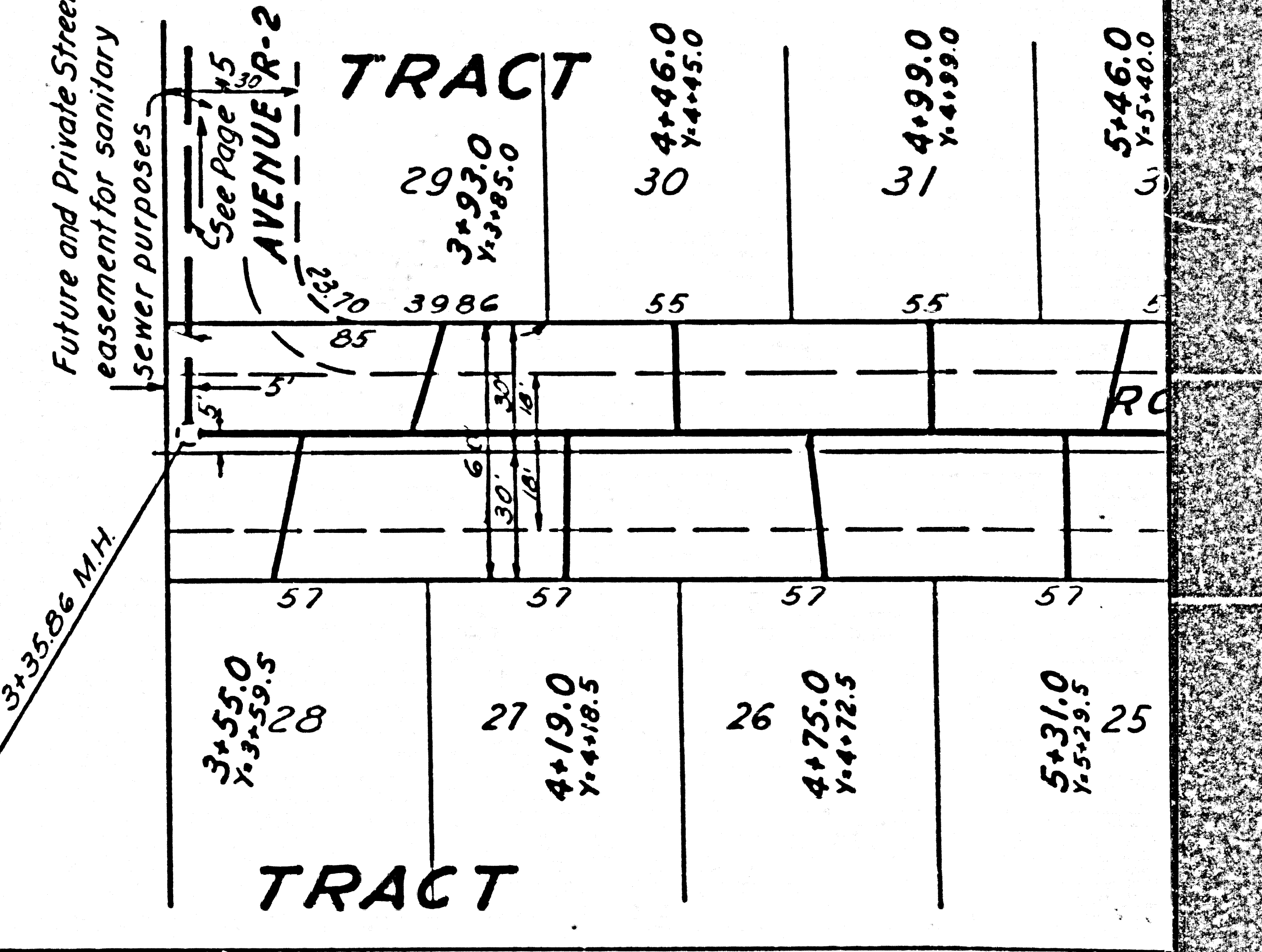
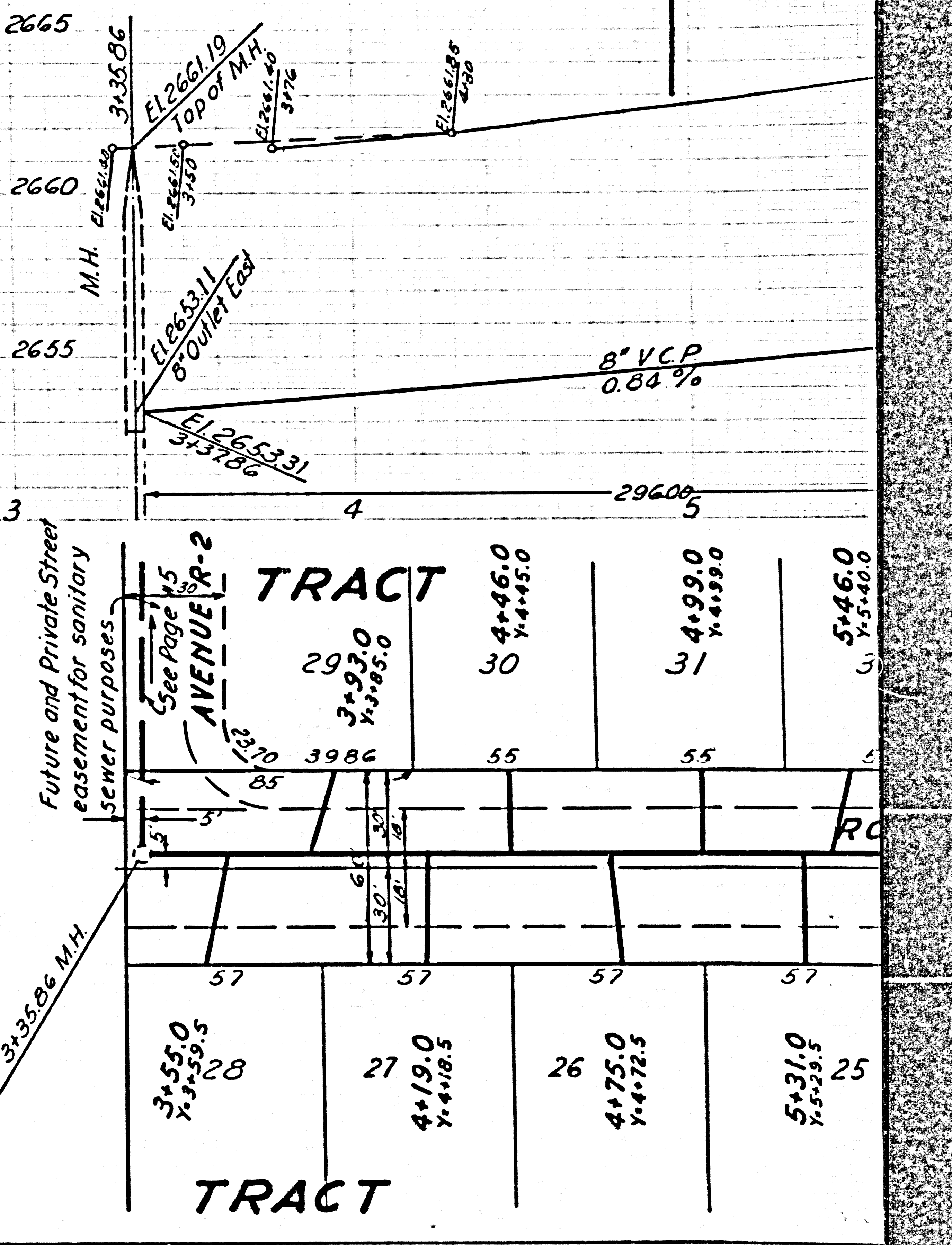
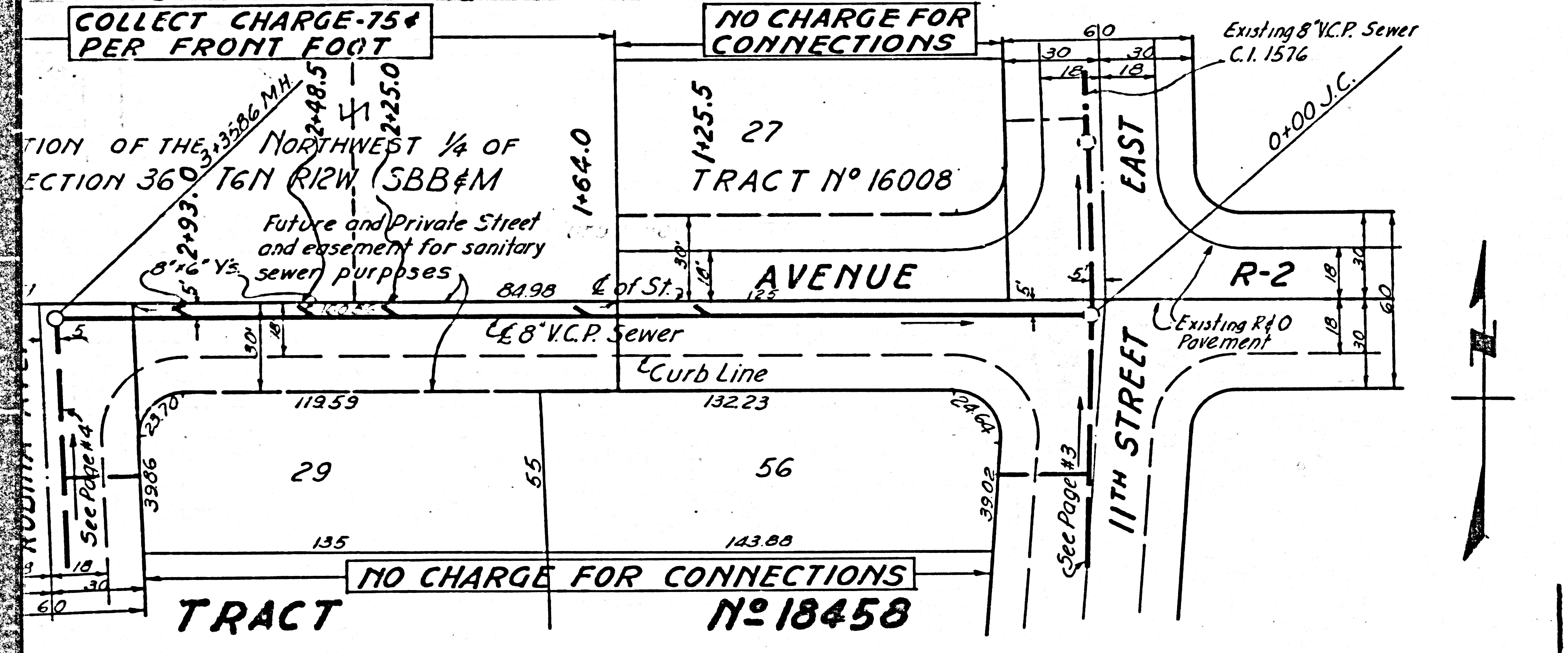
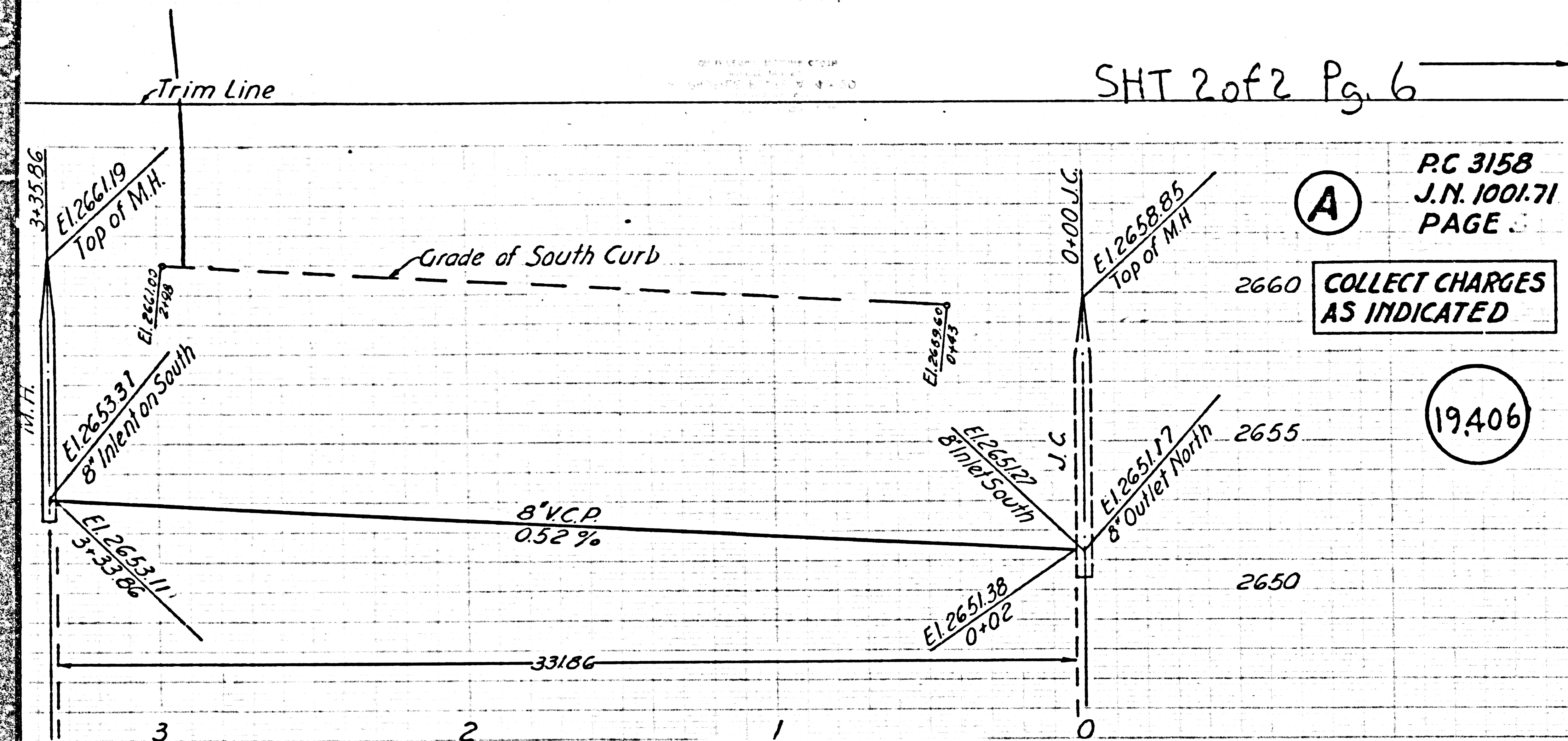
R.L.

Trim Line

PC 3158
J.N. 1001.71
PAGE

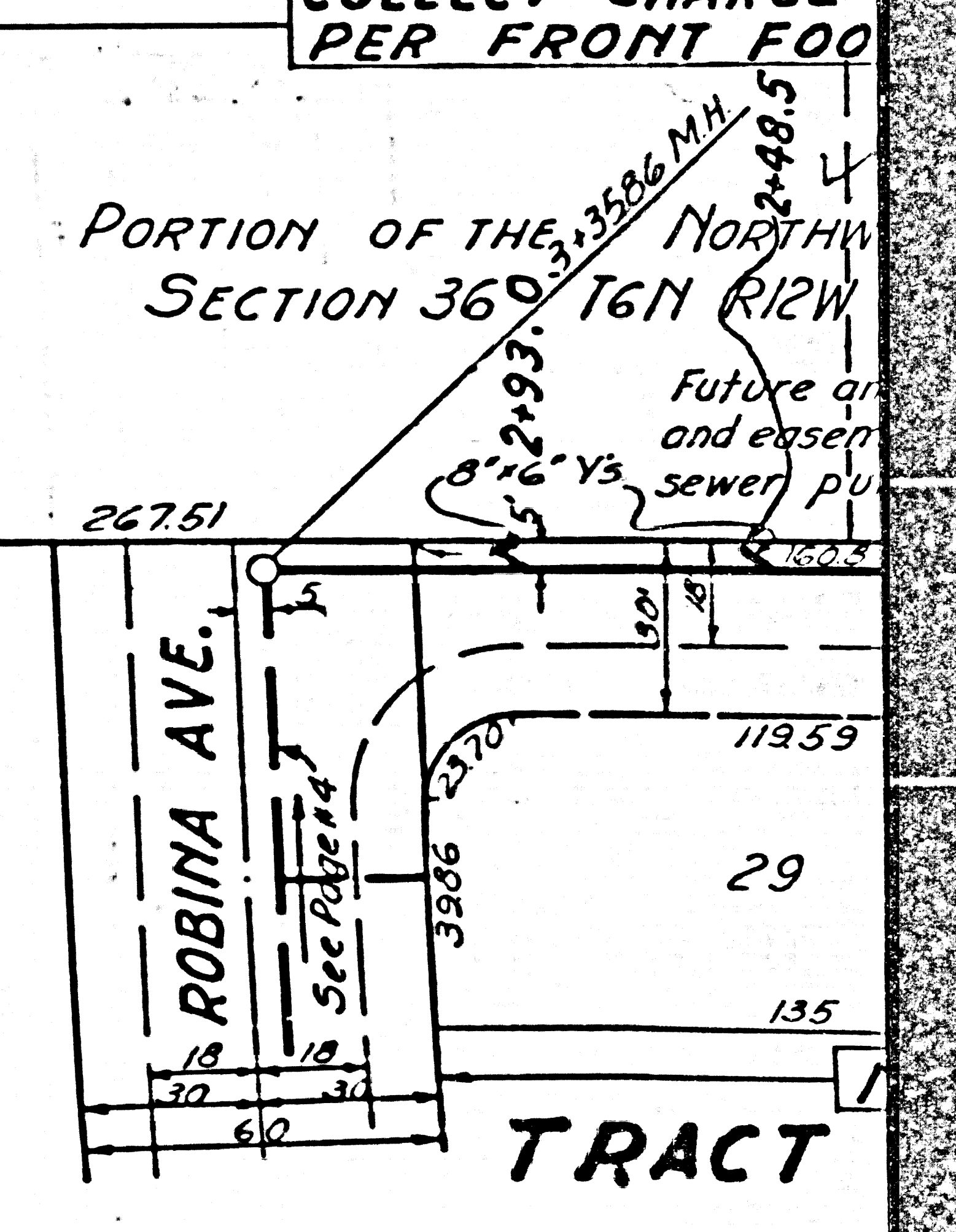
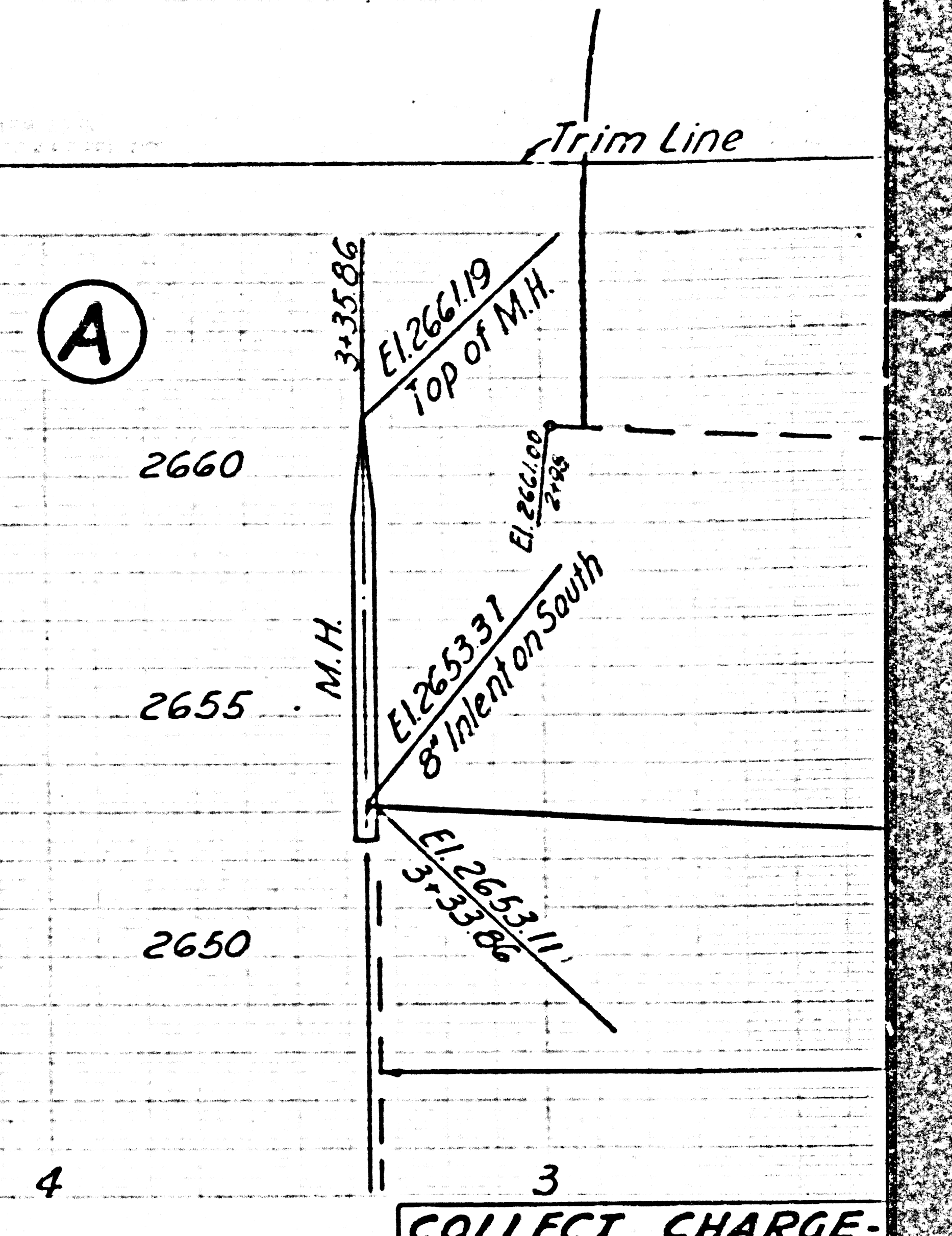
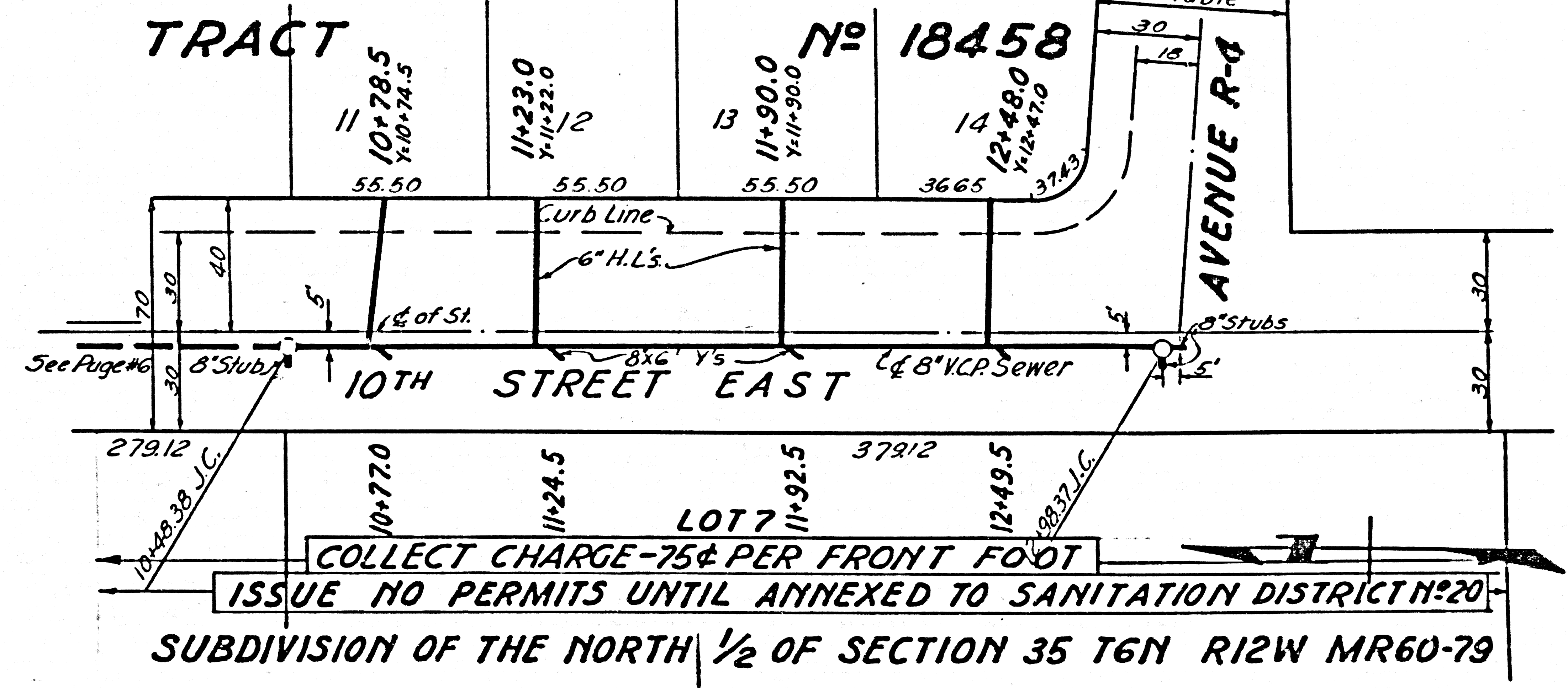
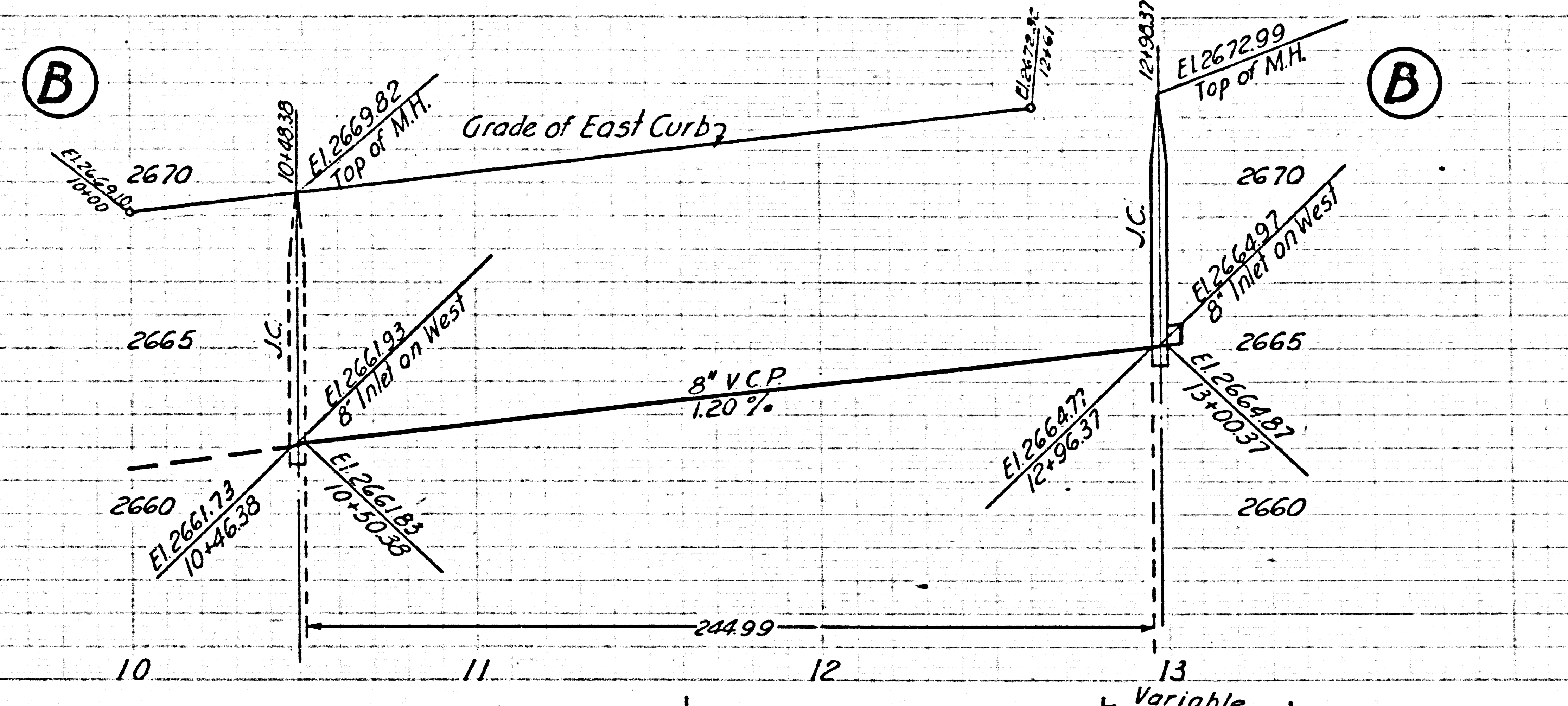
A
COLLECT CHARGES
AS INDICATED

19406



P.C. 3158
J.N. 1001.71
PAGE 6
COLLECT CHARGES
AS INDICATED
19,407

458
11
15.50
30
40
30
379.12
See Page #5



Trim Line

Trim Line

COLLECT CHARGE-PER FRONT FOOT

PORTION OF THE NORTH 1/2 SECTION 36 T6N R12W

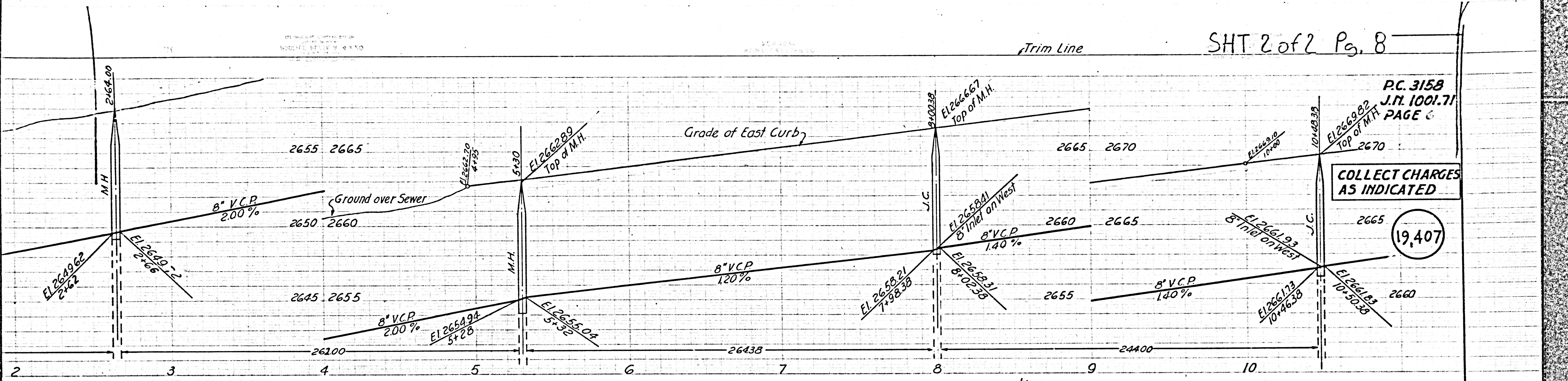
COLLECT CHARGE-75¢ PER FRONT FOOT

ISSUE NO PERMITS UNTIL ANNEXED TO SANITATION DISTRICT NO 20

SUBDIVISION OF THE NORTH 1/2 OF SECTION 35 T6N R12W MR60-79

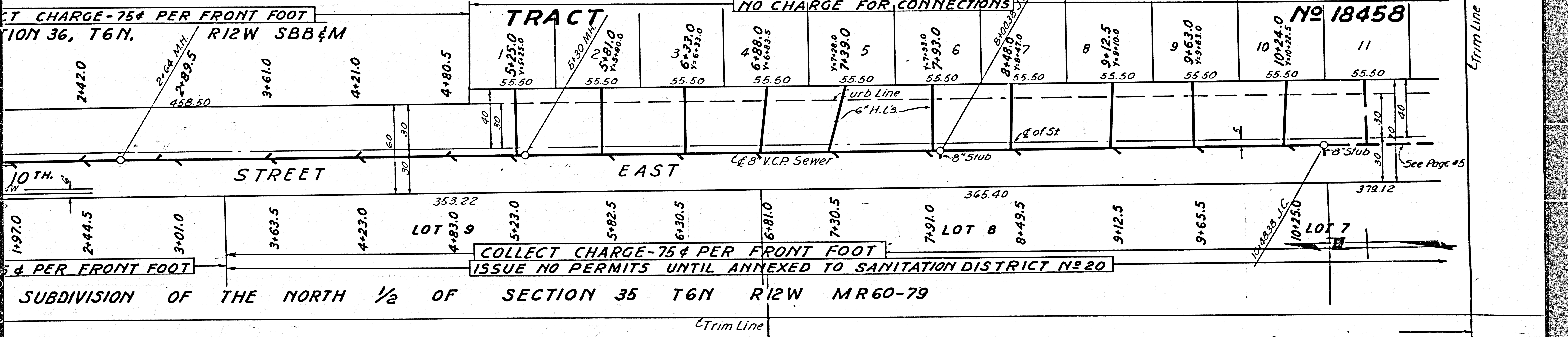
TRACT

PC. 3158
J.N. 1001.71
PAGE 6



COLLECT CHARGES AS INDICATED

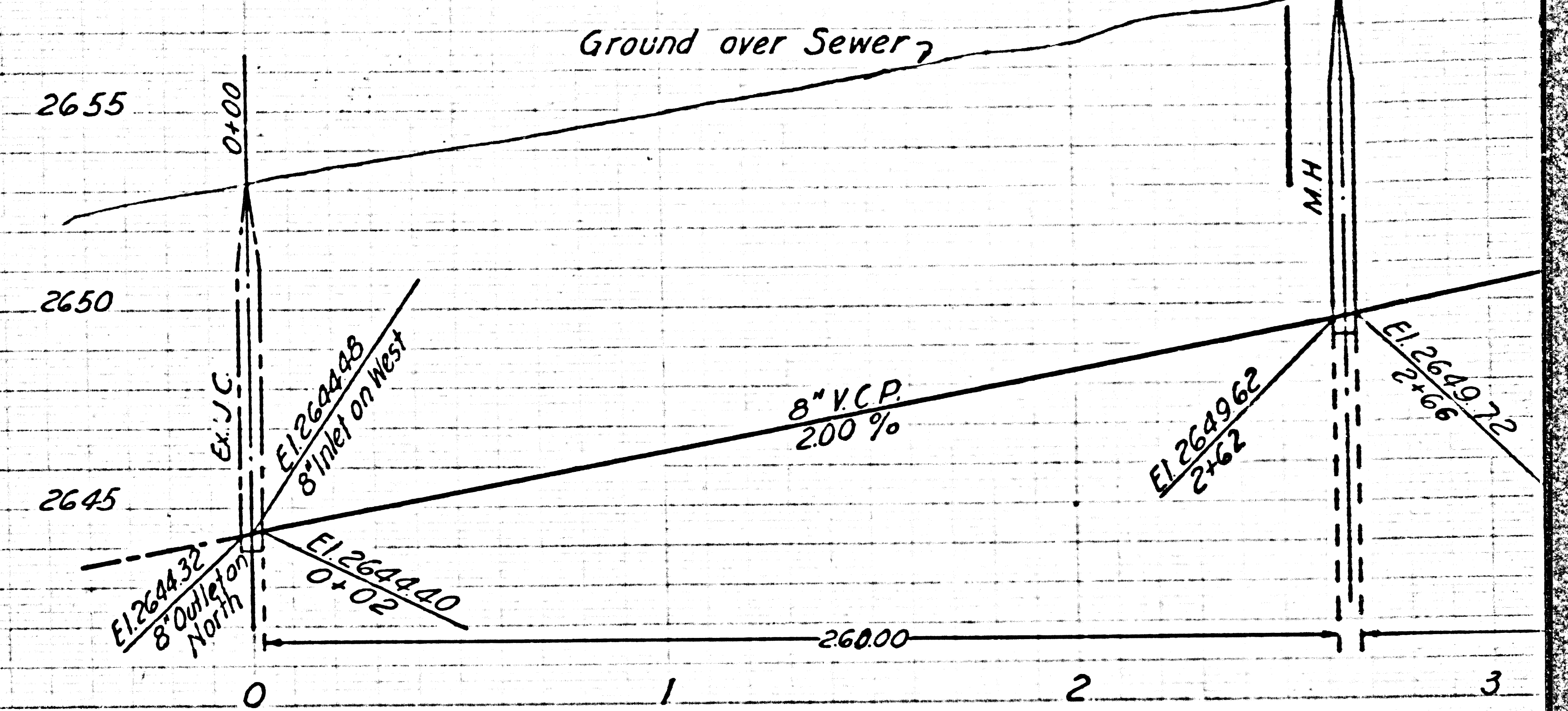
19,407



SUBDIVISION OF THE NORTH 1/2 OF SECTION 35 T6N R12W MR60-79

THE ENGINEER'S OFFICE
 1001 W. 10TH ST. S.W.
 ALBUQUERQUE, N.M.

PC. 3158 2 of 2 Pg 9



SECTION 36, T6N, R10E, S9, 82181911 TOWN

