

B.M. S. G. 1046, Page 450 Spk. & Lead in S.E. Cor. of conc. found at S.P.R.R. X-ing signal ± 35' W. of E. of Hacienda Blvd. prod. No. ± 20' N. of No. rail, mainline Valley Blvd. X-ing in Puente. ELEV. 323.420

SHEET NO.	PAGES
1	1-4
2	5-8
3	9-11

**PUENTE BLDG. DIST. NO 2**

- NOTE:**
- 1. Provide stakes on the property lines or property lines produced at right angles to the sewer line at the center line of each manhole.
  - 2. The owner or his authorized representative shall furnish the County Engineer with grade sheets and stations for all house laterals and Y branches and shall provide stakes for them at their proper locations with stationing plainly marked. A change in location shall be requested in writing by the owner or his representative.
  - 3. No revisions shall be made in these plans without the approval of the County Engineer.
  - 4. Use standard manhole frames and covers, S-a-117.
  - 5. Use standard strength pipe.
  - 6. Use cement mortar for all vitrified clay pipe joints.
  - 7. Resurface all trench within paved area to meet L.A. County Road Dept. or California State Highway Dept. requirements in accordance with permit.
  - 8. Encase four feet of sewer at points of interference with poles, S-a-119.
  - 9. House laterals to be constructed with inverts at property line 6 feet below curb grade except as noted.
  - 10. All structures shall be brick sewer structures, S-a-104.
  - 11. For allowable leakage test, use Formula No. 1, Spec's., Sec. 51.
  - 12. Manhole tops in unimproved Rights-Of-Way to be 6" above finish grade.

PROFILE, ALIGNMENT AND GRADE OF  
**SANITARY SEWERS**  
TO BE CONSTRUCTED IN

**TRACT NO 17218**

PRIVATE CONTRACT NO. 3159  
W. S. 38  
3 SHEETS

Scale: VERT. 1"=4' HORIZ. 1"=40'  
August 1954  
PREPARED IN THE OFFICES OF  
**KEMMERER ENGR. CO. INC.**

*Hans C. Hornum*  
Rep. C. E. No. 8244  
FOR LEGEND SEE PLAN NO. S-a-64

**NOTE:**

Grades to which this improvement is to be constructed are shown on plans and profiles. Grade points for top of curbs, center line of streets, or center line of alleys are shown by circles on profiles. At all points between designated points the grade shall be established so as to conform to a straight line drawn between said designated points.

Elevations are in feet above U.S.C.G.S. datum or mean sea level.

This drawing and the data hereon are hereby made a part of the specifications.

Work shall be constructed according to specifications on file in the office of the County Engineer and shall be prosecuted only in the presence of the County Engineer.

Before work can be started, the contractor must obtain a permit to excavate in County streets from the L.A. County Road Dept., 108 W. 2nd St. and make a deposit with the County Engineer, 733 L.A. County Engineering Building, sufficient to cover the cost of construction inspection and record plans.

Approval of this plan by the County of Los Angeles does not constitute a representation as to the accuracy of the location of or the existence or non-existence of any underground utility, pipe, or structure within the limits of this project. This note applies to all sheets.

If work is to be done in a State Highway, a permit must be obtained from the State of California, Division of Highways, 120 South Spring Street.

**COUNTY OF LOS ANGELES, CALIFORNIA**

Approved, William J. Fox, County Engineer  
Approved, A. M. Rawn  
CHIEF ENGR. CO. SAN DIST. NO. 21

*H. H. Hughes* Sanitation Engineer  
*A. M. Rawn* Office Engineer

Checked By: *R. E. ...* 10-22-54  
Office of County Engineer, Rep. C. E. No. 7860

**NO CHARGE  
FOR CONNECTIONS**  
*R. ... 10-27-54*

**INDEX MAP**  
SCALE: 1"=300'  
TRACT NO 17218  
P.C. 3159 J.N. 1001.81

PAGE 1  
P.C. 3159  
J.N. 10001

(19,443)

(11)

TRACT NO 17218

P.C. 3159

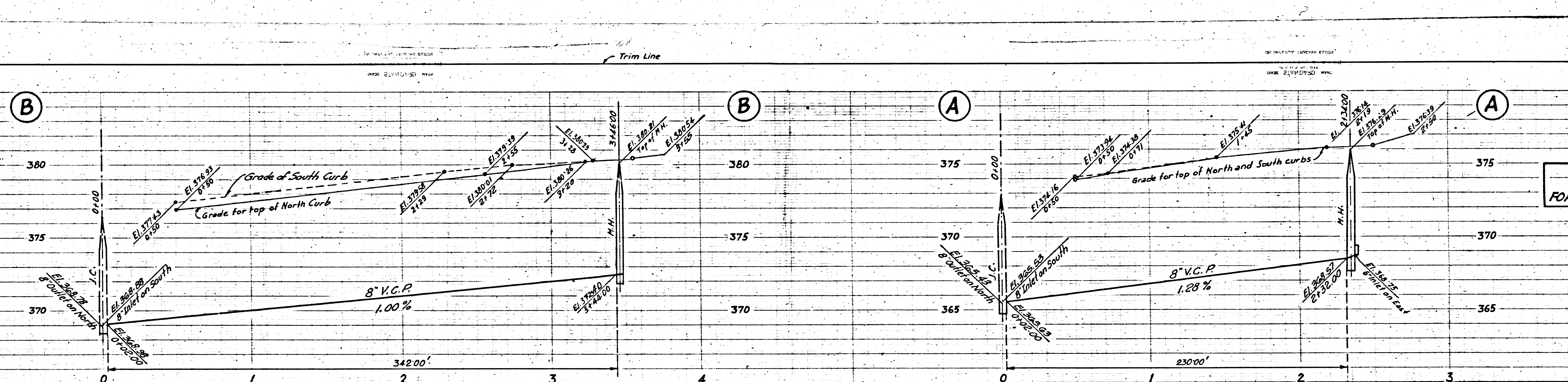
J.N. 10001

1

*Leaded 12-17-54 W. ...*

(14)

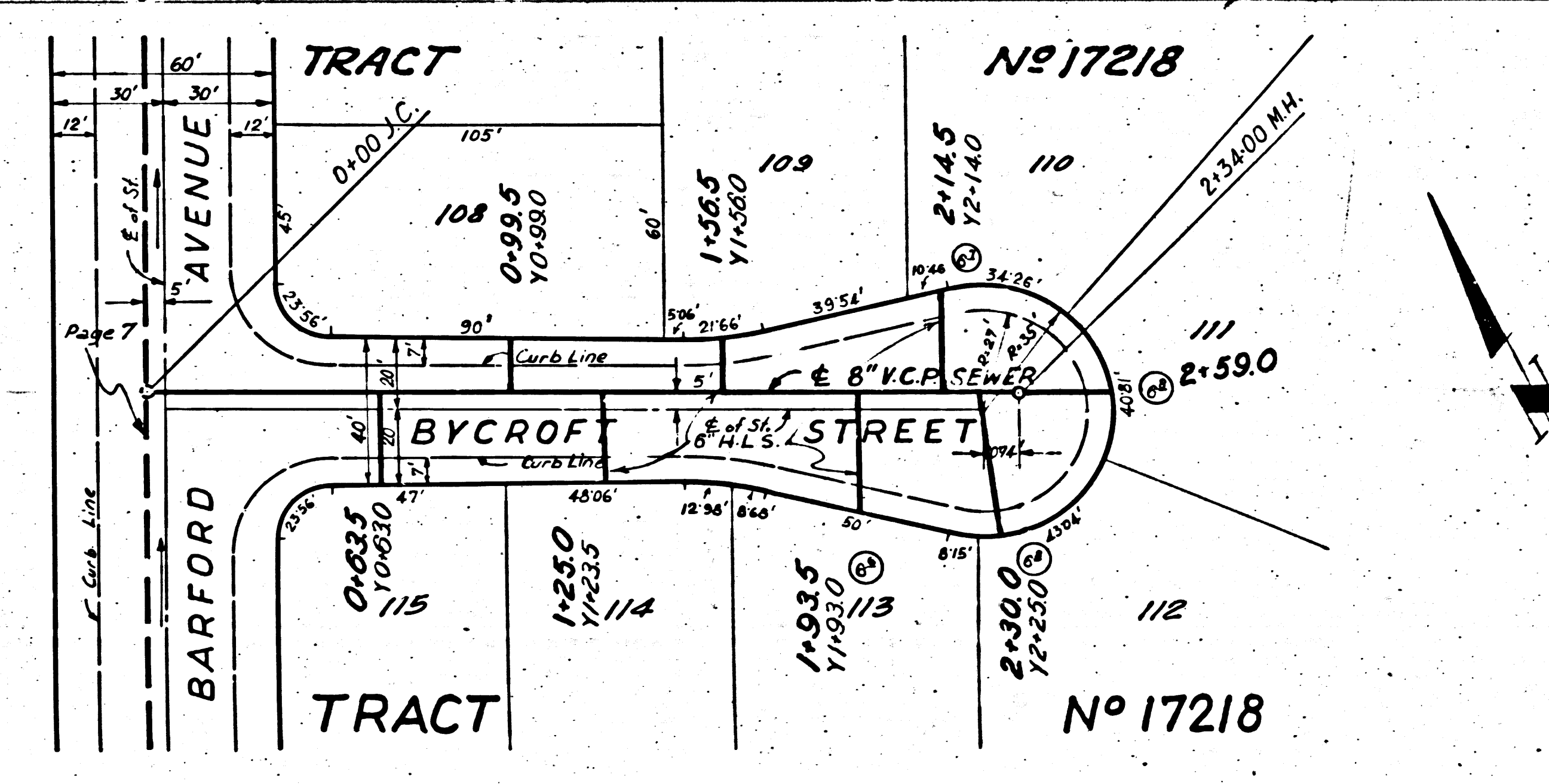
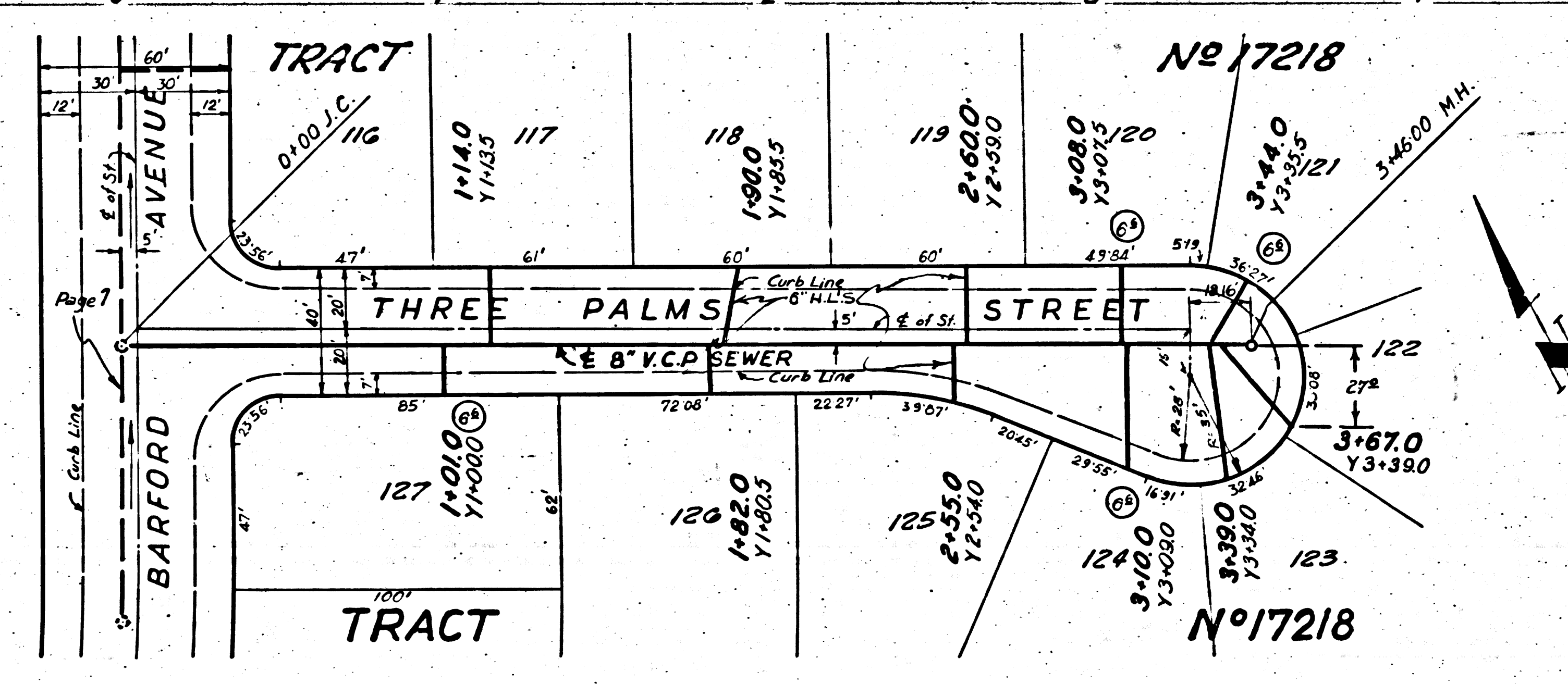
PR



PAGE 2  
 PC. 3159  
 J.N. 1100.01

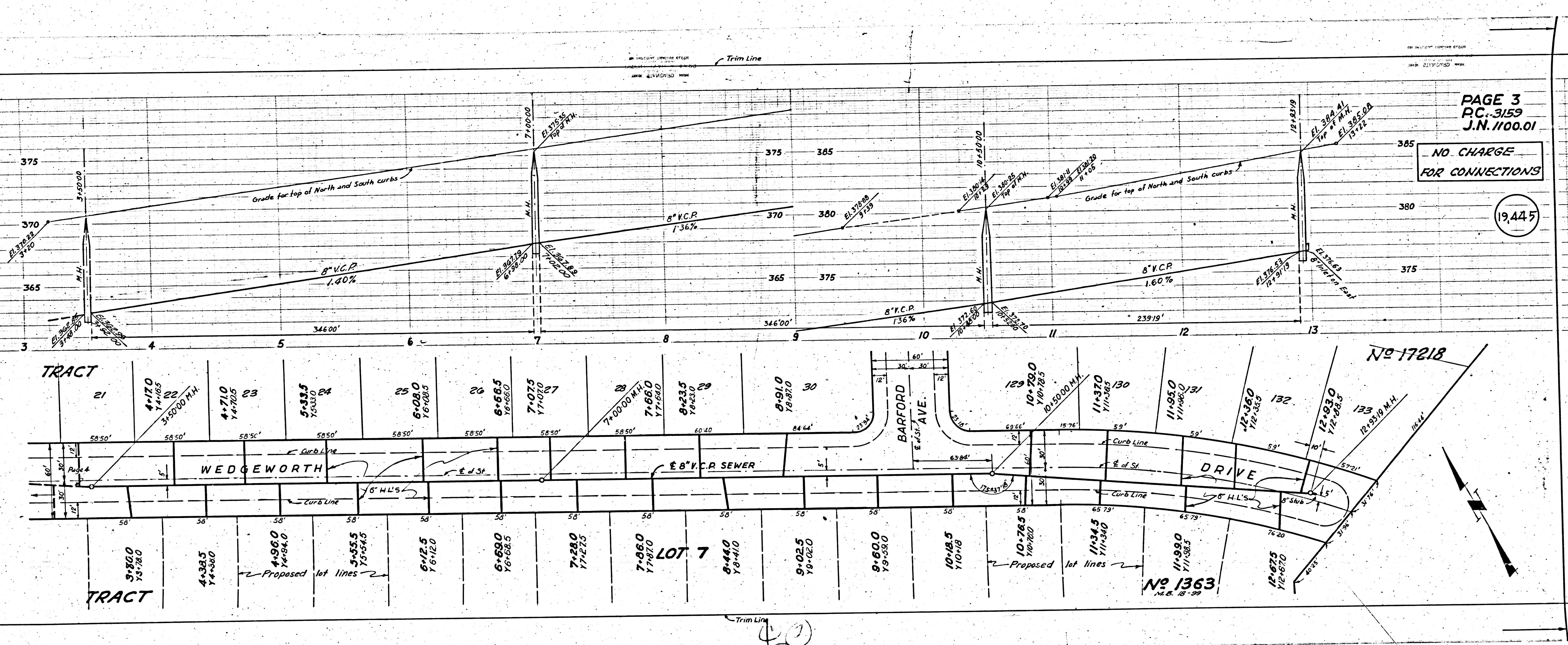
NO CHARGE  
 FOR CONNECTIONS

19444



22

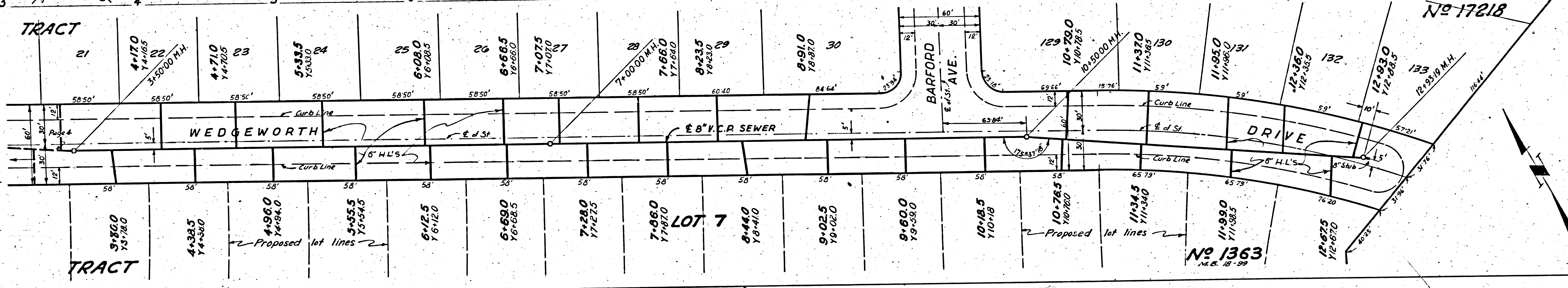
K



PAGE 3  
 PC. 3159  
 J.N. 1100.01

NO CHARGE  
 FOR CONNECTIONS

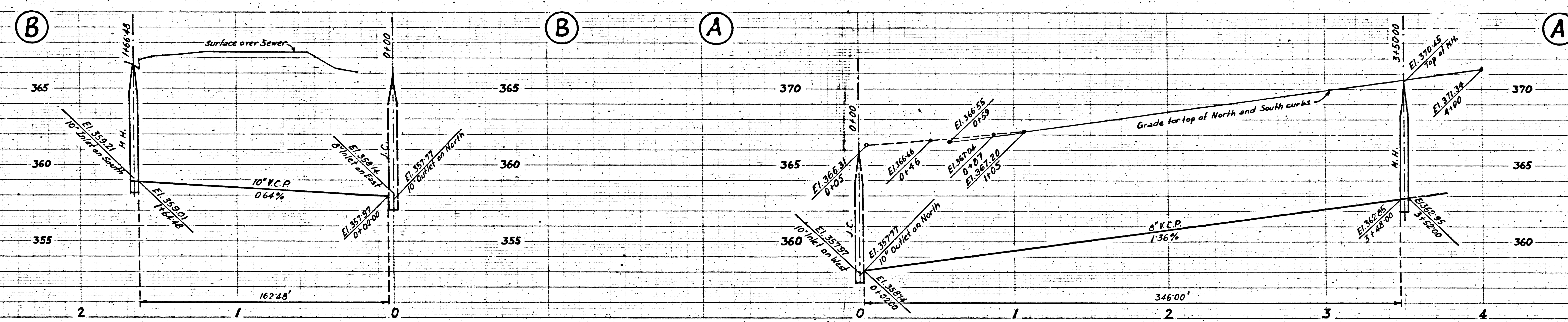
19,445



No 17218

No 1363

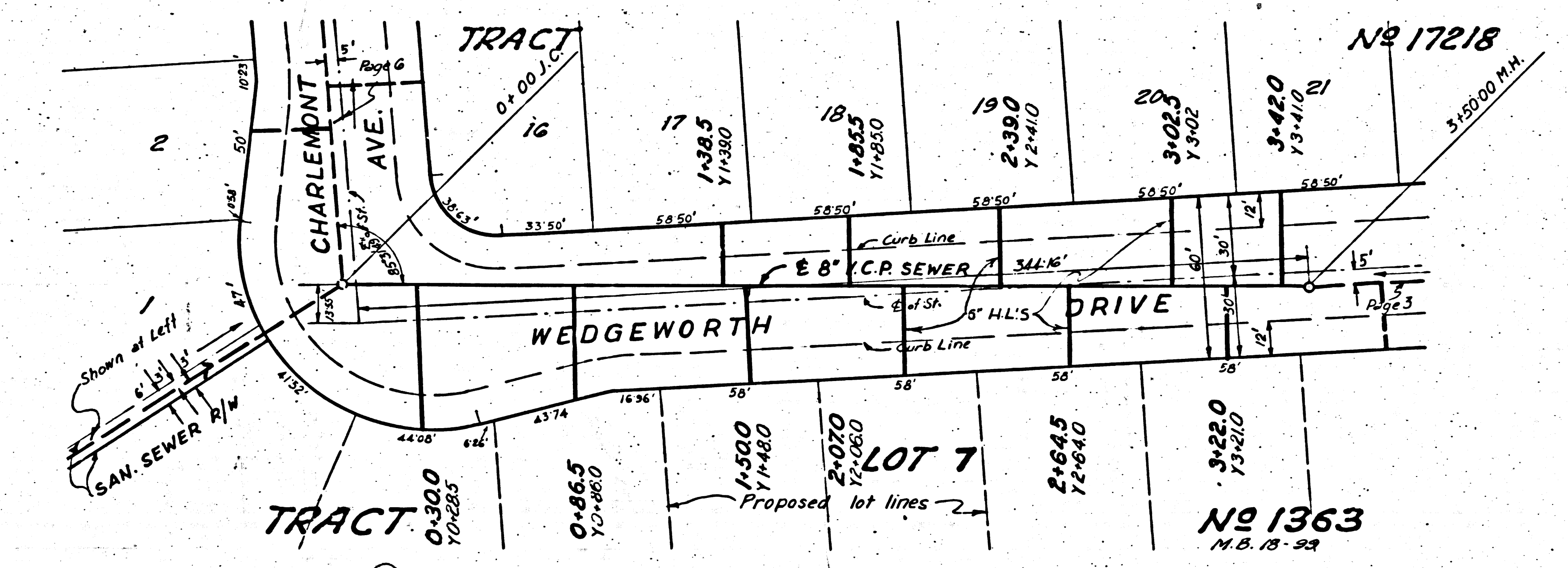
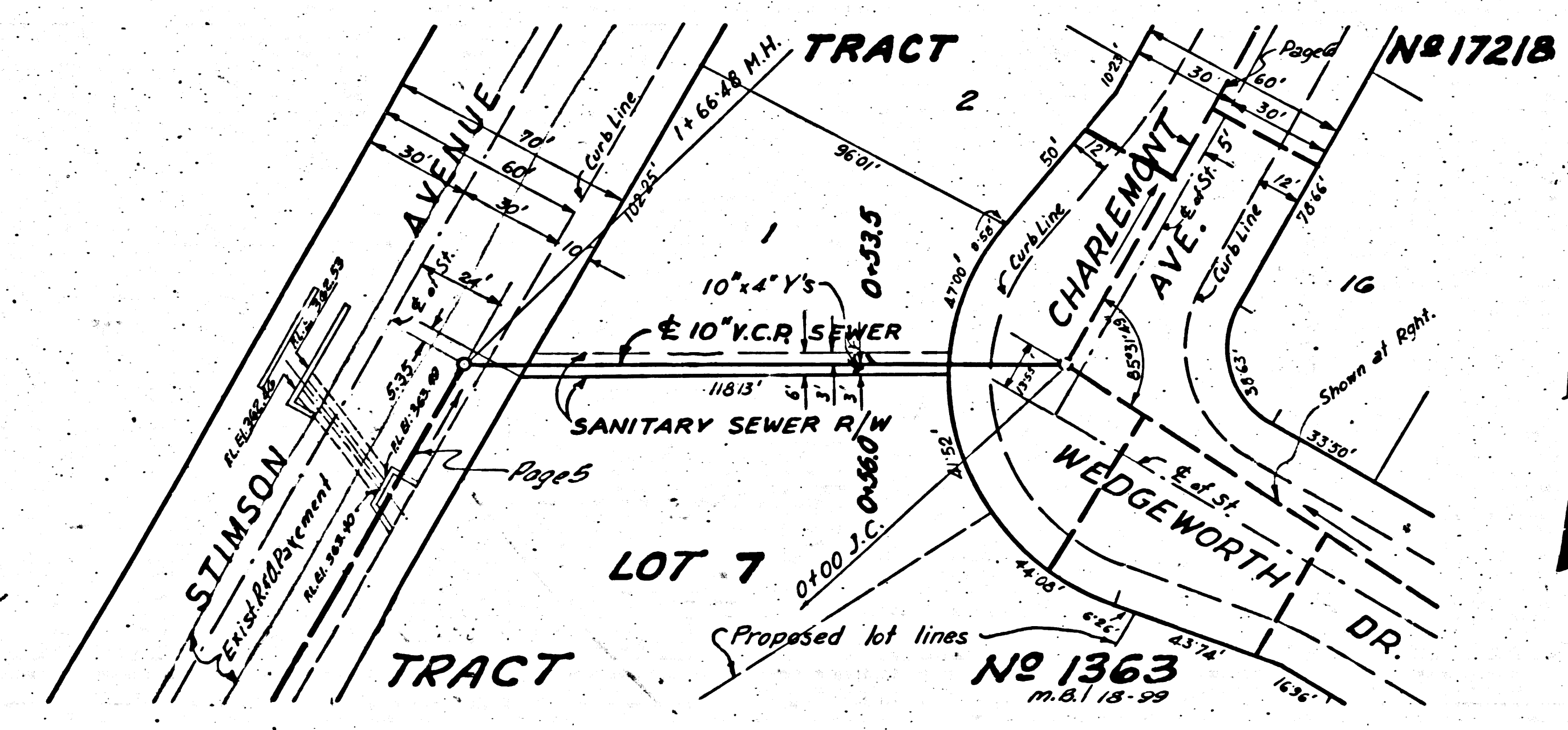
Trim Line



PAGE 4  
P.C. 3159  
J.N. 110001

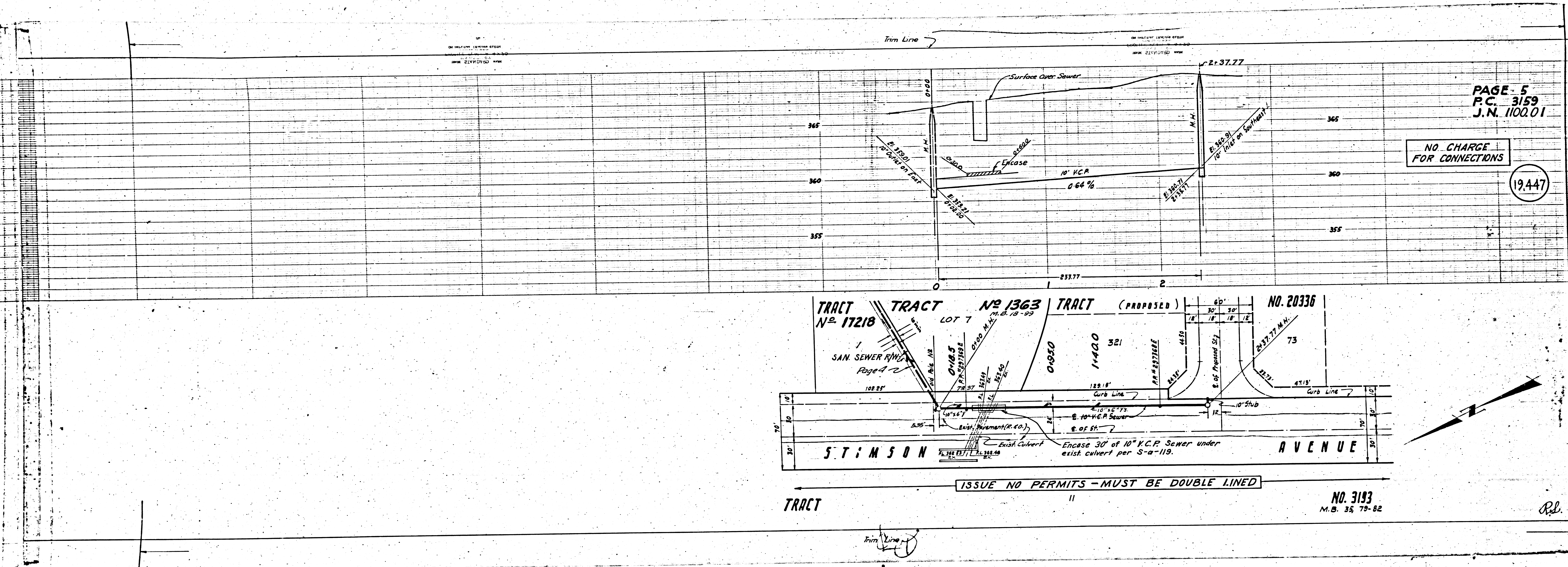
NO CHARGE  
FOR CONNECTIONS

19,446



PC 3159

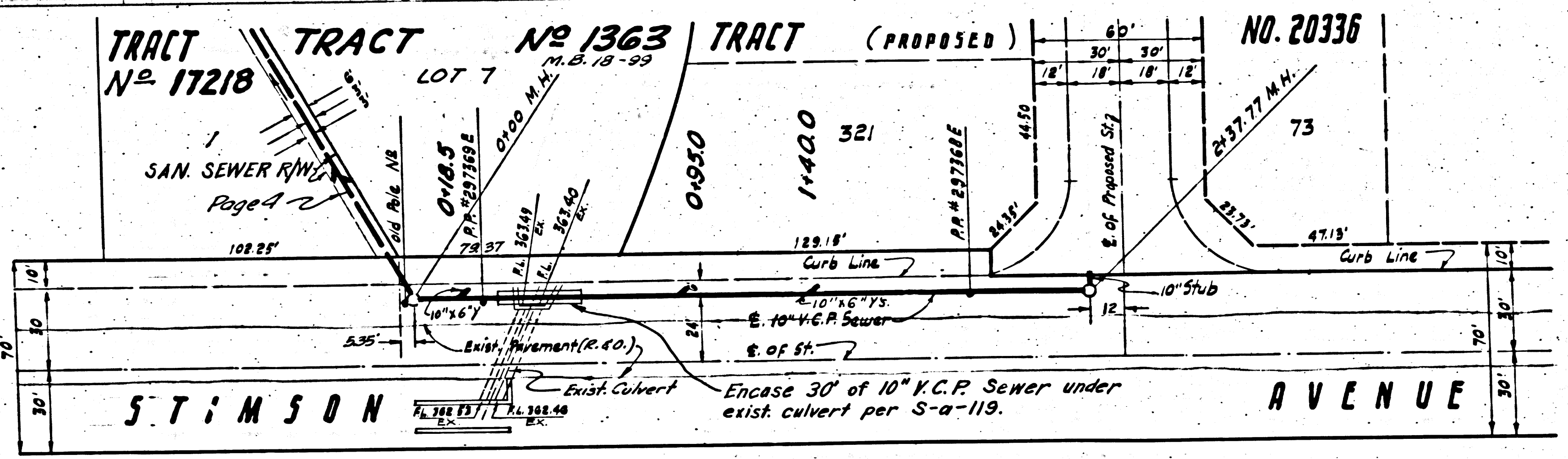
12121



PAGE - 5  
 P.C. 3153  
 J.N. 1100.01

NO CHARGE  
 FOR CONNECTIONS

19,447



ISSUE NO PERMITS - MUST BE DOUBLE LINED

NO. 3153  
 M.B. 35 75-82

2

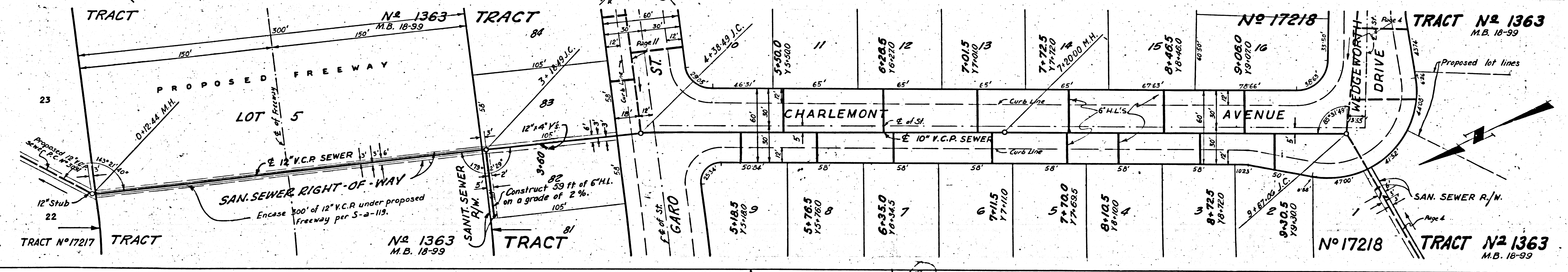
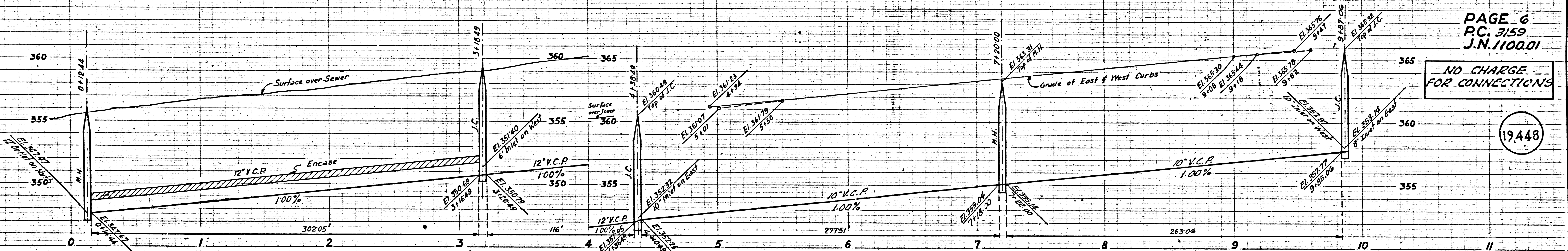
TRACT NO. 17218  
 P.C. 3153

5

PAGE 6  
P.C. 3159  
J.N. 1100.01

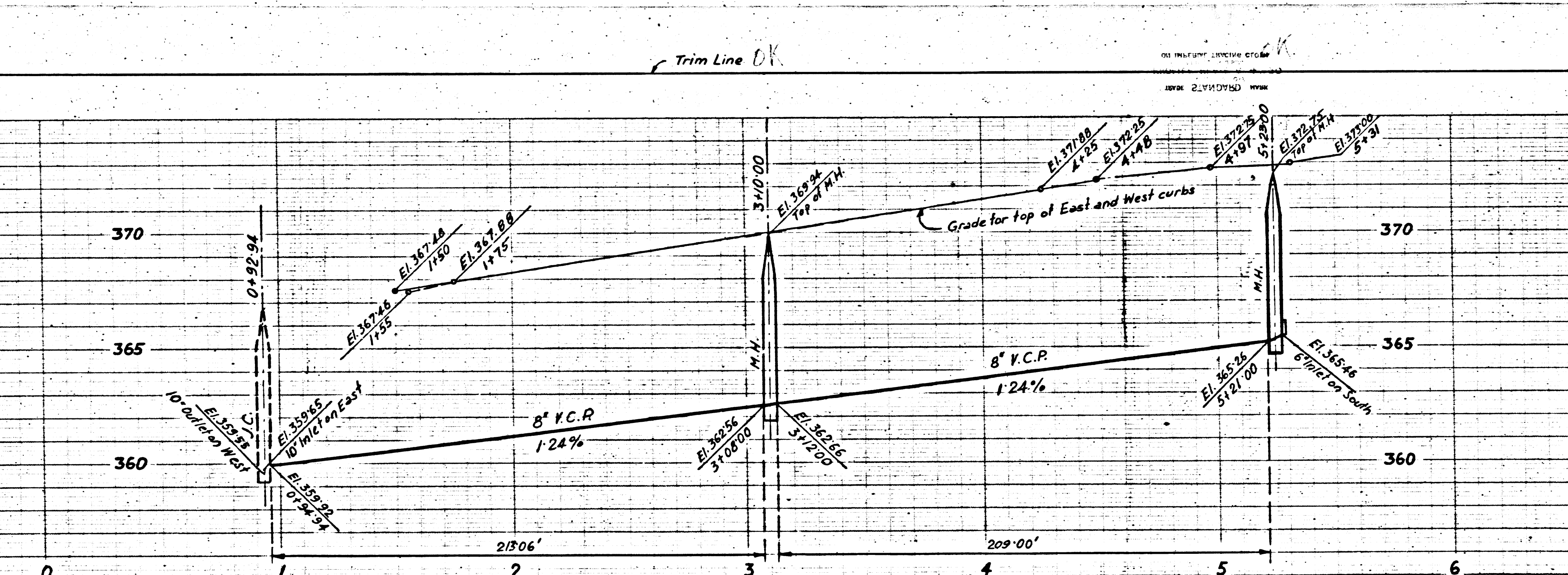
NO CHARGE  
FOR CONNECTIONS

19448



3

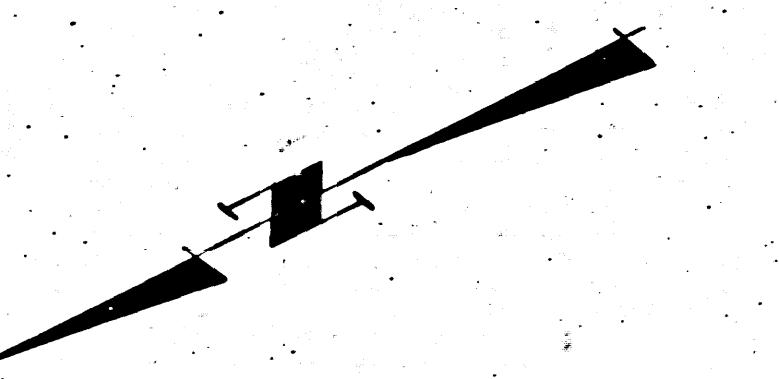
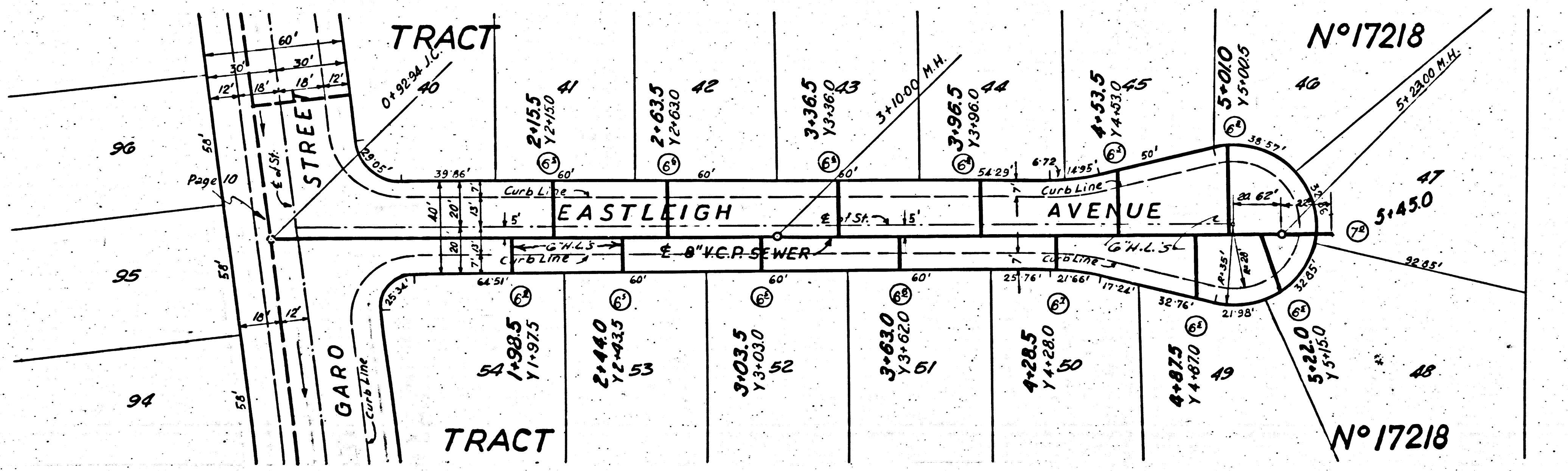
PC 3159



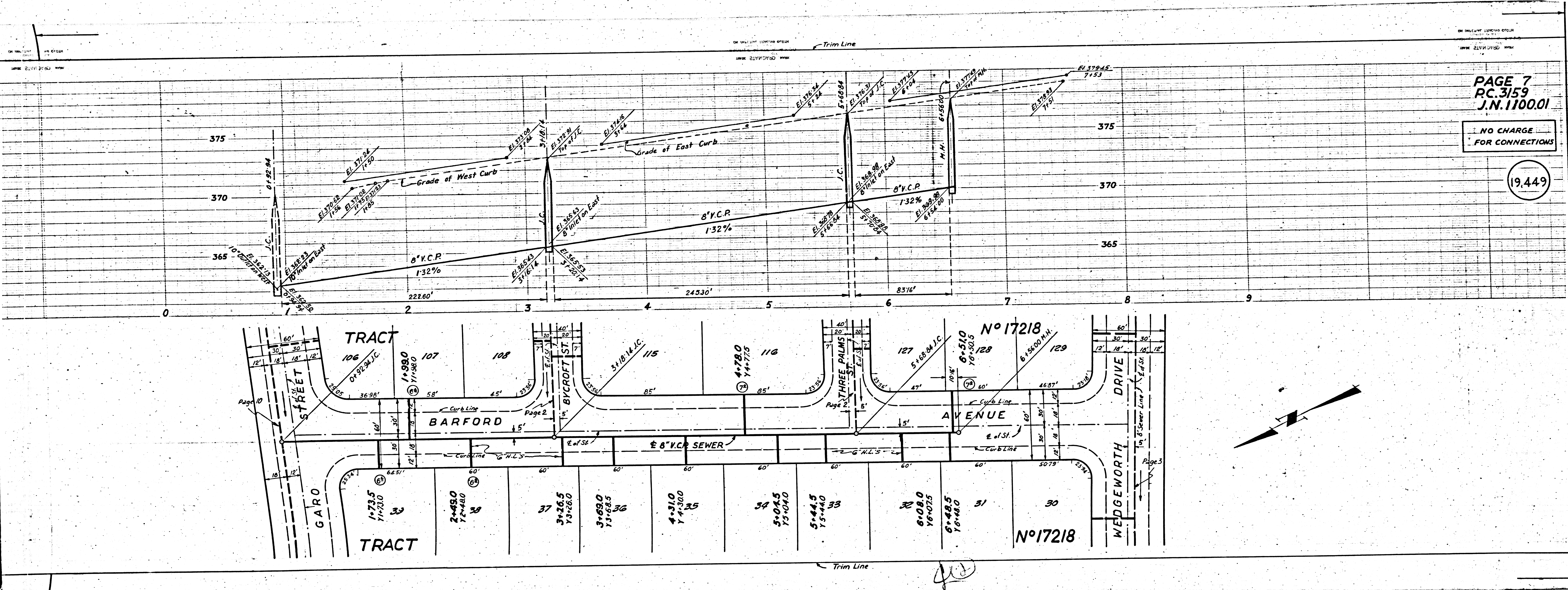
PAGE 8  
PC. 3159  
J.N.110001

NO CHARGE  
FOR CONNECTIONS

19.450



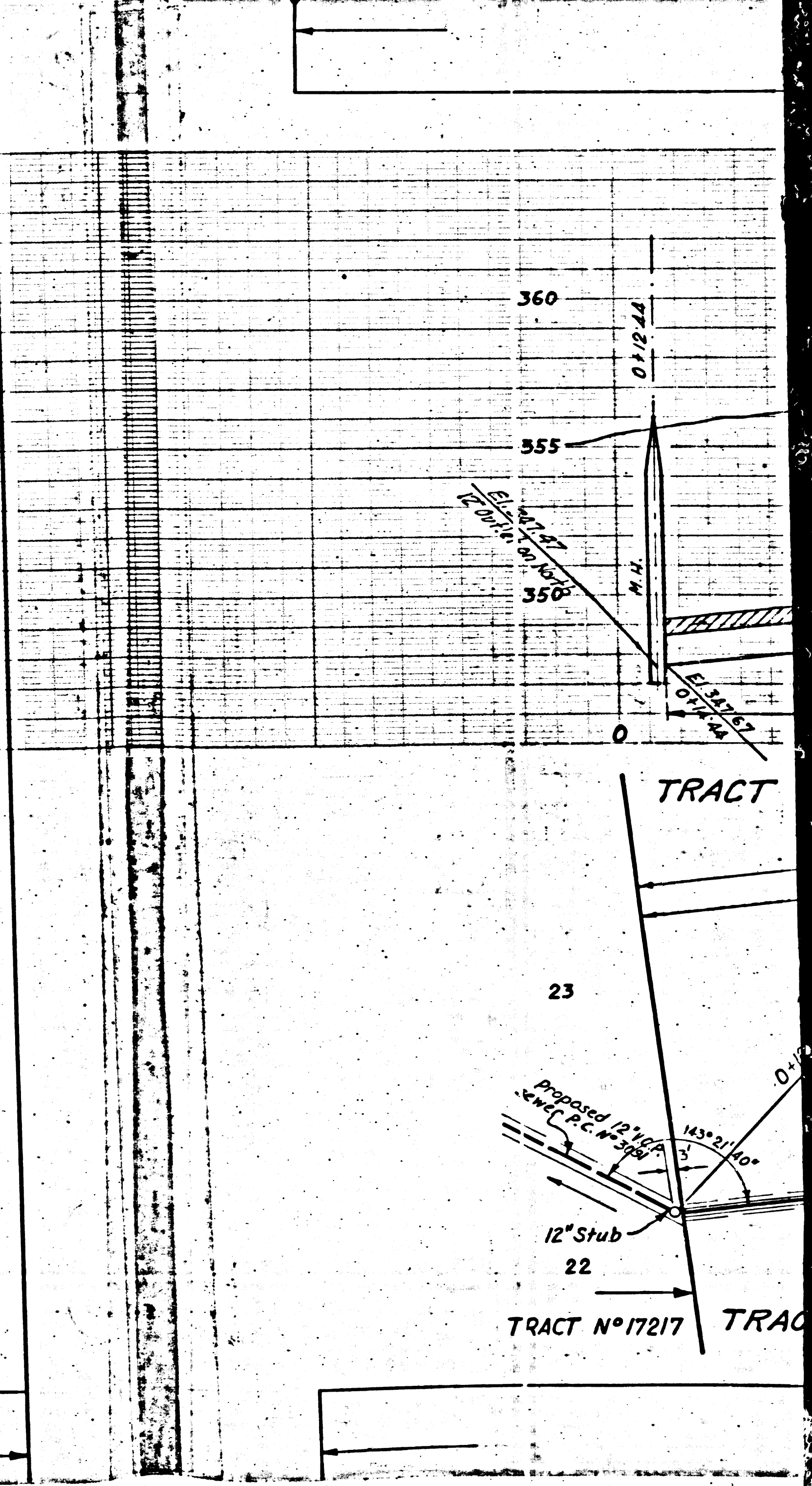
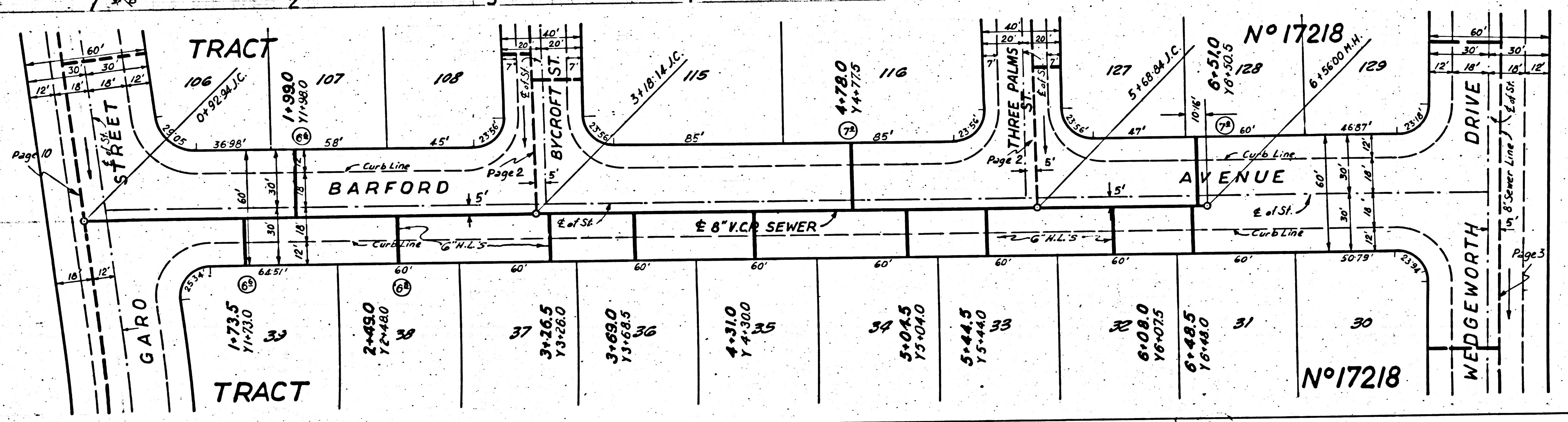
40



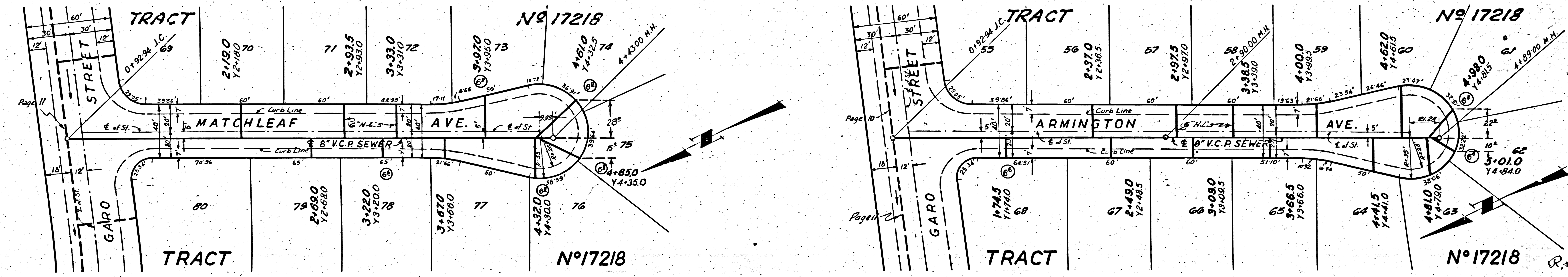
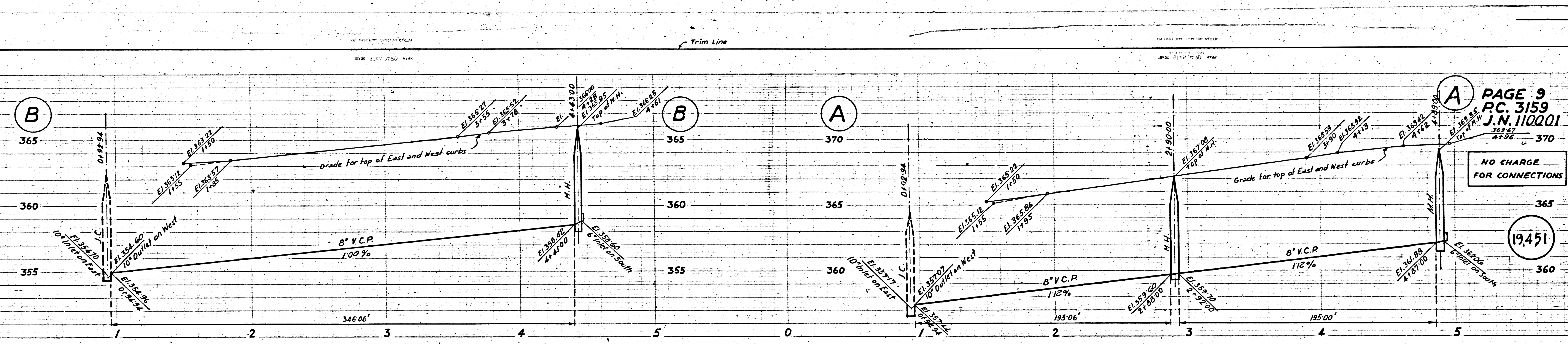
PAGE 7  
RC.3159  
J.N.1100.01

NO CHARGE  
FOR CONNECTIONS

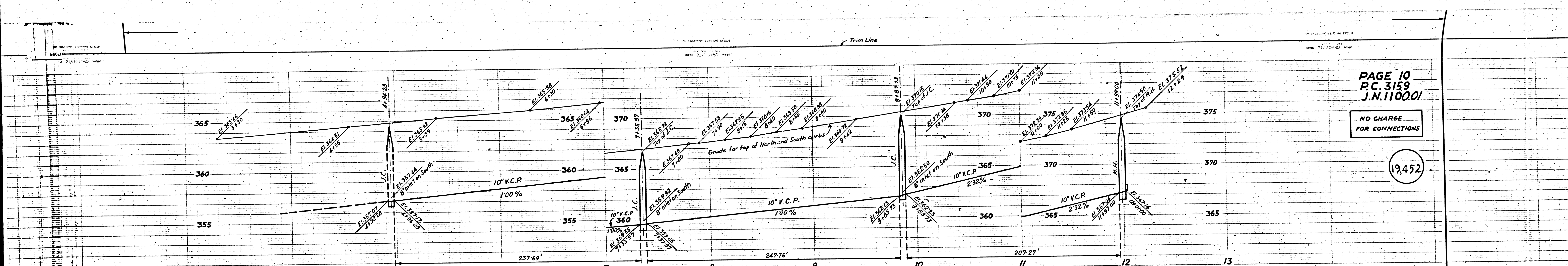
(19,449)







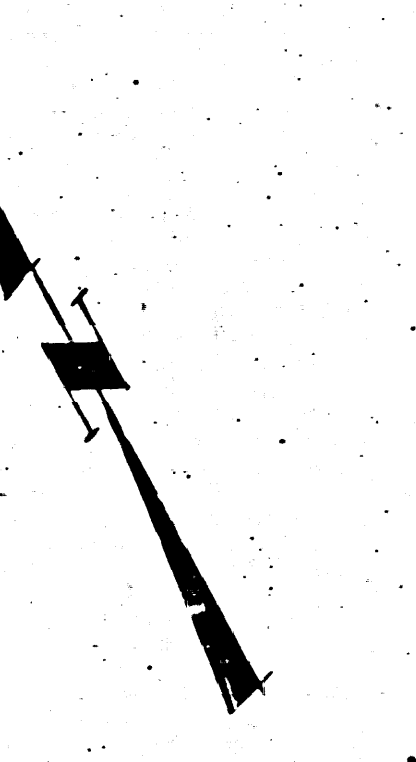
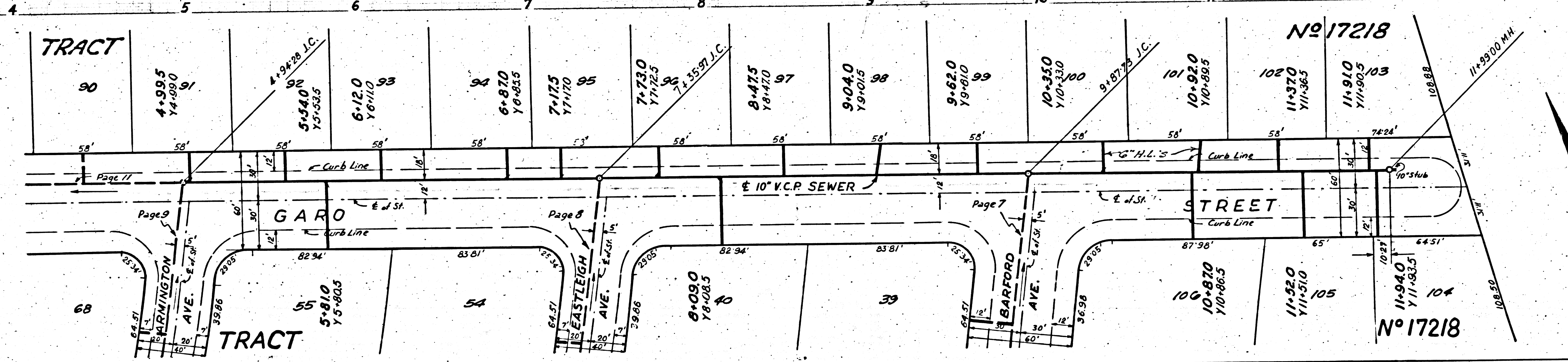
TRACT NO. 17218  
 P.C. 3159  
 J.N. 110201  
 PAGE 9  
 NO CHARGE FOR CONNECTIONS  
 19,451

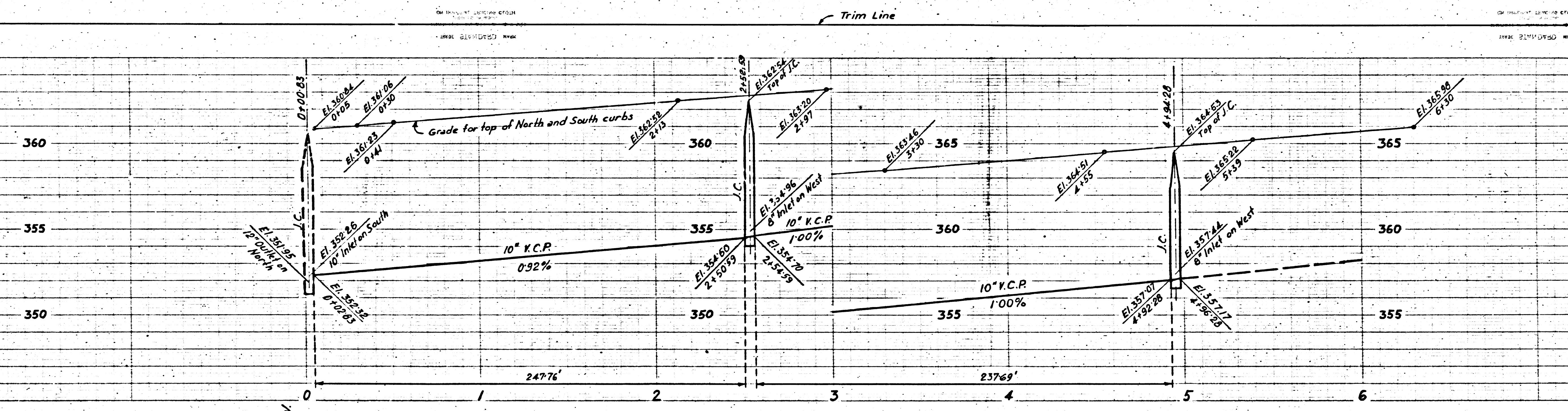


PAGE 10  
P.C. 3159  
J.N. 110001

NO CHARGE  
FOR CONNECTIONS

19452





PAGE 11  
P.C. 3159  
J.N. 1100.01

NO CHARGE  
FOR CONNECTIONS

19,453

PC 3159

