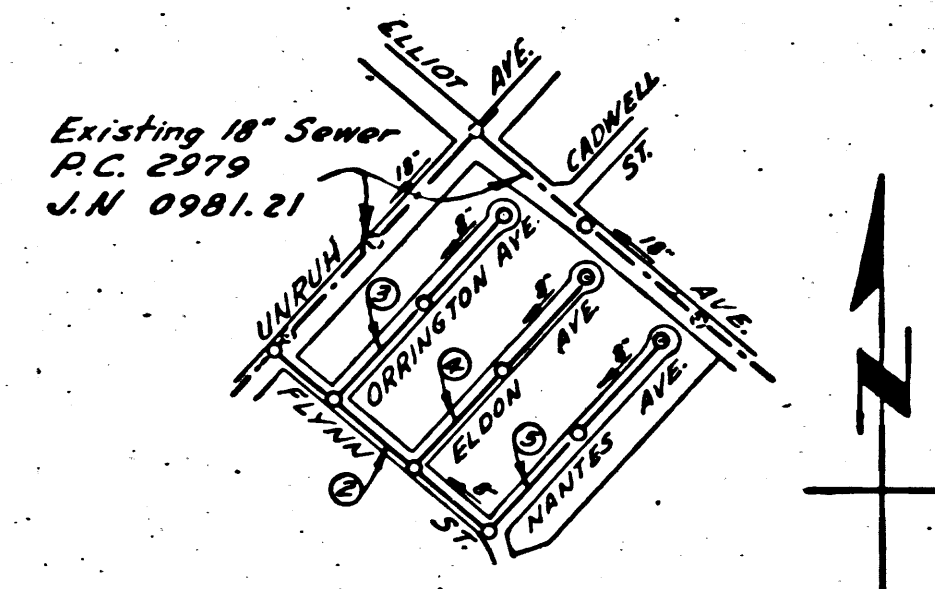


Trim Line
PUENTE BLDG. DIST. NO 2

- NOTE:**
 Provide stakes on the property lines or property lines produced at right angles to the sewer line at the center line of each manhole.
 No representative of the County Engineer will survey or layout any portion of the work.
 The owner or his authorized representative shall furnish the County Engineer with grade sheets and stations for all house laterals and Y branches and shall provide stakes for them at their proper locations with stationing plainly marked. Any change in location shall be requested in writing by the owner or his representative.
 No revisions shall be made in these plans without the approval of the County Engineer.
1. Use standard manhole frames and covers, S-a-117.
 2. Use standard strength pipe except as noted.
 3. Use cement mortar for all vitrified clay pipe joints.
 4. Resurface all trench within paved area to meet L.A. County Road Dept. or California State Highway Dept. requirements in accordance with permit.
 5. Encase four feet of sewer at points of interference with poles, S-a-119.
 6. House laterals to be constructed with inverts at property line 6 feet below curb grade.
 7. All structures shall be brick sewer structures, S-a-104.
 8. For allowable leakage test, use Formula No. 7 Spec's, Sec. 51.
 9. Manhole tops in unimproved Rights-Of-Way to be 6" above finish grade.

B.M. PS-60 Elev. 329.70, F.B. 1244, Pg. 161
 Temple Ave. & Hudson Ave. at E. Int.
 Top of C.S. Monument in hand hole



SHEET NO	PAGES
1	1-5

INDEX MAP
 SCALE: 1"=600'
 TRACT NO 17798
 RC. 3174 - J.N. 1004.11

**COLLECT CHARGES
 AS INDICATED**
L. Carter 7-28-54

PROFILE, ALIGNMENT AND GRADE OF
SANITARY SEWERS
 TO BE CONSTRUCTED IN
TRACT NO 17798

PRIVATE CONTRACT NO. 3174
 W. S. 38
 ONE SHEET
 Scale: VERT. 1"=4'
 HORIZ. 1"=40' SEPT, 1954

PREPARED UNDER THE
 SUPERVISION OF
Henry Jones Reg. C. E. No. 4484
 FOR LEGEND SEE PLAN NO. S-a-64

NOTE:
 Grades to which this improvement is to be constructed are shown on plans and profiles. Grade points for top of curbs, center line of streets, or center line of alleys are shown by circles on profiles. At all points between designated points the grade shall be established so as to conform to a straight line drawn between said designated points.
 Elevations are in feet above U.S.C.S. datum or mean sea level.
 This drawing and the data hereon are hereby made a part of the specifications.
 Work shall be constructed according to specifications on file in the office of the County Engineer and shall be prosecuted only in the presence of the County Engineer.
 Before work can be started, the contractor must obtain a permit to excavate in County streets from the L.A. County Road Dept., 108 W. 2nd St; and make a deposit with the County Engineer, 733 L.A. County Engineering Building, sufficient to cover the cost of construction inspection and record plans.
 Approval of this plan by the County of Los Angeles does not constitute a representation as to the accuracy of the location of or the existence or non-existence of any underground utility, pipe, or structure within the limits of this project. This note applies to all sheets.
 If work is to be done in a State Highway, a permit must be obtained from the State of California, Division of Highways, 120 South Spring Street.

COUNTY OF LOS ANGELES, CALIFORNIA

Approved, William J. Fox, County Engineer
W. J. Fox
 Sanitation Engineer

Approved, A. M. Rawm
 CHIEF ENGR. CO. SAN. DIST. NO. 15
A. M. Rawm
 Office Engineer

Checked by *Arthur* 7-28-54
 Office of County Engineer, Reg. C. E. No. 7860

RC. 3174
 J.N. 1004.12
 PAGE 1

19,130

TRACT NO 17798

RC. 3174
 J.N. 1004.12

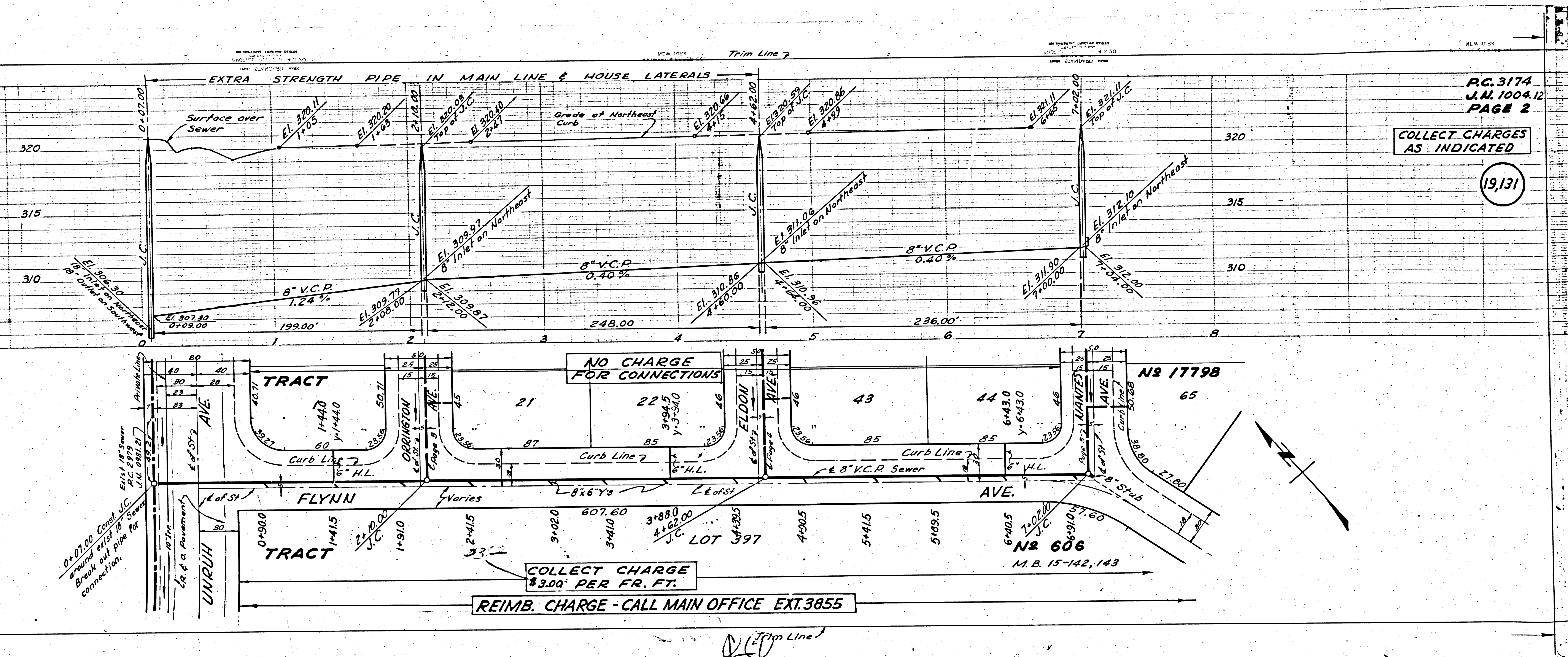
Revised 10-21-54 Wilson

Trim Line

P.C. 3174
J.N. 1004.12
PAGE 3

NO CHARGE
FOR CONNECTIONS

19,132



P.C. 3174
J.N. 1004.12
PAGE 2

COLLECT CHARGES
AS INDICATED

19,131

NO CHARGE
FOR CONNECTIONS

COLLECT CHARGE
\$3.00 PER FR. FT.
REIMB. CHARGE - CALL MAIN OFFICE EXT.3855

0+07.00 Const J.C.
around exist. 8" Sewer
Break out pipe for
connection.

N2 606
M.B. 15-142, 143

N2 17798

LOT 397

TRACT

TRACT

Trim Line 7

P.C. 3174
J.M. 1004.12
PAGE 4

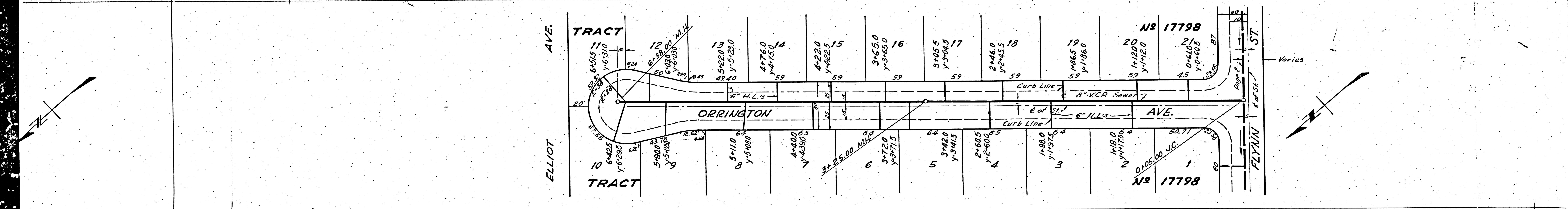
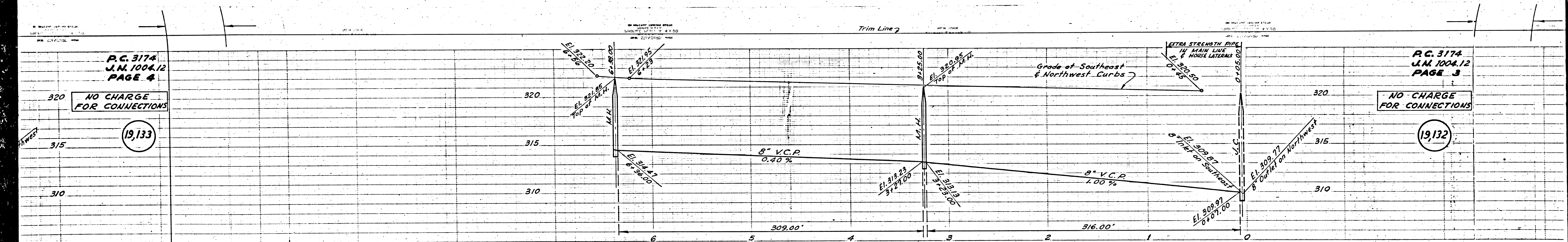
NO CHARGE
FOR CONNECTIONS

19,133

P.C. 3174
J.M. 1004.12
PAGE 3

NO CHARGE
FOR CONNECTIONS

19,132



13

P.C. 3174
J.N. 1004.12
PAGE 5

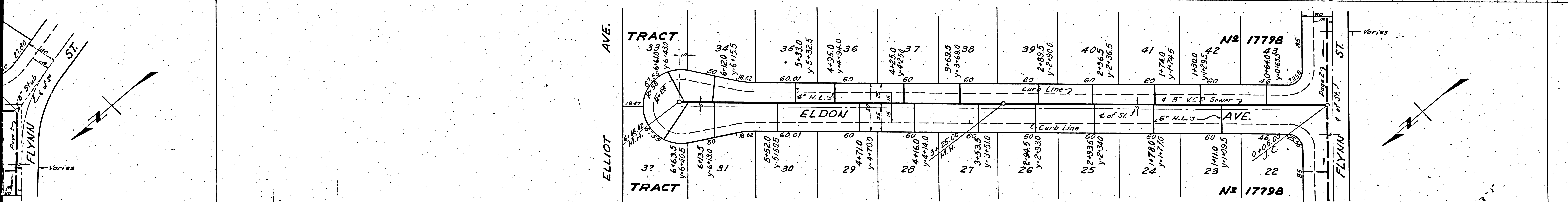
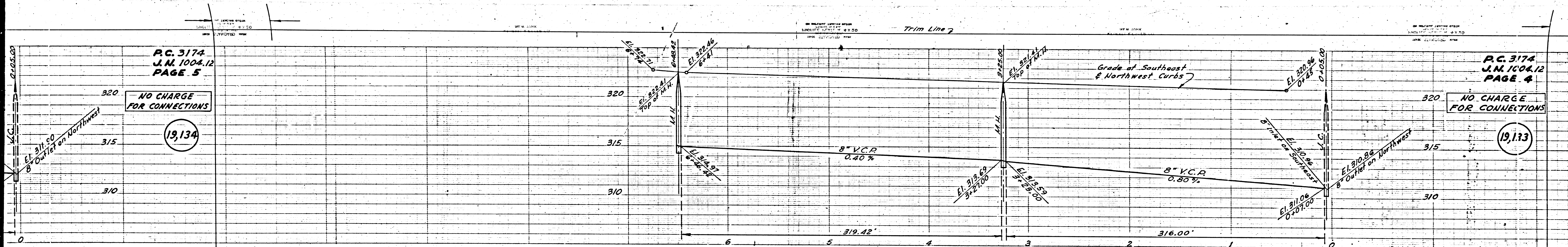
NO CHARGE
FOR CONNECTIONS

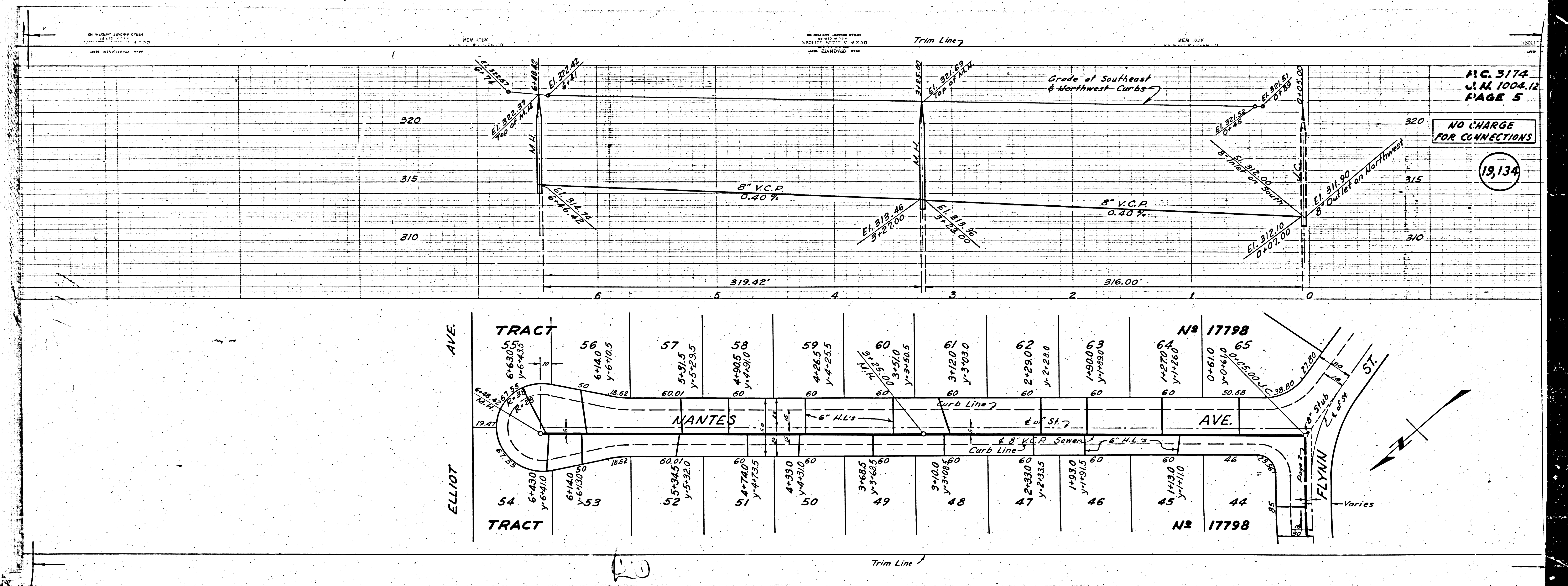
19,134

P.C. 3174
J.N. 1004.12
PAGE 4

NO CHARGE
FOR CONNECTIONS

19,133





P.C. 3174
 J.M. 1004.12
 PAGE 5

NO CHARGE
 FOR CONNECTIONS

19,134

Lot No.	Area (sq. ft.)	Dimensions
44	1430	11x110
45	1430	11x110
46	1930	11x115
47	2430	11x215
48	3100	11x280
49	3485	11x315
50	4330	11x390
51	4740	11x430
52	5345	11x485
53	6140	11x555
54	6430	11x585
55	6130	11x550
56	6140	11x555
57	5715	11x515
58	4905	11x445
59	4265	11x385
60	3510	11x315
61	3120	11x280
62	2290	11x205
63	1900	11x170
64	1270	11x115
65	0710	11x65

RU