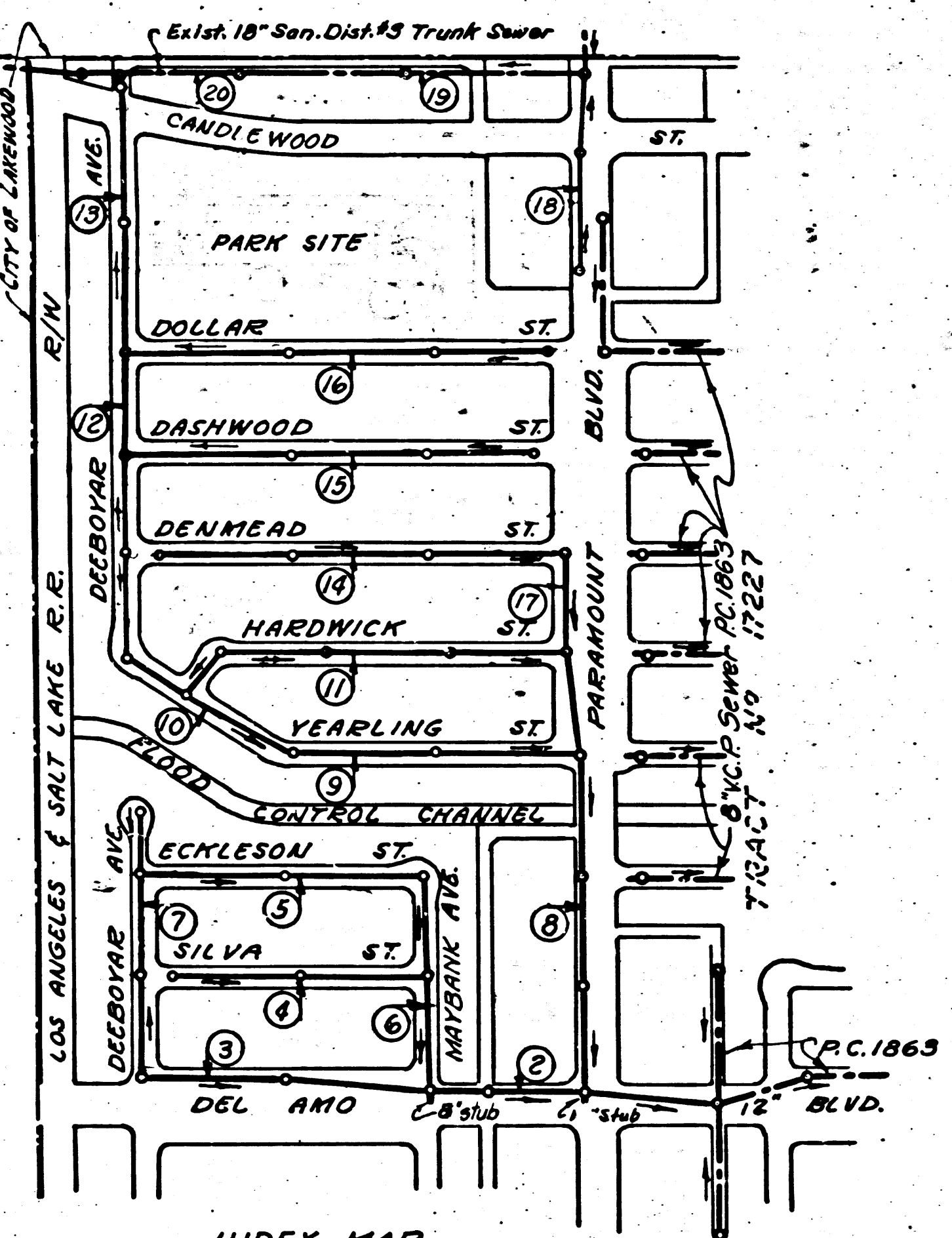


B.M. 57163 pg. 76 - Adj. E.L. 55223
 N. West L. St. Straddle near &
 Intersection of South St. &
 Lakewood Blvd.

SHEET NO.	PAGES
1	1-5
2	6-10
3	11-15
4	16-20



INDEX MAP
 TRACT NO. 18100
 P.C. 3189
 J.N. 1008.71
 Scale 1" = 400'

NO CHARGE
 FOR CONNECTIONS
 of L.A. 7-27-54

Checked 2-15-55 *[Signature]*

BELLFLOWER BLDG. DIST. No. 4

- NOTE:
 NO REPRESENTATIVE OF THE COUNTY ENGINEER WILL SURVEY OR LAY OUT ANY PORTION OF THE WORK.
 THE OWNER OR HIS AUTHORIZED REPRESENTATIVE SHALL FURNISH THE COUNTY ENGINEER WITH GRADE SHEETS AND STATIONS FOR ALL HOUSE LATERALS AND Y BRANCHES AND SHALL PROVIDE STAKES FOR THEM AT THEIR PROPER LOCATIONS WITH STATIONING PLAINLY MARKED. ANY CHANGE OF LOCATION SHALL BE REQUESTED IN WRITING BY THE OWNER OR HIS REPRESENTATIVE.
 NO REVISIONS SHALL BE MADE IN THESE PLANS WITHOUT APPROVAL OF THE COUNTY ENGINEER.
1. USE STANDARD MANHOLE FRAMES AND COVERS, S-a-117, EXCEPT AS NOTED
 2. USE STANDARD STRENGTH PIPE EXCEPT AS NOTED.
 3. USE CEMENT MORTAR FOR ALL VITRIFIED CLAY PIPE JOINTS.
 4. RESURFACE ALL TRENCH WITHIN PAVED AREA TO MEET L.A. COUNTY ROAD DEPT. REQUIREMENTS IN ACCORDANCE WITH PERMIT.
 5. ENCASE FOUR FEET OF SEWER AT POINTS OF INTERFERENCE WITH POLES, S-a-119.
 6. HOUSE LATERALS TO BE CONSTRUCTED WITH INVERT AT PROPERTY LINE 6 FEET BELOW CURB GRADE EXCEPT AS NOTED
 7. ALL STRUCTURES SHALL BE BRICK SEWER STRUCTURES, S-a-104, EXCEPT AS NOTED.
 8. PROVIDE STAKES ON THE PROPERTY LINES OR PROPERTY LINES PRODUCED, AT RIGHT ANGLES TO THE SEWER LINE AT THE CENTER LINE OF EACH MANHOLE.
 9. FOR ALLOWABLE LEAKAGE TEST USE FORMULA NO. II SPECS. 1 SEC. 51.

before breaking into any existing structure
 and before final acceptance of this work,
 County Sanitation District should be notified
 in order that required inspection may be made.

ENGINEERING SERVICE CORPORATION					
1127 W. WASHINGTON BLVD.					
LOS ANGELES 15, CALIF.			PR. 7281		
REVISIONS			TRACED BY		
			DESIG'D BY <i>[Signature]</i>		
			CK'D BY		
			SUBMITTED		
SUB STRUCTURES OK'D					
W. O. NO.	DWG. NO.	DATE	SCALE	L.B.	F.B.
5977-110		Sept. 1954	As Noted	777	

PROFILE, ALIGNMENT AND GRADE OF
SANITARY SEWERS
 TO BE CONSTRUCTED IN
TRACT No. 18100
 PRIVATE CONTRACT NO. 3189
 W. S. 30
 SHEET 1 OF 4 SHEETS
 SCALE: VERT. 1" = 4'
 HOR. 1" = 40'
 SEPTEMBER 1954
 PREPARED IN THE OFFICES OF
 ENGINEERING SERVICE CORPORATION
 BY *[Signature]*
 REG. C. E. NO. 3692

FOR LEGEND
 SEE PLAN NO. S-a-64

NOTE:
 GRADES TO WHICH THIS IMPROVEMENT IS TO BE CONSTRUCTED ARE SHOWN ON PLANS AND PROFILES. GRADE POINTS FOR TOP OF CURB, CENTER LINE OF STREETS, OR CENTER LINE OF ALLEYS ARE SHOWN BY CIRCLES ON PROFILES. AT ALL POINTS BETWEEN DESIGNATED POINTS THE GRADE SHALL BE ESTABLISHED SO AS TO CONFORM TO A STRAIGHT LINE DRAWN BETWEEN SAID DESIGNATED POINTS.
 ELEVATIONS ARE IN FEET ABOVE U. S. G. S. DATUM OR MEAN SEA LEVEL.
 THIS DRAWING AND THE DATA HEREON ARE HEREBY MADE A PART OF THE SPECIFICATIONS.
 WORK SHALL BE CONSTRUCTED ACCORDING TO SPECIFICATIONS ON FILE IN THE OFFICE OF THE COUNTY ENGINEER AND SHALL BE PROSECUTED ONLY IN THE PRESENCE OF THE COUNTY ENGINEER.
 BEFORE WORK CAN BE STARTED THE CONTRACTOR MUST OBTAIN A PERMIT TO EXCAVATE IN COUNTY STREETS FROM THE L.A. COUNTY ROAD DEPT. 108 W. 2ND ST. AND MAKE A DEPOSIT WITH THE COUNTY ENGINEER, 733 COUNTY ENGINEERING BUILDING SUFFICIENT TO COVER THE COST OF CONSTRUCTION INSPECTION AND RECORD PLANS.
 APPROVAL OF THIS PLAN BY THE COUNTY OF LOS ANGELES DOES NOT CONSTITUTE A REPRESENTATION AS TO THE ACCURACY OF THE LOCATION OF, OR THE EXISTENCE OR NON-EXISTENCE OF, ANY UNDERGROUND UTILITY, PIPE, OR STRUCTURE WITHIN THE LIMITS OF THIS PROJECT.

COUNTY OF LOS ANGELES, CALIFORNIA

APPROVED
 WILLIAM J. FOX
 COUNTY ENGINEER

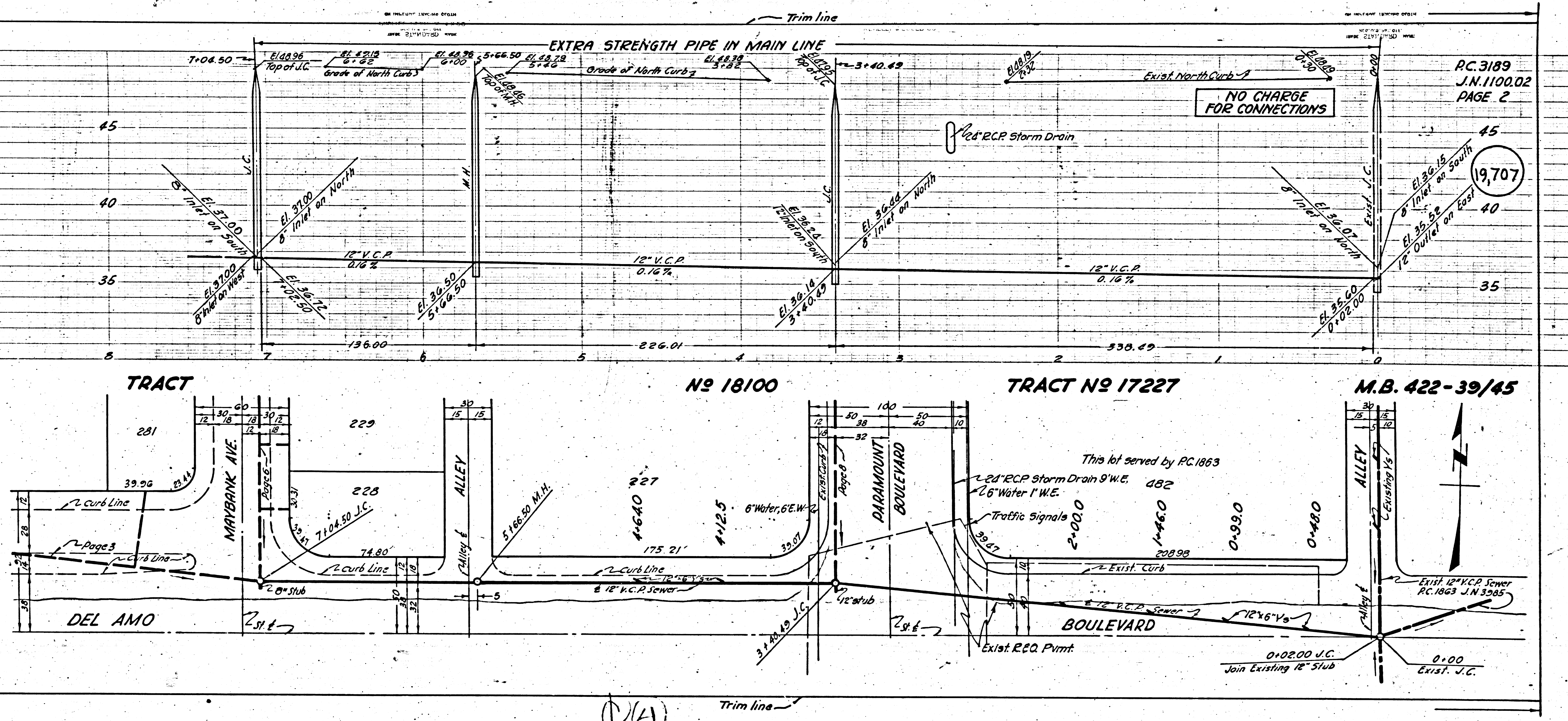
APPROVED, A. M. RAWN
 CHIEF ENGINEER OF COUNTY
 SANITATION DISTRICT NO. 3

BY *[Signature]* BY *[Signature]*

CHECKED BY *[Signature]* 9-22-54
 OFFICE OF COUNTY ENGINEER
 REG. C. E. NO. 7860

P.C. 3189
 J.N. 1008.71
 (20)
 1954
 P.C. 3189
 J.N. 1008.71

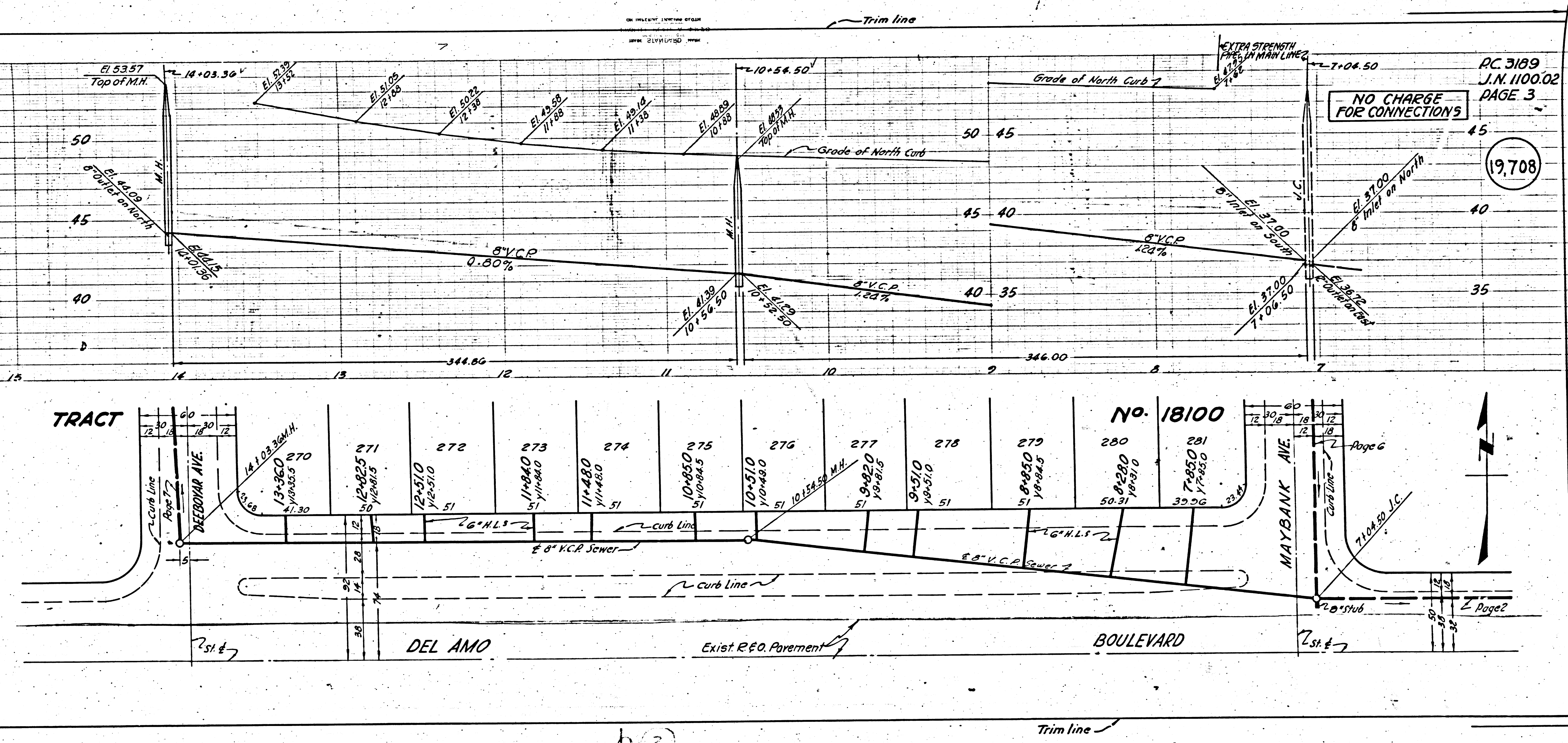
DATE: 10/2/50
 DRAWN BY: J. W. ...
 CHECKED BY: ...



RC. 3189
 J.N. 1100.02
 PAGE 2

19,707

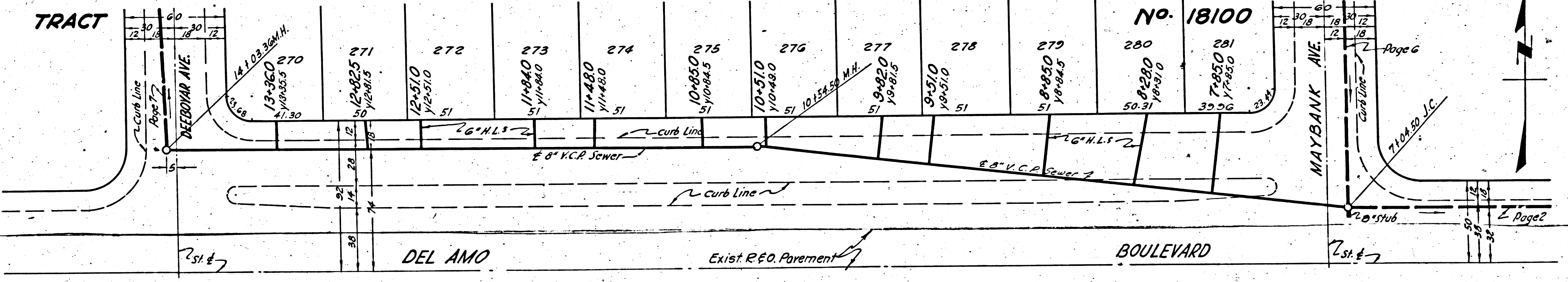
(14)



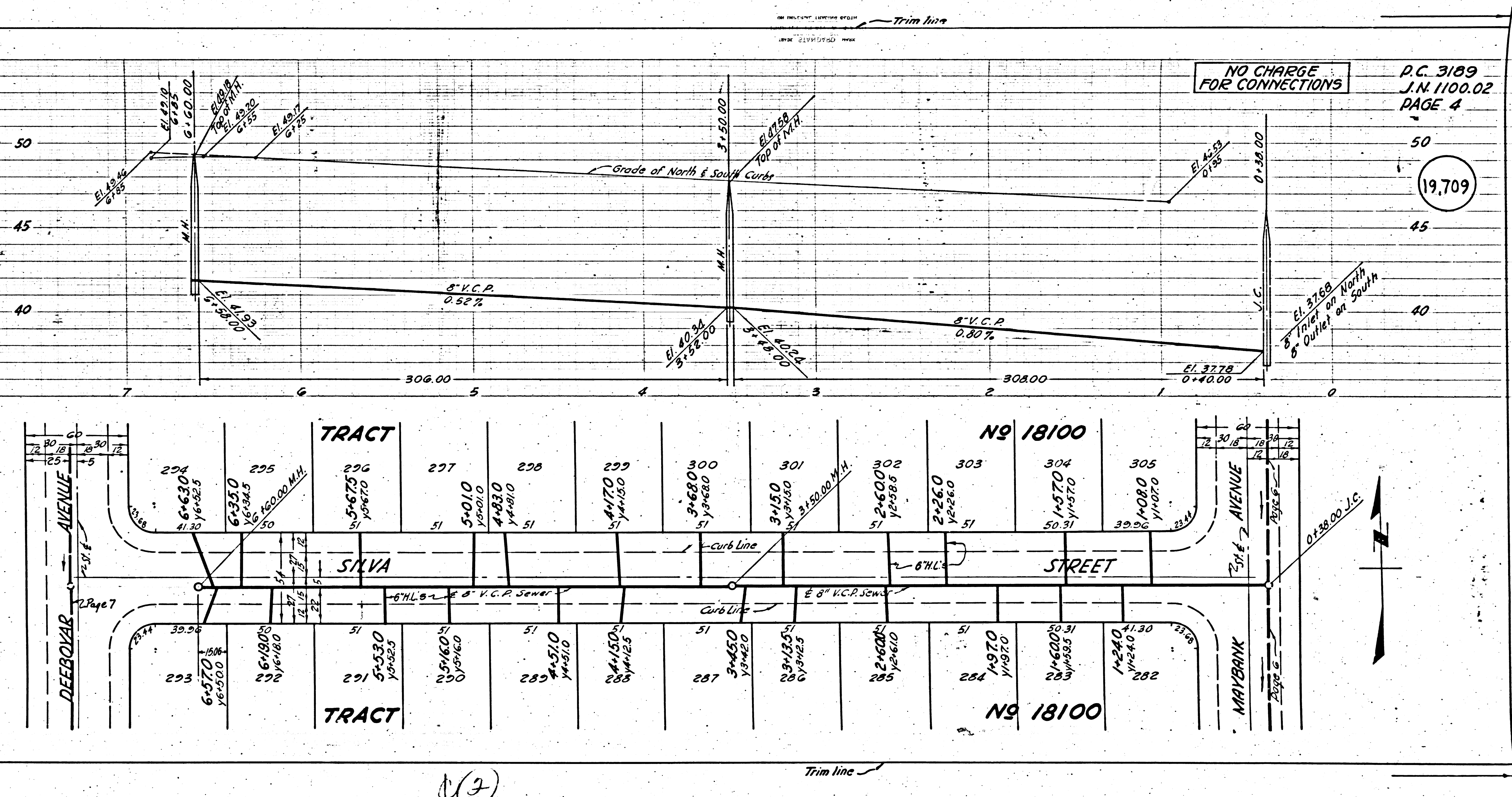
DC 3189
J.N. 1100.02
PAGE 3

NO CHARGE
FOR CONNECTIONS

19,708



3



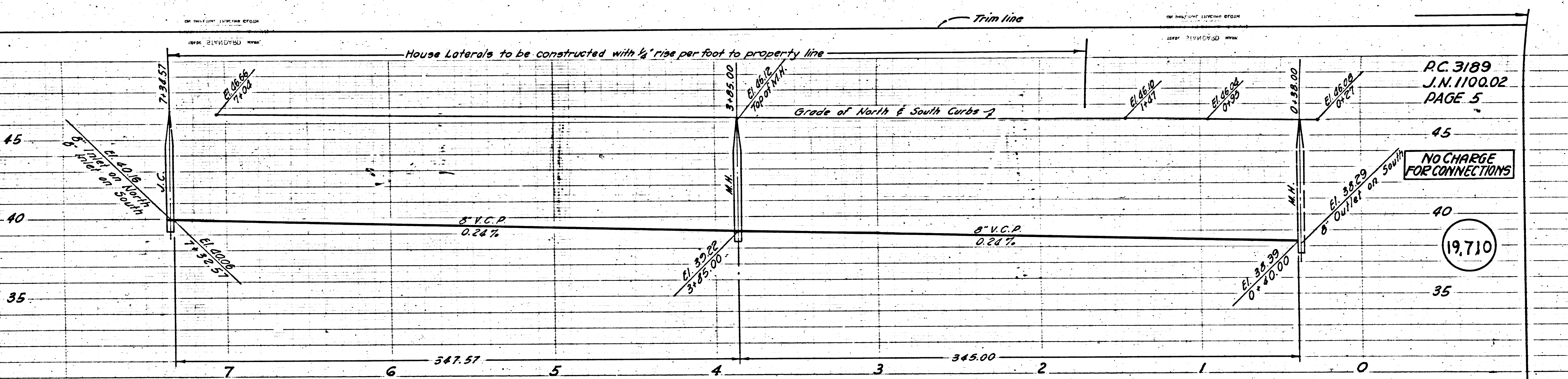
P.C. 3189
 J.N. 1100.02
 PAGE 4

19,709

(13)

NO. 1100 TRACT
8813 39
S. 0011 M.L.

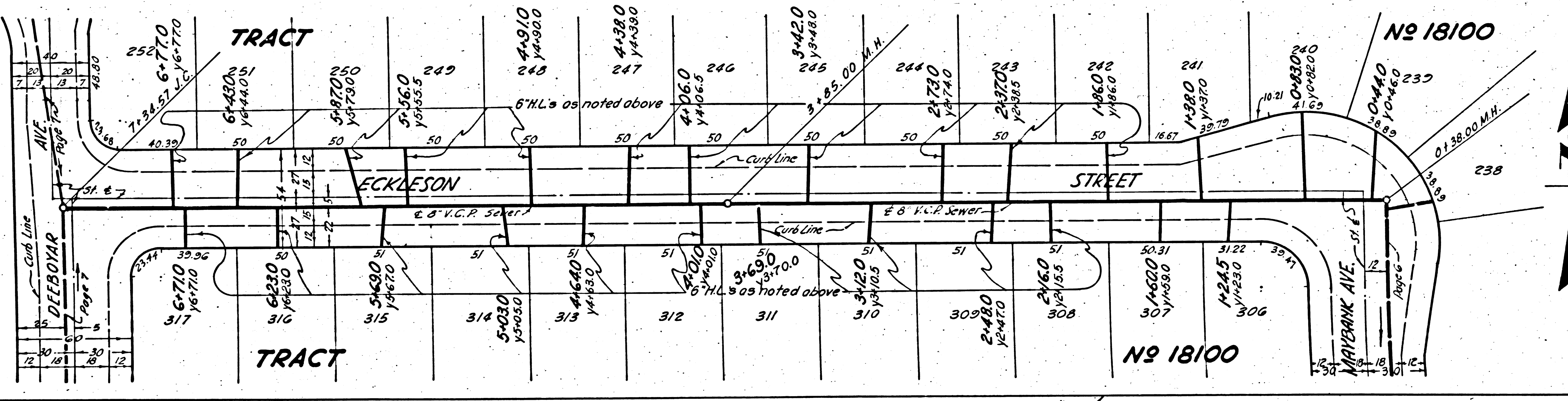
2411 2412
2413 2414



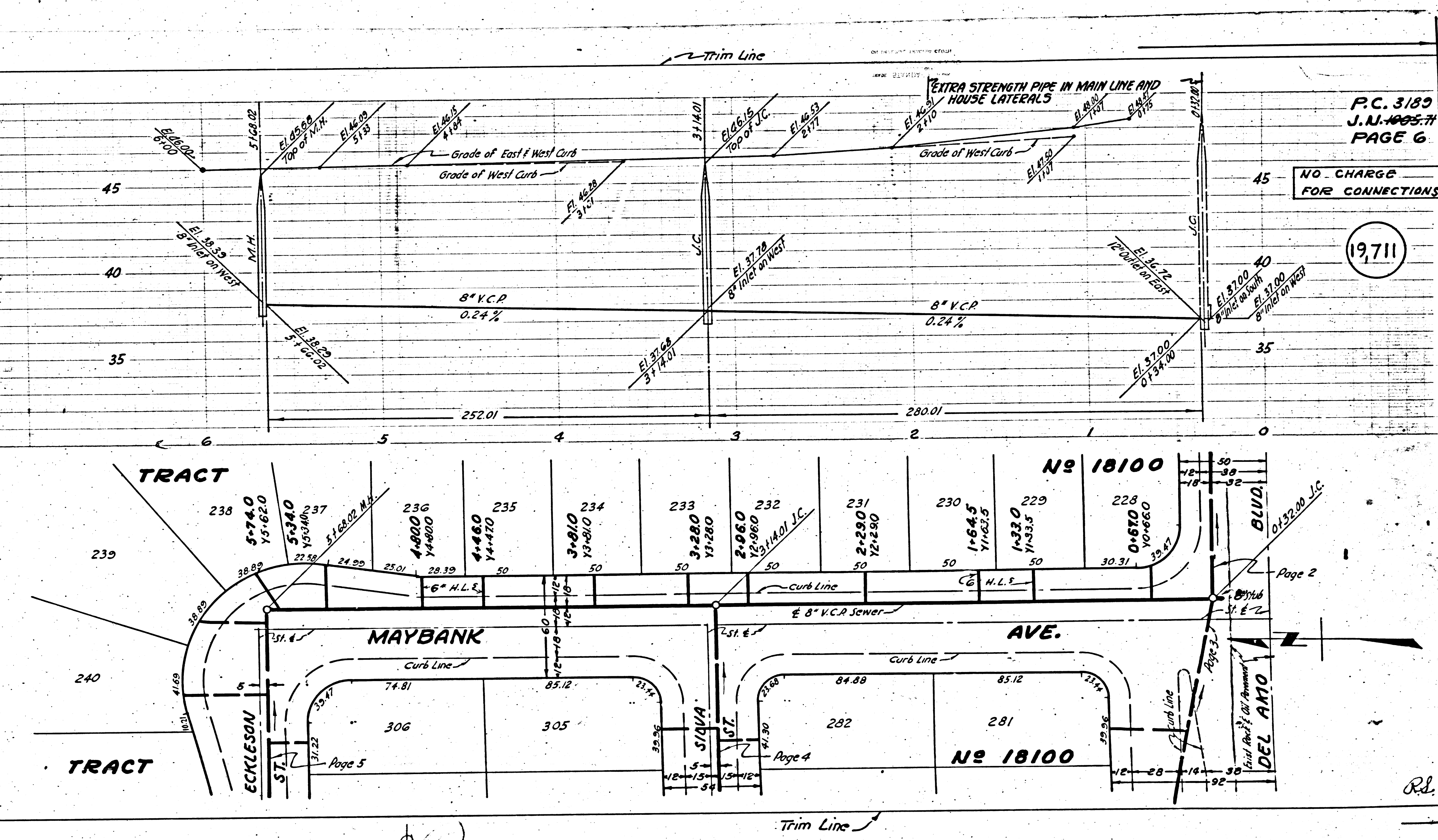
P.C. 3189
J.N. 1100.02
PAGE 5

NO CHARGE
FOR CONNECTIONS

19,710



Trim line



P.C. 3189
J.N. 1005.71
PAGE 6

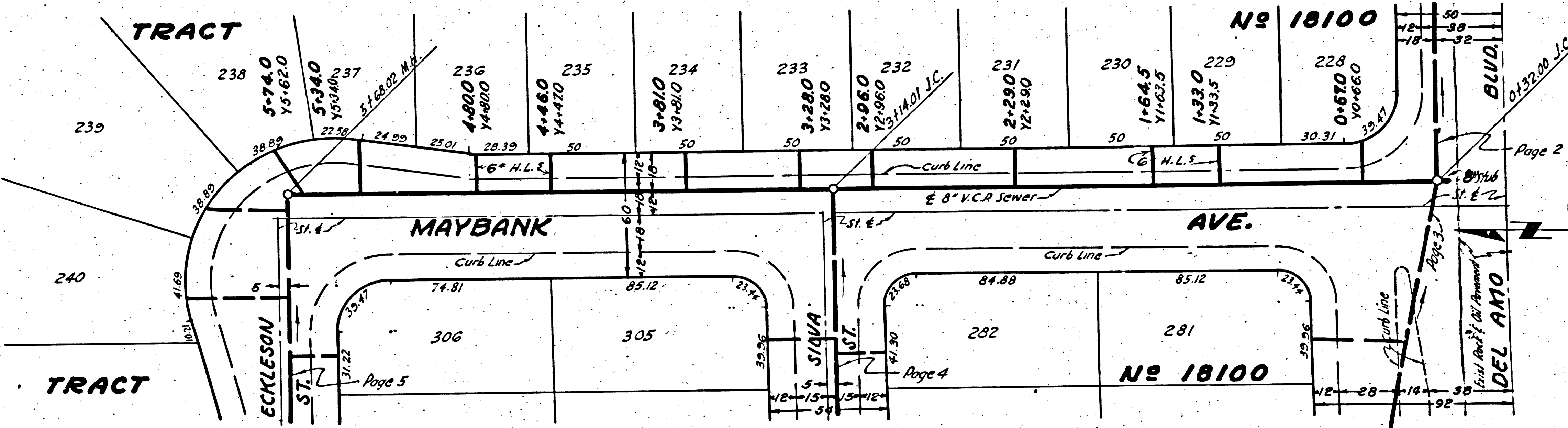
NO CHARGE
FOR CONNECTIONS

1971

P.C. 3189
J.N. 1005.71
②

TRACT 18100

881E.55



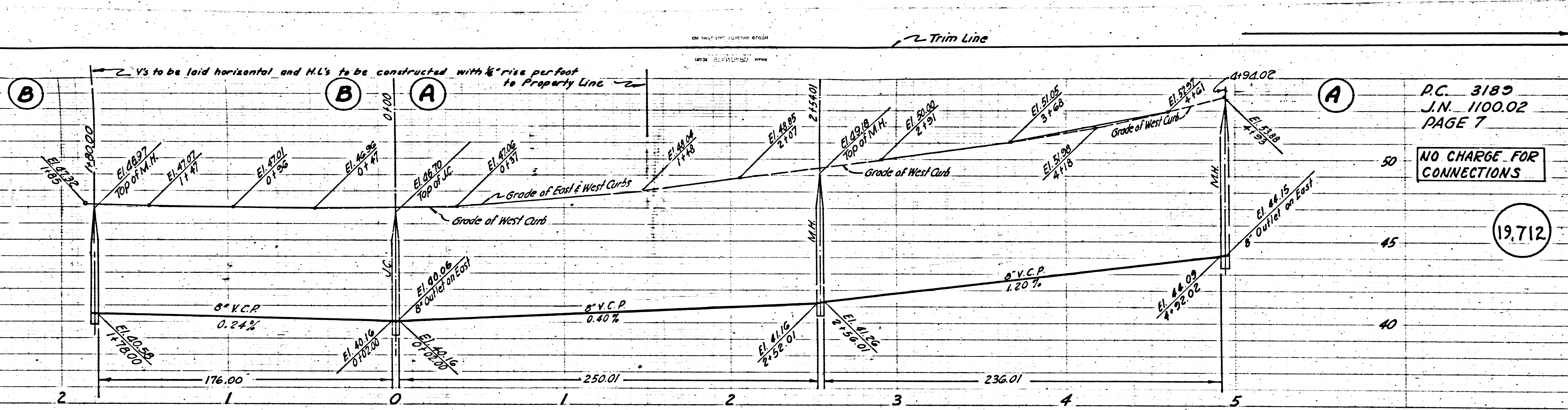
Page 2

Page 3

Page 4

Page 5

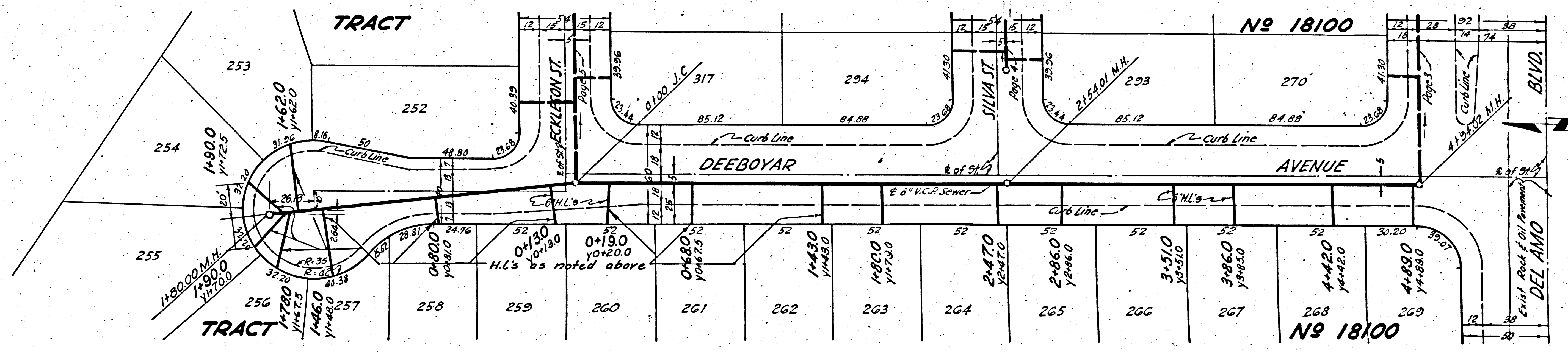
Rel.



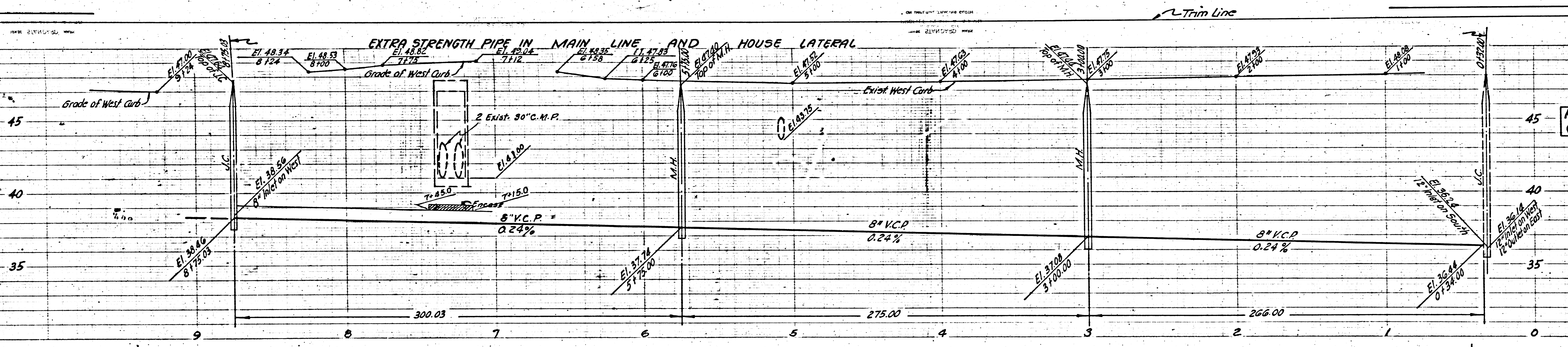
P.C. 3180
 J.N. 1100.02
 PAGE 7

NO CHARGE FOR CONNECTIONS

19,712



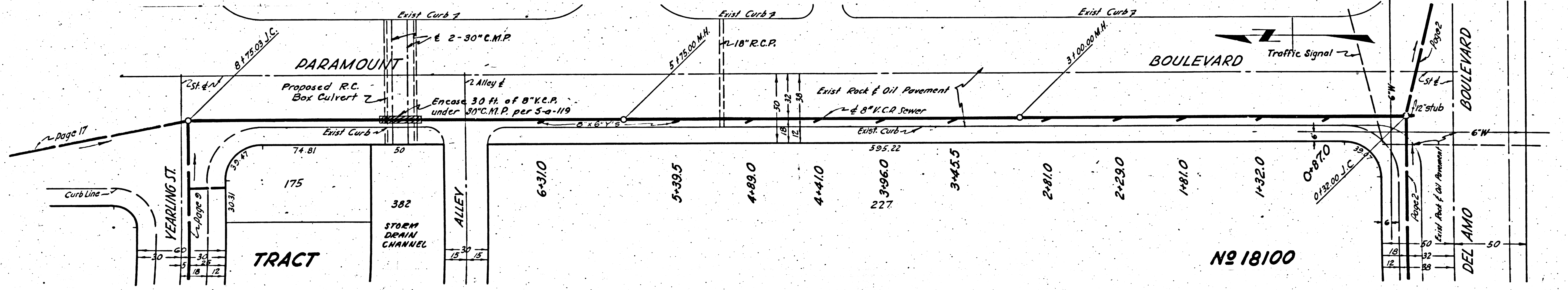
4



P.C. 3189
 J.A.I. 1100.02
 PAGE 8

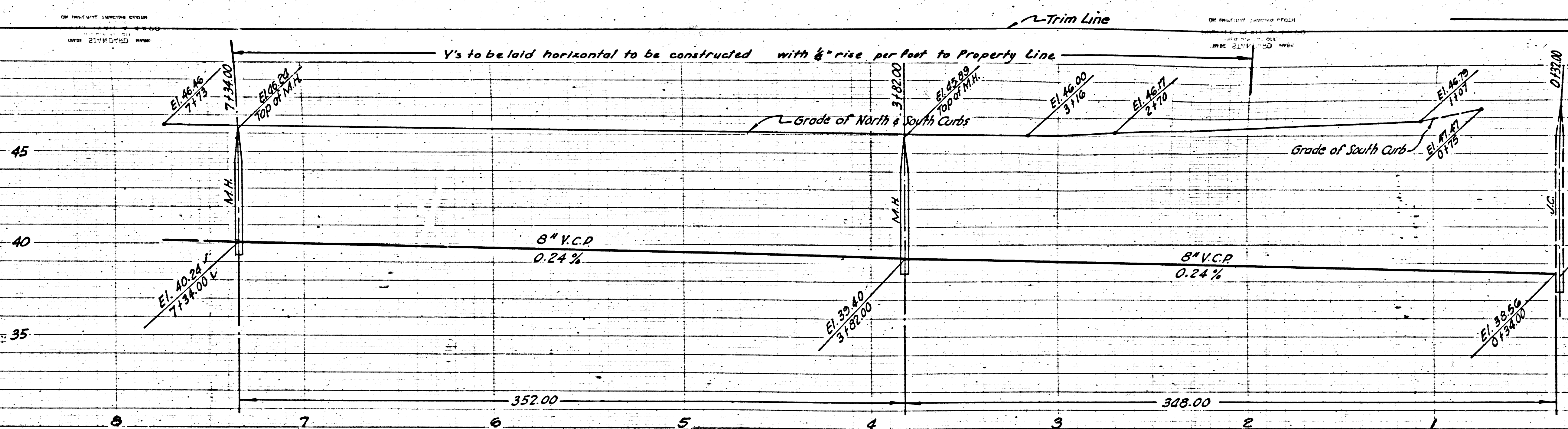
NO CHARGE FOR CONNECTIONS

19.713



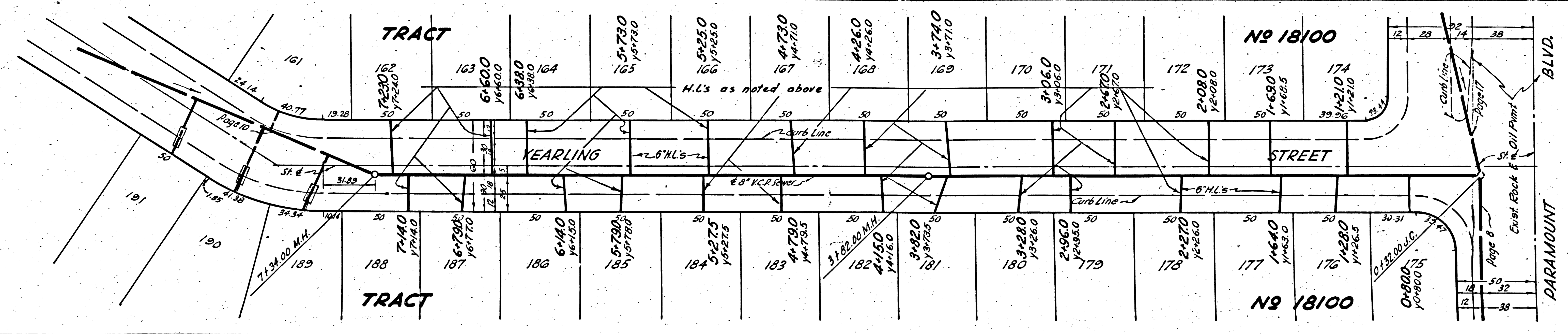
Nº 18100

Trim Line (3)

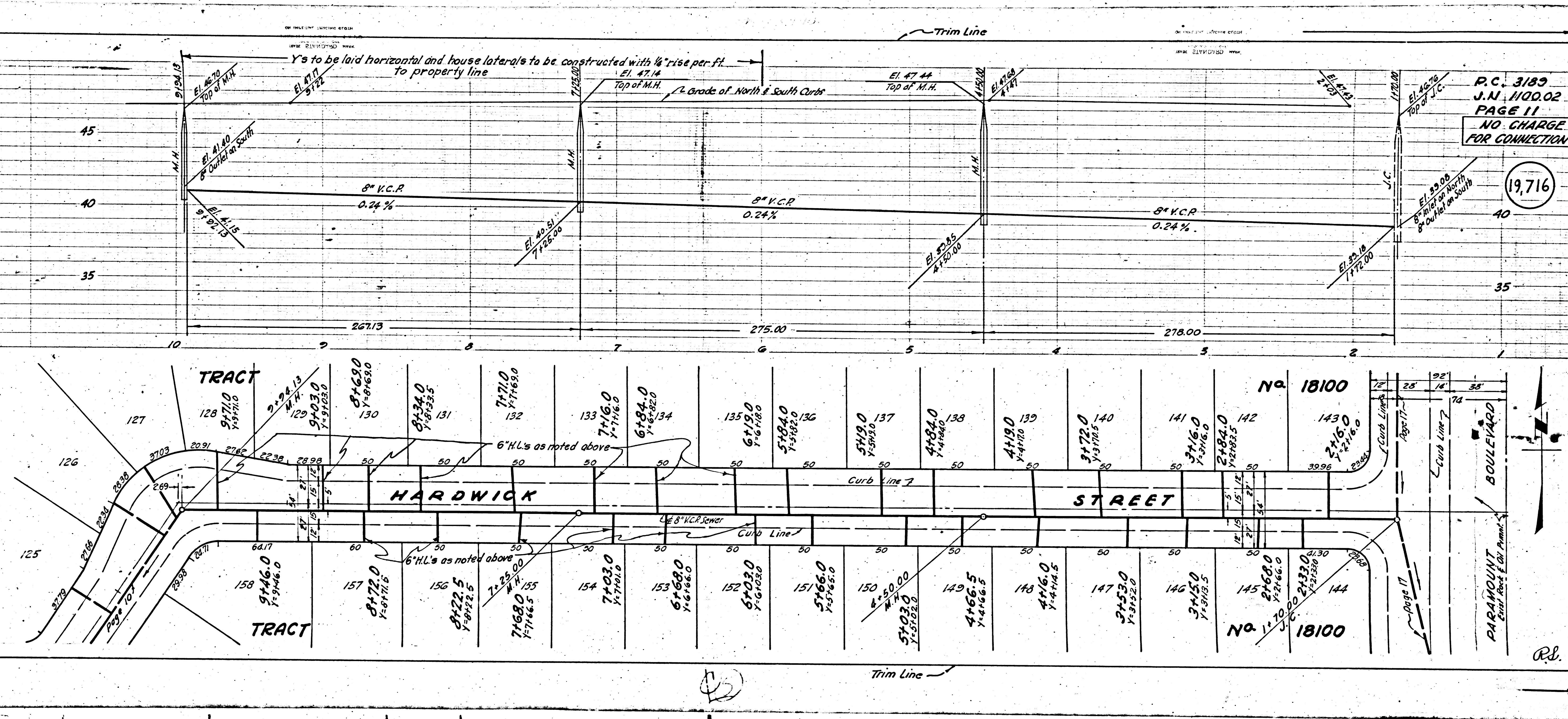


P.C. 3189
 J.N. 1100.02
 PAGE 9
 NO CHARGE FOR CONNECTIONS

19.714



Trim Line



P.C. 3189
 J.N. 1100.02
 PAGE 11
 NO CHARGE
 FOR CONNECTION

19,716

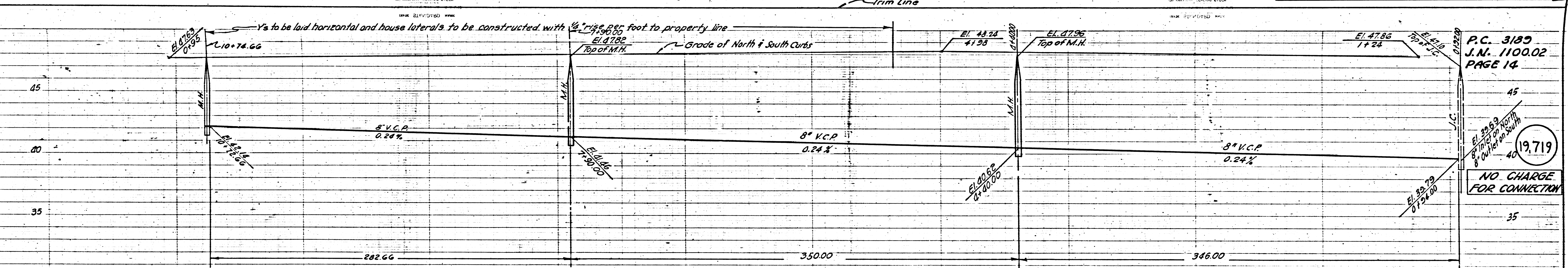
P.C. 3189
 J.N. 1100.02
 3

TRACT 18100

18100

R.S.

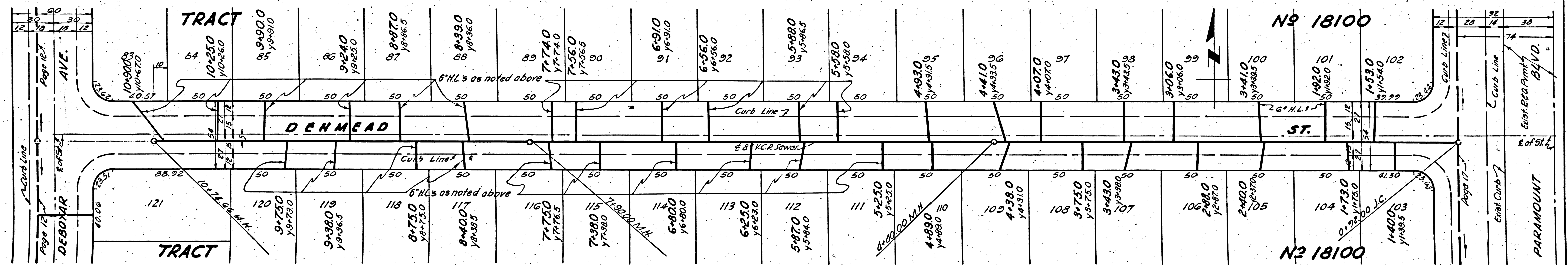
OK - FID



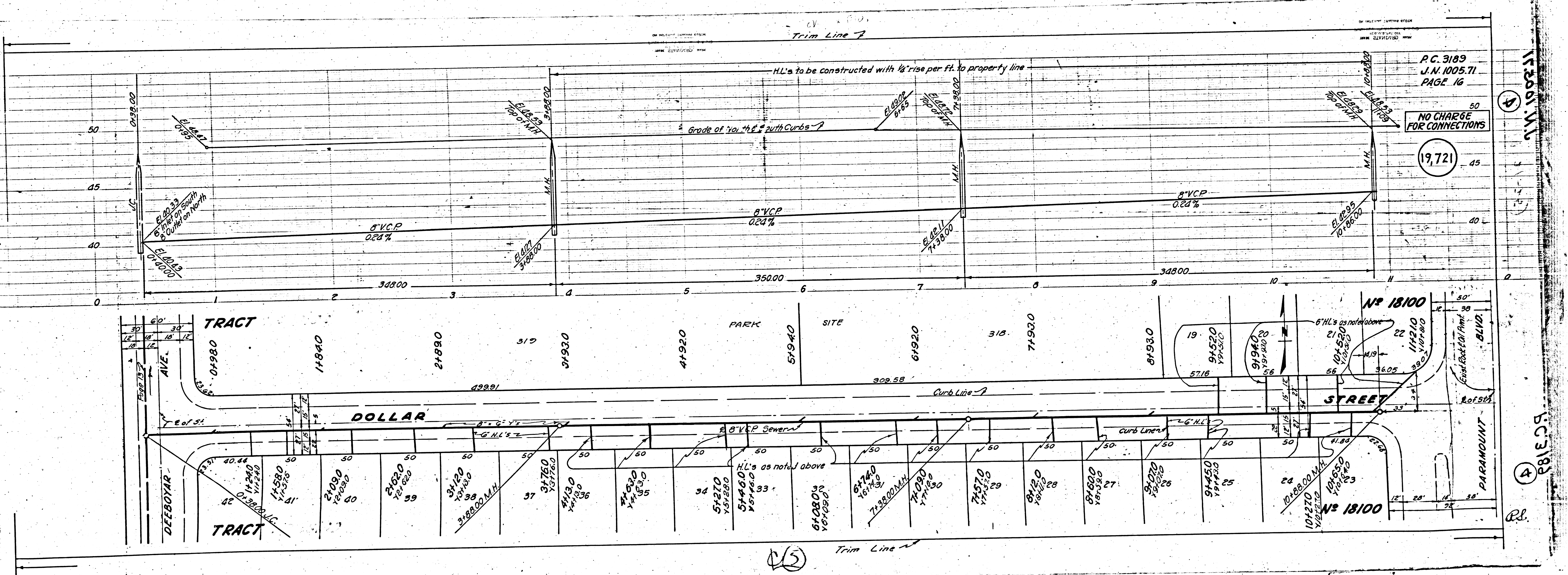
P.C. 3189
 J.N. 110002
 PAGE 14

19719

NO CHARGE
 FOR CONNECTION



Trim Line



P.C. 3189
 J.N. 1005.71
 PAGE 16

NO CHARGE
 FOR CONNECTIONS

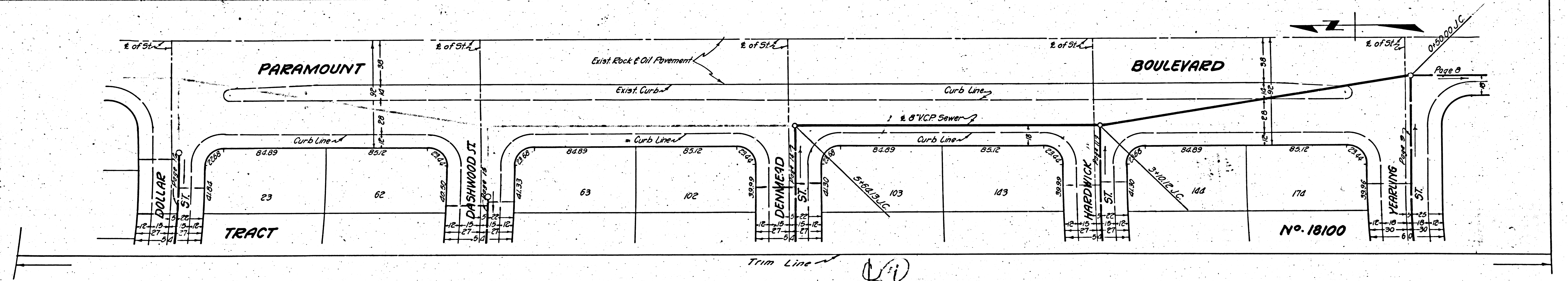
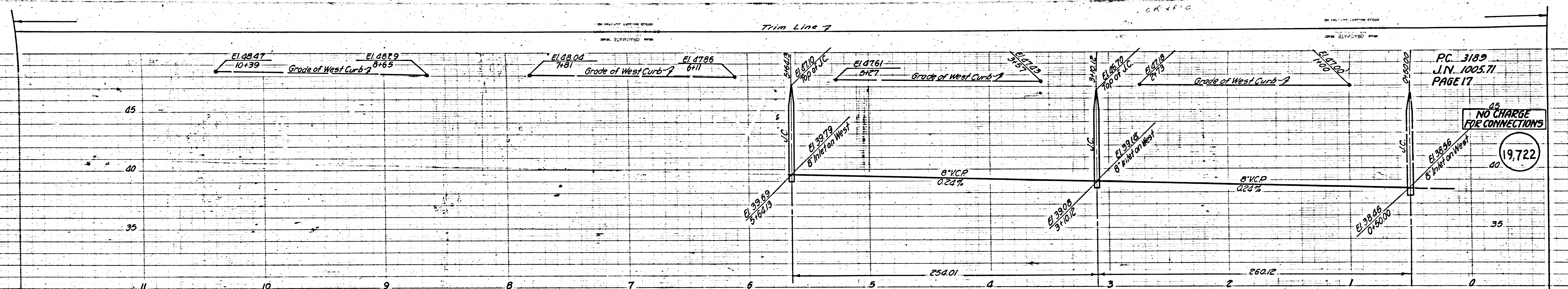
19,721

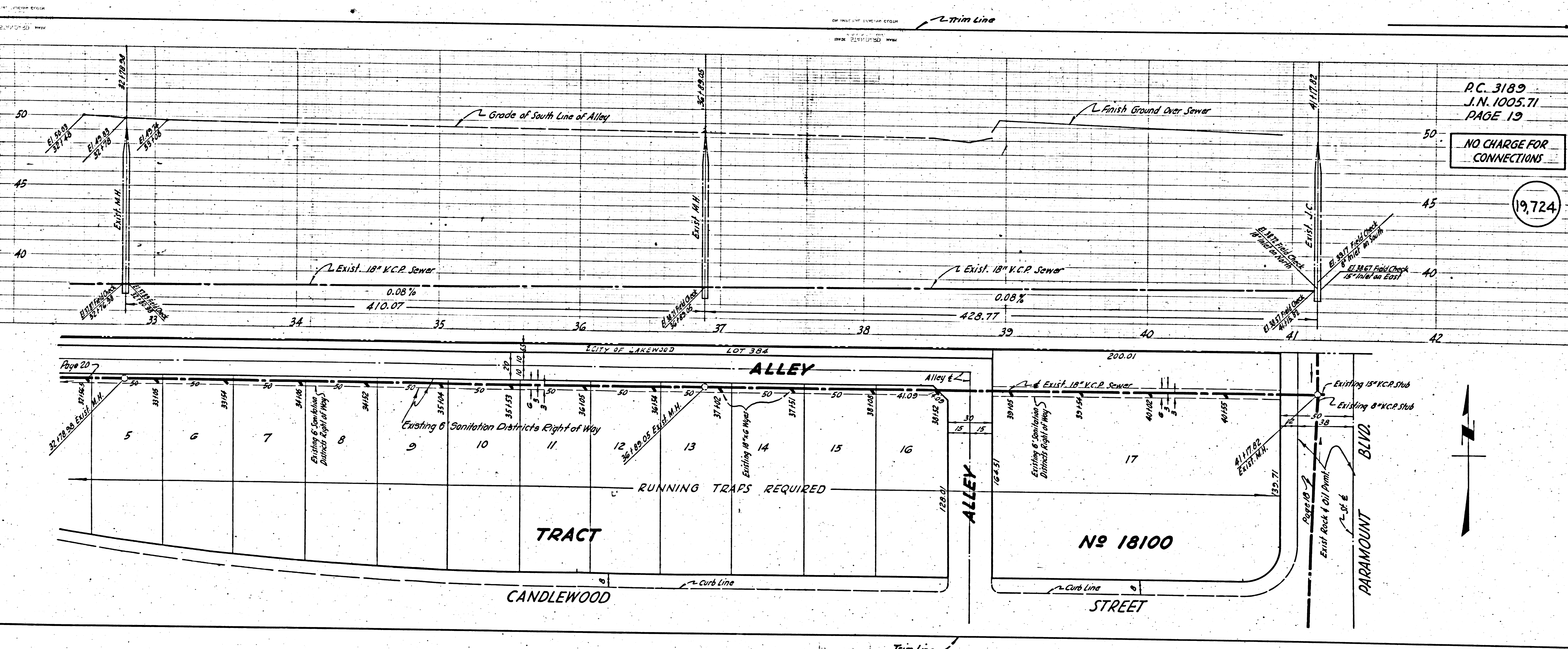
W. W. 1989.11

P.C. 3189

R.L.

(15)

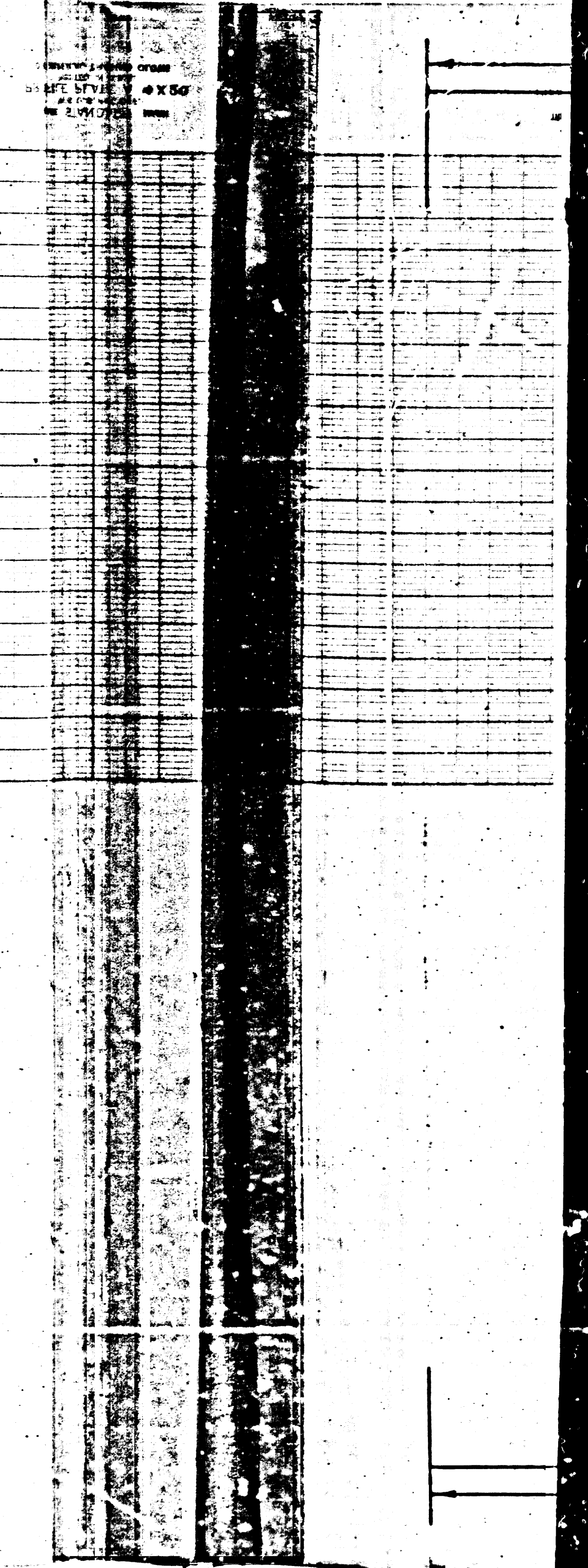
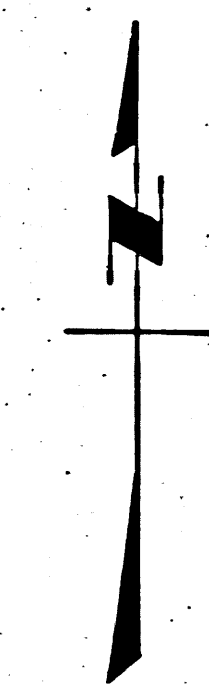


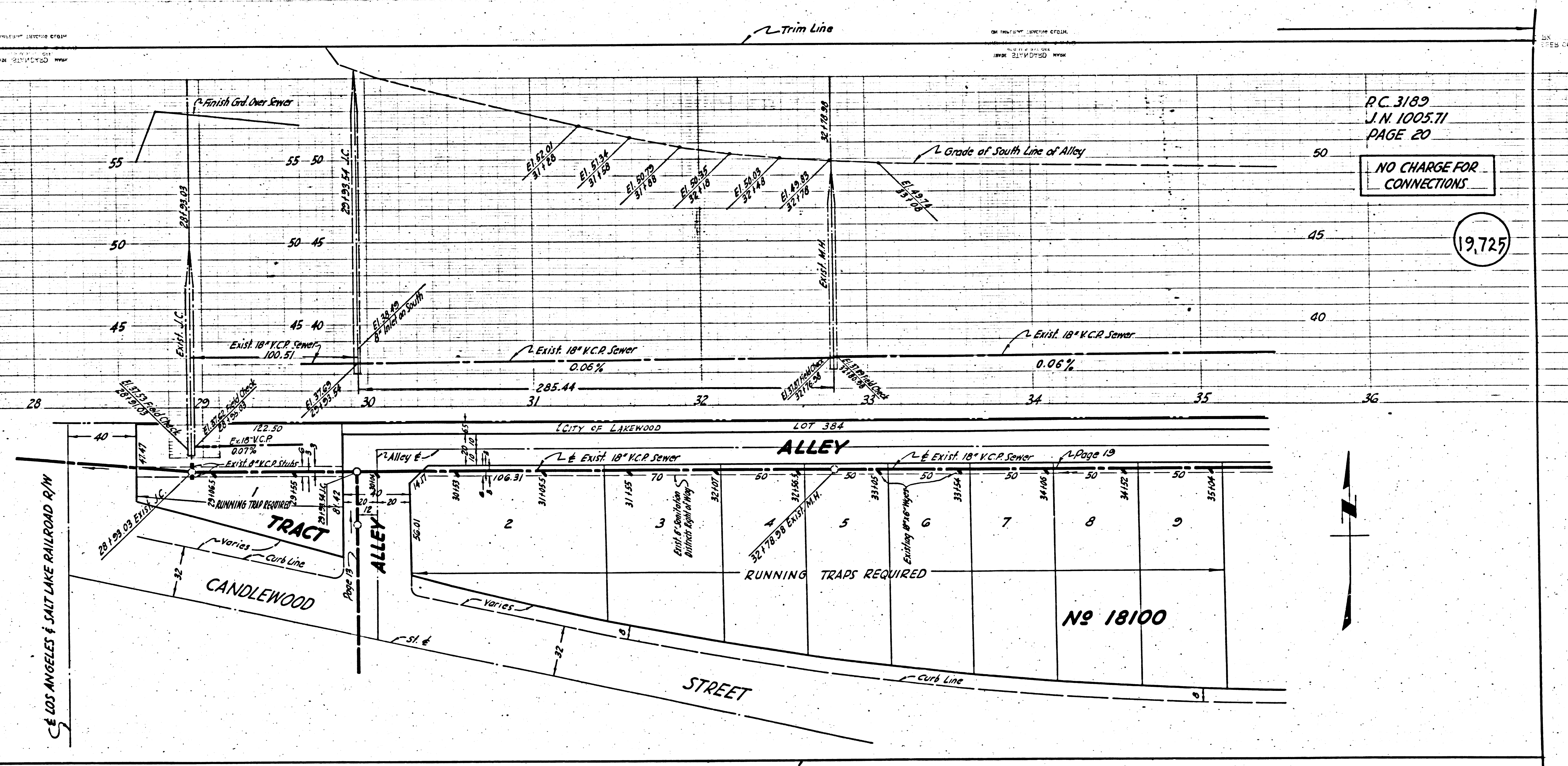


P.C. 3189
 J.N. 1005.71
 PAGE 13

NO CHARGE FOR CONNECTIONS

19,724





P.C. 3183
 J.N. 1005.71
 PAGE 20

NO CHARGE FOR CONNECTIONS

19,725

