

INDEX MAP
SCALE: 1"=600'
TRACT NO 20233
P.C. 3191 J.N. 1005.81

dated 1-5-55 K. L. ...

PUEENTE Bldg. Dist. No. 2

- NOTE:
Provide stakes on the property lines or property lines produced at right angles to the sewer line at the center line of each manhole.
No representative of the County Engineer will survey or layout any portion of the work. The owner or his authorized representative shall furnish the County Engineer with grade sheets and stations for all house laterals and Y branches and shall provide stakes for them at their proper locations with stationing plainly marked. Any change in location shall be requested in writing by the owner or his representative.
No revisions shall be made in these plans without the approval of the County Engineer.
1. Use standard manhole frames and covers, S-a-117.
 2. Use standard strength pipe except as noted.
 3. Use cement mortar for all vitrified clay pipe joints.
 4. Resurface all trench within paved area to meet L.A. County Road Dept. or Calif. State Highway Dept. requirements in accordance with permit.
 5. Encase four feet of sewer at points of interference with poles, S-a-119.
 6. House laterals to be constructed with inverts at property line.....6.....feet below curb grade except as noted.
 7. All structures shall be brick sewer structures, S-a-104.
 8. For allowable leakage test, use Formula No., Specs., Sec. 51.
 9. Manhole tops in unimproved Rights-of-Way to be 6" above finish grade.

SHEET NO	PAGES
1	1-5
2	6-7

CONNECTION CHARGES
AS INDICATED.
Rekhan 9-30-54

B.M. S.G. 1013. L.B.E.N. center of curb return at N.E. Corner of Amar Road & Glendora Ave. Elev. 328.423

PROFILE, ALIGNMENT AND GRADE OF
SANITARY SEWERS
TO BE CONSTRUCTED IN
TRACT NO 20233

P. C. 3191
J. N. 1100.02
PAGE 1

PRIVATE CONTRACT NO. 3191
W. S. 38

Scale: VERT. 1"=4'
HORIZ. 1"=40'
SEPT. 1954
PREPARED IN THE OFFICES OF
KARL TUTTLE ENGINEERING CO.
Shedd Johnson 9-30-54
Reg. C. E. No. 7668
FOR LEGEND SEE PLAN NO. S-a-64

NOTE:
Grades to which this improvement is to be constructed are shown on plans and profiles. Grade points for top of curbs, center line of streets, or center line of alleys are shown by circles on profiles. At all points between designated points the grade shall be established so as to conform to a straight line drawn between said designated points.
Elevations are in feet above U.S.G.S. datum or mean sea level.
This drawing and the data hereon are hereby made a part of the specifications.
Work shall be constructed according to specifications on file in the office of the County Engineer and shall be prosecuted only in the presence of the County Engineer.
Before work can be started, the contractor must obtain a permit to excavate in County streets from the L.A. County Road Dept., 108 W. 2nd St., and make a deposit with the County Engineer, 733 L.A. County Engineering Building, sufficient to cover the cost of construction inspection and record plans.
Approval of this plan by the County of Los Angeles does not constitute a representation as to the accuracy of the location of or the existence or non-existence of any underground utility, pipe, or structure within the limits of this project. This note applies to all sheets.
If work is to be done in a State Highway, a permit must be obtained from the State of California, Division of Highways, 120 South Spring Street.

COUNTY OF LOS ANGELES, CALIFORNIA
Approved, William J. Fox, County Engineer
A.P. Collins
Sanitation Engineer
Checked by: *Rekhan 9-30-54*
Office of County Engineer, Reg. C. E. No. 7840

Approved, A. M. Rawm
CHIEF ENGR. CO. SAN. DIST. NO. 15
A.M. Rawm
Office Engineer

19,529

TRACT NO 20233

RL

Trim Line
OG

PC. 3191
J.N. 1100.02
PAGE 3

NO CHARGE
FOR CONNECTIONS

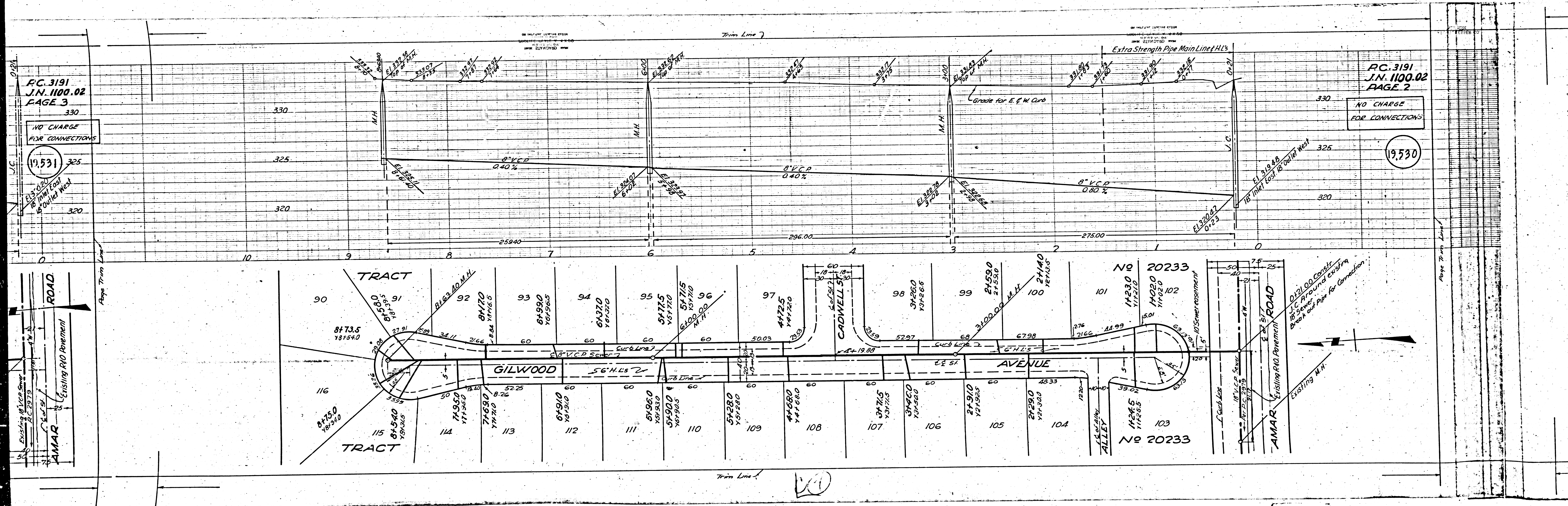
19,531

18" V.C.P. 10' FROM FOOT
OF CURVE WEST

PC. 3191
J.N. 1100.02
PAGE 2

NO CHARGE
FOR CONNECTIONS

19,530



PC. 3191
J.N. 1100.02
PAGE 4

CONNECTION CHARGES
AS INDICATED

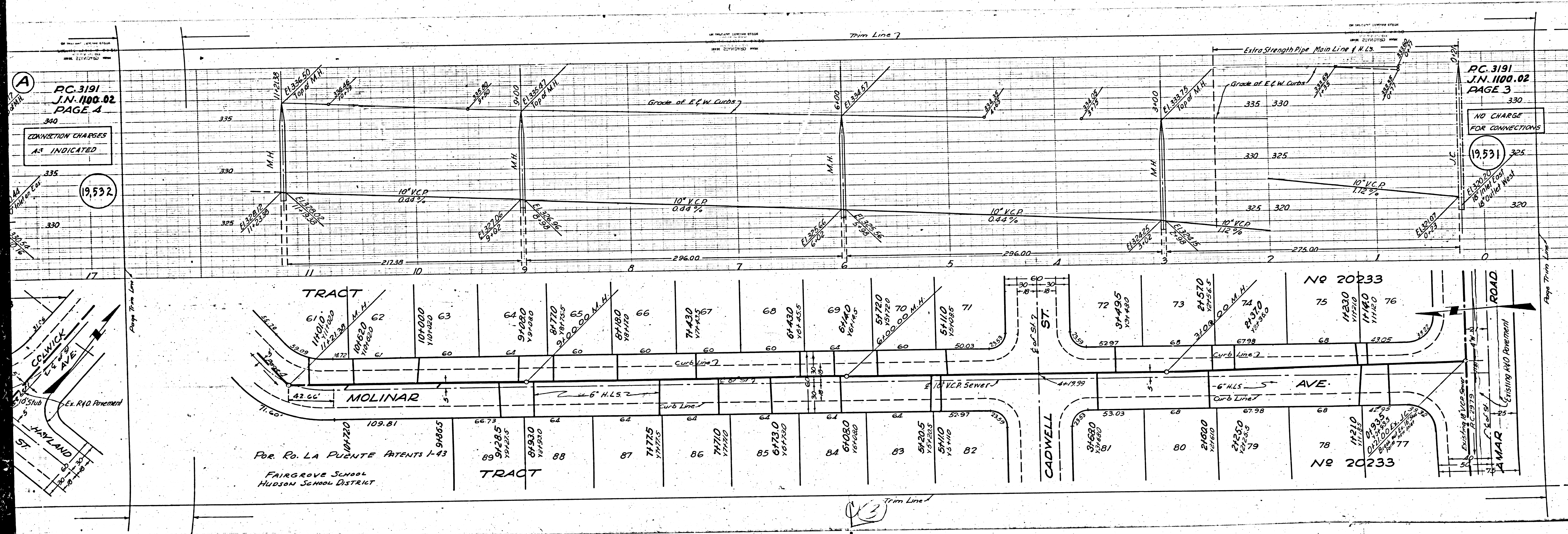
(19,532)

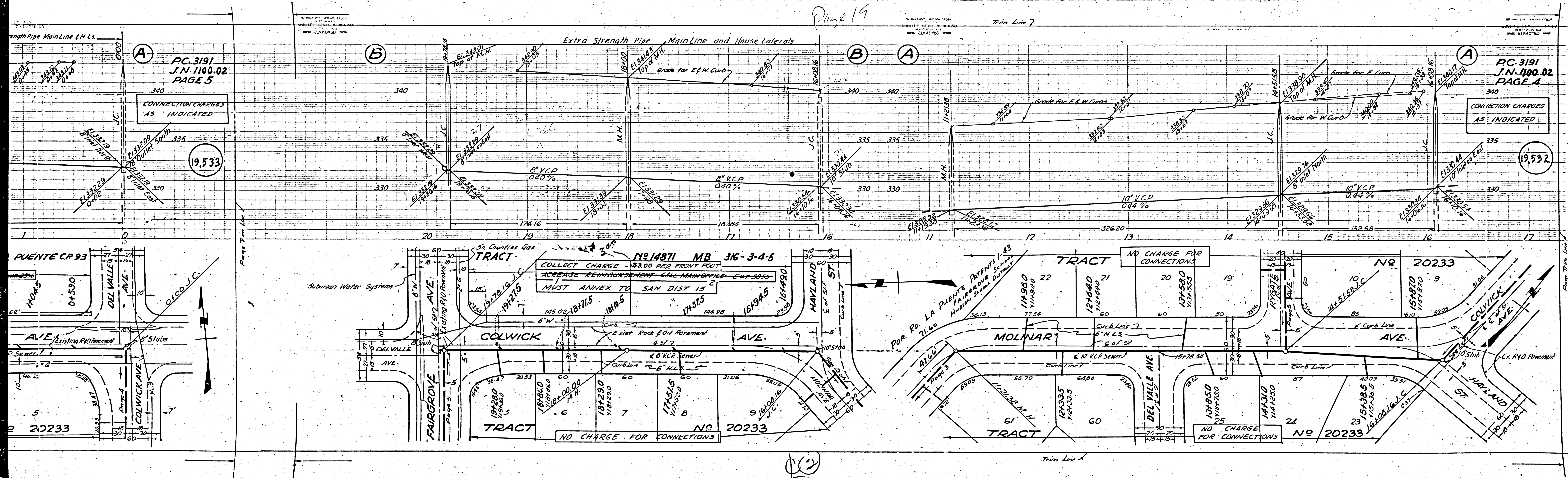
PC. 3191
J.N. 1100.02
PAGE 3

NO CHARGE
FOR CONNECTIONS

(19,531)

18" V.C.P. Sewer
15' Outer West





PC. 3191
J.N. 1100.02
PAGE 5

CONNECTION CHARGES
AS INDICATED

19,533

PC. 3191
J.N. 1100.02
PAGE 4

CONNECTION CHARGES
AS INDICATED

19,532

5a Counties Gas TRACT
NO 14871 MB 316-3-4-5
COLLECT CHARGE - \$3.00 PER FRONT FOOT
ACREAGE REIMBURSEMENT - CALL MAIN OFFICE - EXT. 3055
MUST ANNEX TO SAN DIST 15

NO CHARGE FOR CONNECTIONS

NO CHARGE FOR CONNECTIONS

NO CHARGE FOR CONNECTIONS

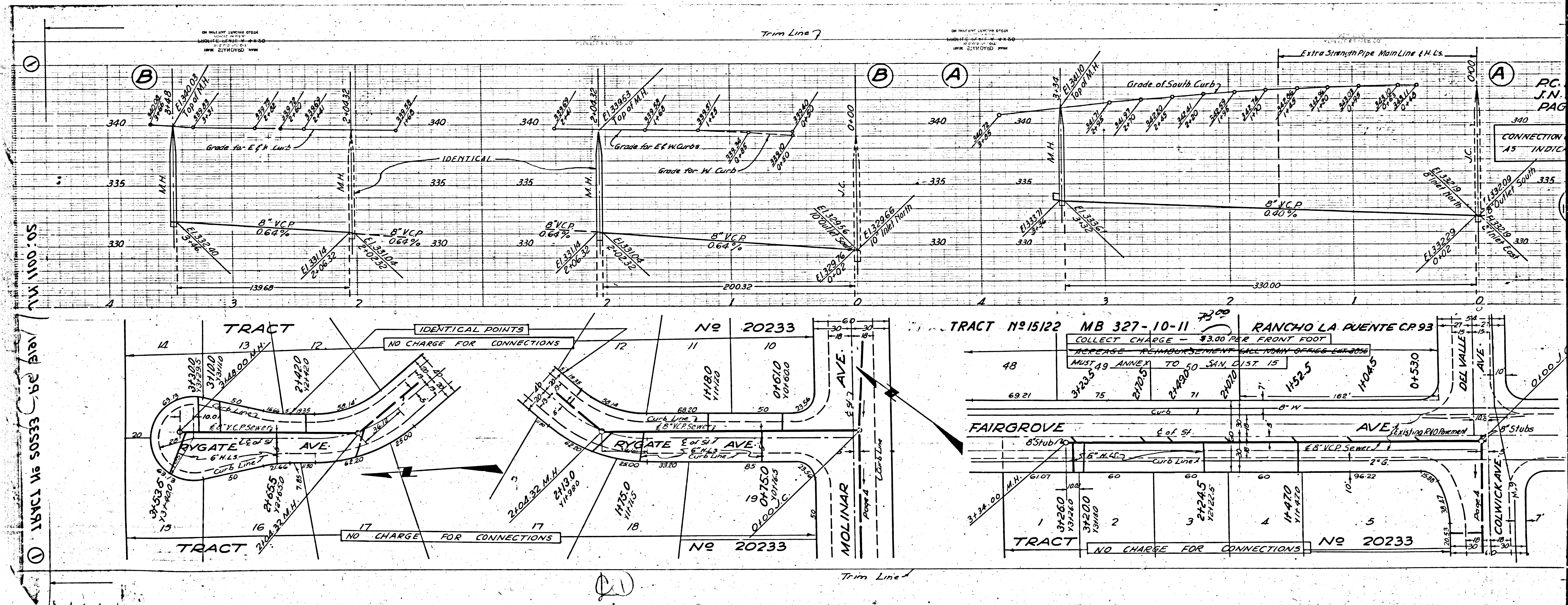
NO CHARGE FOR CONNECTIONS

102

Page 19

Trim Line 7

Trim Line 4



P.C. 3191
J.N. 1100.02
PAGE 7

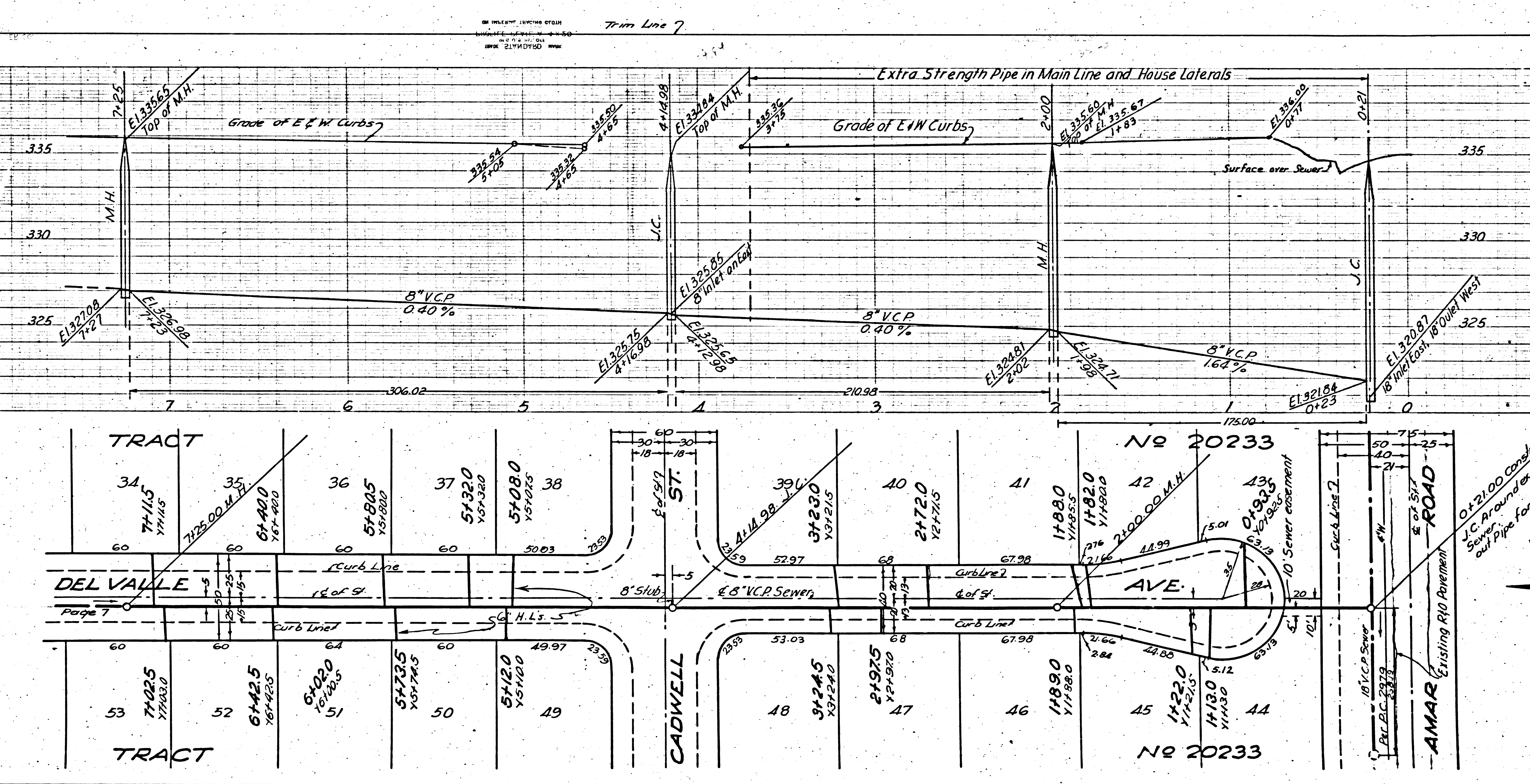
NO CHARGE
FOR CONNECTIONS

19,535

P.C. 3191
J.N. 1100.02
PAGE 6

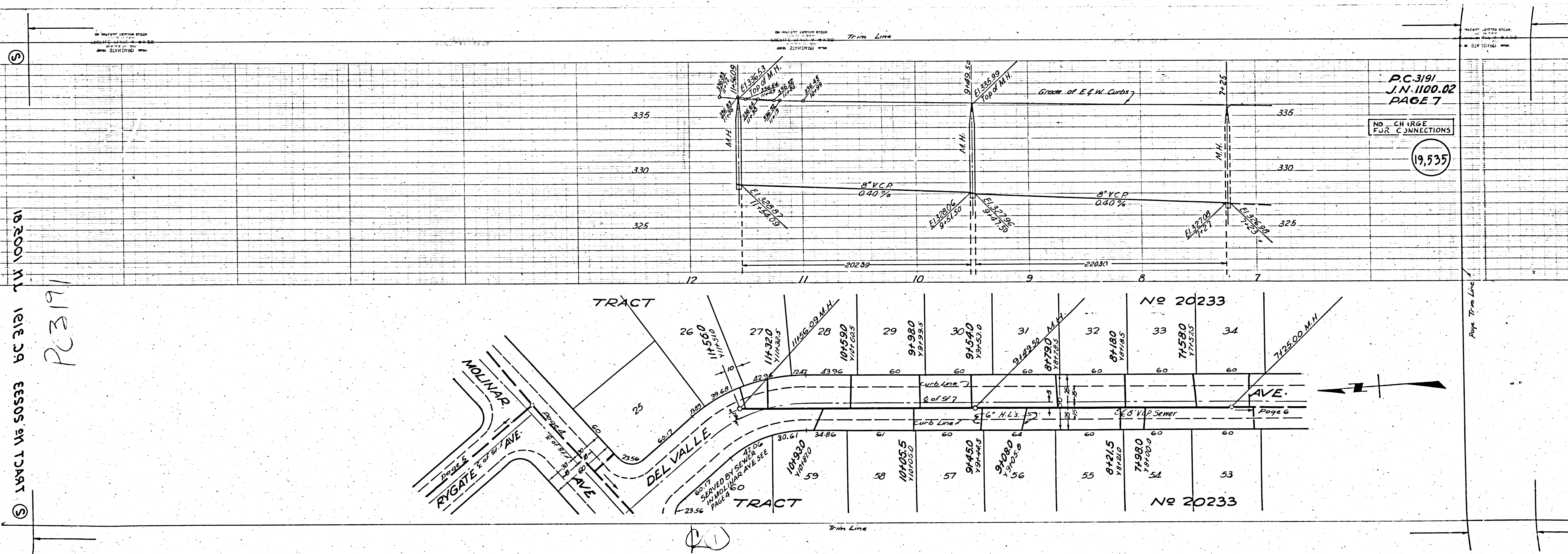
NO CHARGE
FOR CONNECTIONS

19,534



Rel.

PC 3191
J.N. 1100.02
PAGE 6



P.C. 3191
J.N. 1100.02
PAGE 7

NO CHARGE
FOR CONNECTIONS

19,535

TRACT N. 1/2 SEC. 29 T. 12 N. R. 10 E. S. 35

P.C. 3191

TRACT

No 20233

No 20233

MOLINAR AVE
RYGATE AVE
DEL VALLE AVE

AVE.

Trim Line

Page Trim Line

Page 6

Trim Line