

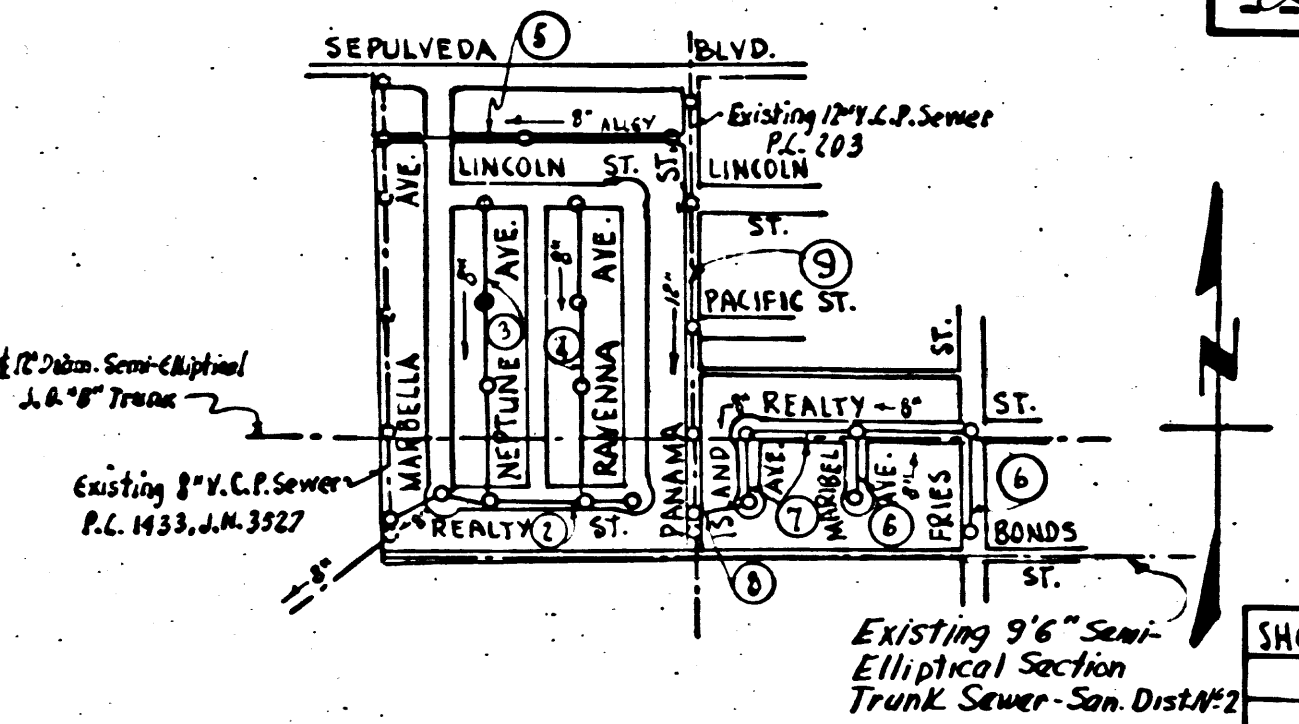
BENCH MARK: Lead and tack of 6
 intersection Lincoln and Marbella S.Y. 3297
 Vol. #6, p. 1571 Elev. 37721 (33)

LOMITA BUILDING DISTRICT No 7-L

NOTE:
 Provide stakes on the property lines or property lines produced at right angles to the sewer line at the center line of each manhole.
 No representative of the County Engineer will survey or layout any portion of the work.
 The owner or his authorized representative shall furnish the County Engineer with grade sheets and stations for all house laterals and Y branches and shall provide stakes for them at their proper locations with stationing plainly marked. Any change in location shall be requested in writing by the owner or his representative.
 No revisions shall be made in these plans without the approval of the County Engineer.

1. Use standard manhole frames and covers, S-a-117.
2. Use standard strength pipe except as noted.
3. Use cement mortar for all vitrified clay pipe joints.
4. Resurface all trench within paved area to meet L.A. County Road Dept. or California State Highway Dept. requirements in accordance with permit.
5. Encase four feet of sewer at points of interference with poles, S-a-119.
6. House laterals to be constructed with inverts at property line 6 feet below curb grade except as noted.
7. All structures shall be brick sewer structures, S-a-104.
8. For allowable leakage test, use Formula No. 1, Spec'n. Sec. 51.
9. Manhole tops in unimproved Rights-Of-Way to be 6" above finish grade.

**NO CHARGE
 FOR CONNECTIONS**
 L.A. Order 10-28-54



SPECIAL NOTE:
 Lots fronting on the West Side of MARBELLA AVE.
 are served from sewer in R/W at Rear, P.C. 1433, J.N. 3527

INDEX MAP
 SCALE: 1" = 600'
TRACT No 19109
 P.C. 3205 J.N. 100731

SHEET	PAGES
1	1-5
2	6-9

(NOTE: Figures in circles indicate Page No's)

checked 3-3-55 W. L. L...

PROFILE, ALIGNMENT AND GRADE OF
SANITARY SEWERS
 TO BE CONSTRUCTED IN

TRACT No 19109

PRIVATE CONTRACT NO. 3205
 W. S. 28
 2 SHEETS

Scale: VERT. 1" = 4'
 HORIZ. 1" = 40' AUGUST 1954

PREPARED IN THE OFFICES OF
GORDON J. JENNINGS CO.

G. J. Jennings
 Reg. C. E. No. 7858
 FOR LEGEND SEE PLAN NO. S-a-64

NOTE:
 Grades to which this improvement is to be constructed are shown on plans and profiles. Grade points for top of curbs, center line of streets, or center line of alleys are shown by circles on profiles. At all points between designated points the grade shall be established so as to conform to a straight line drawn between said designated points.
 Elevations are in feet above U.S.G.S. datum or mean sea level.
 This drawing and the data hereon are hereby made a part of the specifications.
 Work shall be constructed according to specifications on file in the office of the County Engineer and shall be prosecuted only in the presence of the County Engineer.
 Before work can be started, the contractor must obtain a permit to excavate in County streets from the L.A. County Road Dept., 108 W. 2nd St. and make a deposit with the County Engineer, 733 L.A. County Engineering Building, sufficient to cover the cost of construction inspecting and record plans.
 Approval of this plan by the County of Los Angeles does not constitute a representation as to the accuracy of the location or the existence or non-existence of any underground utility, pipe, or structure within the limits of this project. This note applies to all sheets.
 If work is to be done in a State Highway, a permit must be obtained from the State of California, Division of Highways, 120 South Spring Street.

COUNTY OF LOS ANGELES, CALIFORNIA
 Approved, William J. Fox, County Engineer
 Approved, A. M. Rawm
 CHIEF ENGR. CO. SAN. DIST. NO. 8
 G. J. Jennings
 ENGINEER
 Office Engineer
 Checked by: P. P. ... 10-28-54
 Office of County Engineer, Reg. C. E. No. 7860.

P.C. 3205
 J.N. 100731
 PAGE 1 of 2

(19,858)

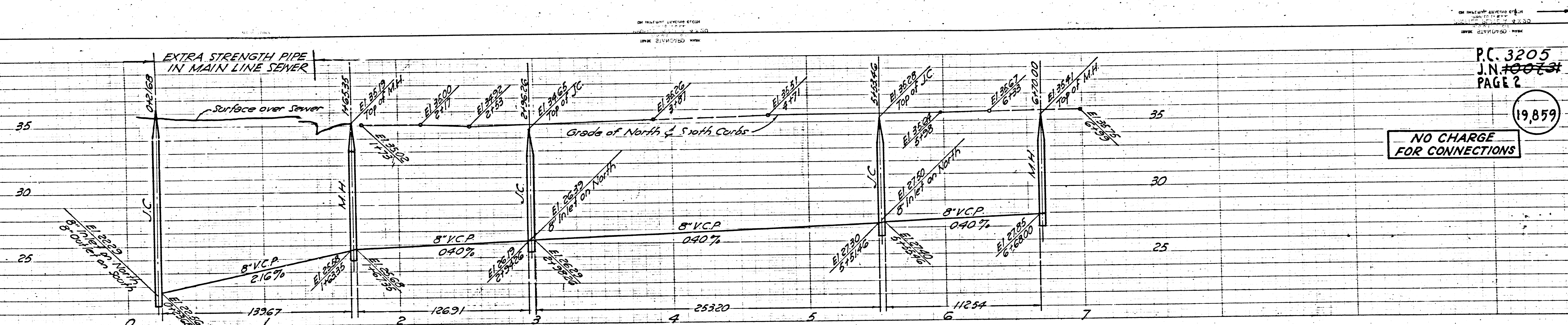
TRACT No 19109

S-a-28-sine9

1 P.C. 3205

Rel.

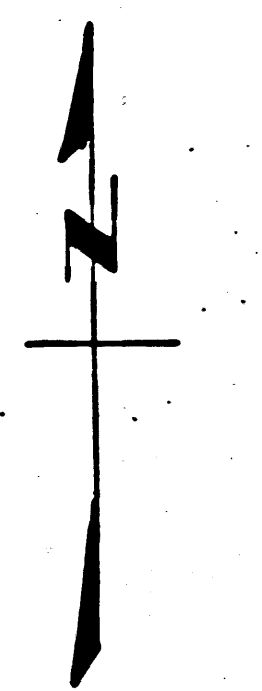
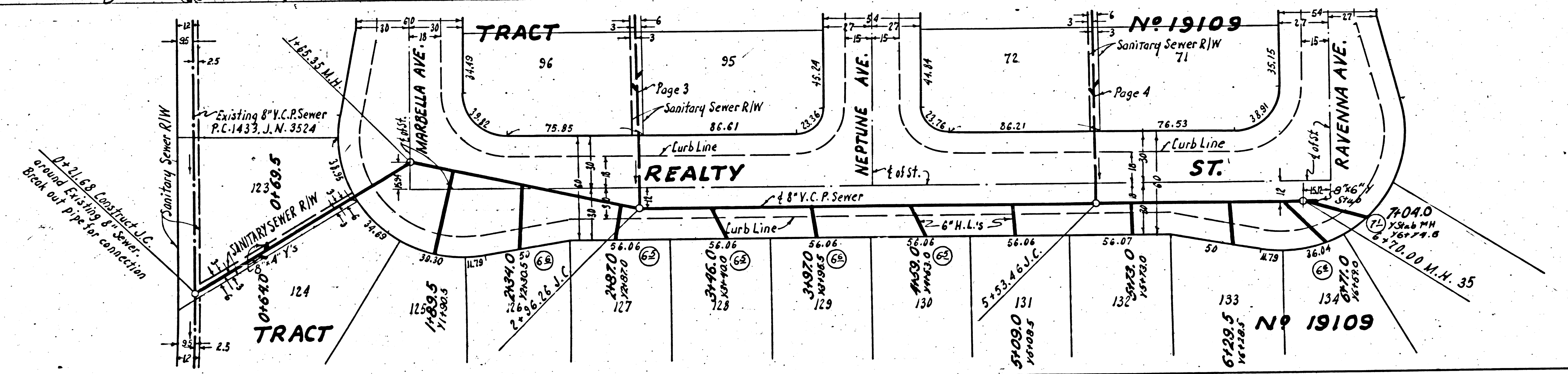
205
99734
3
9.860



P.C. 3205
J.N. #00734
PAGE 2

19,859

NO CHARGE FOR CONNECTIONS

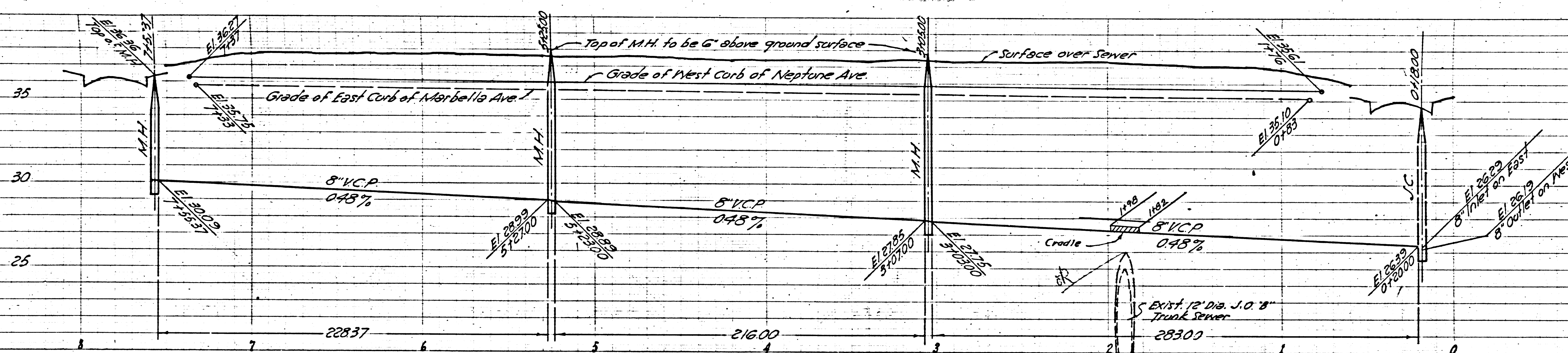


(24)

P.C. 3205
J.N. #00734
PAGE 4

(19,861)

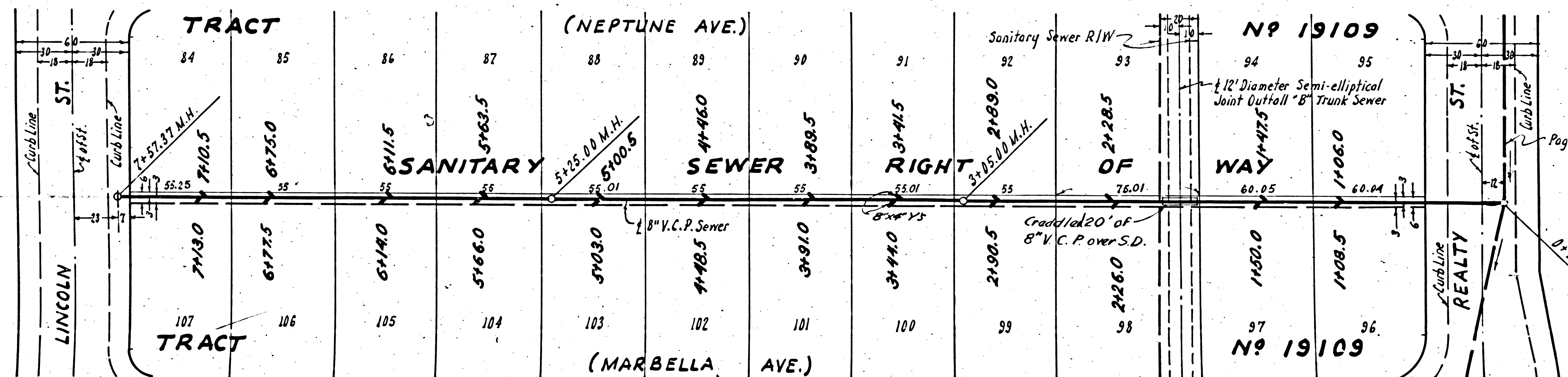
NO CHARGE FOR CONNECTIONS



P.C. 3205
J.N. #00734
PAGE 3

(19,860)

NO CHARGE FOR CONNECTIONS

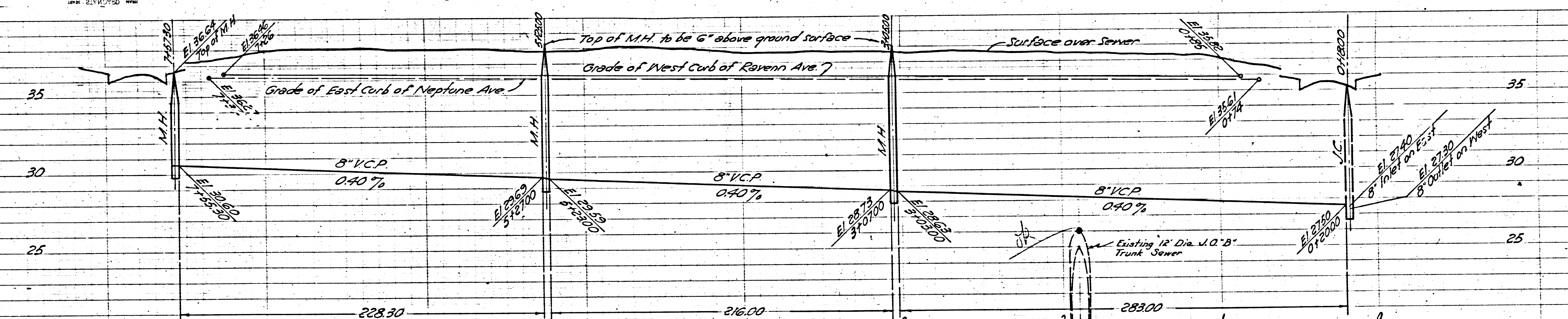


(13)

P.C. 3205
J.N. #00734
PAGE 5

19,862

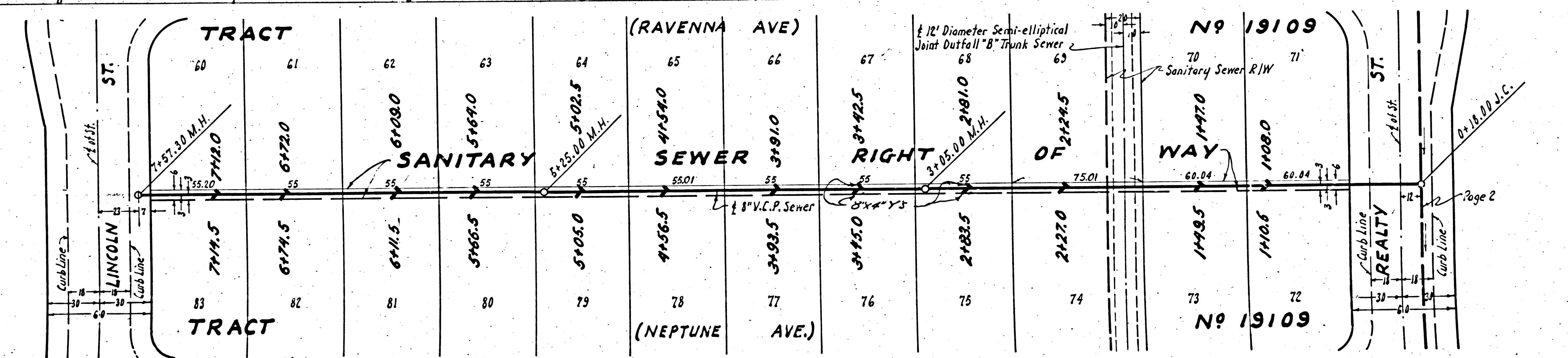
NO CHARGE
FOR CONNECTIONS



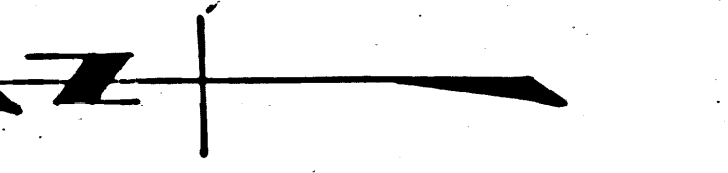
P.C. 3205
J.N. #00734
PAGE 4

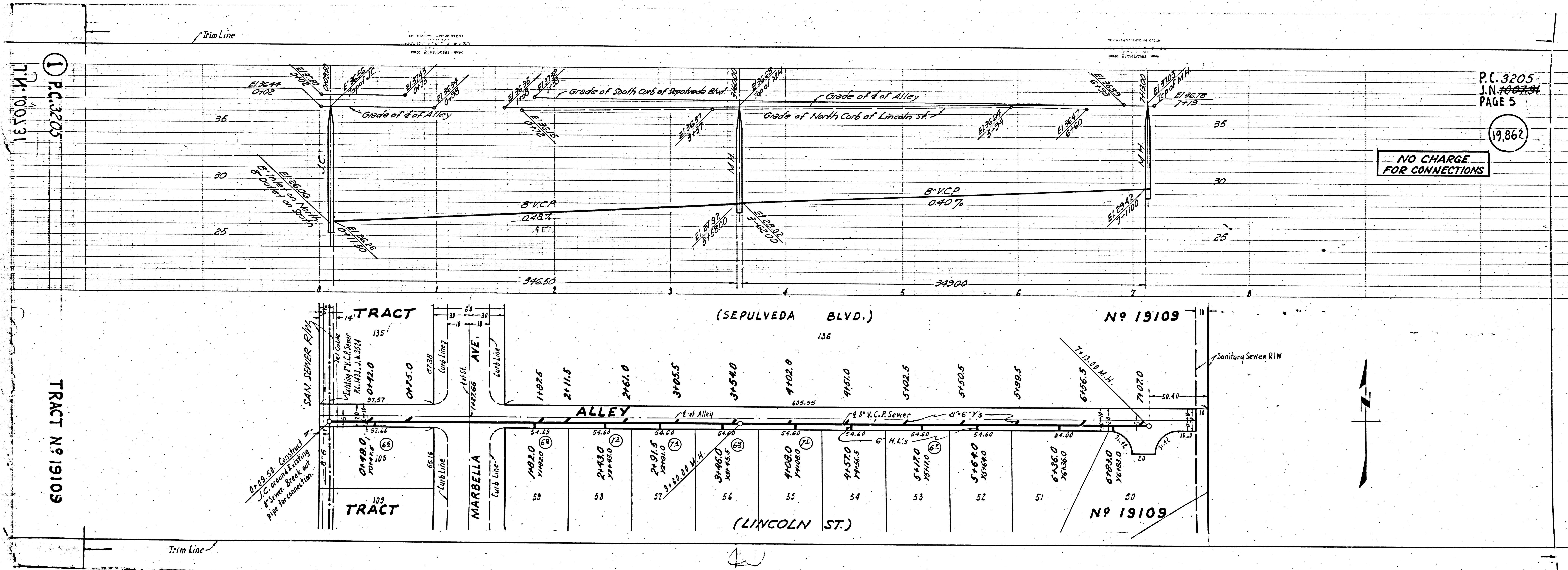
19,861

NO CHARGE
FOR CONNECTIONS



Page 2





① P.C. 3205
 111-100131

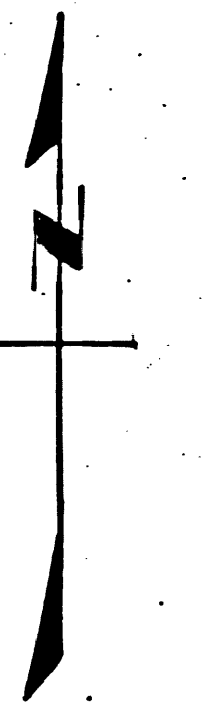
P.C. 3205
 J.N. 100731
 PAGE 5

19,862

NO CHARGE FOR CONNECTIONS

TRACT N° 19109

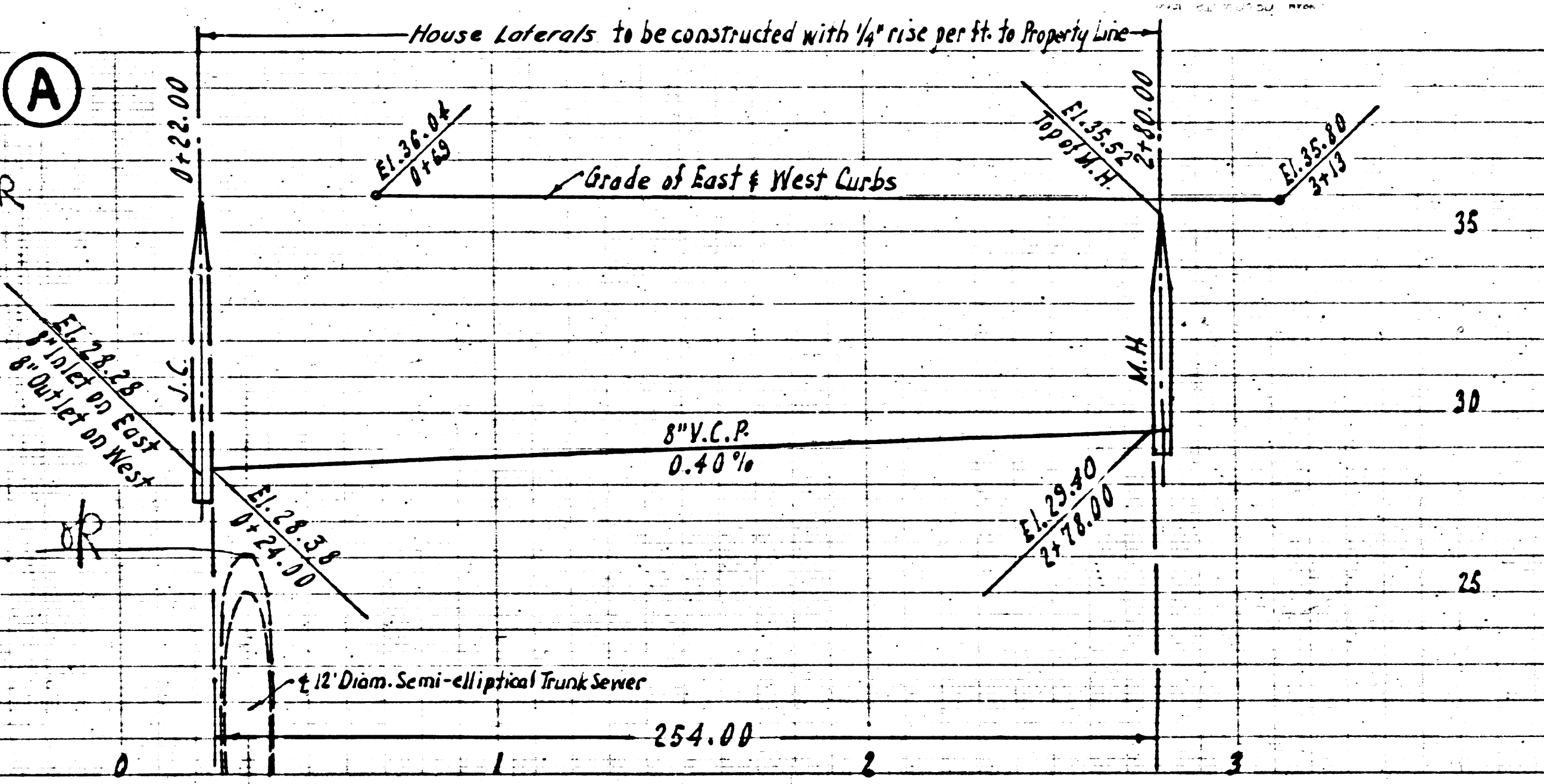
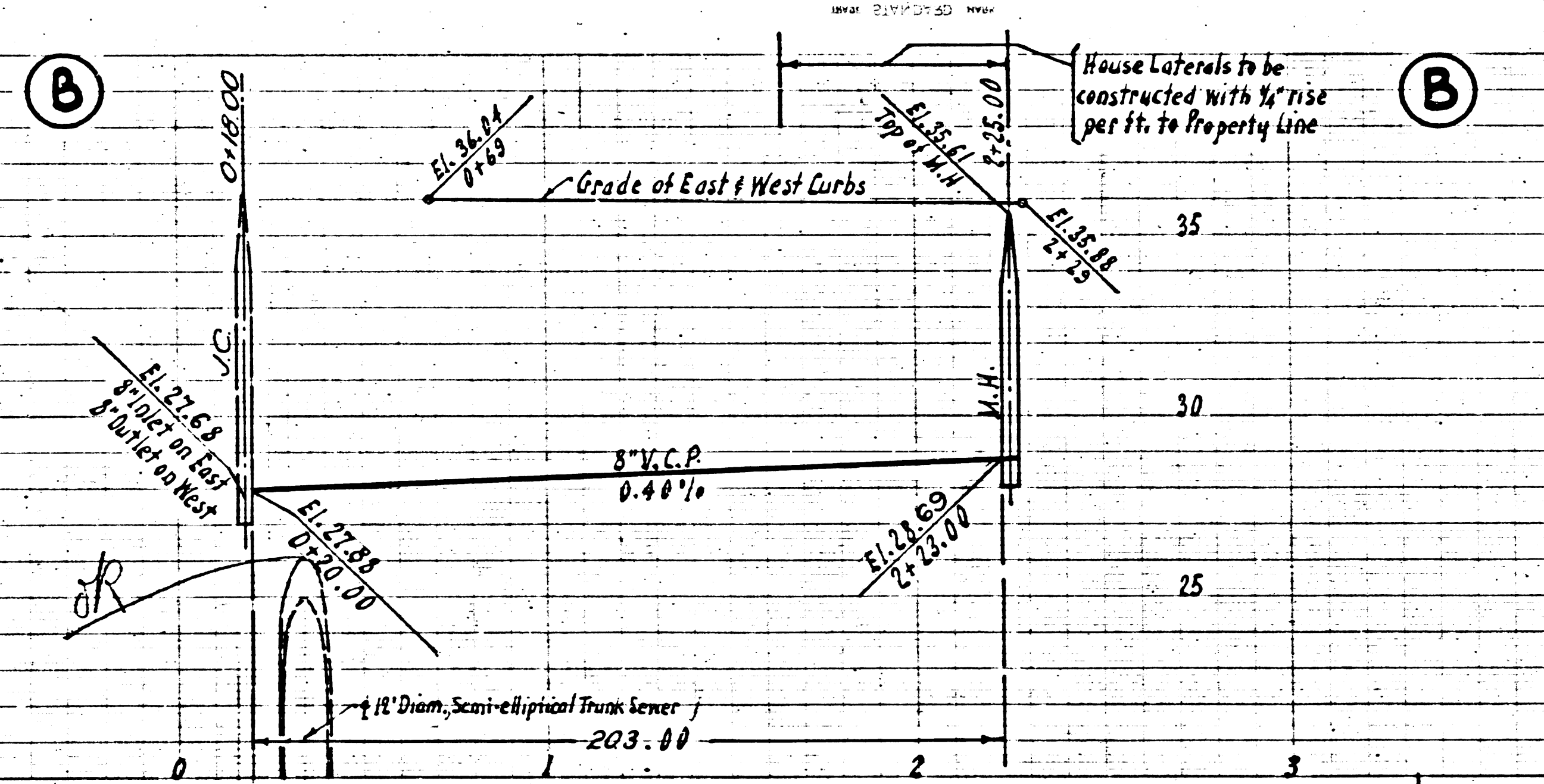
TRACT (SEPUVEDA BLVD.) N° 19109
 ALLEY
 MARGELLA AVE.
 TRACT 109
 (LINCOLN ST.) N° 19109



P.C. 3205
J.N. 19863
PAGE 7

19,864

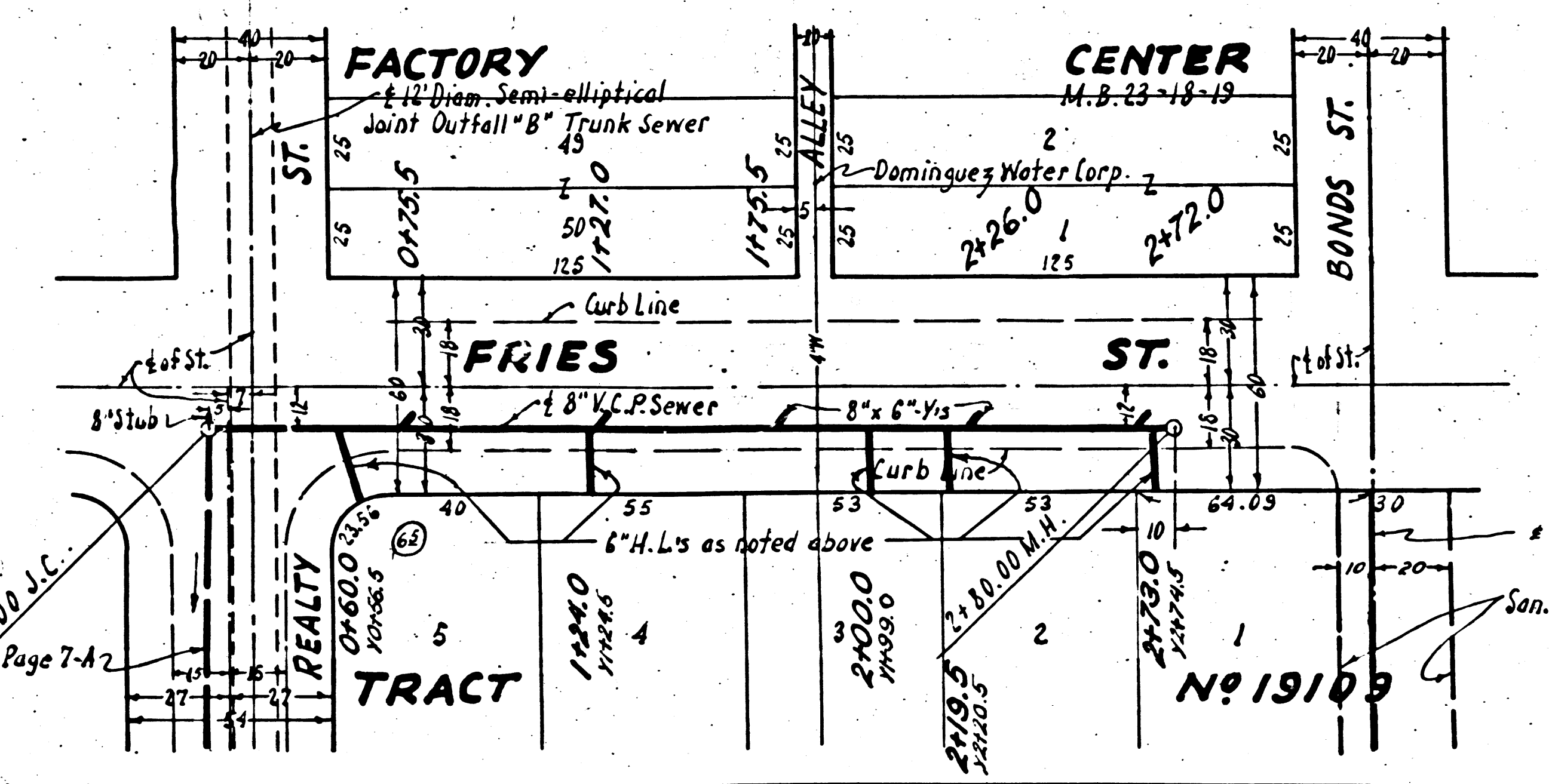
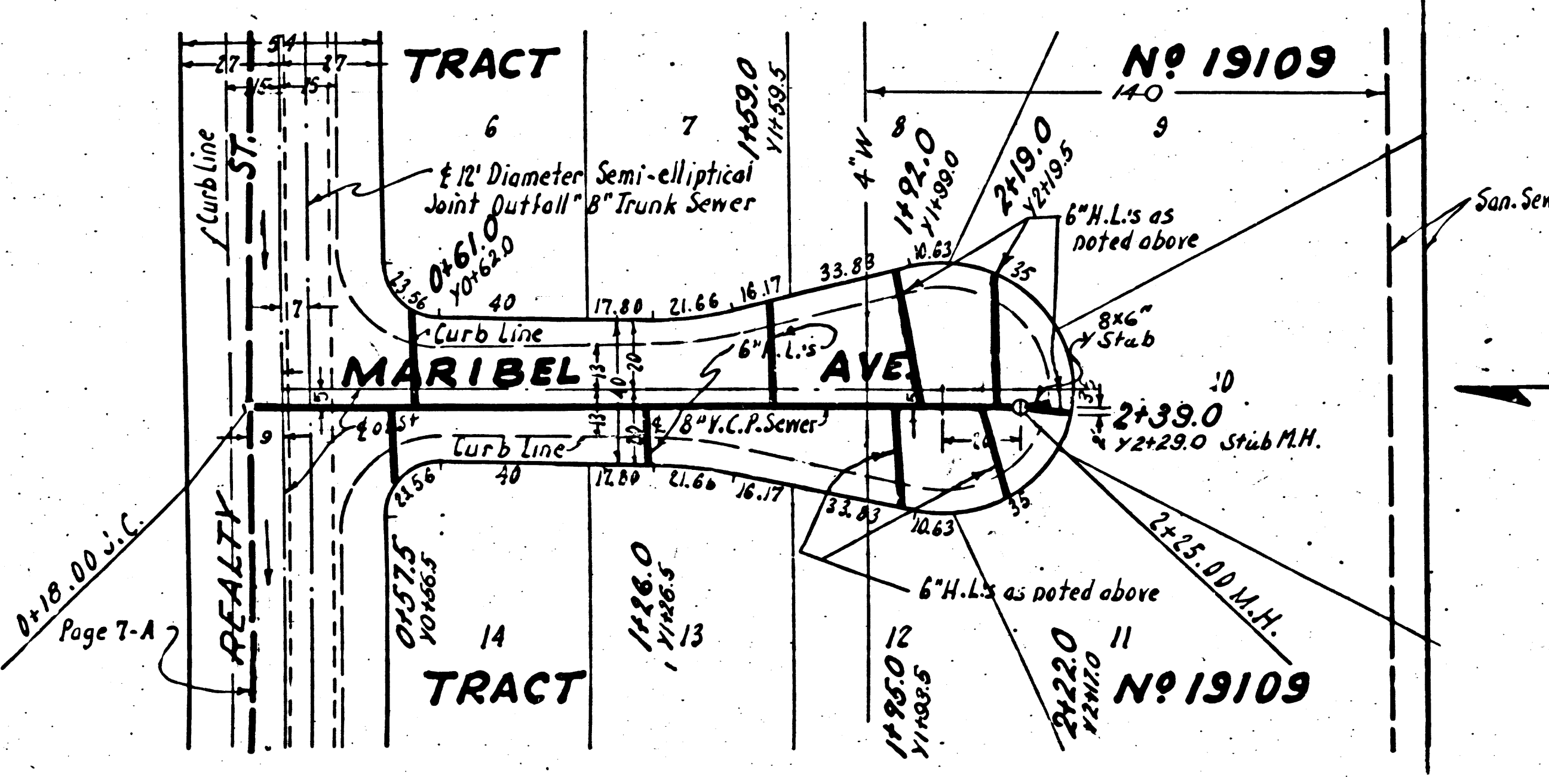
NO CHARGE FOR CONNECTIONS



P.C. 3205
J.N. 19863
PAGE 6

19,863

NO CHARGE FOR CONNECTIONS



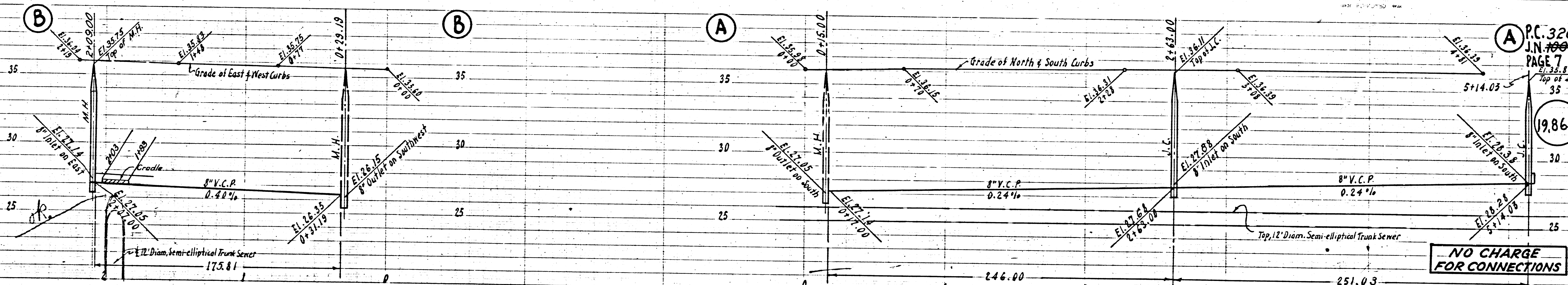
Rd.

TRACT NO. 19109

PC 3205
J.N. 19873
PAGE 8

NO CHARGE
FOR CONNECTIONS

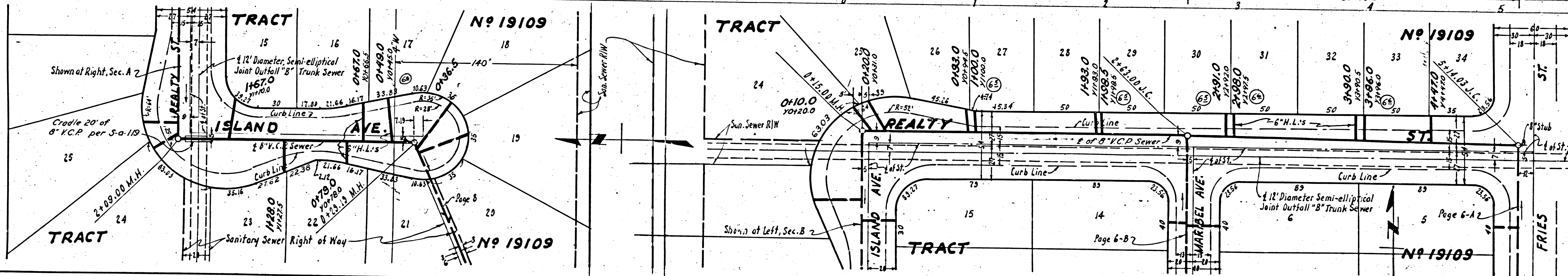
19,865



NO CHARGE
FOR CONNECTIONS

PC 3205
J.N. 19873
PAGE 7

19,864



TRACT

TRACT

TRACT

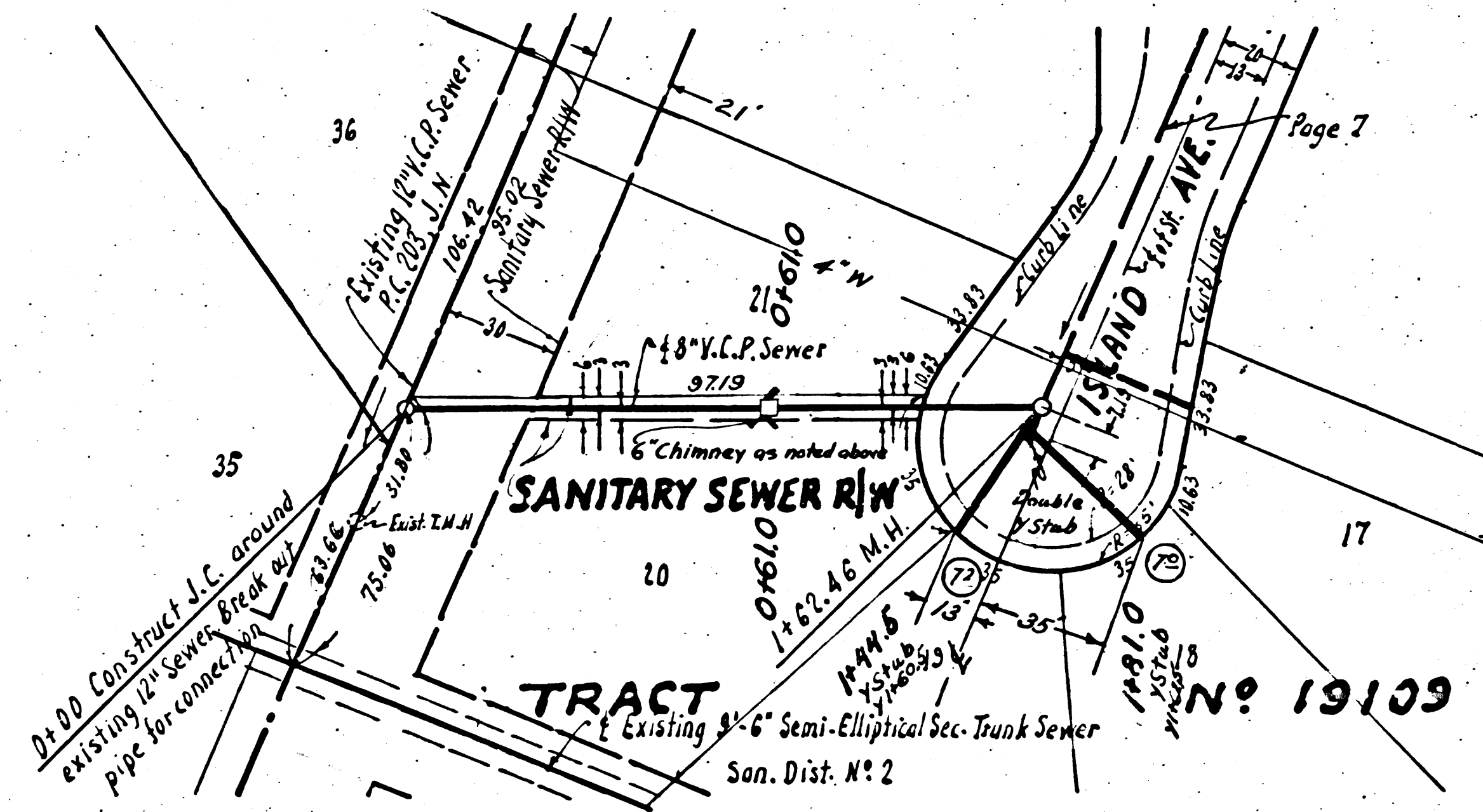
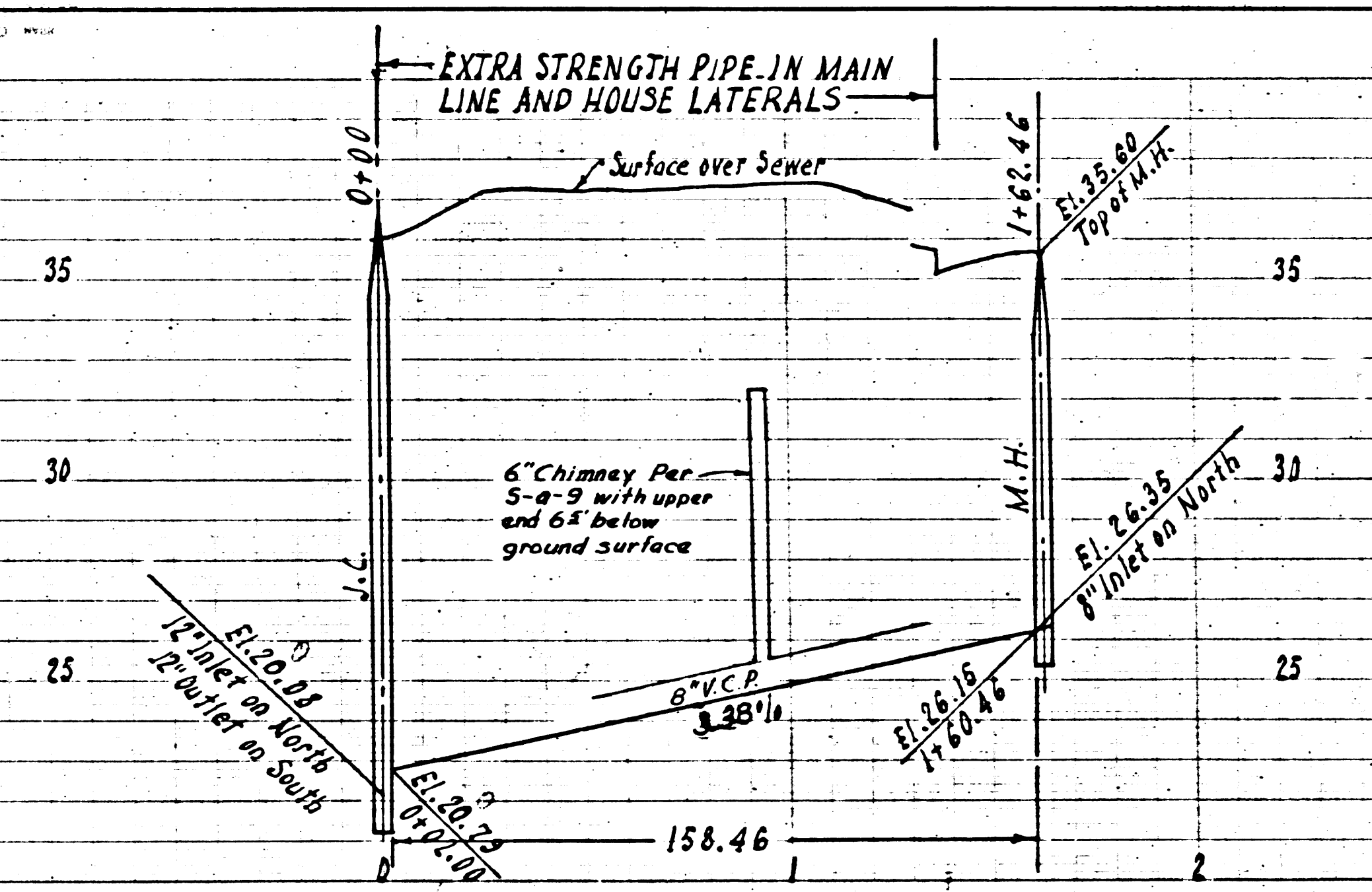
TRACT

Trim Line

P.C. 3205
J.N. 1907-31
PAGE 8

NO CHARGE
FOR CONNECTIONS

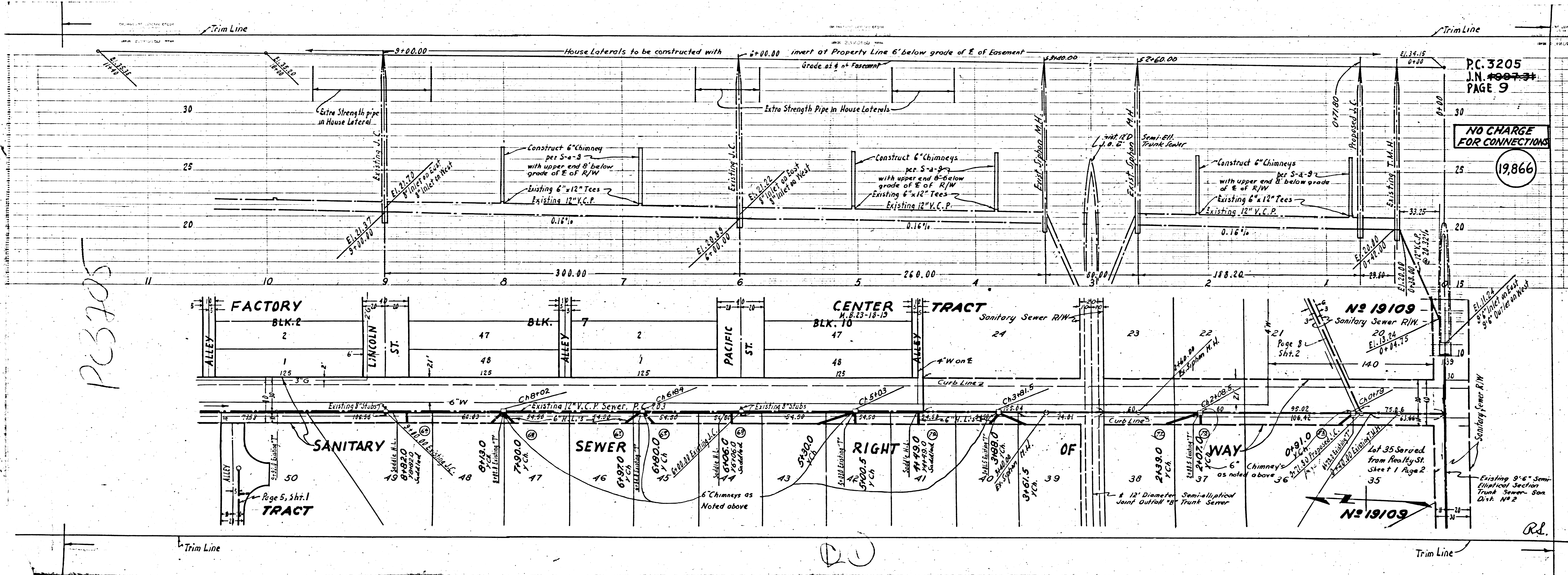
19865



Trim Line

22

PC3705



PC 3205
I.N. 1907-31
PAGE 9

NO CHARGE
FOR CONNECTIONS
19,866

Nº 19109
Sanitary Sewer R/W

Nº 19109
Sanitary Sewer R/W

Rd.