

P.C. 3206  
J.N. 1007.41  
PAGE 2

CHARGE CONNECTIONS

20,503

BE PRESENCE DISTRICT

DETAIL TRUNK

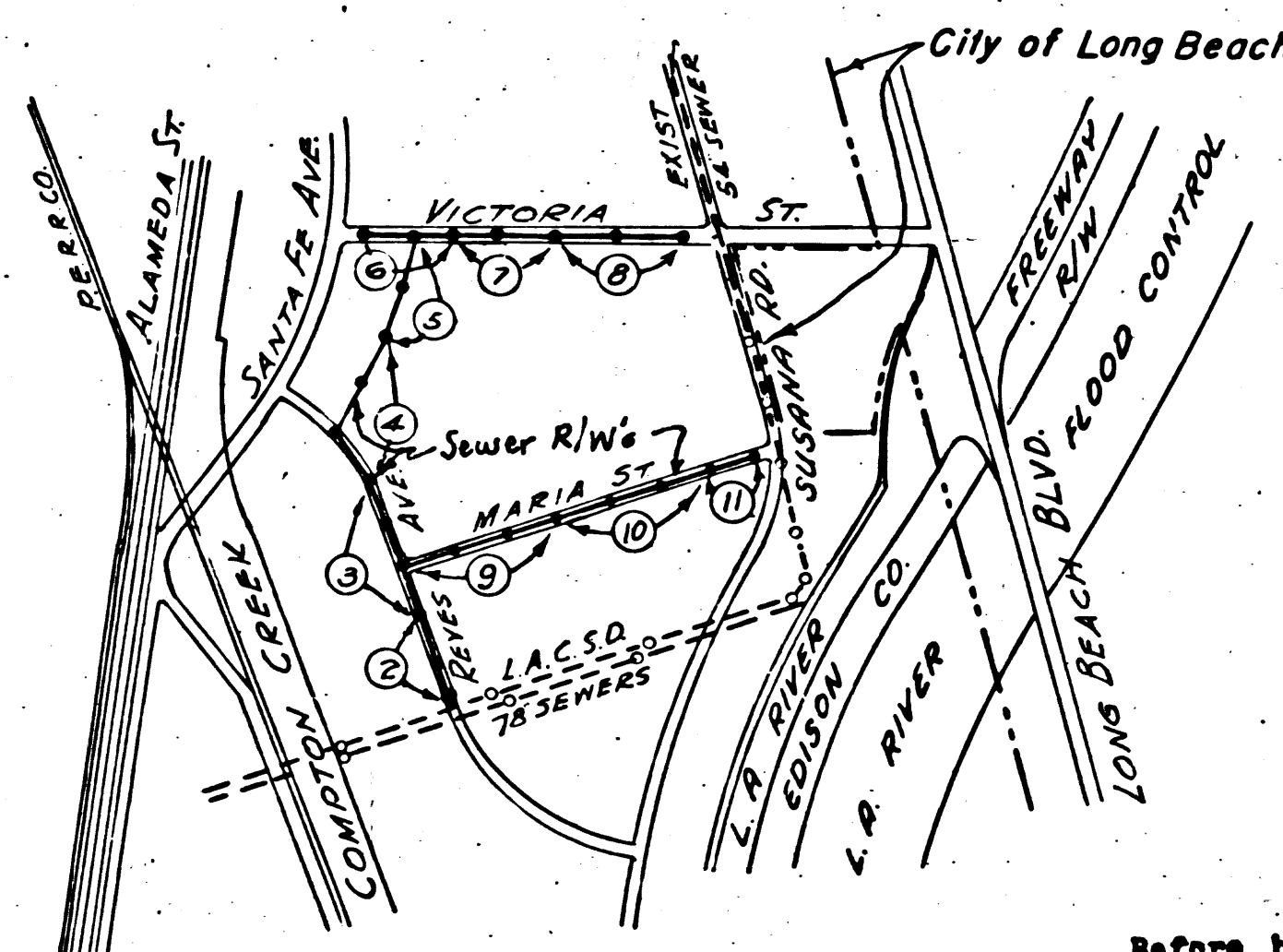
B.M. 44-32 (L.A.C.F.C.D.)  
Std. Disk, S.E. Corner of Valve  
Box, East R.R. R of W Line,  
opposite entrance to Dominguez  
Seminary.  
Elevation - 53.312  
Adjusted L.A. County Precise  
Leveling, 1952 D.M. 5-29  
F.B. 1206, Pg. 29 (L.A. Co. Surv)

### LENNOX BLDG. DIST. N<sup>o</sup> 7

- NOTE:  
Provide stakes on the property lines or property lines produced at right angles to the sewer line at the center line of each manhole.  
No representative of the County Engineer will survey or layout any portion of the work. The owner or his authorized representative shall furnish the County Engineer with grade sheets and stations for all house laterals and Y branches and shall provide stakes for them at their proper locations with stationing plainly marked. Any change in location shall be requested in writing by the owner or his representative.  
No revisions shall be made in these plans without the approval of the County Engineer.
1. Use standard manhole frames and covers, S-a-117, except as noted.
  2. Use standard strength pipe except as noted.
  3. Use cement mortar for all vitrified clay pipe joints.
  4. Resurface all trench within paved area to meet L.A. County Road Dept. or Calif. State Highway Dept. requirements in accordance with permit.
  5. Encase four feet of sewer at points of interference with poles, S-a-119.
  6. House laterals to be constructed with inverts at property line.....6.....feet below curb grade except as noted.
  7. All structures shall be brick sewer structures, S-a-104, except as noted.
  8. Manhole tops in unimproved Rights-Of-Way to be 6" above finish grade.
  9. For allowable leakage test, use Formula No. 1....., Specs., Sec. 51.

SHEET	PAGES
1	1 - 4
2	5 - 8
3	9 - 11

NO CHARGE FOR CONNECTIONS  
*Revised 3-2-55*



INDEX MAP  
SCALE: 1" = 1500'  
P.C. 3206 J.N. 1007.41

*checked 5-17-55 W. H. ...*

TRIM LINE

### PROFILE, ALIGNMENT AND GRADE OF SANITARY SEWERS TO BE CONSTRUCTED FOR THE RANCHO SAN PEDRO INDUSTRIAL AREA

PRIVATE CONTRACT NO. 3206  
W. S. 32  
3 - SHEETS  
Scale: VERT. 1" = 4'  
HORIZ. 1" = 40'  
OCTOBER 1954  
PREPARED IN THE OFFICES OF  
QUINTON ENGINEERS LTD.  
By *H. W. ...* Reg. C. E. No. 6422  
FOR LEGEND SEE PLAN NO. S-a-64

P.C. 3206  
J.N. 1007.41  
PAGE 1

20,502

8 out of 11  
(1)

NOTE:  
Grades to which this improvement is to be constructed are shown on plans and profiles. Grade points for top of curbs, center line of streets, or center line of alleys are shown by circles on profiles. At all points between designated points the grade shall be established so as to conform to a straight line drawn between said designated points.  
Elevations are in feet above U.S.G.S. datum or mean sea level.  
This drawing and the data hereon are hereby made a part of the specifications.  
Work shall be constructed according to specifications on file in the office of the County Engineer and shall be prosecuted only in the presence of the County Engineer.  
Before work can be started, the contractor must obtain a permit to excavate in County streets from the L.A. County Road Dept., 108 W. 2nd St. and make a deposit with the County Engineer, 733 L.A. County Engineering Building, sufficient to cover the cost of construction inspection and record plans.  
Approval of this plan by the County of Los Angeles does not constitute a representation as to the accuracy of the location of or the existence or non-existence of any underground utility, pipe, or structure within the limits of this project. This note applies to all sheets.  
If work is to be done in a State Highway, a permit must be obtained from the State of California, Division of Highways, 120 South Spring Street.

### COUNTY OF LOS ANGELES, CALIFORNIA

Approved, William J. Fox, County Engineer

Approved, A. M. Rawm

CHIEF ENGR. CO. SAN. DIST. NO. 8

Checked By: *A.P. ...* 3-2-55  
Office of County Engineer, Reg. C. E. No. 7260

Before breaking into any existing structure or  
and before final acceptance of this work,  
County Sanitation District should be notified  
in order that required inspection may be made.

5330-D-202

(2x272)

TRIM LINE

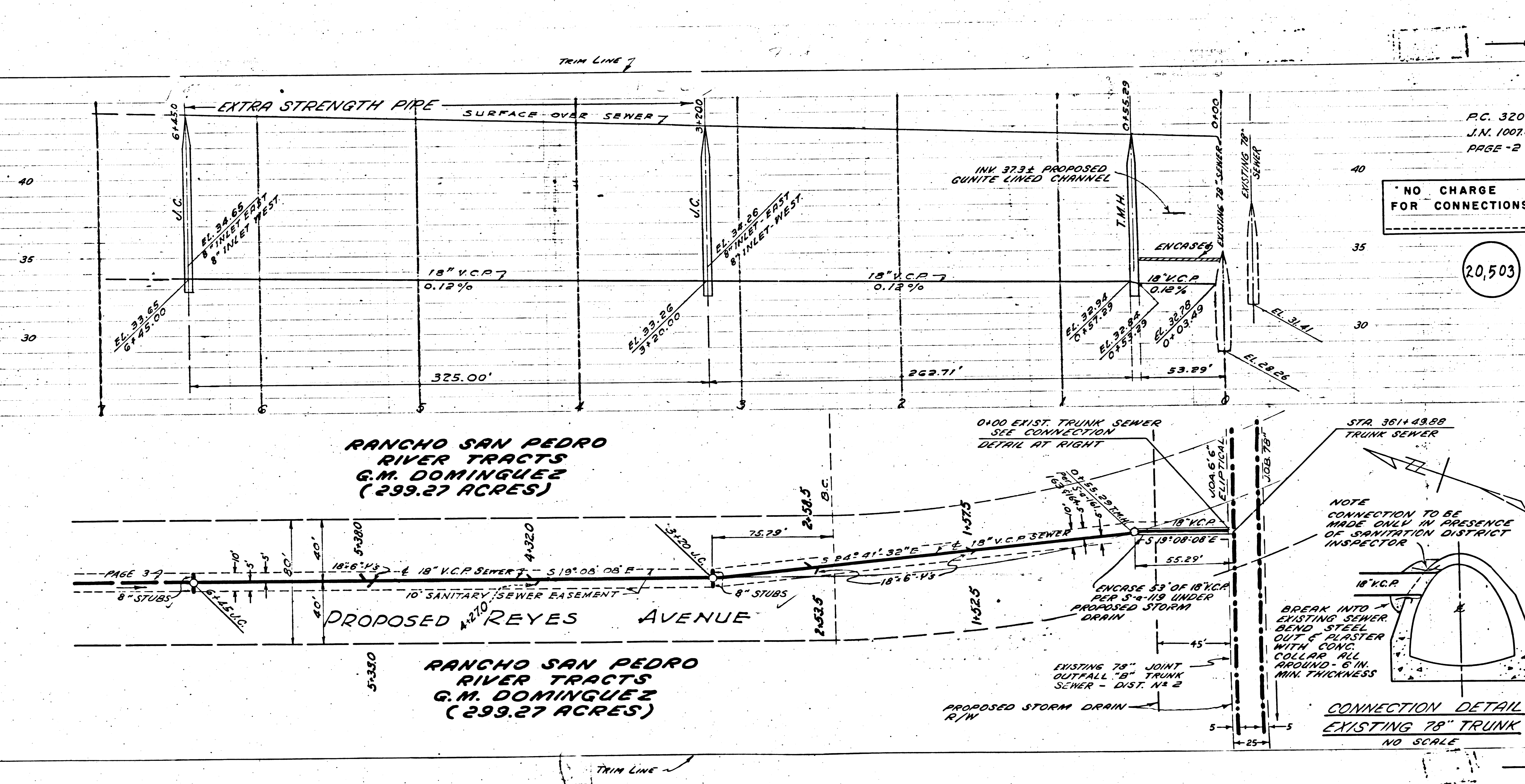


CHARGE CONNECTIONS

20,504

NO CHARGE FOR CONNECTIONS

20,503





P.C. 3206  
L.V. 1007.41  
PAGE-4

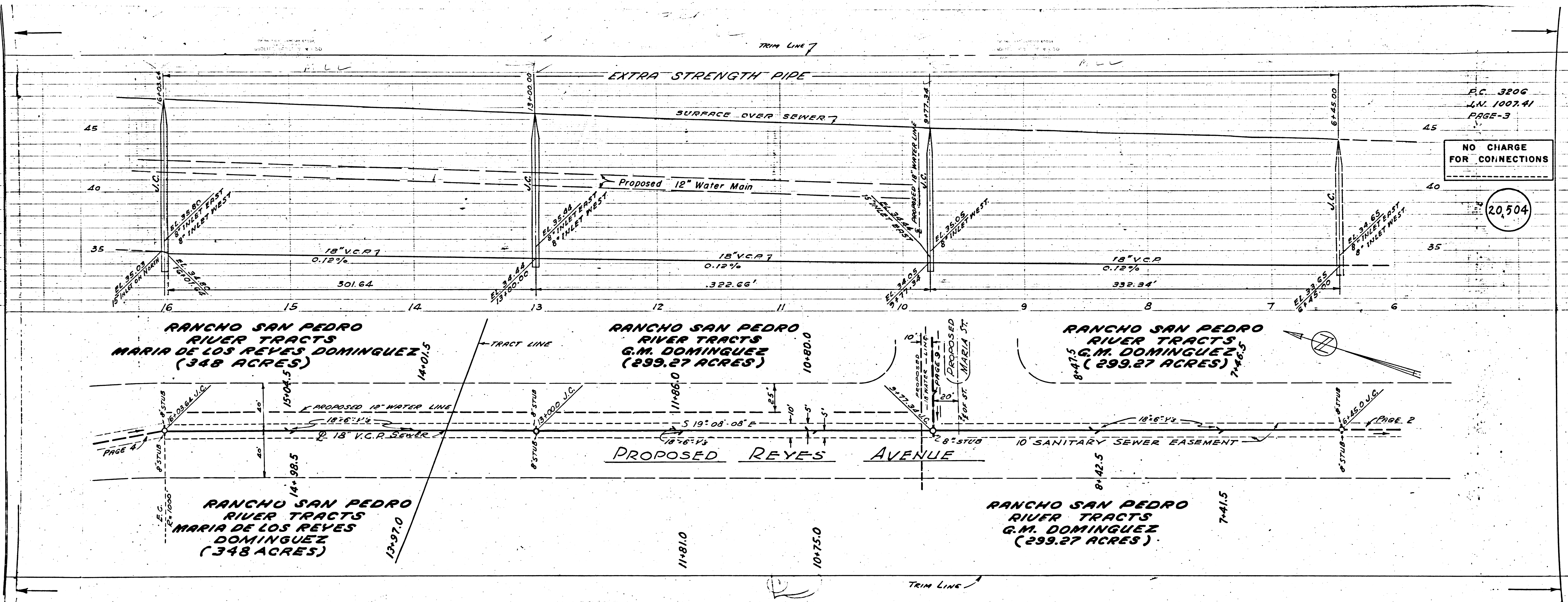
NO CHARGE  
FOR CONNECTIONS

20,505

P.C. 3206  
L.V. 1007.41  
PAGE-3

NO CHARGE  
FOR CONNECTIONS

20,504





P.C. 3206  
J.N. 1007.41  
PAGE-5

NO CHARGE  
FOR CONNECTIONS

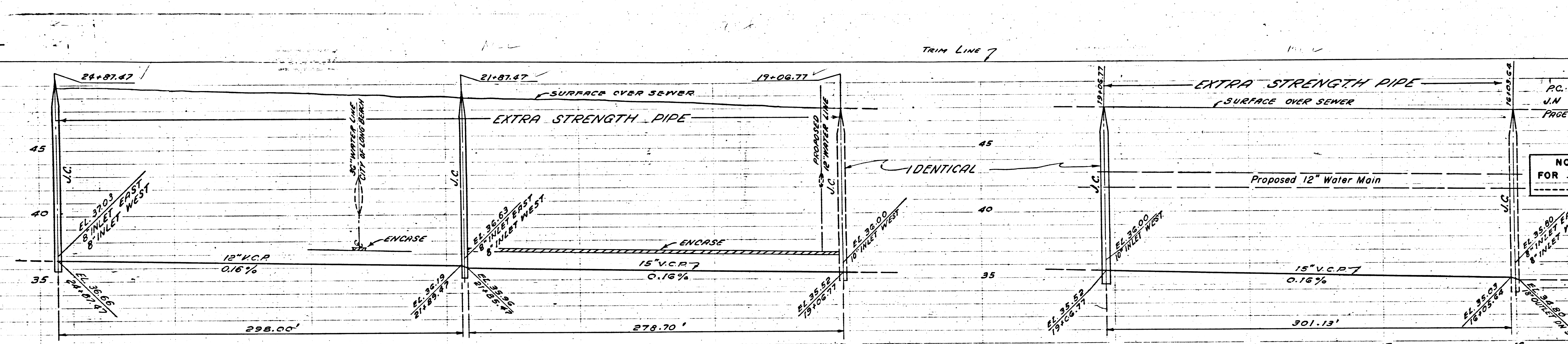
20,506

EL. 3703  
8" INLET EAST  
8" INLET WEST

EL. 3703  
8" INLET EAST  
8" INLET WEST

PAGE 5

PAGE 4

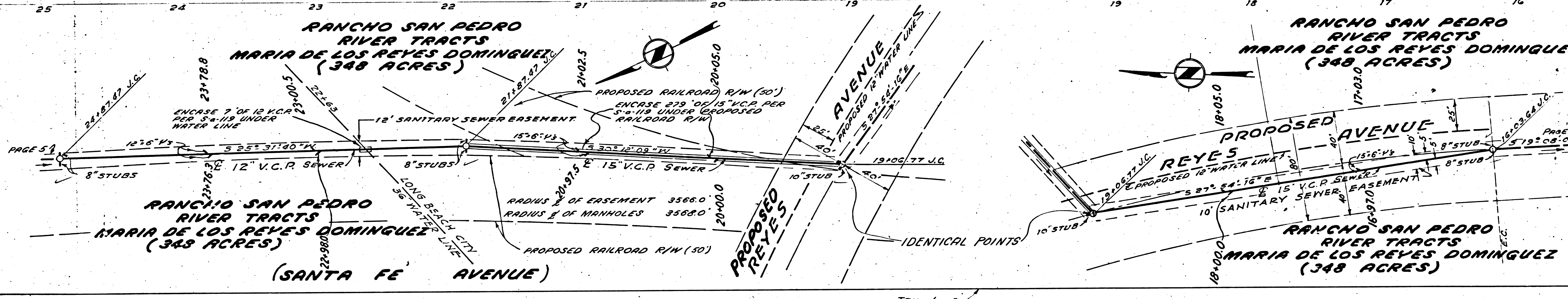


P.C. 3206  
J.N. 1007.41  
PAGE-4

NO CHARGE  
FOR CONNECTIONS

20,505

EL. 3703  
8" INLET EAST  
8" INLET WEST



RANCHO SAN PEDRO  
RIVER TRACTS  
MARIA DE LOS REYES DOMINGUEZ  
(348 ACRES)

RANCHO SAN PEDRO  
RIVER TRACTS  
MARIA DE LOS REYES DOMINGUEZ  
(348 ACRES)

RANCHO SAN PEDRO  
RIVER TRACTS  
MARIA DE LOS REYES DOMINGUEZ  
(348 ACRES)

RANCHO SAN PEDRO  
RIVER TRACTS  
MARIA DE LOS REYES DOMINGUEZ  
(348 ACRES)

(SANTA FE AVENUE)

PROPOSED  
REYES

PROPOSED  
AVENUE

AVENUE

PROPOSED  
REYES

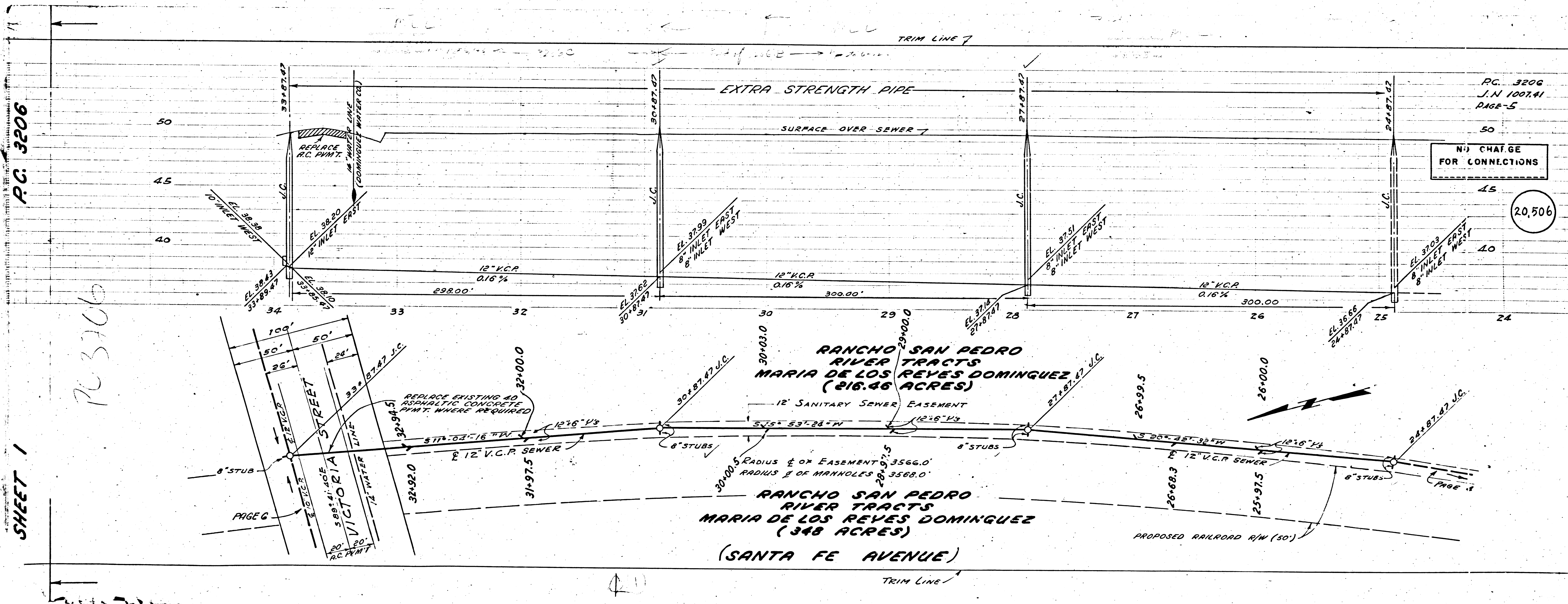
TRIM LINE



P.C. 3206

SHEET 1

PC 3206



P.C. 3206  
J.N. 1007.41  
PAGE 5

N:1 CHARTER FOR CONNECTIONS

20,506

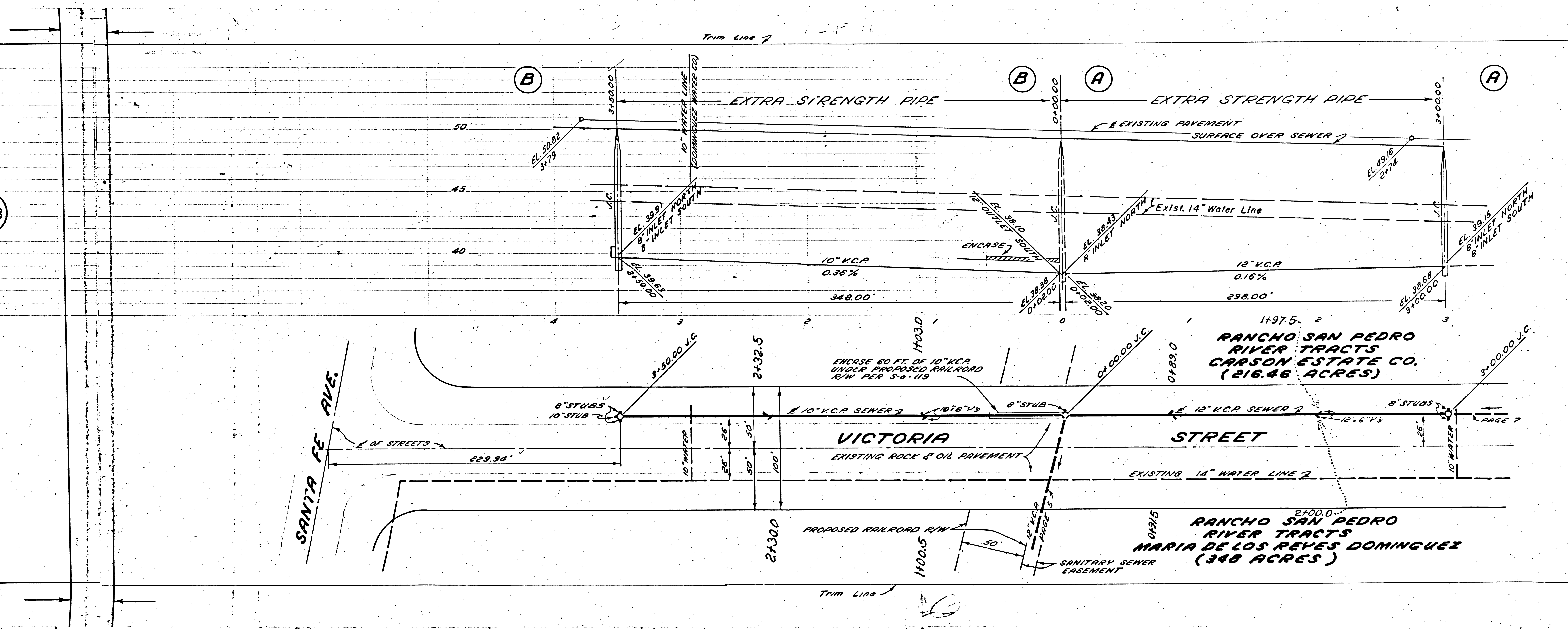
PAGE 5



6  
41

E  
TIONS

(20,508)



PC 3206  
J.N. 100741  
PAGE 6

NO CHARGE  
FOR CONNECTIONS

(20,507)

PC 3206

PC 3206

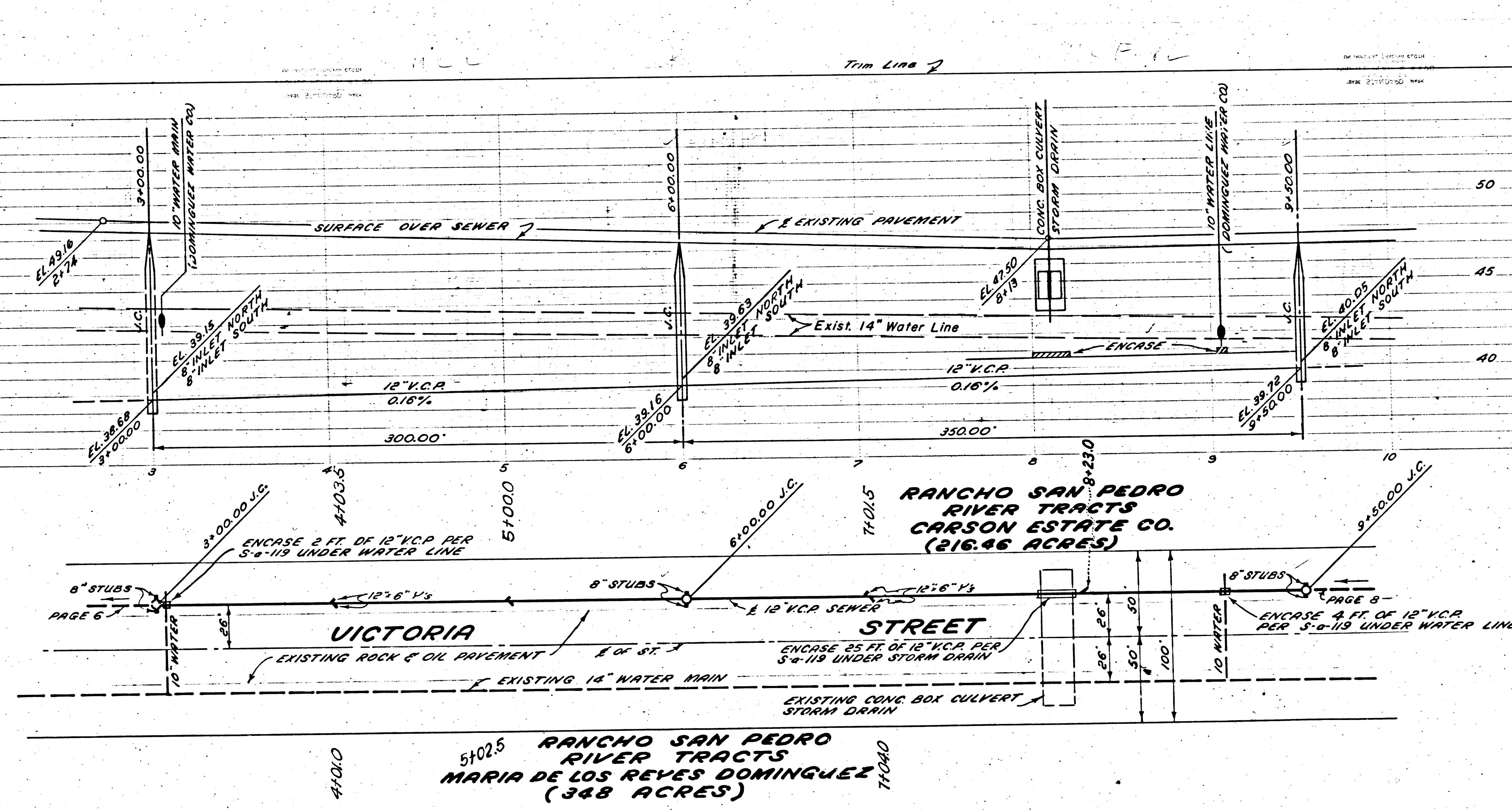
RL



AC. 3206  
J.N. 100741  
PAGE 8

N J CHARGE  
FOR CONNECTIONS

20,509

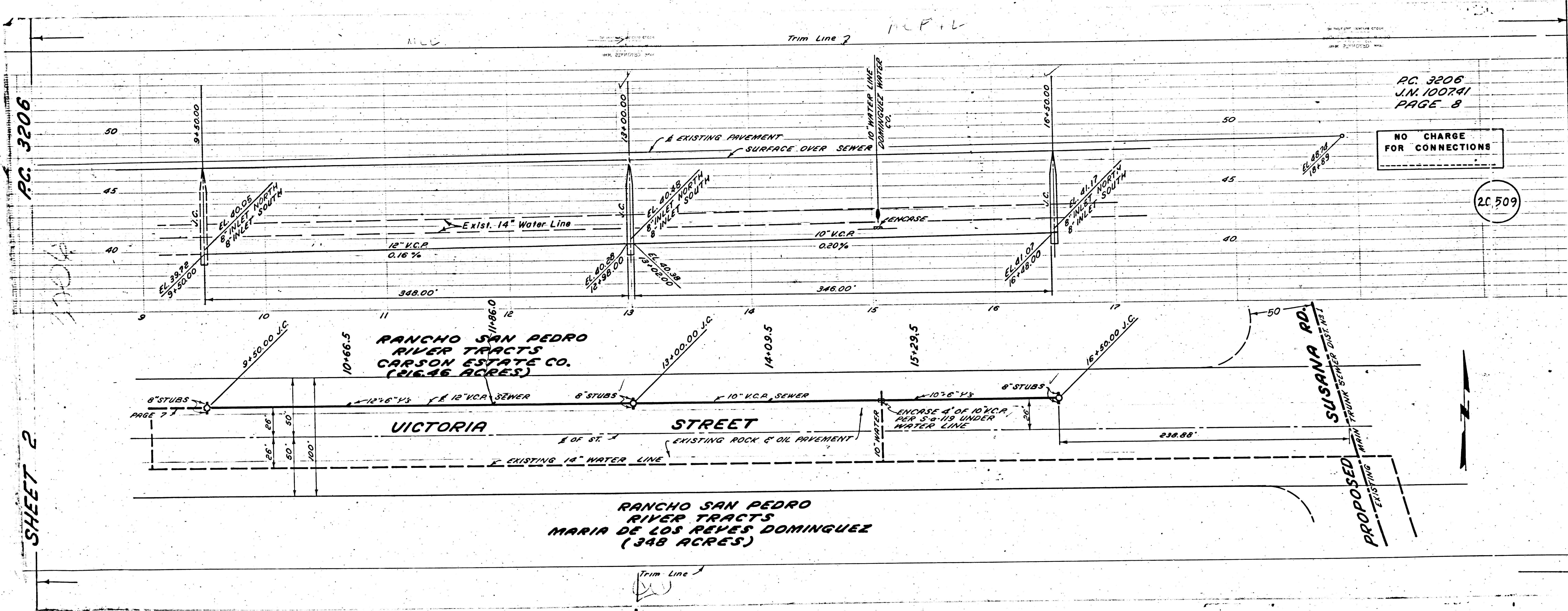


AC. 3206  
J.N. 100741  
PAGE 7

N J CHARGE  
FOR CONNECTIONS

20,508





PC 3206

SHEET 2

PC 3206  
J.N. 100741  
PAGE 8

NO CHARGE  
FOR CONNECTIONS

21.509

RANCHO SAN PEDRO  
RIVER TRACTS  
MARIA DE LOS REYES DOMINGUEZ  
(348 ACRES)

RANCHO SAN PEDRO  
RIVER TRACTS  
CARSON ESTATE CO.  
(216.46 ACRES)

VICTORIA STREET

SUSANA RD.  
PROPOSED MAIN TRUNK SEWER DIST. RT.

Trim Line ?

Trim Line

PAGE 7



PG. 3206  
J.N.100741  
PAGE 10

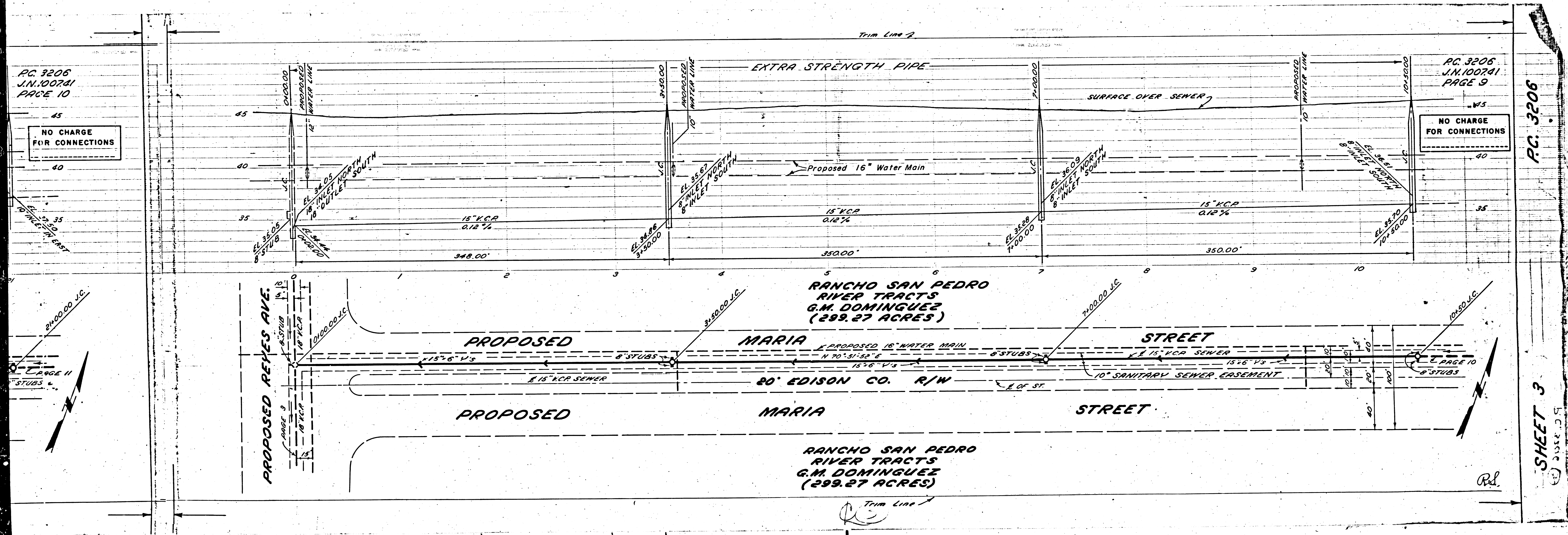
NO CHARGE  
FOR CONNECTIONS

PG. 3206  
J.N.100741  
PAGE 9

NO CHARGE  
FOR CONNECTIONS

PG. 3206

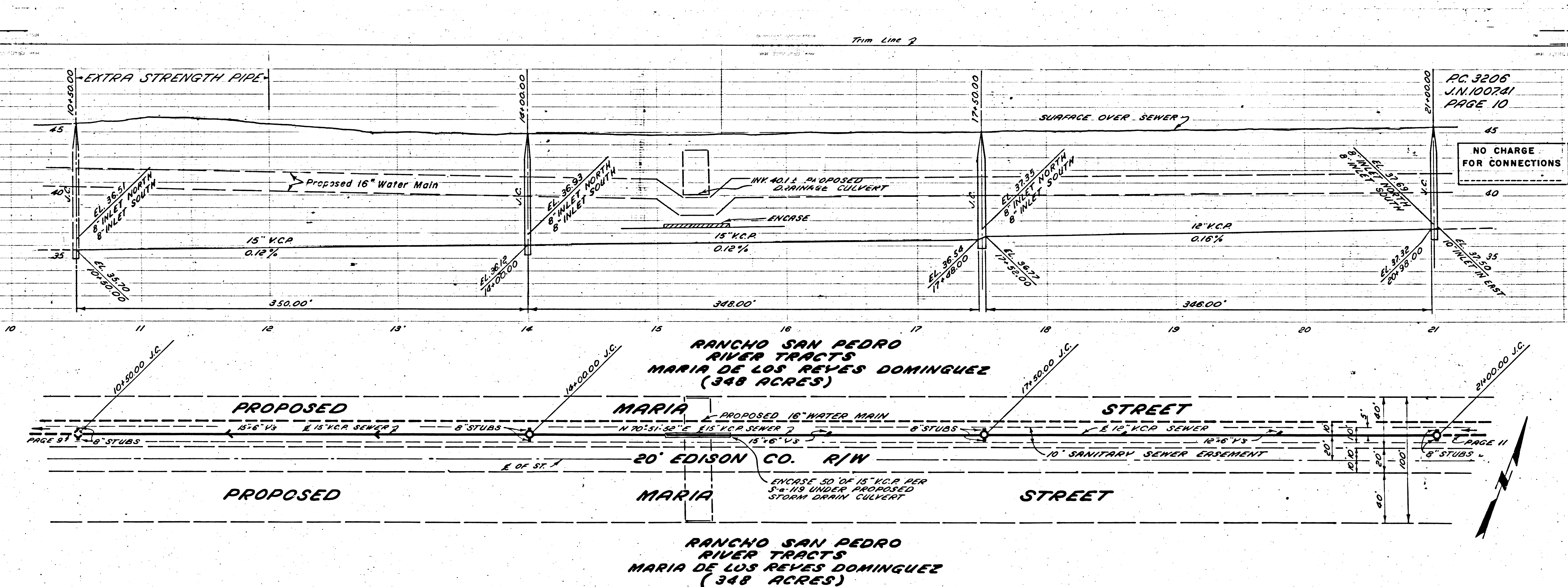
SHEET 3



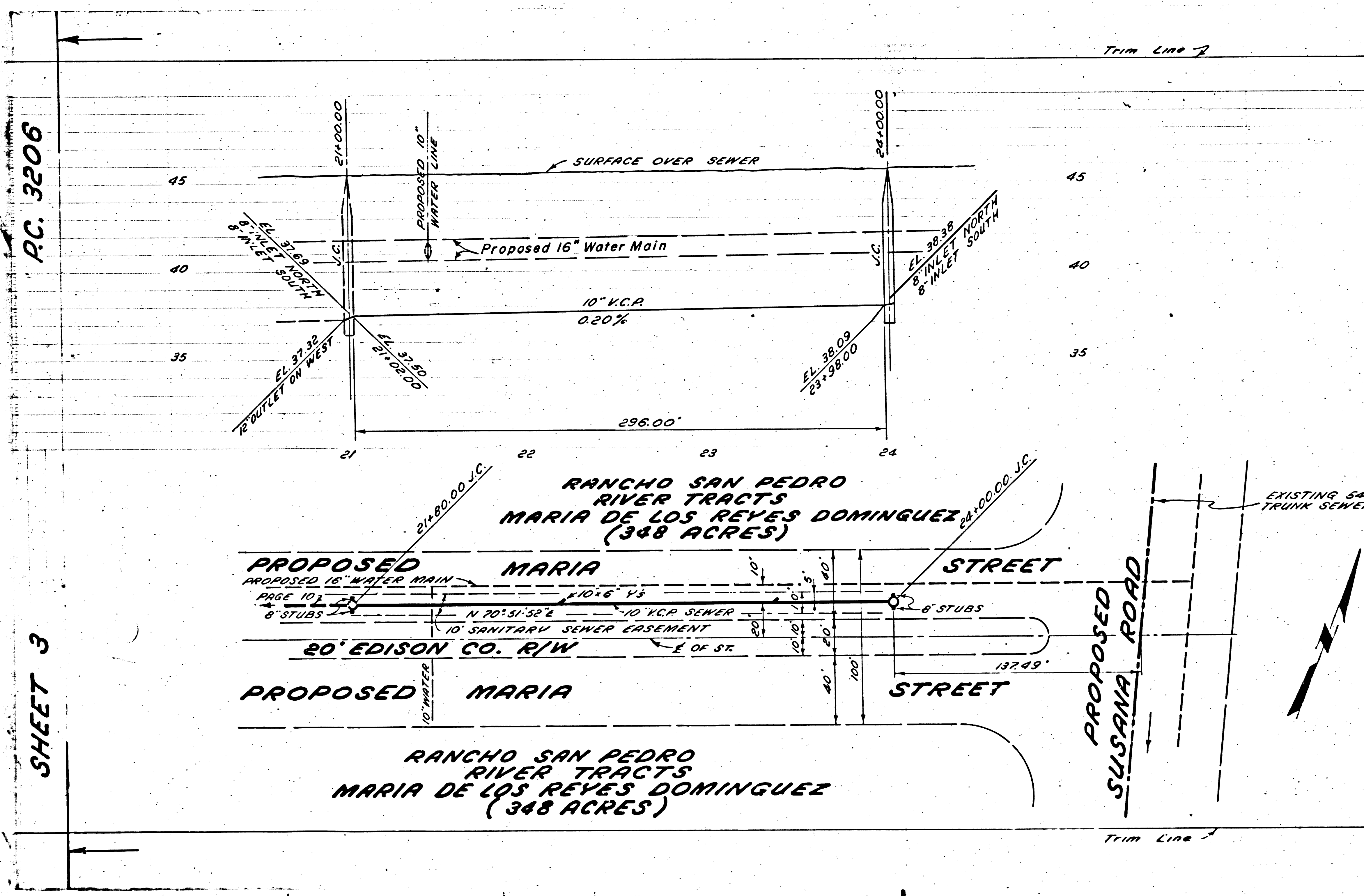


P.C. 3206  
J.N. 100741  
PAGE 11

NO CHARGE  
FOR CONNECTIONS







P.C. 3206  
J.N. 106741  
PAGE 11

NO CHARGE  
FOR CONNECTIONS

P.C. 3206

SHEET 3

Trim Line

Trim Line

