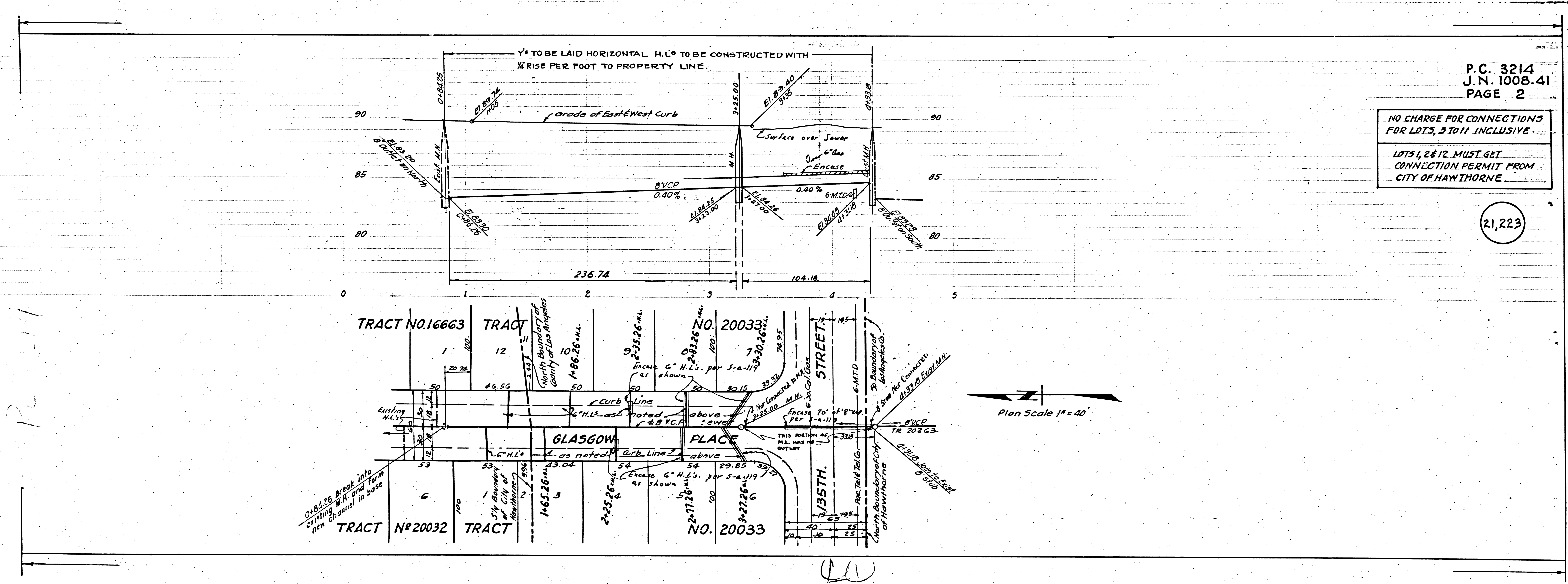


5193.29
10,800 M.L.

TRACT 9N T34R1

24V.2EMES



P.C. 3214
J.N. 1008.41
PAGE 2

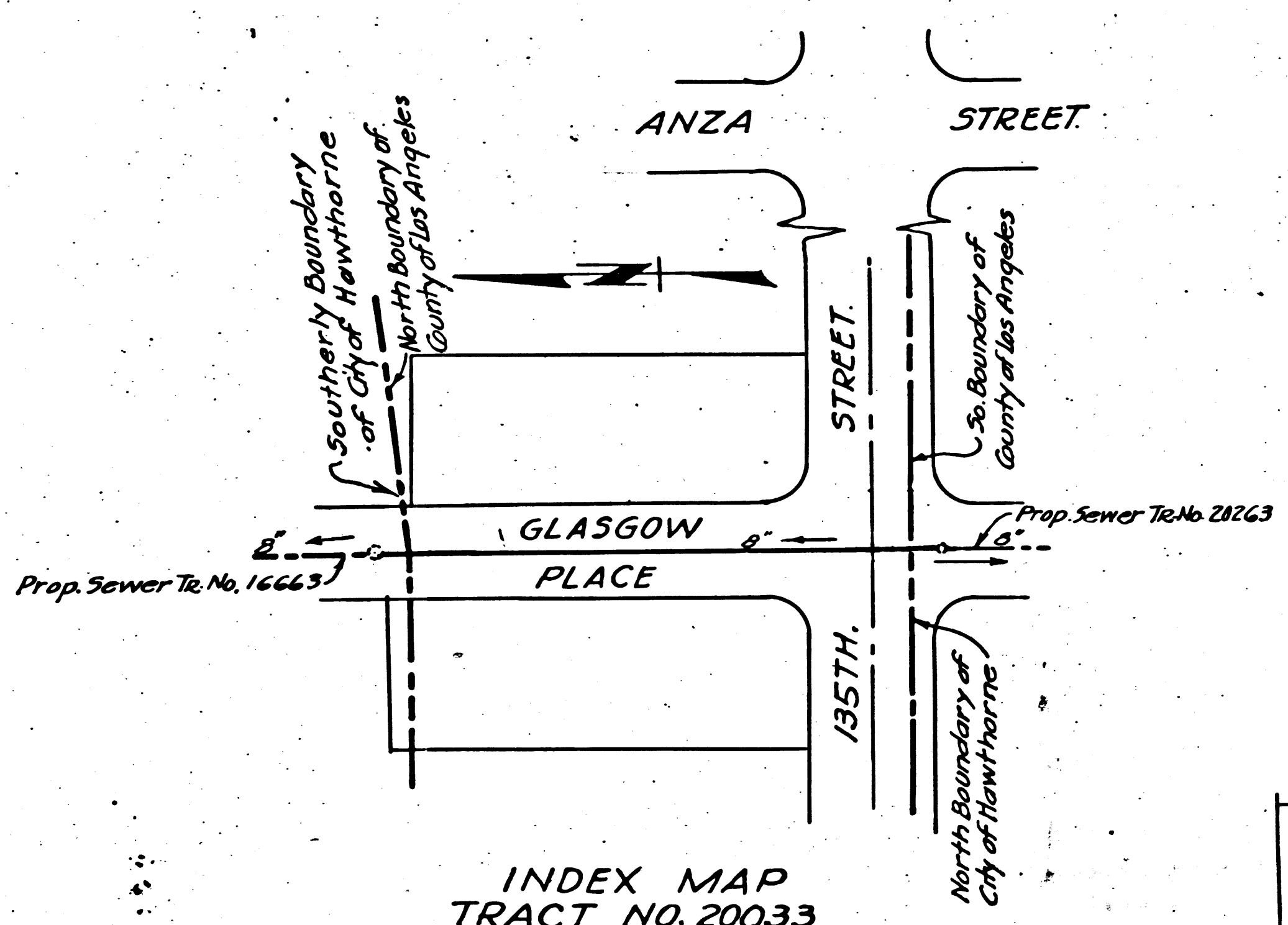
NO CHARGE FOR CONNECTIONS
FOR LOTS 3 TO 11 INCLUSIVE

LOTS 1, 2 & 12 MUST GET
CONNECTION PERMIT FROM
CITY OF HAWTHORNE

21,223

Plan Scale 1" = 40'

Prop. Serv.



INDEX MAP
TRACT NO. 20033
SCALE 1"=100'
P.C. 3214 J.N. 1008.41

B.M. - 5Y 1055 Elev. 84.770, Spike
In I.P. 50' East of & intersection
of 135th St. & Anza Ave, 6' Deep

NO CHARGE
FOR CONNECTIONS
L. Carter 10-10-54

Checked 10-10-55 W. J. Fox

PAGES	SHEET
1-2	1

LENNOX BLDG. DIST. NO 7

- NOTE:
NO REPRESENTATIVE OF THE COUNTY ENGINEER WILL SURVEY OR LAY OUT ANY PORTION OF THE WORK.
THE OWNER OR HIS AUTHORIZED REPRESENTATIVE SHALL FURNISH THE COUNTY ENGINEER WITH GRADE SHEETS AND STATIONS FOR ALL HOUSE LATERALS AND Y BRANCHES AND SHALL PROVIDE STAKES FOR THEM AT THEIR PROPER LOCATIONS WITH STATIONING PLAINLY MARKED. ANY CHANGE OF LOCATION SHALL BE REQUESTED IN WRITING BY THE OWNER OR HIS REPRESENTATIVE.
NO REVISIONS SHALL BE MADE IN THESE PLANS WITHOUT APPROVAL OF THE COUNTY ENGINEER.
1. USE STANDARD MANHOLE FRAMES AND COVERS, 5-a-117.
 2. USE STANDARD STRENGTH PIPE EXCEPT AS NOTED.
 3. USE CEMENT MORTAR FOR ALL VITRIFIED CLAY PIPE JOINTS.
 4. RESURFACE ALL TRENCH WITHIN PAVED AREA TO MEET L.A. COUNTY ROAD DEPT. REQUIREMENTS IN ACCORDANCE WITH PERMIT.
 5. ENCASE FOUR FEET OF SEWER AT POINTS OF INTERFERENCE WITH POLES, 5-a-119.
 6. HOUSE LATERALS TO BE CONSTRUCTED WITH 1/4" RISE PER FOOT TO PROPERTY LINE GRADE.
 7. ALL STRUCTURES SHALL BE BRICK SEWER STRUCTURES, 5-a-104.
 8. PROVIDE STAKES ON THE PROPERTY LINES OR PROPERTY LINES PRODUCED, AT RIGHT ANGLES TO THE SEWER LINE AT THE CENTER LINE OF EACH MANHOLE.
 9. FOR ALLOWABLE LEAKAGE TEST USE FORMULA NO-1 SPECS. SEC. 51.

ENGINEERING SERVICE CORPORATION	
1127 W. WASHINGTON BLVD. LOS ANGELES 15, CALIF. PR. 7281	
REVISIONS	TRACED BY _____
Revised Grades 3/28/55	DESIG'D BY _____
	CK'D BY _____
	SUBMITTED _____
SUB STRUCTURES OK'D	
W. O. NO.	DWG. NO.
5676-61	JUNE 54
SCALE	L.B.
NOTED	F.B.

Revision Approved:
W. J. Fox 3-30-55
Office of County Engineer
Reg. C.E. No. 7860

APPROVED BY THE CITY
OF HAWTHORNE
W. J. Fox 10/10/54
CITY ENGINEER

PROFILE, ALIGNMENT AND GRADE OF
SANITARY SEWERS
TO BE CONSTRUCTED IN

P.C. 3214
J.N. 1008.41
PAGE 1

TRACT NO 20033

PRIVATE CONTRACT NO. 3214
W. S.

SHEET 1 OF 1 SHEETS

21,222

SCALE: VERT. 1"=4'
HOR. 1"=40'

PREPARED IN THE OFFICES OF
ENGINEERING SERVICE CORPORATION

BY W. J. Fox
REG. C. E. NO. 3692

FOR LEGEND
SEE PLAN NO. 5-a-64

NOTE:
GRADES TO WHICH THIS IMPROVEMENT IS TO BE CONSTRUCTED ARE SHOWN ON PLANS AND PROFILES. GRADE POINTS FOR TOP OF CURB, CENTER LINE OF STREETS, OR CENTER LINE OF ALLEY ARE SHOWN BY CIRCLES ON PROFILES. AT ALL POINTS BETWEEN DESIGNATED POINTS THE GRADE SHALL BE ESTABLISHED SO AS TO CONFORM TO A STRAIGHT LINE DRAWN BETWEEN SAID DESIGNATED POINTS.
ELEVATIONS ARE IN FEET ABOVE U. S. G. S. DATUM OR MEAN SEA LEVEL.
THIS DRAWING AND THE DATA HEREON ARE HEREBY MADE A PART OF THE SPECIFICATIONS.
WORK SHALL BE CONSTRUCTED ACCORDING TO SPECIFICATIONS ON FILE IN THE OFFICE OF THE COUNTY ENGINEER AND SHALL BE PROSECUTED ONLY IN THE PRESENCE OF THE COUNTY ENGINEER.
BEFORE WORK CAN BE STARTED THE CONTRACTOR MUST OBTAIN A PERMIT TO EXCAVATE IN COUNTY STREETS FROM THE L. A. COUNTY ROAD DEPT. 108 W. 2ND ST. AND MAKE A DEPOSIT WITH THE COUNTY ENGINEER, 733 COUNTY ENGINEERING BUILDING SUFFICIENT TO COVER THE COST OF CONSTRUCTION INSPECTION AND RECORD PLANS.
APPROVAL OF THIS PLAN BY THE COUNTY OF LOS ANGELES DOES NOT CONSTITUTE A REPRESENTATION AS TO THE ACCURACY OF THE LOCATION OF, OR THE EXISTENCE OR NON-EXISTENCE OF, ANY UNDERGROUND UTILITY, PIPE, OR STRUCTURE WITHIN THE LIMITS OF THIS PROJECT.

COUNTY OF LOS ANGELES, CALIFORNIA
APPROVED
WILLIAM J. FOX
COUNTY ENGINEER
BY W. J. Fox
APPROVED, A. M. RAWN
CHIEF ENGINEER OF COUNTY
SANITATION DISTRICT NO. 5
BY A. M. Rawn
CHECKED BY W. J. Fox
OFFICE OF COUNTY ENGINEER
REG. C. E. NO. 7860

20033

135th St. 20033

P.C. 3214

R.L.