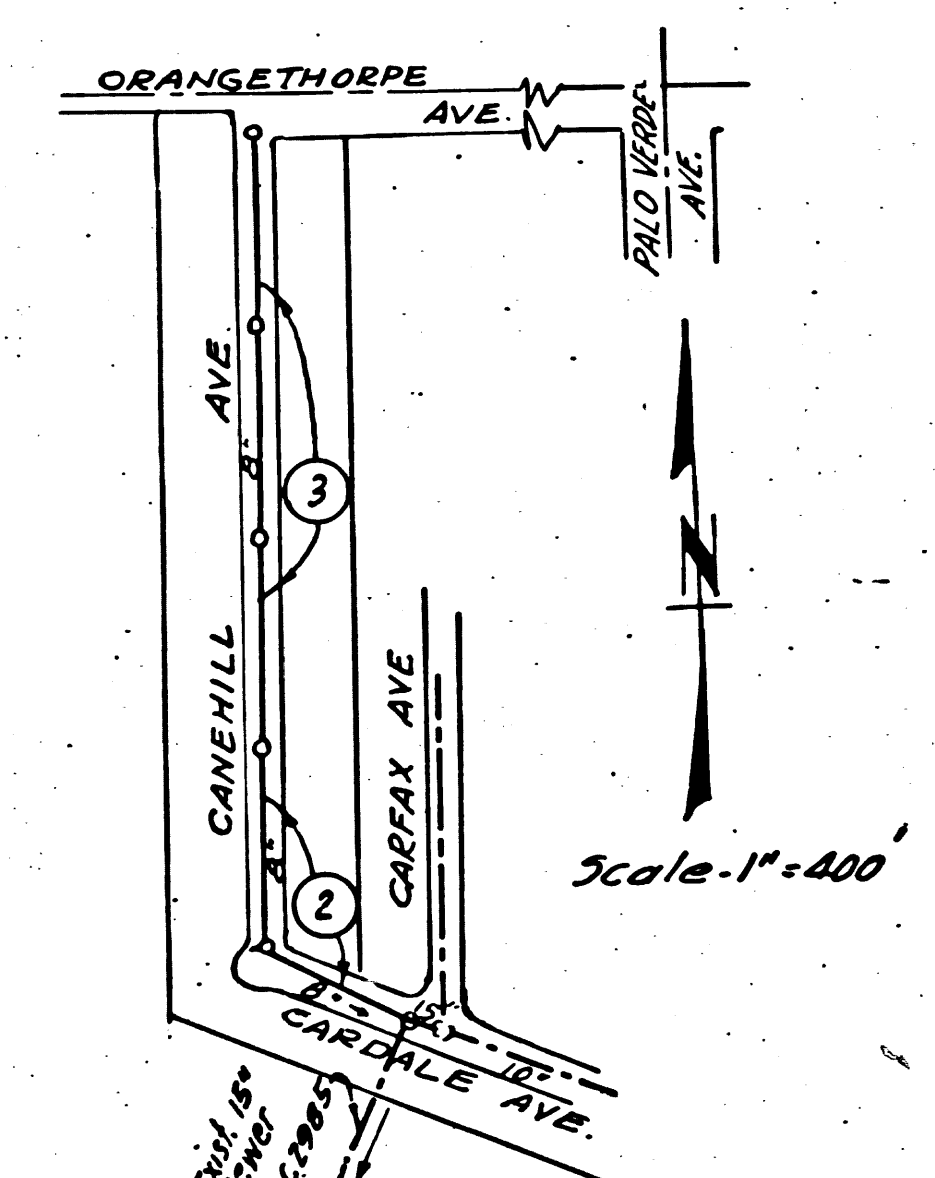


BELLFLOWER BLDG. DIST. NO 4

- NOTE:
 NO REPRESENTATIVE OF THE COUNTY ENGINEER WILL SURVEY OR LAY OUT ANY PORTION OF THE WORK.
 THE OWNER OR HIS AUTHORIZED REPRESENTATIVE SHALL FURNISH THE COUNTY ENGINEER WITH GRADE SHEETS AND STATIONS FOR ALL HOUSE LATERALS AND Y BRANCHES AND SHALL PROVIDE STAKES FOR THEM AT THEIR PROPER LOCATIONS WITH STATIONING PLAINLY MARKED. ANY CHANGE OF LOCATION SHALL BE REQUESTED IN WRITING BY THE OWNER OR HIS REPRESENTATIVE.
- NO REVISIONS SHALL BE MADE IN THESE PLANS WITHOUT APPROVAL OF THE COUNTY ENGINEER.
1. USE STANDARD MANHOLE FRAMES AND COVERS, S-a-117.
 2. USE STANDARD STRENGTH PIPE EXCEPT AS NOTED.
 3. USE JOINT COMPOUND "X" OR "B" FOR ALL VITRIFIED CLAY PIPE JOINTS PER SPECS. SEC. 31.
 4. RESURFACE ALL TRENCH WITHIN PAVED AREA TO MEET L.A. COUNTY ROAD DEPT. REQUIREMENTS IN ACCORDANCE WITH PERMIT.
 5. ENCASE FOUR FEET OF SEWER AT POINTS OF INTERFERENCE WITH POLES, S-a-119.
 6. HOUSE LATERALS TO BE CONSTRUCTED WITH INVERT AT PROPERTY LINE 5 FEET BELOW CURB GRADE.
 7. ALL STRUCTURES SHALL BE BRICK SEWER STRUCTURES, S-a-104.
 8. PROVIDE STAKES ON THE PROPERTY LINES OR PROPERTY LINES PRODUCED AT RIGHT ANGLES TO THE SEWER LINE AT THE CENTER LINE OF EACH MANHOLE.
 9. FOR ALLOWABLE LEAKAGE TEST USE FORMULA NO SPECS. 2 SEC. 51.

SHEET	PAGES
1	1-3



INDEX MAP
 TRACT NO. 17897
 P.C. 3219 J.N. 1008.81

B-M-3-Y 138-56 E1.45.647
 Lead & Tack in W. Curb Woodruff
 ± 1-foot South of Curb Return
 at S.W. Corner of Carson.
 ADJUSTED 1952 E1.45.555

Checked 12-7-54 W. Farren

ENGINEERING SERVICE CORPORATION 1127 W. WASHINGTON BLVD. LOS ANGELES 15, CALIF. PR. 7281	
REVISIONS	TRACED BY <u>J.W.F.</u>
	DES'G'D BY <u>J.W.F.</u>
	CK'D BY
	SUBMITTED <u>MA</u>
SUB STRUCTURES OK'D	
W. O. NO.	DWG. NO.
6641-1	10-26-54
DATE	SCALE
10-26-54	NOTED
L.B.	P.B.

NO CHARGE FOR CONNECTIONS
 10-26-54

PROFILE, ALIGNMENT AND GRADE OF
SANITARY SEWERS
 TO BE CONSTRUCTED IN
TRACT NO. 17897
 PRIVATE CONTRACT NO. 3219
 W. S. 31
 SHEET 1 OF 1 SHEET
 SCALE: VERT. 1"=4'
 HOR. 1"=40'
SEPTEMBER 1954
 PREPARED IN THE OFFICES OF
 ENGINEERING SERVICE CORPORATION
 BY E. J. Fox
 REG. C. E. NO. 3692

P. C. 3219
 J. N. 1008.02
 PAGE 1

11378

FOR LEGEND
 SEE PLAN NO. S-a-64

NOTE:
 GRADES TO WHICH THIS IMPROVEMENT IS TO BE CONSTRUCTED ARE SHOWN ON PLANS AND PROFILES. GRADE POINTS FOR TOP OF CURB, CENTER LINE OF STREETS, OR CENTER LINE OF ALLEY ARE SHOWN BY CIRCLES ON PROFILES. AT ALL POINTS BETWEEN DESIGNATED POINTS THE GRADE SHALL BE ESTABLISHED SO AS TO CONFORM TO A STRAIGHT LINE DRAWN BETWEEN SAID DESIGNATED POINTS.

ELEVATIONS ARE IN FEET ABOVE U. S. G. S. DATUM OR MEAN SEA LEVEL.
 THIS DRAWING AND THE DATA HEREON ARE HEREBY MADE A PART OF THE SPECIFICATIONS.

WORK SHALL BE CONSTRUCTED ACCORDING TO SPECIFICATIONS ON FILE IN THE OFFICE OF THE COUNTY ENGINEER AND SHALL BE PROSECUTED ONLY IN THE PRESENCE OF THE COUNTY ENGINEER.

BEFORE WORK CAN BE STARTED THE CONTRACTOR MUST OBTAIN A PERMIT TO EXCAVATE IN COUNTY STREETS FROM THE L. A. COUNTY ROAD DEPT. 108 W. 2ND ST. AND MAKE A DEPOSIT WITH THE COUNTY ENGINEER, 733 COUNTY ENGINEERING BUILDING SUFFICIENT TO COVER THE COST OF CONSTRUCTION INSPECTION AND RECORD PLANS.

APPROVAL OF THIS PLAN BY THE COUNTY OF LOS ANGELES DOES NOT CONSTITUTE A REPRESENTATION AS TO THE ACCURACY OF THE LOCATION OF, OR THE EXISTENCE OR NON-EXISTENCE OF, ANY UNDERGROUND UTILITY, PIPE, OR STRUCTURE WITHIN THE LIMITS OF THIS PROJECT.

COUNTY OF LOS ANGELES, CALIFORNIA

APPROVED
 WILLIAM J. FOX
 COUNTY ENGINEER

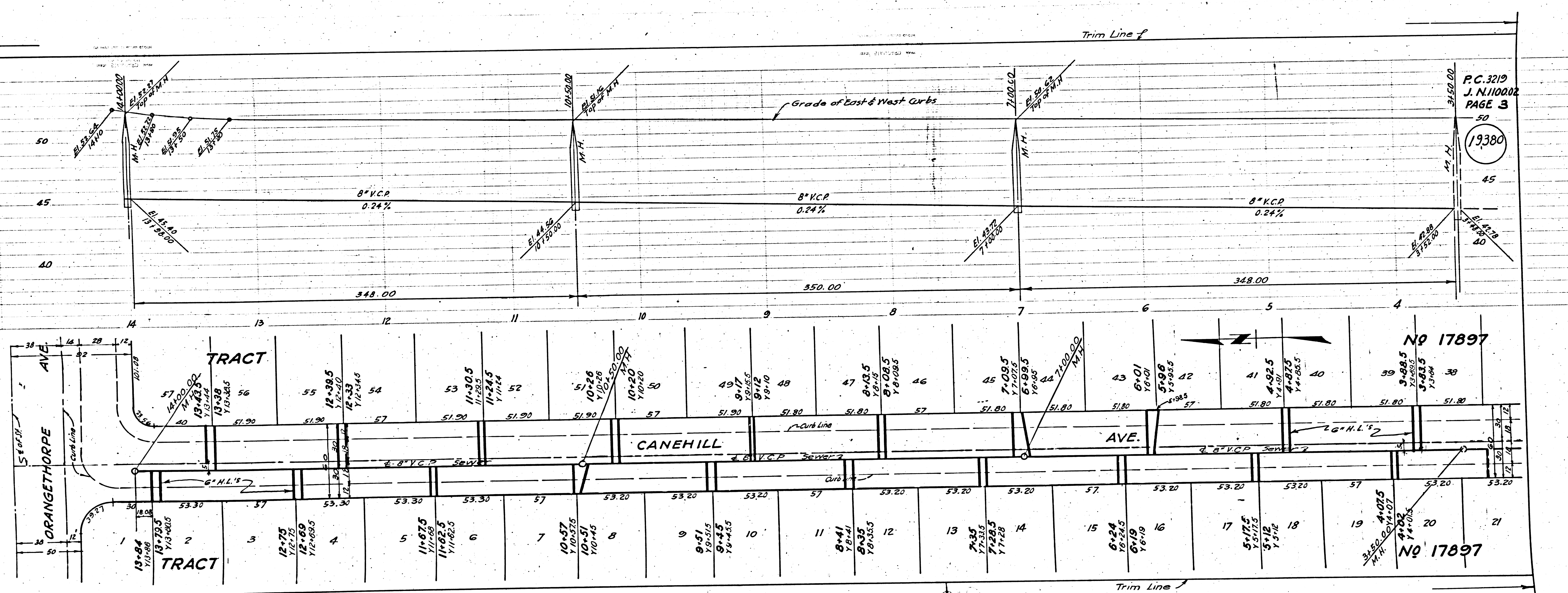
APPROVED, A. M. RAWN
 CHIEF ENGINEER OF COUNTY
 SANITATION DISTRICT NO. 3

BY E. J. Fox BY E. J. Fox
 1117 SANITATION ENGINEER 10-26-54
 CHECKED BY E. J. Fox
 OFFICE OF COUNTY ENGINEER
 REG. C. E. NO. 7860

SAN SEWERS

TRACT NO. 17897

R.L.



P.C. 3219
 J. N. 110002
 PAGE 3
 19380

No 17897

No 17897