

NOTE: BELLFLOWER BLDG DIST. N° 4

Provide stakes on the property lines or property lines produced at right angles to the sewer line at the center line of each manhole.

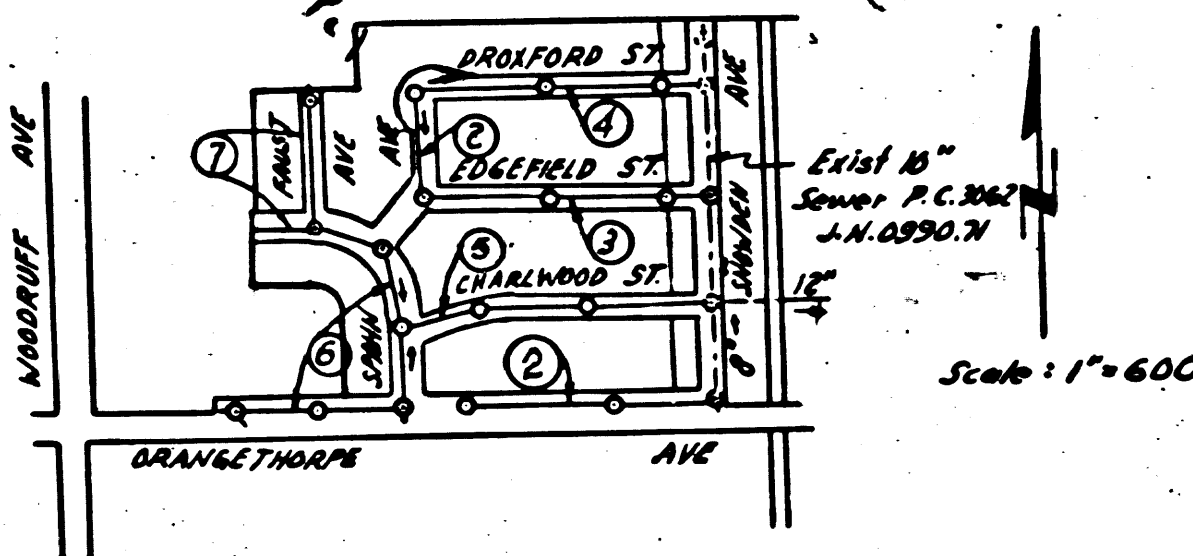
No representative of the County Engineer will survey or layout any portion of the work. The owner or his authorized representative shall furnish the County Engineer with grade sheets and stations for all house laterals and Y branches and shall provide stakes for them at their proper locations with stationing plainly marked. Any change in location shall be requested in writing by the owner or his representative.

No revisions shall be made in these plans without the approval of the County Engineer.

1. Use standard manhole frames and covers, S-a-117.
2. Use standard strength pipe except as noted.
3. Use joint compound for all vitrified clay pipe joints per spec's, sec. 31.
4. Resurface all trench within paved area to meet L.A. County Road Dept. or California State Highway Dept. requirements in accordance with permit.
5. Encase four feet of sewer at points of interference with poles, S-a-119.
6. House laterals to be constructed with inverts at property line 5 feet below curb grade except as noted.
7. All structures shall be brick sewer structures, S-a-104.
8. For allowable leakage test, use Formula No. 2 Spec's., Sec. 51.
9. Manhole tops in unimproved Rights-Of-Way to be 6" above finish grade.

B.M. 54 755 El. 54.314 Roof spike in conc. divvt. 14' south of E. of Orangehurst Ave. 70' East of E. of Woodruff Ave.

SHEET	PAGES
1	1-4
2	5-7



INDEX MAP
TRACT N° 19982
P.C. 3220 J.N. 1008.91

Revised grades checked:
by: *R. K. ...* 1-11-55
Office of County Engineer Reg. C. E. No. 7860

NO CHARGE FOR CONNECTIONS
Ledia ... 10-26-54

PROFILE, ALIGNMENT AND GRADE OF
SANITARY SEWERS
TO BE CONSTRUCTED IN
TRACT N° 19982

PC. 3220
J.N. 1100.02
Page 1

19,502

(7)

PRIVATE CONTRACT NO. 3220
W. S. 33
2 SHEETS

Scale: VERT. 1" = 4' HORIZ. 1" = 40' SEPT. 1954

PREPARED IN THE OFFICES OF

BARCLAY SURVEYING COMPANY

Robert B. Sebring Reg. C. E. No. 8109

FOR LEGEND SEE PLAN NO. S-a-64

NOTE:

Grades to which this improvement is to be constructed are shown on plans and profiles. Grade points for top of curbs, center line of streets, or center line of alleys are shown by circles on profiles. At all points between designated points the grade shall be established so as to conform to a straight line drawn between said designated points.

Elevations are in feet above U.S.G.S. datum or mean sea level.

This drawing and the data hereon are hereby made a part of the specifications.

Work shall be constructed according to specifications on file in the office of the County Engineer and shall be prosecuted only in the presence of the County Engineer.

Before work can be started, the contractor must obtain a permit to excavate in County streets from the L.A. County Road Dept., 108 W. 2nd St. and make a deposit with the County Engineer, 133 L.A. County Engineering Building, sufficient to cover the cost of construction inspection and record plans.

Approval of this plan by the County of Los Angeles does not constitute a representation as to the accuracy of the location of or the existence or non-existence of any underground utility pipe, or structure within the limits of this project. This note applies to all sheets.

If work is to be done in a State Highway, a permit must be obtained from the State of California, Division of Highways, 120 South Spring Street.

COUNTY OF LOS ANGELES, CALIFORNIA

Approved, William J. Fox, County Engineer

Approved, A. M. Rawn

CHIEF ENGR. CO. SAN DIST. NO. 3

Le H. Hughes
Asst. Sanitation Engineer

A. Matthews
Office Engineer

Checked by: *R. K. ...* 10-26-54

Office of County Engineer, Reg. C. E. No. 7860

TRACT N° 19982

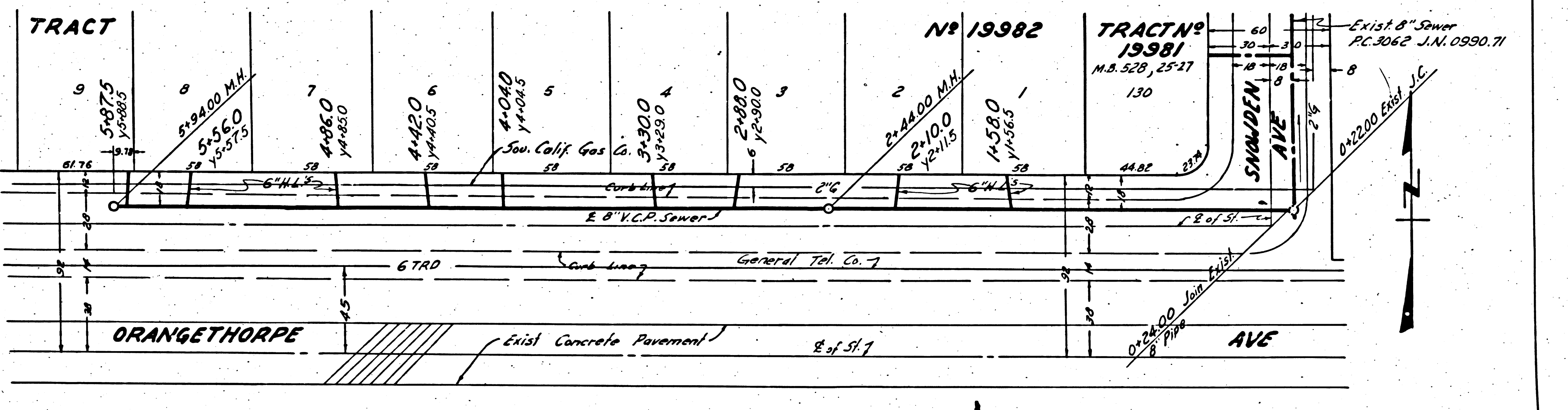
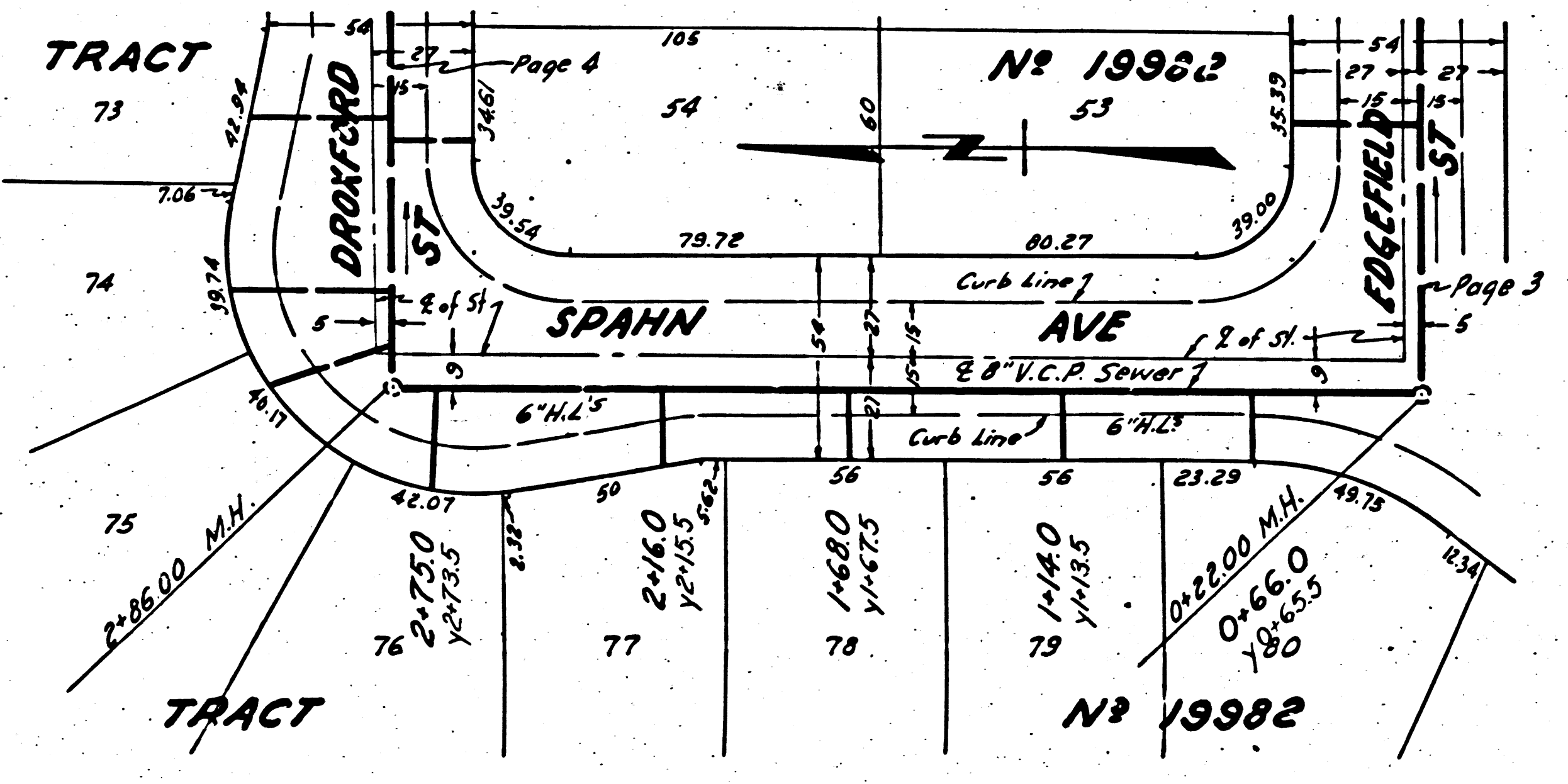
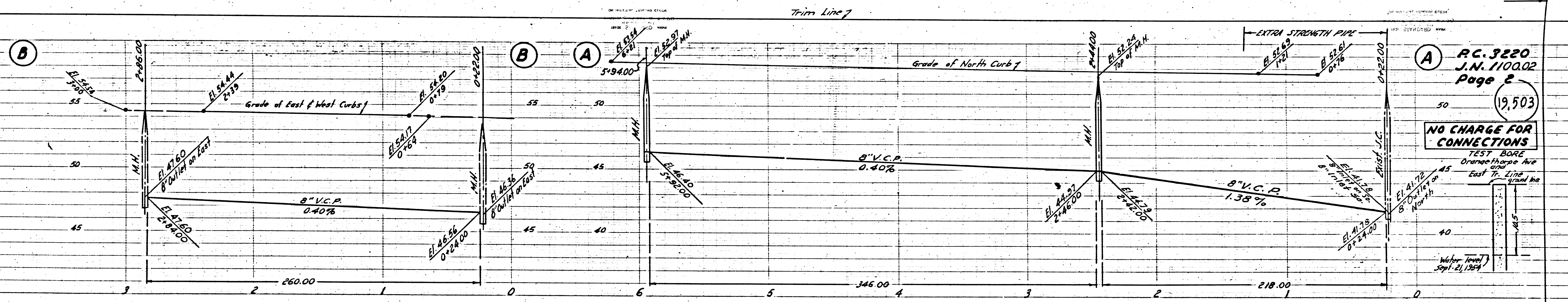
5010-5105

PC 3220
J.N. 1100.02
0555 D

R.B.

Revised 1-3-55 W. Fox

Trim Line

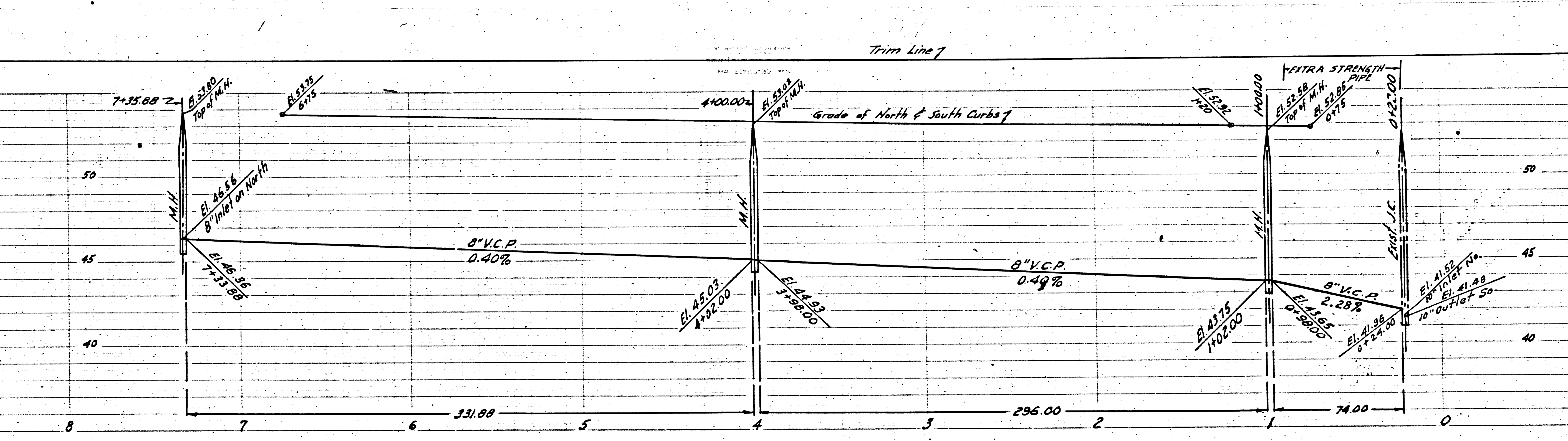
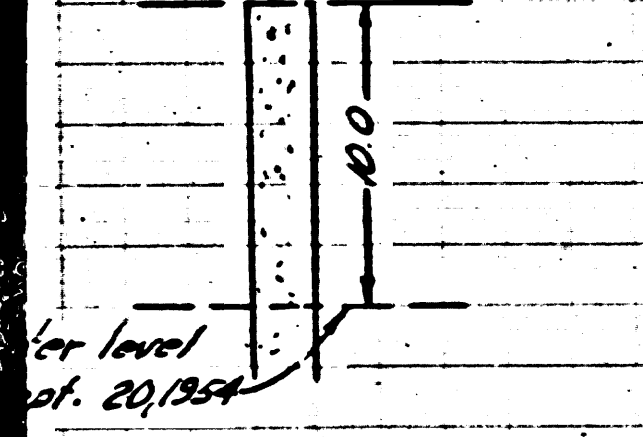


P.C. 3220
J.N. 1100.02
Page 4

19,505

CHARGE FOR
CONNECTIONS

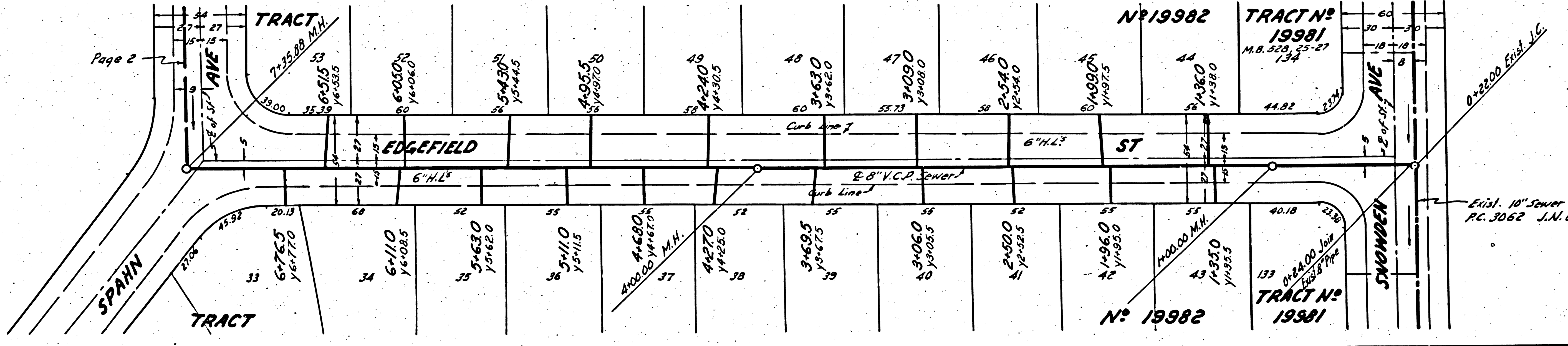
TEST BORING
DRAKFOOD ST. AND
EAST TRACT BOUNDARY



P.C. 3220
J.N. 1100.02
Page 3

19,504

NO CHARGE FOR
CONNECTIONS



P.C. 3062
J.N. 0990.71

10" Sewer

10" Sewer

10" Sewer

10" Sewer

10" Sewer

10" Sewer

10" Sewer

10" Sewer

10" Sewer

10" Sewer

P.C. 3220
J.N. 1100.02
Page 6

19,507

CHARGE FOR CONNECTIONS

TEST BORING ORANGE THROPE LINE & SPANNAIR

Ground surface

10'

10'

10'

10'

10'

10'

10'

10'

10'

10'

10'

10'

10'

10'

10'

10'

10'

10'

10'

10'

10'

10'

10'

10'

10'

10'

10'

10'

10'

10'

10'

10'

10'

10'

10'

10'

10'

10'

Trim Line 1

P.C. 3220
J.N. 1100.02
Page 5

19,506

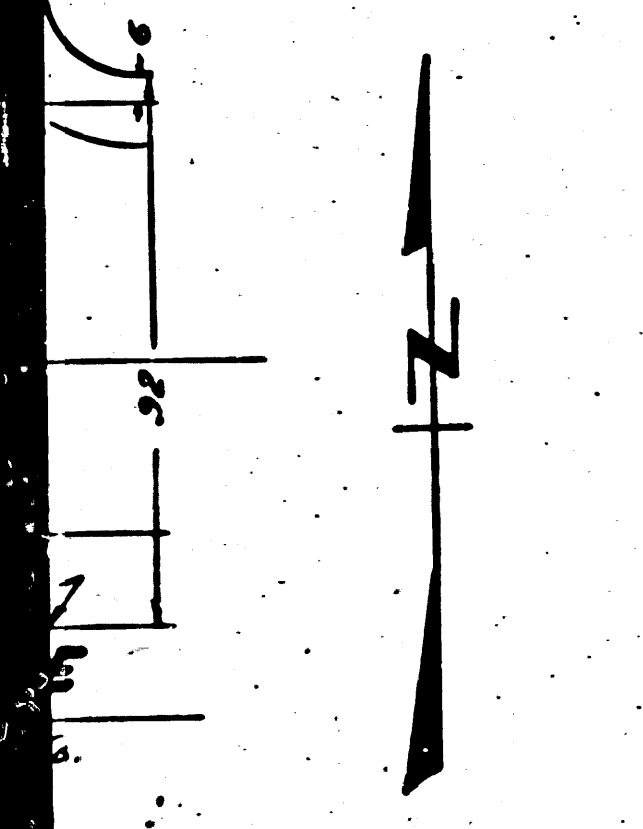
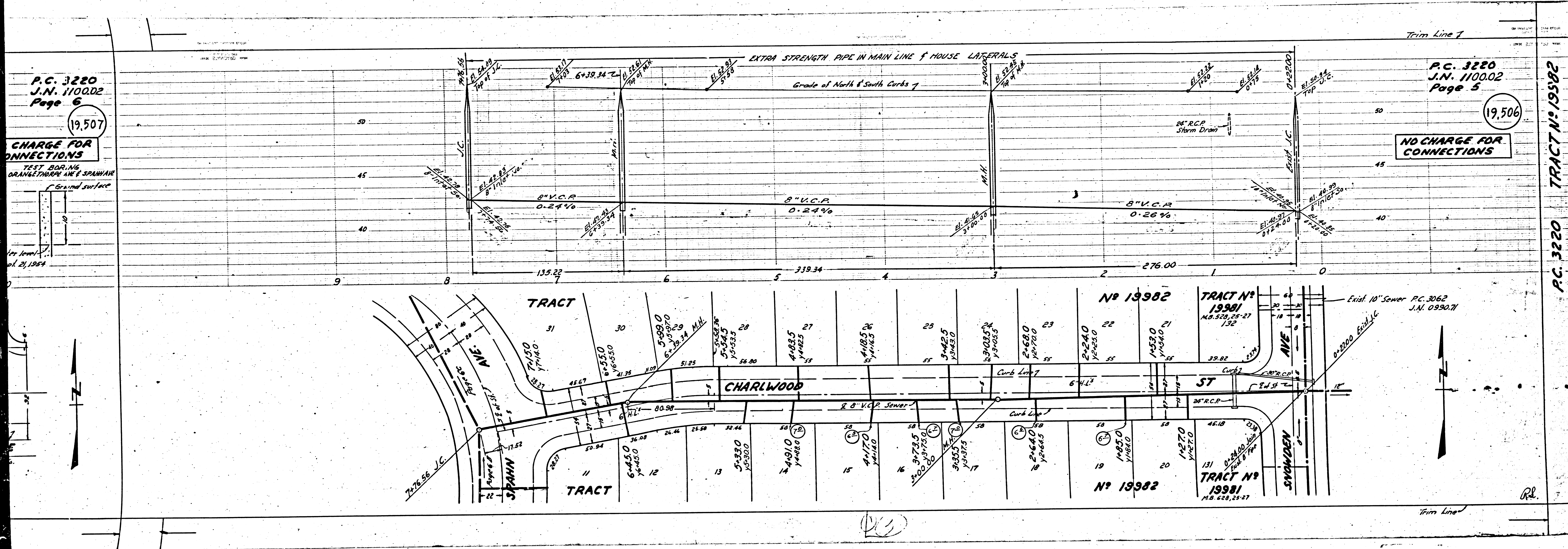
NO CHARGE FOR CONNECTIONS

P.C. 3220
J.N. 1100.02
Page 5

19,506

NO CHARGE FOR CONNECTIONS

P.C. 3220 TRACT N° 19582



10'

10'

10'

Trim Line

10'

10'

10'

10'

10'

10'

10'

10'

10'

10'

10'

10'

10'

10'

10'

10'

10'

10'

10'

10'

10'

10'

10'

10'

10'

10'

10'

10'

10'

10'

10'

10'

10'

10'

10'

10'

10'

10'

10'

10'

10'

10'

10'

10'

10'

10'

10'

10'

10'

10'

10'

10'

10'

10'

10'

10'

10'

10'

10'

10'

10'

10'

10'

10'

10'

10'

10'

10'

10'

10'

10'

10'

10'

10'

10'

10'

10'

10'

10'

10'

10'

10'

10'

10'

10'

10'

10'

10'

10'

10'

10'

10'

10'

10'

10'

10'

10'

10'

10'

10'

10'

10'

10'

10'

10'

10'

10'

10'

10'

10'

10'

10'

10'

10'

10'

10'

10'

10'

10'

10'

10'

10'

10'

10'

10'

10'

10'

10'

10'

10'

10'

10'

10'

10'

10'

10'

10'

10'

10'

10'

10'

10'

10'

10'

10'

10'

10'

10'

10'

10'

10'

10'

10'

10'

10'

10'

10'

10'

10'

10'

10'

10'

10'

10'

10'

10'

10'

10'

10'

10'

10'

10'

10'

10'

10'

10'

10'

10'

10'

10'

10'

10'

10'

10'

10'

10'

10'

10'

10'

10'

10'

10'

10'

10'

10'

10'

10'

10'

10'

10'

10'

10'

10'

10'

10'

10'

10'

10'

10'

10'

10'

10'

10'

10'

10'

10'

10'

10'

10'

10'

10'

10'

10'

10'

10'

10'

10'

10'

10'

10'

10'

10'

10'

10'

10'

10'

10'

10'

10'

10'

10'

10'

10'

10'

10'

10'

10'

10'

10'

10'

10'

10'

10'

10'

10'

10'

10'

10'

10'

10'

10'

10'

10'

10'

10'

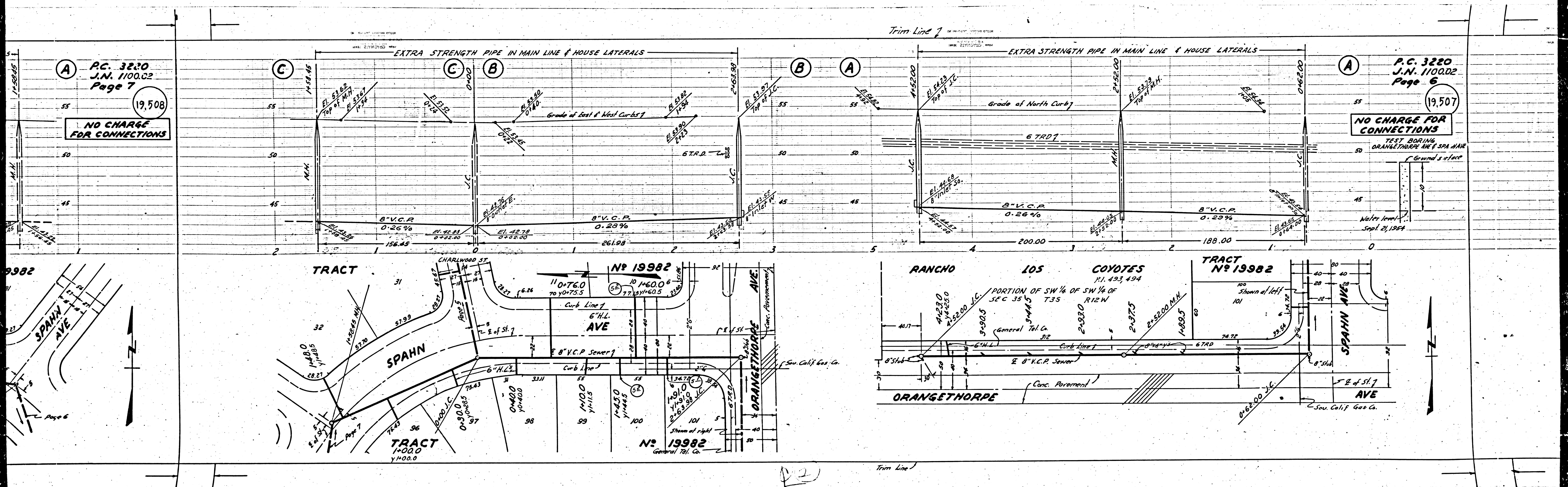
10'

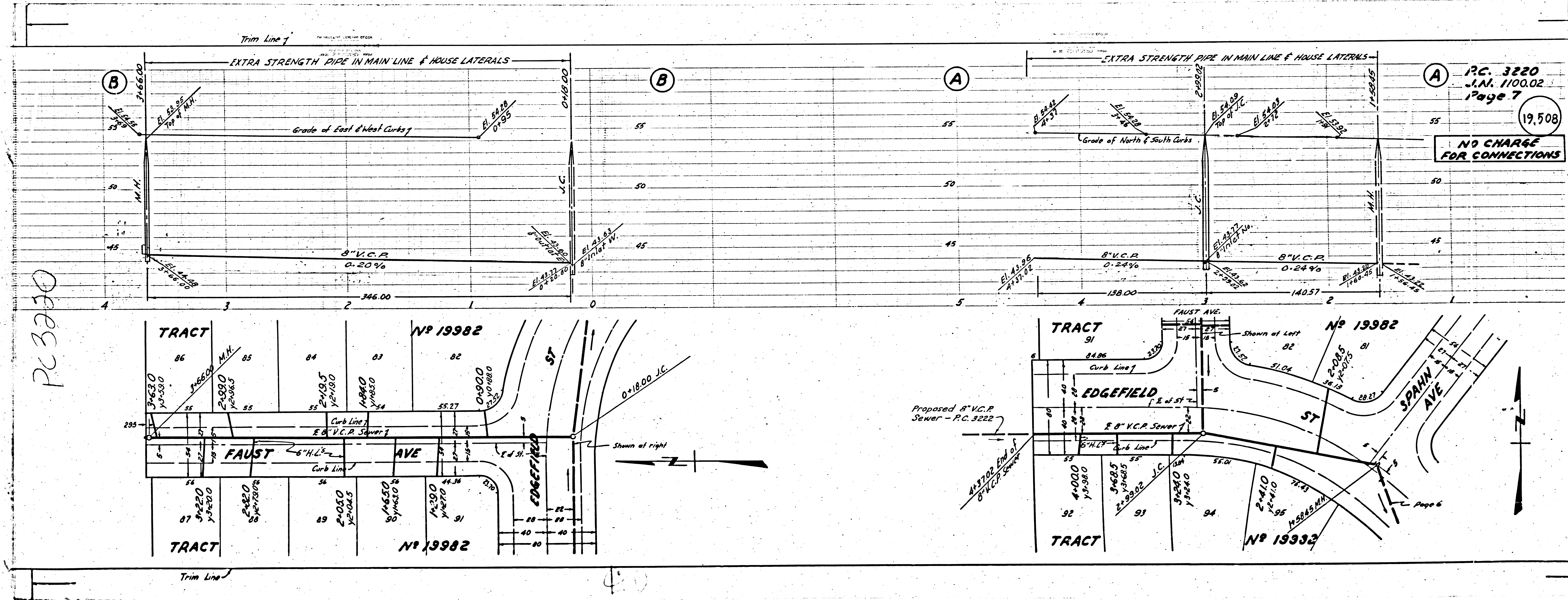
10'

10'

10'

<





PC 3220

PC. 3220
S.N. 1100.02
Page 7

19,508

NO CHARGE FOR CONNECTIONS

Proposed 8" V.C.P. Sewer - P.C. 3222

Page 6