

**NOTE: BELLFLOWER BLDG DIST N° 4**

Provide stakes on the property lines or property lines produced at right angles to the sewer line at the center line of each manhole.

No representative of the County Engineer will survey or layout any portion of the work.

The owner or his authorized representative shall furnish the County Engineer with grade sheets and stations for all house laterals and Y branches and shall provide stakes for them at their proper locations with stationing plainly marked. Any change in location shall be requested in writing by the owner or his representative.

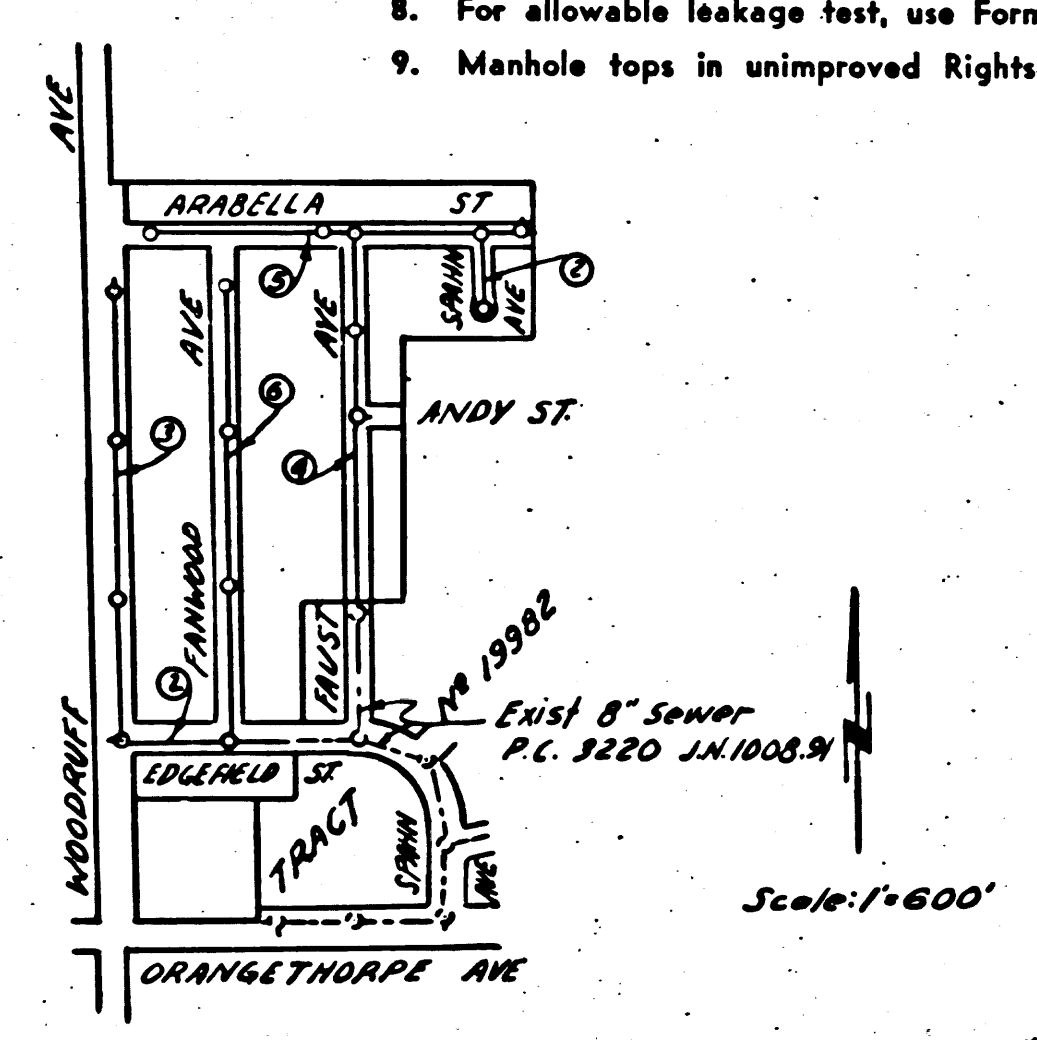
No revisions shall be made in these plans without the approval of the County Engineer.

1. Use standard manhole frames and covers, S-a-117.
2. Use standard strength pipe except as noted.
3. Use joint compound for all vitrified clay pipe joints per specs, sec. 31
4. Resurface all trench within paved area to meet L.A. County Road Dept. or California State Highway Dept. requirements in accordance with permit.
5. Encase four feet of sewer at points of interference with poles, S-a-119.
6. House laterals to be constructed with inverts at property line 5 feet below curb grade except as noted.
7. All structures shall be brick sewer structures, S-a-104.
8. For allowable leakage test, use Formula No. 2 Spec's, Sec. 51.
9. Manhole tops in unimproved Rights-Of-Way to be 6" above finish grade.

B.M. SY 755 E1-54.314 200' spt in conc. pmt  
14' S. of E. of Orangethorpe Ave. + 70' E. of E. of  
Woodruff Ave. Add 005 to all E.S. herein to be on 784 adj.

Revised grades checked  
By: P.R. K... 1-11-55  
Office of the County Engineer, Reg. C.E. No. 7860

SHEETS	PAGES
1	1-3
2	4-6



INDEX MAP  
TRACT N° 18438  
P.C. 3222 J.N. 1009.11

**NO CHARGE FOR CONNECTIONS**  
*10-30-54*

*checked 1-3-55 M. Kern*

PROFILE, ALIGNMENT AND GRADE OF  
**SANITARY SEWERS**  
TO BE CONSTRUCTED IN  
**TRACT N° 18438**

PRIVATE CONTRACT NO. 3222  
W. S. 31  
TWO SHEETS

Scale: VERT. 1"=4'  
HORIZ. 1"=40'

OCT. 1954  
PREPARED IN THE OFFICES OF

**BARCLAY SURVEYING COMPANY**  
*G.P. B...*  
Reg. C.E. No. 1137

FOR LEGEND SEE PLAN NO. S-a-64

P.C. 3222  
J.N. 1100.02  
Page 1

19,509

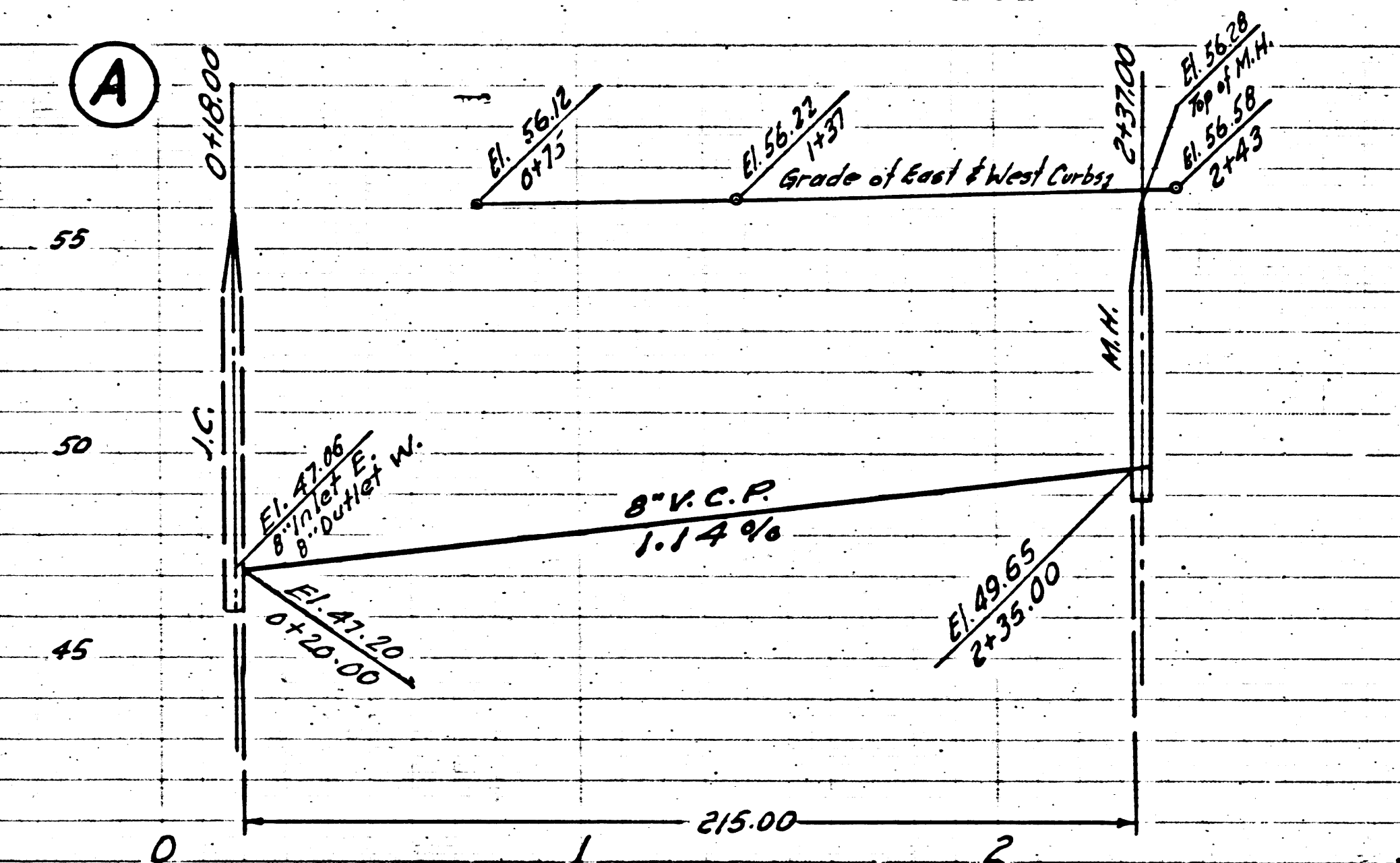
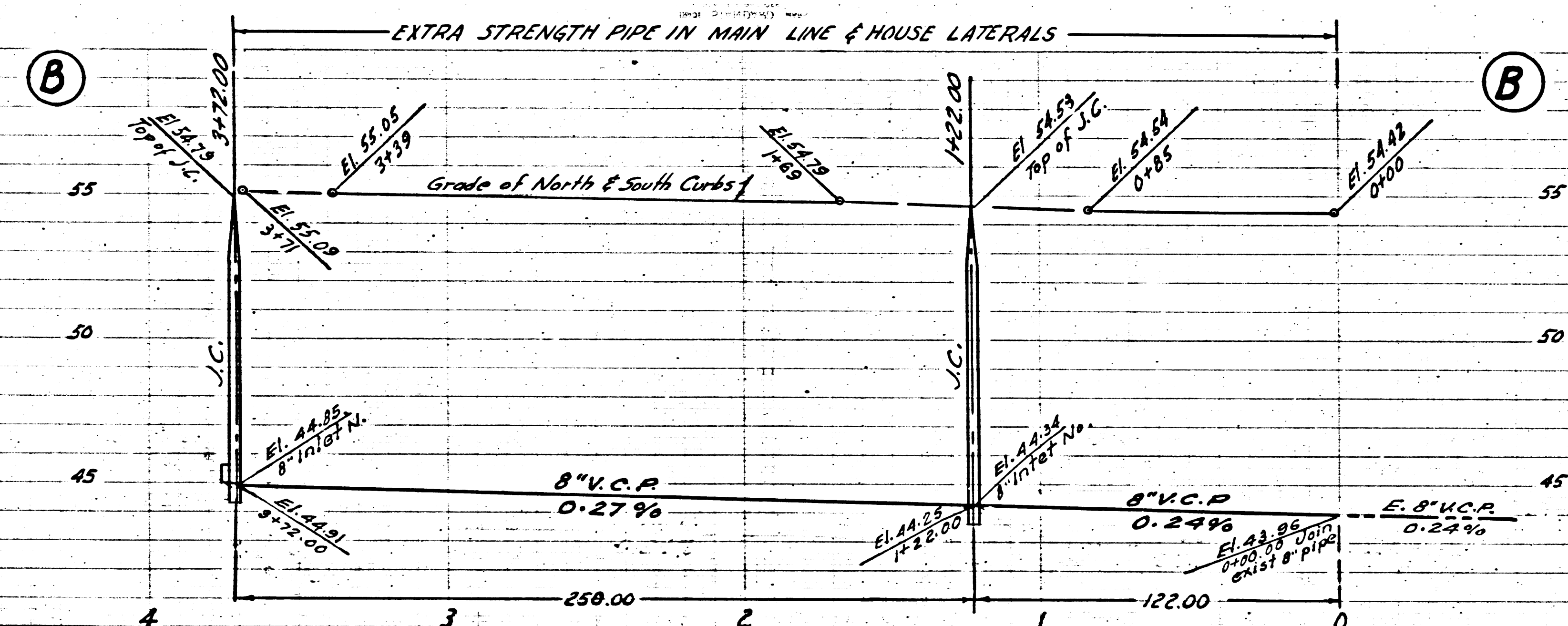
**NOTE:**  
Grades to which this improvement is to be constructed are shown on plans and profiles. Grade points for top of curbs, center line of streets, or center line of alleys are shown by circles on profiles. At all points between designated points the grade shall be established so as to conform to a straight line drawn between said designated points.  
Elevations are in feet above U.S.G.S. datum or mean sea level.  
This drawing and the data hereon are hereby made a part of the specifications.  
Work shall be constructed according to specifications on file in the office of the County Engineer and shall be prosecuted only in the presence of the County Engineer.  
Before work can be started, the contractor must obtain a permit to excavate in County streets from the L.A. County Road Dept., 108 W. 2nd St. and make a deposit with the County Engineer, 733 L.A. County Engineering Building, sufficient to cover the cost of construction inspection and record plans.  
Approval of this plan by the County of Los Angeles does not constitute a representation as to the accuracy of the location of or the existence or non-existence of any underground utility, pipe, or structure within the limits of this project. This note applies to all sheets.  
If work is to be done in a State Highway, a permit must be obtained from the State of California, Division of Highways, 120 South Spring Street.

**COUNTY OF LOS ANGELES, CALIFORNIA**  
Approved, William J. Fox, County Engineer  
Approved, A. M. Rawn, CHIEF ENGR. CO. SAN. DIST. NO. 3  
*A.P. Williams* *J. P. Williams*  
Sanitation Engineer Office Engineer  
Checked by: *P.R. K...* 11-24-54  
Office of County Engineer, Reg. C.E. No. 7860.

P.C. 3222 TRACT N° 18438  
10,0011 N.W. 507-18-ams  
C.S.S.S.

Trim Line

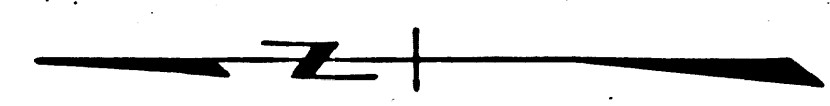
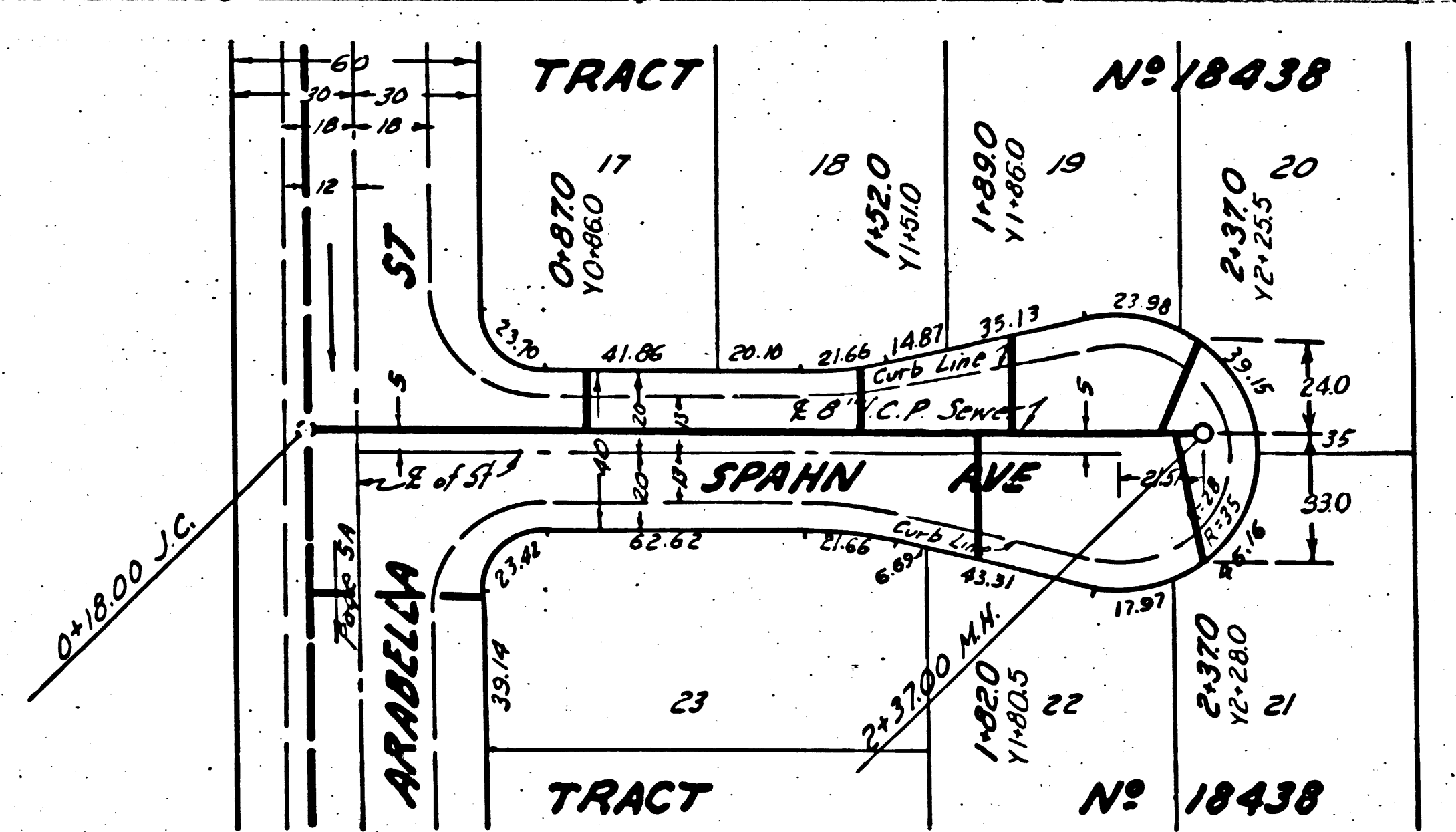
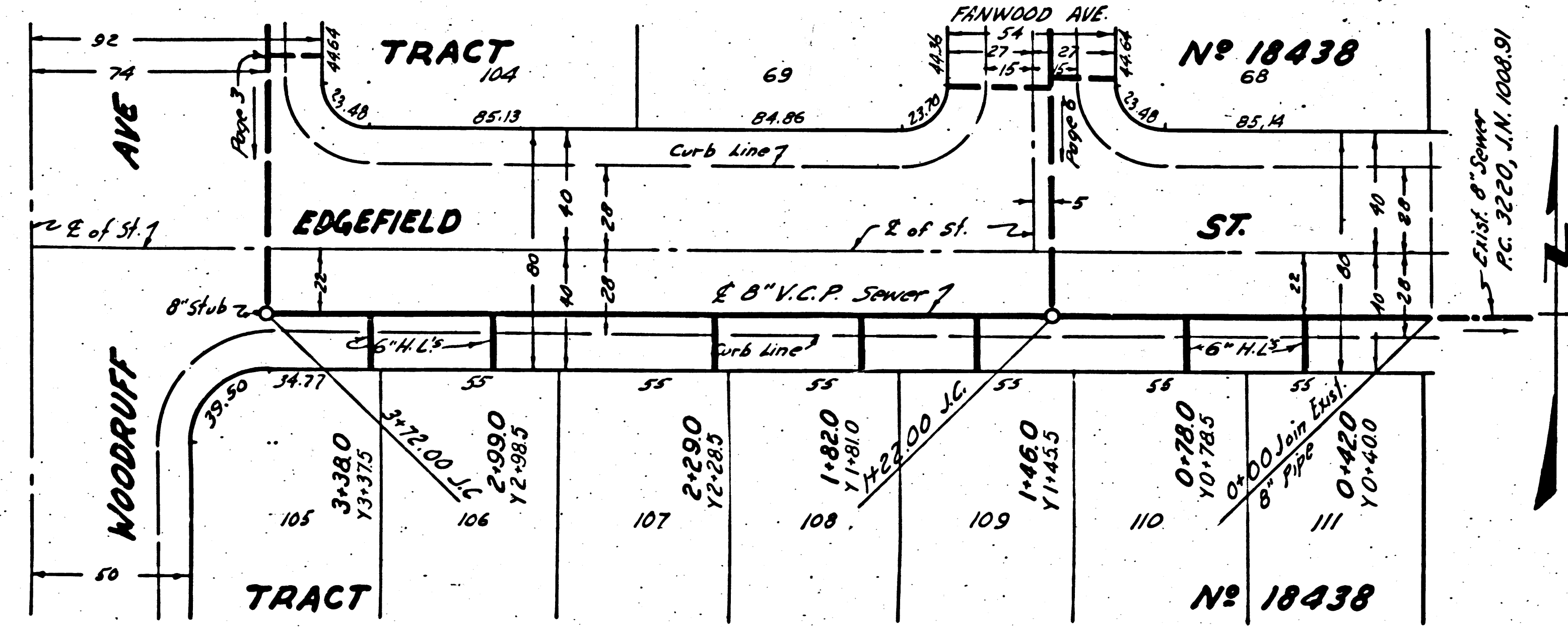




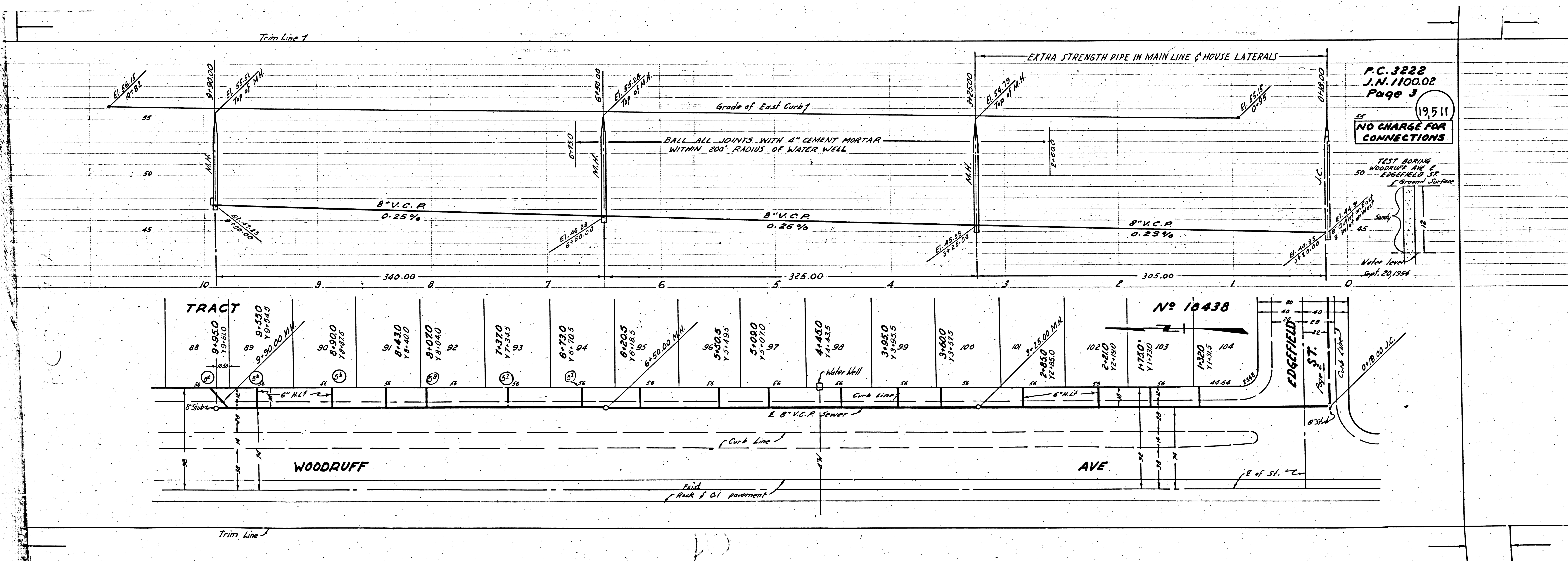
P.C. 3222  
 J.N. 1100.02  
 Page 2

NO CHARGE FOR CONNECTIONS

19,510







P.C. 3222  
 J.N. 1100.02  
 Page 3  
 1951  
 NO CHARGE FOR CONNECTIONS  
 TEST BORING  
 WOODRUFF AVE & EDGFIELD ST  
 Ground Surface  
 Sandy  
 Water Level  
 Sept. 20, 1954

TRACT	Lot	Area (S)	Area (N)	Area (T)
TRACT	88	9,495.0	19,840.0	
	89	9,550.0	19,945.0	
	90	8,000.0	18,075.0	
	91	8,430.0	18,460.0	
	92	9,070.0	19,040.0	
	93	7,370.0	17,345.0	
	94	6,750.0	16,705.0	
	95	6,205.0	16,185.0	
	96	9,505.0	19,435.0	
	97	5,090.0	13,070.0	
TRACT	98	4,450.0	14,435.0	
	99	3,950.0	13,985.0	
	100	3,680.0	13,935.0	
	101	2,450.0	12,650.0	
	102	2,810.0	12,180.0	
	103	1,750.0	11,230.0	
104	1,320.0	11,135.0		

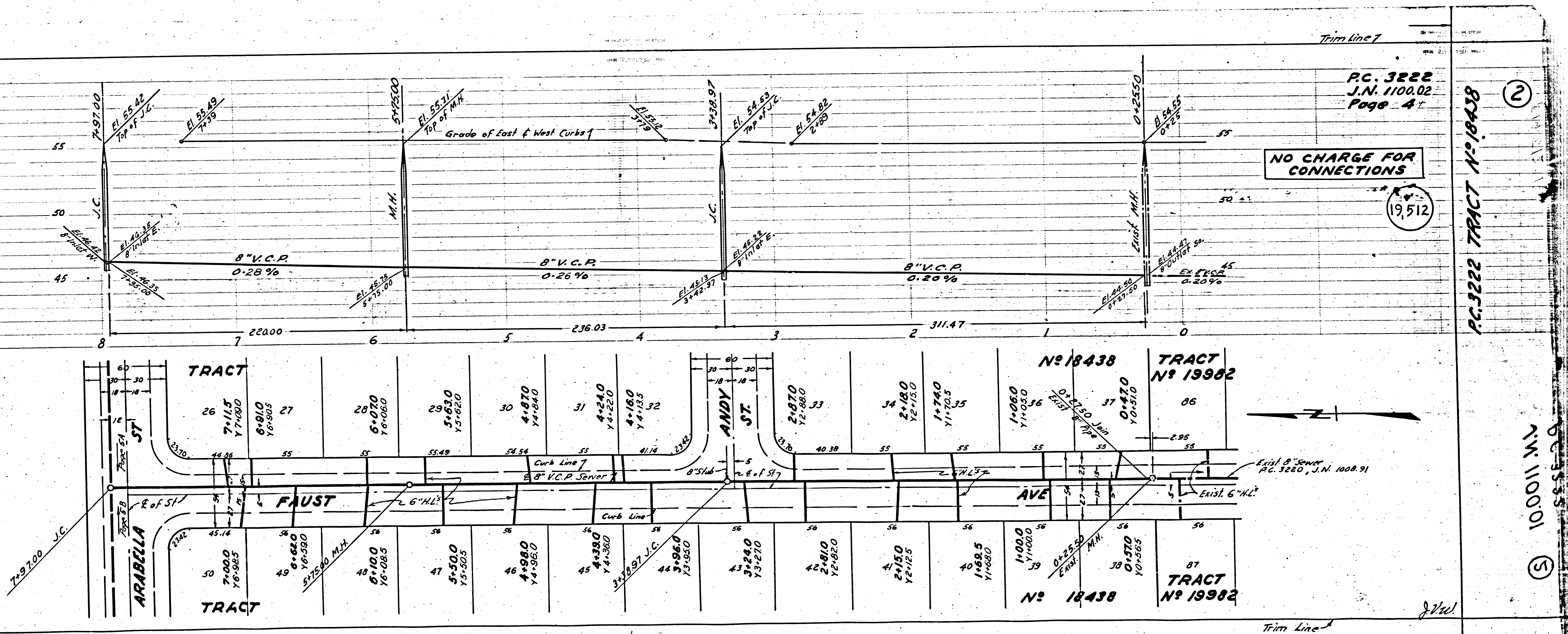
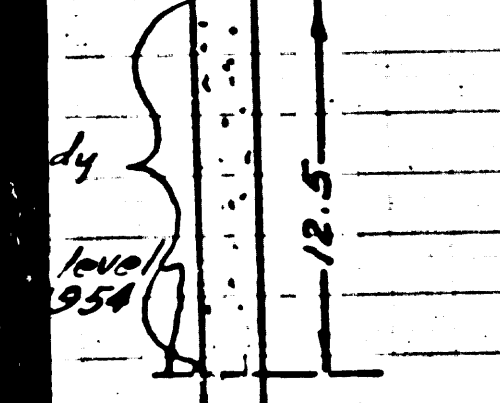


P.C. 3222  
J.N. 1100.02  
Page 5

19,513

NO CHARGE FOR CONNECTIONS

TEST BORING  
ARABELLA ST & East  
Tract Boundary  
Ground Surface



P.C. 3222  
J.N. 1100.02  
Page 4

NO CHARGE FOR CONNECTIONS

19,512

P.C. 3222 TRACT N° 18438 (2)

N.W. 100.01 (S)

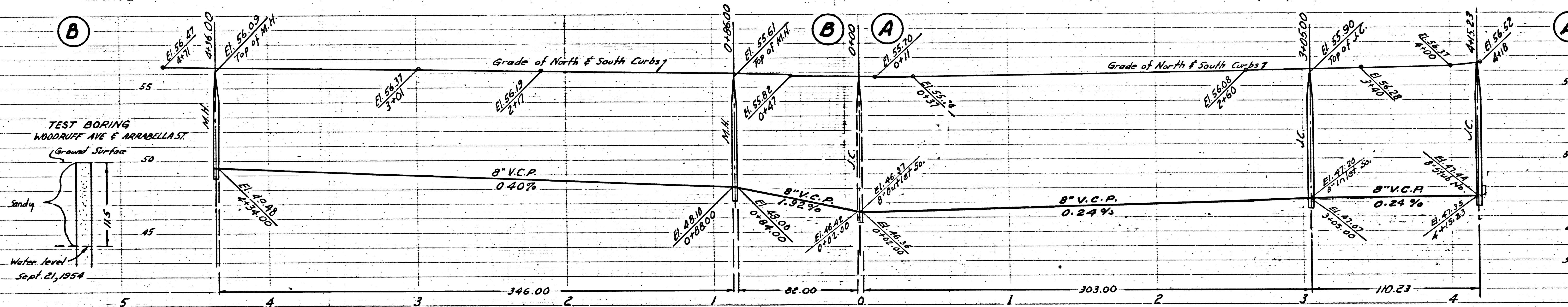
J.W.



P.C. 3222  
J.N. 1100.02  
Page 6

19,514

NO CHARGE FOR CONNECTIONS

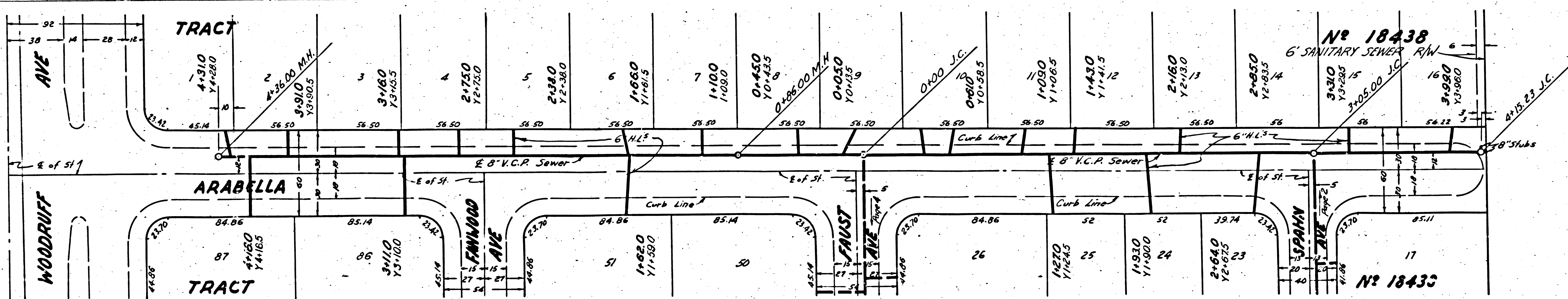
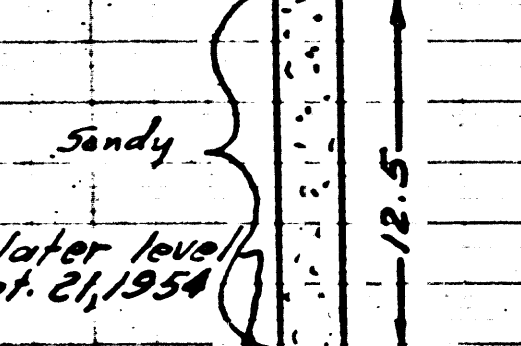


P.C. 3222  
J.N. 1100.02  
Page 5

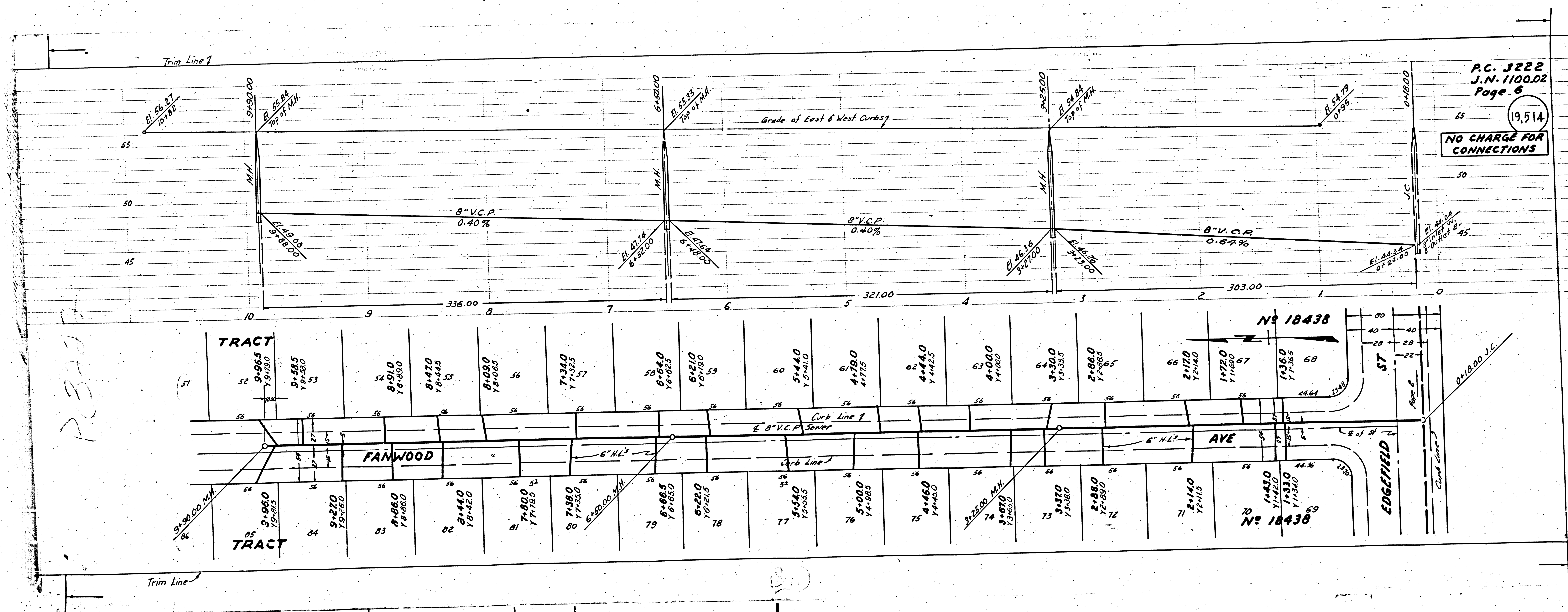
19,513

NO CHARGE FOR CONNECTIONS

TEST BORING  
ARABELLA ST. East  
Front Boundary  
Ground Surface







P.C. 3222  
 J.N. 1100.02  
 Page 6  
 19,514  
 NO CHARGE FOR CONNECTIONS

REBUILT

Station	Point	Elevation	Notes
9+96.5	Y9+96.5	99.280	
9+58.5	Y9+58.5	99.280	
8+91.0	Y8+91.0	98.290	
8+47.0	Y8+47.0	98.445	
8+03.0	Y8+03.0	98.665	
7+34.0	Y7+34.0	97.325	
6+64.0	Y6+64.0	96.655	
6+21.0	Y6+21.0	96.180	
5+44.0	Y5+44.0	95.910	
4+79.0	Y4+79.0	94.775	
4+44.0	Y4+44.0	94.425	
4+00.0	Y4+00.0	94.020	
3+30.0	Y3+30.0	93.355	
2+86.0	Y2+86.0	92.965	
2+17.0	Y2+17.0	92.140	
1+72.0	Y1+72.0	91.620	
1+36.0	Y1+36.0	91.365	
0+180.0	J.C.	89.464	
9+06.0	Y9+06.0	99.910	
9+27.0	Y9+27.0	99.760	
8+96.0	Y8+96.0	98.960	
8+44.0	Y8+44.0	98.420	
7+80.0	Y7+80.0	97.795	
7+38.0	Y7+38.0	97.350	
6+65.0	Y6+65.0	96.650	
6+22.0	Y6+22.0	96.210	
5+54.0	Y5+54.0	95.385	
5+00.0	Y5+00.0	94.985	
4+46.0	Y4+46.0	94.450	
3+87.0	Y3+87.0	93.820	
3+37.0	Y3+37.0	93.380	
2+88.0	Y2+88.0	92.950	
2+14.0	Y2+14.0	92.115	
1+43.0	Y1+43.0	91.420	
1+33.0	Y1+33.0	91.360	

N<sup>o</sup> 18438

N<sup>o</sup> 18438

TRACT

TRACT

FANWOOD

AVE

EDGFIELD ST

0+180.0 J.C.