

P.C. 3227
PAGE 2

COLLECT CHARGES
AS INDICATED

21,018

VERT. 1"=4'
HORIZ. 1"=40'

EXIST. 24" TRUNK
SEWER
SAN. DIST. NO. 22

0.200 EXIST. A.C.

Boundary City of Coma

Boundary City of Coma

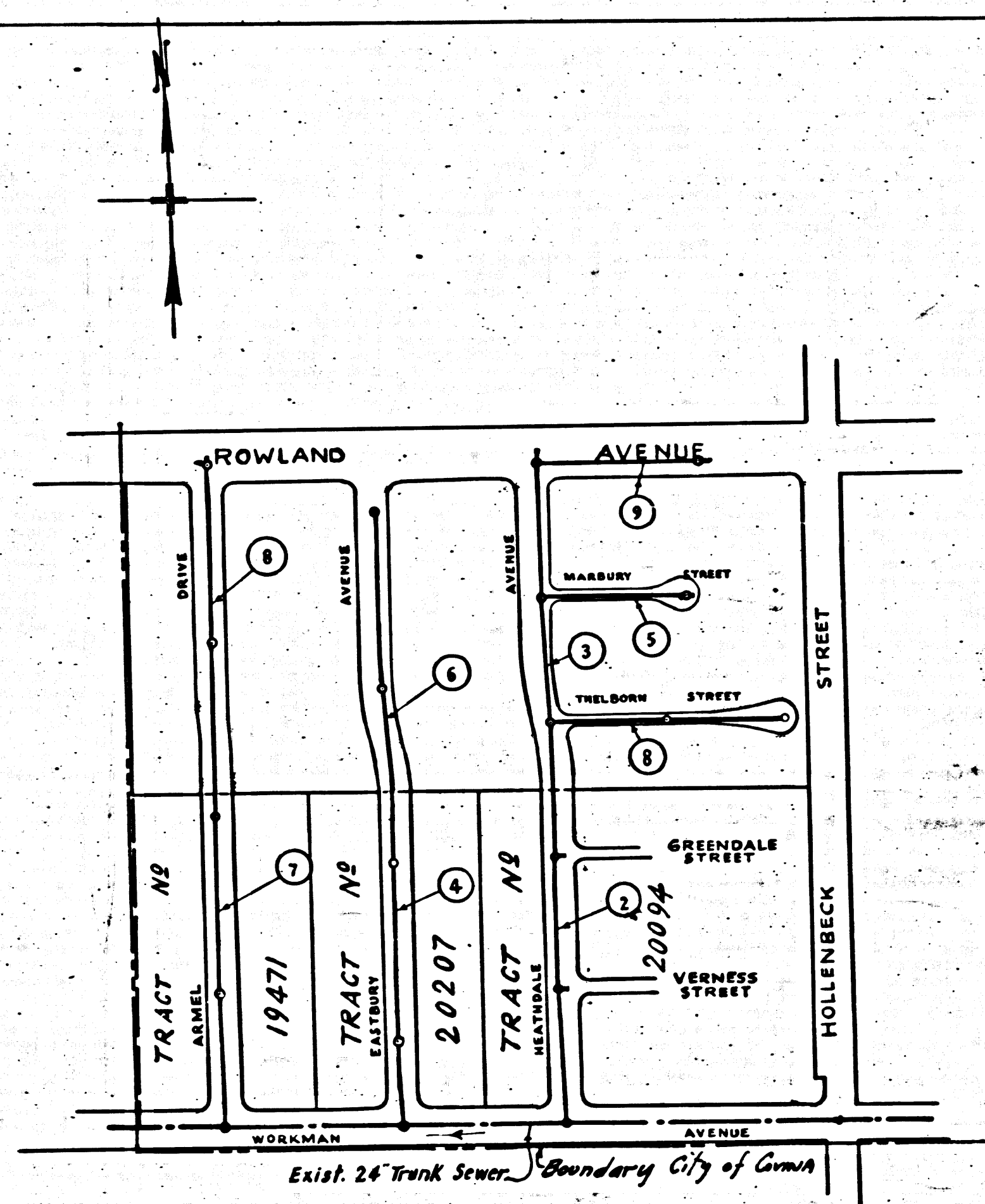
Boundary City of Coma

Boundary City of Coma

Boundary City of Coma

Boundary City of Coma

Boundary City of Coma



SHEETS	PAGES
1	1-5
2	6-9

KEY MAP
SCALE: 1"=300'
P.C. 3227
TRACT NO. 20688

checked 7-28-55 W. Green

SAN DIMAS BLDG. DIST. NO. 10.

- NOTE:**
Provide stakes on the property lines or property lines produced at right angles to the sewer line at the center line of each manhole.
No representative of the County Engineer will survey or layout any portion of the work.
The owner or his authorized representative shall furnish the County Engineer with grade sheets and stations for all house laterals and Y branches and shall provide stakes for them at their proper locations with stationing plainly marked. Any change in location shall be requested in writing by the owner or his representative.
No revisions shall be made in these plans without the approval of the County Engineer.
1. Use standard manhole frames and covers, S-a-117.
 2. Use standard strength pipe except as noted.
 3. Use cement mortar for all vitrified clay pipe joints.
 4. Resurface all trench within paved area to meet L.A. County Road Dept. or California State Highway Dept. requirements in accordance with permit.
 5. Encase four feet of sewer at points of interference with poles, S-a-119.
 6. House laterals to be constructed with inverts at property line _____ feet below curb grade except as noted.
 7. All structures shall be brick sewer structures, S-a-104.
 8. For allowable leakage test, use Formula No. _____, Spec's., Sec. 51.
 9. Manhole tops in unimproved Rights-Of-Way to be 6" above finish grade.
- Before breaking into any existing structures
and before final acceptance of this work,
County Sanitation District should be notified
in order that required inspection may be made.

BENCH MARK T-B Elev. 481.91
Leah and TacK 1 ft. South of B.C.R.
in Curb on Southwest Corner of
Hollenbeck St. and Workman Ave.

COLLECT CHARGES
AS INDICATED.
L. Austin 2-13-55

Revisions of Curb Grades and Sewer
Grades in Marybry St. and Theborn St. (Pages 5 & 8)
CHECKED BY [Signature] 6-24-55
Office of County Engr., Reg. C. E. No. 7260

PROFILE, ALIGNMENT AND GRADE OF
SANITARY SEWERS
TO BE CONSTRUCTED IN

TRACT NO. 20688

PRIVATE CONTRACT NO. 3227
W. S. 47
SHEET 1 OF 2 SHEETS

Scale: VERT. 1"=4'
HORIZ. 1"=40'
JAN., 1955

PREPARED IN THE OFFICES OF
HAROLD M. TEGART

[Signature] 4/1/55
Reg. C. E. No. 3151

FOR LEGEND SEE PLAN NO. S-a-64

NOTE:
Grades to which this improvement is to be constructed are shown on plans and profiles. Grade points for top of curbs, center line of streets, or center line of alleys are shown by circles on profiles. At all points between designated points the grade shall be established so as to conform to a straight line drawn between said designated points.
Elevations are in feet above U.S.G.S. datum or mean sea level.
This drawing and the data hereon are hereby made a part of the specifications.
Work shall be constructed according to specifications on file in the office of the County Engineer and shall be prosecuted only in the presence of the County Engineer.
Before work can be started, the contractor must obtain a permit to excavate in County streets from the L.A. County Road Dept., 108 W. 2nd St. and make a deposit with the County Engineer, \$250.00, sufficient to cover the cost of construction inspection and record plans.
Approval of this plan by the County of Los Angeles does not constitute a representation as to the accuracy of the location of or the existence or non-existence of any underground utility, pipe, or structure within the limits of this project. This note applies to all sheets.
If work is to be done in a State Highway, a permit must be obtained from the State of California, Division of Highways, 120 South Spring Street.

COUNTY OF LOS ANGELES, CALIFORNIA
Approved, William J. Fox, County Engineer
Approved, A. M. Rawm
CHIEF ENGR. CO. SAN. DIST. NO. 22
[Signature] [Signature]
Sanitation Engineer Office Engineer
Checked by [Signature] 4-13-55
Office of County Engineer, Reg. C. E. No. 7260

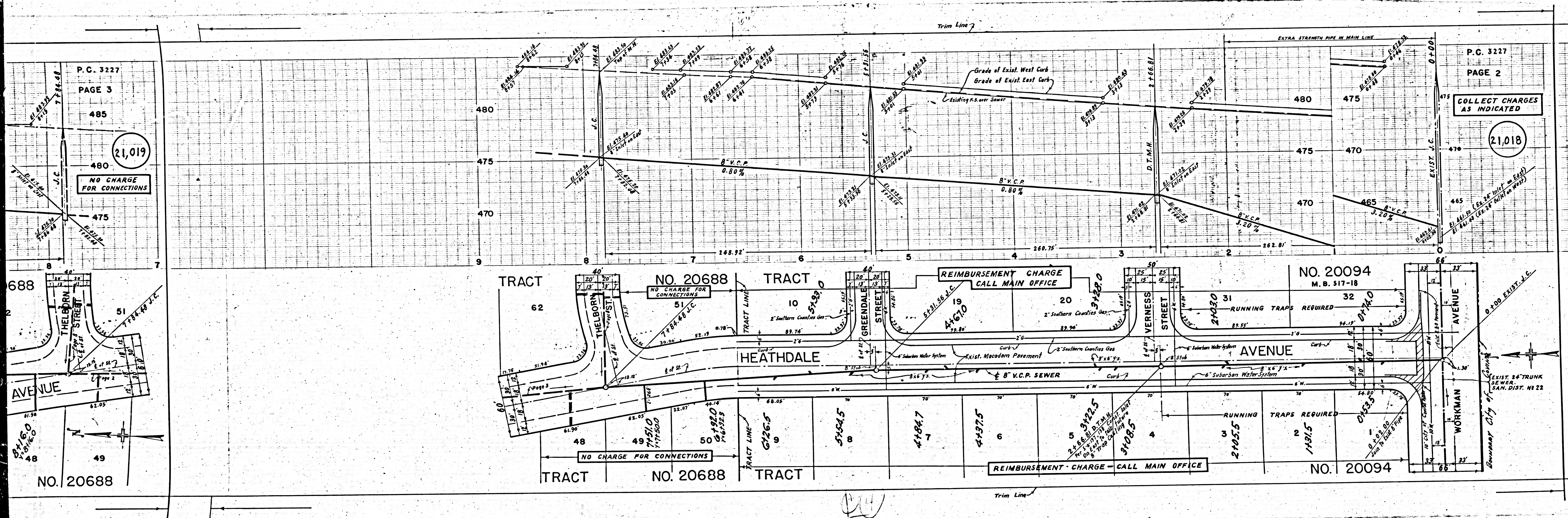
P.C. 3227
PAGE 1

21,017

TRACT NO. 20688

P.C. 3227
PAGE 1

1



P.C. 3227
PAGE 3

(21,019)

NO CHARGE FOR CONNECTIONS

P.C. 3227
PAGE 2

COLLECT CHARGES AS INDICATED

(21,018)

TRACT NO. 20688

TRACT NO. 20094
M.B. 517-18

HEATHDALE AVENUE

WORKMAN AVENUE

TRACT NO. 20688

TRACT NO. 20094

NO CHARGE FOR CONNECTIONS

REIMBURSEMENT CHARGE CALL MAIN OFFICE

RUNNING TRAPS REQUIRED

RUNNING TRAPS REQUIRED

EXIST. 24\"/>

SEWER MAIN, DIST. NO. 22

Boundary City of Quincy

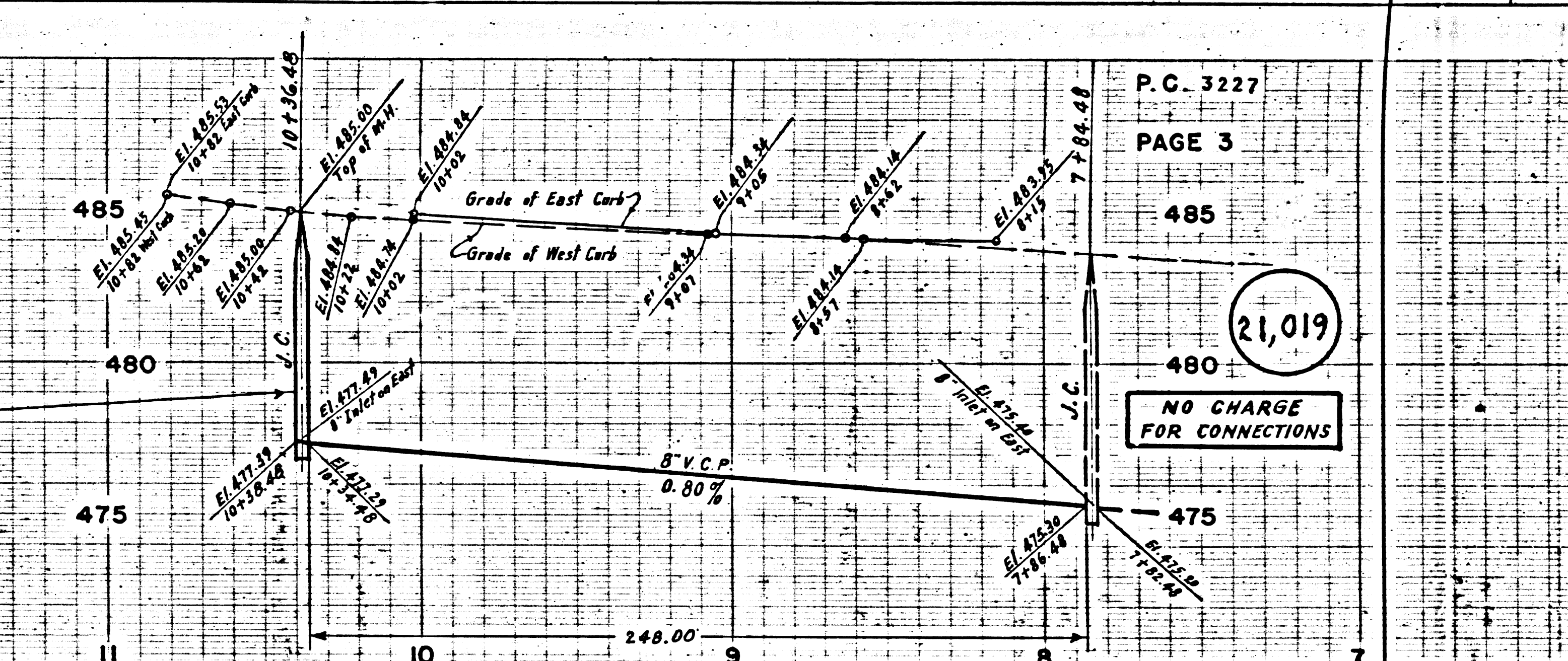
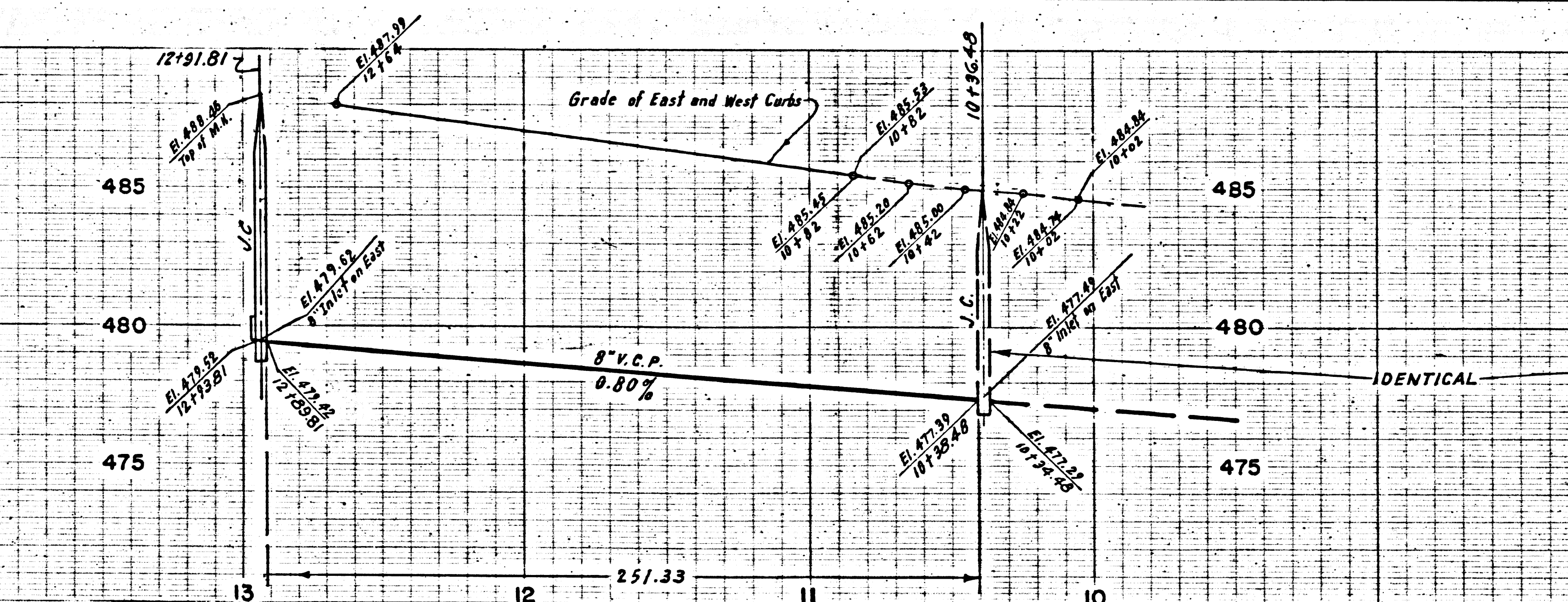
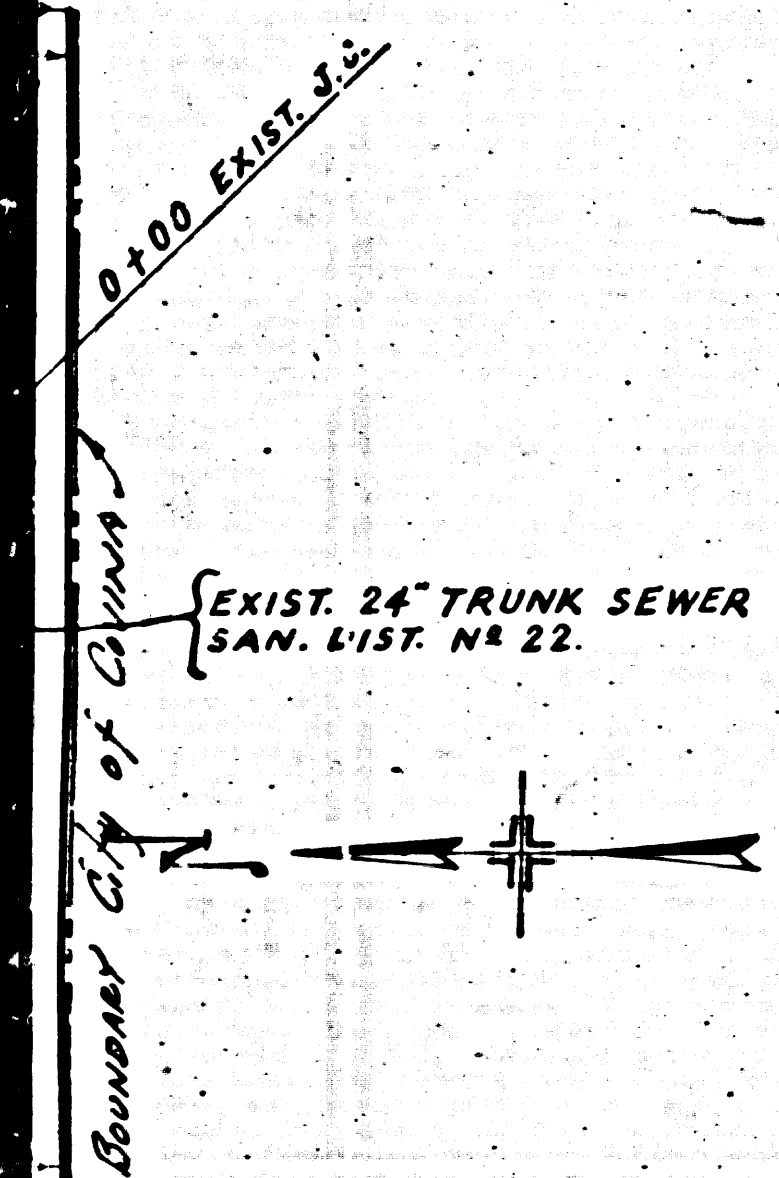
Handwritten initials 'CJ'

P.C. 3227
PAGE 4

COLLECT CHARGES
AS INDICATED

21,020

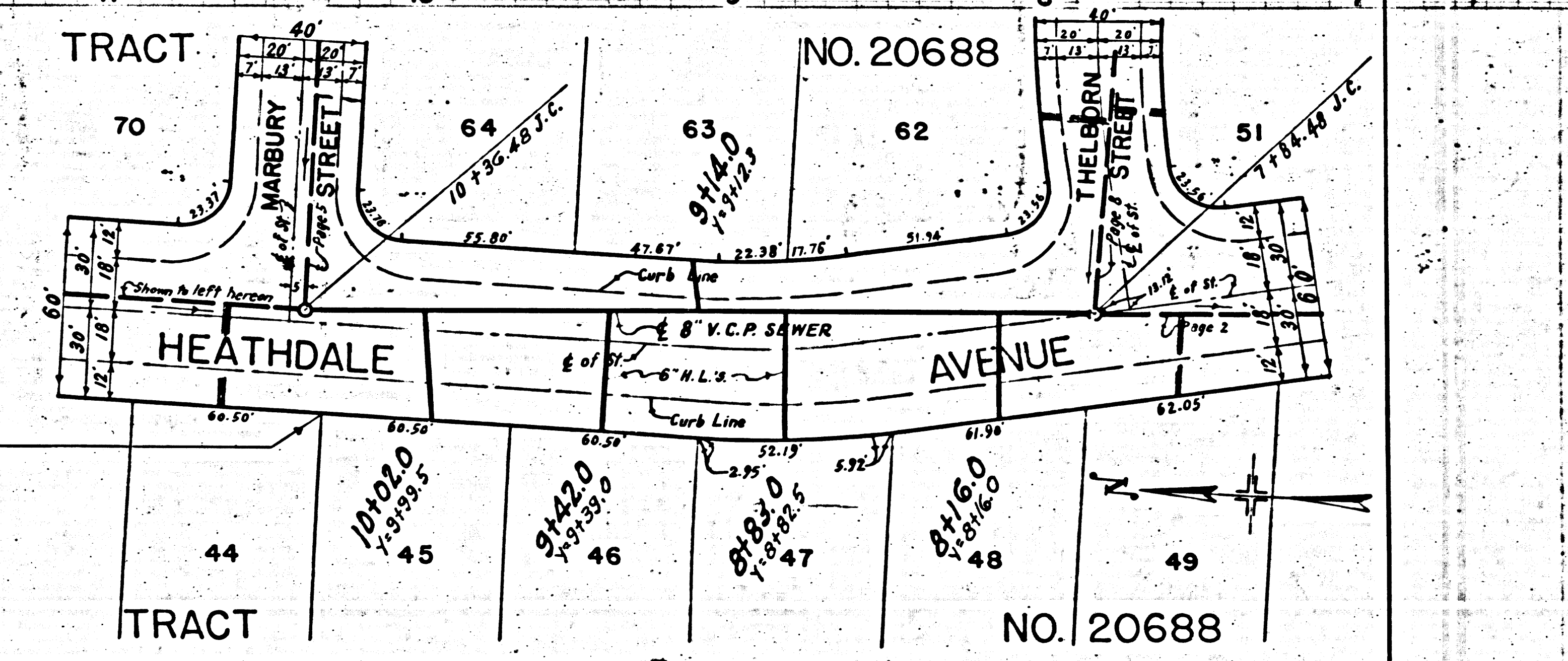
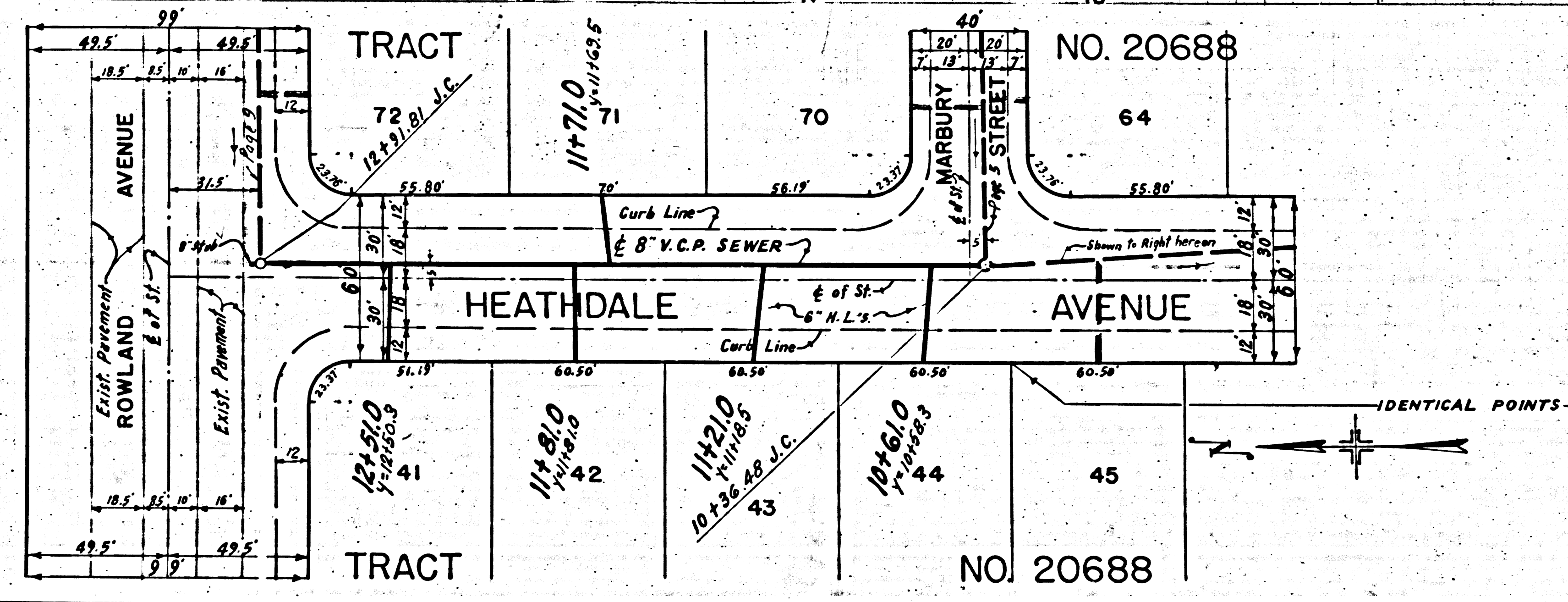
SS
12.5' (Existing on East)
17.5' (New on West)



21,019

NO CHARGE
FOR CONNECTIONS

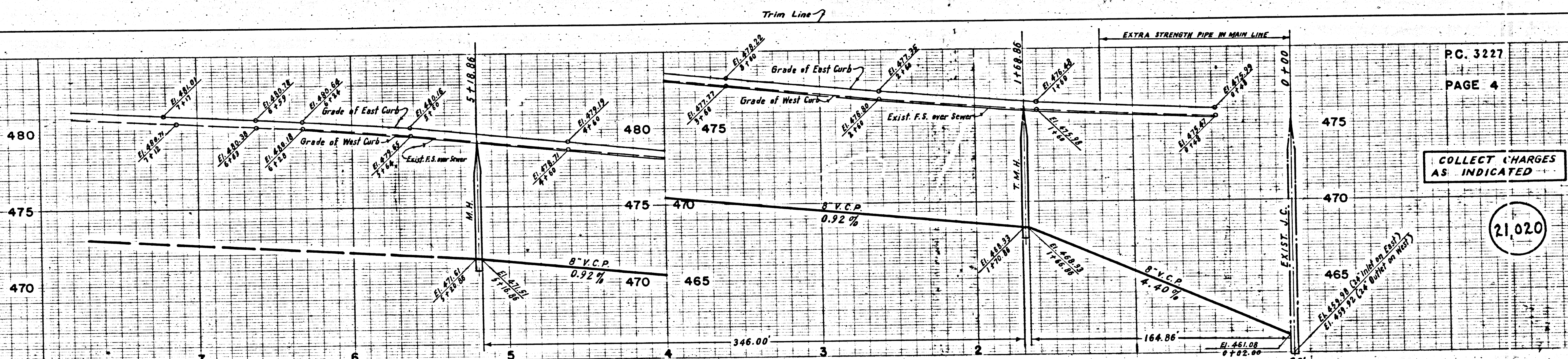
P.C. 3227
PAGE 3



213

NO CHARGE FOR CONNECTIONS

21,021

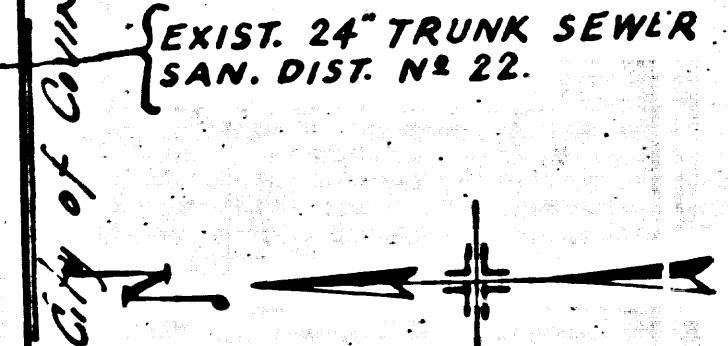
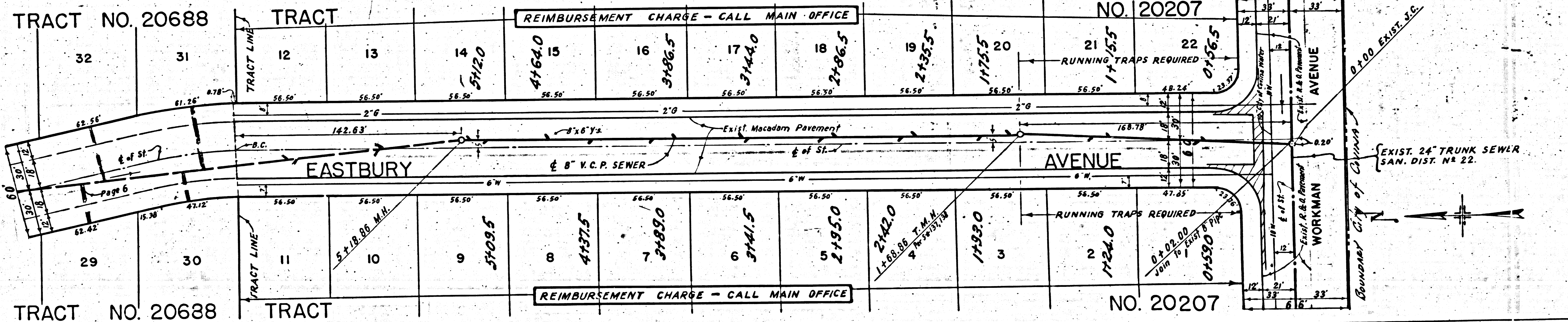


COLLECT CHARGES AS INDICATED

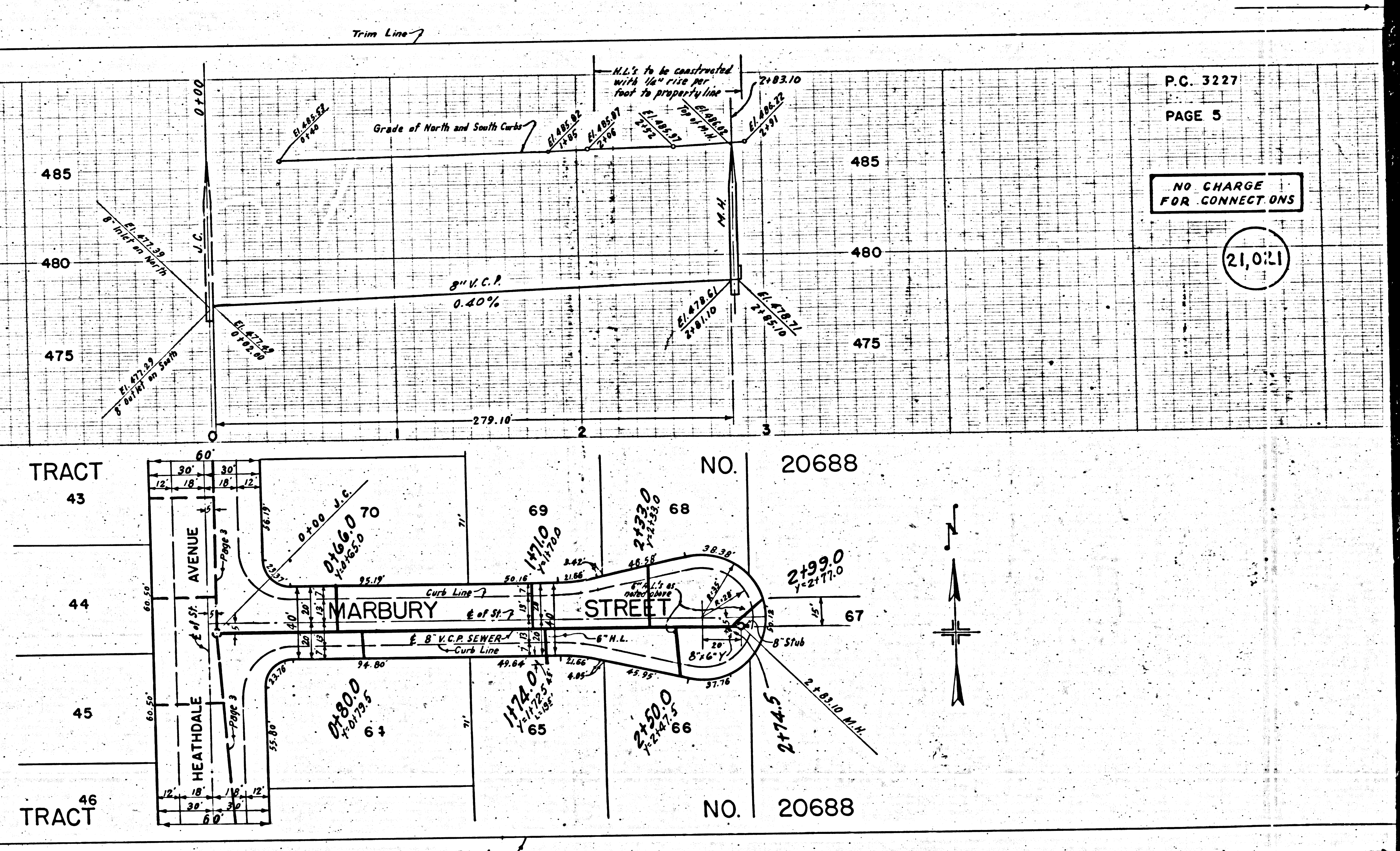
21,020

TRACT NO. 20688		TRACT										TRACT NO. 20207	
32	31	12	13	14	15	16	17	18	19	20	21	22	
		REIMBURSEMENT CHARGE - CALL MAIN OFFICE											
		5120	4764.0	3456.5	3144.0	2786.5	2429.0	2071.5	1714.0	1356.5	RUNNING TRAPS REQUIRED		
		5120	4764.0	3456.5	3144.0	2786.5	2429.0	2071.5	1714.0	1356.5	0106.5		
29	30	11	10	9	8	7	6	5	4	3	2	1	
		REIMBURSEMENT CHARGE - CALL MAIN OFFICE											
		5109.5	4777.5	3489.0	3176.5	2864.0	2551.5	2139.0	1726.5	1314.0	RUNNING TRAPS REQUIRED		
		5109.5	4777.5	3489.0	3176.5	2864.0	2551.5	2139.0	1726.5	1314.0	01580.0		

TRACT NO. 20688 TRACT REIMBURSEMENT CHARGE - CALL MAIN OFFICE TRACT NO. 20207



PC 3277



P.C. 3227
PAGE 5

NO CHARGE FOR CONNECTIONS

21,021

40

Trim Line

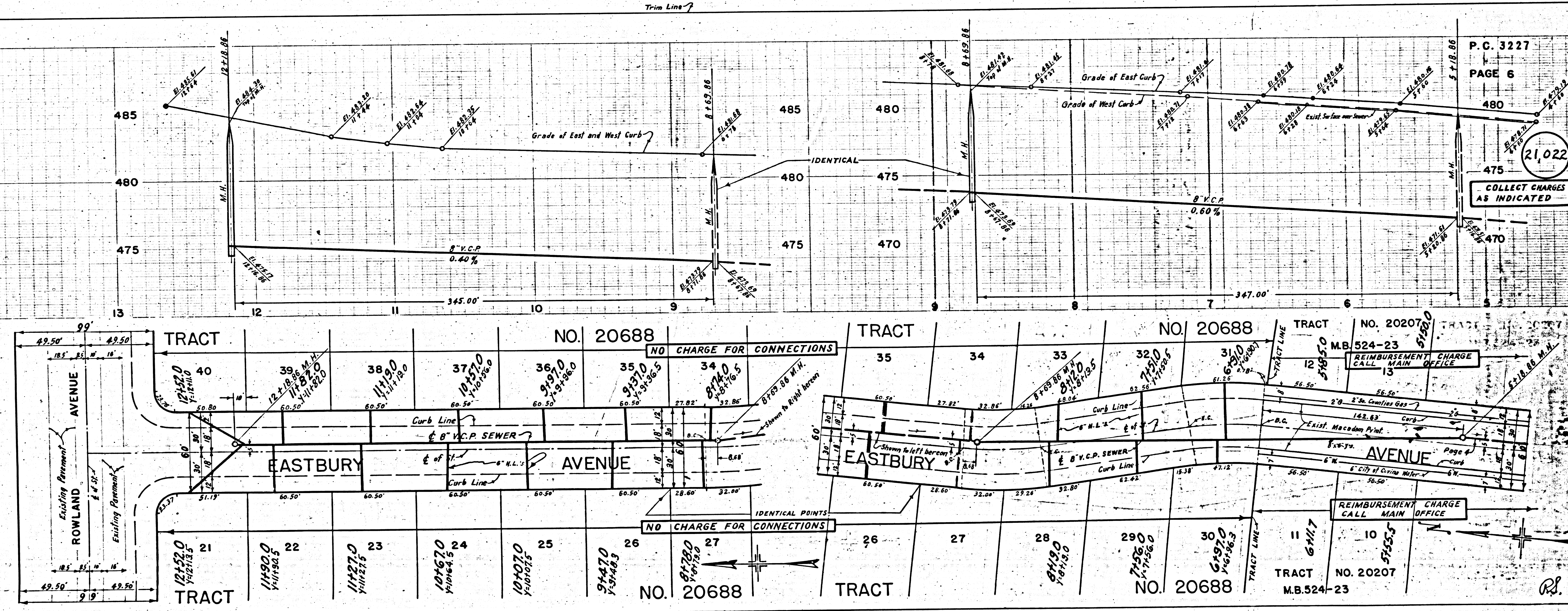
P.C. 3227
PAGE 7

470
COLLECT CHARGES AS INDICATED
21,023

P.C. 3227
PAGE 6
COLLECT CHARGES AS INDICATED
21,022

TRACT NO. 20688

P.C. 3227
TRACT NO. 20688



0+00 EXIST. J.C.
EXIST. 24" TRUNK SEWER
SOUTH DIST. NO. 22
BANNER CITY OF CALIFORNIA

REIMBURSEMENT CHARGE
CALL MAIN OFFICE

REIMBURSEMENT CHARGE
CALL MAIN OFFICE

REIMBURSEMENT CHARGE
CALL MAIN OFFICE

REIMBURSEMENT CHARGE
CALL MAIN OFFICE

REIMBURSEMENT CHARGE
CALL MAIN OFFICE

REIMBURSEMENT CHARGE
CALL MAIN OFFICE

REIMBURSEMENT CHARGE
CALL MAIN OFFICE

REIMBURSEMENT CHARGE
CALL MAIN OFFICE

REIMBURSEMENT CHARGE
CALL MAIN OFFICE

REIMBURSEMENT CHARGE
CALL MAIN OFFICE

REIMBURSEMENT CHARGE
CALL MAIN OFFICE

REIMBURSEMENT CHARGE
CALL MAIN OFFICE

REIMBURSEMENT CHARGE
CALL MAIN OFFICE

REIMBURSEMENT CHARGE
CALL MAIN OFFICE

REIMBURSEMENT CHARGE
CALL MAIN OFFICE

REIMBURSEMENT CHARGE
CALL MAIN OFFICE

REIMBURSEMENT CHARGE
CALL MAIN OFFICE

REIMBURSEMENT CHARGE
CALL MAIN OFFICE

REIMBURSEMENT CHARGE
CALL MAIN OFFICE

REIMBURSEMENT CHARGE
CALL MAIN OFFICE

REIMBURSEMENT CHARGE
CALL MAIN OFFICE

REIMBURSEMENT CHARGE
CALL MAIN OFFICE

REIMBURSEMENT CHARGE
CALL MAIN OFFICE

REIMBURSEMENT CHARGE
CALL MAIN OFFICE

REIMBURSEMENT CHARGE
CALL MAIN OFFICE

REIMBURSEMENT CHARGE
CALL MAIN OFFICE

REIMBURSEMENT CHARGE
CALL MAIN OFFICE

REIMBURSEMENT CHARGE
CALL MAIN OFFICE

REIMBURSEMENT CHARGE
CALL MAIN OFFICE

REIMBURSEMENT CHARGE
CALL MAIN OFFICE

REIMBURSEMENT CHARGE
CALL MAIN OFFICE

REIMBURSEMENT CHARGE
CALL MAIN OFFICE

REIMBURSEMENT CHARGE
CALL MAIN OFFICE

REIMBURSEMENT CHARGE
CALL MAIN OFFICE

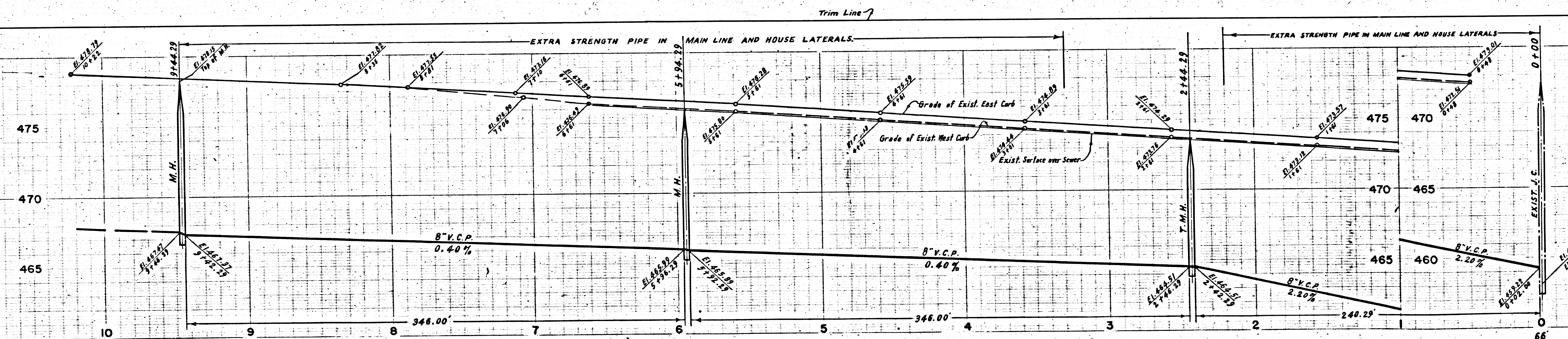
REIMBURSEMENT CHARGE
CALL MAIN OFFICE

REIMBURSEMENT CHARGE
CALL MAIN OFFICE

REIMBURSEMENT CHARGE
CALL MAIN OFFICE

REIMBURSEMENT CHARGE
CALL MAIN OFFICE

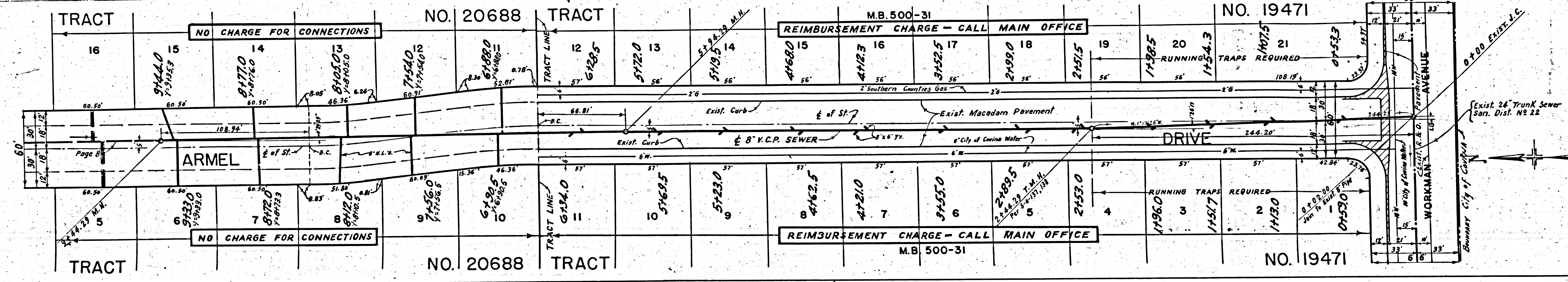
024
LARGE CONNECTIONS



P.C. 3227
PAGE 7

470
COLLECT CHARGES AS INDICATED

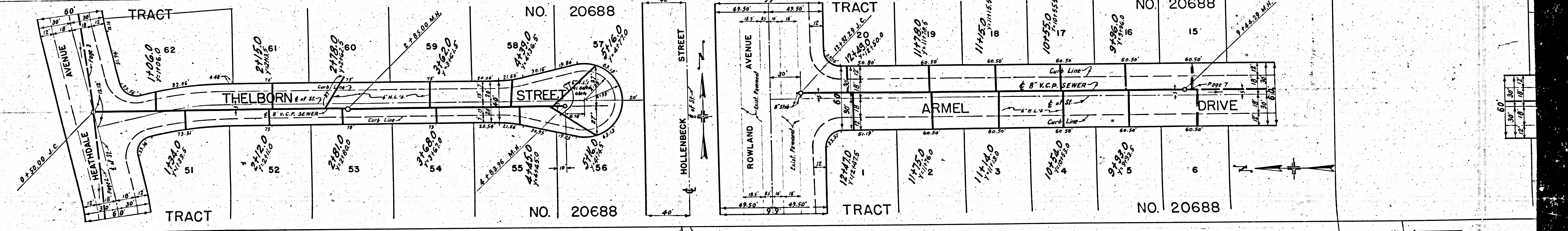
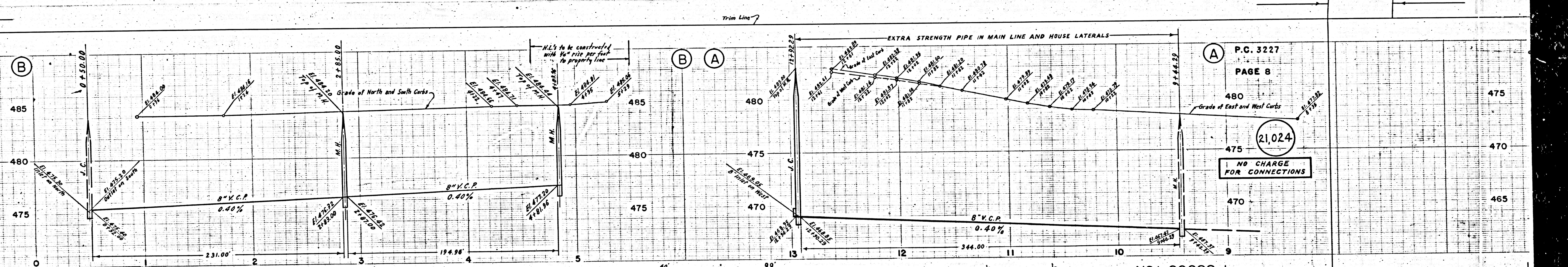
21,023



NO. 19471

EXIST. 24" TRUNK SEWER
SON. DIST. NS 22

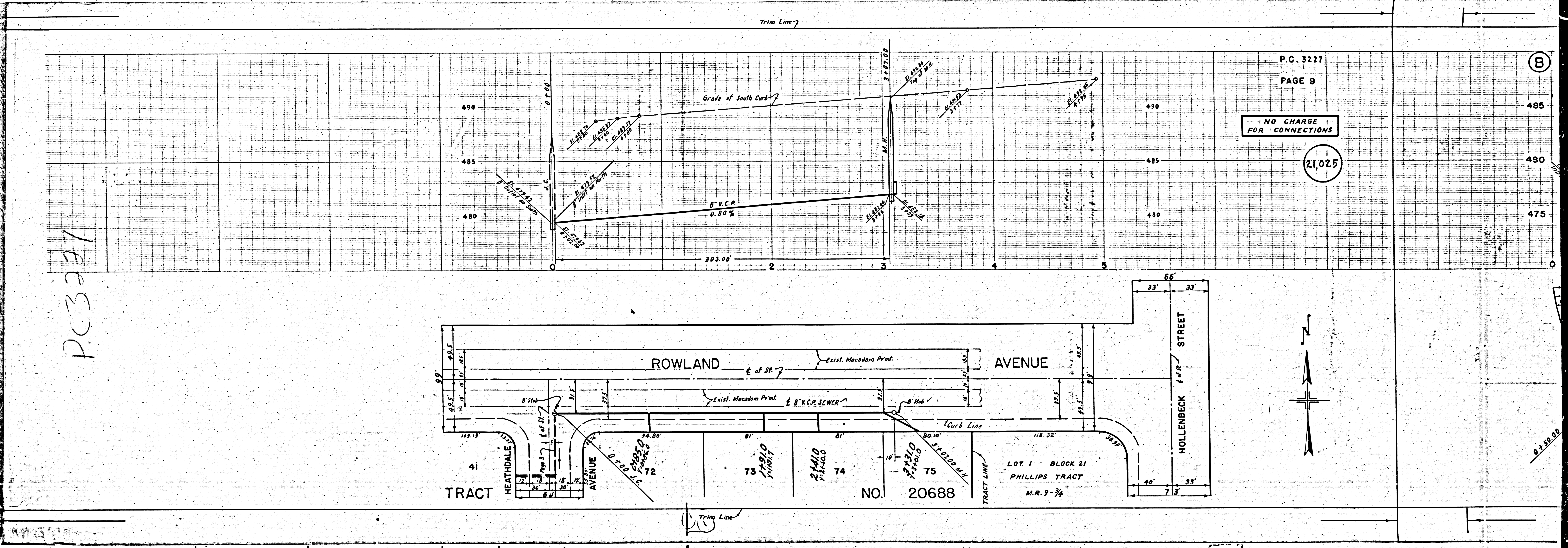
NO. 19471



P.C. 3227
 PAGE 8
 21,024
 NO CHARGE FOR CONNECTIONS

Trim Line

PC3227



P.C. 3227
PAGE 9

NO CHARGE
FOR CONNECTIONS

21,025

(B)

485

480

475

0

0+59.00

NO. 20688