

SAN DIMAS Bldg. Dist. No. 10

BENCH MARK:
56 1180 L&T 22' North of Northeast curb return at
Circus Ave. and Baseline Rd. Elev 600.67

- NOTE:
1. Provide stakes on the property lines or property lines produced at right angles to the sewer line at the center line of each manhole.
 2. No representative of the County Engineer will survey or layout any portion of the work. The owner or his authorized representative shall furnish the County Engineer with grade sheets and stations for all house laterals and Y branches and shall provide stakes for them at their proper locations with stationing plainly marked. Any change in location shall be requested in writing by the owner or his representative.
 3. No revisions shall be made in these plans without the approval of the County Engineer.
 4. Use standard manhole frames and covers, S-a-117.
 5. Use standard strength pipe except as noted.
 6. Use cement mortar for all vitrified clay pipe joints.
 7. Resurface all trench within paved area to meet L.A. County Road Dept. or Calif. State Highway Dept. requirements in accordance with permit.
 8. Encase four feet of sewer at points of interference with poles, S-a-119.
 9. House laterals to be constructed with inverts at property line 6.....feet below curb grade except as noted.
 10. All structures shall be brick sewer structures, S-a-104.
 11. For allowable leakage test, use Formula No., Spec's., Sec. 51.

PROFILE, ALIGNMENT AND GRADE OF
SANITARY SEWERS
TO BE CONSTRUCTED IN

P. C. 3229
J. N. 1100.02
PAGE 1

TRACT N° 20498

PRIVATE CONTRACT NO. 3229
W. S. 47

Scale: VERT. 1"=4'
HORIZ. 1"=40'

PREPARED IN THE OFFICES OF
KARL TUTTLE ENGINEERING CO.
FOR LEGEND SEE PLAN NO. S-a-64

NOTE:

Grades to which this improvement is to be constructed are shown on plans and profiles. Grade points for top of curbs, center line of streets, or center line of alleys are shown by circles on profiles. At all points between designated points the grade shall be established so as to conform to a straight line drawn between said designated points.

Elevations are in feet above U.S.G.S. datum or mean sea level.

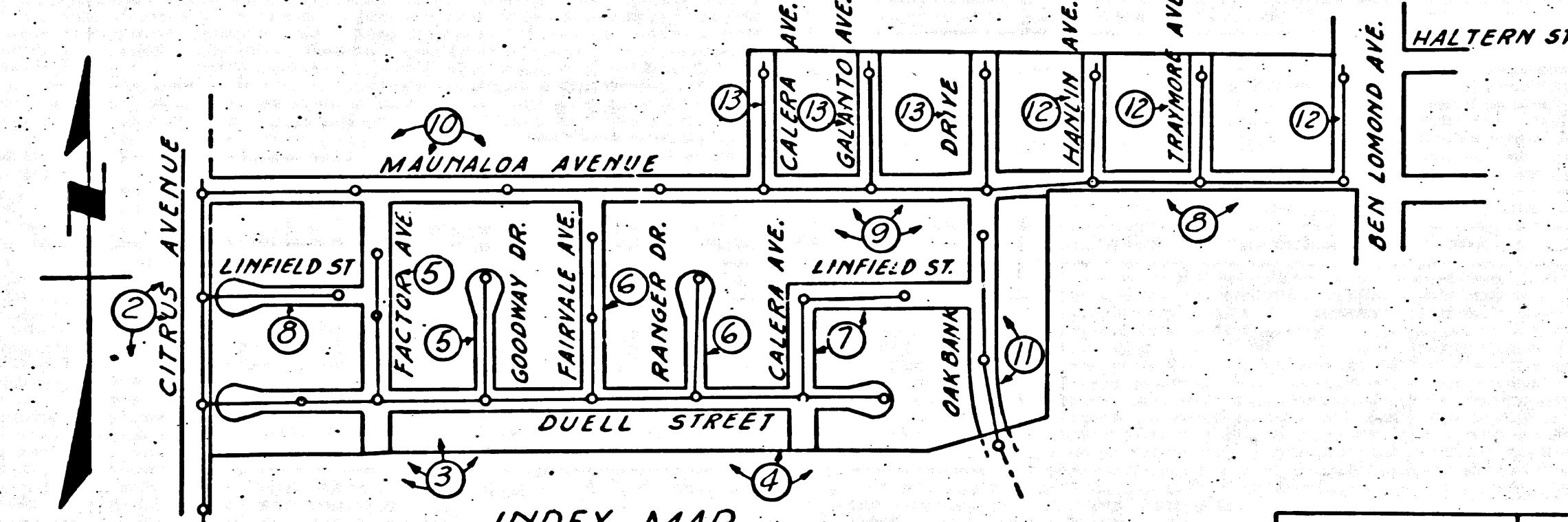
This drawing and the data hereon are hereby made a part of the specifications. Work shall be constructed according to specifications on file in the office of the County Engineer and shall be prosecuted only in the presence of the County Engineer.

Before work can be started, the contractor must obtain a permit to excavate in County streets from the L.A. County Road Dept., 108 W. 2nd St., and make a deposit with the County Engineer, 733 L.A. County Engineering Building, sufficient to cover the cost of construction inspection and record plans.

Approval of this plan by the County of Los Angeles does not constitute a representation as to the accuracy of the location of or the existence or non-existence of any underground utility, pipe, or structure within the limits of this project. This note applies to all sheets. If work is to be done in a State Highway, a permit must be obtained from the State of California, Division of Highways, 120 South Spring Street.

COUNTY OF LOS ANGELES, CALIFORNIA

Approved, William J. Fox, County Engineer
Approved, A. M. Rawn
Checked By: [Signature] Office Engineer
Office of County Engineer, Reg. C. E. No. 2862



INDEX MAP
SCALE 1"=400
TRACT N° 20498
PC. 3229 J.N. 1010.11

SHEET NO	PAGES
1	1-5
2	6-10
3	11-13

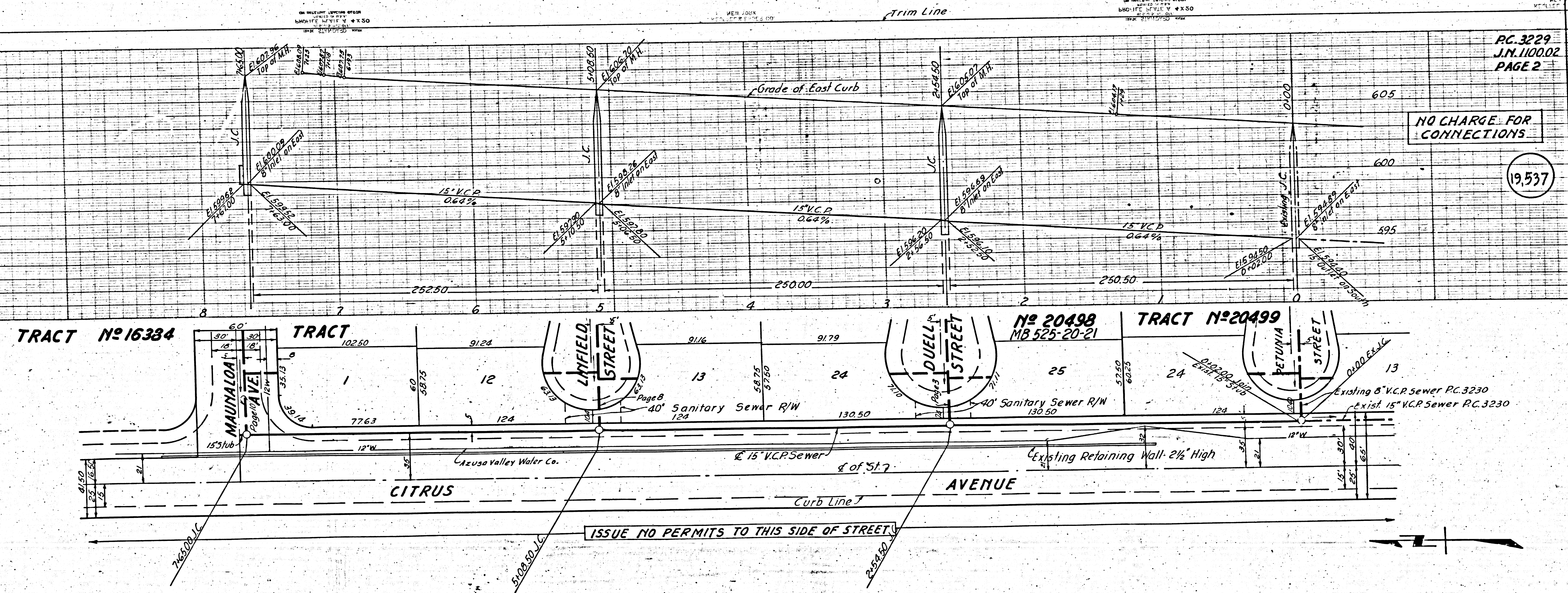
COLLECT CHARGES AS INDICATED
R. P. [Signature] 11-24-54

Sealed 1-5-55 W. J. Fox

19536

(13)

TRACT 115 50808
 PC 3229
 J.N. 1100.02
 W.S. 47
 KARL TUTTLE ENGINEERING CO.
 733 L.A. COUNTY ENGINEERING BUILDING
 LOS ANGELES, CALIF.



PC. 3229
J.N. 1100.02
PAGE 2

NO CHARGE FOR CONNECTIONS

19537

ISSUE NO PERMITS TO THIS SIDE OF STREET



Page Trim Line

Page Trim Line

Trim Line

TRACT N°16334

TRACT

N° 20498
MB 525-20-21

TRACT N°20499

MAUNALOA AVE

LANFIELD STREET

DUCELL STREET

BETUNIA STREET

102.50

91.24

91.16

91.79

130.50

130.50

124

124

124

124

7763

124

124

124

124

124

124

124

124

124

153.10

153.10

153.10

153.10

153.10

153.10

153.10

153.10

153.10

153.10

153.10

153.10

153.10

153.10

153.10

153.10

153.10

153.10

153.10

153.10

153.10

153.10

153.10

153.10

153.10

153.10

153.10

153.10

153.10

153.10

153.10

153.10

153.10

153.10

153.10

153.10

153.10

153.10

153.10

153.10

153.10

153.10

153.10

153.10

153.10

153.10

153.10

153.10

153.10

153.10

153.10

153.10

153.10

153.10

153.10

153.10

153.10

153.10

153.10

153.10

153.10

153.10

153.10

153.10

153.10

153.10

153.10

153.10

153.10

153.10

PC 3229
J.M. 110002
PAGE 4

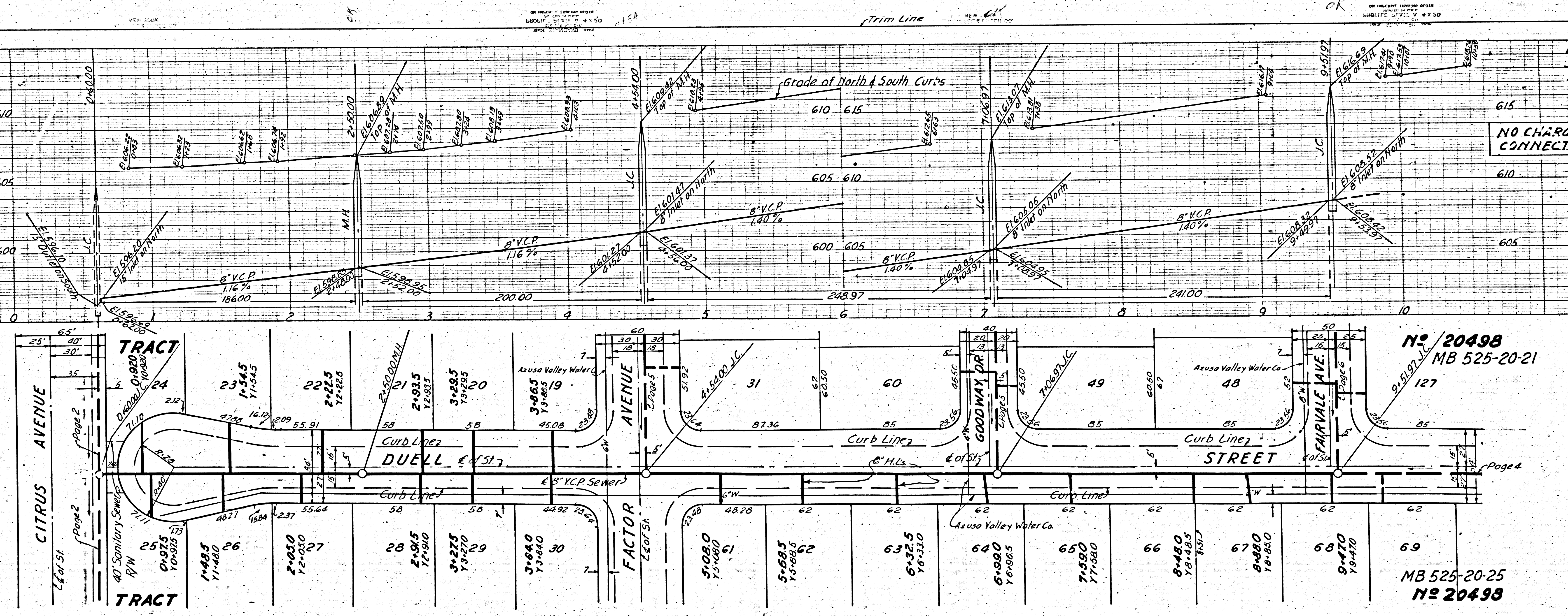
PC 3229
J.M. 110002
PAGE 3

NO CHARGE FOR CONNECTIONS

NO CHARGE FOR CONNECTIONS

19,539

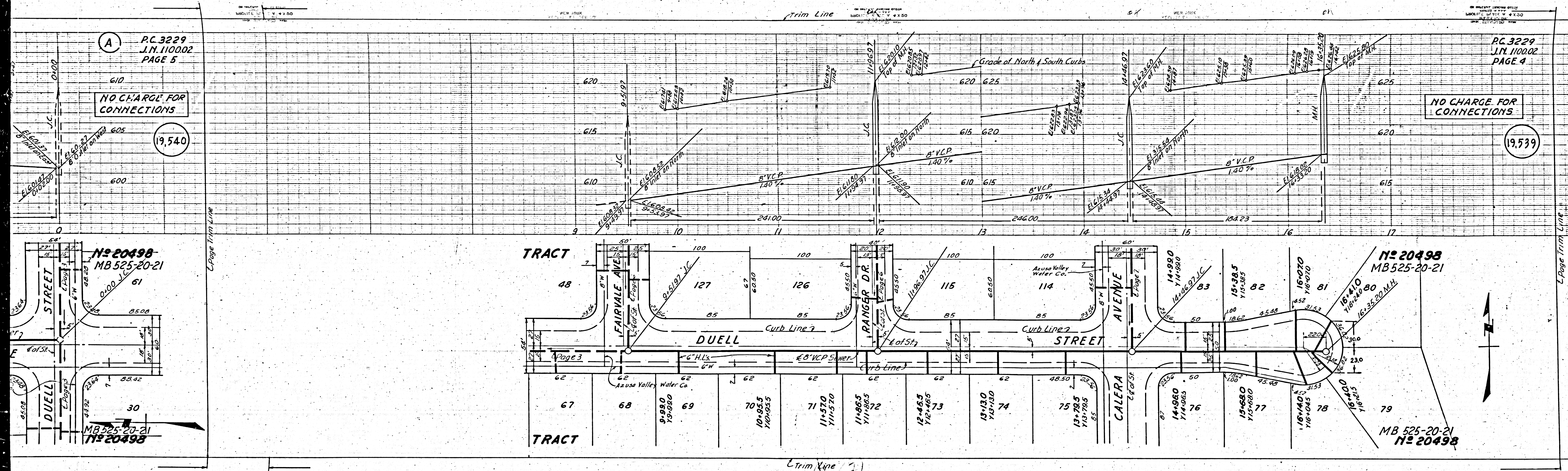
19,538



N^o 20498
MB 525-20-21

MB 525-20-25
N^o 20498

98



A
P.C. 3229
J.N. 110002
PAGE 5

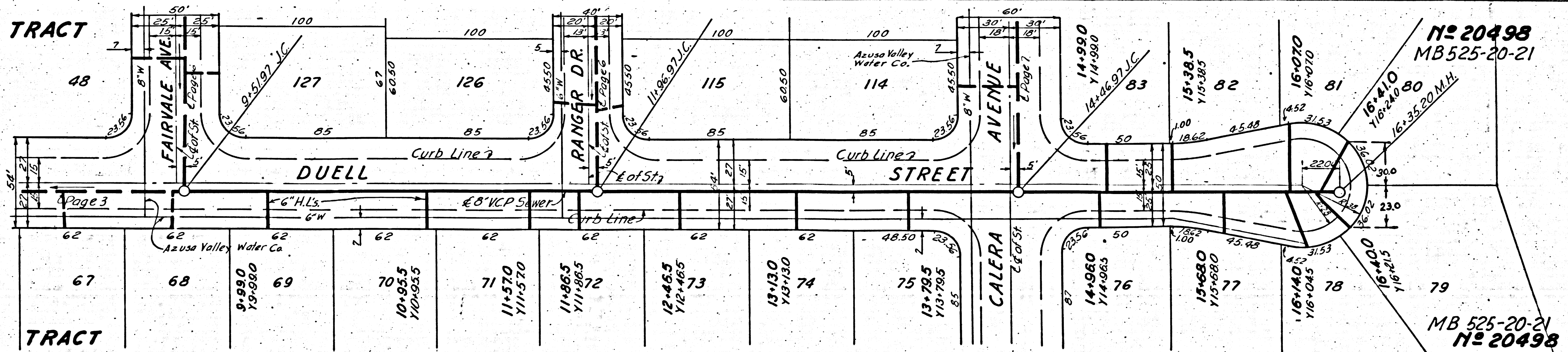
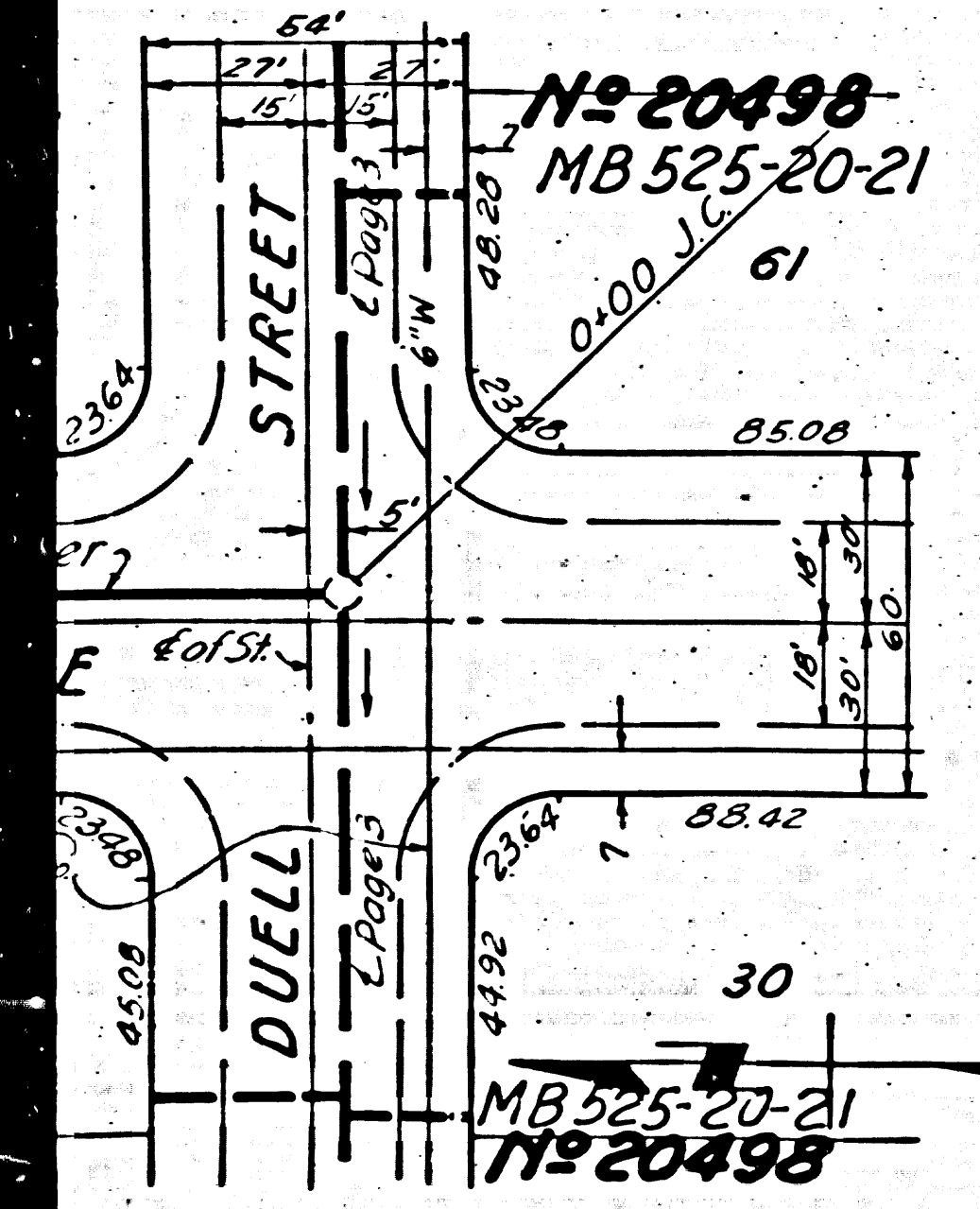
P.C. 3229
J.N. 110002
PAGE 4

NO CHARGE FOR CONNECTIONS

NO CHARGE FOR CONNECTIONS

19,540

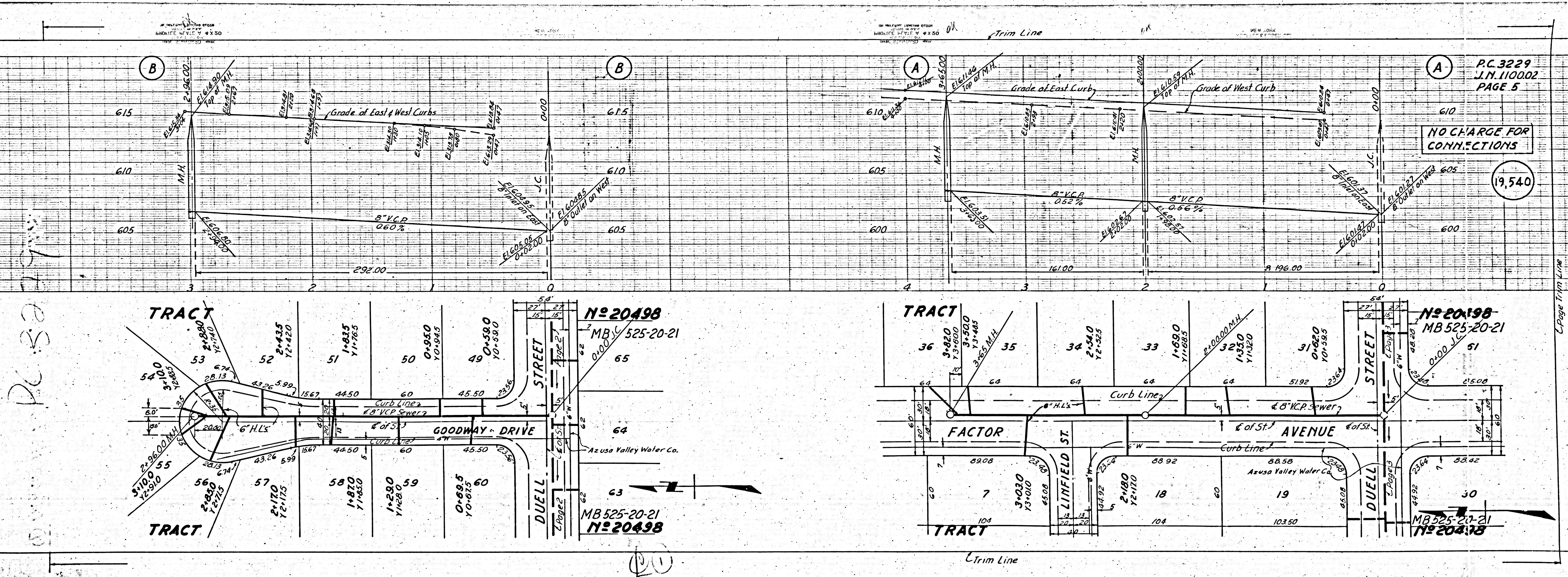
19,539



Trim Line

Page Trim Line

Page Trim Line



PC 3229
 J.N. 110002
 PAGE 5

PC 3229
 J.N. 110002
 PAGE 5

19,540

NO CHARGE FOR CONNECTIONS

10

PC. 3229
J.N. 11000.2
PAGE 7

PC. 3229
J.N. 11000.2
PAGE 6

NO CHARGE FOR CONNECTIONS

NO CHARGE FOR CONNECTIONS

19542

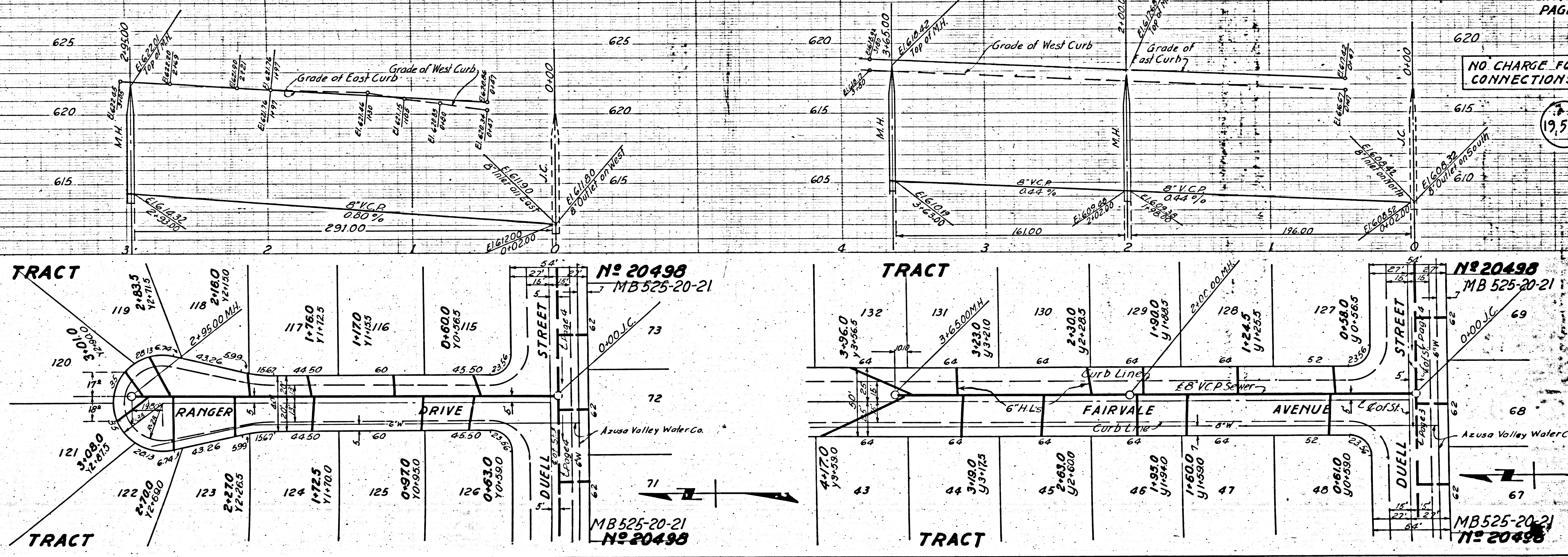
19541

20498
525-20-21

525-20-21
20498

NO CHARGE FOR CONNECTIONS

NO CHARGE FOR CONNECTIONS



PC. 3229
J.N. 11000.2
PAGE 6

PC. 3229
J.N. 11000.2
PAGE 7

NO CHARGE FOR CONNECTIONS

NO CHARGE FOR CONNECTIONS

NO CHARGE FOR CONNECTIONS

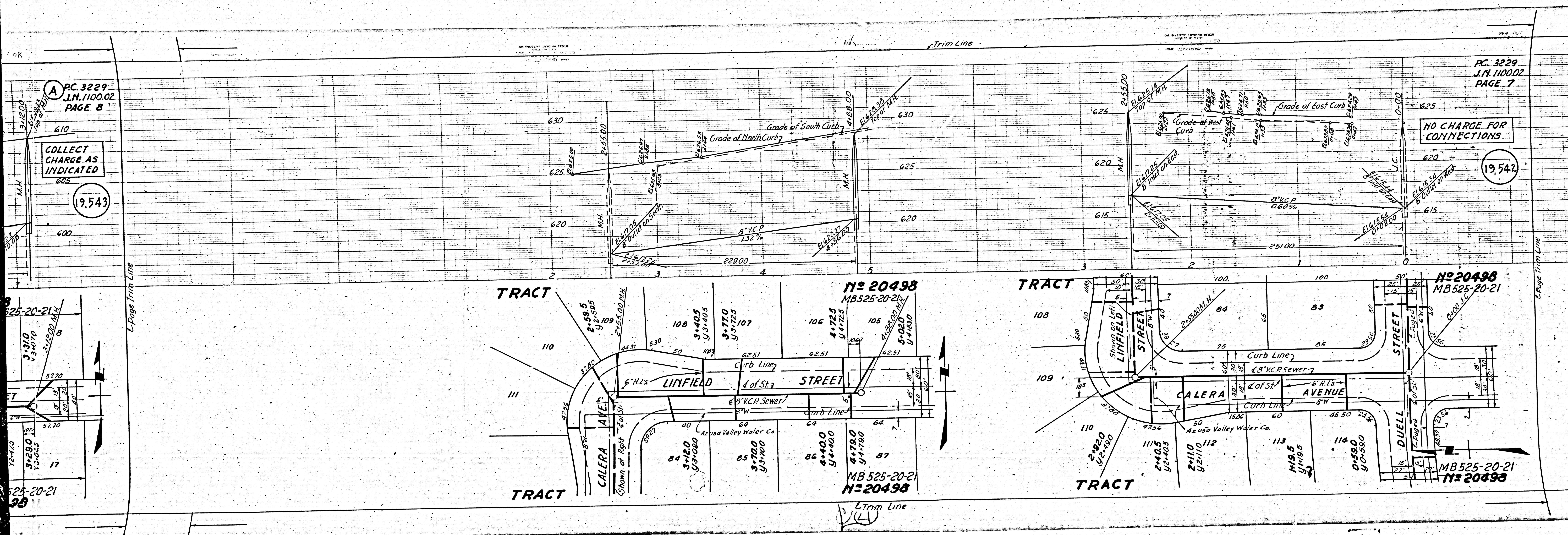
NO CHARGE FOR CONNECTIONS

Trim Line

Trim Line

NO CHARGE FOR CONNECTIONS

NO CHARGE FOR CONNECTIONS



PC. 3229
J.N. 1100.02
PAGE 8

COLLECT CHARGE AS INDICATED

19,543

PC. 3229
J.N. 1100.02
PAGE 7

NO CHARGE FOR CONNECTIONS

19,542

N# 20498
MB525-20-21

N# 20498
MB525-20-21

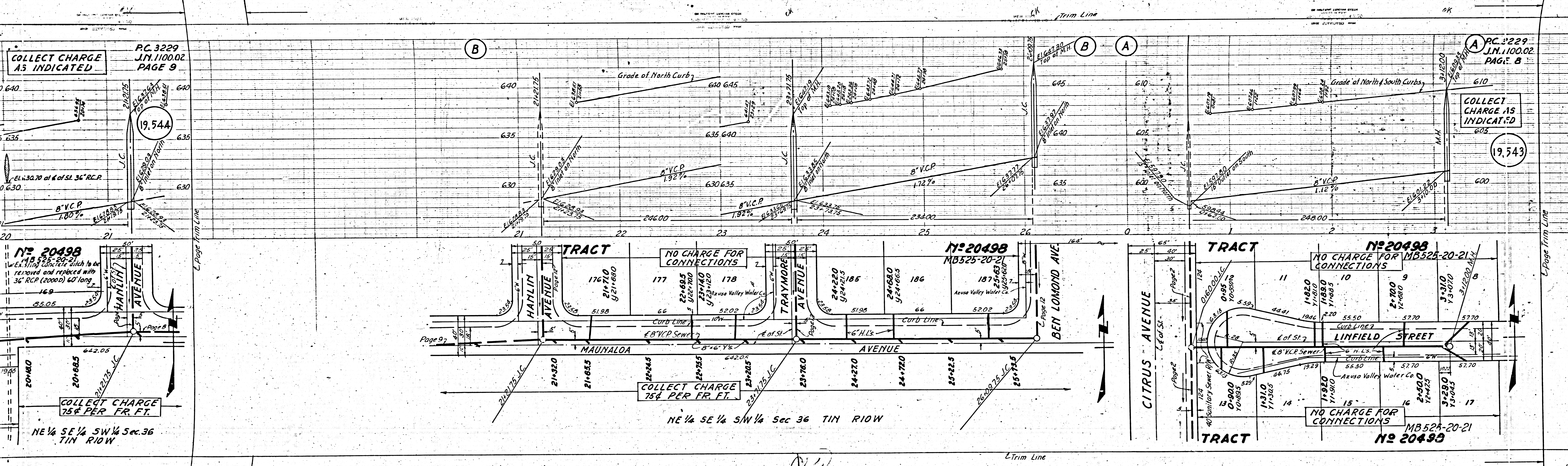
N# 20498
MB525-20-21

N# 20498
MB525-20-21

Trim Line

Page Trim Line

Page Trim Line



COLLECT CHARGE AS INDICATED
 PC 3229 J.M. 1100.02 PAGE 9

COLLECT CHARGE AS INDICATED
 PC 3229 J.M. 1100.02 PAGE 8

19.544

19.543

NO 20498
 MB 525-20-21
 Existing concrete ditch to be removed and replaced with 36" RCP (2000) 60' long

NO CHARGE FOR CONNECTIONS

NO 20498
 MB 525-20-21

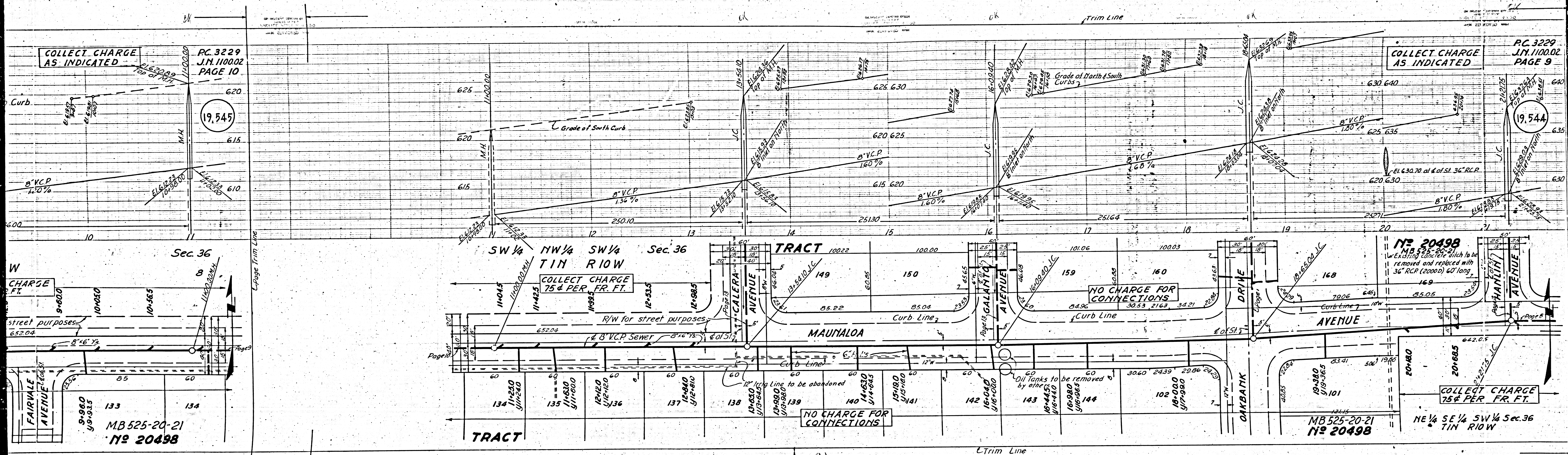
NO CHARGE FOR CONNECTIONS
 NO 20498
 MB 525-20-21

COLLECT CHARGE 75¢ PER FR. FT.
 NE 1/4 SE 1/4 SW 1/4 Sec. 36 TIN RIOW

COLLECT CHARGE 75¢ PER FR. FT.

NO CHARGE FOR CONNECTIONS
 NO 20498
 MB 525-20-21

NE 1/4 SE 1/4 SW 1/4 Sec 36 TIN RIOW



COLLECT CHARGE AS INDICATED

PC 3229
JM 1100.02
PAGE 10

19,545

COLLECT CHARGE AS INDICATED

PC 3229
JM 1100.02
PAGE 9

19,544

COLLECT CHARGE 75¢ PER FR. FT.

NO CHARGE FOR CONNECTIONS

No 20498
Existing concrete ditch to be removed and replaced with 36" RCP (20000) 60' long

COLLECT CHARGE 75¢ PER FR. FT.

MB 525-20-21
No 20498

MB 525-20-21
No 20498

NO CHARGE FOR CONNECTIONS

Oil Tanks to be removed by other

(2)

Trim Line

Sec. 36

Sec. 36

TRACT 10022

SW 1/4

NW 1/4

SW 1/4

No 20498

NE 1/4 SE 1/4 SW 1/4 Sec. 36
TIN RIOW

TRACT

NO CHARGE FOR CONNECTIONS

Oil Tanks to be removed by other

(2)

Trim Line

Sec. 36

Sec. 36

TRACT 10022

SW 1/4

NW 1/4

SW 1/4

No 20498

NE 1/4 SE 1/4 SW 1/4 Sec. 36
TIN RIOW

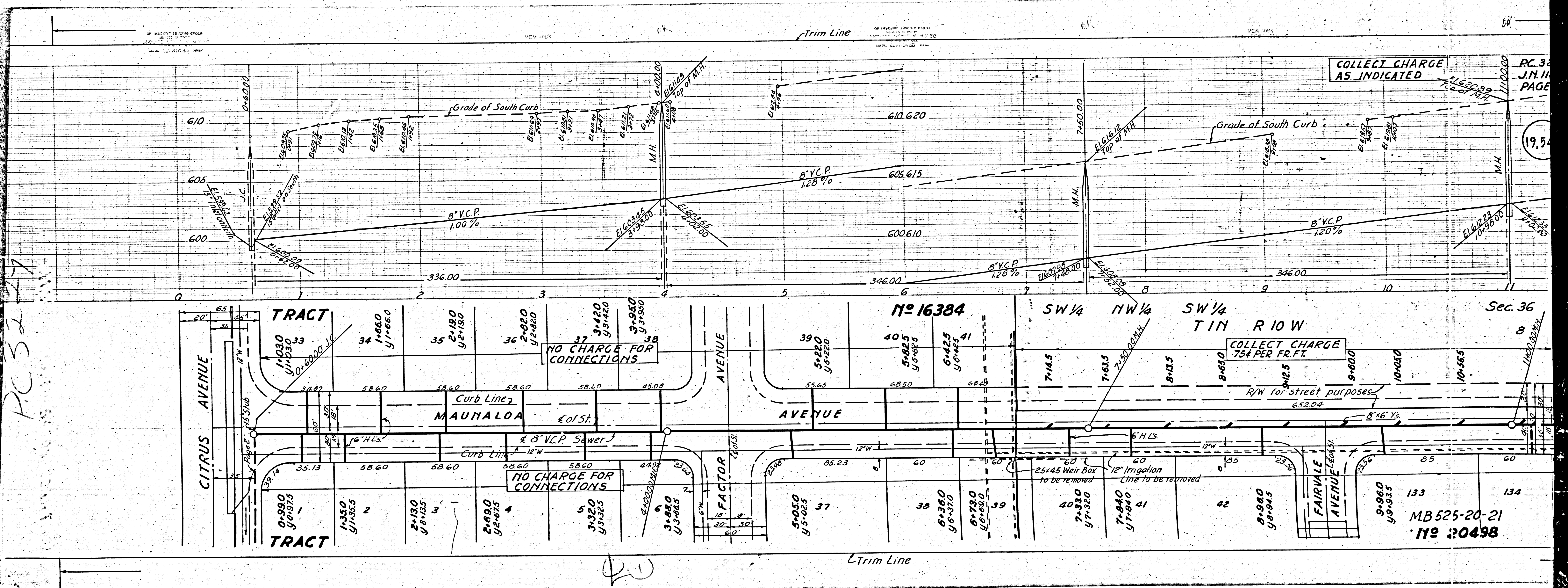
TRACT

NO CHARGE FOR CONNECTIONS

Oil Tanks to be removed by other

(2)

Trim Line



PC 527

PC 36
J.M. 11
PAGE

19.54

Sec. 36

MB 525-20-21
No. 30498

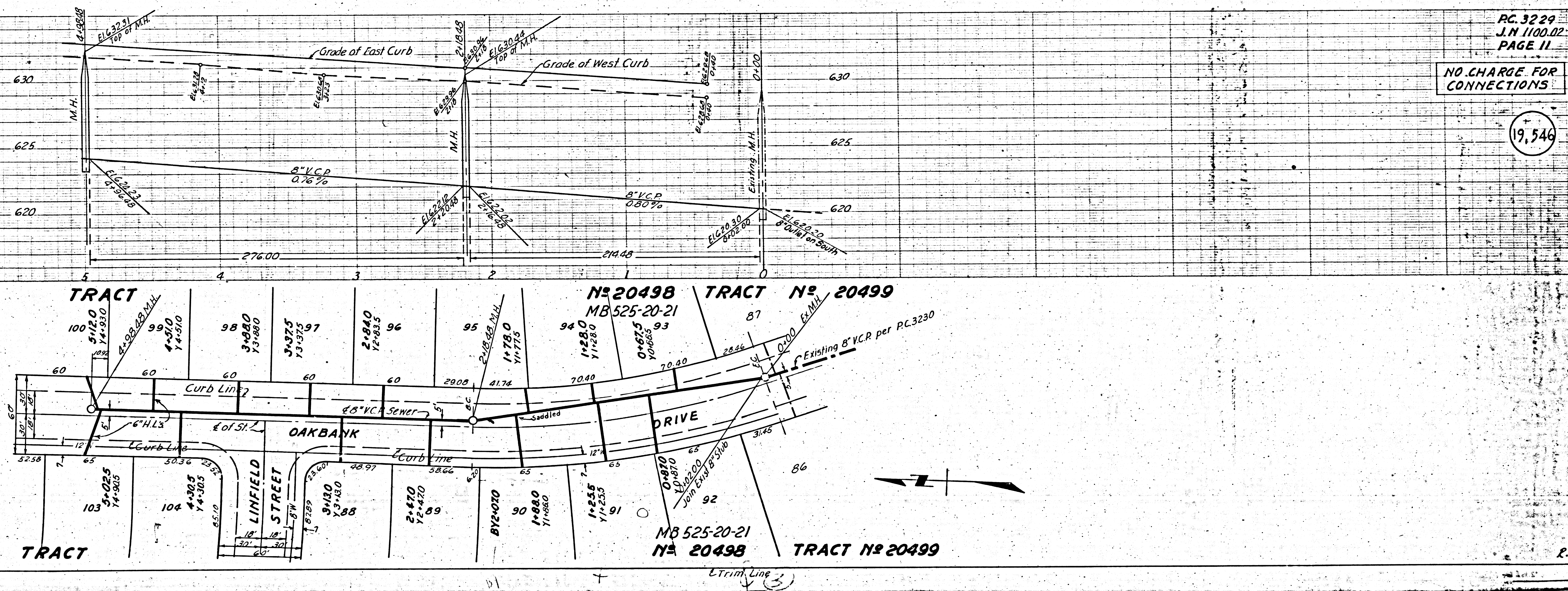
PC. 3229
J.N. 1100.02
PAGE 12

(19,547)

0+00 J.C.
L Page 5

L Page Trim Line

L Page 8



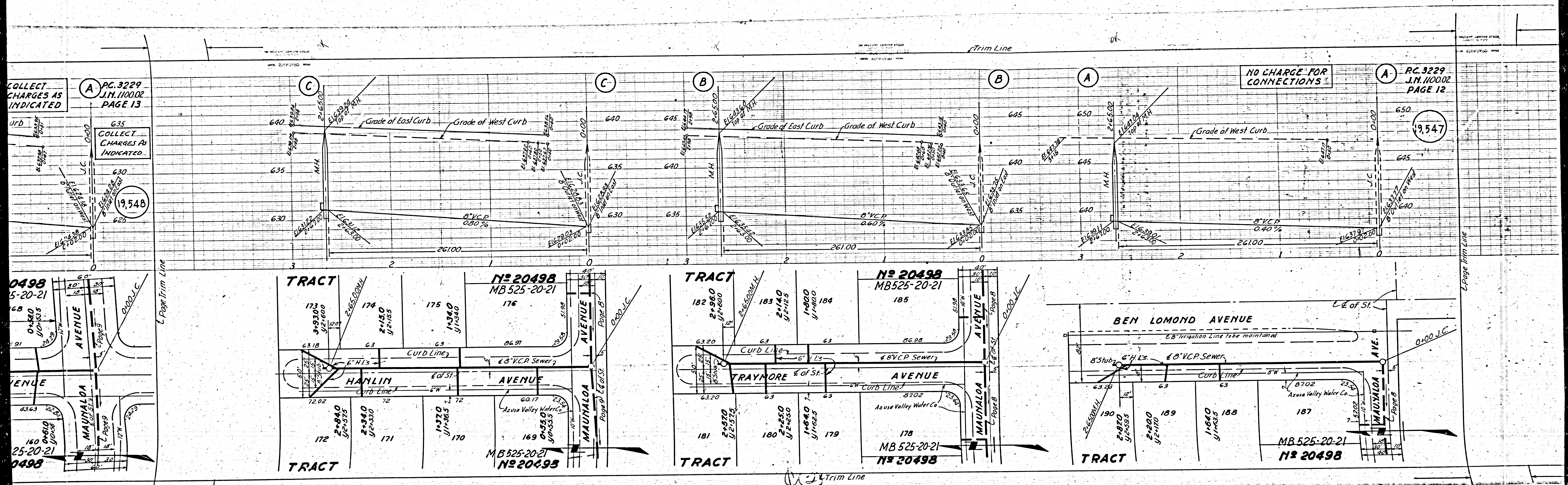
PC. 3229
J.N. 1100.02
PAGE 11

NO CHARGE FOR CONNECTIONS

(19,546)

J.N. 1100.05 PC. 3229

PC. 3255
PAGE 11
E TRACT 50498



COLLECT CHARGES AS INDICATED

PC. 3229 J.N. 110002 PAGE 13

COLLECT CHARGES AS INDICATED

19,548

NO CHARGE FOR CONNECTIONS

PC. 3229 J.N. 110002 PAGE 12

19,547

0498 5-20-21

173 174 175 176

172 171 170

178 179 180 181

182 183 184 185

187 188 189 190

0498 25-20-21

TRACT

TRACT

TRACT

TRACT

TRACT

N^o 20498 MB 525-20-21

N^o 20498 MB 525-20-21

N^o 20498 MB 525-20-21

N^o 20498 MB 525-20-21

N^o 20498 MB 525-20-21

HANLIN AVENUE

TRAYMORE AVENUE

BEN LOMOND AVENUE

MAUNALOA AVENUE

MAUNALOA AVENUE

MAUNALOA AVENUE

MAUNALOA AVENUE

MAUNALOA AVENUE

MAUNALOA AVENUE

MAUNALOA AVENUE

MAUNALOA AVENUE

MAUNALOA AVENUE

MAUNALOA AVENUE

MAUNALOA AVENUE

MAUNALOA AVENUE

MAUNALOA AVENUE

MAUNALOA AVENUE

MAUNALOA AVENUE

MAUNALOA AVENUE

MAUNALOA AVENUE

MAUNALOA AVENUE

MAUNALOA AVENUE

MAUNALOA AVENUE

MAUNALOA AVENUE

MAUNALOA AVENUE

MAUNALOA AVENUE

MAUNALOA AVENUE

MAUNALOA AVENUE

MAUNALOA AVENUE

MAUNALOA AVENUE

MAUNALOA AVENUE

MAUNALOA AVENUE

MAUNALOA AVENUE

MAUNALOA AVENUE

MAUNALOA AVENUE

MAUNALOA AVENUE

MAUNALOA AVENUE

MAUNALOA AVENUE

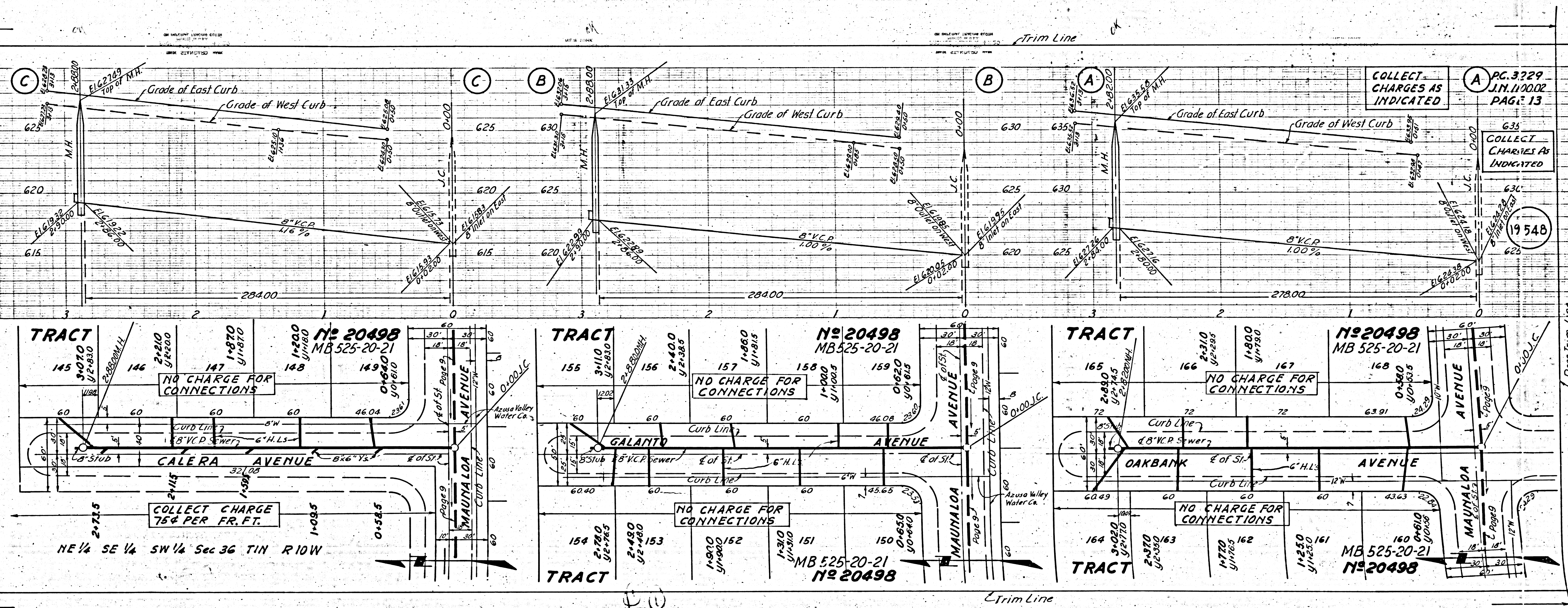
MAUNALOA AVENUE

MAUNALOA AVENUE

MEASUREMENTS
KUTLER & ASSOC. INC.

MEASUREMENTS
KUTLER & ASSOC. INC.

PC 3229

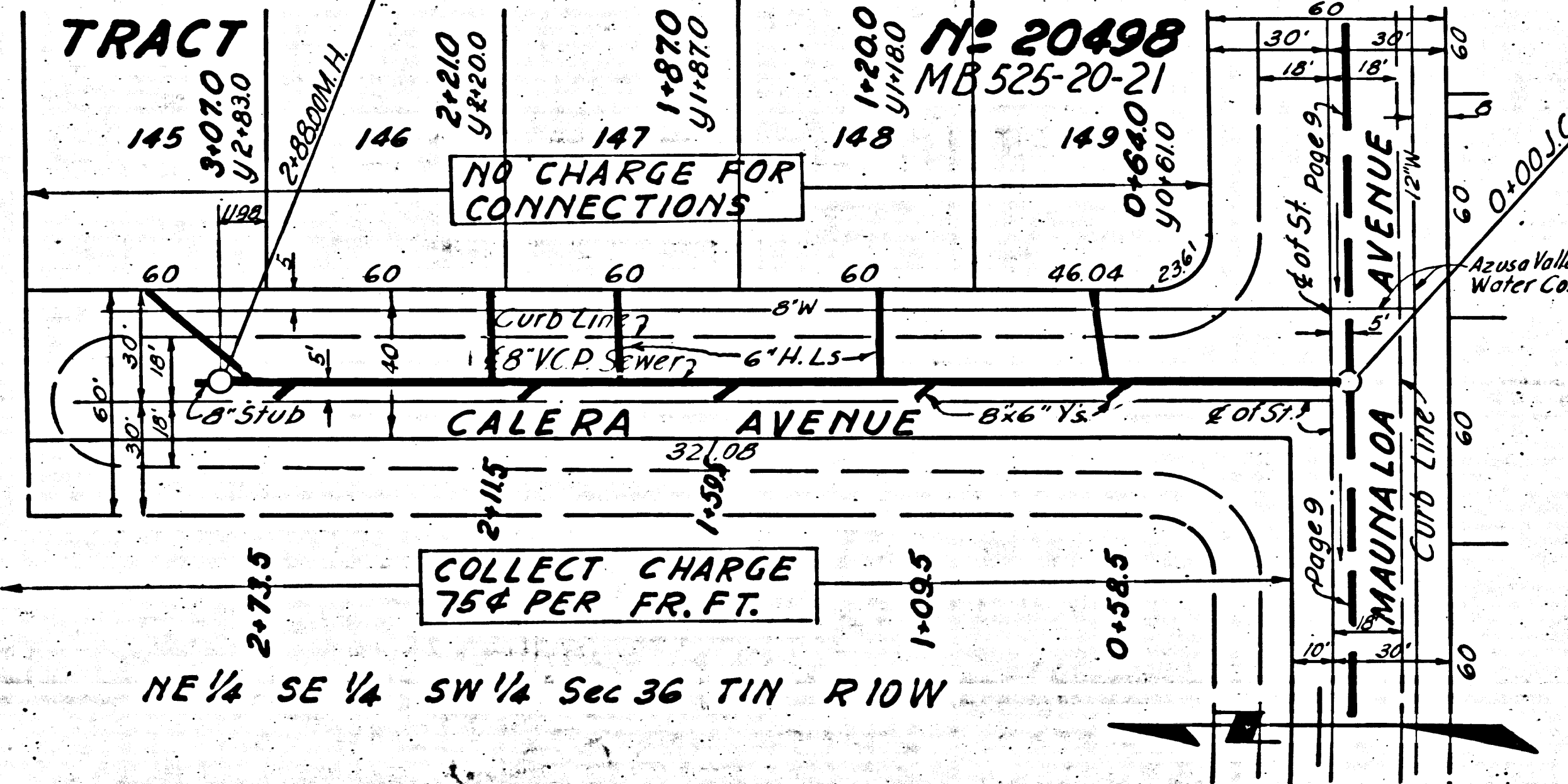


COLLECT CHARGES AS INDICATED

PC 3229
J.N. 110002
PAGE 13

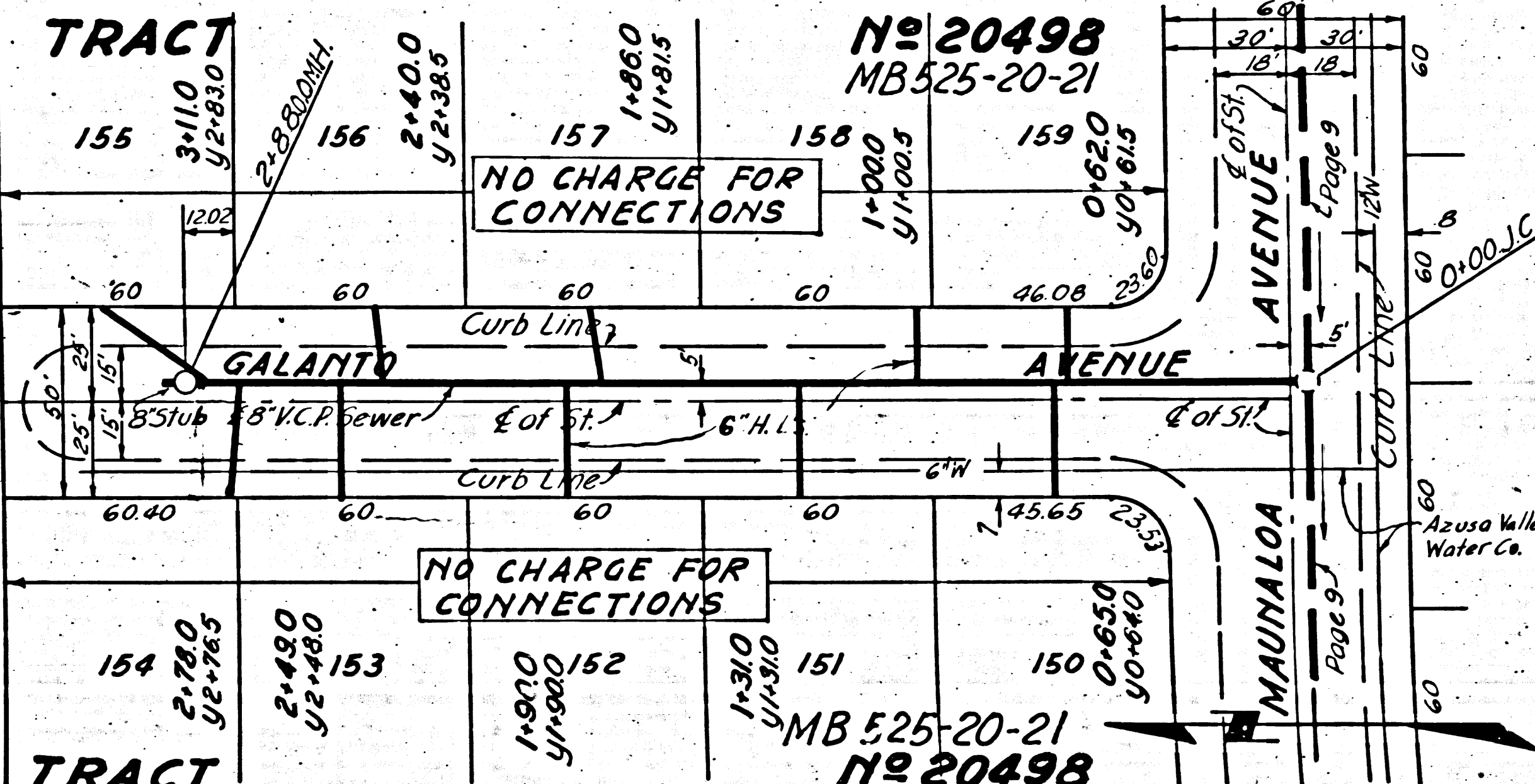
COLLECT CHARGES AS INDICATED

19 548



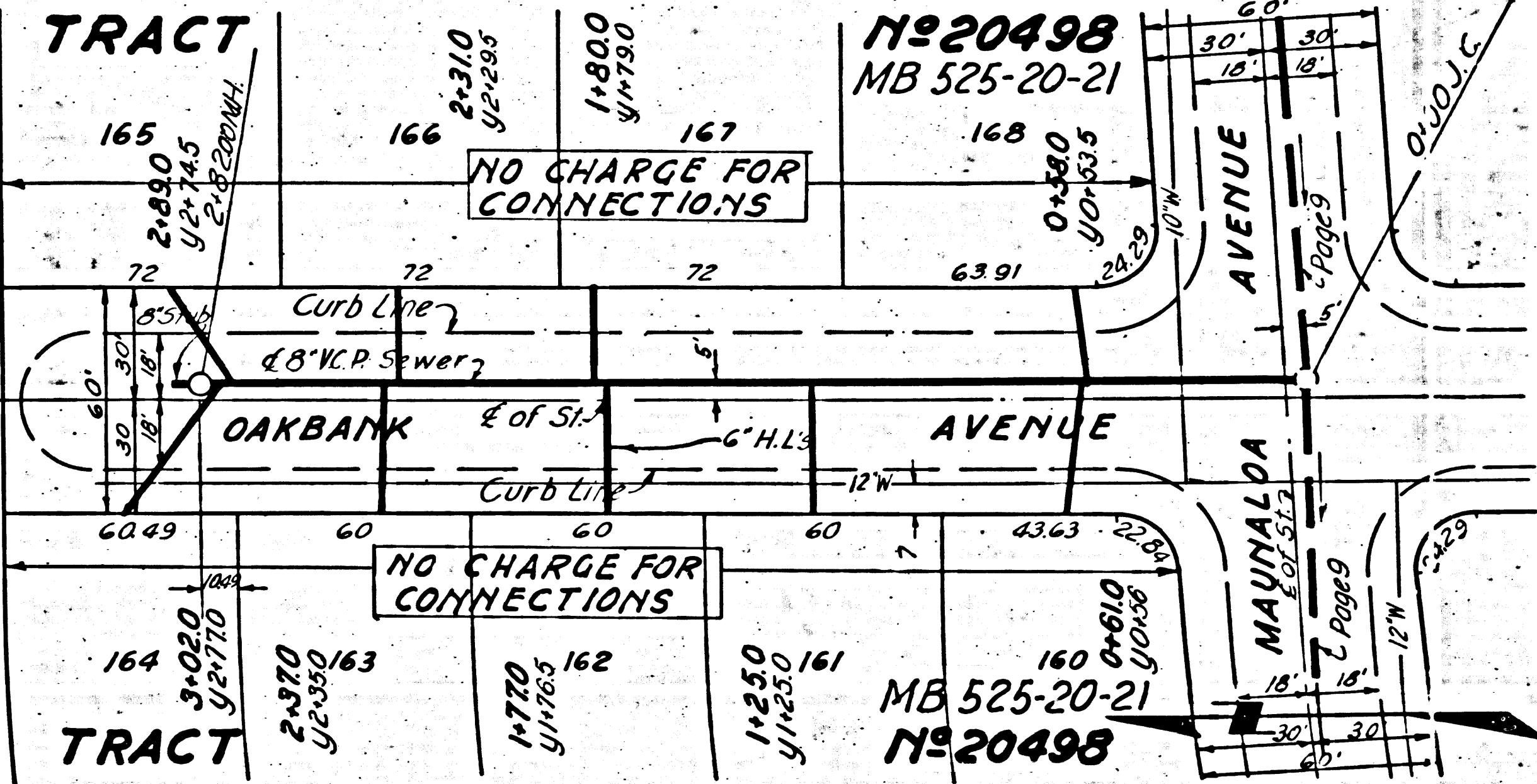
COLLECT CHARGE
75¢ PER FR. FT.

NE 1/4 SE 1/4 SW 1/4 Sec 36 T11N R10W



NO CHARGE FOR CONNECTIONS

NO CHARGE FOR CONNECTIONS



NO CHARGE FOR CONNECTIONS

NO CHARGE FOR CONNECTIONS

Page Trim Line

Trim Line