

B.M.S.G. 1180, Elev. 600.67  
 L&T 22' North of Northeast curb  
 return at Citrus Ave and Baseline Road

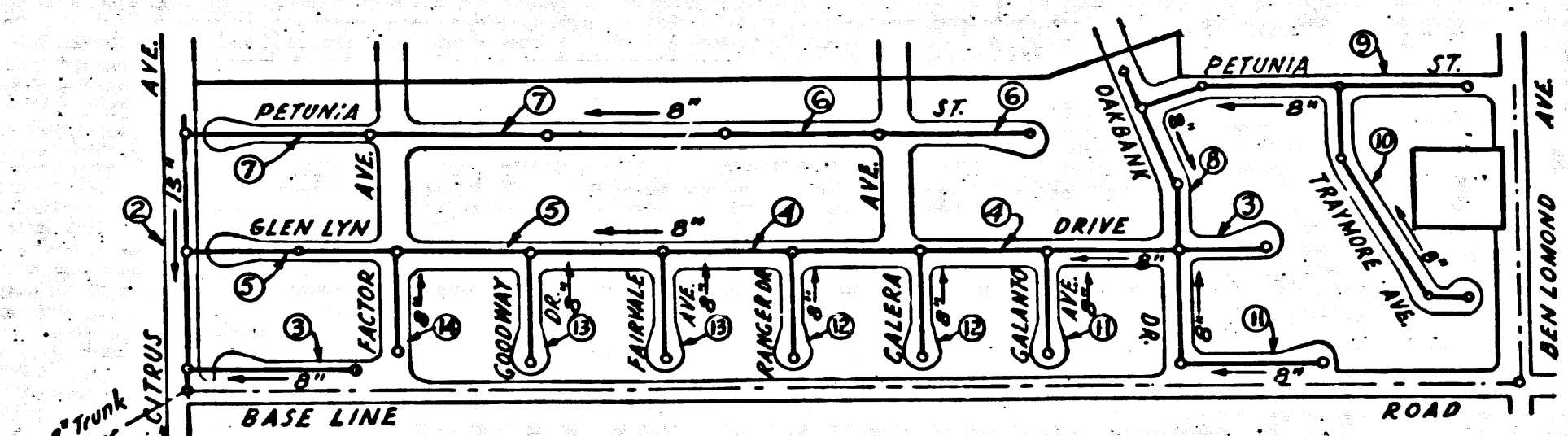
before breaking into any existing structure  
 and before final acceptance of this work,  
 County Sanitation District should be notified  
 in order that required inspection may be made.

TABLE	
SHEET N <sup>o</sup>	PAGES
1	1-5
2	6-9
3	10-14

SAN DIMAS Bldg. Dist. No. 10

NOTE:

- Provide stakes on the property lines or property lines produced at right angles to the sewer line at the center line of each manhole.  
 No representative of the County Engineer will survey or layout any portion of the work. The owner or his authorized representative shall furnish the County Engineer with grade sheets and stations for all house laterals and Y branches and shall provide stakes for them at their proper locations with stationing plainly marked. Any change in location shall be requested in writing by the owner or his representative.  
 No revisions shall be made in these plans without the approval of the County Engineer.
1. Use standard manhole frames and covers, S-a-117.
  2. Use standard strength pipe except as noted.
  3. Use cement mortar for all vitrified clay pipe joints.
  4. Resurface all trench within paved area to meet L.A. County Road Dept. or Calif. State Highway Dept. requirements in accordance with permit.
  5. Encase four feet of sewer at points of interference with poles, S-a-119.
  6. House laterals to be constructed with inverts at property line.....feet below curb grade except as noted.
  7. All structures shall be brick sewer structures, S-a-104, except as noted.
  8. For allowable leakage test, use Formula No. ...., Spec's., Sec. 51.



INDEX MAP  
 SCALE: 1"=400'  
 TRACT N° 20499  
 PC 3230 J.N. 1100.01

CONNECTION CHARGES  
 AS INDICATED  
 11-19-54

Checked 1-27-55 McLenin

PROFILE, ALIGNMENT AND GRADE OF  
 SANITARY SEWERS  
 TO BE CONSTRUCTED IN

P. C. 3230  
 J. N. 1100.01  
 PAGE 1

TRACT NO. 20499

PRIVATE CONTRACT NO. 3230

W. S. 47

Scale: VERT. 1"=4' HORIZ. 1"=40' NOV. 1954

PREPARED BY THE OFFICES OF  
 KARL TUTTLE ENGINEERING CO.

FOR LEGEND SEE PLAN NO. S-a-64

NOTE:

Grades to which this improvement is to be constructed are shown on plans and profiles. Grade points for top of curbs, center line of streets, or center line of alleys are shown by circles on profiles. At all points between designated points the grade shall be established so as to conform to a straight line drawn between said designated points. Elevations are in feet above U.S.G.S. datum or mean sea level.  
 This drawing and the data hereon are hereby made a part of the specifications. Work shall be constructed according to specifications on file in the office of the County Engineer and shall be prosecuted only in the presence of the County Engineer.  
 Before work can be started, the contractor must obtain a permit to excavate in County streets from the L.A. County Road Dept., 108 W. 2nd St., and make a deposit with the County Engineer, 733 L.A. County Engineering Building, sufficient to cover the cost of construction inspection and record plans.  
 Approval of this plan by the County of Los Angeles does not constitute a representation as to the accuracy of the location of or the existence or non-existence of any underground utility, pipe, or structure within the limits of this project. This note applies to all sheets.  
 If work is to be done in a State Highway, a permit must be obtained from the State of California, Division of Highways, 120 South Spring Street.

COUNTY OF LOS ANGELES, CALIFORNIA

Approved, William J. Fox, County Engineer

Approved, A. M. Rawn

*W. J. Fox*  
 Sanitation Engineer

*A. M. Rawn*  
 Chief Eng. Co. San. Dist. No. 22  
 Office Engineer

Checked by *R. B. Kuhn* 11-19-54  
 Office of County Engineer, Dep. C. & H. No. 7860.

19,627

(14)

PC 3230  
 J.N. 1100.01  
 B.C. 3230  
 O.C. 3230

ON MILEAGE SPECIFIC BASIS  
DATE: 11/10/01  
DRAWN BY: J.M. JONES  
CHECKED BY: J.M. JONES

(see next page)

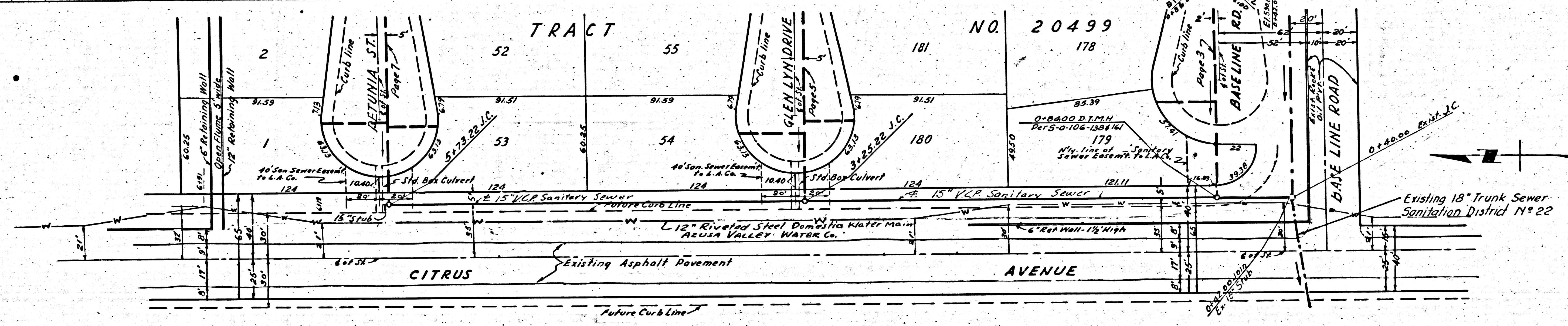
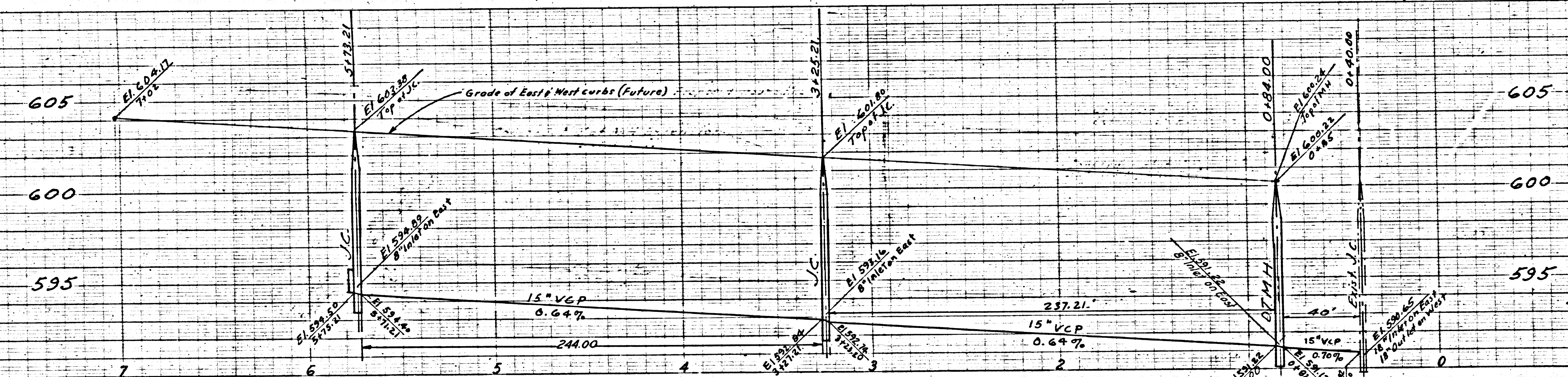
Trim Line

ON MILEAGE SPECIFIC BASIS  
DATE: 11/10/01  
DRAWN BY: J.M. JONES  
CHECKED BY: J.M. JONES

P.C. 3230  
J.M. 1100.01  
PAGE 2

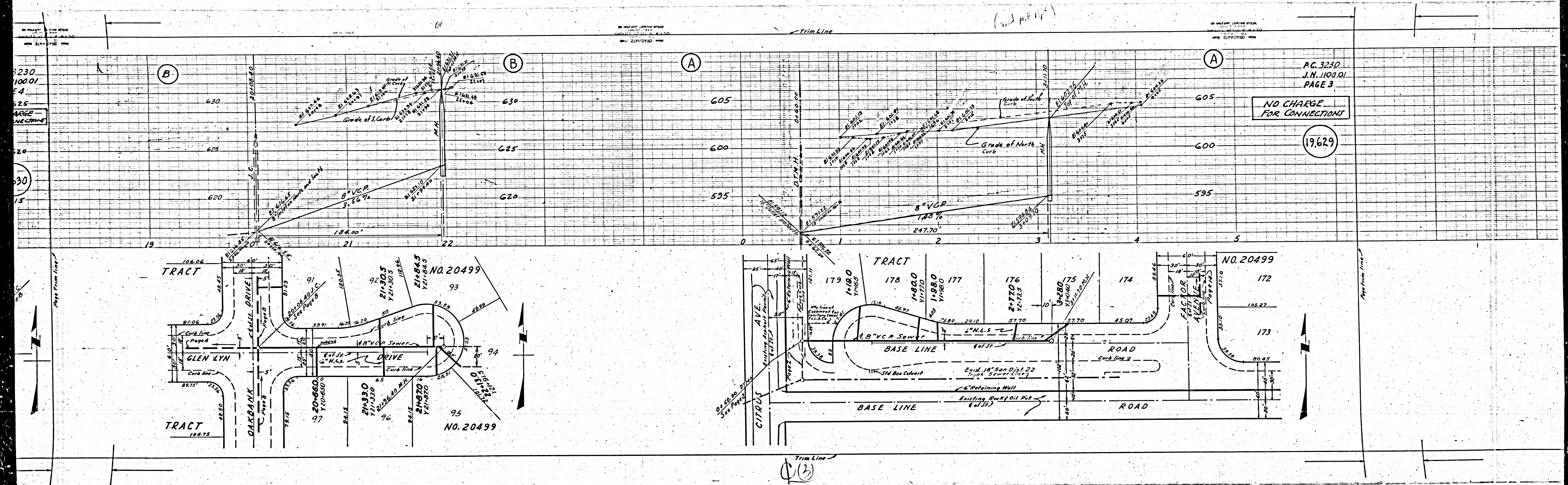
NO CHARGE  
FOR CONNECTIONS

19,628



Trim Line

124



P.C. 3230  
 J.N. 1102.01  
 PAGE 3

NO CHARGE  
 FOR CONNECTIONS

19629

(3)

P.C. 3230  
J.N. 1100.01  
PAGE 5  
G15

NO CHARGE  
FOR CONNECTIONS

19631

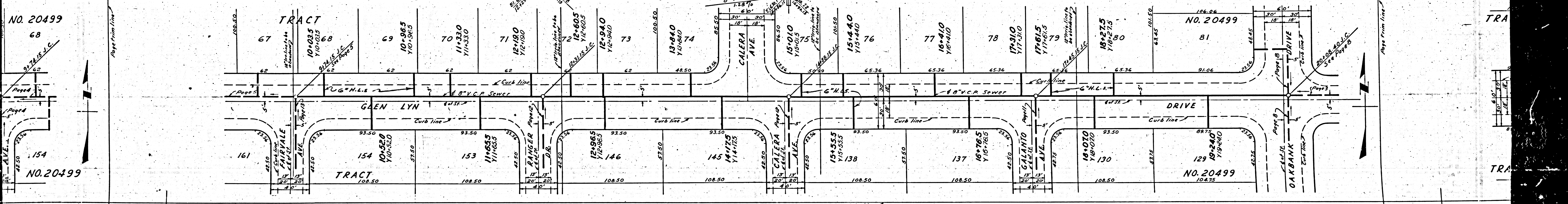
P.C. 3230  
J.N. 1100.01  
PAGE 4  
G25

NO CHARGE  
FOR CONNECTIONS

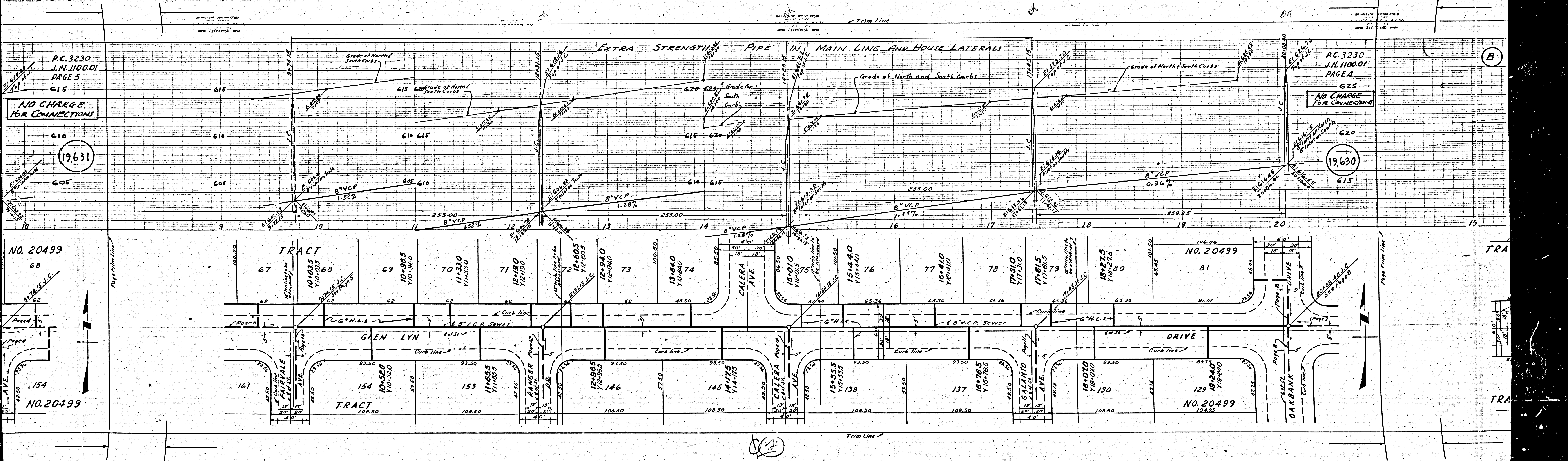
19630

NO. 20499  
68

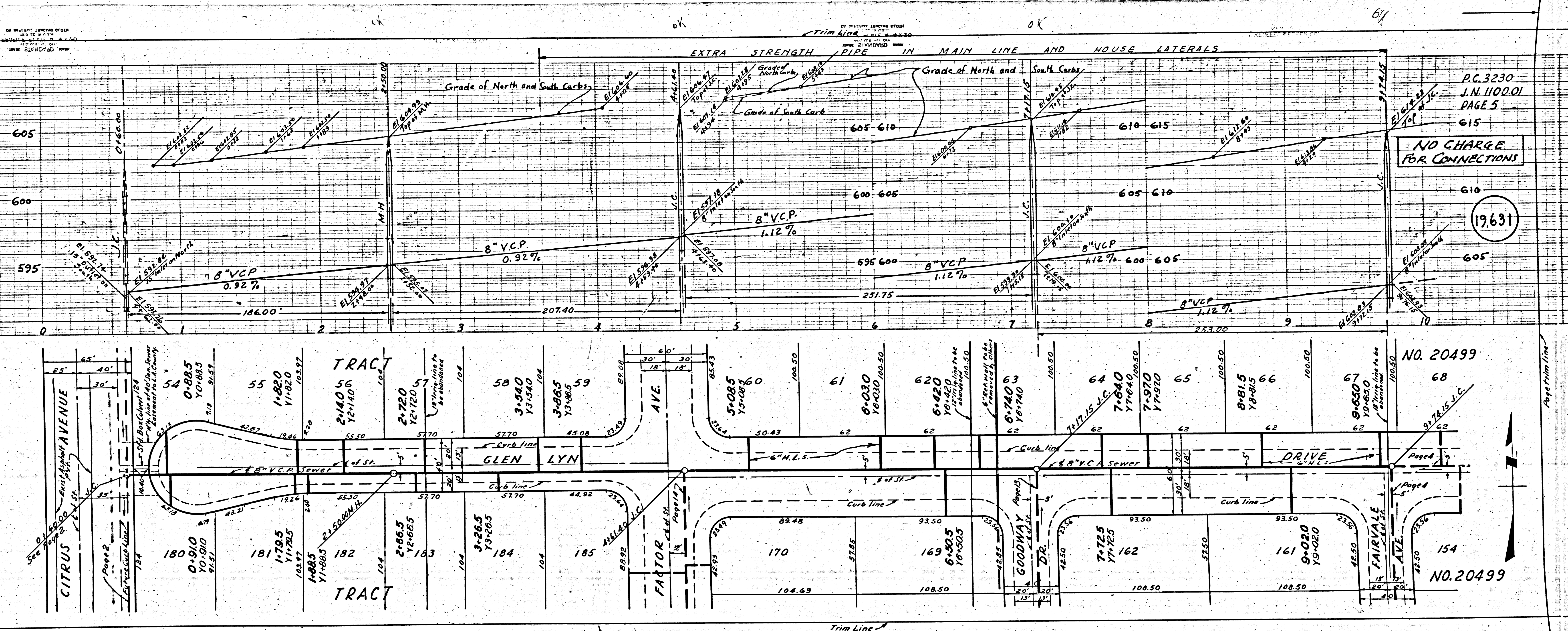
NO. 20499



EXTRA STRENGTH PIPE IN MAIN LINE AND HOUSE LATERALS



P.C. 3230



P.C. 3230  
I.N. 110001  
PAGE 5

NO CHARGE  
FOR CONNECTIONS

610  
605

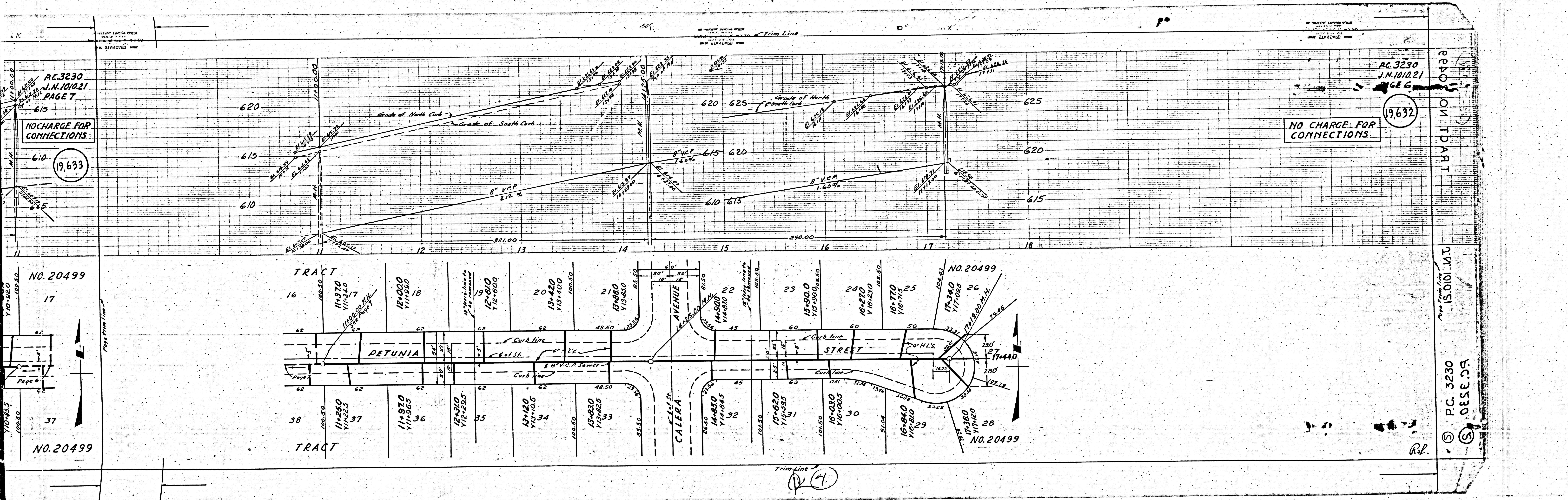
19631

610  
605

NO. 20499

NO. 20499

Q1



PC. 3230  
J.N. 1010.21  
PAGE 7

NO CHARGE FOR CONNECTIONS

19,633

PC. 3230  
J.N. 1010.21  
PAGE 6

19,632

NO CHARGE FOR CONNECTIONS

NO. 20499

17

Page 6

37

NO. 20499

TRACT

PETUNIA STREET

TRACT

NO. 20499

AVENUE

CALERA

STREET

CALERA

STREET

NO. 20499

NO. 20499

NO. 20499

NO. 20499

NO. 20499

NO. 20499

NO. 20499

NO. 20499

NO. 20499

REVISION PART

J.N. 1010.21

PC. 3230  
C. 0533.23

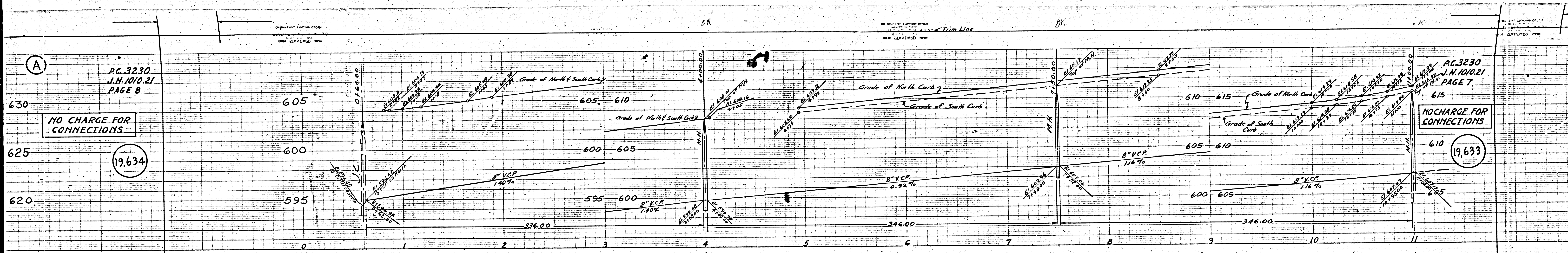
Rel.

(A)

AC. 3230  
J.N. 1010.21  
PAGE B

NO CHARGE FOR CONNECTIONS

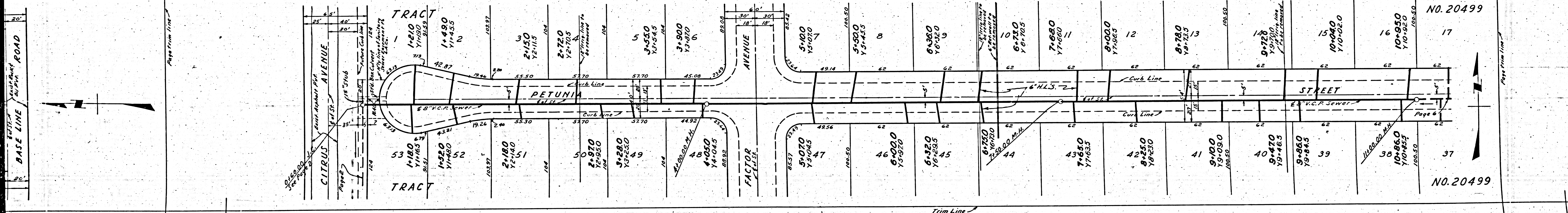
19,634



AC. 3230  
J.N. 1010.21  
PAGE 7

NO CHARGE FOR CONNECTIONS

19,633



NO. 20499

NO. 20499

(13)

P.C. 3230  
J.N. 1010.21  
PAGE 9

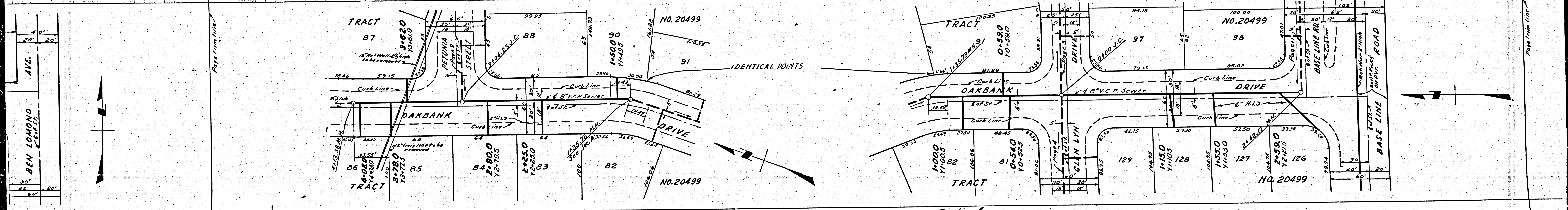
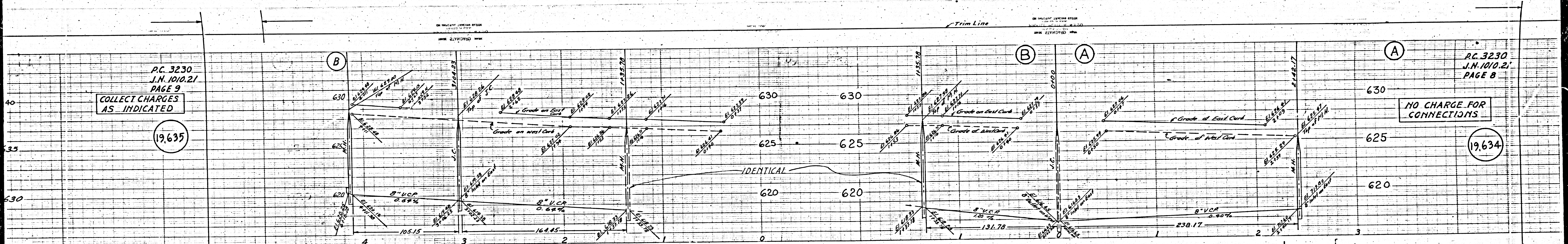
COLLECT CHARGES  
AS INDICATED

19,635

P.C. 3230  
J.N. 1010.21  
PAGE 8

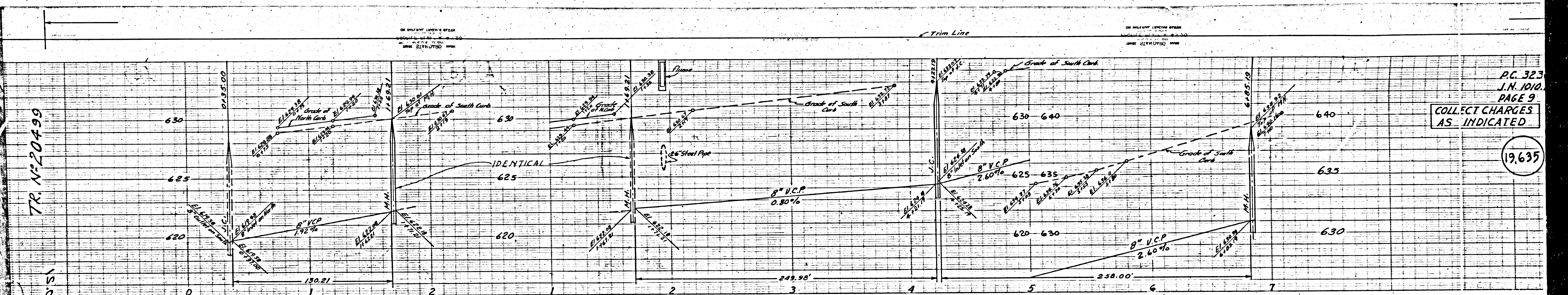
NO CHARGE FOR  
CONNECTIONS

19,634



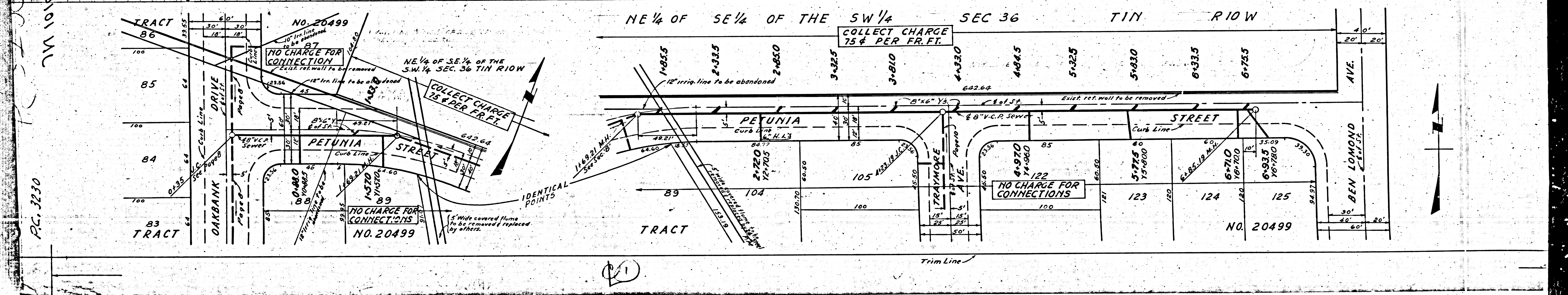
20





P.C. 323  
 J.M. 1010.  
 PAGE 9  
 COLLECT CHARGES  
 AS INDICATED

19,635

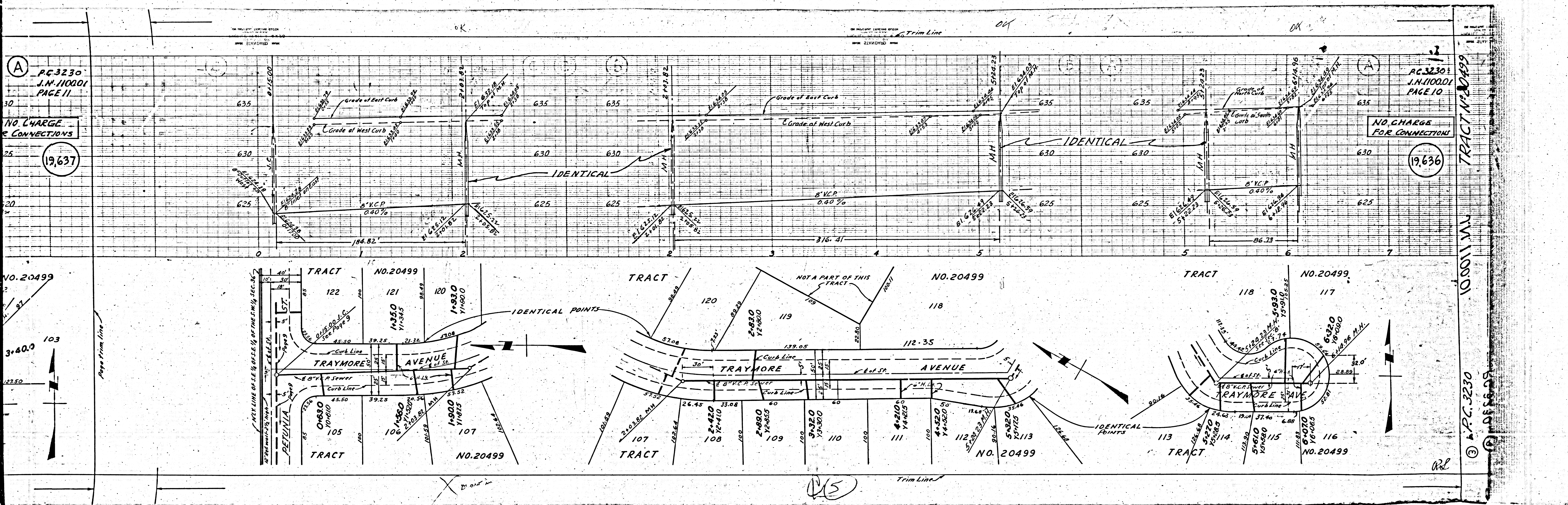


TR. NO. 20499

J.M. 1010/51

P.C. 3230

21



A  
 PC 3230  
 J.N. 110001  
 PAGE 11  
 NO. CHARGE  
 FOR CONNECTIONS  
 19.637

PC 3230  
 J.N. 110001  
 PAGE 10  
 NO. CHARGE  
 FOR CONNECTIONS  
 19.636

NO. 20499  
 3+40.0  
 103  
 2250  
 MY LINE OF L.E. 1/4 OF L.E. 1/4 OF THE 1/4 SEC. 26  
 PENNSYLVANIA  
 Paper Trim Line

NO. 20499  
 10001 MV  
 TRACT NO. 20499  
 © P.C. 3230  
 © 1963

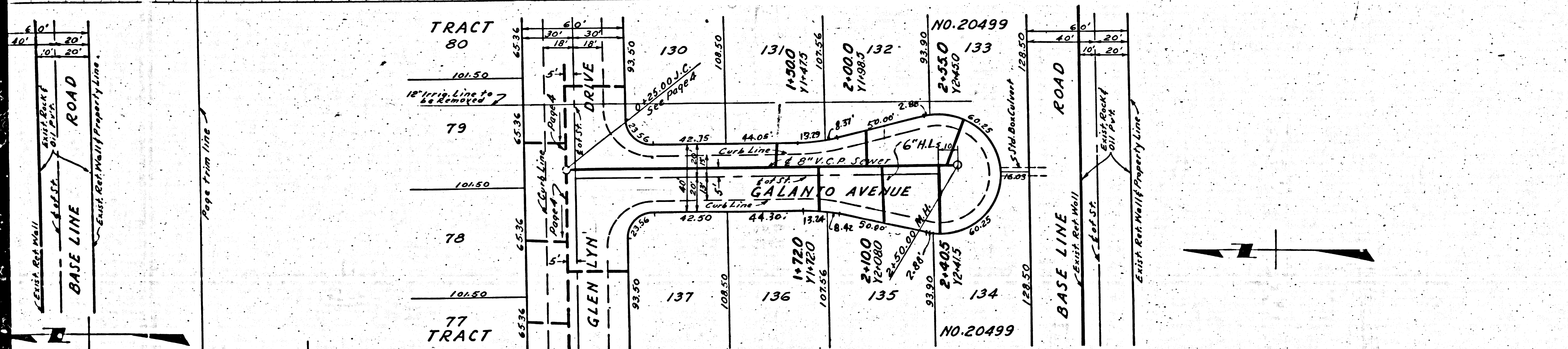
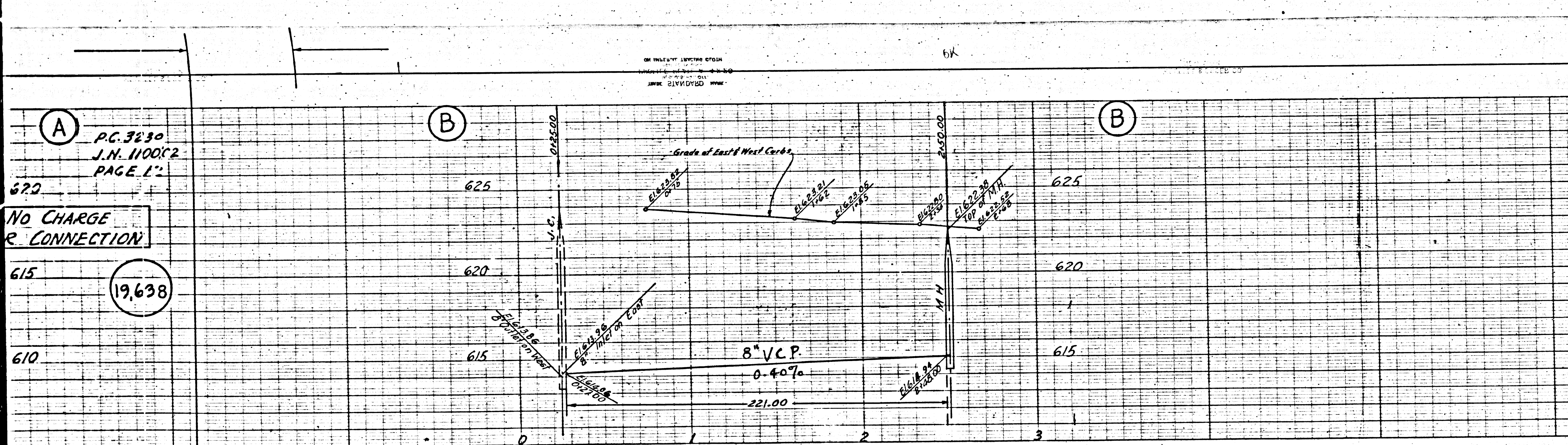
115

ARL

PC 3230  
J.N. 110002  
PAGE 11

NO CHARGE  
FOR CONNECTION

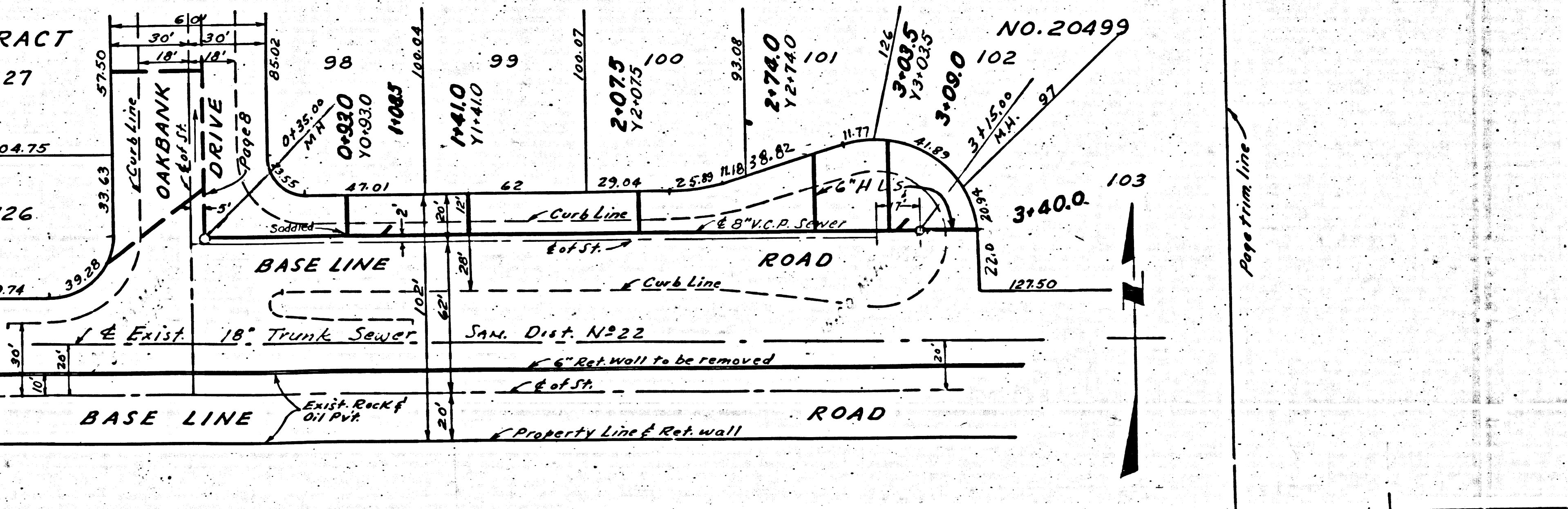
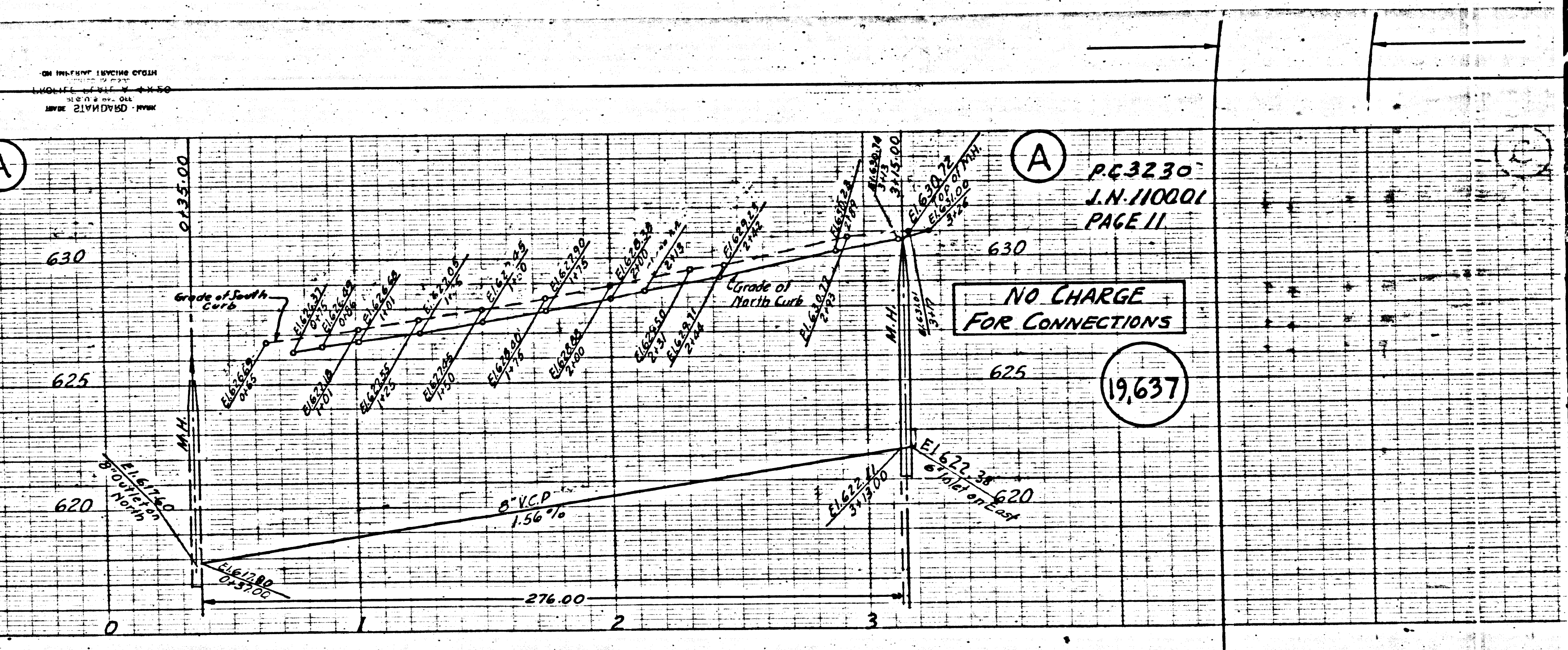
19,638



PC 3230  
J.N. 110001  
PAGE 11

NO CHARGE  
FOR CONNECTIONS

19,637

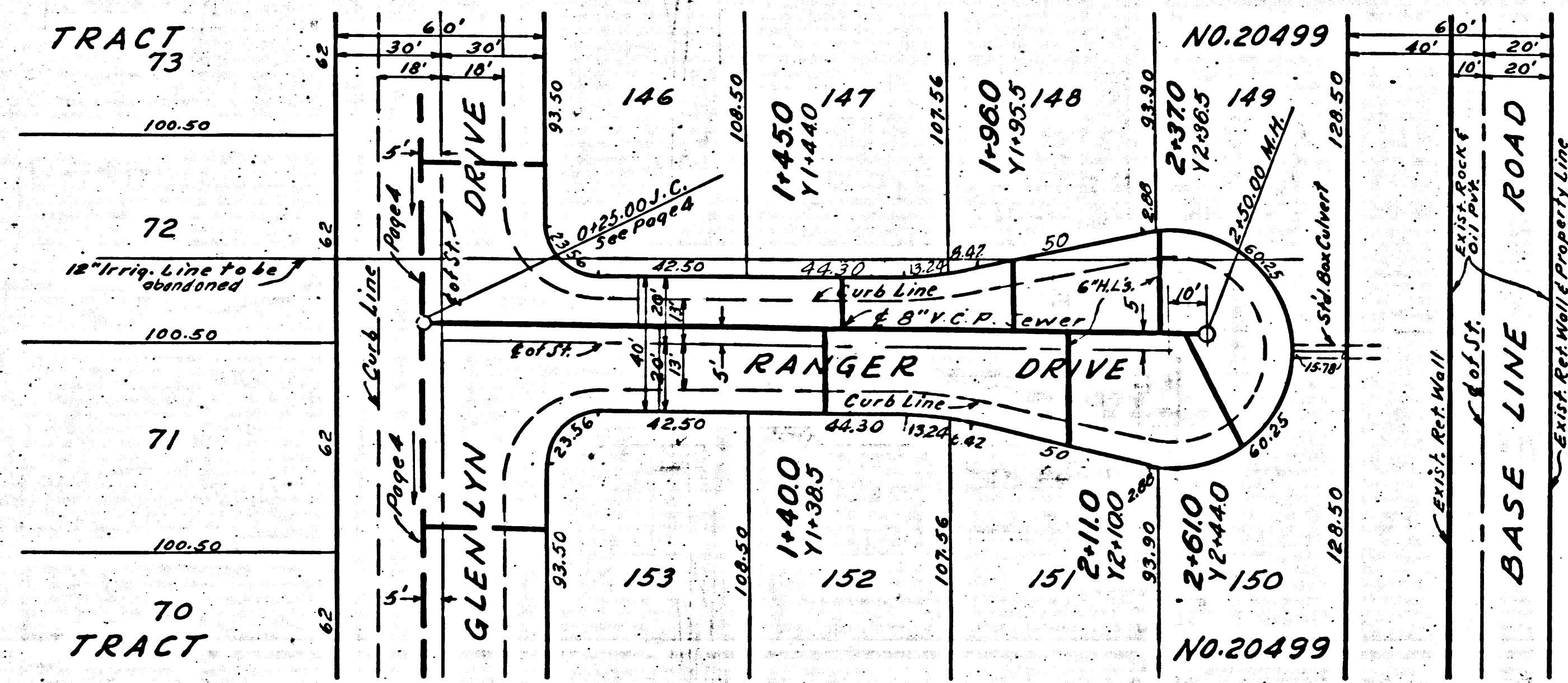
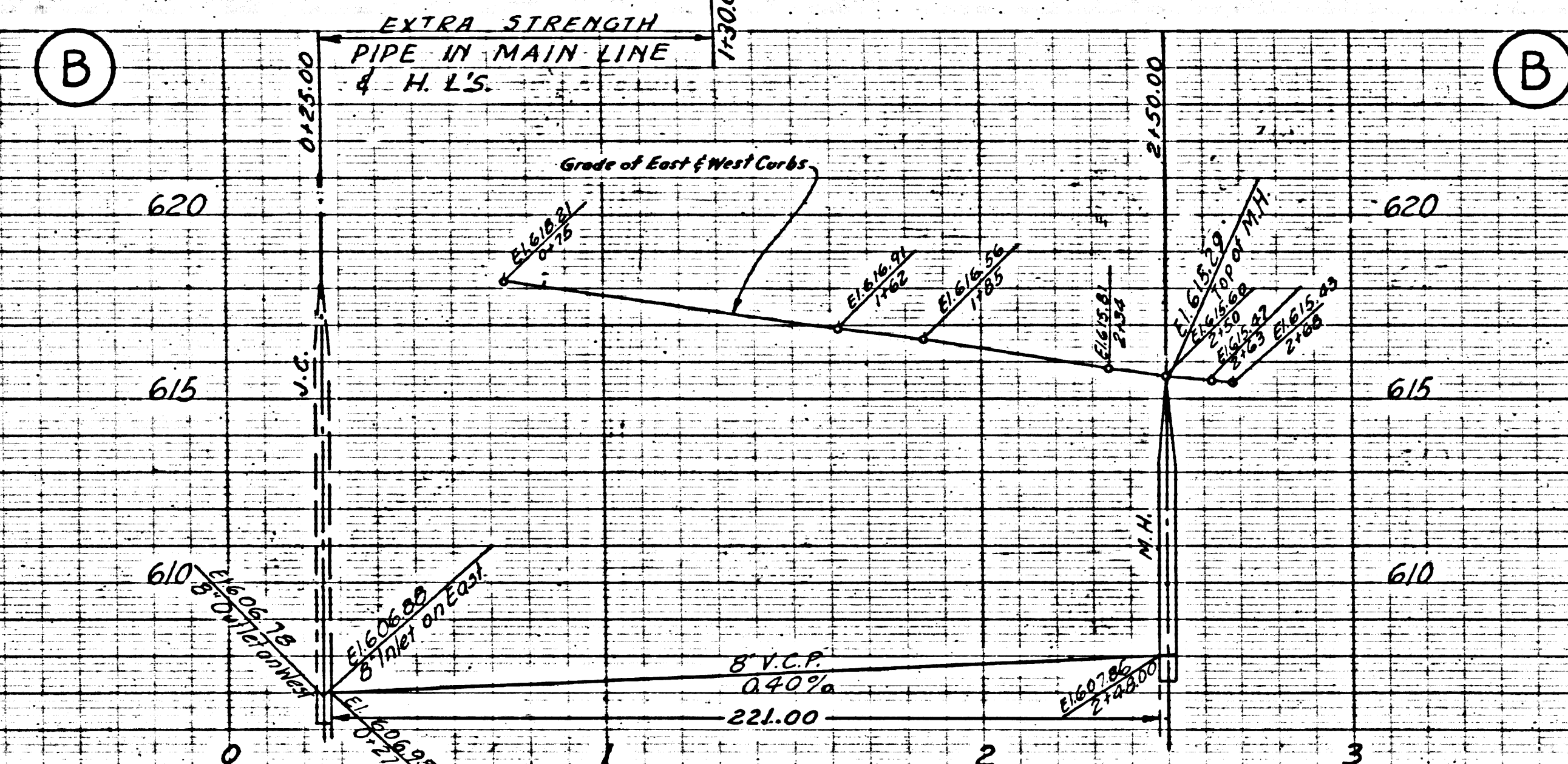


(14)

PC.3230  
J.N.1100.01  
PAGE 13

NO CHARGE  
FOR CONNECTIONS

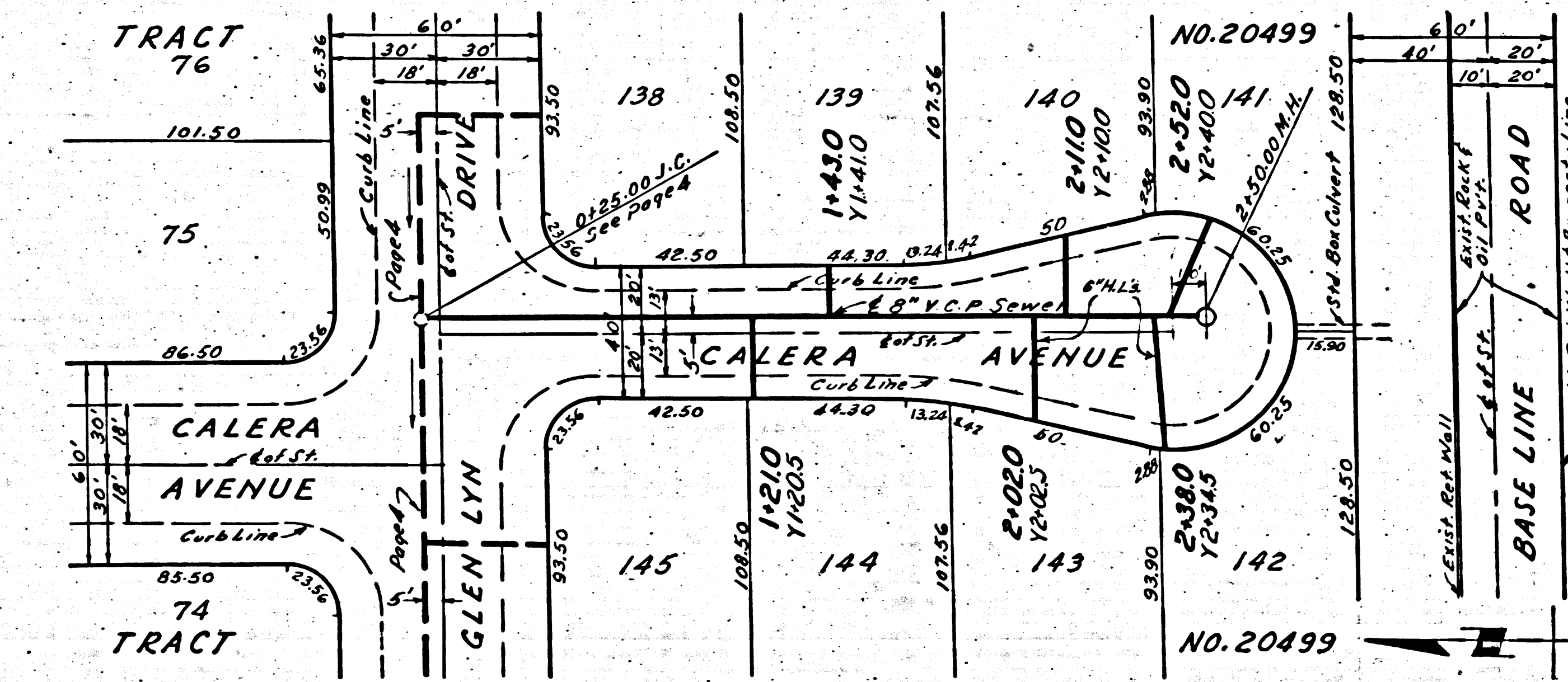
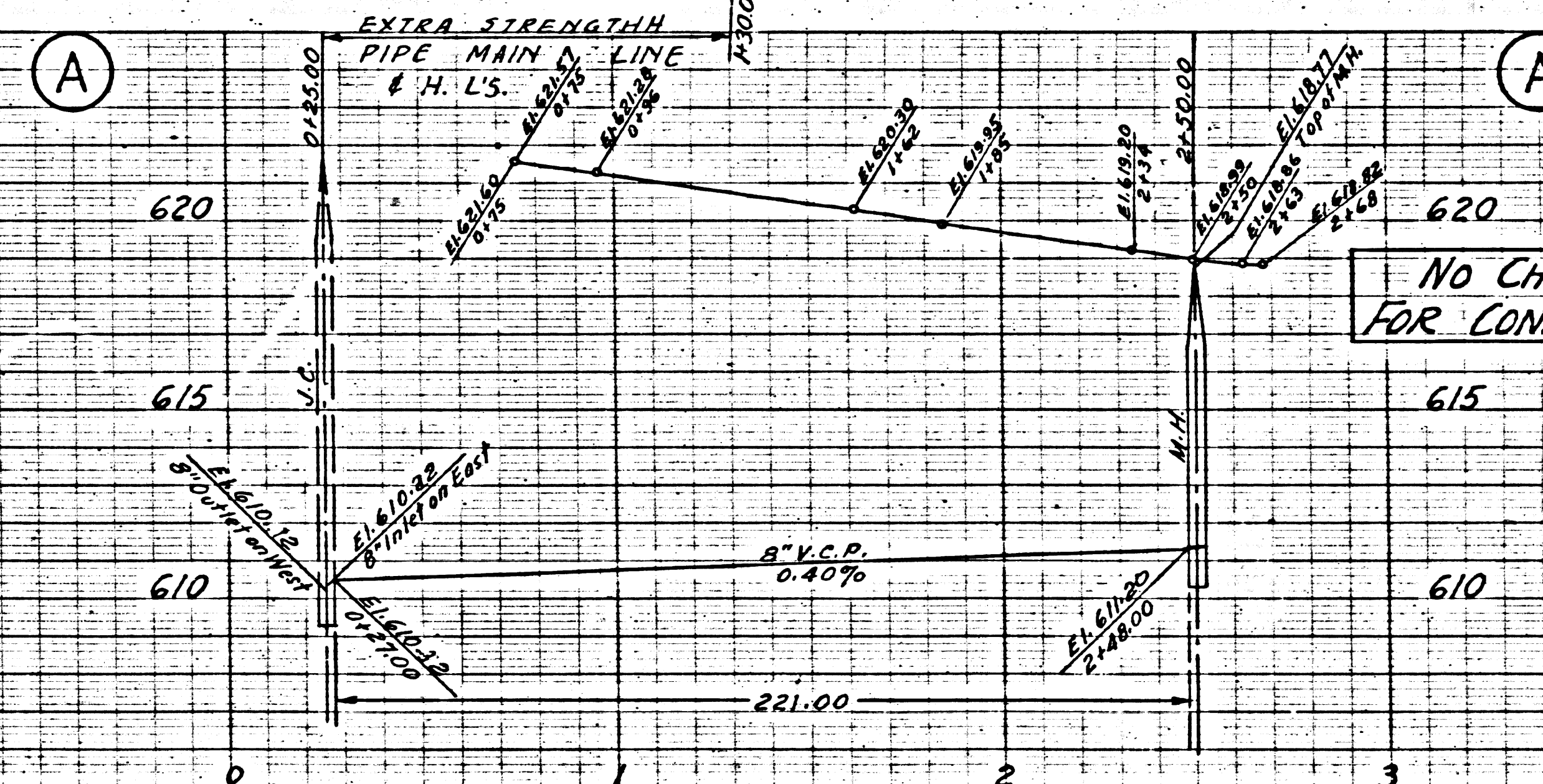
19,639



PC.3230  
J.N.1100.02  
PAGE 12

NO CHARGE  
FOR CONNECTIONS

19,638

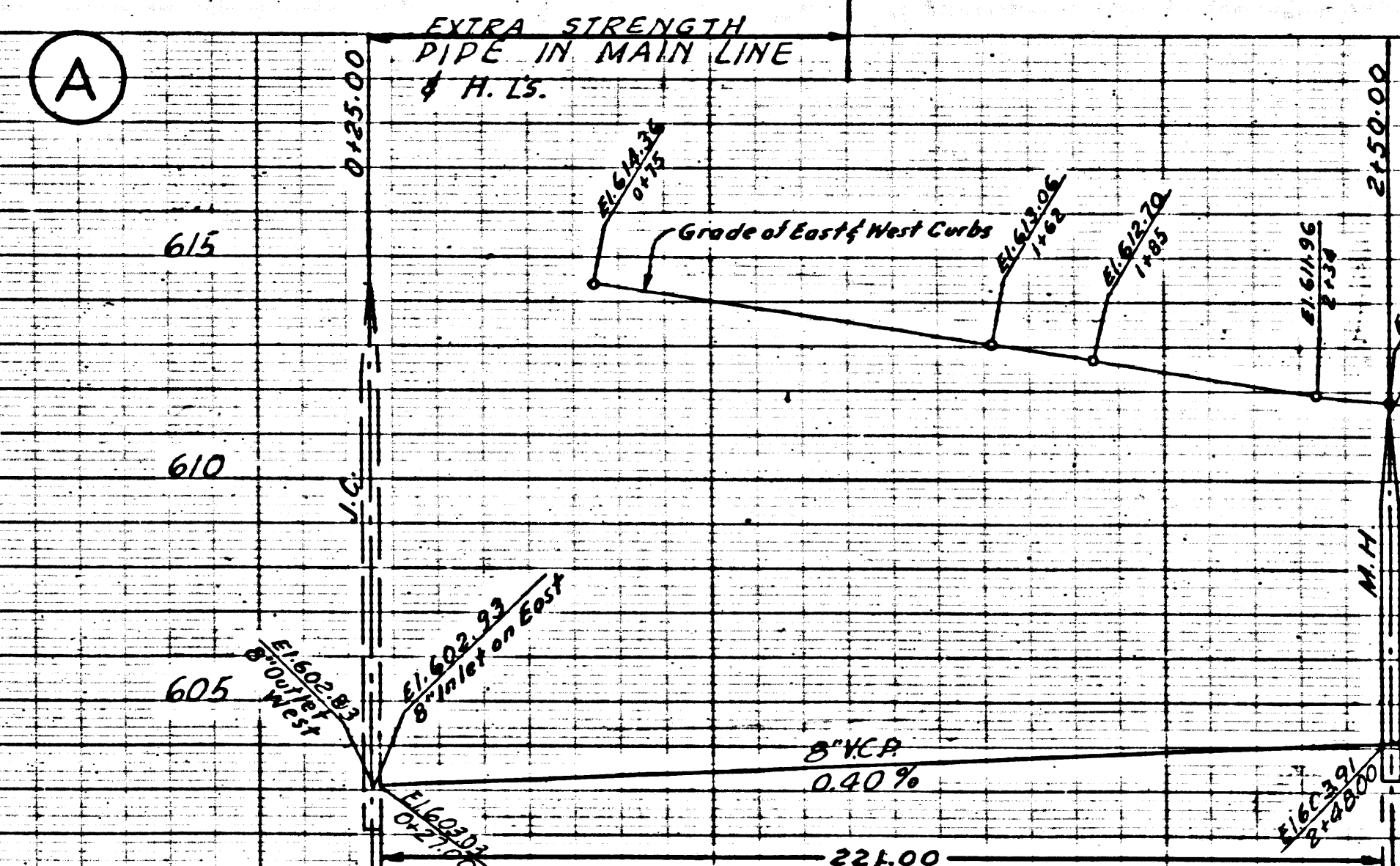
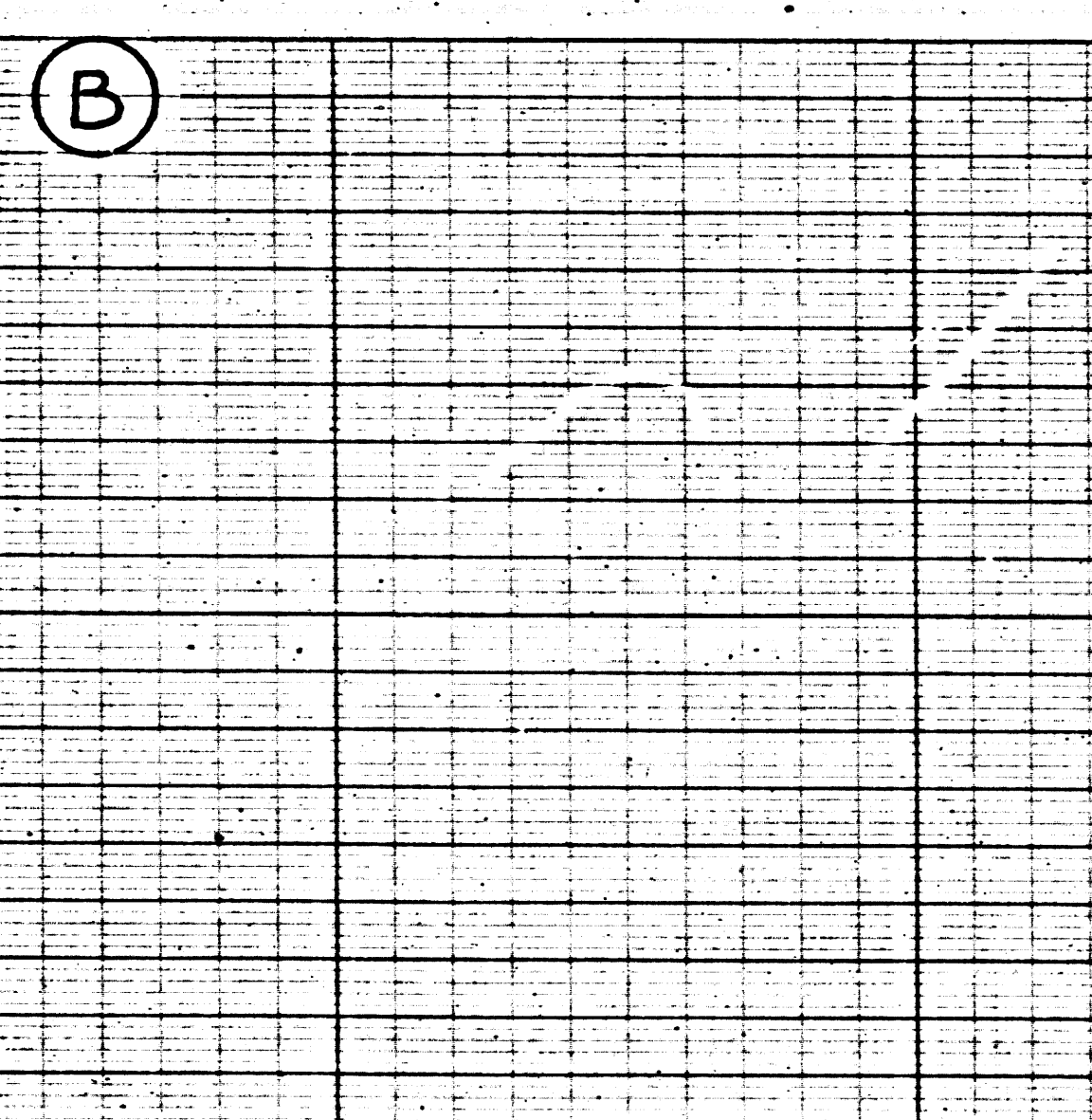
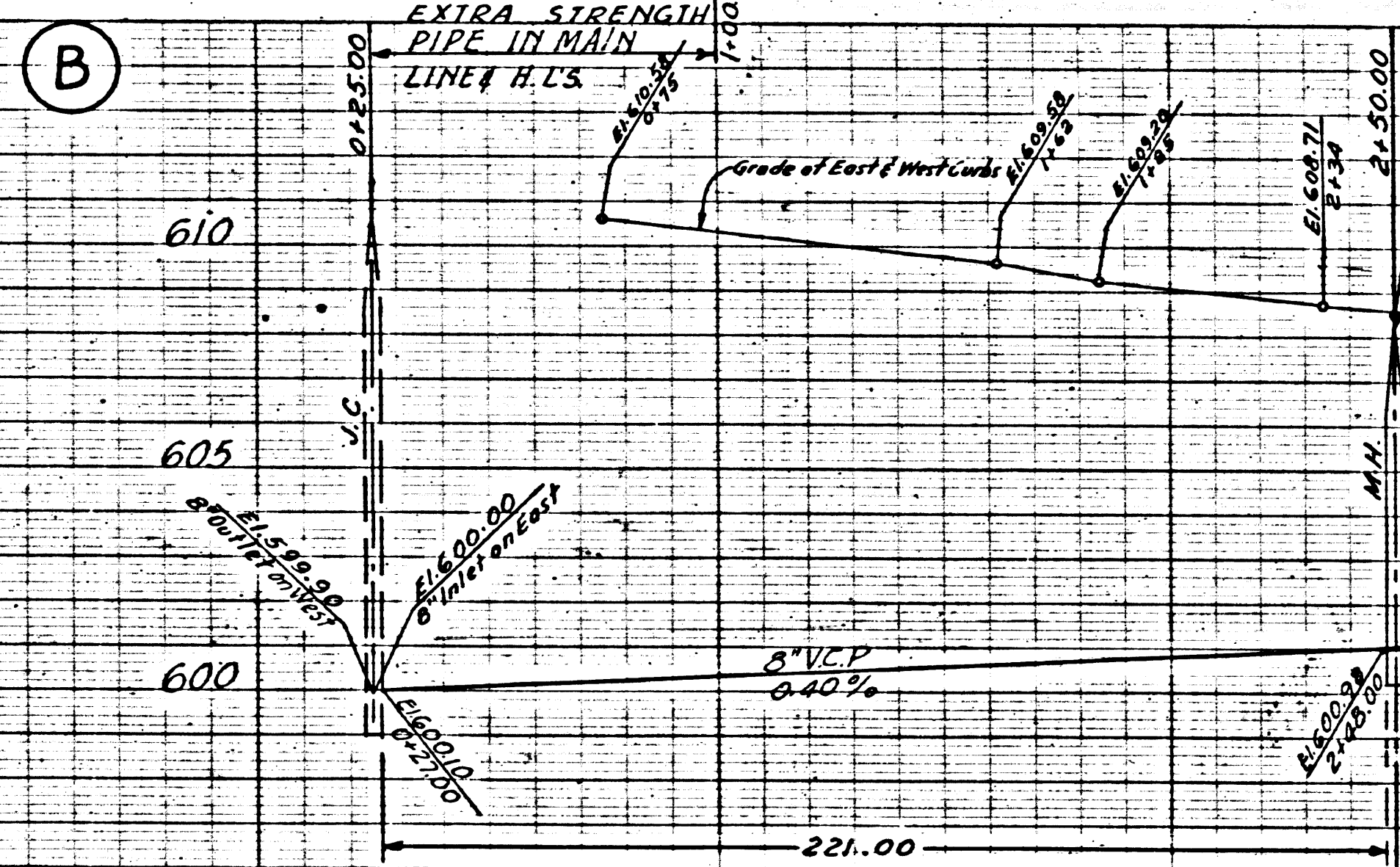


(13)

PG. 3230  
J.N. 1010.21  
PAGE 14

No CHARGE  
FOR CONNECTIONS

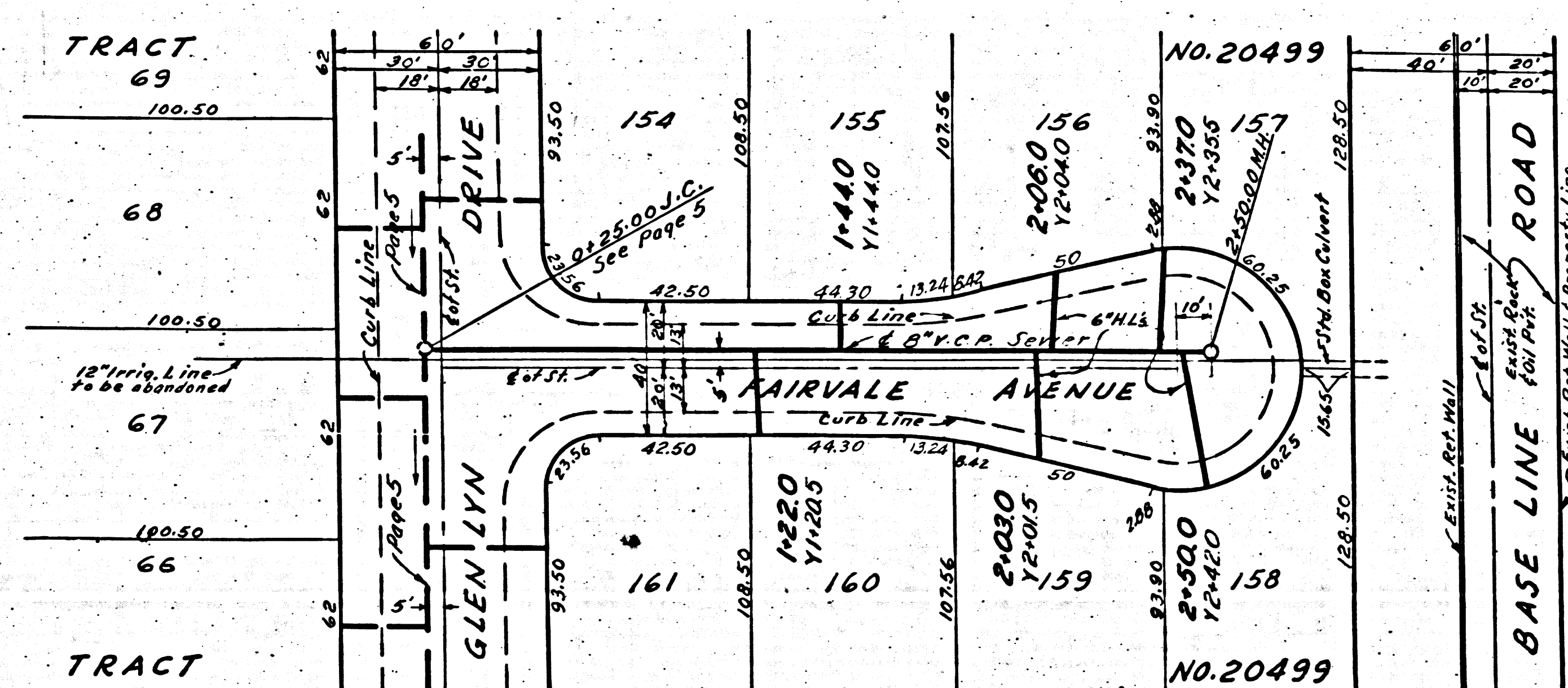
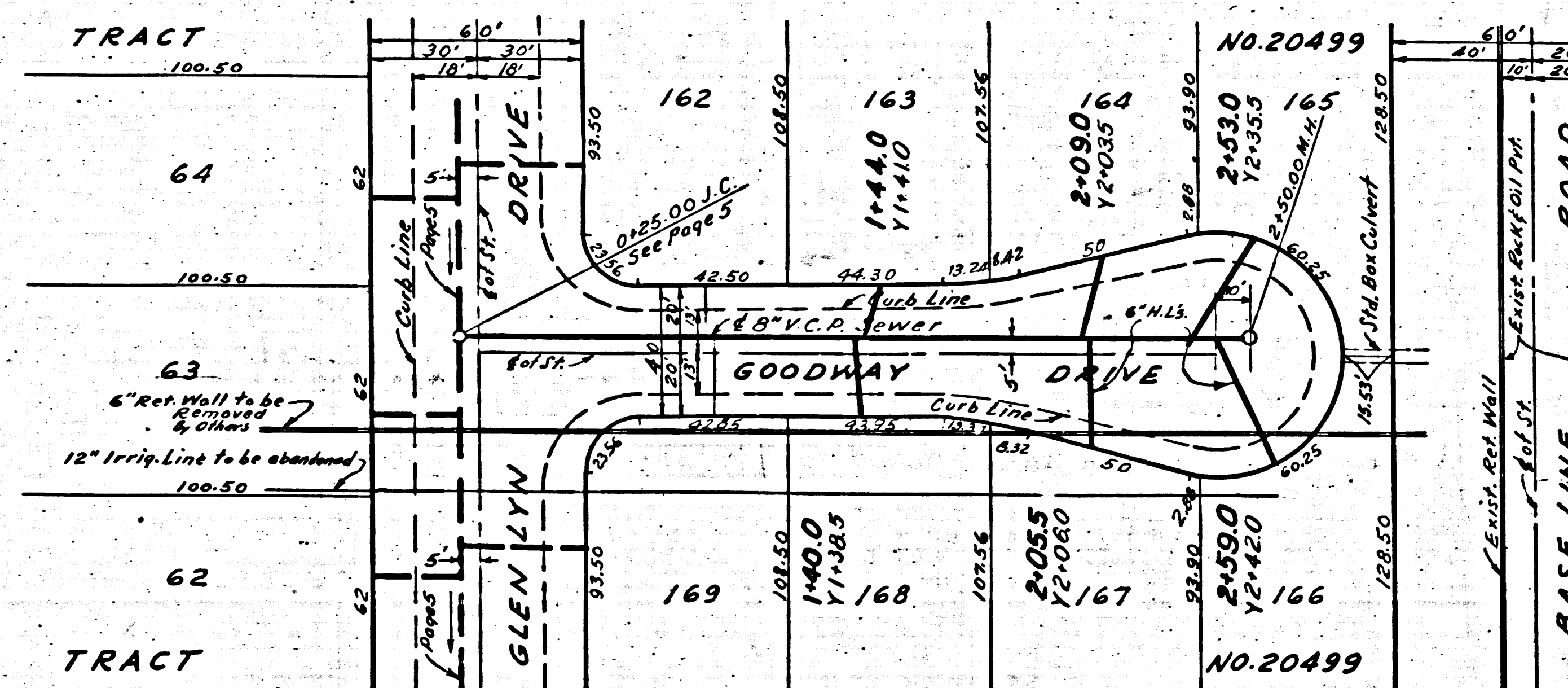
19,640

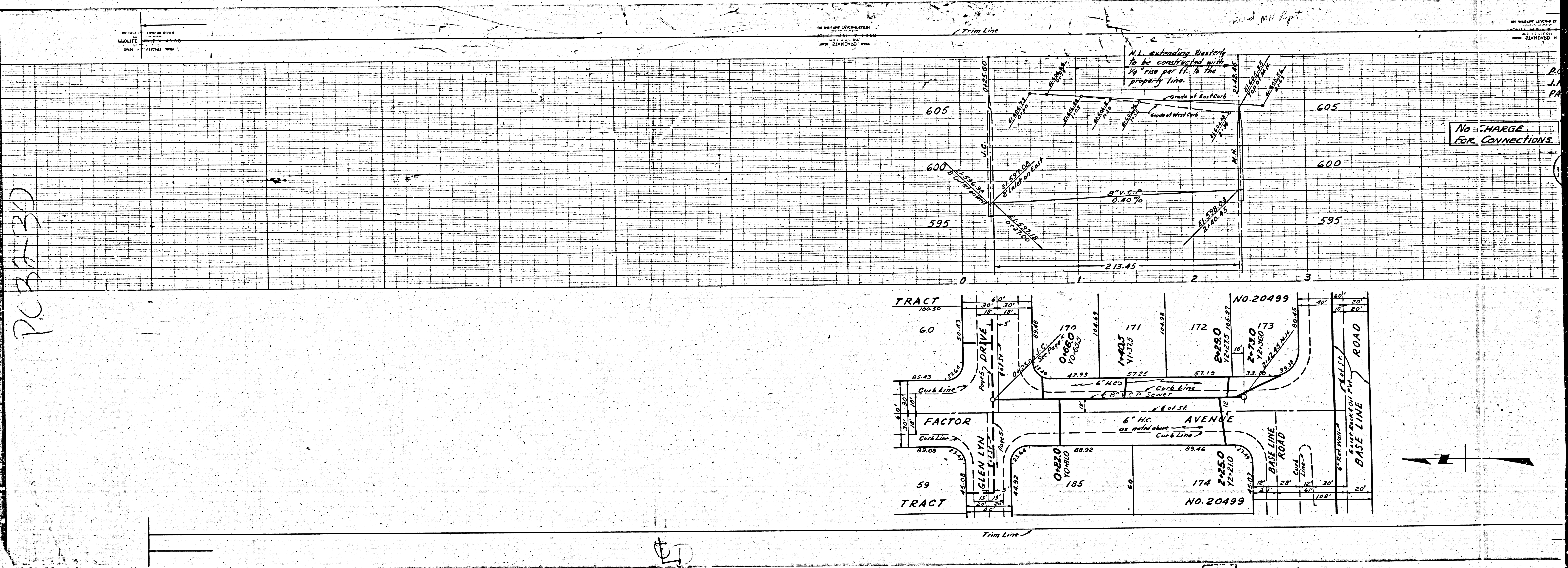


No CHARGE  
FOR CONNECTIONS

19,639

PG. 3230  
J.N. 1010.21  
PAGE 13





PC 327-30

ED