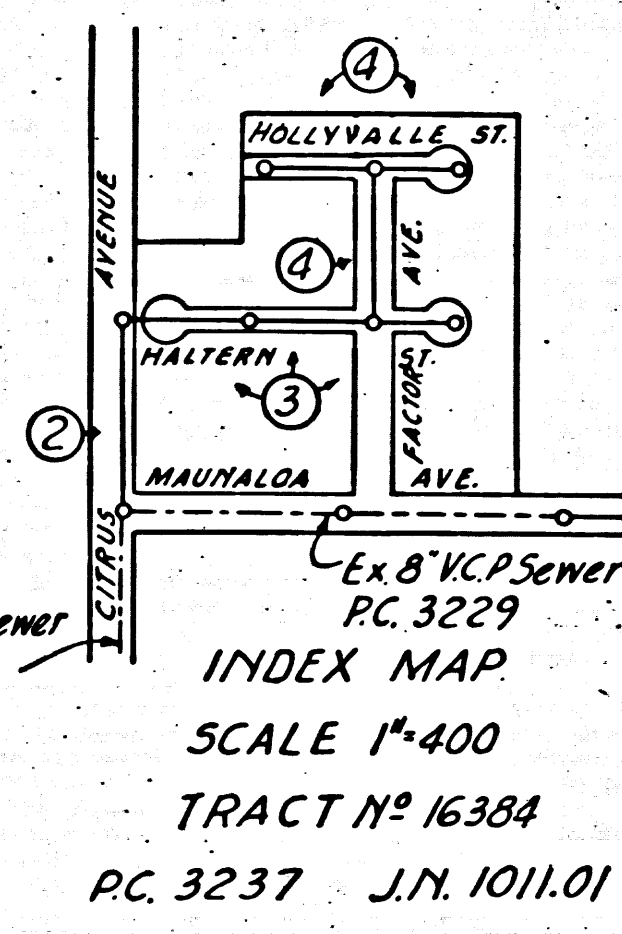


BENCH MARK:
 L & T 22' North of Northeast curb return at
 Citrus Avenue and Baseline Road Elevation 600.67



INDEX MAP
 SCALE 1"=400
 TRACT No 16384
 P.C. 3237 J.N. 1011.01

SAN DIMAS Bldg. Dist. No. 10

- NOTE:
 Provide stakes on the property lines or property lines produced at right angles to the sewer line at the center line of each manhole.
 No representative of the County Engineer will survey or layout any portion of the work.
 The owner or his authorized representative shall furnish the County engineer with grade sheets and stations for all house laterals and Y branches and shall provide stakes for them at their proper locations with stationing plainly marked. Any change in location shall be requested in writing by the owner or his representative.
 No revisions shall be made in these plans without the approval of the County Engineer.
1. Use standard manhole frames and covers, S-a-117.
 2. Use standard strength pipe except as noted.
 3. Use cement mortar for all vitrified clay pipe joints.
 4. Resurface all trench within paved area to meet L.A. County Road Dept. or Calif. State Highway Dept. requirements in accordance with permit.
 5. Encase four feet of sewer at points of interference with poles, S-a-119.
 6. House laterals to be constructed with inverts at property line.....6.....feet below curb grade except as noted.
 7. All structures shall be brick sewer structures, S-a-104.
- R For allowable leakage test, use Formula No., Specs., Sec. 51.

SHEET	PAGE
1	1-2

NO CHARGE FOR CONNECTIONS
Repulbas 11-18-54

NOTE:
 LOTS 34 THRU 42 ARE SERVED BY SEWER
 CONSTRUCTED UNDER P.C. 3229

checked 1-13-55 *McFarren*

PROFILE, ALIGNMENT AND GRADE OF
 SANITARY SEWERS
 TO BE CONSTRUCTED IN
 TRACT No 16384

P. C. 3237
 J. N. 1011.01
 PAGE 1

PRIVATE CONTRACT NO. 3237
 W. S. 47

Scale: VERT. 1"=4' HORIZ. 1"=40'
 PREPARED IN THE OFFICES OF
 KARL TUTTLE ENGINEERING CO.
Harold J. Tuttle, M.C.S.A. Reg. C.E. No. 7668
 FOR LEGEND SEE PLAN NO. S-a-64

NOTE:
 Grades to which this improvement is to be constructed are shown on plans and profiles. Grade points for top of curbs, center line of streets, or center line of alleys are shown by circles on profiles. At all points between designated points the grade shall be established so as to conform to a straight line drawn between said designated points.
 Elevations are in feet above U.S.G.S. datum or mean sea level.
 This drawing and the data hereon are hereby made a part of the specifications.
 Work shall be constructed according to specifications on file in the office of the County Engineer and shall be prosecuted only in the presence of the County Engineer.
 Before work can be started, the contractor must obtain a permit to excavate in County streets from the L.A. County Road Dept., 108 W. 2nd St., and make a deposit with the County Engineer, 733 L.A. County Engineering Building, sufficient to cover the cost of construction inspection and record plans.
 Approval of this plan by the County of Los Angeles does not constitute a representation as to the accuracy of the location of or the existence or non-existence of any underground utility, pipe, or structure within the limits of this project. This note applies to all sheets.
 If work is to be done in a State Highway, a permit must be obtained from the State of California, Division of Highways, 120 South Spring Street.

COUNTY OF LOS ANGELES, CALIFORNIA
 Approved, William J. Fox, County Engineer
 Approved, A. M. Rawn
 CHIEF ENGINEER, SAN. DIST. NO. 22
A. P. Collins Sanitation Engineer
A. M. Rawn Office Engineer
 Checked by *Repulbas 11-18-54*
 Office of County Engineer, Reg. C. E. No. 7860

1959

P.C. 3237
 J.N. 1011.01
 TRACT No 16384
 SANITARY SEWERS

R.S.

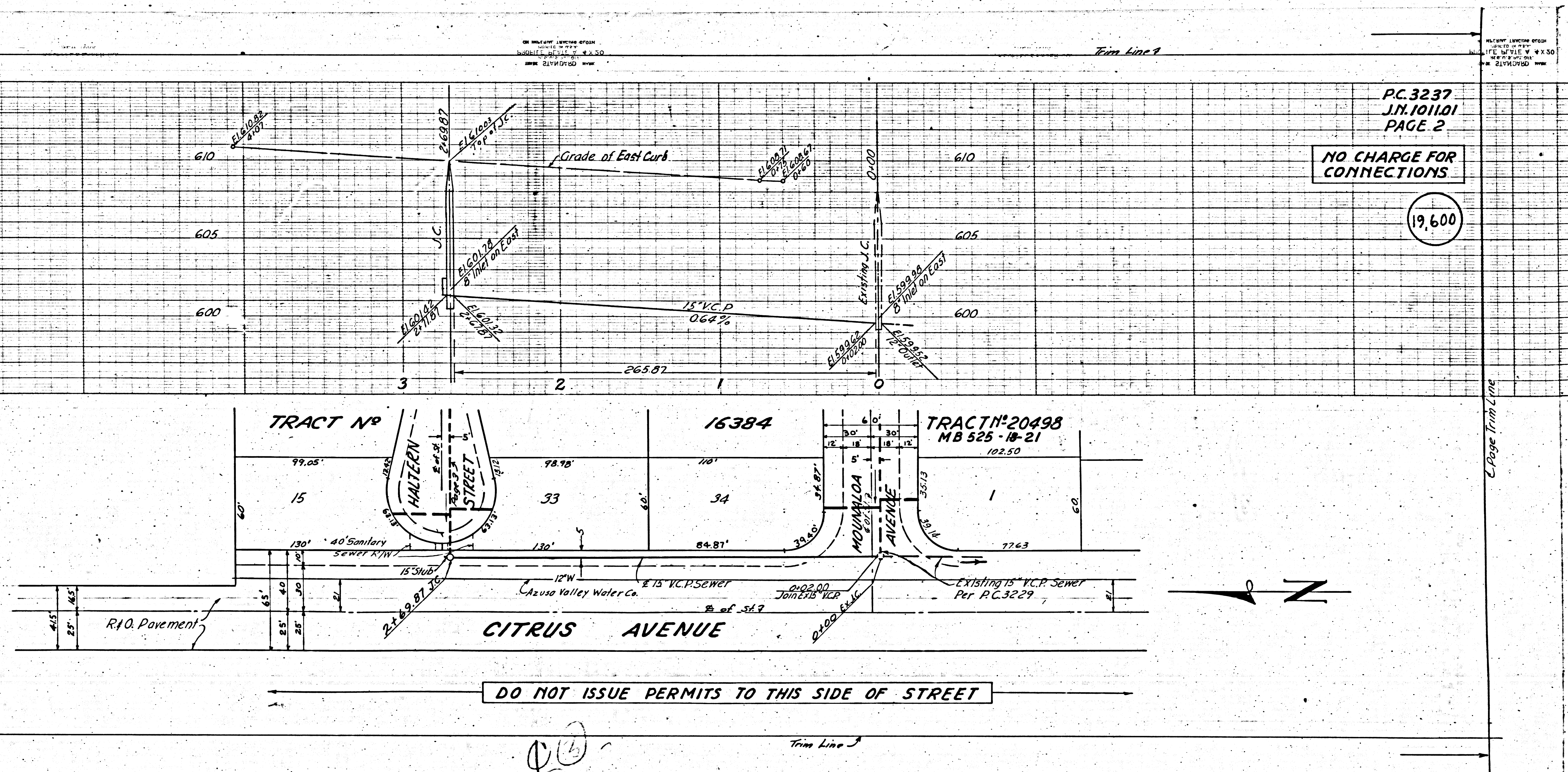
D.H. Trim Line

3237
1011.01
PAGE 3

NO CHARGE FOR CONNECTIONS

19,601

Page 19,601



PC 3237
JN 1011.01
PAGE 2

NO CHARGE FOR CONNECTIONS

19,600

Page 19,600

PC.3237
J.N. 10/11/01
PAGE 4

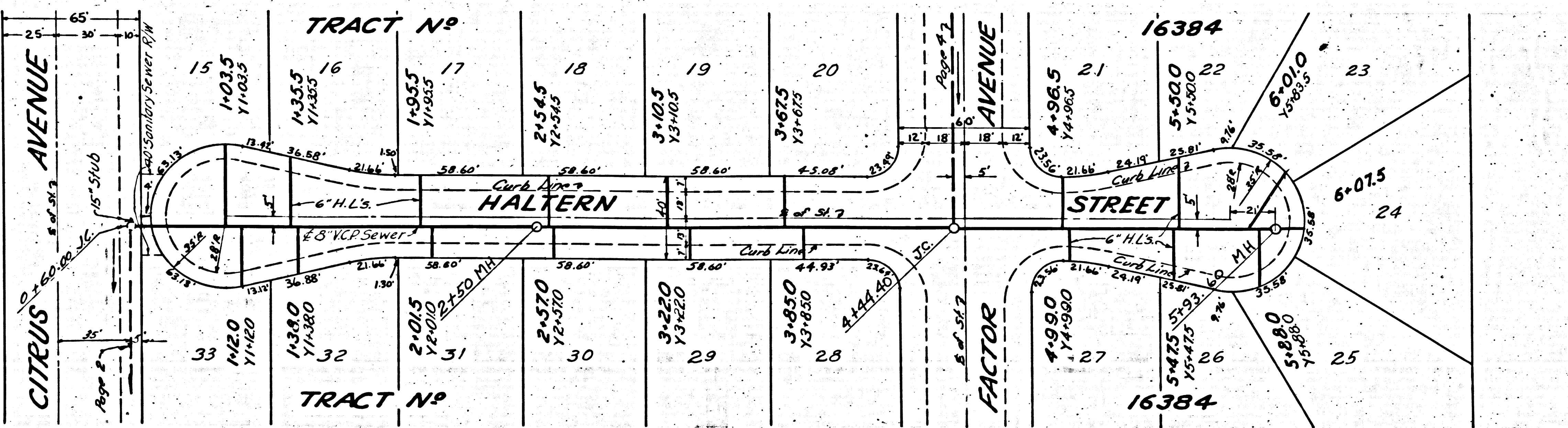
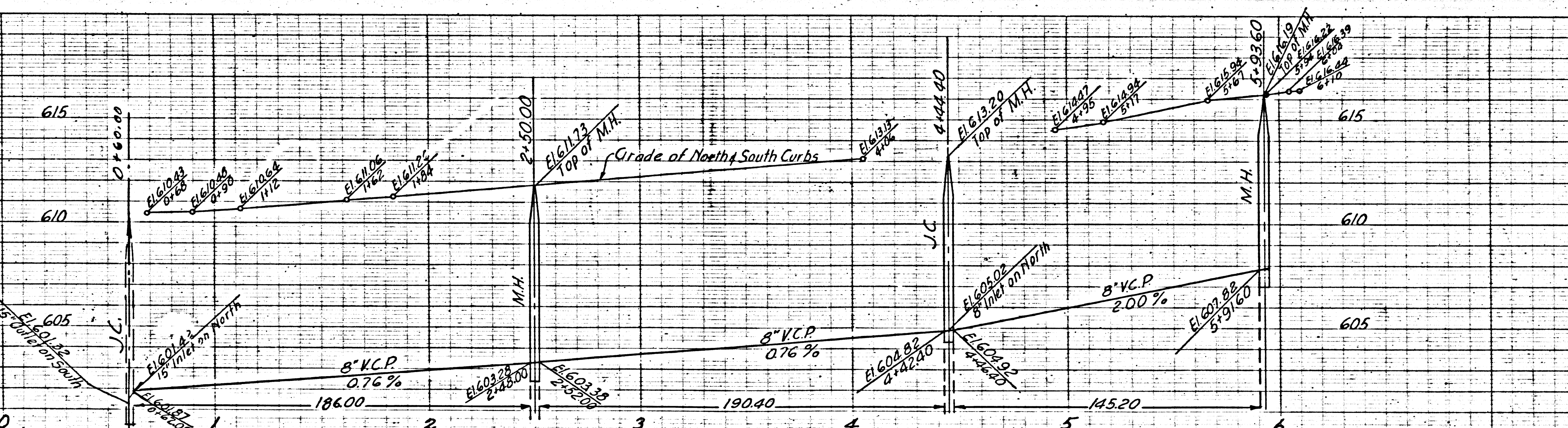
PC.3237
J.N. 10/11/01
PAGE 3

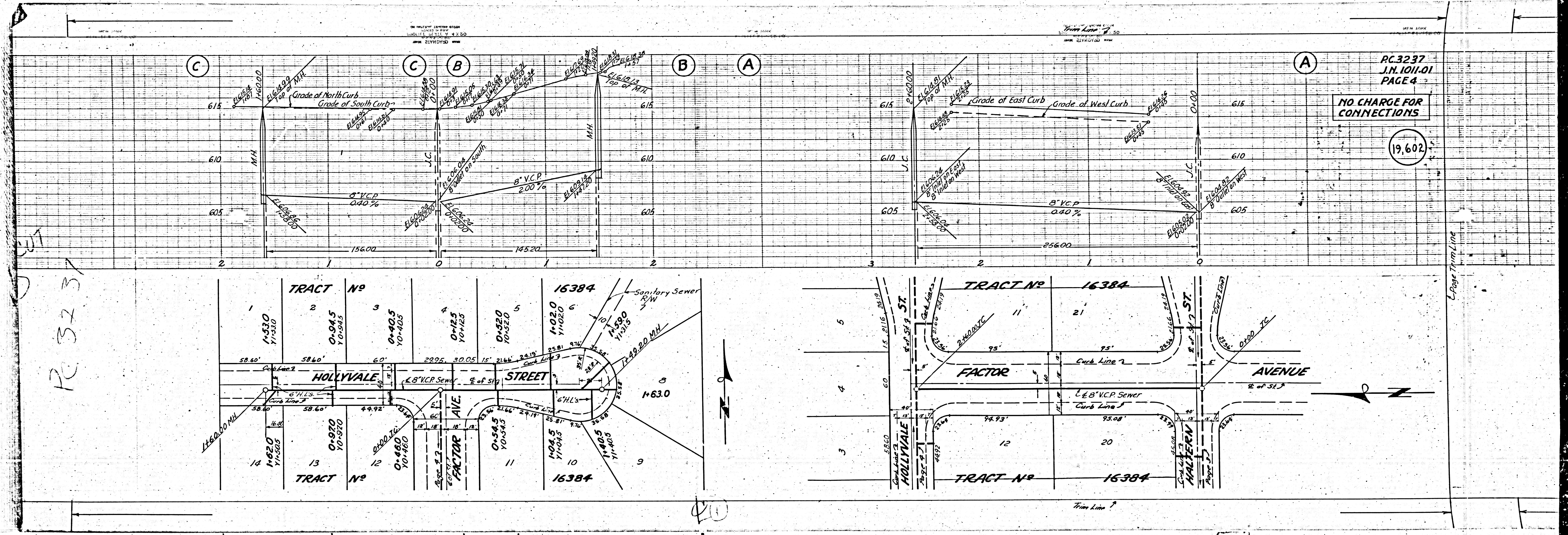
NO CHARGE FOR CONNECTIONS

NO CHARGE FOR CONNECTIONS

19,602

19,601





PC 3237

PC 3237
J.N. 10/1.01
PAGE 4

NO CHARGE FOR CONNECTIONS

19,602

20

Page Thru Line