

Trim Line
PUENTE BLDG. DIST. NO 2

NOTE:
 Provide stakes on the property lines or property lines produced at right angles to the sewer line at the center line of each manhole.
 No representative of the County Engineer will survey or layout any portion of the work.
 The owner or his authorized representative shall furnish the County Engineer with grade sheets and stations for all house laterals and Y branches and shall provide stakes for them at their proper locations with stationing plainly marked. Any change in location shall be requested in writing by the owner or his representative.
 No revisions shall be made in these plans without the approval of the County Engineer.

1. Use standard manhole frames and covers, S-a-117.
2. Use standard strength pipe except as noted.
3. Use cement mortar for all vitrified clay pipe joints.
4. Resurface all trench within paved area to meet L.A. County Road Dept. or California State Highway Dept. requirements in accordance with permit.
5. Encase four feet of sewer at points of interference with poles, S-a-119.
6. House laterals to be constructed with inverts at property line $\frac{6}{12}$ feet below curb grade except as noted.
7. All structures shall be brick sewer structures, S-a-104.
8. For allowable leakage test, use Formula No. 1, Spec's., Sec. 51.
9. Manhole tops in unimproved Rights-Of-Way to be 6" above finish grade.

SHEET NO.	PAGES
1	1-5
2	6-8

COLLECT CHARGES AS INDICATED
 S.K. Oude 11-17-54

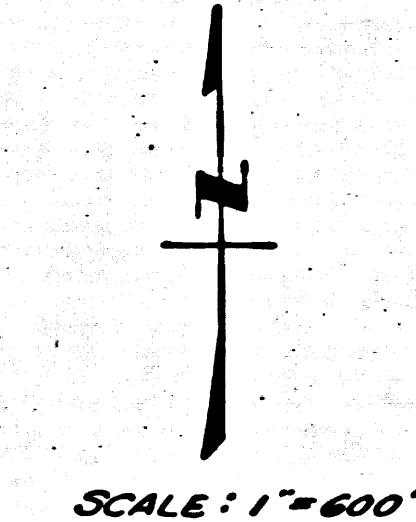
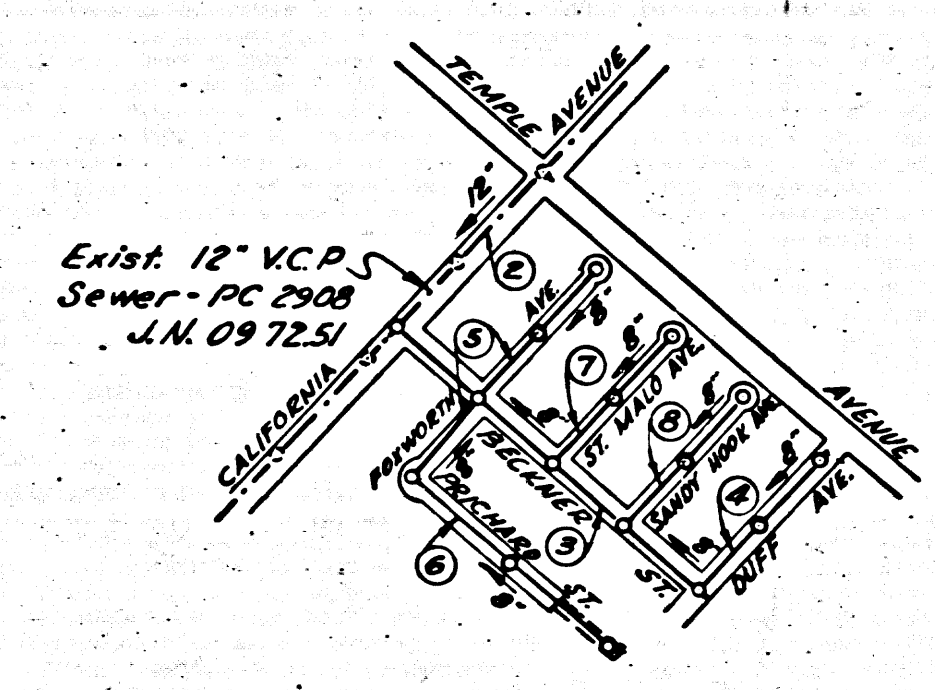
PROFILE, ALIGNMENT AND GRADE OF
SANITARY SEWERS
 TO BE CONSTRUCTED IN
TRACT NO 20629

PRIVATE CONTRACT NO. 3253
 W. S. 38
TWO SHEETS
 Scale: VERT. 1"=4'
 HORIZ. 1"=40'
 NOVEMBER, 1954
 PREPARED IN THE OFFICES OF
 PREPARED UNDER THE SUPERVISION OF
Henry Jones
 Reg. C. E. No. 4484
 FOR LEGEND SEE PLAN NO. S-a-64

NOTE:
 Grades to which this improvement is to be constructed are shown on plans and profiles. Grade points for top of curbs, center line of streets, or center line of alleys are shown by circles on profiles. At all points between designated points the grade shall be established so as to conform to a straight line drawn between said designated points.
 Elevations are in feet above U.S.G.S. datum or mean sea level.
 This drawing and the data hereon are hereby made a part of the specifications.
 Work shall be constructed according to specifications on file in the office of the County Engineer and shall be prosecuted only in the presence of the County Engineer.
 Before work can be started, the contractor must obtain a permit to excavate in County streets from the L.A. County Road Dept., 108 W. 2nd St. and make a deposit with the County Engineer, 733 L.A. County Engineering Building, sufficient to cover the cost of construction inspection and record plans.
 Approval of this plan by the County of Los Angeles does not constitute a representation as to the accuracy of the location of or the existence or non-existence of any underground utility, pipe, or structure within the limits of this project. This note applies to all sheets.
 If work is to be done in a State Highway, a permit must be obtained from the State of California, Division of Highways, 120 South Spring Street.

COUNTY OF LOS ANGELES, CALIFORNIA
 Approved, William J. Fox, County Engineer
 Approved, A. M. Rawm
 CHIEF ENGR. SAN. DIST. NO. 15
A.P. Collins
 Sanitation Engineer
 Checked by *R. P. ...* 11-18-54
 Office of County Engineer, Reg. C. E. No. 7860

A.M. S-G 1010, El. 938.038, Lead & Bench nail in N.E. corner of conc. 3x5 weir box @ SW corner of Fairgrove Ave. & Unruh Ave. 25' South of E. of Fairgrove Ave. & 35' West of E. Glendora Ave.



INDEX MAP
 TRACT NO 20629
 PC 3253

PC 3253
 PAGE 1

20478

TRACT NO 20629

PC 3253

checked 5-24-55 W. ...

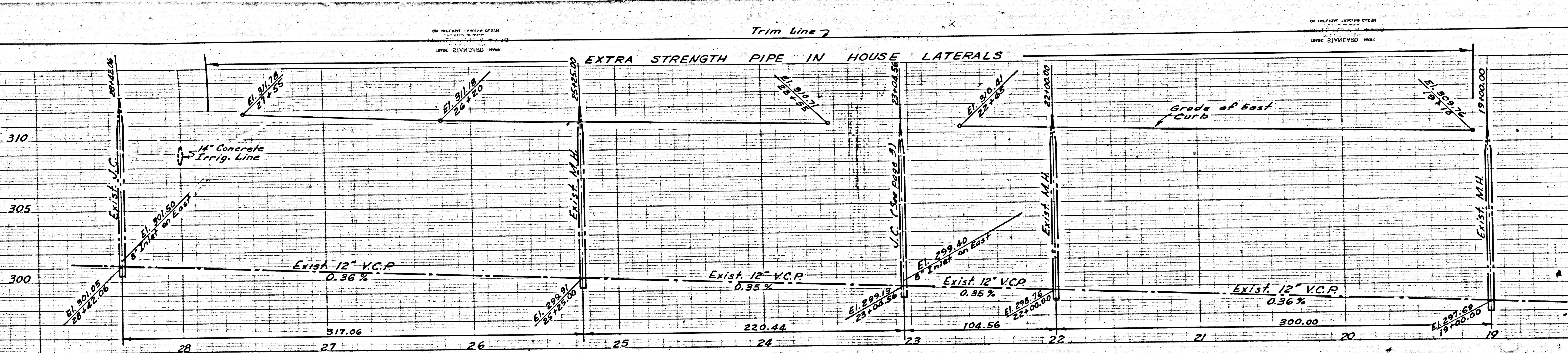
Henry Jones

PC 3253

PAGE 3

NO CHARGE FOR CONNECTIONS

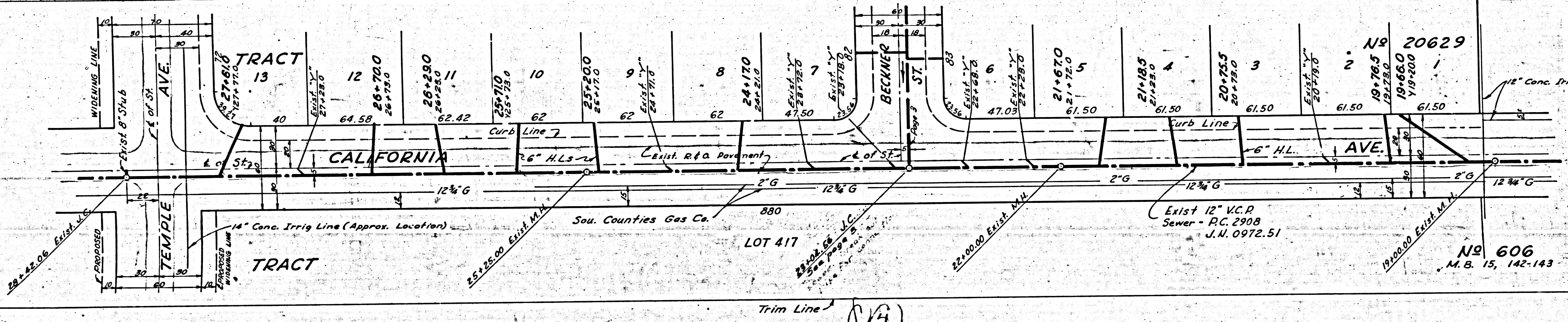
20489



PC 3253
PAGE 2

NO CHARGE FOR CONNECTIONS

20479



No. 606
M.B. 15, 142-143

Trim Line (4)

PC 3253

PAGE 4

COLLECT CHARGES AS INDICATED

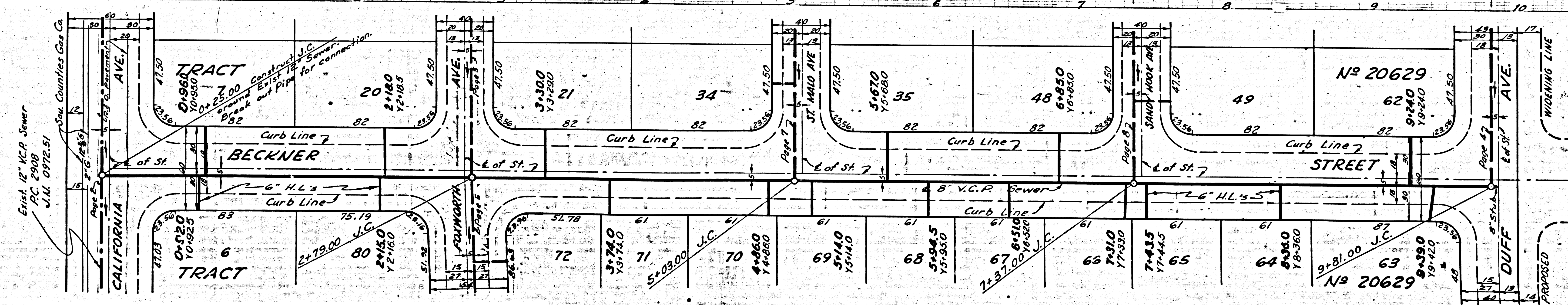
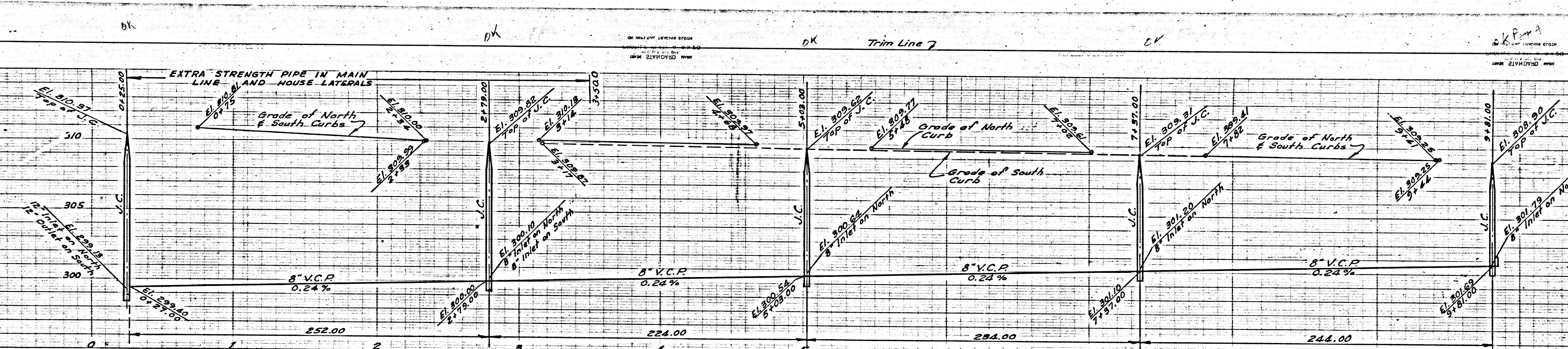
20,481

PC 3253

PAGE 3

NO CHARGE FOR CONNECTIONS

20,480



3

PC 3253

PAGE 5

NO CHARGE FOR CONNECTIONS

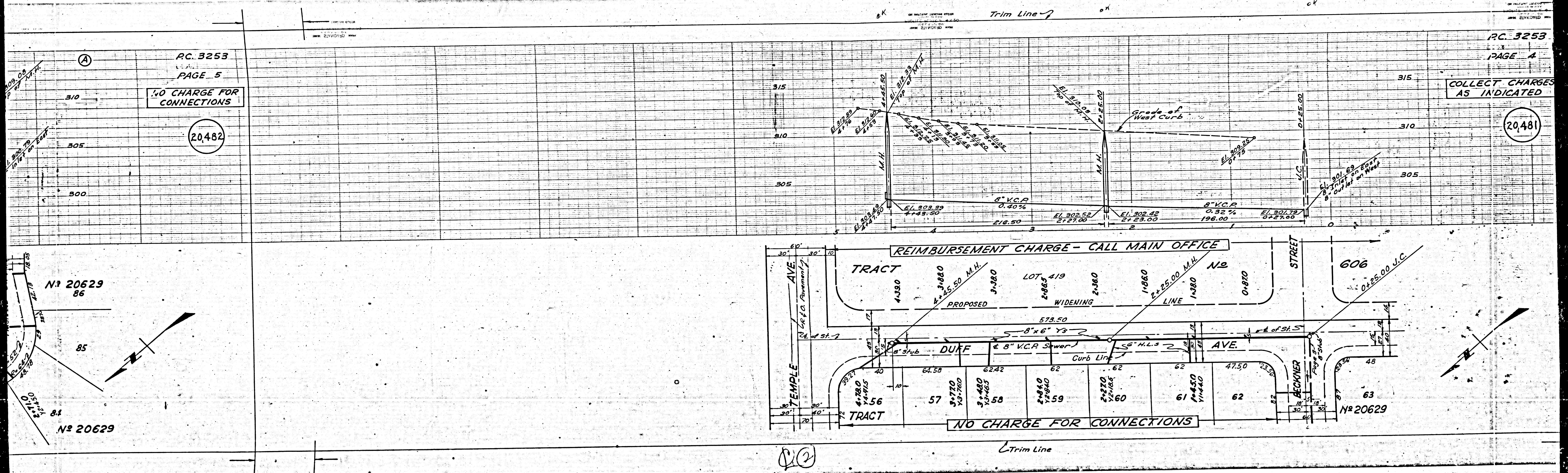
20482

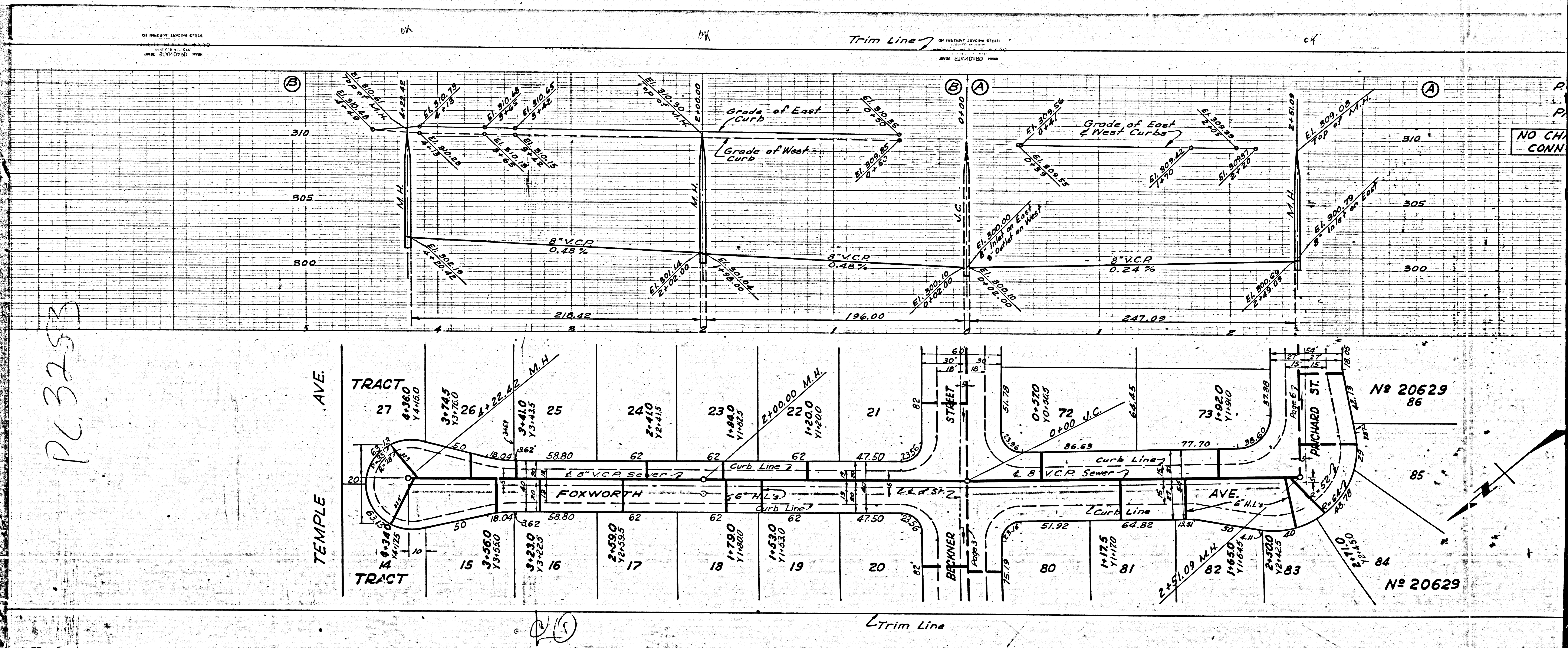
PC 3253

PAGE 4

COLLECT CHARGES AS INDICATED

20481





RC 3253

PAGE 7

NO CHARGE FOR CONNECTIONS

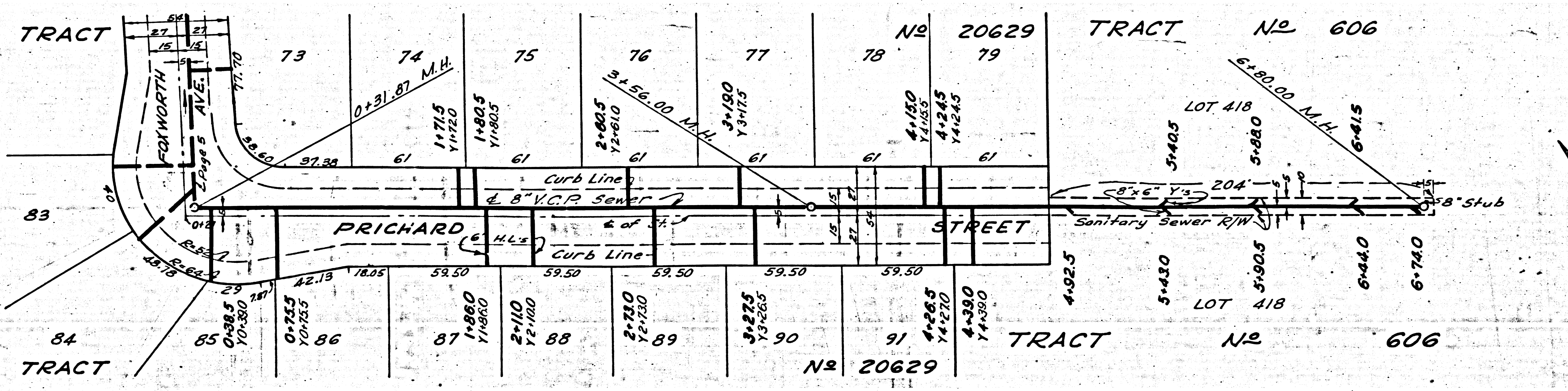
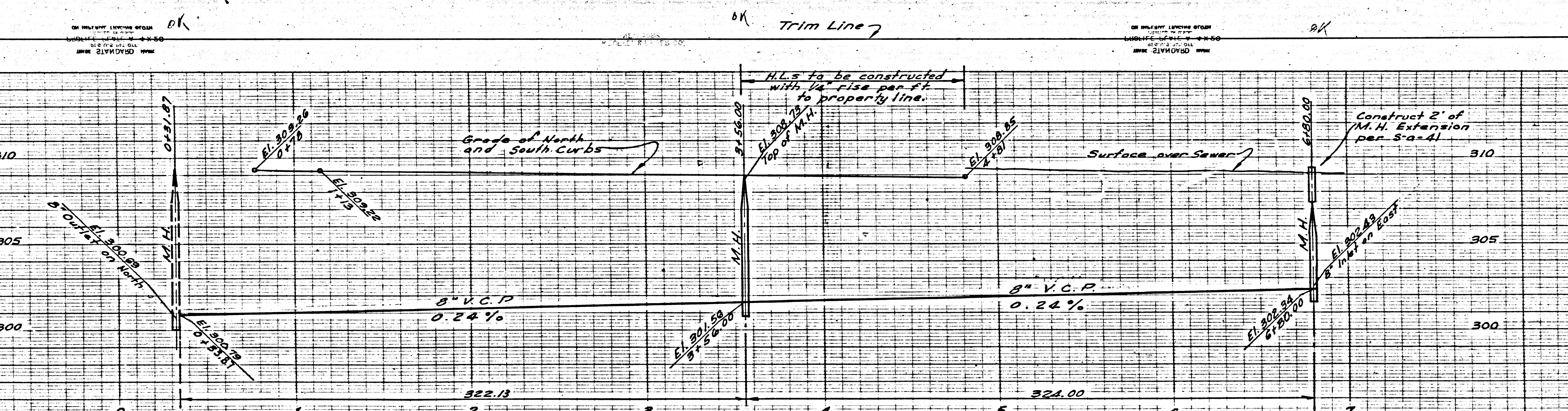
20484

RC 3253

PAGE 6

NO CHARGE FOR CONNECTIONS

20483



Trim Line

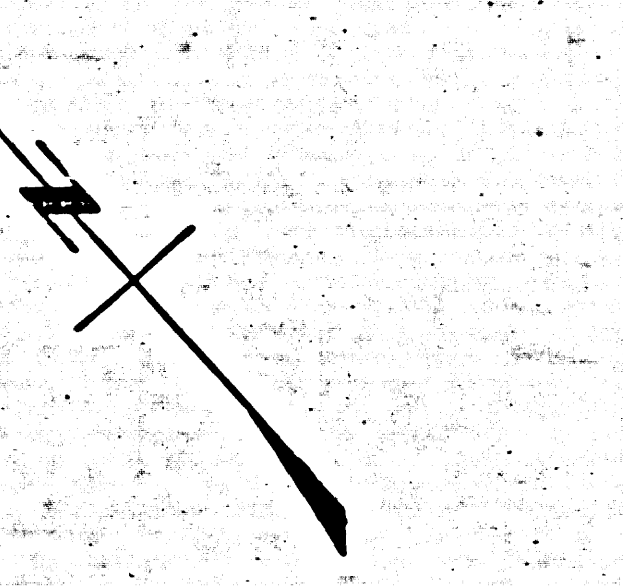
3

RC 3253

TRACT No 20629

TRACT No 606

TRACT No 606

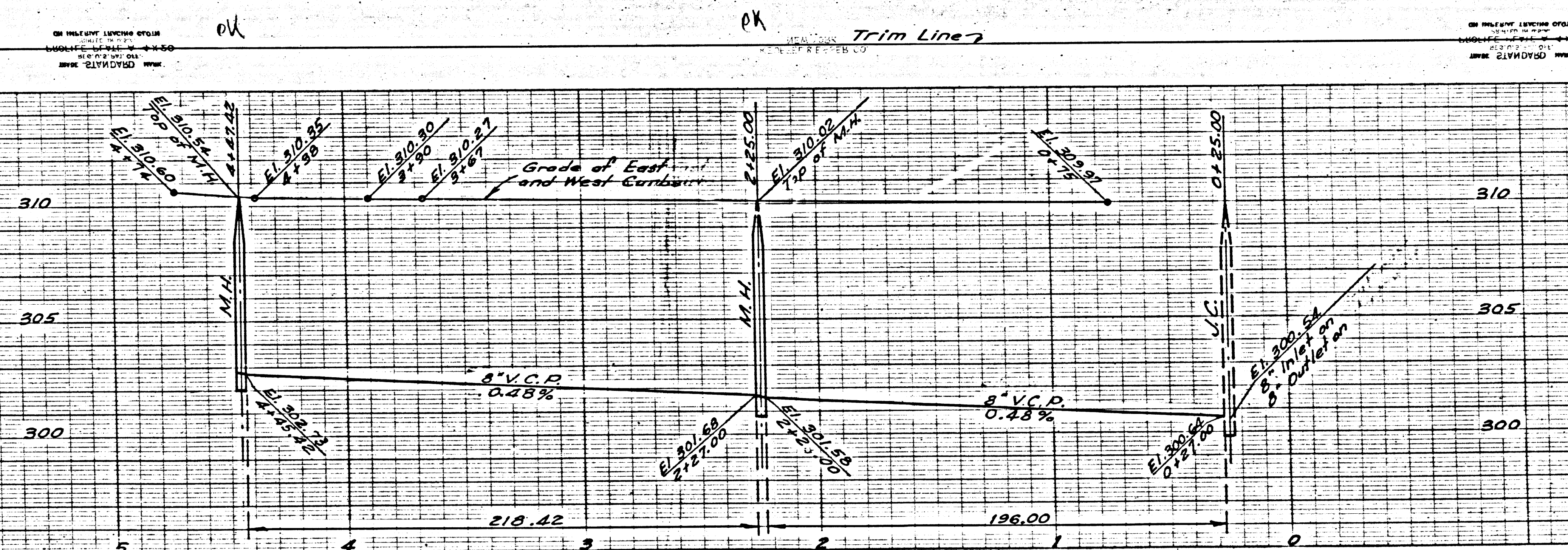


PC. 3253

PAGE 8

NO CHARGE FOR CONNECTIONS

20485

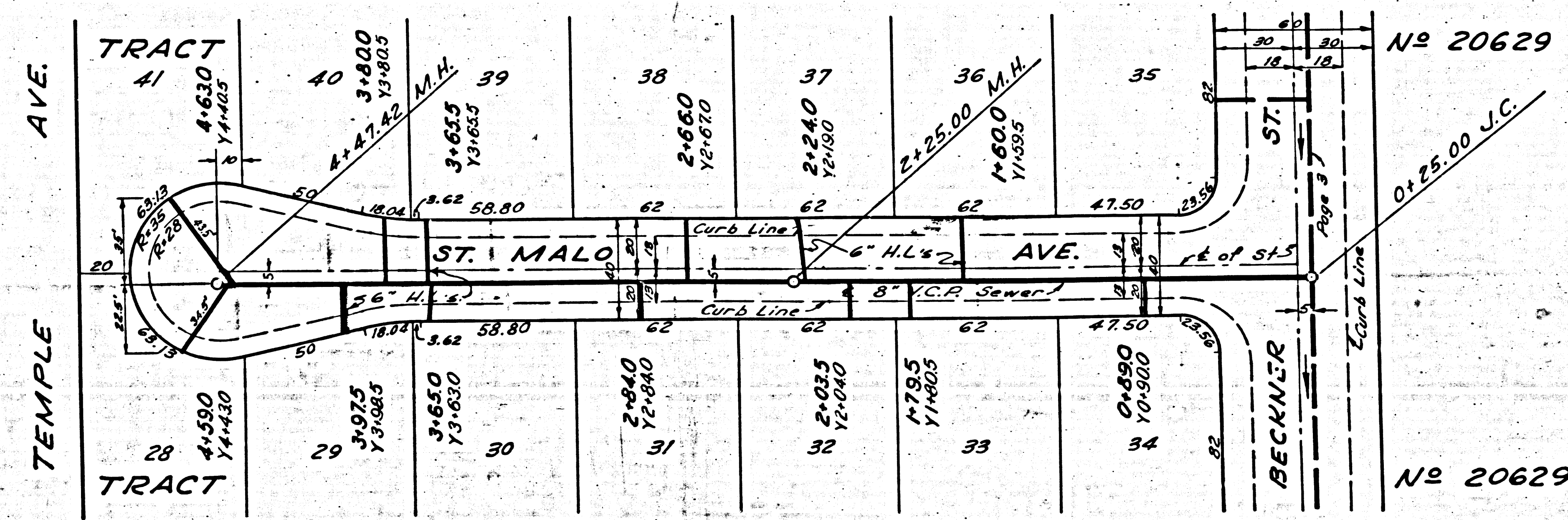


PC. 3253

PAGE 7

NO CHARGE FOR CONNECTIONS

20484

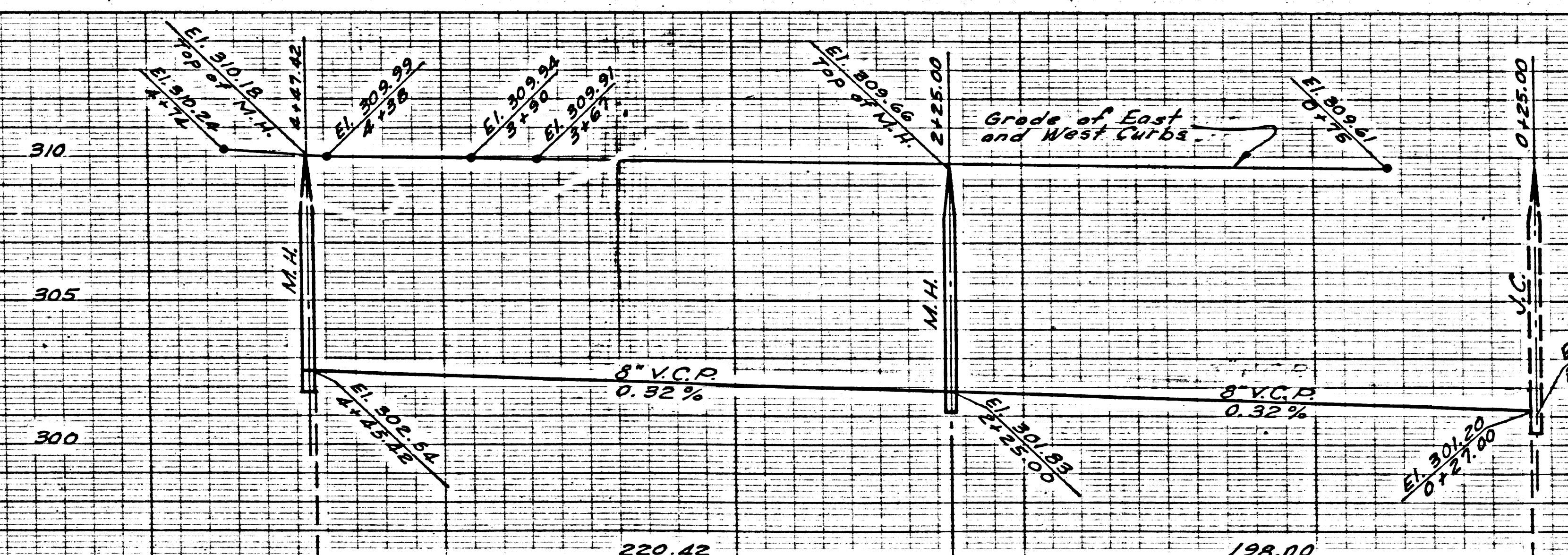


No 20629

No 20629

Trim Line

Trim Line

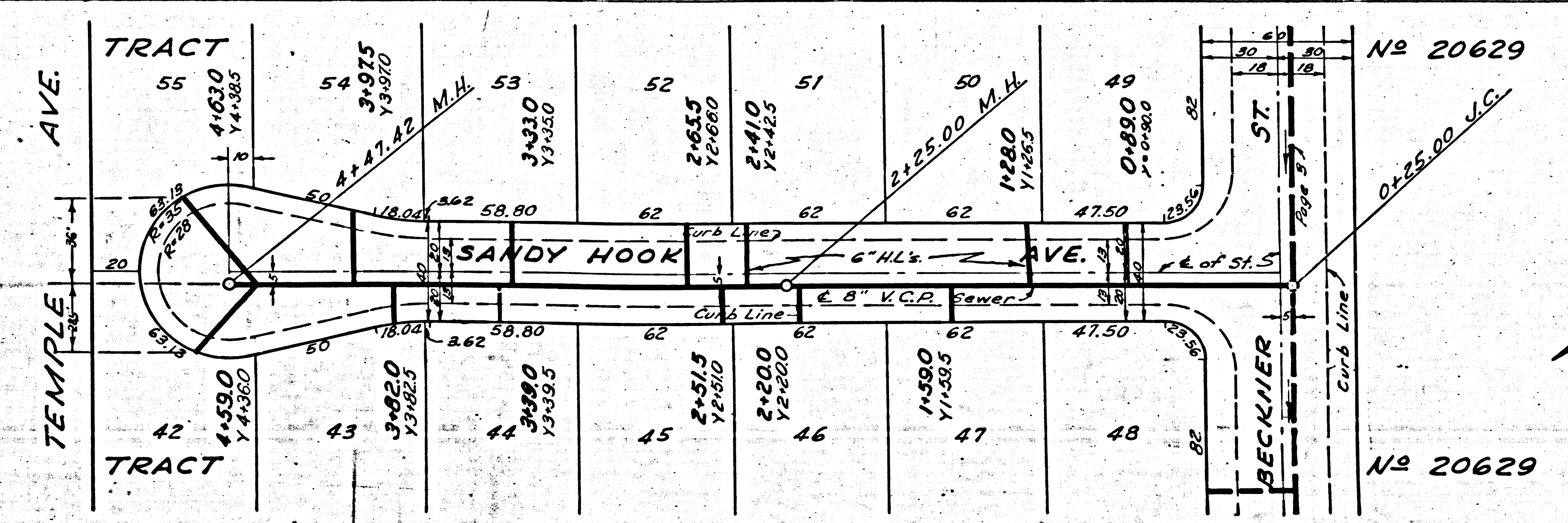


P.C. 3253
PAGE 8

NO CHARGE FOR CONNECTIONS

20,485

P.C. 3253



Trim Line

Nº 20629

Nº 20629