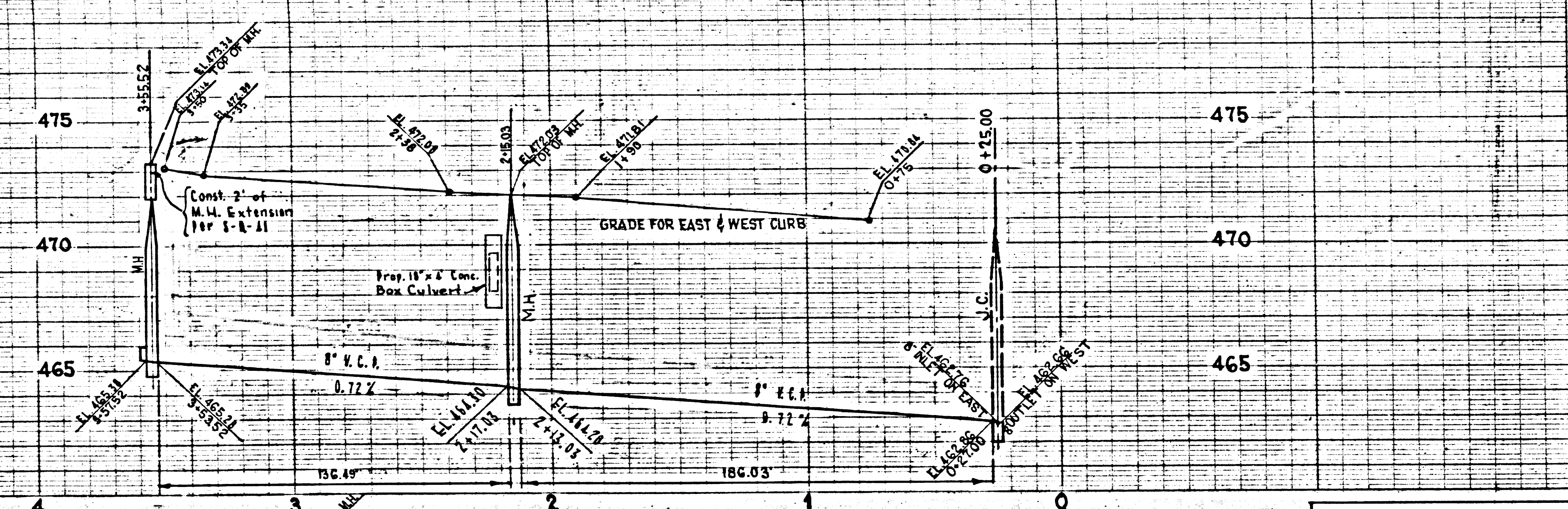


C. 3254  
PAGE 2  
NO CHARGE FOR CONNECTIONS  
21,497



SAN DIMAS BLDG. DIST. N<sup>o</sup> 10

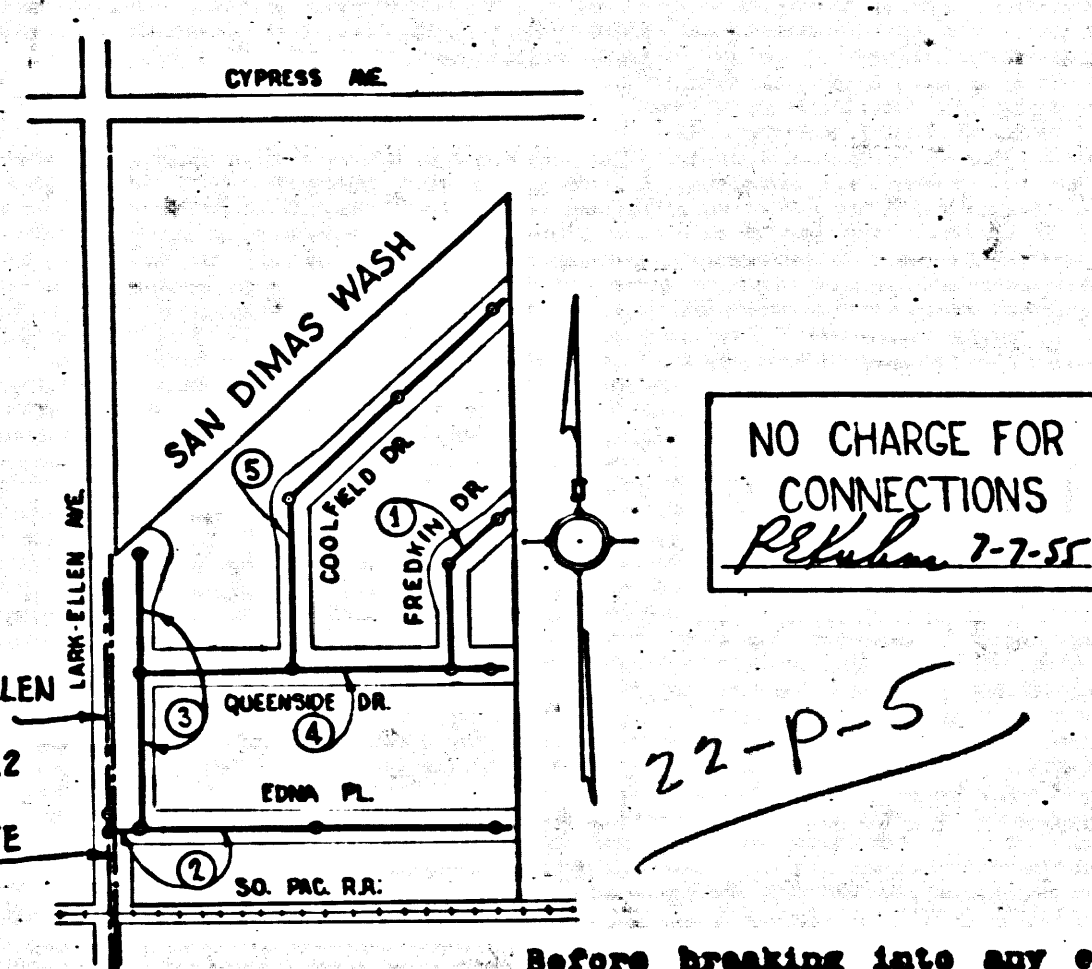
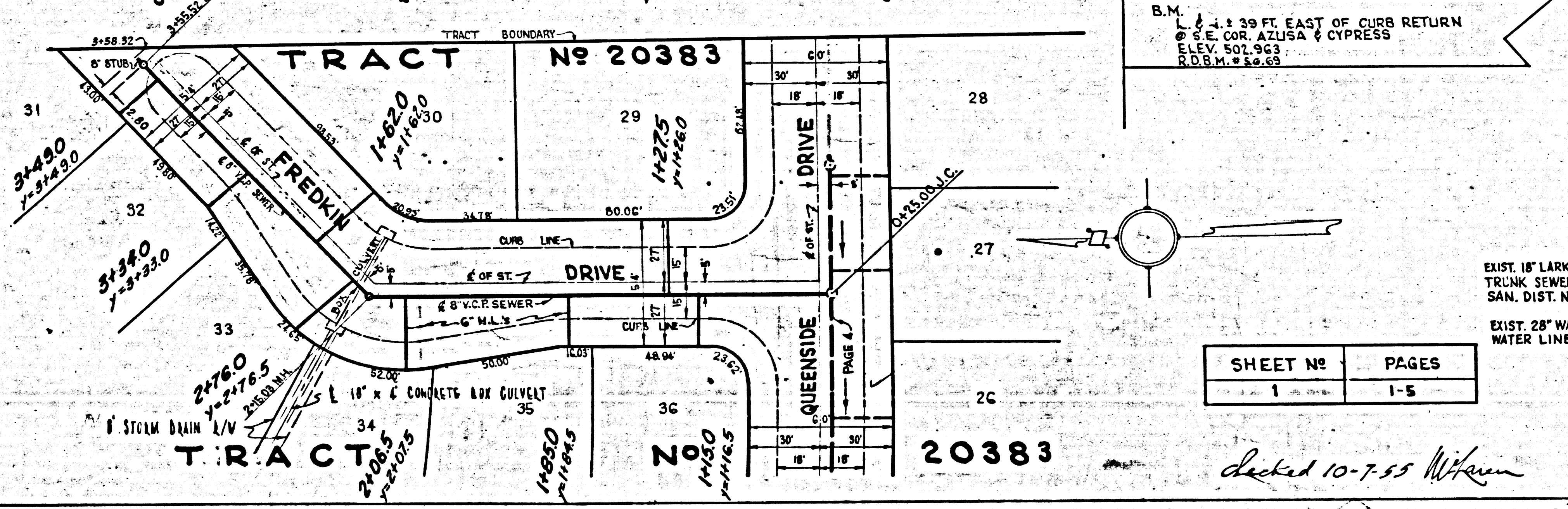
- NOTE: Provide stakes on the property lines or property lines produced at right angles to the sewer line at the center line of each manhole.
- No representative of the County Engineer will survey or lay out any portion of this work. The owner or his authorized representative shall furnish the County Engineer with grade sheets and stations for all house laterals and T branches and shall provide stakes for these at their proper locations with elevations plainly marked. Any change in location shall be requested in writing by the owner or his representative.
- No variations shall be made in these plans without the approval of the County Engineer.
1. Use standard manhole frames and covers, S-4-117, except as noted.
  2. Use standard strength pipe, except as noted.
  3. Use cement mortar for all vitrified clay pipe joints.
  4. Resurface all tracks within paved areas to meet L.A. County Road Dept or Calif. State Highway Dept. requirements in accordance with plans.
  5. Excavate four feet of sewer at points of interference with poles, S-4-119.
  6. House laterals to be constructed with inverts at property line 6 feet below curb grade.
  7. All structures shall be brick sewer structures, S-4-104, except as noted.
  8. Manhole tops to be unenclosed - height of top to be 6" above finished grade.
  9. For allowable leakage test see Formula No. 1, Sect. 56.

PROFILE, ALIGNMENT, AND GRADE OF  
SANITARY SEWERS  
TO BE CONSTRUCTED IN  
TRACT N<sup>o</sup> 20383  
PRIVATE CONTRACT N<sup>o</sup> 3254  
WS. 47  
1 SHEET  
Scale: VERT. 1" = 4'  
HORIZ. 1" = 40'  
DATE: OCT. 1954  
PREPARED IN THE OFFICE OF  
LEONARD H. GOWDY  
By Leonard H. Gowdy  
Reg. C.E. No. 4823  
FOR LEGEND SEE PLAN N<sup>o</sup> S-4-64

P.C. 3254  
PAGE 1

21,496

TRACT N<sup>o</sup> 20383



NO CHARGE FOR CONNECTIONS  
Plan No. 2-7-55

SHEET N <sup>o</sup>	PAGES
1	1-5

checked 10-7-55 Wilson

TRIM LINE

NOTE: Grades in which this improvement is to be constructed are shown on plans and profiles. Grade points for top of curbs, center line of streets, or center line of alleys are shown by circles as profiles. All points between designated points the grade shall be established so as to conform to a straight line drawn between said designated points.

Elevations are in feet above U.S.G.S. datum or mean sea level.

This drawing and the data hereon are hereby made a part of the specifications.

Work shall be constructed according to specifications on file in the office of the County Engineer and shall be prosecuted only in the presence of the County Engineer.

Before work can be started, the contractor must obtain a permit to excavate in County streets from the L.A. County Road Dept. 100 W. 2nd St. and make a deposit with the County Engineer, 1000 214 S. Broadway, sufficient to cover the cost of construction inspection and record plans.

Approval of this plan by the County of Los Angeles does not constitute a representation as to the accuracy of the location of or the existence or non-existence of any underground utility pipe or structure within the limits of this project. This note applies to all sheets.

If work is to be done in a State Highway, a permit must be obtained from the State of California, Division of Highways, 120 S. Spring St.

COUNTY OF LOS ANGELES, CALIF.  
Approved, William J. Fox, County Engineer  
Approved, A. M. Rows  
Sanitation Engineer  
Office Engineer  
Checked by: R. K. Johnson 7-7-55  
Office of County Engineer, Reg. C.E. No. 7562

Before breaking into any existing structure and before final acceptance of this work, County Sanitation District should be notified. In order that required inspection may be made.

P.C. 3254  
ARSEN

PC 3254

PAGE 3

NO CHARGE FOR CONNECTIONS

21,498

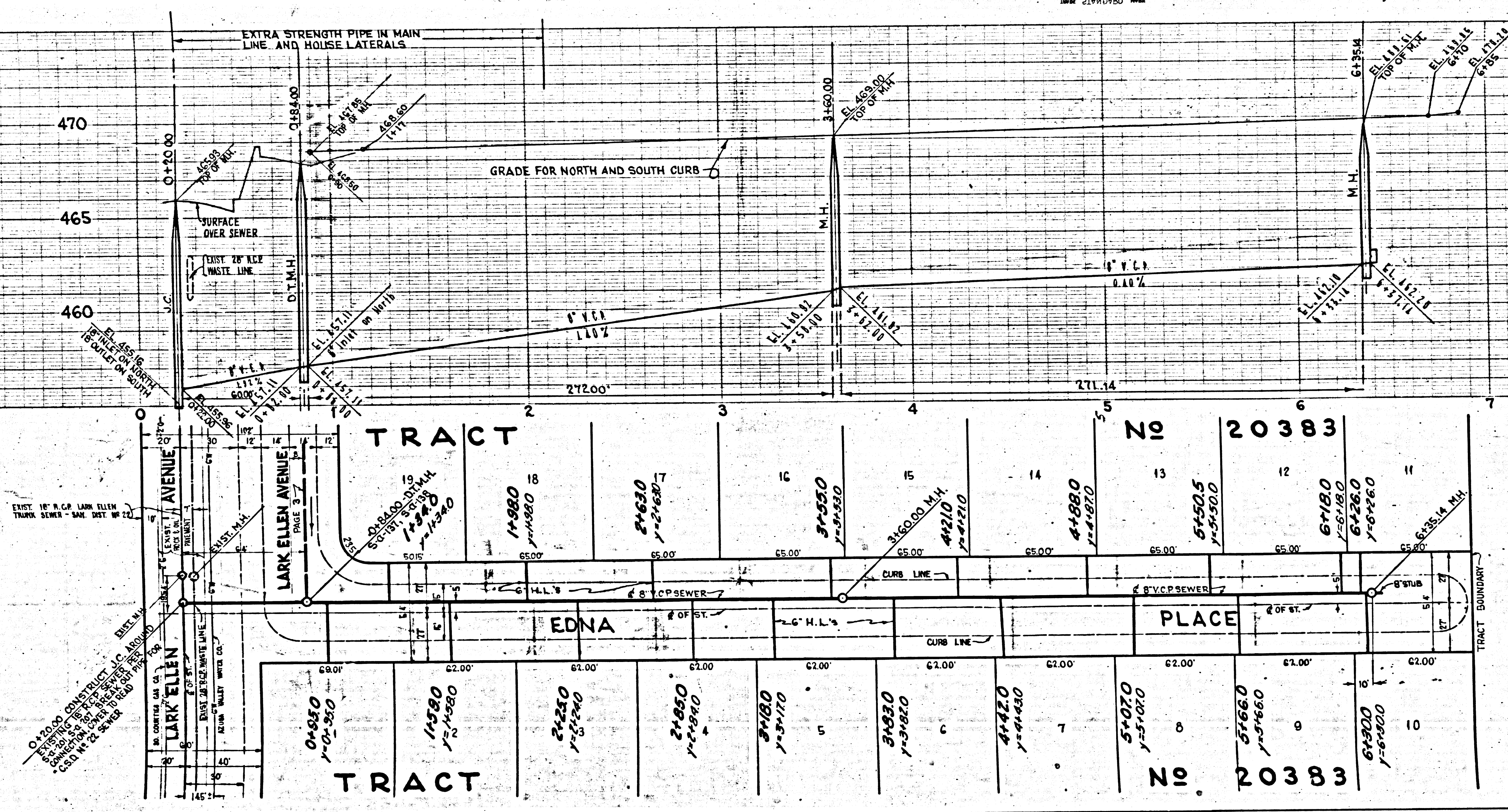
TRIM LINE

PC 3254

PAGE 2

NO CHARGE FOR CONNECTIONS

21,497



TRACT

No 20383

TRACT

No 20383

P.C. 3254  
PAGE 4

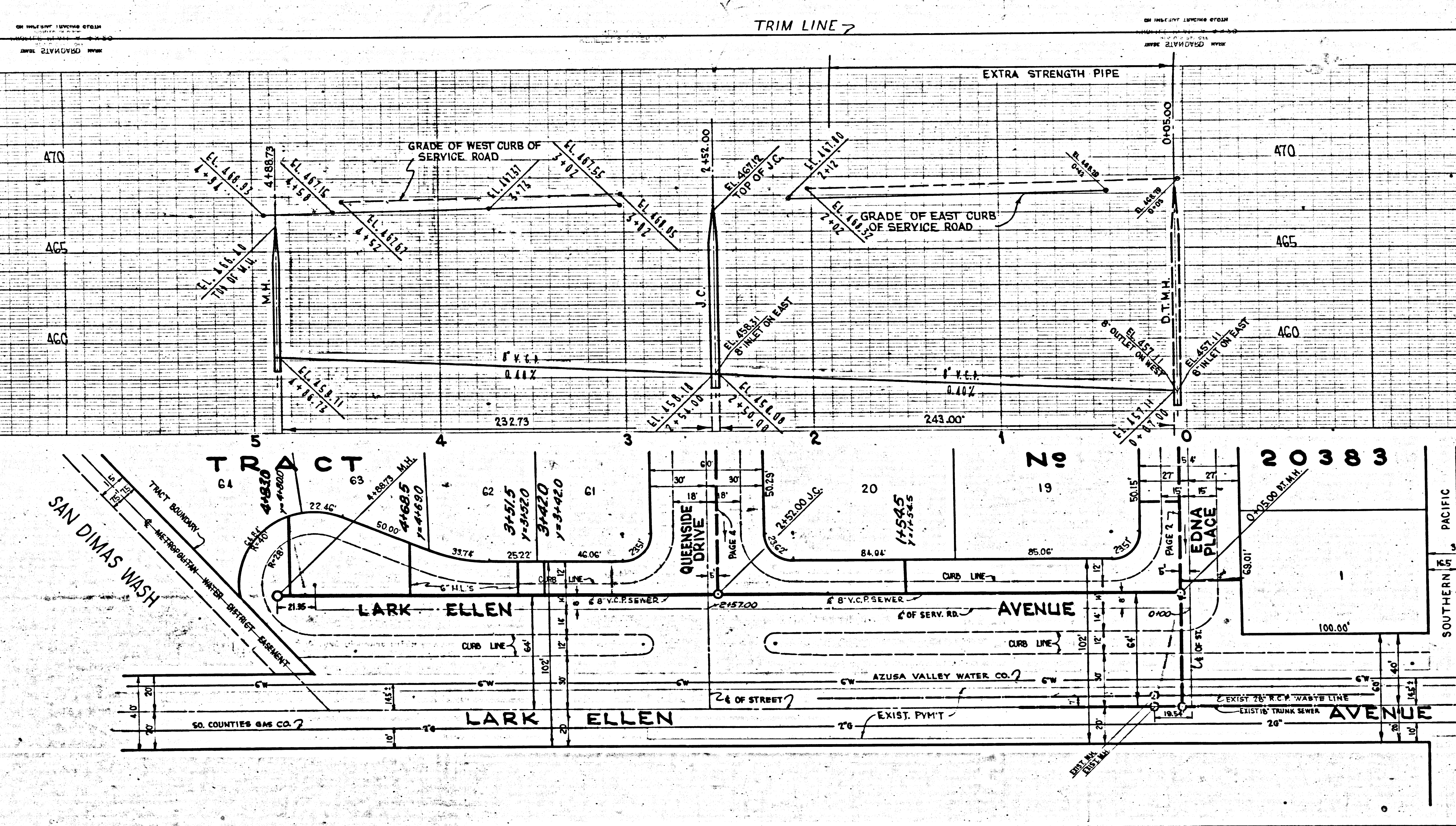
NO CHARGE FOR CONNECTIONS

21,499

P.C. 3254  
PAGE 3

NO CHARGE FOR CONNECTIONS

21,498



213

TRIM LINE

P.C. 3254  
PAGE 5

NO CHARGE FOR  
CONNECTIONS

21,500

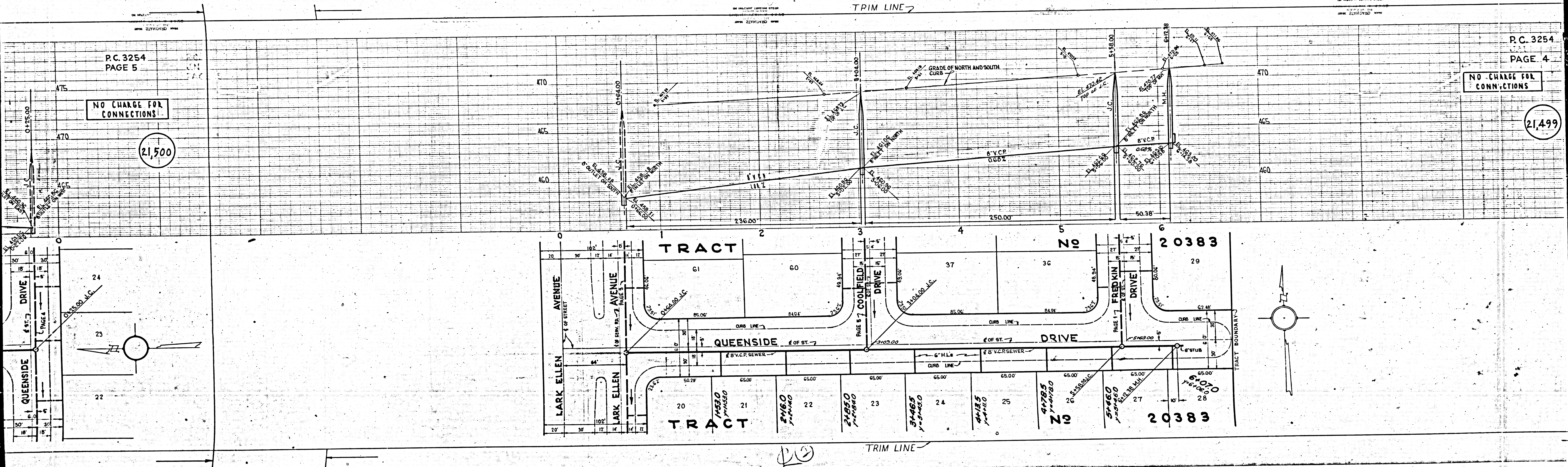
TRIM LINE

P.C. 3254

PAGE 4

NO CHARGE FOR  
CONNECTIONS

21,499

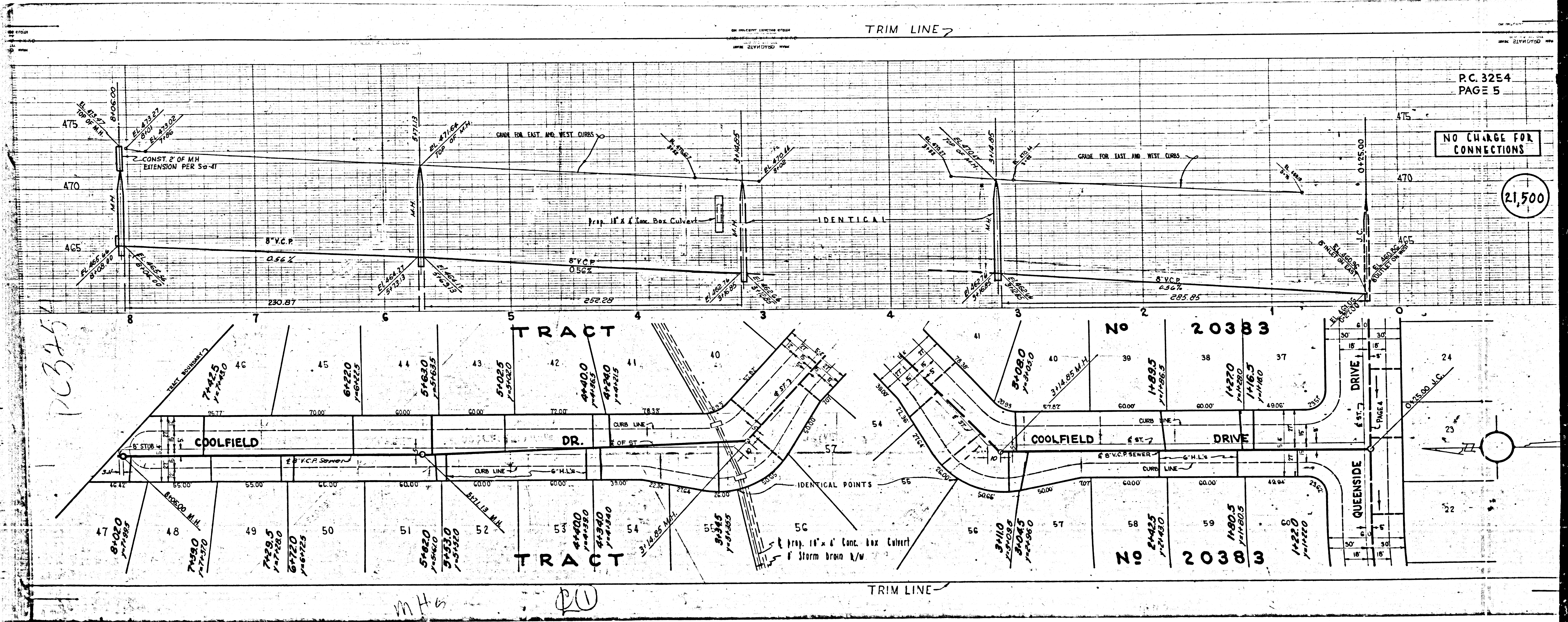


TRIM LINE

P.C. 3254  
PAGE 5

NO CHARGE FOR CONNECTIONS

21,500



PC 3254

M.H.s

20

TRIM LINE

TRACT

TRACT

No 20383

No 20383

COOLFIELD DR.

COOLFIELD DRIVE

QUEENSIDE DRIVE

ST. 7

ST. 7

ST. 7

ST. 7

ST. 7

ST. 7

ST. 7

ST. 7

ST. 7

ST. 7

ST. 7

ST. 7

ST. 7

ST. 7

ST. 7

ST. 7

ST. 7

ST. 7

ST. 7

ST. 7

ST. 7

ST. 7

ST. 7

ST. 7

ST. 7

ST. 7

ST. 7

ST. 7

ST. 7