

PAGE FOR ACTIONS PAGE 2 P.C. 3255

Part of Page 1 - P.C. 3255

### BELLFLOWER BLDG. DIST. NO. 4

APPROVAL OF THIS PLAN BY THE COUNTY OF LOS ANGELES DOES NOT CONSTITUTE A REPRESENTATION AS TO THE ACCURACY OF THE LOCATION OF OR THE EXISTENCE OR NON-EXISTENCE OF ANY UNDERGROUND UTILITY PIPE OR STRUCTURE WITHIN THE LIMITS OF THIS PROJECT.

PROFILE ALIGNMENT AND GRADE OF SANITARY SEWER TO BE CONSTRUCTED IN P.C. 3255 P.M. PAGE 1

#### BENCH MARK

T.B. MARK-A ELEV. 45.34  
1.5' IN CURB 12 S. OF E.C.R. SW. COR. CARSON ST. & WOODRUFF AVE.  
B.M. 57 1/2 IN. NO. LOWER IN PLACE. L.E.T. AS NOTED ABOVE WITH INFORMATION SHOWN FOUND PRINTED ON CURB TOP. (CY 138, E.L. 45.555)

SANITARY SEWER R/W IN LOT 16 TRACT NO. 9265

PRIVATE CONTRACT NO. 3255 W.S. 31 SHEET 1 OF 1 SHEET SEPTEMBER 1954

PREPARED BY R.V. PEARSALL

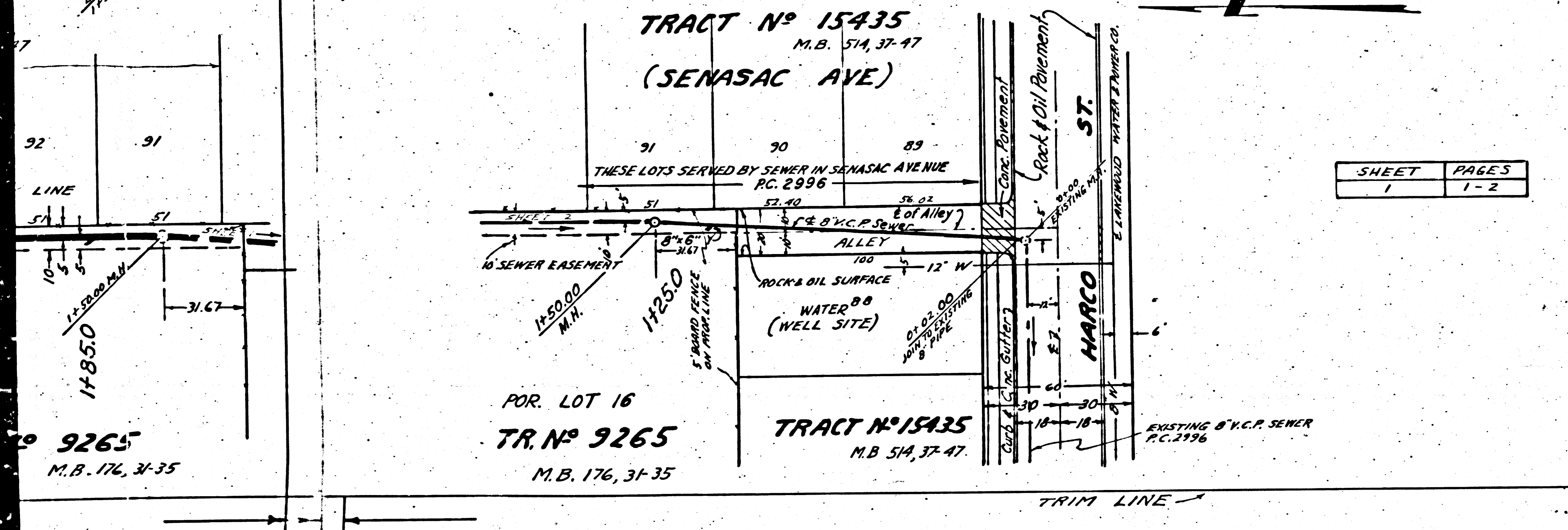
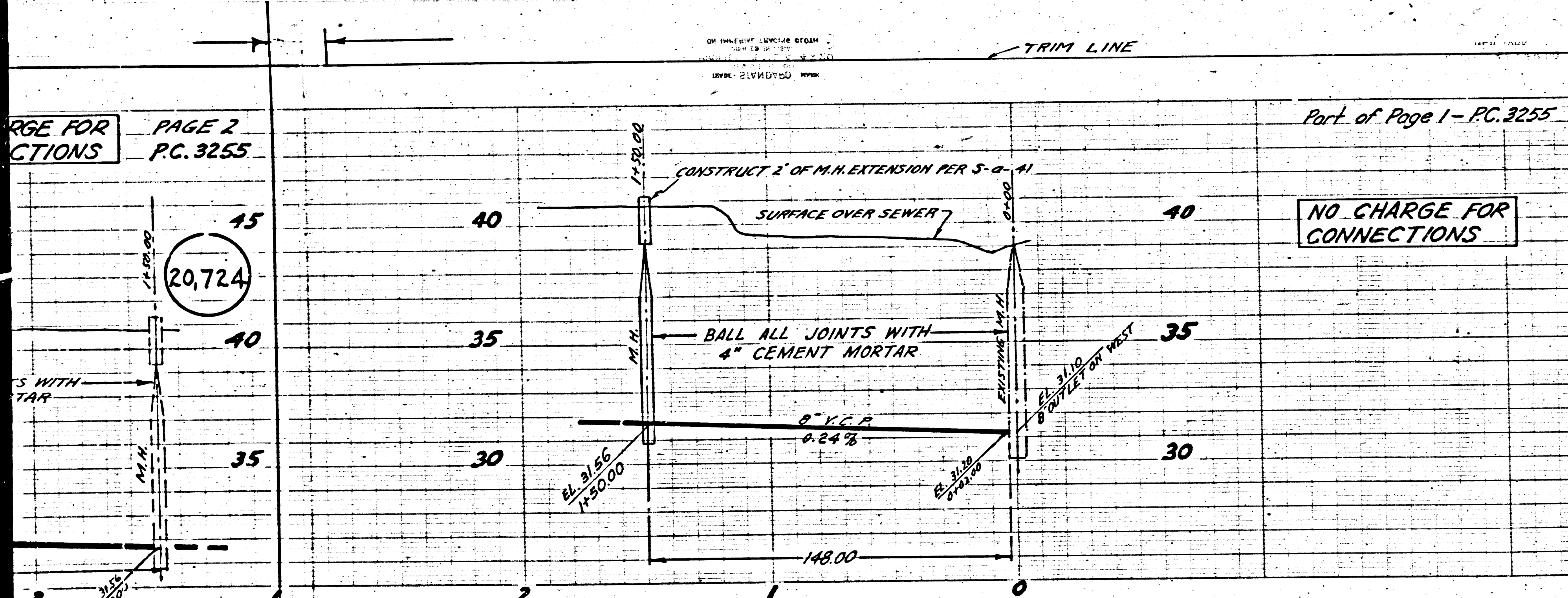
- (1) USE STANDARD MANHOLE FRAME AND COVER, S-9-117.
- (2) USE STANDARD STRENGTH PIPE.
- (3) USE CEMENT MORTAR FOR ALL VITRIFIED CLAY PIPE JOINTS.
- (4) ALL STRUCTURES SHALL BE BRICK SEWER STRUCTURES, S-9-104.
- (5) RESURFACE ALL TRENCH WITHIN PAVED AREA TO MEET LOS ANGELES COUNTY ROAD DEPARTMENT OR CALIFORNIA HIGHWAY DEPARTMENT REQUIREMENTS IN ACCORDANCE WITH PERMIT.
- (6) FOR ALLOWABLE LEAKAGE TEST USE FORMULA #1, SPECIFICATIONS SECTION 51.

NOTE: NO REPRESENTATIVE OF THE COUNTY ENGINEER WILL SURVEY OR LAY OUT ANY PORTION OF THE WORK. THE OWNER OR HIS AUTHORIZED REPRESENTATIVE SHALL FURNISH THE COUNTY ENGINEER WITH GRADE SHEETS AND STATIONS OF ALL HOUSE CATERDALS, L AND Y BRANCHES AND SHALL PROVIDE STAKES FOR THEM AT THEIR PROPER LOCATIONS WITH STATIONING PLAINLY MARKED. ANY CHANGE OF LOCATION SHALL BE REQUESTED IN WRITING BY OWNER OR HIS REPRESENTATIVE. NO REVISIONS SHALL BE MADE IN THESE PLANS WITHOUT APPROVAL OF THE COUNTY ENGINEER.

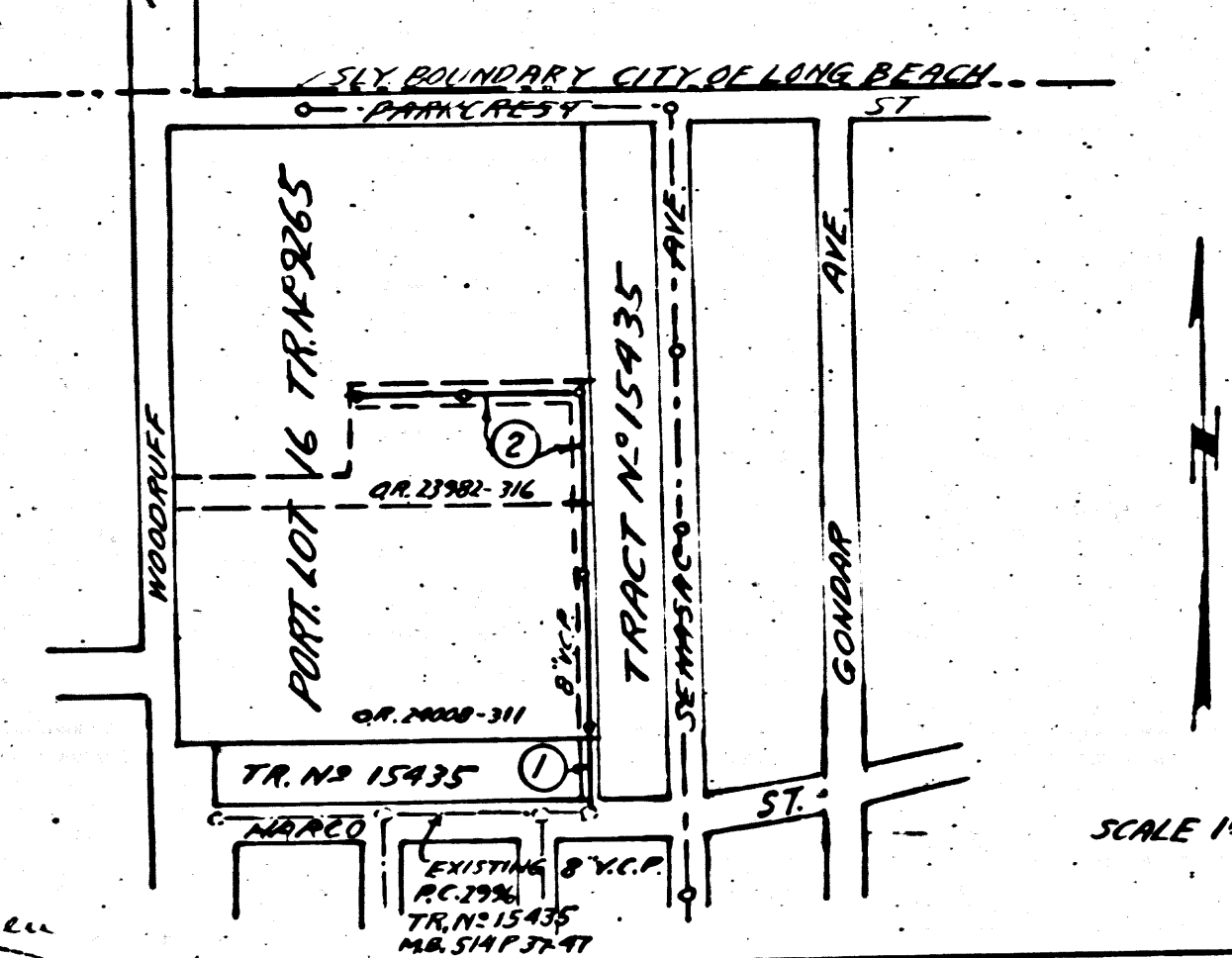
- (7) PROVIDE STAKES ON PROPERTY LINES OR PROPERTY LINES PRODUCED BY RIGHT ANGLES TO THE SEWER LINE AT THE CENTER LINE OF EACH MANHOLE.
- (8) ENCASE FOUR FEET OF SEWER AT POINTS OF INTERFERENCE WITH POLES, S-9-113.
- (9) MANHOLE TOPS IN UNIMPROVED RIGHT-OF-WAY TO BE 6" ABOVE FINISH GRADE.

NO CHARGE FOR CONNECTIONS

NO CHARGE FOR CONNECTIONS



#### INDEX MAP P.C. 3255



NOTE: GRADES TO WHICH THIS IMPROVEMENT IS TO BE CONSTRUCTED ARE SHOWN ON PLANS AND PROFILE. GRADE POINTS FOR TOP OF CURB, CENTER LINE OF STREET OR CENTER LINE OF ALLEY ARE SHOWN BY CIRCLES ON PROFILES. AT ALL POINTS BETWEEN DESIGNATED POINTS THE GRADE SHALL BE ESTABLISHED SO AS TO CONFORM TO A STRAIGHT LINE DRAWN BETWEEN SAID DESIGNATED POINTS. ELEVATIONS ARE IN FEET ABOVE U.S.C.S. DATUM OR MEAN SEA LEVEL. THIS DRAWING AND THE DATA HEREON ARE HEREBY MADE A PART OF THE SPECIFICATIONS. WORK SHALL BE CONSTRUCTED ACCORDING TO SPECIFICATIONS ON FILE IN THE OFFICE OF THE COUNTY ENGINEER AND SHALL BE PROSECUTED ONLY IN THE PRESENCE OF THE COUNTY ENGINEER. BEFORE WORK CAN BE STARTED, THE CONTRACTOR MUST OBTAIN A PERMIT TO ENCASE IN COUNTY STREETS FROM THE L.A. COUNTY ROAD DEPT., FROM SECOND STREET, AND MAKE A DEPOSIT WITH THE COUNTY ENGINEER, 231 L. A. COUNTY ENGINEERING BLDG., SUFFICIENT TO COVER THE COST OF CONSTRUCTION INSPECTION AND RECORD PLANS.

COUNTY OF LOS ANGELES, CALIFORNIA.

APPROVED, A.M. RAWIN  
COUNTY ENGINEER

APPROVED BY R.V. PEARSALL  
SANITATION ENGINEER

CHECKED BY [Signature] 5-6-55  
CLERK OF COUNTY ENGINEER

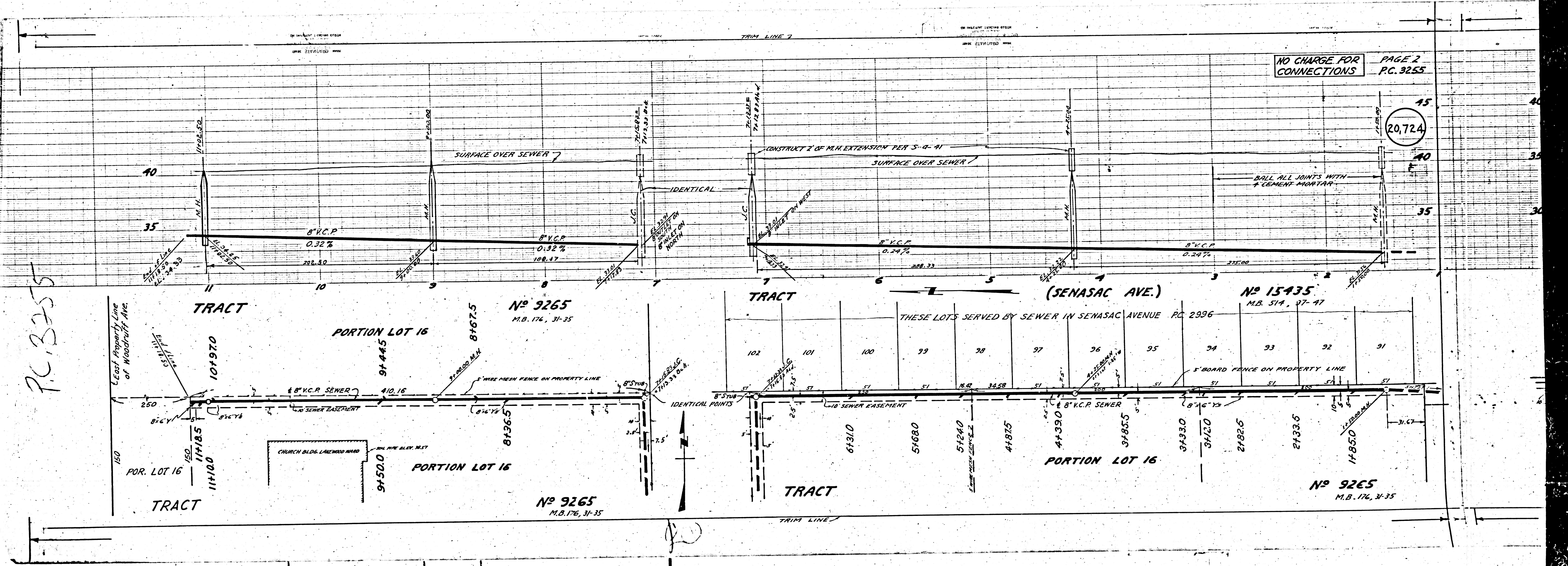
P.C. 3255

(20,723)

SEPTEMBER 1954

P.C. 3255

checked 6-23-55



NO CHARGE FOR CONNECTIONS PAGE 2 P.C. 3255

20,724

P.C. 3255

TRACT

PORTION LOT 16

No 9265  
M.B. 176, 31-35

TRACT

(SENASAC AVE.)

No 15435  
M.B. 514, 97-47

THESE LOTS SERVED BY SEWER IN SENASAC AVENUE P.C. 2996

PORTION LOT 16

No 9265  
M.B. 176, 31-35

No 9265  
M.B. 176, 31-35

Least Property Line of Woodcraft Ave.

150

150

150

150

150

150

150

150

150

150

150

150

150

150

150

150

150

150

150

150

150

150

150

150

150

150

150

150

150

150

150

150

150

150

150

150

150

150

150

150

150

150

150

150

150

150

150

150

150

150

150

150

150

150

150

150

150

150

150

150

150

150

150

150

150

150

150

150

150

150

150

150

150

150

150

150

150

CHURCH BLDG. LATERAL WARD

9450.0

9450.0

9450.0

9450.0

9450.0

9450.0

9450.0

9450.0

9450.0

9450.0

9450.0

9450.0

9450.0

9450.0

9450.0

9450.0

9450.0

9450.0

9450.0

9450.0

9450.0

9450.0

9450.0

9450.0

9450.0

9450.0

9450.0

9450.0

9450.0

9450.0

9450.0

9450.0

TRACT

TRACT

TRACT

TRACT

TRACT

TRACT

TRACT

TRACT