

BELLFLOWER BLDG. DIST. NO. 4

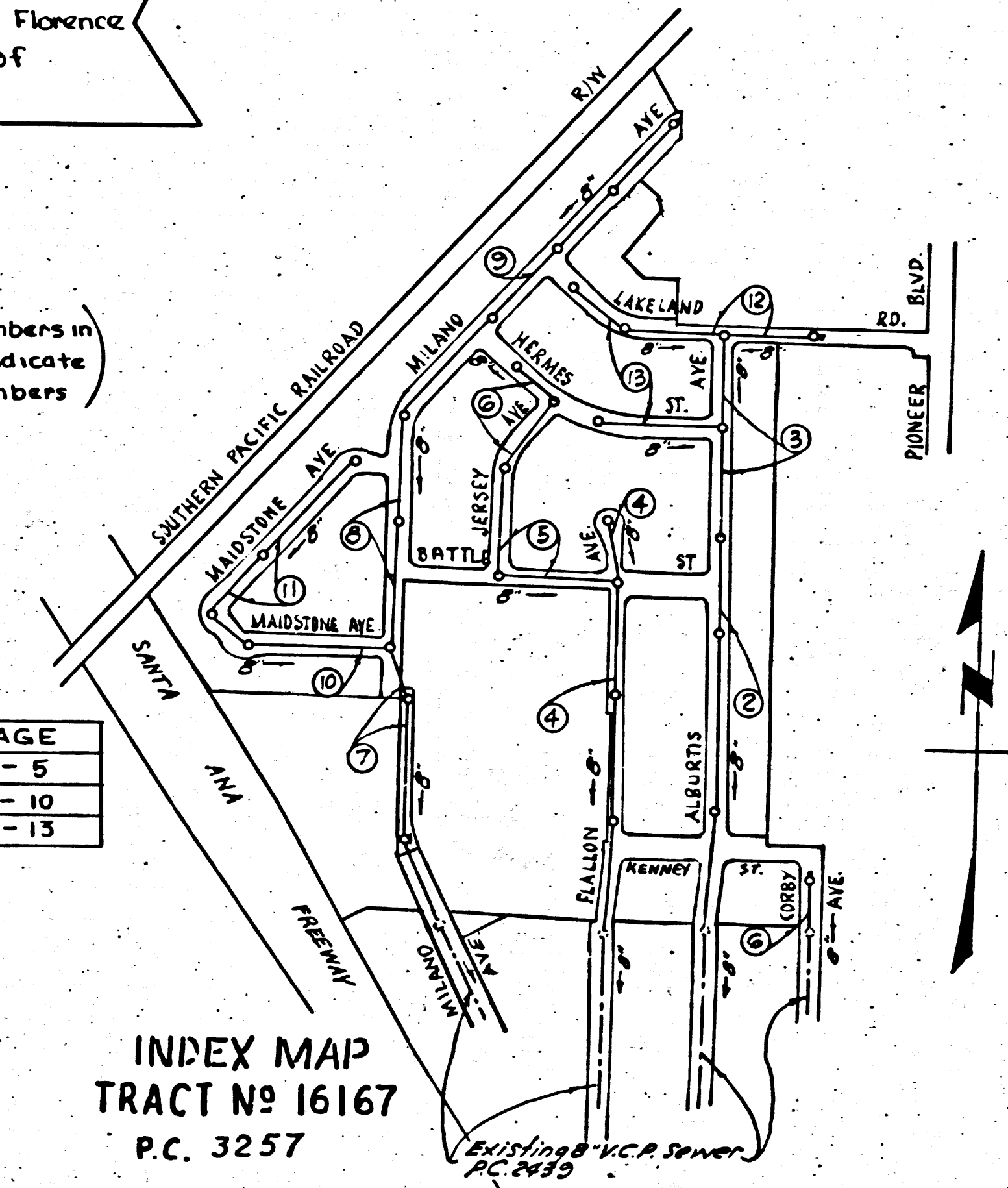
B.M. 51-1329 EL 119.402  
L&N In Concrete Base  
of Fence 55' S of Florence  
Ave 35' E of C.L. of  
Pioneer Blvd.

(NOTE: Numbers in  
Circles Indicate  
Page Numbers)

SHEET	PAGE
1	1 - 5
2	6 - 10
3	11 - 13

INDEX MAP  
TRACT NO 16167  
P.C. 3257

SCALE: 1" = 400'



COLLECT CHARGES  
AS INDICATED  
*J. Carter 11-19-54*

*checked 3-18-55 M. Warren*

- NOTE:**
- Provide stakes on the property lines or property lines produced at right angles to the sewer line at the center line of each manhole.
- No representative of the County Engineer will survey or layout any portion of the work.
- The owner or his authorized representative shall furnish the County Engineer with grade sheets and stations for all house laterals and Y branches and shall provide stakes for them at their proper locations with stationing plainly marked. Any change in location shall be requested in writing by the owner or his representative.
- No revisions shall be made in these plans without the approval of the County Engineer.
1. Use standard manhole frames and covers, S-a-117, except as noted.
  2. Use standard strength pipe except as noted.
  3. Use cement mortar for all vitrified clay pipe joints.
  4. Resurface all trench within paved area to meet L.A. County Road Dept. or California State Highway Dept. requirements in accordance with permit.
  5. Encase four feet of sewer at points of interference with poles, S-a-119.
  6. House laterals to be constructed with inverts at property line \_\_\_\_\_ feet below curb grade except as noted.
  7. All structures shall be brick sewer structures, S-a-104.
  8. For allowable leakage test, use Formula No. \_\_\_\_\_ Spec's., Sec. 51.
  9. Manhole tops in unimproved Rights-Of-Way to be 6" above finish grade.

PROFILE, ALIGNMENT AND GRADE OF  
SANITARY SEWERS  
TO BE CONSTRUCTED IN

TRACT NO 16167

PRIVATE CONTRACT NO. 3257  
W. S. 33  
3 SHEETS

Scale: VERT. 1" = 4'  
HORIZ. 1" = 40'

NOV. 1954  
PREPARED IN THE OFFICES OF  
JENNINGS ENGINEERING CO.

*J. J. Jennings*  
Reg. C. E. No. 7858  
FOR LEGEND SEE PLAN NO. S-a-64

**NOTE:**

Grades to which this improvement is to be constructed are shown on plans and profiles. Grade points for top of curbs, center line of streets, or center line of alleys are shown by circles on profiles. At all points between designated points the grade shall be established so as to conform to a straight line drawn between said designated points.

Elevations are in feet above U.S.G.S. datum or mean sea level.

This drawing and the data hereon are hereby made a part of the specifications.

Work shall be prosecuted only in the presence of the County Engineer.

Before work can be started, the contractor must obtain a permit to excavate in County streets from the L.A. County Road Dept., 108 W. 2nd St. and make a deposit with the County Engineer, 733 L.A. County Engineering Building, sufficient to cover the cost of construction inspection and record plans.

Approval of this plan by the County of Los Angeles does not constitute a representation as to the accuracy of the location of or the existence or non-existence of any underground utility, pipe, or structure within the limits of this project. This note applies to all sheets.

If work is to be done in a State Highway, a permit must be obtained from the State of California, Division of Highways, 120 South Spring Street.

COUNTY OF LOS ANGELES, CALIFORNIA

Approved, William J. Fox, County Engineer  
Approved, A. M. Rawlin  
CHIEF ENGR. CO. SAN. DIST. NO. 18  
By *A. P. Collins*  
SANITATION ENGINEER  
Checked by *R. L. ...*  
Office of County Engineer, Reg. C. E. No. 7860

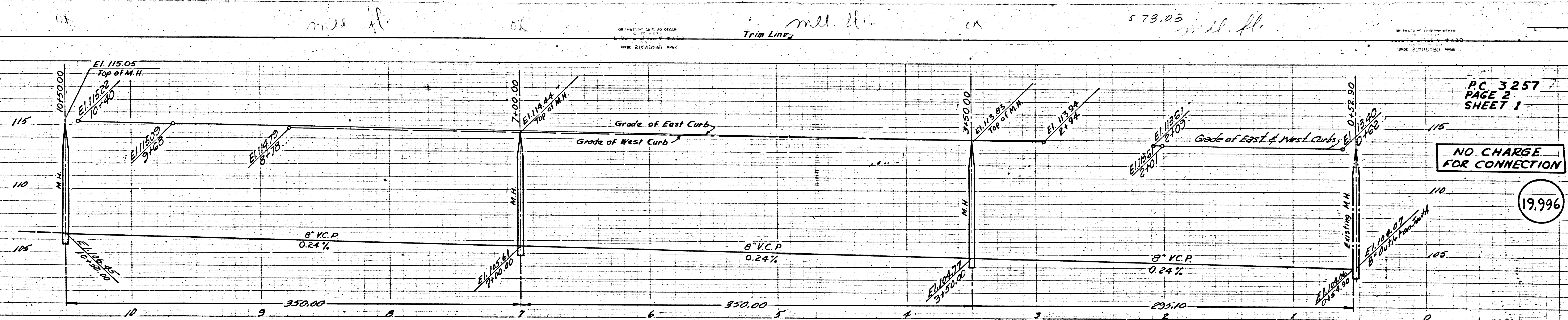
P.C. 3257  
PAGE 1  
SHEET 1

19995

(13)

P.C. 3257  
 TRACT NO 16167  
 TESS C.D.  
 11/19/54

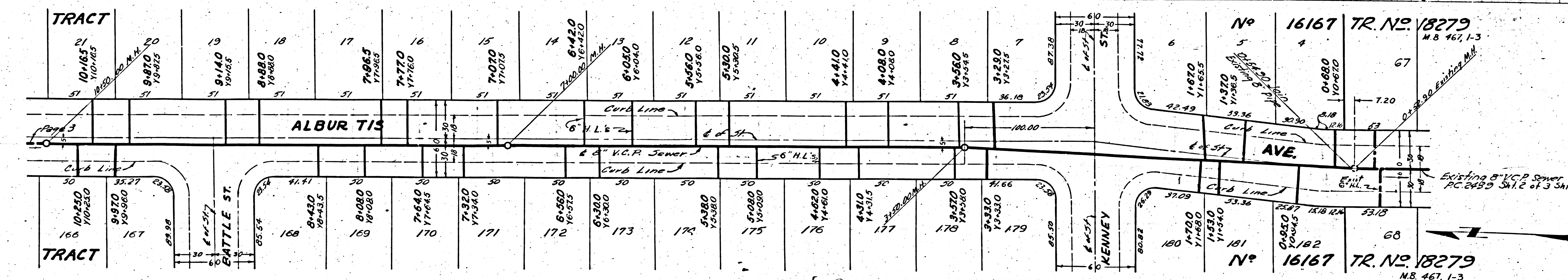
1



PC 3257  
PAGE 2  
SHEET 1

NO CHARGE  
FOR CONNECTION

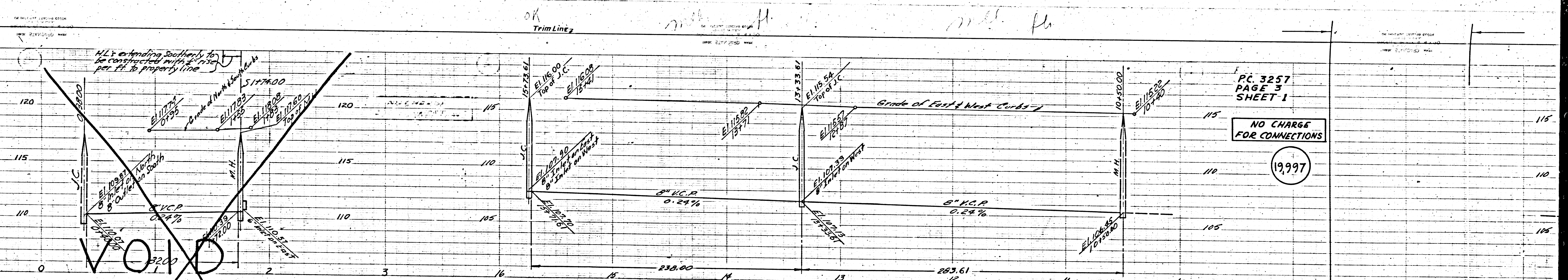
19.96



Existing 8" V.C.P. Sewer  
PC 2435 Sht. 2 of 3 Shts.

No. 16167 TR. No. 18279  
M.B. 467, 1-3

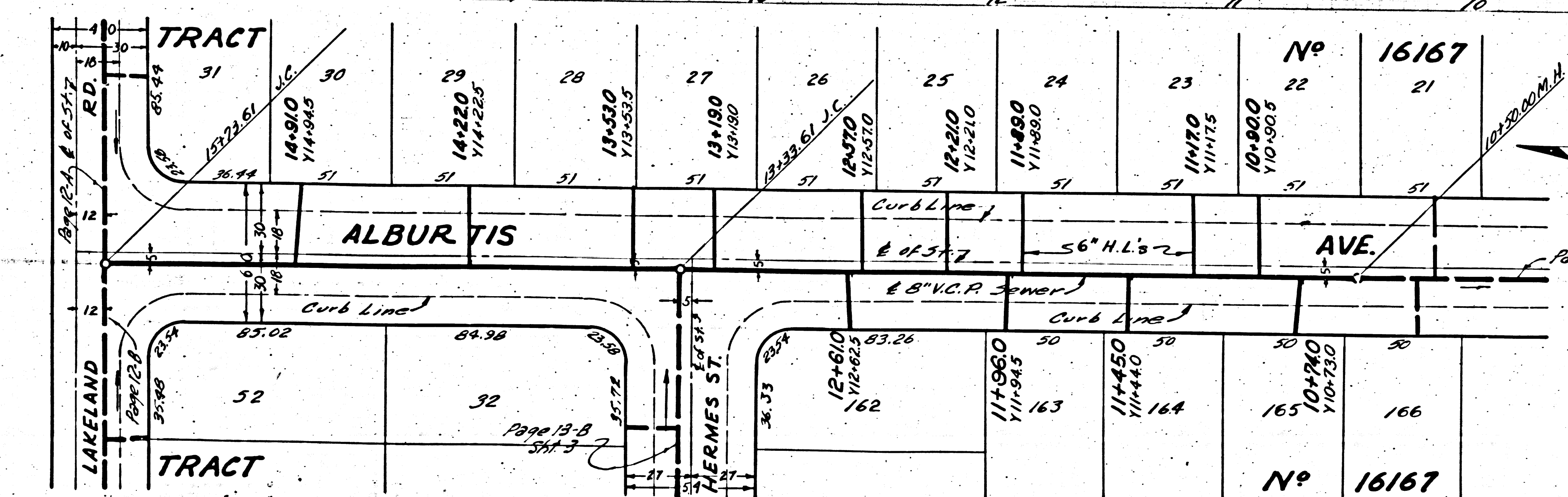
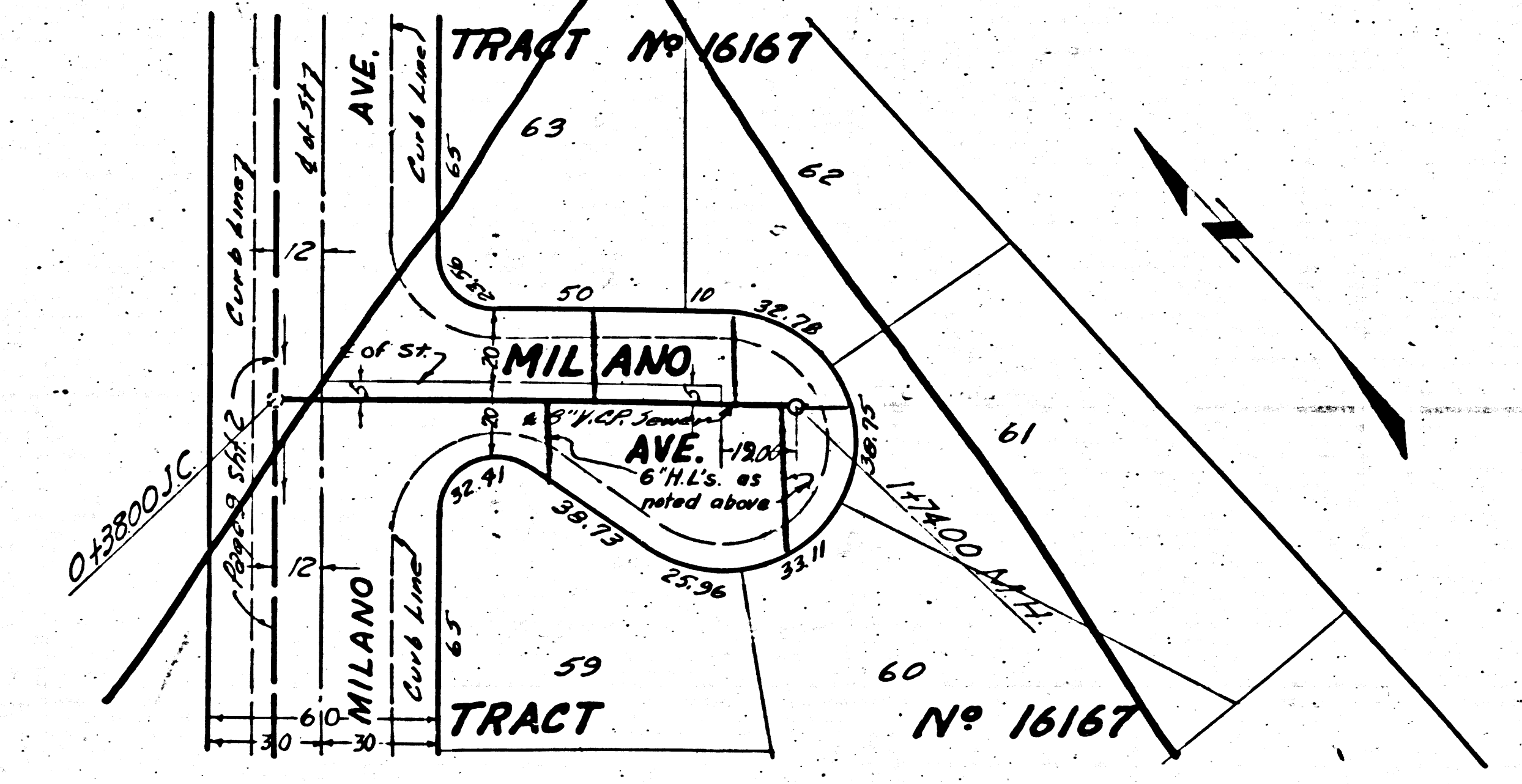
Trim Line (14)



PC 3257  
PAGE 3  
SHEET 1

NO CHARGE  
FOR CONNECTIONS

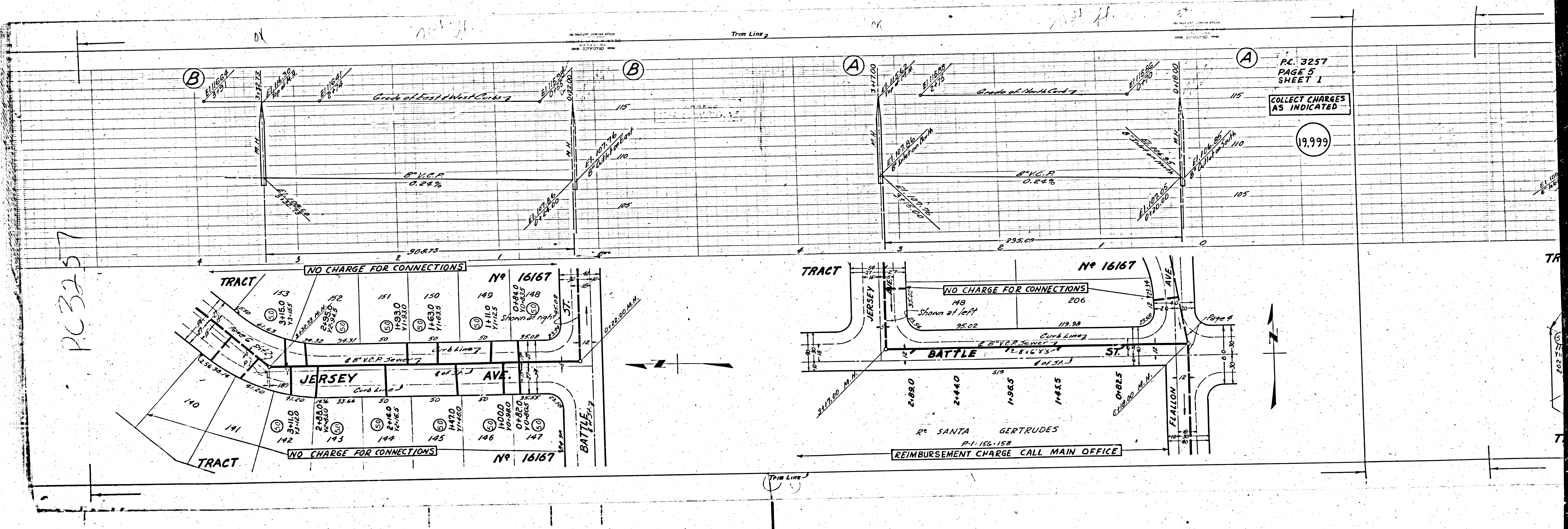
1997



(13)



PC 3257

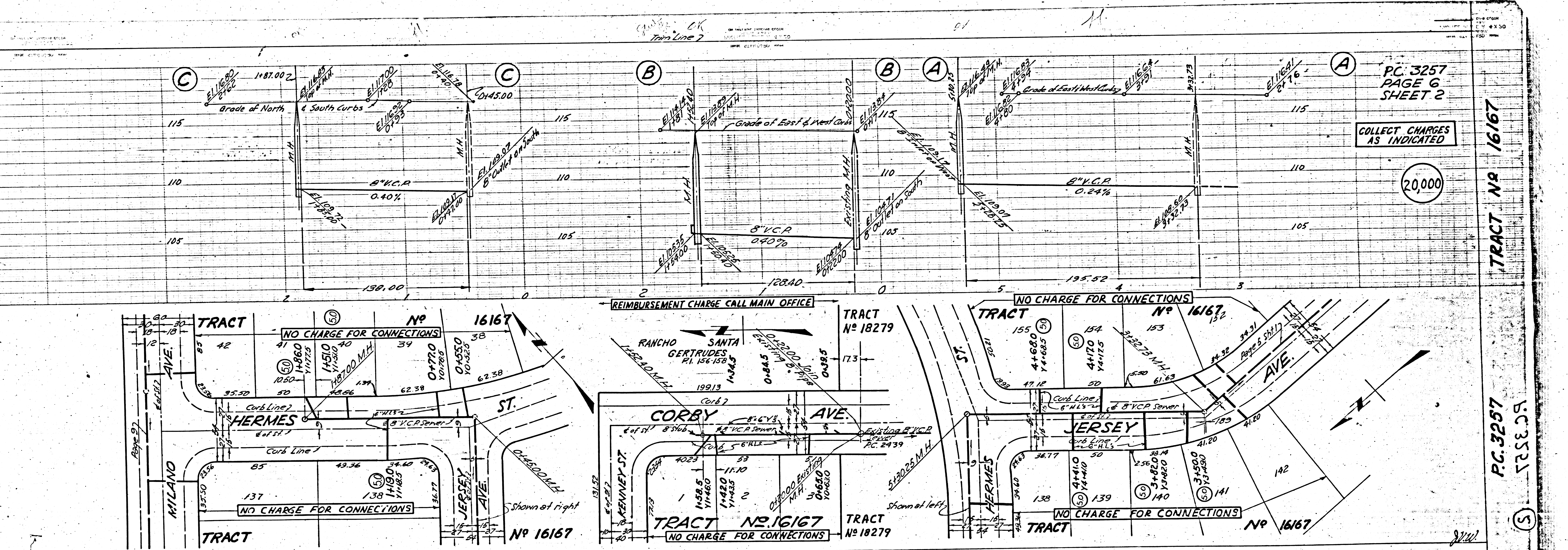


P.C. 3257  
PAGE 5  
SHEET 1

COLLECT CHARGES  
AS INDICATED

19,999

REIMBURSEMENT CHARGE CALL MAIN OFFICE



PC. 3257  
PAGE 6  
SHEET 2

COLLECT CHARGES  
AS INDICATED

20,000

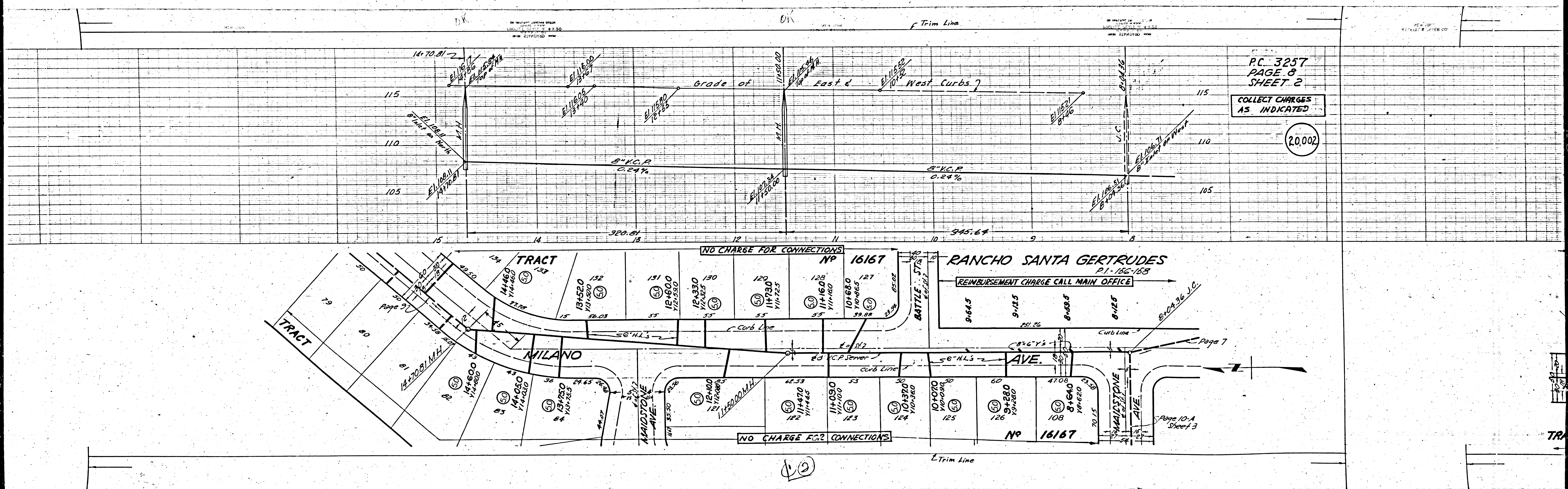
TRACT NR 16167

TRACT NR 18279

TRACT NR 16167

Trim Line





PC 3257  
PAGE 8  
SHEET 2

COLLECT CHARGES  
AS INDICATED

20,002

20

L Trim Line

Grade of East & West Curbs

8" V.C.P. 0.24%

8" V.C.P. 0.24%

RANCHO SANTA GERTRUDES  
P.I. 156-158

REIMBURSEMENT CHARGE CALL MAIN OFFICE

NO CHARGE FOR CONNECTIONS  
NO 16167

NO CHARGE FOR CONNECTIONS  
NO 16167

Page 7

Page 10-A  
Sheet 3

DK

OK

f Trim Line

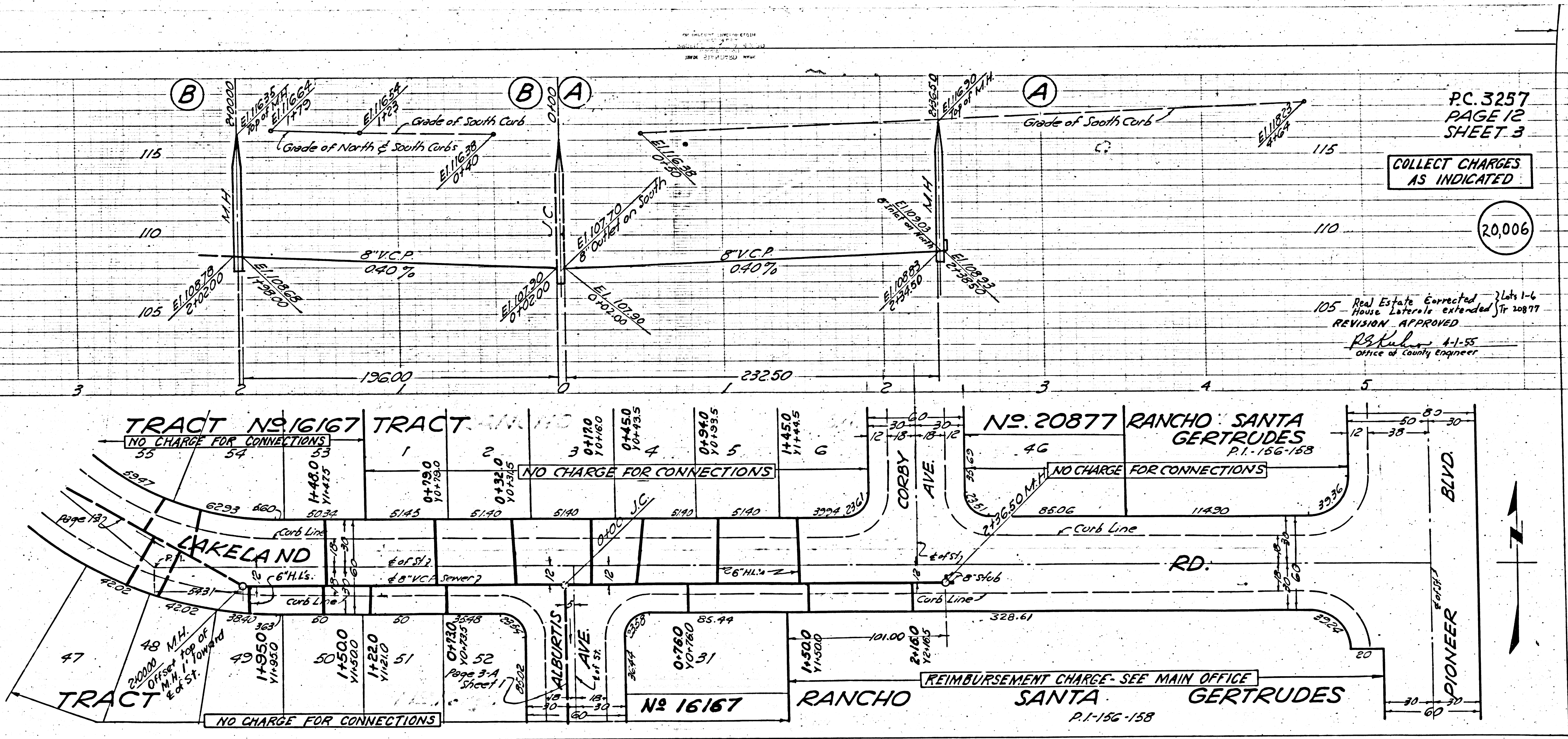
NEW YORK  
KENNETH S. JONES CO.











PC. 3257  
PAGE 12  
SHEET 3

COLLECT CHARGES  
AS INDICATED

20,006

105 Real Estate Corrected } Lots 1-6  
House Lateral extended } Tr. 20877  
REVISION APPROVED  
R. Stuber 4-1-55  
Office of County Engineer

TRACT NO. 16167 TRACT NO. 16167

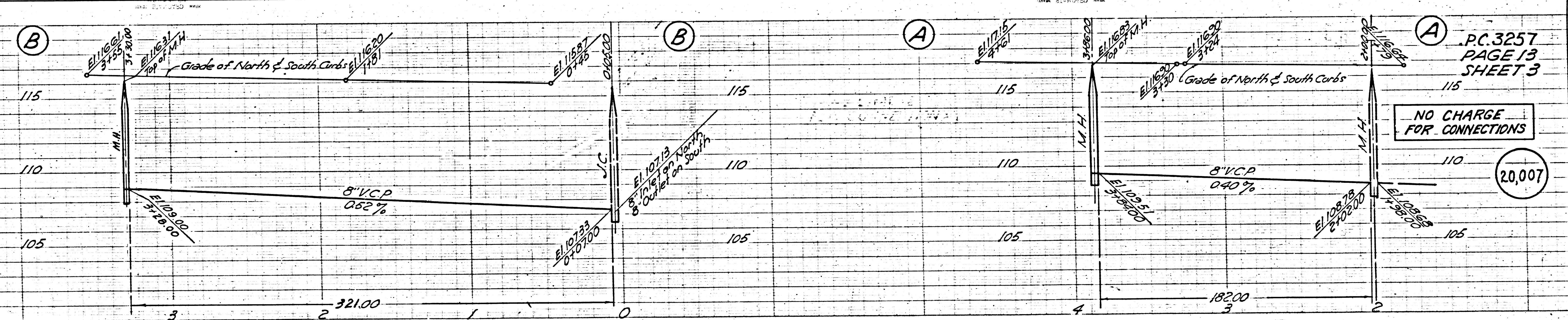
NO. 20877 RANCHO SANTA GERTRUDES P.I. 156-158

LAKELAND

RANCHO SANTA GERTRUDES P.I. 156-158

REIMBURSEMENT CHARGE-SEE MAIN OFFICE

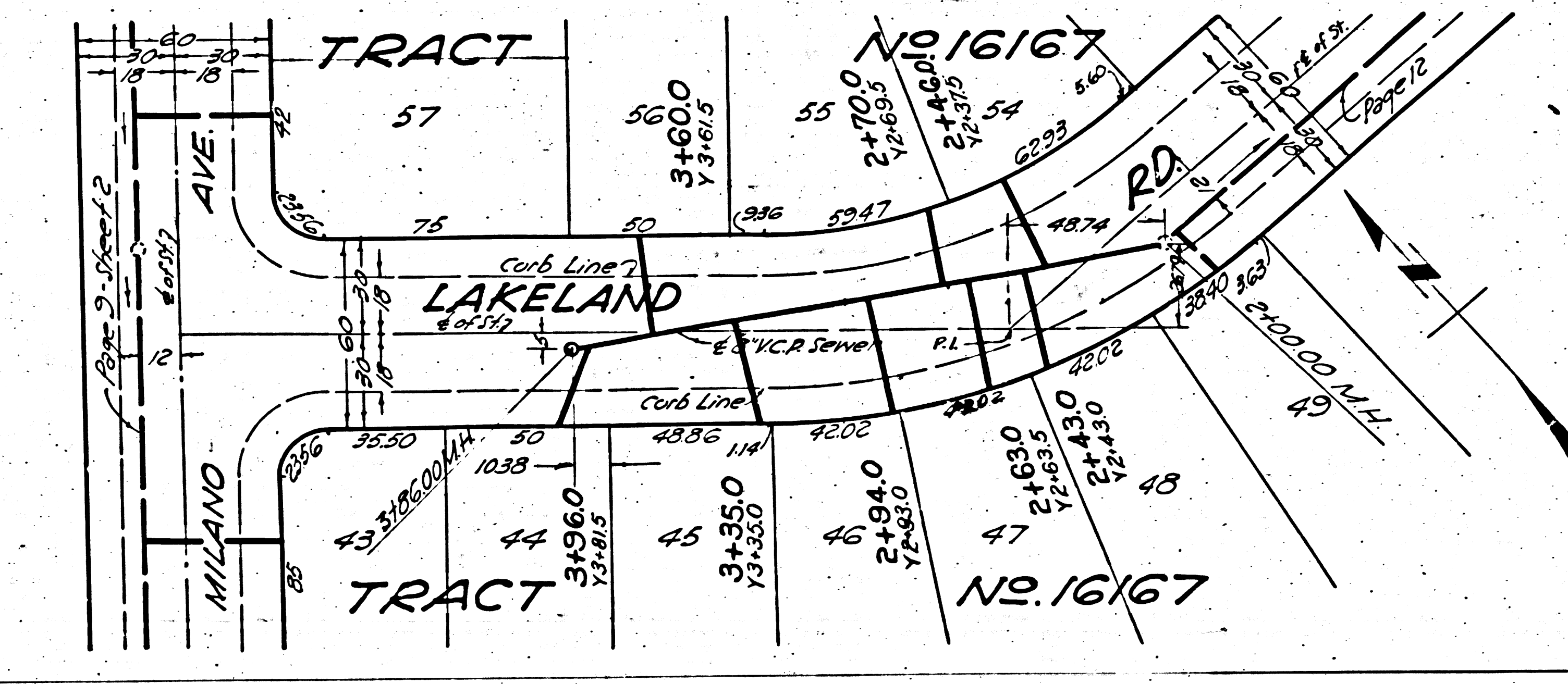
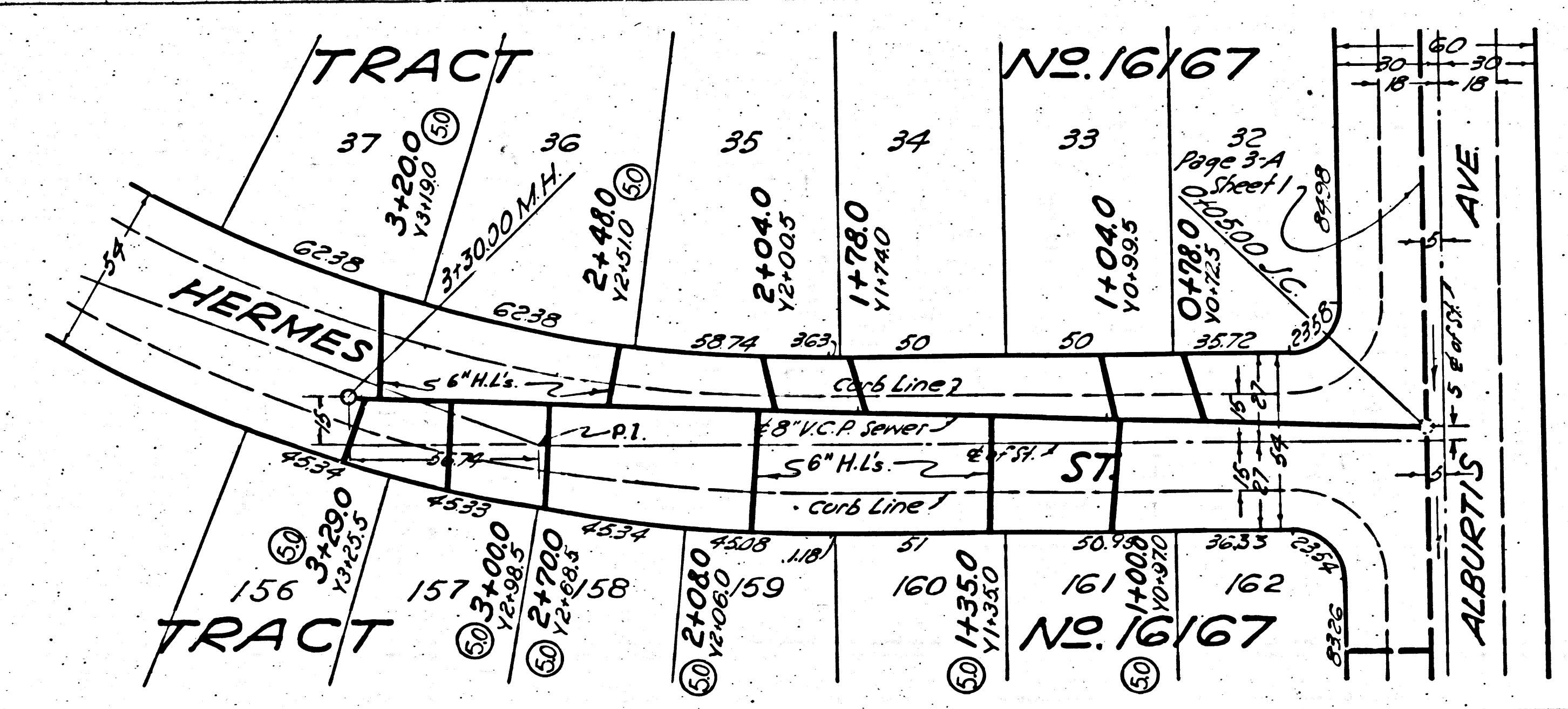
D-3



PC. 3257  
PAGE 13  
SHEET 3

NO CHARGE  
FOR CONNECTIONS

20,007



PC 3257

Trim Line