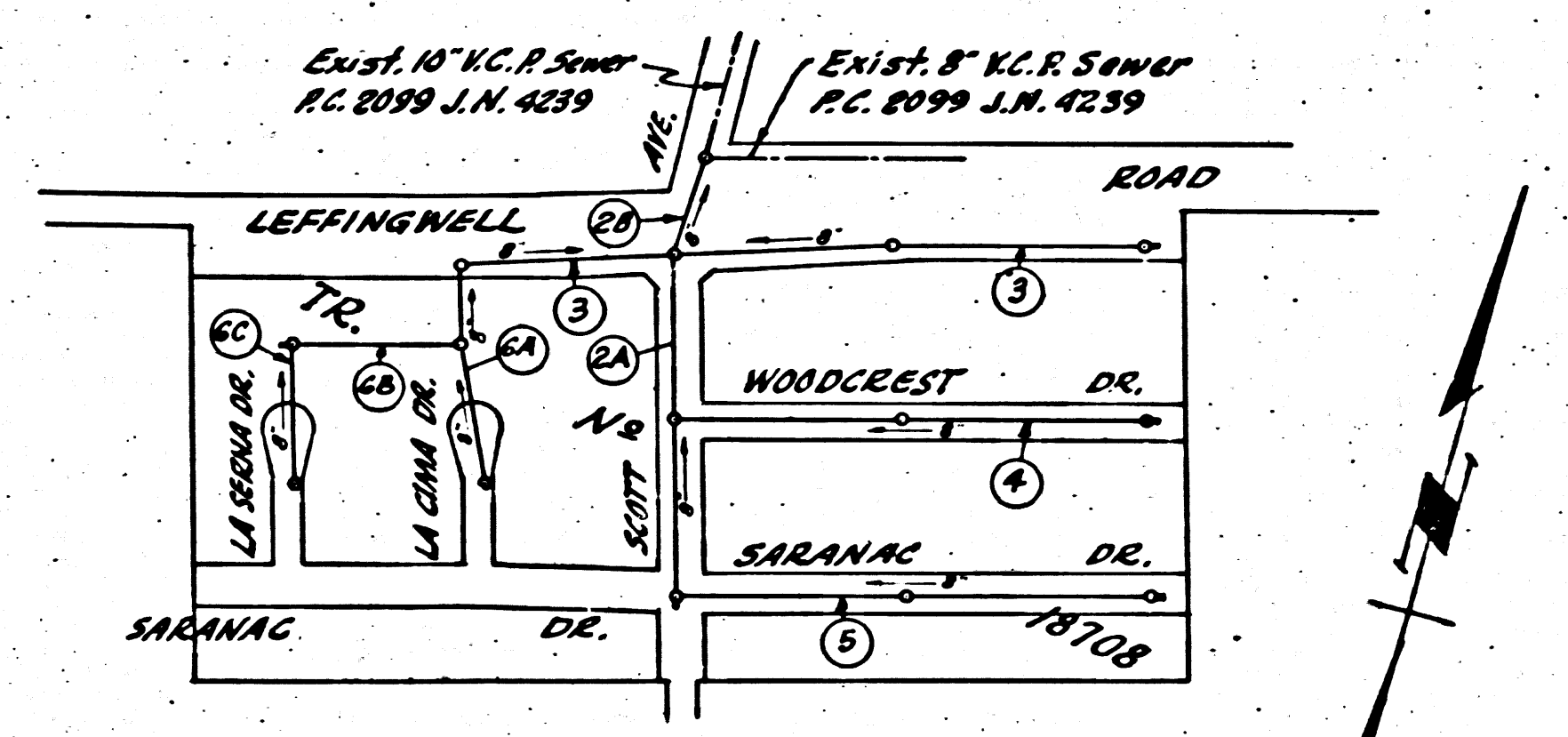


Trim Line 7

B.M. S.Y. 1153, 1952 C.S. Monument
13' EAST OF INTERSECTION OF STAMY RD
(RUNNING NORTH) AND LEFFINGWELL RD.
3' SOUTH OF E. LEFFINGWELL RD.
ELEV. 225.487

PART OF
PAGE 1
P.C. 3263

NOTE: THE FOLLOWING LOTS OF TRACT NO. 18708
ARE UNABLE TO BE SERVED BY THIS SEWER
SYSTEM, P.C. 3263: 52 THRU 60, 61, 62
63 THRU 71, 80, 94 AND 95.



INDEX MAP
SCALE: 1" = 300'
P.C. 3263 TRACT NO. 18708

Sheet No.	Pages
1	1-5
2	6-8

Trim Line 8

BELLFLOWER BLDG. DIST. NO. 4

- USE STANDARD STRENGTH PIPE EXCEPT AS NOTED.
- USE CEMENT MORTAR FOR ALL VITRIFIED CLAY PIPE JOINTS.
- ENGAGE FOUR FEET OF SEWER AT POINTS OF INTERFERENCE WITH POLES AS PER S. & S.
- CONSTRUCT HOUSE LATERALS WITH INVERT AT PROP. LINE 6 FEET BELOW CURB GRADE EXCEPT AS NOTED.
- ALL STRUCTURES SHALL BE BRICK SEWER STRUCTURES AS PER PLAN NO. S-8-104 EXCEPT AS NOTED.
- USE STANDARD MANHOLE FRAMES AND COVERS AS PER PLAN NO. S-8-117 EXCEPT AS NOTED.
- CONSTRUCT TOPS OF ALL STRUCTURES IN RIGHTS OF WAY 6" ABOVE FINISHED GRADE.
- RESURFACE ALL TRENCHES WITHIN PAVED AREA TO MEET LOS ANGELES COUNTY ROAD DEPT. OR STATE HIGHWAY REQUIREMENTS IN ACCORDANCE WITH PERMIT.

NO REVISIONS SHALL BE MADE IN THESE PLANS WITHOUT APPROVAL OF THE COUNTY ENGINEER. NO REPRESENTATIVE OF THE COUNTY ENGINEER WILL SURVEY OR LAY OUT ANY PORTION OF THE WORK.

THE OWNER OR HIS AUTHORIZED REPRESENTATIVE SHALL FURNISH THE COUNTY ENGINEER WITH GRADE SHEETS AND STATIONS OF ALL HOUSE LATERALS AND T BRANCHES AND SHALL PROVIDE STAKES FOR THEM AT THEIR PROPER LOCATIONS WITH STATIONING PLAINLY MARKED. ANY CHANGE OF LOCATION SHALL BE REQUESTED IN WRITING BY THE OWNER OR HIS REPRESENTATIVE.

FOR ALLOWABLE LEAKAGE TEST, USE FORMULA NO. 1, SPEC'S. SEC. 51

APPROVAL OF THIS PLAN BY THE COUNTY OF LOS ANGELES DOES NOT CONSTITUTE A REPRESENTATION AS TO THE ACCURACY OF THE LOCATION OF, OR THE EXISTENCE OR NON-EXISTENCE OF, ANY UNDERGROUND UTILITY, PIPE OR STRUCTURE WITHIN THE LIMITS OF THIS PROJECT. (THIS NOTE APPLIES TO ALL SHEETS)

NO CHARGE
FOR CONNECTIONS
Reference 3-29-55

Checked 2-14-56 W. H. ...

(14)

P.C. 3263
PAGE 1
22,190
SANITARY SEWERS
TO BE CONSTRUCTED IN
TRACT NO. 18708

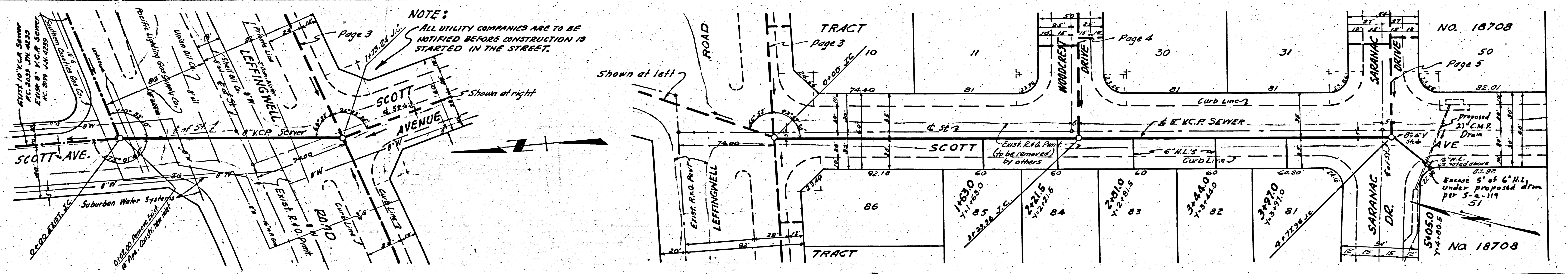
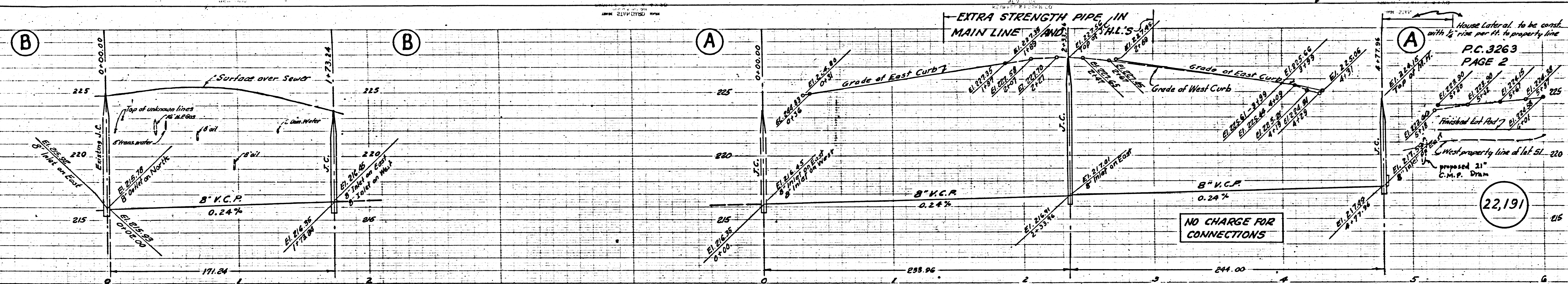
PRIVATE CONTRACT NO. 3263
W. S. 34
SHEET 1 OF 2 SHEETS
FEBRUARY-1955
PREPARED IN THE OFFICES OF
KEMMERER ENG. CO., INC.
BY: *Thomas C. Johnson*
REG. C. E. NO. 8748

FOR LEGEND
SEE PLAN NO. S-8-84

NOTE: GRADES TO WHICH THIS IMPROVEMENT IS TO BE CONSTRUCTED ARE SHOWN ON PLANS AND PROFILES. GRADE POINTS FOR TOP OF CURB CENTER LINE OF STREET OR CENTER LINE OF ALLEY ARE SHOWN BY CIRCLES ON PROFILES AT ALL POINTS BETWEEN DESIGNATED POINTS THE GRADE SHALL BE ESTABLISHED SO AS TO CONFORM TO A STRAIGHT LINE DRAWN BETWEEN SAID DESIGNATED POINTS. ELEVATIONS ARE IN FEET ABOVE U. S. G. S. DATUM OR MEAN SEA LEVEL. THIS DRAWING AND THE DATA HEREON ARE HEREBY MADE A PART OF THE SPECIFICATIONS. WORK SHALL BE CONSTRUCTED ACCORDING TO SPECIFICATIONS ON FILE IN THE OFFICE OF THE COUNTY ENGINEER AND SHALL BE PROSECUTED ONLY IN THE PRESENCE OF THE COUNTY ENGINEER. BEFORE WORK CAN BE STARTED, THE CONTRACTOR MUST OBTAIN A PERMIT TO EXCAVATE IN COUNTY STREETS FROM THE L. & A. COUNTY ROAD DEPT. FOR WORK IN LOS ANGELES AND MAKE A DEPOSIT WITH THE COUNTY ENGINEER ROOM AT 108 W. 10TH STREET, SUFFICIENT TO COVER THE COST OF CONSTRUCTION INSPECTION AND RECORD PLANS. IF WORK IS TO BE DONE IN A STATE HIGHWAY A PERMIT MUST BE OBTAINED FROM THE STATE OF CALIFORNIA, DIVISION OF HIGHWAYS, 160 SO. STRONG ST.

COUNTY OF LOS ANGELES, CALIFORNIA
WILLIAM J. FOX, County Engineer
APPROVED: *W. J. Fox*
Sanitation Engineer
APPROVED BY: *J. P. ...* OFFICE ENGR.
SANITATION DISTRICT NO. 18
CHECKED BY: *W. H. ...* 3-22-1955
OFFICE OF COUNTY ENGINEER, REG. C. E. NO. 1866

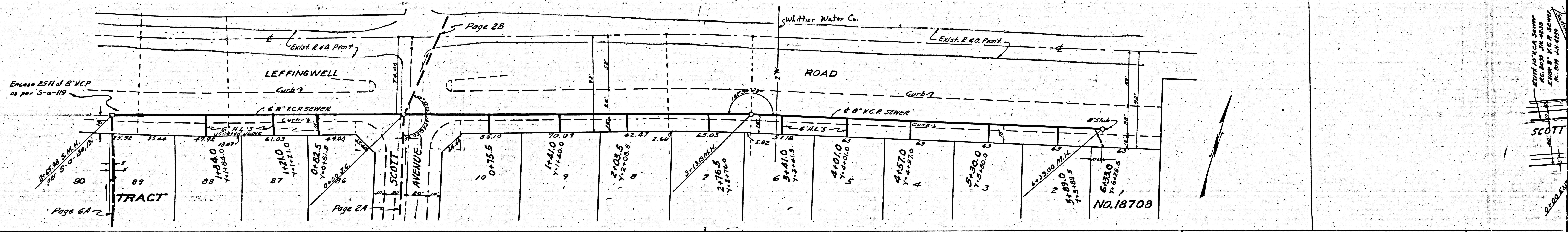
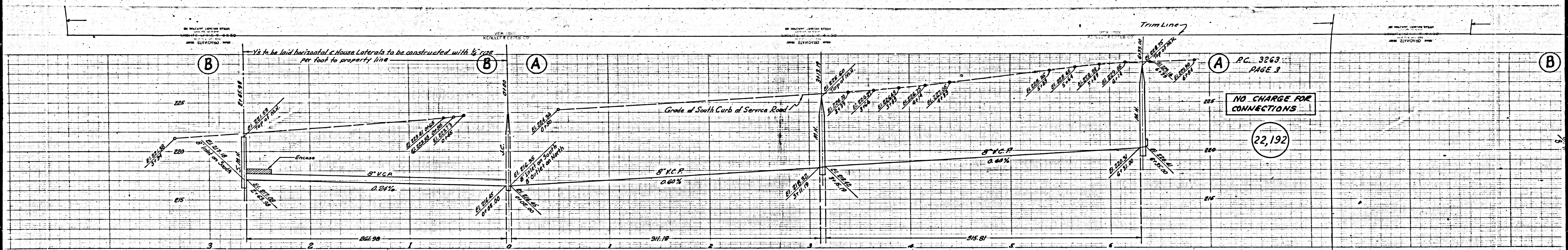
TRACT No. 18708
P.C. 3263
1



House Lateral, to be coord. with 1/2" rise per ft. to property line
 P.C. 3263
 PAGE 2
 22,191

NO CHARGE FOR CONNECTIONS

P.3



1/2 to be laid horizontal & House Laterals to be constructed with 1/2 size per foot to property line

P.C. 3263
PAGE 3

NO CHARGE FOR CONNECTIONS

22,192

Encase 25 ft of 8" VCP as per S-a-119

Page 6A

Page 2A

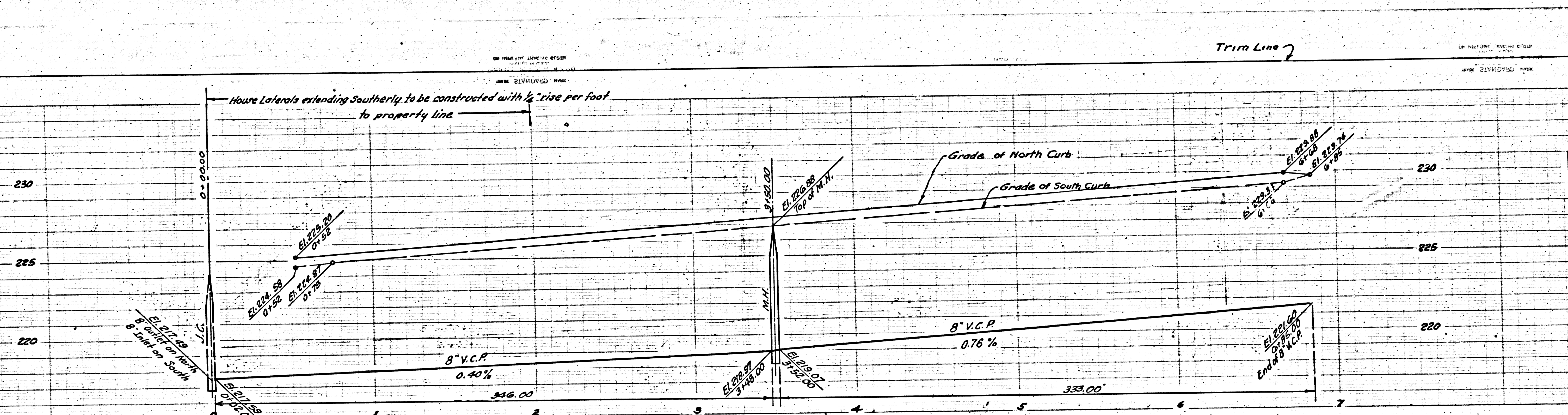
Page 2B

NO. 18708

7/27/10 V.C.P. Sewer
P.C. 3263 J.M. 4233
E.P. 89 V.C.P. Sewer
P.C. 3263 J.M. 4233

SCOTT

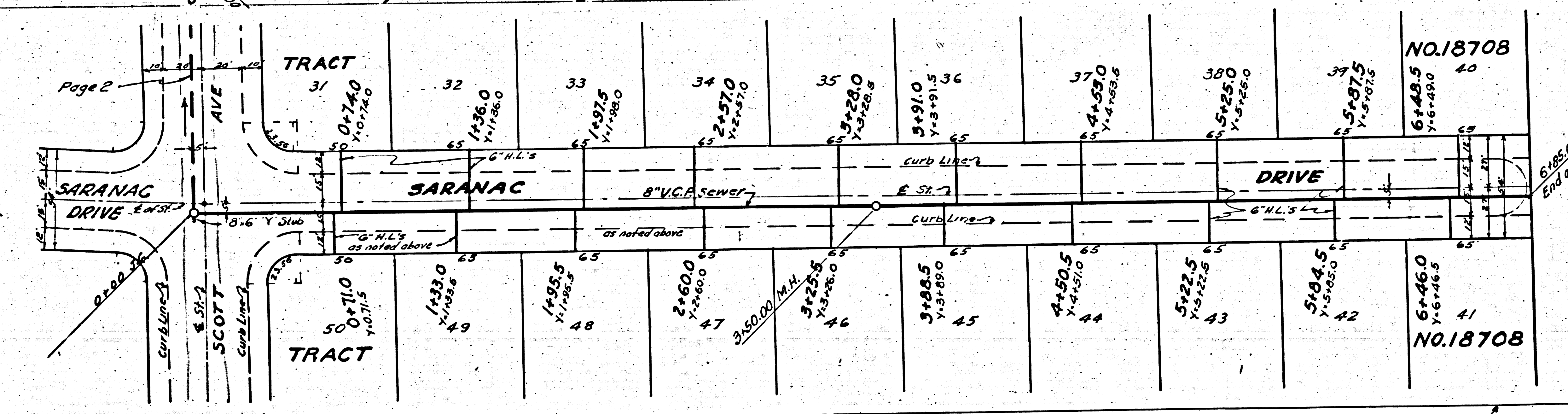
SCOTT



PC 3263
PAGE 5

NO CHARGE FOR CONNECTIONS

22,194



REVISION APPROVED:
Richard 10-13-55
 Office of County Engineer
 Rep. C.C. #7860

② TRACT No. 18708
 PC 3263
 ESSLER

