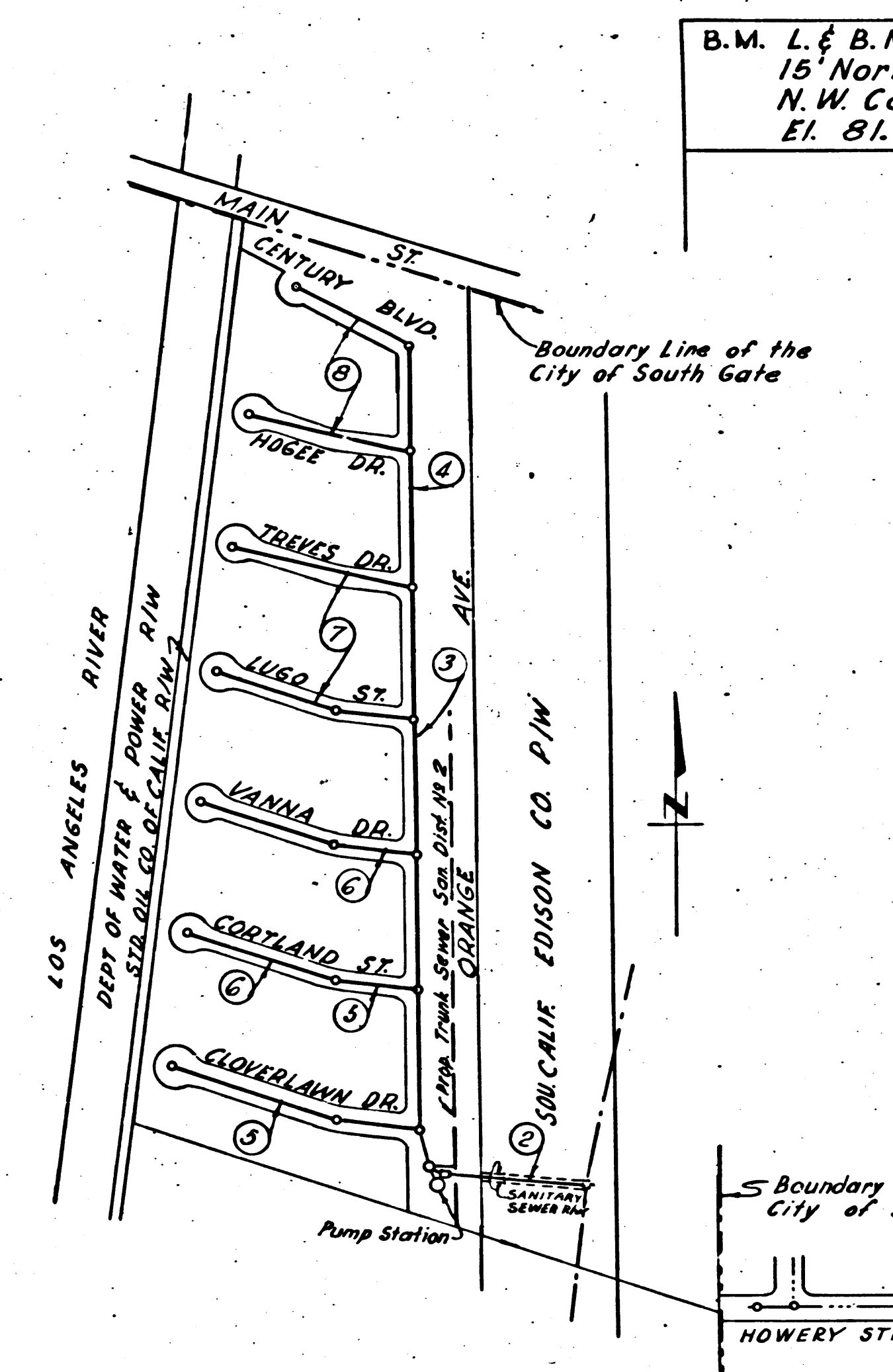


266
2

CHARGE CONNECTIONS

642

SEWER
Sec. 5



B.M. L & B.N on W. side Garfield Avenue
15' North of most Nly Curb Ret.
N.W. Corner Garfield Ave. & Main St.
El. 81.93
SY 1902

SHEET	PAGE
1	1-A
2	3-B
3	Pump Sta.
4	Pump Sta.

INDEX MAP
SCALE 1"=300'
TRACT NO 16832
P.C. 3266

BELLFLOWER BLDG. DIST. NO 4

NOTE:
Provide stakes on the property lines or property lines produced at right angles to the sewer line at the center line of each manhole.
No representative of the County Engineer will survey or layout any portion of the work.
The owner or his authorized representative shall furnish the County Engineer with grade sheets and stations for all house laterals and Y branches and shall provide stakes for them at their proper locations with stationing plainly marked. Any change in location shall be requested in writing by the owner or his representative.
No revisions shall be made in these plans without the approval of the County Engineer.

1. Use standard manhole frames and covers, S-a-117.
2. Use standard strength pipe except as noted.
3. Use cement mortar for all vitrified clay pipe joints.
4. Resurface all trench within paved area to meet L.A. County Road Dept. or Calif. State Highway Dept. requirements in accordance with permit.
5. Encase four feet of sewer at points of interference with poles, S-a-119.
6. House laterals to be constructed with inverts at property line.....2 feet below curb grade except as noted.
7. All structures shall be brick sewer structures, S-a-104.
8. Manhole tops in unimproved Rights-Of-Way to be 6" above finish grade.
9. For allowable leakage test, use Formula No. 1..... Spec's, Sec. 51.
10. The Contractor shall satisfy himself of all Substructures and shall be responsible for their location.

Before breaking into any existing structure and before final acceptance of this work, County Sanitation District should be notified in order that required inspection may be made.

NO CHARGE FOR CONNECTIONS
L. Carlson - 4-21-55

Checked 6-14-55 [Signature]

Trim Line

Trim Line

PROFILE, ALIGNMENT AND GRADE OF
SANITARY SEWERS
TO BE CONSTRUCTED IN

TRACT NO 16832

PRIVATE CONTRACT NO. 3266
W. S. 32
FOUR SHEETS
APRIL 1955
PREPARED IN THE OFFICES OF
WM. H. FAIR, JR.
FOR LEGEND SEE PLAN NO. S-a-64

NOTE:
Grades to which this improvement is to be constructed are shown on plans and profiles. Grade points for top of curbs, center line of streets, or center line of alleys are shown by circles on profiles. At all points between designated points the grade shall be established so as to conform to a straight line drawn between said designated points.
Elevations are in feet above U.S.G.S. datum or mean sea level.
This drawing and the data hereon are hereby made a part of the specifications.
Work shall be constructed according to specifications on file in the office of the County Engineer and shall be prosecuted only in the presence of the County Engineer.
Before work can be started, the contractor must obtain a permit to excavate in County streets from the L.A. County Road Dept., 108 W. 2nd St. and make a deposit with the County Engineer, Room 318, 253 South Broadway sufficient to cover the cost of construction inspection and record plans.
Approval of this plan by the County of Los Angeles does not constitute a representation as to the accuracy of the location of or the existence or non-existence of any underground utility, pipe, or structure within the limits of this project. This note applies to all sheets.
If work is to be done in a State Highway, a permit must be obtained from the State of California, Division of Highways, 120 South Spring Street.

COUNTY OF LOS ANGELES, CALIFORNIA
Approved, William J. Fox, County Engineer
Approved, A. M. Rawm
CHIEF ENGR. CO. SAN. DIST. NO. 2
By [Signature] Sanitation Engineer
By [Signature] Office Engineer
Checked By: [Signature] 4-21-55
Office of County Engineer, Reg. C. E. No. 7262

P.C. 3266
Page 1

20641

TRACT NO 16832

P.C. 3266

Page 1

RC 3266
Page 3

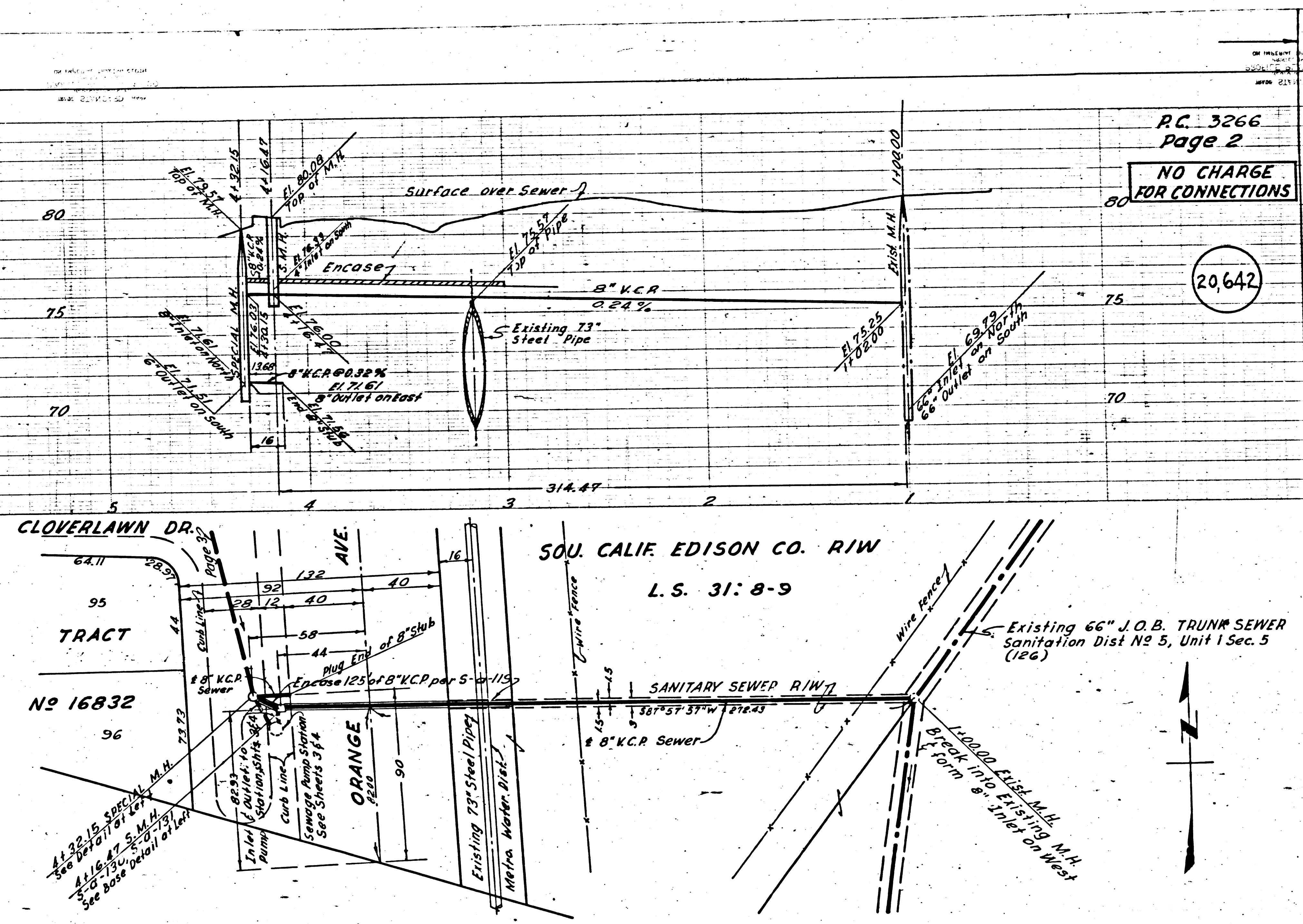
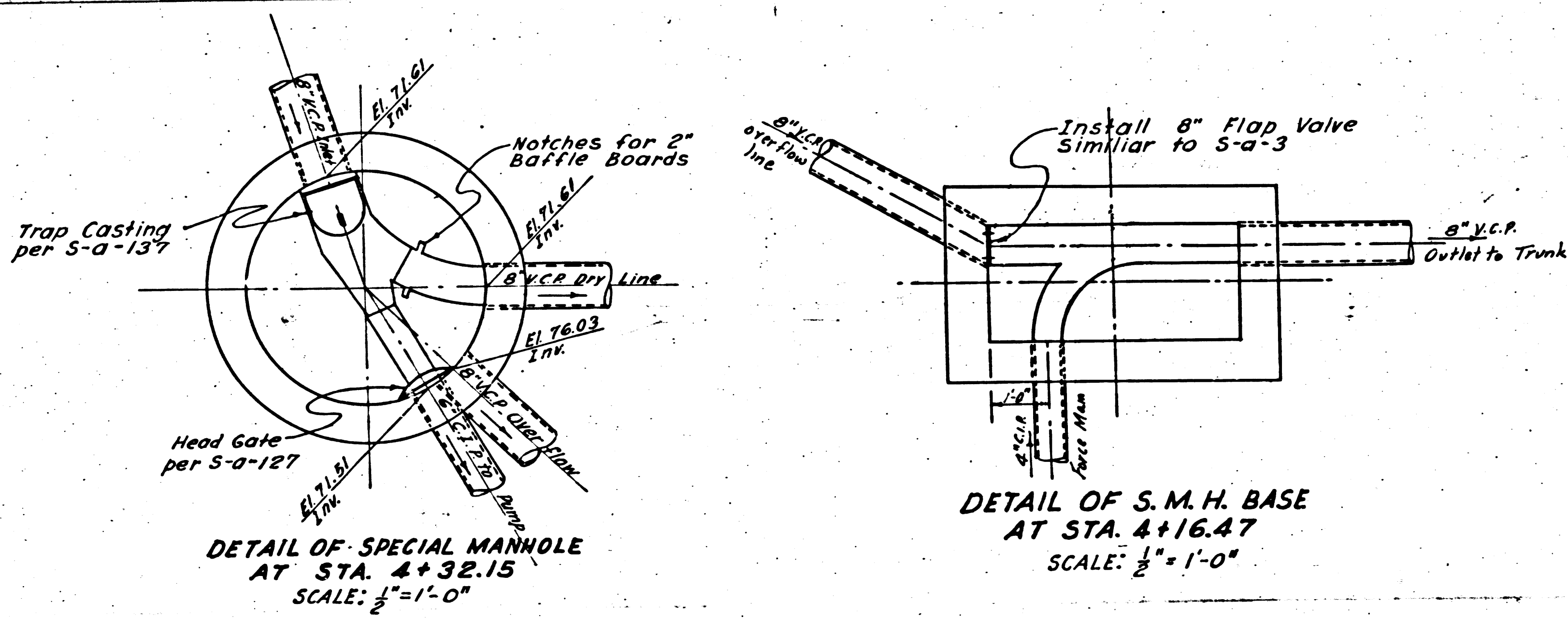
NO CHARGE
FOR CONNECTIONS

20,643

RC 3266
Page 2

NO CHARGE
FOR CONNECTIONS

20,642



RC 3266
Page 4

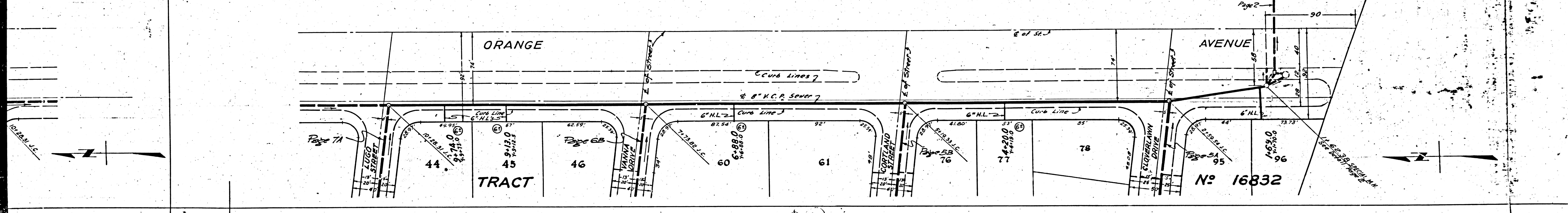
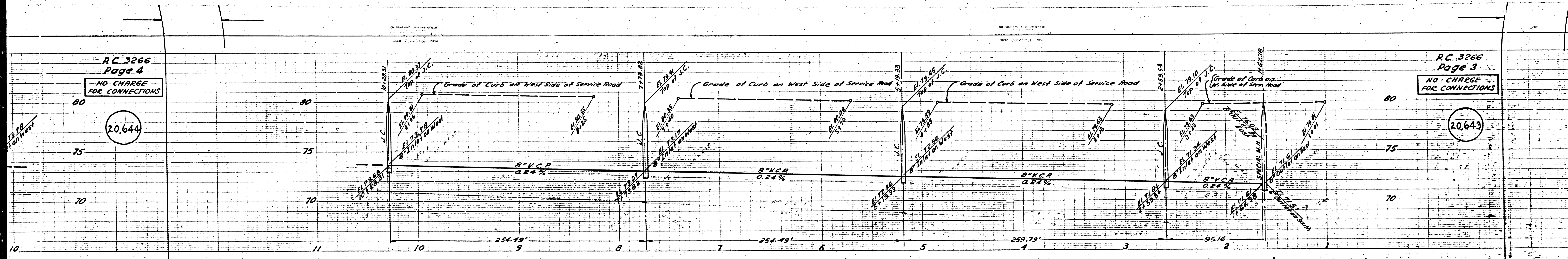
NO CHARGE
FOR CONNECTIONS

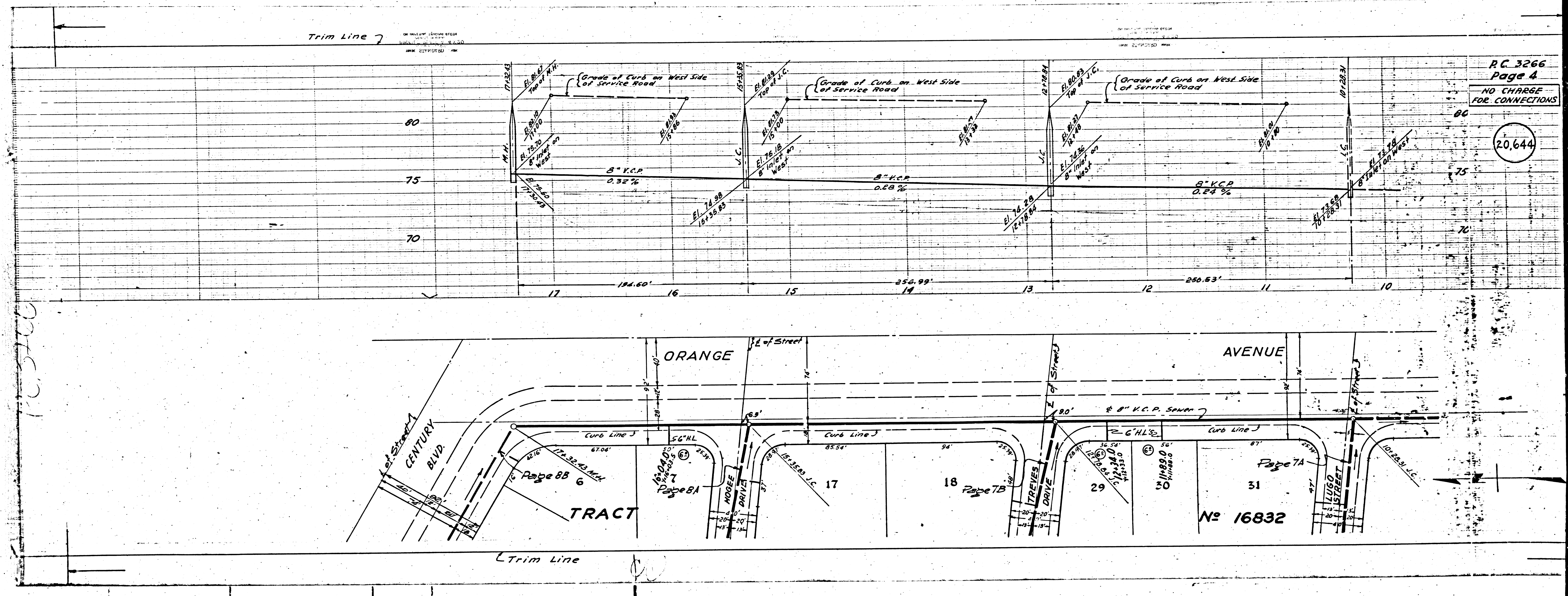
20,644

RC 3266
Page 3

NO CHARGE
FOR CONNECTIONS

20,643



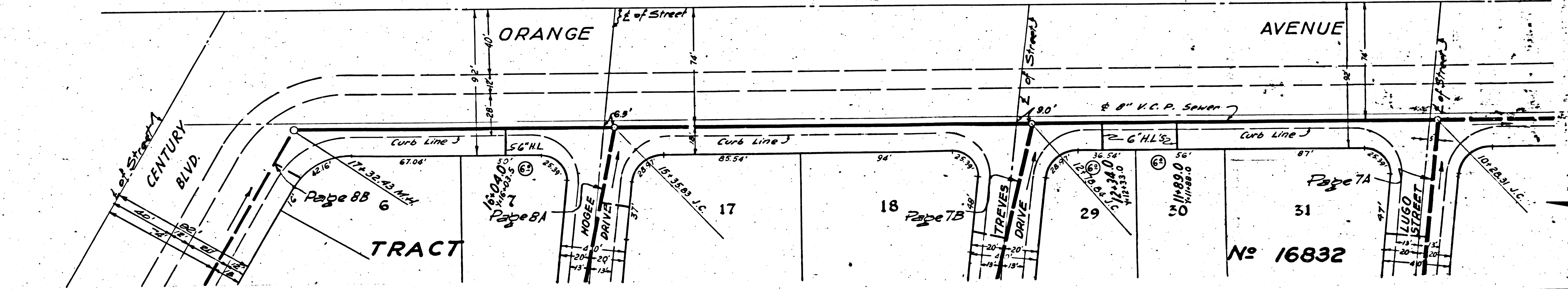


PC 3266
Page 4

NO CHARGE
FOR CONNECTIONS

20,644

PC 3266



Trim Line

P.C. 3266
Page 6

NO CHARGE FOR CONNECTIONS

20,646

Trim Line 7

A

A

P.C. 3266
Page 5

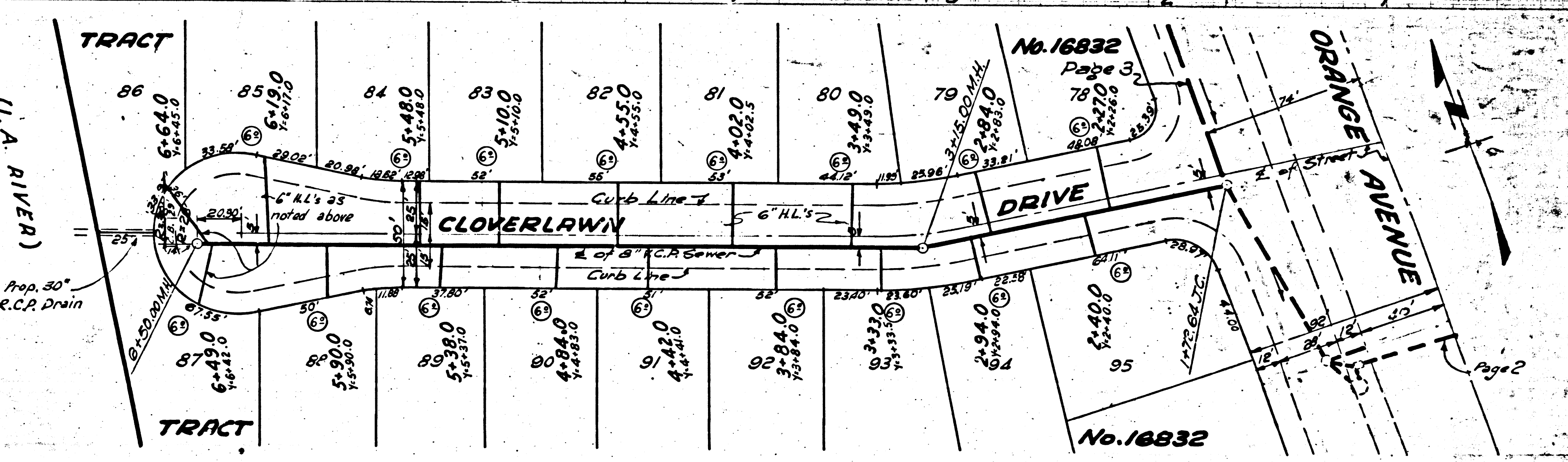
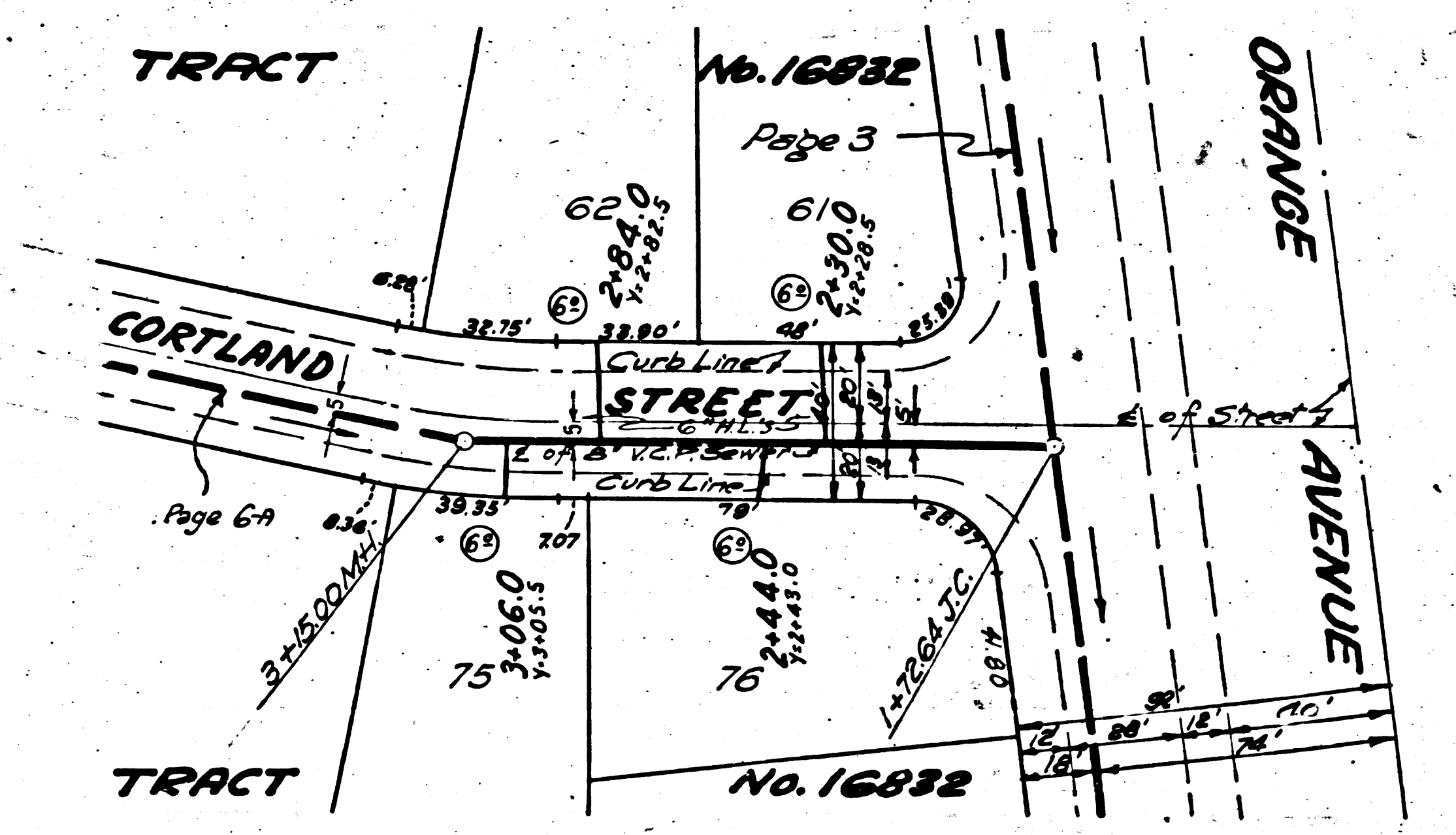
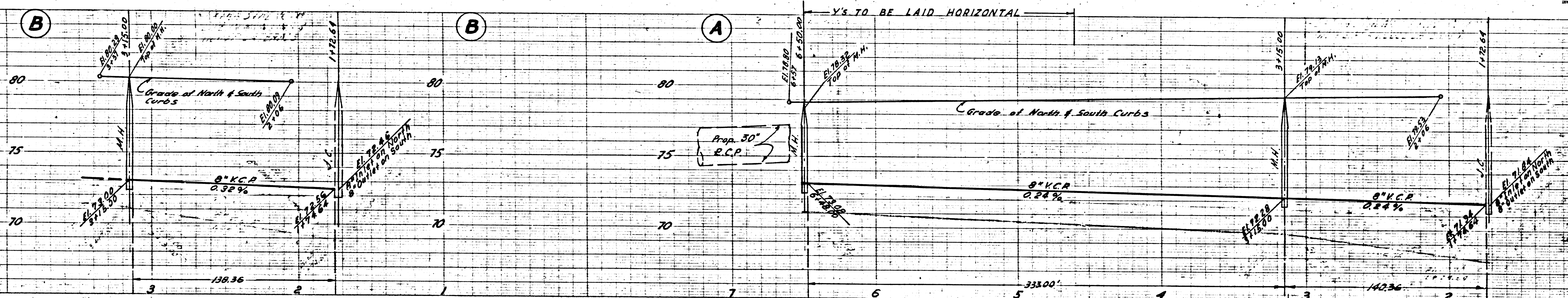
NO CHARGE FOR CONNECTIONS

20,645

TRACT No. 16832

P.C. 3266

5



Trim Line

DM

P.C. 3266
Page 7

NO CHARGE FOR CONNECTIONS

(20,647)

(B)

(B)

(A)

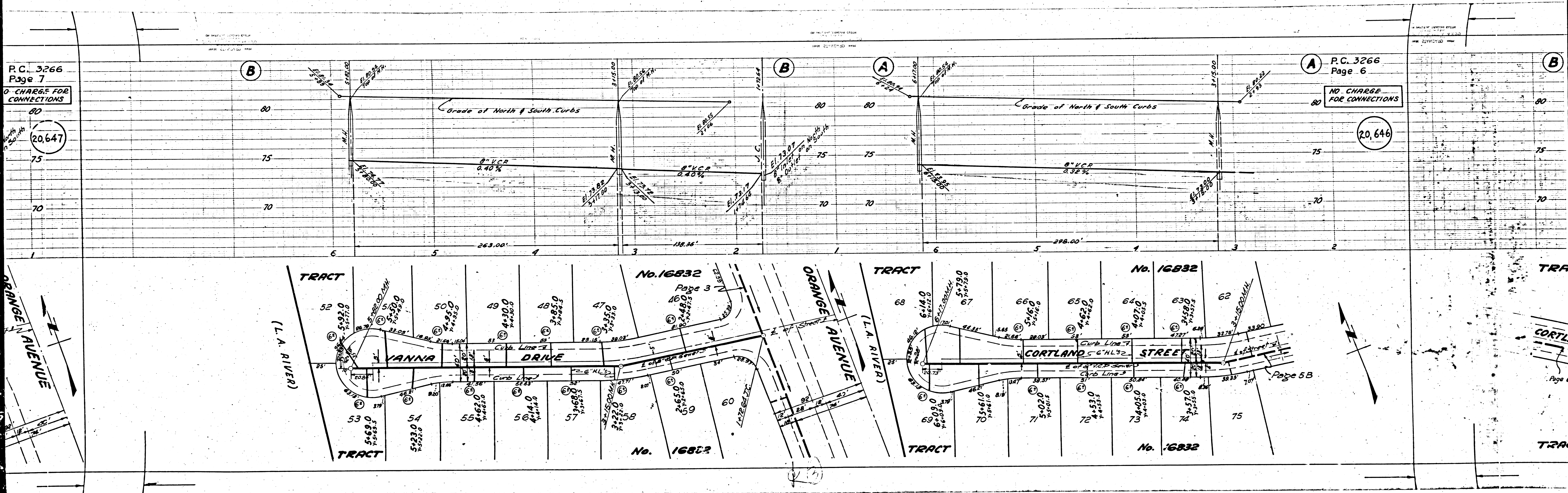
(A)

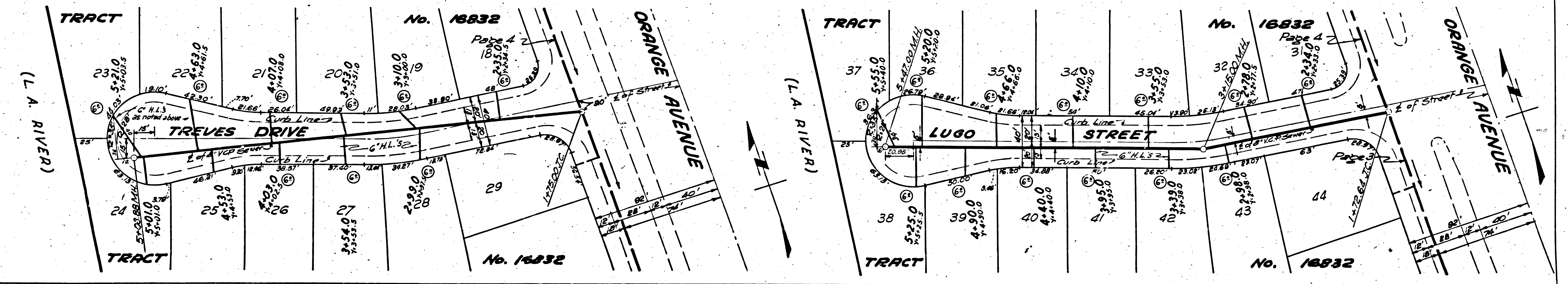
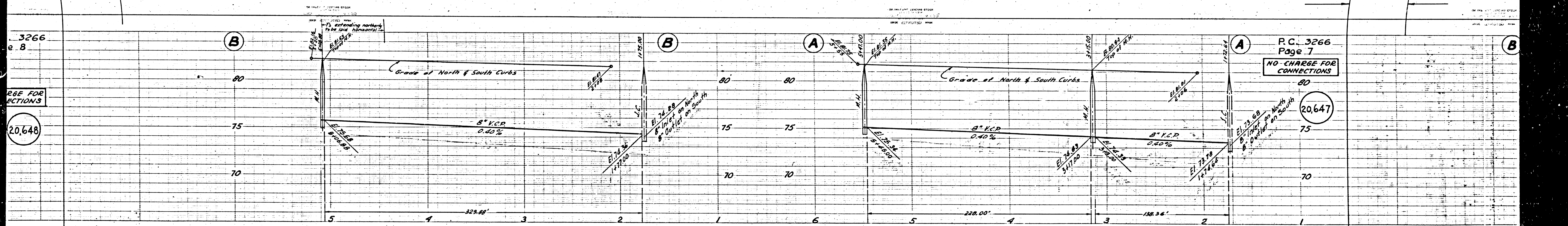
P.C. 3266
Page 6

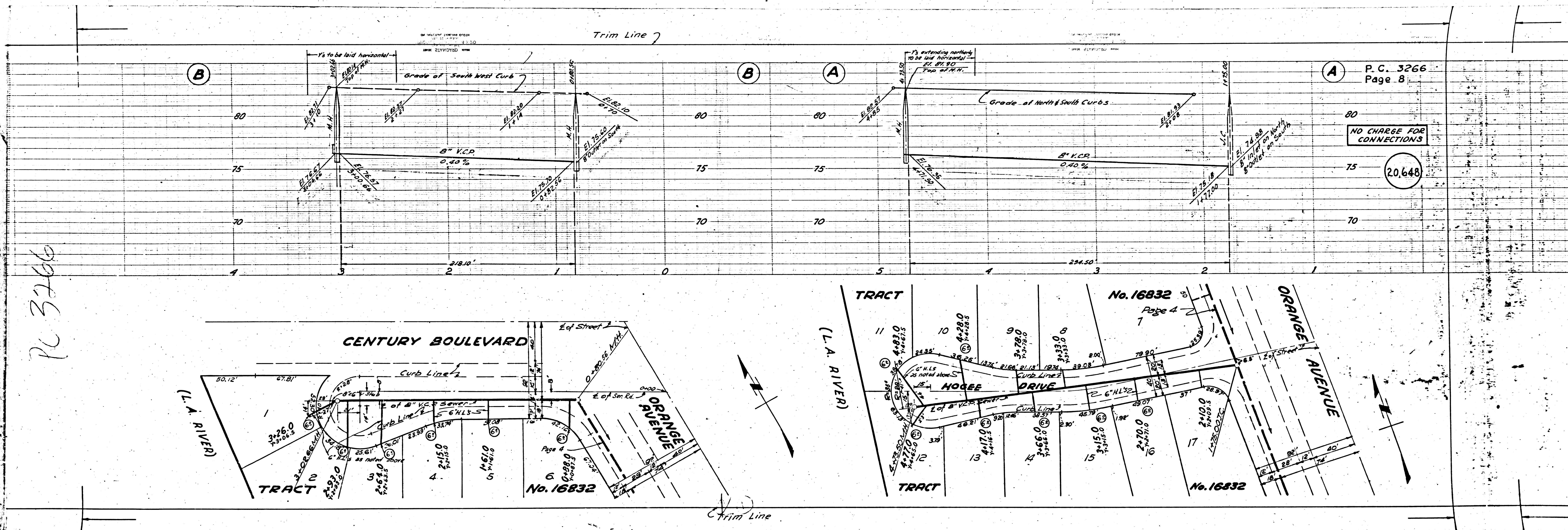
NO CHARGE FOR CONNECTIONS

(20,646)

(B)







PC 3266

P.C. 3266
Page 8

NO CHARGE FOR CONNECTIONS

20,648