

3270
2
ON
S
TED

B.M. - L.B. 37-D/90 B.M. # 6A - L & N in
concrete walk near steps to porch @ house
No. 562 47 1/2 W. & Baja Ave., 39 1/2 S. &
Central Ave. Elev. 959.975

Trim Line
PUENTE BLDG. DIST. No 2

- NOTE:**
- Provide stakes on the property lines or property lines produced at right angles to the sewer line at the center line of each manhole.
 - No representative of the County Engineer will survey or layout any portion of the work.
 - The owner or his authorized representative shall furnish the County Engineer with grade sheets and stations for all house laterals and Y branches and shall provide stakes for them at their proper locations with stationing plainly marked. Any change in location shall be requested in writing by the owner or his representative.
 - No revisions shall be made in these plans without the approval of the County Engineer.
- Use standard manhole frames and covers, S-a-117.
 - Use standard strength pipe except as noted.
 - Use cement mortar for all vitrified clay pipe joints.
 - Resurface all trench within paved area to meet L.A. County Road Dept. or California State Highway Dept. requirements in accordance with permit.
 - Encase four feet of sewer at points of interference with poles, S-a-119.
 - House laterals to be constructed with inverts at property line \dots \dots feet below curb grade except as noted.
 - All structures shall be brick sewer structures, S-a-104.
 - For allowable leakage test, use Formula No. 1, \dots Spec's, Sec. 51.

PROFILE, ALIGNMENT AND GRADE OF
SANITARY SEWERS
TO BE CONSTRUCTED IN
TRACT No 20807

P.C. 3270
PAGE 1

20,244

PRIVATE CONTRACT NO. 3270
W. S. 38
TWO SHEETS
Scale: VERT. 1"=4'
HORIZ. 1"=40' JANUARY 1954

PREPARED UNDER THE
SUPERVISION OF
Henry Jones
Reg. C. E. No. 4484
FOR LEGEND SEE PLAN NO. S-a-64

NOTE:

Grades to which this improvement is to be constructed are shown on plans and profiles. Grade points for top of curbs, center line of streets, or center line of alleys are shown by circles on profiles. At all points between designated points the grade shall be established so as to conform to a straight line drawn between said designated points.

Elevations are in feet above U.S.C.S. datum or mean sea level.

This drawing and the data hereon are hereby made a part of the specifications.

Work shall be prosecuted according to the specifications on file in the office of the County Engineer and shall be prosecuted only in the presence of the County Engineer.

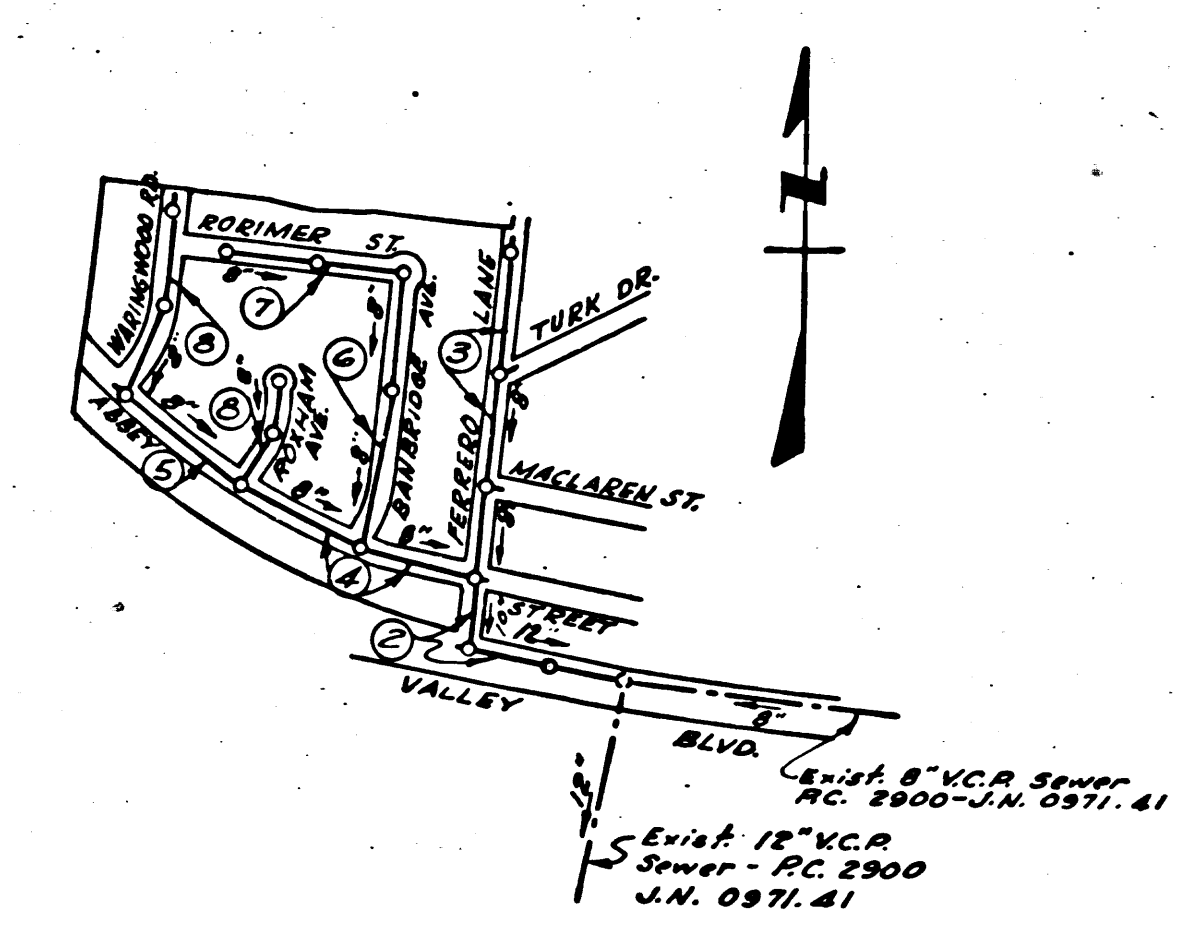
Before work can be started, the contractor must obtain a permit to excavate in County Streets from the L.A. County Road Dept., 108 W. 2nd St. and make a deposit with the County Engineer, 733 L.A. County Engineering Building, sufficient to cover the cost of construction inspection and record plans.

Approval of this plan by the County of Los Angeles does not constitute a representation as to the accuracy of the location of or the existence or non-existence of any underground utility, pipe, or structure within the limits of this project. This note applies to all sheets.

If work is to be done in a State Highway, a permit must be obtained from the State of California, Division of Highways, 120 South Spring Street.

COUNTY OF LOS ANGELES, CALIFORNIA

Approved, William J. Fox, County Engineer
Approved, A. M. Rawm
CHIEF ENGR. CO. SAN. DIST. NO. 21
By *A. P. Collins* Sanitation Engineer
By *S. Bachmann* Office Engineer
Checked by *R. K. ...* 2-18-55
Office of County Engineer, Reg. C. E. No. 7860



SHEET NO.	PAGES
1	1-5
2	6-8

CONNECTION CHARGES AS INDICATED
J. ... 2-18-55

INDEX MAP
SCALE: 1"=800'
TRACT No 20807
P.C. 3270

Checked 4-29-55 *McAreen*

Trim Line

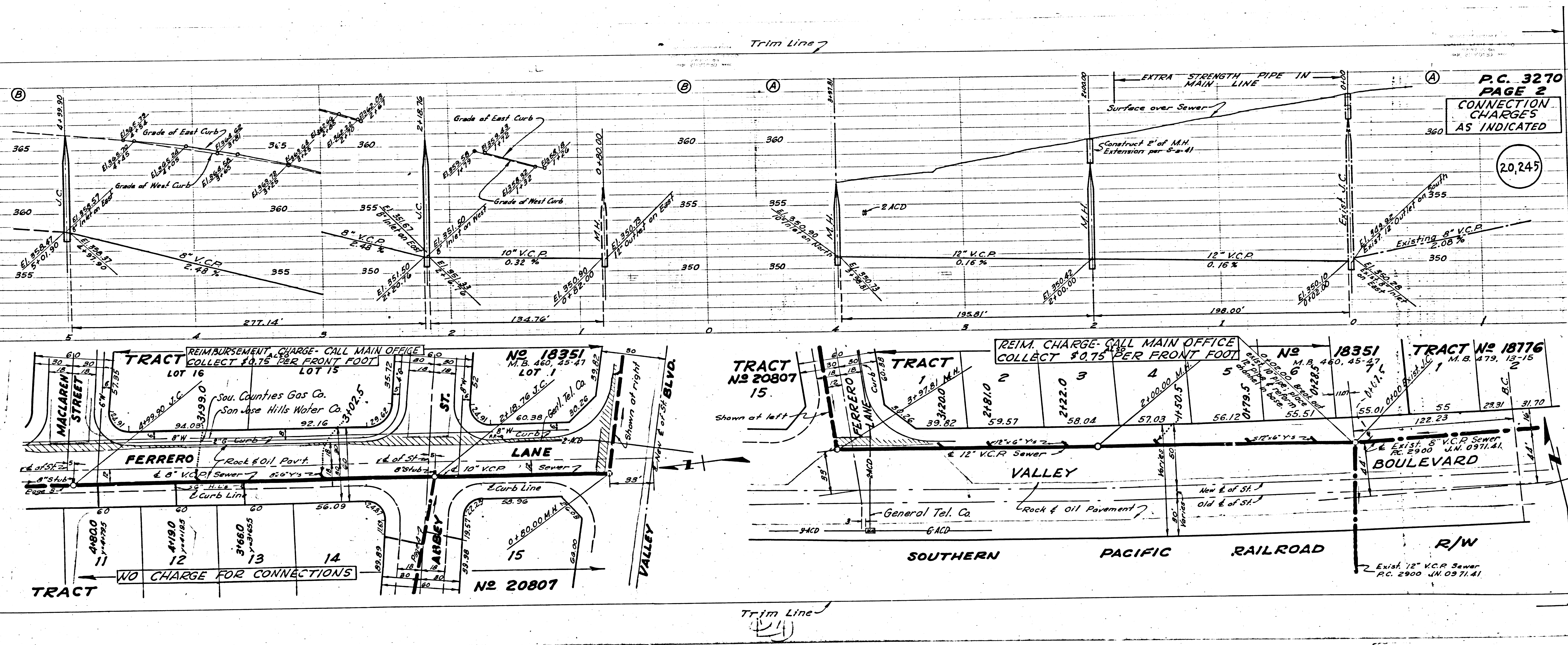
P.C. 3270
TRACT No 20807
1056-84-183-3
1056-84-183-3
1056-84-183-3

P.C. 3270
PAGE 3
CONNECTION CHARGES
AS INDICATED

20,246

P.C. 18351
M.B. 440, 45-47
7-16

20807



P.C. 3270
PAGE 2
CONNECTION CHARGES
AS INDICATED

20,245

REIM. CHARGE - CALL MAIN OFFICE
COLLECT \$0.75 PER FRONT FOOT

NO CHARGE FOR CONNECTIONS

Exist 12" V.C.P. Sewer
P.C. 2900 J.M. 0371.41

P.C. 3270
PAGE 5

NO CHARGE
FOR CONNECTIONS

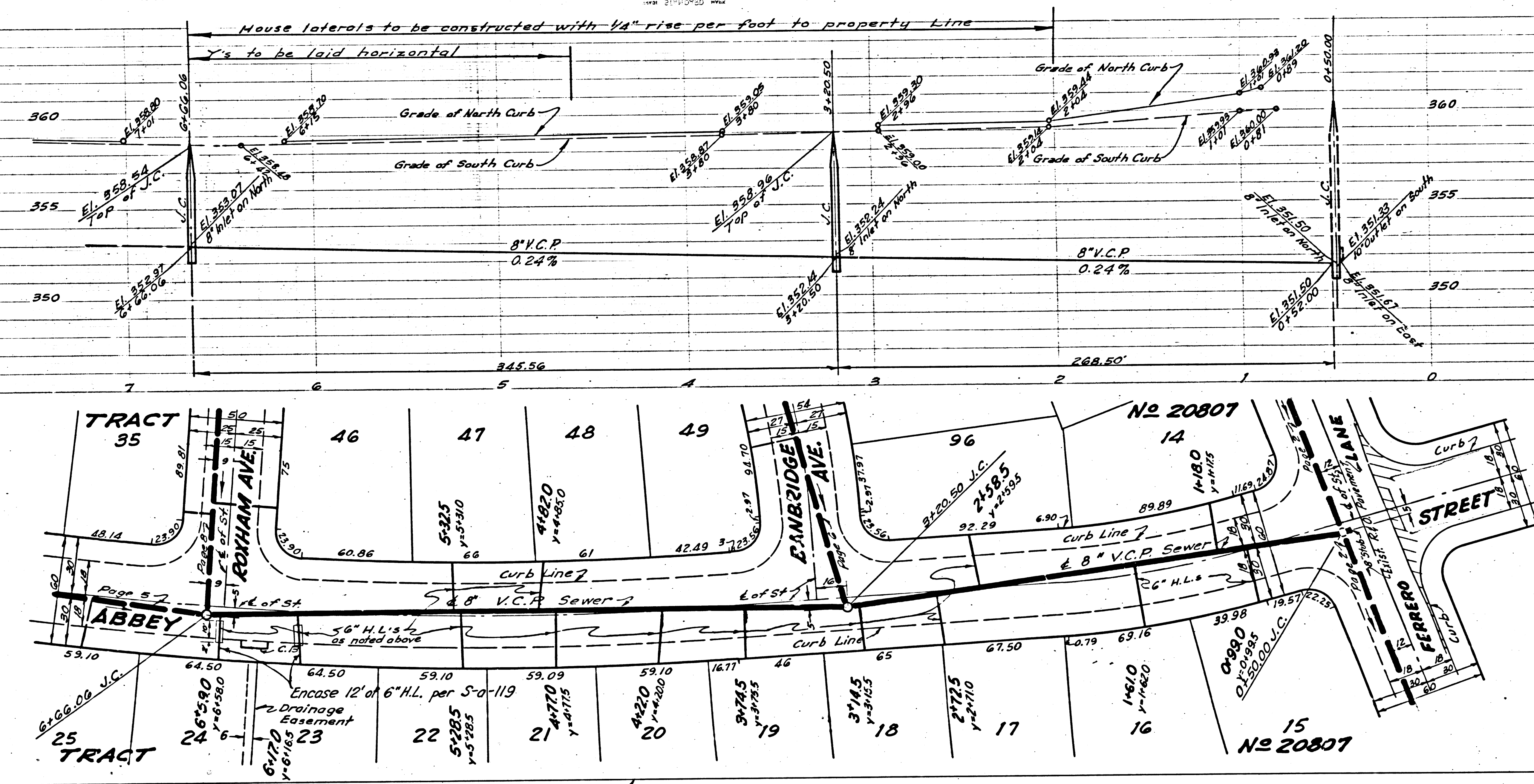
20,248

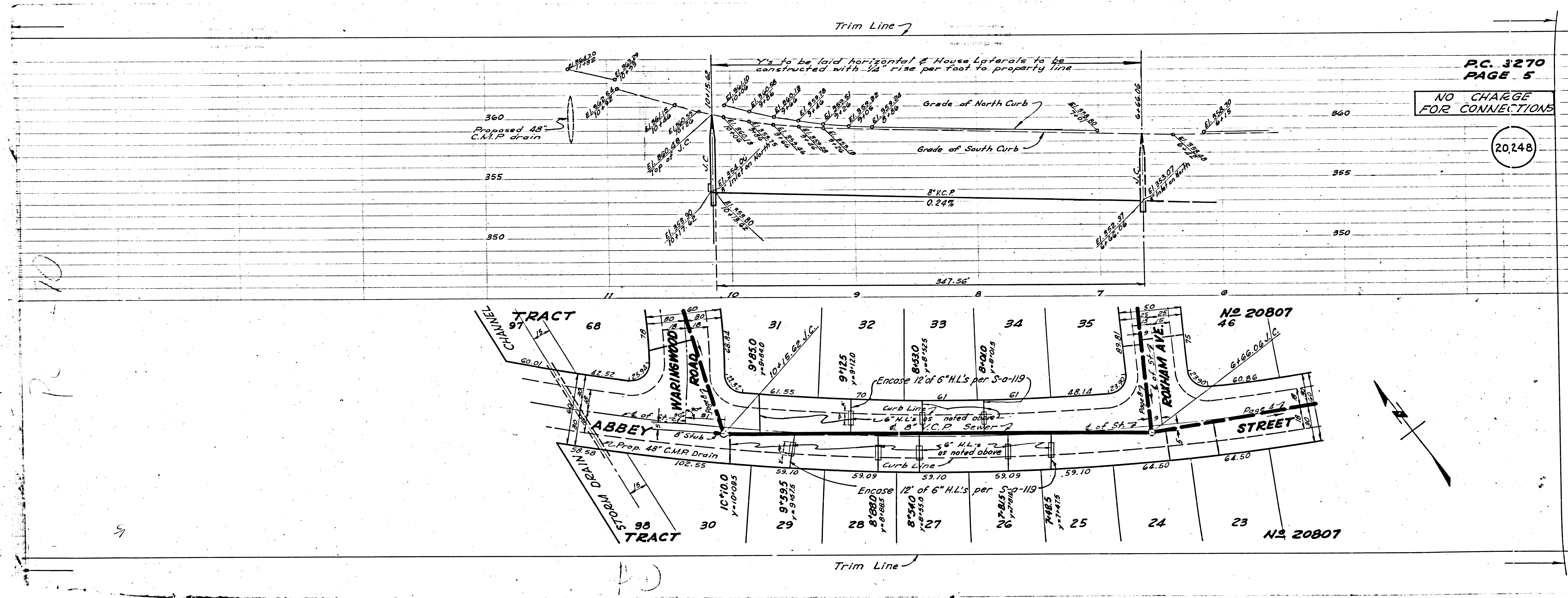
Trim Line 7

P.C. 3270
PAGE 4

NO CHARGE FOR
CONNECTIONS

20,247





P.C. 3270
 PAGE 5
 NO CHARGE
 FOR CONNECTIONS

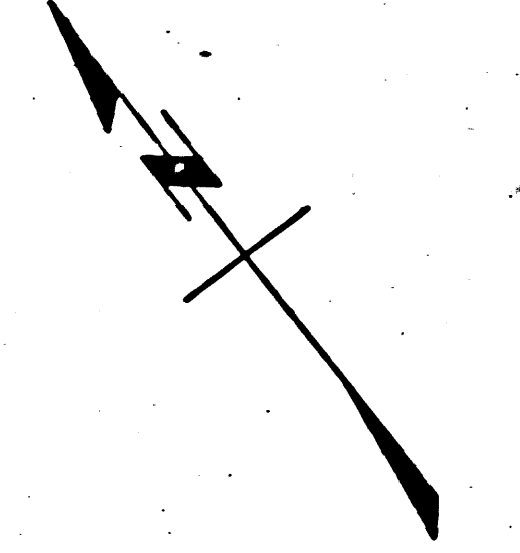
20248

10

PC

5

10



PC. 3270
PAGE 6
NO CHARGE
FOR CONNECTIONS

20,251

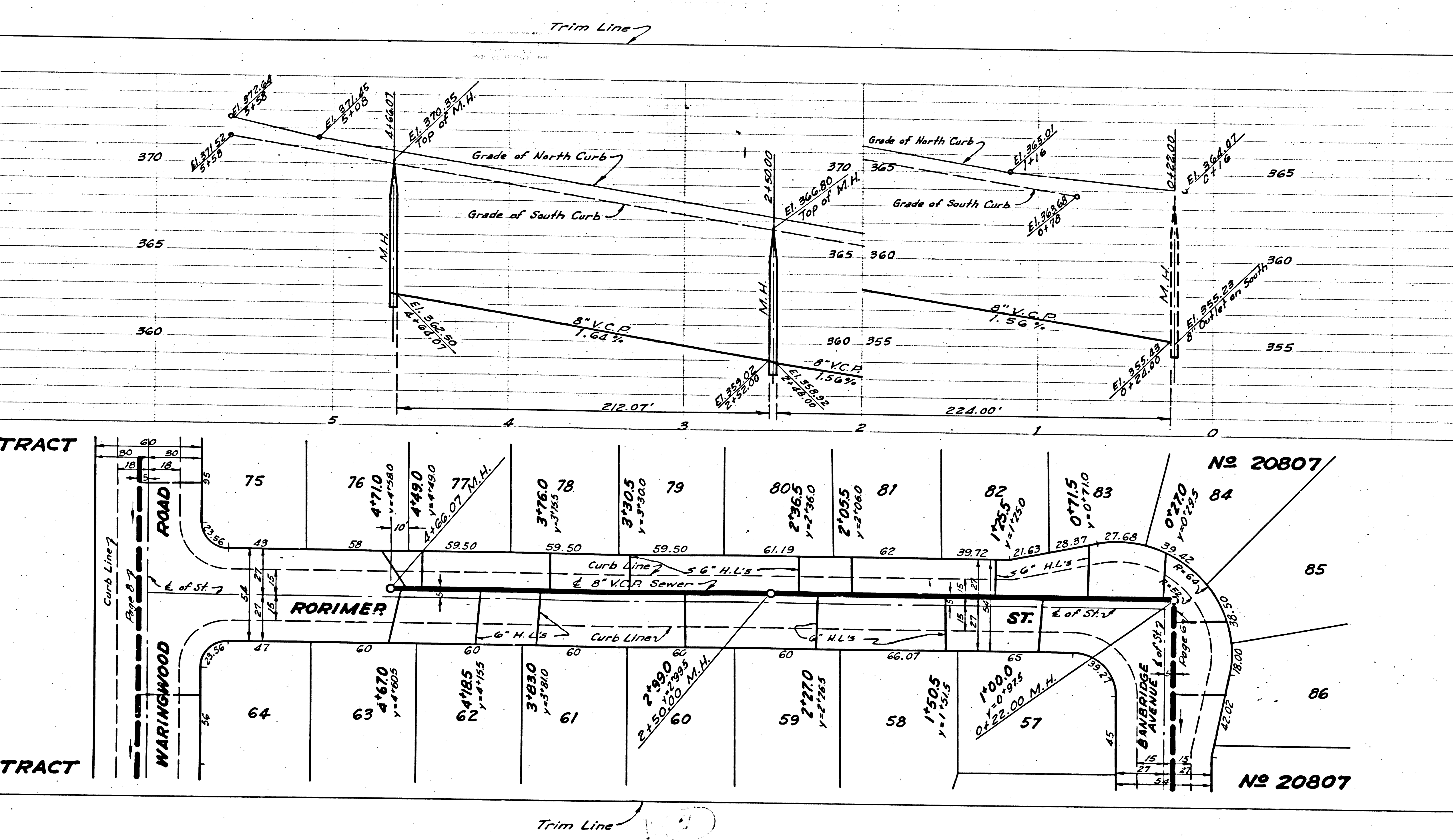
PC. 3270
PAGE 7

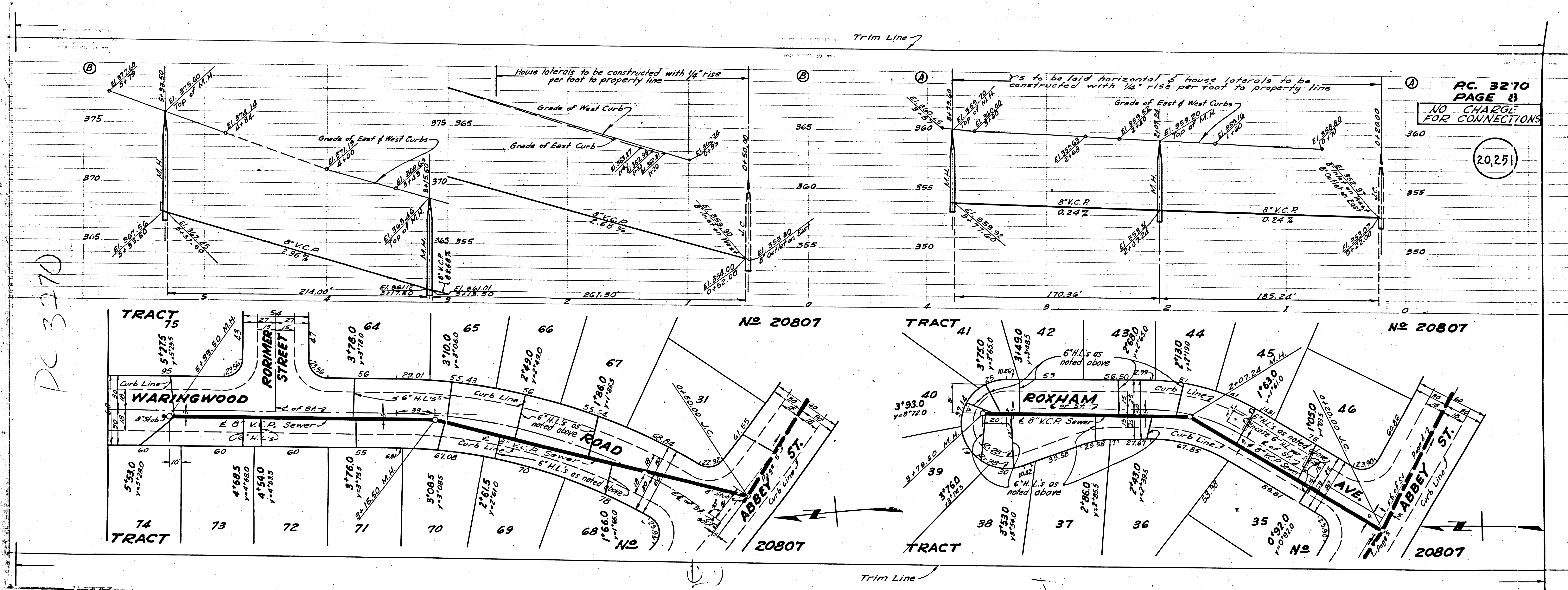
NO CHARGE
FOR CONNECTIONS

20,250

0807

0807





RC. 3270
PAGE 3
NO CHARGE
FOR CONNECTIONS

20,251

PC 3270

Trim Line

Trim Line

No 20807

No 20807

No 20807

No 20807

TRACT 75

TRACT 41

WARINGWOOD

ROXHAM

TRACT 74

TRACT

TRACT

ROBBER STREET

ROXHAM AVE.

ABBAY ST.

ABBAY ST.

