

**BENCH MARK:**

B.M. Elev. + 437.43 (437.62 per San. Dist.)  
 L & T Set in Conc. Hd. Wall of Culvert, S/E Cor. of  
 BEN LOMOND AVE. & BASE LINE RD.

**SAN DIMAS BLDG. DIST. NO. 10**

**NOTE:**

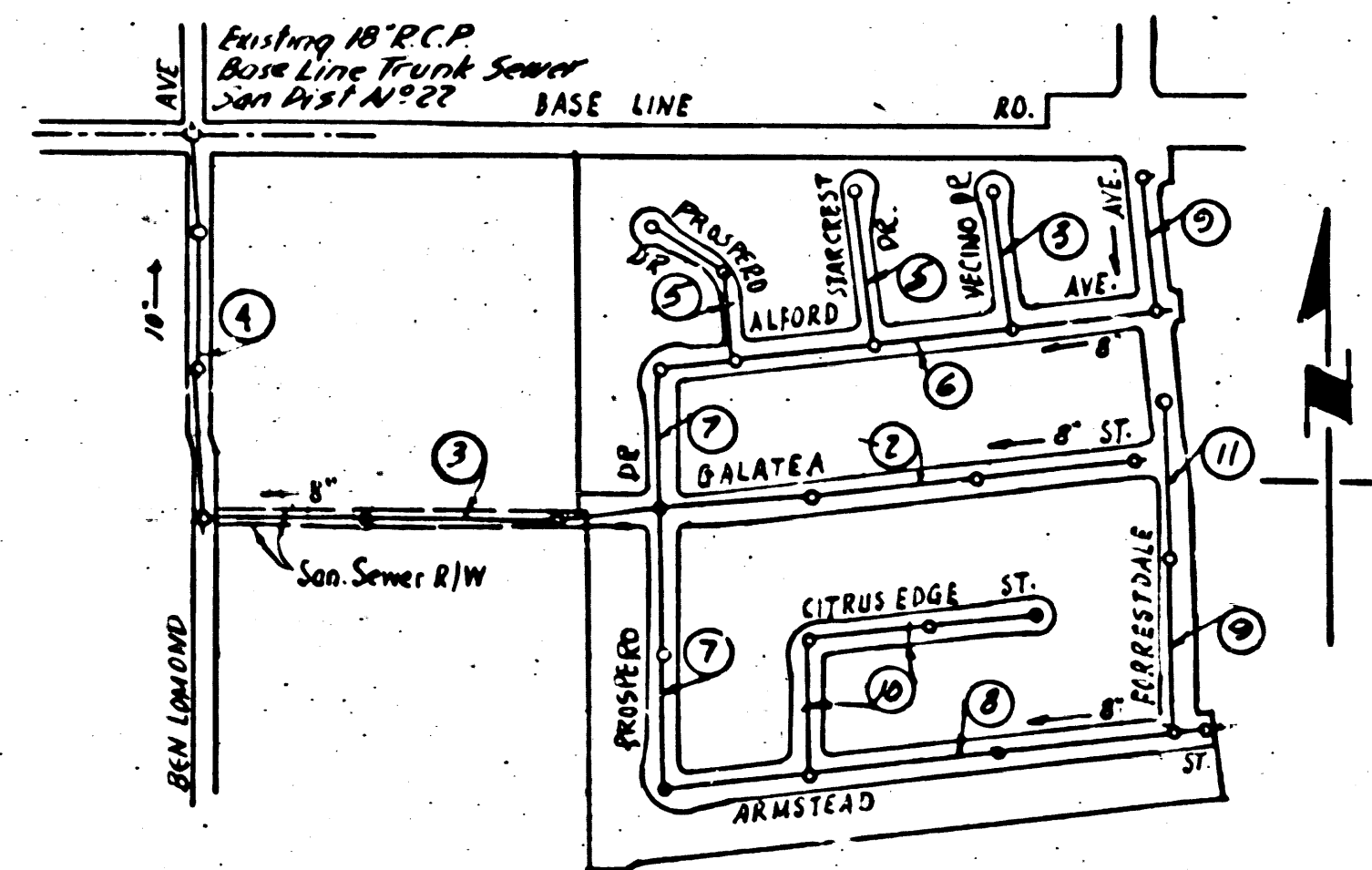
- Provide stakes on the property lines or property lines produced at right angles to the sewer line at the center line of each manhole.
- No representative of the County Engineer will survey or layout any portion of the work.
- The owner or his authorized representative shall furnish the County Engineer with grade sheets and stations for all house laterals and Y branches and shall provide stakes for them at their proper locations with stationing plainly marked. Any change in location shall be requested in writing by the owner or his representative.
- No revisions shall be made in these plans without the approval of the County Engineer.
1. Use standard manhole frames and covers, S-a-117.
  2. Use standard strength pipe except as noted.
  3. Use cement mortar for all vitrified clay pipe joints.
  4. Resurface all trench within paved area to meet L.A. County Road Dept. or California State Highway Dept. requirements in accordance with permit.
  5. Encase four feet of sewer at points of interference with poles, S-a-119.
  6. House laterals to be constructed with inverts at property line 6 feet below curb grade except as noted.
  7. All structures shall be brick sewer structures, S-a-104.
  8. For allowable leakage test, use Formula No. 7, Spec's., Sec. 51.
  9. Manhole tops in unimproved Rights-Of-Way to be 6" above finish grade.

Before breaking into any existing structure and before final acceptance of this work, County Sanitation District should be notified in order that required inspection may be made.

SHEET	PAGE
1	1-5
2	6-10
3	11

**COLLECT CHARGES AS INDICATED**

*checked 2-24-55 W. J. Fox*



REVISION: Page 11 Added  
 APPROVED: *P. E. Kuhn* 1-5-55  
 Office of County Engineer  
 Reg. C.E. No. 7860

*Trim Line 1*

PROFILE, ALIGNMENT AND GRADE OF  
**SANITARY SEWERS**  
 TO BE CONSTRUCTED IN

**TRACT NO. 20618**

PRIVATE CONTRACT NO. 3272  
 W. S. 47  
**3 SHEETS**

Scale: VERT. 1"=4'  
 HORIZ. 1"=40'

NOV. 1954  
 PREPARED IN THE OFFICES OF

**GORDON J. JENNINGS CO.**  
*G. J. Jennings* Reg. C.E. No. 7858  
 FOR LEGEND SEE PLAN NO. S-a-64

**NOTE:**

Grades to which this improvement is to be constructed are shown on plans and profiles. Grade points for top of curbs, center line of streets, or center line of alleys are shown by circles on profiles. At all points between designated points the grade shall be established so as to conform to a straight line drawn between said designated points.

Elevations are in feet above U.S.G.S. datum or mean sea level.

This drawing and the data hereon are hereby made a part of the specifications.

Work shall be constructed according to specifications on file in the office of the County Engineer and shall be prosecuted only in the presence of the County Engineer.

Before work can be started, the contractor must obtain a permit to excavate in County streets from the L.A. County Road Dept., 108 W. 2nd St. and make a deposit with the County Engineer, 733 L.A. County Engineering Building, sufficient to cover the cost of construction inspection and record plans.

Approval of this plan by the County of Los Angeles does not constitute a representation as to the accuracy of the location of or the existence or non-existence of any underground utility, pipe, or structure within the limits of this project. This note applies to all sheets.

If work is to be done on a State Highway, a permit must be obtained from the State of California, Division of Highways, 120 South Spring Street.

**COUNTY OF LOS ANGELES, CALIFORNIA**

Approved, William J. Fox, County Engineer  
 Approved, A. M. Rawn  
 CHIEF ENGR. CO. SAN. DIST. NO. 10  
*A. M. Rawn*  
 Office Engineer  
 Checked by *P. E. Kuhn* 11-18-54  
 Office of County Engineer, Reg. C. E. No. 7860

**P.C. 3272**  
**PAGE 1**

19783

(11)

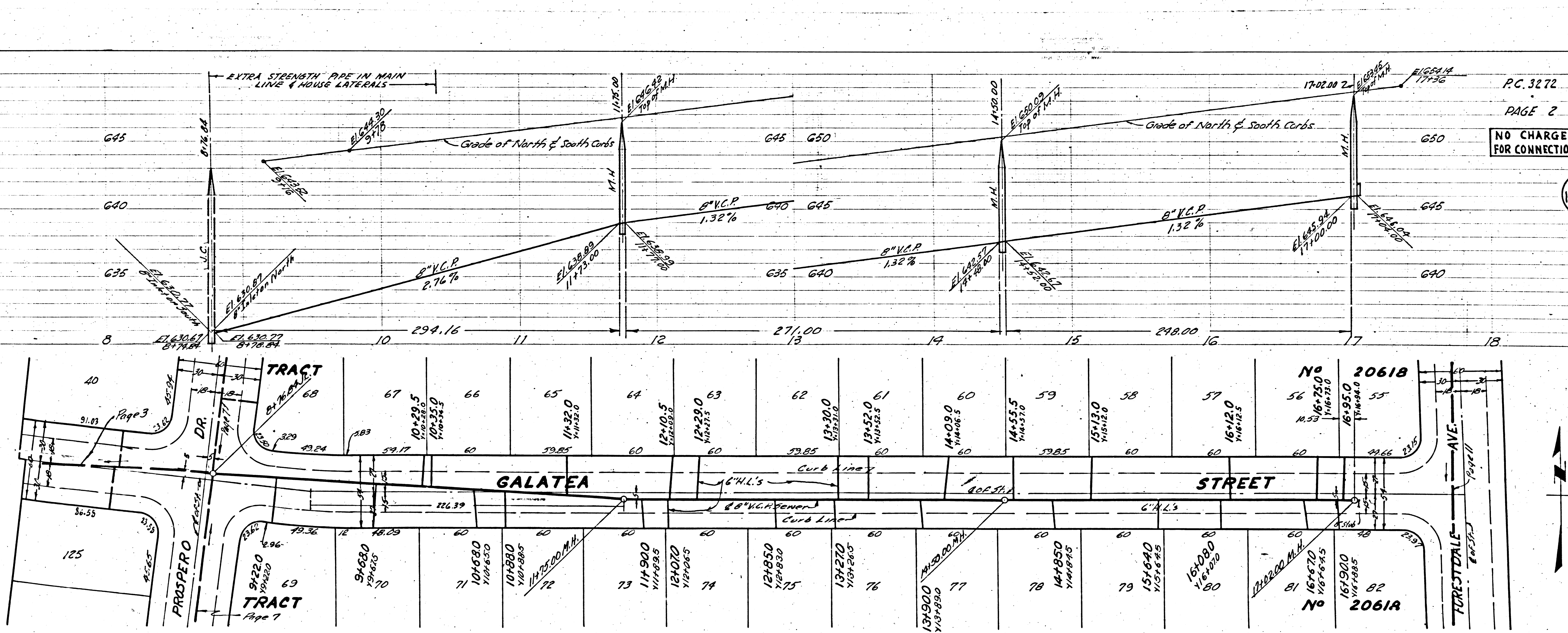
TRACT 20618

TRACT 20618

P.C. 3272-  
 STS 3509

7.77

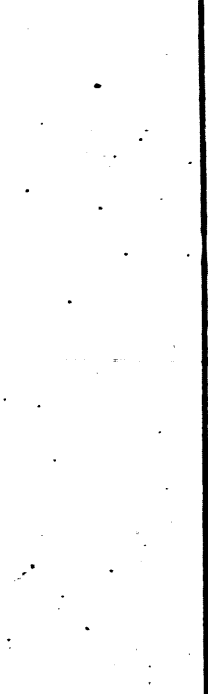
*Trim Line 1*



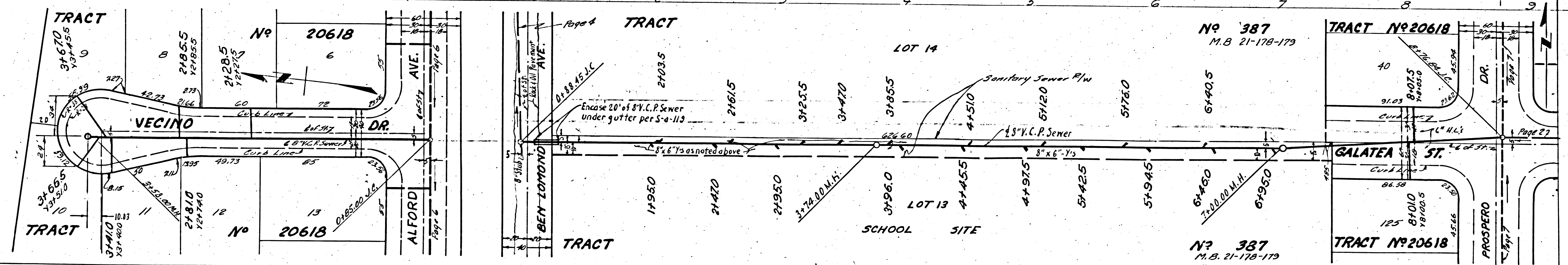
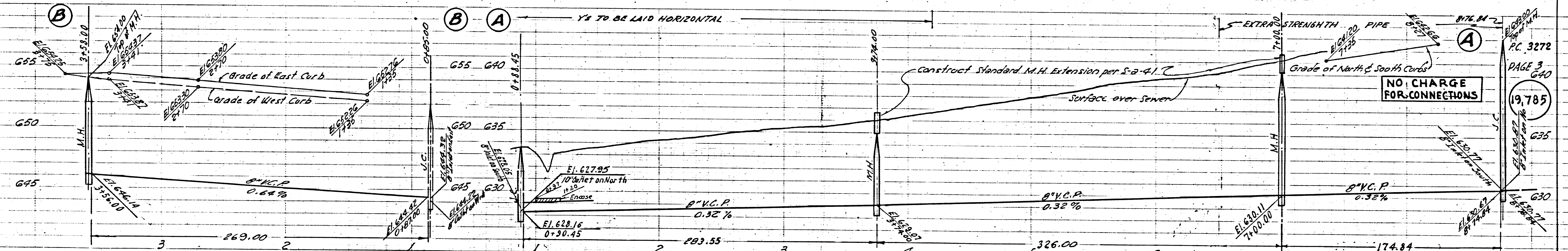
P.C. 3272  
PAGE 2

NO CHARGE  
FOR CONNECTIONS

19,784



786



P.C. 3272

PAGE 3

19,785

G40

G35

G30

G25

G20

G15

G10

G5

G0

G-5

G-10

G-15

G-20

G-25

G-30

G-35

G-40

G-45

G-50

G-55

G-60

G-65

G-70

G-75

G-80

G-85

G-90

G-95

G-100

G-105

G-110

G-115

G-120

G-125

G-130

G-135

G-140

G-145

G-150

G-155

G-160

G-165

G-170

G-175

G-180

G-185

G-190

G-195

G-200

G-205

G-210

G-215

G-220

G-225

G-230

G-235

G-240

G-245

G-250

G-255

G-260

G-265

G-270

G-275

G-280

G-285

G-290

G-295

G-300

G-305

G-310

G-315

G-320

G-325

G-330

G-335

G-340

G-345

G-350

G-355

G-360

G-365

G-370

G-375

G-380

G-385

G-390

G-395

G-400

G-405

G-410

G-415

G-420

G-425

G-430

G-435

G-440

G-445

G-450

G-455

G-460

G-465

G-470

G-475

G-480

G-485

G-490

G-495

G-500

G-505

G-510

G-515

G-520

G-525

G-530

G-535

G-540

G-545

G-550

G-555

G-560

G-565

G-570

G-575

G-580

G-585

G-590

G-595

G-600

G-605

G-610

G-615

G-620

G-625

G-630

G-635

G-640

G-645

G-650

G-655

G-660

G-665

G-670

G-675

G-680

G-685

G-690

G-695

G-700

G-705

G-710

G-715

G-720

G-725

G-730

G-735

G-740

G-745

G-750

G-755

G-760

G-765

G-770

G-775

G-780

G-785

G-790

G-795

G-800

G-805

G-810

G-815

G-820

G-825

G-830

G-835

G-840

G-845

G-850

G-855

G-860

G-865

G-870

G-875

G-880

G-885

G-890

G-895

G-900

G-905

G-910

G-915

G-920

G-925

G-930

G-935

G-940

G-945

G-950

G-955

G-960

G-965

G-970

G-975

G-980

G-985

G-990

G-995

G-1000

G-1005

G-1010

G-1015

G-1020

G-1025

G-1030

G-1035

G-1040

G-1045

G-1050

G-1055

G-1060

G-1065

G-1070

G-1075

G-1080

G-1085

G-1090

G-1095

G-1100

G-1105

G-1110

G-1115

G-1120

G-1125

G-1130

G-1135

G-1140

G-1145

G-1150

G-1155

G-1160

G-1165

G-1170

G-1175

G-1180

G-1185

G-1190

G-1195

G-1200

G-1205

G-1210

G-1215

G-1220

G-1225

G-1230

G-1235

G-1240

G-1245

G-1250

G-1255

G-1260

G-1265

G-1270

G-1275

G-1280

G-1285

G-1290

G-1295

G-1300

G-1305

G-1310

G-1315

G-1320

G-1325

G-1330

G-1335

G-1340

G-1345

G-1350

G-1355

G-1360

G-1365

G-1370

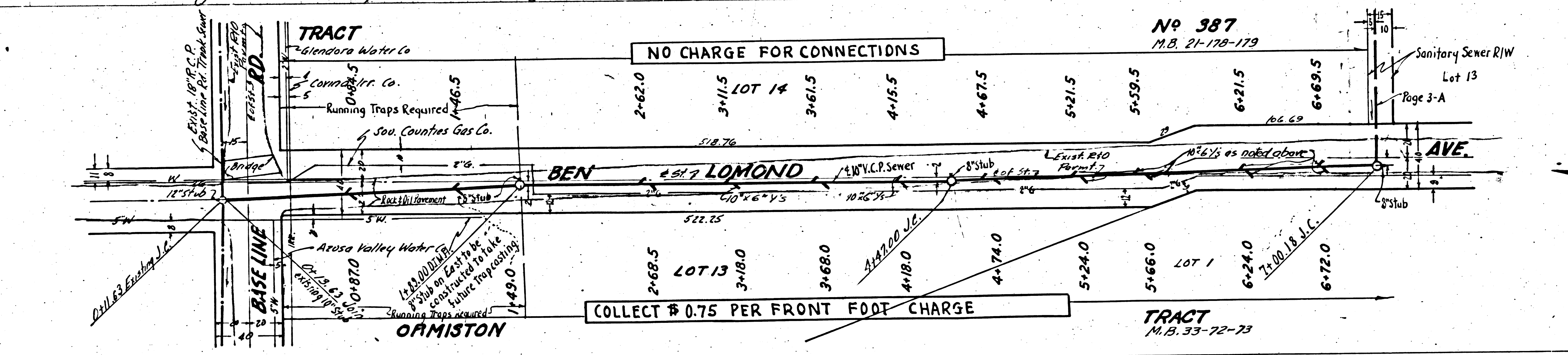
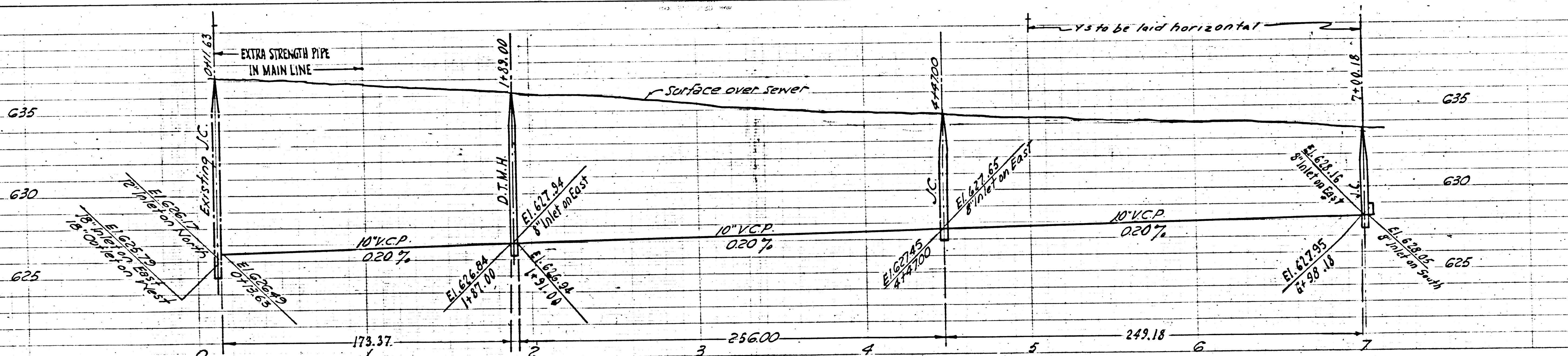
G-1375

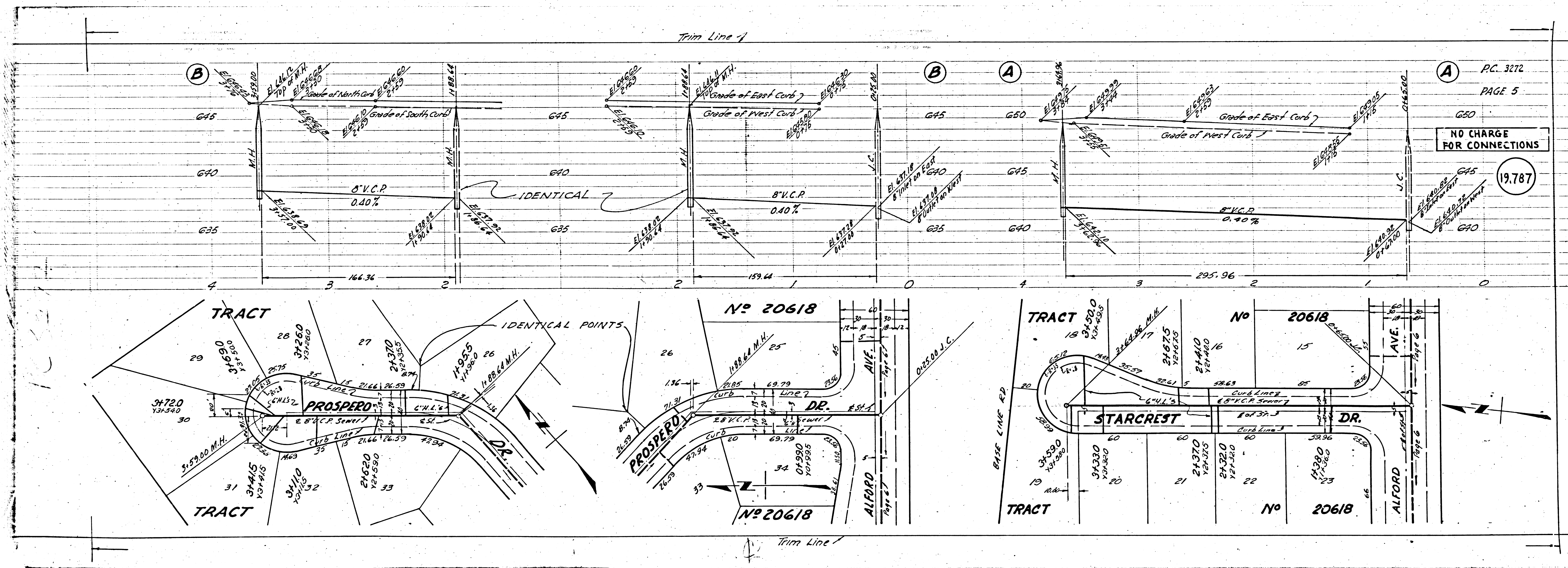
G-1380

G-1385

A P.C. 3272  
 PAGE 5  
 G50  
 NO CHARGE FOR CONNECTIONS  
 13.787

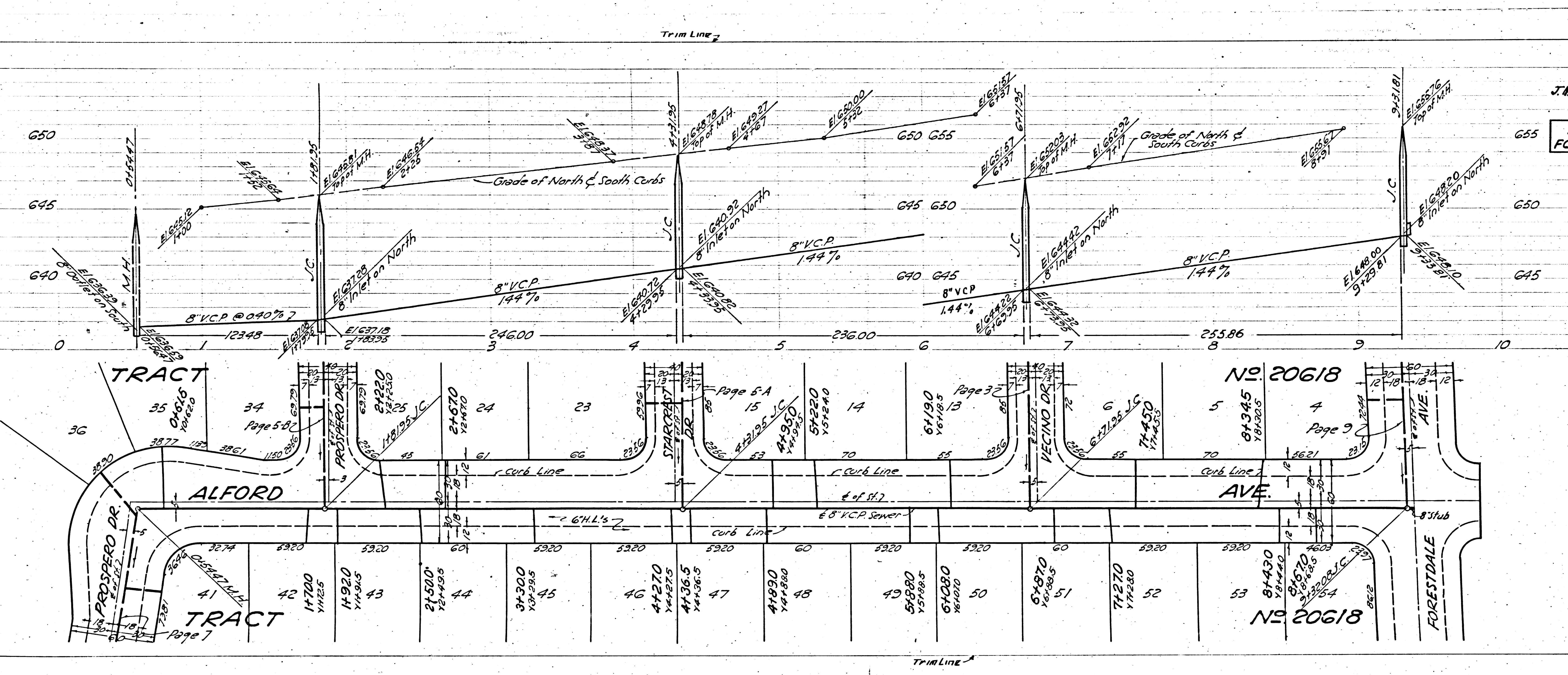
P.C. 3272  
 PAGE 4  
 COLLECT CHARGES AS INDICATED  
 19.786





FOR MS

9



PC 3272  
J#1100.02  
PAGE 6

NO CHARGE  
FOR CONNECTIONS

19,788

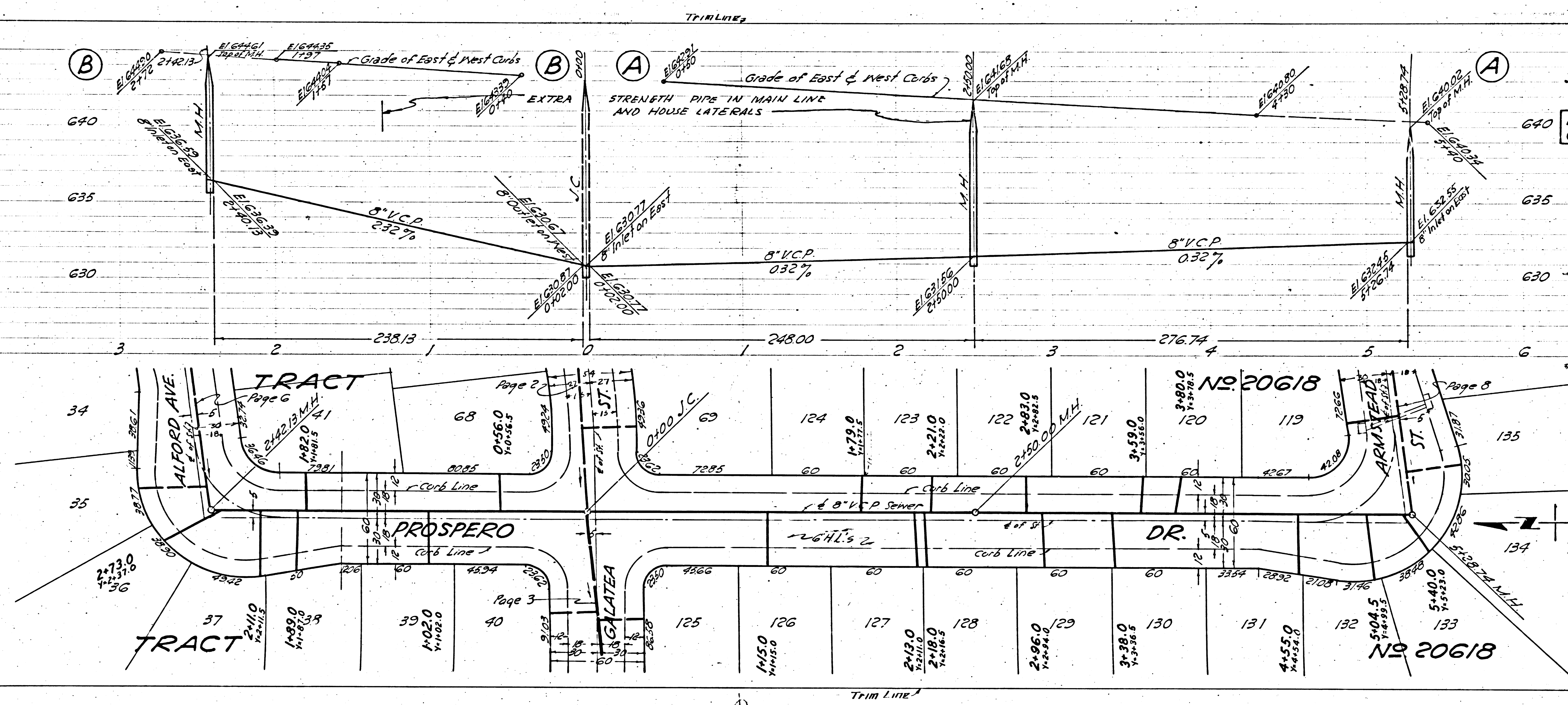
5558.09  
PC 3272

TRACT No 20618

272  
8

CHARGE FOR CONNECTIONS

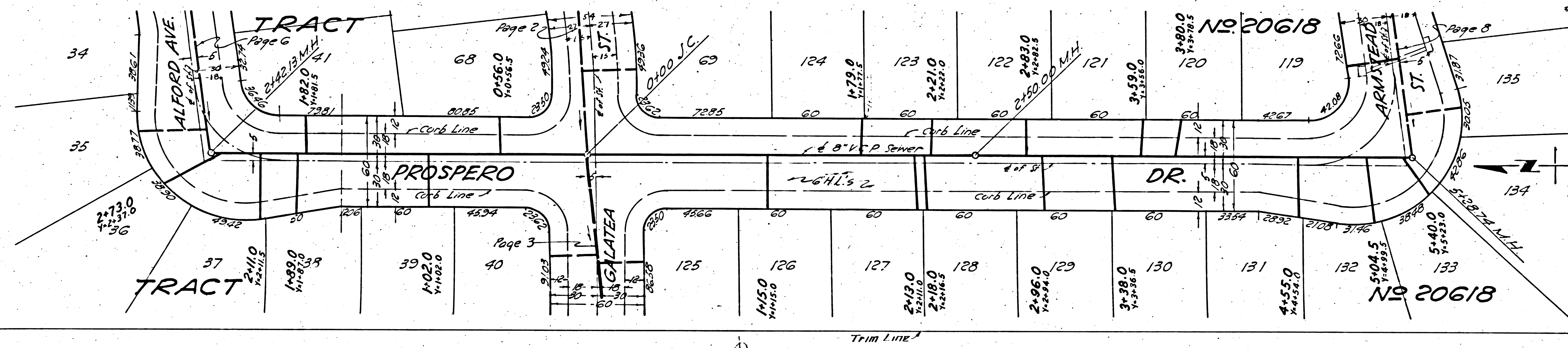
(19,790)



P.C. 3272  
J.N. 1100.02  
PAGE 7

NO CHARGE FOR CONNECTIONS

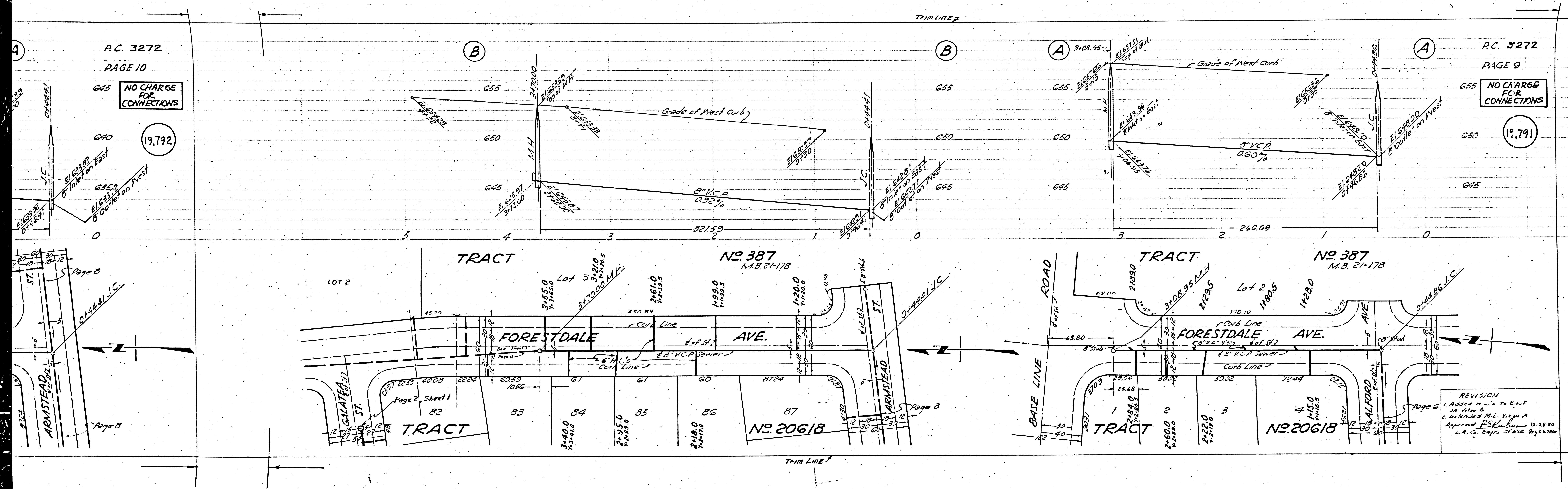
(19,789)

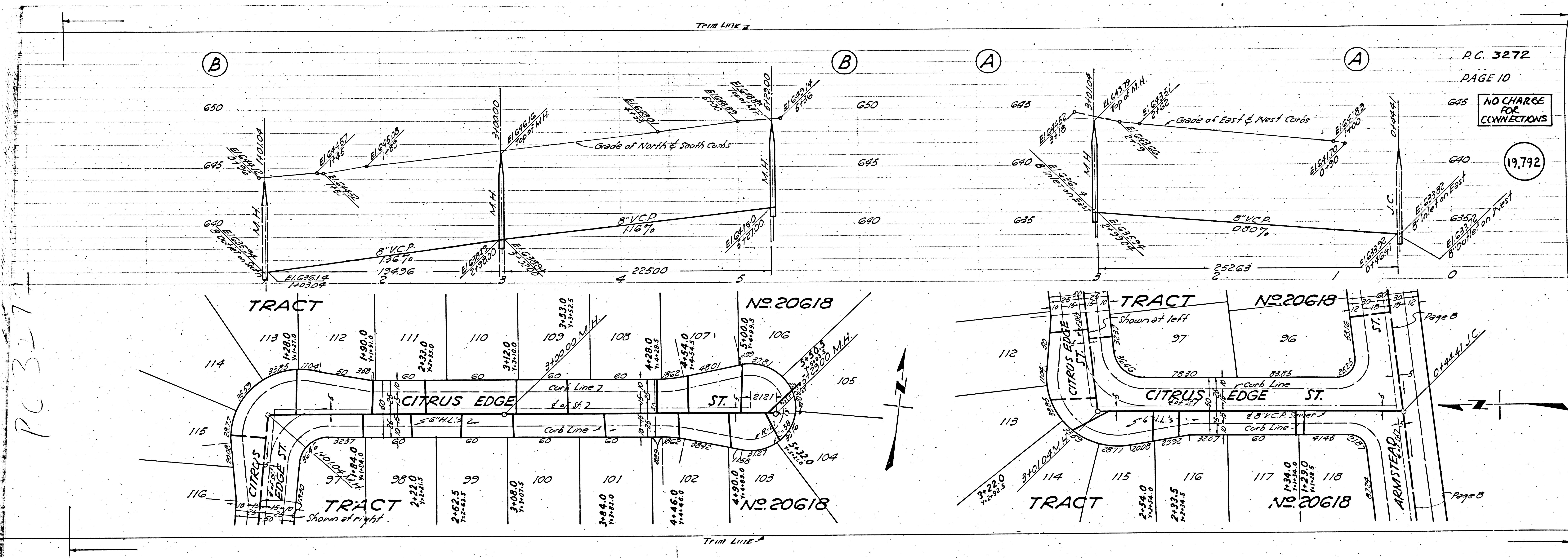


Trim Line









P.C. 3272  
PAGE 10

NO CHARGE FOR CONNECTIONS

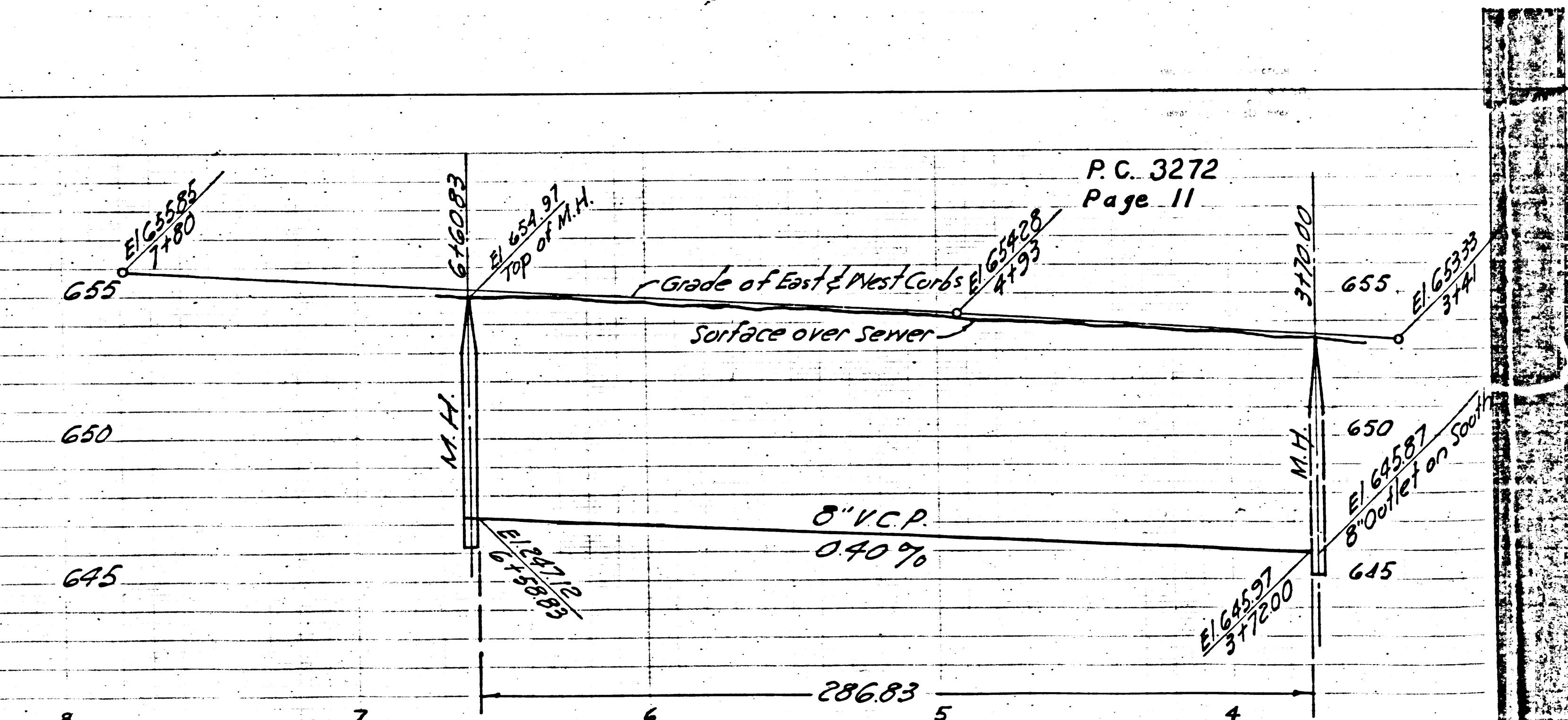
19,792

PC 3272

Page 8

Page 8

NO CHARGE FOR CONNECTION

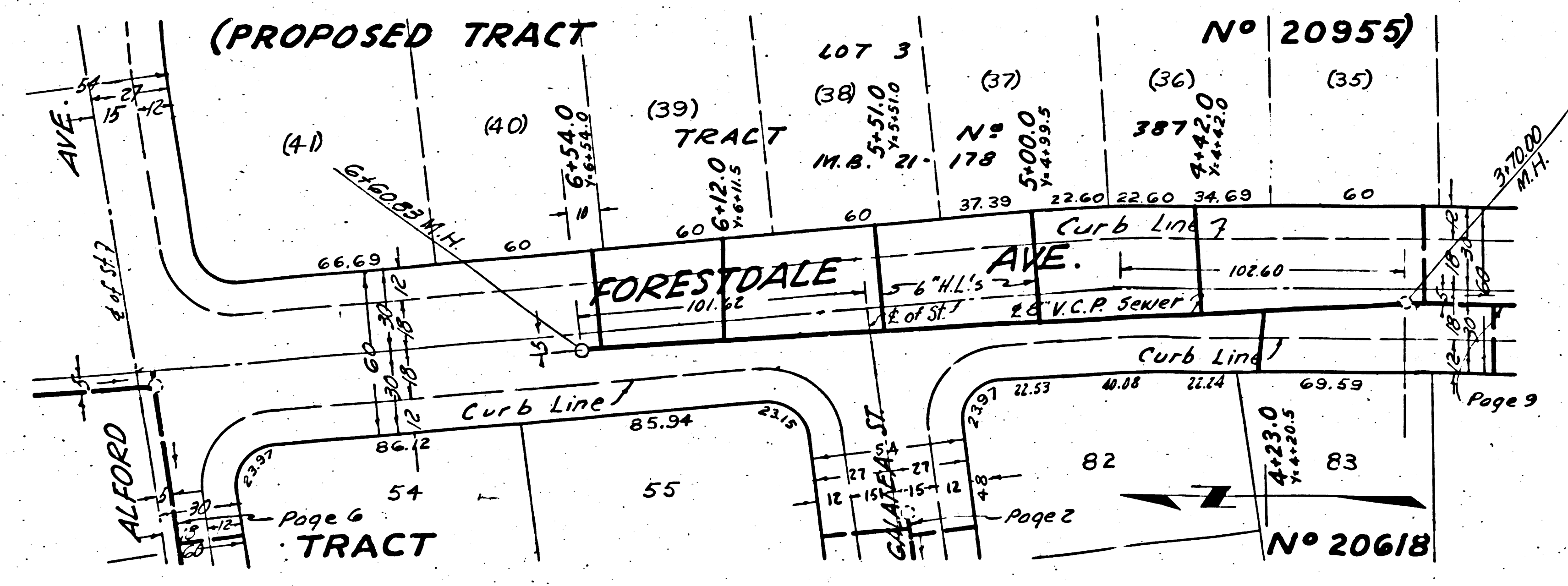


P.C. 3272  
Page 11

P.C. 3272  
PAGE 11

NO CHARGE FOR CONNECTIONS

19,793



3

TRACT 20618

P.C. 3272  
PAGE 11

Trim Line

Trim Line