

3274

GE 2
FET 1

21,415

21,415
Plat 2 0755
A 210
check
initial

SG 214 lead & tack in conc. wall 1/2" S. of E. of Cypress Ave. & 1/2" S. E. of E. of Irwindale Ave. elev. 956.251

Trim Line

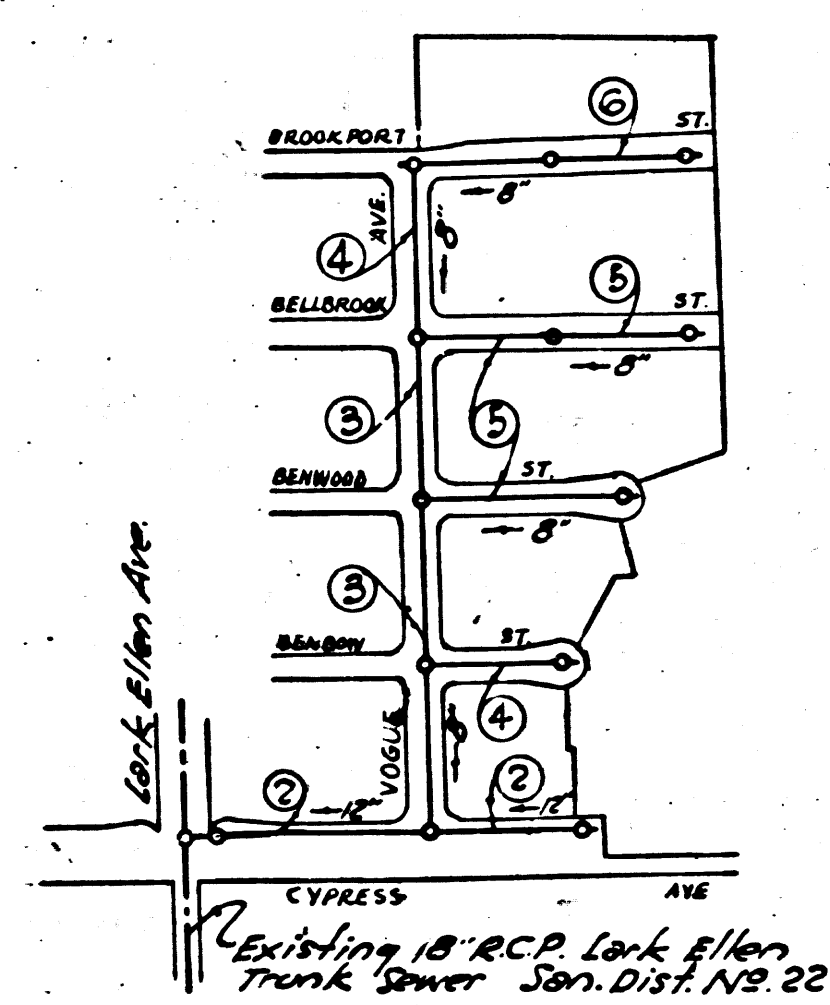
NOTE: SAN DIMAS BUILDING DISTRICT NO. 10

- Provide stakes on the property lines or property lines produced at right angles to the sewer line at the center line of each manhole.
- The owner or his authorized representative shall furnish the County Engineer with grade sheets and stations for all house laterals and Y branches and shall provide stakes for them at their proper locations with stationing plainly marked. Any change in location shall be requested in writing by the owner or his representative.
- No revisions shall be made in these plans without the approval of the County Engineer.
1. Use standard manhole frames and covers, S-a-117.
 2. Use standard strength pipe except as noted.
 3. Use cement mortar for all vitrified clay pipe joints.
 4. Resurface all trench within paved area to meet L.A. County Road Dept. or California State Highway Dept. requirements in accordance with permit.
 5. Encase four feet of sewer at points of interference with poles, S-a-119.
 6. House laterals to be constructed with inverts at property line 6 feet below curb grade.
 7. All structures shall be brick sewer structures, S-a-104, except as noted.
 8. For allowable leakage test, use Formula No. 1, Spec's., Sec. 51.
 9. Manhole tops in unimproved Rights-Of-Way to be 6" above finish grade.

Before breaking into any existing structure and before final acceptance of this work, County Sanitation District should be notified in order that required inspection may be made.

Numbers in circles indicate page numbers.

SHEET	PAGES
1	1-3
2	4-6



INDEX MAP TRACT NO. 20140 P.C. 3274 SCALE: 1"=400'

COLLECT CHARGES AS INDICATED
L. Curtis 5/11-55

PROFILE, ALIGNMENT AND GRADE OF
SANITARY SEWERS
TO BE CONSTRUCTED IN

TRACT NO. 20140

PRIVATE CONTRACT NO.
W. S. 47
2 SHEETS

Scale: VERT. 1"=4'
HORIZ. 1"=40'
NOV. 1954
PREPARED IN THE OFFICES OF
BARNETT, HOPEN & SMITH

Arnold R. Barnett
Reg. C.E. No. 12,116
FOR LEGEND SEE PLAN NO. S-a-64

NOTE:
Grades to which this improvement is to be constructed are shown on plans and profiles. Grade points for top of curbs, center line of streets, or center line of alleys are shown by circles on profiles. At all points between designated points the grade shall be established so as to conform to a straight line drawn between said designated points.
Elevations are in feet above U.S.G.S. datum or mean sea level.
This drawing and the data hereon are hereby made a part of the specifications.
Work shall be constructed according to specifications on file in the office of the County Engineer and shall be prosecuted only in the presence of the County Engineer.
Before work can be started, the contractor must obtain a permit to excavate in County streets from the L.A. County Road Dept., 108 W. 2nd St. and make a deposit with the County Engineer, Room 324, 253 S. Broadway L.A. sufficient to cover the cost of construction inspection and record plans.
Approval of this plan by the County of Los Angeles does not constitute a representation as to the accuracy of the location of or the existence or non-existence of any underground utility, pipe, or structure within the limits of this project. This note applies to all sheets.
If work is to be done in a State Highway, a permit must be obtained from the State of California, Division of Highways, 120 South Spring Street.

COUNTY OF LOS ANGELES, CALIFORNIA
Approved, William J. Fox, County Engineer
Approved, A. M. Rawm
CHIEF ENGR. CO. SAN. DIST. NO. 22
By *A. P. Collins* SANITATION ENGINEER
By *A. M. Rawm* Office Engineer
Checked by *R. Fisher* 5-12-55
Office of County Engineer, Reg. C. E. No. 7860

P.C. 3274
PAGE 1
SHEET 1

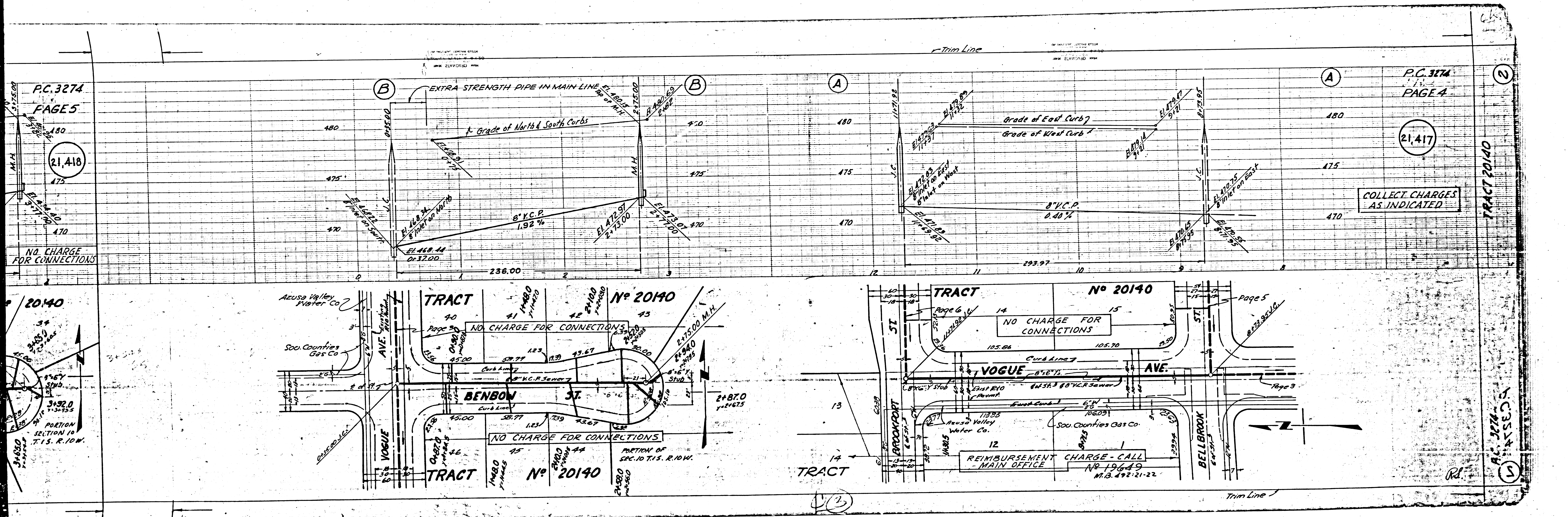
21,414

TRACT NO. 20140

P.C. 3274

Sealed 9-26-55 W. J. Fox

Trim Line



P.C. 3274
PAGE 5
21,418
NO. CHARGE FOR CONNECTIONS

P.C. 3274
PAGE 4
21,417
COLLECT CHARGES AS INDICATED

TRACT No 20140
NO CHARGE FOR CONNECTIONS
BENBOW ST.
NO CHARGE FOR CONNECTIONS
TRACT No 20140
PARTION OF SEC. 10 T. 15. R. 10W.

TRACT No 20140
NO CHARGE FOR CONNECTIONS
VOGUE AVE.
REIMBURSEMENT CHARGE - CALL MAIN OFFICE NO. 19649 M.B. 192-21-22
TRACT No 20140

TRACT 20140
P.C. 3274
PAGE 5

P.C. 3274
PAGE 3
SHEET 1
480

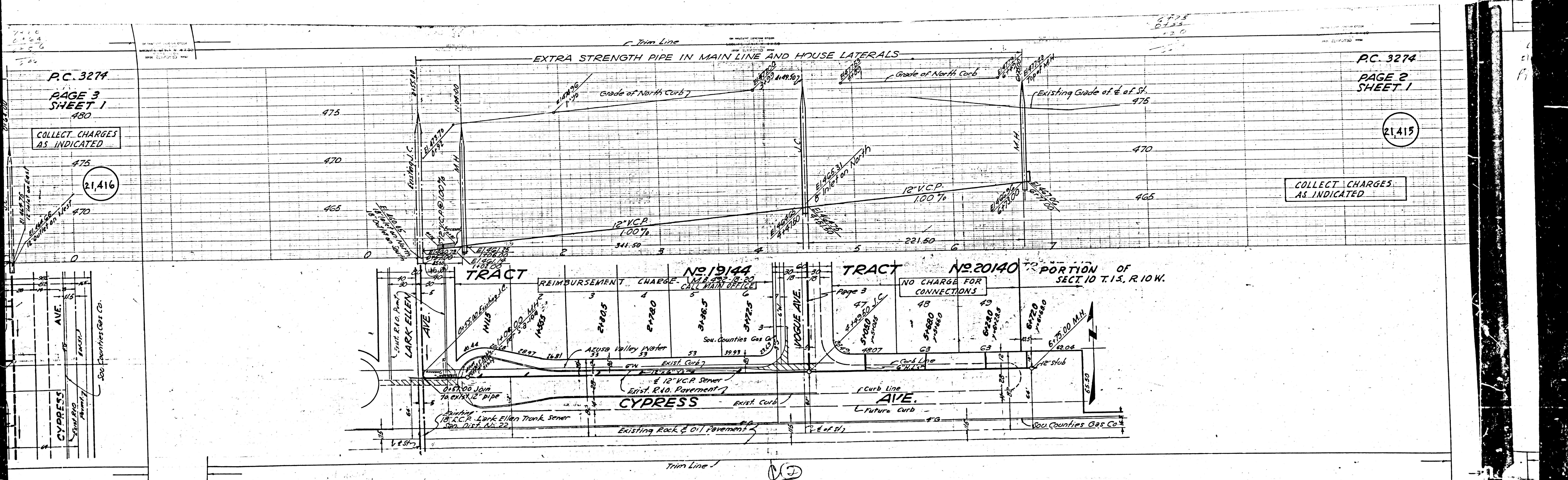
P.C. 3274
PAGE 2
SHEET 1

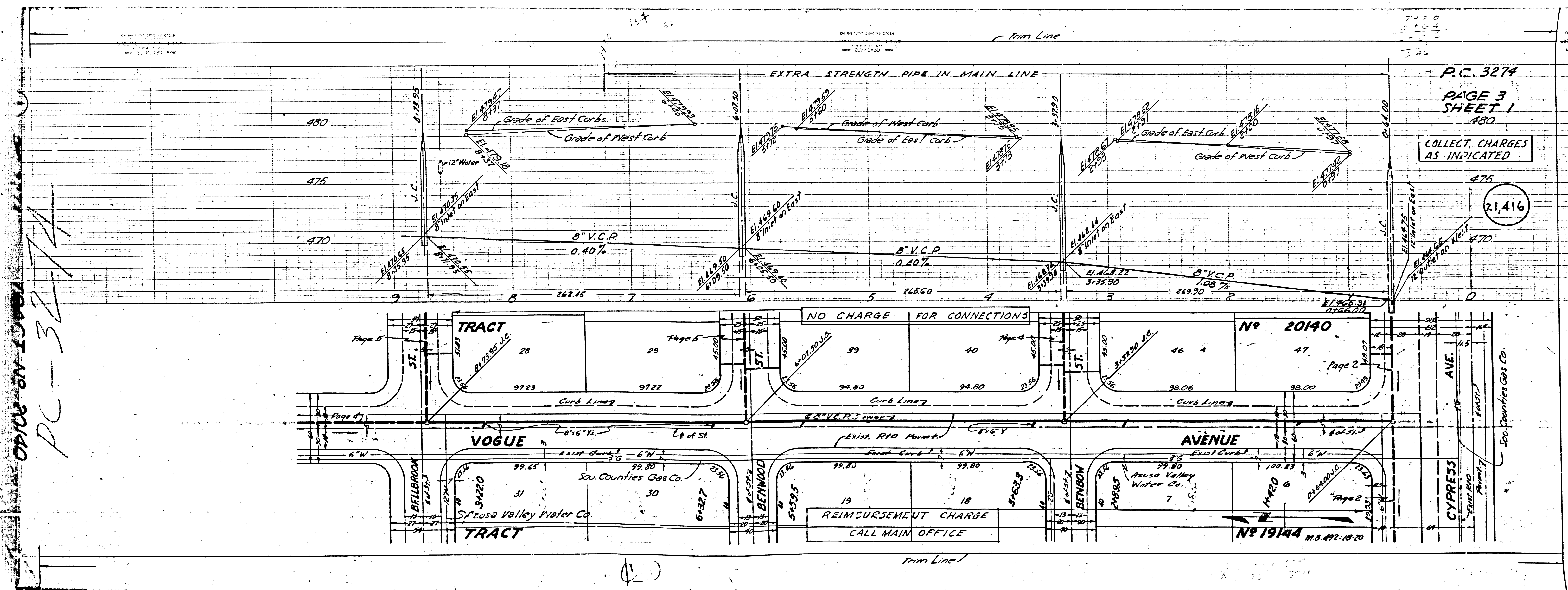
COLLECT CHARGES
AS INDICATED

COLLECT CHARGES
AS INDICATED

21,416

21,415





P.C. 3274
PAGE 3
SHEET 1
480

COLLECT CHARGES
AS INDICATED

21,416

NO CHARGE FOR CONNECTIONS

Nº 20140

REIMBURSEMENT CHARGE
CALL MAIN OFFICE

Nº 19144 M.B. 492-1820

PC-3274
 OFFICE IN 1001

VOGUE

AVENUE

TRACT

TRACT

AVE.
 CYPRESS

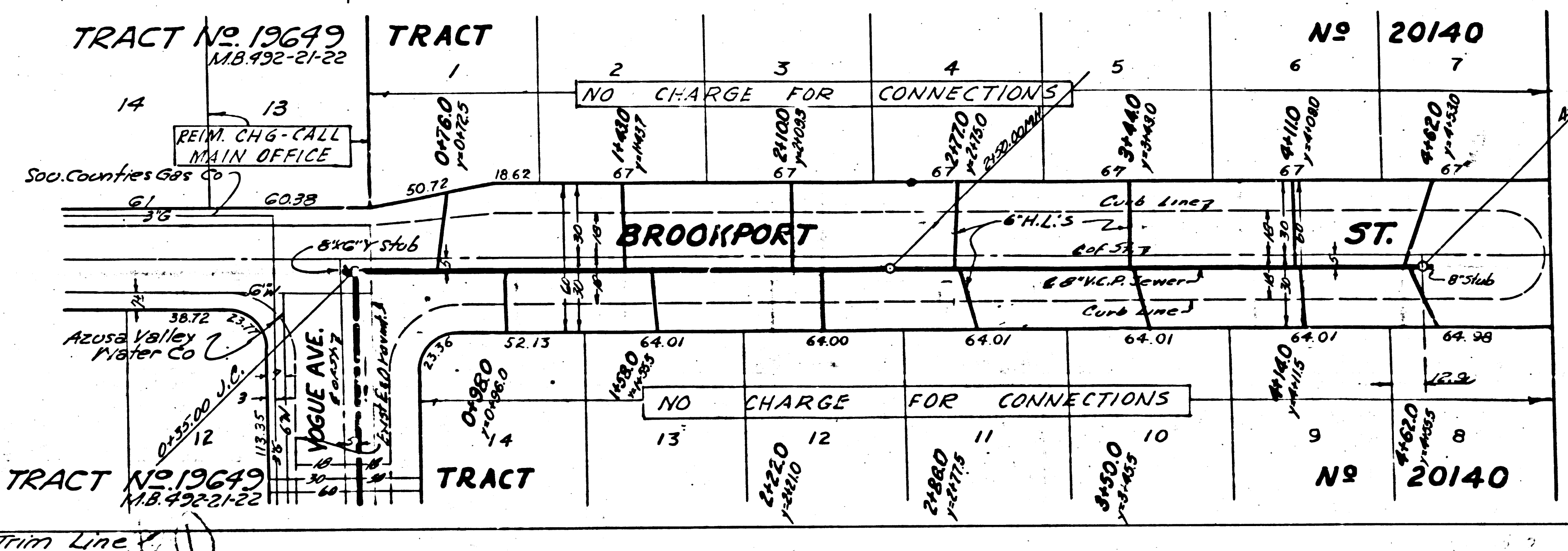
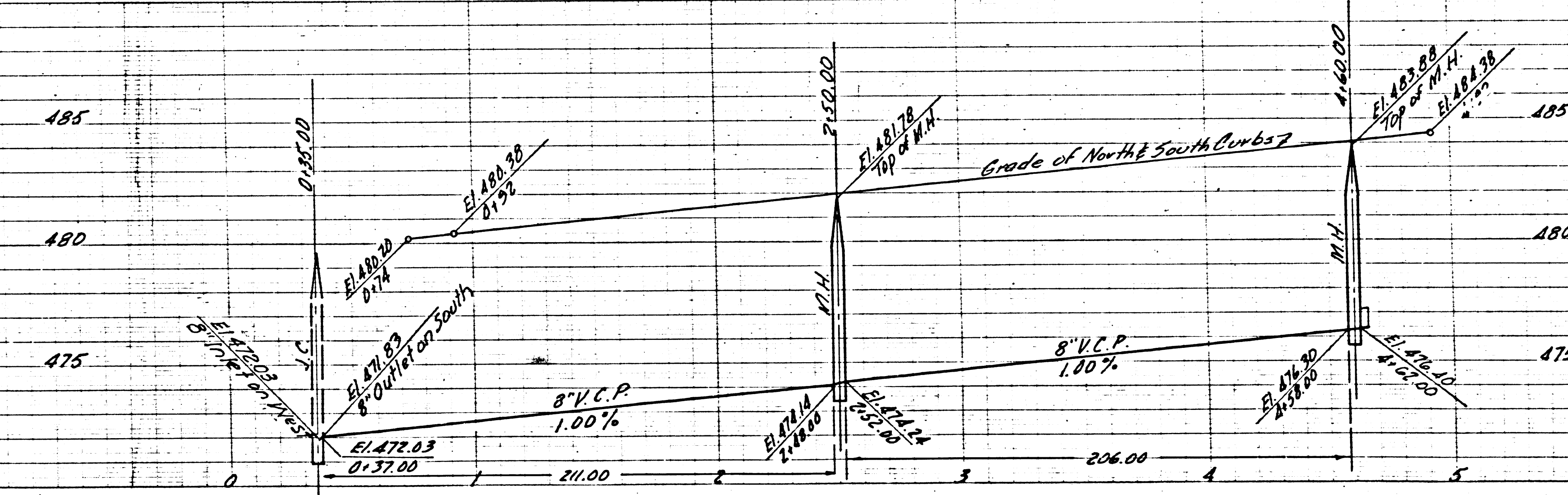
So. Counties Gas Co.
 Santa Rosa Valley Water Co.

Trim Line 1

P.C. 3274
PAGE 6

21,419

COLLECT CHARGES AS INDICATED



Trim Line 2