

277

2

CHARGE FOR CONNECTION

20,021

BMSV 93 Chy D on concrete headwall at N.E. corner of South St. & Paramount Blvd. El. 5378d.

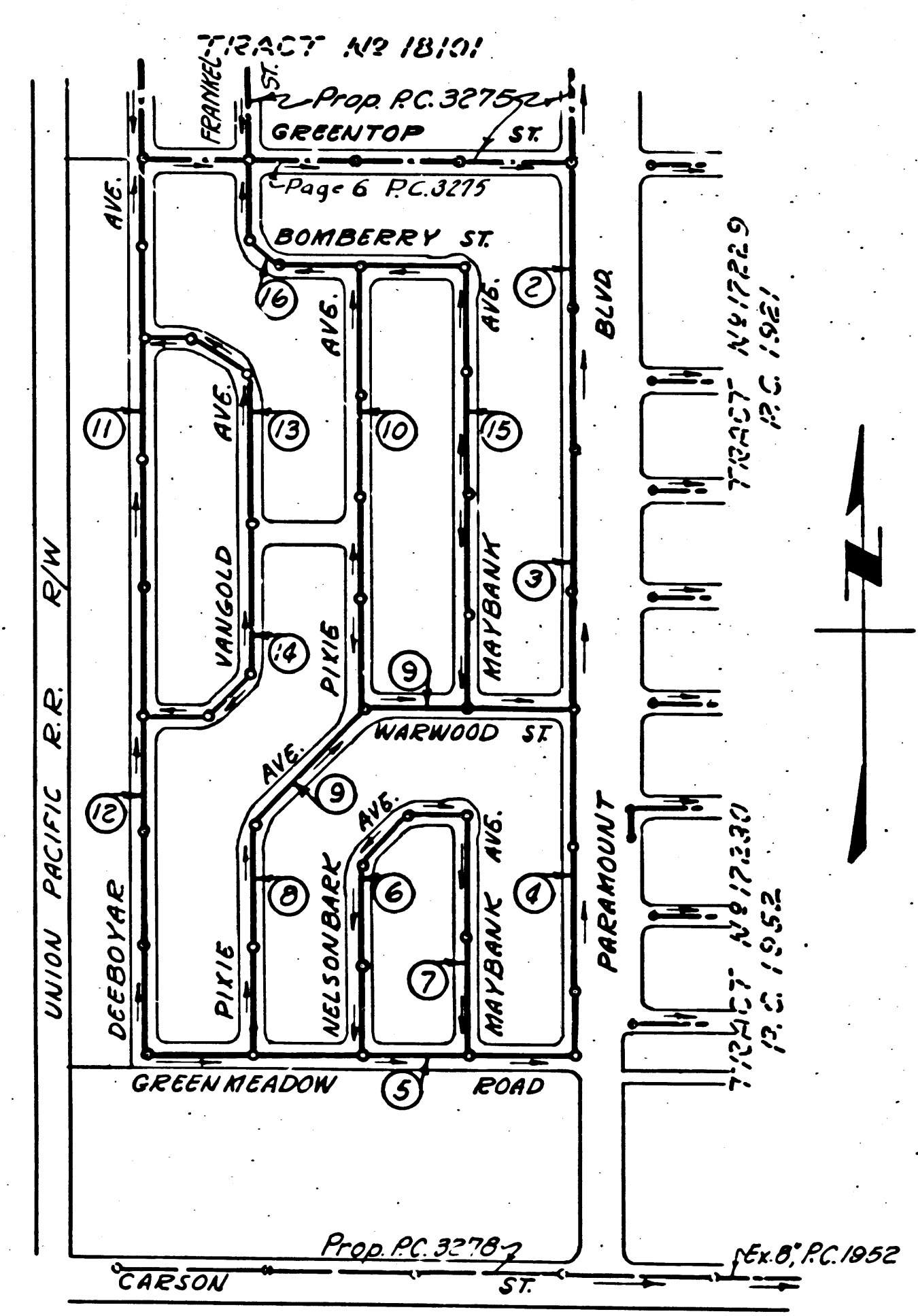
Sheet	Pages
1	1-4
2	5-8
3	9-12
4	13-16

NO CHARGE FOR CONNECTION

L. Carter 12-14-54

NOTE: LOTS 14 THROUGH 25 TO BE SERVED BY PROPOSED SEWER TO BE CONSTRUCTED UNDER P.C. 3275

Revised 3-24-55 W. Brown



INDEX MAP TRACT NO 19904 P.C. 3277 Scale 1"=400'

BELLFLOWER BLDG. DIST. No. 4.

- NOTE: NO REPRESENTATIVE OF THE COUNTY ENGINEER WILL SURVEY OR LAY OUT ANY PORTION OF THE WORK.
- THE OWNER OR HIS AUTHORIZED REPRESENTATIVE SHALL FURNISH THE COUNTY ENGINEER WITH GRADE SHEETS AND STATIONS FOR ALL HOUSE LATERALS AND Y BRANCHES AND SHALL PROVIDE STAKES FOR THEM AT THEIR PROPER LOCATIONS WITH STATIONING PLAINLY MARKED. ANY CHANGE OF LOCATION SHALL BE REQUESTED IN WRITING BY THE OWNER OR HIS REPRESENTATIVE.
- NO REVISIONS SHALL BE MADE IN THESE PLANS WITHOUT APPROVAL OF THE COUNTY ENGINEER.
1. USE STANDARD MANHOLE FRAMES AND COVERS, S-a-117.
 2. USE STANDARD STRENGTH PIPE EXCEPT AS NOTED.
 3. USE CEMENT MORTAR FOR ALL VITRIFIED CLAY PIPE JOINTS.
 4. RESURFACE ALL TRENCH WITHIN PAVED AREA TO MEET L.A. COUNTY ROAD DEPT. REQUIREMENTS IN ACCORDANCE WITH PERMIT.
 5. ENCASE FOUR FEET OF SEWER AT POINTS OF INTERFERENCE WITH POLES, S-a-119.
 6. HOUSE LATERALS TO BE CONSTRUCTED WITH INVERT AT PROPERTY LINE 6 FEET BELOW CURB GRADE, EXCEPT AS NOTED.
 7. ALL STRUCTURES SHALL BE BRICK SEWER STRUCTURES, S-a-104.
 8. PROVIDE STAKES ON THE PROPERTY LINES OR PROPERTY LINES PRODUCED, AT RIGHT ANGLES TO THE SEWER LINE AT THE CENTER LINE OF EACH MANHOLE.
 9. FOR ALLOWABLE LEAKAGE TEST USE FORMULA NO. 1 / SPEC. SEC. 51.

ENGINEERING SERVICE CORPORATION.		1127 W. WASHINGTON BLVD.		LOS ANGELES 15, CALIF.		PR. 7281	
REVISIONS							
Relocated M.H. at Green Meadow Rd. & Paramount Blvd.	16/54	TRACED BY		DES'G'D BY		CK'D BY	
		SUBMITTED					
SUB STRUCTURES OK'D							
W. O. NO.	DWG. NO.	DATE	SCALE	L. B.	F. B.		
5977-99		Nov 1954	As Noted				

Real Estate Rechecked and Approved: R. K. ... 1-12-55 Office of County Engineer Reg. C. E. 7860

Pages 4 & 5 - Revision Approved: R. K. ... 1-10-55 Office of County Engineer Reg. C. E. No. 7860

PROFILE, ALIGNMENT AND GRADE OF SANITARY SEWERS TO BE CONSTRUCTED IN

TRACT No 19904

PRIVATE CONTRACT NO. 3277 W. S. 30 4 SHEETS

NOVEMBER 1954

PREPARED IN THE OFFICES OF ENGINEERING SERVICE CORPORATION

BY: *E. G. ...* REG. C. E. NO. 3692

FOR LEGEND SEE PLAN NO. S-a-64

NOTE: GRADES TO WHICH THIS IMPROVEMENT IS TO BE CONSTRUCTED ARE SHOWN ON PLANS AND PROFILES. GRADE POINTS FOR TOP OF CURB, CENTER LINE OF STREETS, OR CENTER LINE OF ALLEY ARE SHOWN BY CIRCLES ON PROFILES. AT ALL POINTS BETWEEN DESIGNATED POINTS THE GRADE SHALL BE ESTABLISHED SO AS TO CONFORM TO A STRAIGHT LINE DRAWN BETWEEN SAID DESIGNATED POINTS.

ELEVATIONS ARE IN FEET ABOVE U. S. G. S. DATUM OR MEAN SEA LEVEL.

THIS DRAWING AND THE DATA HEREON ARE HEREBY MADE A PART OF THE SPECIFICATIONS.

WORK SHALL BE CONSTRUCTED ACCORDING TO SPECIFICATIONS ON FILE IN THE OFFICE OF THE COUNTY ENGINEER AND SHALL BE PROSECUTED ONLY IN THE PRESENCE OF THE COUNTY ENGINEER.

BEFORE WORK CAN BE STARTED THE CONTRACTOR MUST OBTAIN A PERMIT TO EXCAVATE IN COUNTY STREETS FROM THE L. A. COUNTY ROAD DEPT. 108 W. 2ND ST. AND MAKE A DEPOSIT WITH THE COUNTY ENGINEER, 733 COUNTY ENGINEERING BUILDING SUFFICIENT TO COVER THE COST OF CONSTRUCTION INSPECTION AND RECORD PLANS.

APPROVAL OF THIS PLAN BY THE COUNTY OF LOS ANGELES DOES NOT CONSTITUTE A REPRESENTATION AS TO THE ACCURACY OF THE LOCATION OF, OR THE EXISTENCE OR NON-EXISTENCE OF, ANY UNDERGROUND UTILITY, PIPE, OR STRUCTURE WITHIN THE LIMITS OF THIS PROJECT.

COUNTY OF LOS ANGELES, CALIFORNIA

APPROVED, WILLIAM J. FOX COUNTY ENGINEER

APPROVED, A. M. RAWN CHIEF ENGINEER OF COUNTY SANITATION DISTRICT NO. 3

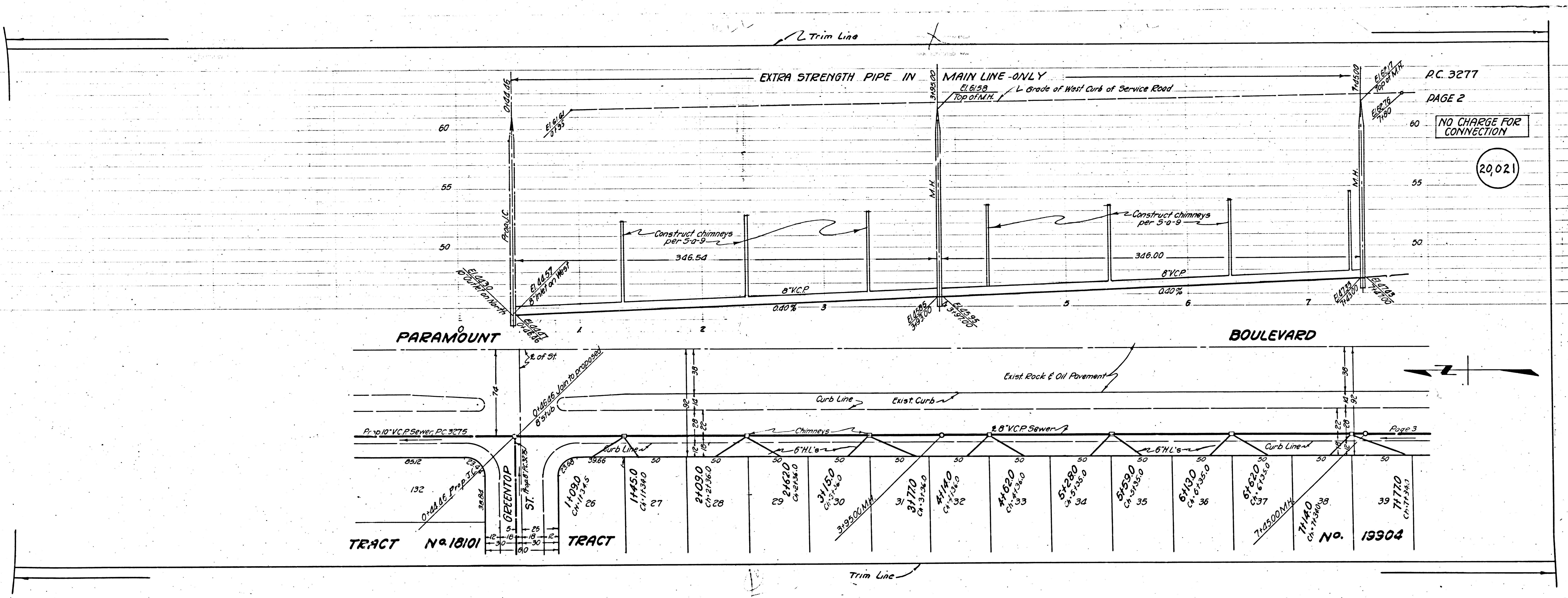
BY: *A. P. ...* Sanitation Engineer

CHECKED BY: *R. K. ...* 12-15-54 OFFICE OF COUNTY ENGINEER REG. C. E. NO. 7860

20,020

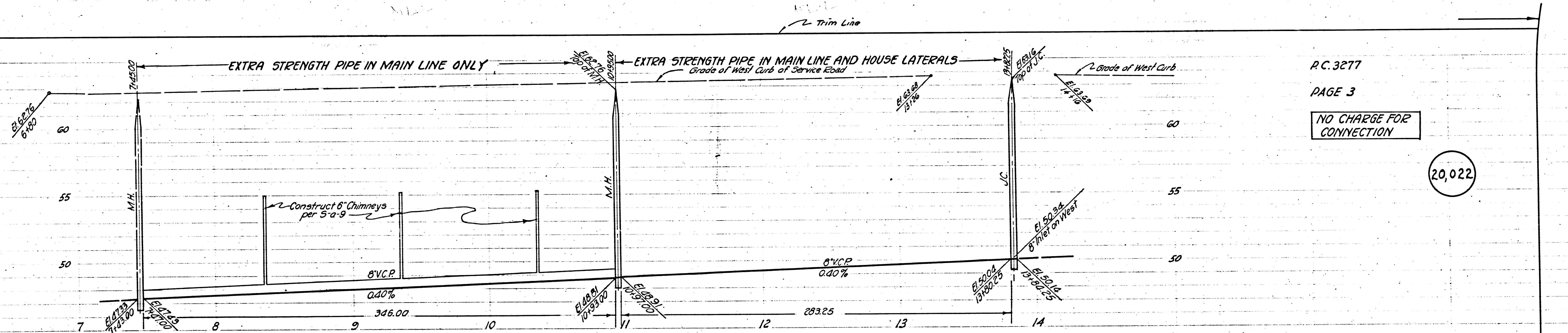
(16)

175632A
10021 IN TRACT
1756351
1



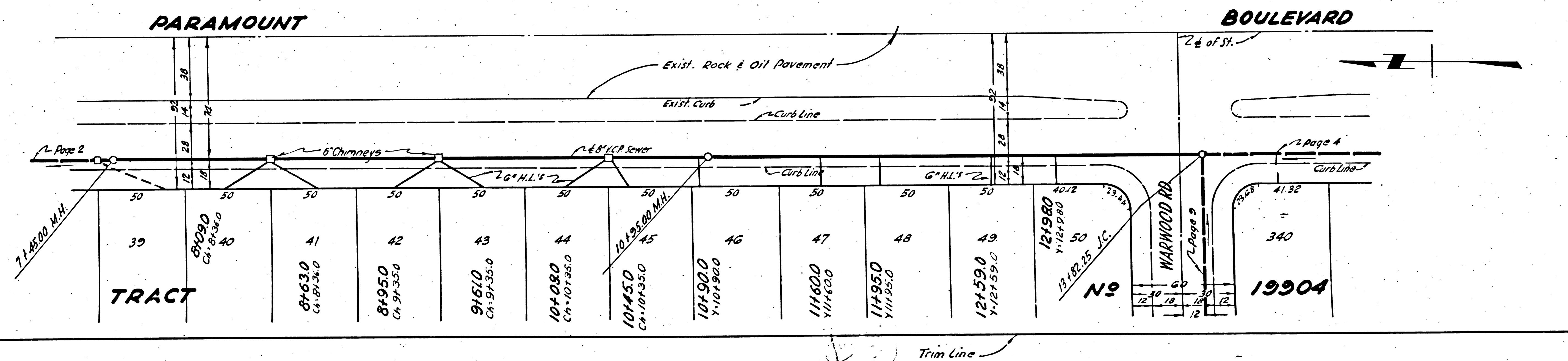
P.C. 3277
PAGE 2
NO CHARGE FOR CONNECTION

20,021



P.C. 3277
 PAGE 3
 NO CHARGE FOR CONNECTION

20,022

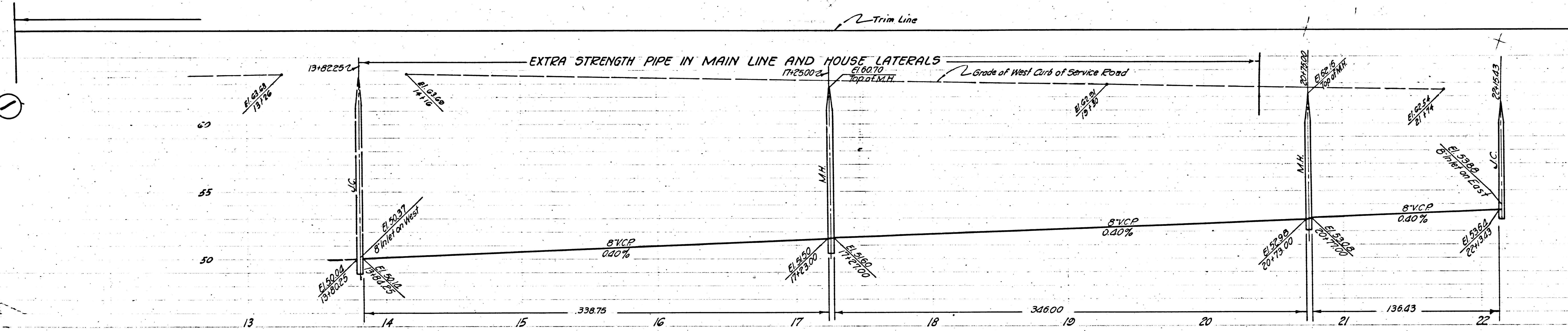


TRACT

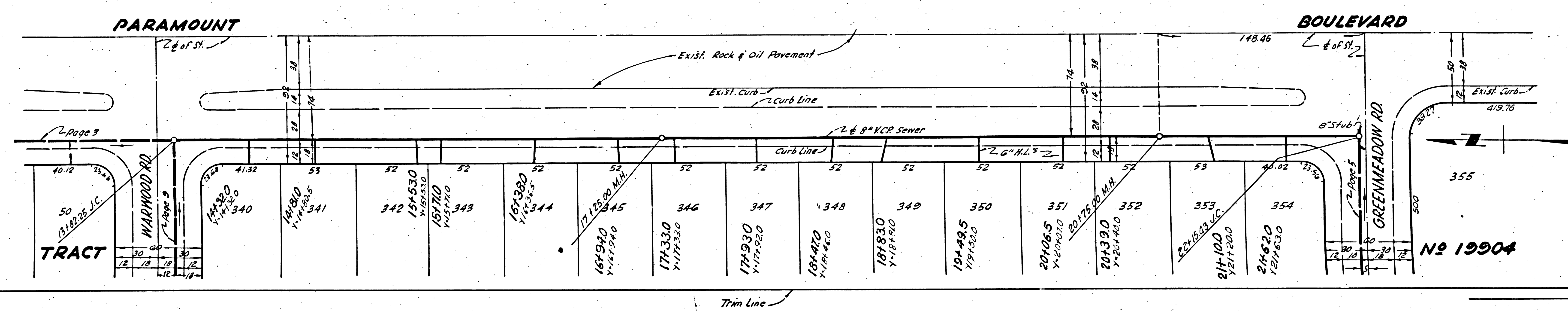
No

19904

SANITARY SEWERS TRACT 19904



RC 3277
PAGE 4
NO CHARGE FOR CONNECTIONS
20,023



No 19904

NO CHARGE FOR CONNECTION

20,024

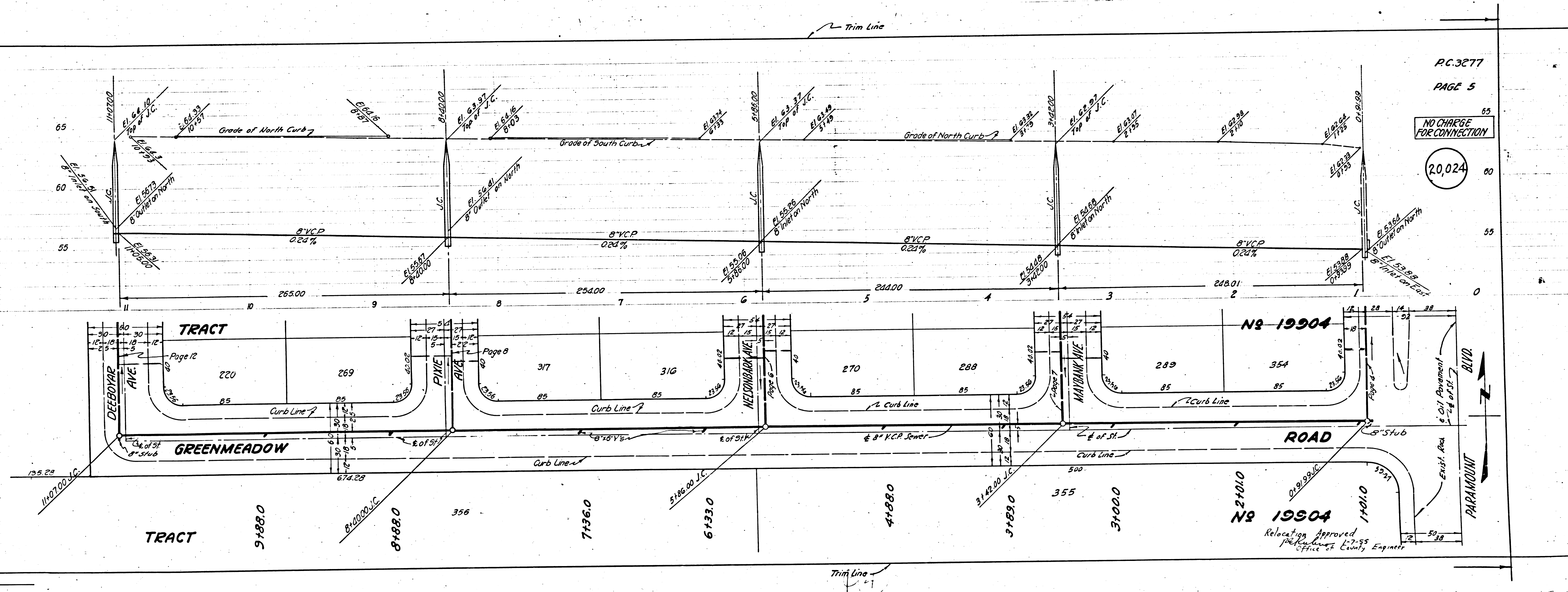
14010
14010
14010

Relocation Approved
7-53
Office of Equity Engineer

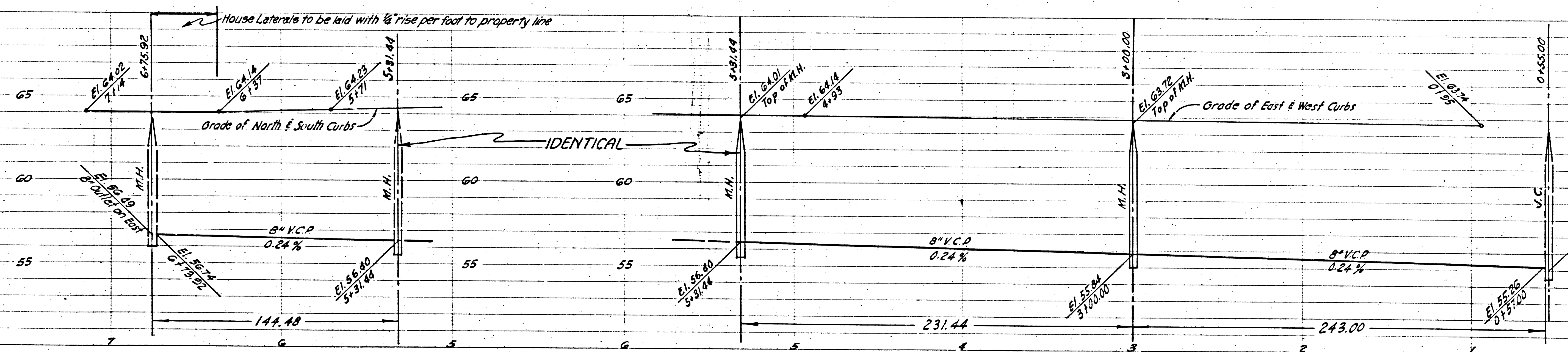
5

175529A BOBSON TRACT

RC 3511



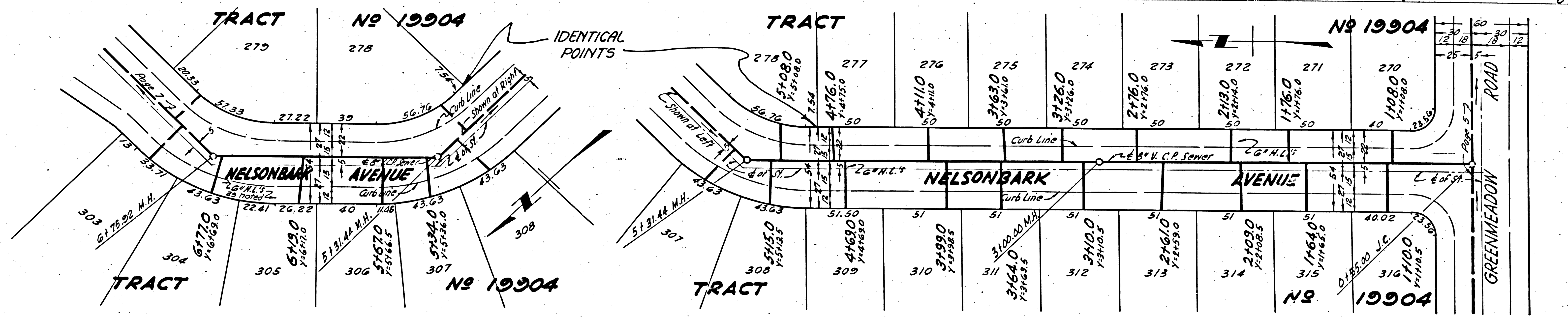
Trim Line



P.C. 3277
PAGE 6

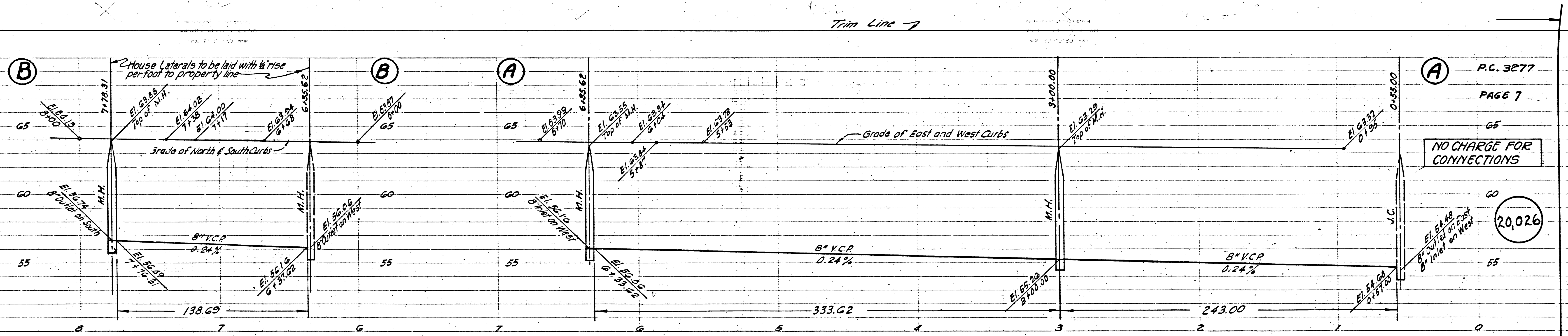
NO CHARGE FOR CONNECTIONS

21.55'±
8\"/>



Trim Line

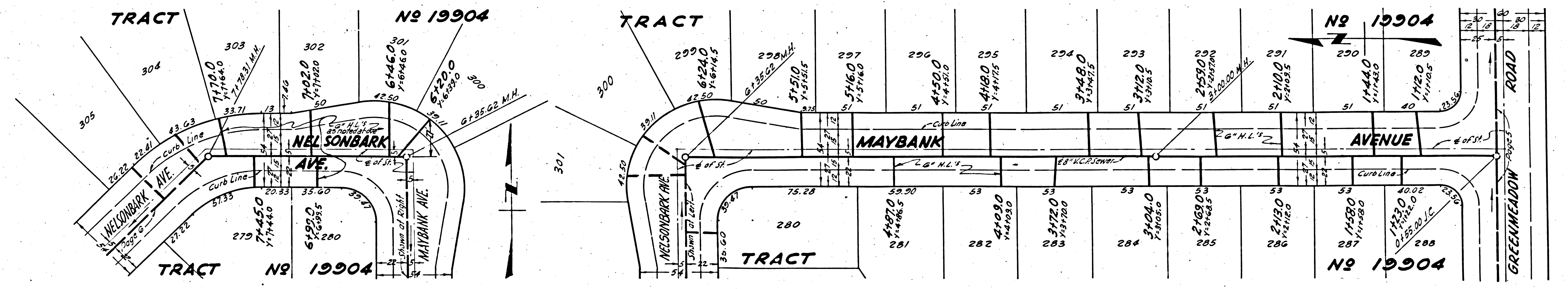
3 1/2'

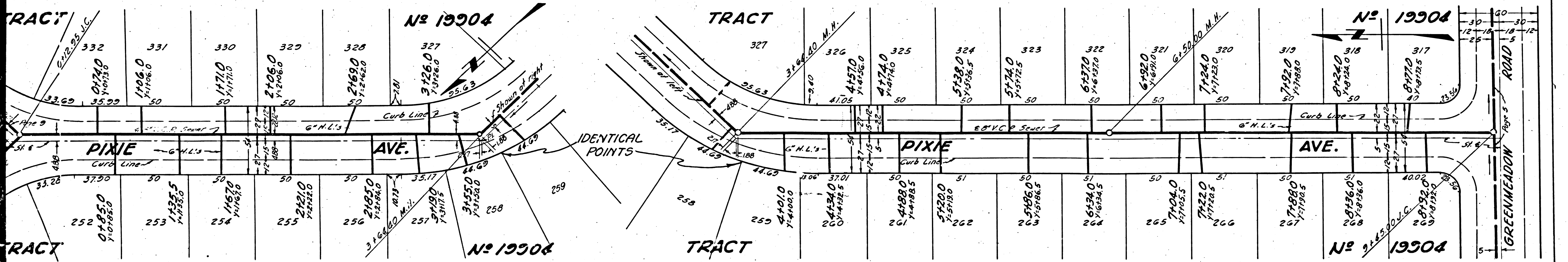
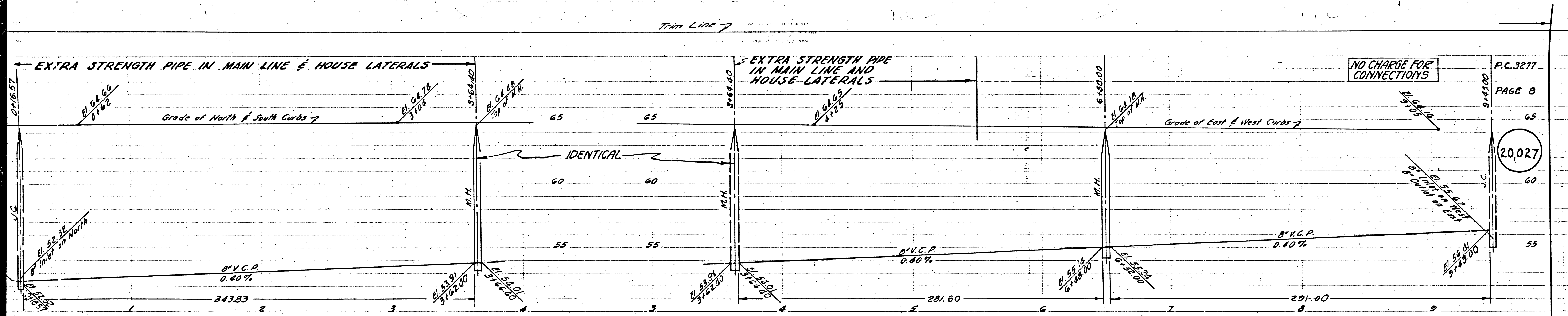


P.C. 3277
PAGE 7

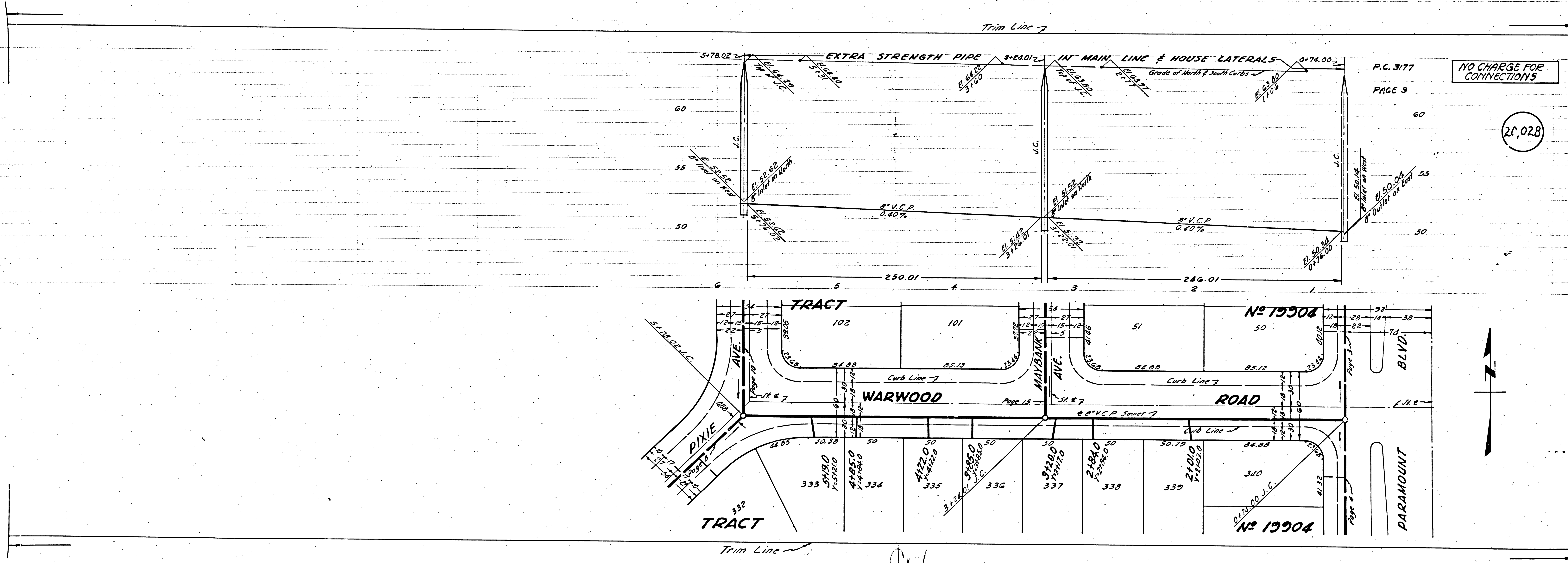
NO CHARGE FOR CONNECTIONS

20,026





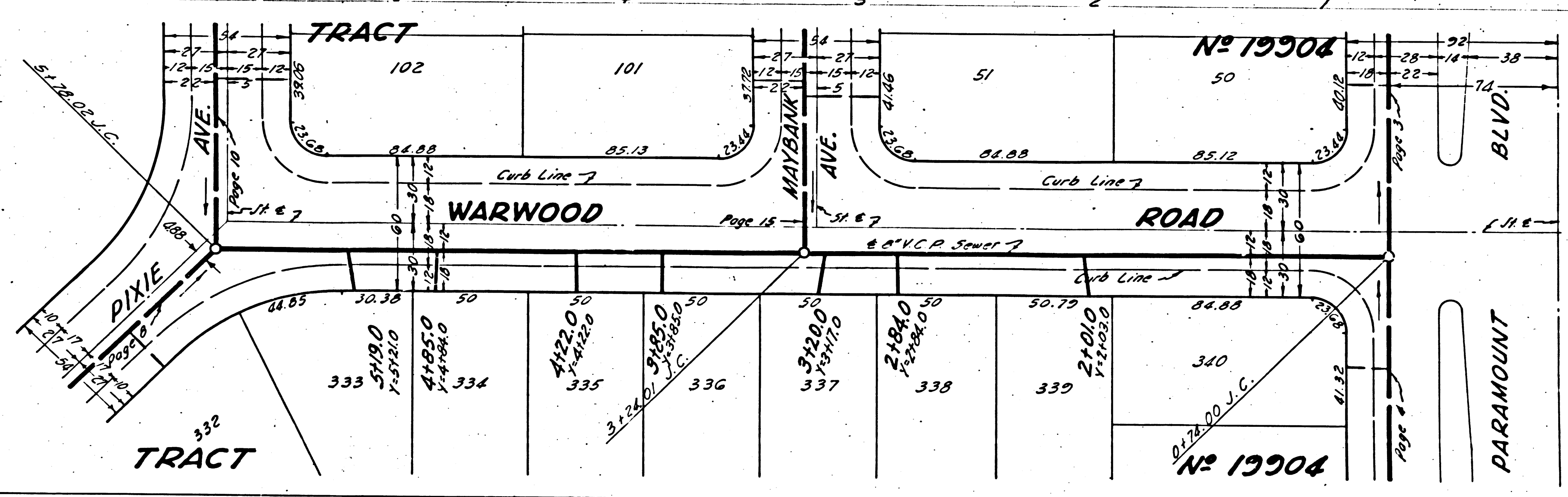
P.C. 3277
PAGE 8
20,027



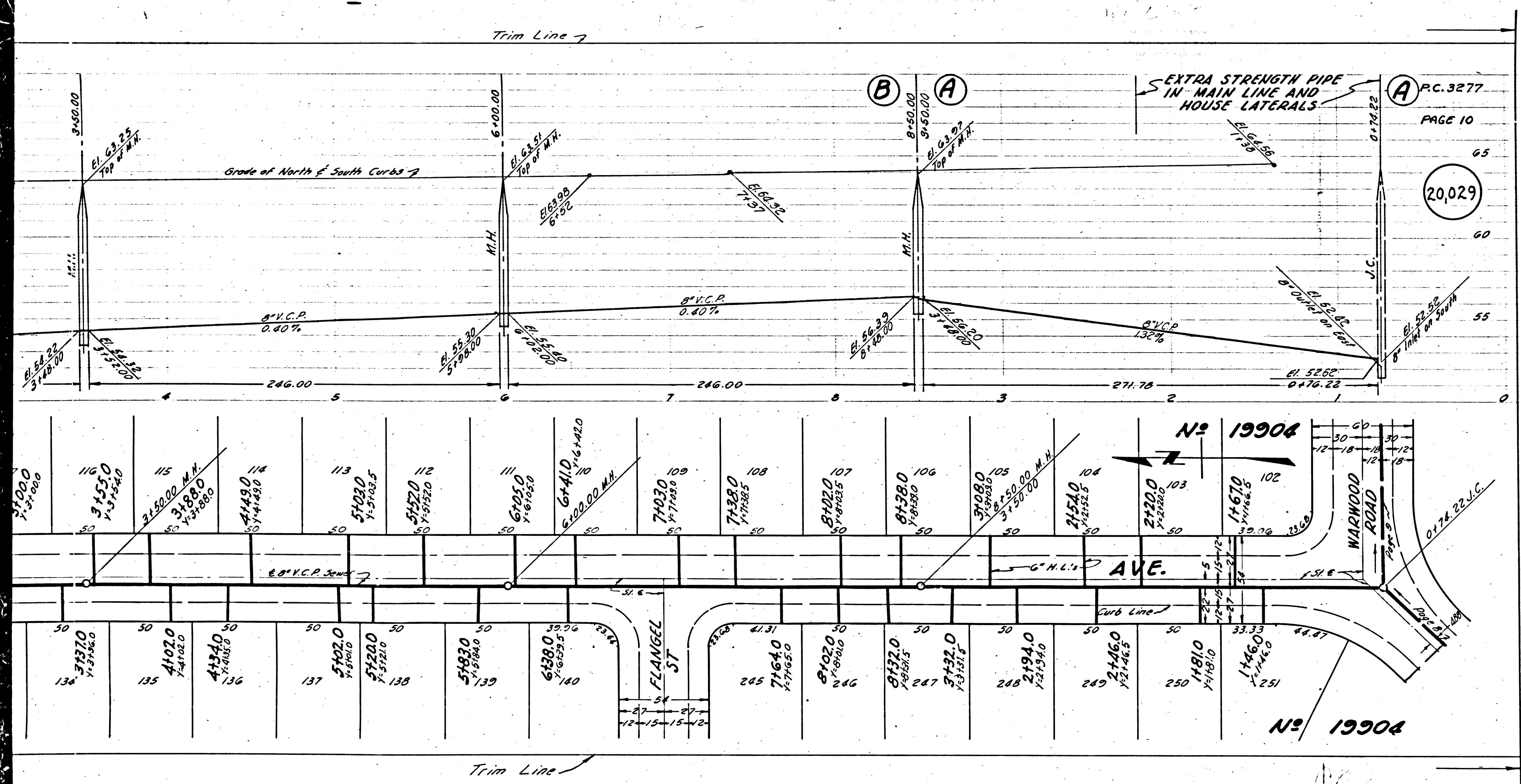
P.C. 3177
PAGE 9

NO CHARGE FOR CONNECTIONS

20,028



PC 3177
PAGE 9

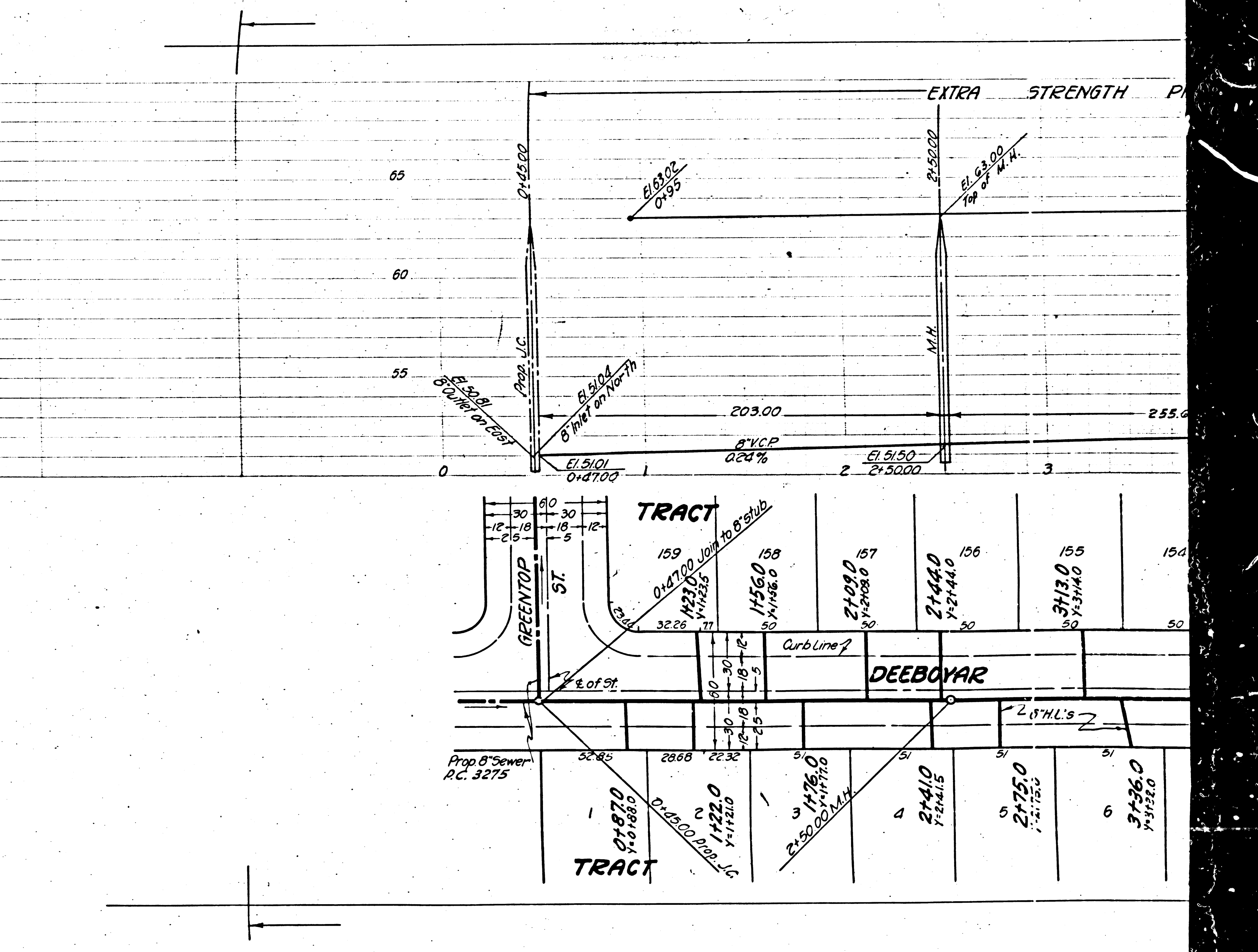
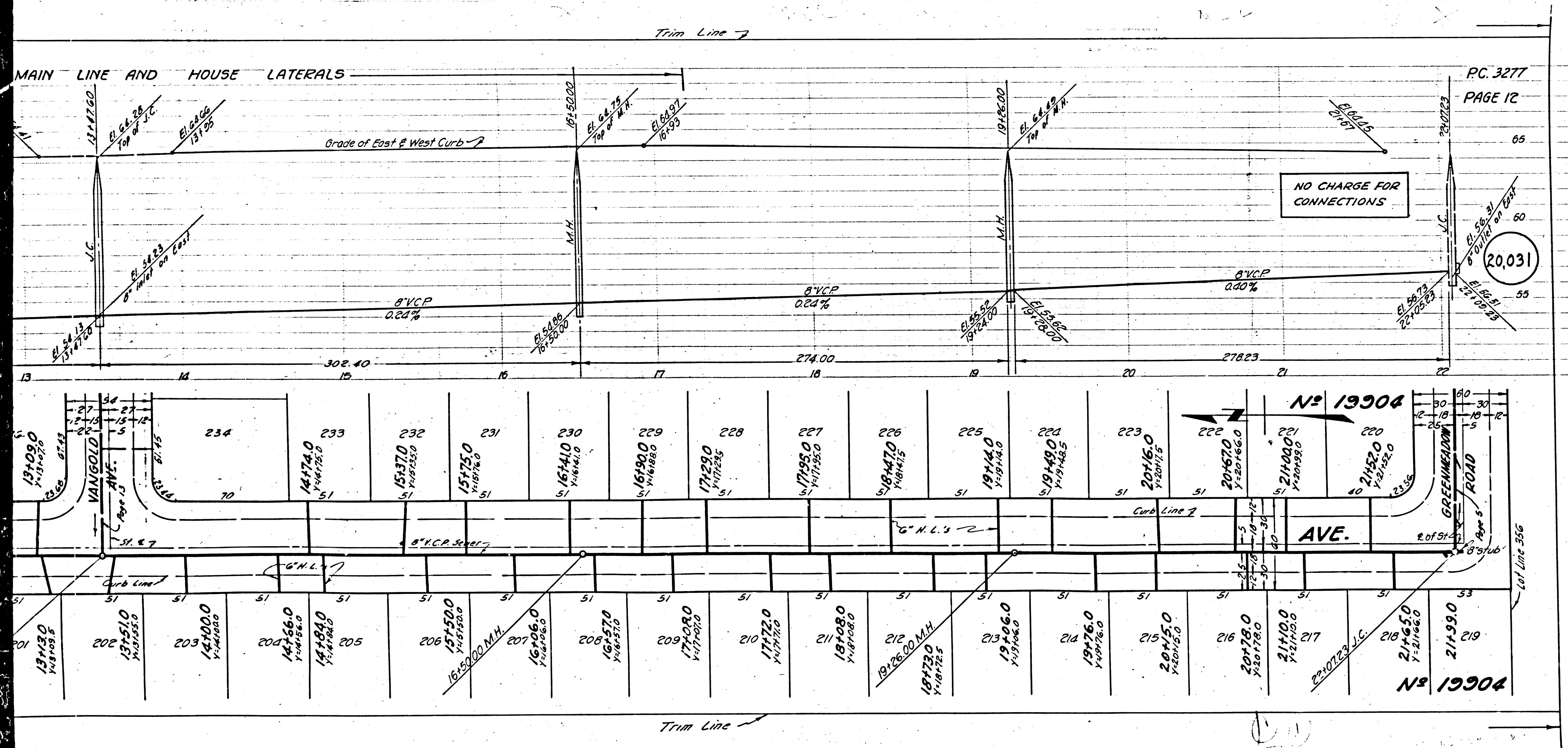


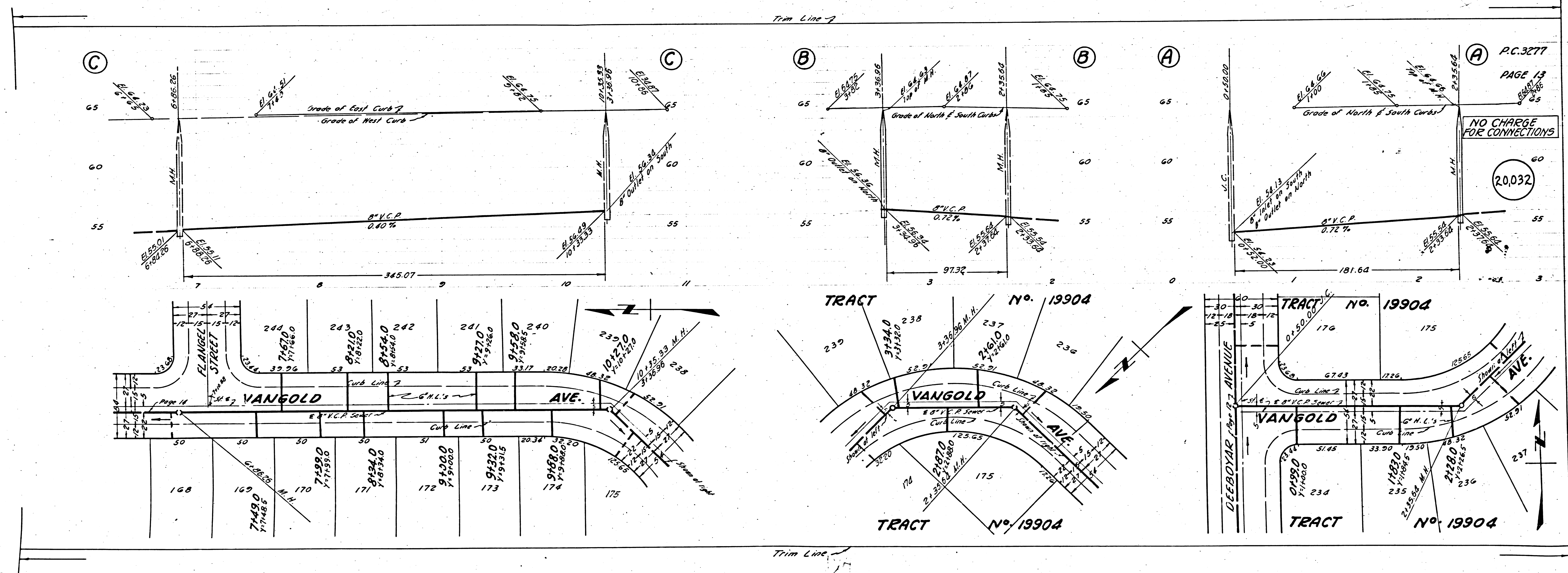
PAGE 10

20,029

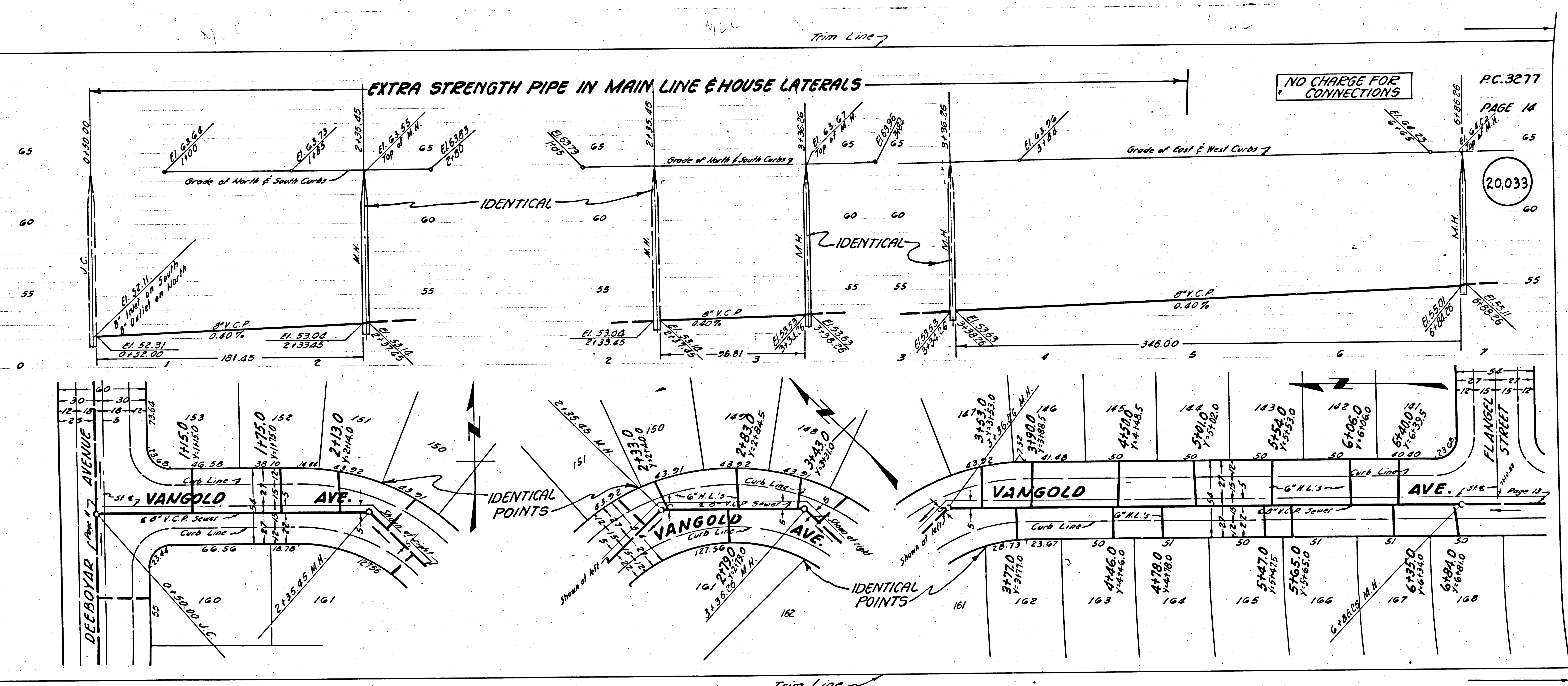
Nº 19904

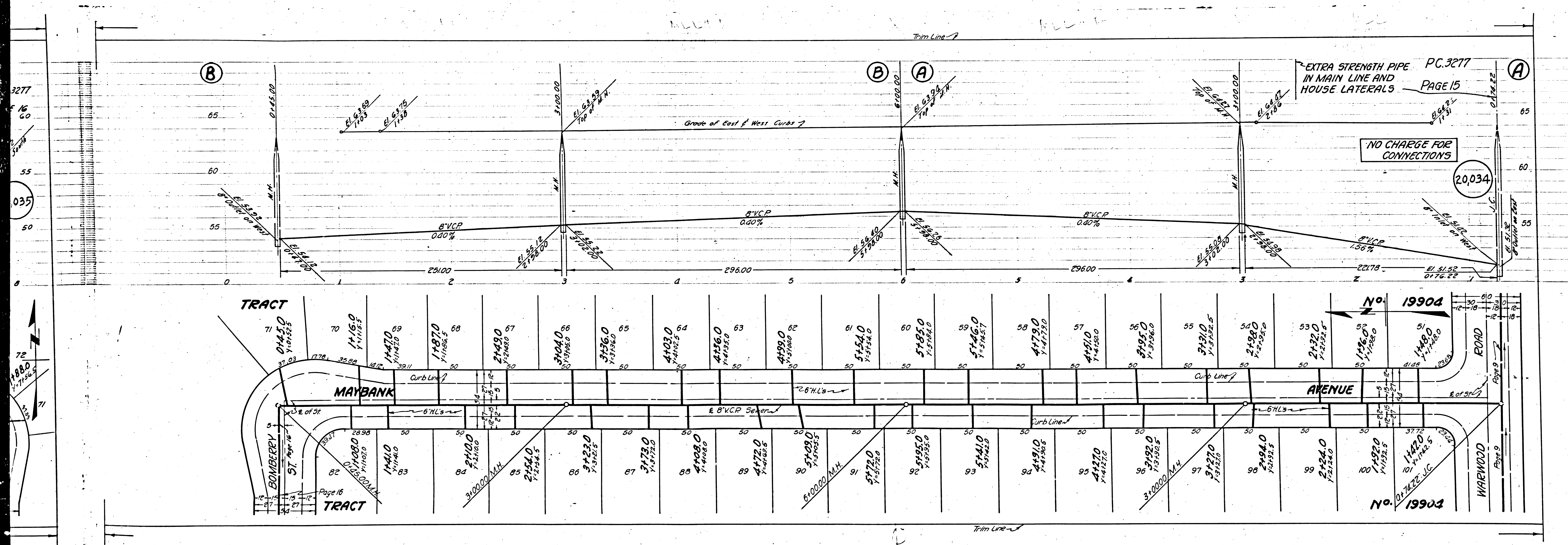
Nº 19904





P.C. 3277
 PAGE 13
 NO CHARGE FOR CONNECTIONS
 20,032
 DEBOVAR AVENUE
 TRACT No. 19904
 VANGOLD AVE.
 TRACT No. 19904
 TRACT No. 19904





EXTRA STRENGTH PIPE
IN MAIN LINE AND
HOUSE LATERALS

NO CHARGE FOR
CONNECTIONS

No. 19904

No. 19904

20,034

3277
16
60
55
035
50

72
1880
71

Page 16

Page 9

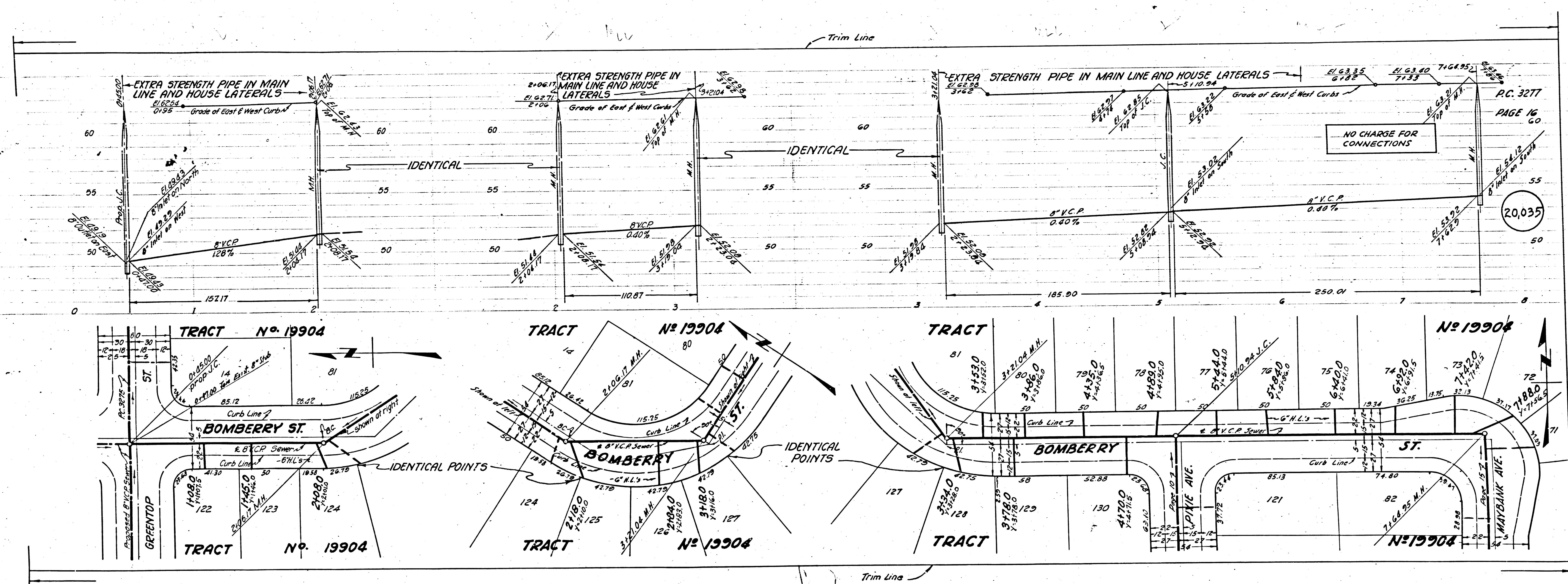
25117122

TRACT No. 19904

BC3511

3

3



8

65
60
55
50

20,035

NO CHARGE FOR CONNECTIONS

P.C. 3277

PAGE 16

GO

Grade of East & West Curbs

Grade of East & West Curbs

Grade of East & West Curbs

Grade of East & West Curbs

Grade of East & West Curbs

Grade of East & West Curbs

Grade of East & West Curbs

Grade of East & West Curbs

Grade of East & West Curbs