

PC 3282

PAGE 2

SCALE

NO CHARGE FOR CONNECTIONS

19,703

L.Q. 754-359-B.M. A14-Elev. 94.17 Bull. Washer set in lead 2ft. N. of N.W. corner of N.E. Ramp off Slauson Ave. to La Cienega Blvd (P.B. 200-H.L.A.I. Co)

NOTE: Add 5.775 to bench mark and all elevations shown hereon to convert to U.S.G.S. elevations. Add 5.375 to all elevations shown hereon to agree with L.A. County Road Dept's B.M.'s (Slauson Ave. Circuit) shown as L.Q. 754-359

LENNOX BLDG. DIST. NO. 7

NOTE:

- 1. Provide stakes on the property lines of property lines produced at right angles to the sewer line at the center line of each manhole.
- 2. No representative of the County Engineer will survey or layout any portion of the work.
- 3. The owner or his authorized representative shall furnish the County Engineer with grade sheets and stations for all house laterals and Y branches and shall provide stakes for them at their proper locations with stationing plainly marked. Any change in location shall be requested in writing by the owner or his representative.
- 4. No revisions shall be made in these plans without the approval of the County Engineer.
- 5. Use standard manhole frames and covers, S-a-117.
- 6. Use standard strength pipe except as noted.
- 7. Use cement mortar for all vitrified clay pipe joints.
- 8. Resurface all trash within paved areas to meet L.A. County Road Dept. or California State Highway Dept. requirements in accordance with plans.
- 9. Encase four feet of sewer at points of interference with poles, S-a-119.
- 10. House laterals to be constructed with inverts at property line 6 feet below curb grade except as noted.
- 11. All structures shall be brick sewer structures, S-a-104.
- 12. For allowable leakage test, use Formula No. 1, Spec's., Sec. 51.

PROFILE, ALIGNMENT AND GRADE OF  
SANITARY SEWERS  
TO BE CONSTRUCTED IN  
TRACT NO 18827

PC. 3282  
PAGE 1

19,702

PRIVATE CONTRACT NO. 3282  
W. S. 24  
1 SHEET

Scale: VERT. 1"=6'  
HORIZ. 1"=40'  
OCT 1954  
PREPARED IN THE OFFICES OF  
LOS ANGELES INVESTMENT CO.  
By *[Signature]*  
Reg. C. E. No. 1629  
FOR LEGEND SEE PLAN NO S-a-64

NOTE:

Grades to which this improvement is to be constructed are shown on plans and profiles. Grade points for top of curbs, center line of streets, or center line of alleys are shown by circles on profiles. At all points between designated points the grade shall be established so as to conform to a straight line drawn between designated points.

Elevations are 5.775ft. above U.S.G.S. datum or mean sea level. See note to left hereon.

This drawing and the data hereon are hereby made a part of the specifications.

Work shall be constructed according to specifications on file in the office of the County Engineer and shall be prosecuted only in the presence of the County Engineer.

Before work can be started, the contractor must obtain a permit to excavate in County streets from the L.A. County Road Dept., 108 W. 2nd St. and make a deposit with the County Engineer, 733 L.A. County Engineering Building, sufficient to cover the cost of construction inspection and record plans.

Approval of this plan by the County of Los Angeles does not constitute a representation as to the accuracy of the location of or the existence or non-existence of any underground utility, pipe, or structure within the limits of this project. This note applies to all sheets.

If work is to be done in a State Highway, a permit must be obtained from the State of California, Division of Highways, 120 South Spring Street.

COUNTY OF LOS ANGELES, CALIFORNIA

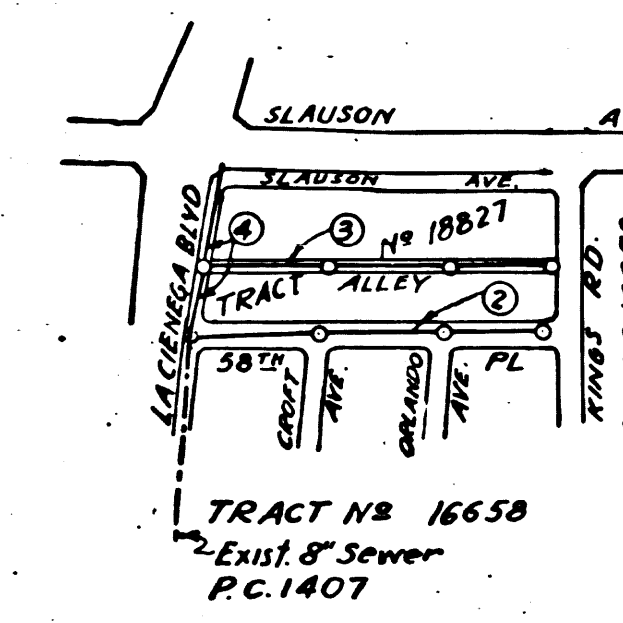
Approved, William J. Fox, County Engineer  
Sanitation Engineer

Approved, A. M. Rawn  
CHIEF ENGR. CG SAN DIST. NO. 5  
Office Engineer

Checked By: *[Signature]* 12-7-54  
Office of County Engineer Reg. C. E. No. 2860

SHEET NO	PAGES
1	1-4

NO CHARGE FOR CONNECTIONS  
*[Signature]* 12-7-54



INDEX MAP  
SCALE: 1"=600'  
PC. 3282

Checked 1-11-55 *[Signature]*

TRACT NO 18827  
PC. 3282

19,702

PC.3282  
PAGE 3  
DOUBLE SCALE

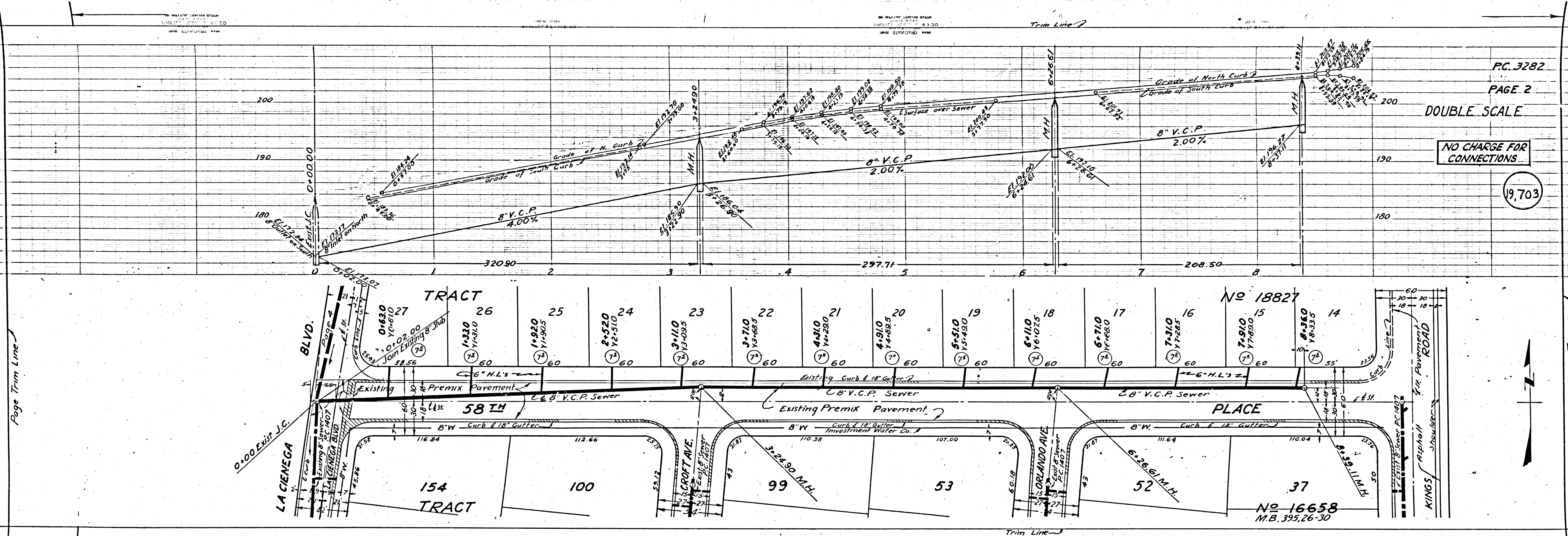
NO CHARGE FOR CONNECTIONS

19,704

PC.3282  
PAGE 2  
DOUBLE SCALE

NO CHARGE FOR CONNECTIONS

19,703



P.C. 3282  
PAGE 4  
DOUBLE SCALE

NO CHARGE FOR CONNECTIONS

19,705

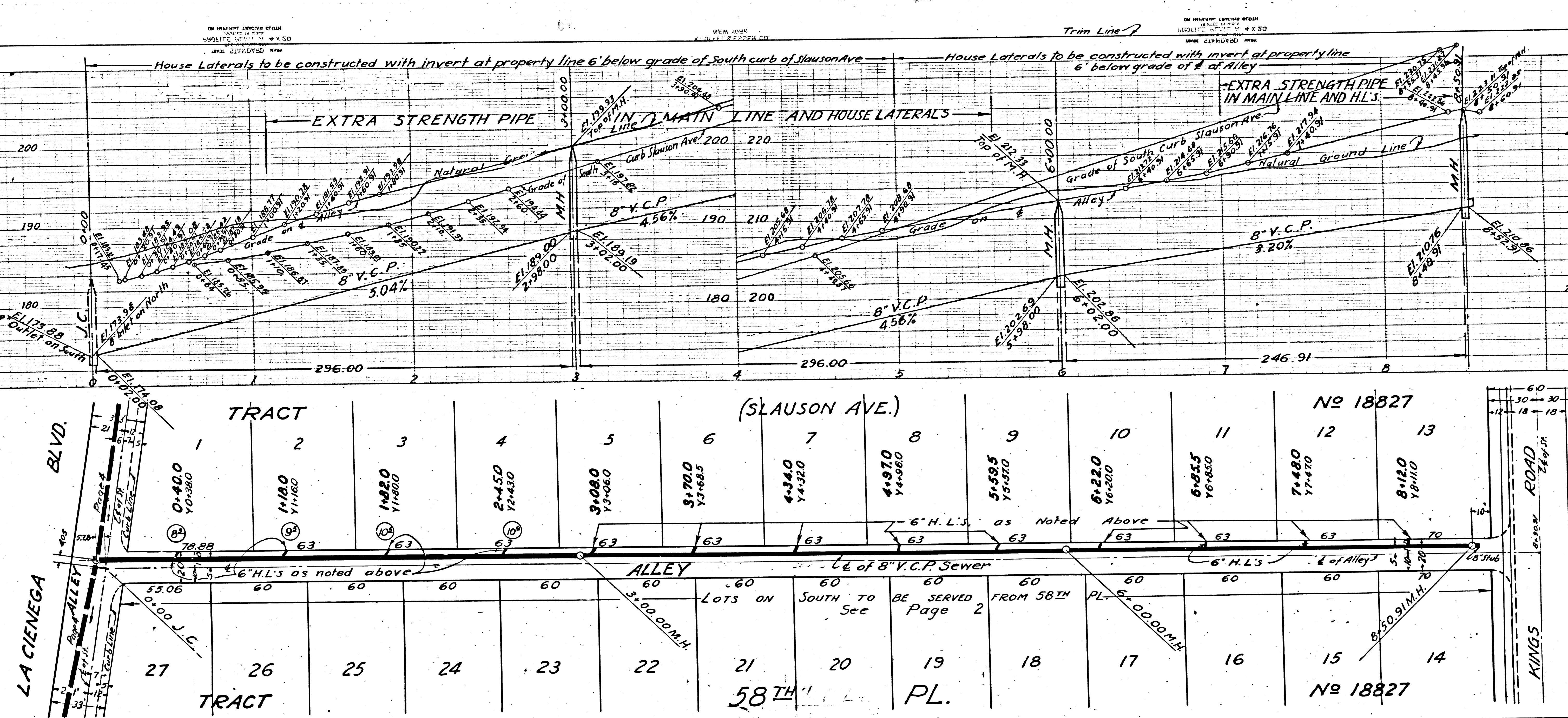
P.C. 3282  
PAGE 3  
DOUBLE SCALE

NO CHARGE FOR CONNECTIONS

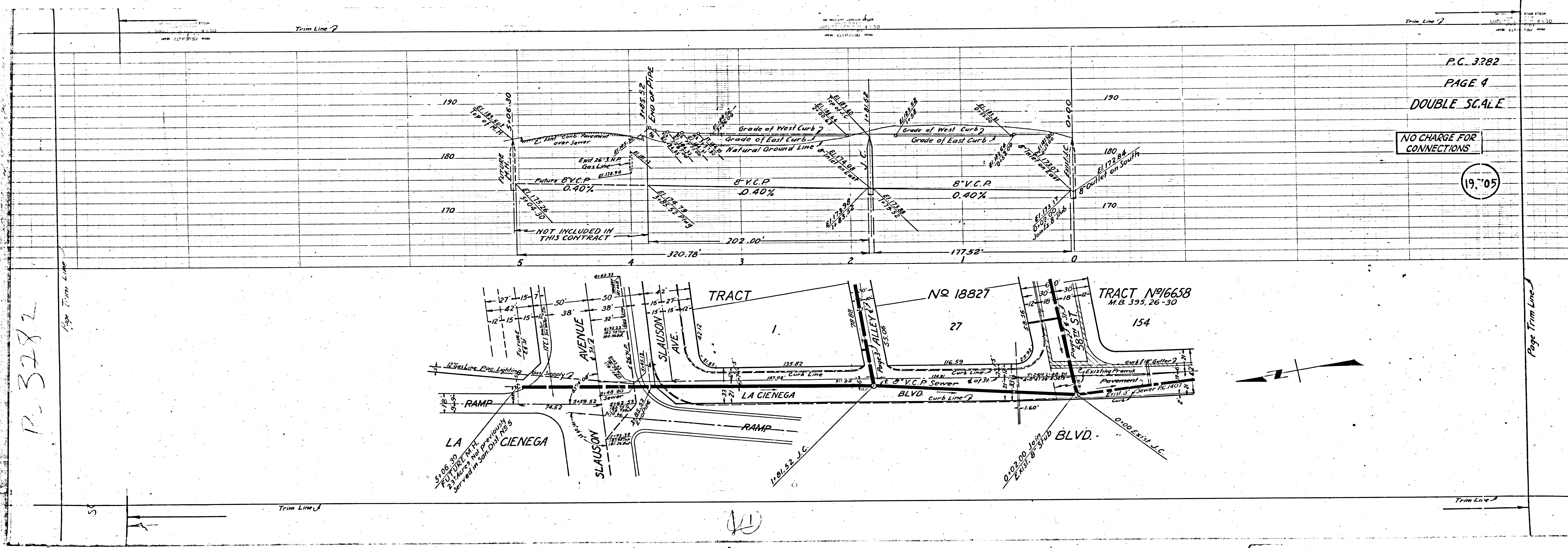
19,704

Page Trim Line

Page Trim Line



2



P.C. 3282  
 PAGE 4  
 DOUBLE SCALE

NO CHARGE FOR CONNECTIONS

19'05

P.C. 3282

(11)

