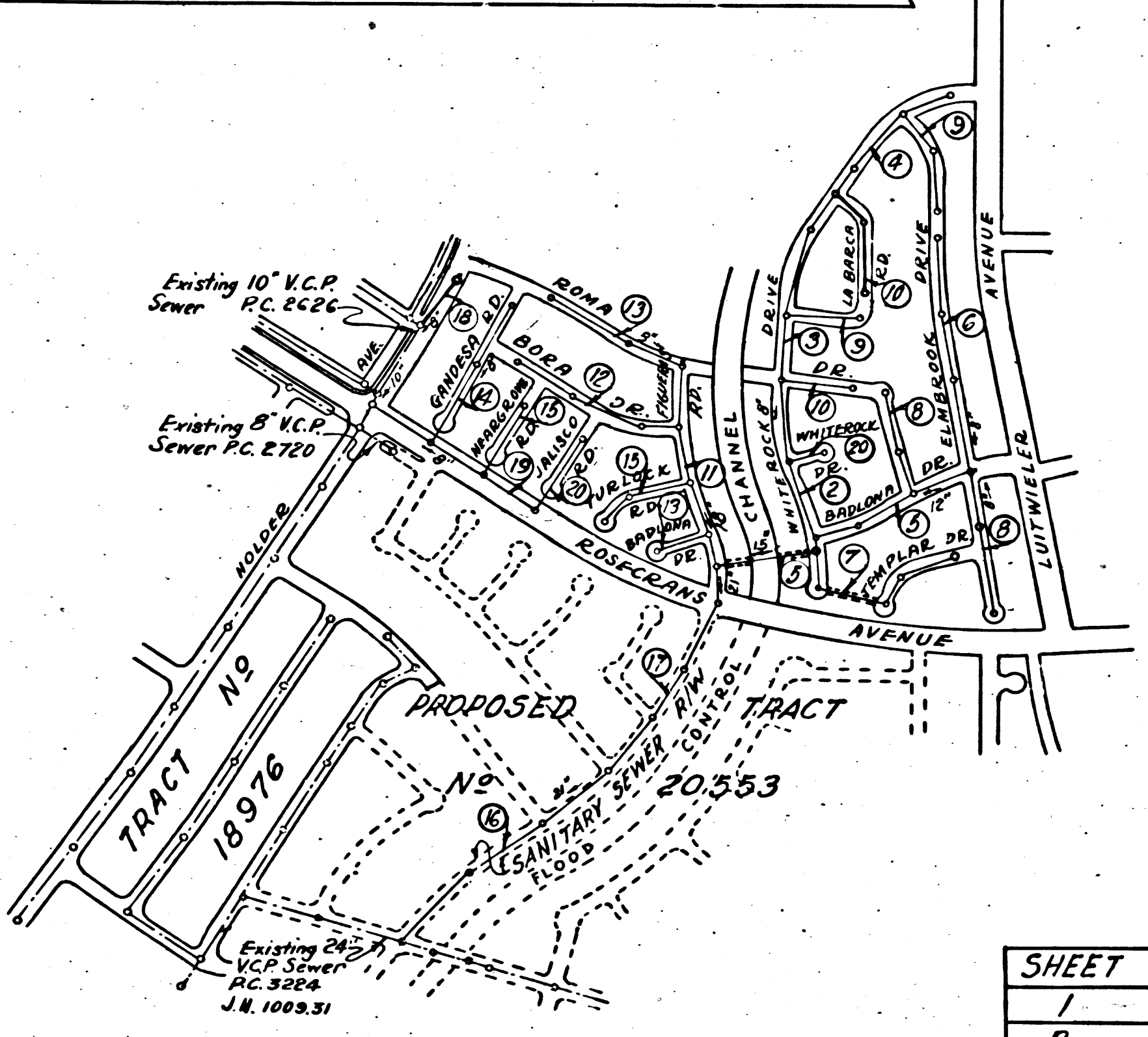


Bench Mark: B.M. 3-2 Std. Co. Surv. Mon marked
set in conc. 16" below surface on approx. E
of Luitwieler Ave. 72' N. of E. of Stage Rd. in
well protected by cast iron cover, per C.S.F.B.
1204-6 L.A. Co. 1952 Adj. El. = 109.862



INDEX MAP
SCALE 1"=400'
TRACT NO 17945
P.C. 3289

SHEET	PAGE
1	1-5
2	6-10
3	11-15
4	16-20

BELLFLOWER BLDG. DIST. NO 4

NOTE: Provide stakes on the property lines or property lines produced at right angles to the sewer line at the center line of each manhole. No representative of the County Engineer will survey or layout any portion of the work. The owner or his authorized representative shall furnish the County Engineer with grade sheets and stations for all house laterals and Y branches and shall provide stakes for them at their proper locations with stationing plainly marked. Any change in location shall be requested in writing by the owner or his representative. No revisions shall be made in these plans without the approval of the County Engineer.

1. Use standard manhole frames and covers, S-a-117.
2. Use standard strength pipe except as noted.
3. Use cement mortar for all vitrified clay pipe joints.
4. Resurface all trench within paved area to meet L.A. County Road Dept. or Calif. State Highway Dept. requirements in accordance with permit.
5. Encase four feet of sewer at points of interference with poles, S-a-119.
6. House laterals to be constructed with inverts at property line.....6.....feet below curb grade except as noted.
7. All structures shall be brick sewer structures, S-a-104.
8. Manhole tops in unimproved Rights-Of-Way to be 6" above finish grade.
9. For allowable leakage test, use Formula No. L....., Specs., Sec. 51.

NOTE: The Contractor shall satisfy himself of all substructures and shall be responsible for their location

CONNECTION CHARGES
AS INDICATED
- 23 - 1-7-55

PROFILE, ALIGNMENT AND GRADE OF
SANITARY SEWERS
TO BE CONSTRUCTED IN
TRACT NO 17945
PRIVATE CONTRACT NO. 3289
W.S. 34
4 SHEETS
Scale: VERT. 1"=8'
HORIZ. 1"=40'
DECEMBER 1954
PREPARED IN THE OFFICES OF
WM. H. FAIR, JR.
Reg. C. E. No. 8583
FOR LEGEND SEE PLAN NO. S-a-64

NOTE: Grades to which this improvement is to be constructed are shown on plans and profiles. Grade points for top of curbs, center line of streets, or center line of alleys are shown by circles on profiles. At all points between designated points the grade shall be established so as to conform to a straight line drawn between said designated points. Elevations are in feet above U.S.G.S. datum or mean sea level. This drawing and the data hereon are hereby made a part of the specifications. Work shall be constructed according to specifications on file in the office of the County Engineer and shall be prosecuted only in the presence of the County Engineer. Before work can be started, the contractor must obtain a permit to excavate in County streets from the L.A. County Road Dept., 108 W. 2nd St. and make a deposit with the County Engineer, 733 L.A. County Engineering Building, sufficient to cover the cost of construction inspection and record plans. Approval of this plan by the County of Los Angeles does not constitute a representation as to the accuracy of the location of or the existence or non-existence of any underground utility, pipe, or structure within the limits of this project. This note applies to all sheets. If work is to be done in a State Highway, a permit must be obtained from the State of California, Division of Highways, 120 South Spring Street.

COUNTY OF LOS ANGELES, CALIFORNIA
Approved, William J. Fox, County Engineer
Approved, A. M. Rawn
CHIEF ENGR. CO. SAN. DIST. NO. 18
Checked By: [Signature] 1-7-55
Office of County Engineer, Reg. C. E. No. 7862

P.C. 3289
Page 1
DOUBLE SCALE

20,594

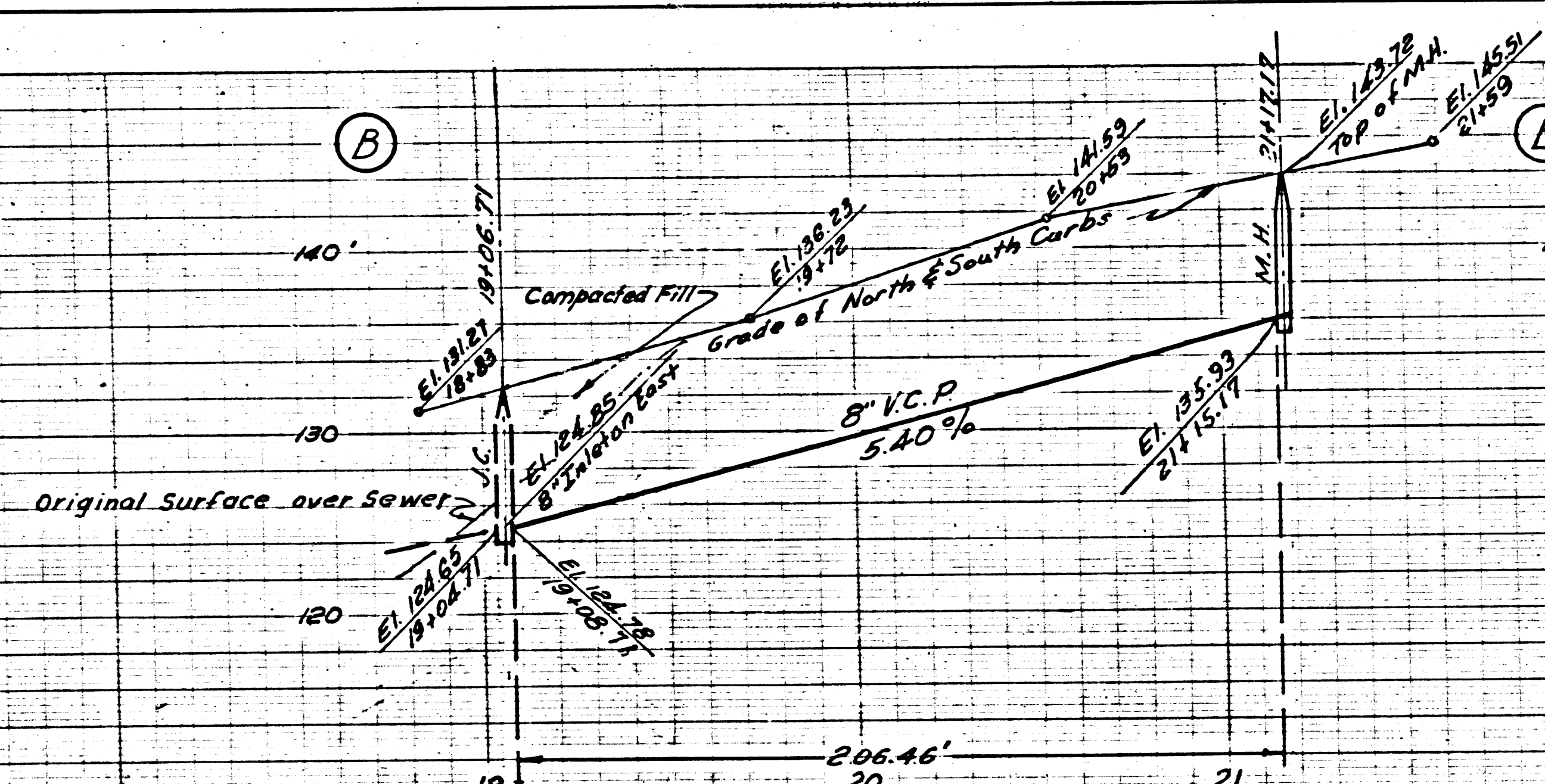
TRACT NO 17945
P.C. 3289
RBS:CA

Trim Line

PC. 3289

PAGE 5
Double Scale

20,598

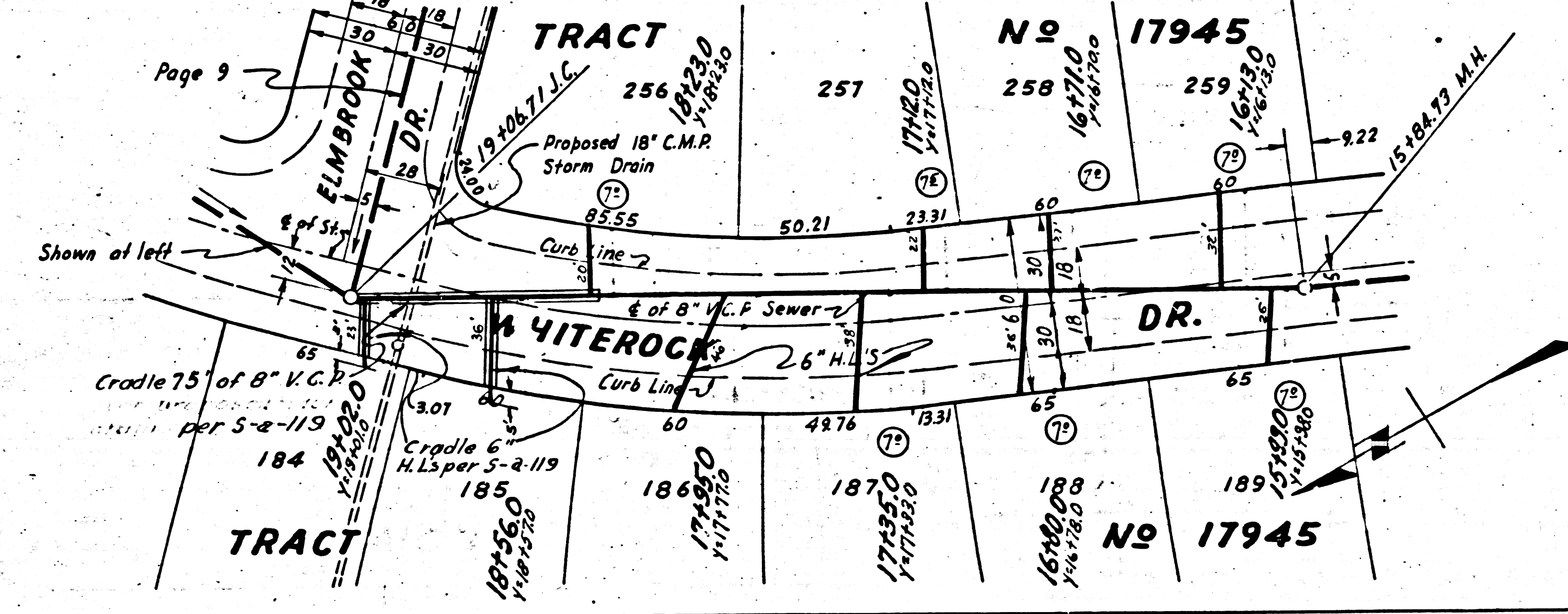
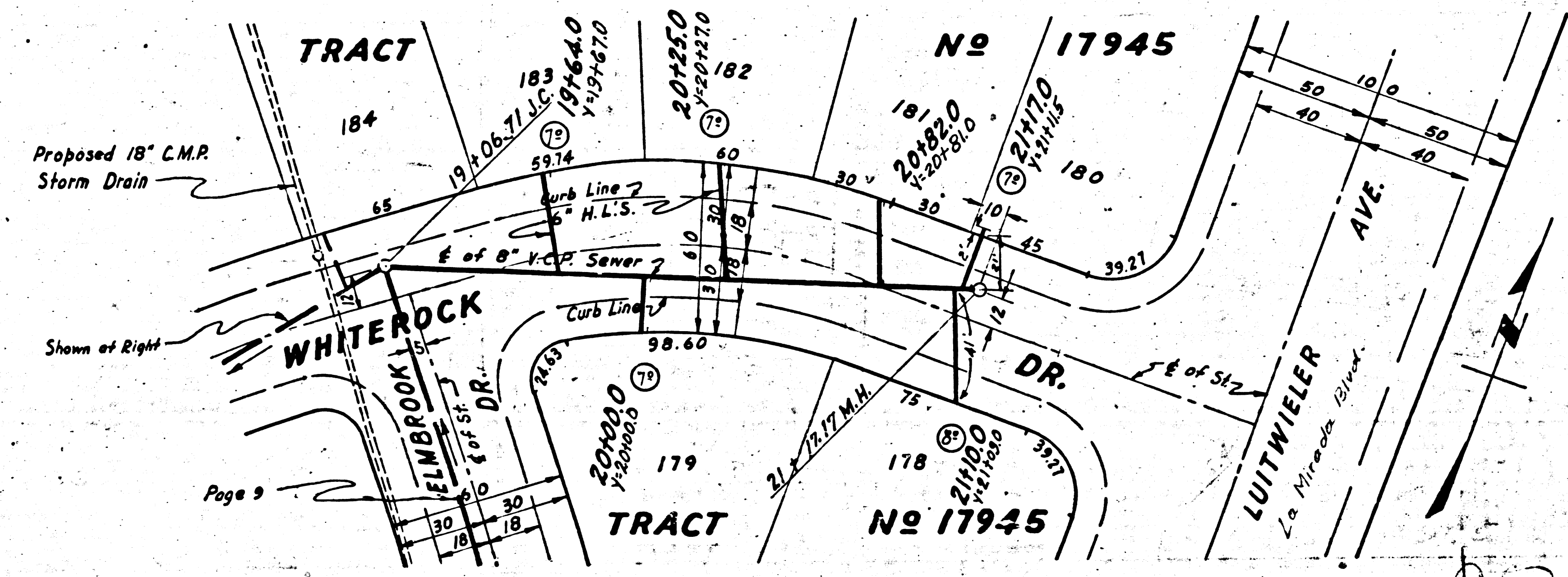
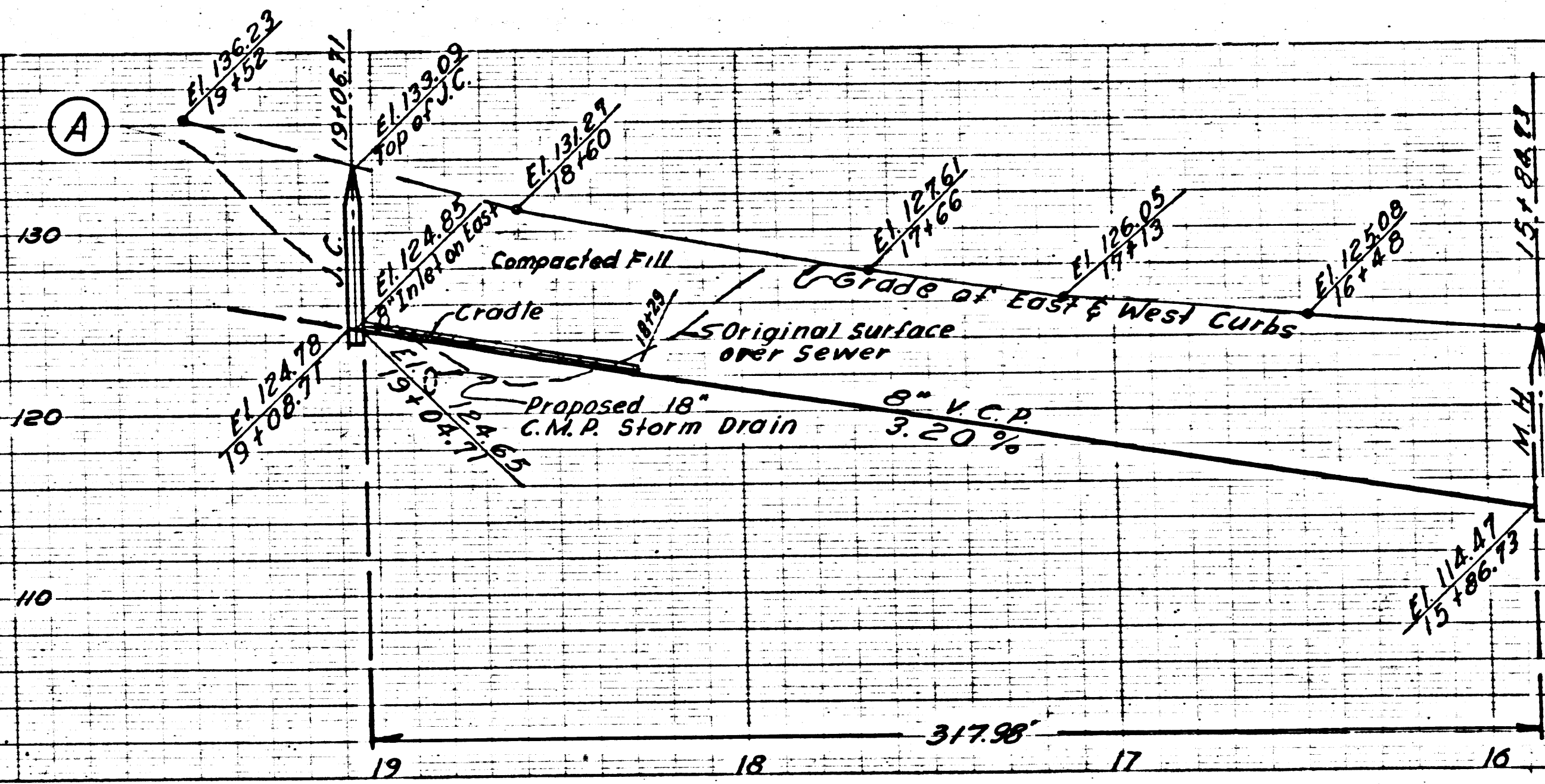


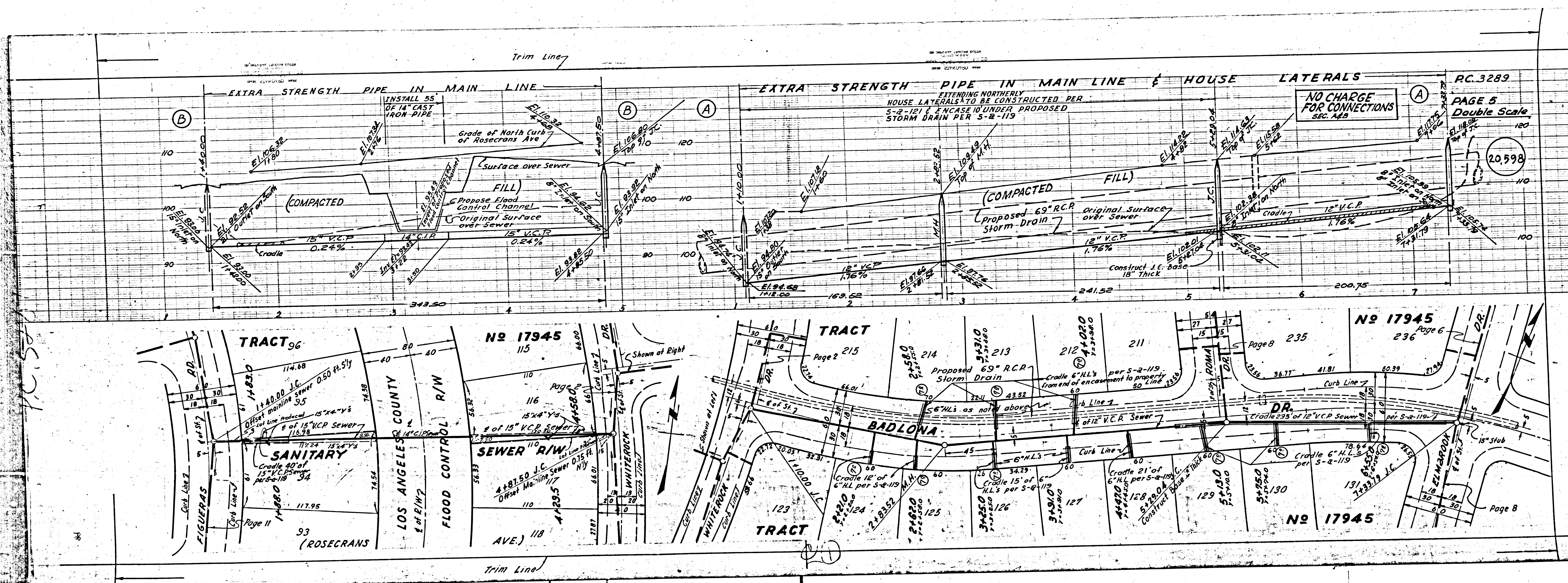
PC. 3289

PAGE 4
Double Scale

NO CHARGE FOR CONNECTIONS

20,597

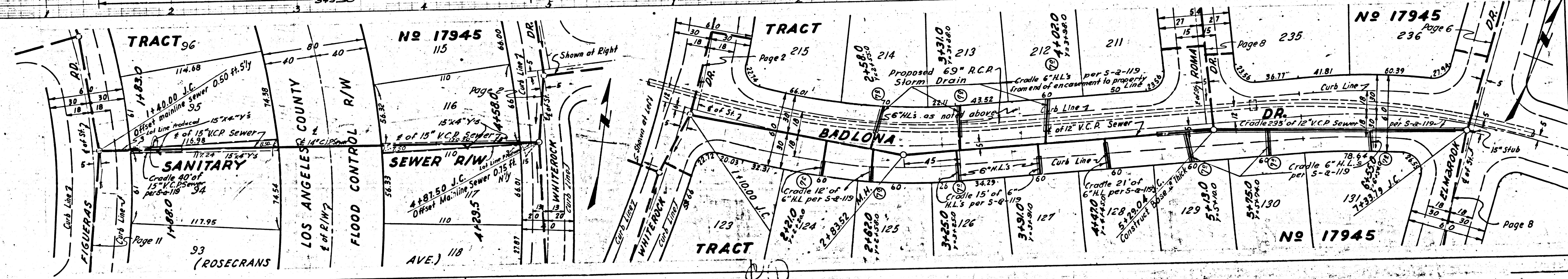




RC. 3289
PAGE 5
Double Scale

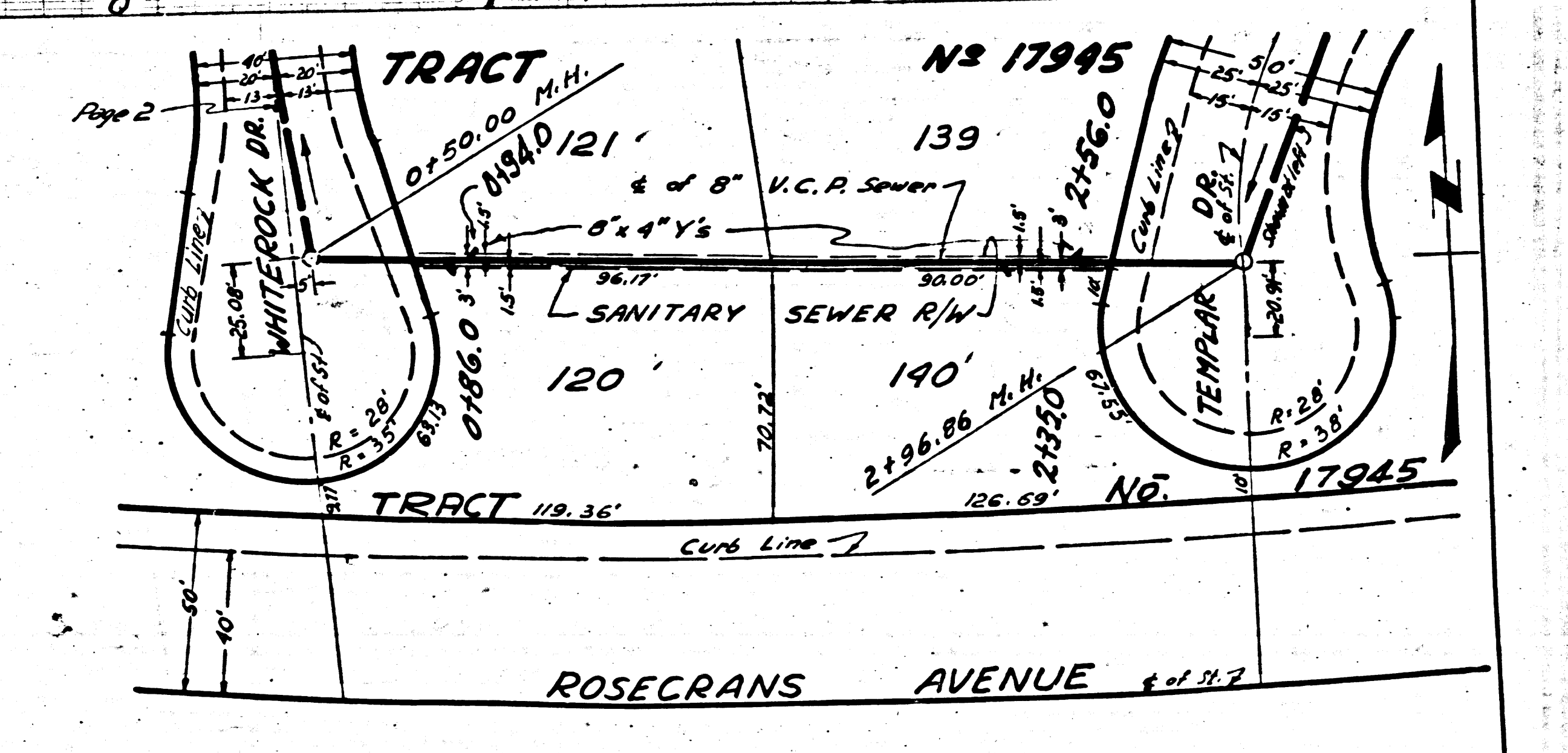
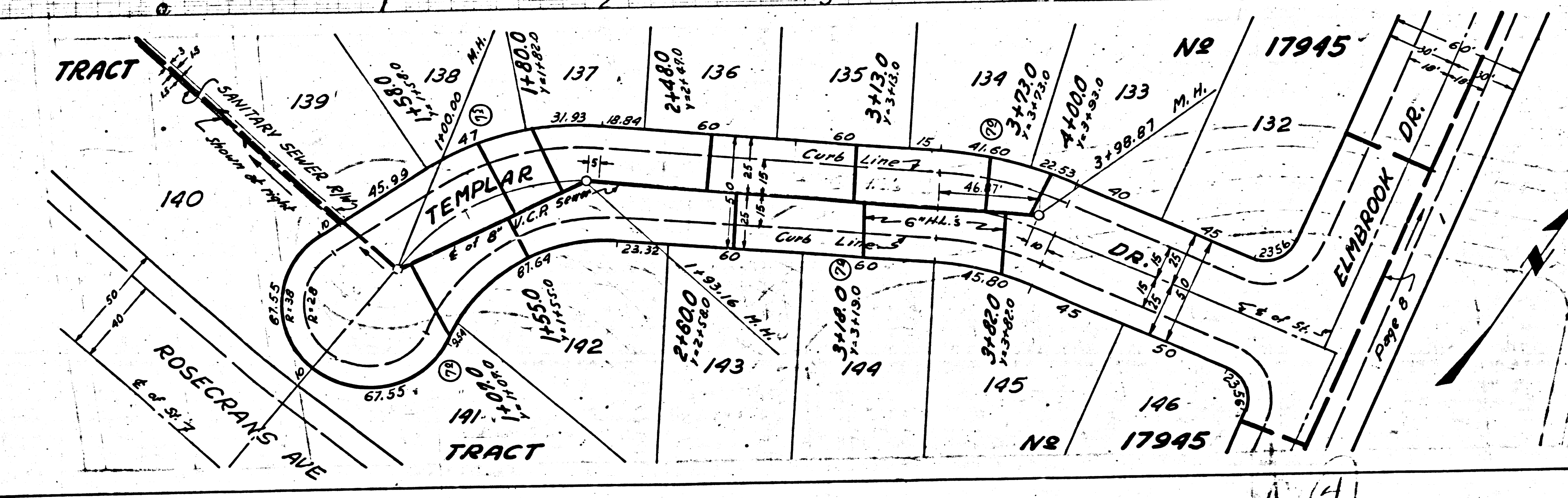
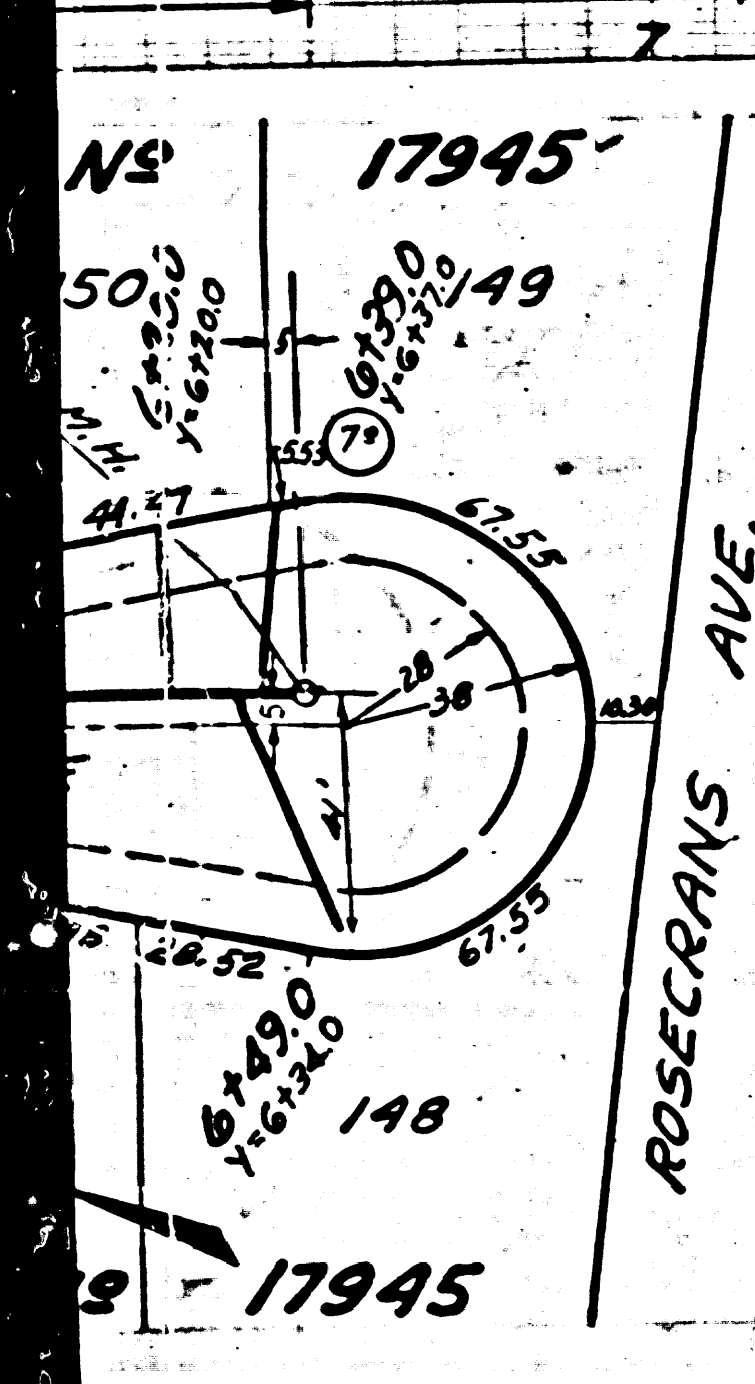
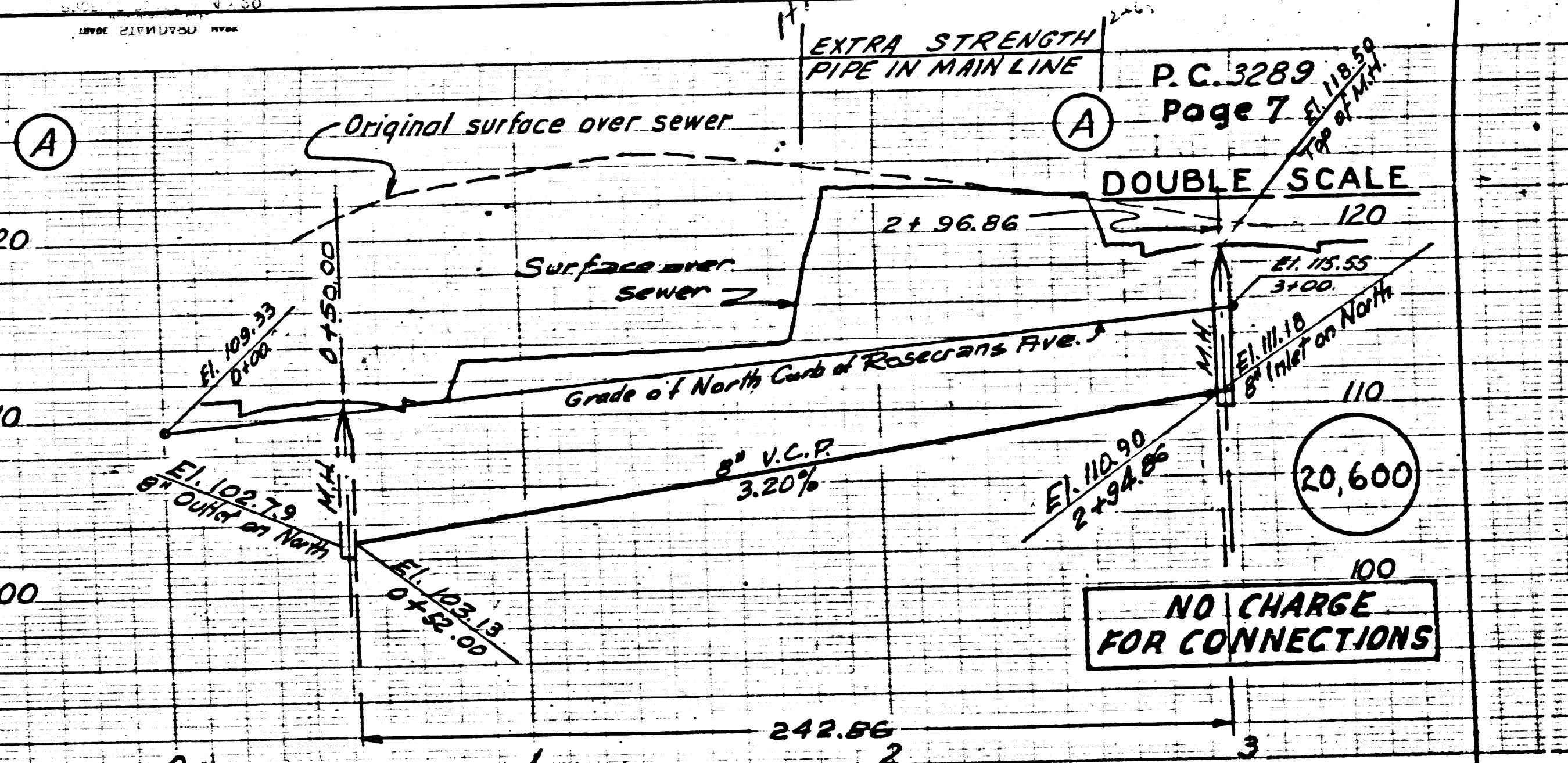
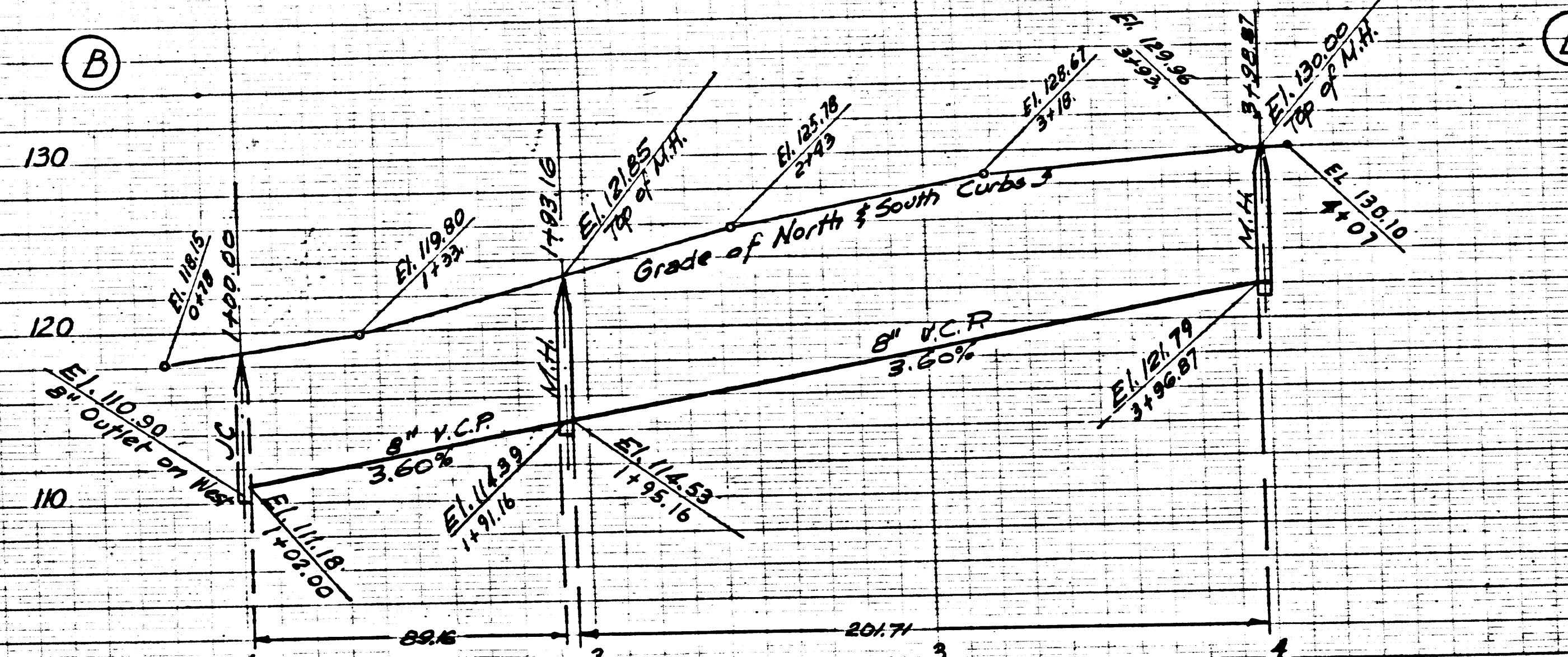
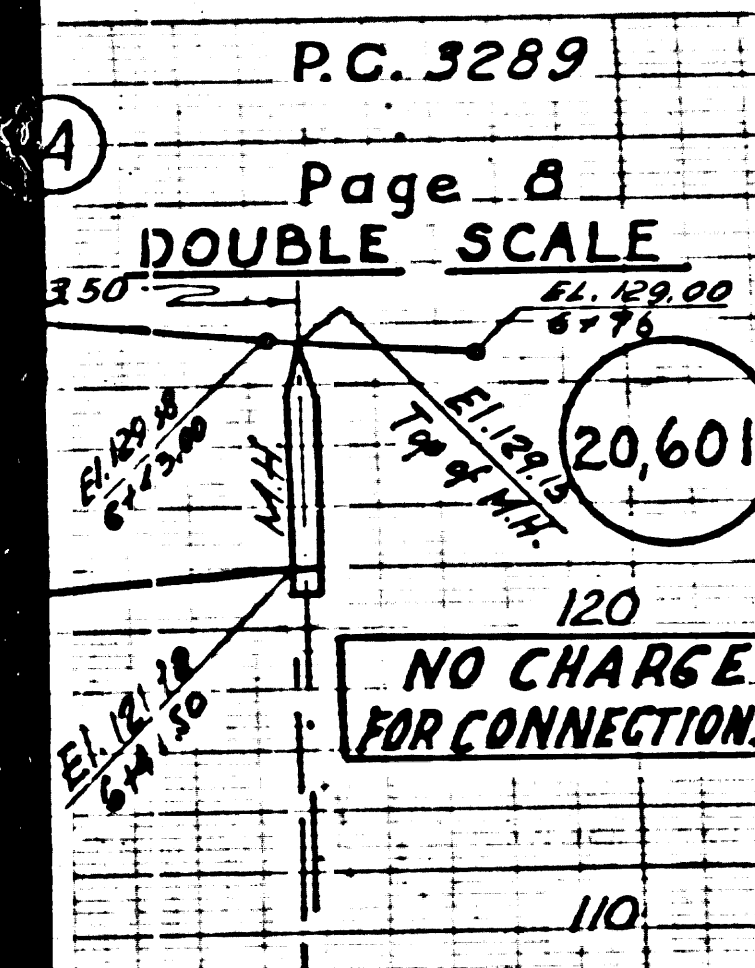
NO CHARGE FOR CONNECTIONS SEC. 422

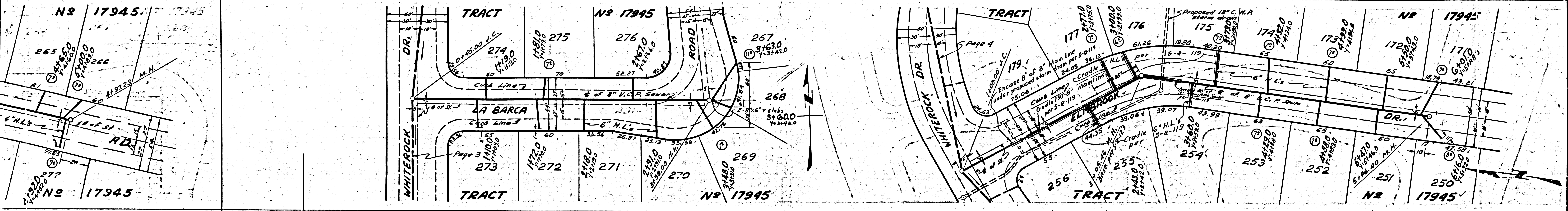
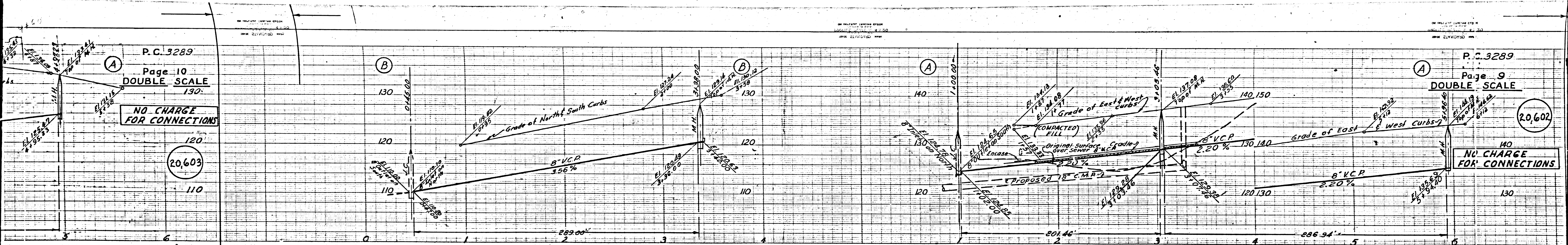
20,598

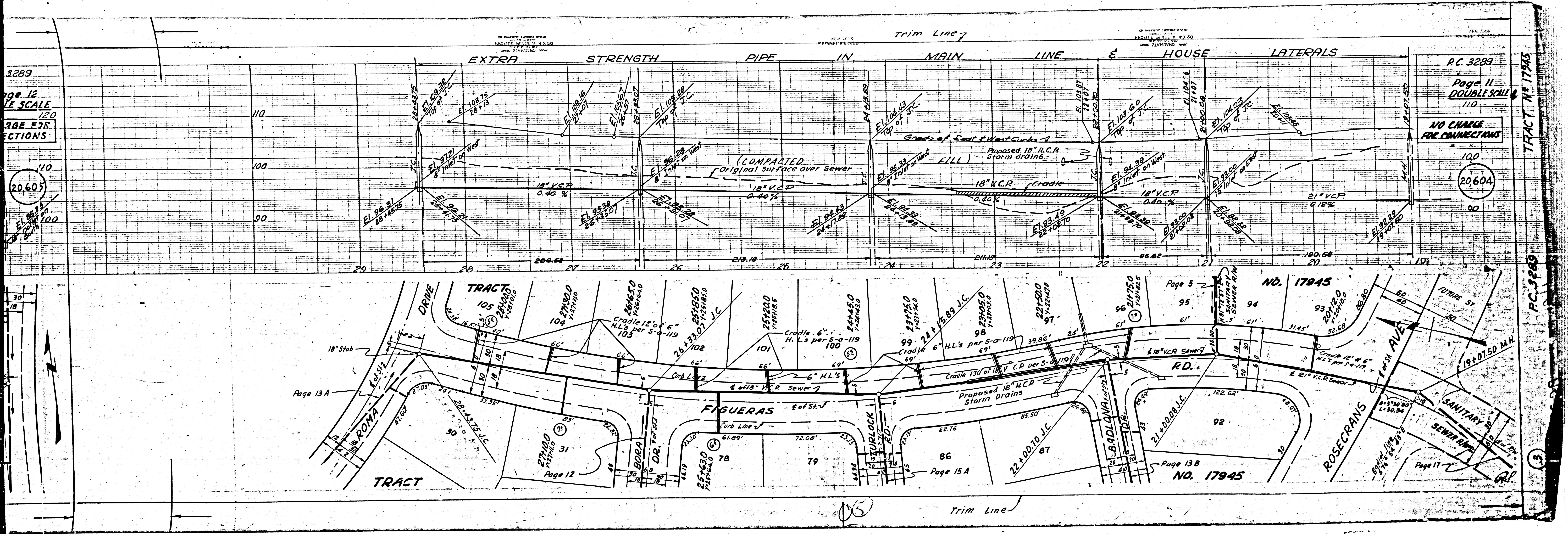


10.5

38





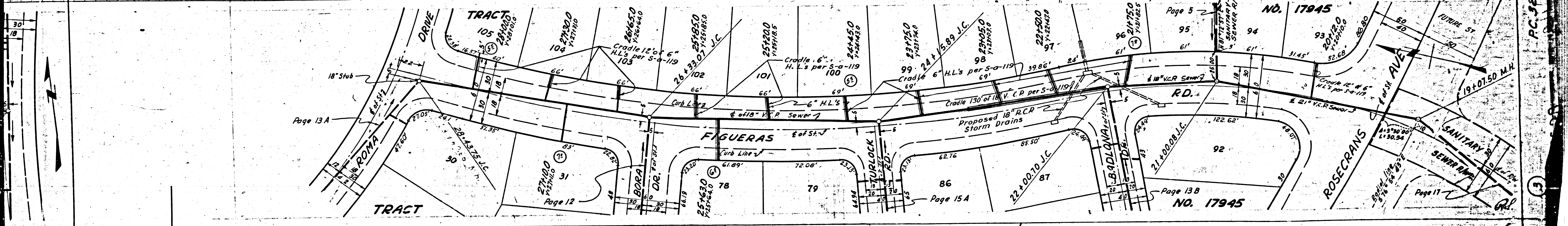


3289
 Page 12
 Double Scale
 1/20
 LARGE FOR
 CONNECTIONS

RC 3289
 Page 12
 DOUBLE SCALE
 1/20
 NO CHARGE
 FOR CONNECTIONS

TRACT N° 17945

RC 3289



Page 5
 NO. 17945

Page 13 B
 NO. 17945

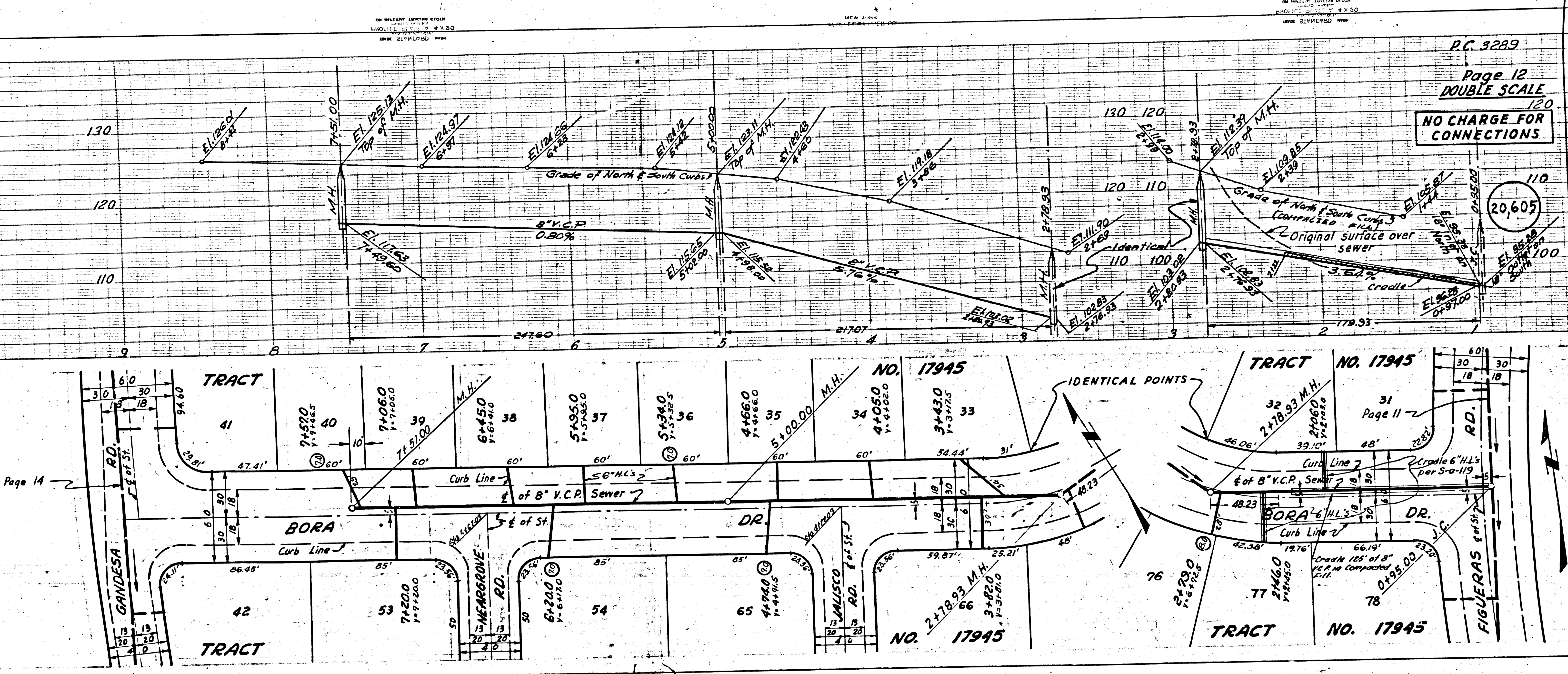
Page 11

Trim Line

C. 3289
Page 13
DOUBLE SCALE
STRAW CHARGES
INDICATED

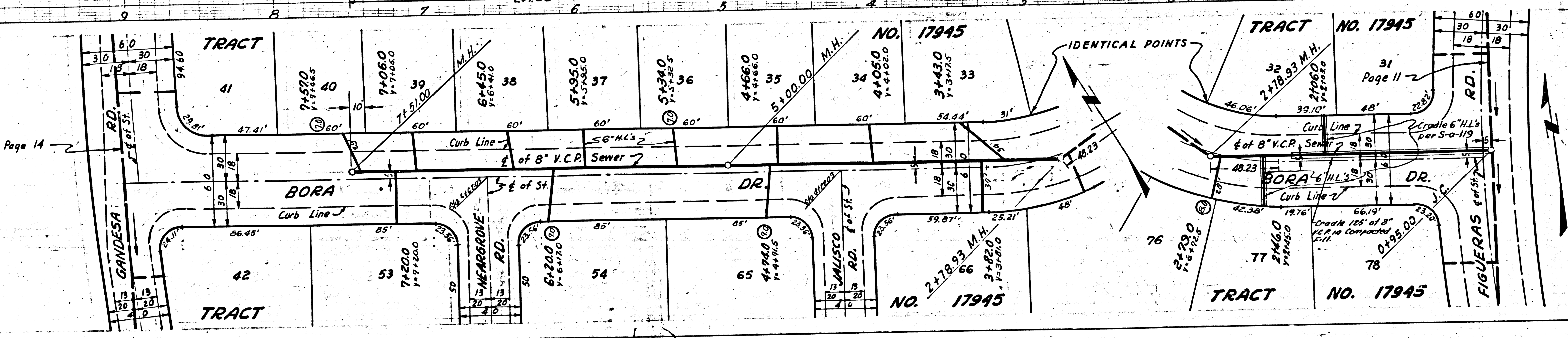
20,606

Page 11



P.C. 3289
Page 12
DOUBLE SCALE
120
NO CHARGE FOR
CONNECTIONS

20,605

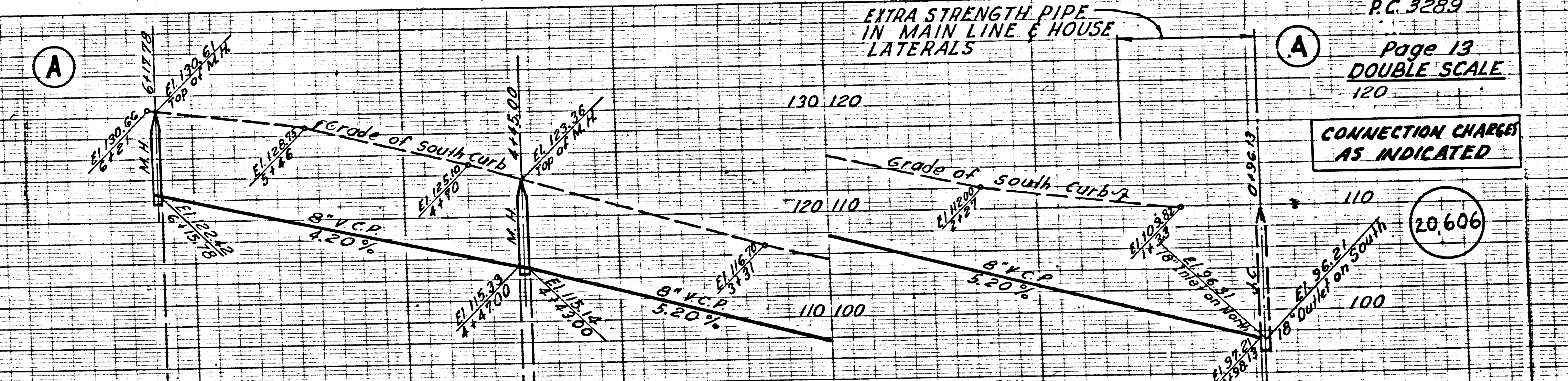
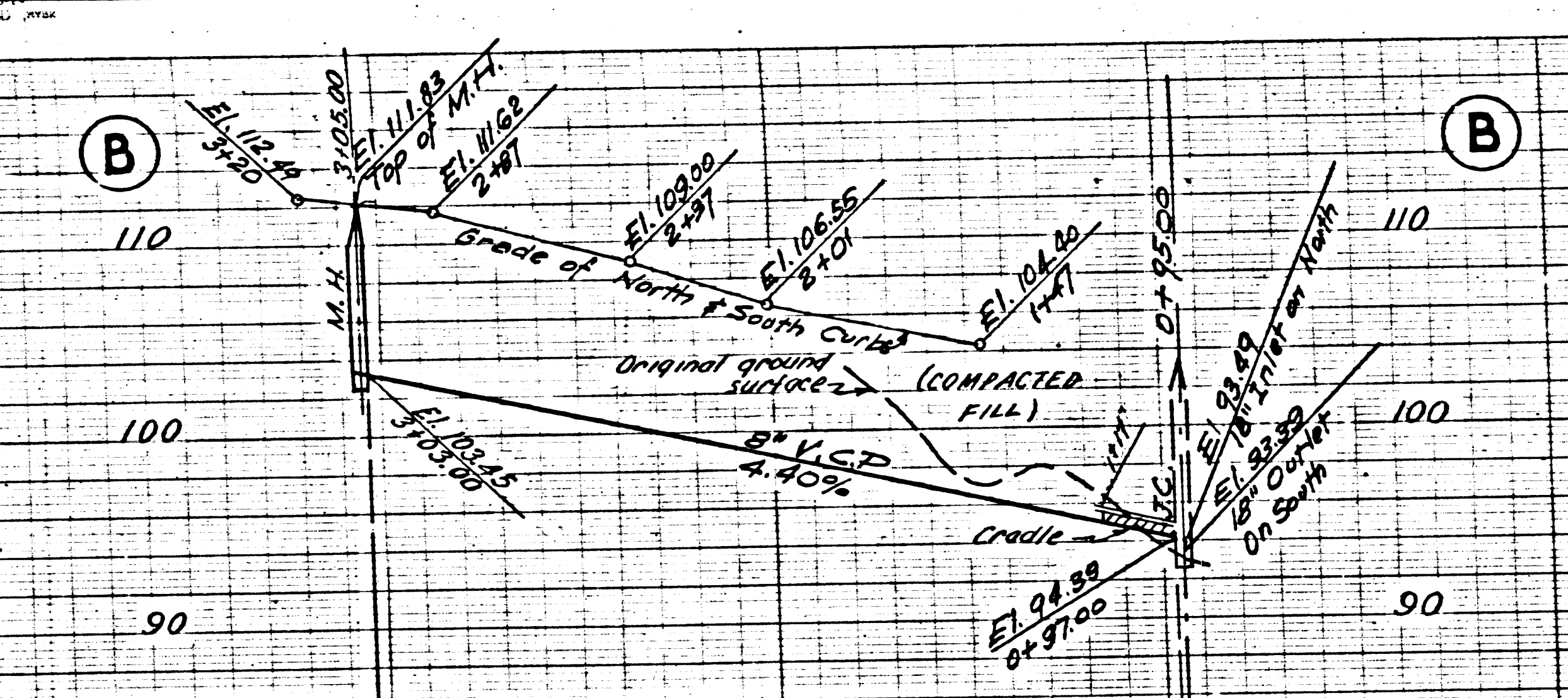


14

P.C. 3289
Page 14
DOUBLE SCALE

NO CHARGE
FOR CONNECTIONS

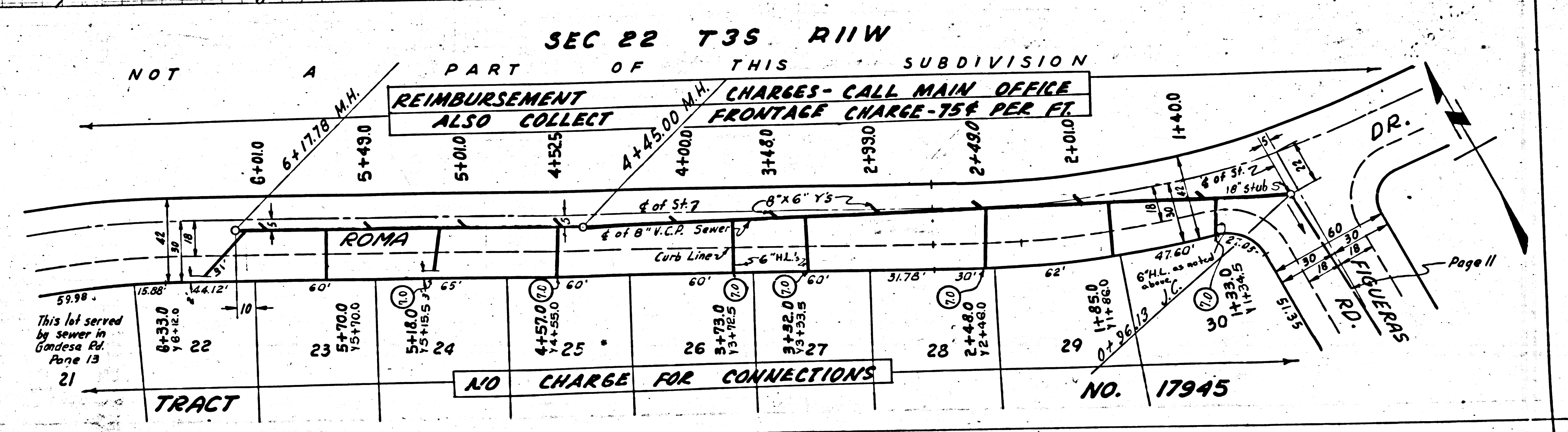
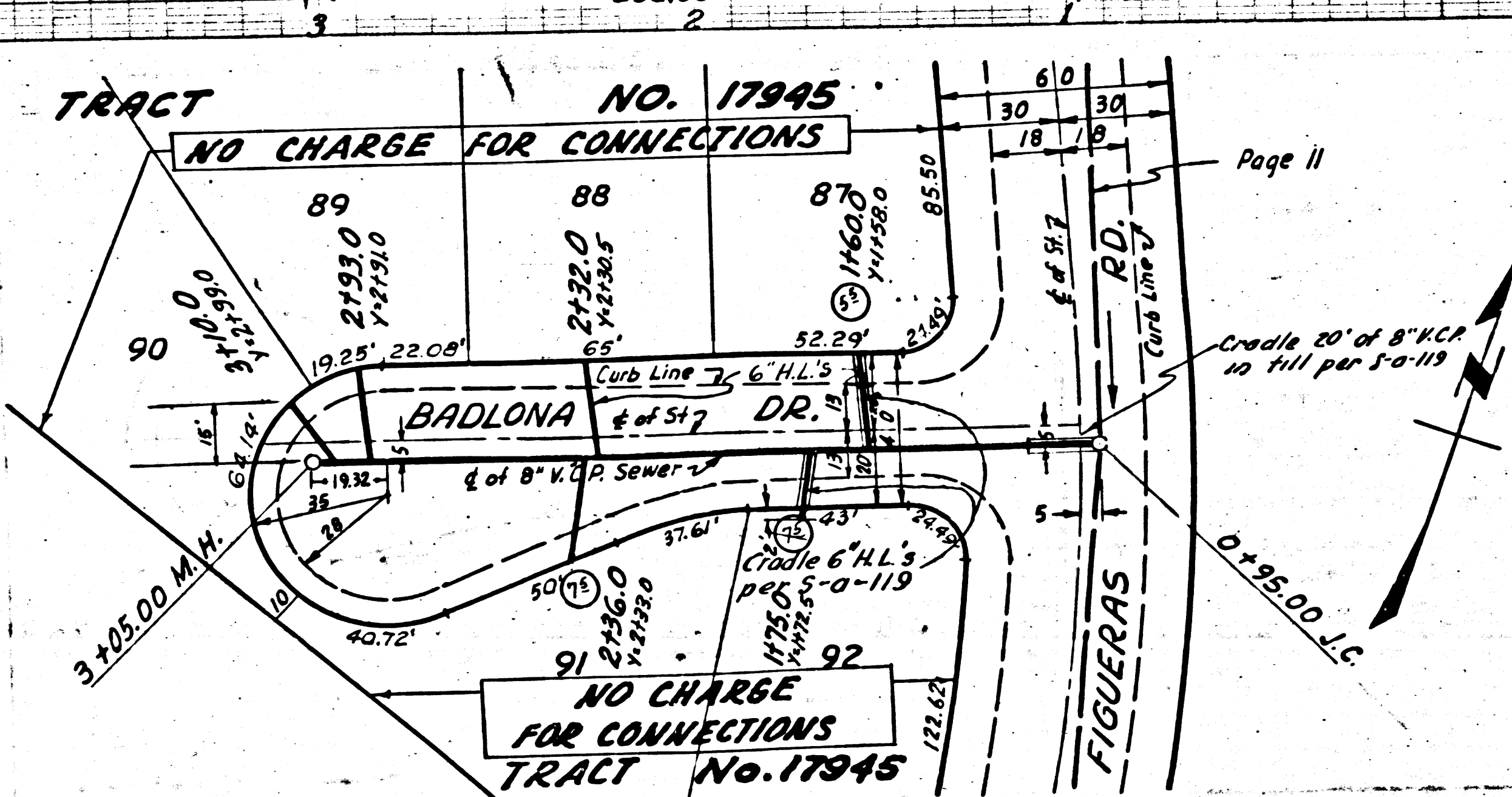
20,607



P.C. 3289
Page 13
DOUBLE SCALE

CONNECTION CHARGES
AS INDICATED

20,606



TO END (13)

P.C. 3289
Page 15
DOUBLE SCALE
110

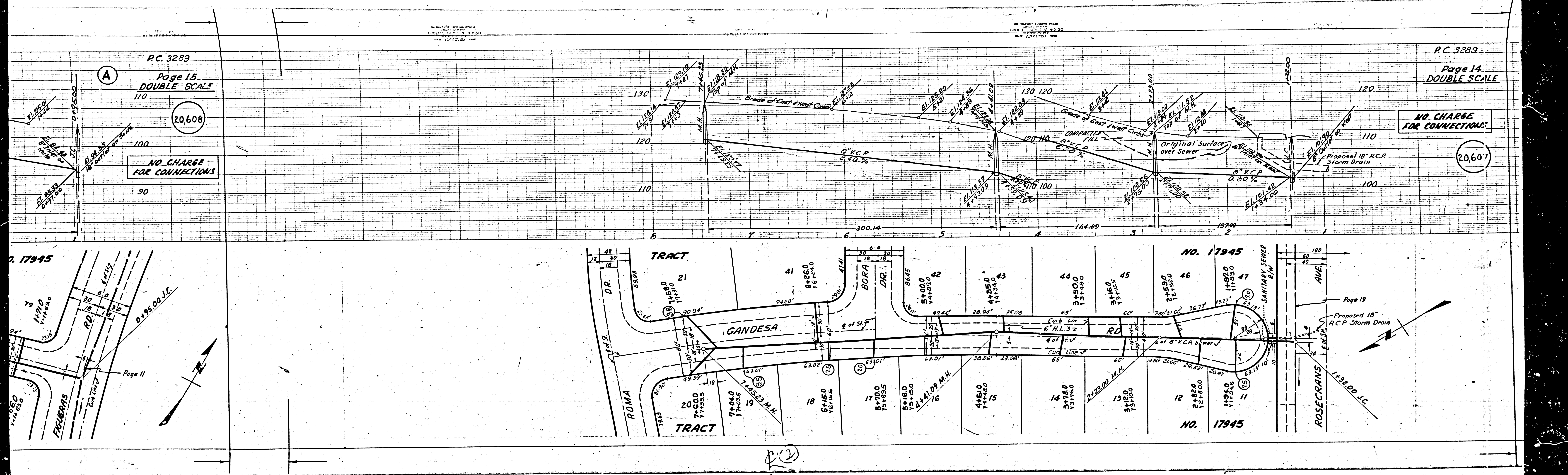
20,608

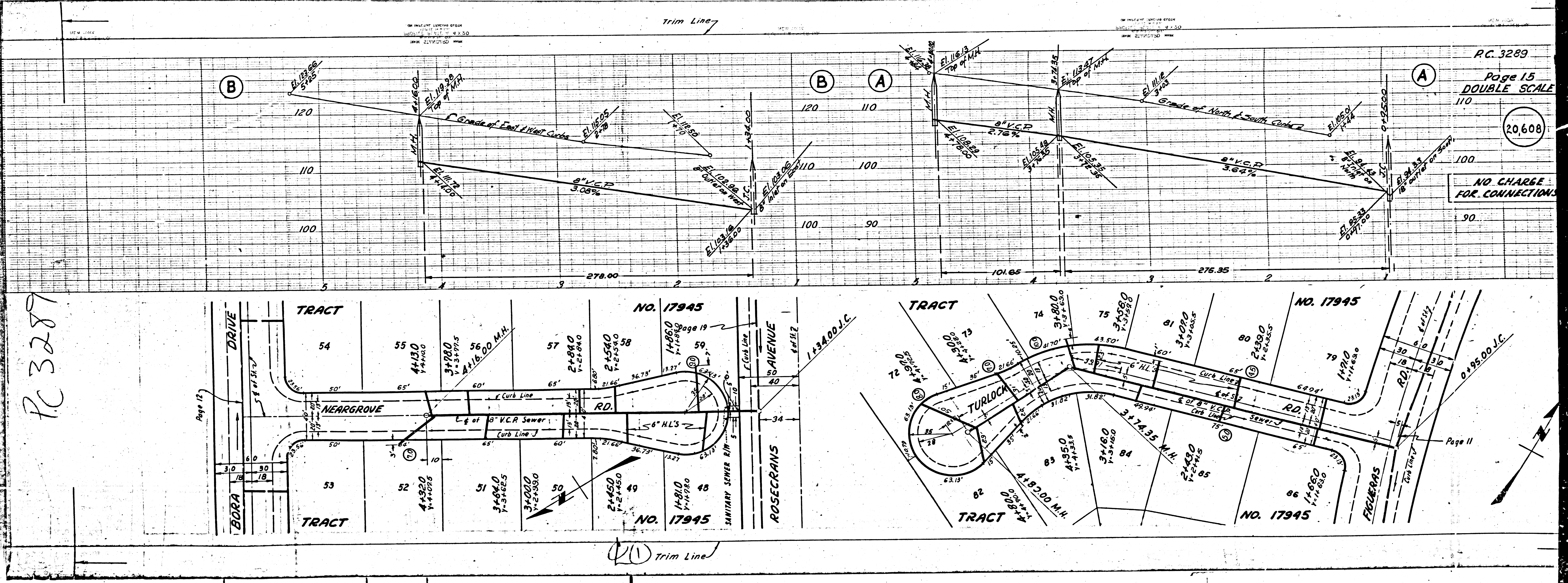
NO CHARGE
FOR CONNECTIONS

P.C. 3289
Page 14
DOUBLE SCALE

NO CHARGE
FOR CONNECTIONS

20,607





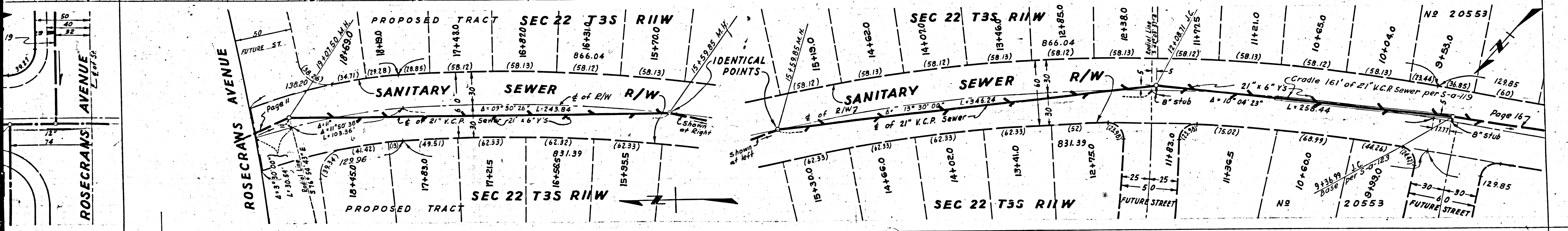
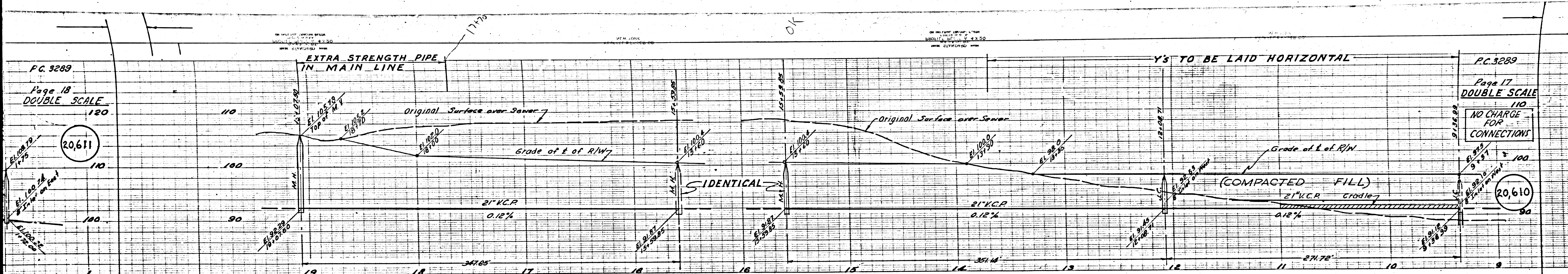
RC 3289
 Page 15
 DOUBLE SCALE
 110
 100
 90
 NO CHARGE
 FOR CONNECTIONS

RC 3289

Trim Line

P.C. 3289
Page 18
DOUBLE SCALE
120

P.C. 3289
Page 17
DOUBLE SCALE
110
NO CHARGE FOR CONNECTIONS



P.C. 3289
Page 19
DOUBLE SCALE

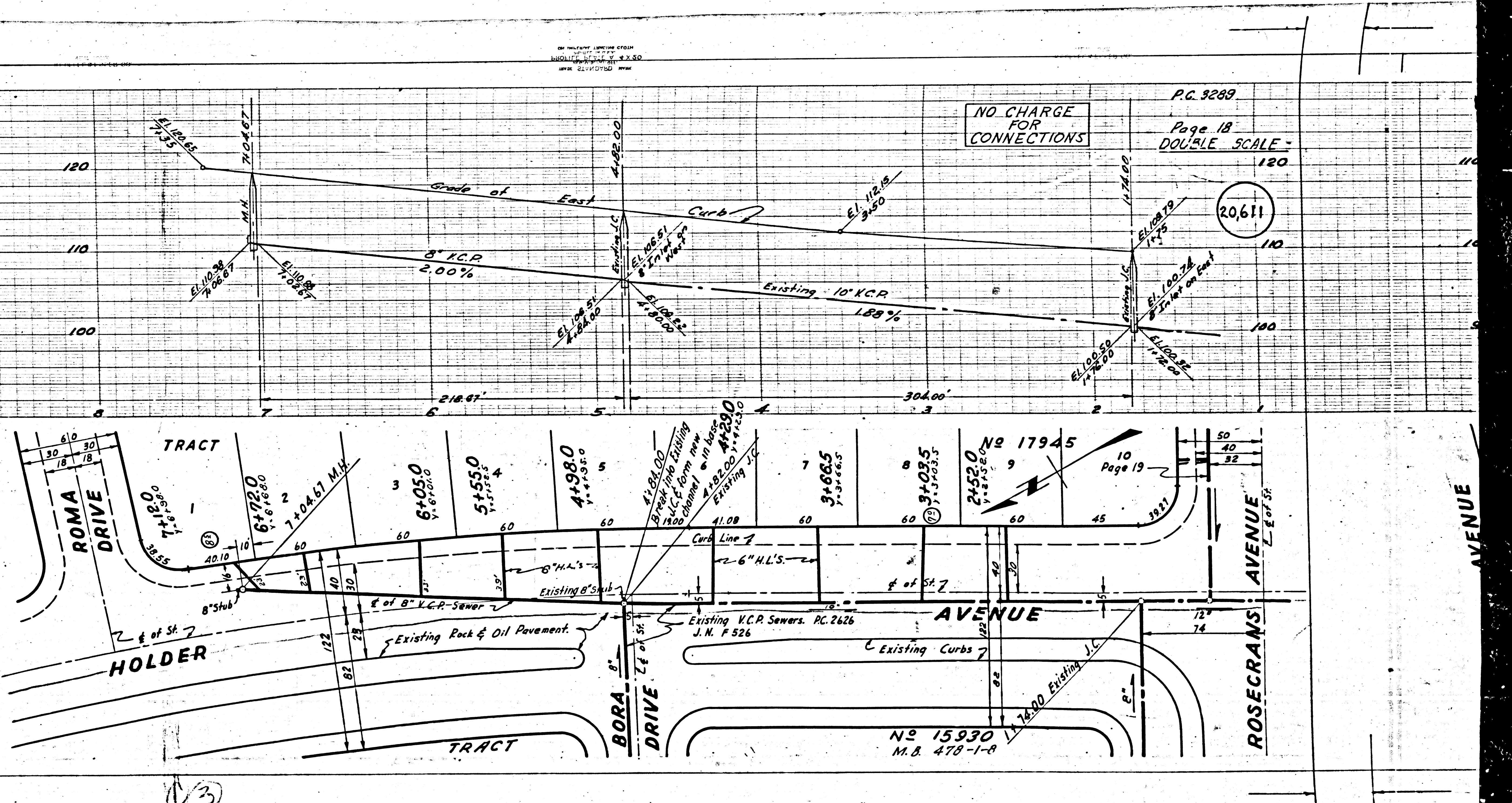
NO CHARGE
FOR
CONNECTIONS

20,612

NO CHARGE
FOR
CONNECTIONS

P.C. 3289
Page 18
DOUBLE SCALE

20,611



P.C. 3289
Page 20
DOUBLE SCALE

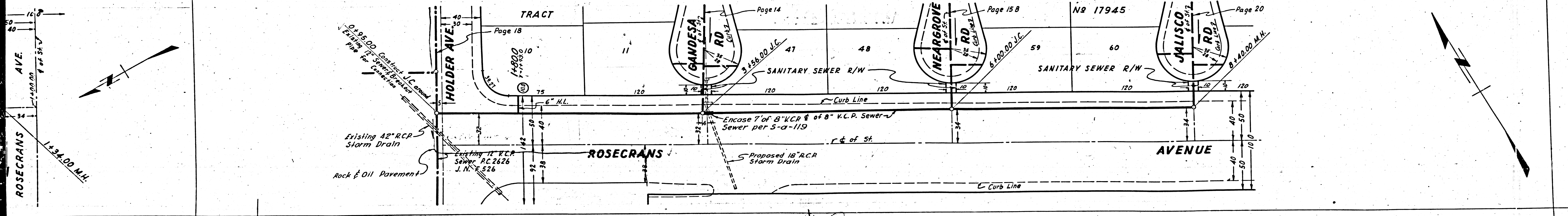
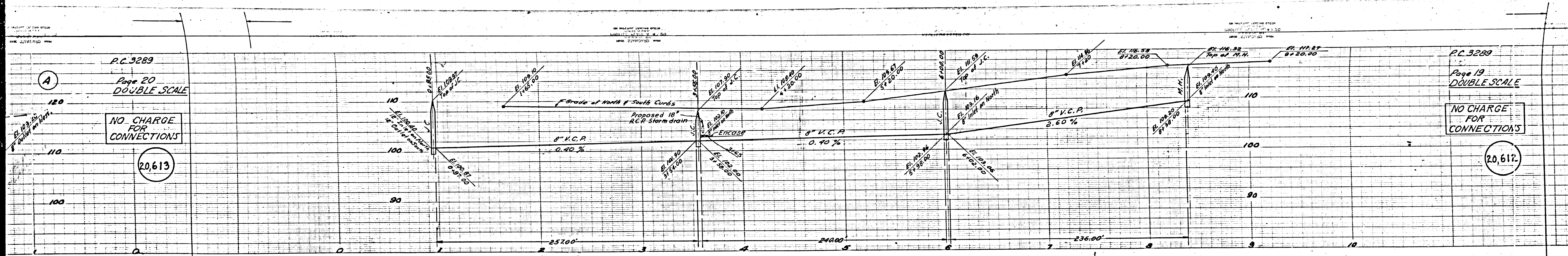
NO CHARGE
FOR
CONNECTIONS

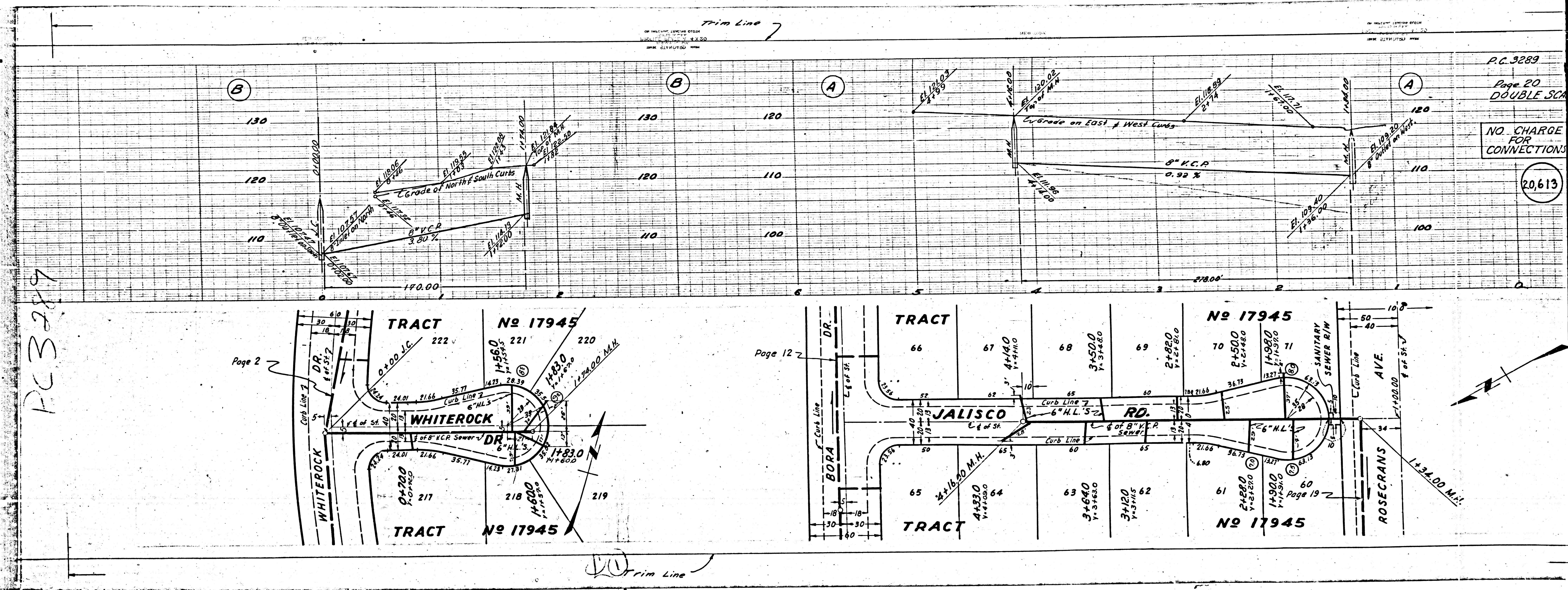
20,613

P.C. 3289
Page 19
DOUBLE SCALE

NO CHARGE
FOR
CONNECTIONS

20,612





P.C. 3289
 Page 20
 DOUBLE SHEET
 NO. CHARGE FOR CONNECTIONS
 20,613

PC 3289

Trim Line