

Trim Line 7
PUEBLO BUILDING DIST. No 2

NOTE:
 Provide stakes on the property lines or property lines produced at right angles to the sewer line at the center line of each manhole.
 No representative of the County Engineer will survey or layout any portion of the work.
 The owner or his authorized representative shall furnish the County Engineer with grade sheets and stations for all house laterals and Y branches and shall provide stakes for them at their proper locations with stationing plainly marked. Any change in location shall be requested in writing by the owner or his representative.
 No revisions shall be made in these plans without the approval of the County Engineer.

1. Use standard manhole frames and covers, S-a-117.
2. Use standard strength pipe except as noted.
3. Use cement mortar for all vitrified clay pipe joints.
4. Resurface all trench within paved area to meet L.A. County Road Dept. or California State Highway Dept. requirements in accordance with permit.
5. Encase four feet of sewer at points of interference with poles, S-a-119.
6. House laterals to be constructed with inverts at property line _____ feet below curb grade.
7. All structures shall be brick sewer structures, S-a-104.
8. For allowable leakage test, use Formula No. 1, Specs., Sec. 51.
9. Manhole tops in unimproved Rights-Of-Way to be 6" above finish grade.

SHEET NO.	PAGES
1	1-5

CONNECTION CHARGES AS INDICATED
 L. Curtis 1-10-55

Revision on Pages 2, 3, 4
 APPROVED:
 J. V. Ouda 3-17-55
 Office of County Engineer R.E. 9406

PROFILE, ALIGNMENT AND GRADE OF
SANITARY SEWERS
 TO BE CONSTRUCTED IN
TRACT No 20628

PRIVATE CONTRACT NO. 3290
 W. S. 38
ONE SHEET
 Scale: VERT. 1"=4'
 HORIZ. 1"=40' NOVEMBER, 1954

PREPARED UNDER THE SUPERVISION OF
 Henry Jones
 Reg. C. E. No. 4484
 FOR LEGEND SEE PLAN NO. S-a-64

NOTE:
 Grades to which this improvement is to be constructed are shown on plans and profiles. Grade points for top of curbs, center line of streets, or center line of alleys are shown by circles on profiles. At all points between designated points the grade shall be established so as to conform to a straight line drawn between said designated points.
 Elevations are in feet above U.S.G.S. datum or mean sea level.
 This drawing and the data hereon are hereby made a part of the specifications.
 Work shall be constructed according to specifications on file in the office of the County Engineer and shall be prosecuted only in the presence of the County Engineer.
 Before work can be started, the contractor must obtain a permit to excavate in County streets from the L.A. County Road Dept., 108 W. 2nd St. and make a deposit with the County Engineer, 733 L.A. County Engineering Building, sufficient to cover the cost of construction inspection and record plans.
 Approval of this plan by the County of Los Angeles does not constitute a representation as to the accuracy of the location of or the existence or non-existence of any underground utility, pipe, or structure within the limits of this project. This note applies to all sheets.
 If work is to be done in a State Highway, a permit must be obtained from the State of California, Division of Highways, 120 South Spring Street.

COUNTY OF LOS ANGELES, CALIFORNIA
 Approved, William J. Fox, County Engineer
 Approved, A. M. Rawm
 CHIEF ENGINEER SAN DIST. NO. 15
 A. P. Collins
 S. J. Matthews
 Sanitation Engineer Office Engineer
 Checked by P. P. Fisher 2-3-55
 Office of County Engineer, Reg. C. E. No. 7860

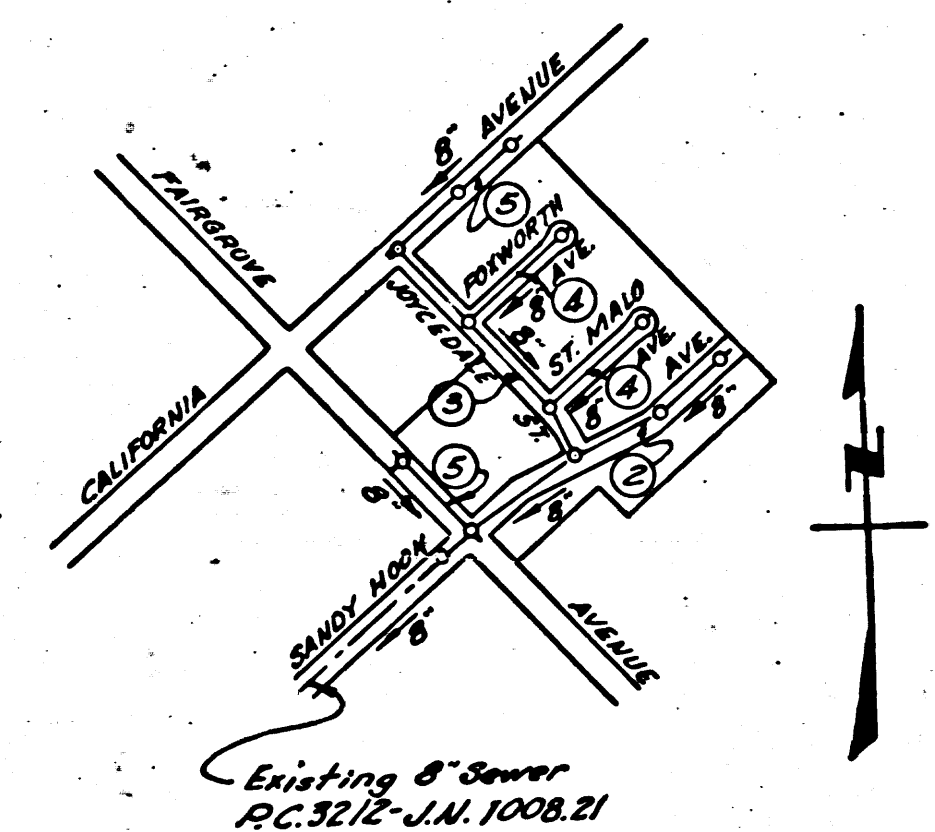
PC. 3290
 PAGE 1

20,068

TRACT No 20628

PC. 3290

B.M. S.G. 1010 E.I. 338.098 Lead & bench nail in N.E. corner of conc. 3x5 weir box @ S.W. corner of Fairgrove & Utrich 325.5 of e. Fairgrove & 1.45' W of e. Glendora



INDEX MAP
 SCALE: 1"=600'
 TRACT No 20628
 PC. 3290

Checked 4-8-55 M. K. ...

3290

CHARGE OR SECTION'S

20,069

Initial 5/16/54 0.72 72

8" V.C.P. 100' - 12" 12" U 100021

8" V.C.P. 100' - 12" 12" U 100021

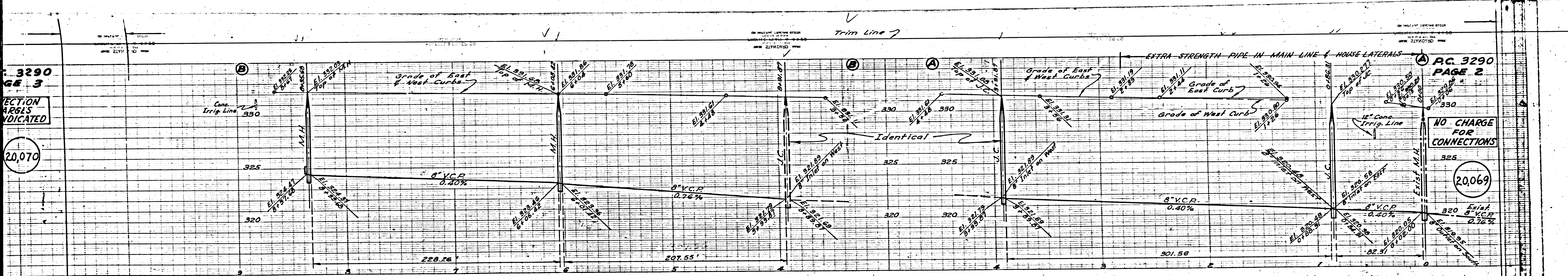
Trim Line 7 (15)

Page 3/3

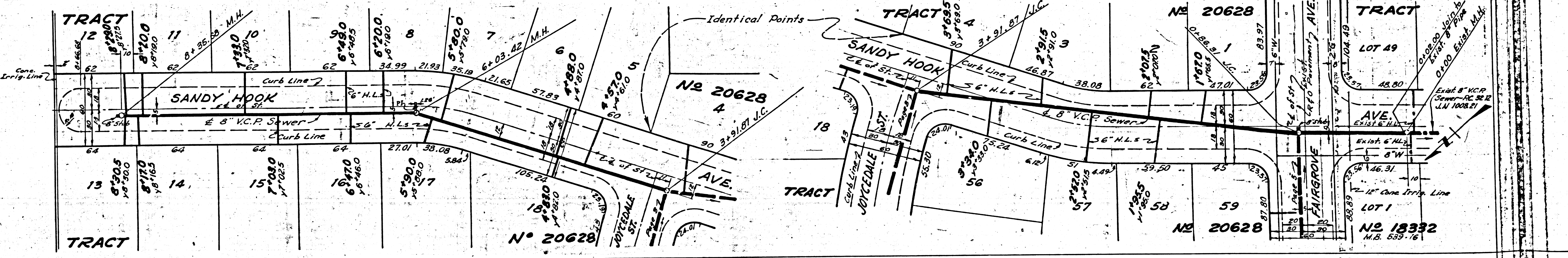
3. P.S.

PC 3290
PAGE 3
SECTION
18615
INDICATED

20,070



PC 3290
PAGE 2
NO CHARGE
FOR
CONNECTIONS
20,069



Checked 4-8-55

P.C. 3290
PAGE 4

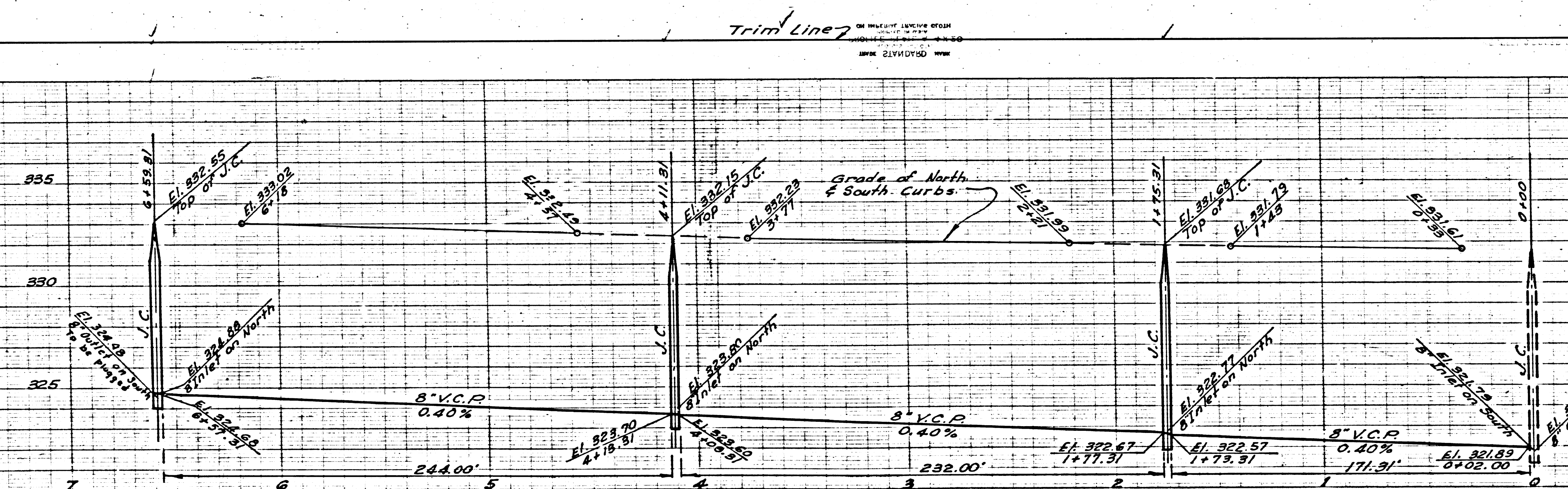
NO CHARGE FOR CONNECTIONS

20,071

P.C. 3290
PAGE 3

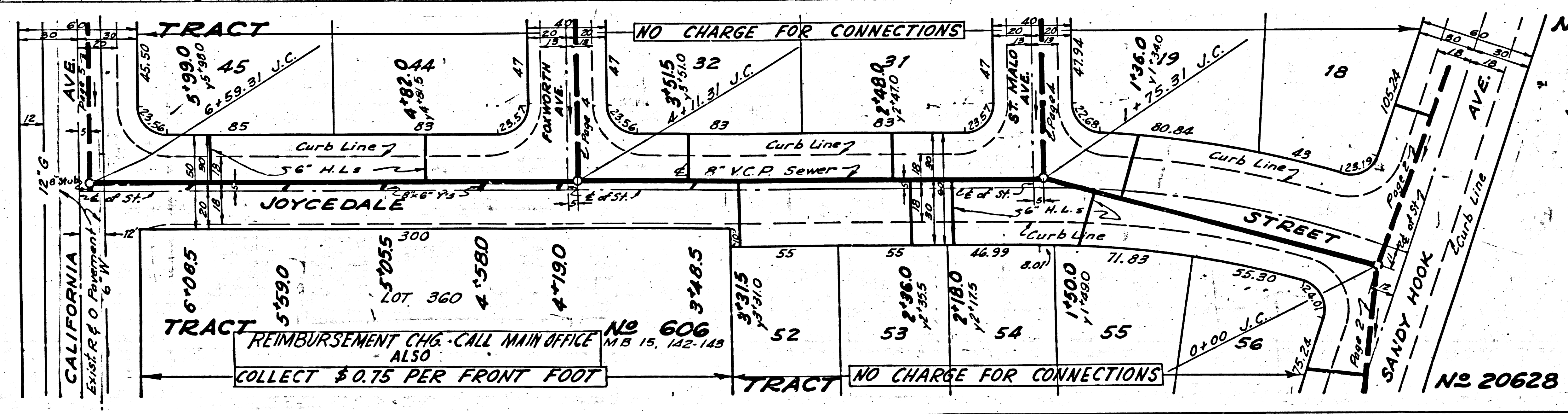
CONNECTION CHARGES AS INDICATED

20,070



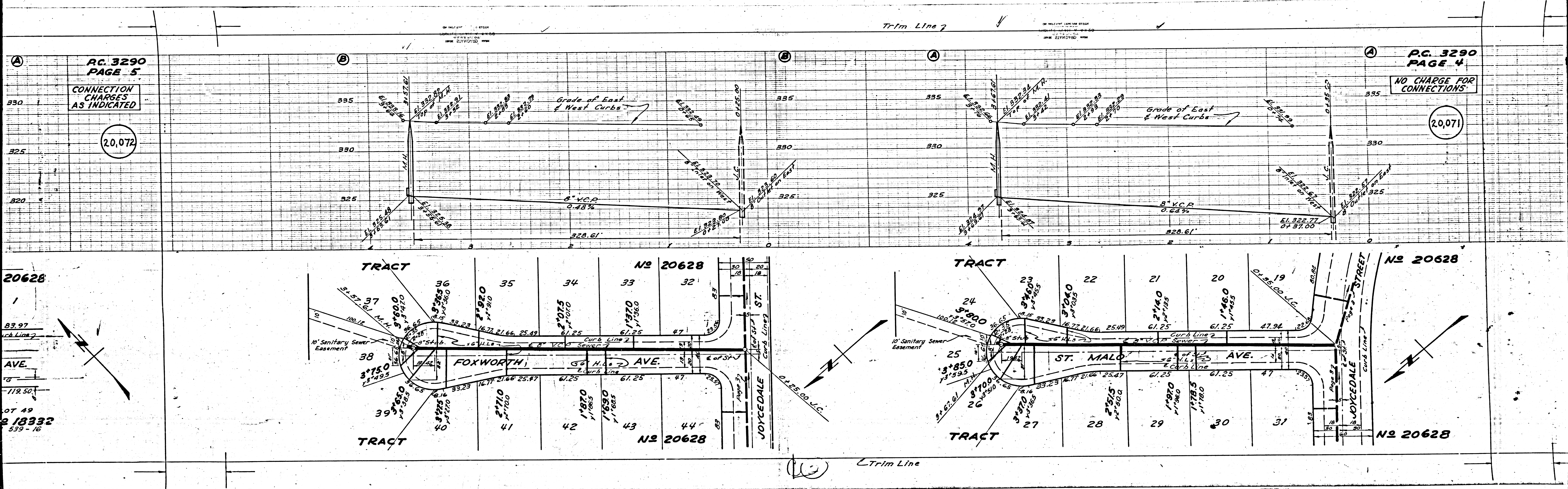
20628

20628



No 20628

No 20628



PC. 3290
PAGE 5

CONNECTION
CHARGES
AS INDICATED

(20,072)

PC. 3290
PAGE 4

NO CHARGE FOR
CONNECTIONS

(20,071)

20628

89.97

AVE.

112.50

OT 49

18332

539-16

TRACT

NO 20628

TRACT

NO 20628

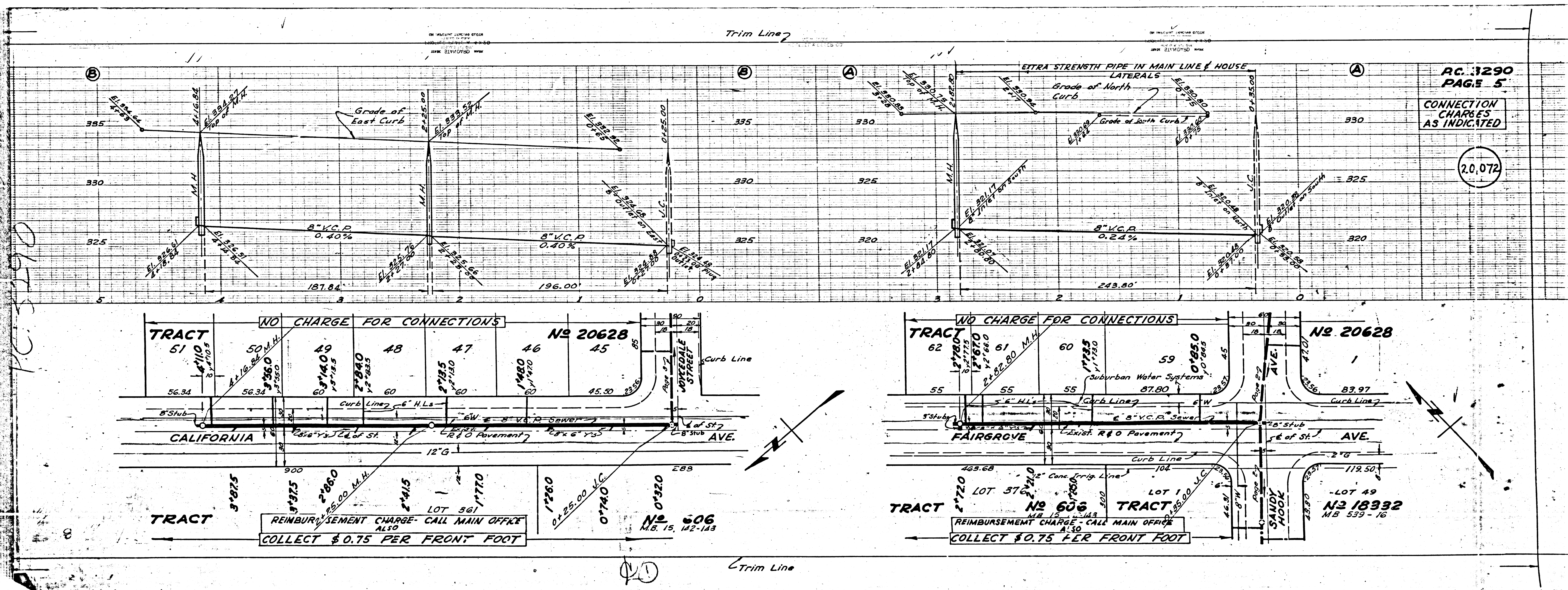
TRACT

NO 20628

TRACT

NO 20628

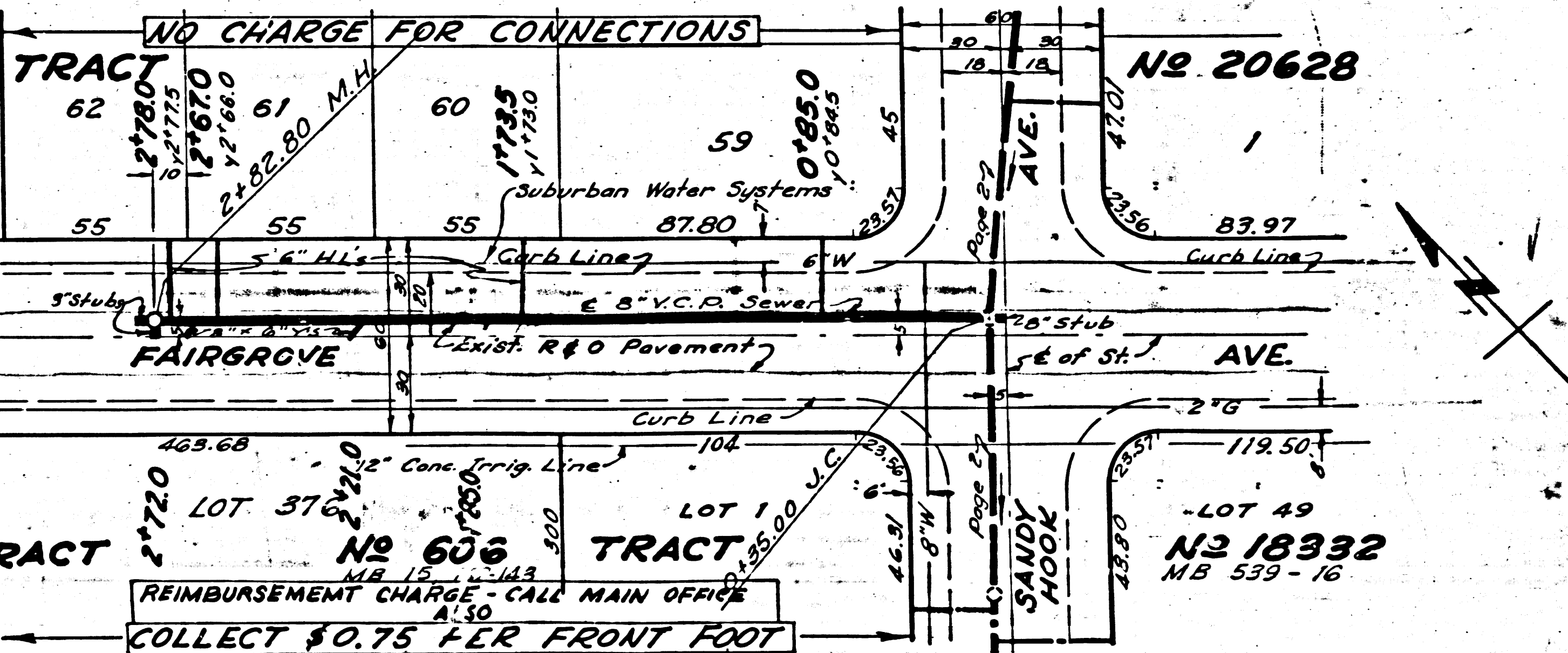
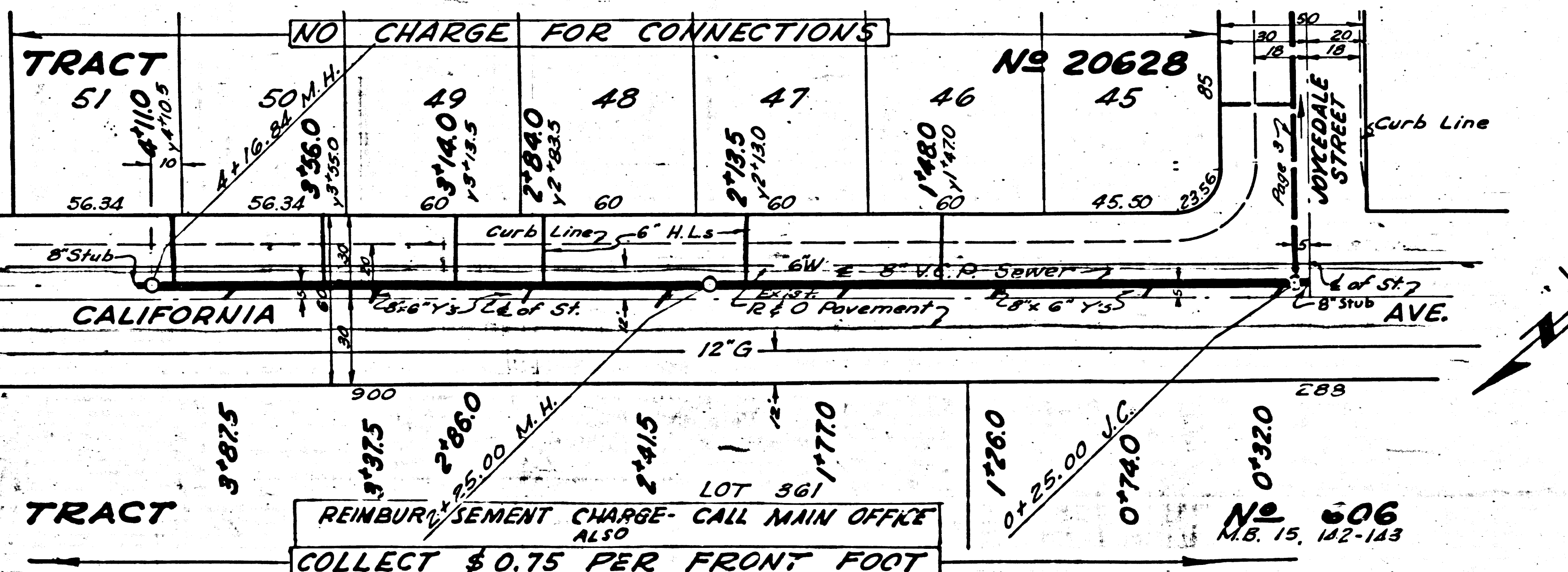
Trim Line



AC 1290
PAGE 5

CONNECTION
CHARGES
AS INDICATED

2.0,072



AC 1290

Trim Line