

3292

E 2

FOR
ONMS

0.530

C.2883

Page Trim Line

B.M. S.G. 1046, Page 430
 Spike & lead in S.E. Cor. of conc.
 foundation of S.A.R.R. crossing approx. 95' W
 of E of Hacienda Blvd. and N. 8321th
 of N railroad line Valley Blvd. xing in
 Puente. Elev. 323.450

NOTE: PUENTE BLDG. DIST. No. 2
 Provide stakes on the property lines or property lines produced at right angles
 to the sewer line at the center line of each manhole.
 No representative of the County Engineer will survey or lay out
 any portion of the work.
 The owner or his authorized representative shall furnish the county
 engineer with grade sheets and stations for all house laterals and
 Y-branches and shall provide stakes for them at their proper locations
 with stationing plainly marked. Any change in location shall be requested
 in writing by the owner or his representative. No revisions shall be
 made in these plans without approval of the County Engineer.

1. Use standard manhole frames and covers, S-a-117, except as noted.
2. Use standard strength pipe, except as noted.
3. Use cement mortar for all vitrified clay pipe joints.
4. Re-surface all trench within paved area to meet L.A. County Road Dept.
or Calif. State Hwy. Dept. requirements in accordance with permit.
5. Encase four feet of sewer at points of interference with poles, S-a-119.
6. House laterals to be constructed with inverts of properly line
6 feet below curb grade, except as noted.
7. All structures shall be brick sewer structures, S-a-104, except as noted.
8. For allowable leakage test, use formula No. 1, Specs. Sec. 51.
9. Manhole tops in unimproved rights-of-way to be 6' above finished grade.

**PROFILE ALIGNMENT AND GRADE OF
 SANITARY SEWERS**
 TO BE CONSTRUCTED IN
TRACT NO. 15239

PRIVATE CONTRACT NO. 3292
 W.S. 38
SHEET 1 OF 2 SHEETS

SCALE: Vert. 1"=40'
 Horiz. 1"=40'
 DECEMBER 1954

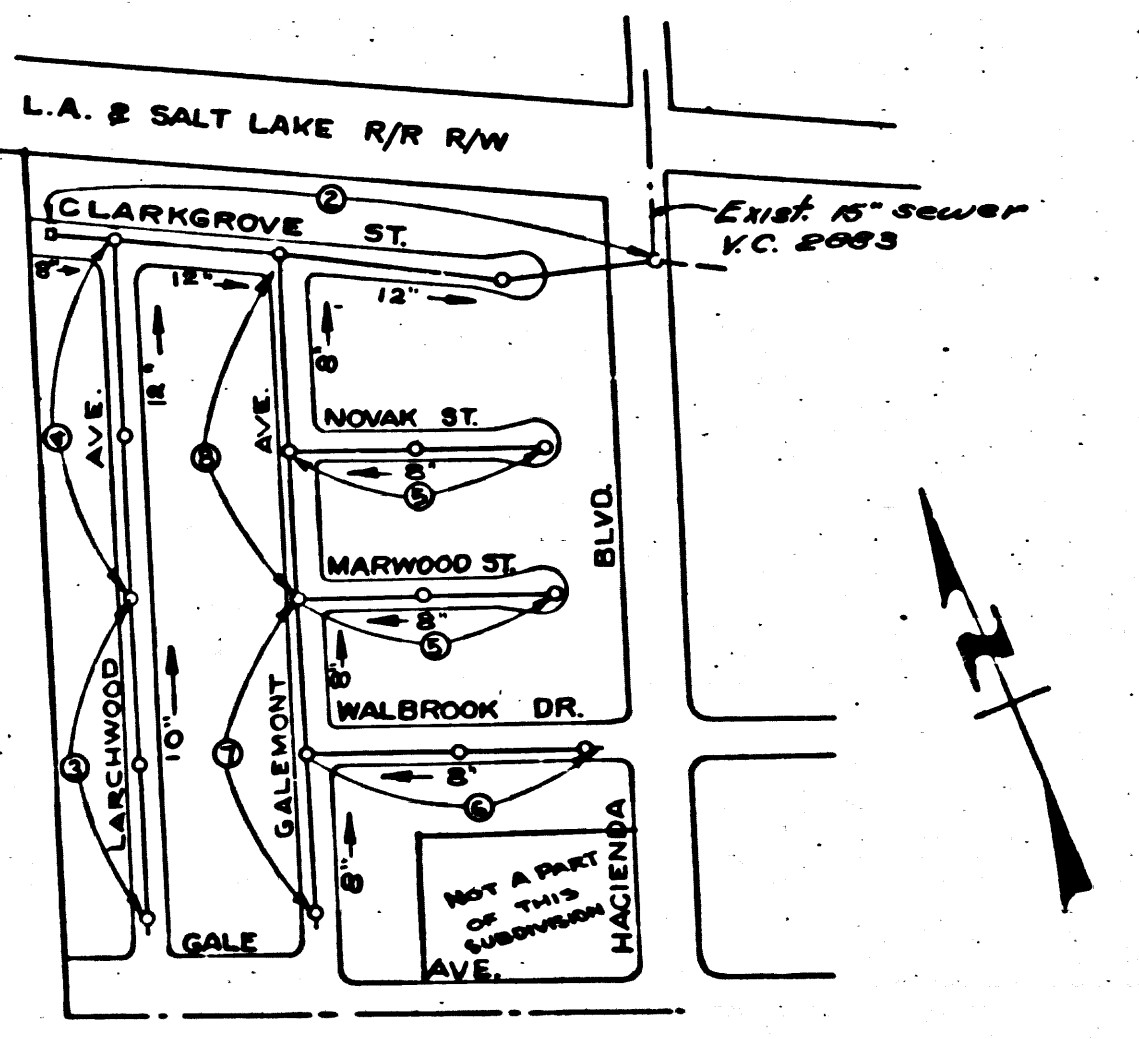
Prepared in the offices
 of National Engineering &
 Surveying Service Co.
 By Edward J. Egan
 Reg. C.E. No. 5923

FOR LEGEND SEE PLAN NO. S-a-64

NOTE:
 Grades to which this improvement is to be constructed are shown on plans and profiles.
 Grade points for top of curbs center line of street or center line of alley are shown
 by circles on profiles. At all points between designed points the grade shall be
 established so as to conform to a straight line drawn between said designated points.
 Elevations are in feet above U.S.G.S. datum or mean sea level. This drawing and the data
 hereon are hereby made a part of the specifications. Work shall be constructed according
 to specifications on file in the office of the County Engineer and shall be prosecuted
 only in the presence of the County Engineer.
 Before work can be started, the contractor must obtain a permit to excavate in
 county streets from the L.A. County Road Dept. 109 W. 5th St. and make a deposit
 with the County Engineer, 733 L.A. Co. Engr. Bldg., sufficient to cover the cost of
 construction, inspection and record plans.
 Approval of this plan by the County of Los Angeles does not constitute a
 representation as to the accuracy of the location of, or the existence or non-existence
 of any underground utility pipe or structure within the limits of this project.
 (This note applies to all sheets.)
 If work is to be done on a state highway a permit must be obtained from the
 State of Calif. Division of Highways, 120 South Spring St.

COUNTY OF LOS ANGELES, CALIFORNIA
 APPROVED, WILLIAM J. FOX, COUNTY ENGINEER - APPROVED, A.M. RAWIN, CHIEF ENGR. CO. SAN. DIST. NO. 31
 BY E. J. Egan OFFICE ENGINEER
 CHECKED BY R. L. ...
 OFFICE OF COUNTY ENGINEER REG. C.E. NO. 7860

Sheet	Pages
1	1-4
2	5-8



INDEX MAP
 SCALE: 1"=400'
 TRACT NO. 15239

Locked 6-6-55 M. G. ...

(41)

Trim Line

20529

TRACT NO. 15239

P.C. 3292

RS

Trim Line 7

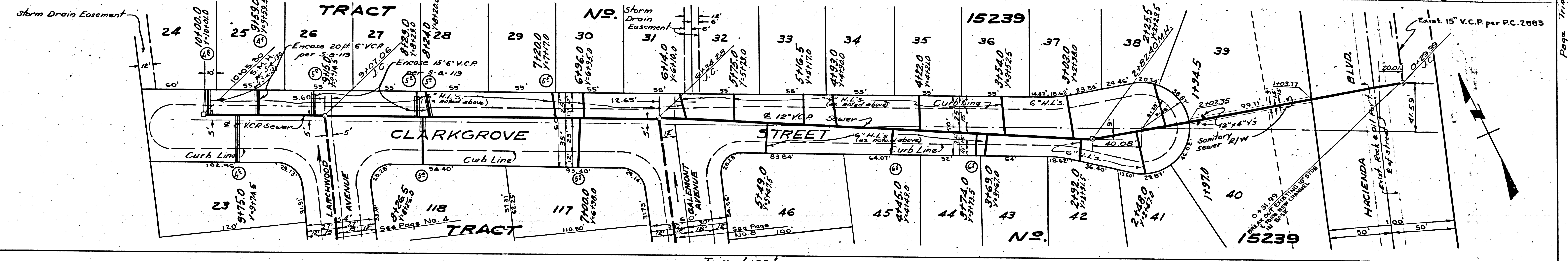
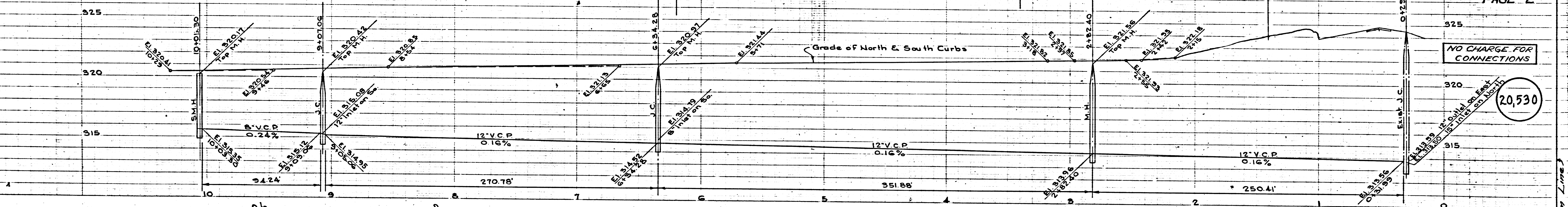
HOUSE LATERALS TO BE CONSTRUCTED WITH 1/4" RISE PER FT. TO PROPERTY LINE
Y's TO BE LAID HORIZONTAL

EXTRA STRENGTH PIPE

P.C. 3292
PAGE 2

NO CHARGE FOR CONNECTIONS

20,530



Trim Line 1

2

31

Page Trim Line

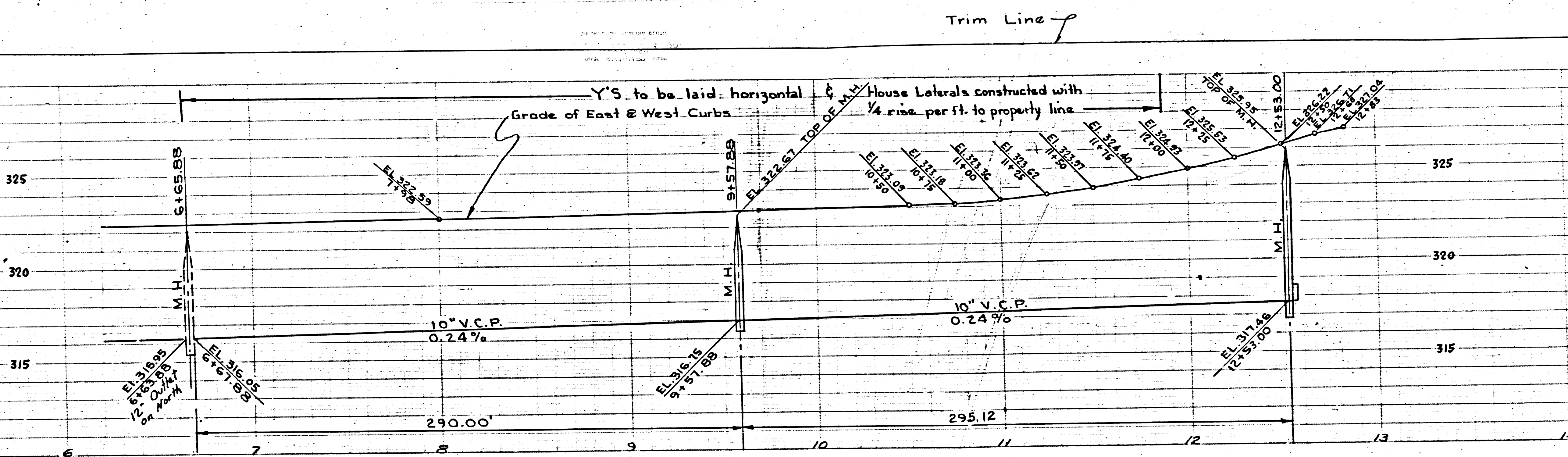
Page Trim Line

10

NO CHARGE FOR CONNECTIONS

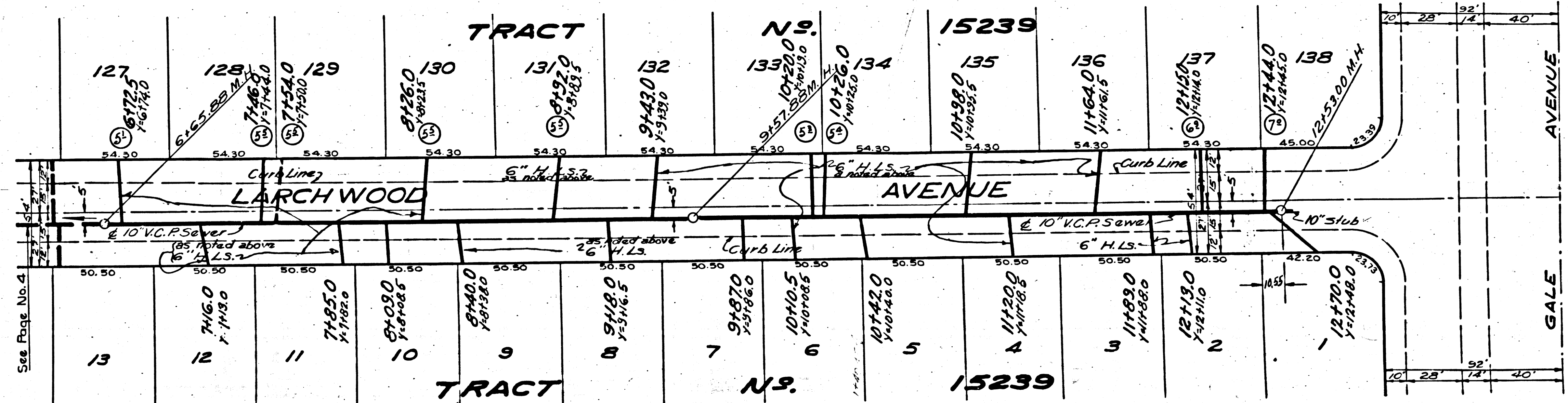
20,532

Page Trim Line



20,531

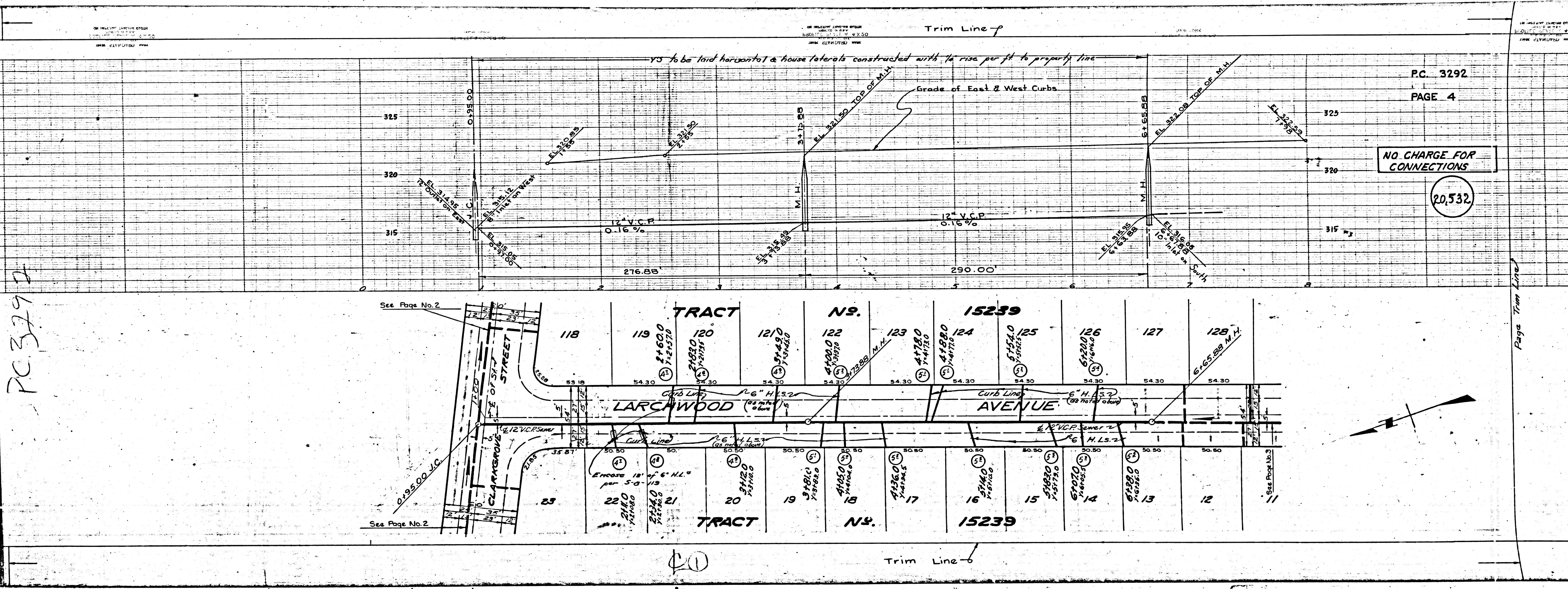
NO CHARGE FOR CONNECTIONS



See Page No. 4

Trim Line

Page Trim Line



PC 3292

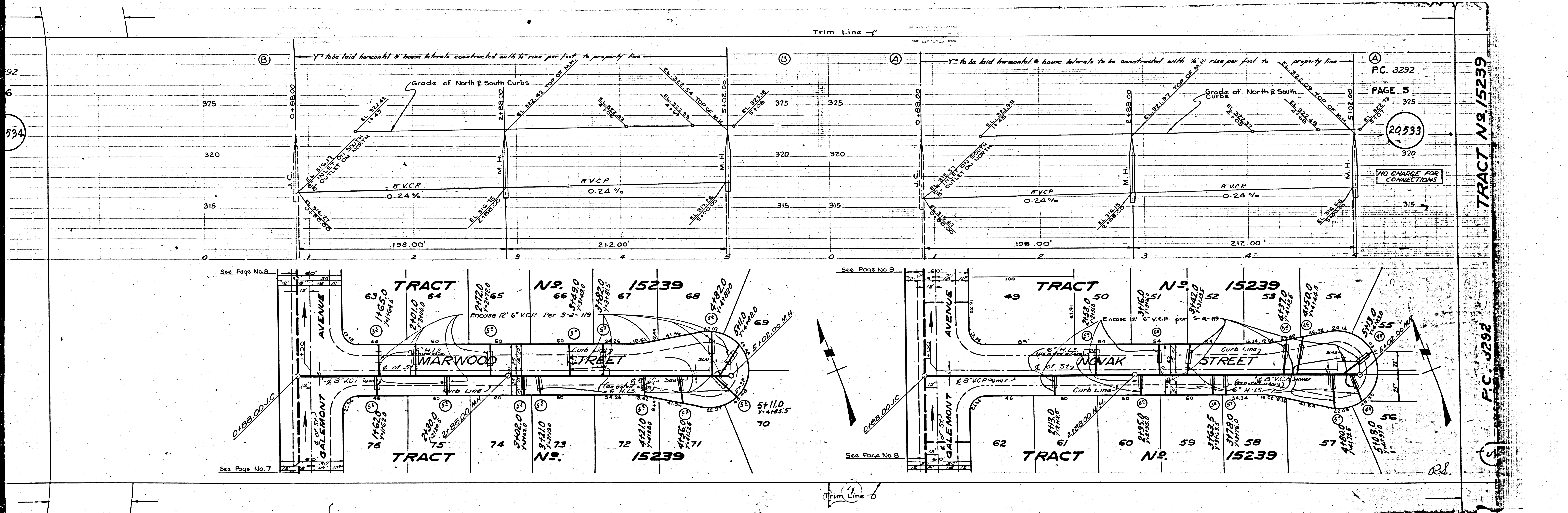
PC. 3292
PAGE 4

NO CHARGE FOR CONNECTIONS

20,532

20

Trim Line



32
6
534

Trim Line

PC. 3292
 PAGE 5
 20533
 NO CHARGE FOR CONNECTIONS

TRACT No. 15239

P.C. 3292

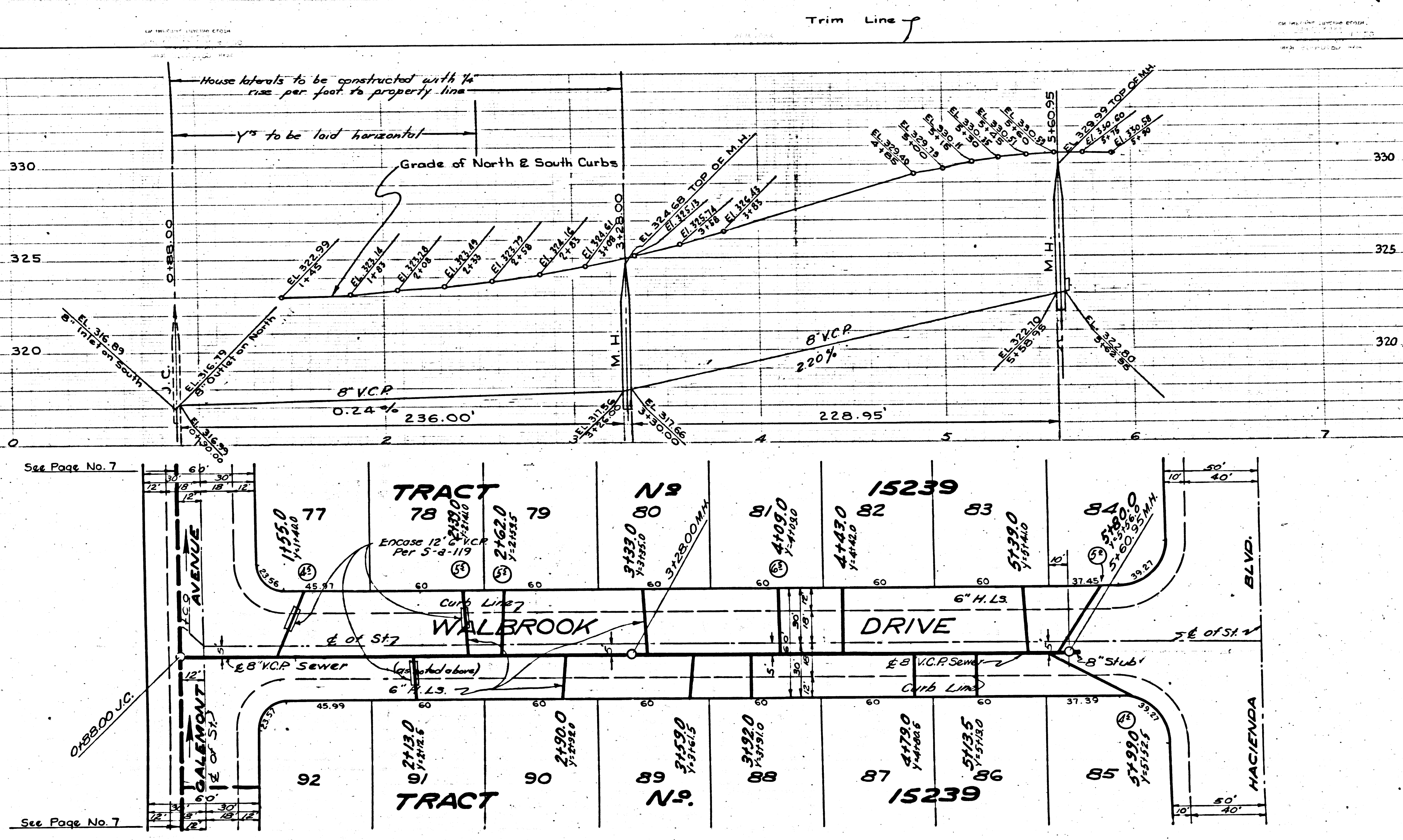
RL

Trim Line

3292

7

20,535



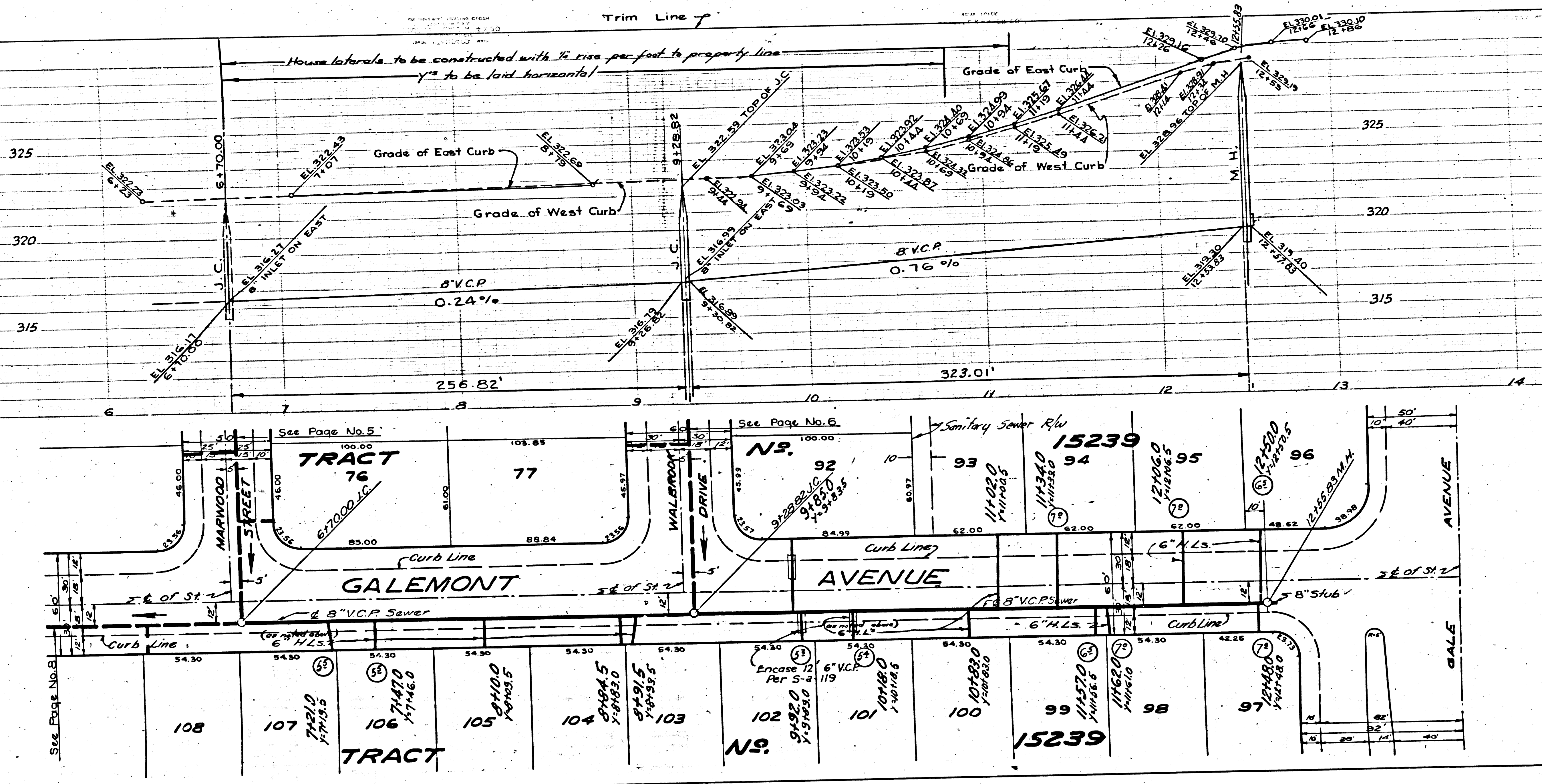
P.C. 3292
PAGE 6

NO CHARGE FOR CONNECTIONS

20,534

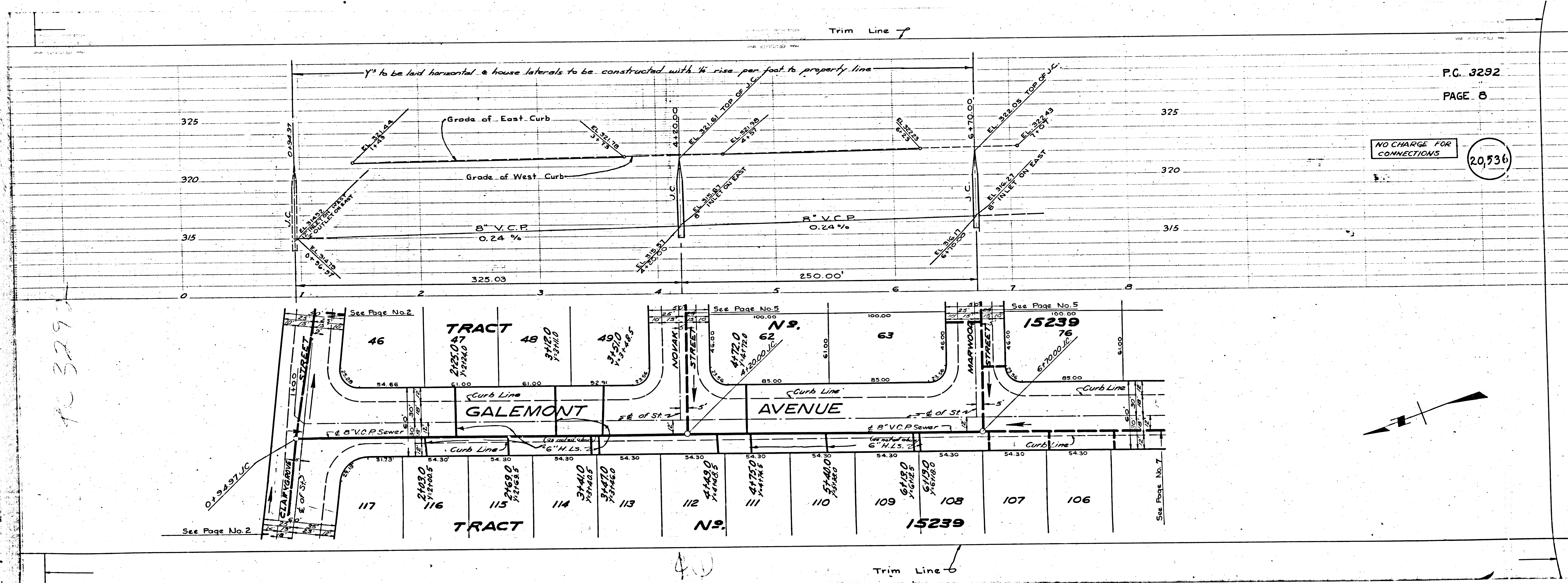
NO CHARGE FOR CONNECTIONS

20,536



NO CHARGE FOR CONNECTIONS

20,535



P.C. 3292
PAGE 6

NO CHARGE FOR CONNECTIONS
20,536

PC 3292

Trim Line 7

Trim Line 6

See Page No. 2

See Page No. 2

See Page No. 5

See Page No. 5

See Page No. 5

See Page No. 7