

P.C. 3296  
PAGE 2

505
500
495

CHARGE FOR CONNECTIONS

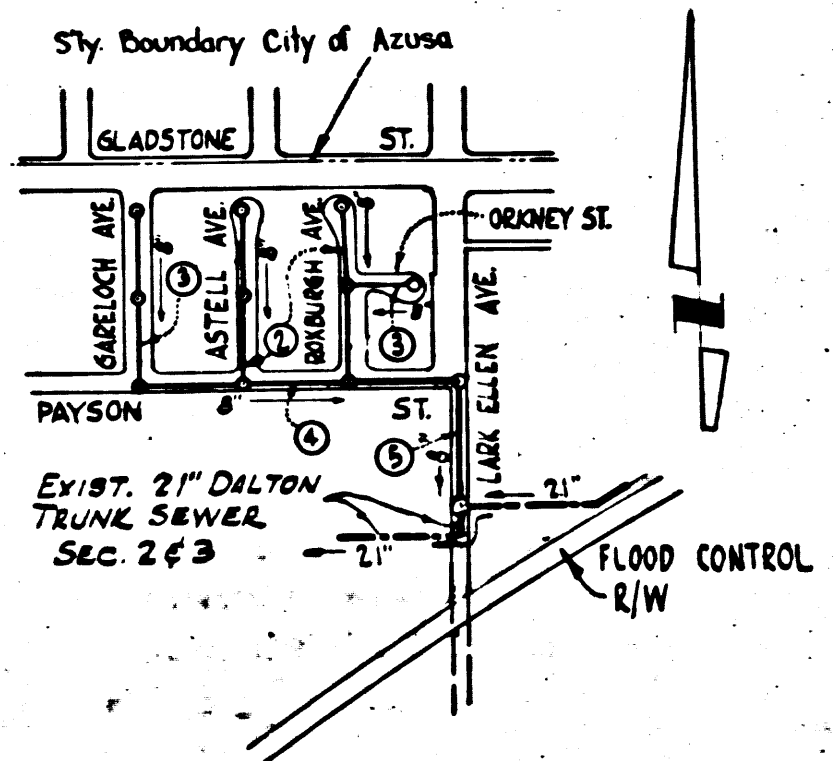
0.000 J.C.

PAGE TRIM LINE

**BENCH MARK**  
 56-7 LEAD AND NAIL IN CURB NEAR  
 WEST SIDE OF LARK ELLEN AVE., 58' SOUTH  
 OF THE E OF GLADSTONE AVE.  
 ELEVATION = 507.688'

SAN DIMAS Bldg. Dist. No. 10

- NOTE:  
 Provide stakes on the property lines or property lines produced at right angles to the sewer line at the center line of each manhole.  
 No representative of the County Engineer will survey or layout any portion of the work. The owner or his authorized representative shall furnish the County Engineer with grade sheets and stations for all house laterals and Y branches and shall provide stakes for them at their proper locations with stationing plainly marked. Any change in location shall be requested in writing by the owner or his representative.  
 No revisions shall be made in these plans without the approval of the County Engineer.
1. Use standard manhole frames and covers, S-a-117.
  2. Use standard strength pipe except as noted.
  3. Use cement mortar for all vitrified clay pipe joints.
  4. Resurface all trench within paved area to meet L.A. County Road Dept. or Calif. State Highway Dept. requirements in accordance with permit.
  5. Encase four feet of sewer at points of interference with poles, S-a-119.
  6. House laterals to be constructed with inverts at property line.....6.....feet below curb grade except as noted.
  7. All structures shall be brick sewer structures, S-a-104.
  8. For allowable leakage test, use Formula No. 1, Spec's., Sec. 51.



INDEX MAP  
 SCALE 1"=600'  
 P.C. 3296

NO CHARGE FOR CONNECTIONS  
 Lark Ellen - 12-14-54

SHEET	PAGES
1	1-5

Before breaking into any existing structure and before final acceptance of this work, County Sanitation District should be notified in order that required inspection may be made.

Revision Approved: Page 5 - Trunk Sewer Outlet  
 By: *P. S. Kuhn* 12-7-55  
 Office of County Engineer, Reg. C.E. No. 3862

Checked 4-25-56 *W. L. W. Laren*  
 L Trim Line

PROFILE, ALIGNMENT AND GRADE OF  
 SANITARY SEWERS  
 TO BE CONSTRUCTED IN  
 TRACT No 19634  
 PRIVATE CONTRACT NO. 3296  
 W. S. 47

P. C. 3296  
 PAGE 1

22,477  
 (5)

NOVEMBER 1954

EDWARD N. FRISIUS  
 Reg. C.E. No. 6369  
 FOR LEGEND SEE PLAN NO. S-a-64

NOTE:  
 Grades to which this improvement is to be constructed are shown on plans and profiles. Grade points for top of curbs, center line of streets, or center line of alleys are shown by circles on profiles. At all points between designated points the grade shall be established so as to conform to a straight line drawn between said designated points.  
 Elevations are in feet above U.S.G.S. datum or mean sea level.  
 This drawing and the data hereon are hereby made a part of the specifications.  
 Work shall be constructed according to specifications on file in the office of the County Engineer and shall be prosecuted only in the presence of the County Engineer.  
 Before work can be started, the contractor must obtain a permit to excavate in County streets from the L.A. County Road Dept., 108 W. 2nd St., and make a deposit with the County Engineer, 733 L.A. County Engineering Building, sufficient to cover the cost of construction inspection and record plans.  
 Approval of this plan by the County of Los Angeles does not constitute a representation as to the accuracy of the location of or the existence or non-existence of any underground utility, pipe, or structure within the limits of this project. This note applies to all sheets.  
 If work is to be done in a State Highway, a permit must be obtained from the State of California, Division of Highways, 120 South Spring Street.

COUNTY OF LOS ANGELES, CALIFORNIA  
 Approved, William J. Fox, County Engineer  
 Approved, A. M. Rawns  
 CHIEF ENGR. CO. SAN. DIST. NO. 22  
 By: *A. P. Collins*  
 Sanitation Engineer  
 Checked By: *P. S. Kuhn* 12-11-55  
 Office of County Engineer, Reg. C.E. No. 3862

TRACT No 19634  
 P.C. 3296  
 6369  
 REG. C.E. NO. 6369

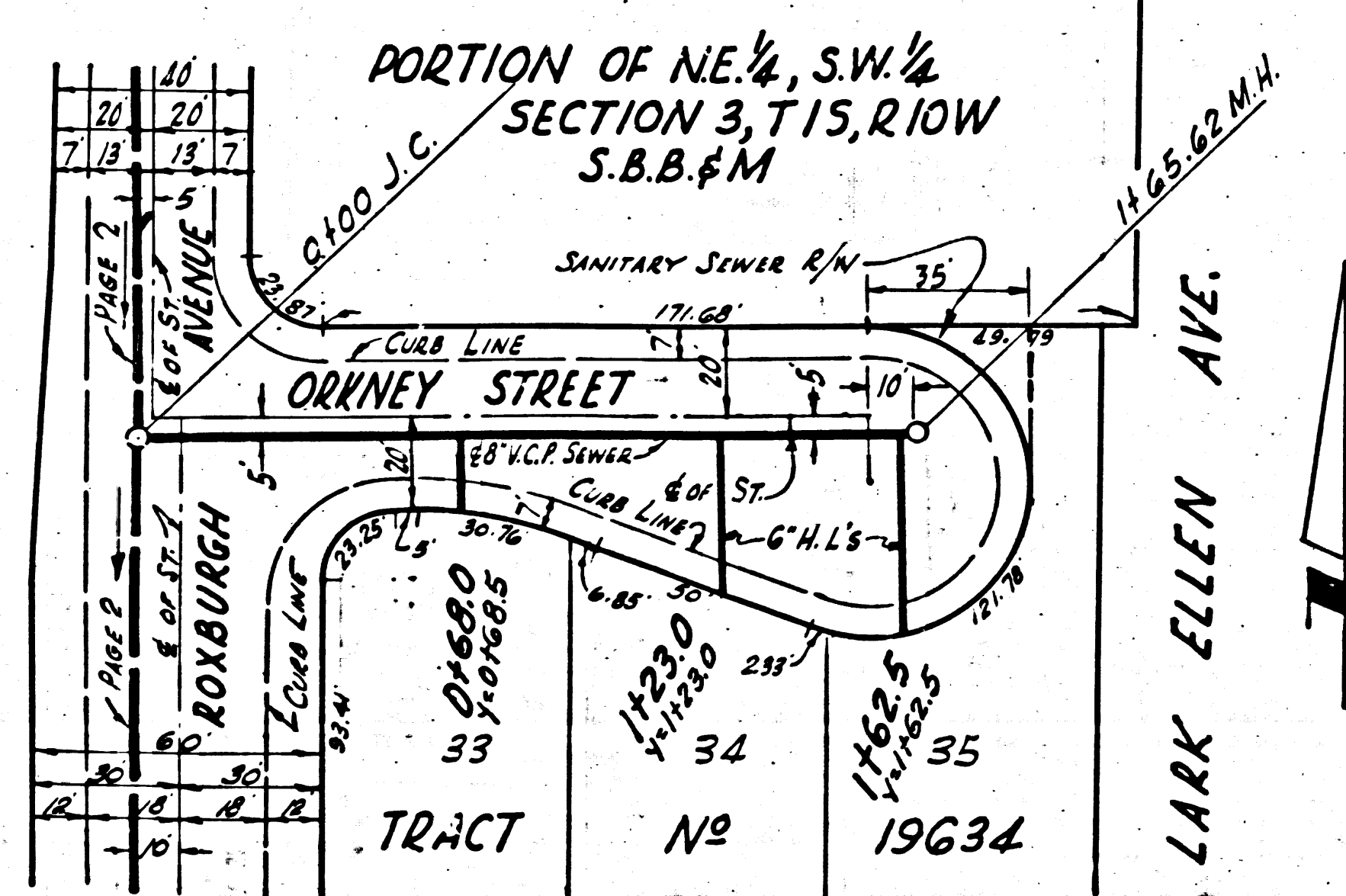
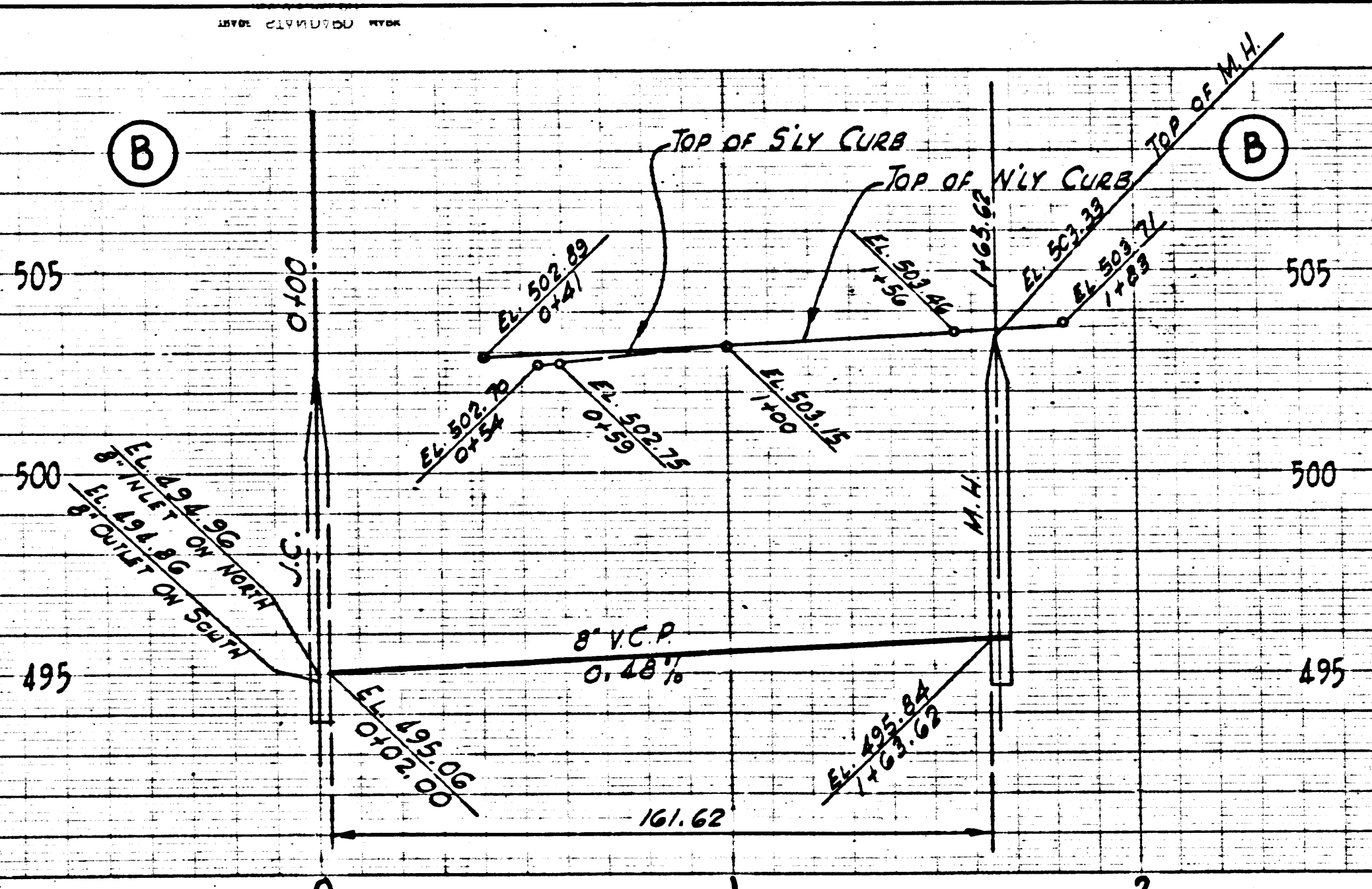
*Rel*



P.C. 3296  
PAGE 4

NO CHARGE FOR  
CONNECTIONS

22,480

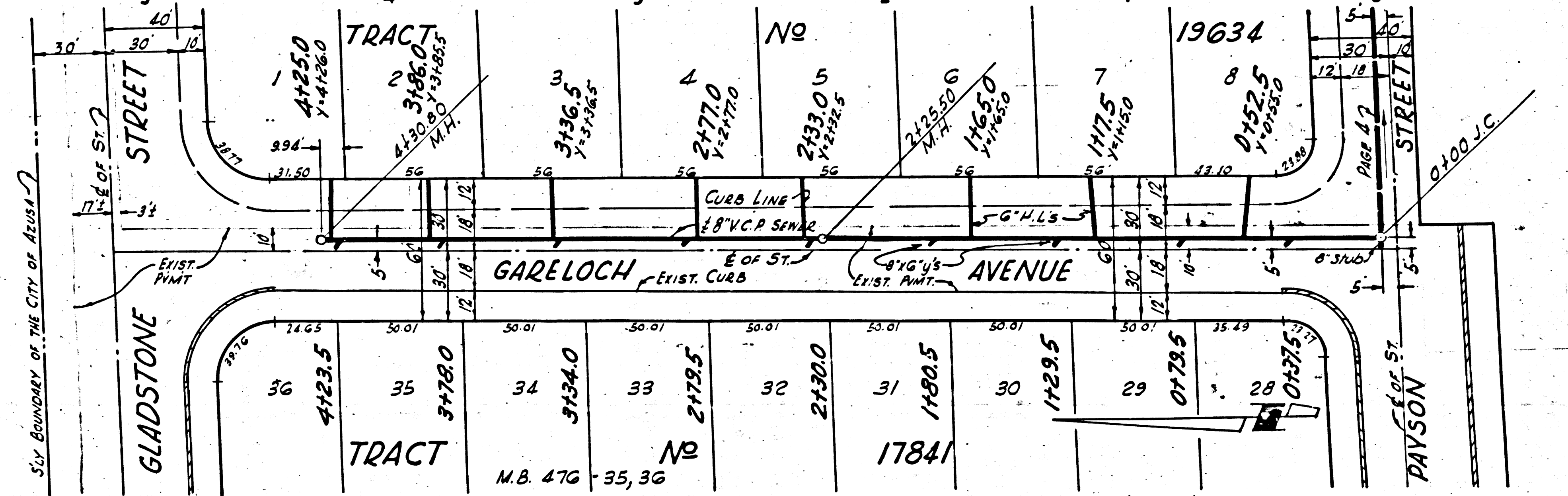
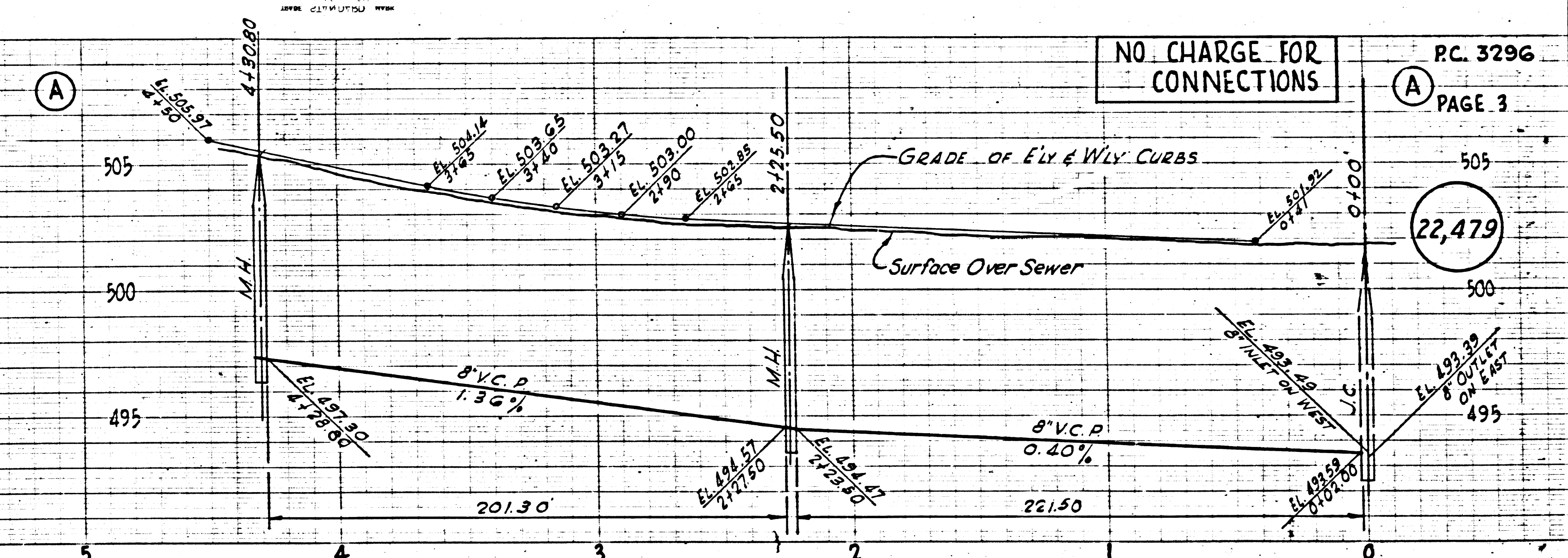


TRIM LINE

NO CHARGE FOR  
CONNECTIONS

P.C. 3296  
PAGE 3

22,479



TRIM LINE



PC. 3296  
PAGE 5

NO CHARGE FOR CONNECTIONS

22,481

PC. 3296  
PAGE 4

NO CHARGE FOR CONNECTIONS

22,480

