

NOTE: PUENTE BLDG. DIST. No 2

- Provide stakes on the property lines or property lines produced at right angles to the sewer line at the center line of each manhole.
- No representative of the County Engineer will survey or layout any portion of the work.
- The owner or his authorized representative shall furnish the County Engineer with grade sheets and stations for all house laterals and Y branches and shall provide stakes for them at their proper locations with stationing plainly marked. Any change in location shall be requested in writing by the owner or his representative.
- No revisions shall be made in these plans without the approval of the County Engineer.
1. Use standard manhole frames and covers, S-a-117.
 2. Use standard strength pipe
 3. Use cement mortar for all vitrified clay pipe joints.
 4. Resurface all trench within paved area to meet L.A. County Road Dept. or California State Highway Dept. requirements in accordance with permit.
 5. Encase four feet of sewer at points of interference with poles, S-a-119.
 6. House laterals to be constructed with inverts at property line 6 feet below curb grade
 7. All structures shall be brick sewer structures, S-a-104.
 8. For allowable leakage test, use Formula No. 1, Spec's., Sec. 51.
- Manhole tops in unimproved Rights-Of-Way to be 6" above finish grade.

PROFILE, ALIGNMENT AND GRADE OF
SANITARY SEWERS
TO BE CONSTRUCTED IN

PAGE 1
P.C. 3300

TRACT No 19905

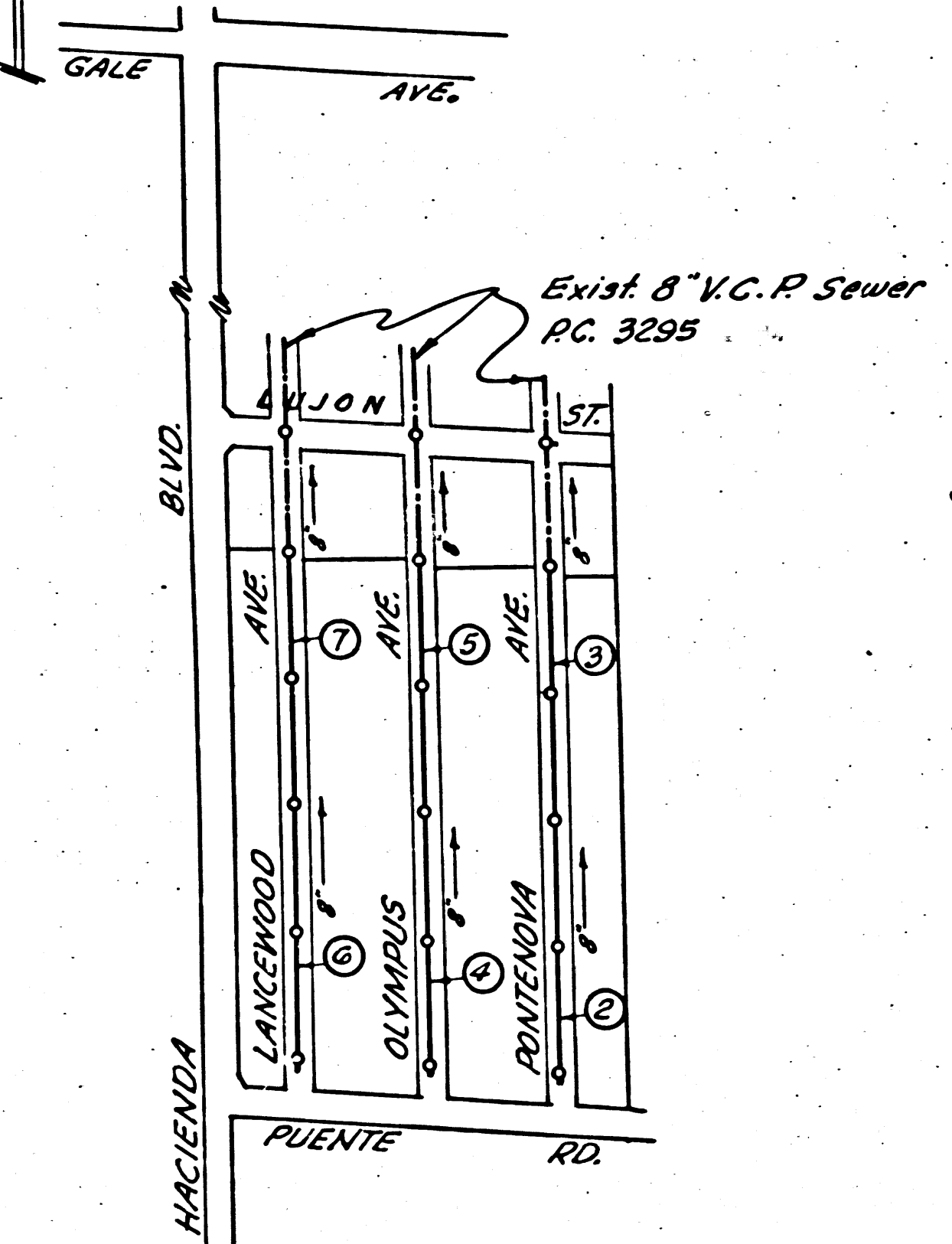
PRIVATE CONTRACT NO. 3300
W. S. 38
2 SHEETS
Scale: VERT. 1"=4'
HORIZ. 1"=40' Oct, 1954
PREPARED IN THE OFFICES OF
KEMMERER ENGR. CO., INC.

John C. Hermann
Eng. C. E. No. 8244
FOR LEGEND SEE PLAN NO. S-a-64

NOTE:
Grades to which this improvement is to be constructed are shown on plan and profiles. Grade points for top of curb, center line of streets, or center line of alleys are shown by circles on profiles. At all points between designated points the grade shall be established so as to conform to a straight line drawn between said designated points.
Elevations are in feet above U.S.G.S. datum or mean sea level.
This drawing and the data hereon are hereby made a part of the specifications.
Work shall be constructed according to specifications on file in the office of the County Engineer and shall be prosecuted only in the presence of the County Engineer.
Before work can be started, the contractor must obtain a permit to excavate in County streets from the L.A. County Road Dept., 108 W. 2nd St. and make a deposit with the County Engineer, 133 L.A. County Engineering Building, sufficient to cover the cost of construction inspection and record plans.
Approval of this plan by the County of Los Angeles does not constitute a representation as to the accuracy of the location of or the existence or non-existence of any underground utility, pipe, or structure within the limits of this project. This note applies to all sheets.
If work is to be done in a State Highway, a permit must be obtained from the State of California, Division of Highways, 120 South Spring Street.

COUNTY OF LOS ANGELES, CALIFORNIA
Approved, William J. Fox, County Engineer
Approved, A. M. Rawm
CHIEF ENGR. SO. SAN DIST. NO. 21
A. P. Collins *D. C. Hathorn*
Sanitation Engineer Office Engineer
Checked by: *R. P. Fisher* 1-17-55
Office of County Engineer, Eng. C. E. No. 7860

B.M. S.G. 104 G, Page 450 Spk. & Lead in S.E. cor. of conc. found. S.P.R.R. Xing signal 1.35' W. of E. of Hacienda Blvd. grad. No. 420' E. No. of No. 101, main line Valley Blvd. Xing in Puente. ELEV. 323.480



- INDEX MAP -
TRACT No 19905
SCALE: 1"=400'
P.C. 3300

checked 7-26-55 *Wharen*

SHEET NO	PAGES
1	1-4
2	5-7

NO CHARGE FOR CONNECTIONS
R. P. Fisher 1-17-55

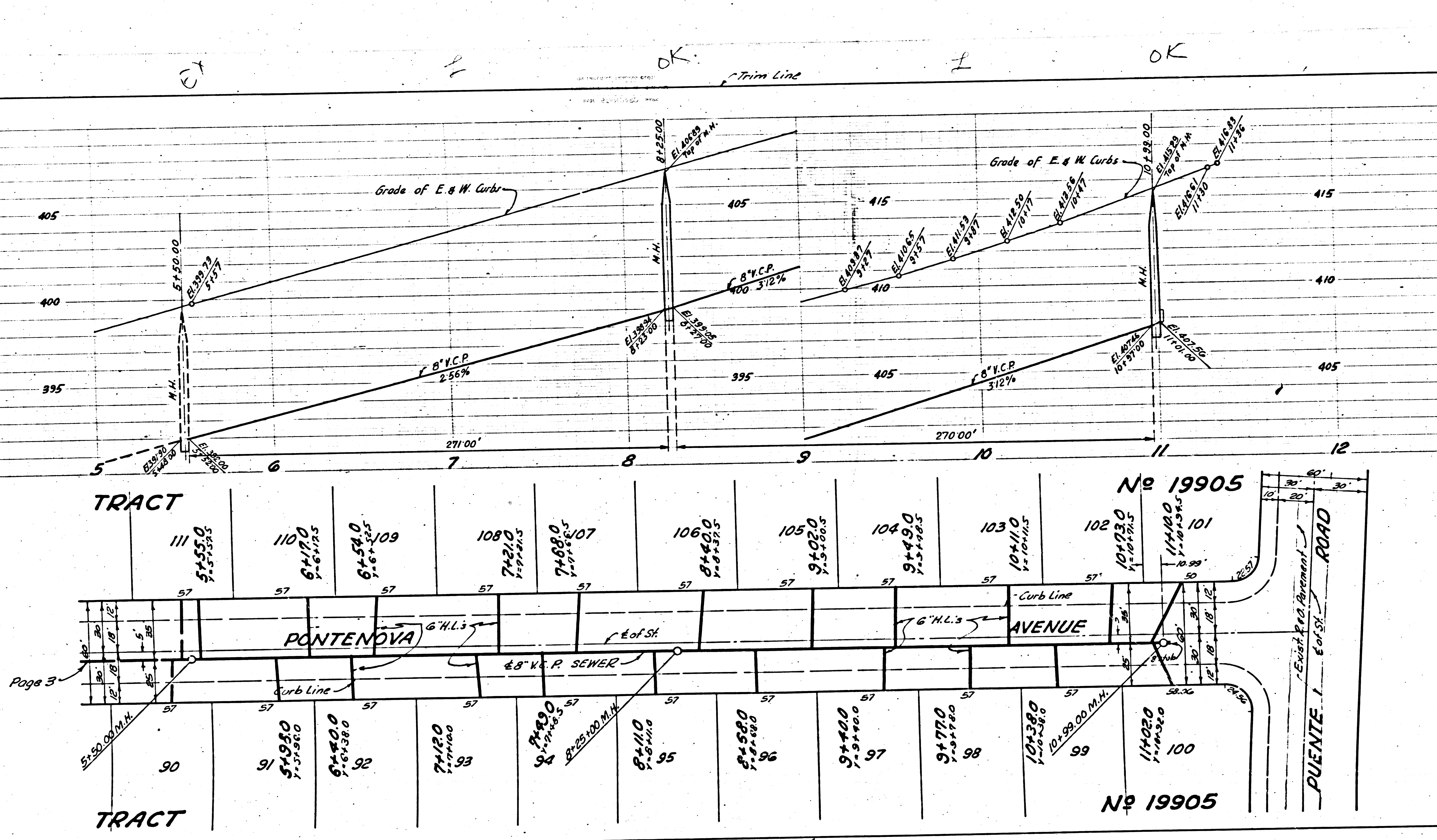
1

20,977

TRACT No 19905

P.C. 3300
000E.C.D.

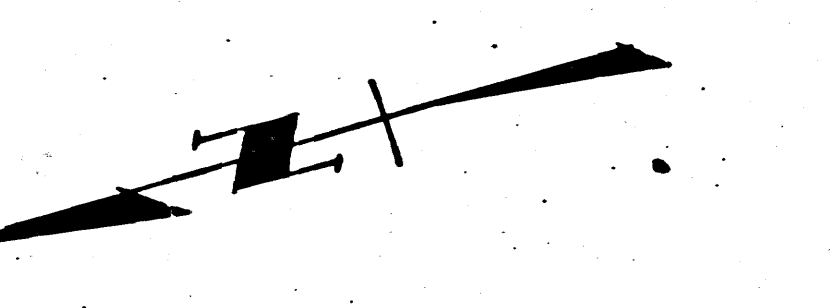
1
S-30



PAGE 2
RC. 3300

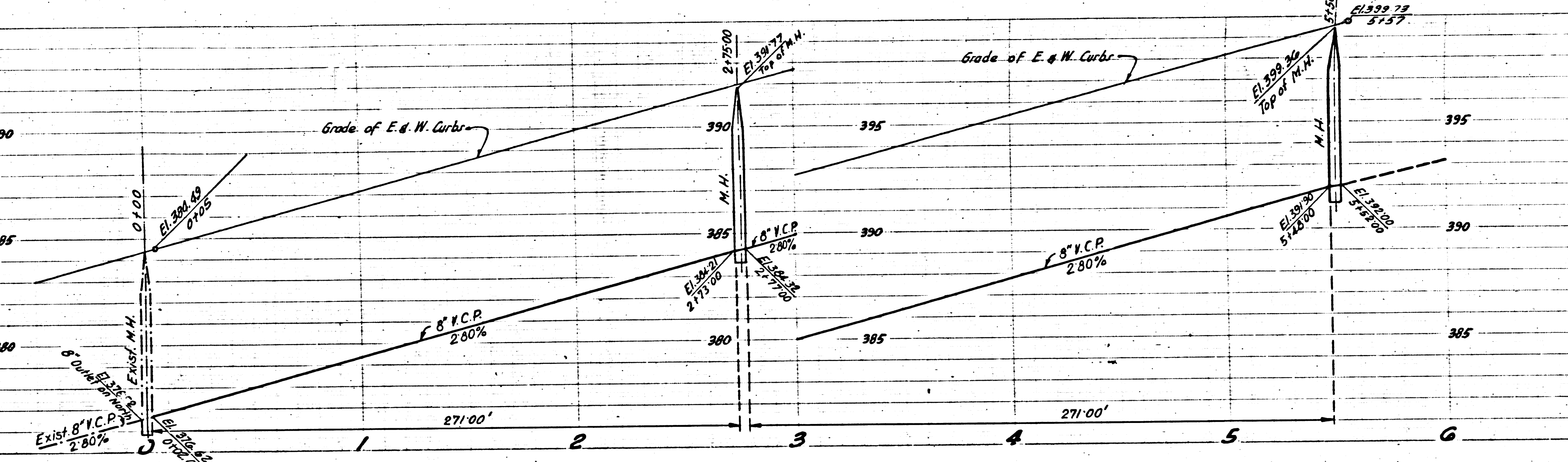
NO CHARGE FOR
CONNECTIONS

20,978



checked 7-26-5

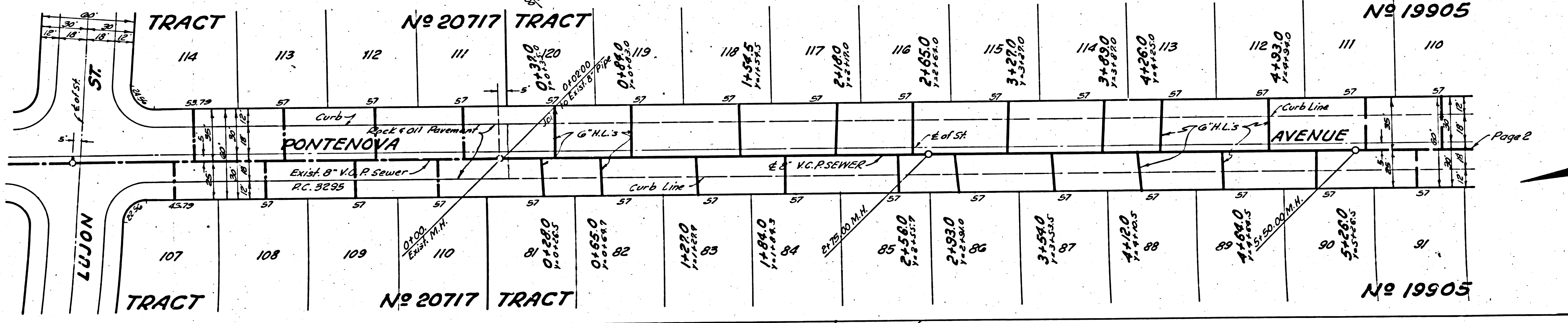
EX. OK L OK



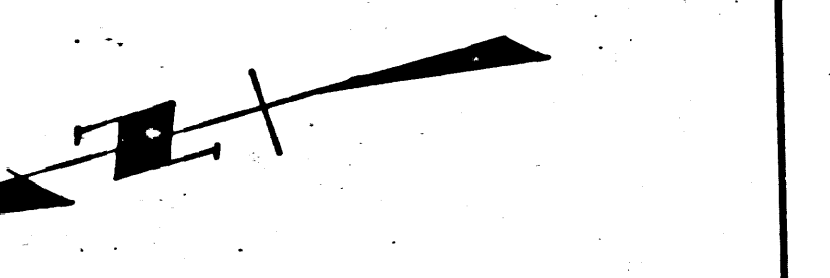
PAGE 3
P.C. 3300

NO CHARGE FOR
CONNECTIONS

20.979

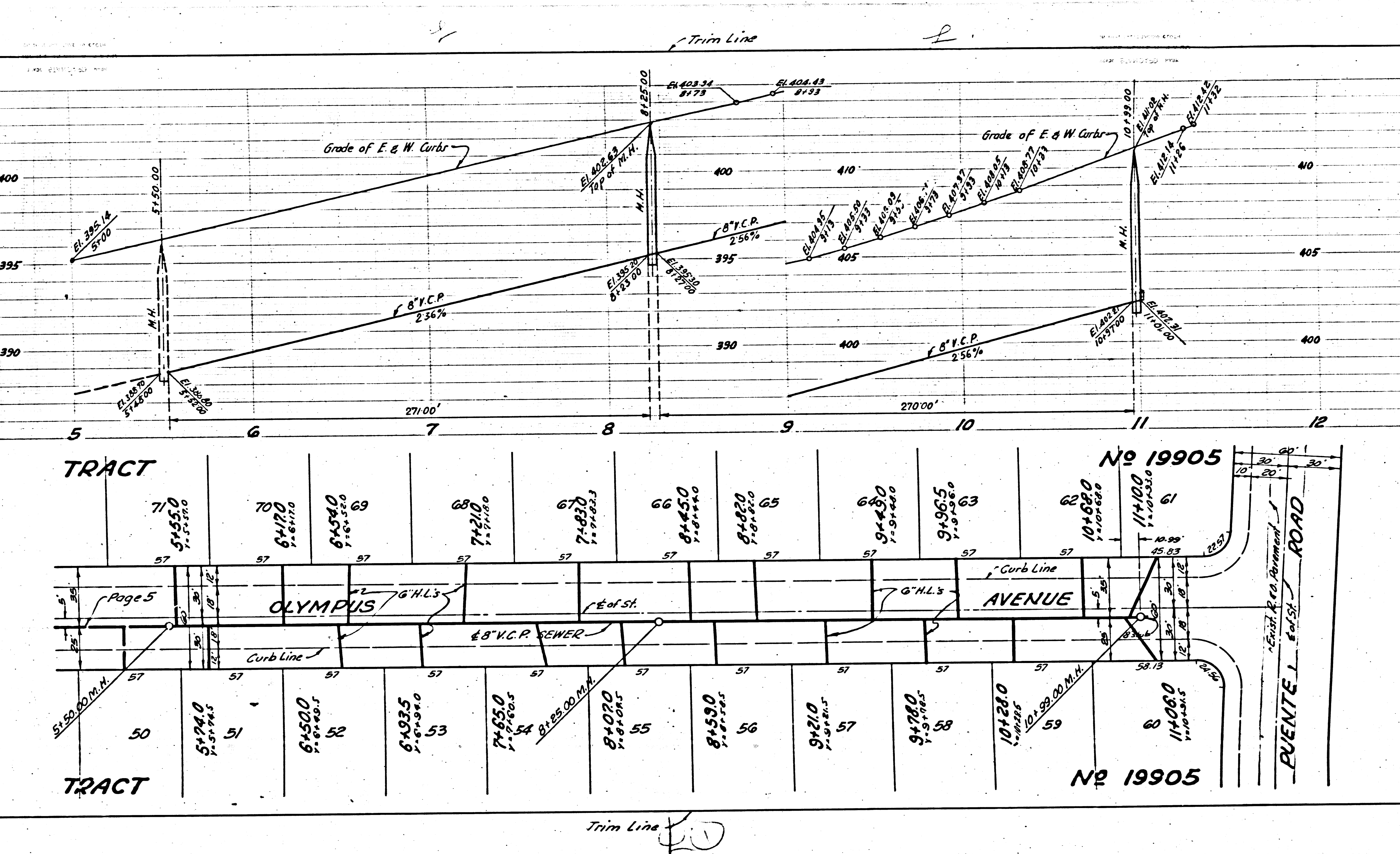


Page 2



Trim Line

P-3300



PAGE 4
P.C. 3300

NO CHARGE FOR
CONNECTIONS

20,980

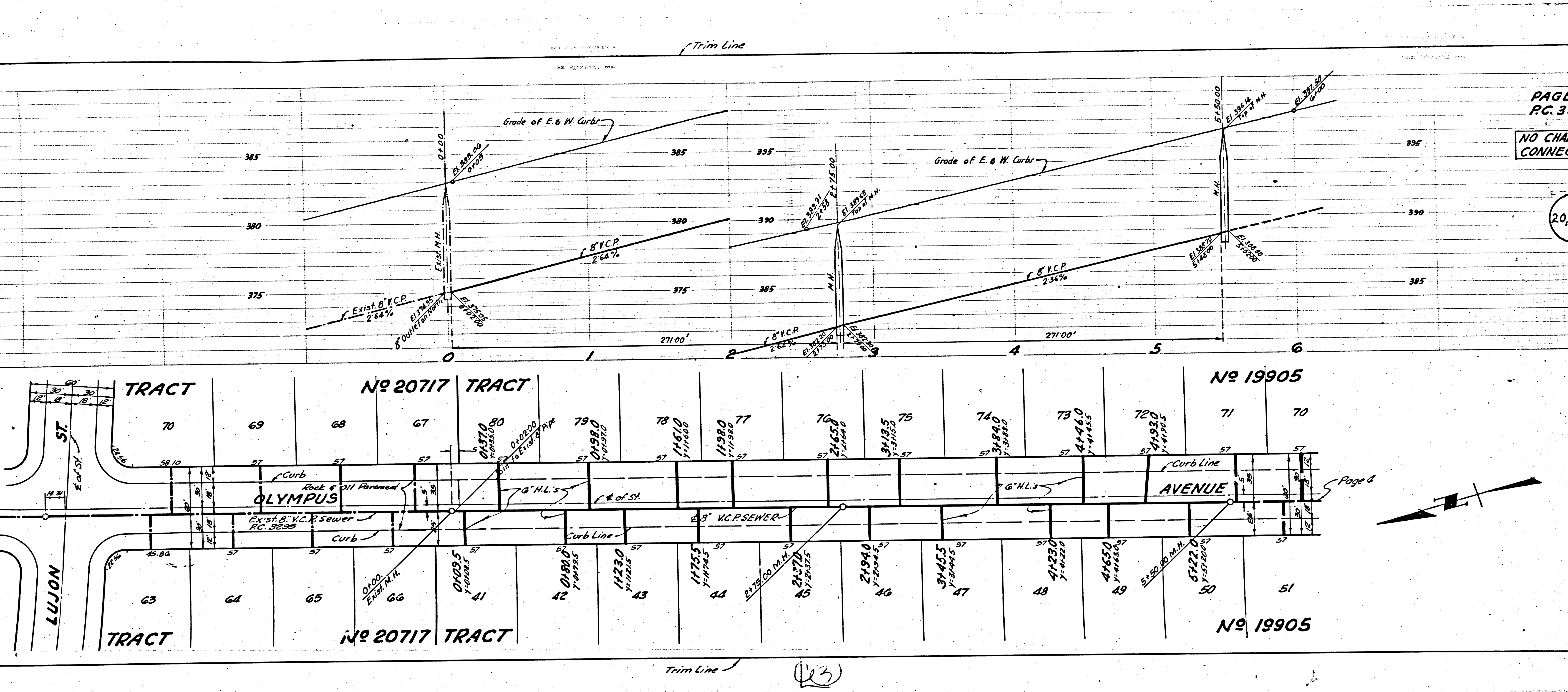
TRACT										No 19905	
71	70	69	68	67	66	65	64	63	62	61	60
51950	51940	51930	51920	51910	51900	51890	51880	51870	51860	51850	51840
57	57	57	57	57	57	57	57	57	57	57	57
OLYMPUS AVENUE										PUENTE I ROAD	
50	51	52	53	54	55	56	57	58	59	60	61
51940	51930	51920	51910	51900	51890	51880	51870	51860	51850	51840	51830
57	57	57	57	57	57	57	57	57	57	57	57
TRACT										No 19905	

Trim Line

PAGE 5
P.C. 3300

NO CHARGE FOR
CONNECTIONS

20,981



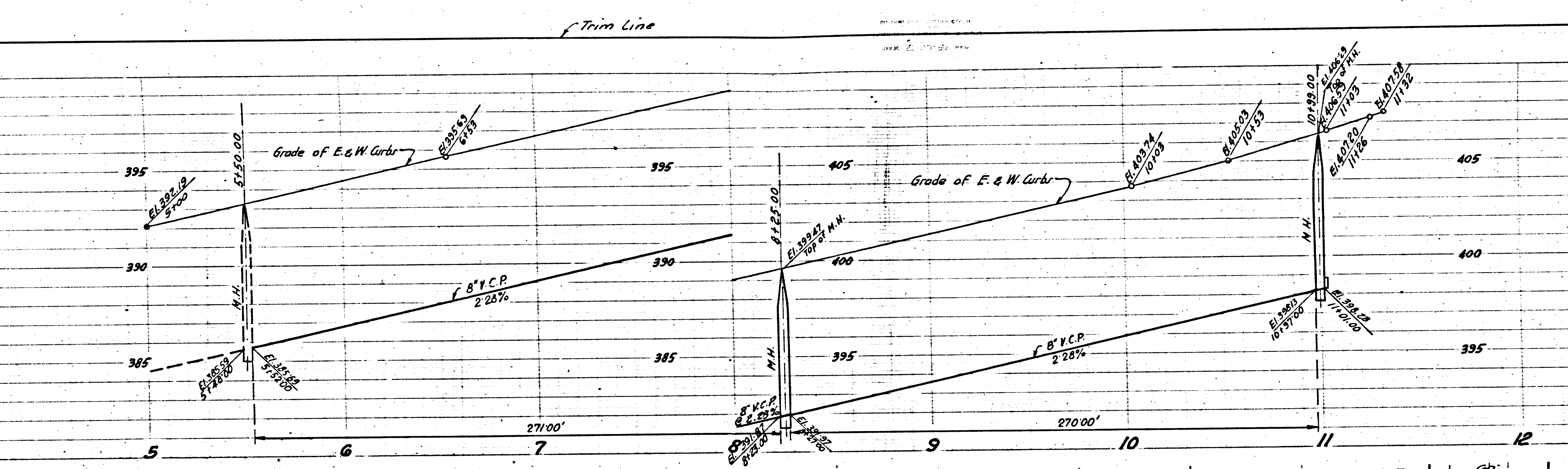
Page 4



7.71

Trim Line

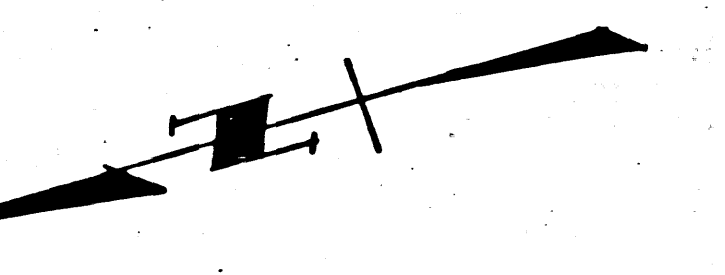
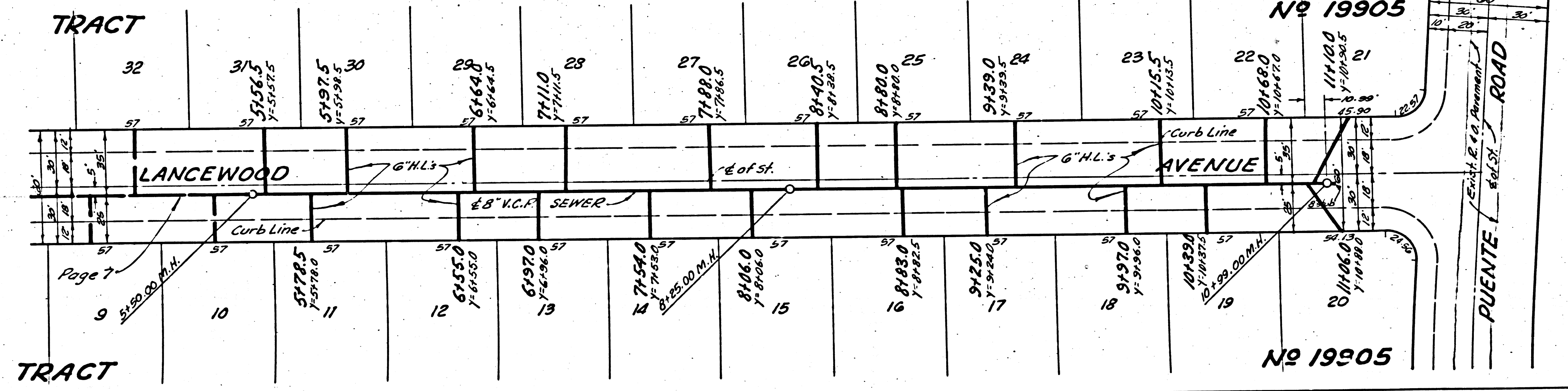
(23)



PAGE 6
P.C. 3300

NO CHARGE FOR
CONNECTIONS

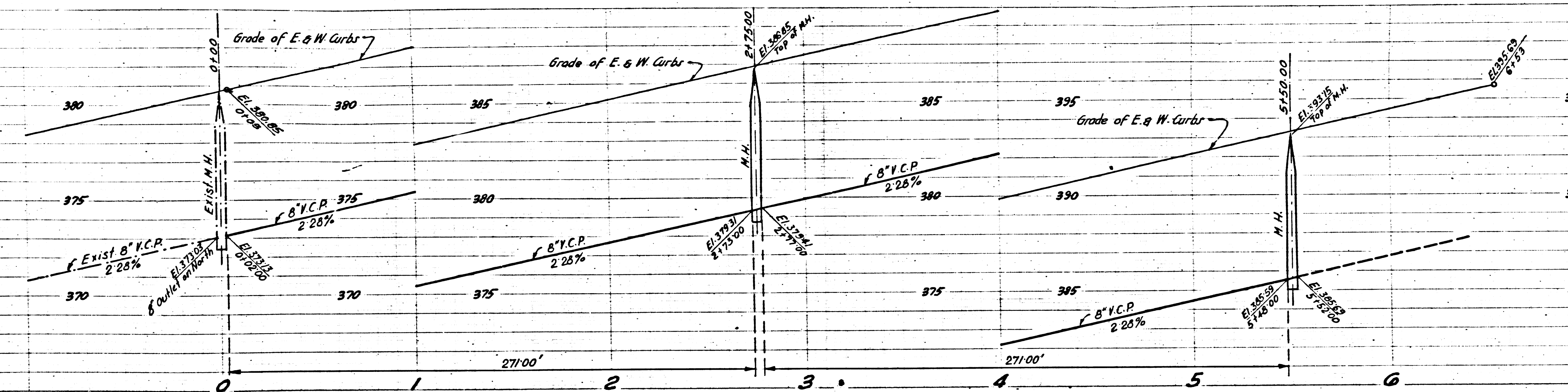
20,982



Trim Line

(2)

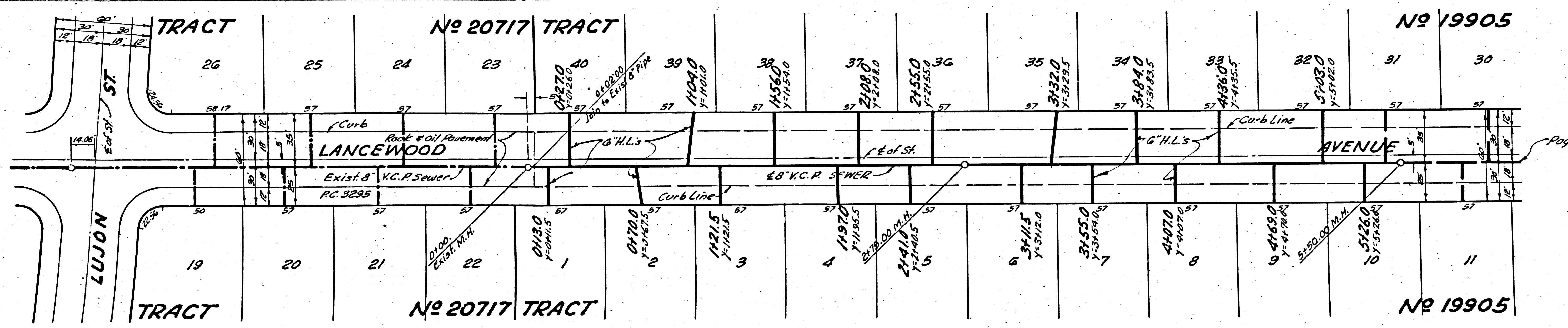
Trim Line



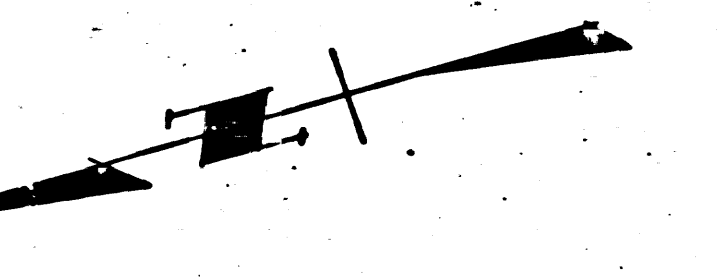
PAGE 7
P.C. 3300

NO CHARGE FOR
CONNECTIONS

20,983



Page 6



Trim Line

20