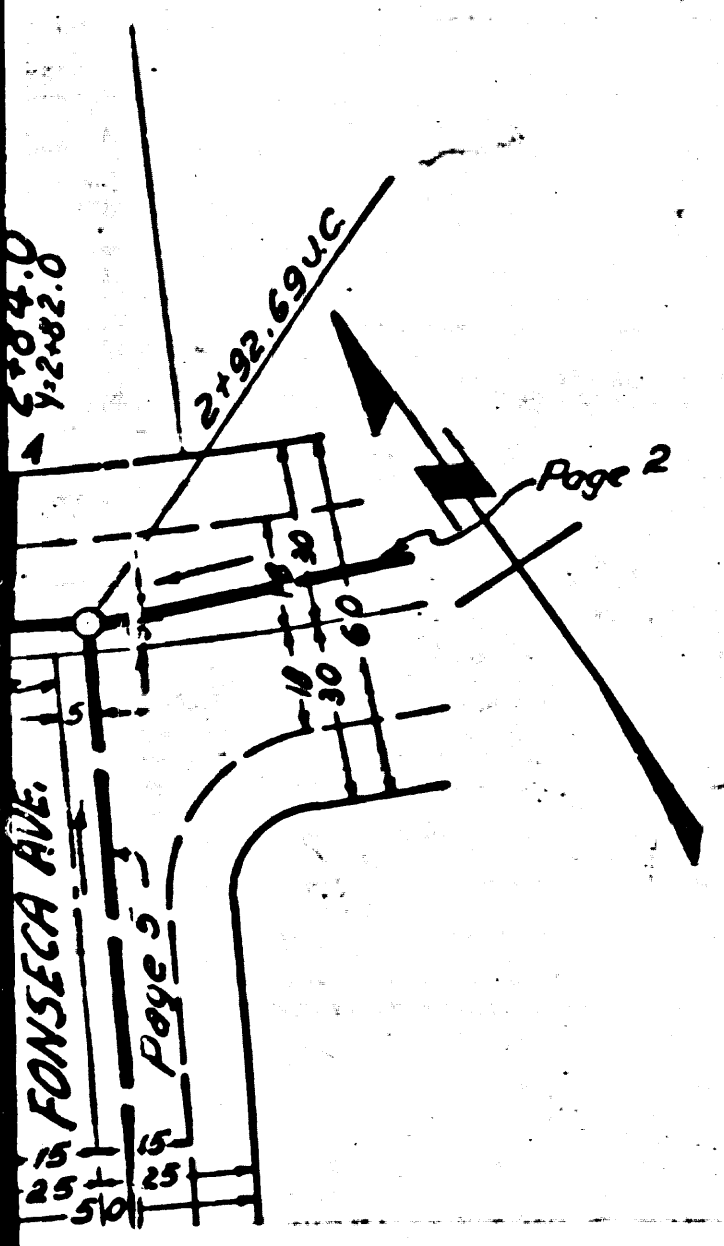


P.C. 13302  
 Page 3  
 Double Scale  
 130  
 120  
 NO CHARGE  
 FOR CONNECTIONS  
 110

P.C. 3302  
 Page 2  
 Double Scale  
 150  
 NO CHARGE  
 FOR CONNECTIONS  
 140  
 130

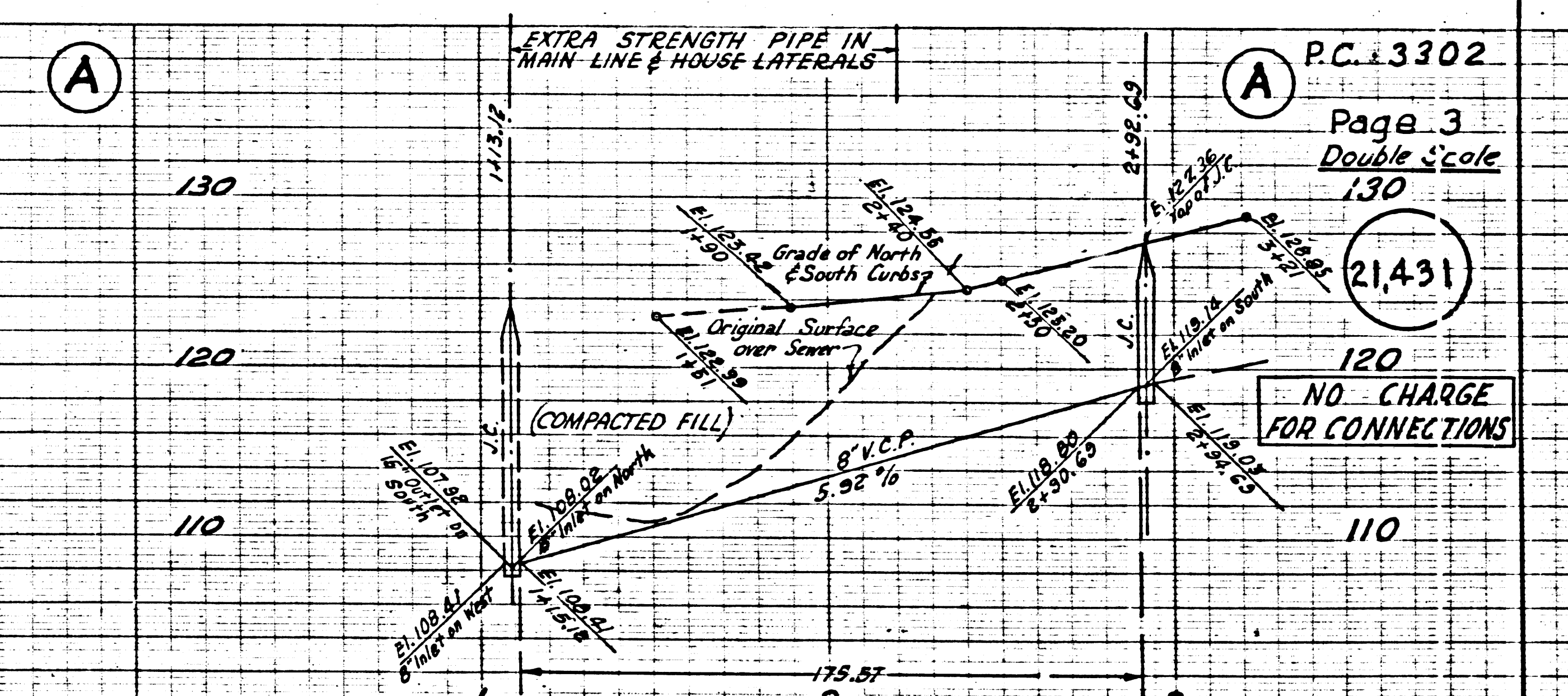
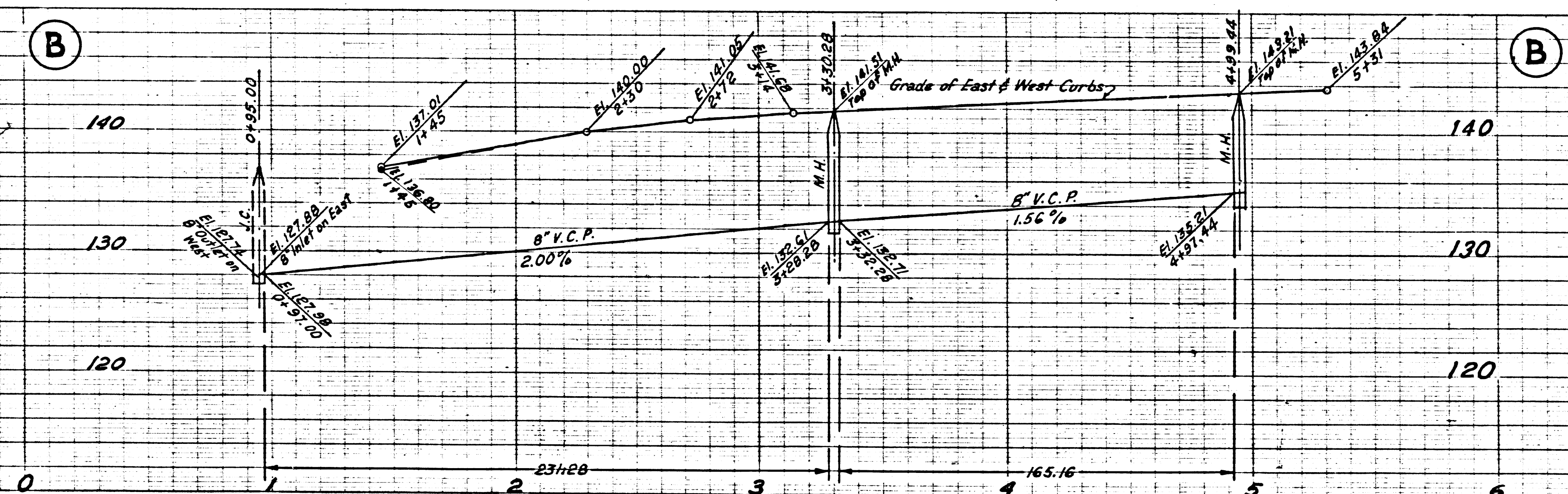


04

PC. 3302  
Page 4  
Double Scale

NO CHARGE  
FOR CONNECTIONS

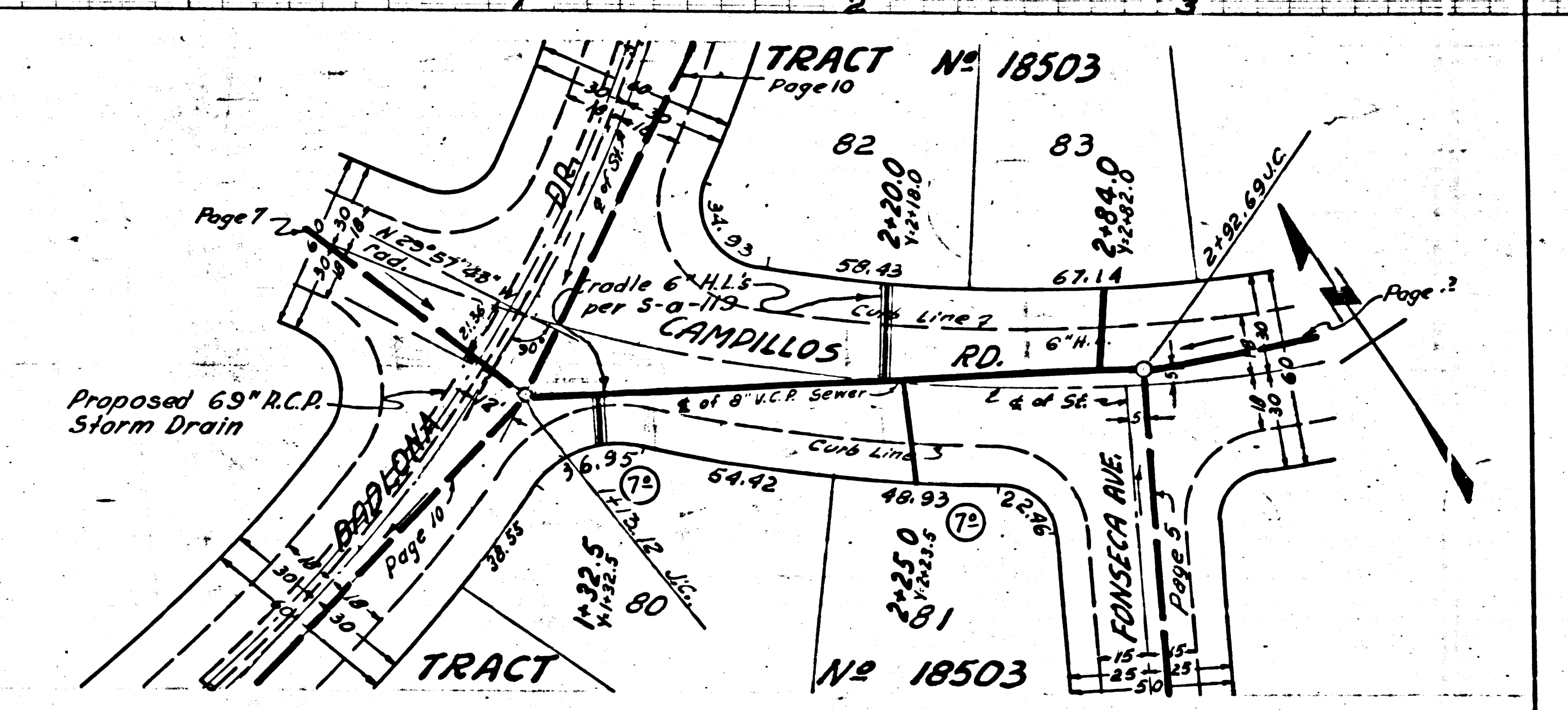
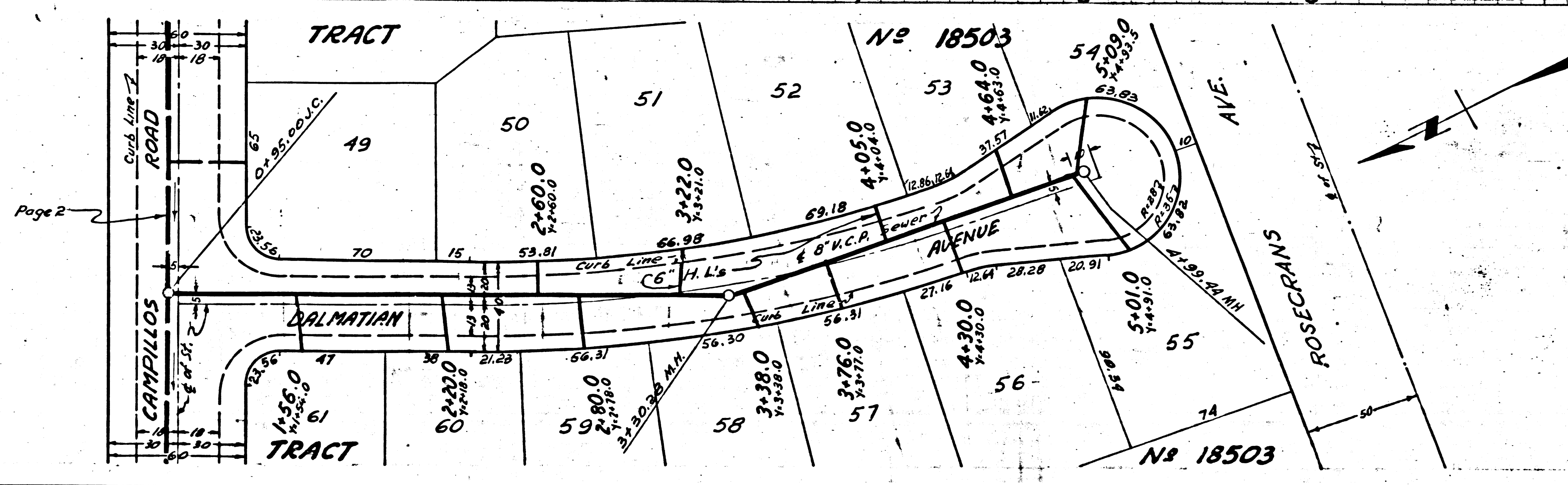
21,432



PC. 3302  
Page 3  
Double Scale  
130

21,431

NO CHARGE  
FOR CONNECTIONS



P.C. 3302  
Page 5  
Double Scale

NO CHARGE  
FOR CONNECTIONS

21,433

B

150

140

130

0

1

2

3

4

5

150

140

130

1

2

3

4

5

1

150

140

130

2

3

4

5

1

2

150

140

130

3

4

5

1

2

3

150

140

130

4

5

1

2

3

4

150

140

130

5

1

2

3

4

1

150

140

130

2

3

4

5

1

2

150

140

130

3

4

5

1

2

3

150

140

130

4

5

1

2

3

4

150

140

130

5

1

2

3

4

1

150

140

130

2

3

4

5

1

2

150

140

130

3

4

5

1

2

3

150

140

130

4

5

1

2

3

4

150

140

130

5

1

2

3

4

1

150

140

130

2

3

4

5

1

2

150

140

130

3

4

5

1

2

3

150

140

130

4

5

1

2

3

4

150

140

130

5

1

2

3

4

1

150

140

130

2

3

4

5

1

2

150

140

130

3

4

5

1

2

3

150

140

130

4

5

1

2

3

4

150

140

130

5

1

2

3

4

1

150

140

130

2

3

4

5

1

2

150

140

130

3

4

5

1

2

3

150

140

130

4

5

1

2

3

4

150

140

130

5

1

2

3

4

1

150

140

130

2

3

4

5

1

2

BY INVENTOR, LUIS G. STAN  
REGISTERED PATENT OFFICE  
SAN FRANCISCO, CALIF.

P.C. 3302  
Page 4  
Double Scale

NO CHARGE  
FOR CONNECTIONS

21,432

B

150

140

130

0

1

2

3

4

5

150

140

130

1

2

3

4

5

1

150

140

130

2

3

4

5

1

2

150

140

130

3

4

5

1

2

3

150

140

130

4

5

1

2

3

4

150

140

130

5

1

2

3

4

1

150

140

130

2

3

4

5

1

2

150

140

130

3

4

5

1

2

3

150

140

130

4

5

1

2

3

4

150

140

130

5

1

2

3

4

1

150

140

130

2

3

4

5

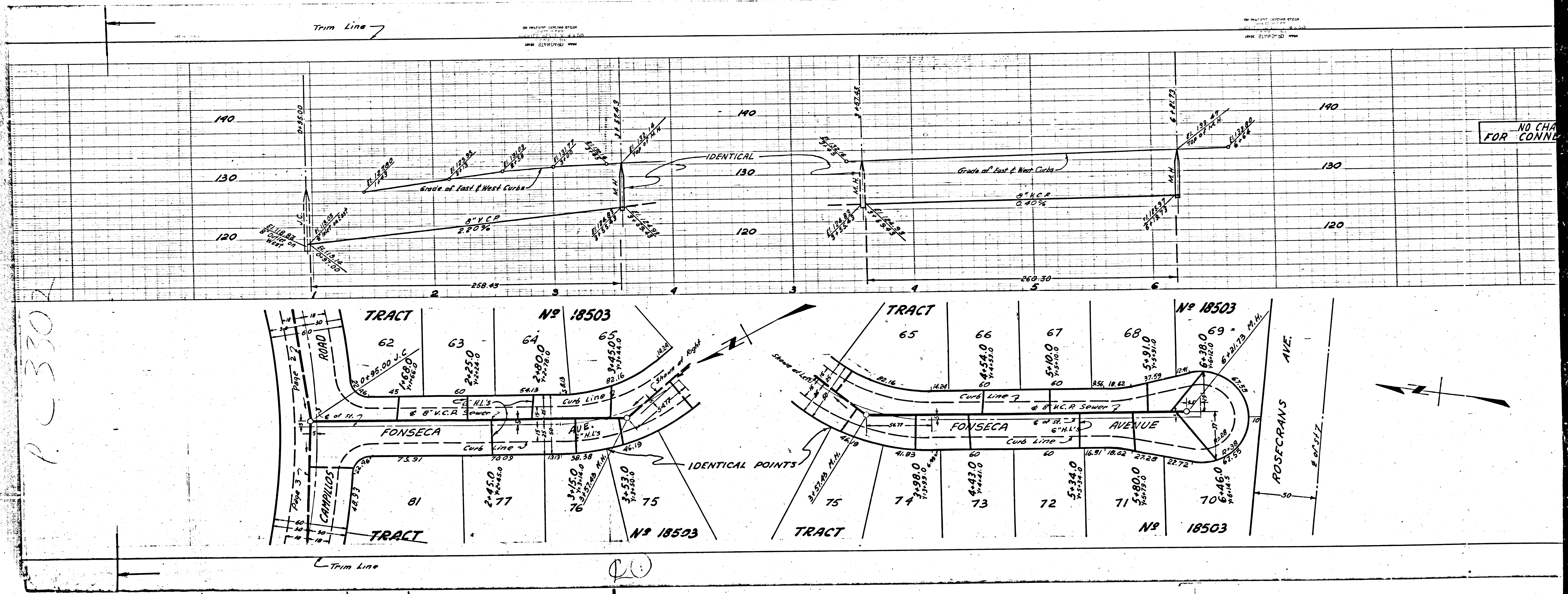
1

2

150

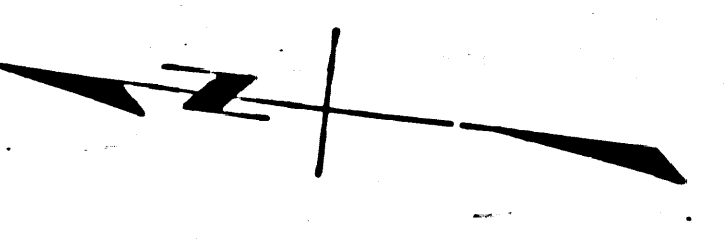
140

130



P 330

NO CHANGES FOR CONNECTION



60

PC. 3302

Page 7  
DOUBLE SCALE

CHARGE CONNECTIONS

21,435

PC. 3302

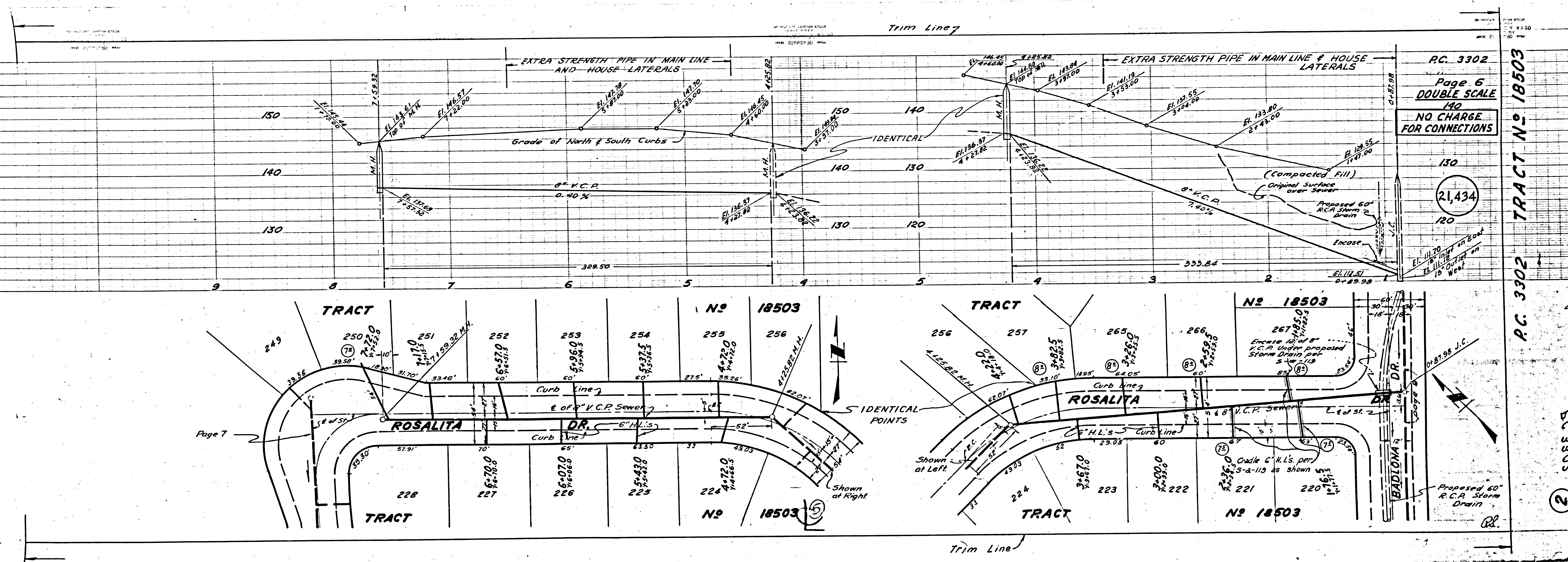
Page 6  
DOUBLE SCALE

NO CHARGE FOR CONNECTIONS

21,434

TRACT N<sup>o</sup> 18503

21,434







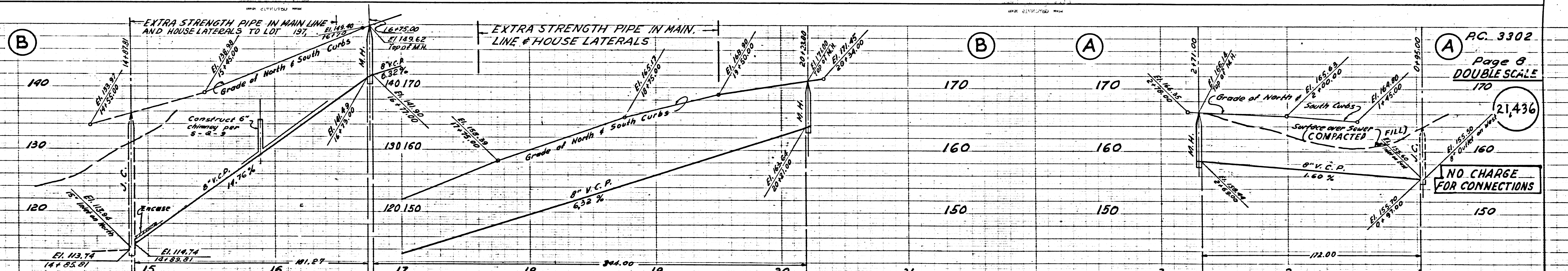


P.C. 3302

Page 9  
DOUBLE SCALE  
140

NO CHARGE  
FOR CONNECTIONS

130  
21,437

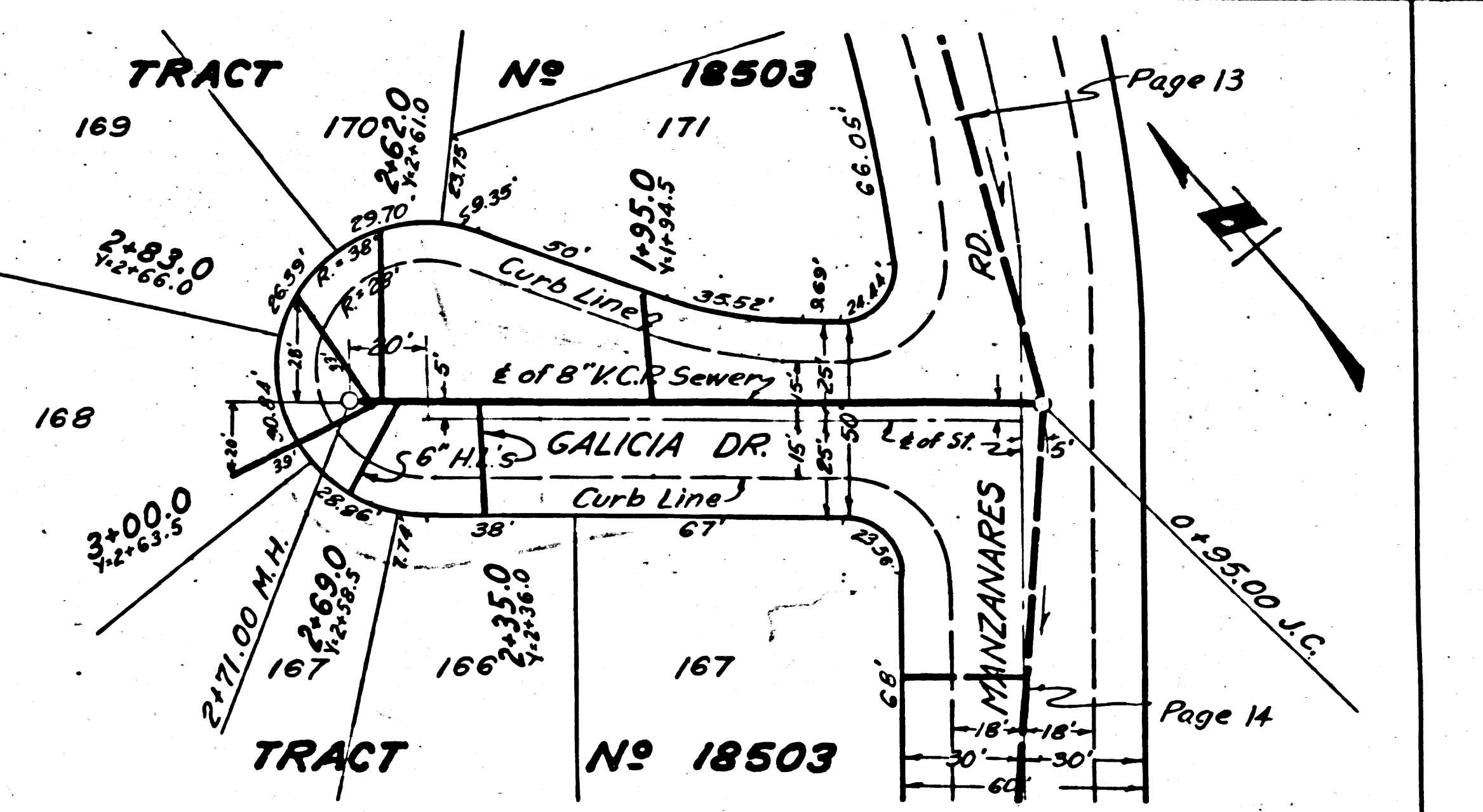
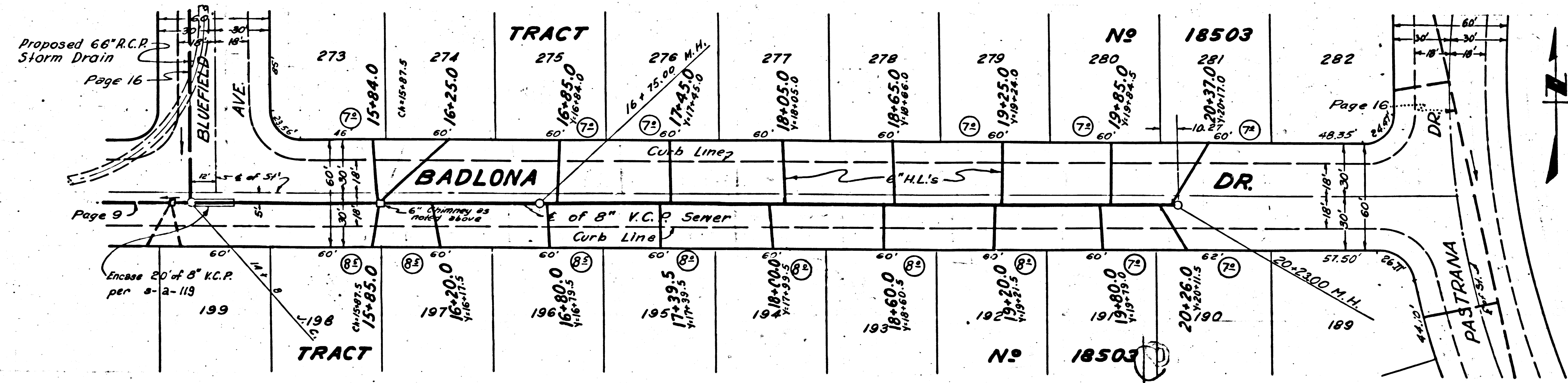


P.C. 3302

Page 8  
DOUBLE SCALE  
170

NO CHARGE  
FOR CONNECTIONS

150  
21,436

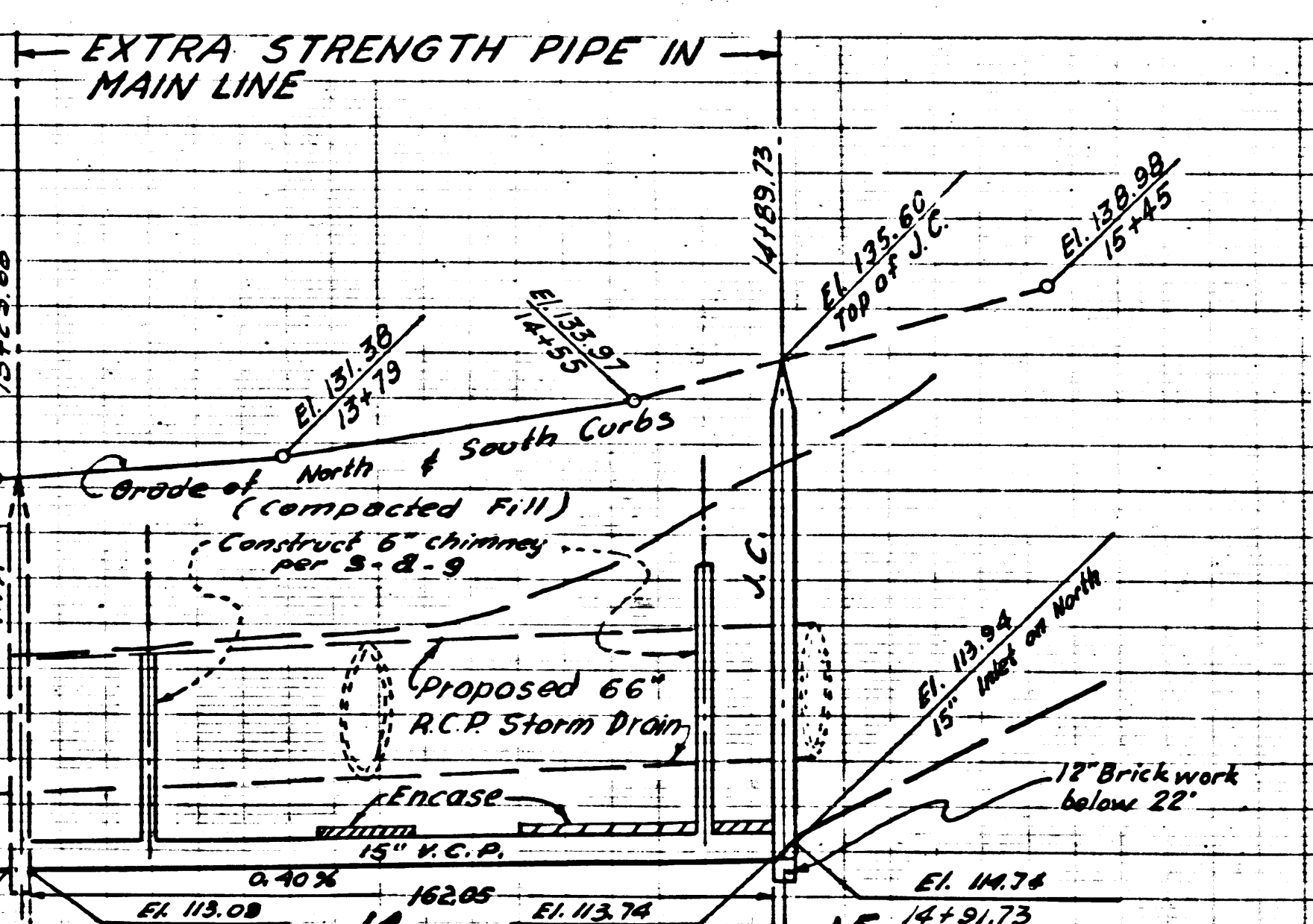
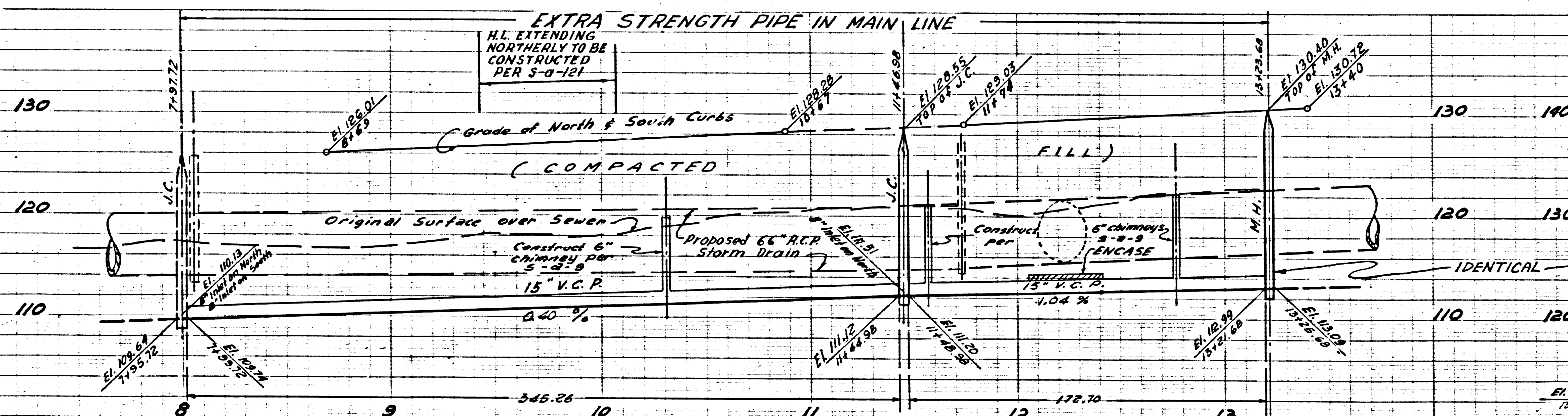


P.C. 3302

Page 10  
DOUBLE SCALE  
130

NO CHARGE  
FOR CONNECTIONS

120  
110  
21,438

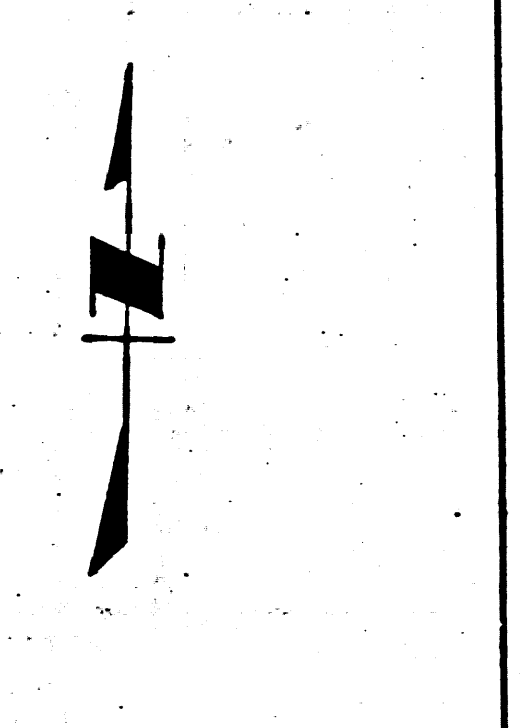
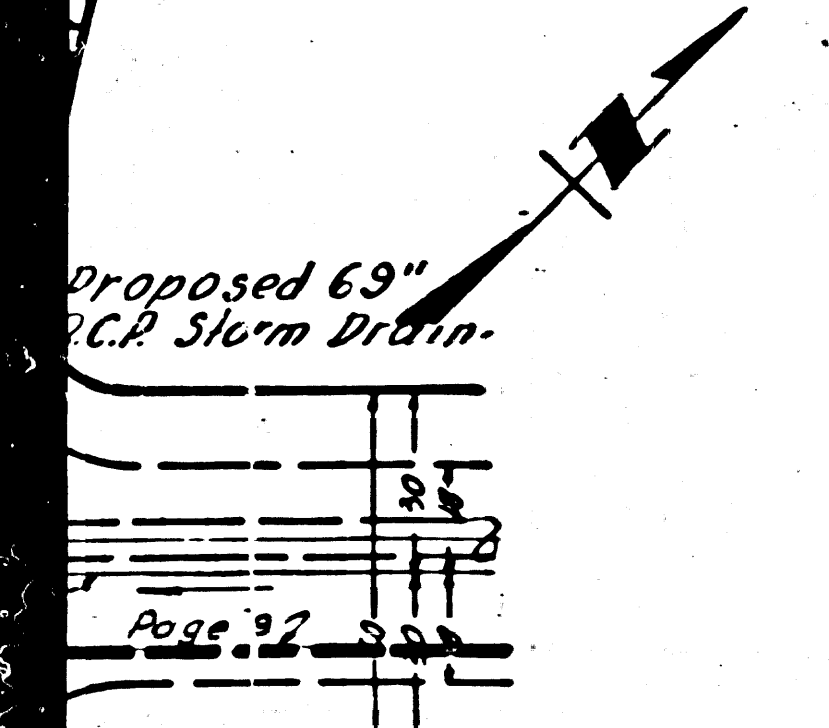
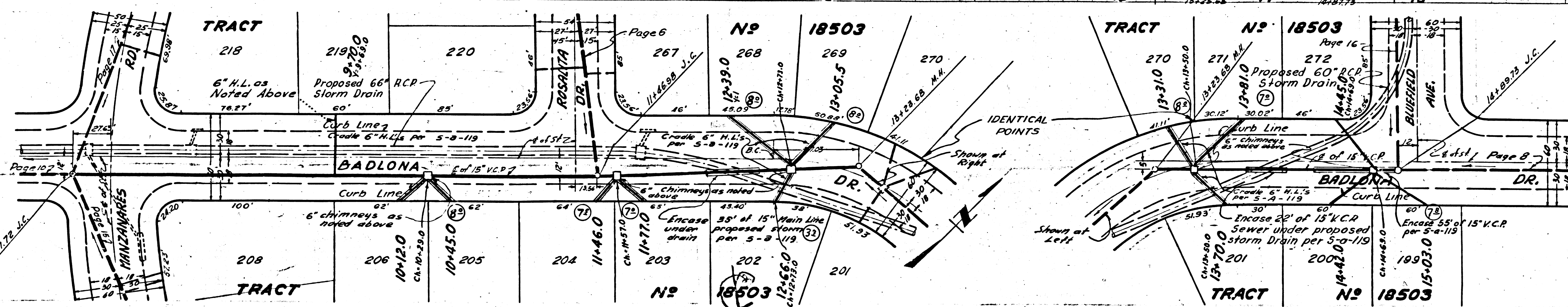


P.C. 3302

Page 9  
DOUBLE SCALE  
140

NO CHARGE  
FOR CONNECTIONS

130  
120  
21,437





PC 3302  
Page 13  
DOUBLE SCALE  
160

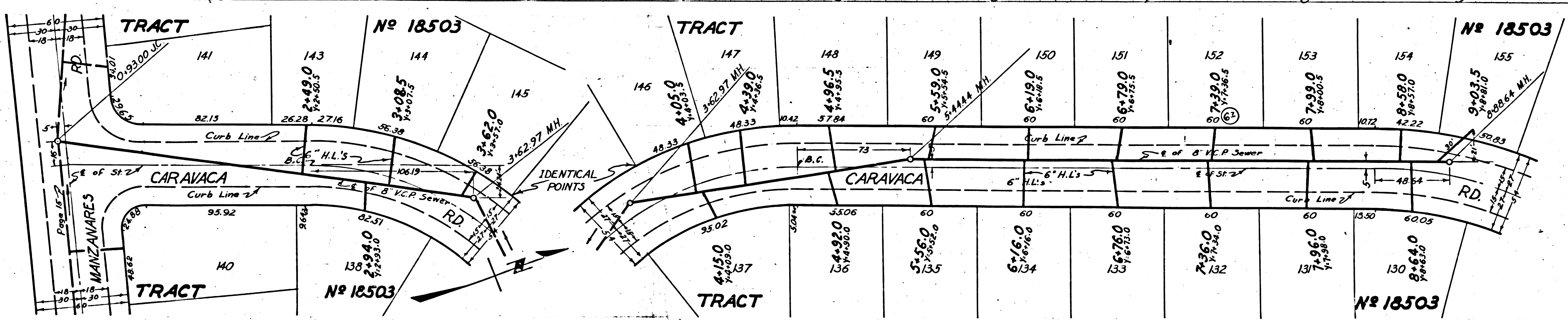
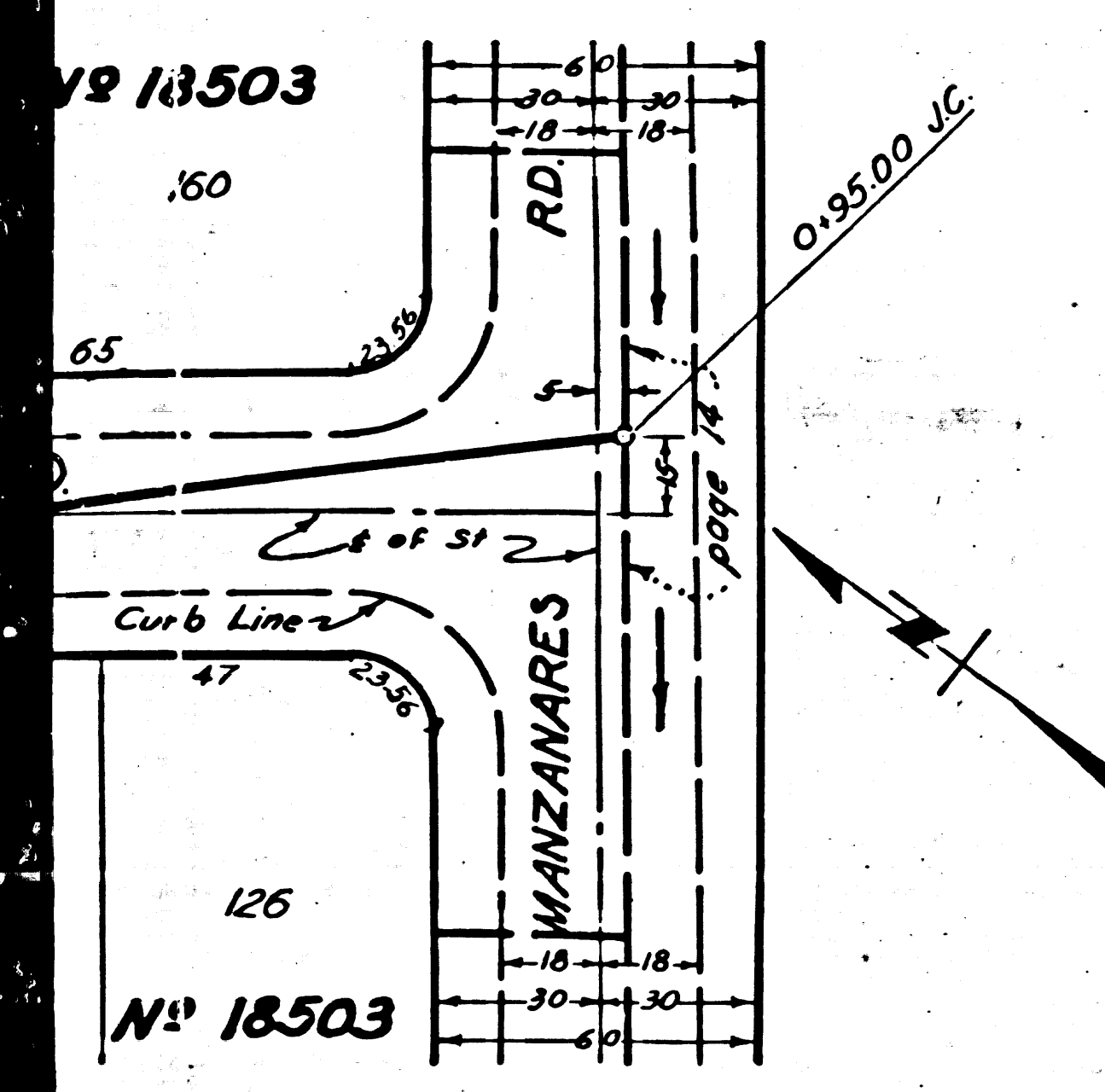
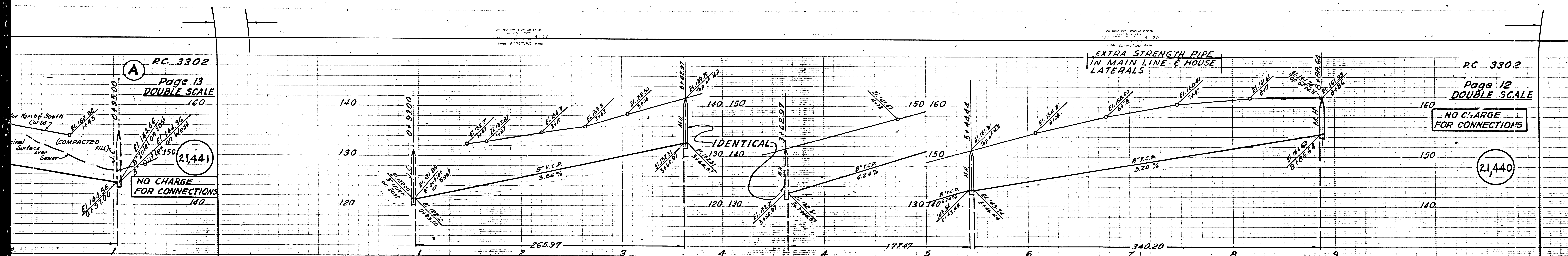
NO CHARGE  
FOR CONNECTIONS

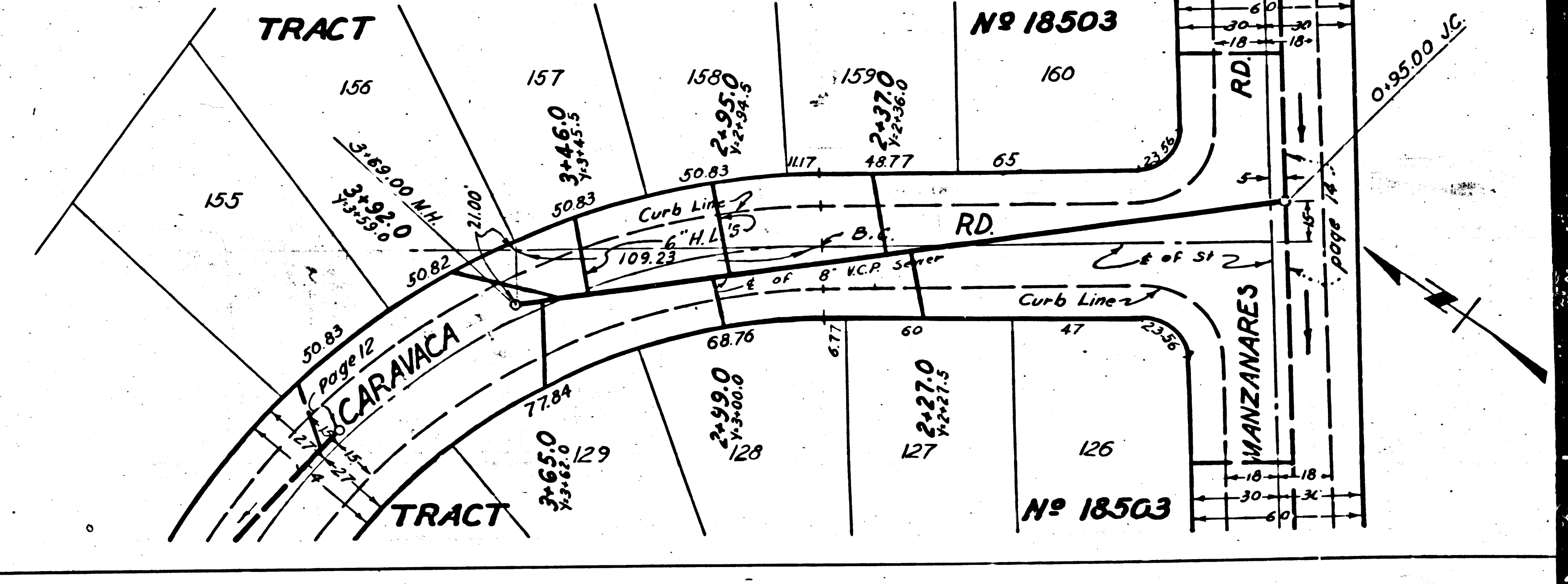
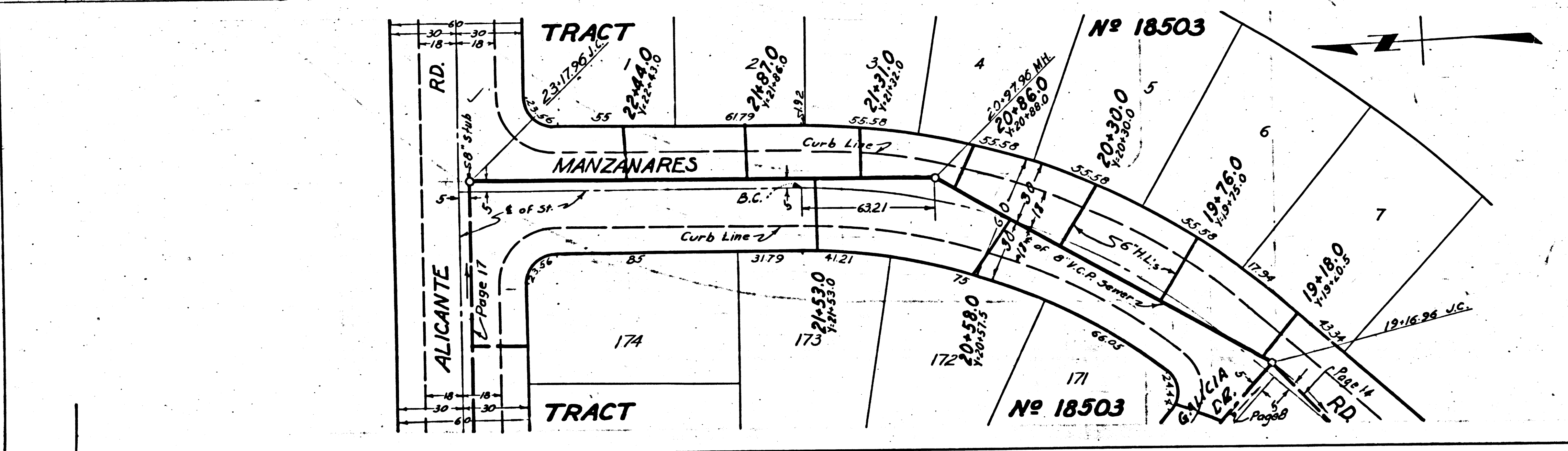
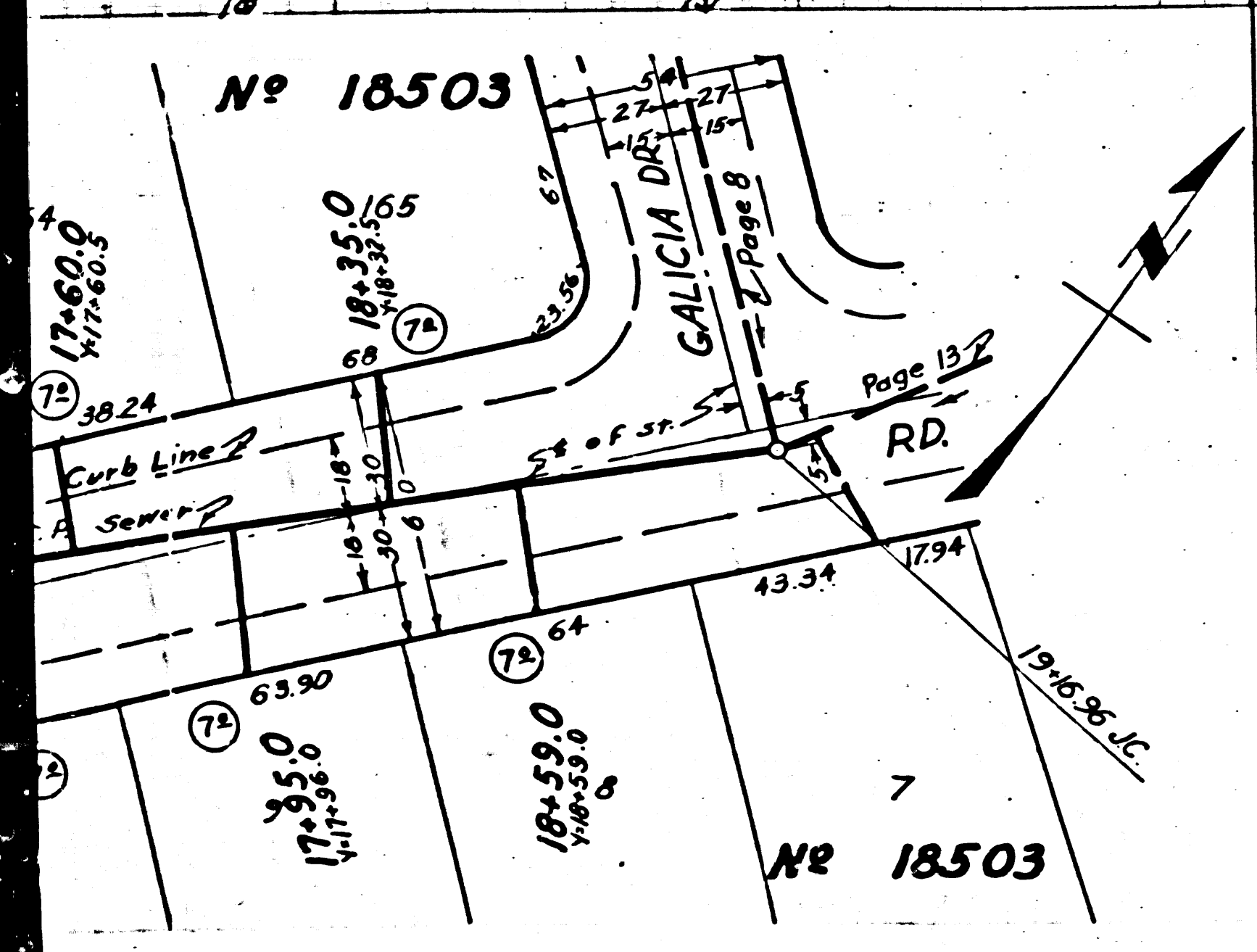
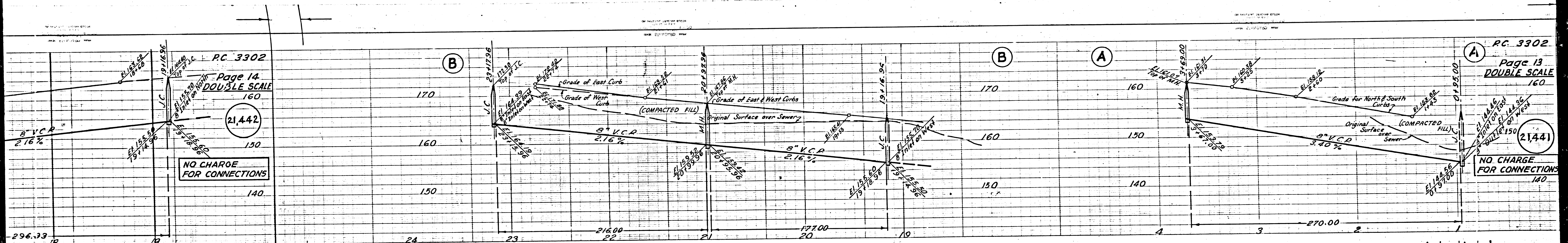
(21,441)

PC 3302  
Page 12  
DOUBLE SCALE  
160

NO CHARGE  
FOR CONNECTIONS

(21,440)

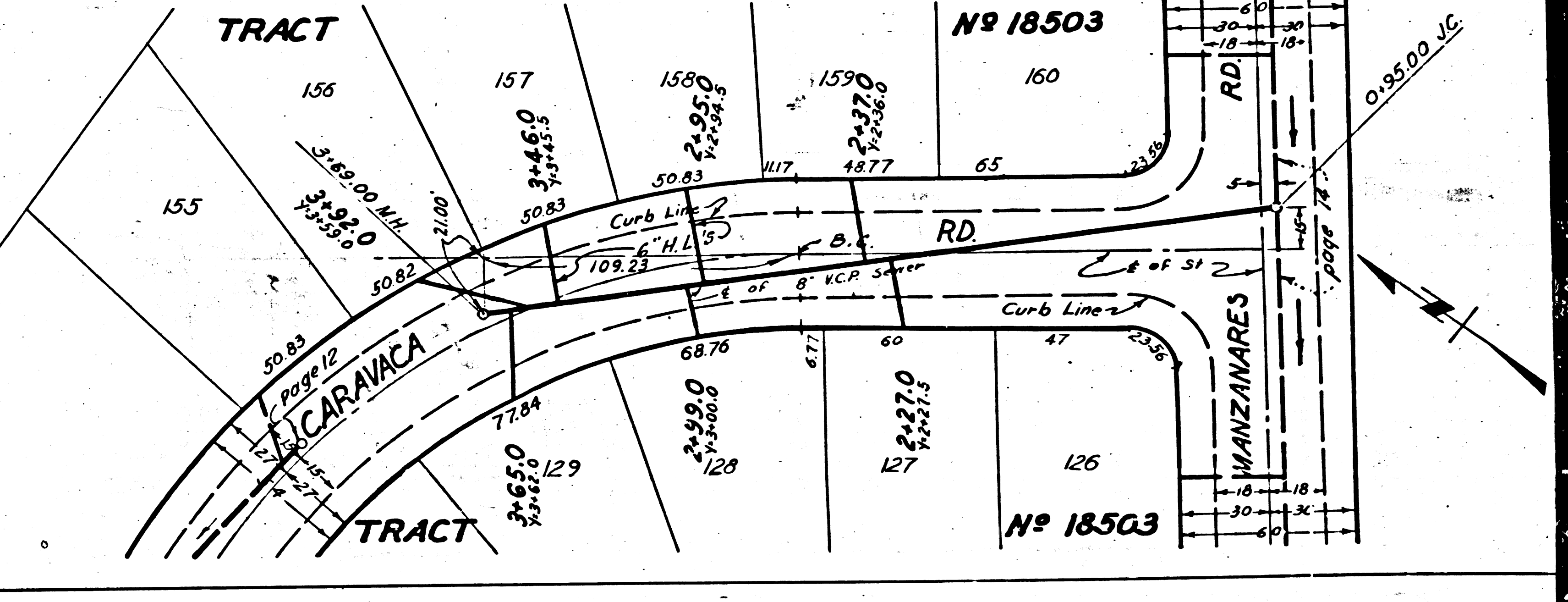
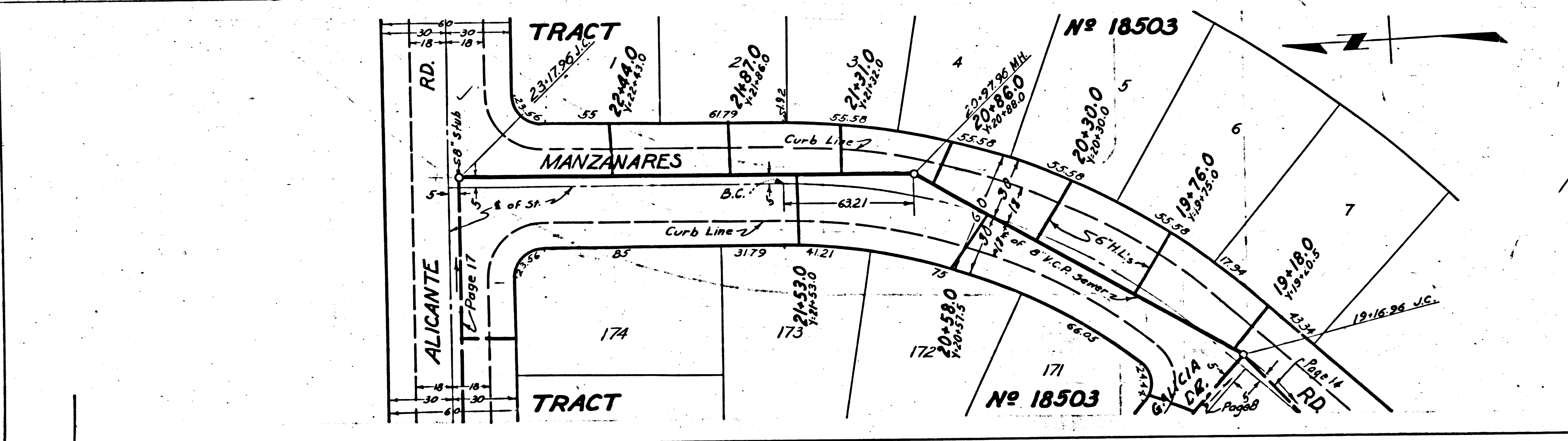
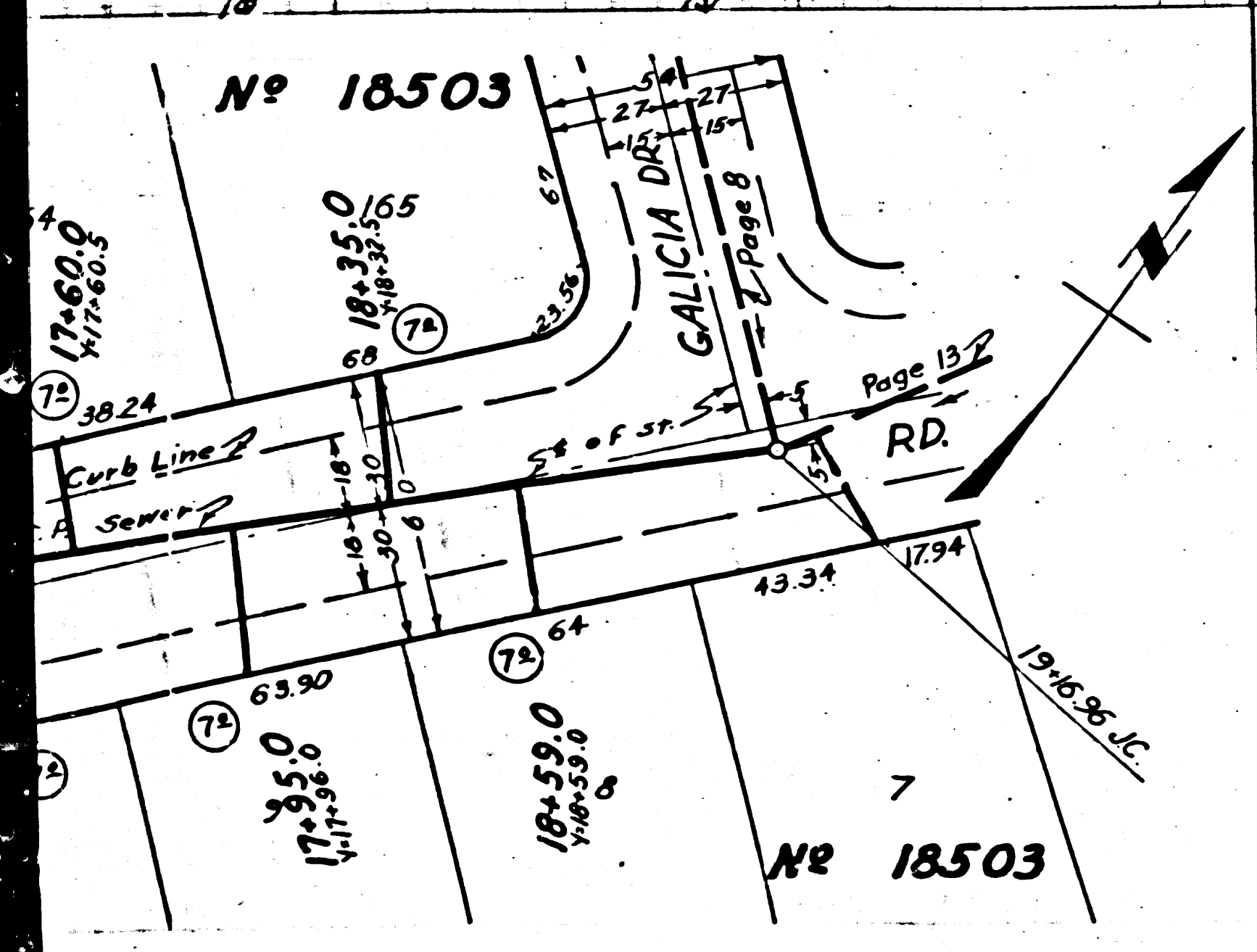
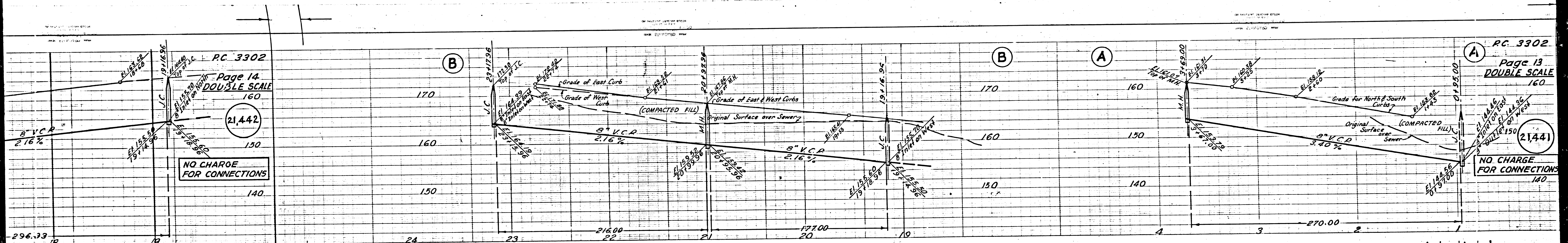




PC 3302  
 Page 14  
 DOUBLE SCALE  
 160  
 (21,442)  
 150  
 NO CHARGE  
 FOR CONNECTIONS  
 140

PC 3302  
 Page 13  
 DOUBLE SCALE  
 160  
 (21,441)  
 150  
 NO CHARGE  
 FOR CONNECTIONS  
 140

03



PC 3302  
 Page 13  
 DOUBLE SCALE  
 160  
 (21441)  
 NO CHARGE FOR CONNECTIONS  
 140

03