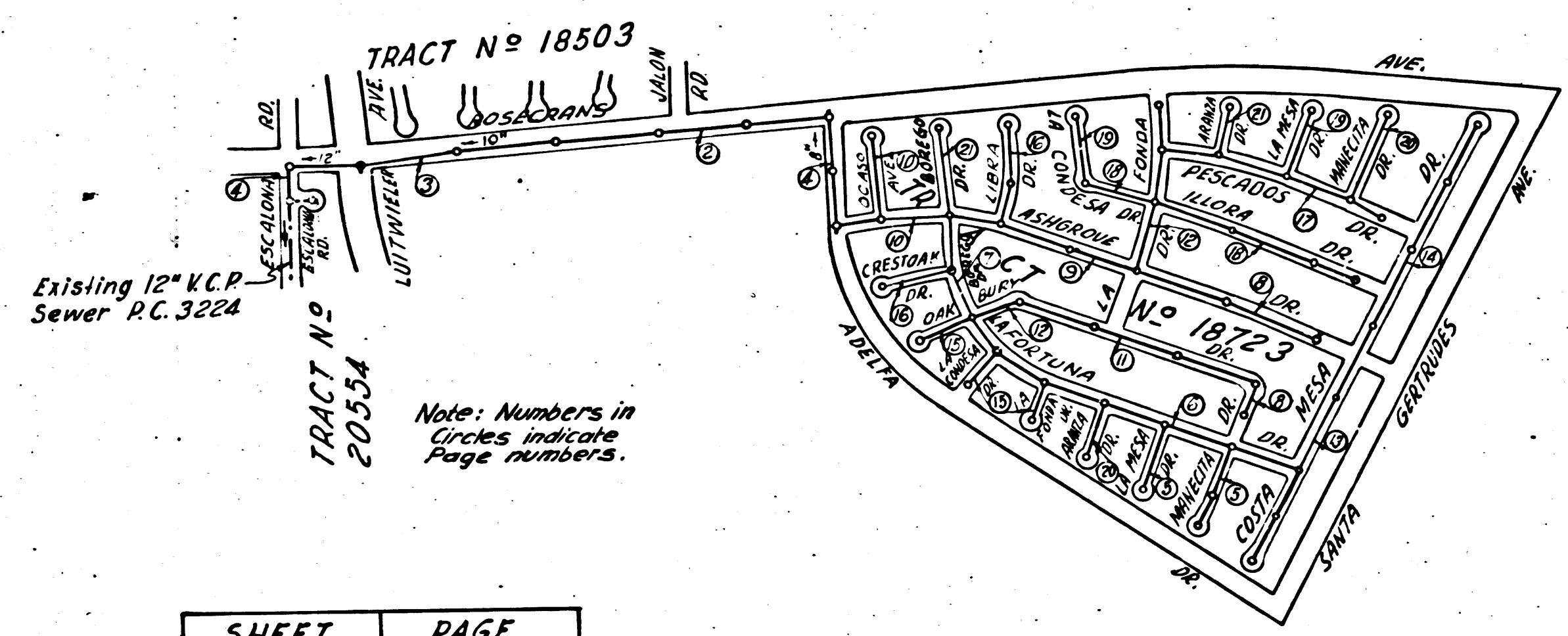


Bench Mark: B.M. 3-2 Std. Co. Surv. Mon. marked 23123 set in conc. 16" below surface on approx E of Luitwieler Ave. 72' N. of E of Stage Rd. in well protected by cast iron cover, per C.S.F.B. 1204-6 L. A. Co. 1952 Adj. El. = 109.862

BELLFLOWER BLDG. DIST. No 4

- NOTE:
Provide stakes on the property lines or property lines produced at right angles to the sewer line at the center line of each manhole.
No representative of the County Engineer will survey or layout any portion of the work. The owner or his authorized representative shall furnish the County Engineer with grade sheets and stations for all house laterals and Y branches and shall provide stakes for them at their proper locations with stationing plainly marked. Any change in location shall be requested in writing by the owner or his representative.
- No revisions shall be made in these plans without the approval of the County Engineer.
1. Use standard manhole frames and covers, S-a-117.
 2. Use standard strength pipe except as noted.
 3. Use cement mortar for all vitrified clay pipe joints.
 4. Resurface all trench within paved area to meet L.A. County Road Dept. or Calif. State Highway Dept. requirements in accordance with permit.
 5. Encase four feet of sewer at points of interference with poles, S-a-119.
 6. House laterals to be constructed with inverts at property line.....G.....feet below curb grade except as noted.
 7. All structures shall be brick sewer structures, S-a-104.
- B. For allowable leakage test, use Formula No..... Specs., Sec. 51.
C. The Contractor shall satisfy himself of all substructures and shall be responsible for their location



| SHEET | PAGE |
|-------|-------|
| 1 | 1-5 |
| 2 | 6-10 |
| 3 | 11-15 |
| 4 | 16-18 |
| 5 | 19-21 |

INDEX MAP
SCALE 1" = 600'
TRACT No 18723
P.C. 3315

CONNECTION CHARGES AS INDICATED
L. Curtis 2-3-55

checked 7-7-55 W. Hansen

PROFILE, ALIGNMENT AND GRADE OF
SANITARY SEWERS
TO BE CONSTRUCTED IN
TRACT No 18723

PRIVATE CONTRACT NO. 3315
W. S. 34
FIVE SHEETS
JANUARY 1955

Scale: VERT. 1" = 4'
HORIZ. 1" = 40'

PREPARED IN THE OFFICES OF
WM. H. FAIR, JR.
Reg. C. E. No. 8583
FOR LEGEND SEE PLAN NO. S-a-64

P.C. 3315
Page 1

20,787

NOTE:
Grades to which this improvement is to be constructed are shown on plans and profiles. Grade points for top of curbs, center line of streets, or center line of alleys are shown by circles on profiles. At all points between designated points the grade shall be established so as to conform to a straight line drawn between said designated points.
Elevations are in feet above U.S.G.S. datum or mean sea level.
This drawing and the data hereon are hereby made a part of the specifications.
Work shall be constructed according to specifications on file in the office of the County Engineer and shall be prosecuted only in the presence of the County Engineer.
Before work can be started, the contractor must obtain a permit to excavate in County streets from the L.A. County Road Dept., 108 W. 2nd St. and make a deposit with the County Engineer, 733 L.A. County Engineering Building, sufficient to cover the cost of construction inspection and record plans.
Approval of this plan by the County of Los Angeles does not constitute a representation as to the accuracy of the location of or the existence or non-existence of any underground utility, pipe, or structure within the limits of this project. This note applies to all sheets.
If work is to be done in a State Highway, a permit must be obtained from the State of California, Division of Highways, 120 South Spring Street.

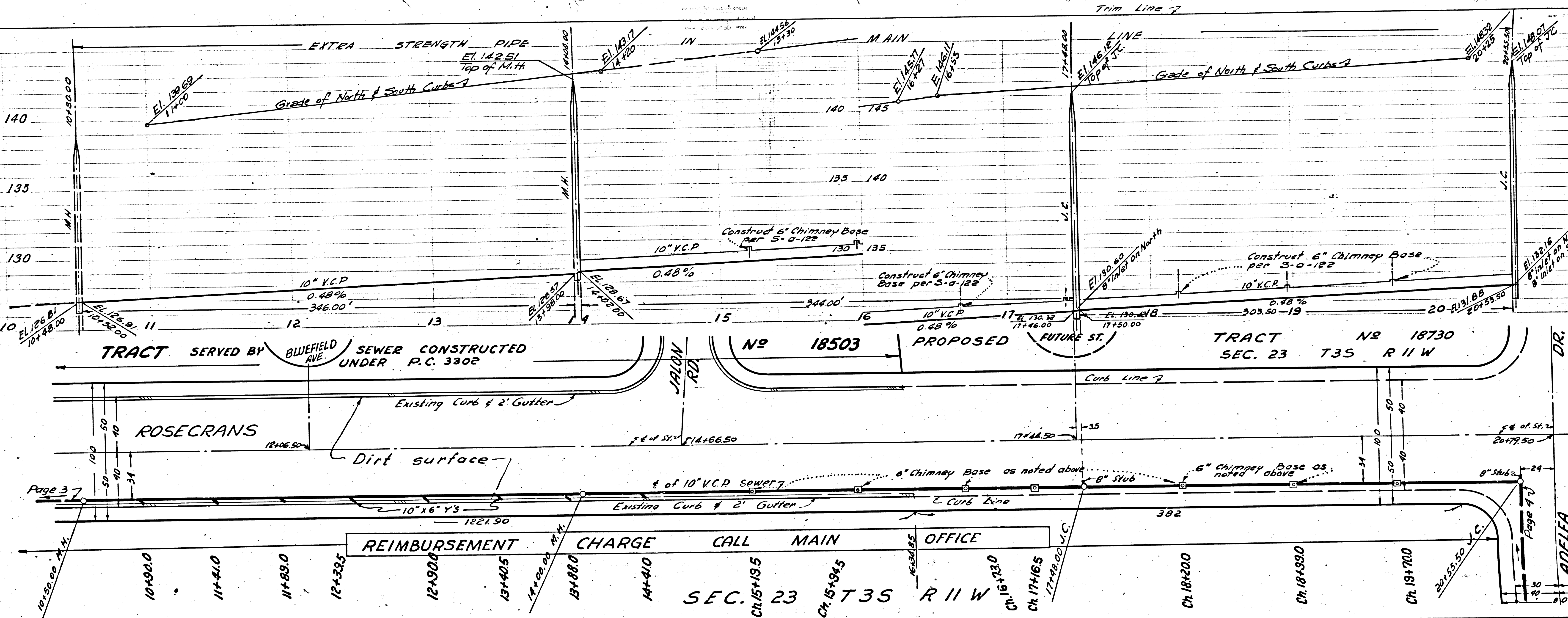
COUNTY OF LOS ANGELES, CALIFORNIA
Approved, William J. Fox, County Engineer
Approved, A. M. Rown
CHIEF ENGR. CO. SAN. DIST. NO. 18
By: A. P. Collins, Sanitation Engineer
By: J. H. Hoffmann, Office Engineer
Checked By: R. K. Fisher, 2-3-55
Office of County Engineer, Reg. C. E. No. 7862

TRACT No 18723
P.C. 3315

1

P.C. 3315
PAGE 3
COLLECT CHARGES AS INDICATED
20,789

P.C. 3315
PAGE 2
COLLECT CHARGES AS INDICATED
20,788

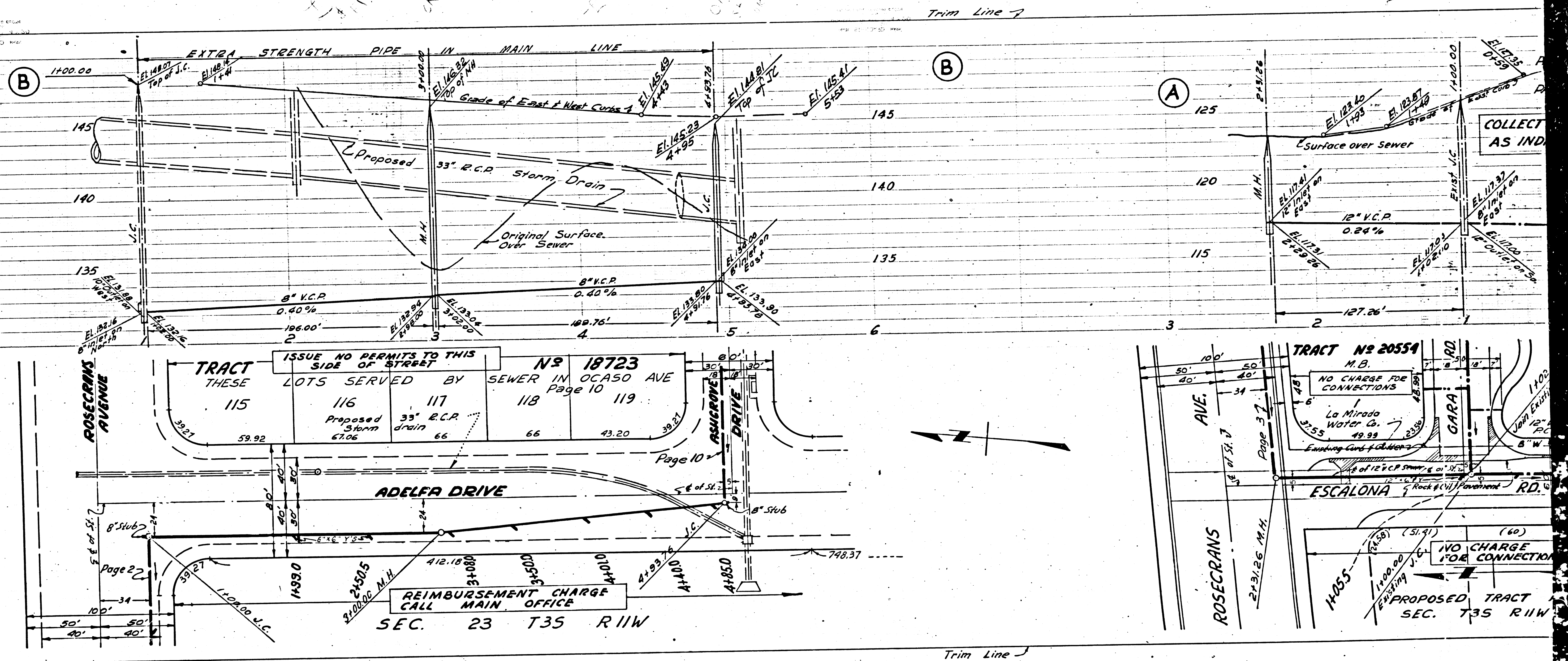
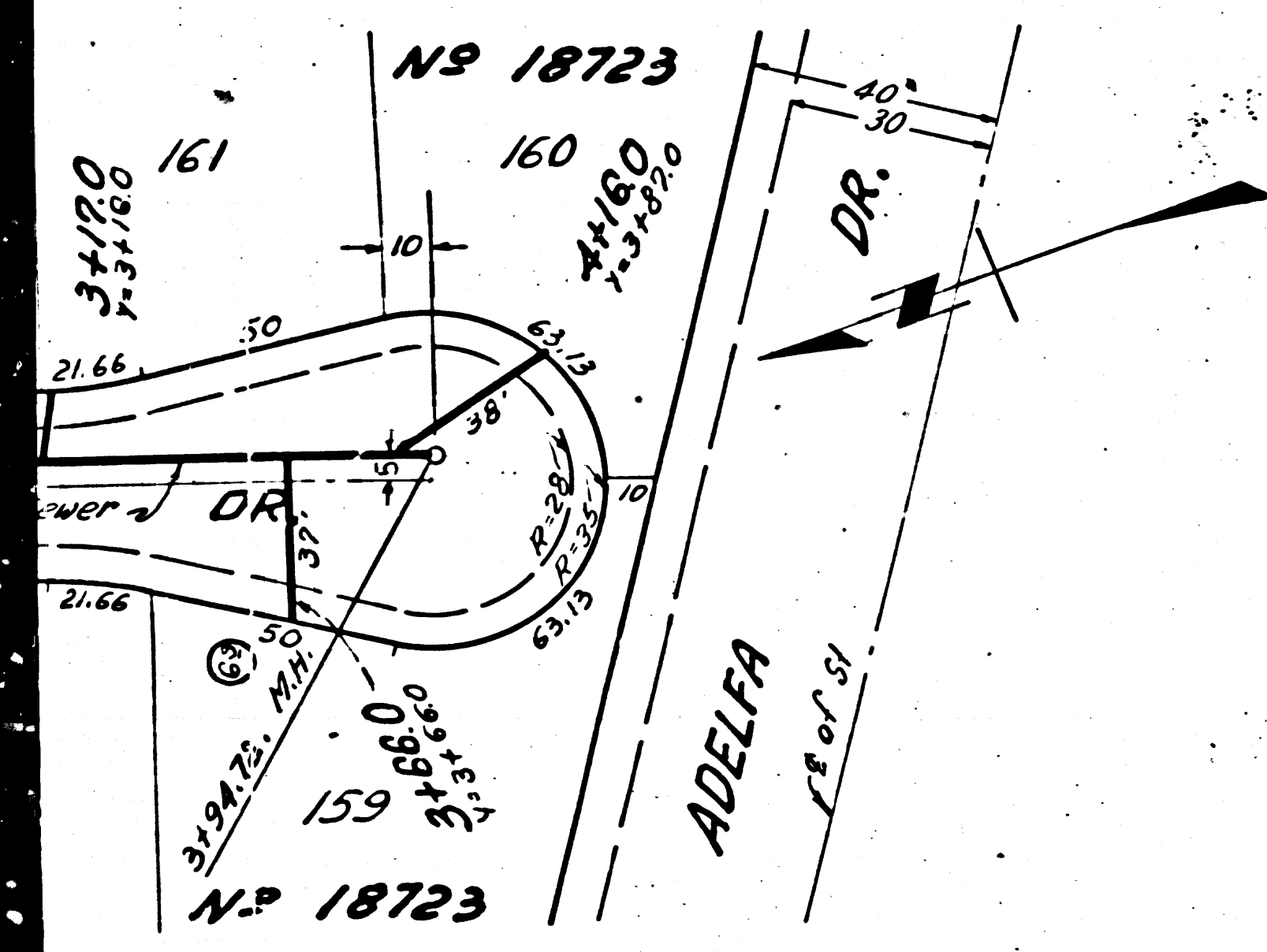


Page 2

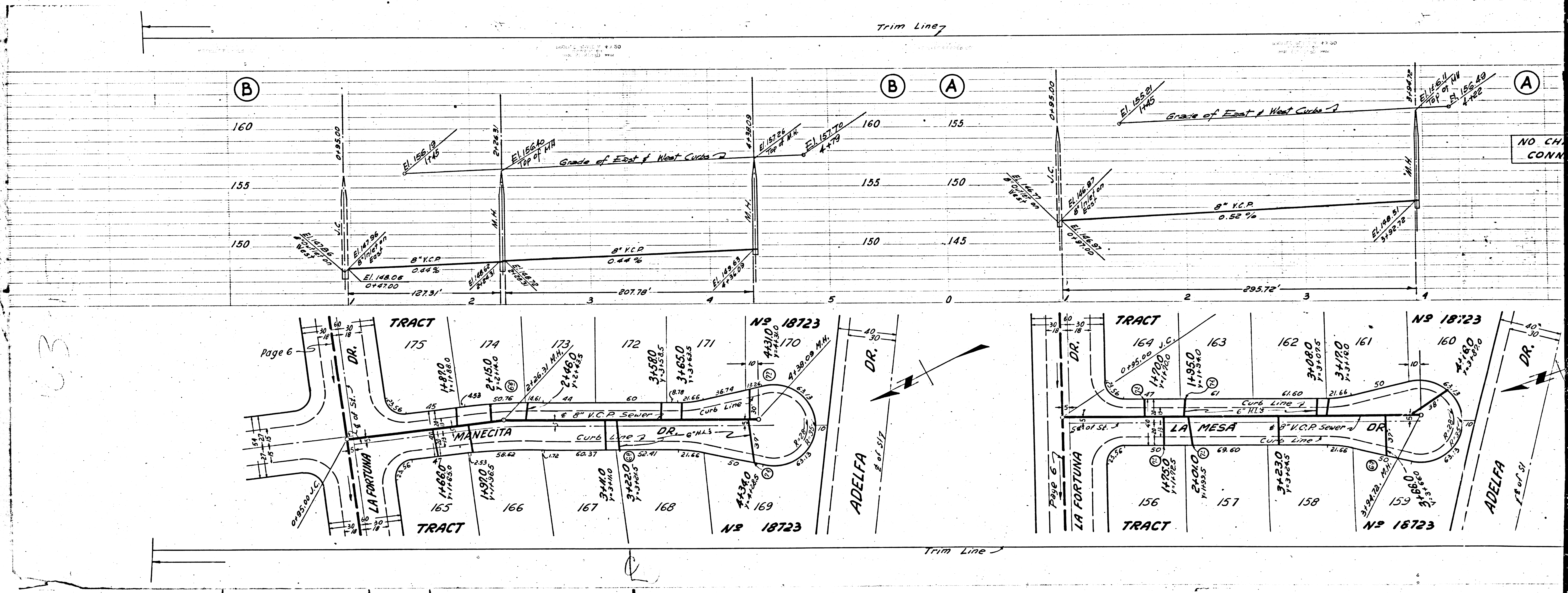
Page 3

REIMBURSEMENT CHARGE CALL MAIN OFFICE
SEC. 23 T35 R11W
Ch. 15+19.5
Ch. 15+94.5
Ch. 16+25.0
Ch. 17+16.5
Ch. 17+99.0
Ch. 18+20.0
Ch. 18+38.0
Ch. 19+70.0

P.C. 3315
Page 5
NO CHARGE FOR CONNECTIONS
20,791



(7)

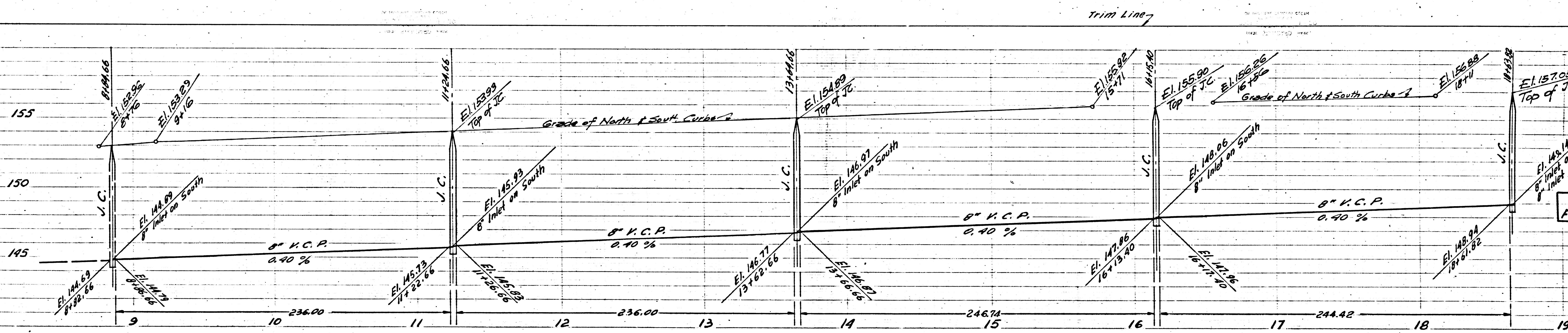


P.C. 3315

Page 7

NO CHARGE FOR CONNECTIONS

20,793

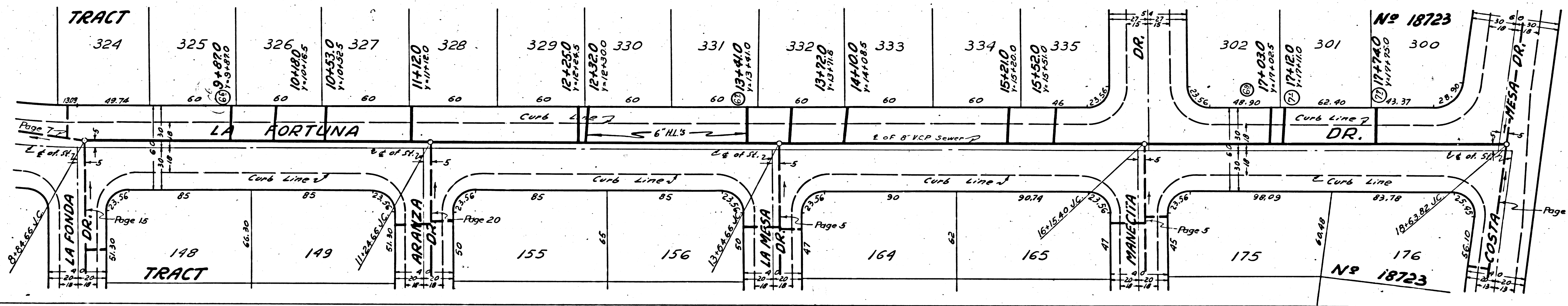


P.C. 3315

Page 6

NO CHARGE FOR CONNECTIONS

20,792



TRACT N° 18723

P.C. 3315

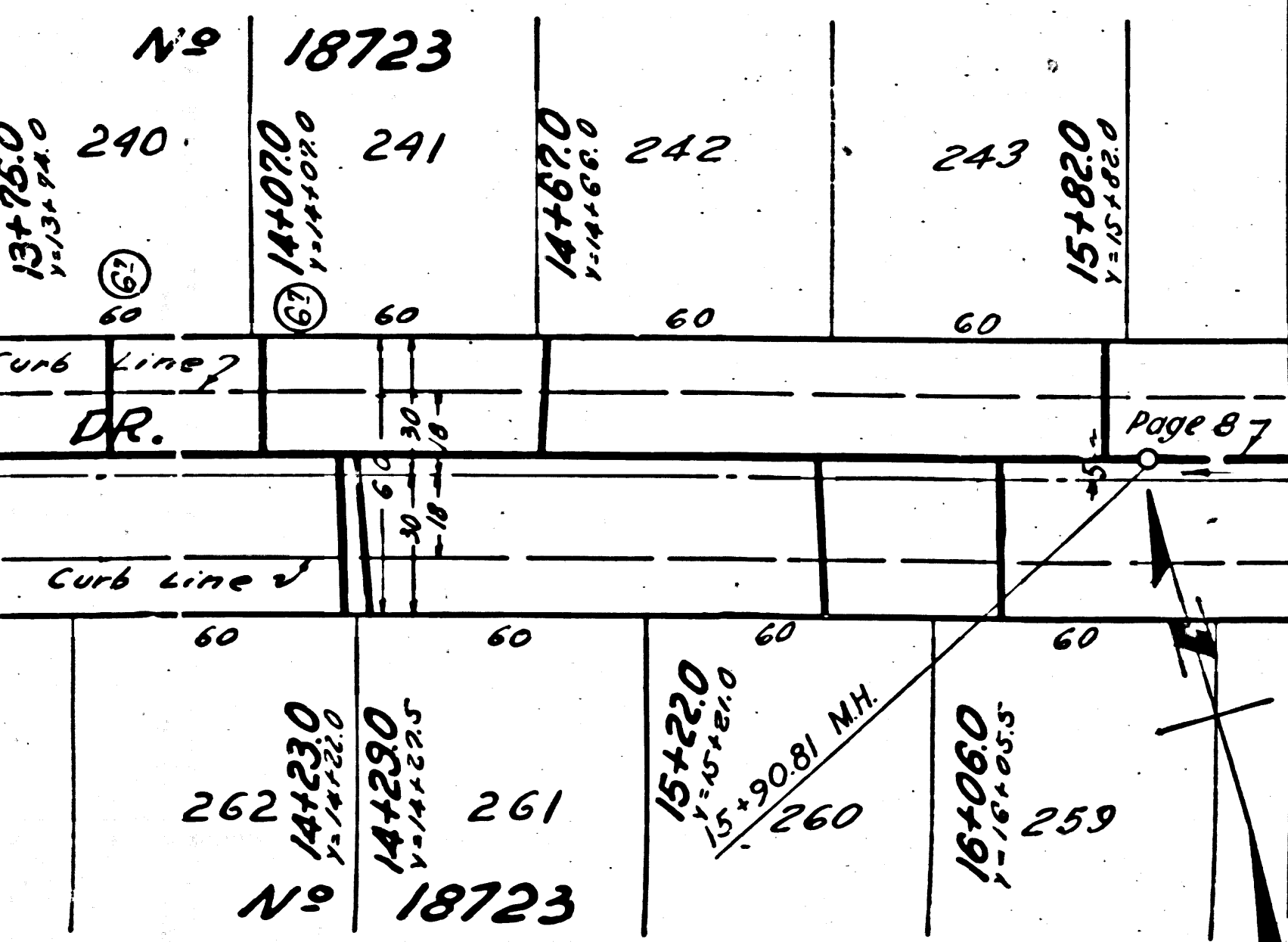
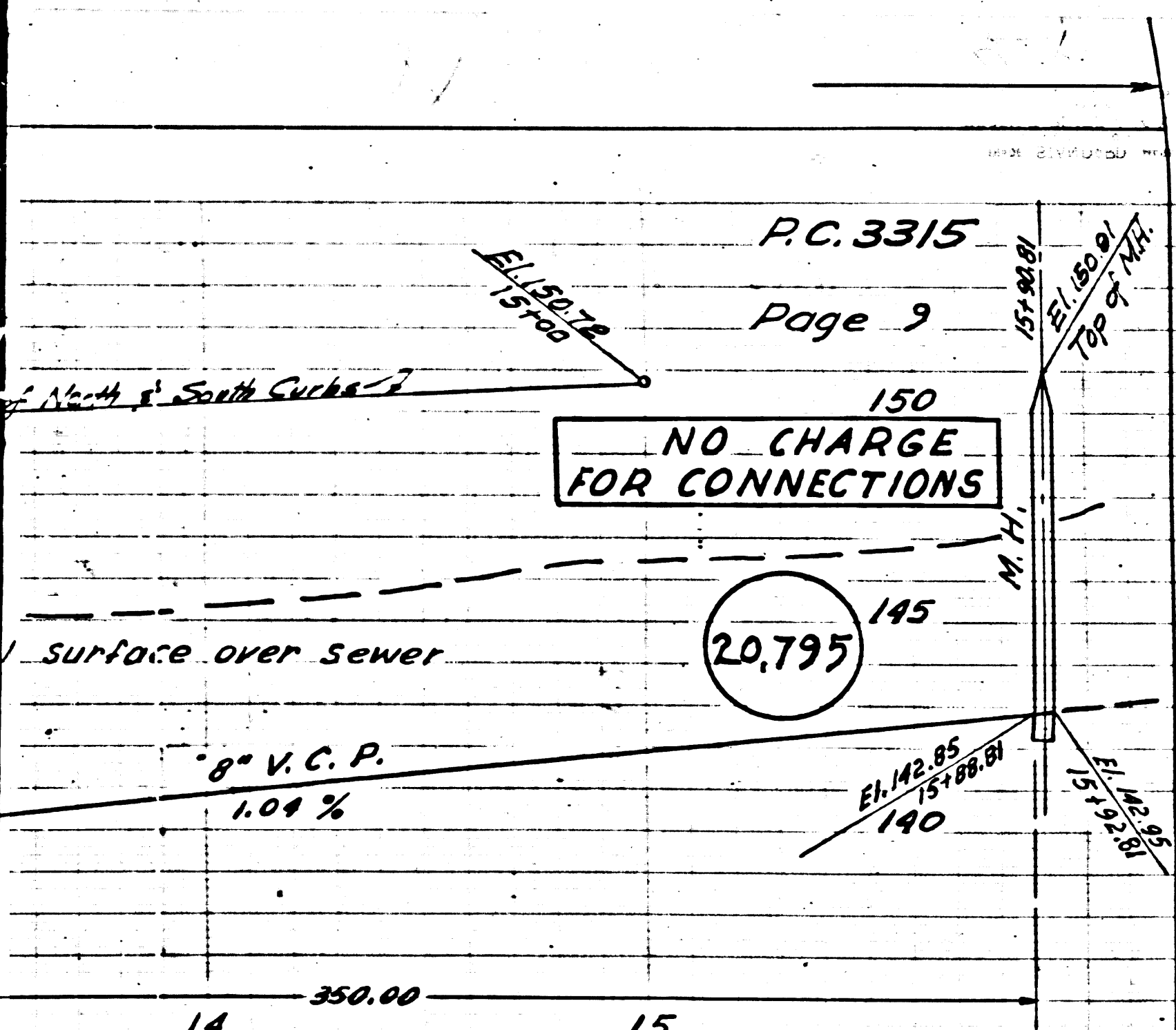
R.L.

45

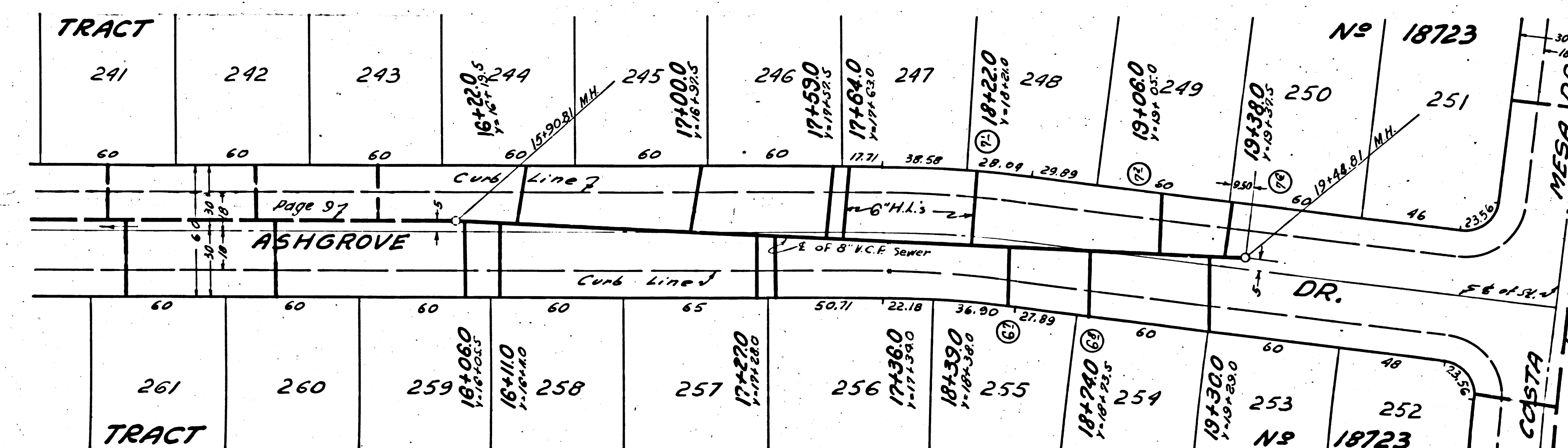
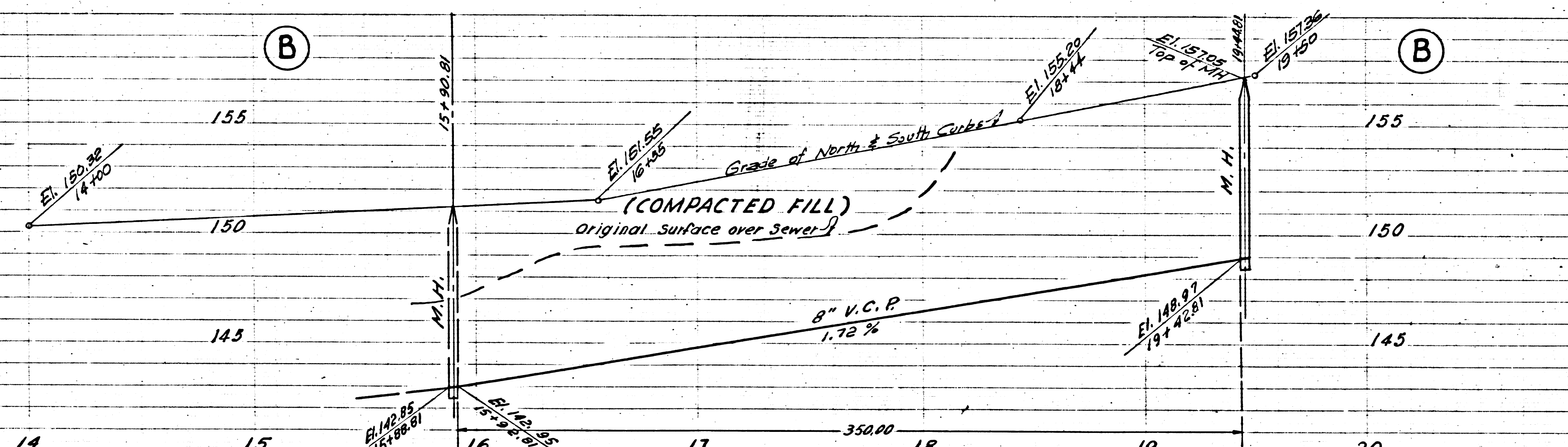
PC. 3315
Page 9

NO CHARGE
FOR CONNECTIONS

20,795

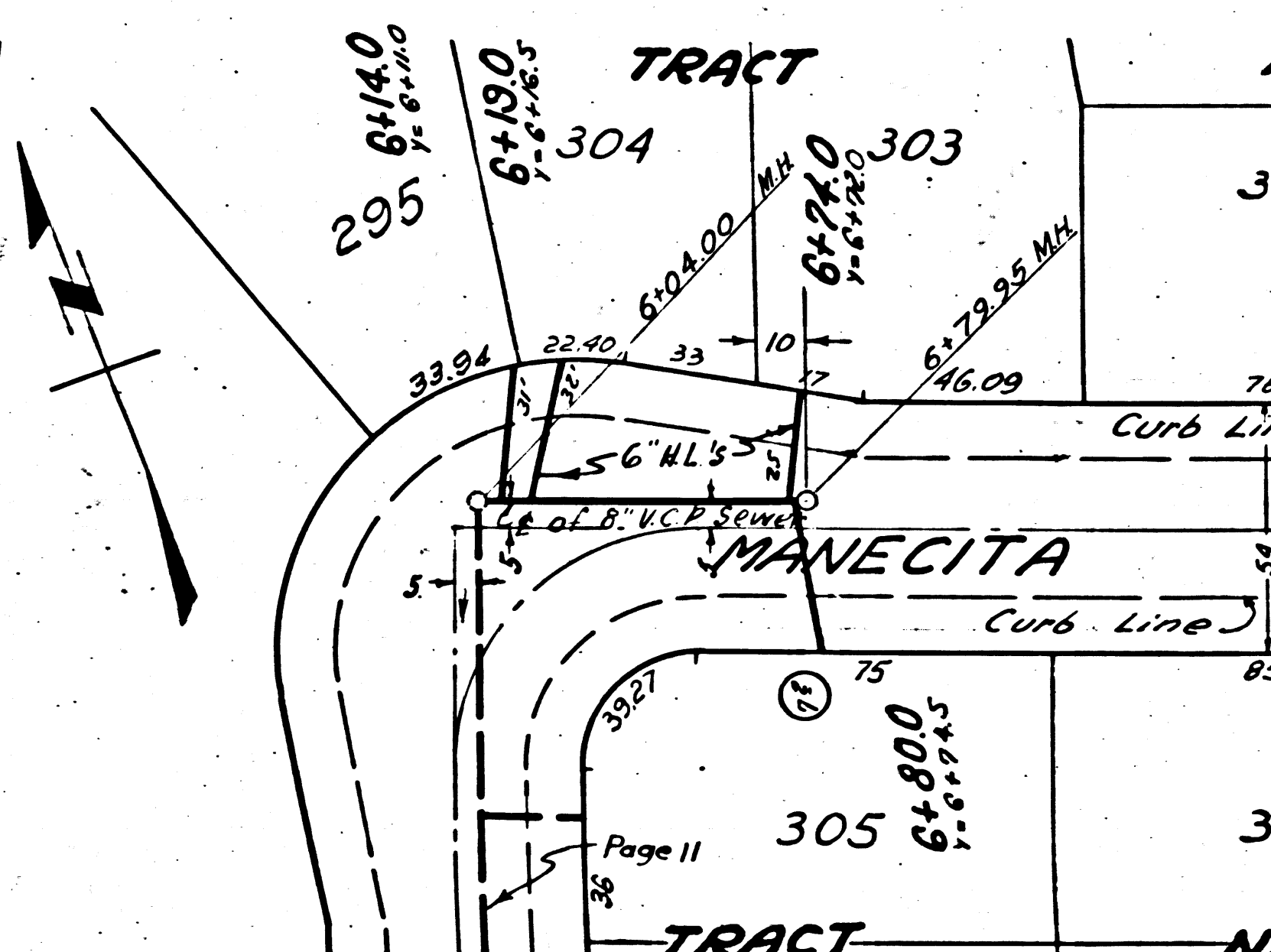
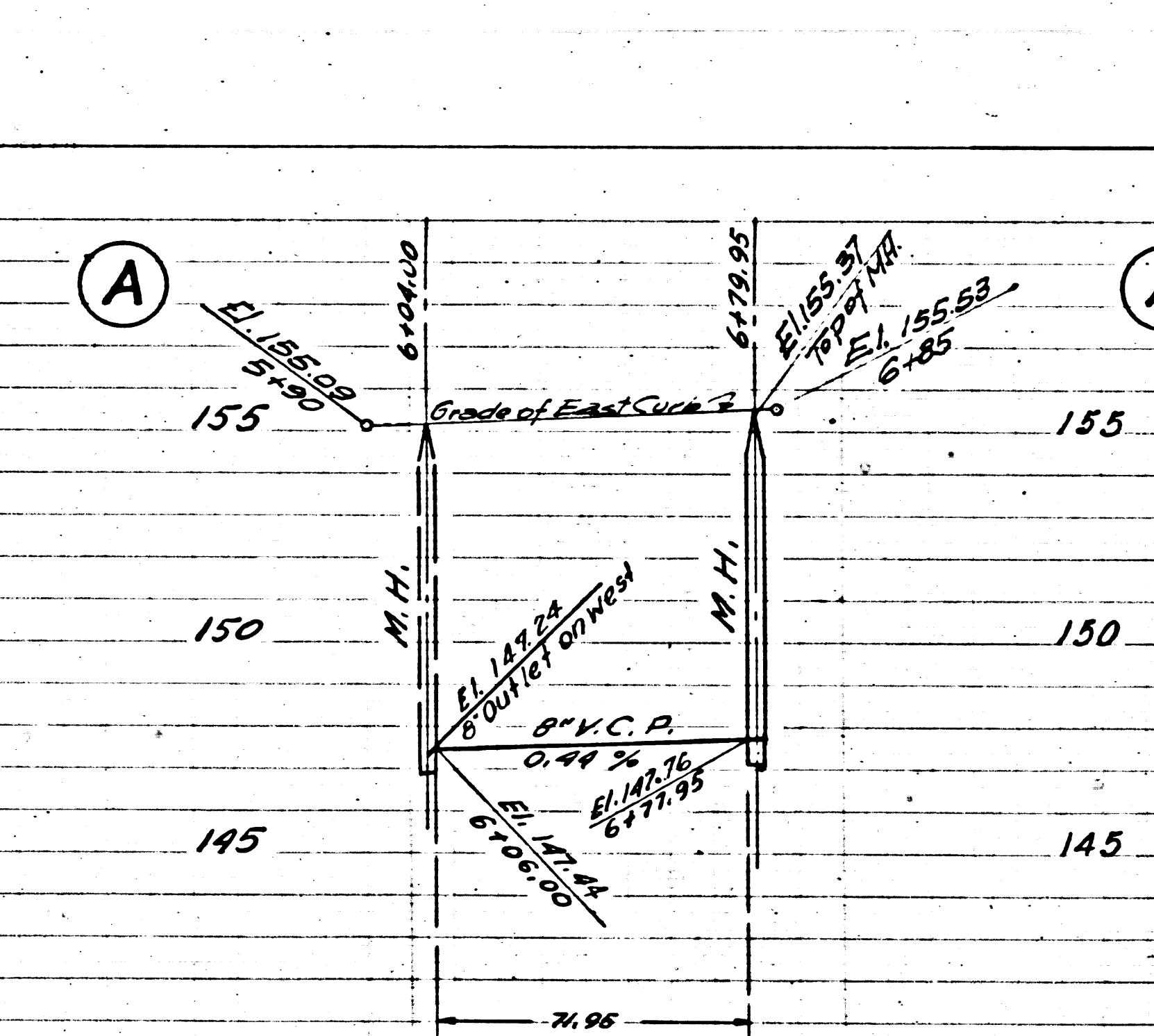


(B)



(B)

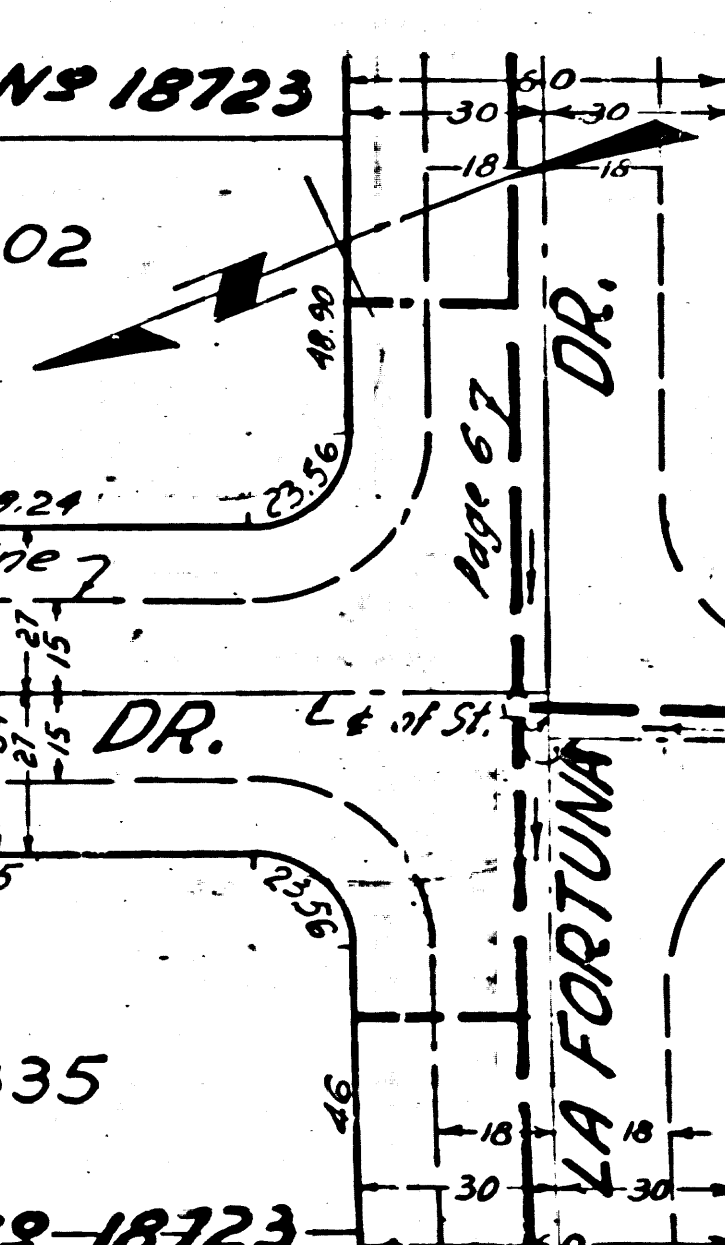
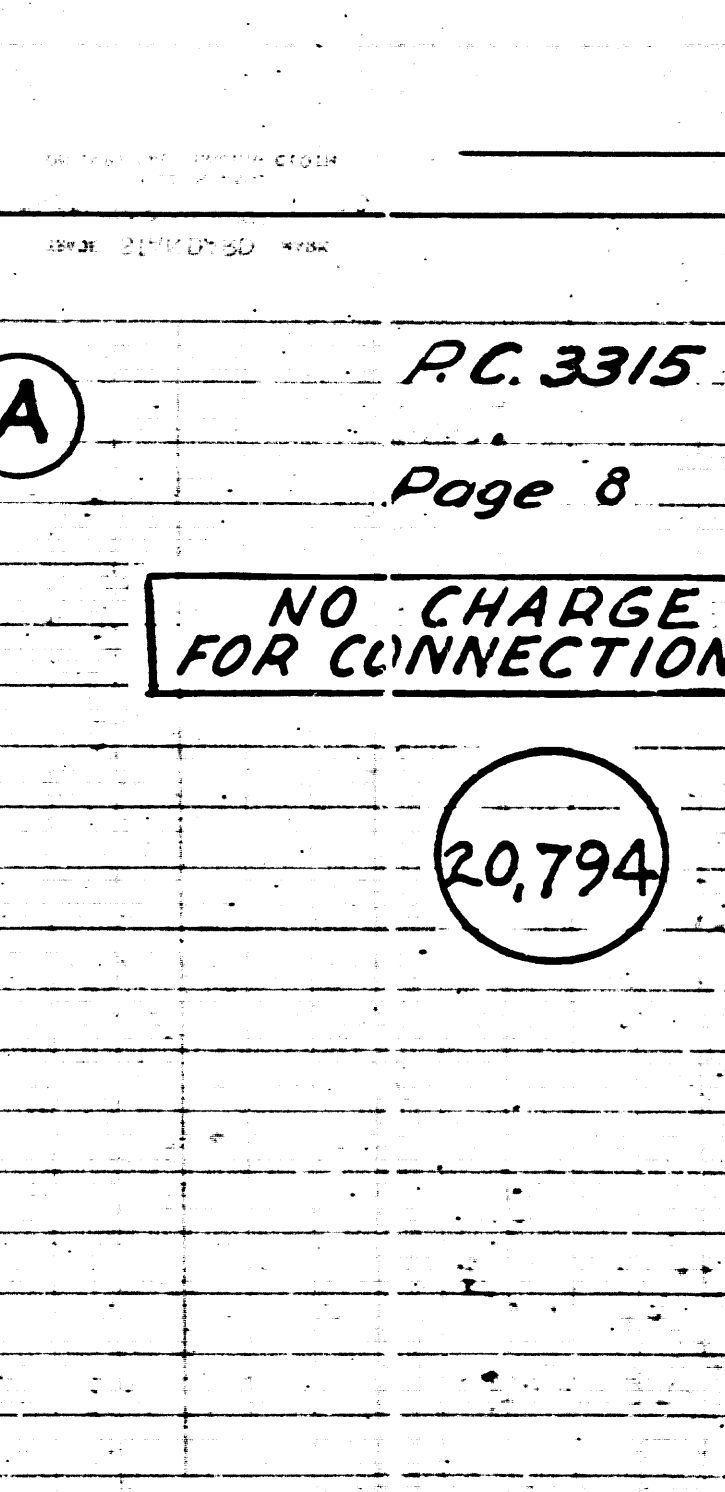
(A)



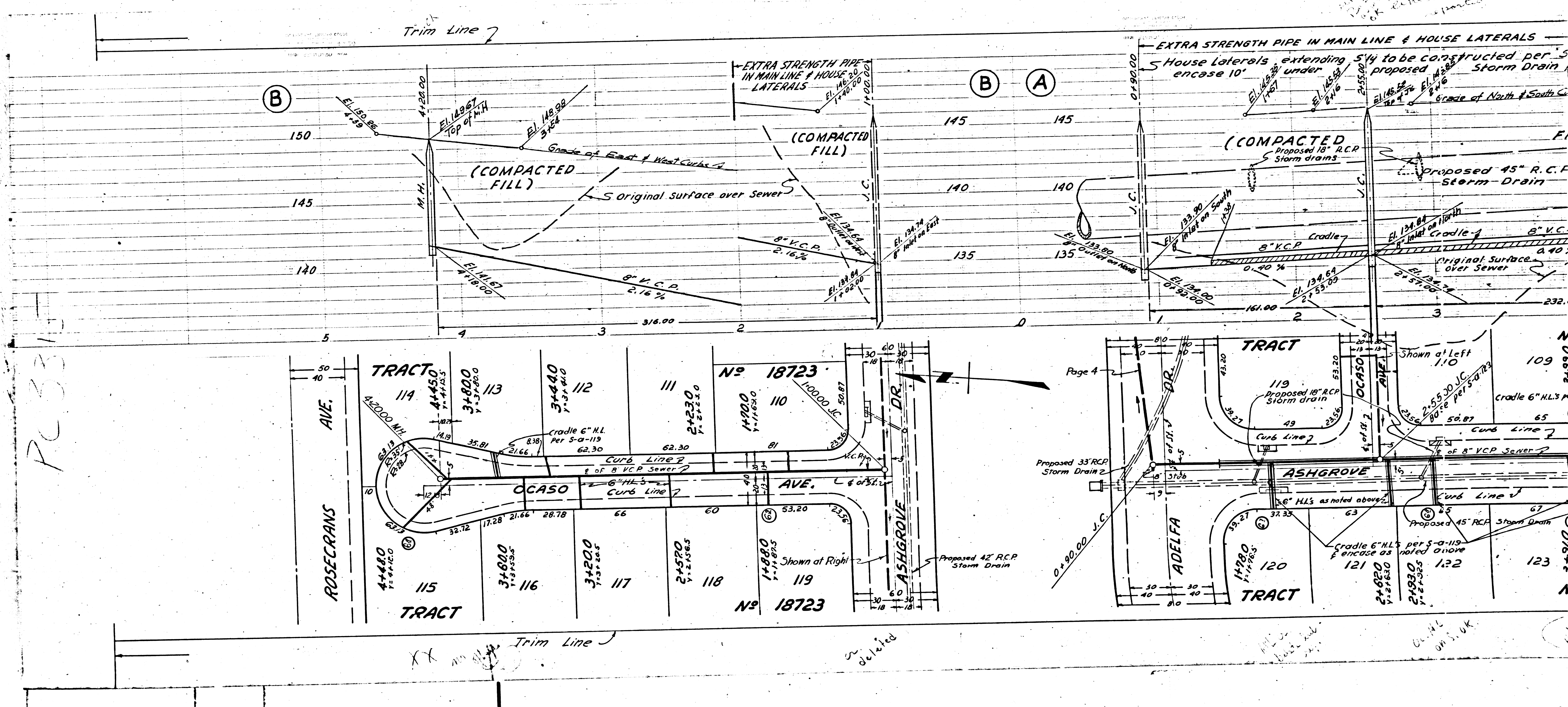
PC. 3315
Page 8

NO CHARGE
FOR CONNECTIONS

20,794



PC 331E



Page 4

deleted

PC 3315
Page 12

PC 3315
Page 11

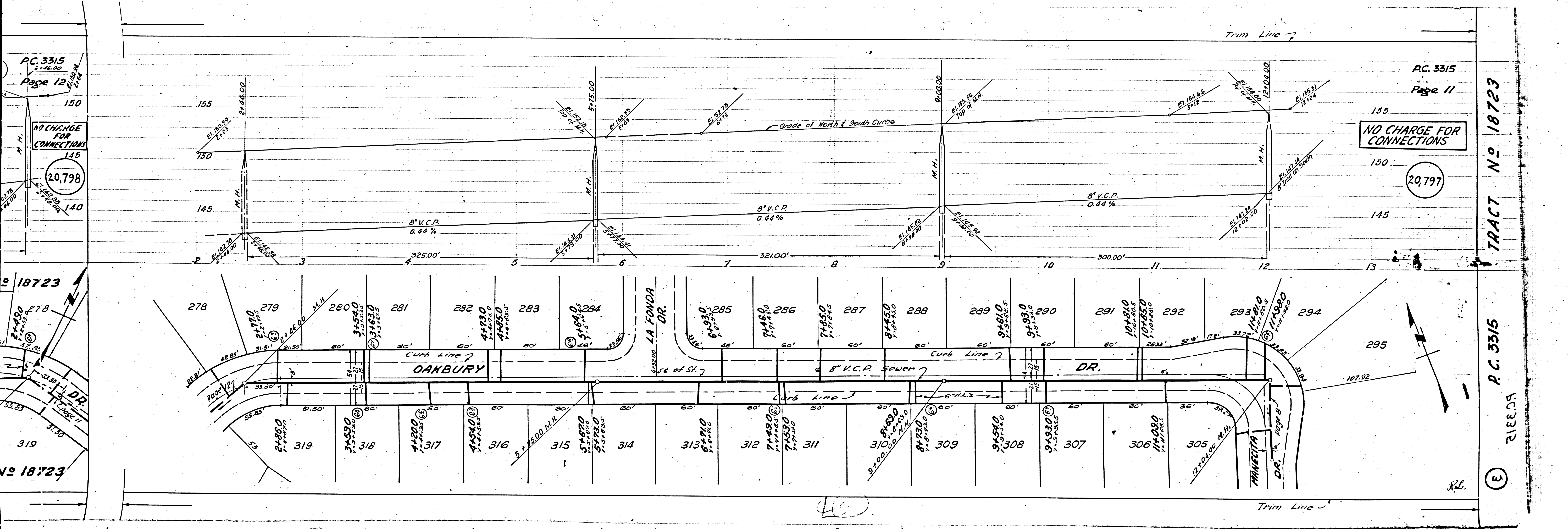
NO CHARGE FOR CONNECTIONS
20,798

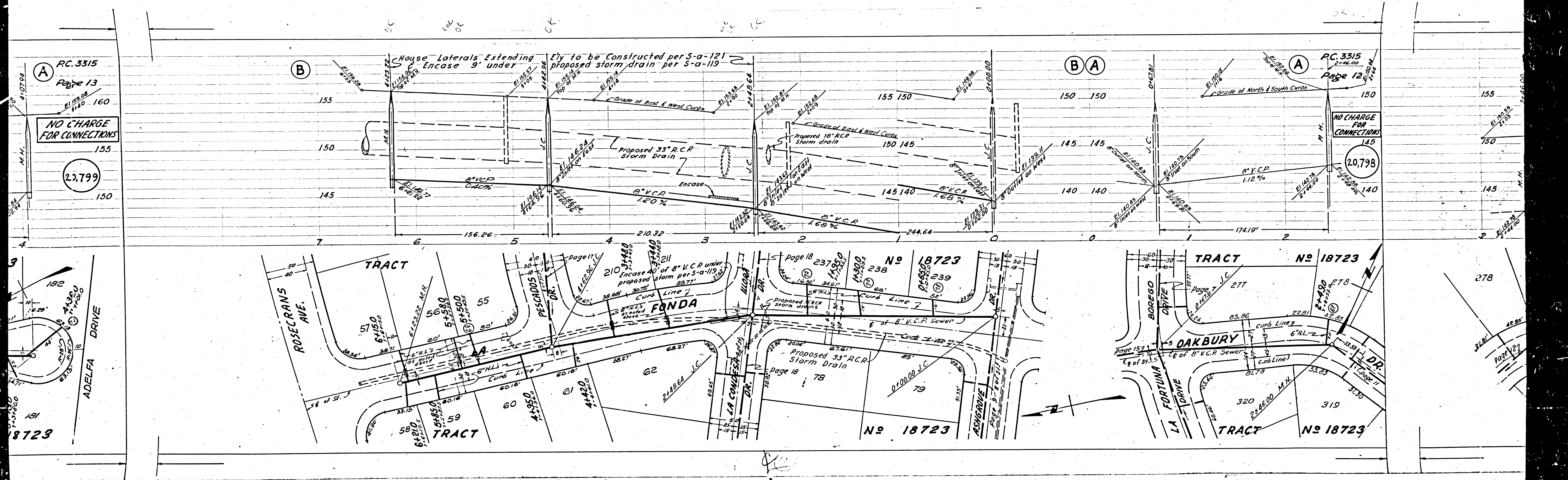
NO CHARGE FOR CONNECTIONS
20,797

TRACT No 18723

PC 3315

3





RC. 3315
Page 13

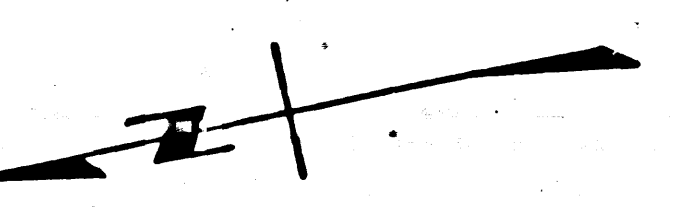
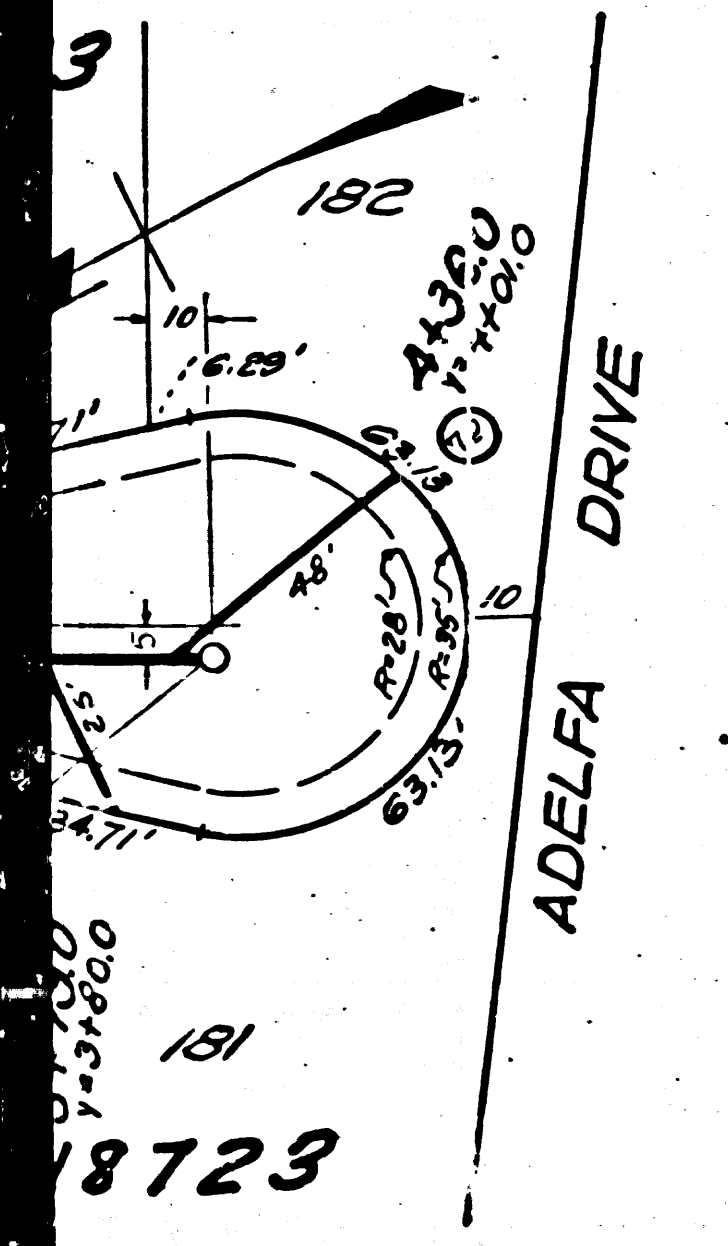
NO CHARGE FOR CONNECTIONS

2,799

RC. 3315
Page 12

NO CHARGE FOR CONNECTIONS

2,798



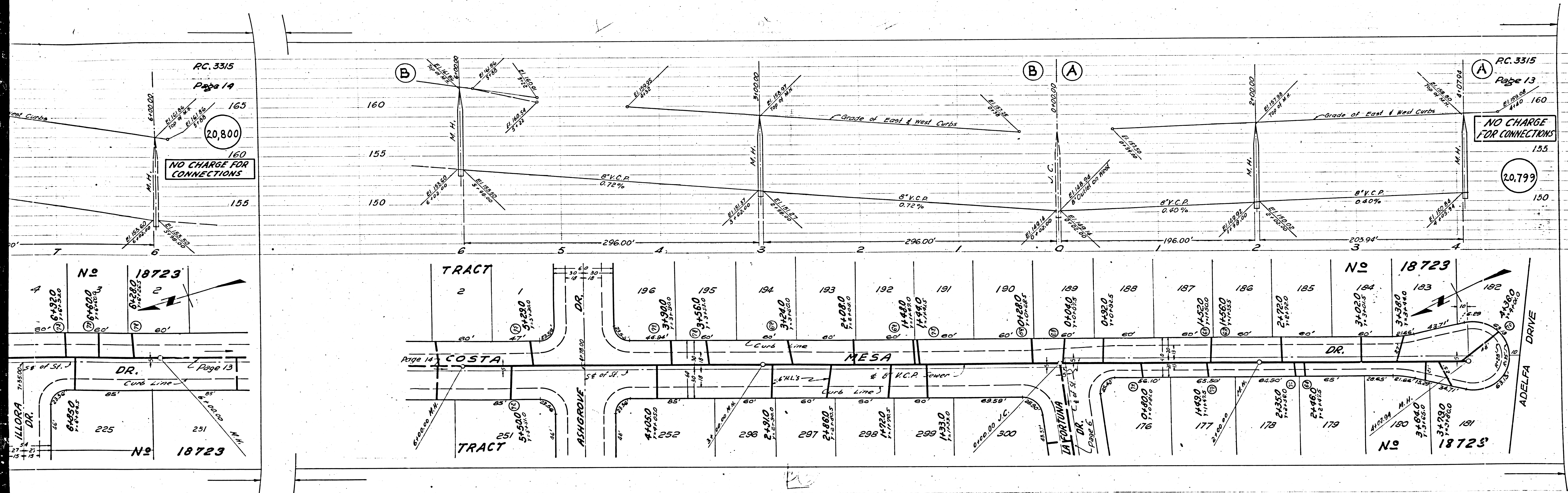
18723

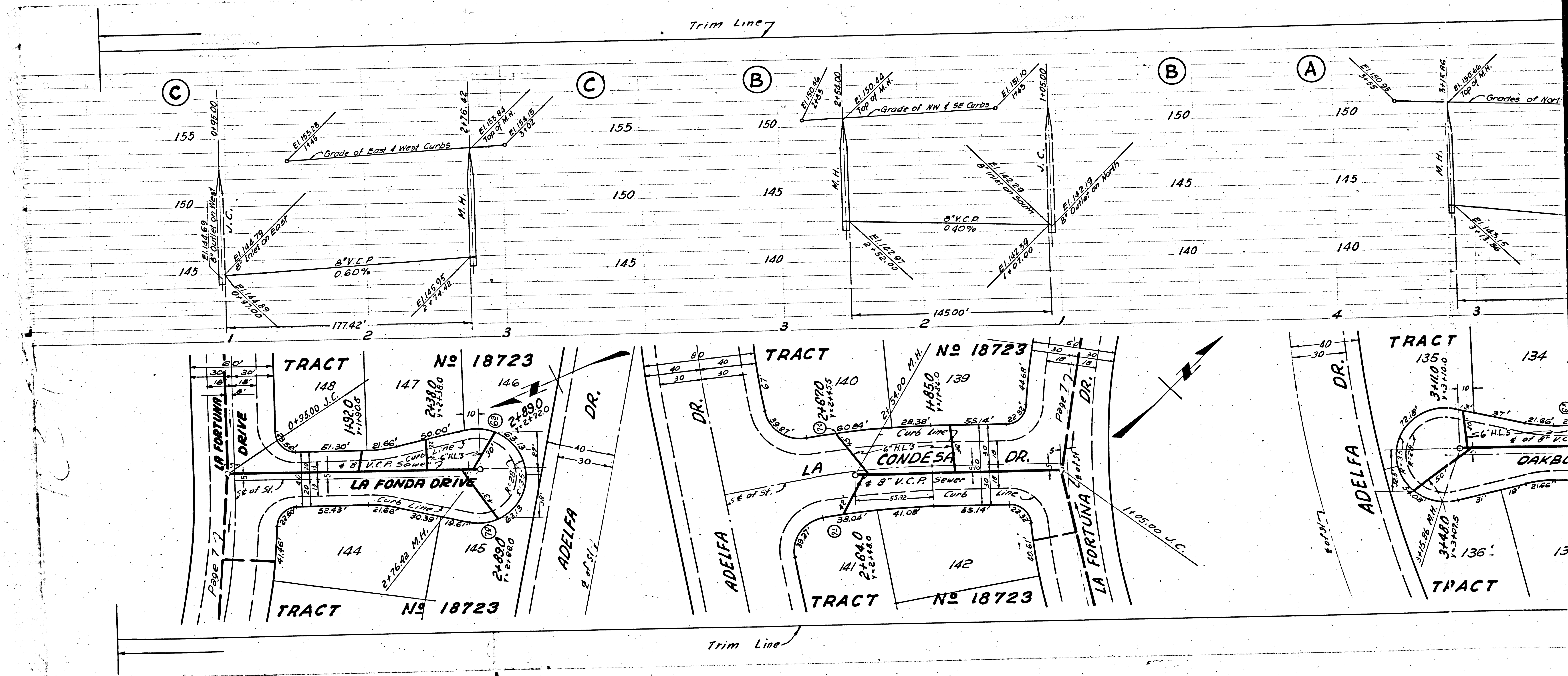
18723

18723

278

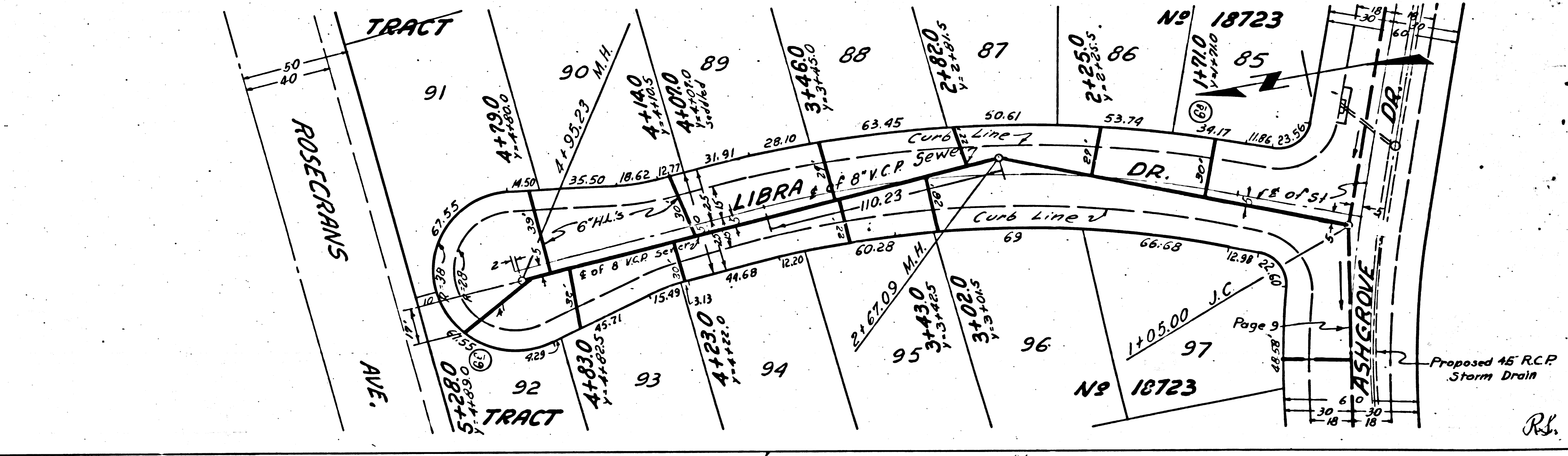
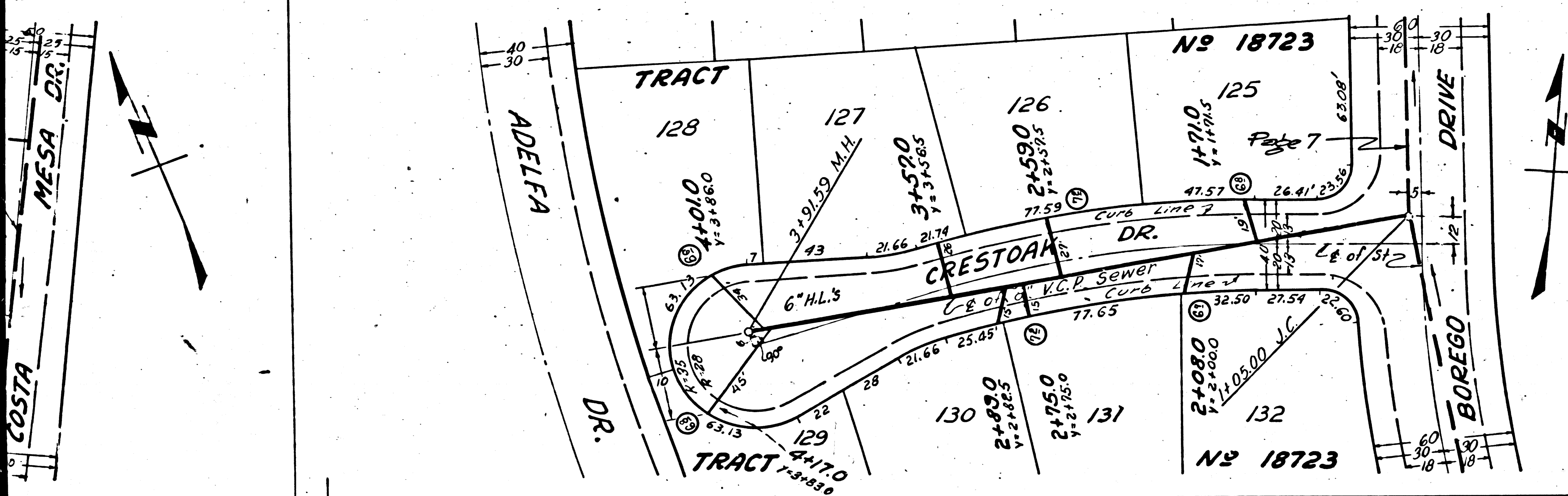
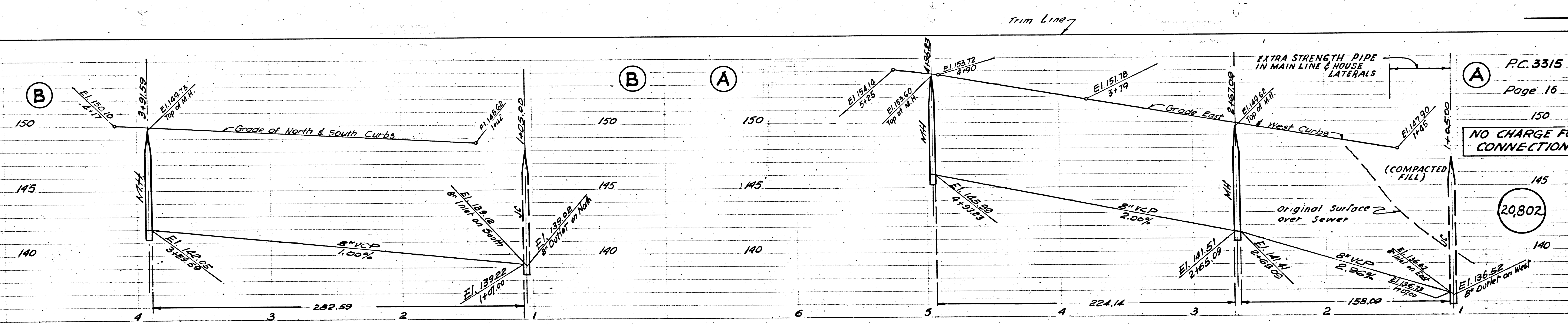
Page 127



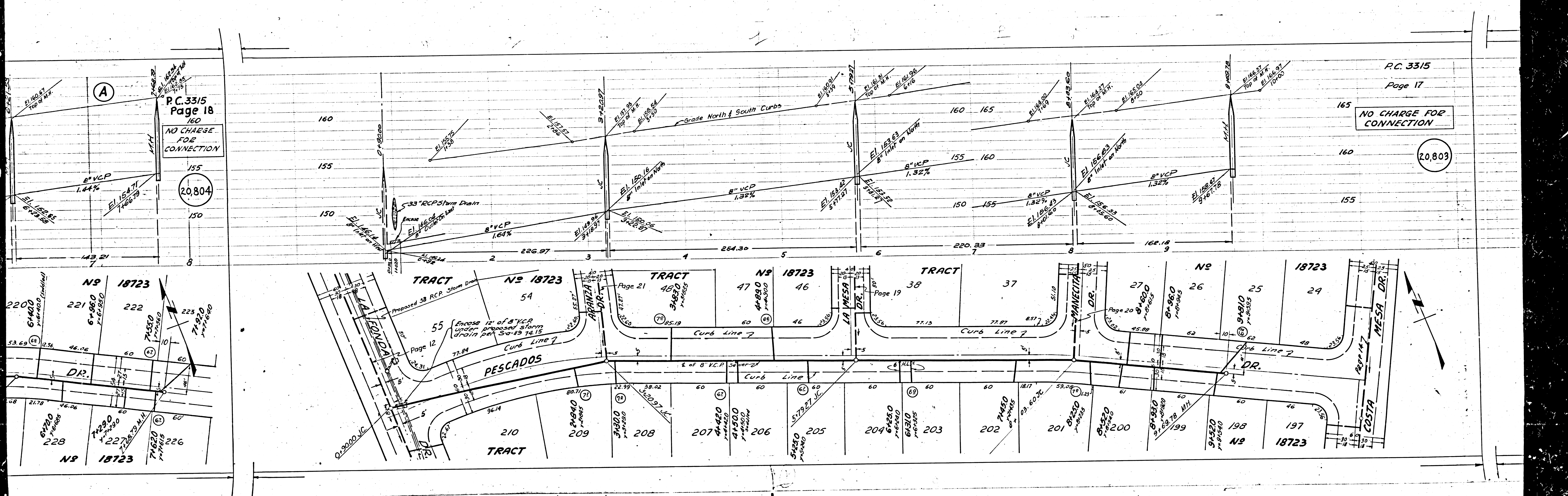


P.C. 3315
Page 17
NO CHARGE FOR CONNECTION
20,803

P.C. 3315
Page 16
NO CHARGE FOR CONNECTIONS
20,802



TRACT No 18723
P.C. 3315
Page 17



P.C. 3315
 Page 18
 160
 NO CHARGE FOR CONNECTION
 155
 20,804
 150

P.C. 3315
 Page 17
 165
 NO CHARGE FOR CONNECTION
 160
 20,803
 155

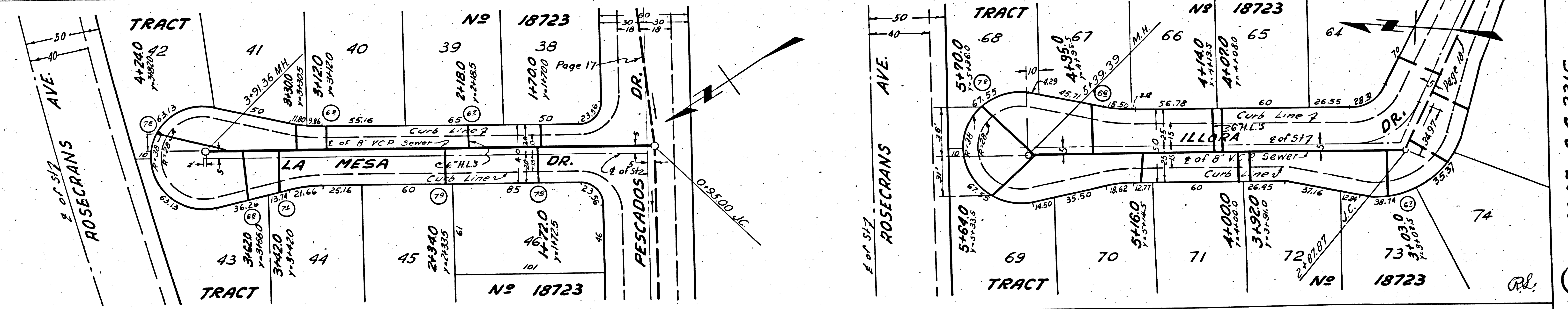
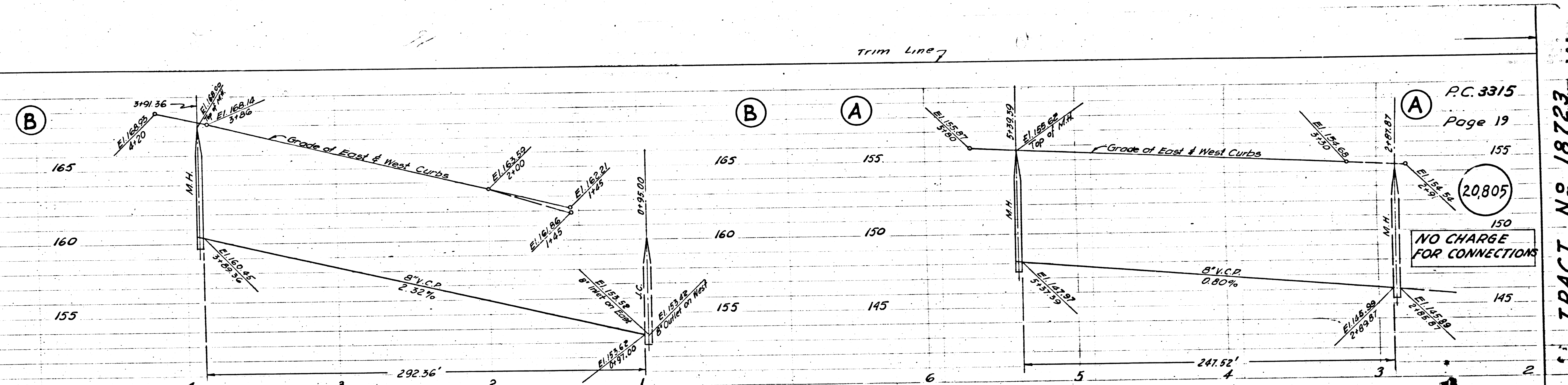
TRACT NO 18723
 2200
 221
 222
 223
 226
 228
 226

TRACT NO 18723
 54
 TRACT NO 18723
 47
 46
 38
 37
 27
 26
 25
 24
 TRACT NO 18723
 210
 209
 208
 207
 206
 205
 204
 203
 202
 201
 199
 198
 197

(A) P.C. 3315
Page 20

NO CHARGE FOR CONNECTIONS

20,806



P.C. 3315
Page 19

NO CHARGE FOR CONNECTIONS

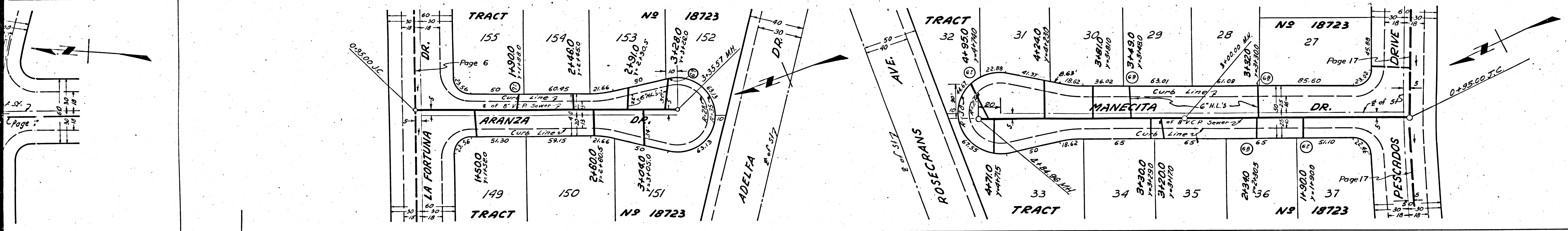
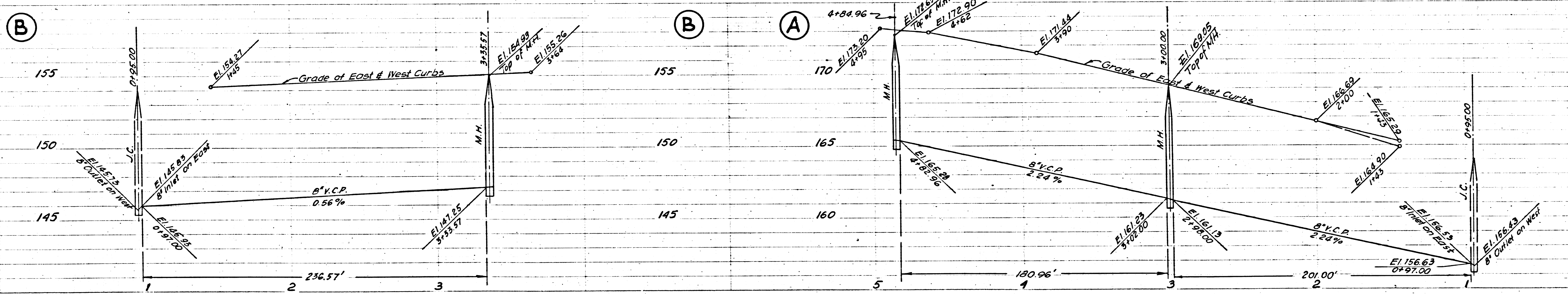
20,805

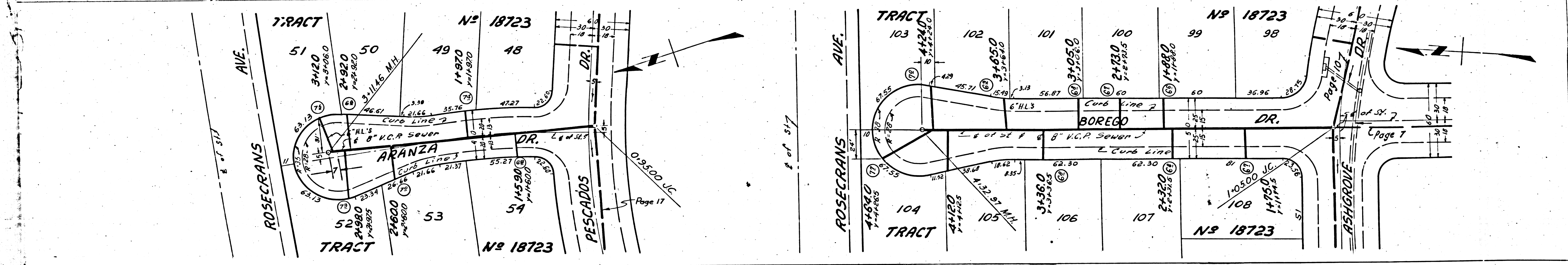
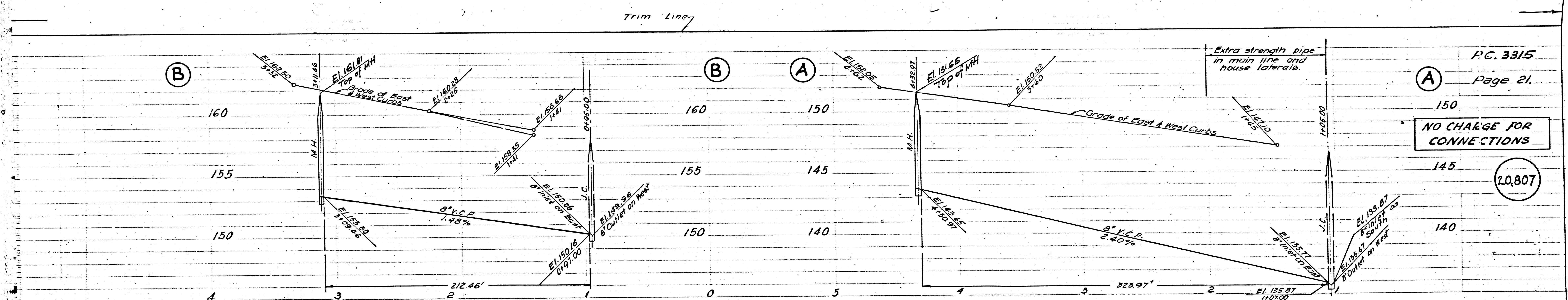
TRACT N^o 18723

P.C. 3315

P.C. 3315
Page 21
NO CHARGE FOR CONNECTIONS
20,807

P.C. 3315
Page 20
NO CHARGE FOR CONNECTIONS
20,806





Trim Line