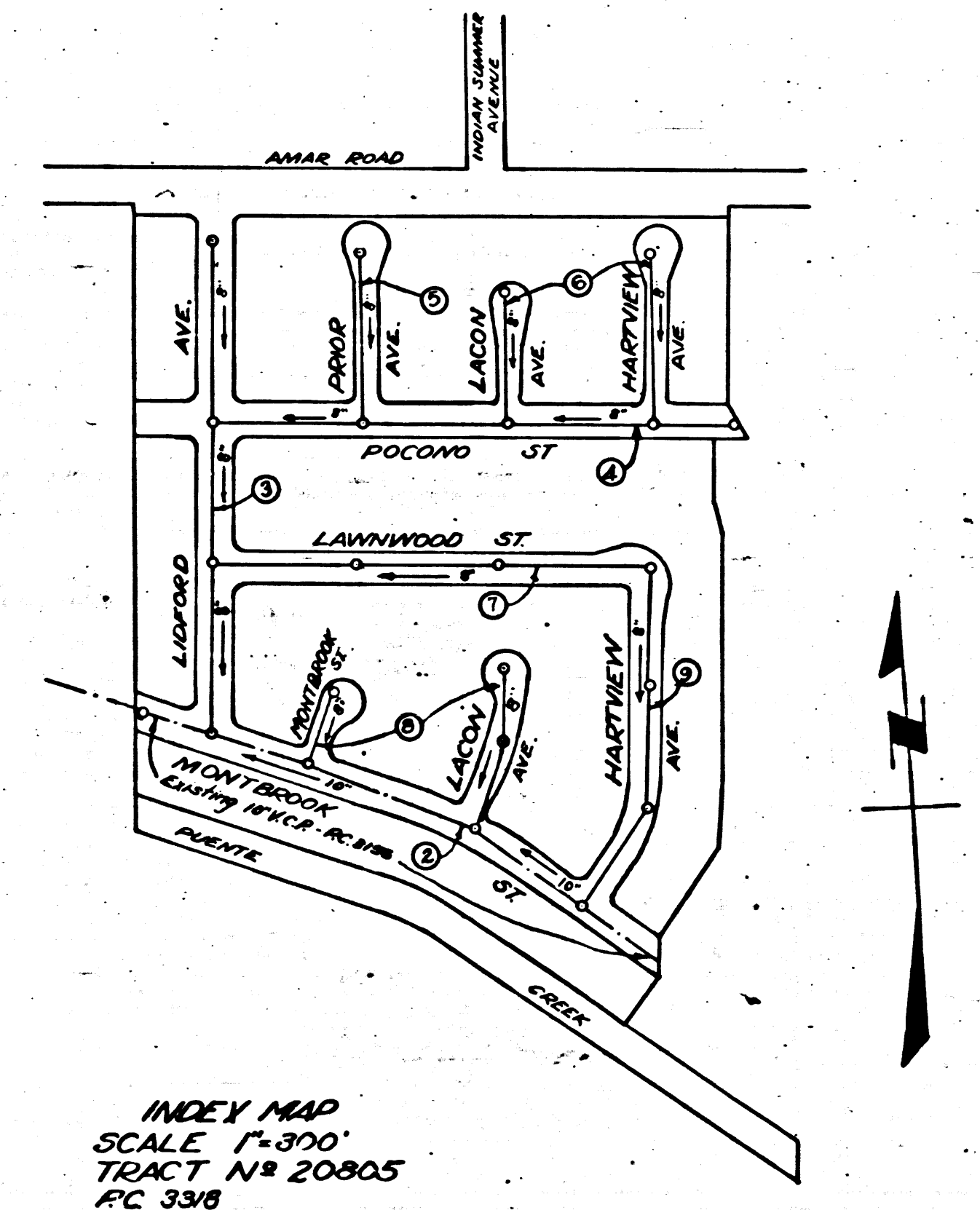


BM  
 SC 10M Elev 3270.27  
 Set L.A. rd. south curb of  
 driveway to house 475  
 elevation above 275' south a  
 250' east of E. intersection  
 Elliot Ave. & Glendora Ave. 2.30'  
 east of beginning of curb.



INDEX MAP  
 SCALE 1"=370'  
 TRACT N° 20805  
 PC 338

SHEET	PAGE
1	1-4
2	4-3

NO CHARGE FOR CONNECTION  
 L. Carter 1-31-55

*from line 7*

**NOTE: PUENTE BLDG. DIST. No. 2**  
 Provide stakes on the property lines or property lines produced at right angles to the sewer line at the center line of each manhole.  
 No representative of the County Engineer will survey or layout any portion of the work.  
 The owner or his authorized representative shall furnish the County Engineer with grade sheets and stations for all house laterals and Y branches and shall provide stakes for them at their proper locations with stationing plainly marked. Any change in location shall be requested in writing by the owner or his representative.  
 No revisions shall be made in these plans without the approval of the County Engineer.

1. Use standard manhole frames and covers, S-a-117.
2. Use standard strength pipe except as noted.
3. Use cement mortar for all vitrified clay pipe joints.
4. Resurface all trench within paved area to meet L.A. County Road Dept. or California State Highway Dept. requirements in accordance with permit.
5. Encase four feet of sewer at points of interference with poles, S-a-119.
6. House laterals to be constructed with inverts at property line \_\_\_\_\_ feet below curb grade except as noted.
7. All structures shall be brick sewer structures, S-a-104.
8. For allowable leakage test, use Formula No. 1, Spec's., Sec. 51.
9. Manhole tops in unimproved Rights-Of-Way to be 6" above finish grade.

*Checked 4-14-55 W. H. ...*

PROFILE, ALIGNMENT AND GRADE OF  
**SANITARY SEWERS**  
 TO BE CONSTRUCTED IN  
**TRACT N° 20805**  
 PRIVATE CONTRACT NO. 3318  
 W. S. 38  
 2 SHEETS  
 Scale: VERT. 1"=4'  
 HORIZ. 1"=40' DEC. 1954  
 PREPARED IN THE OFFICES OF  
 NATIONAL ENGINEERING &  
 SURVEYING SERVICE, CO.  
*Edmund J. Epperson*  
 Reg. C. E. No. 5828  
 FOR LEGEND SEE PLAN NO. S-a-64

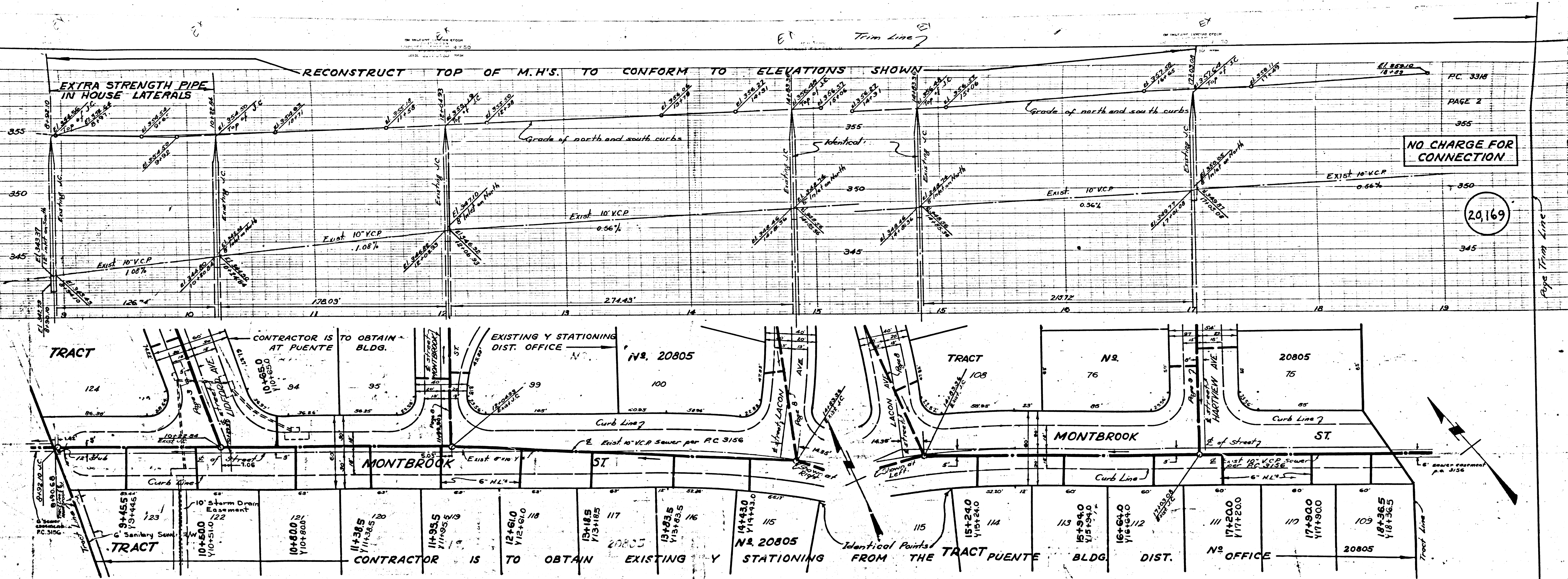
**NOTE:**  
 Grades to which this improvement is to be constructed are shown on plans and profiles. Grade points for top of curbs, center line of streets, or center line of alleys are shown by circles on profiles. At all points between designated points the grade shall be established so as to conform to a straight line drawn between said designated points.  
 Elevations are in feet above U.S.G.S. datum or mean sea level.  
 This drawing and the data hereon are hereby made a part of the specifications.  
 Work shall be constructed according to specifications on file in the office of the County Engineer and shall be prosecuted only in the presence of the County Engineer.  
 Before work can be started, the contractor must obtain a permit to excavate in County streets from the L.A. County Road Dept., 108 W. 2nd St. and make a deposit with the County Engineer, 733 L.A. County Engineering Building, sufficient to cover the cost of construction inspection and record plans.  
 Approval of this plan by the County of Los Angeles does not constitute a representation as to the accuracy of the location of or the existence or non-existence of any underground utility, pipe, or structure within the limits of this project. This note applies to all sheets.  
 If work is to be done in a State Highway, a permit must be obtained from the State of California, Division of Highways, 120 South Spring Street.

**COUNTY OF LOS ANGELES, CALIFORNIA**  
 Approved, William J. Fox, County Engineer  
*A. P. ...*  
 Sanitation Engineer  
 Approved, A. M. Rawlin  
 CHIEF ENGR. CO. SAN. DIST. NO. 15  
*A. M. Rawlin*  
 Office Engineer  
 Checked by *Re. ...*  
 Office of County Engineer, Reg. C. E. No. 7860

PC 338  
 PAGE 1

20,168

TRACT N° 20805  
 PC 338



NO CHARGE FOR CONNECTION

20169

TRACT

TRACT

TRACT

CONTRACTOR IS TO OBTAIN EXISTING STATIONING FROM THE TRACT PUENTE BLDG. DIST. NO. OFFICE

CONTRACTOR IS TO OBTAIN EXISTING STATIONING AT PUENTE BLDG.

(13)



ST.

MONTBROOK

MONTBROOK

N. 20805

N. 20805

N. 20805

N. 20805

N. 20805

N. 20805

N. 20805

N. 20805

N. 20805

N. 20805

N. 20805

N. 20805

N. 20805

N. 20805

N. 20805

N. 20805

N. 20805

N. 20805

N. 20805

N. 20805

N. 20805

N. 20805

N. 20805

ST.

ST.

ST.

ST.

ST.

ST.

ST.

ST.

ST.

ST.

ST.

ST.

ST.

ST.

ST.

ST.

ST.

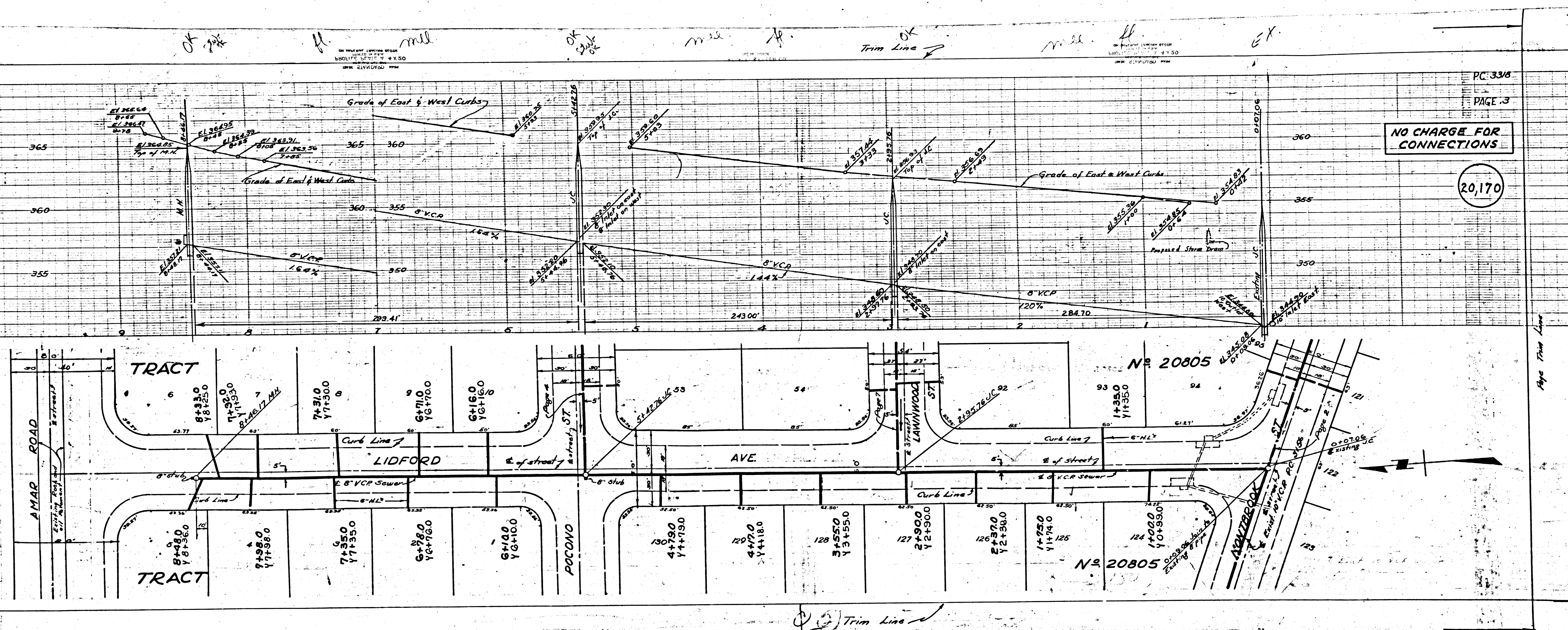
ST.

ST.

ST.

ST.

ST.

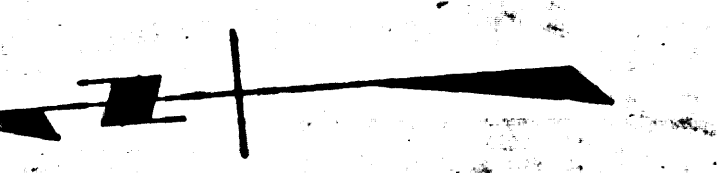


OK mill Trim Line OK mill EX

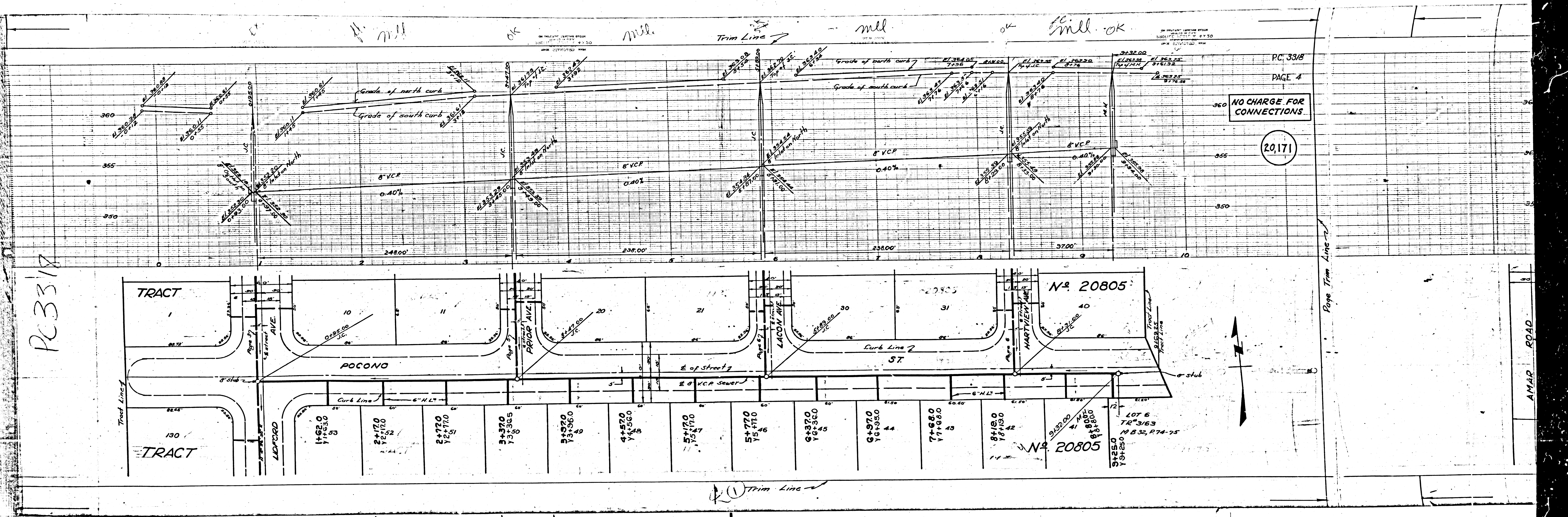
PC 330  
PAGE 3

NO CHARGE FOR CONNECTIONS  
20,170

Trim Line



PC 3317



PC 3318  
PAGE 4

NO CHARGE FOR CONNECTIONS

20,171

Pope Trim Line

AMAR ROAD

PC 3318  
PAGE 6

SEE FOR  
CONDITIONS

20,173

Trim Line 7

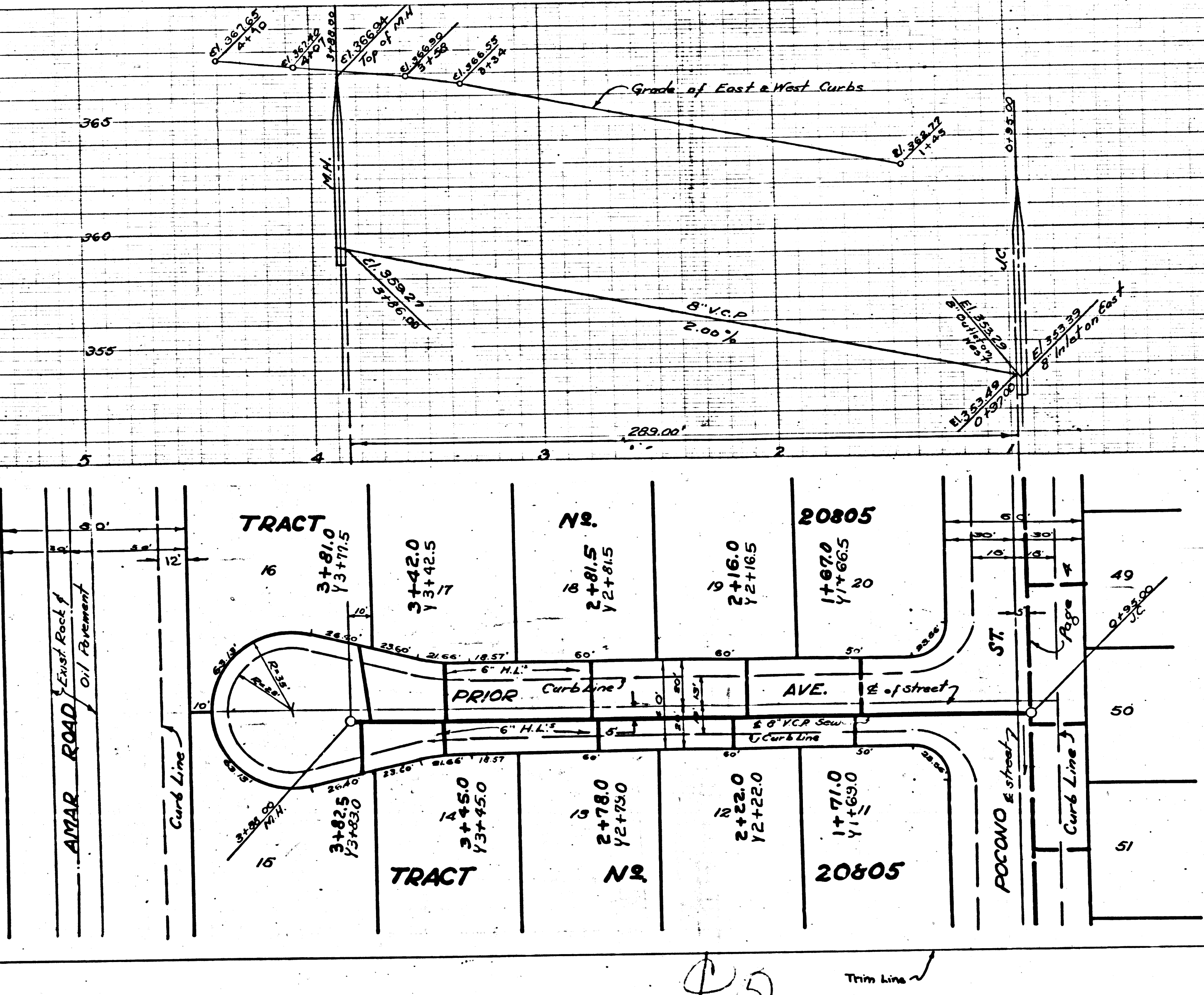
PC 3318  
PAGE 5

NO CHARGE FOR  
CONNECTIONS

20,172

TRACT No 20805

PC 3318  
81E 5A



45

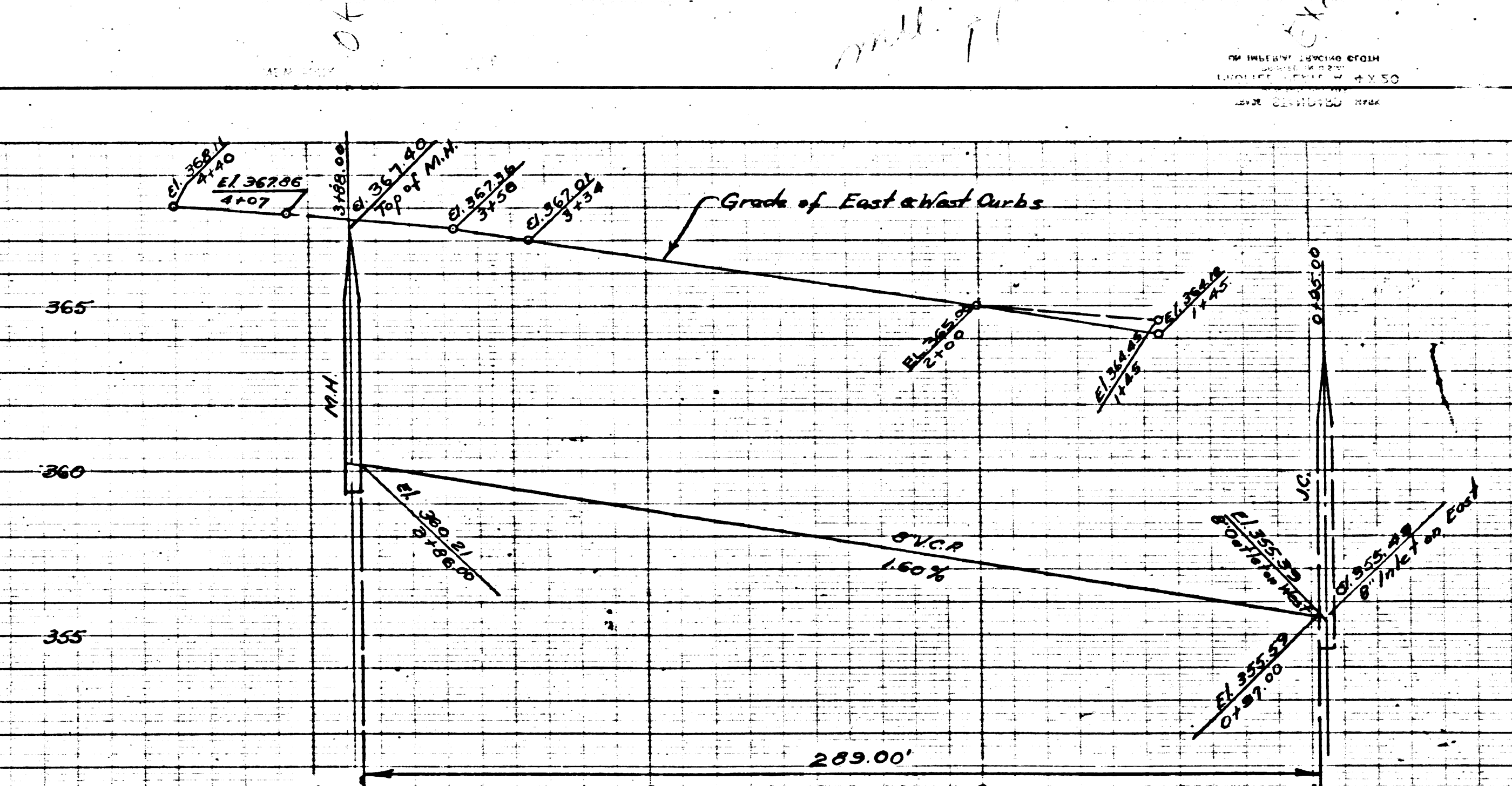
Trim Line

2/11

ARG. FOR  
ECTIONS

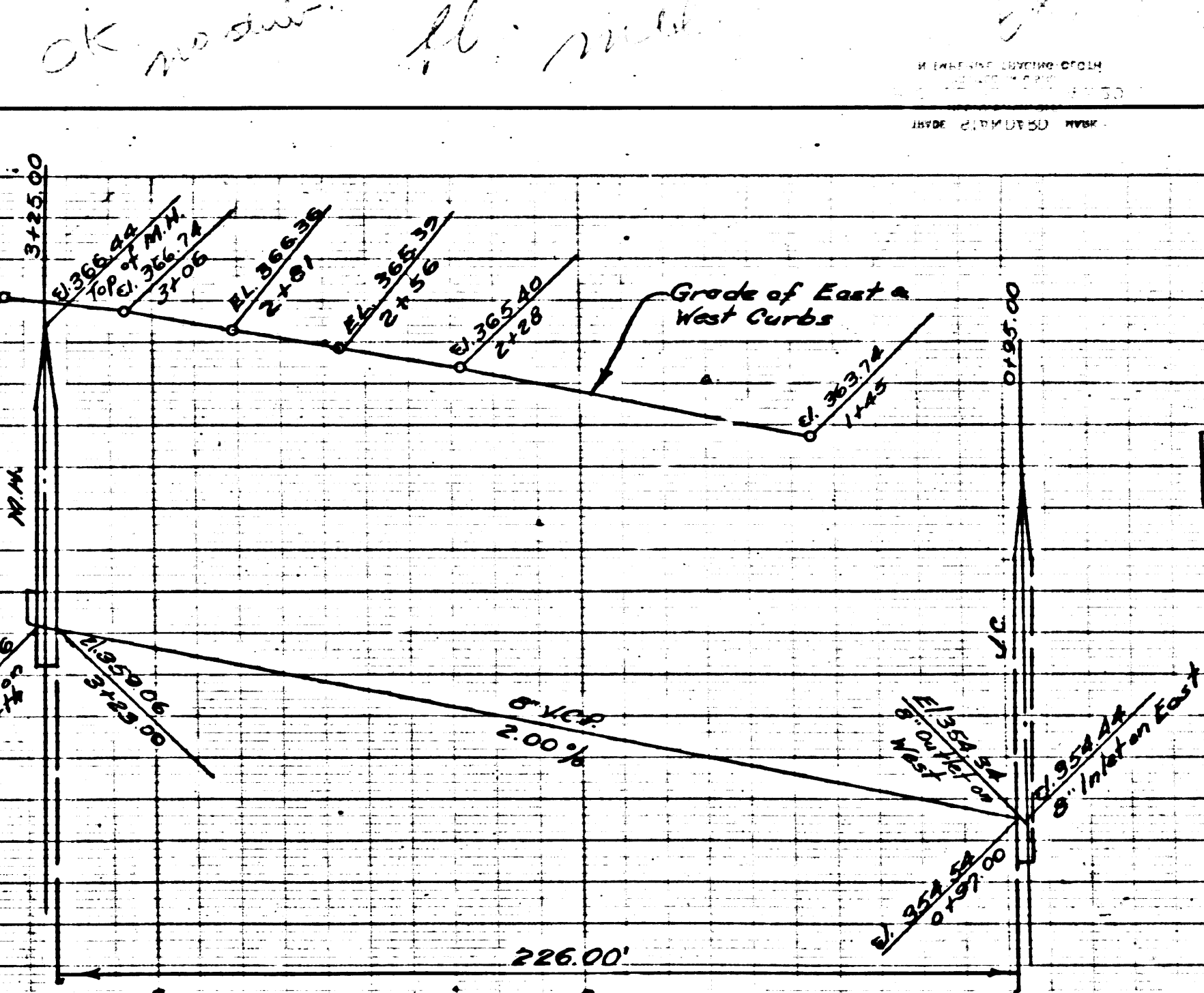
20,174

(B)



(B)

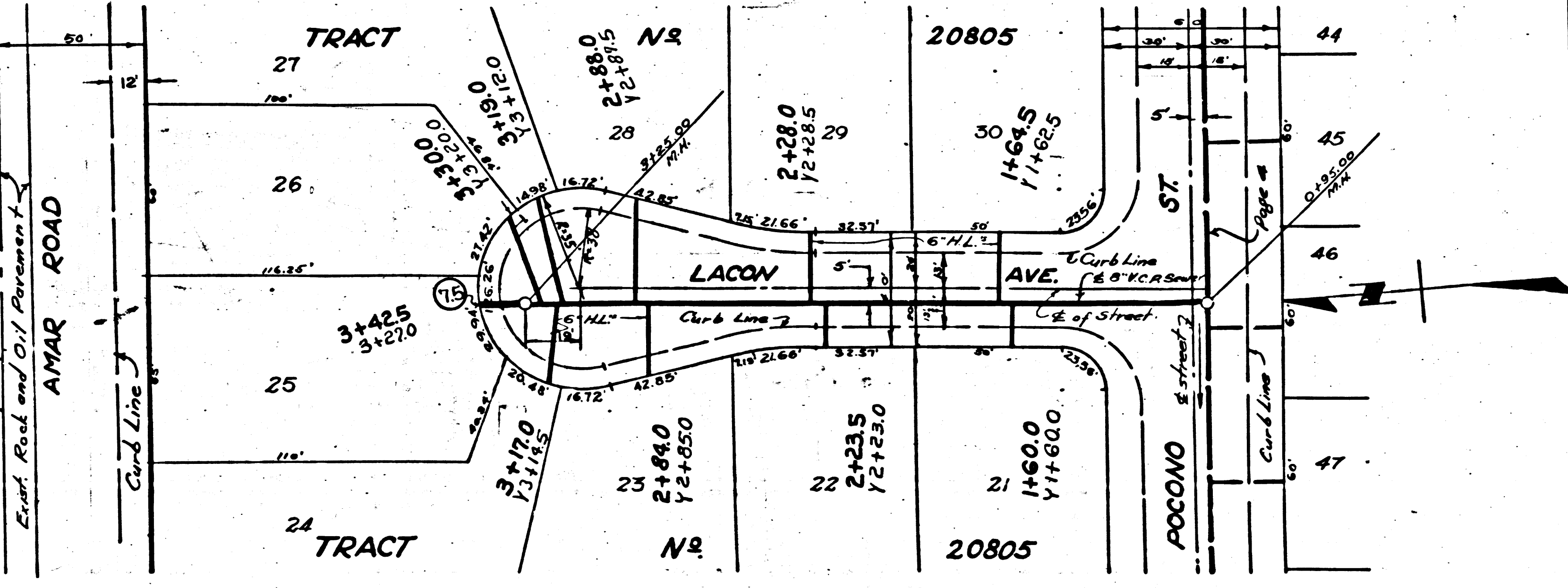
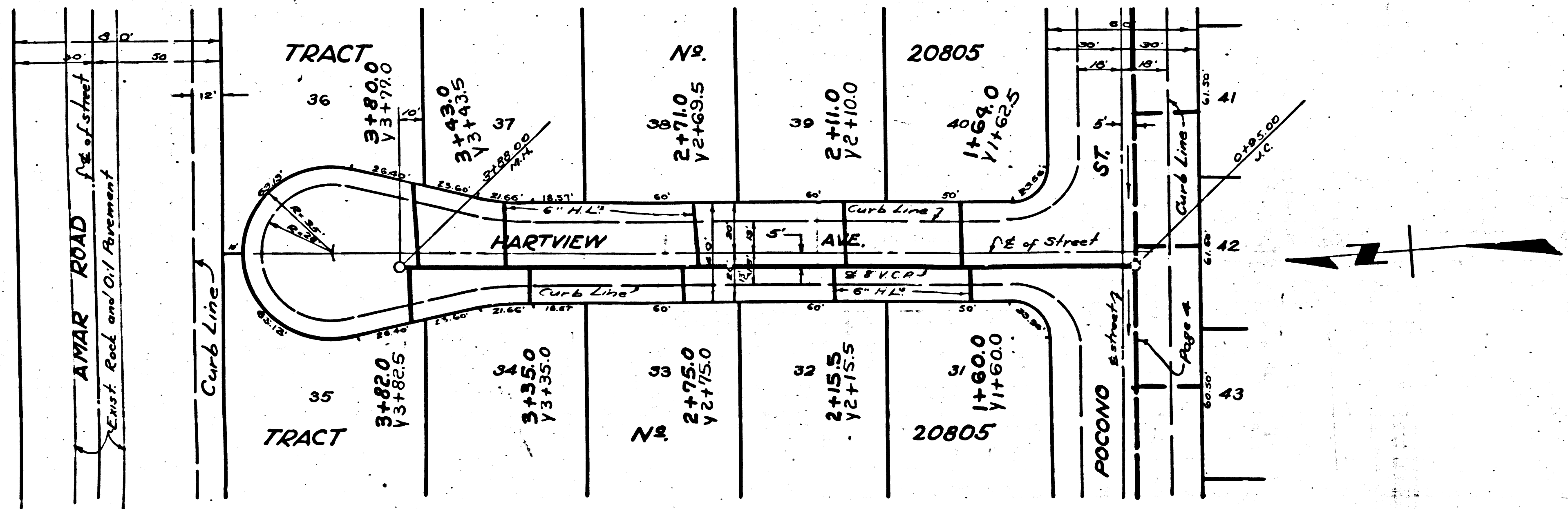
(A)



(A)

NO CHARGE FOR  
CONNECTIONS

20,173



PC 33/8  
PAGE 8

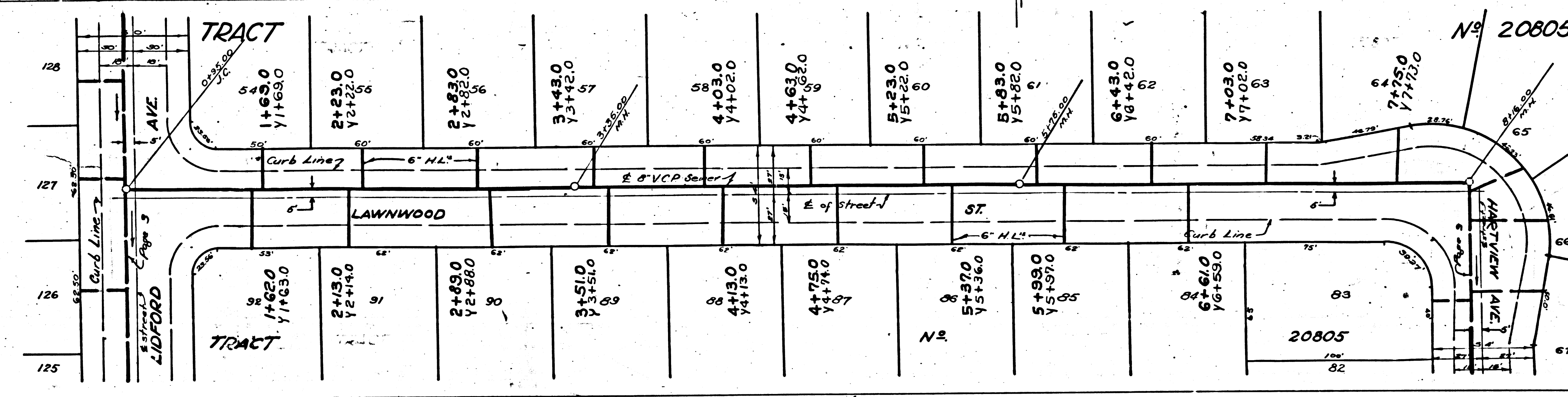
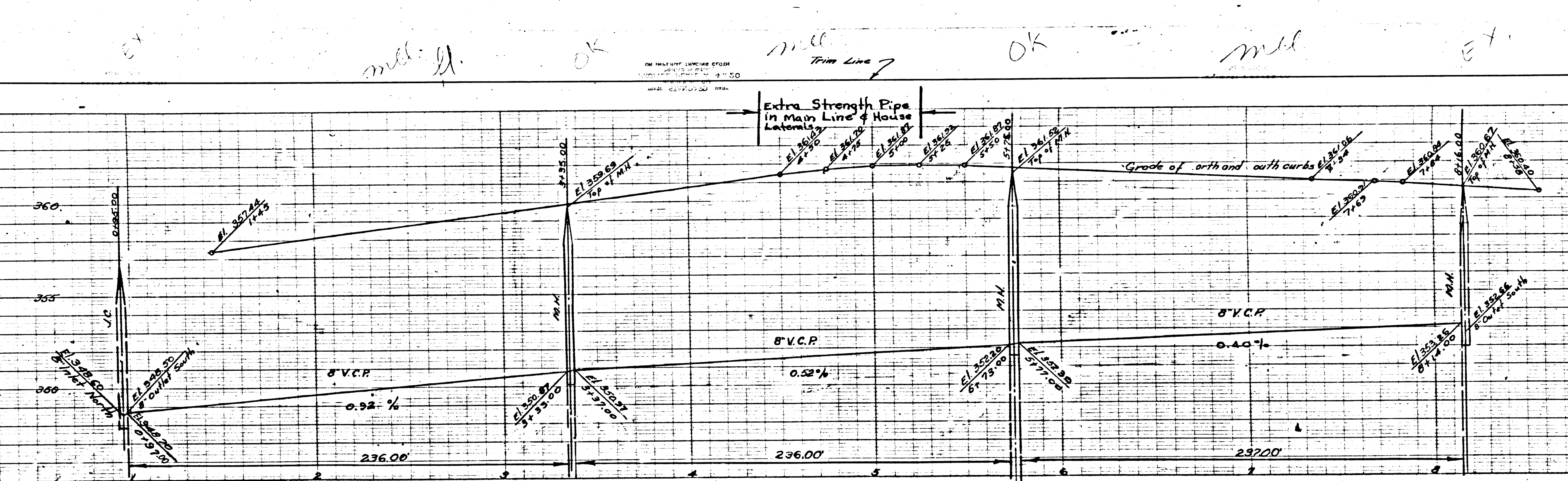
NO CHARGE FOR CONNECTIONS

20,175

PC 33/8  
PAGE 7

NO CHARGE FOR CONNECTIONS

20,174

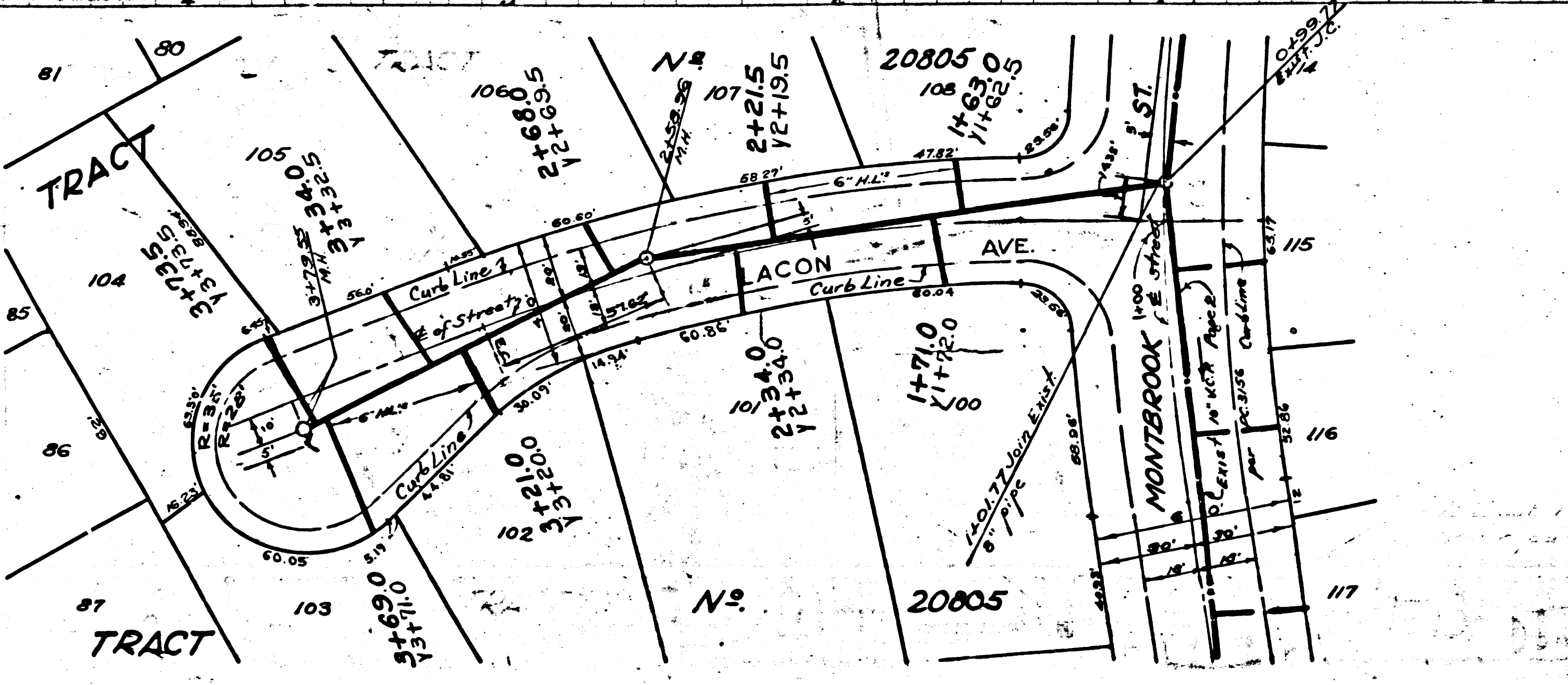
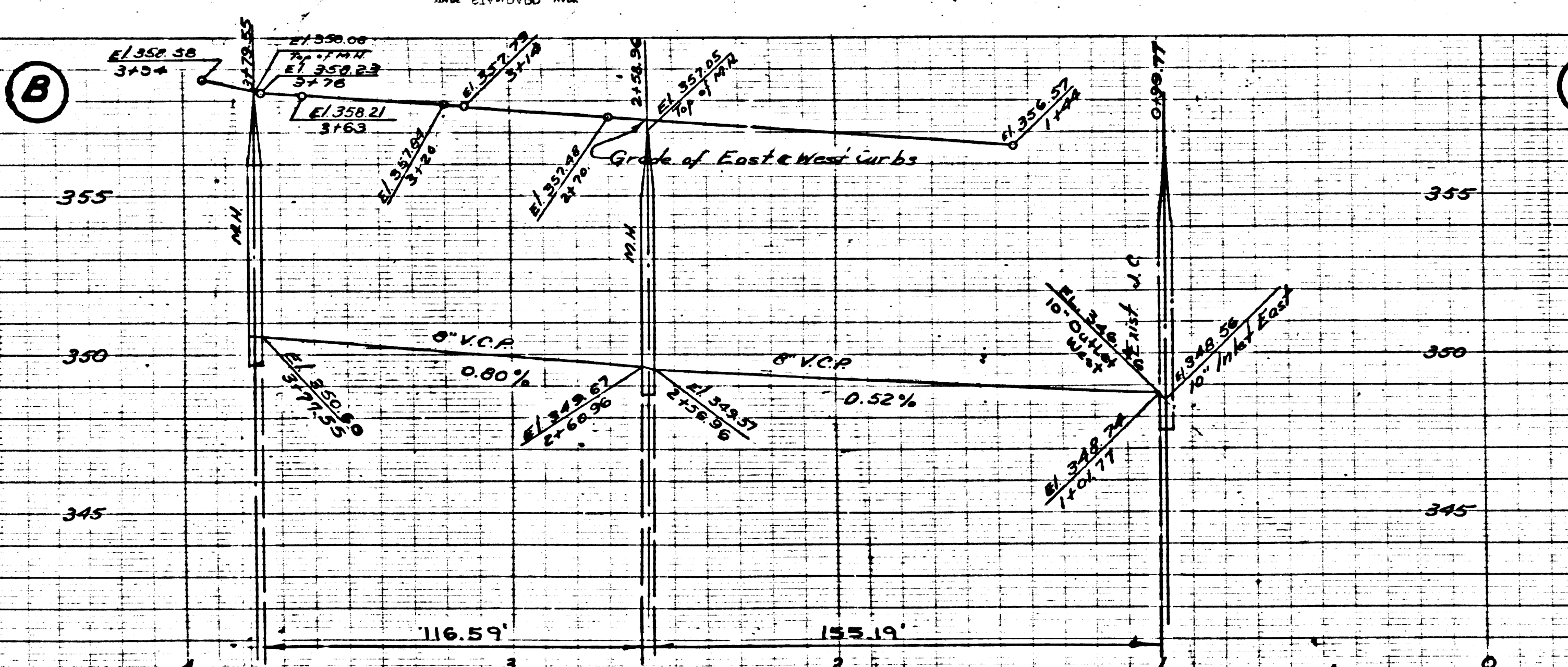


20

Trim Line

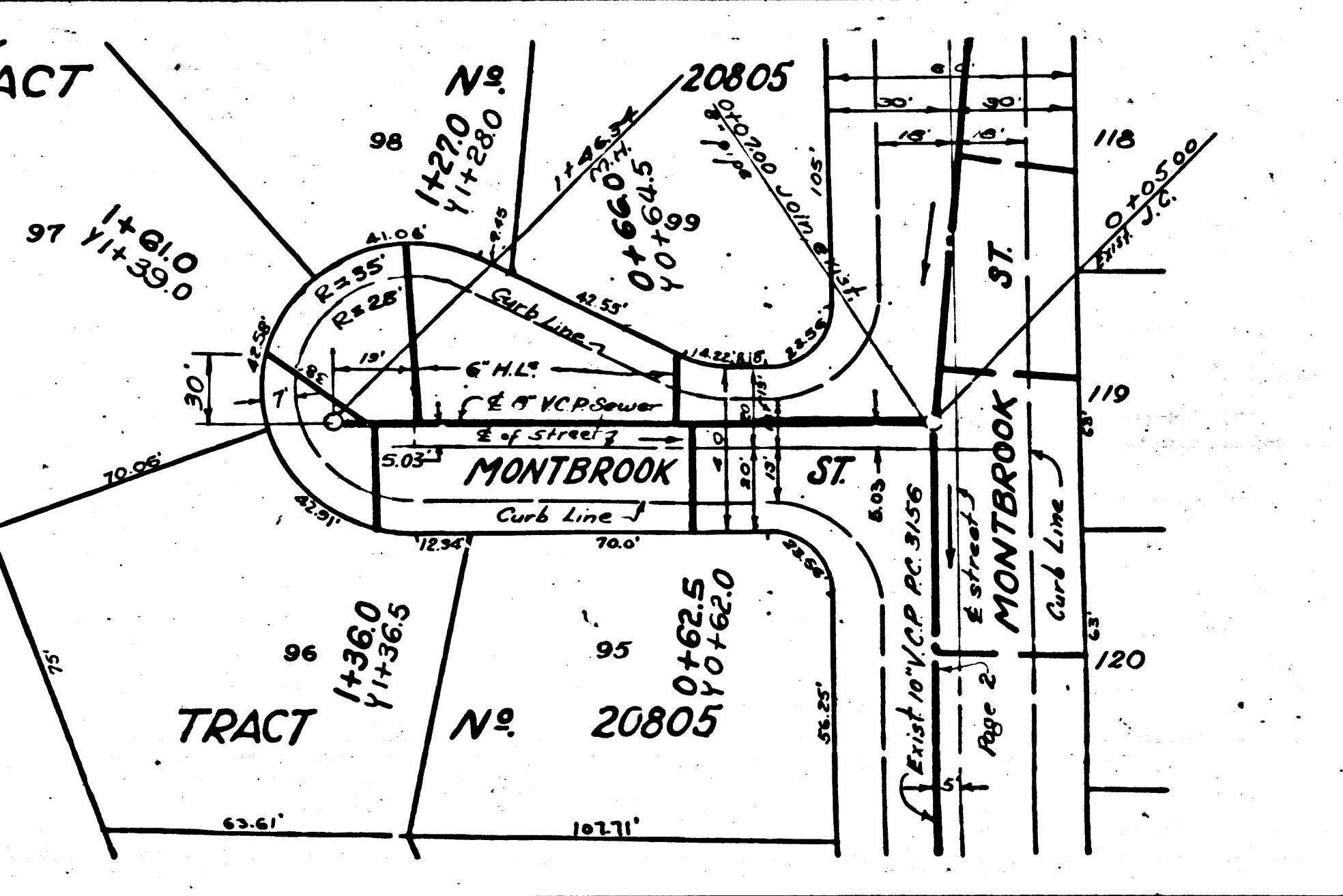
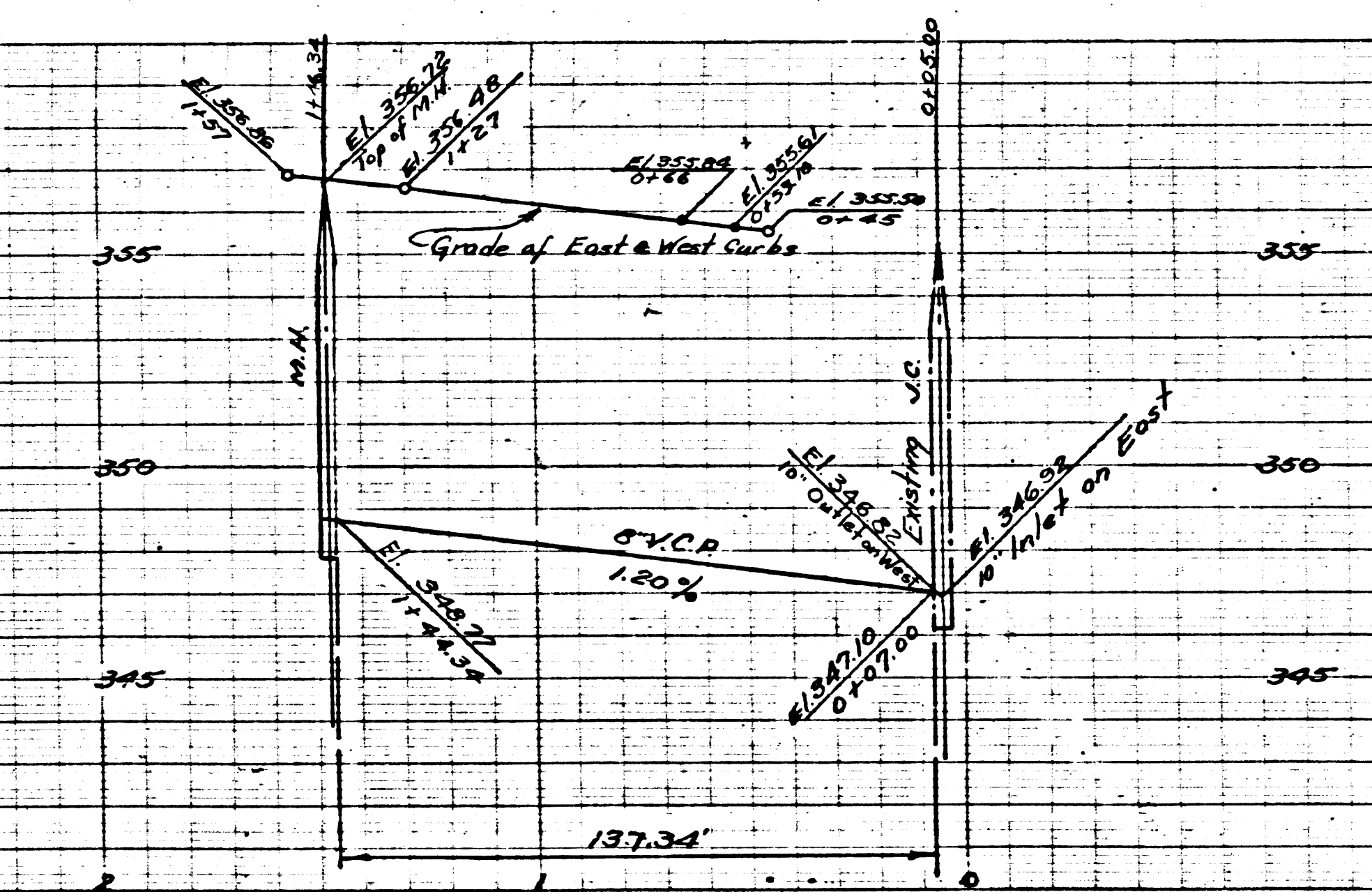
PC 3318  
PAGE 9

NO CHARGE FOR CONNECTIONS  
20,176



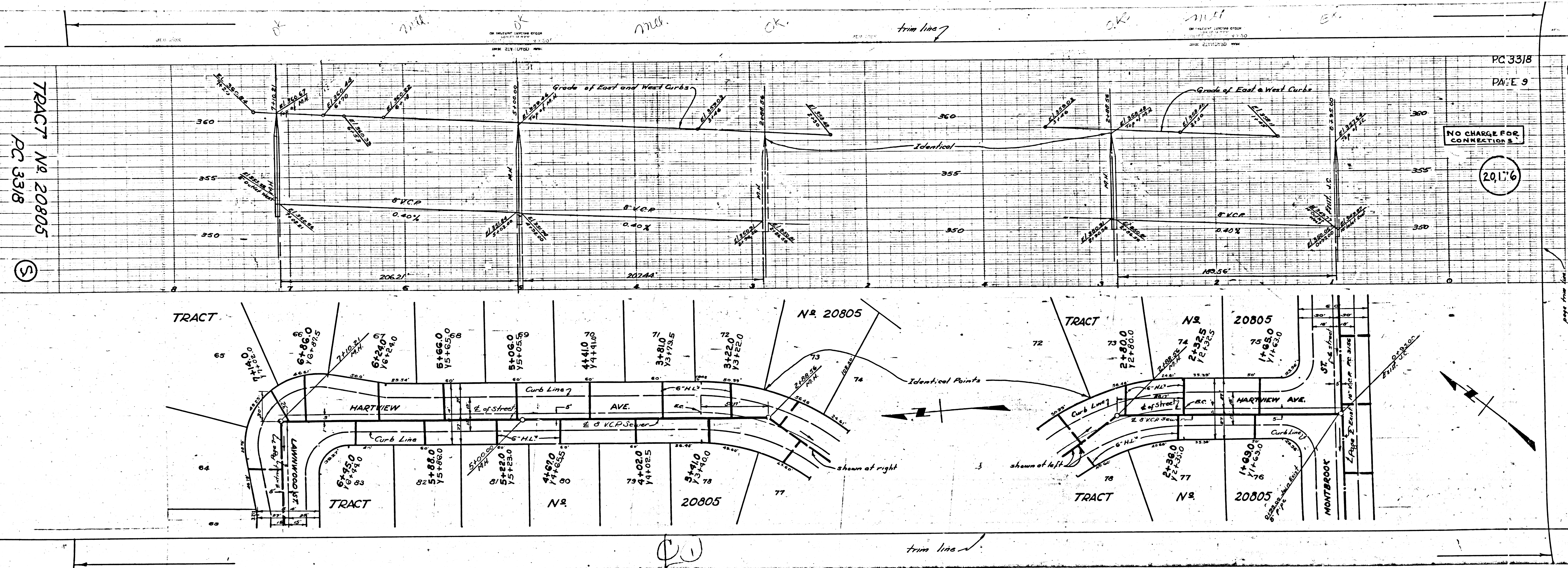
PC 3318  
PAGE 8

NO CHARGE FOR CONNECTIONS  
20,175



20





TRACT N<sup>o</sup> 20805  
P.C. 3318

P.C. 3318  
PAGE 9

NO CHARGE FOR CONNECTIONS  
20176

PC 3318

CO

trim line